



MIDWEST SURVEYS

LOGGING - PERFORATING - CONSULTING SERVICES

P.O. Box 68, Osawatomie, KS 66064

913 / 755 - 2128

GAMMA RAY / NEUTRON / CCL

AP# 15-207-29,033

File No.

Company Haas Petroleum, LLC.

Well Old Rhea No. 17-HP

Field Winterscheid

County Woodson State Kansas

Location

2310' FSL & 250' FWL

W/2-NW-NW-SW

Other Services

Perforate

Sec. 24

Twp. 24s

Rge. 13e

Elevation

Permanent Datum

GL

Elevation

1088'

K.B. 1094'

Log Measured From

GL

Elevation

1088'

D.F. NA

Drilling Measured From

KB 6' from GL

Elevation

1088'

Date 09-26-2014

Run Number

One

Depth Driller

1690.0

Depth Logger

1674.5

Bottom Logged Interval

1673.5

Top Log Interval

200.0

Fluid Level

Full

Type Fluid

Water

Density / Viscosity

NA

Salinity - PPM Cl

NA

Max Recorded Temp

NA

Estimated Cement Top

0.0

Equipment No.

102

Location

Osawatomie

Recorded By

Gary Windisch

Witnessed By

Mark Haas

RUN

BORE-HOLE RECORD

CASING RECORD

No.

BIT

FROM

TO

SIZE

WGT.

FROM

TO

One

12.25"

0.0

40.0

8.625"

22.0 #

0.0

40.0

Two

6.75"

40.0

1690.0

4.50"

10.5 #

0.0

1690.0

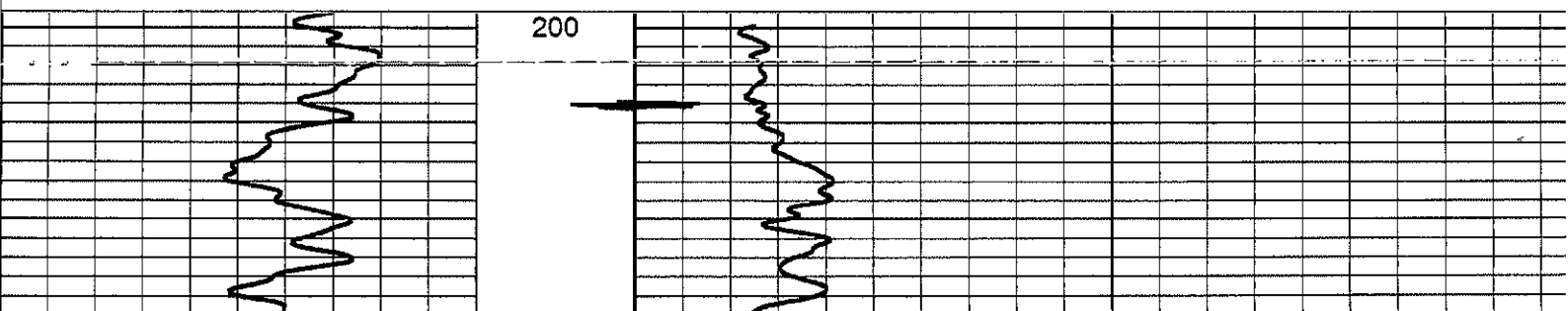
All interpretations are opinions based on inferences from electrical or other measurements and we cannot and do not guarantee the accuracy or correctness of any interpretation, and we shall not, except in the case of gross or willful negligence on our part, be liable or responsible for any loss, costs, damages, or expenses incurred or sustained by anyone resulting from any interpretation made by any of our officers, agents or employees. These interpretations are also subject to our general terms and conditions set out in our current Price Schedule.

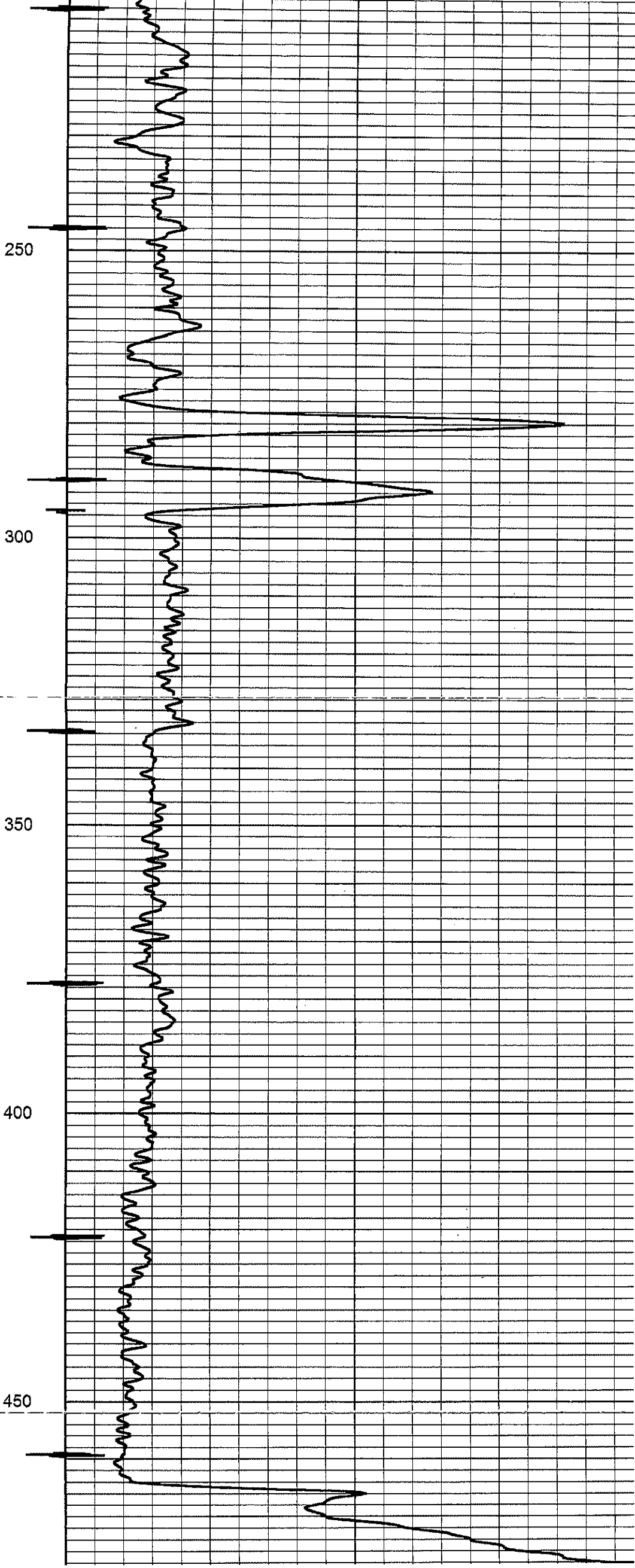
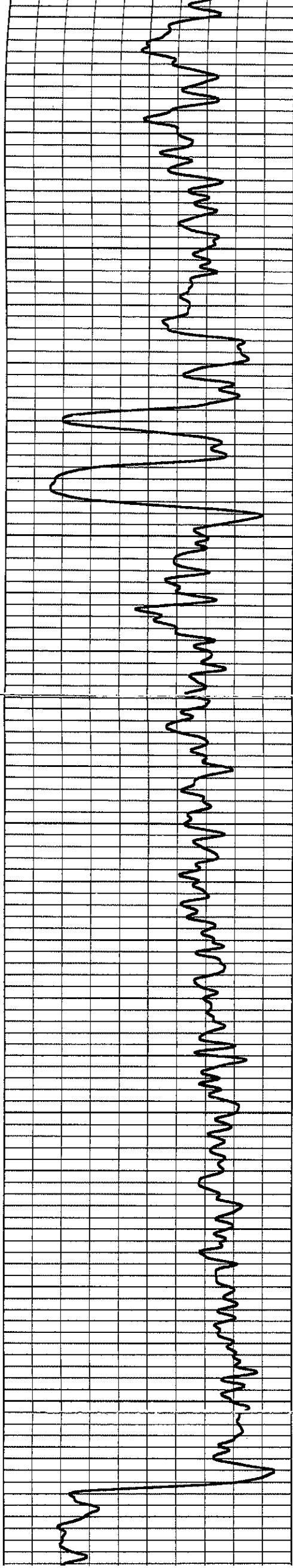
Comments

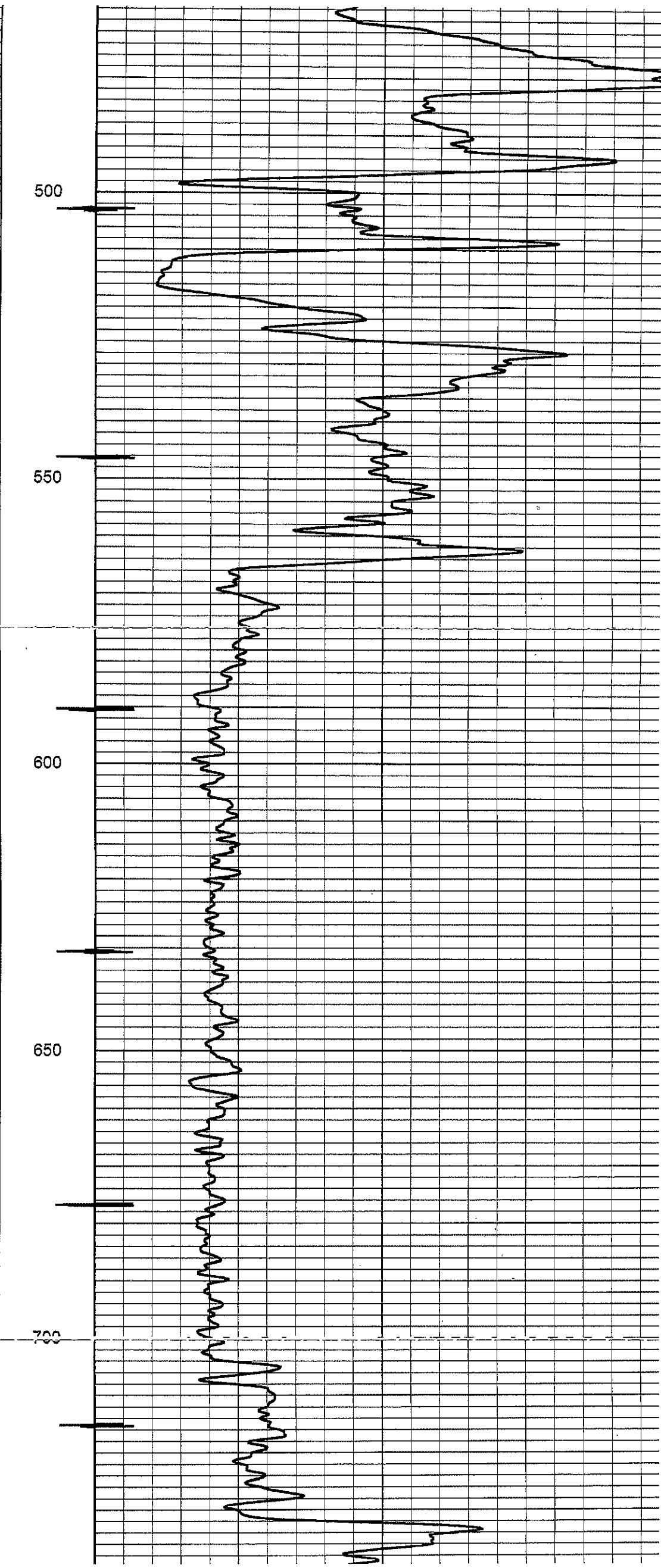
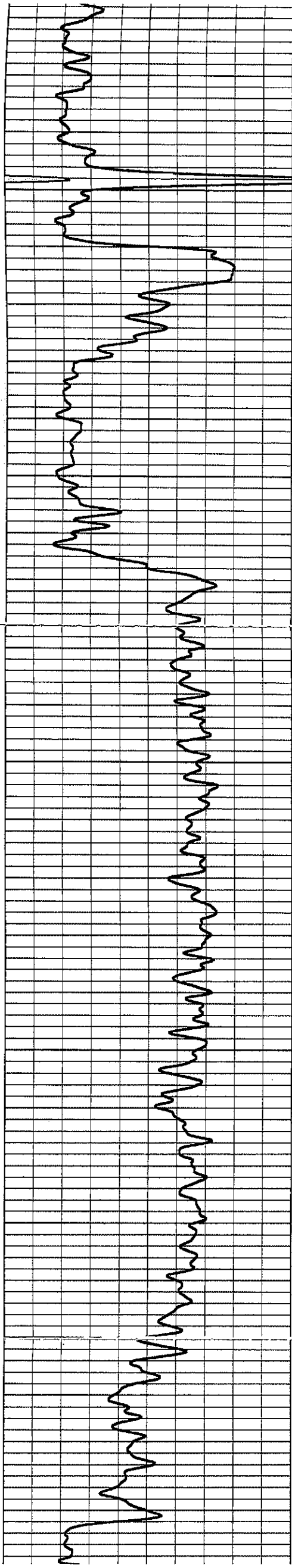
Drilling Contractor :
Skyy Drilling, LLC.
Rig #1

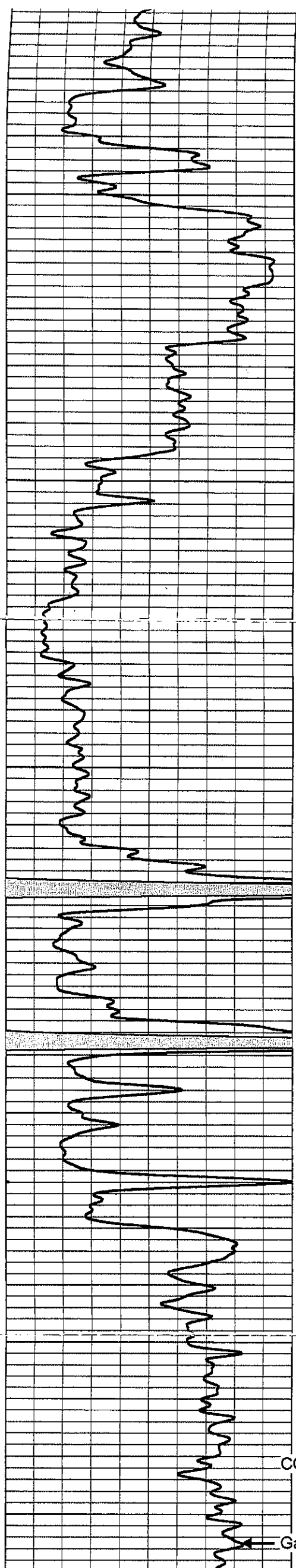
Database File: old rhea 17hp.db
Dataset Pathname: pass1
Presentation Format: gr-n-ccl
Dataset Creation: Fri Sep 26 12:38:49 2014 by Log SCH 111116
Charted by: Depth in Feet scaled 1:240

0	Gamma Ray (cps)	150	-1 CCL 1	100	Neutron (cps)	190
150	Gamma Ray (cps)	300				









750

800

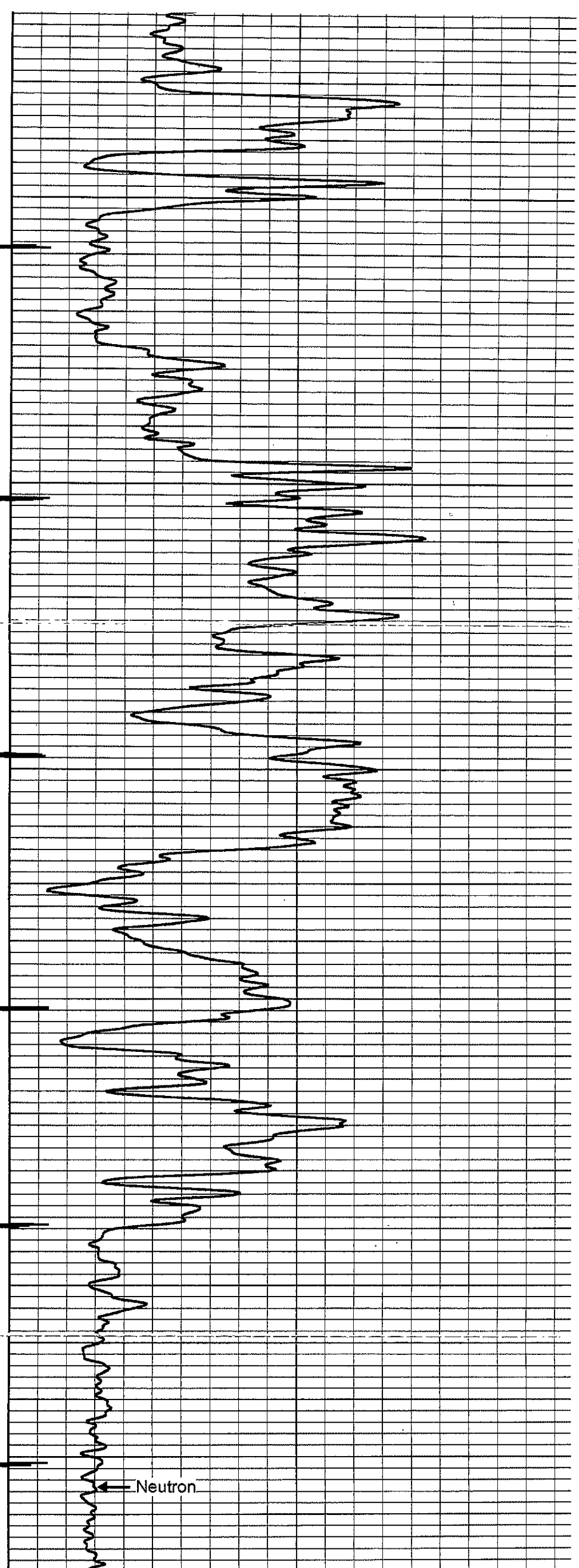
850

900

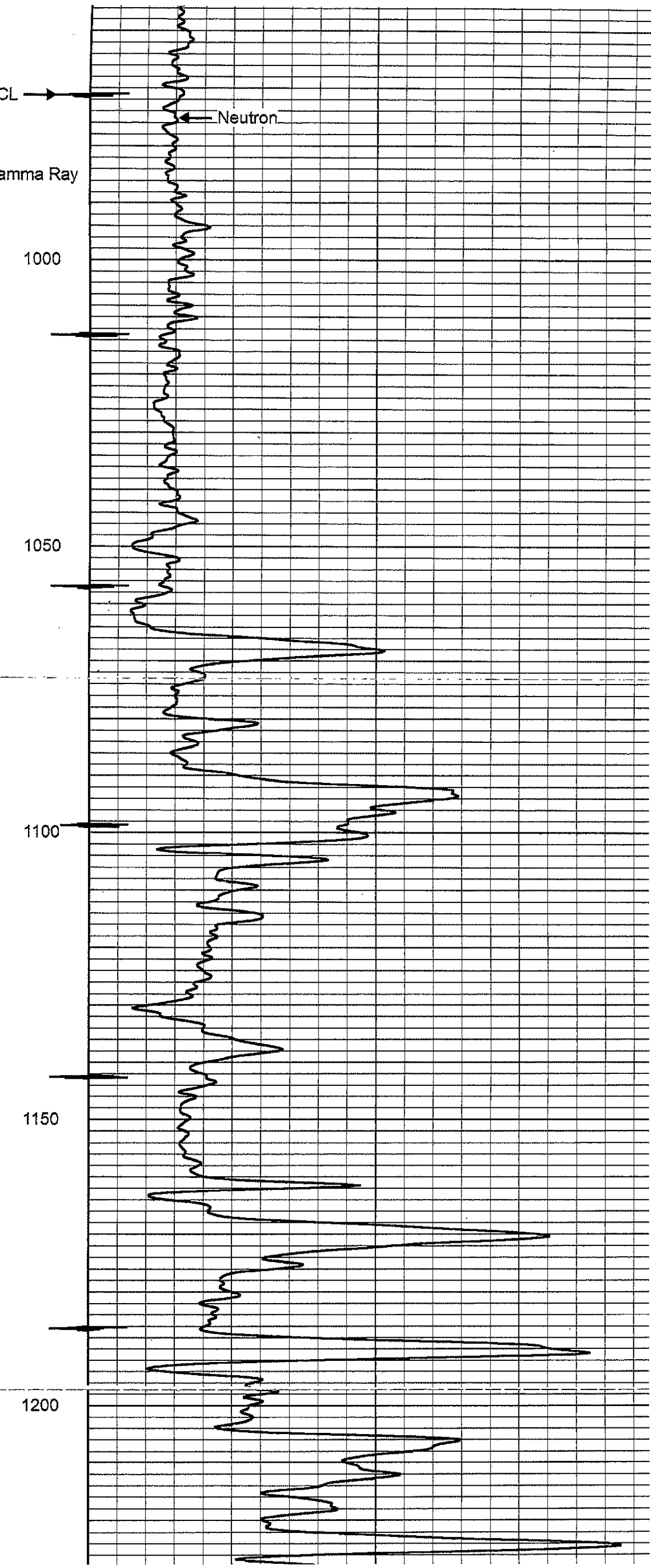
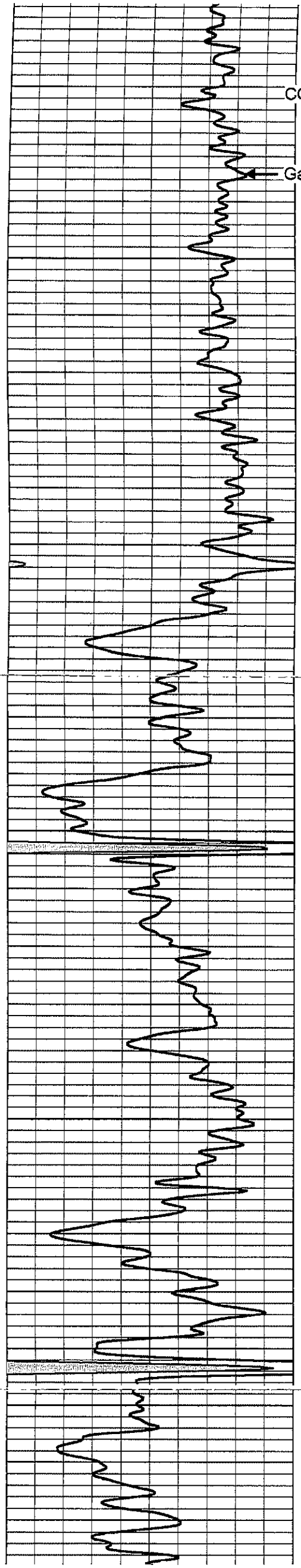
950

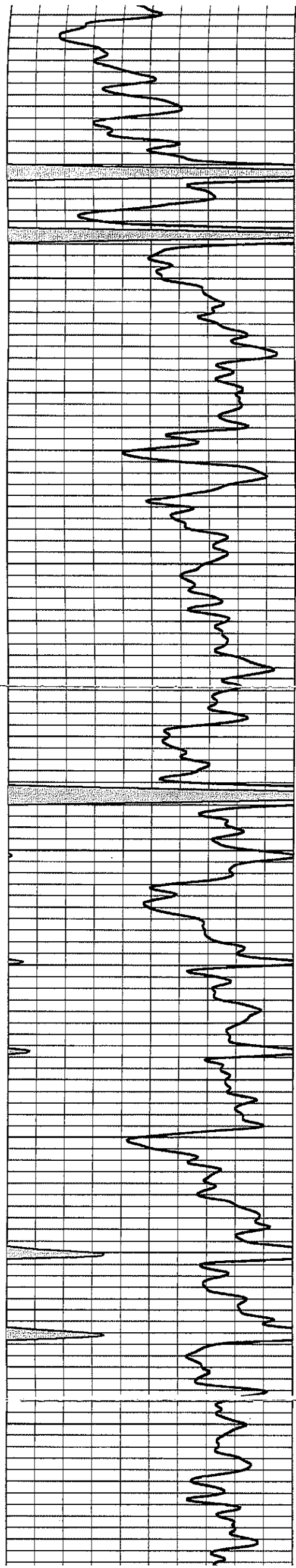
CCL

Gamma Ray



Neutron





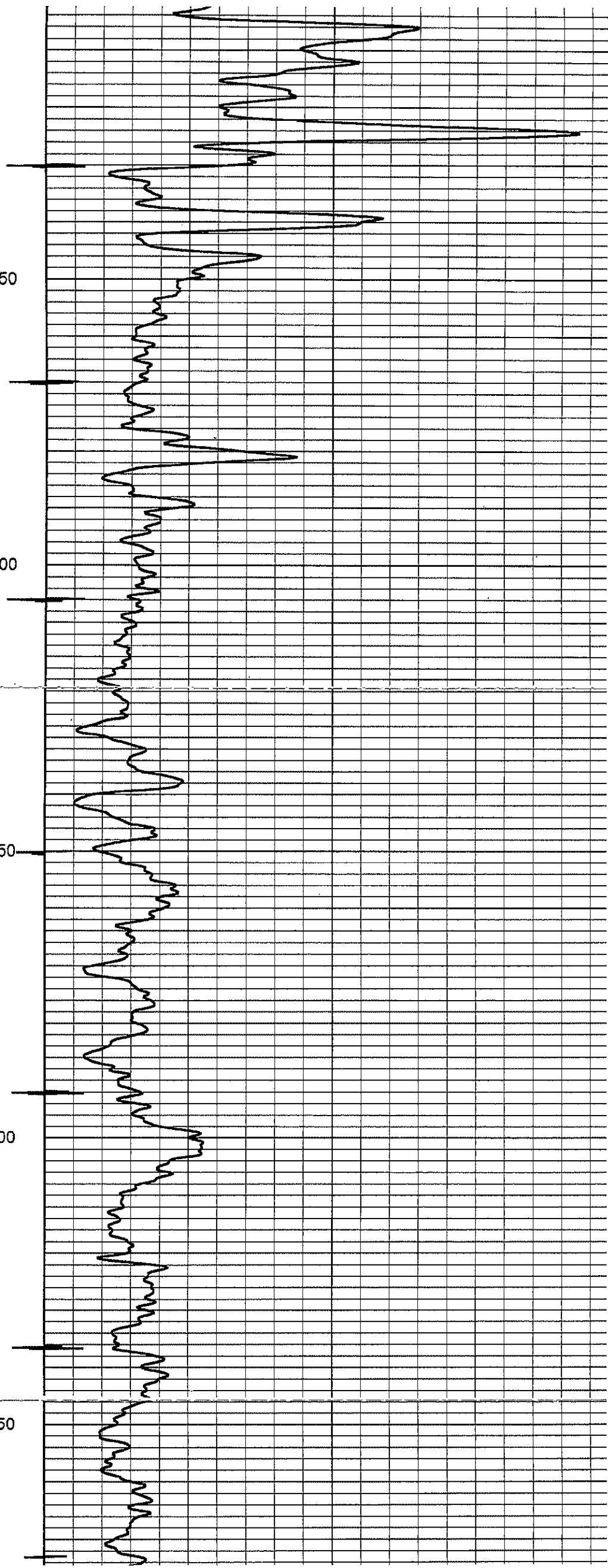
1250

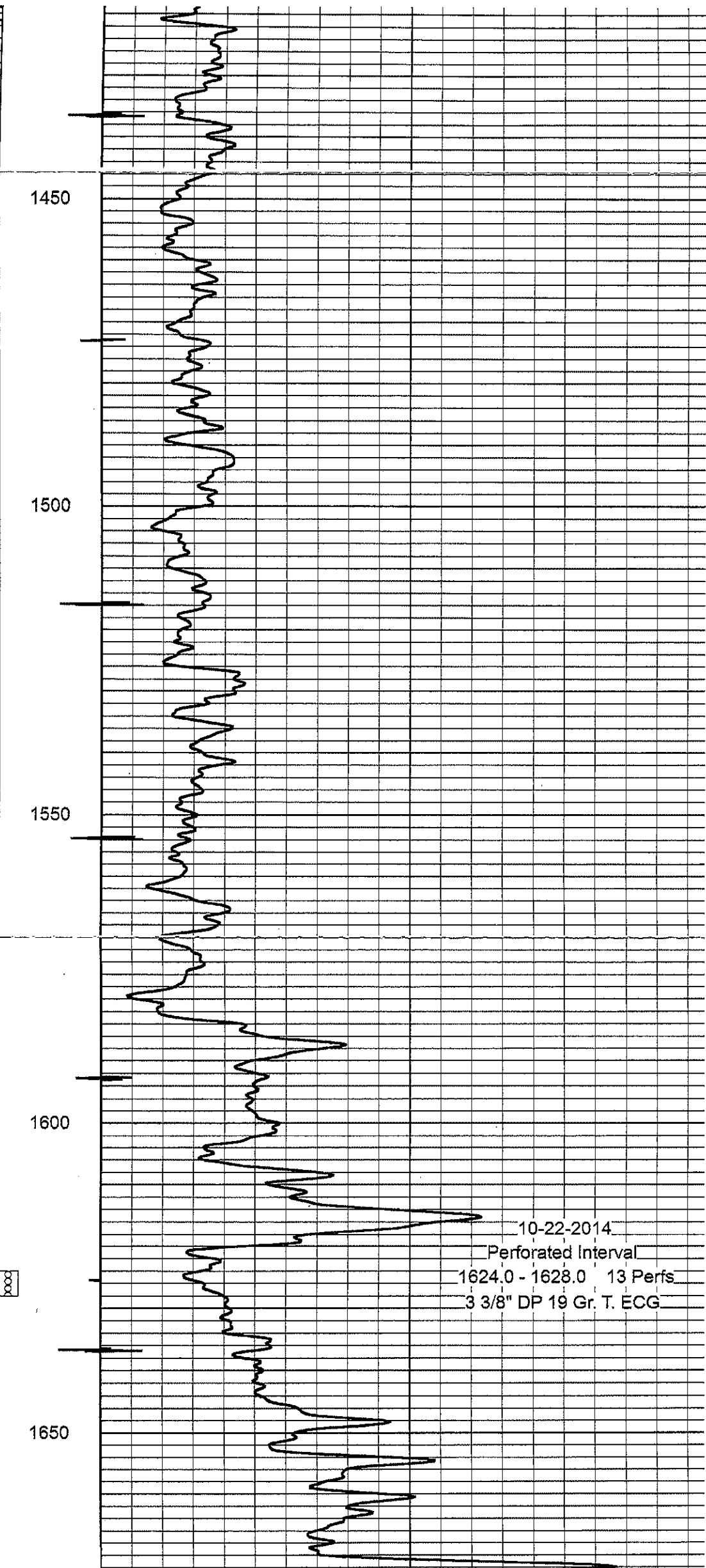
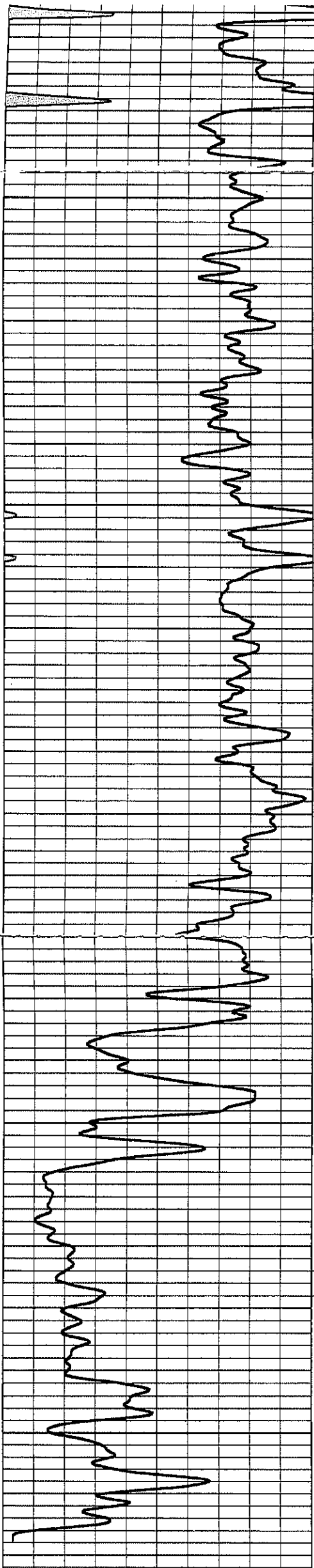
1300

1350

1400

1450





1450

1500

1550

1600

1650

10-22-2014
 Perforated Interval
 1624.0 - 1628.0 13 Perfs
 3 3/8" DP 19 Gr. T. ECG

0	Gamma Ray (cps)	150
150	Gamma Ray (cps)	300

-1 CCL 1
 100

Neutron (cps) 190