



**COMPLETION
& PRODUCTION
SERVICES CO.**

**COMPENSATED
DENSITY/NEUTRON
LOG**

Company RITCHIE EXPLORATION, INC.
Well #1 C&W
Field WILDCAT
County WICHITA
State KANSAS

Company RITCHIE EXPLORATION, INC.
Well #1 C&W
Field WILDCAT
County WICHITA
State KANSAS

Location: 1030' FNL & 1480' FWL
API #: 15-203-20273-0000
Other Services DIL
Permanent Datum GROUND LEVEL Elevation 3398
Log Measured From KELLY BUSHING 5' A.G.L.
Drilling Measured From KELLY BUSHING
Elevation
K.B. 3403
D.F. 3401
G.L. 3398

Date	7/19/14		
Run Number	ONE		
Depth Driller	5118		
Depth Logger	5119		
Bottom Logged Interval	5095		
Top Log Interval	3500		
Casing Driller	8 5/8" @ 262		
Casing Logger	NA		
Bit Size	7 7/8"		
Type Fluid in Hole	CHEMICAL MUD	CHLORIDES 7000 PPM	
Density / Viscosity	9.467		
pH / Fluid Loss	10.0/8.8		
Source of Sample	FLOWLINE		
Rm @ Meas. Temp	.75 @ 85F		
Rmt @ Meas. Temp	.56 @ 85F		
Rmc @ Meas. Temp	.90 @ 85F		
Source of Rmf / Rmc	MEASUREMENT		
Rm @ BHT	.50 @ 126F		
Time Circulation Stopped	2 HOURS		
Time Logger on Bottom	1:00 A.M.		
Maximum Recorded Temperature	126F		
Equipment Number	4010		
Location	HAYS, KANSAS		
Recorded By	JASON CAPPELLUCCI		
Witnessed By	MAX LOVELLY		

<<< Fold Here >>>

All interpretations are opinions based on inferences from electrical or other measurements and we cannot and do not guarantee the accuracy or correctness of any interpretation, and we shall not, except in the case of gross or willful negligence on our part, be liable or responsible for any loss, costs, damages, or expenses incurred or sustained by anyone resulting from any interpretation made by any of our officers, agents or employees. These interpretations are also subject to our general terms and conditions set out in our current Price Schedule.

Comments

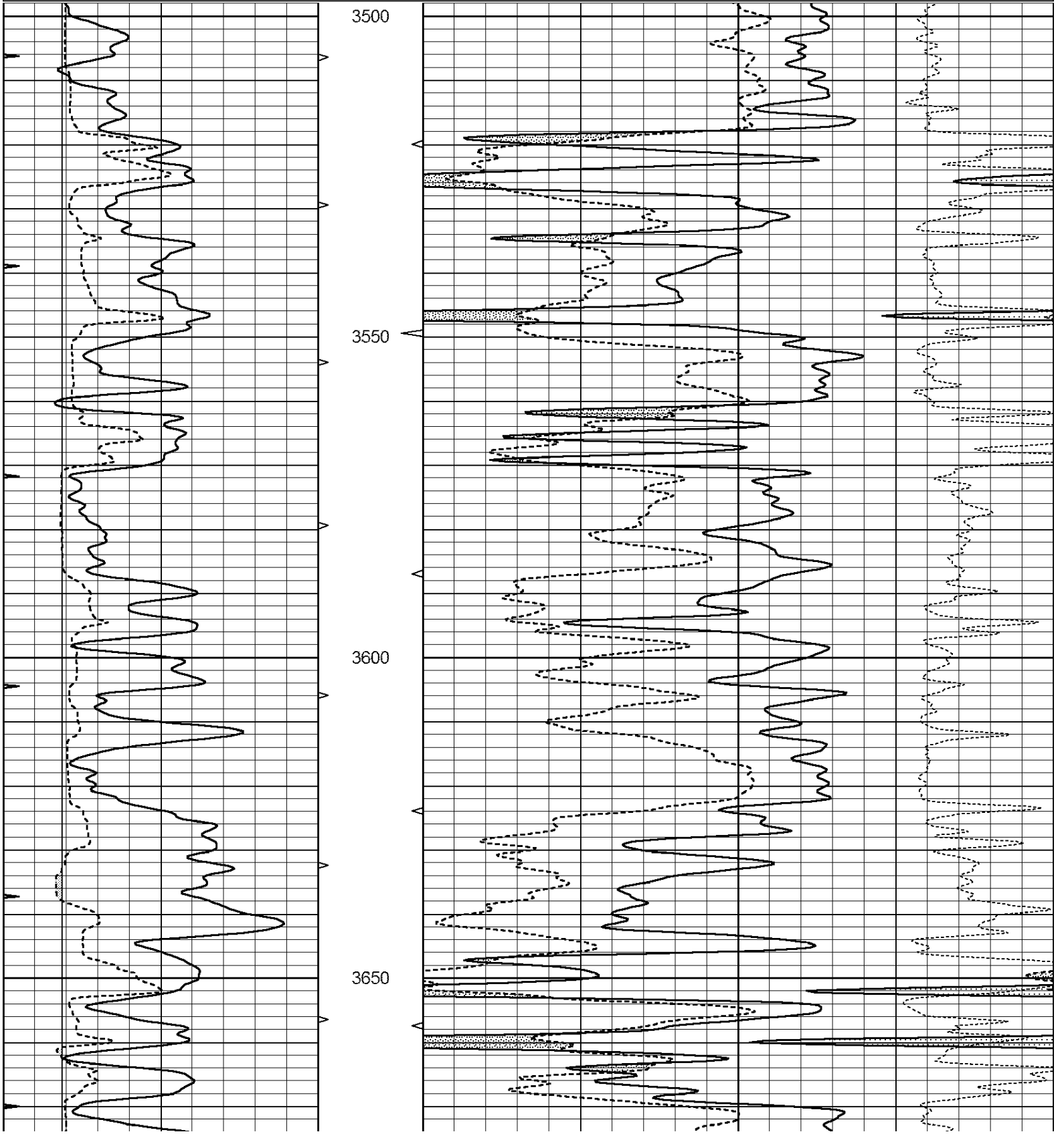
THANK YOU FOR USING NABORS, HAYS, KS. (785) 628-6395
DIRECTIONS:
LEOTI, KS. - 9 NORTH TO RD. G - 5 WEST TO RD. 7 - 3/4 NORTH - EAST INTO

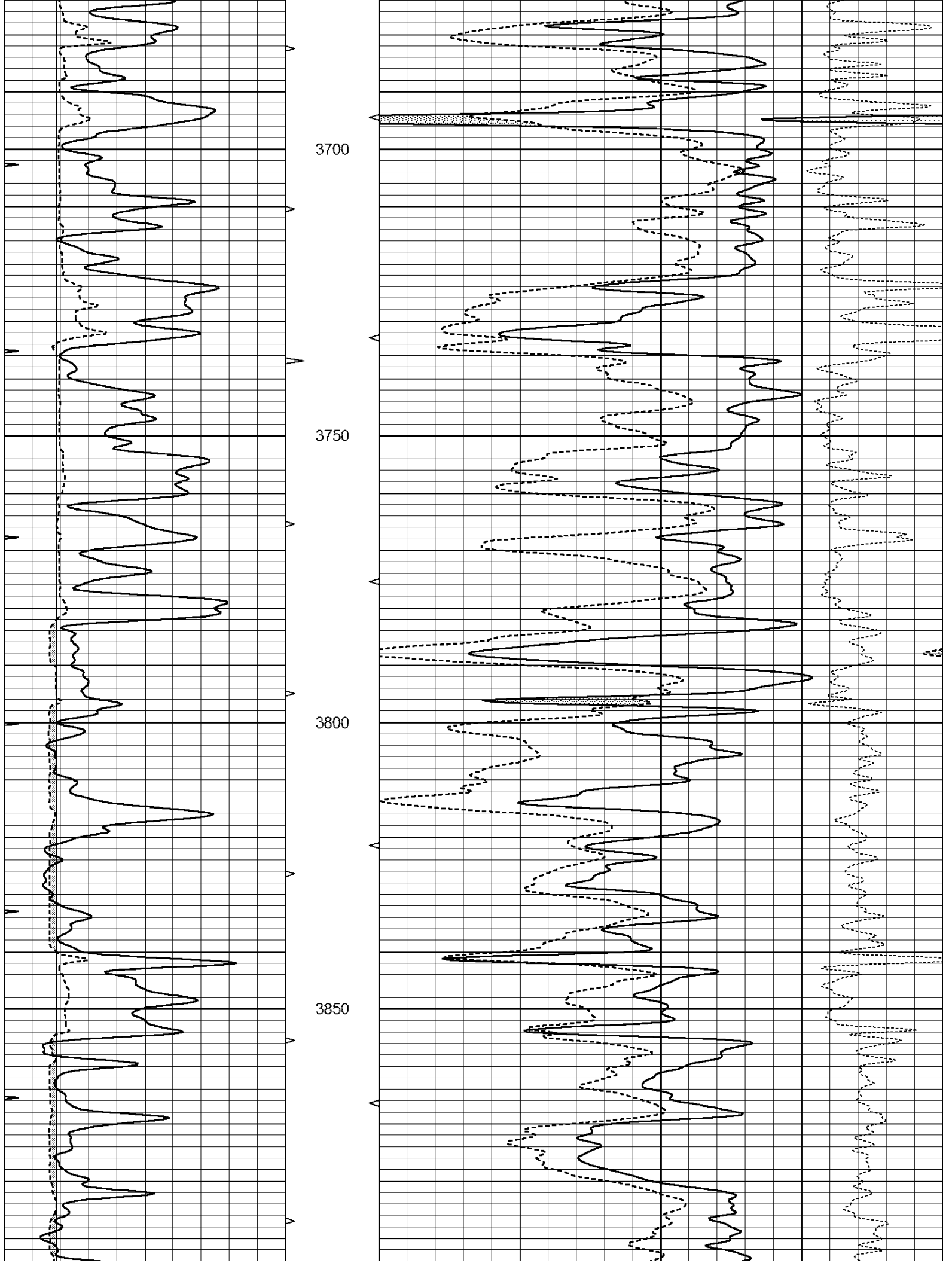


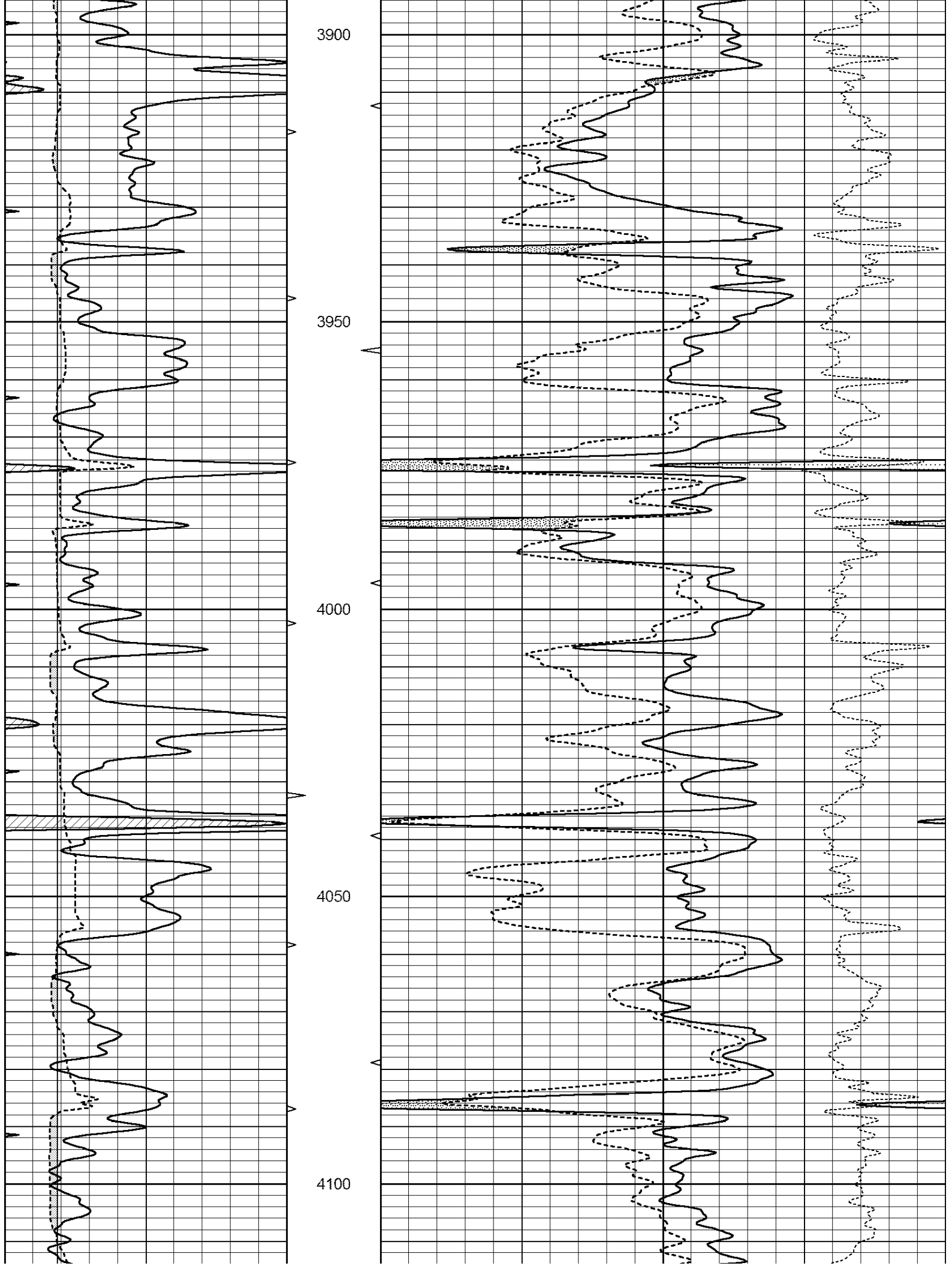
MAIN SECTION

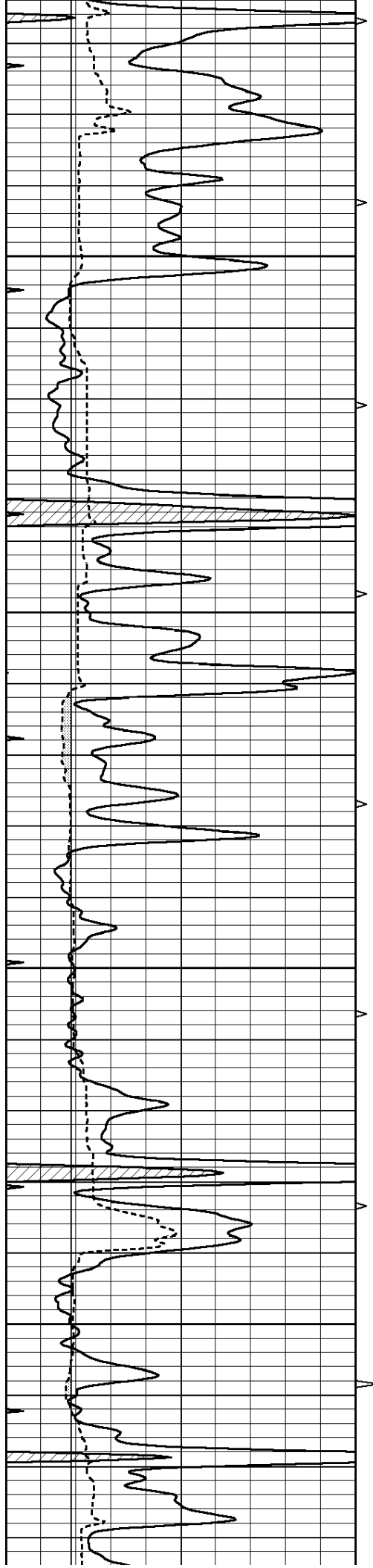
Database File: 24065ddn.db
 Dataset Pathname: pass3.1
 Presentation Format: den_neu
 Dataset Creation: Sat Jul 19 02:02:14 2014 by Calc Open-Cased 090629
 Charted by: Depth in Feet scaled 1:240

0	GAMMA RAY (GAPI)	150	ABHV	30	COMPENSATED DENSITY (pu)	-10
6	CALIPER (in)	16	10 (ft3)	0 30	COMPENSATED NEUTRON (pu)	-10
0	MINMK	20	TBHV		-0.25 CORRECTION (g/cc)	0.25
			0 (ft3)	10		







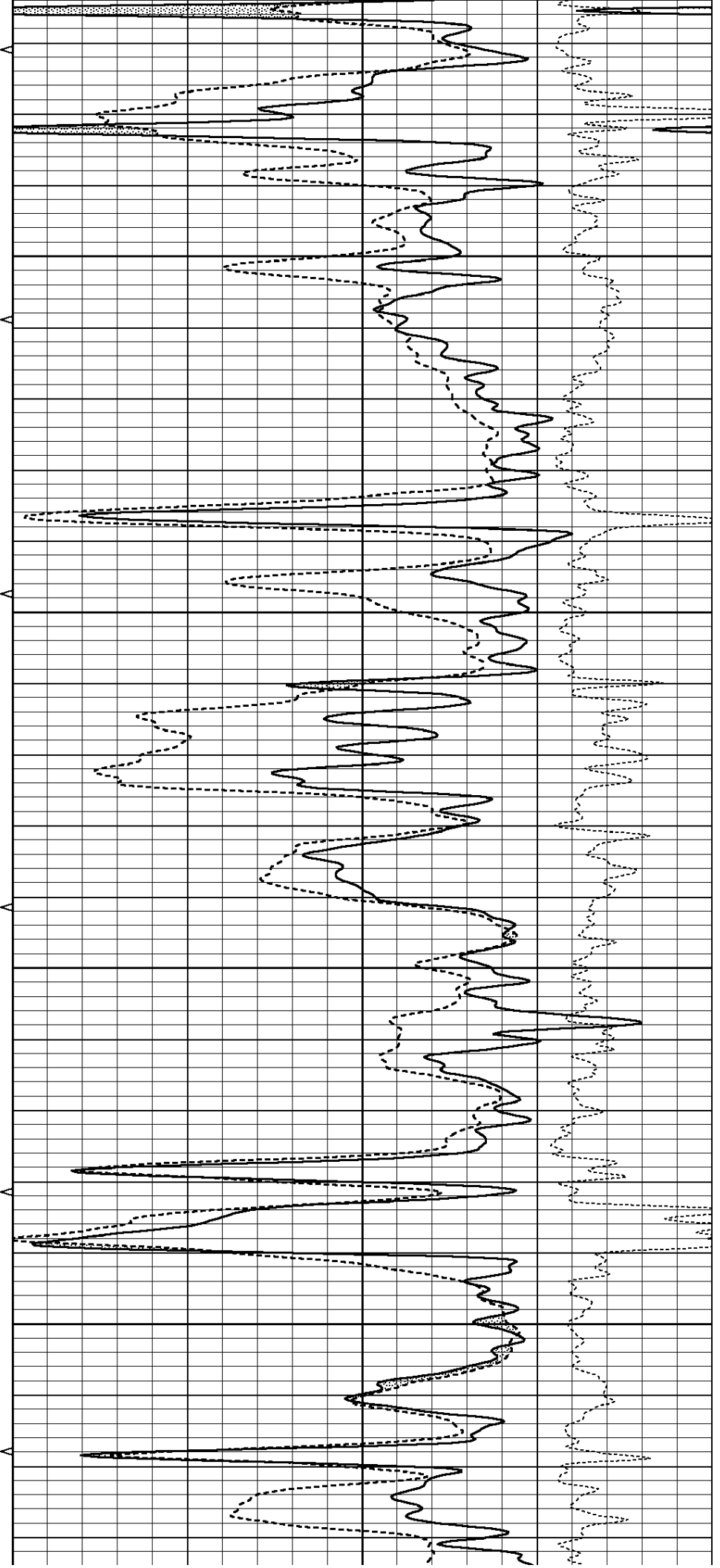


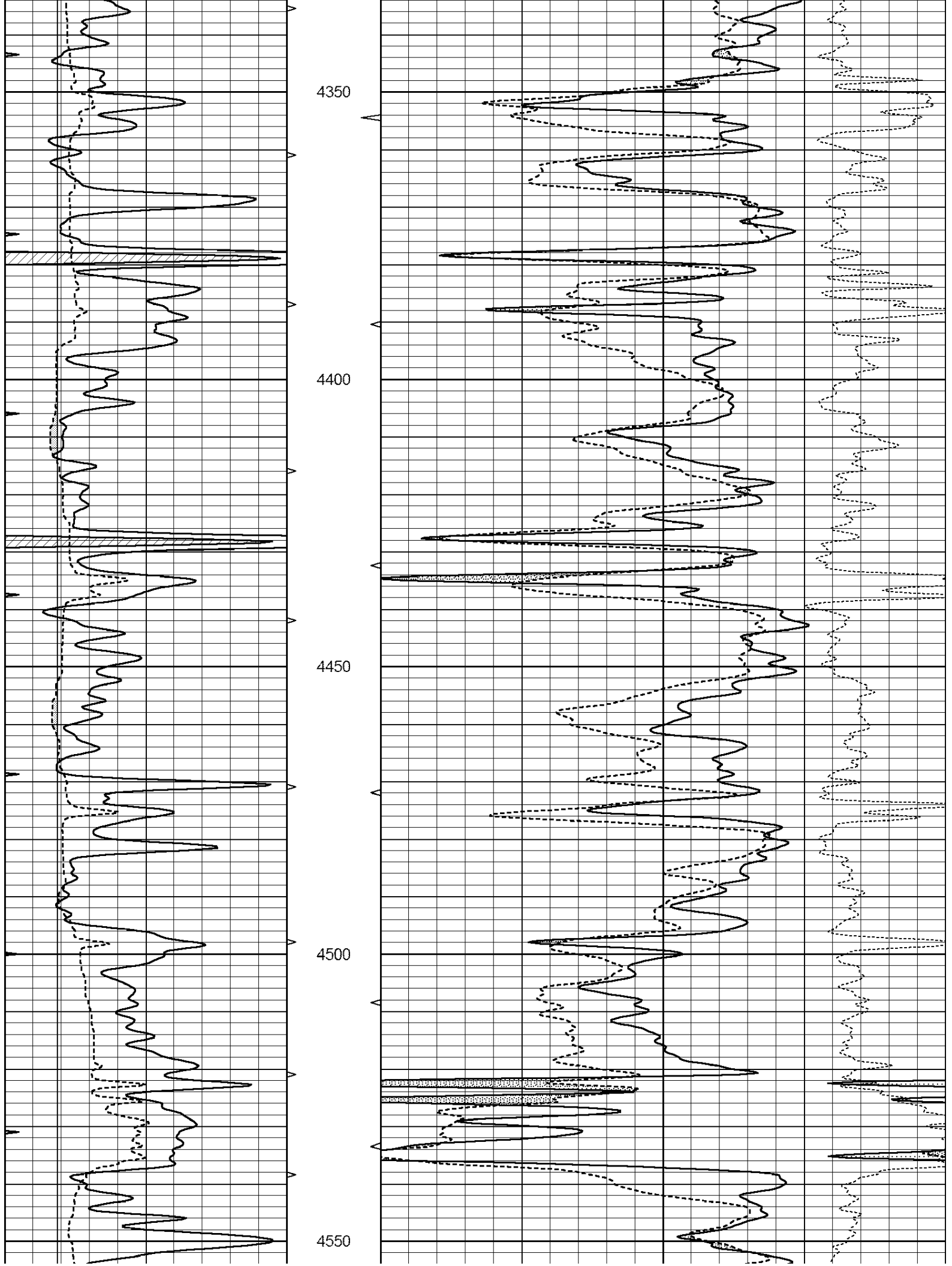
4150

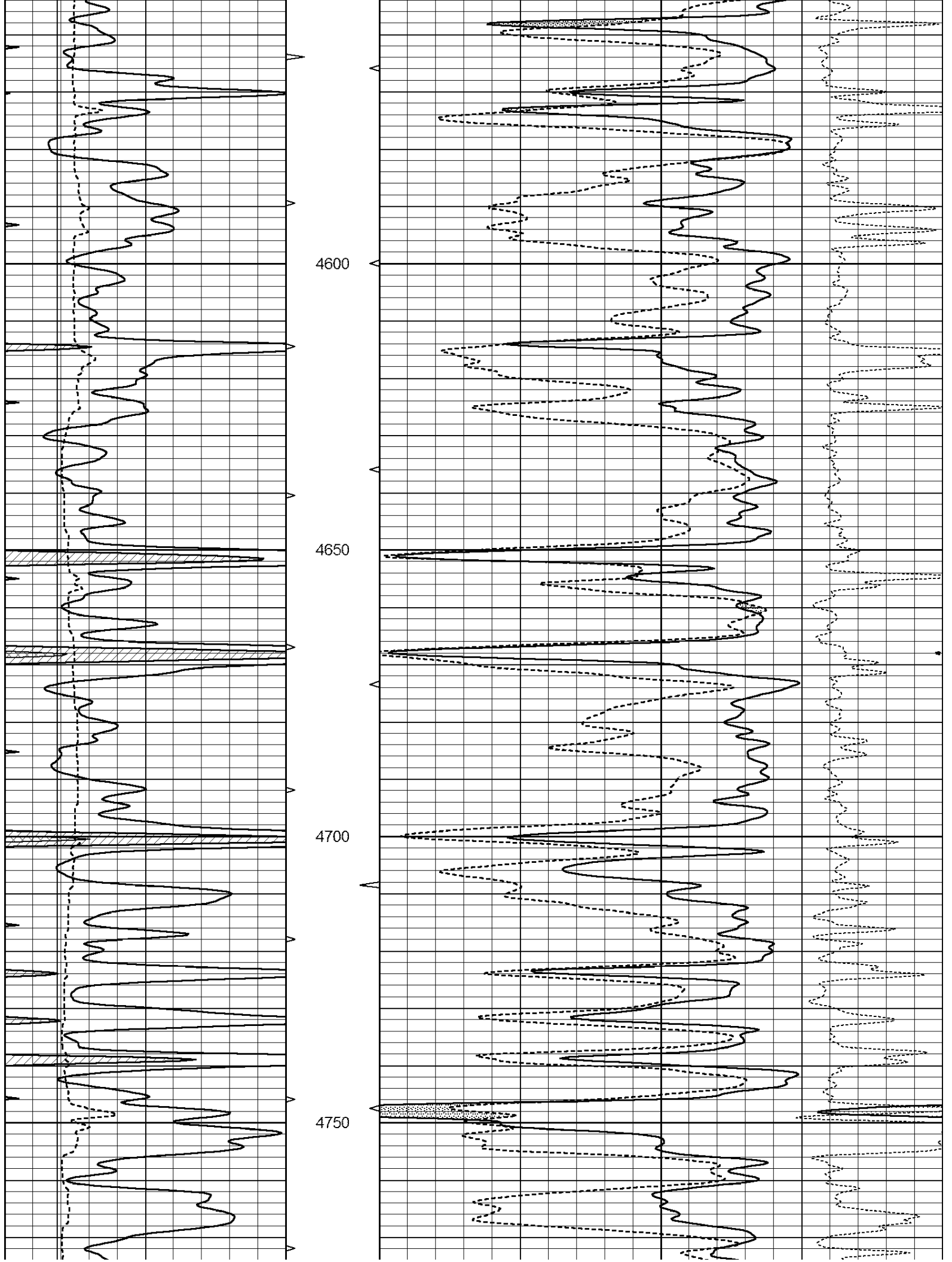
4200

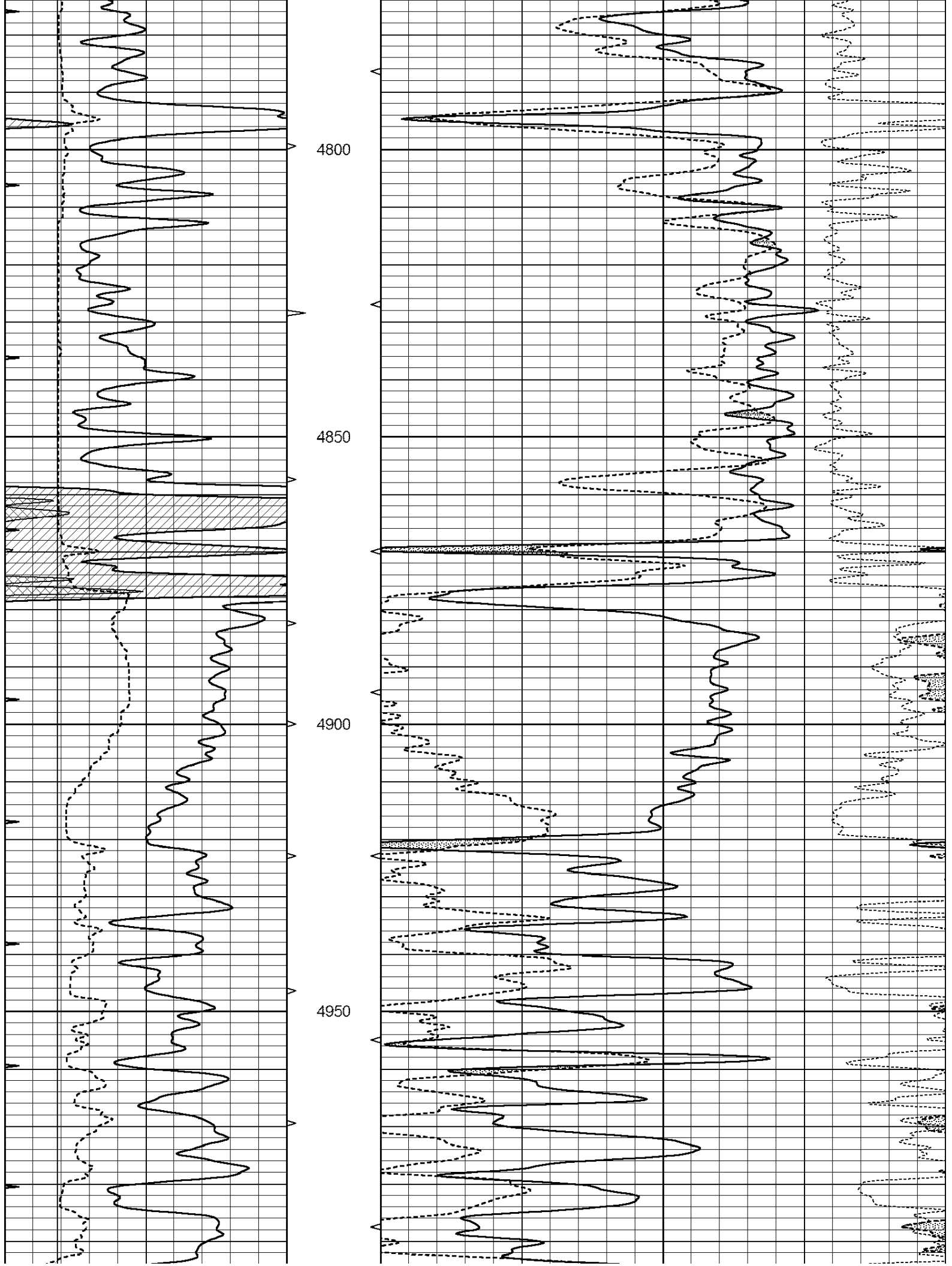
4250

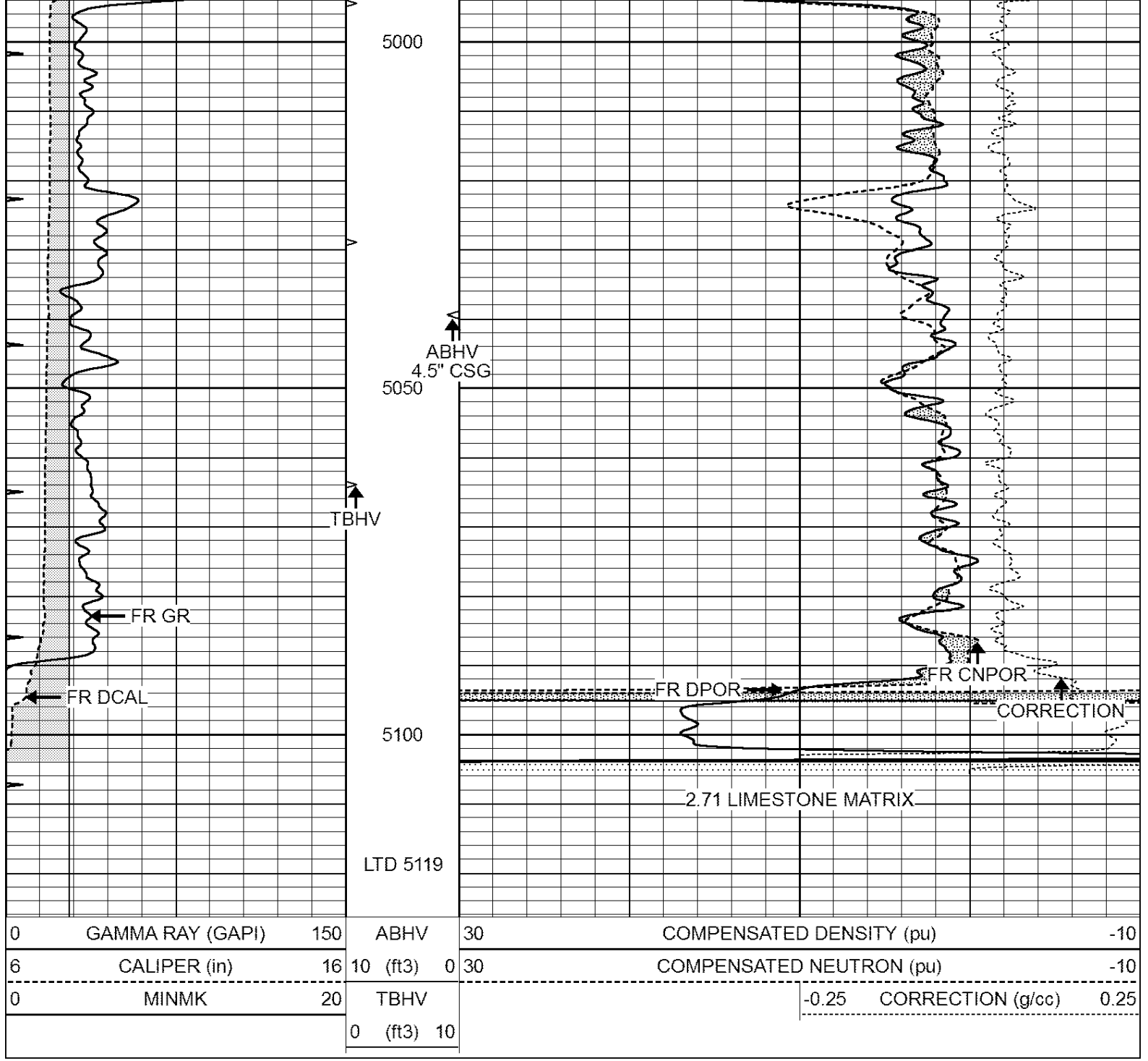
4300







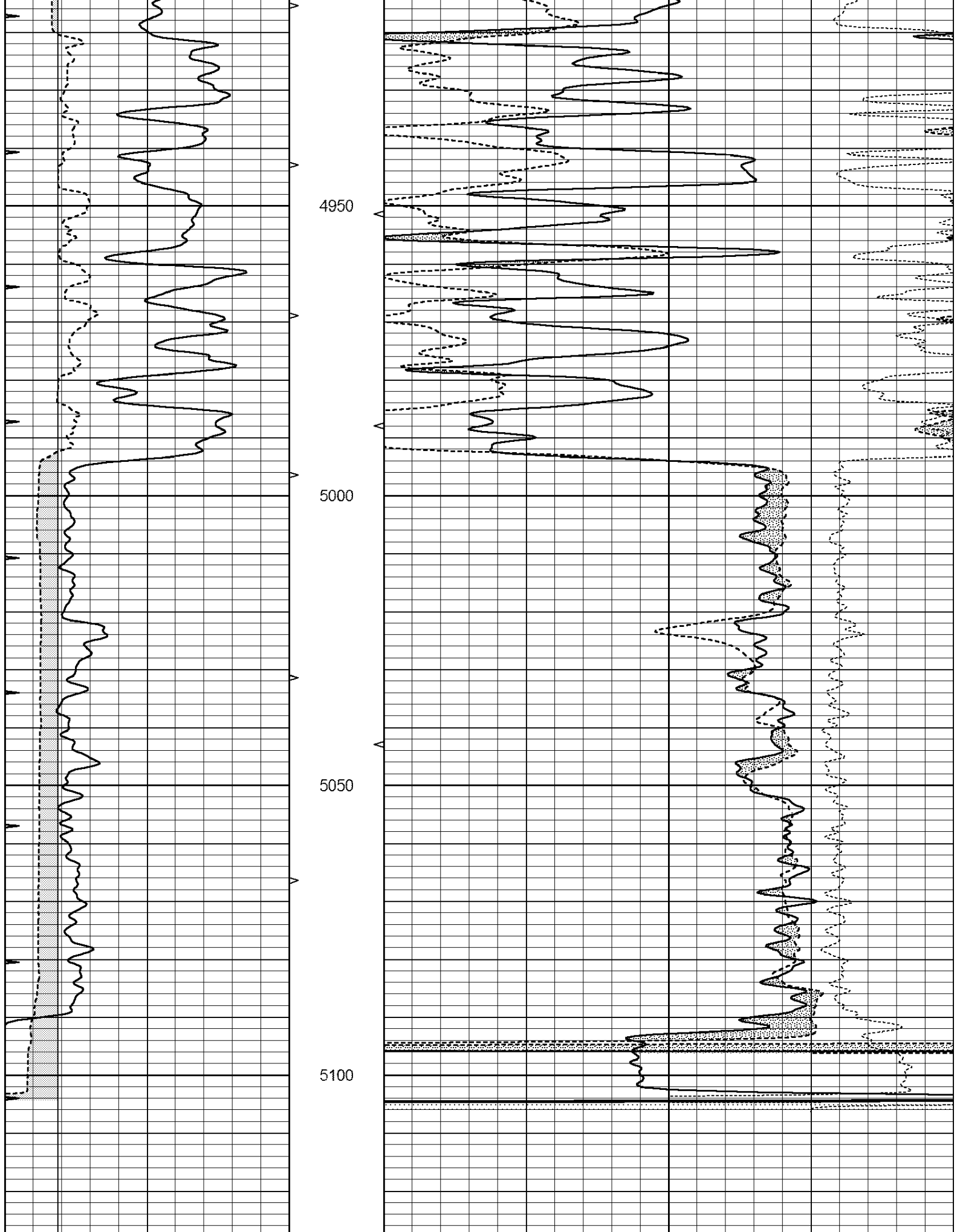




REPEAT SECTION

Database File: 24065ddn.db
 Dataset Pathname: pass2.2
 Presentation Format: den_neu
 Dataset Creation: Sat Jul 19 01:50:46 2014 by Calc Open-Cased 090629
 Charted by: Depth in Feet scaled 1:240

0	GAMMA RAY (GAPI)	150	ABHV	30	COMPENSATED DENSITY (pu)	-10
6	CALIPER (in)	16	10 (ft3)	0 30	COMPENSATED NEUTRON (pu)	-10
0	MINMK	20	TBHV		-0.25	CORRECTION (g/cc) 0.25
			0 (ft3)	10		



0	GAMMA RAY (GAPI)	150	ABHV	30	COMPENSATED DENSITY (pu)	-10
6	CALIPER (in)	16 10 (ft3)	0 30		COMPENSATED NEUTRON (pu)	10

0	MINMK	20	TBHV	-0.25	CORRECTION (g/cc)	0.25
			0 (ft3) 10			

Calibration Report

Database File: 24065ddn.db
 Dataset Pathname: pass2.2
 Dataset Creation: Sat Jul 19 01:50:46 2014 by Calc Open-Cased 090629

Dual Induction Calibration Report

Serial-Model: PROBE8-DILG
 Surface Cal Performed: Fri Aug 01 06:33:19 2008
 Downhole Cal Performed: Mon Jul 28 11:08:27 2008
 After Survey Verification Performed: Mon Jul 28 11:08:27 2008

Surface Calibration

Loop:	Readings			References			Results	
	Air	Loop	V	Air	Loop		m	b
Deep	0.015	0.648	V	0.000	400.000	mmho/m	632.616	-9.730
Medium	0.029	0.796	V	0.000	464.000	mmho/m	605.049	-17.680
Internal:	Zero	Cal		Zero	Cal		m	b
Deep	0.017	0.657	V	0.000	400.000	mmho/m	625.153	-10.619
Medium	0.016	0.757	V	0.000	464.000	mmho/m	625.992	-9.739

Downhole Calibration

	Readings			References			Results	
	Zero	Cal		Zero	Cal		m'	b'
Deep	0.000	0.000	mmho/m	2.011	405.777	mmho/m	1.000	0.000
Medium	0.000	0.000	mmho/m	7.590	503.393	mmho/m	1.000	0.000
LL3		7.500	V		1500.000	Ohm-m		
		0.000	V		20.000	Ohm-m		
		-7.200	V		3800.000	mmho-m		

After Survey Verification

	Readings			Targets			Results	
	Zero	Cal		Zero	Cal		m'	b'
Deep	0.000	0.000	mmho/m	0.000	0.000	mmho/m	0.000	0.000
Medium	0.000	0.000	mmho/m	0.000	0.000	mmho/m	0.000	0.000
LL3		1.000	Ohm-m		1.000	Ohm-m		
		0.000	Ohm-m		0.000	Ohm-m		
		1.000	mmho-m		1.000	mmho-m		

Compensated Density Calibration Report

Serial-Model: GEAR3-GEARHART
 Source / Verifier: 143 / 143
 Master Calibration Performed: Fri Jan 04 15:48:16 2013
 Before Survey Verification Performed:
 After Survey Verification Performed:

Master Calibration

	Density		Far Detector	Near Detector	
Magnesium	1.710	g/cc	935.36	501.55	cps
Aluminum	2.580	g/cc	209.32	357.01	cps

Spine Angle = 77.21

Density/Spine Ratio = 0.567

	Size		Reading	
Small Ring	8.00	in	4.29	V
Large Ring	14.00	in	6.24	V

Before Survey Verification				
	Target		Measured	
		g/cc		g/cc
		g/cc		g/cc
		g/cc		g/cc

After Survey Verification				
	Target		Measured	
		g/cc		g/cc
		g/cc		g/cc
		g/cc		g/cc

Compensated Neutron Calibration Report

Serial Number:	61
Tool Model:	G

CALIBRATION						
	Detector	Readings		Target	Normalization	
	Short Space	1.00	cps	1.00	cps	1.0000
	Long Space	1.00	cps	1.00	cps	1.0000

PRE-SURVEY VERIFICATION						
	Detector	Readings		Measured	Target	
1)	Short Space		cps			
	Long Space		cps	pu		pu
2)	Short Space		cps			
	Long Space		cps	pu		
3)	Short Space		cps			
	Long Space		cps	pu		

POST-SURVEY VERIFICATION						
	Detector	Readings		Measured	Target	
1)	Short Space		cps			
	Long Space		cps	pu		pu
2)	Short Space		cps			
	Long Space		cps	pu		pu
3)	Short Space		cps			
	Long Space		cps	pu		pu

Gamma Ray Calibration Report

Serial Number:	GR6
Tool Model:	OPEN
Performed:	Sat May 31 01:22:06 2014
Calibrator Value:	150.0
	GAPI
Background Reading:	0.0
Calibrator Reading:	276.0
	cps
	cps

Sensitivity:

0.7535

GAPI/cps