



MIDWEST SURVEYS
 LOGGING - PERFORATING - CONSULTING SERVICES
 P.O. Box 68, Osawatomie, KS 66064
 913 / 755 - 2128

GAMMA RAY / NEUTRON / CCL

File No. _____

Company **JTC Oil, Inc.**

Well **Renner No. P-12**

Field **Paola - Rantoul**

County **Miami** State **Kansas**

Location **495' FSL & 330' FEL**
N/2-SE-SE-SE

Other Services _____

Sec. **16** Twp. **17s** Rge. **22e**

Permanent Datum **GL** Elevation **NA**

Log Measured From **GL**

Drilling Measured From **GL**

Date **09-27-2014**

Run Number **One**

Depth Driller **600.0**

Depth Logger **589.0**

Bottom Logged Interval **588.0**

Top Log Interval **20.0**

Fluid Level **Full**

Type Fluid **Water**

Density / Viscosity **NA**

Salinity - PPM Cl **NA**

Max Recorded Temp **NA**

Estimated Cement Top **0.0**

Equipment No. _____

Location **107 Osawatomie**

Recorded By **Steve Winkisch**

Witnessed By **Tom Cain**

BORE-HOLE RECORD				CASING RECORD			
Run No.	BIT	FROM	TO	SIZE	WGT.	FROM	TO
One	9.875"	0.0	20.0	7.00"	17.0#	0.0	20.0
Two	5.675"	20.0	600.0	2.875"	6.5#	0.0	592.0

<<< Fold Here >>>

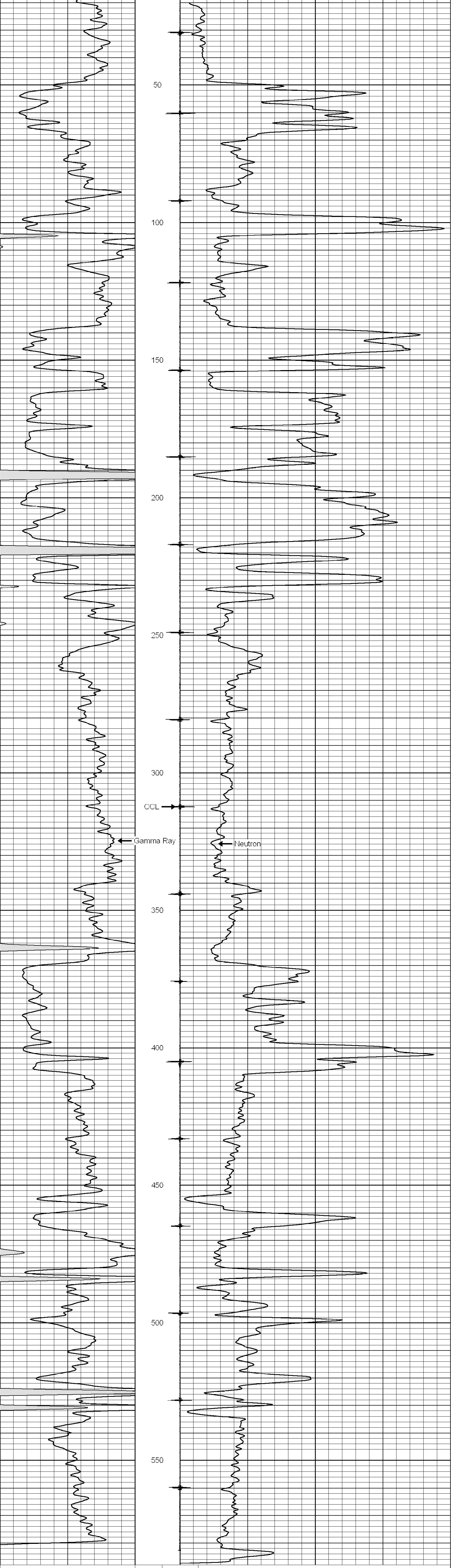
All interpretations are opinions based on inferences from electrical or other measurements and we cannot and do not guarantee the accuracy or correctness of any interpretation, and we shall not, except in the case of gross or willful negligence on our part, be liable or responsible for any loss, costs, damages, or expenses incurred or sustained by anyone resulting from any interpretation made by any of our officers, agents or employees. These interpretations are also subject to our general terms and conditions set out in our current Price Schedule.

Comments

Drilling Contractor :
JTC Oil, Inc.

Database File: **renner 12p.db**
 Dataset Pathname: **pass1**
 Presentation Format: **gr-n-ccl**
 Dataset Creation: **Sat Sep 27 13:05:37 2014 by Log SCH 111116**
 Charted by: **Depth in Feet scaled 1:240**

0	Gamma Ray (cps)	150	-1 CCL 1	10	Neutron (cps)	2100
150	Gamma Ray (cps)	300				



0	Gamma Ray (cps)	150	-1 CCL 1	10	Neutron (cps)	2100
150	Gamma Ray (cps)	300				