



**COMPLETION
& PRODUCTION
SERVICES CO.**

**COMPENSATED
DENSITY / NEUTRON
PE LOG**

Company BLUERIDGE PETROLEUM CORP.
Well MAY #1-15
Field
County DECATUR State KANSAS

Company BLUERIDGE PETROLEUM CORP.
Well MAY #1-15
Field
County DECATUR
State KANSAS

Location: API #: 15-039-21207-00-00
330' FSL & 710' FWL
W/2 - SE - SW - SW
SEC 15 TWP 2S RGE 30W
Permanent Datum GROUND LEVEL Elevation 2784
Log Measured From KELLY BUSHING 9' A.G.L.
Drilling Measured From KELLY BUSHING
Other Services
DIL
SON/MEL
Elevation
K.B. 2793
D.F. 2791
G.L. 2784

Date	9/12/14		
Run Number	ONE		
Depth Driller	4080		
Depth Logger	4081		
Bottom Logged Interval	4057		
Top Log Interval	3500		
Casing Driller	8 5/8 @ 310'		
Casing Logger	311'		
Bit Size	7.875		
Type Fluid in Hole	CHEMICAL MUD		
Density / Viscosity	9.0/67	CHLORIDES 2,000 PPM	
pH / Fluid Loss	9.0/6.4		
Source of Sample	FLOWLINE		
Rm @ Meas. Temp	2.10 @ 58F		
Rmf @ Meas. Temp	1.58 @ 58F		
Rmc @ Meas. Temp	2.52 @ 58F		
Source of Rmf / Rmc	MEASURED		
Rm @ BHT	1.04 @ 117F		
Time Circulation Stopped	2 HOURS		
Time Logger on Bottom			
Maximum Recorded Temperature	117F		
Equipment Number	3802		
Location	HAYS, KS.		
Recorded By	JEFF GRONEMWEG		
Witnessed By	CLINT MUSGROVE		

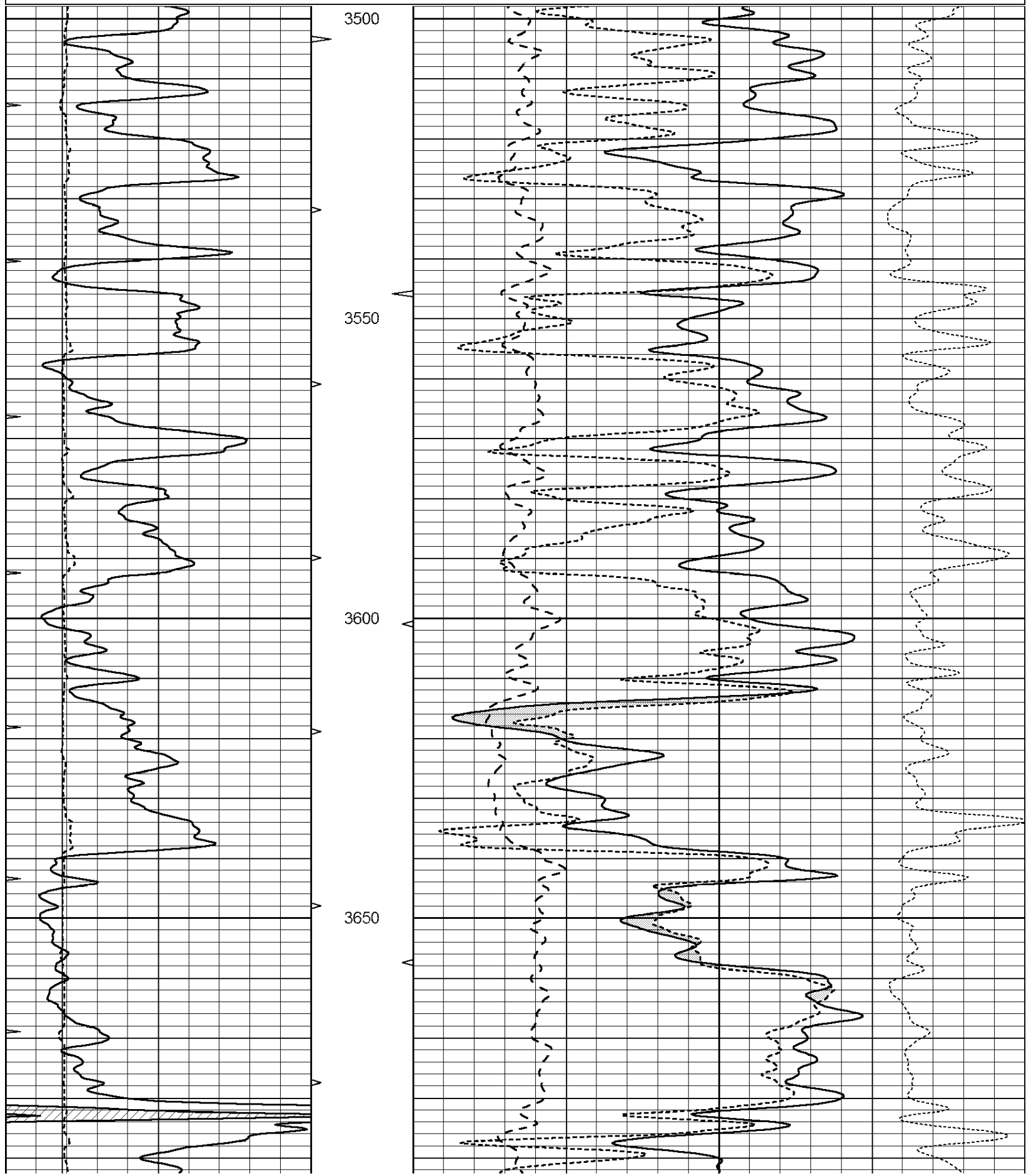
<<< Fold Here >>>

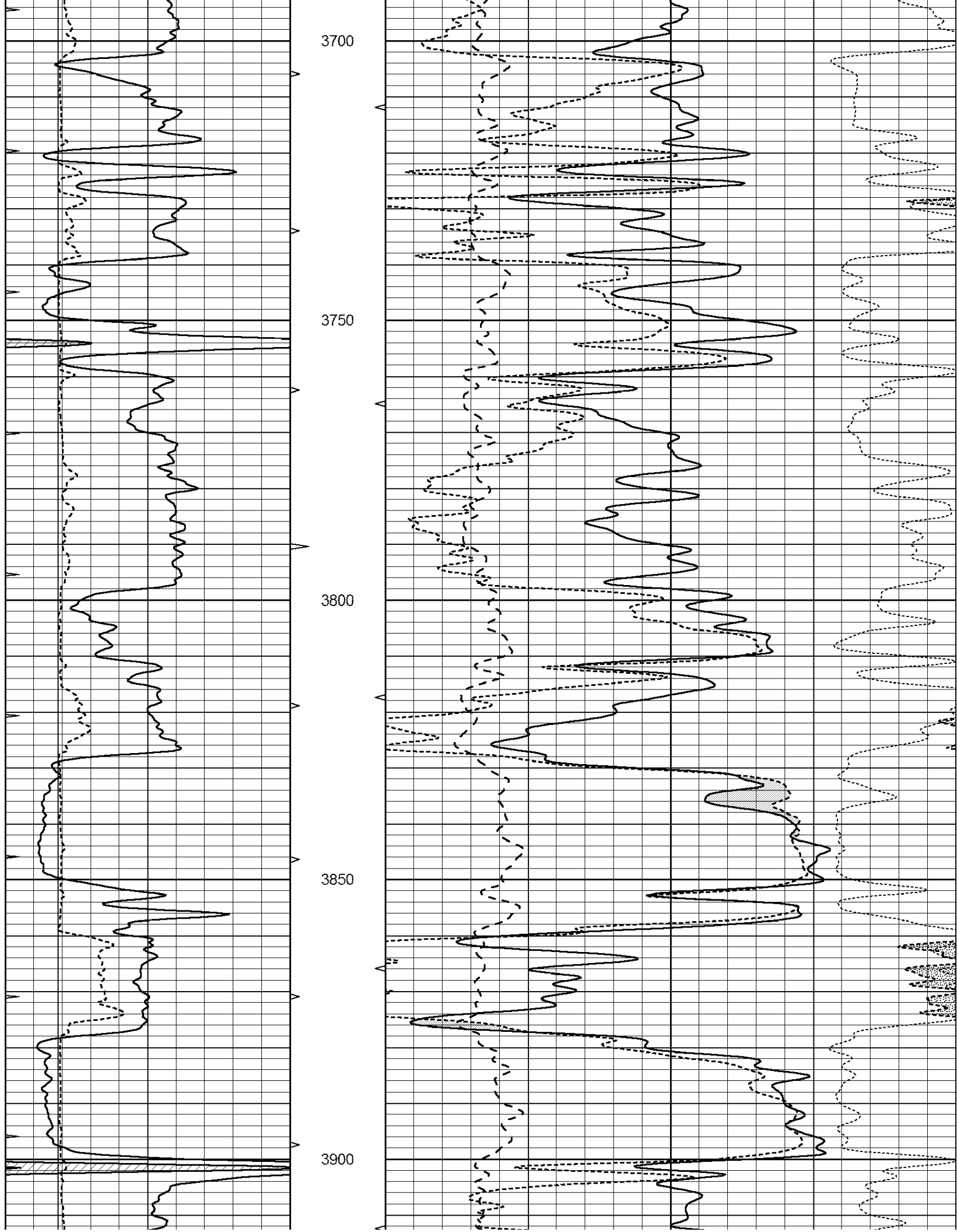
All interpretations are opinions based on inferences from electrical or other measurements and we cannot and do not guarantee the accuracy or correctness of any interpretation, and we shall not, except in the case of gross or willful negligence on our part, be liable or responsible for any loss, costs, damages, or expenses incurred or sustained by anyone resulting from any interpretation made by any of our officers, agents or employees. These interpretations are also subject to our general terms and conditions set out in our current Price Schedule.

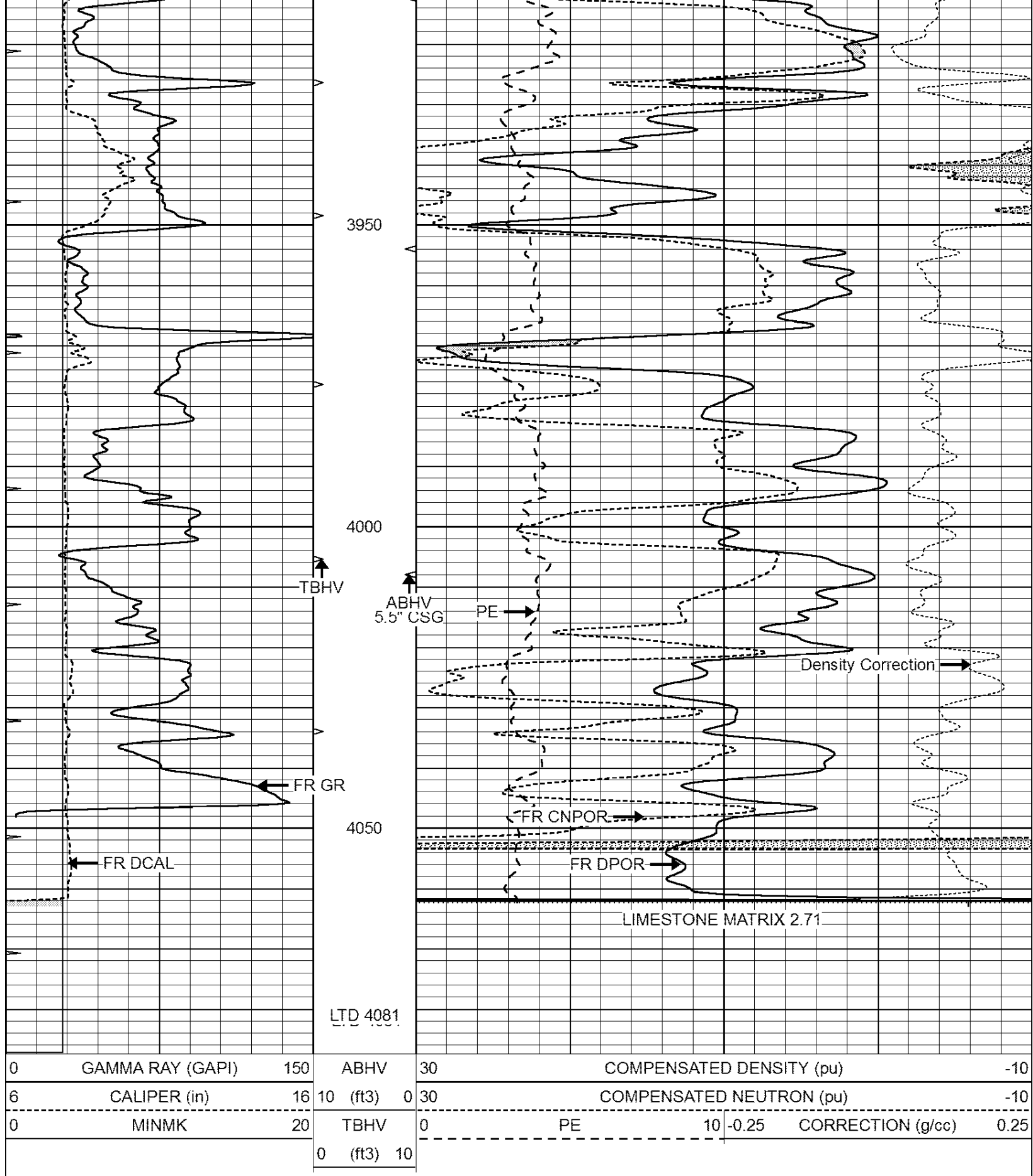
Comments

NABORS COMPLETION & PRODUCTION SERVICES CO.
785 (628 - 6395)
THANK YOU FOR YOUR BUSINESS
DIRECTIONS : OBERLIN, KS - 7 MILES WEST - 1 MILE NORTH
1/2 MILE WEST - 3 MILES NORTH - WEST INTO

0	GAMMA RAY (GAPI)	150	ABHV	30	COMPENSATED DENSITY (pu)		-10
6	CALIPER (in)	16	10 (ft3)	0 30	COMPENSATED NEUTRON (pu)		-10
0	MINMK	20	TBHV	0	PE	10 -0.25	CORRECTION (g/cc) 0.25
			0 (ft3)	10			



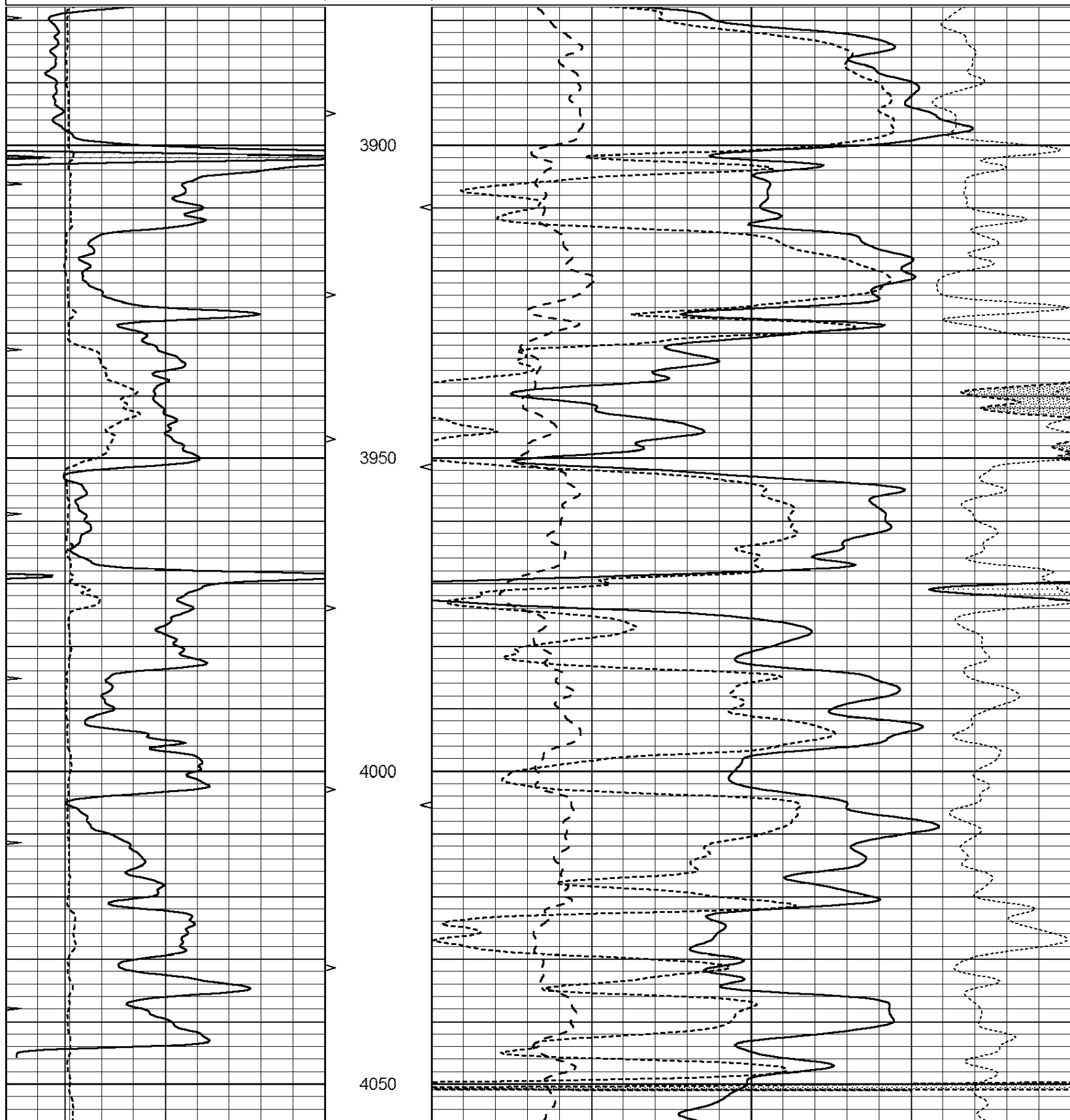




REPEAT SECTION

Database File: 25815pe.db
 Dataset Pathname: pass2.5
 Presentation Format: _ldt_neu
 Dataset Creation: Fri Sep 12 09:02:38 2014
 Charted by: Depth in Feet scaled 1:240

0	GAMMA RAY (GAPI)	150	ABHV	30	COMPENSATED DENSITY (pu)		-10
6	CALIPER (in)	16	10 (ft3)	0	COMPENSATED NEUTRON (pu)		-10
0	MINMK	20	TBHV	0	PE	10 -0.25	CORRECTION (g/cc) 0.25
			0 (ft3)	10			



0	GAMMA RAY (GAPI)	150	ABHV	30	COMPENSATED DENSITY (pu)			-10	
6	CALIPER (in)	16	10 (ft3)	0	30	COMPENSATED NEUTRON (pu)			-10
0	MINMK	20	TBHV	0	PE	10	-0.25	CORRECTION (g/cc)	0.25
			0 (ft3)	10					

Calibration Report

Database File: 25815pe.db
 Dataset Pathname: pass3.4
 Dataset Creation: Fri Sep 12 09:34:37 2014

Dual Induction Calibration Report

Serial-Model: PROBE7-DILG
 Surface Cal Performed: Sat Aug 02 01:54:49 2014
 Downhole Cal Performed: Sat Jan 19 19:51:38 2013
 After Survey Verification Performed: Sat Jan 19 19:51:38 2013

Surface Calibration

Loop:	Readings			References			Results	
	Air	Loop		Air	Loop		m	b
Deep	0.793	0.790	V	0.000	400.000	mmho/m	550.000	14.000
Medium	0.992	1.002	V	0.000	464.000	mmho/m	580.000	-32.000
Internal:	Zero	Cal		Zero	Cal		m	b
Deep	0.041	0.642	V	0.000	400.000	mmho/m	664.874	-27.011
Medium	0.035	0.802	V	0.000	464.000	mmho/m	604.936	-21.367

Downhole Calibration

	Readings			References			Results	
	Zero	Cal		Zero	Cal		m'	b'
Deep	135384.000	27094.500	mmho/m	135400.000	27082.400	mmho/m	1.000	-19.259
Medium	-47330.100	-9381.740	mmho/m	-47327.100	-9389.280	mmho/m	1.000	-10.154
LL3		7.322	V		1400.000	Ohm-m		
		0.038	V		20.000	Ohm-m		
		-7.273	V		4000.000	mmho-m		

After Survey Verification

	Readings			Targets			Results	
	Zero	Cal		Zero	Cal		m'	b'
Deep	0.000	0.000	mmho/m	135384.000	27094.500	mmho/m	1.000	0.000
Medium	0.000	0.000	mmho/m	-47330.100	-9381.740	mmho/m	1.000	0.000
LL3		0.000	Ohm-m		1400.000	Ohm-m		
		0.000	Ohm-m		20.000	Ohm-m		
		0.000	mmho-m		4000.000	mmho-m		

Litho Density Calibration Report
 Serial: 002 Model: PRB

	Background	Magnesium	Aluminum	Sandstone	
Window 1	819.4	6916.8	2053.5	6968.1	cps
Window 2	780.4	5708.6	1783.3	5727.0	cps
Window 3	656.9	3349.4	1194.5	3336.6	cps
Window 4	187.3	183.4	186.5	186.2	cps
Long Space	0.0	4928.2	1002.9	4946.6	cps
Short Space	1.2	1266.1	819.1	1290.7	cps
Rho		1.7100	2.5960	1.3800	g/cc
Pe		0.0000	2.5700	1.5500	
Rib Angle	: 44.7	Rib Slope	: 0.990	Density/Spine Ratio	: 0.537
Spine Angle	: 74.7	Spine Slope	: 3.655	Spine Intercept	: -17.6

Before Survey Verification		Performed Wed Dec 31 18:00:00 1969			
Window 1	0.0	0.0	0.0	0.0	cps
Window 2	0.0	0.0	0.0	0.0	cps
Window 3	0.0	0.0	0.0	0.0	cps
Window 4	0.0	0.0	0.0	0.0	cps
Long Space	0.0	0.0	0.0	0.0	cps
Short Space	0.0	0.0	0.0	0.0	cps
Measured Rho		0.0000	0.0000	0.0000	g/cc
Measured Correction		0.0000	0.0000	0.0000	g/cc
Measured Pe			0.0000	0.0000	

After Survey Verification		Performed Wed Dec 31 18:00:00 1969			
Window 1	0.0	0.0	0.0	0.0	cps
Window 2	0.0	0.0	0.0	0.0	cps
Window 3	0.0	0.0	0.0	0.0	cps
Window 4	0.0	0.0	0.0	0.0	cps
Long Space	0.0	0.0	0.0	0.0	cps
Short Space	0.0	0.0	0.0	0.0	cps
Measured Rho		0.0000	0.0000	0.0000	g/cc
Measured Correction		0.0000	0.0000	0.0000	g/cc
Measured Pe			0.0000	0.0000	

--	--	--	--	--	--

Compensated Neutron Calibration Report

Serial Number:	080620
Tool Model:	Probe

PRE-SURVEY VERIFICATION				
Detector	Readings	Measured	Target	
Short Space	cps			
Long Space	cps	pu	pu	

POST-SURVEY VERIFICATION				
Detector	Readings	Measured	Target	
Short Space	cps			
Long Space	cps	pu	pu	

Gamma Ray Calibration Report

Serial Number:	46001
Tool Model:	Probe1
Performed:	Sat Aug 02 01:58:53 2014

Performed: Sat Aug 02 01:00:52 2014

Calibrator Value:	1.0	GAPI
Background Reading:	0.0	cps
Calibrator Reading:	1.0	cps
Sensitivity:	0.2600	GAPI/cps