



**COMPLETION  
& PRODUCTION  
SERVICES CO.**

**MICRO  
LOG**

Company **BLUERIDGE PETROLEUM CORP.**  
Well **MAY #1-15**  
Field  
County **DECATUR** State **KANSAS**

Company **BLUERIDGE PETROLEUM CORP.**  
Well **MAY #1-15**  
Field  
County **DECATUR**  
State **KANSAS**

Location: **API # : 15-039-21207-00-00**  
**330' FSL & 710' FWL**  
**W/2 - SE - SW - SW**  
**SEC 15 TWP 2S RGE 30W**  
Permanent Datum **GROUND LEVEL** Elevation **2784**  
Log Measured From **KELLY BUSHING 9' A.G.L.**  
Drilling Measured From **KELLY BUSHING**

Other Services  
**CDL/CNL/PE**  
**DIL/SON**  
Elevation  
K.B. 2793  
D.F. 2791  
G.L. 2784

Date	9/12/14		
Run Number	TWO		
Depth Driller	4080		
Depth Logger	4081		
Bottom Logged Interval	4083		
Top Log Interval	3500		
Casing Driller	8 5/8 @ 310'		
Casing Logger	311'		
Bit Size	7.875		
Type Fluid in Hole	CHEMICAL MUD		
Density / Viscosity	9.0/67	CHLORIDES 2,000 PPM	
pH / Fluid Loss	9.0/6.4		
Source of Sample	FLOWLINE		
Rm @ Meas. Temp	2.10 @ 58F		
Rmf @ Meas. Temp	1.58 @ 58F		
Rmc @ Meas. Temp	2.52 @ 58F		
Source of Rmf / Rmc	MEASURED		
Rm @ BHT	1.04 @ 117F		
Time Circulation Stopped	2 HOURS		
Time Logger on Bottom			
Maximum Recorded Temperature	117F		
Equipment Number	3802		
Location	HAYS, KS.		
Recorded By	JEFF GRONEWEG		
Witnessed By	CLINT MUSGROVE		

<<< Fold Here >>>

All interpretations are opinions based on inferences from electrical or other measurements and we cannot and do not guarantee the accuracy or correctness of any interpretation, and we shall not, except in the case of gross or willful negligence on our part, be liable or responsible for any loss, costs, damages, or expenses incurred or sustained by anyone resulting from any interpretation made by any of our officers, agents or employees. These interpretations are also subject to our general terms and conditions set out in our current Price Schedule.

Comments

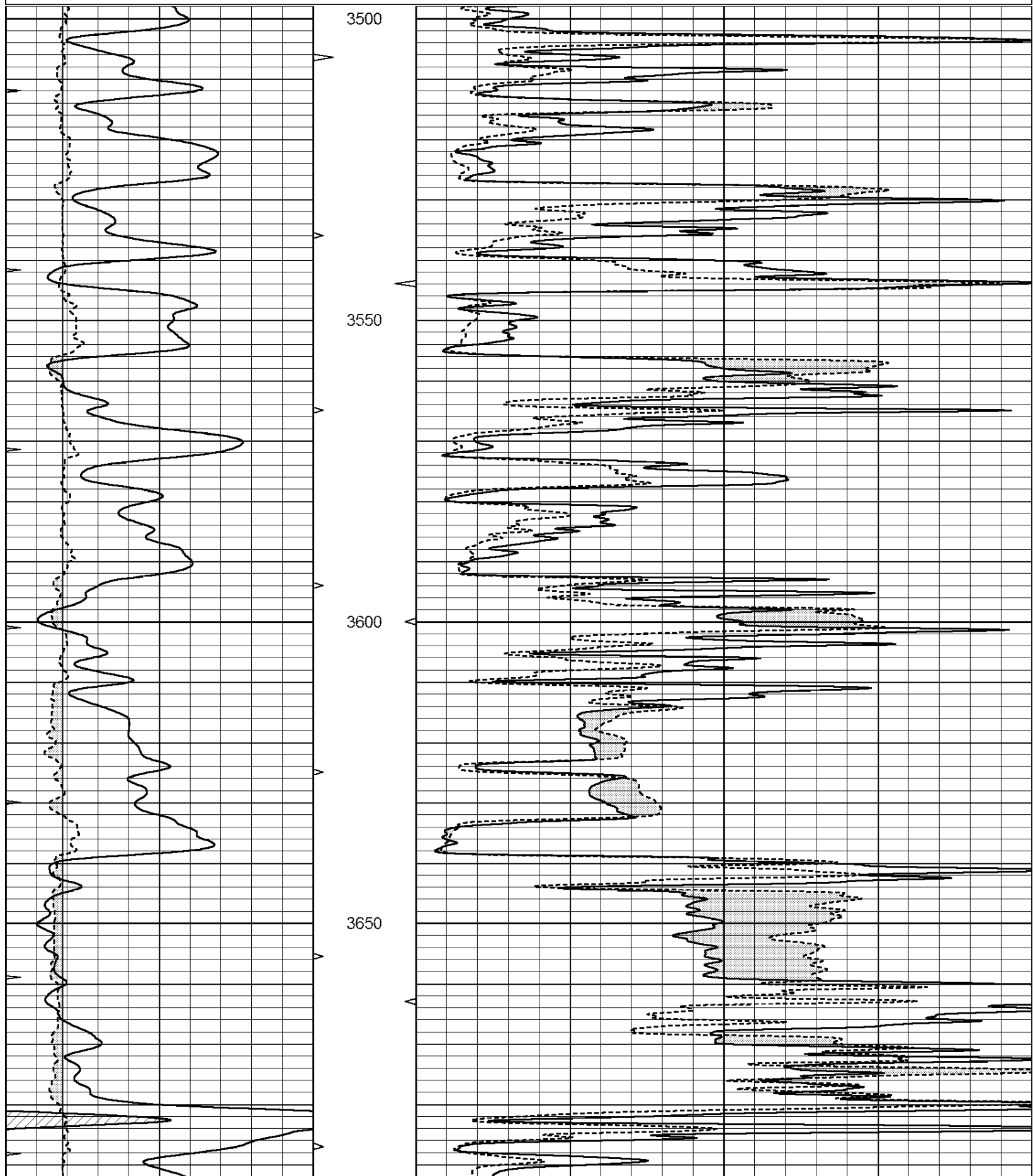
**NABORS COMPLETION & PRODUCTION SERVICES CO.**  
**785 ( 628 - 6395 )**  
**THANK YOU FOR YOUR BUSINESS**  
**DIRECTIONS : OBERLIN, KS - 7 MILES WEST - 1 MILE NORTH**  
**1/2 MILE WEST - 3 MILES NORTH - WEST INTO**

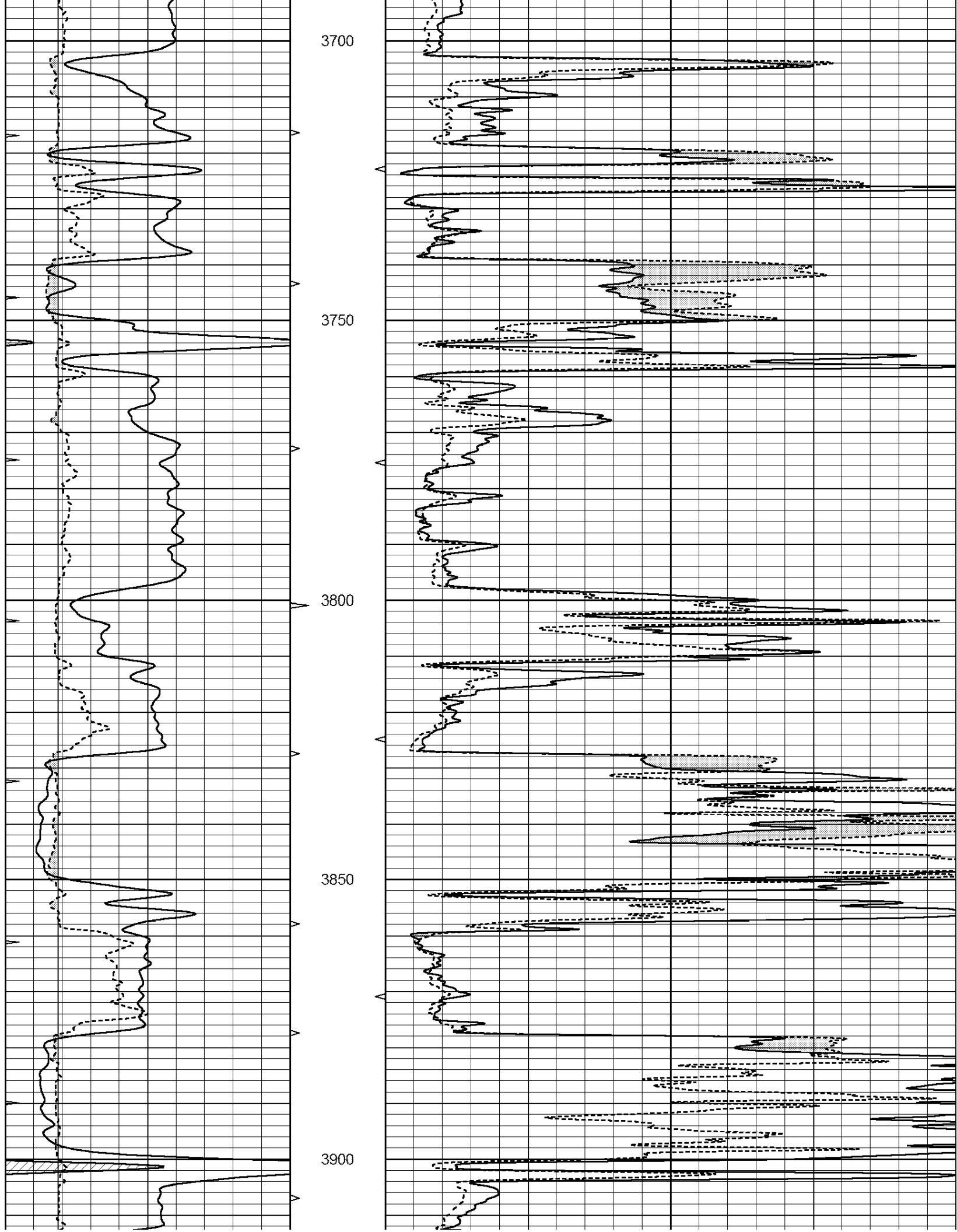
Charted by:

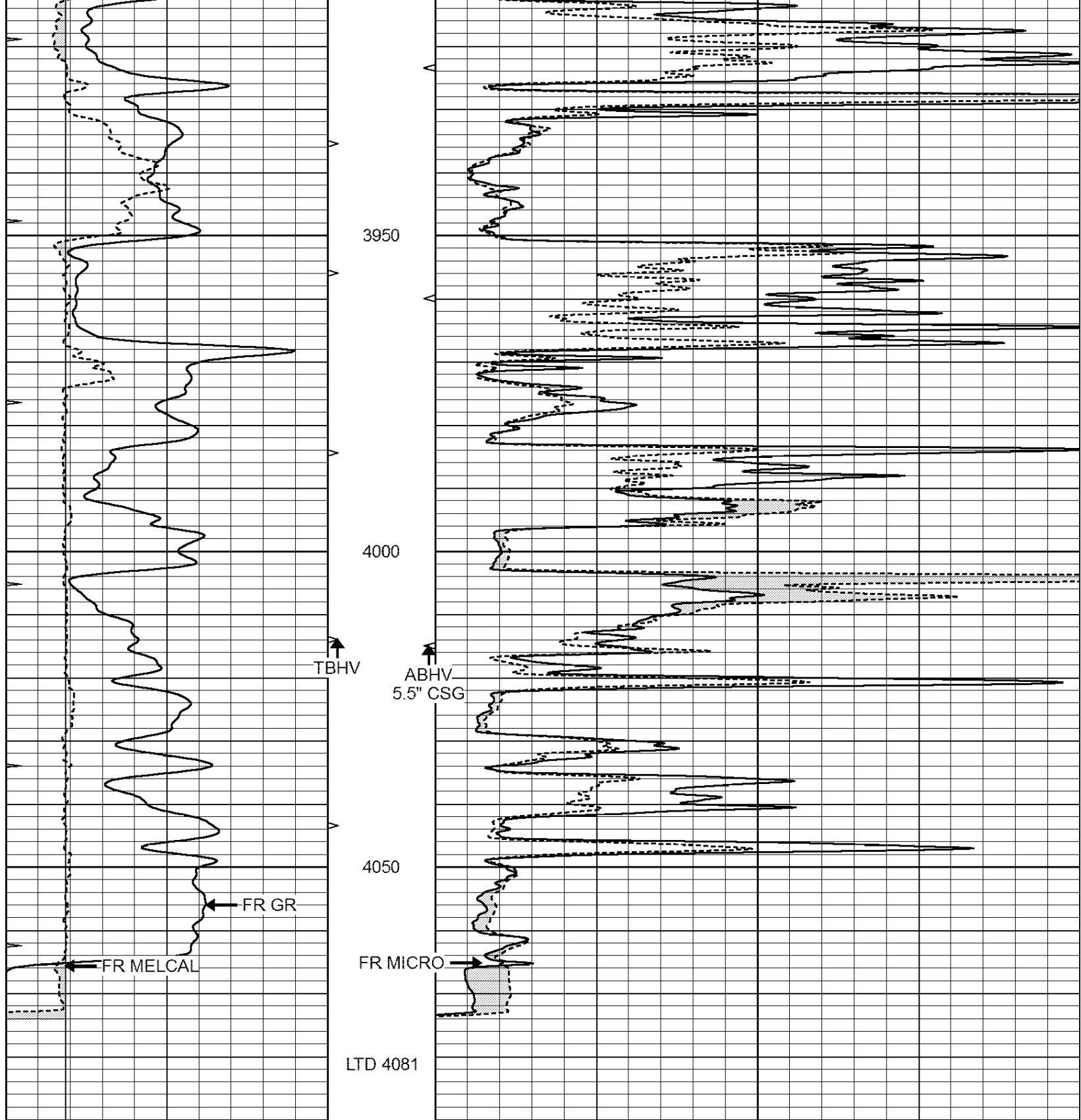
Depth in Feet scaled 1:240

0	GAMMA RAY (GAPI)	150
6	MELCAL (in)	16
0	MINMK	20

0	MEL1.5 (Ohm-m)	40
0	MEL2.0 (Ohm-m)	40







0	GAMMA RAY (GAPI)	150
6	MELCAL (in)	16
0	MINMK	20

0	MEL1.5 (Ohm-m)	40
0	MEL2.0 (Ohm-m)	40

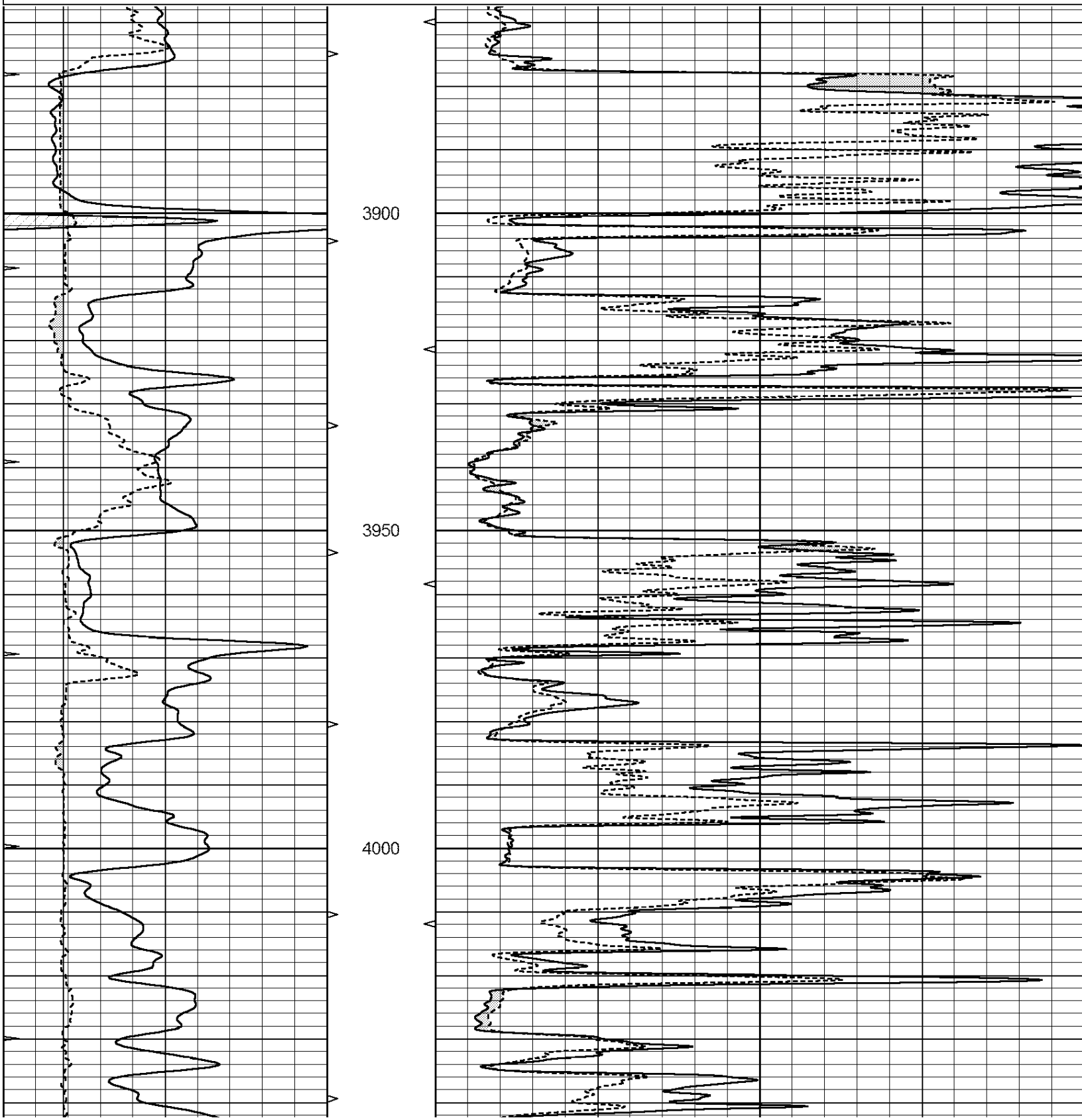


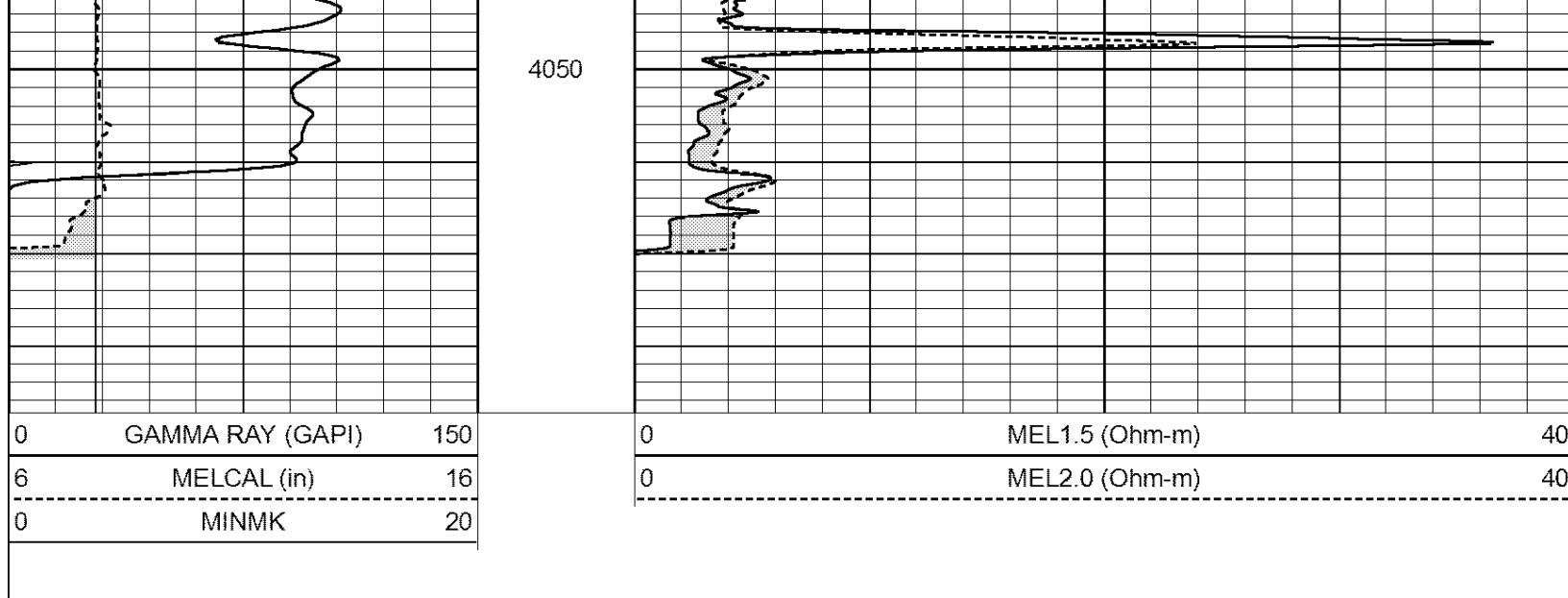
# REPEAT SECTION

Database File: 25815pe.db  
 Dataset Pathname: pass5.3  
 Presentation Format: \_micro  
 Dataset Creation: Fri Sep 12 10:50:38 2014 by Calc Open-Cased 090629  
 Charted by: Depth in Feet scaled 1:240

0	GAMMA RAY (GAPI)	150
6	MELCAL (in)	16
0	MINMK	20

0	MEL1.5 (Ohm-m)	40
0	MEL2.0 (Ohm-m)	40





### Calibration Report

Database File: 25815pe.db  
 Dataset Pathname: pass6.2  
 Dataset Creation: Fri Sep 12 10:47:11 2014 by Calc Open-Cased 090629

#### MICRO Calibration Report

Serial Number:	MICRO4	
Tool Model:	PROBE	
Performed:	Wed Aug 13 17:16:52 2014	
Caliper Calibration:	Gain=2.000	Offset=-4.200
References	Low Cal 8.600	High Cal 14.000
Readings	5.934	7.767
1.5" Calibration:	Gain=42.000	Offset=-2.600
References	Low Cal 0.000	High Cal 20.000
Readings	0.013	1.547
2" Calibration:	Gain=60.000	Offset=-1.600
References	Low Cal 0.000	High Cal 20.000
Readings	0.017	1.202

#### Gamma Ray Calibration Report

Serial Number:	GR2	
Tool Model:	OPEN	
Performed:	Sat Aug 02 03:42:50 2014	
Calibrator Value:	200.0	GAPI
Background Reading:	0.0	cps
Calibrator Reading:	740.0	cps
Sensitivity:	0.3200	GAPI/cps