



**COMPLETION
& PRODUCTION
SERVICES CO.**

**DUAL
INDUCTION
LOG**

Company BLUERIDGE PETROLEUM CORP.
Well MAY #1-15
Field
County DECATUR State KANSAS

Company BLUERIDGE PETROLEUM CORP.
Well MAY #1-15
Field
County DECATUR
State KANSAS

Location: API #: 15-039-21207-00-00
330' FSL & 710' FWL
W/2 - SE - SW - SW
SEC 15 TWP 2S RGE 30W
Permanent Datum GROUND LEVEL Elevation 2784
Log Measured From KELLY BUSHING 9' A.G.L.
Drilling Measured From KELLY BUSHING
Other Services
CDL/CNL/PE
SON/MEL
Elevation
K.B. 2793
D.F. 2791
G.L. 2784

Date	9/12/14		
Run Number	ONE		
Depth Driller	4080		
Depth Logger	4081		
Bottom Logged Interval	4079		
Top Log Interval	0		
Casing Driller	8 5/8 @ 310'		
Casing Logger	311'		
Bit Size	7.875		
Type Fluid in Hole	CHEMICAL MUD		
Density / Viscosity	9.0/67	CHLORIDES 2,000 PPM	
pH / Fluid Loss	9.0/6.4		
Source of Sample	FLOWLINE		
Rm @ Meas. Temp	2.10 @ 58F		
Rmf @ Meas. Temp	1.58 @ 58F		
Rmc @ Meas. Temp	2.52 @ 58F		
Source of Rmf / Rmc	MEASURED		
Rm @ BHT	1.04 @ 117F		
Time Circulation Stopped	2 HOURS		
Time Logger on Bottom			
Maximum Recorded Temperature	117F		
Equipment Number	3802		
Location	HAYS, KS.		
Recorded By	JEFF GRONEWEG		
Witnessed By	CLINT MUSGROVE		

<<< Fold Here >>>

All interpretations are opinions based on inferences from electrical or other measurements and we cannot and do not guarantee the accuracy or correctness of any interpretation, and we shall not, except in the case of gross or willful negligence on our part, be liable or responsible for any loss, costs, damages, or expenses incurred or sustained by anyone resulting from any interpretation made by any of our officers, agents or employees. These interpretations are also subject to our general terms and conditions set out in our current Price Schedule.

Comments

NABORS COMPLETION & PRODUCTION SERVICES CO.
785 (628 - 6395)
THANK YOU FOR YOUR BUSINESS
DIRECTIONS : OBERLIN, KS - 7 MILES WEST - 1 MILE NORTH
1/2 MILE WEST - 3 MILES NORTH - WEST INTO

Database File: 25815pe.db
Dataset Pathname: pass3.4
Presentation Format: _dii2
Dataset Creation: Fri Sep 12 09:34:37 2014

0 Gamma Ray (GAPI) 150

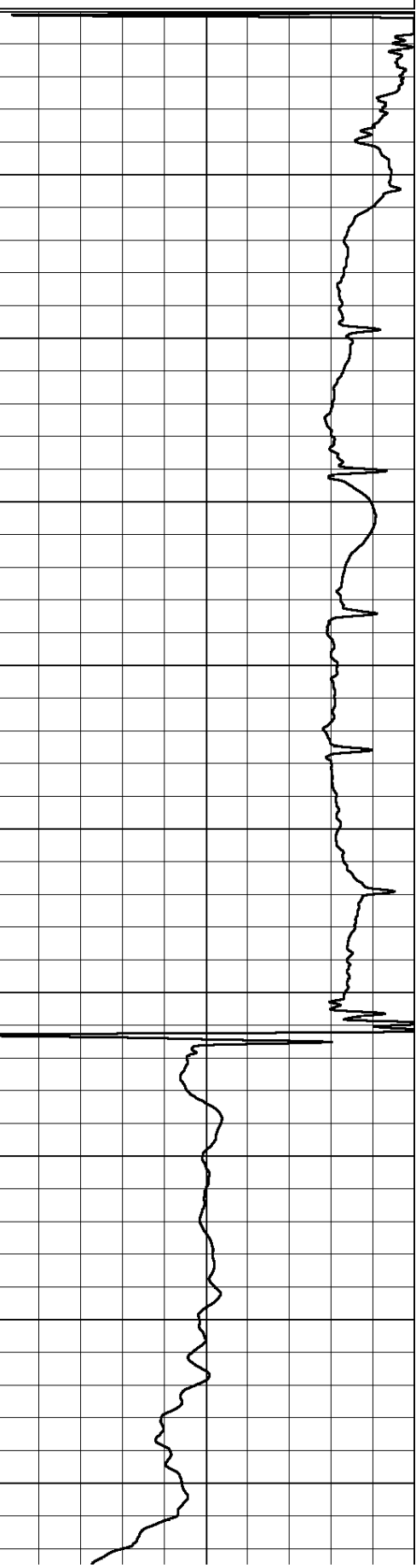
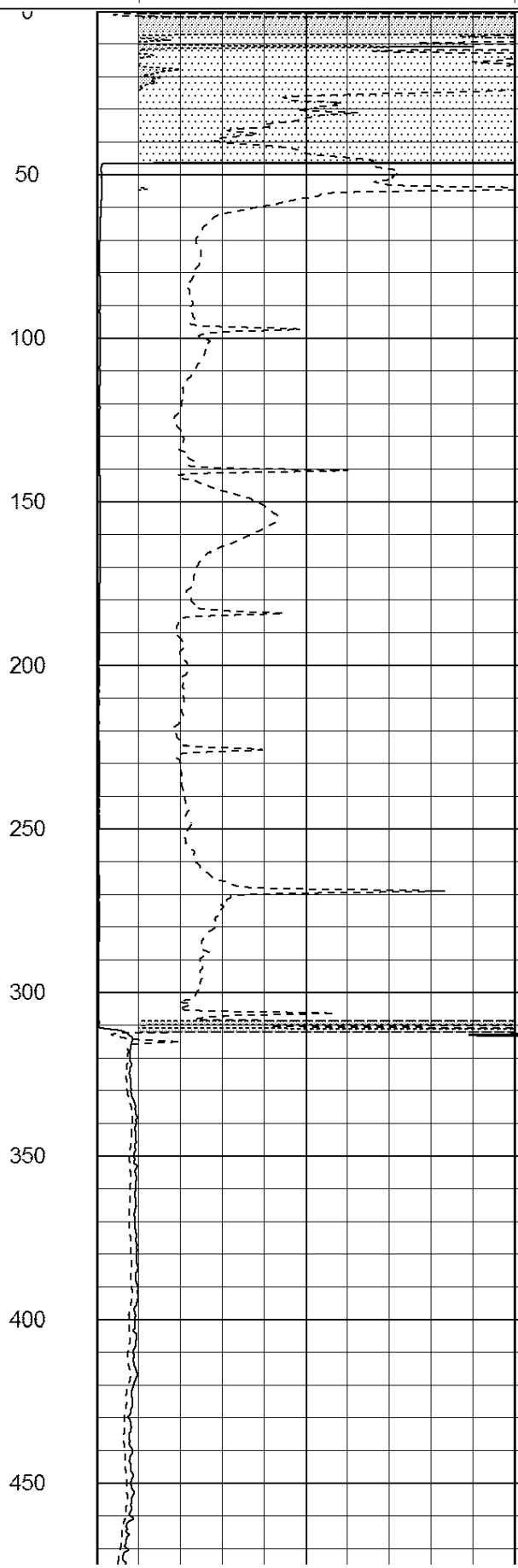
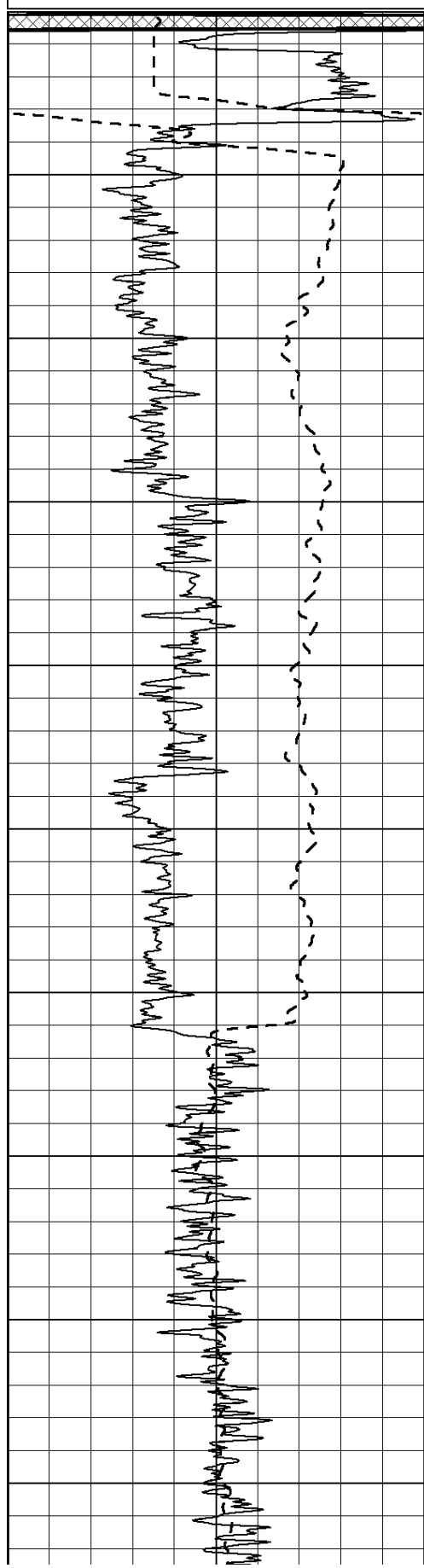
0 RLL3 (Ohm-m) 50

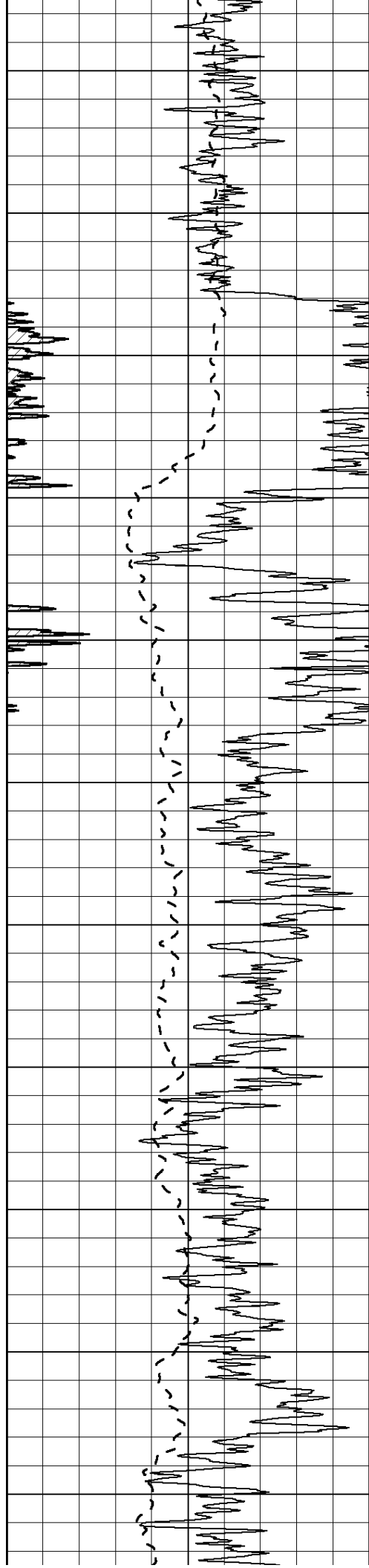
0 Deep Induction (Ohm-m) 50

1000 CILD (mmho/m) 0

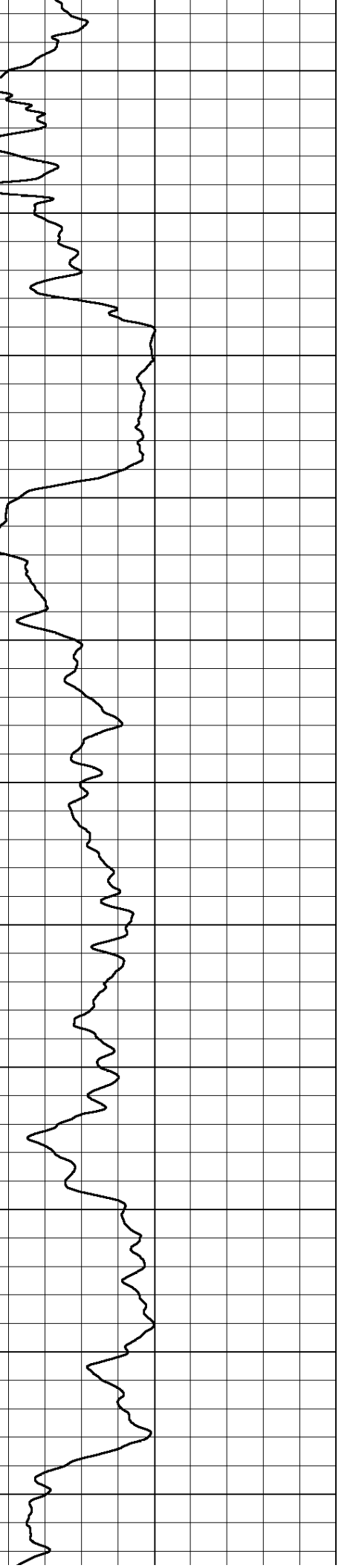
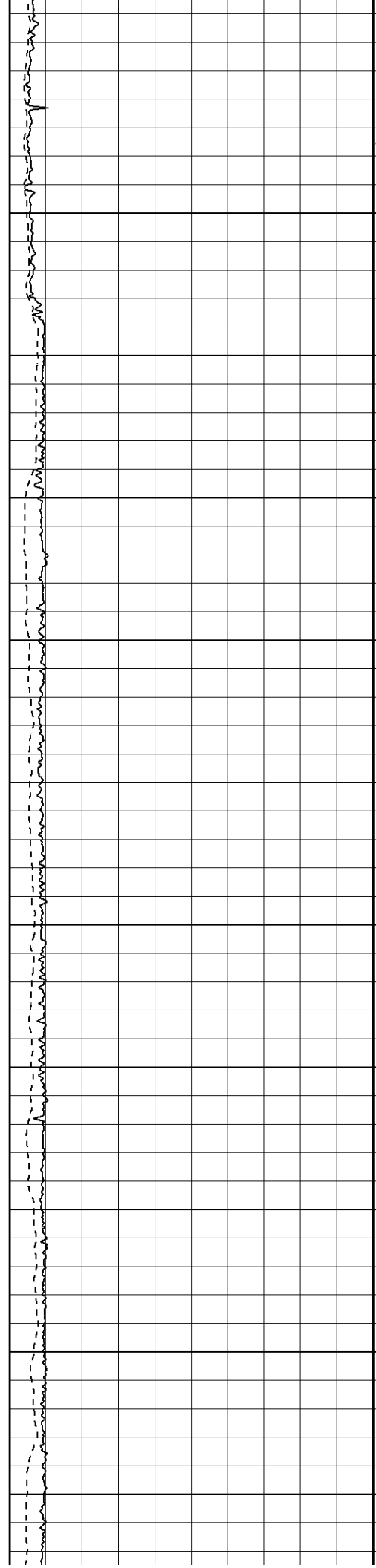
50 RILD X10 (Ohm-m) 500

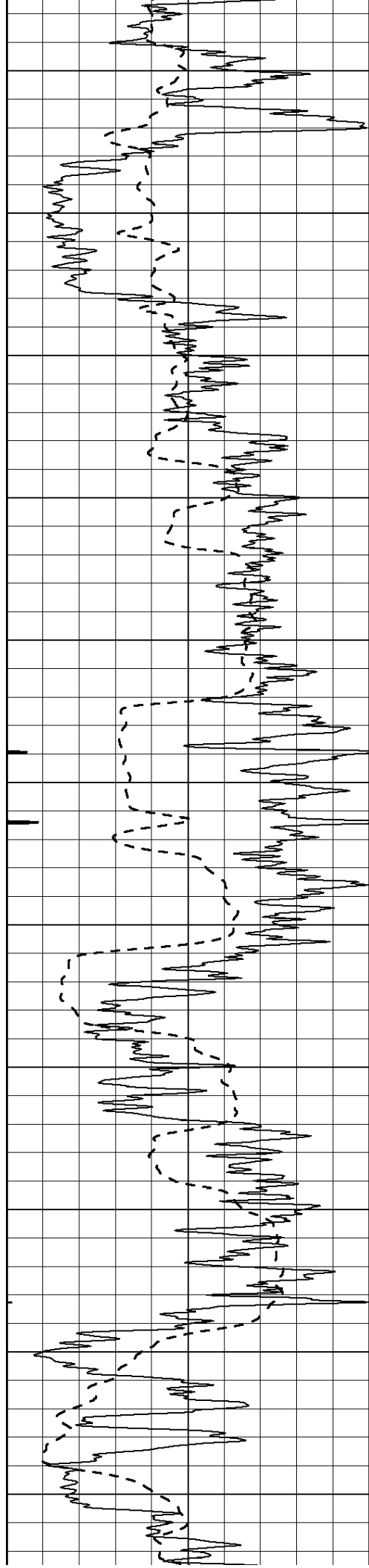
50 RLL3 X10 (Ohm-m) 500



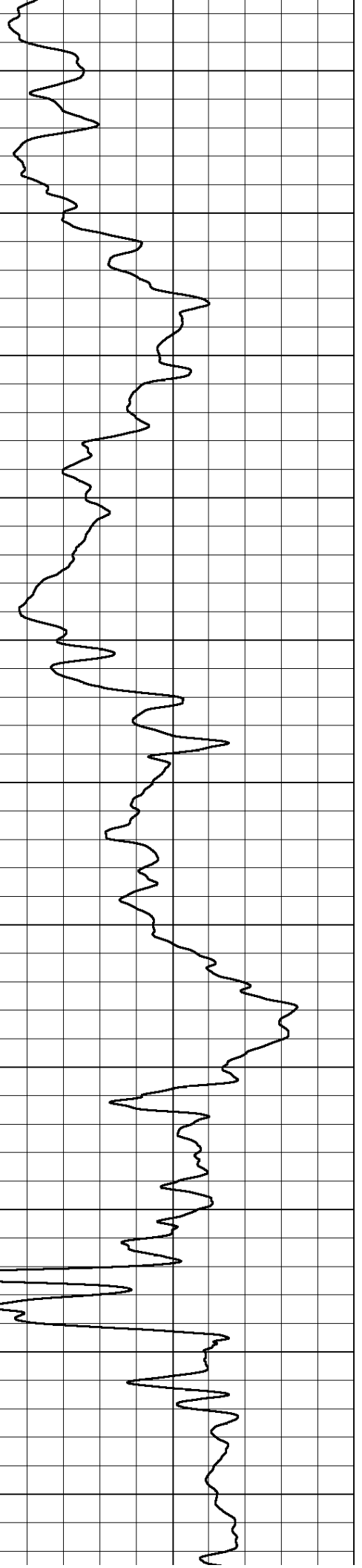
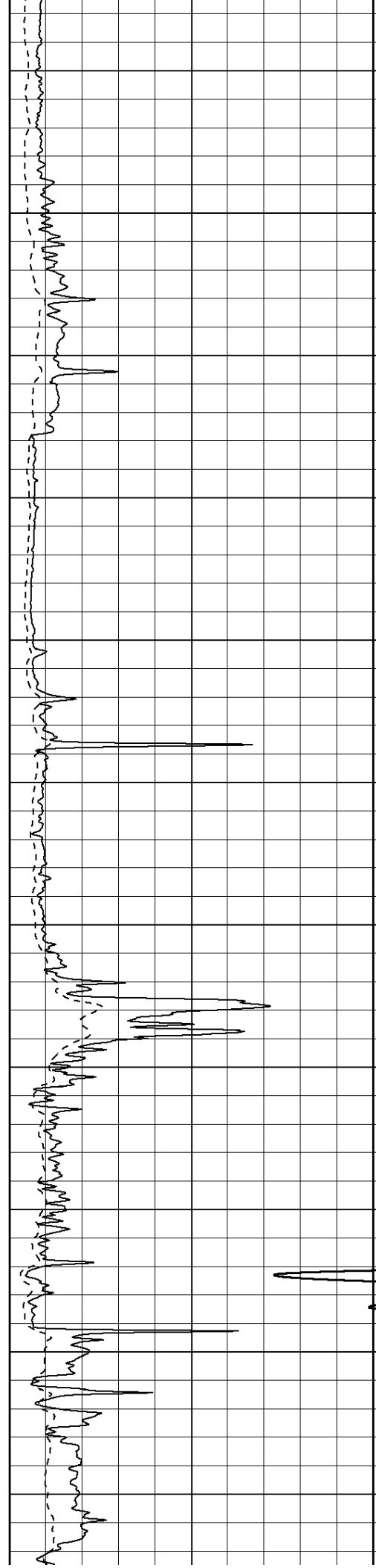


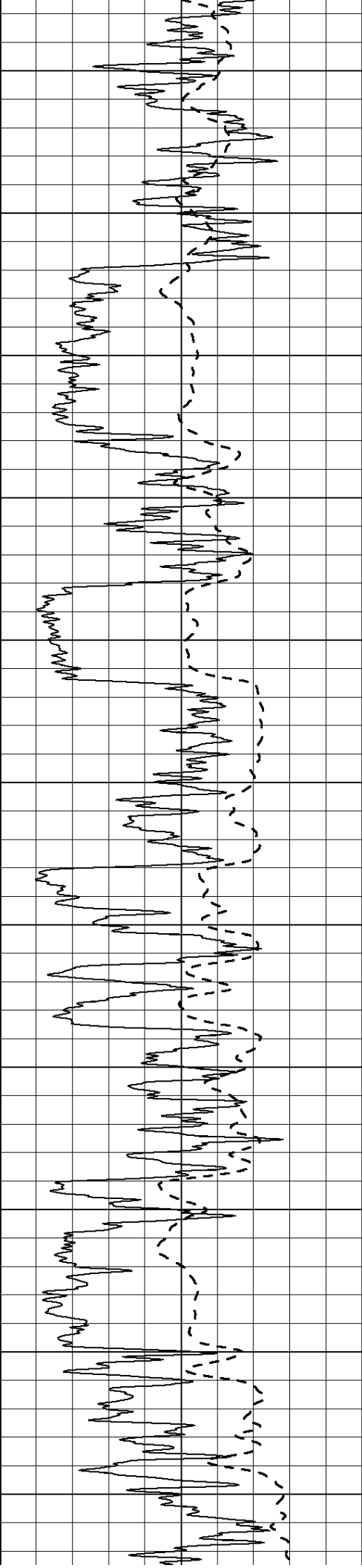
500
550
600
650
700
750
800
850
900
950
1000



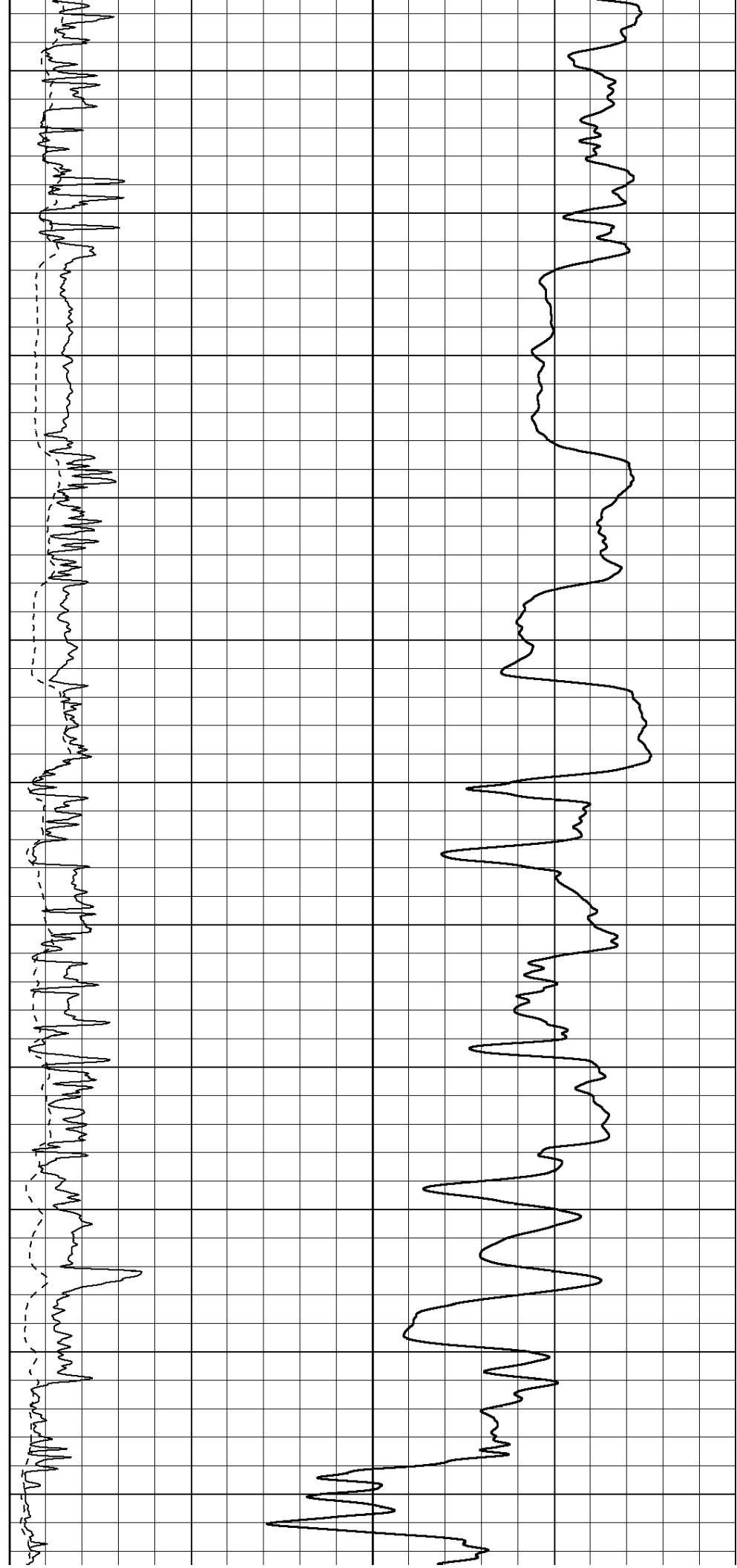


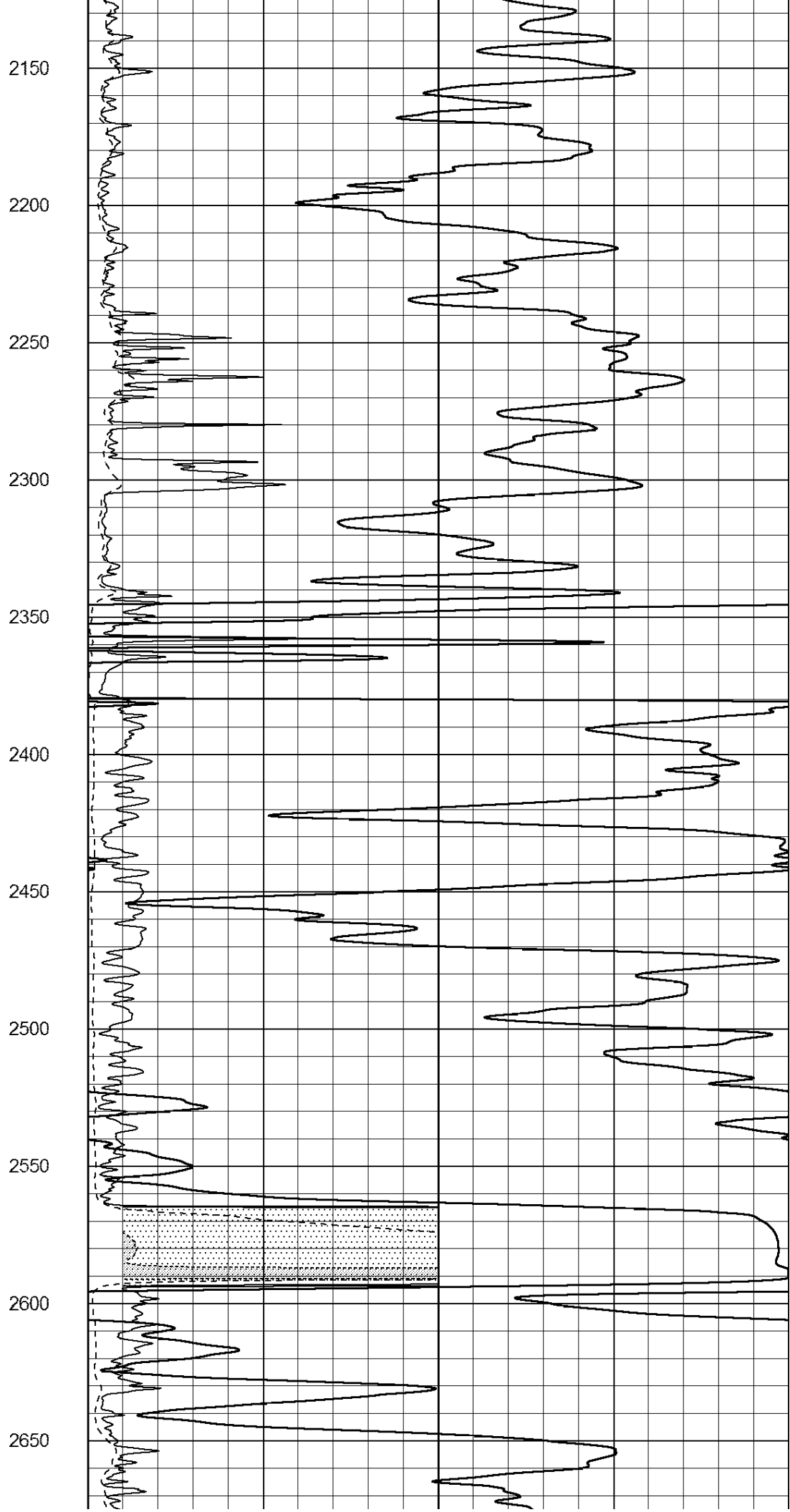
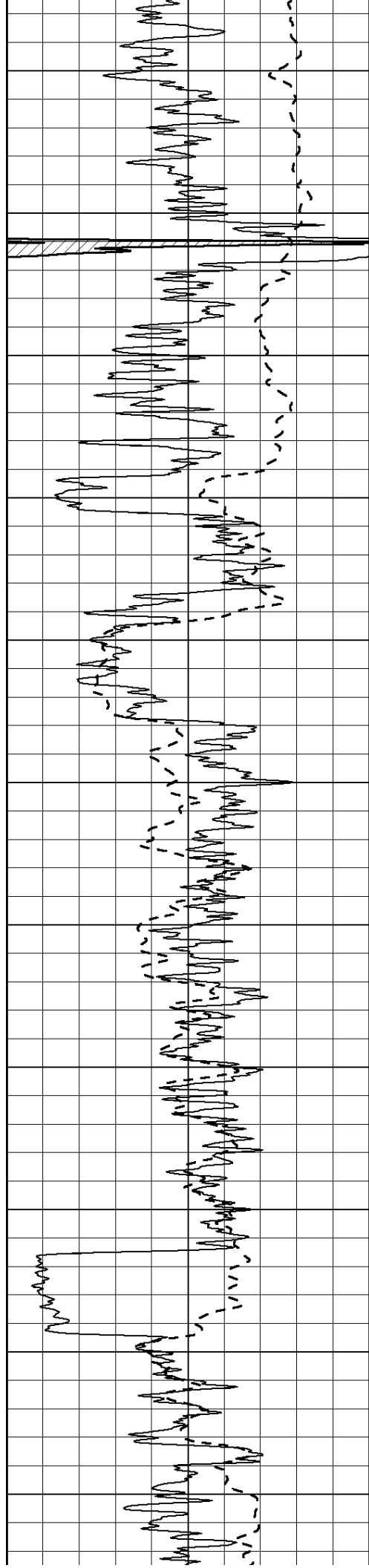
1050
1100
1150
1200
1250
1300
1350
1400
1450
1500
1550

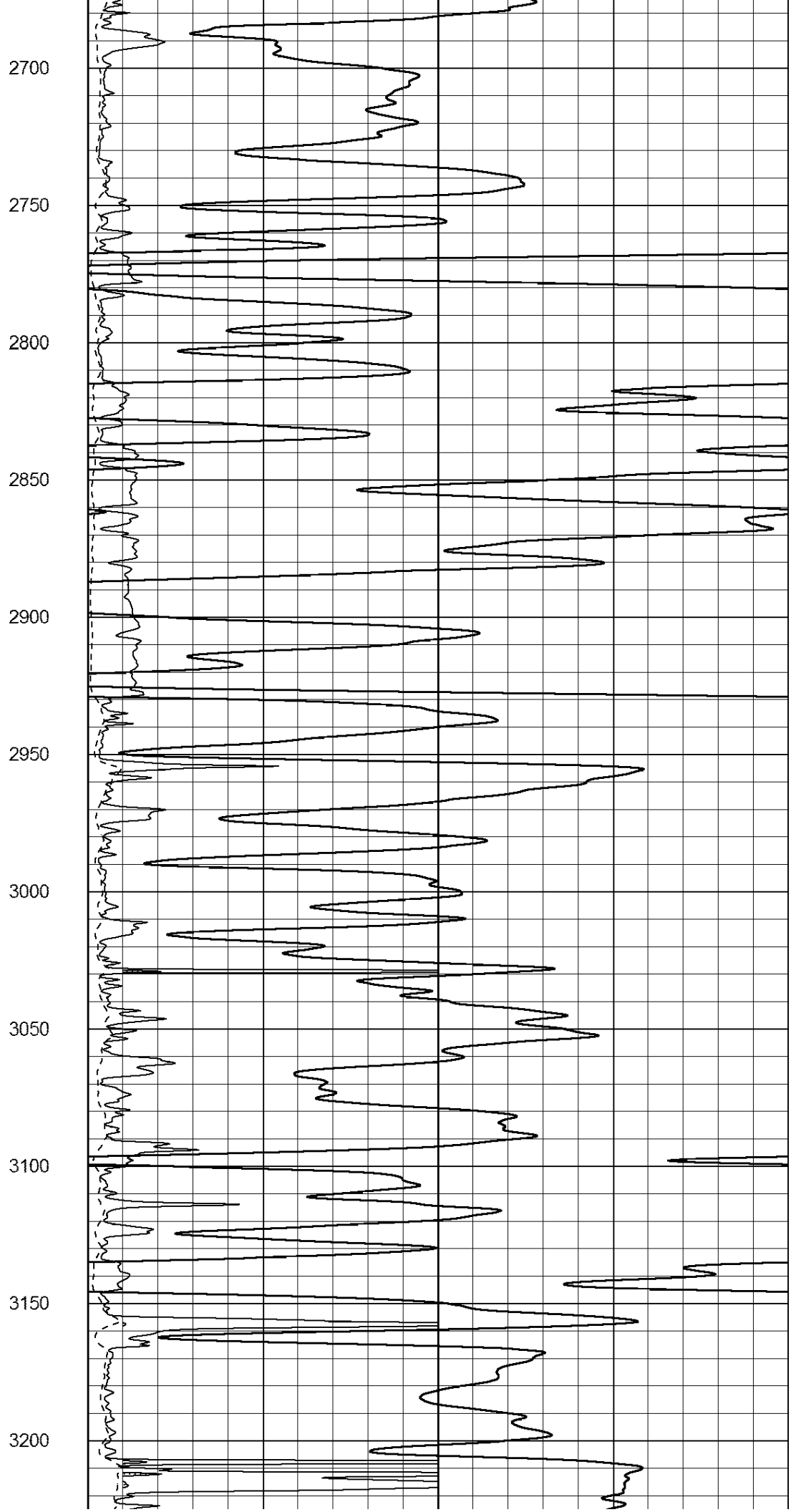
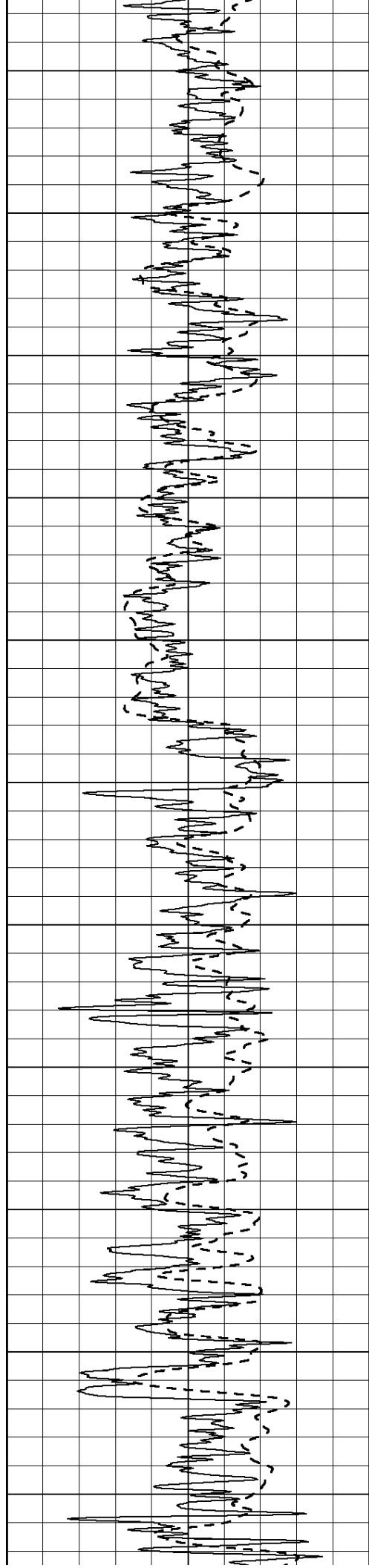


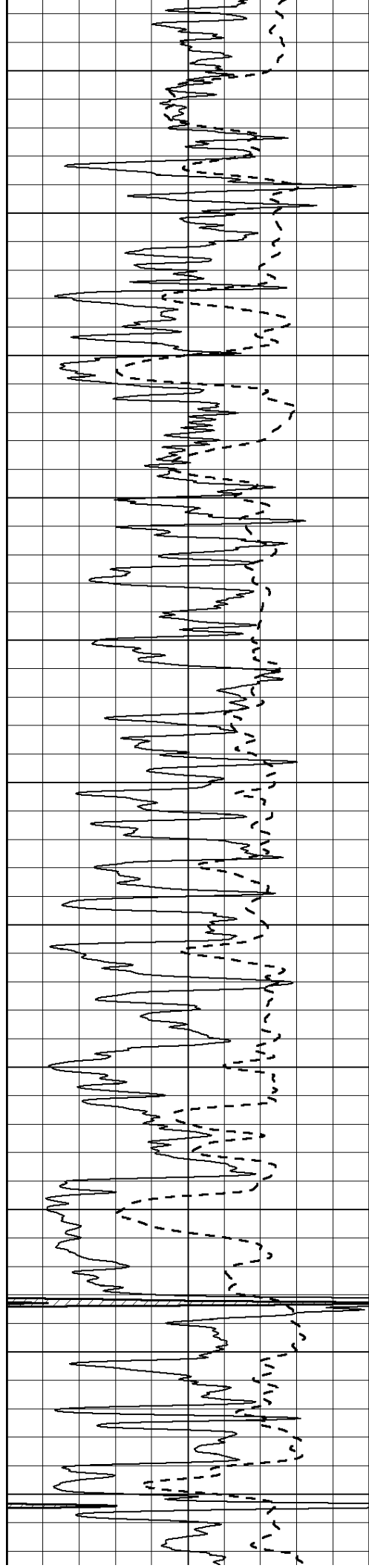


1600
1650
1700
1750
1800
1850
1900
1950
2000
2050
2100

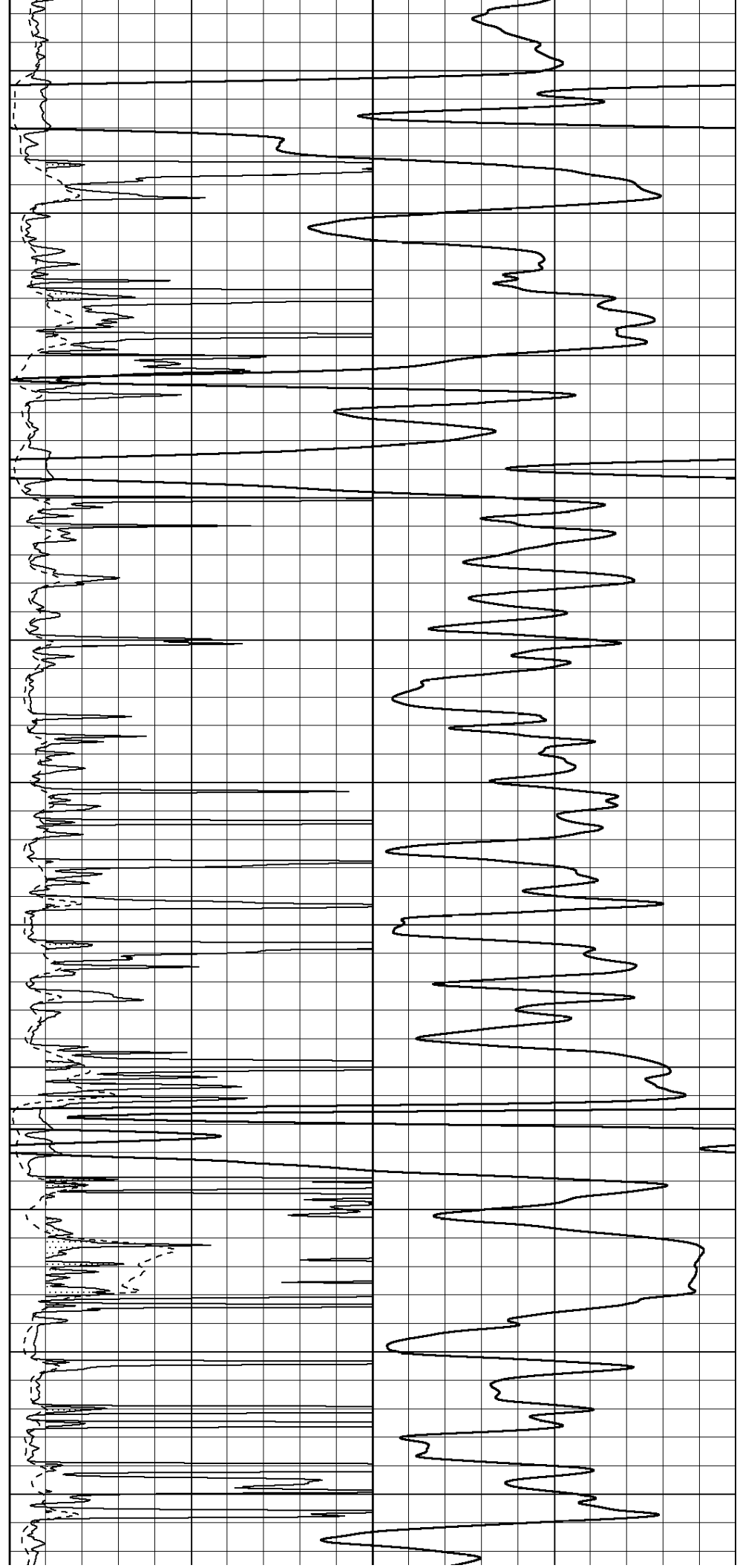


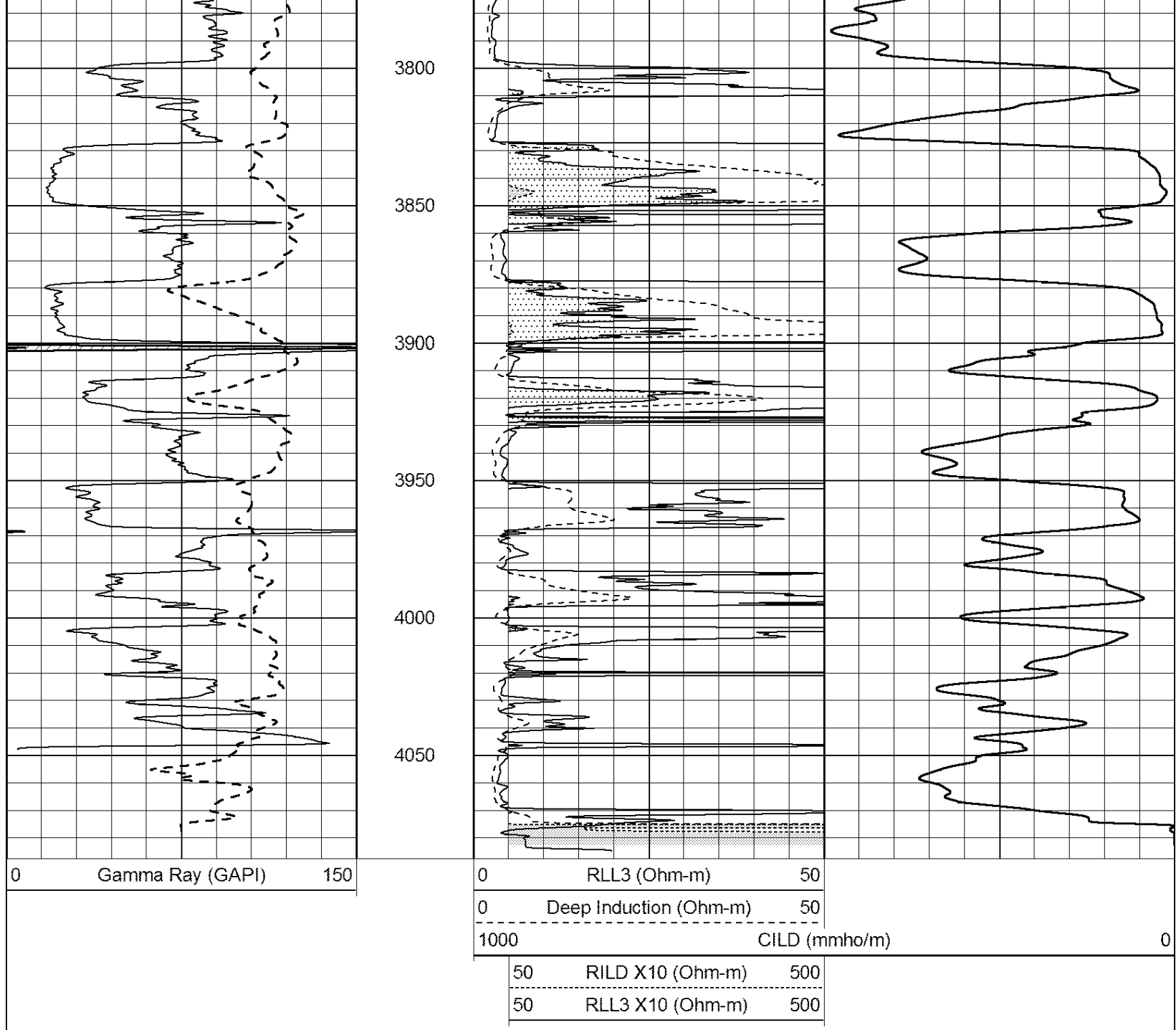






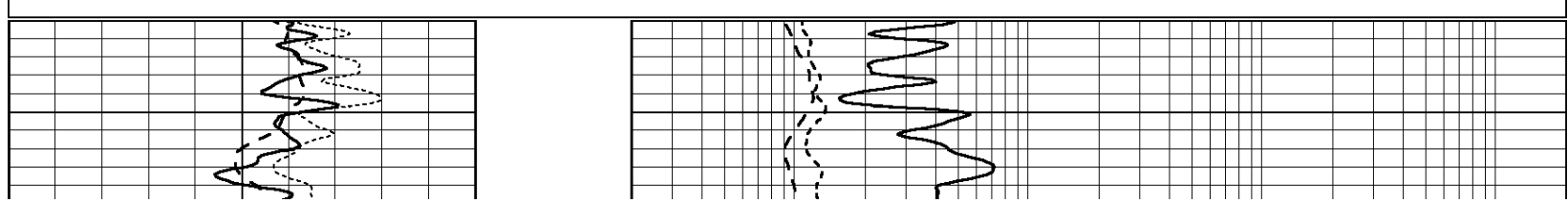
3250
3300
3350
3400
3450
3500
3550
3600
3650
3700
3750

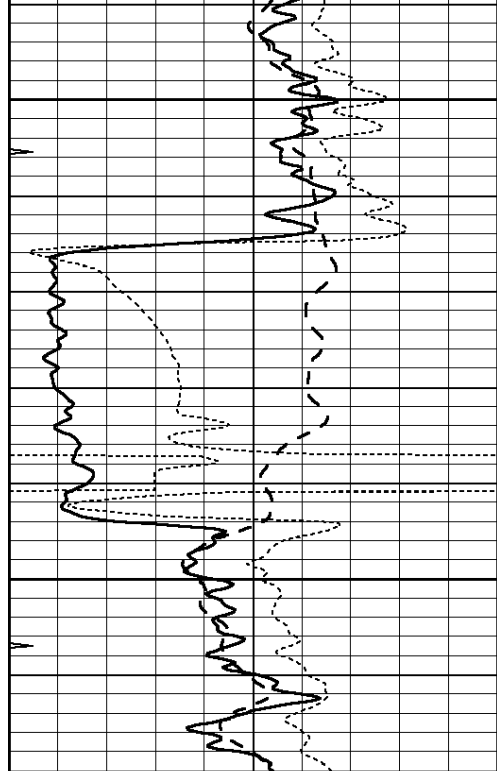




Database File: 25815pe.db
 Dataset Pathname: pass3.4
 Presentation Format: _dil
 Dataset Creation: Fri Sep 12 09:34:37 2014
 Charted by: Depth in Feet scaled 1:240

0	GAMMA RAY (GAPI)	150	0.2	RLL3 (Ohm-m)	2000
-100	SP (mV)	100	0.2	DEEP INDUCTION (Ohm-m)	2000
-250	RxoRt	50	0.2	MEDIUM INDUCTION (Ohm-m)	2000
0	MINMK	20			

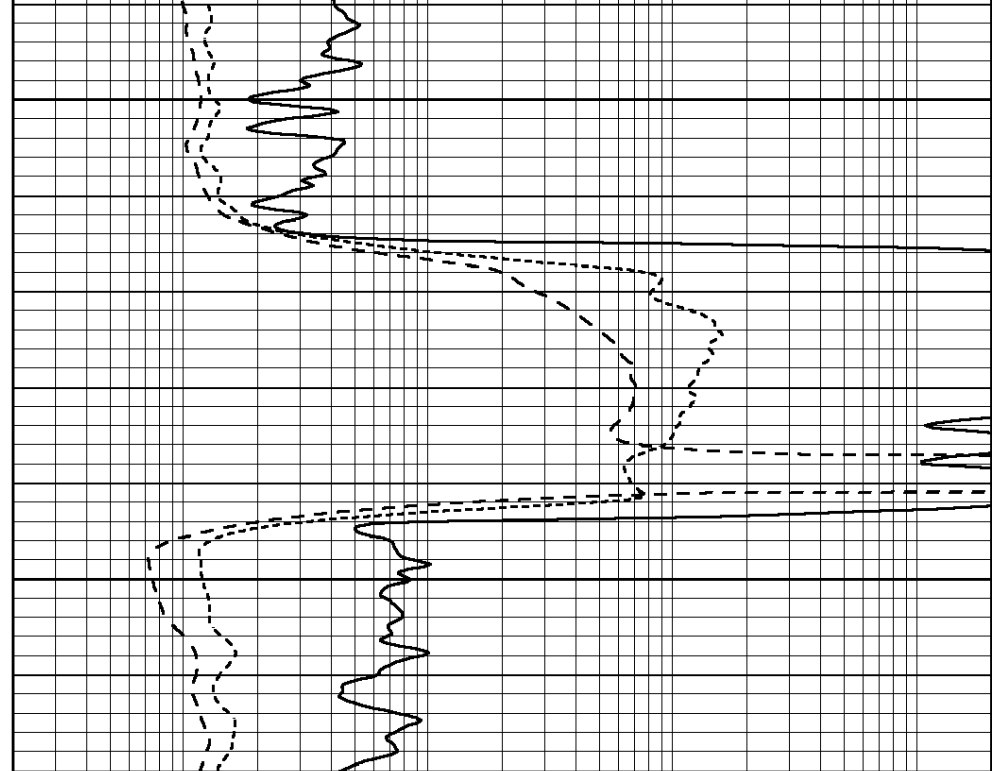




2550

2600

0	GAMMA RAY (GAPI)	150
-100	SP (mV)	100
-250	RxoRt	50
0	MINMK	20

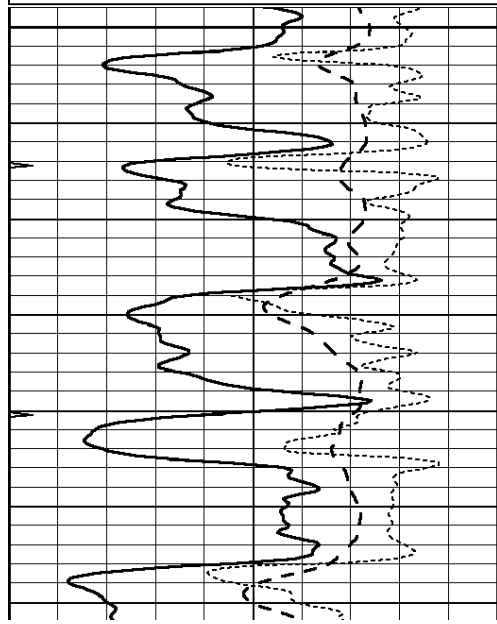


0.2	RLL3 (Ohm-m)	2000
0.2	DEEP INDUCTION (Ohm-m)	2000
0.2	MEDIUM INDUCTION (Ohm-m)	2000

Database File: 25815pe.db
 Dataset Pathname: pass3.4
 Presentation Format: _dil
 Dataset Creation: Fri Sep 12 09:34:37 2014
 Charted by: Depth in Feet scaled 1:240

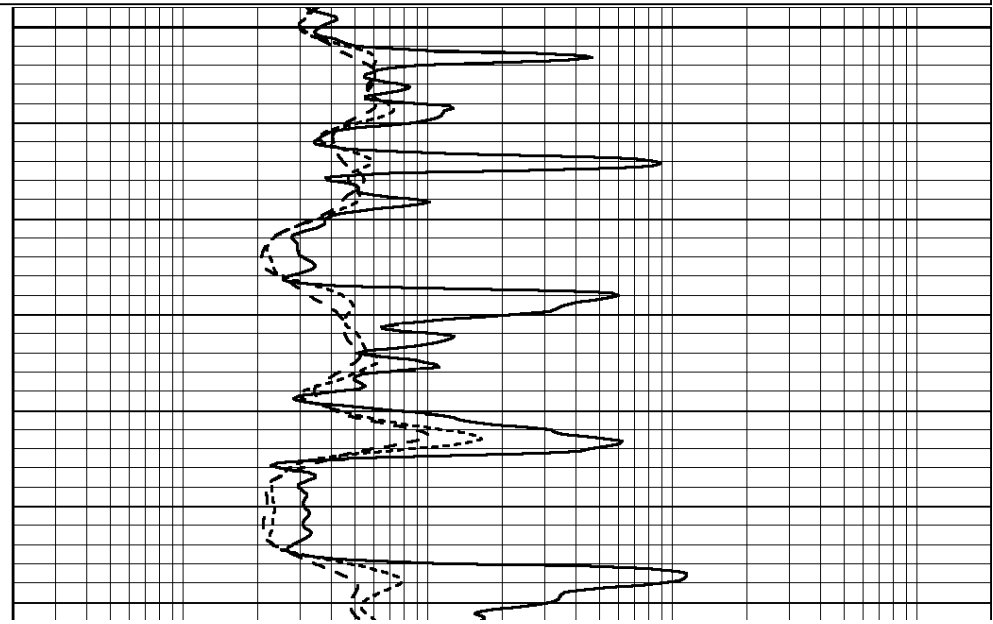
0	GAMMA RAY (GAPI)	150
-100	SP (mV)	100
-250	RxoRt	50
0	MINMK	20

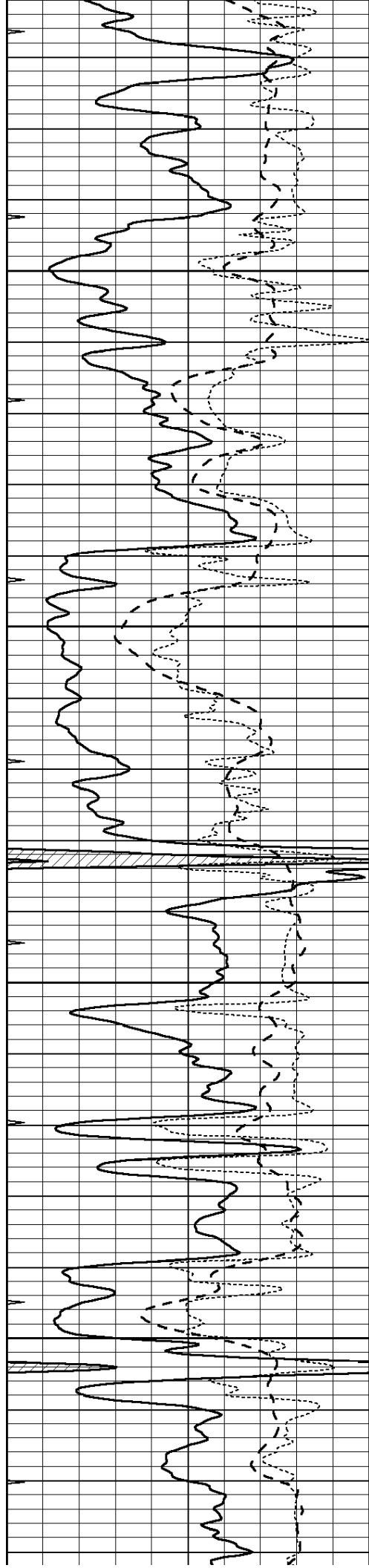
0.2	RLL3 (Ohm-m)	2000
0.2	DEEP INDUCTION (Ohm-m)	2000
0.2	MEDIUM INDUCTION (Ohm-m)	2000



3500

3550



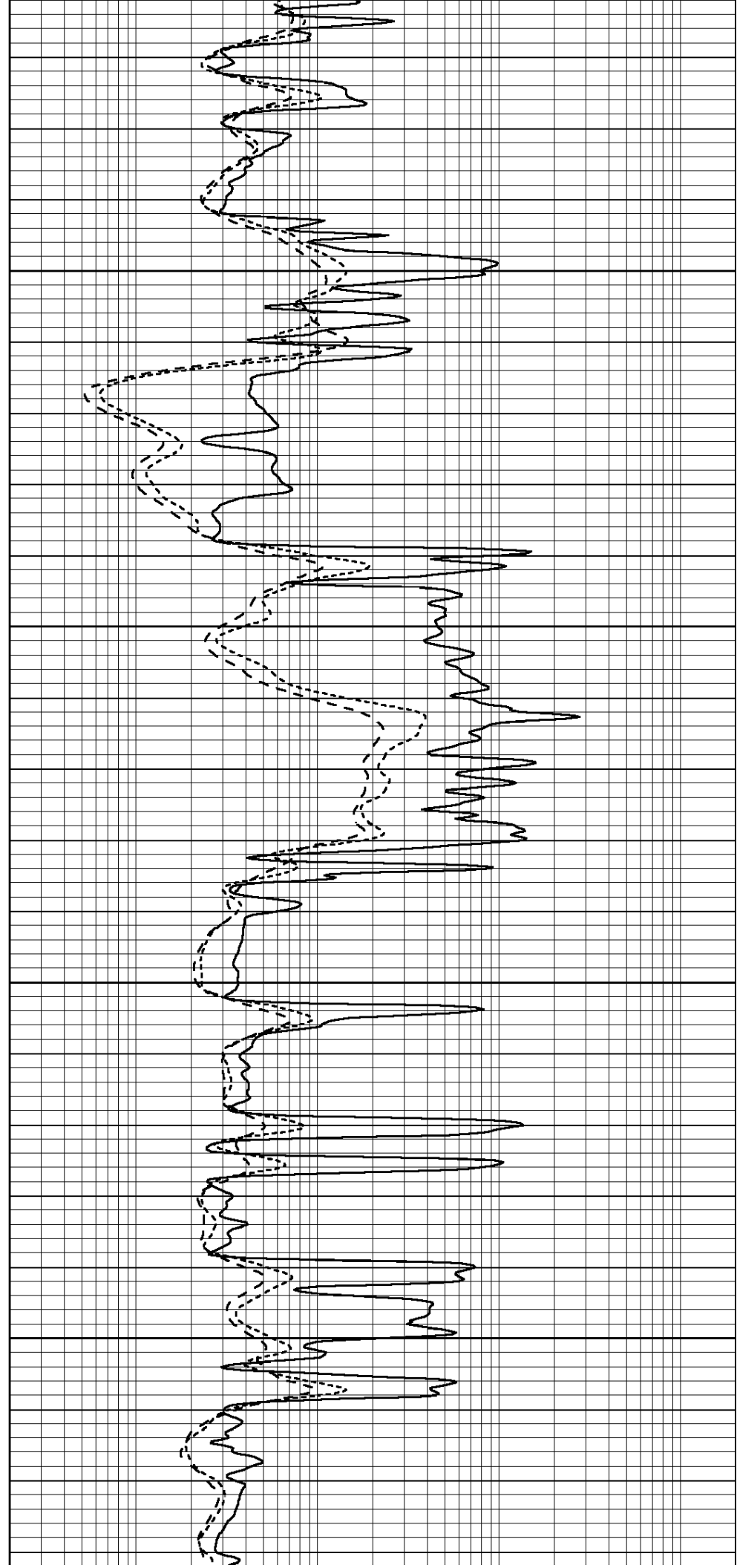


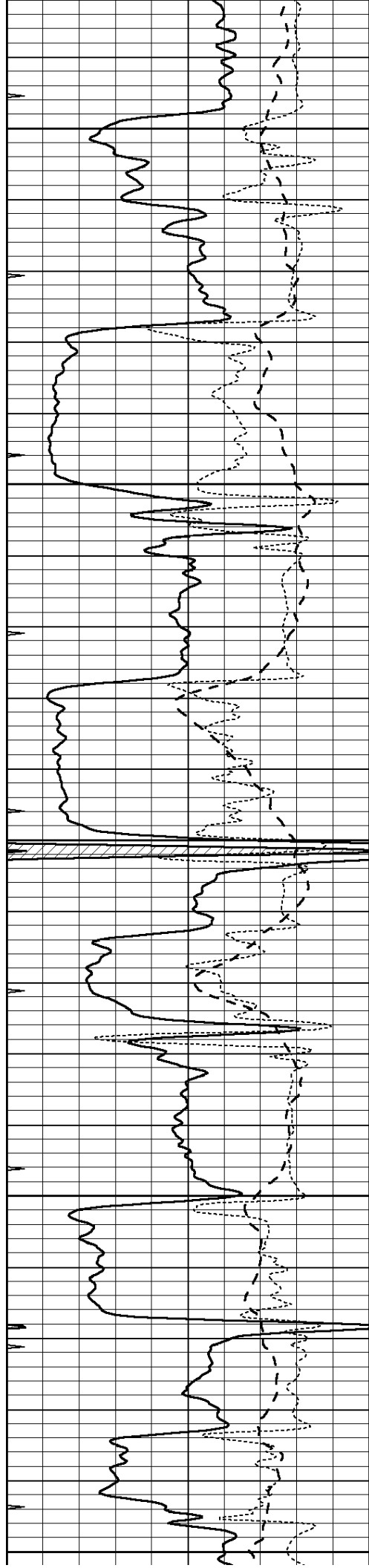
3600

3650

3700

3750





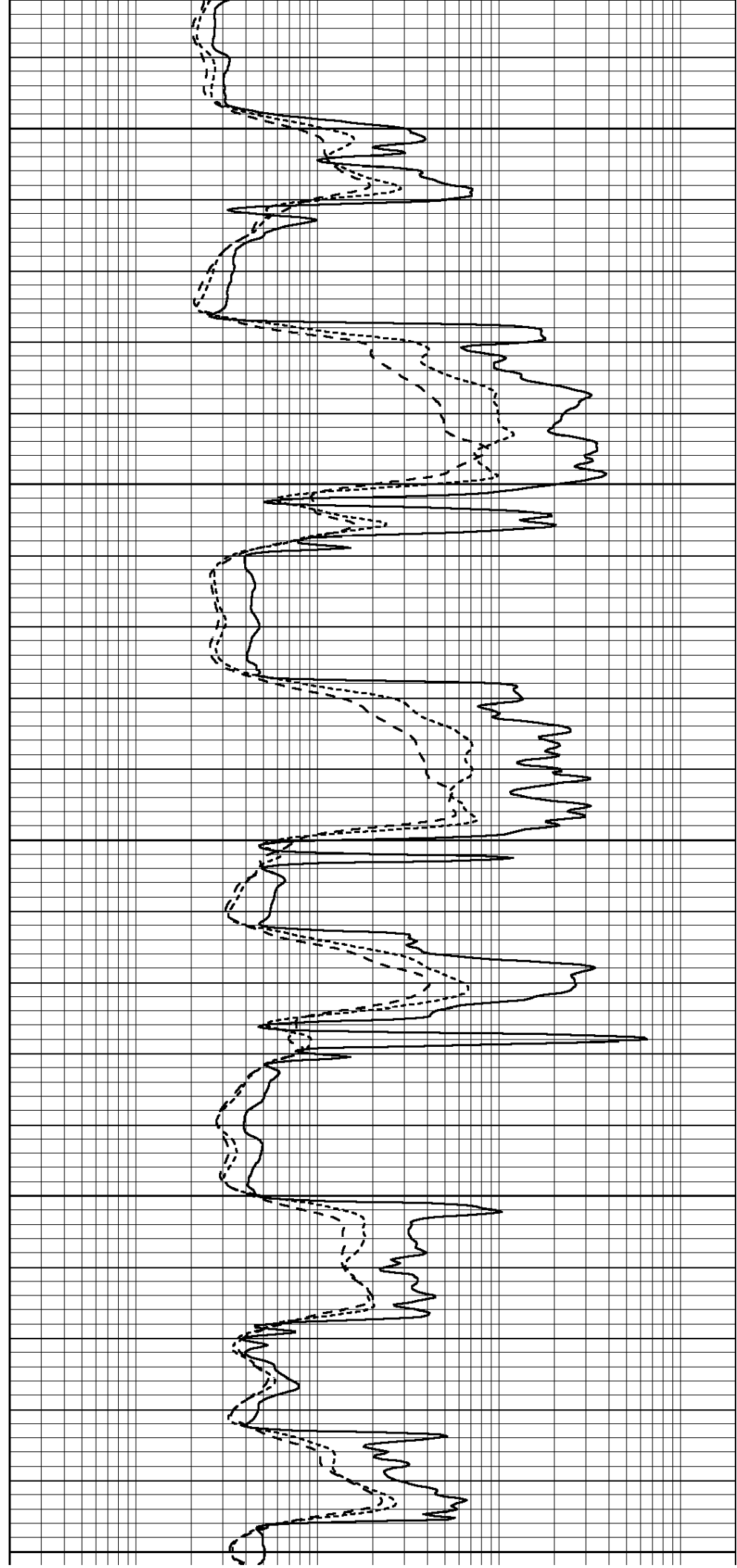
3800

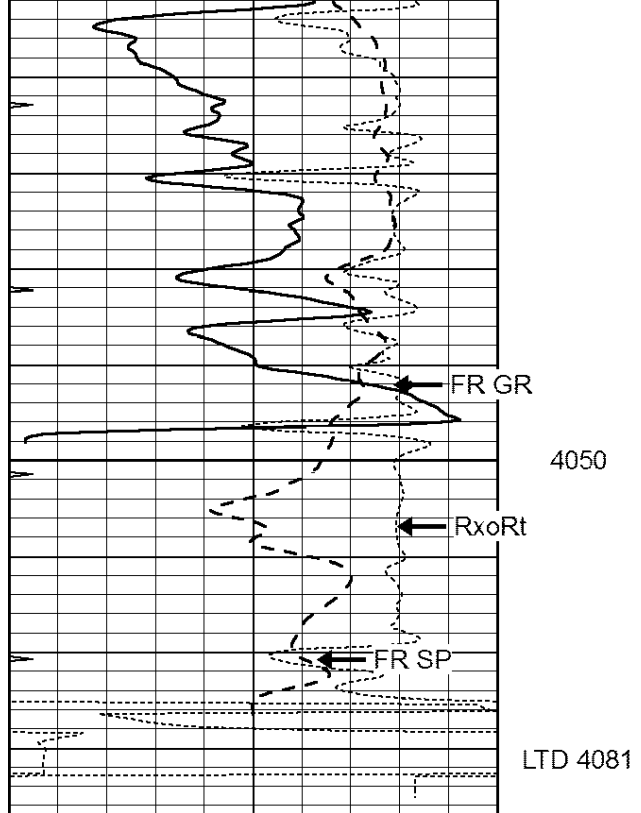
3850

3900

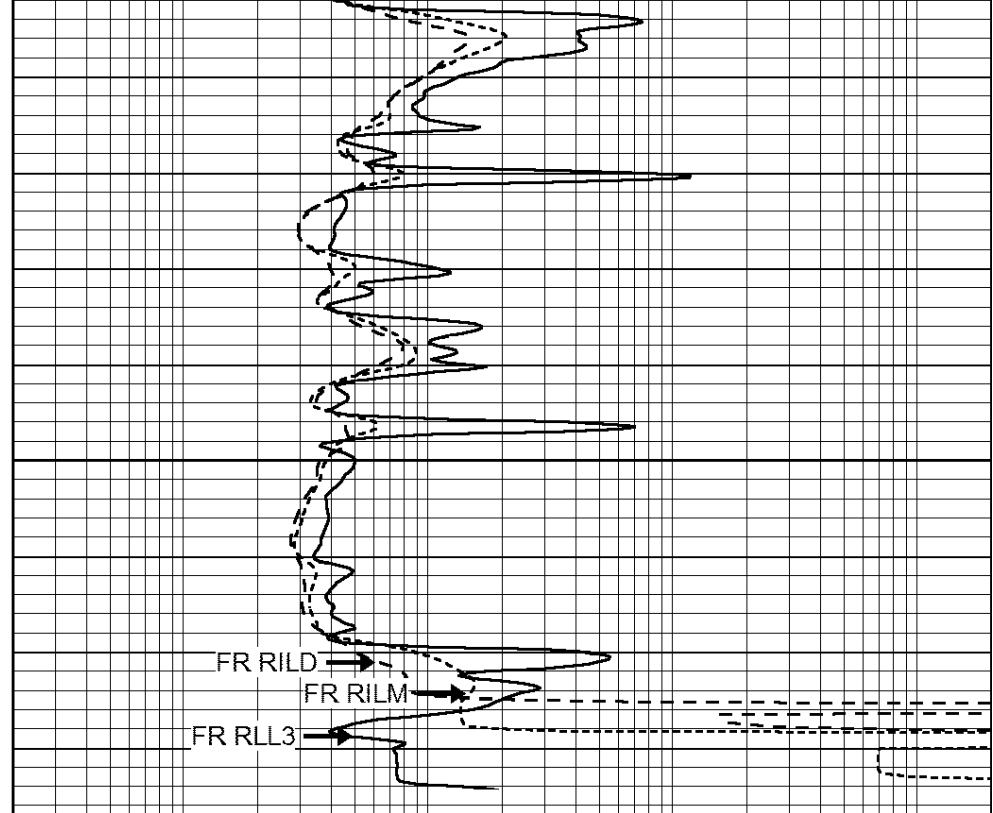
3950

4000





0	GAMMA RAY (GAPI)	150
-100	SP (mV)	100
-250	RxoRt	50
0	MINMK	20



0.2	RLL3 (Ohm-m)	2000
0.2	DEEP INDUCTION (Ohm-m)	2000
0.2	MEDIUM INDUCTION (Ohm-m)	2000

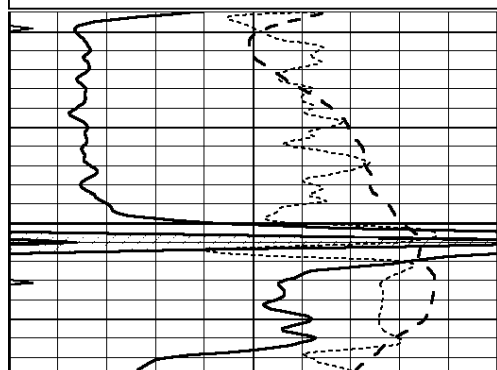


REPEAT SECTION

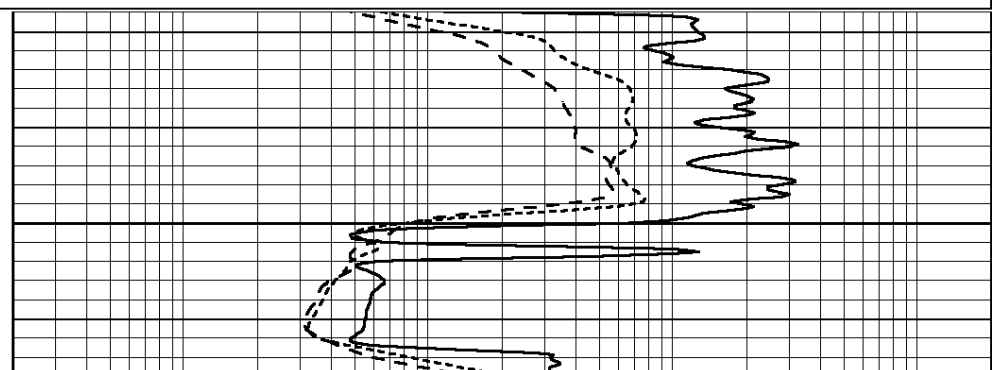
Database File: 25815pe.db
 Dataset Pathname: pass2.5
 Presentation Format: _dil
 Dataset Creation: Fri Sep 12 09:02:38 2014
 Charted by: Depth in Feet scaled 1:240

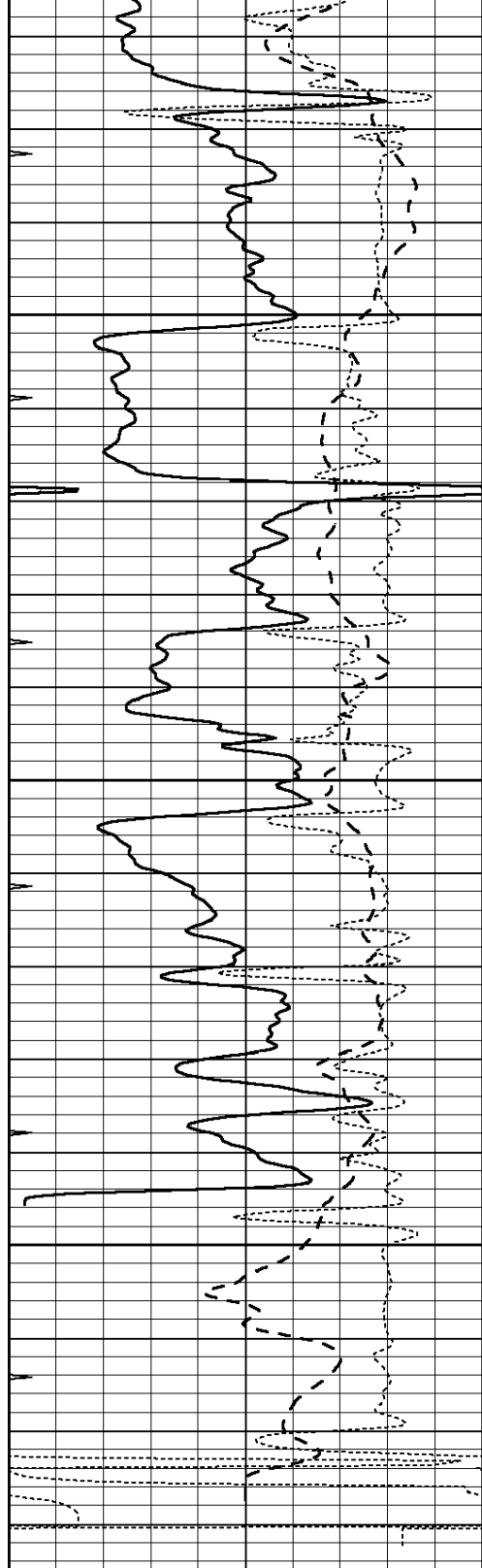
0	GAMMA RAY (GAPI)	150
-100	SP (mV)	100
-250	RxoRt	50
0	MINMK	20

0.2	RLL3 (Ohm-m)	2000
0.2	DEEP INDUCTION (Ohm-m)	2000
0.2	MEDIUM INDUCTION (Ohm-m)	2000



3900



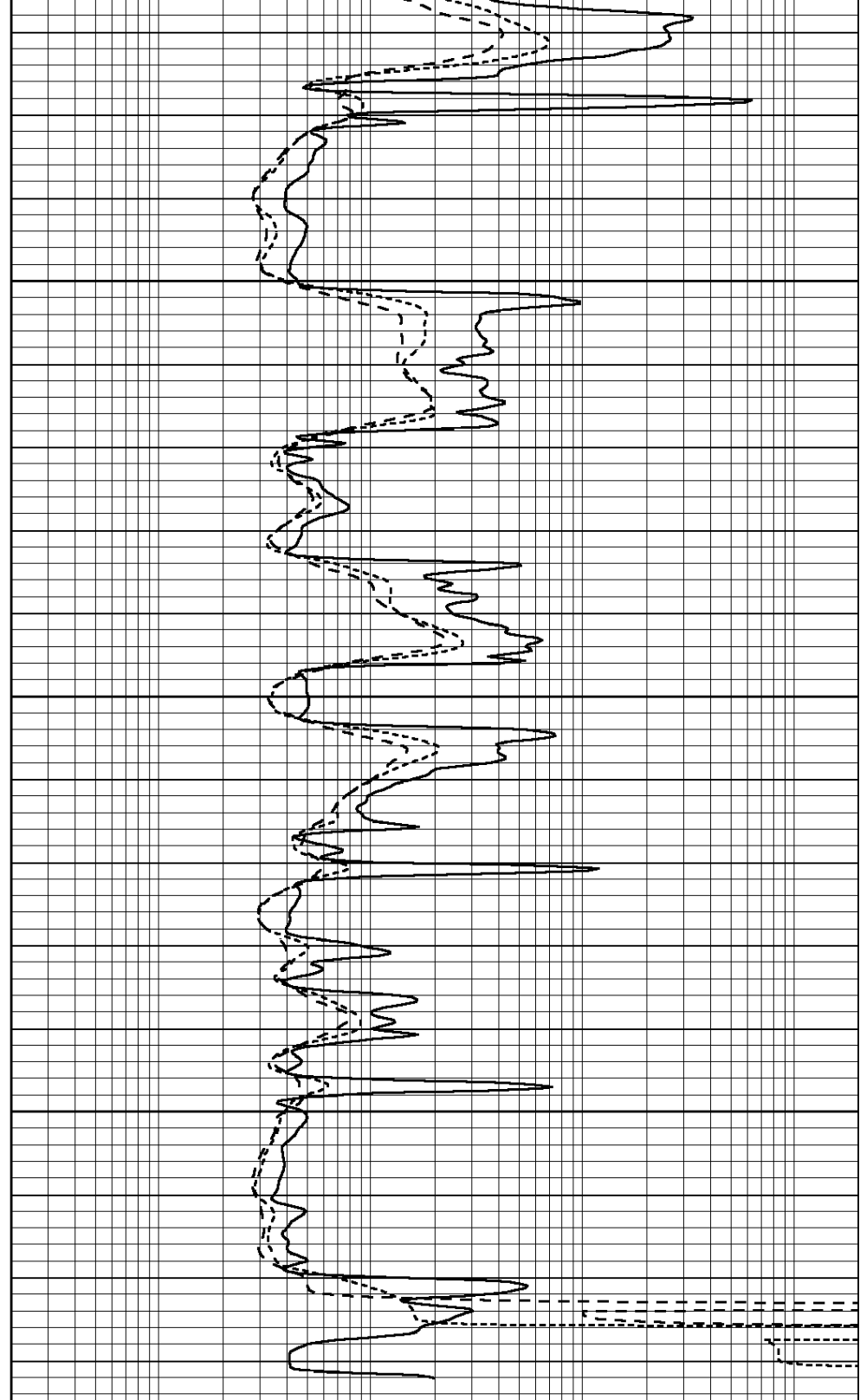


3950

4000

4050

0	GAMMA RAY (GAPI)	150
-100	SP (mV)	100
-250	RxoRt	50
0	MINMK	20



0.2	RLL3 (Ohm-m)	2000
0.2	DEEP INDUCTION (Ohm-m)	2000
0.2	MEDIUM INDUCTION (Ohm-m)	2000

Calibration Report

Database File: 25815pe.db
 Dataset Pathname: pass3.4
 Dataset Creation: Fri Sep 12 09:34:37 2014

Serial-Model:
 Surface Cal Performed:
 Downhole Cal Performed:
 After Survey Verification Performed:

PROBE7-DILG
 Sat Aug 02 01:54:49 2014
 Sat Jan 19 19:51:38 2013
 Sat Jan 19 19:51:38 2013

Surface Calibration

Readings				References			Results	
Loop:	Air	Loop		Air	Loop		m	b
Deep	0.793	0.790	V	0.000	400.000	mmho/m	550.000	14.000
Medium	0.992	1.002	V	0.000	464.000	mmho/m	580.000	-32.000
Internal:	Zero	Cal		Zero	Cal		m	b
Deep	0.041	0.642	V	0.000	400.000	mmho/m	664.874	-27.011
Medium	0.035	0.802	V	0.000	464.000	mmho/m	604.936	-21.367

Downhole Calibration

Readings				References			Results	
	Zero	Cal		Zero	Cal		m'	b'
Deep	135384.000	27094.500	mmho/m	135400.000	27082.400	mmho/m	1.000	-19.259
Medium	-47330.100	-9381.740	mmho/m	-47327.100	-9389.280	mmho/m	1.000	-10.154
LL3		7.322	V		1400.000	Ohm-m		
		0.038	V		20.000	Ohm-m		
		-7.273	V		4000.000	mmho-m		

After Survey Verification

Readings				Targets			Results	
	Zero	Cal		Zero	Cal		m'	b'
Deep	0.000	0.000	mmho/m	135384.000	27094.500	mmho/m	1.000	0.000
Medium	0.000	0.000	mmho/m	-47330.100	-9381.740	mmho/m	1.000	0.000
LL3		0.000	Ohm-m		1400.000	Ohm-m		
		0.000	Ohm-m		20.000	Ohm-m		
		0.000	mmho-m		4000.000	mmho-m		

Litho Density Calibration Report
 Serial: 002 Model: PRB

Master Calibration

Performed Tue May 27 11:05:38 2014

	Background	Magnesium	Aluminum	Sandstone	
Window 1	819.4	6916.8	2053.5	6968.1	cps
Window 2	780.4	5708.6	1783.3	5727.0	cps
Window 3	656.9	3349.4	1194.5	3336.6	cps
Window 4	187.3	183.4	186.5	186.2	cps
Long Space	0.0	4928.2	1002.9	4946.6	cps
Short Space	1.2	1266.1	819.1	1290.7	cps
Rho		1.7100	2.5960	1.3800	g/cc
Pe		0.0000	2.5700	1.5500	
Rib Angle	: 44.7	Rib Slope	: 0.990	Density/Spine Ratio	: 0.537
Spine Angle	: 74.7	Spine Slope	: 3.655	Spine Intercept	: -17.6

Before Survey Verification

Performed Wed Dec 31 18:00:00 1969

Window 1	0.0	0.0	0.0	0.0	cps
Window 2	0.0	0.0	0.0	0.0	cps
Window 3	0.0	0.0	0.0	0.0	cps
Window 4	0.0	0.0	0.0	0.0	cps
Long Space	0.0	0.0	0.0	0.0	cps

Long Space	0.0	0.0	0.0	0.0	cps
Short Space	0.0	0.0	0.0	0.0	cps
Measured Rho		0.0000	0.0000	0.0000	g/cc
Measured Correction		0.0000	0.0000	0.0000	g/cc
Measured Pe			0.0000	0.0000	

After Survey Verification

Performed Wed Dec 31 18:00:00 1969

Window 1	0.0	0.0	0.0	0.0	cps
Window 2	0.0	0.0	0.0	0.0	cps
Window 3	0.0	0.0	0.0	0.0	cps
Window 4	0.0	0.0	0.0	0.0	cps
Long Space	0.0	0.0	0.0	0.0	cps
Short Space	0.0	0.0	0.0	0.0	cps
Measured Rho		0.0000	0.0000	0.0000	g/cc
Measured Correction		0.0000	0.0000	0.0000	g/cc
Measured Pe			0.0000	0.0000	

Compensated Neutron Calibration Report

Serial Number: 080620
 Tool Model: Probe

PRE-SURVEY VERIFICATION

Detector	Readings	Measured	Target
Short Space	cps		
Long Space	cps	pu	pu

POST-SURVEY VERIFICATION

Detector	Readings	Measured	Target
Short Space	cps		
Long Space	cps	pu	pu

Gamma Ray Calibration Report

Serial Number: 46001
 Tool Model: Probe1
 Performed: Sat Aug 02 01:56:52 2014

Calibrator Value: 1.0 GAPI

Background Reading: 0.0 cps
 Calibrator Reading: 1.0 cps

Sensitivity: 0.2600 GAPI/cps