



**COMPLETION
& PRODUCTION
SERVICES CO.**

**SONIC
LOG**

Company BLUERIDGE PETROLEUM CORP.
Well MAY #1-15
Field
County DECATUR State KANSAS

Location: API #: 15-039-21207-00-00
330' FSL & 710' FWL
W/2 - SE - SW - SW
SEC 15 TWP 2S RGE 30W
Permanent Datum GROUND LEVEL Elevation 2784
Log Measured From KELLY BUSHING 9' A.G.L.
Drilling Measured From KELLY BUSHING
Other Services
CDL/CNL/PE
DIL/MEL
Elevation
K.B. 2793
D.F. 2791
G.L. 2784

Date	9/12/14		
Run Number	TWO		
Depth Driller	4080		
Depth Logger	4081		
Bottom Logged Interval	4071		
Top Log Interval	300		
Casing Driller	8 5/8 @ 310'		
Casing Logger	311'		
Bit Size	7.875		
Type Fluid in Hole	CHEMICAL MUD		
Density / Viscosity	9.0/67	CHLORIDES 2,000 PPM	
pH / Fluid Loss	9.0/6.4		
Source of Sample	FLOWLINE		
Rm @ Meas. Temp	2.10 @ 58F		
Rmf @ Meas. Temp	1.58 @ 58F		
Rmc @ Meas. Temp	2.52 @ 58F		
Source of Rmf / Rmc	MEASURED		
Rm @ BHT	1.04 @ 117F		
Time Circulation Stopped	2 HOURS		
Time Logger on Bottom			
Maximum Recorded Temperature	117F		
Equipment Number	3802		
Location	HAYS, KS.		
Recorded By	JEFF GRONEWEG		
Witnessed By	CLINT MUSGROVE		

<<< Fold Here >>>

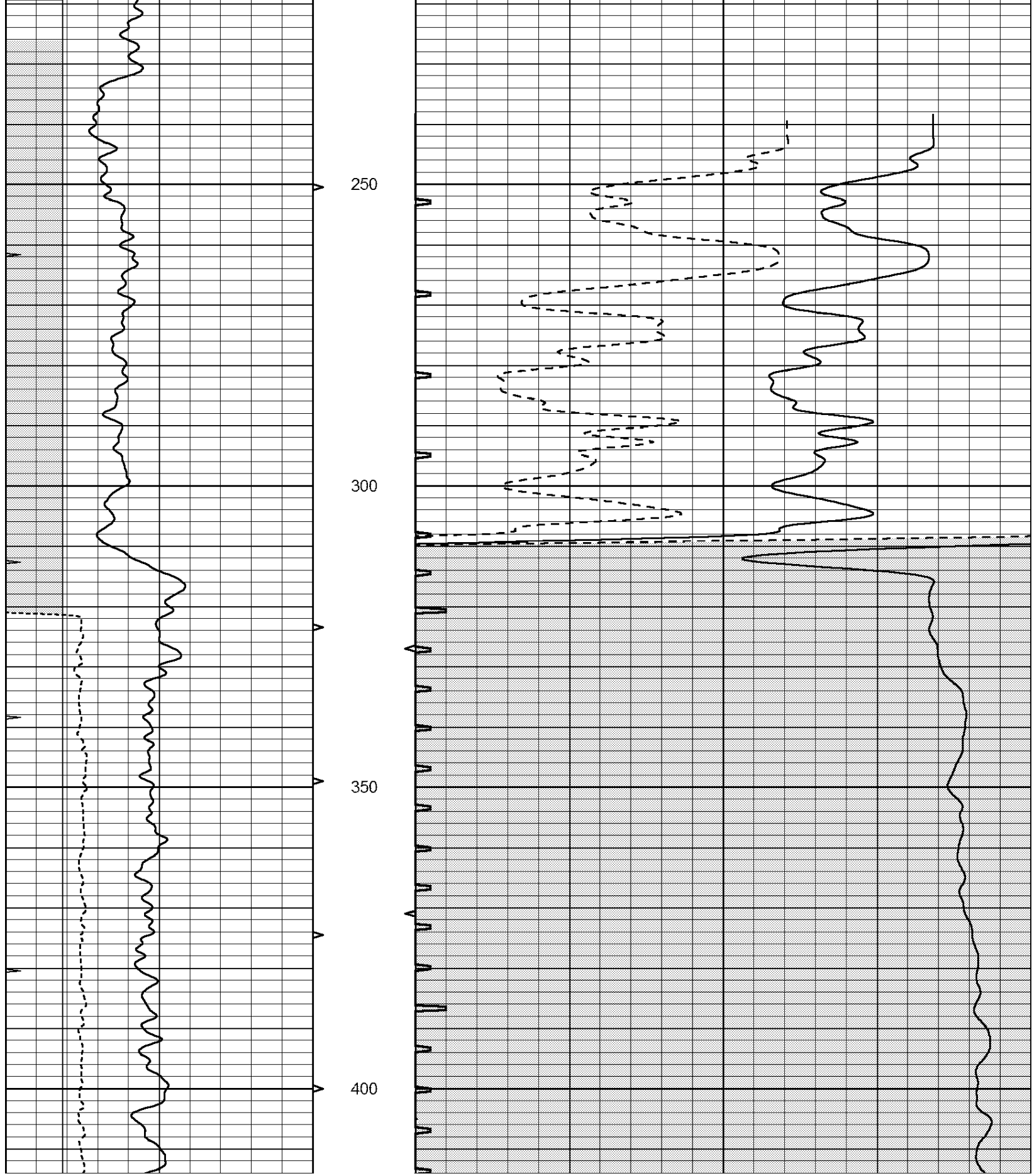
All interpretations are opinions based on inferences from electrical or other measurements and we cannot and do not guarantee the accuracy or correctness of any interpretation, and we shall not, except in the case of gross or willful negligence on our part, be liable or responsible for any loss, costs, damages, or expenses incurred or sustained by anyone resulting from any interpretation made by any of our officers, agents or employees. These interpretations are also subject to our general terms and conditions set out in our current Price Schedule.

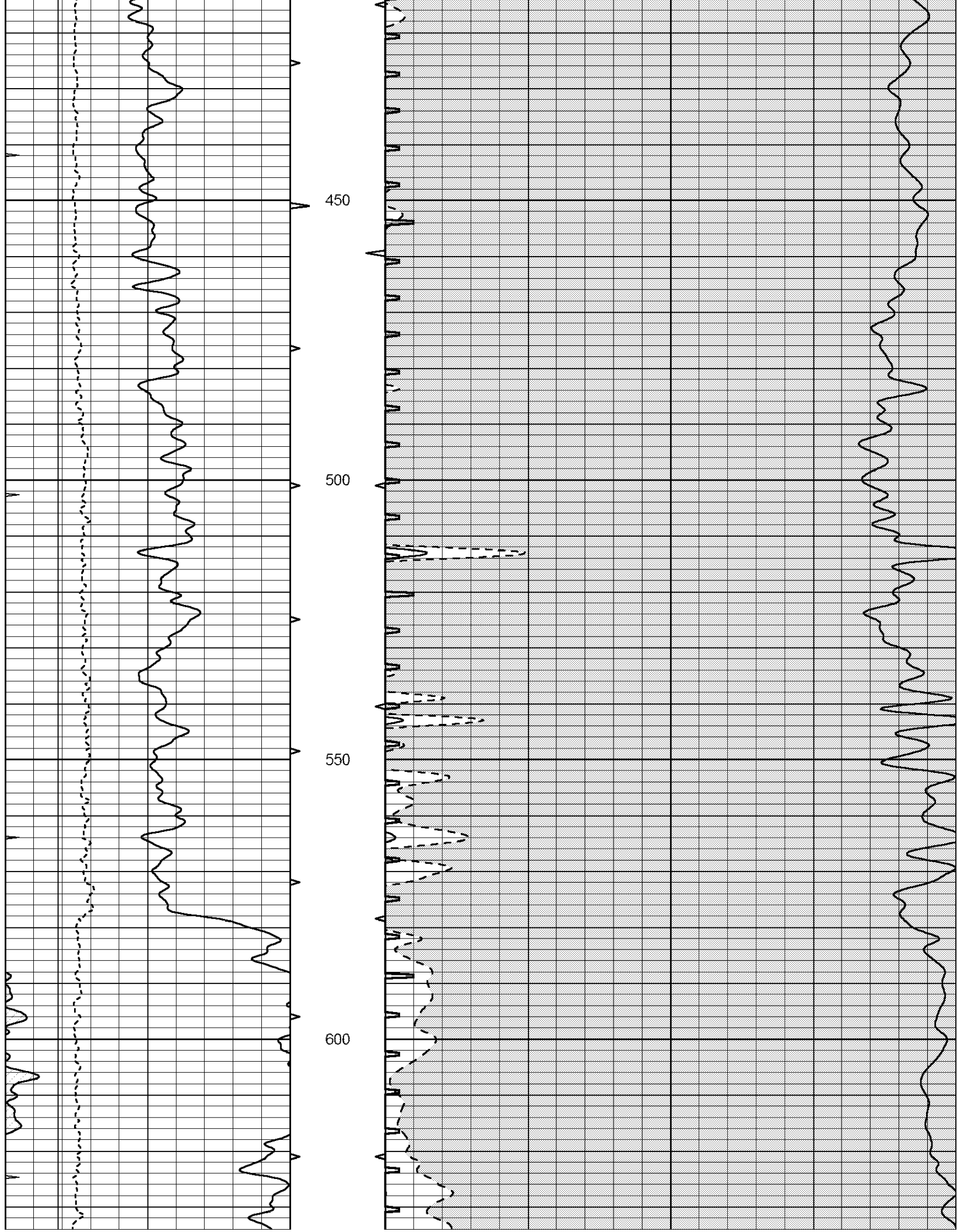
Comments

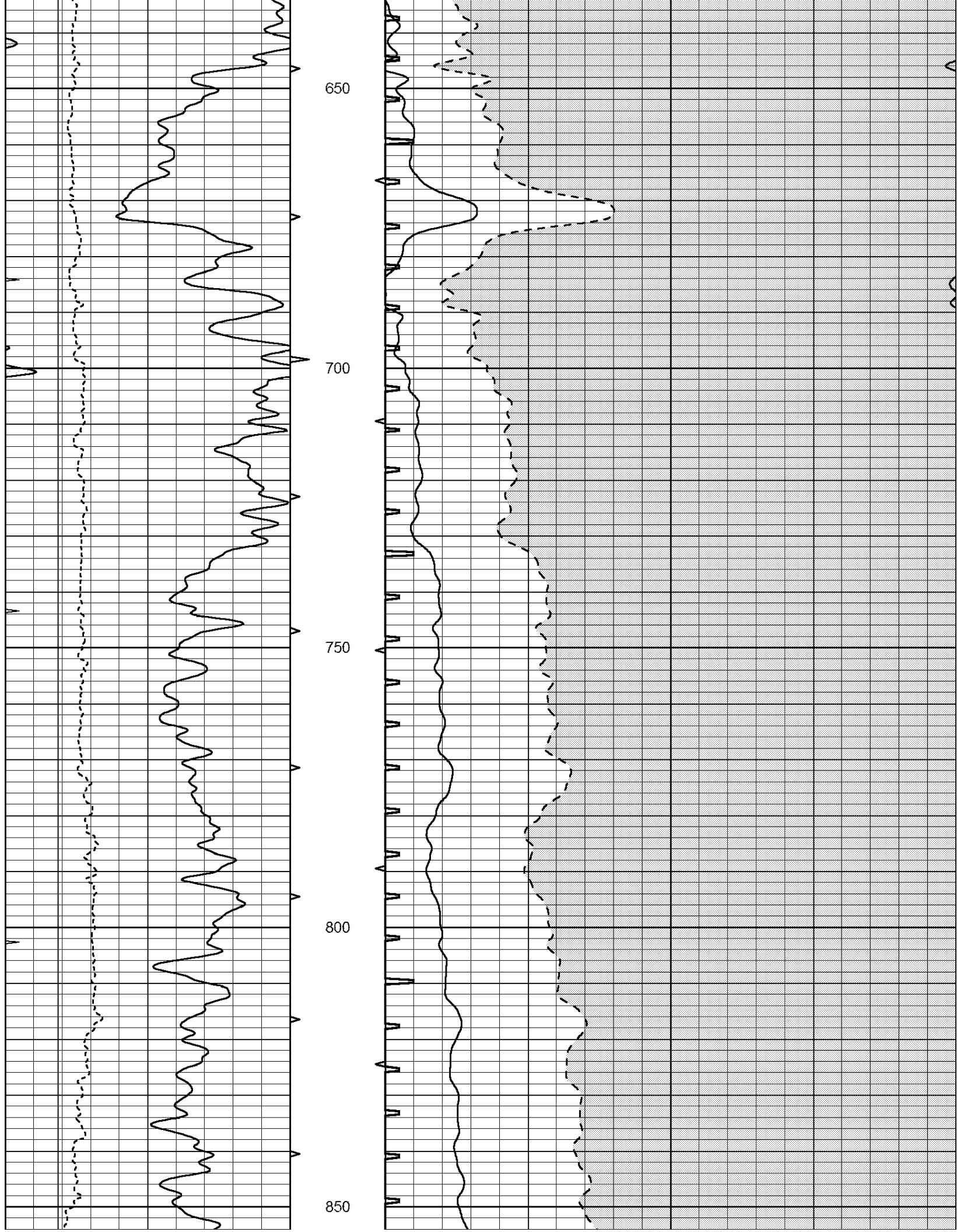
NABORS COMPLETION & PRODUCTION SERVICES CO.
785 (628 - 6395)
THANK YOU FOR YOUR BUSINESS
DIRECTIONS : OBERLIN, KS - 7 MILES WEST - 1 MILE NORTH
1/2 MILE WEST - 3 MILES NORTH - WEST INTO

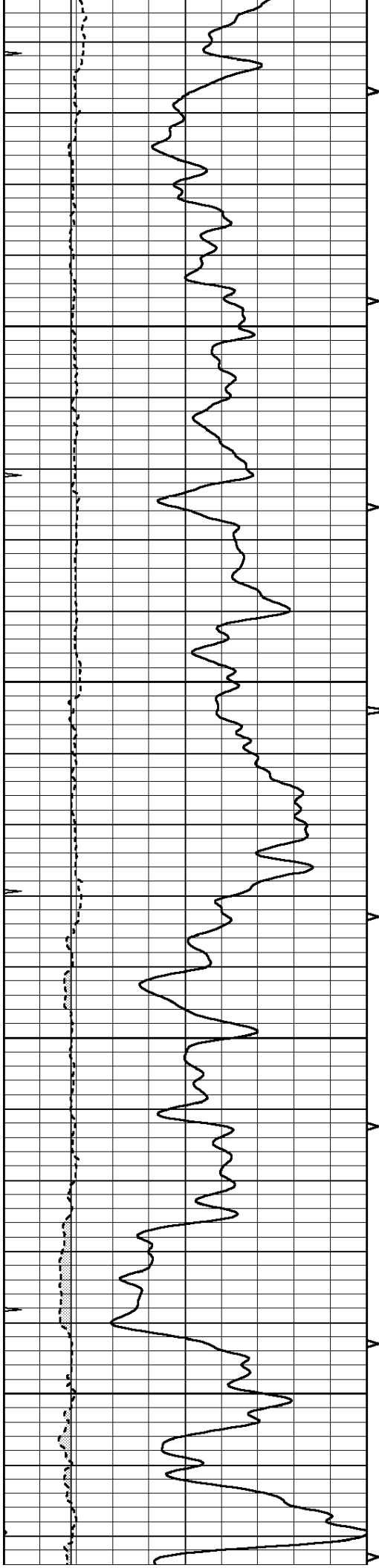
Database File: 25815pe.db
Dataset Pathname: pass6.4
Presentation Format: _slt
Dataset Creation: Fri Sep 12 11:48:06 2014

0	GAMMA RAY (GAPI)	150	ABHV	140	DELTA TIME (usec/ft)	40
6	MELCAL (in)	16	10 (ft3)	0 30	SONIC POROSITY (pu)	-10
0	MINMK	20	TBHV	0	ITT (msec)	20
			0 (ft3)	10		







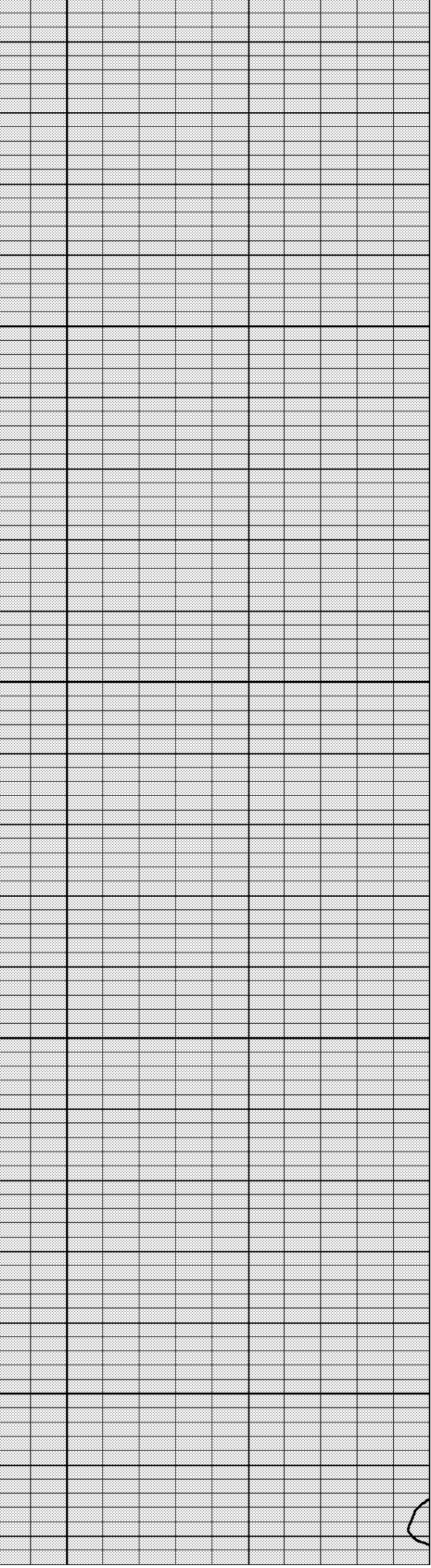
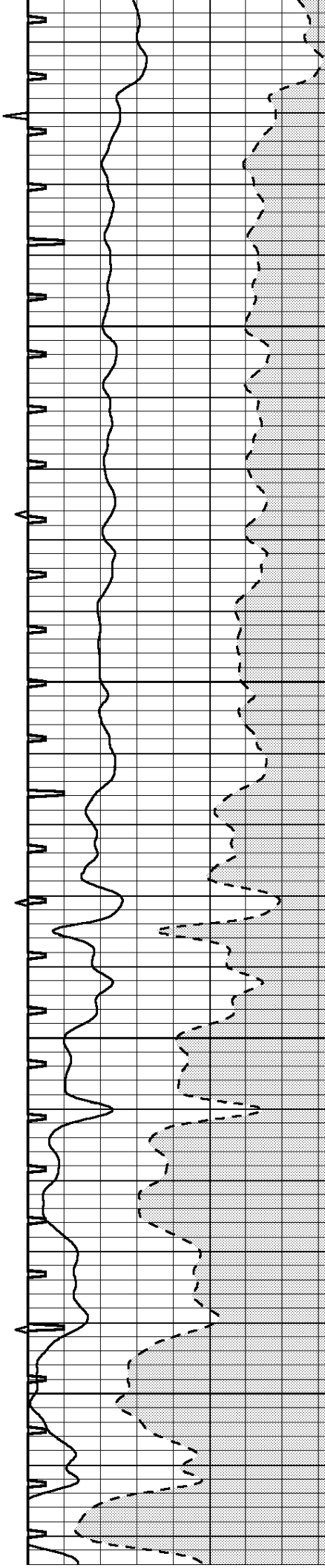


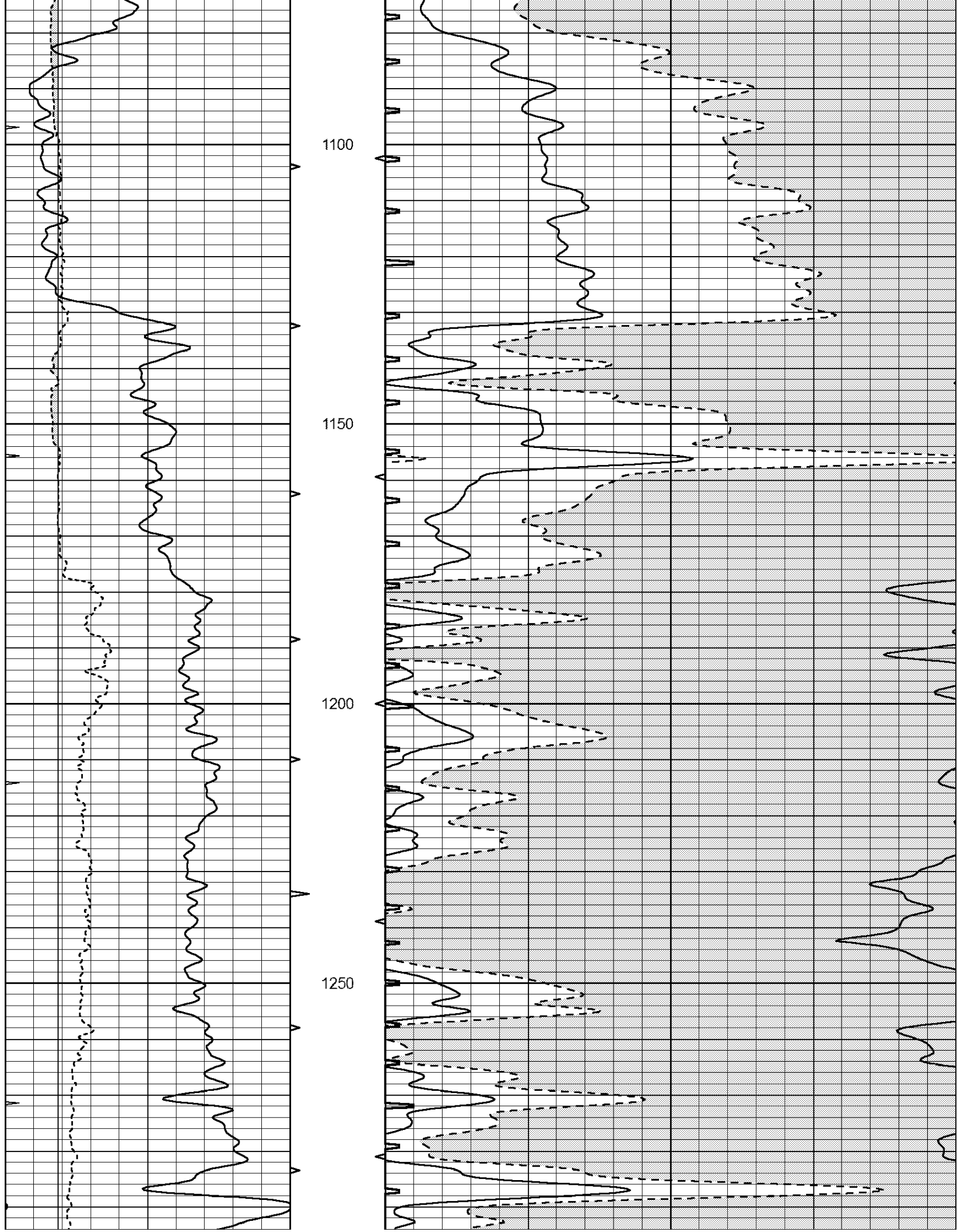
900

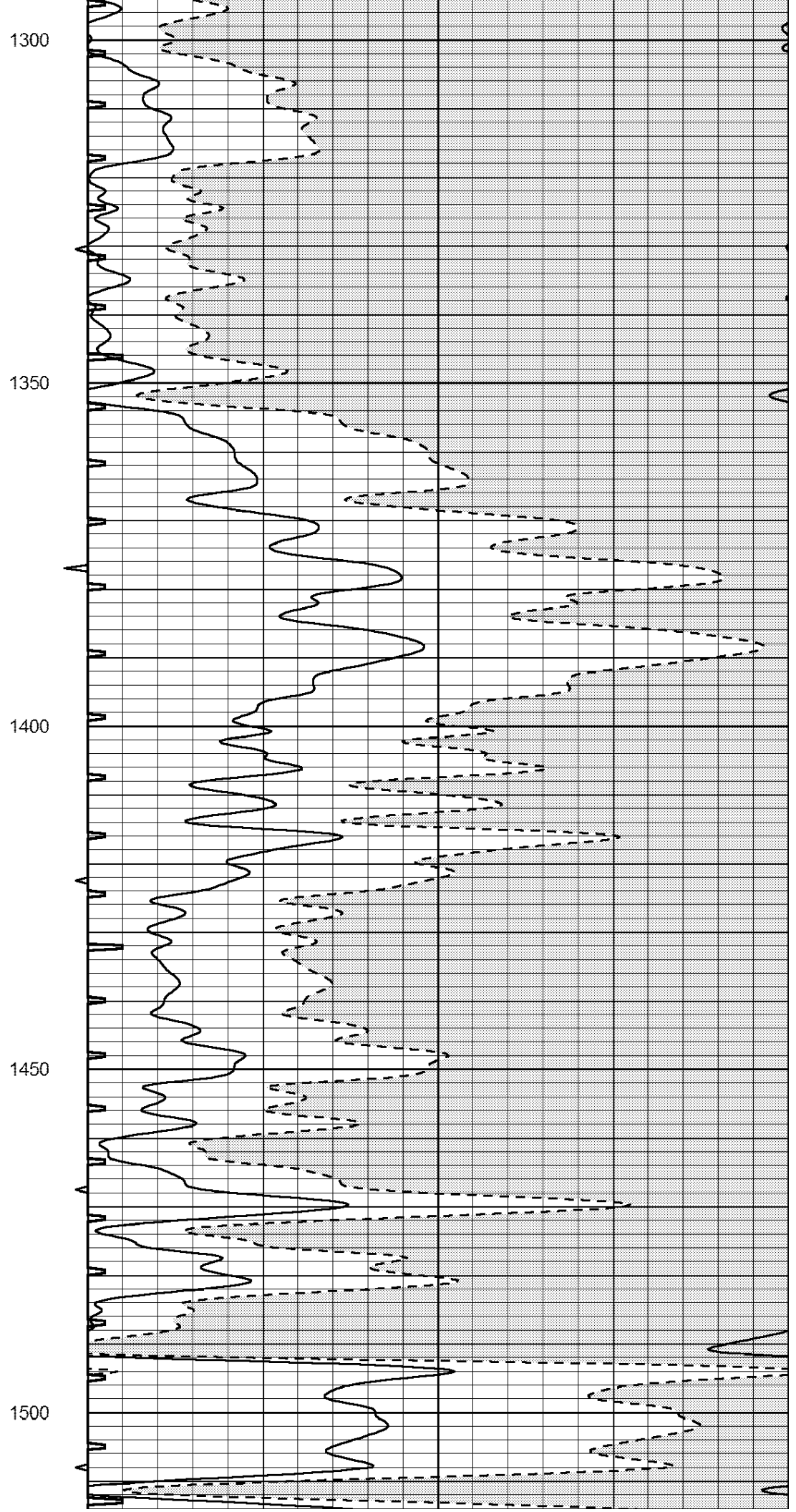
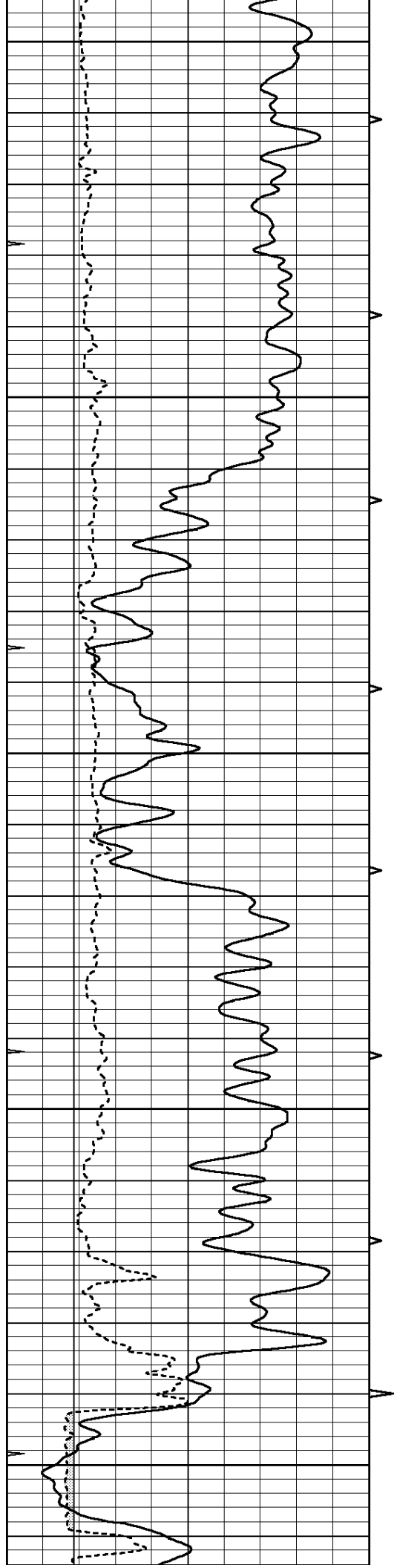
950

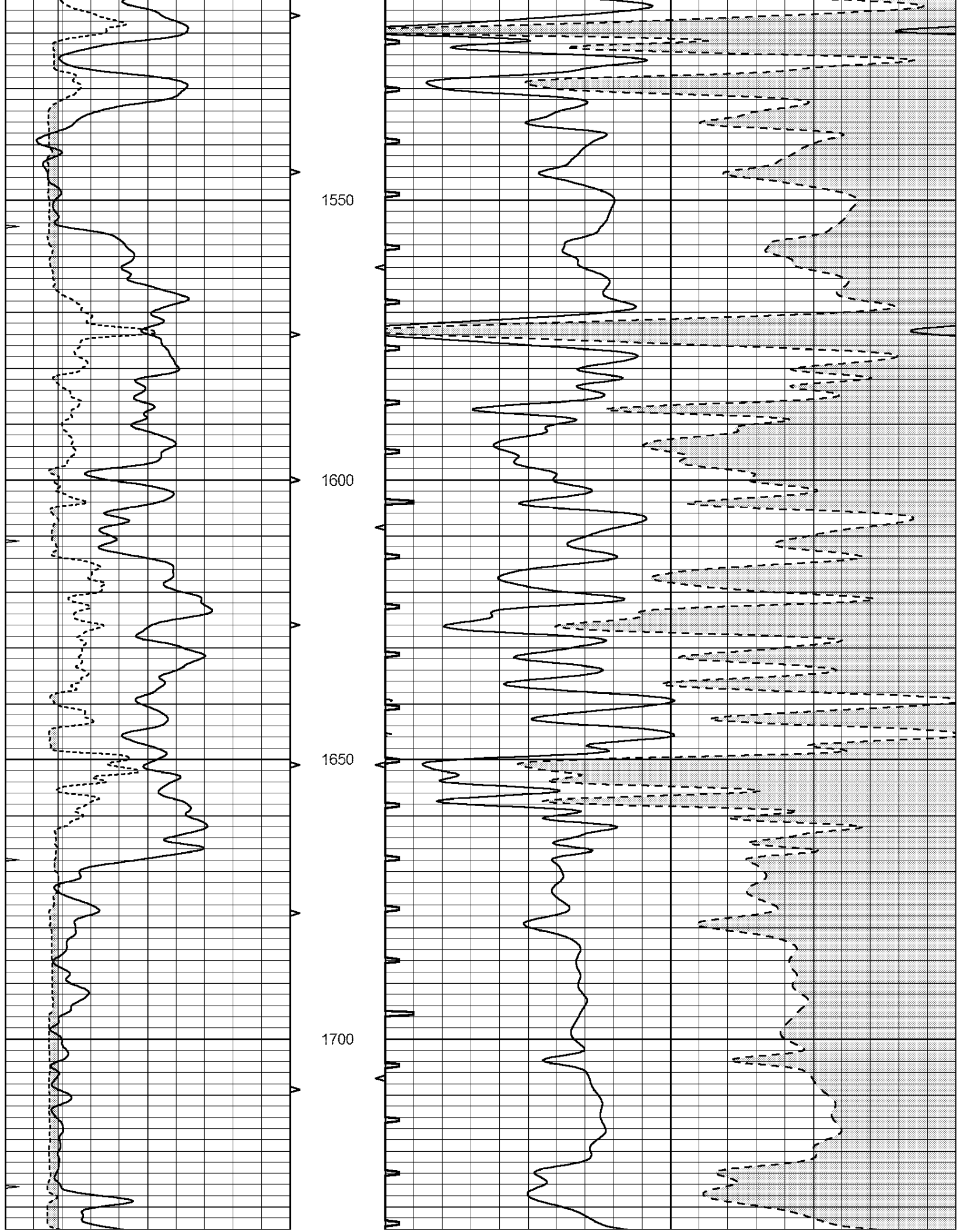
1000

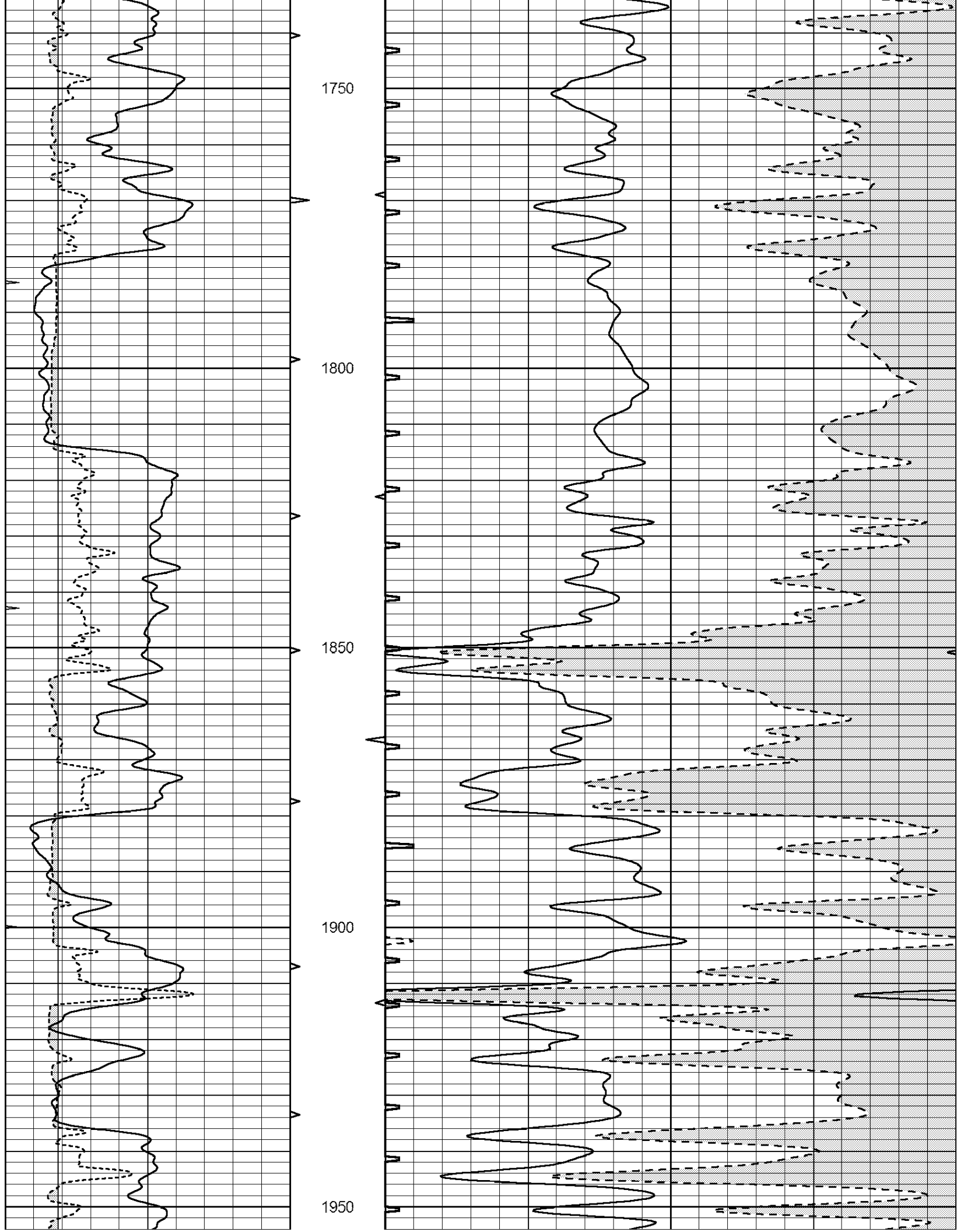
1050

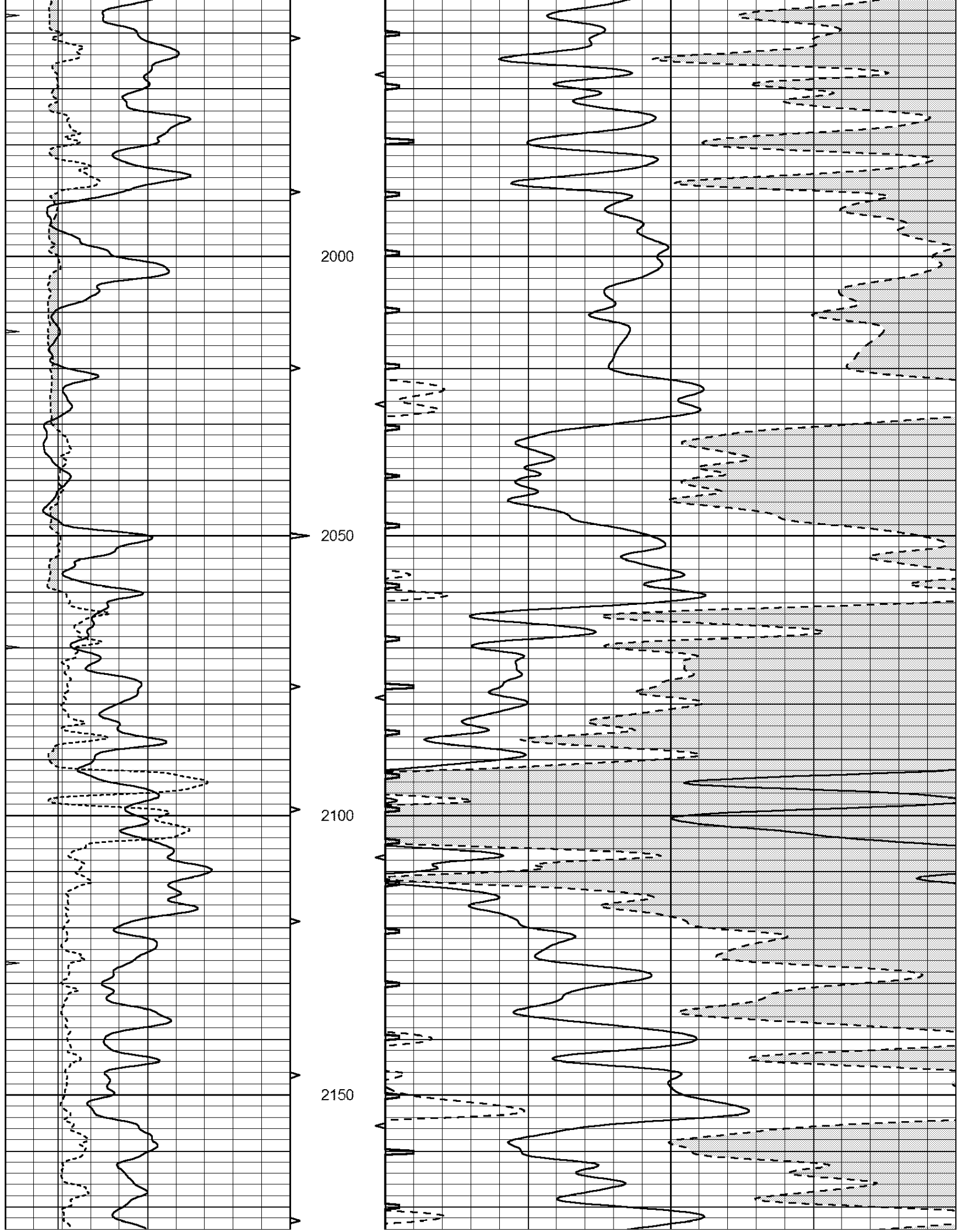


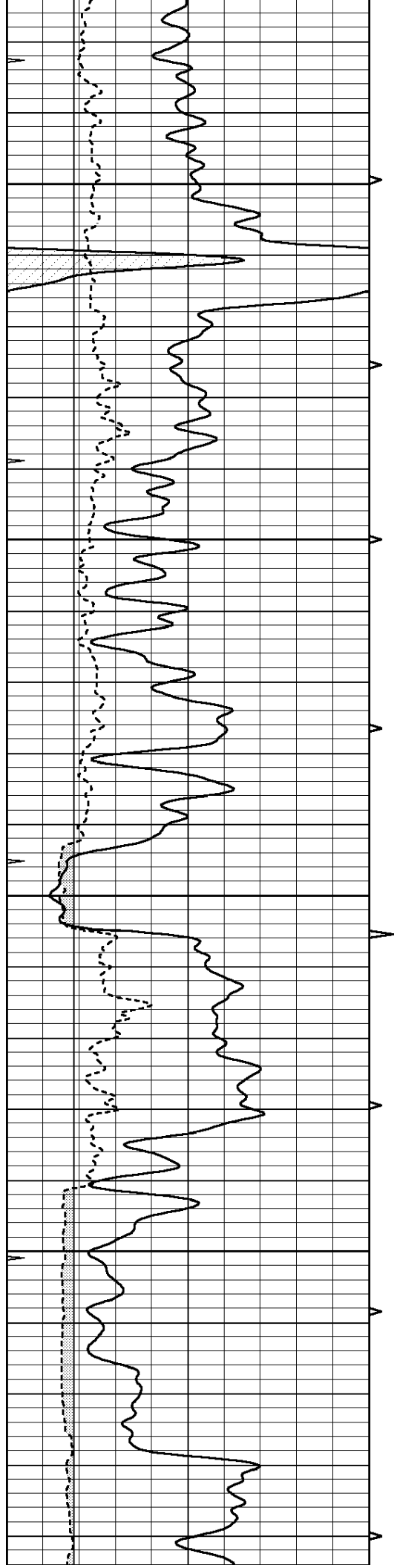










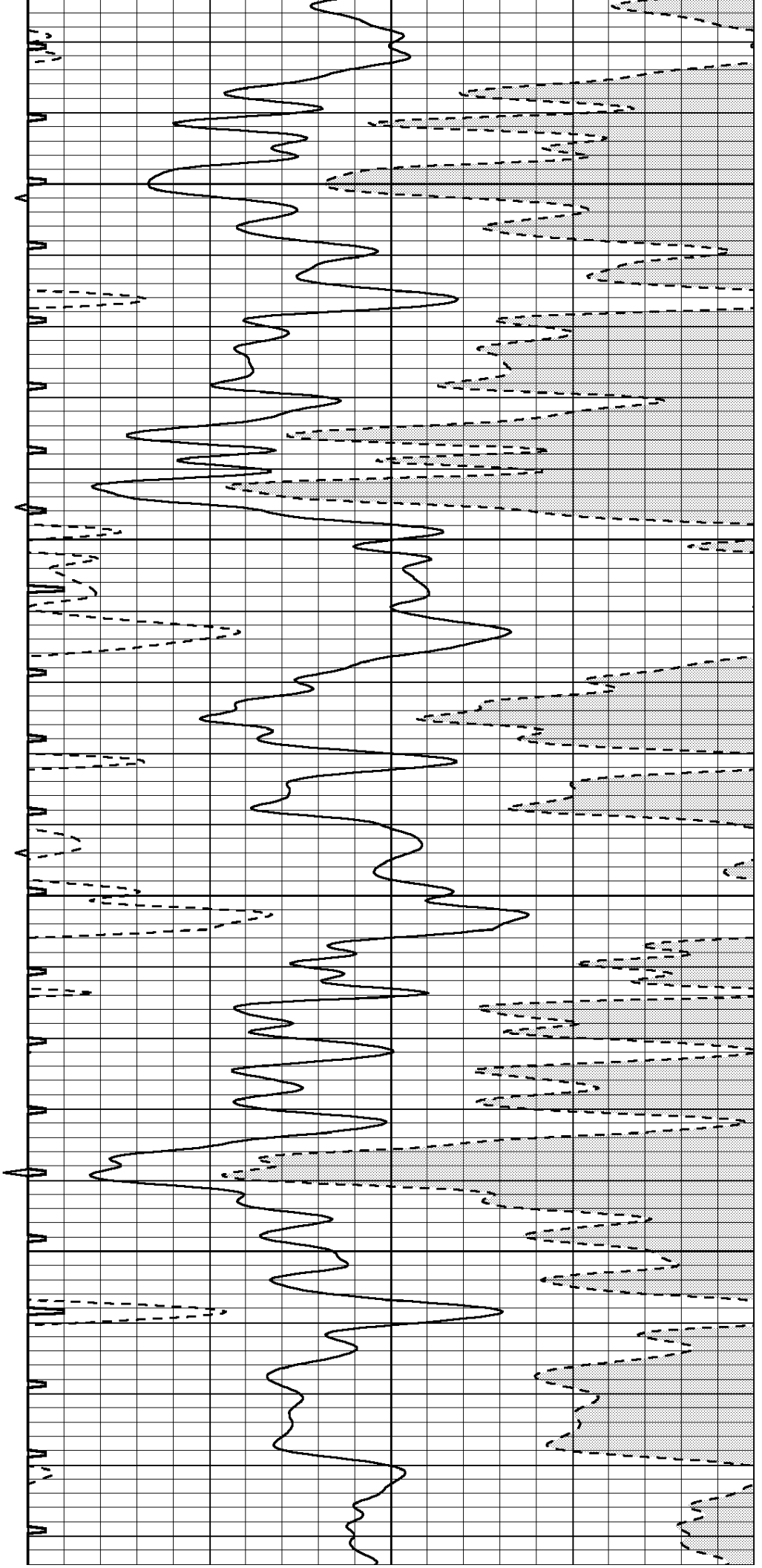


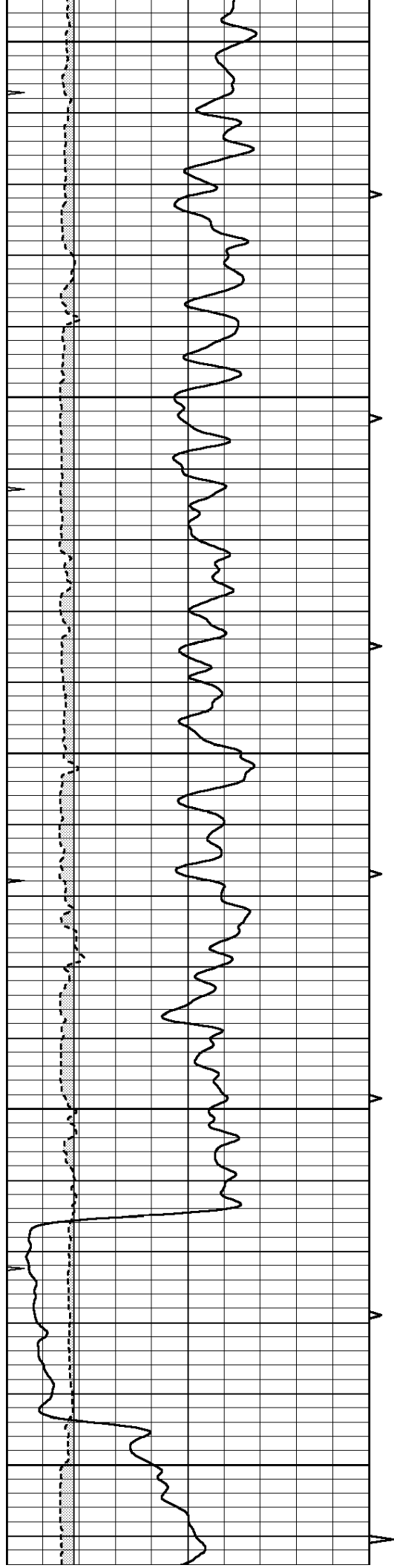
2200

2250

2300

2350





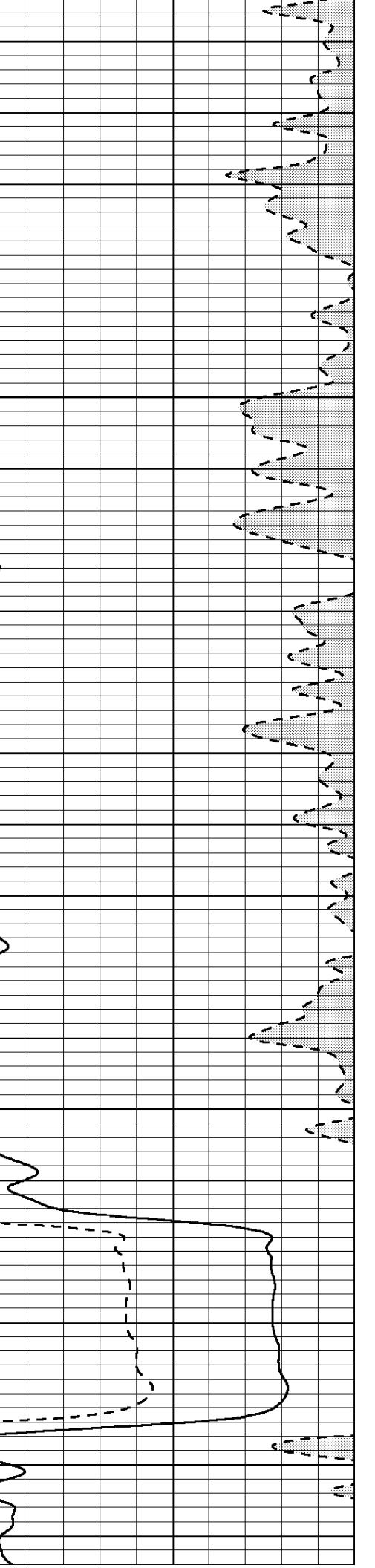
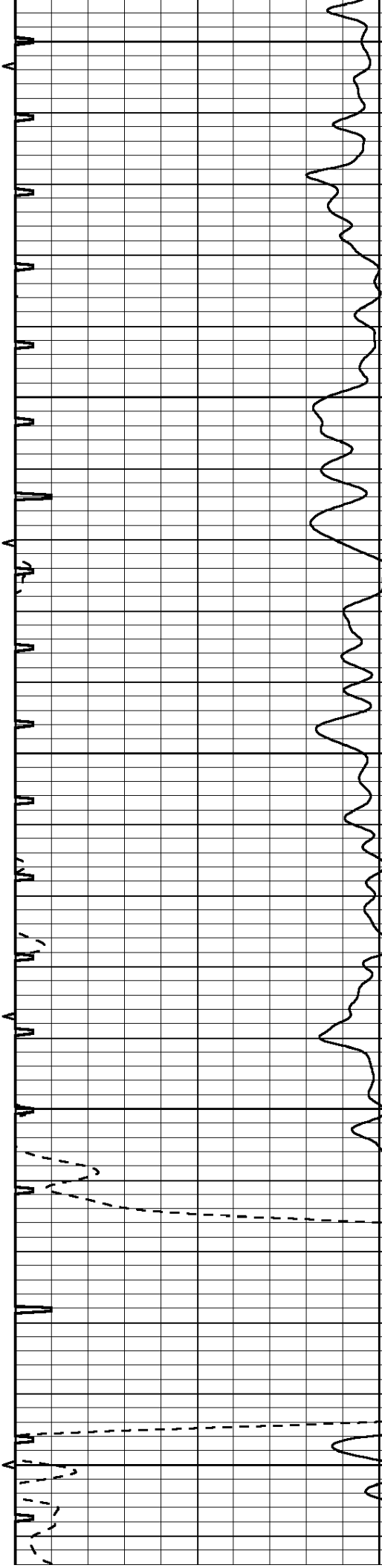
2400

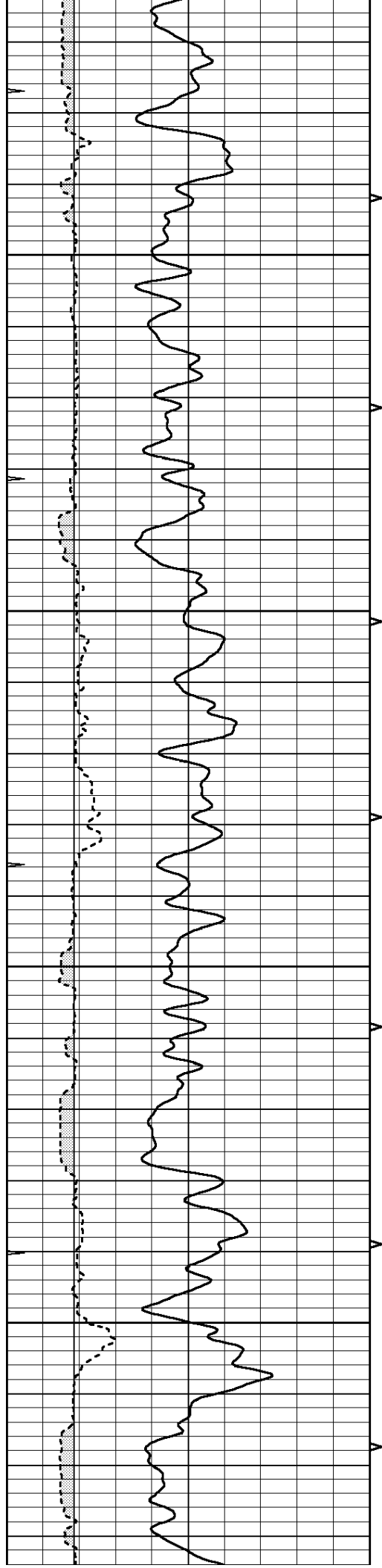
2450

2500

2550

2600



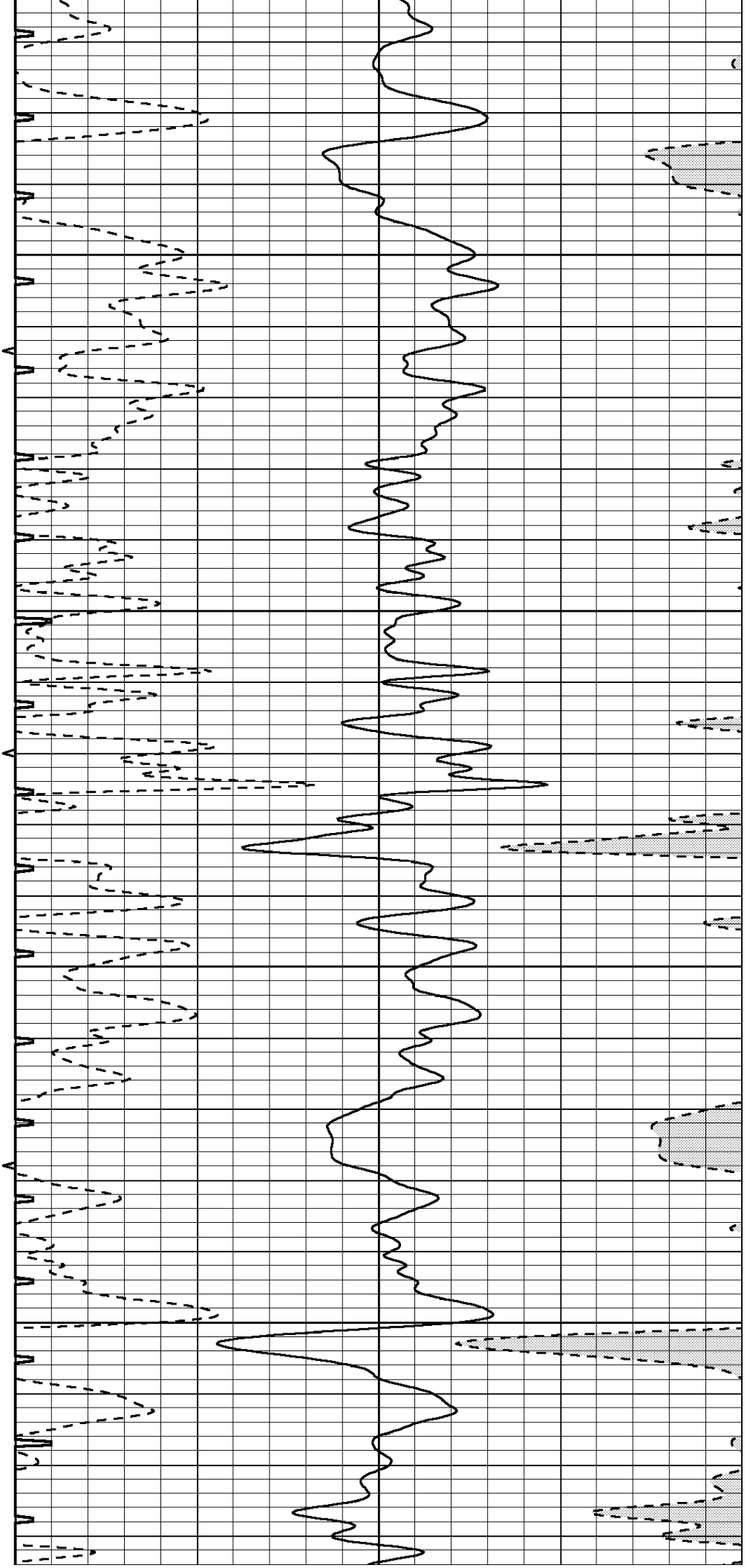


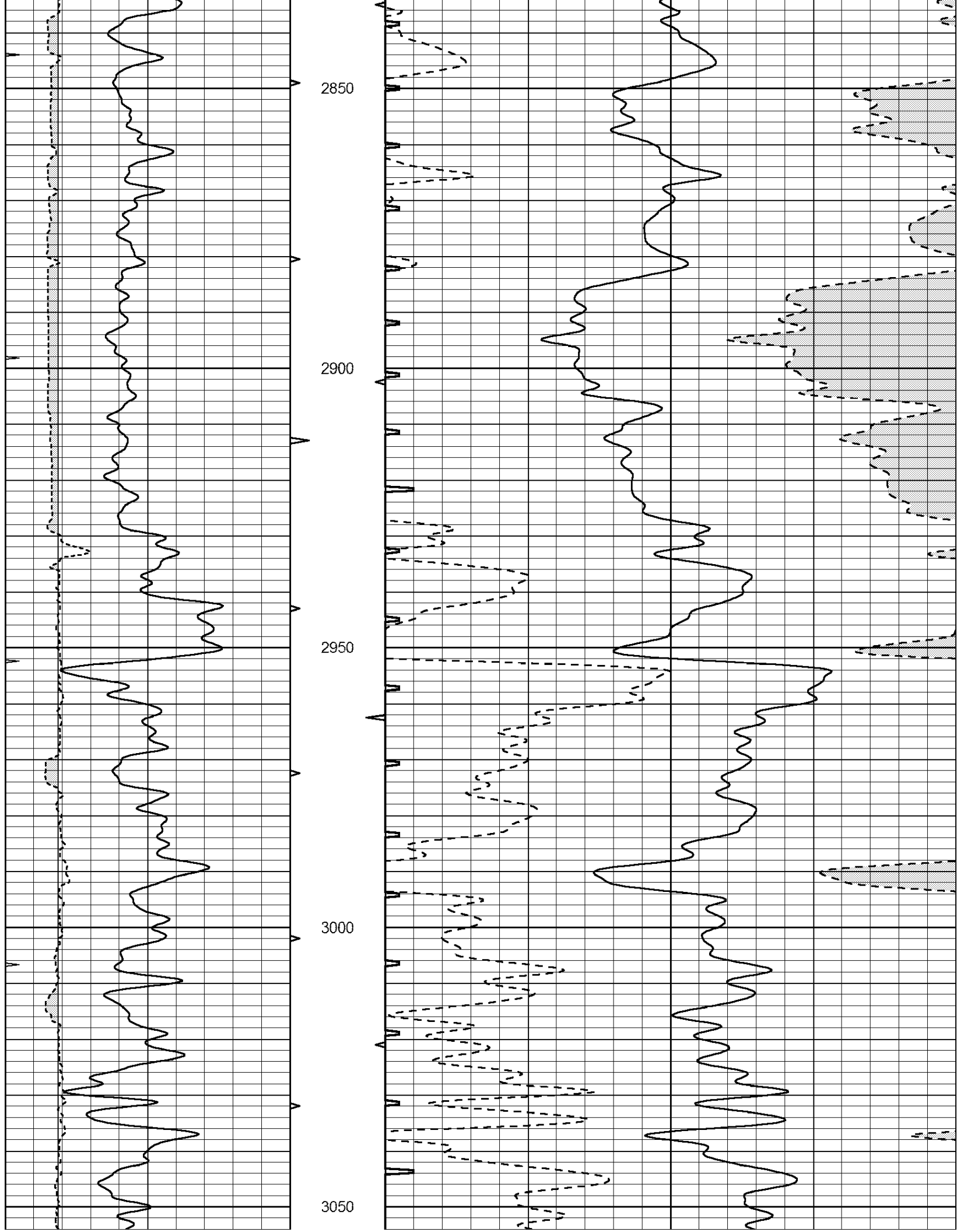
2650

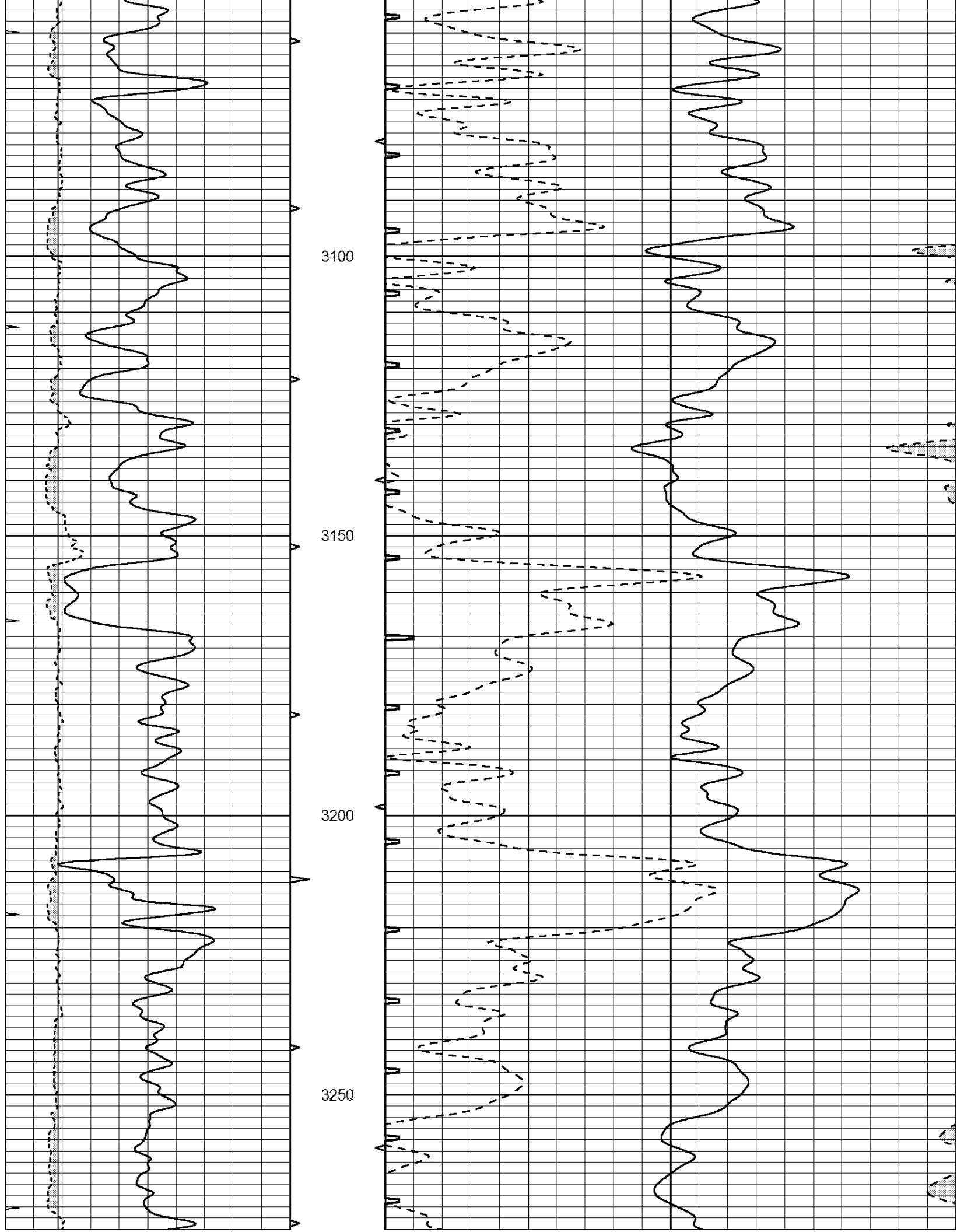
2700

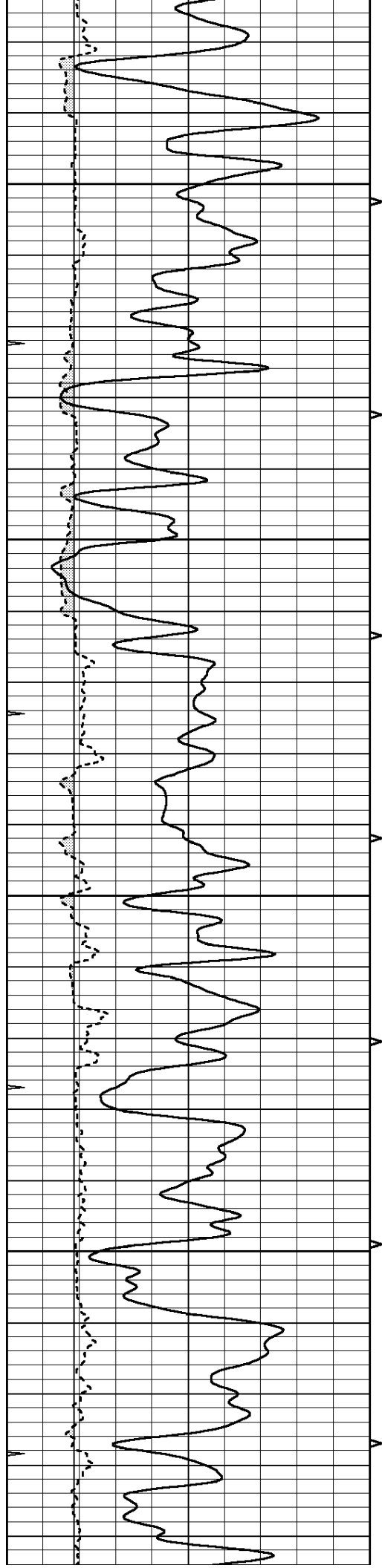
2750

2800







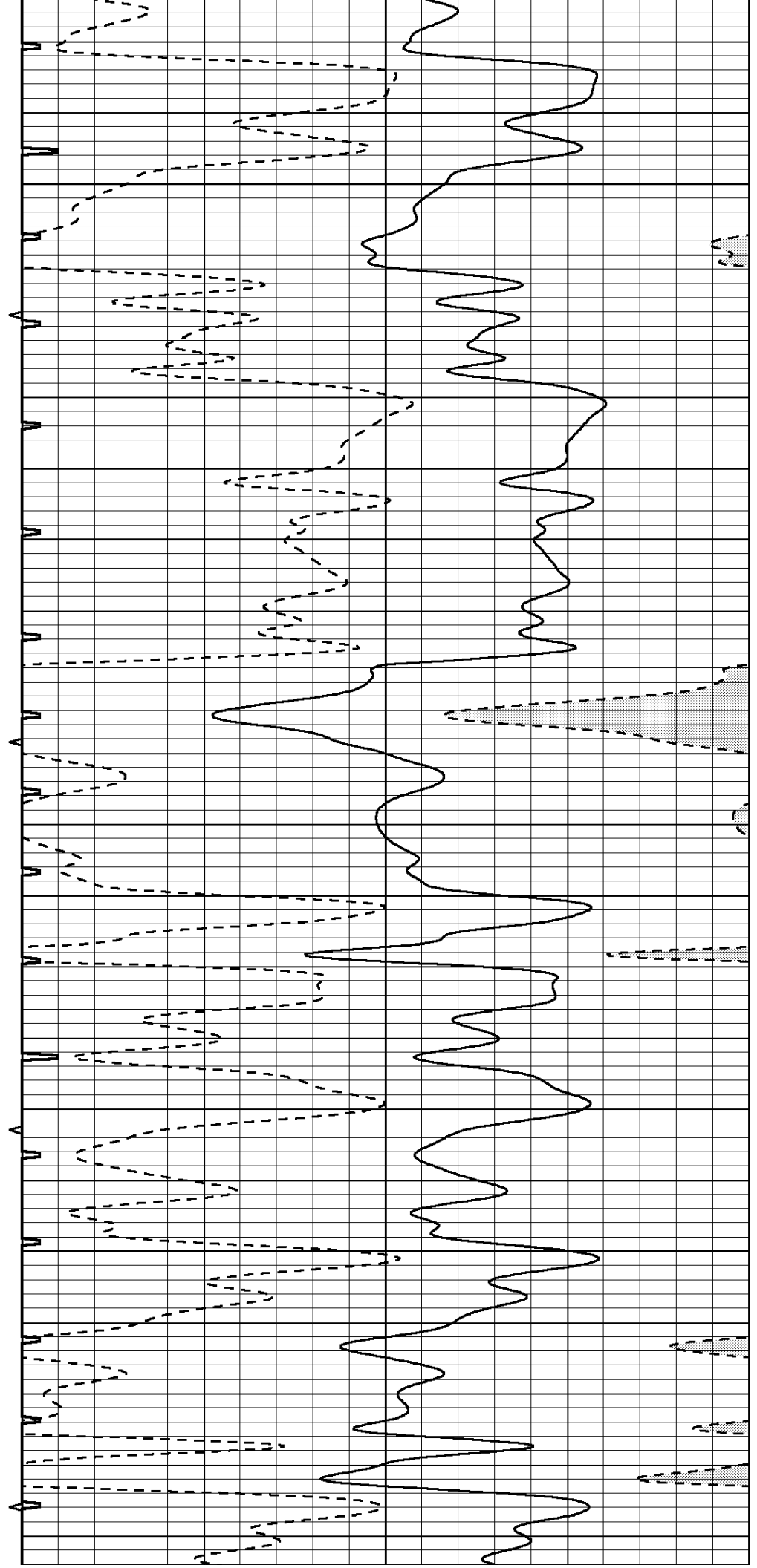


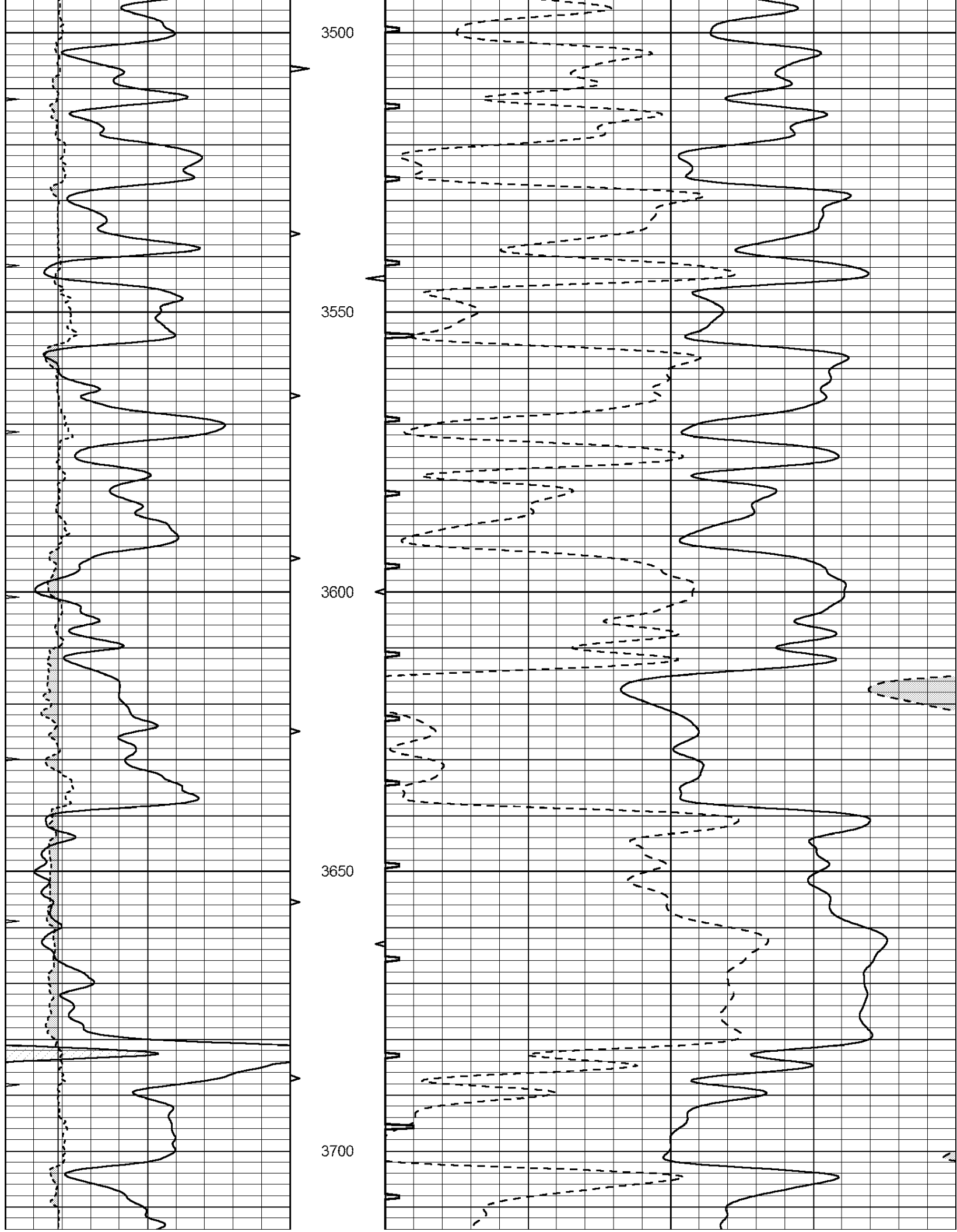
3300

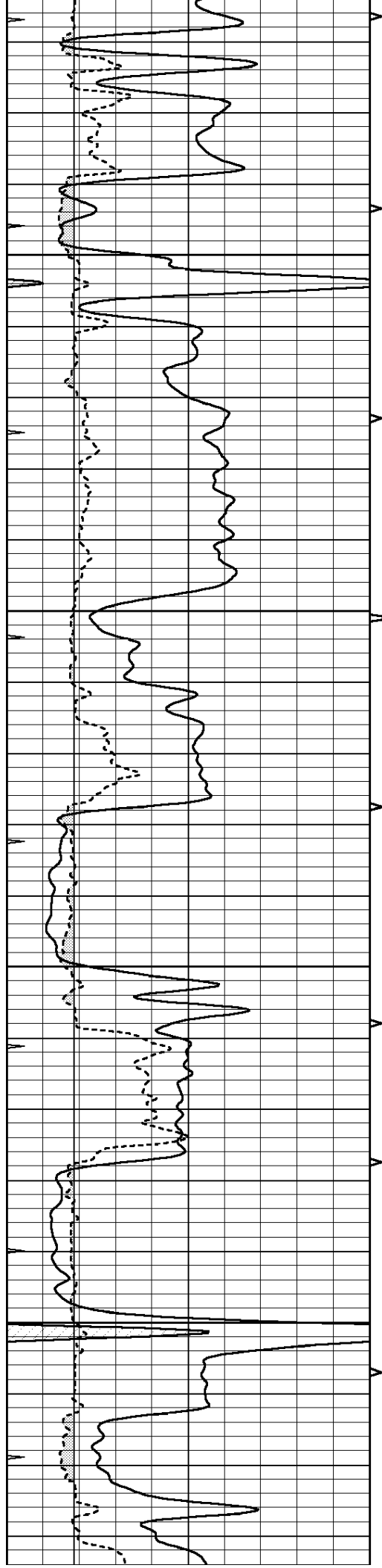
3350

3400

3450





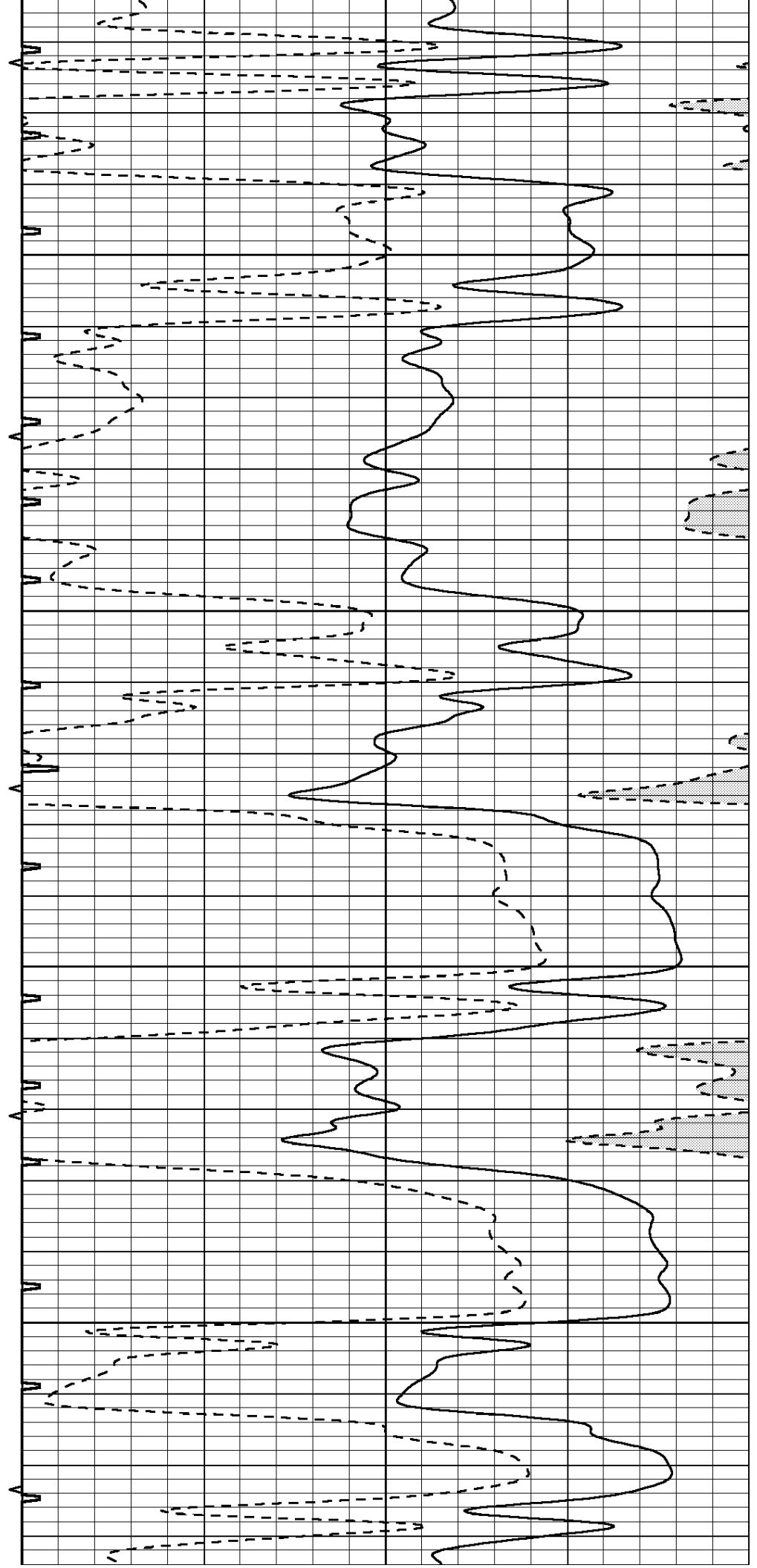


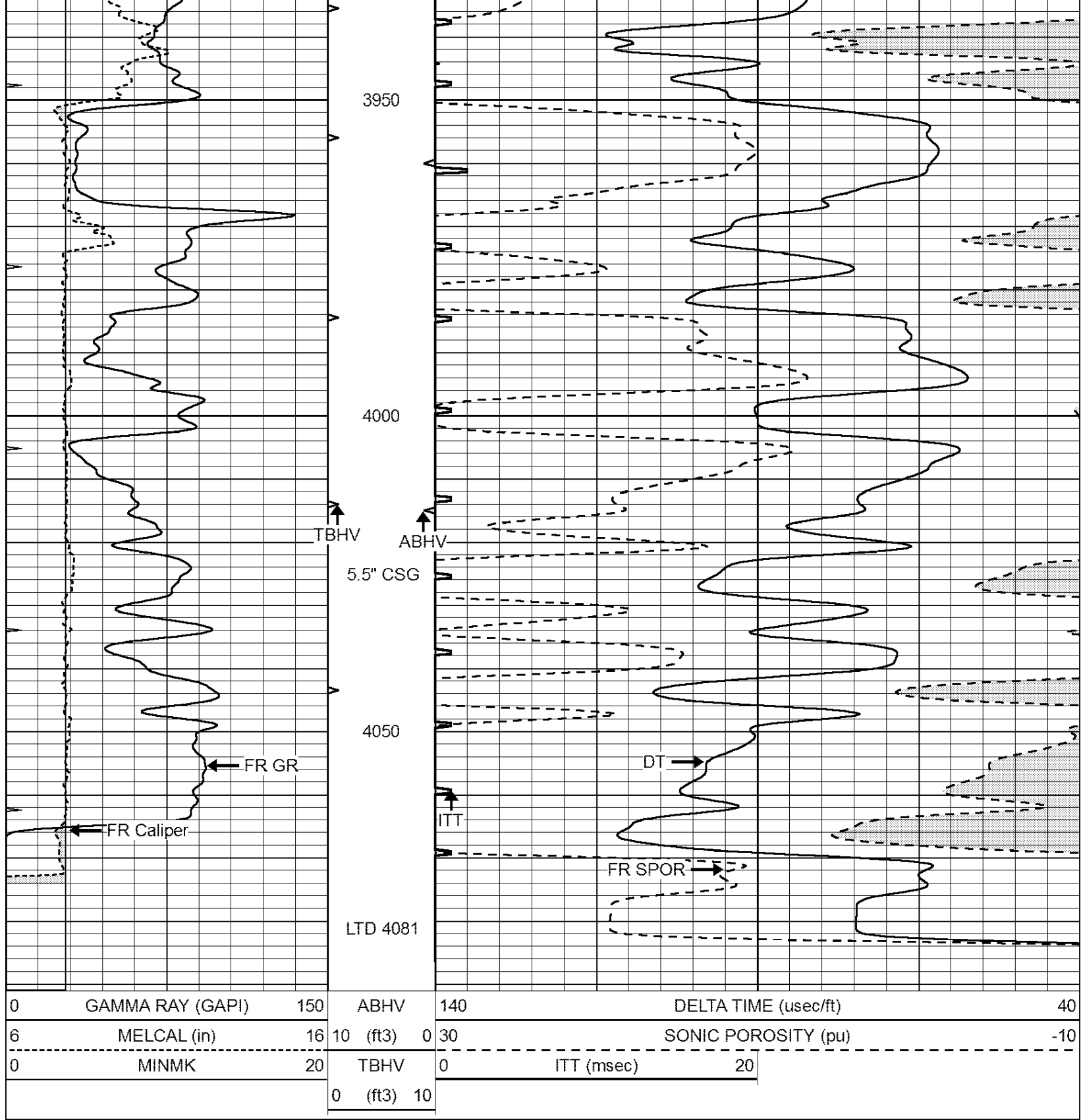
3750

3800

3850

3900

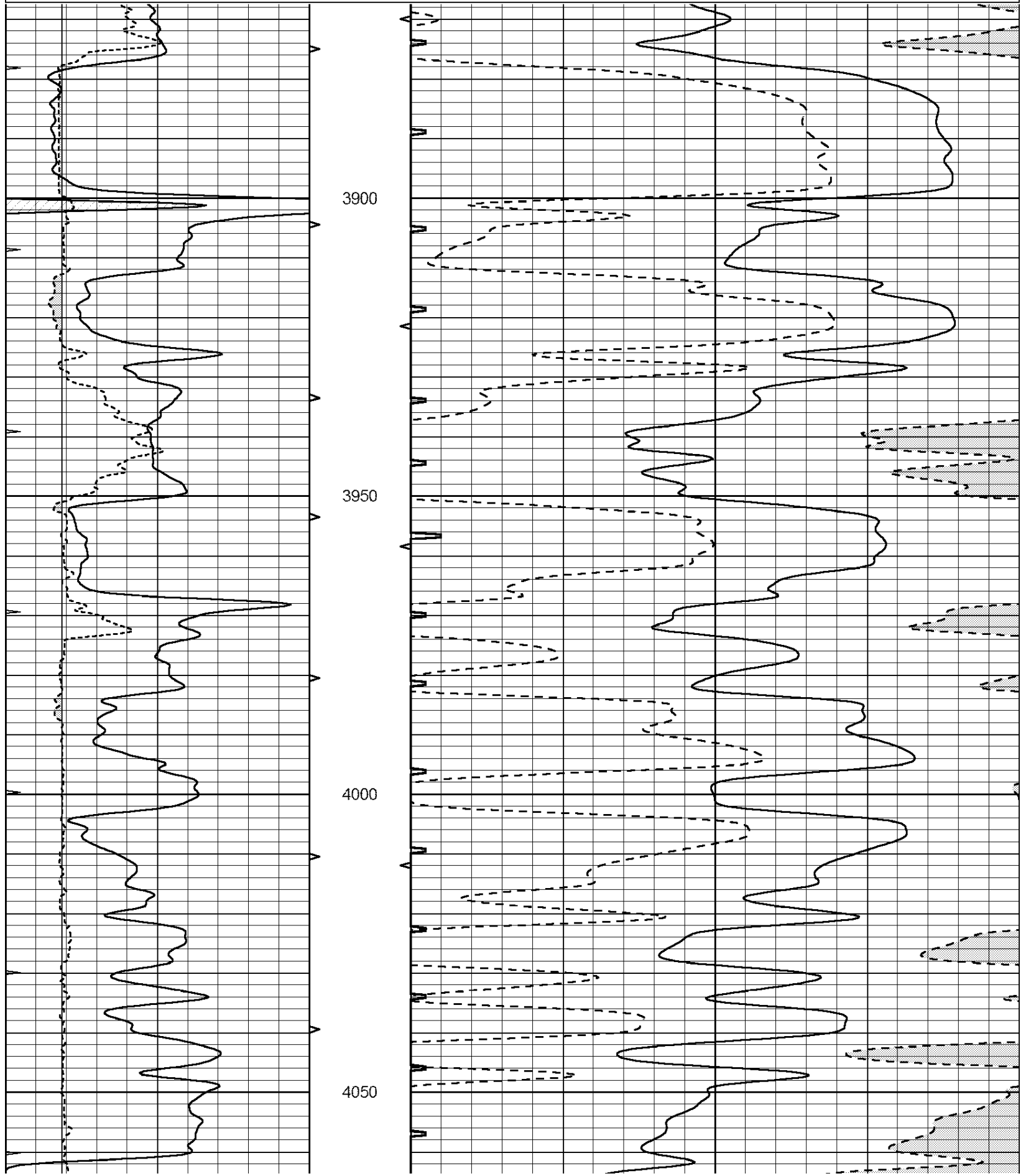


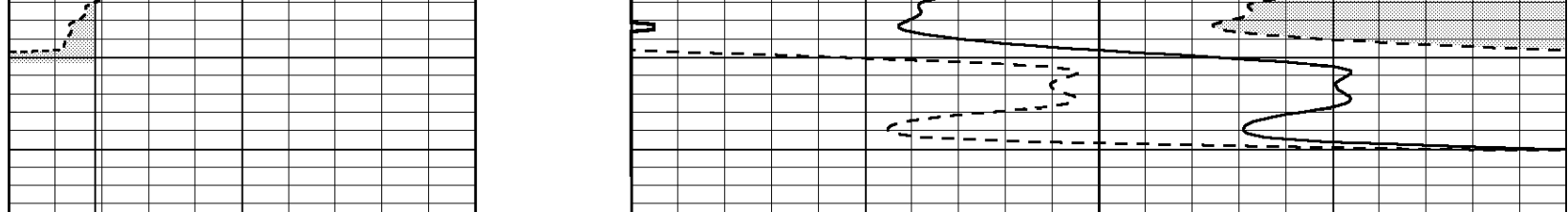


REPEAT SECTION

Database File: 25815pe.db
 Dataset Pathname: pass5.3
 Presentation Format: _slt
 Dataset Creation: Fri Sep 12 10:50:38 2014 by Calc Open-Cased 090629
 Charted by: Depth in Feet scaled 1:240

0	GAMMA RAY (GAPI)	150	ABHV	140	DELTA TIME (usec/ft)	40
6	MELCAL (in)	16	10 (ft3) 0	30	SONIC POROSITY (pu)	-10
0	MINMK	20	TBHV	0	ITT (msec)	20
			0 (ft3) 10			





0	GAMMA RAY (GAPI)	150	ABHV	140	DELTA TIME (usec/ft)	40
6	MELCAL (in)	16	10 (ft3) 0	30	SONIC POROSITY (pu)	-10
0	MINMK	20	TBHV	0	ITT (msec)	20
			0 (ft3) 10			