



Pioneer Energy Services

Microresistivity Log

15-101-22,524-00-00

API No.

Company Larson Engineering, Inc.

Well Shapland Trust # 1-21

Field Wildcat

County Lane State

Kansas

Location

NE-NW-SW-SE
1037' FSL & 2104' FEL

Sec: 21 Twp: 18S Rge: 28W

Permanent Datum Ground Level Elevation 2742
Log Measured From Kelly Bushing 7 Ft. Above Perm. Datum
Drilling Measured From Kelly Bushing

Other Services
CNL/CDL
DIL
Elevation
K.B. 2749
D.F.
G.L. 2742

Date	7/12/14	
Run Number	Two	
Depth Driller	4625	
Depth Logger	4622	
Bottom Logged Interval	4621	
Top Log Interval	3600	
Casing Driller	8.625 @ 263	
Casing Logger	260	
Bit Size	7.875	
Type Fluid in Hole	Chemical	
Salinity, ppm CL	3,500	
Density / Viscosity	9.2 53	
pH / Fluid Loss	9.5 10.4	
Source of Sample	Flowline	
Rm @ Meas. Temp	.17 @ 87	
Rmf @ Meas. Temp	.13 @ 87	
Rmc @ Meas. Temp	.23 @ 87	
Source of Rmf / Rmc	Charts	
Rm @ BHT	.12 @ 122	
Operating Rig Time	4 Hours	
Max Rec. Temp. F	122	
Equipment Number	91	
Location	Hays	
Recorded By	J. Hennickson	
Witnessed By	Vern Schrag	

<<< Fold Here >>>

All interpretations are opinions based on inferences from electrical or other measurements and we cannot and do not guarantee the accuracy or correctness of any interpretation, and we shall not, except in the case of gross or willful negligence on our part, be liable or responsible for any loss, costs, damages, or expenses incurred or sustained by anyone resulting from any interpretation made by any of our officers, agents or employees. These interpretations are also subject to our general terms and conditions set out in our current Price Schedule.

Comments

Thank you for using Pioneer Energy Services
www.pioneerres.com
785 625 3858

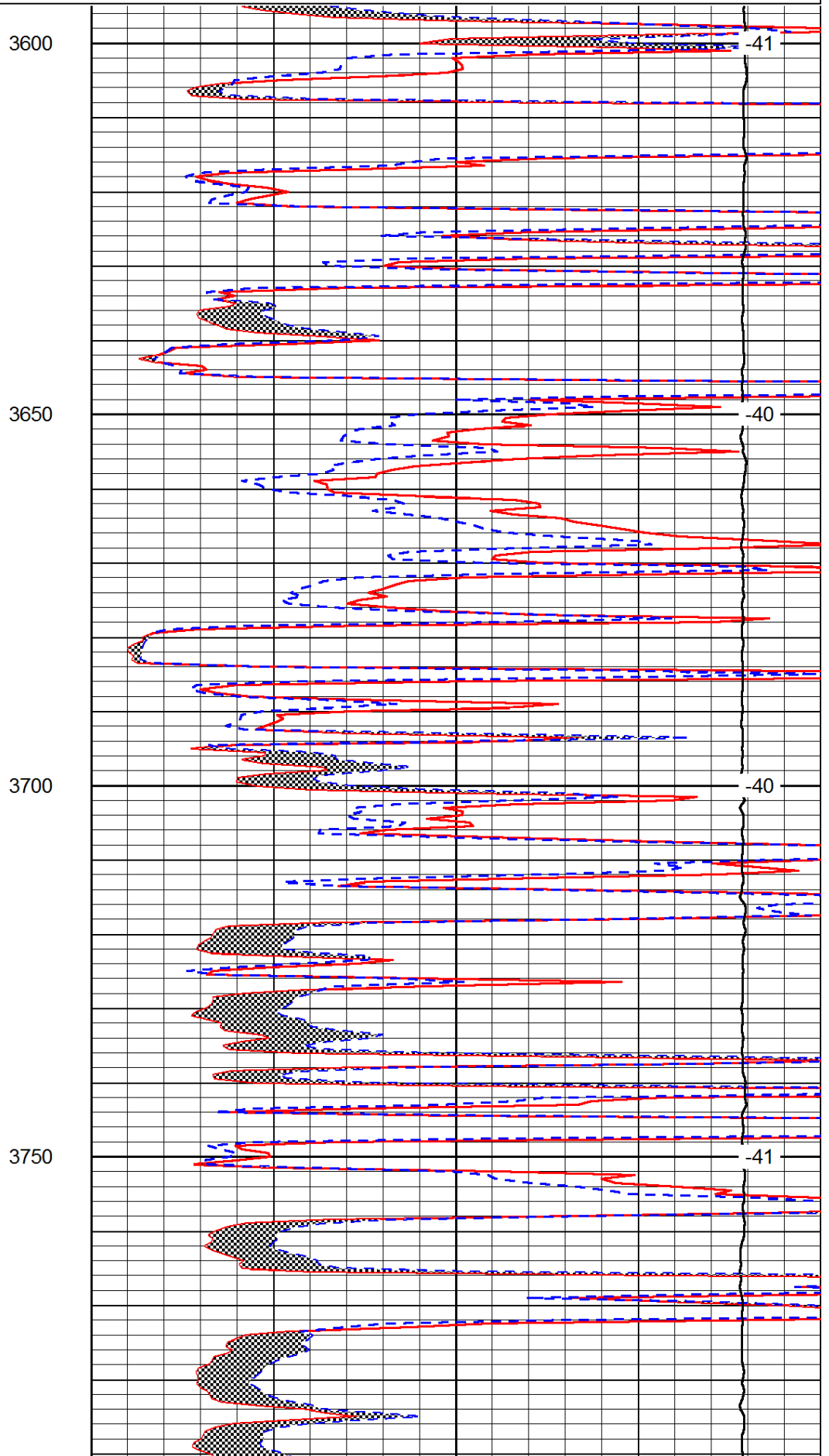
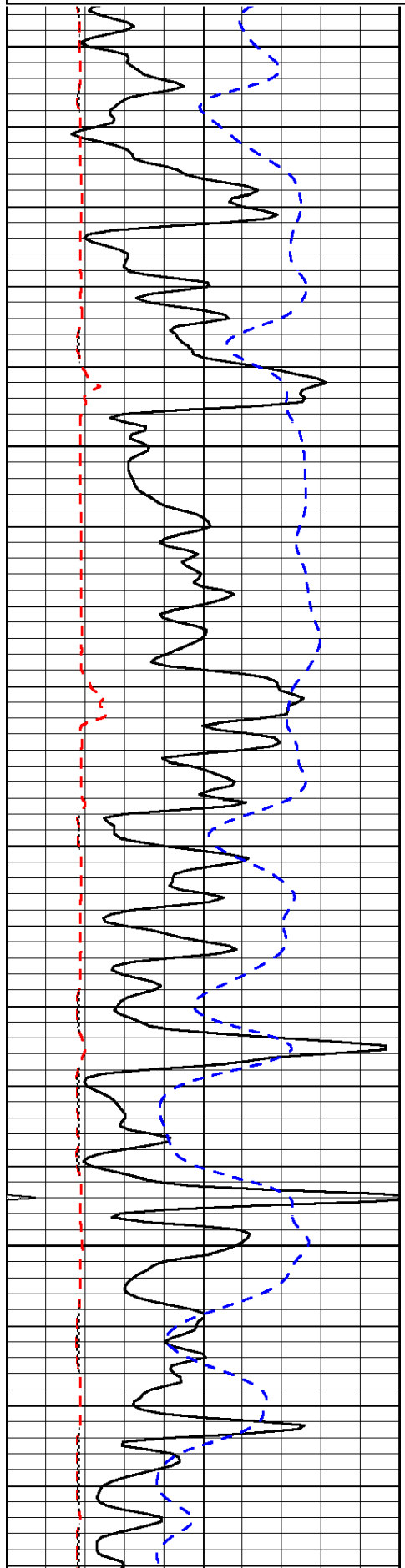
Dighton Kansas
2 East, 1 South, East Into

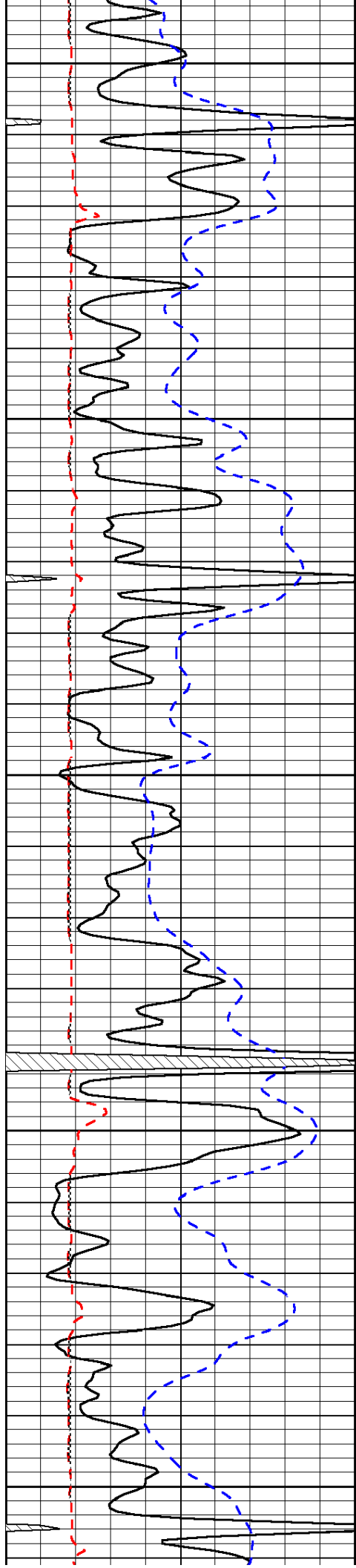
Database File: c:\warrior\data\larson_shapland trust # 1-21\larson_shapland_trust_1_21hd.db
Dataset Pathname: DIL\larstk
Presentation Format: micro
Dataset Creation: Sat Jul 12 17:42:44 2014
Charted by: Depth in Feet scaled 1:240

0	Gamma Ray	150
6	Micro Log Caliper (GAPI)	16
-200	SP (mV)	0

0	Micro Inverse 1 X 1	40
0	Micro Normal 2"	40
15000	Line Weight	0

LSPD





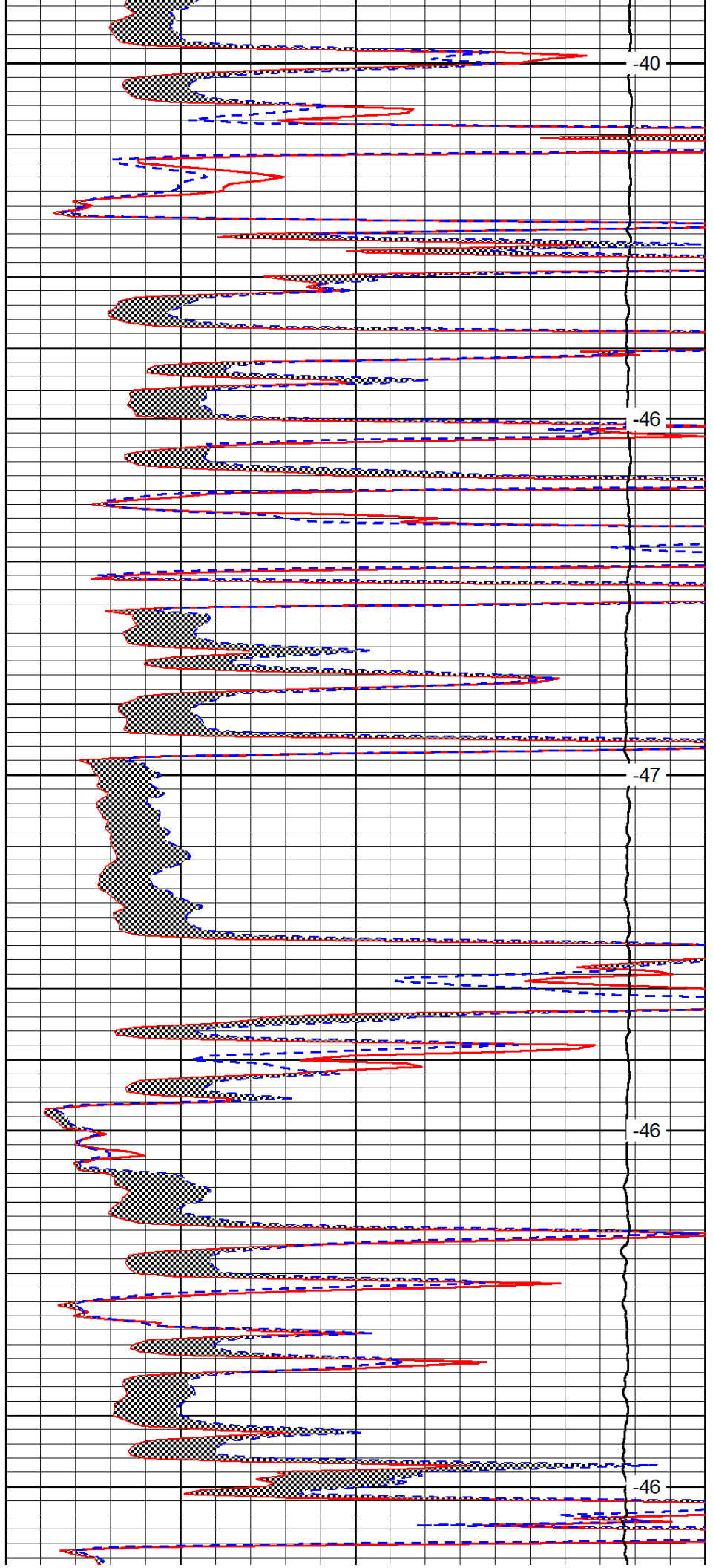
3800

3850

3900

3950

4000



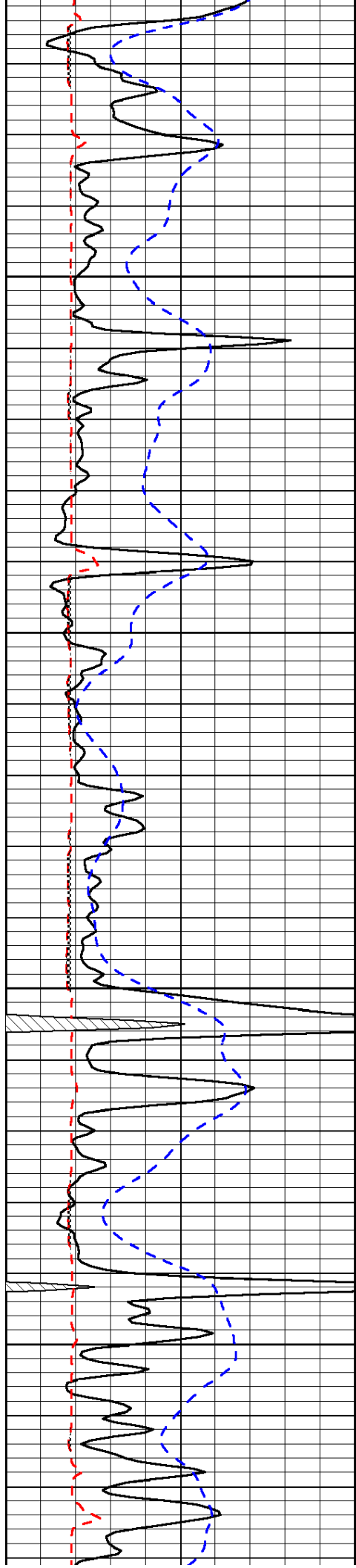
-40

-46

-47

-46

-46

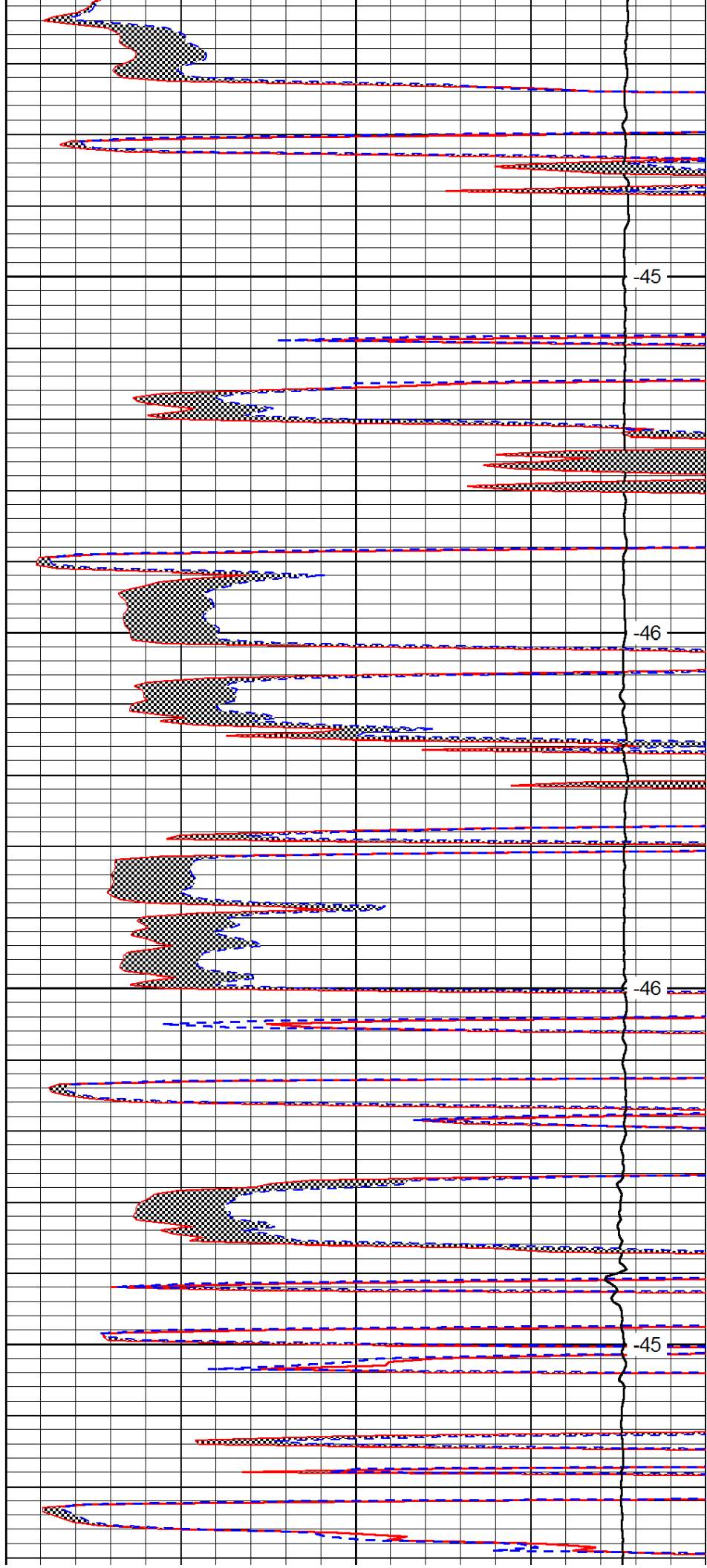


4050

4100

4150

4200

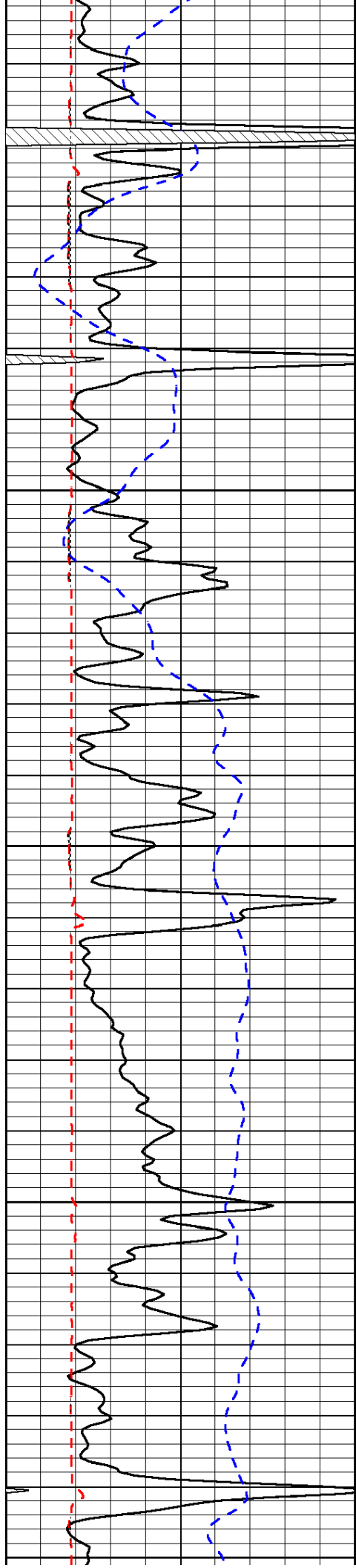


-45

-46

-46

-45



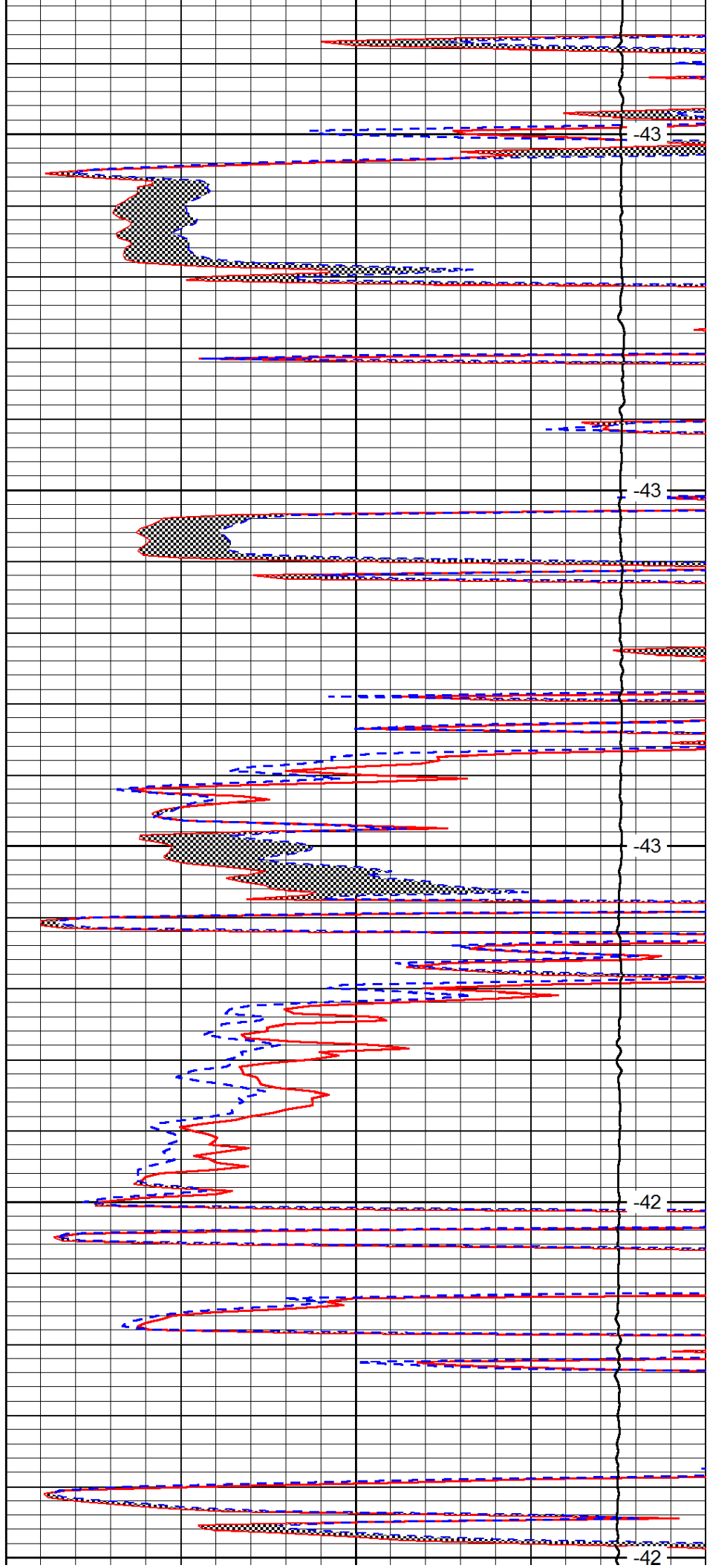
4250

4300

4350

4400

4450



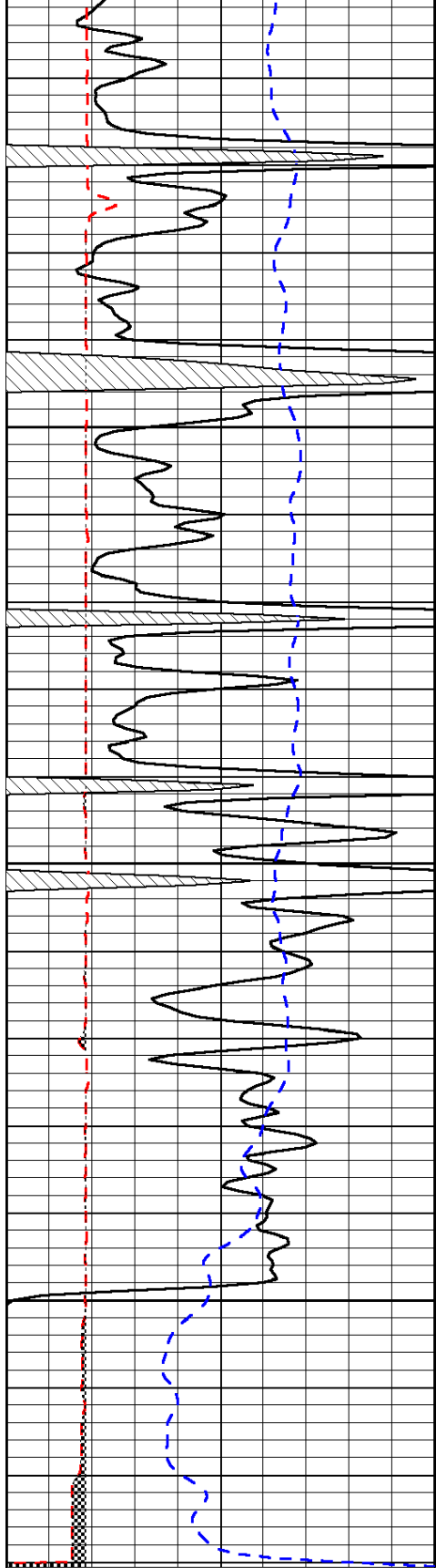
-43

-43

-43

-42

-42

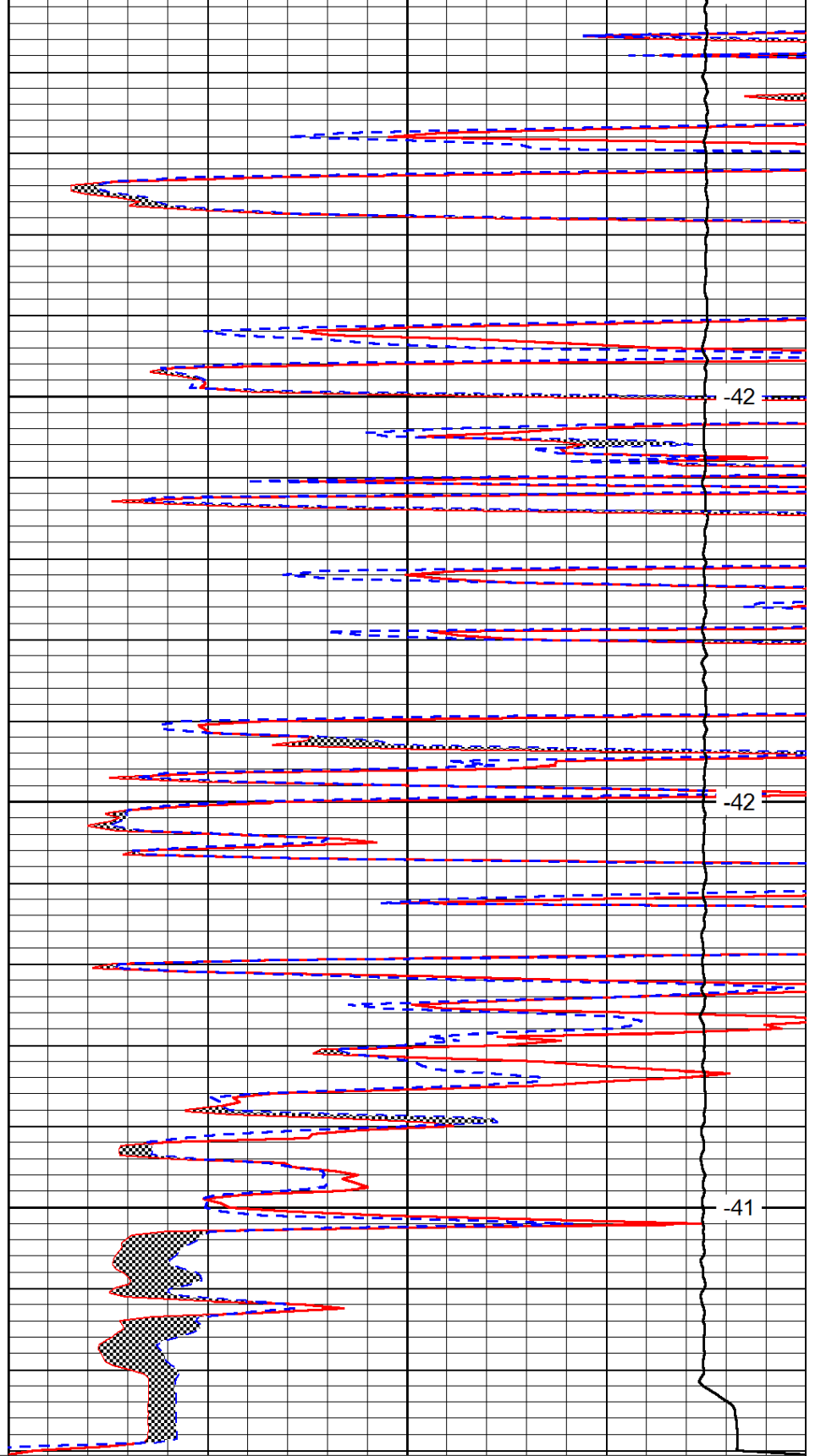


0	Gamma Ray	150
6	Micro Log Caliper (GAPI)	16
-200	SP (mV)	0

4500

4550

4600



0	Micro Inverse 1 X 1	40
0	Micro Normal 2''	40
15000	Line Weight	0

LSPD