



# DUAL RECEIVER CEMENT BOND LOG

Company: AMERICAN WARRIOR, INC.  
Well: WILLIAMS NO. 12  
Field: SCHABEN

County: NESS  
State: KANSAS

Location: 1507 FNL & 1809 FWL  
API #: 15-135-23904-0000

Well: WILLIAMS NO. 12  
Field: SCHABEN

Company: AMERICAN WARRIOR, INC.

Well: WILLIAMS NO. 12  
Field: SCHABEN

County: NESS  
State: KANSAS

Location: 1507 FNL & 1809 FWL  
API #: 15-135-23904-0000

Well: WILLIAMS NO. 12  
Field: SCHABEN

Company: AMERICAN WARRIOR, INC.

Well: WILLIAMS NO. 12  
Field: SCHABEN

County: NESS  
State: KANSAS

Location: 1507 FNL & 1809 FWL  
API #: 15-135-23904-0000

Well: WILLIAMS NO. 12  
Field: SCHABEN

Company: AMERICAN WARRIOR, INC.

Well: WILLIAMS NO. 12  
Field: SCHABEN

County: NESS  
State: KANSAS

Location: 1507 FNL & 1809 FWL  
API #: 15-135-23904-0000

Company	AMERICAN WARRIOR, INC.
Well	WILLIAMS NO. 12
Field	SCHABEN
County	NESS
State	KANSAS
Permitment Datum	SEC 36 TWP 19S RGE 21W
Log Measured From	GROUND LEVEL Elevation 2250
Drilling Measured From	KELLY BUSHING 8' A.G.L. G.L. 2250
Date	APRIL 7, 2016
Run Number	ONE
Depth (m)	4370
Bottom Log Depth (m)	4375
Top Log Interval	3200
Open Hole Size	WATER
Type Fluid	WATER
Temperature (Celsius)	///
Temperature (Fahrenheit)	///
Estimated Cement Top	3340
Time Well Ready	///
Time Logger on Bottom	///
Equipment Number	P1108
Recorded By	BOB KILAS
Witnessed By	SCOTT CORSHAN
Run Number	ONE
Bit	7/8" 2T
From	210
To	4370
Size	4 1/2"
Weight	///
Tubing Record	///
From	///
To	///
Casing Record	WVRF
Top	00
Bottom	228
Production String	///
Production String	5 1/2"
Line	4375

<<< Fold Here >>>

All interpretations are opinions based on inferences from electrical or other measurements and we cannot and do not guarantee the accuracy or correctness of any interpretation, and we shall not, except in the case of gross or willful negligence on our part, be liable or responsible for any loss, costs, damages, or expenses incurred or sustained by anyone resulting from any interpretation made by any of our offices, agents or employees. These interpretations are also subject to our general terms and conditions set out in our current Price Schedule.

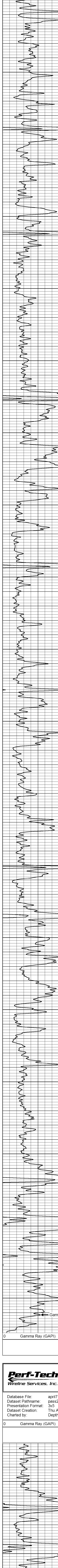
## Comments

THANK YOU FOR USING  
PERF-TECH WIRELINE SERVICES, INC.  
785-628-3969

DIRECTIONS: BAZINE, KS.  
SOUTH to 70 Rd,  
1/2 WEST, SOUTH into

## MAIN PASS

Database File: april71606.db  
Dataset Pathname: pass3  
Presentation Format: 3x5  
Dataset Creation: Thu Apr 07 10:03:35 2016 by Log SCH 111116  
Charted by: Depth in Feet scaled 1:240



0 150 Gamma Ray (GAPI)

0 100 200 3' AMPLITUDE (mV)

0 475 9 3' TRAVEL TIME (usec) 235

Collar Locator -1



0 150 Gamma Ray (GAPI)

0 100 200 3' AMPLITUDE (mV)

0 475 9 3' TRAVEL TIME (usec) 235

Collar Locator -1

5' Variable Density 1100

## REPEAT SECTION

Database File: april71606.db  
Dataset Pathname: pass2  
Presentation Format: 3x5  
Dataset Creation: Thu Apr 07 09:59:52 2016 by Log SCH 111116  
Charted by: Depth in Feet scaled 1:240

0 150 Gamma Ray (GAPI)

0 100 200 3' AMPLITUDE (mV)

0 475 9 3' TRAVEL TIME (usec) 235

Collar Locator -1



5' Variable Density 1100