



**MIDWEST SURVEYS**  
 LOGGING - PERFORATING - CONSULTING SERVICES  
 P.O. Box 66, Osawatomie, KS 66064  
 913.755.2128

**GAMMA RAY / NEUTRON / CCL**

File No. \_\_\_\_\_

Company **Reusch Well Service, Inc.**

Well **McConnell No. WI-3**

Field **Paola - Rantoul**

County **Franklin** State **Kansas**

Location **5230 FSL & 930' FEL**

Other Services **Perforate**

Sec. 18 Typ. 16s Rge. 21e Elevation NA

Perforant Datum GL

Log Measured From GL

Drilling Measured From GL

Date **6-07-2006**

Run Number **One**

Depth Driller **850.0**

Depth Logger **771.0**

Bottom Logged Interval **769.0**

Top Log Interval **20.0**

Fluid Level **Full**

Type Fluid **Water**

Density / Viscosity **NA**

Salinity - PPM Cl **NA**

Max Recorded Temp **NA**

Estimated Cement Top **0.0**

Equipment No. **104** Location **Osawatimie**

Recorded By **Steve Wandsch**

Witnessed By **Bob Reusch**

**BORE-HOLE RECORD**

BIT FROM TO SIZE WGT. FROM TO

No. **9 7/8"** **0.0** **20.0** **7.0"** **0.0** **20.0**

Two **5 5/8"** **20.0** **850.0** **2.7 7/8"** **0.0** **771.0**

**CASING RECORD**

TO FROM TO

**20.0**

**771.0**

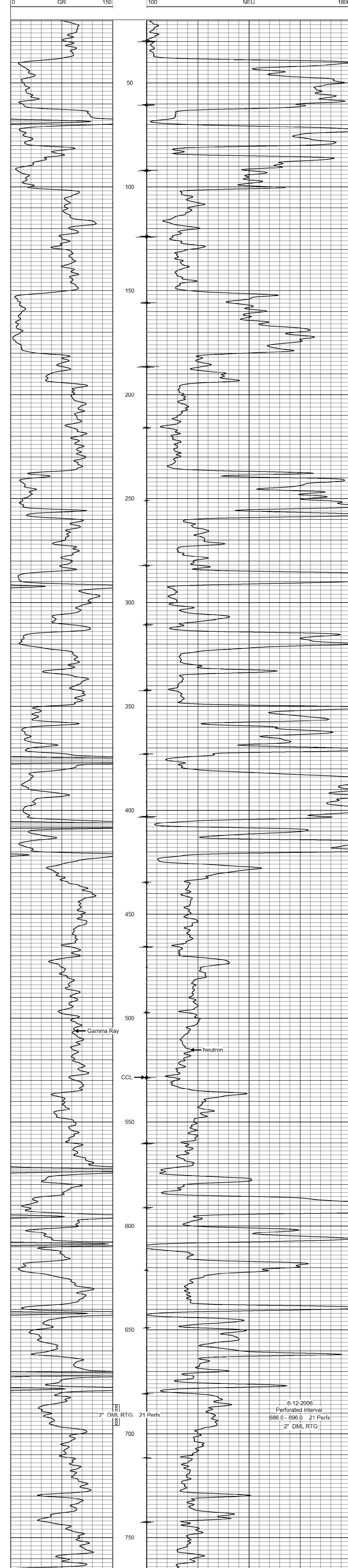
<<< Fold Here >>>

All interpretations are opinions based on inferences from electrical or other measurements and we cannot and do not guarantee the accuracy or correctness of any interpretation, and we shall not, except in the case of gross or willful negligence on our part, be liable or responsible for any loss, costs, damages, or expenses incurred or sustained by anyone resulting from any interpretation made by any of our officers, agents or employees. These interpretations are also subject to our general terms and conditions set out in our current Price Schedule.

**Comments**

Drilling Contractor :  
**Evans Energy & Development, Inc.**

Database File: **mcon13w.db**  
 Dataset Pathname: **pass1**  
 Presentation Format: **gr-n-ccl**  
 Dataset Creation: **Wed Jun 07 10:19:08 2006 by Log 6.2\_B4**  
 Charted by: **Depth in Feet scaled 1:240**



6-12-2006  
 Perforated Interval  
 686.0 - 696.0 21 Perfs  
 2" DML RTG

2" DML RTG  
 21 Perfs