



DUAL INDUCTION LOG

Company AMERICAN WARRIOR, INC.
 Well NAIRN NO. 1-26
 Field WILDCAT
 County STANTON
 State KANSAS

Company AMERICAN WARRIOR, INC.
 Well NAIRN NO. 1-26
 Field WILDCAT
 County STANTON State KANSAS

Location: API #: 15-187-21328-00-00
 1,859' FSL & 1,942' FWL
 SEC 26 TWP 28S RGE 41W
 Permanent Datum GROUND LEVEL Elevation 3354'
 Log Measured From KELLY BUSHING
 Drilling Measured From KELLY BUSHING
 Other Services
 CNL/CDL
 MEL
 Elevation
 K.B. 3366'
 D.F. N/A
 G.L. 3354'

Date	5/31/2016
Run Number	ONE
Depth Driller	5650'
Depth Logger	5654'
Bottom Logged Interval	5653'
Top Log Interval	1700'
Casing Driller	8.625" @ 1745'
Casing Logger	1744'
Bit Size	7.875"
Type Fluid in Hole	CHEMICAL
Salinity, ppm CL	900
Density / Viscosity	9.3 59
pH / Fluid Loss	10.0 8.8
Source of Sample	FLOWLINE
Rm @ Meas. Temp	1.02 @ 68
Rmt @ Meas. Temp	.77 @ 68
Rmc @ Meas. Temp	1.38 @ 68
Source of Rmf / Rmc	CHARTS
Rm @ BHT	.52 @ 133
Operating Rig Time	3 HOURS
Max Rec. Temp. F	133 DEG F.
Equipment Number	108
Location	COLBY
Recorded By	J. LONG
Witnessed By	KEVIN TIMSON

<<< Fold Here >>>

All interpretations are opinions based on inferences from electrical or other measurements and Pioneer Wireline Services, LLC cannot and does not guarantee the accuracy or correctness of any interpretation, and Pioneer Wireline Services, LLC will not be liable or responsible for any loss, costs, damages, or expenses incurred or sustained by anyone resulting from any interpretation made by any of our officers, agents or employees.

Comments

N/A DENOTES NOT AVAILABLE OR NON-APPLICABLE.
 JOHNSON CITY, HIGHWAY 27 AND ROAD 12 INTERSECTION, 1 WEST, 1/2 NORTH,
 EAST INTO

Log Measured From: KELLY BUSHING 12 Ft. Above Permanent Datum

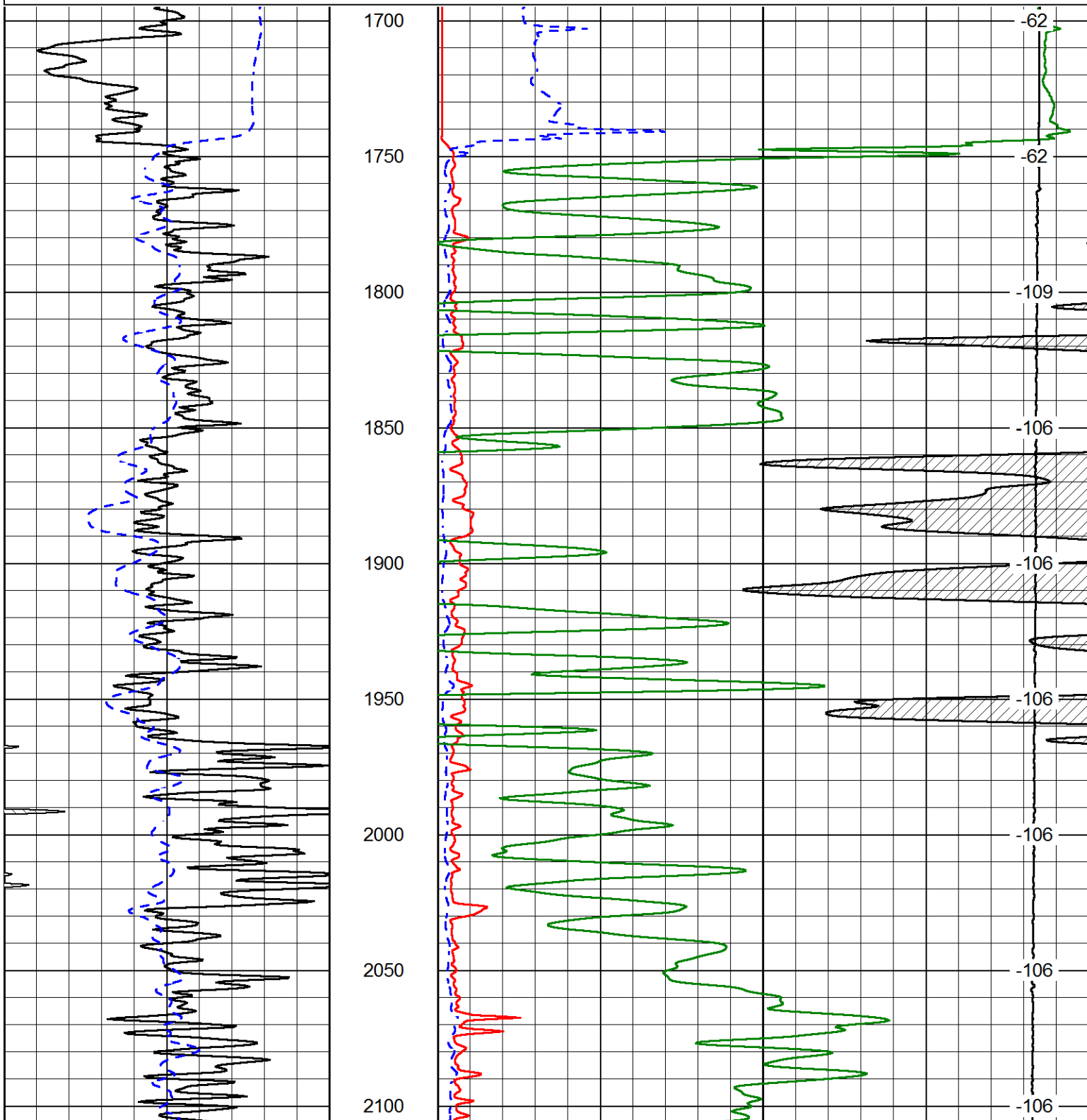
THANK YOU FOR USING PIONEER ENERGY SERVICES
www.pioneerenergy.com 785-625-3858

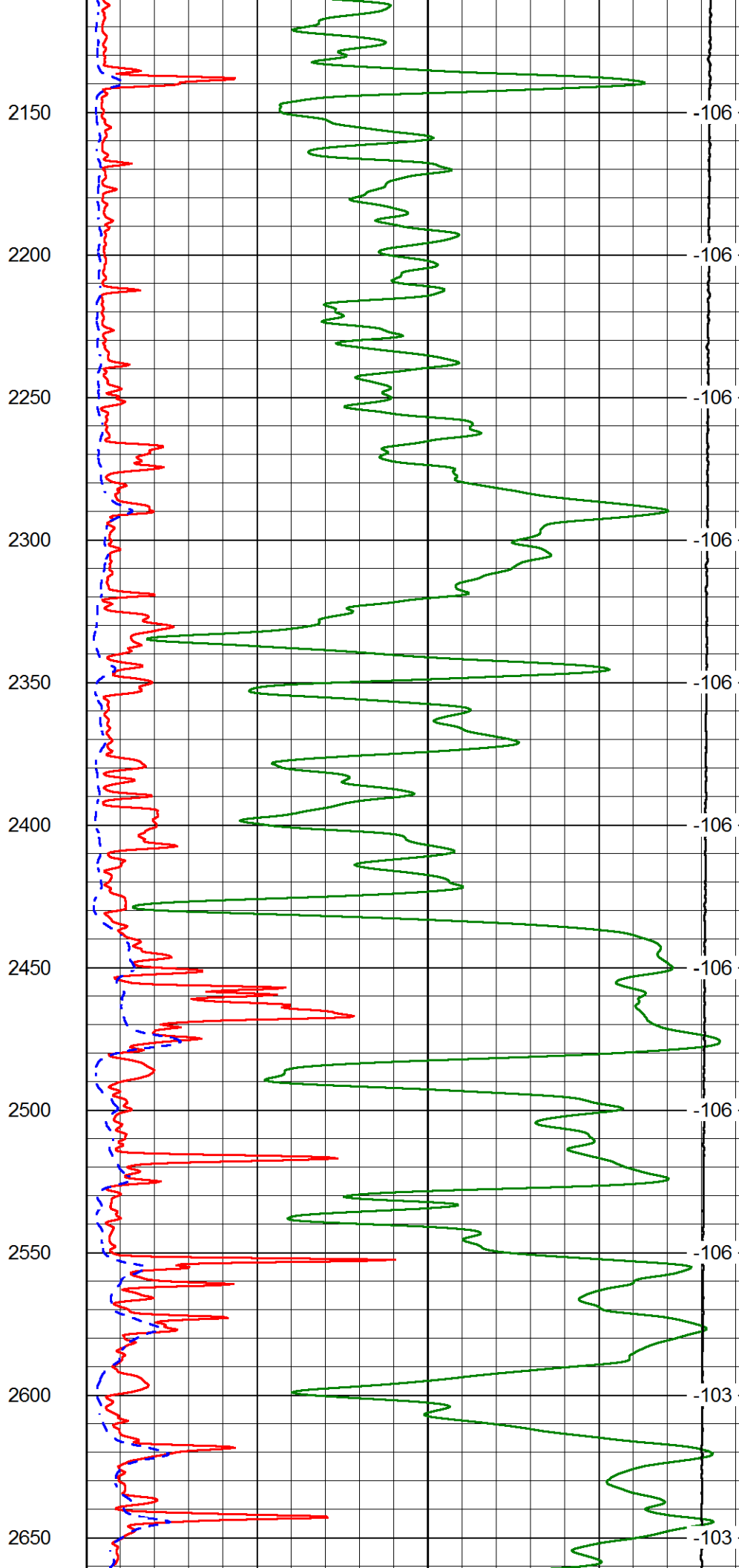
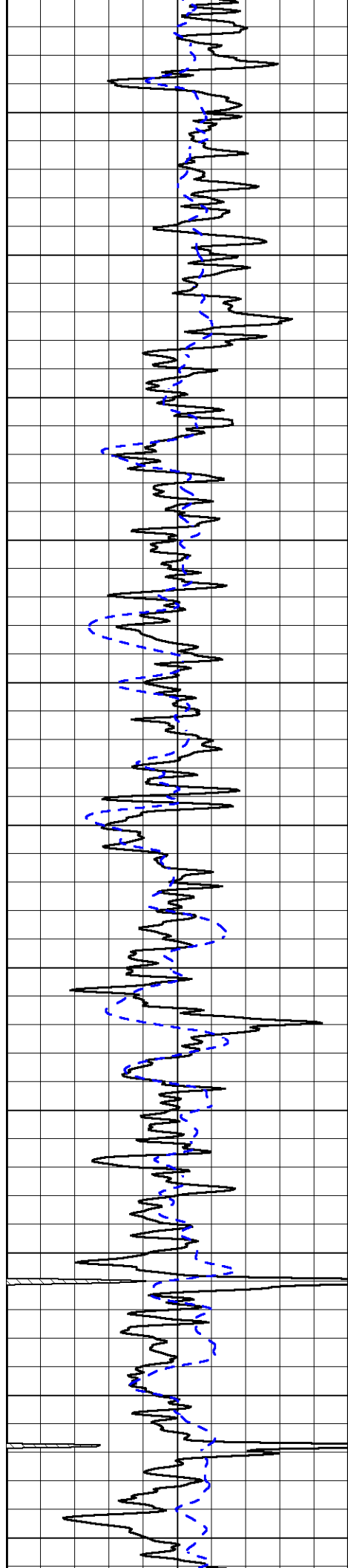
Your Pioneer Energy Services Crew	This Log Record Was Witnessed By
Engineer: J. LONG	Primary Witness: KEVIN TIMSON
Operator:	Secondary Witness:
Operator:	Secondary Witness:
Operator: J. HENRICKSON	Secondary Witness:

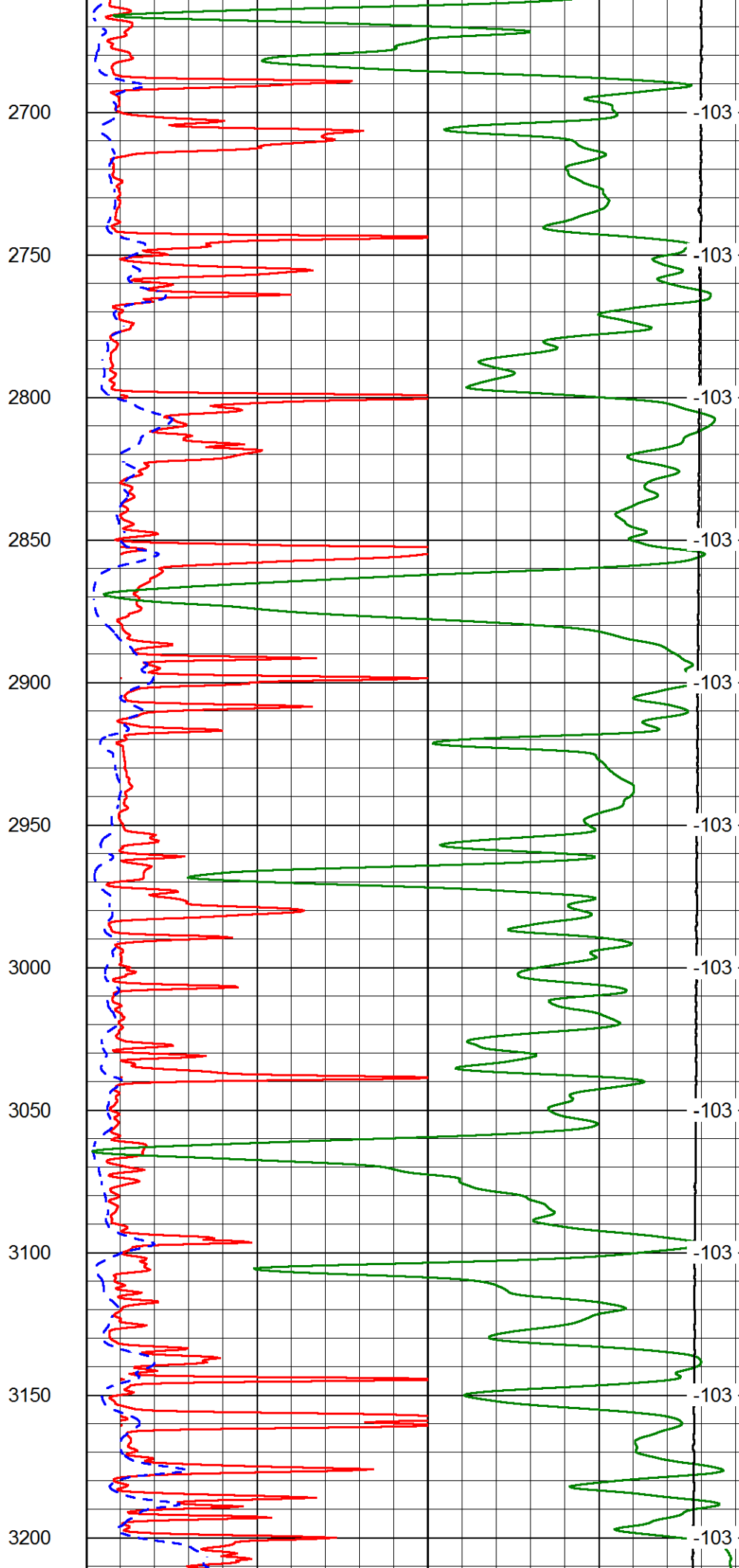
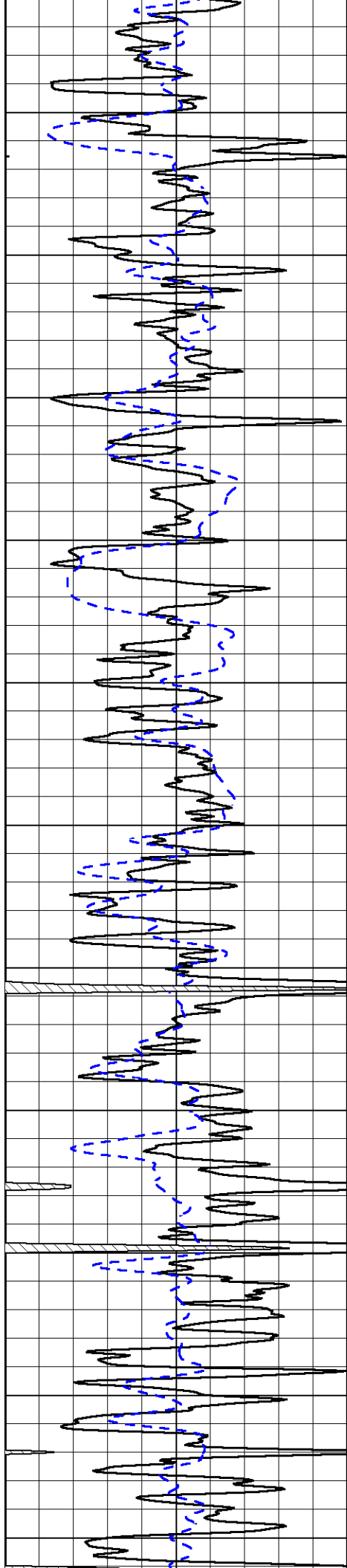
Database File amwar_nairn_#1-26\americanwarrior_nairn_1-26hd.db
 Dataset Pathname DIL/awstck
 Presentation Format dil2in
 Dataset Creation Wed Jun 01 09:53:58 2016
 Charted by Depth in Feet scaled 1:600

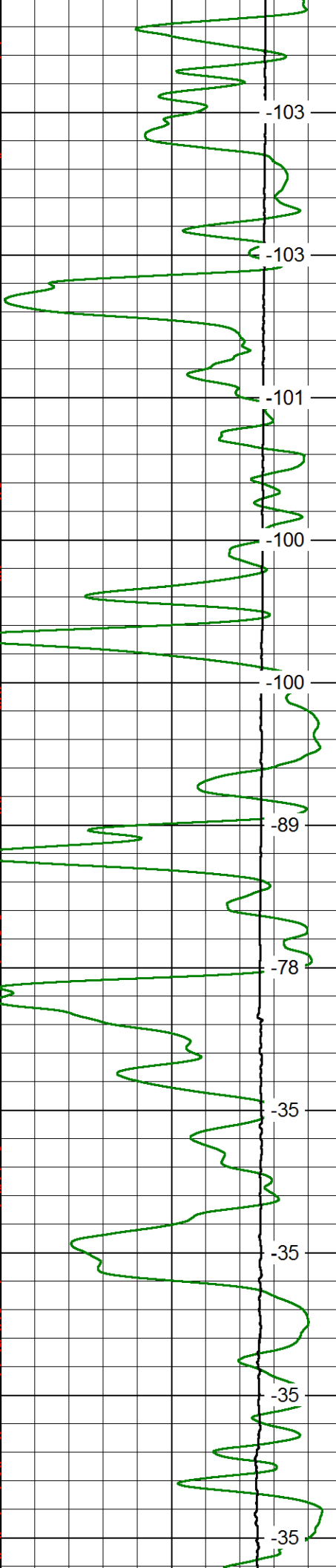
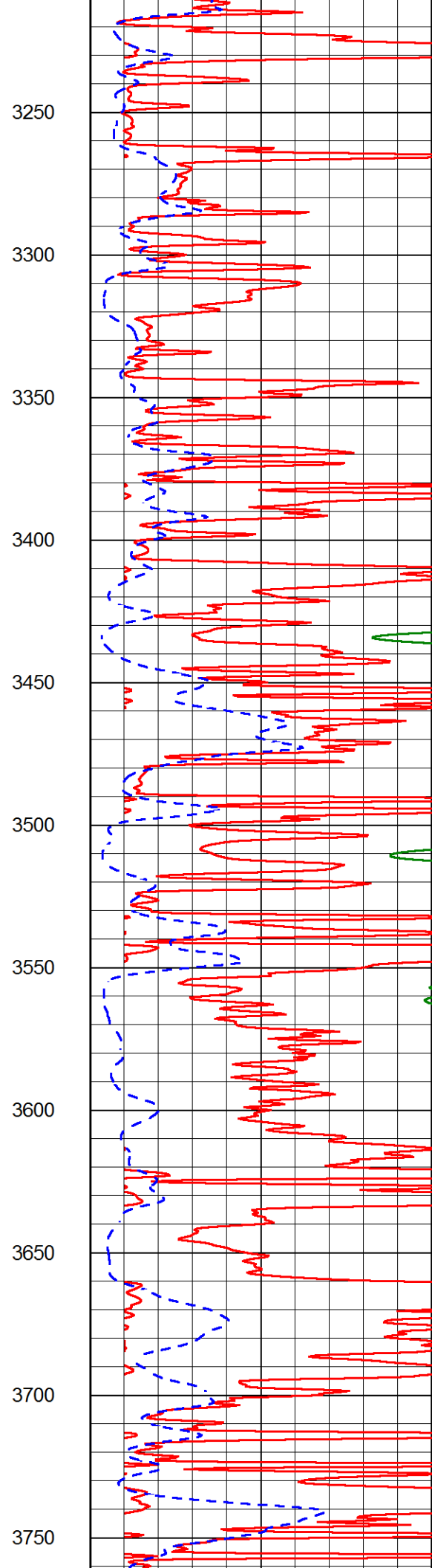
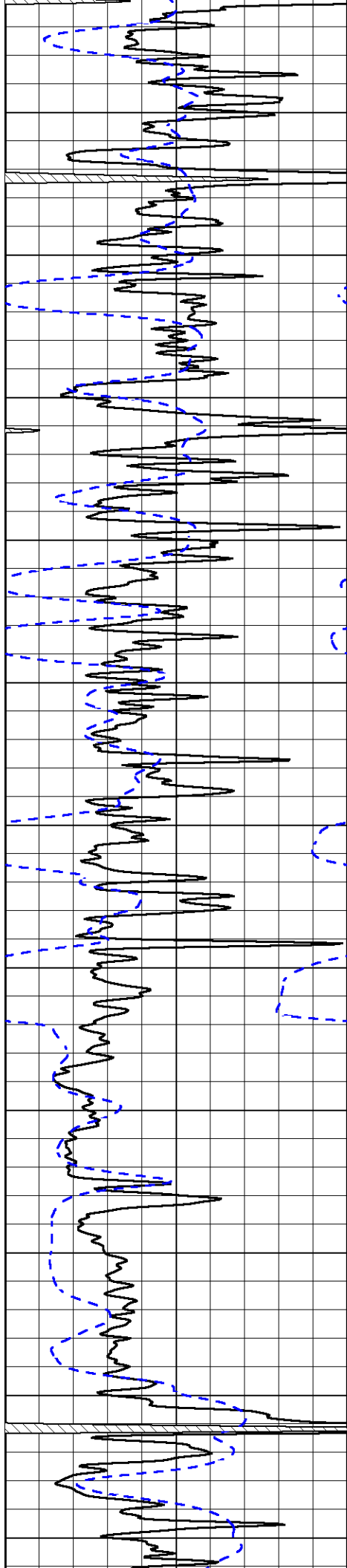
0 Gamma Ray (GAPI) 150
 -200 SP (mV) 0

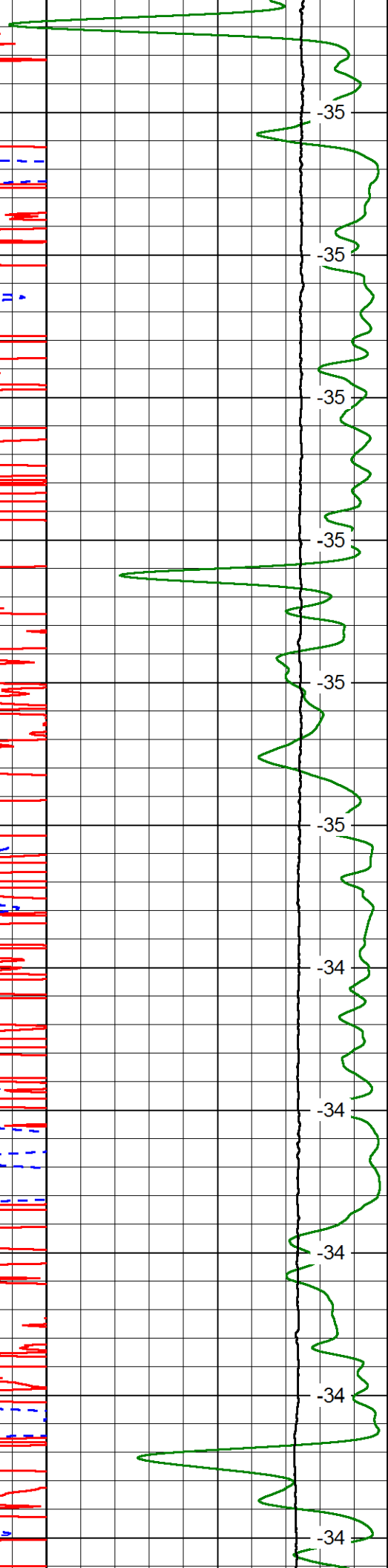
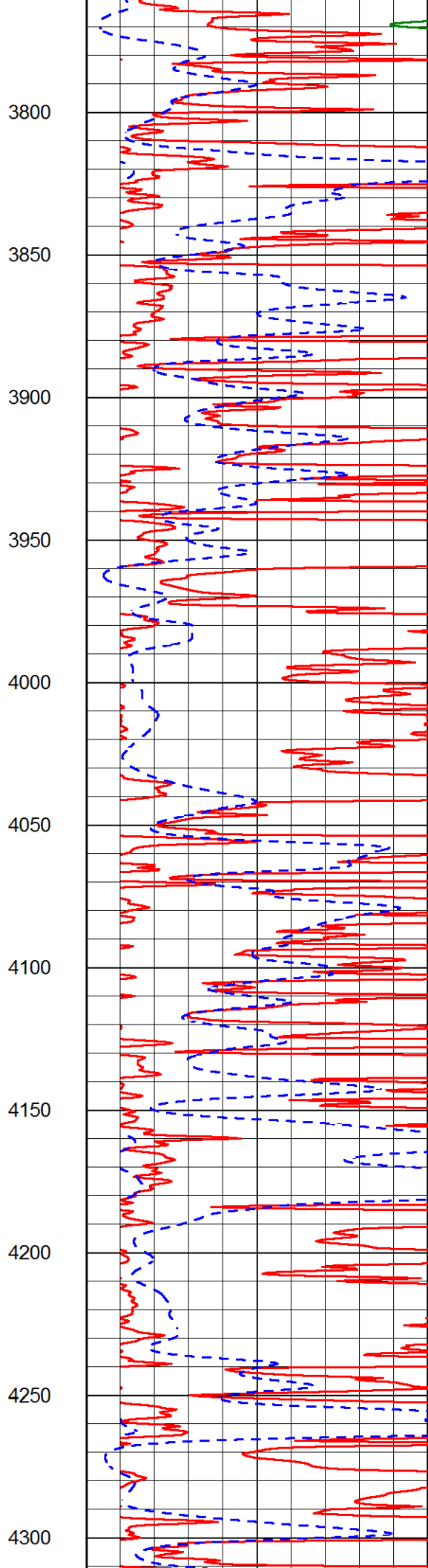
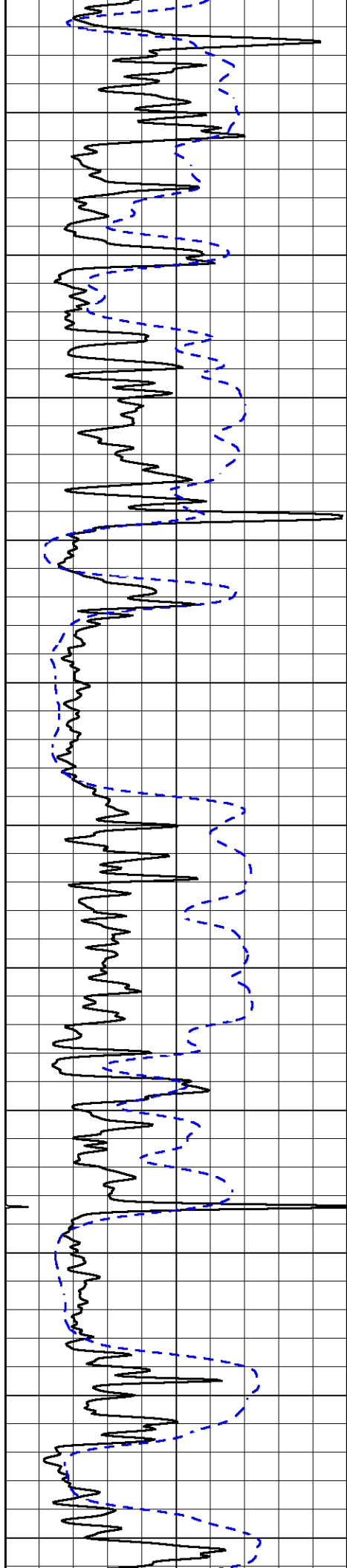
1000 Conductivity 0
 15000 Line Tension (lb) 0
 0 Shallow Resistivity (Ohm-m) 50 LSPD (ft/min)
 0 Deep Resistivity (Ohm-m) 50
 Shallow Resistivity (Ohm-m) 500
 50 Deep Resistivity (Ohm-m) 500

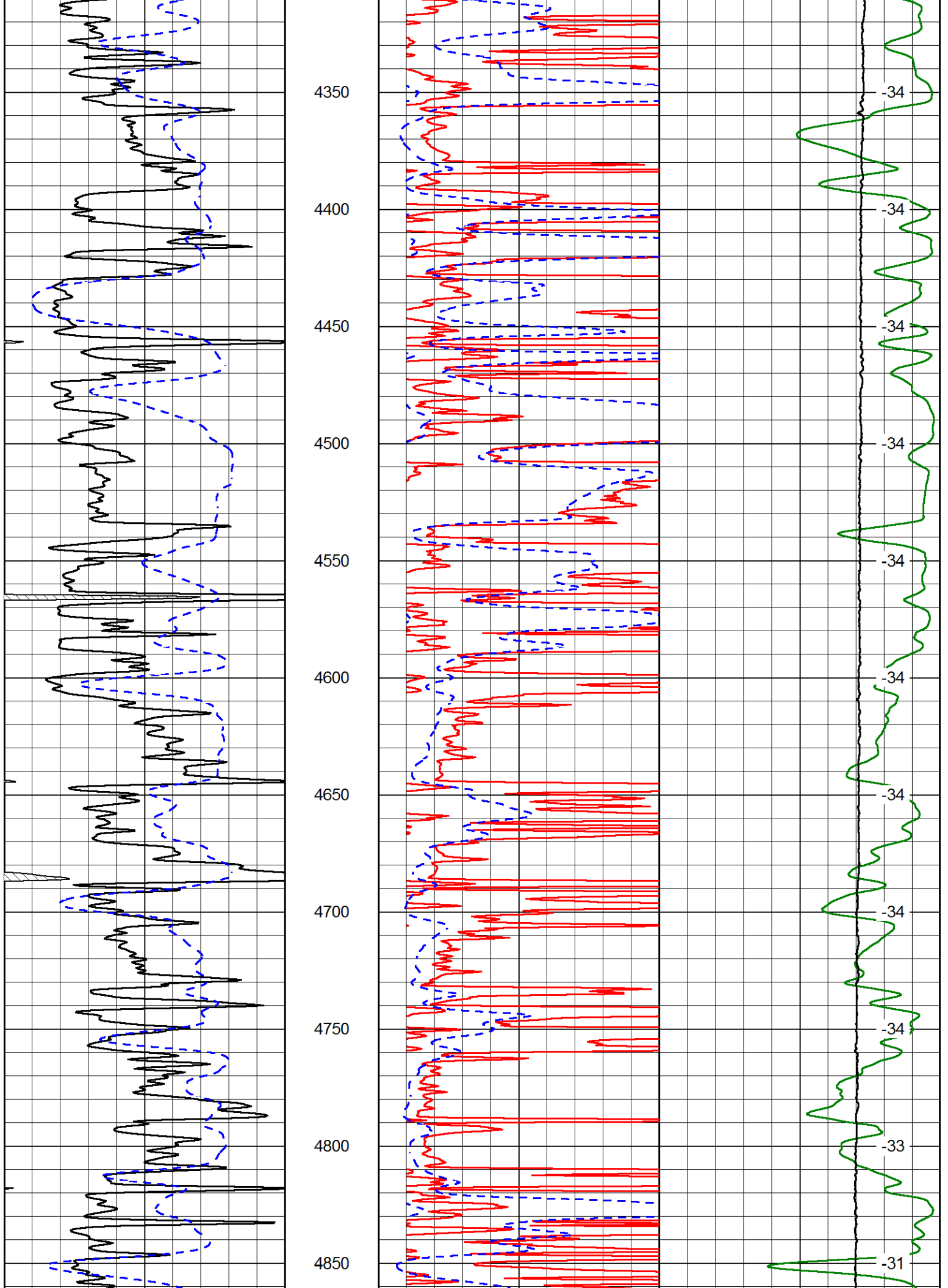


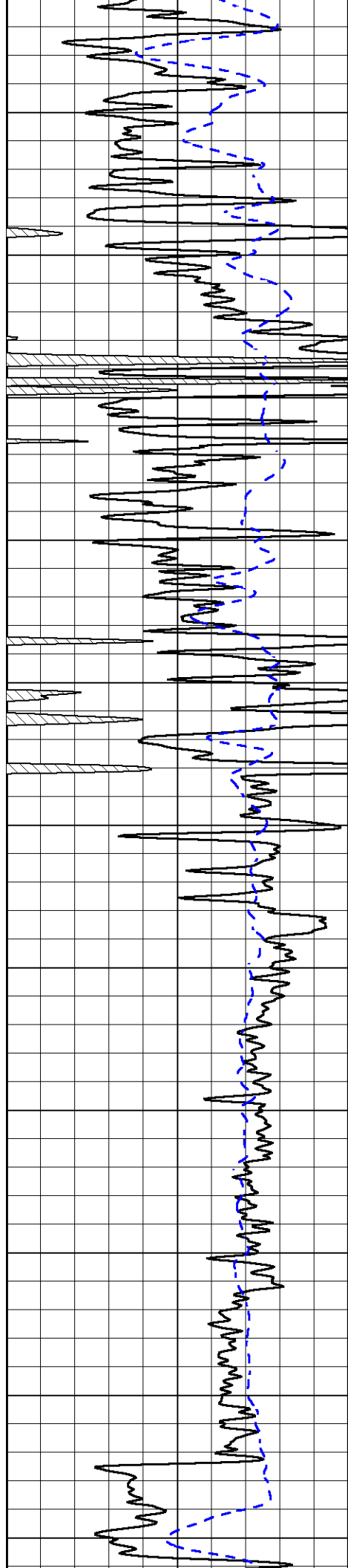












4900

4950

5000

5050

5100

5150

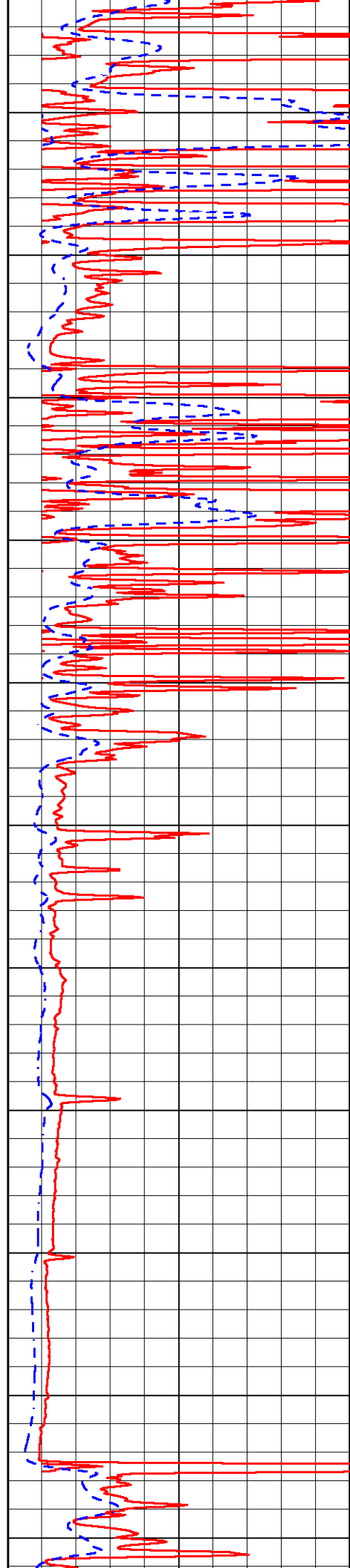
5200

5250

5300

5350

5400



-31

-31

-31

-31

-31

-31

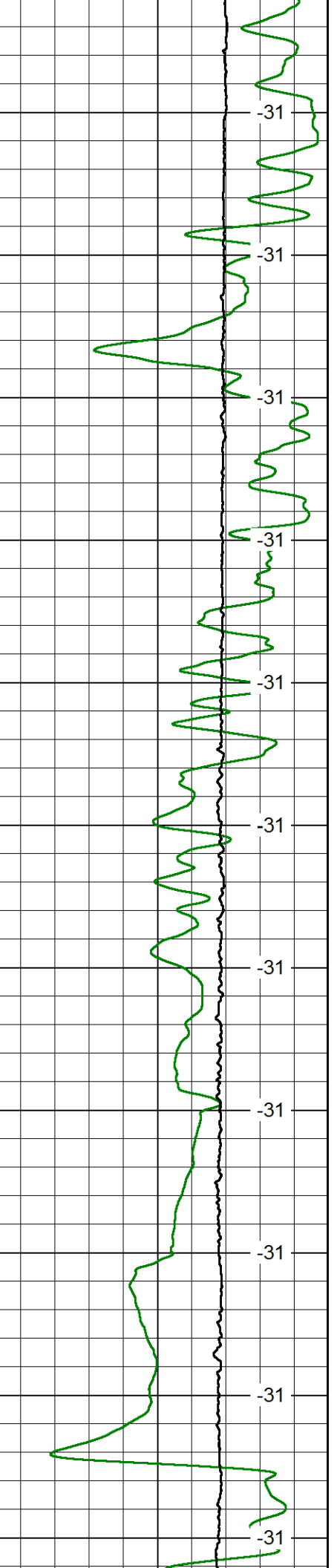
-31

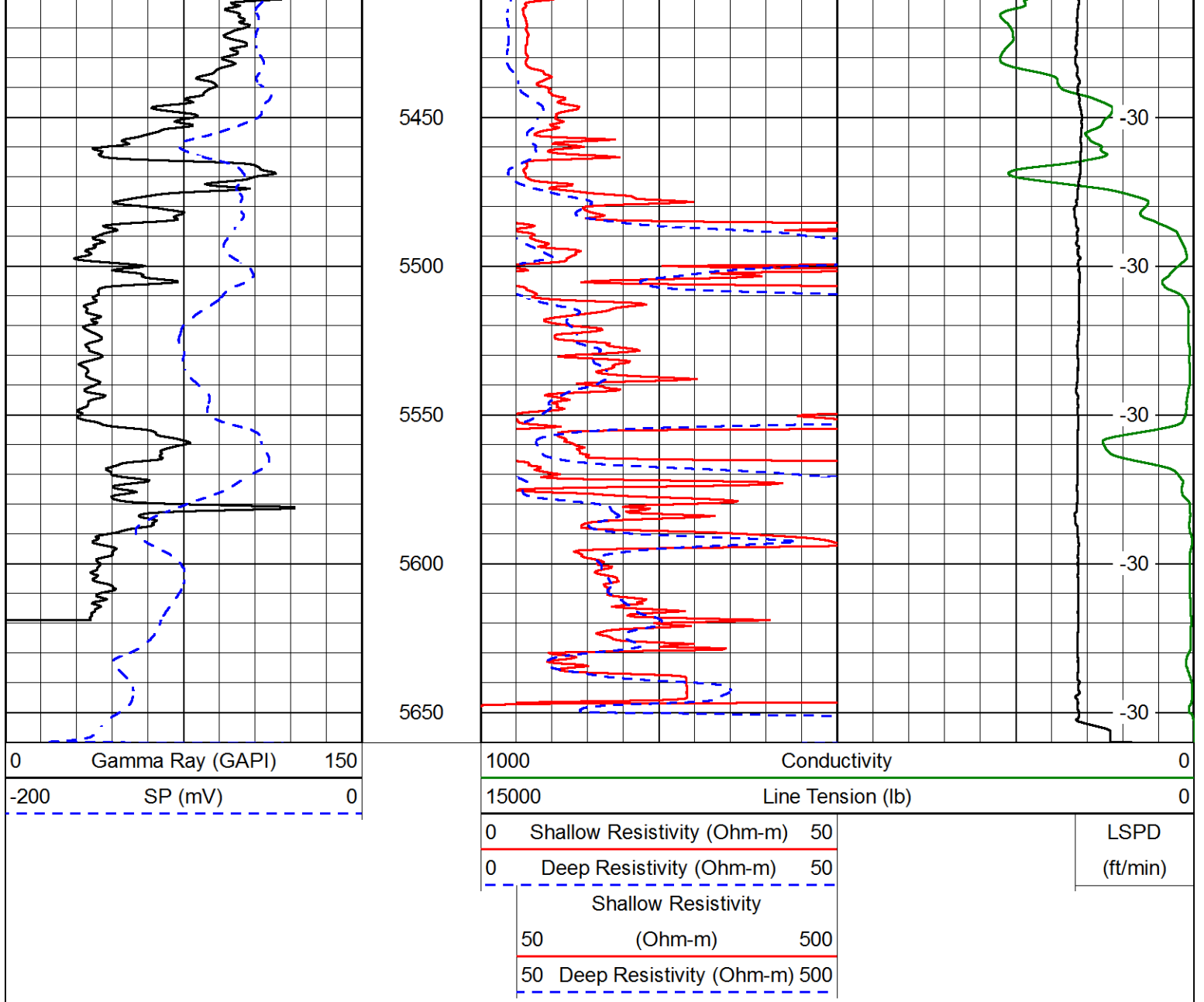
-31

-31

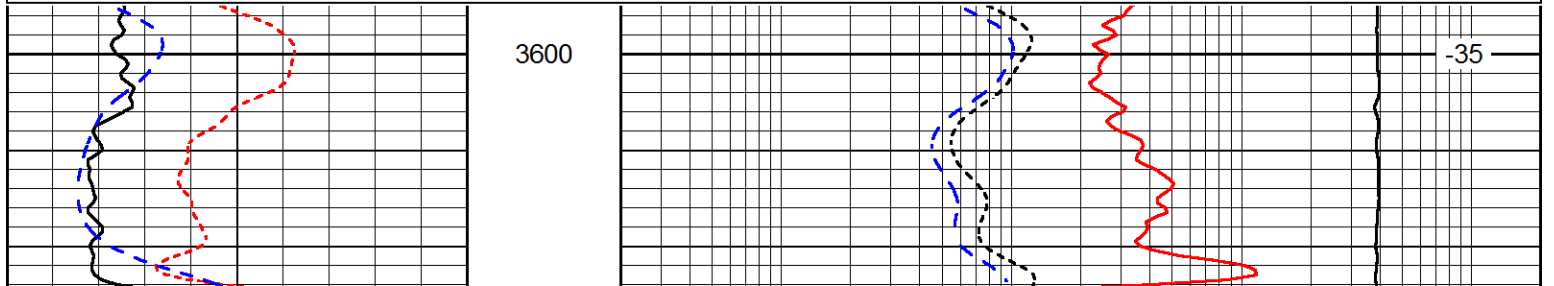
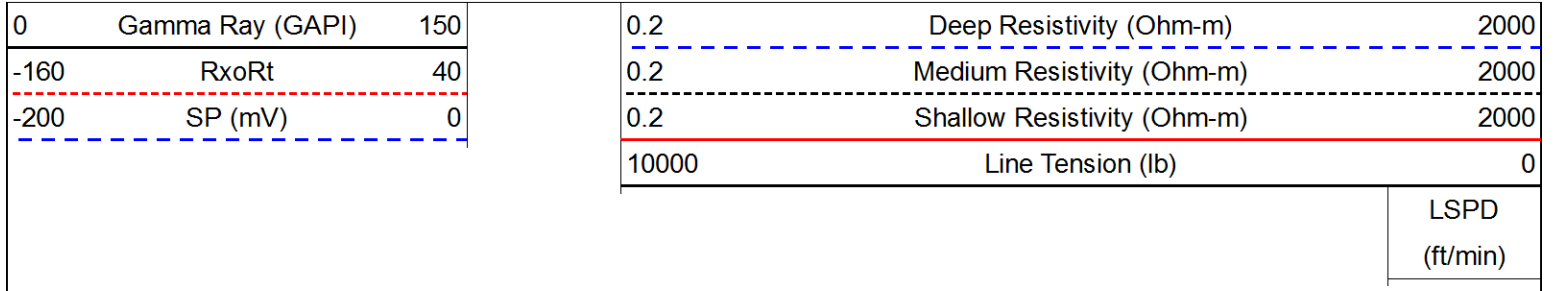
-31

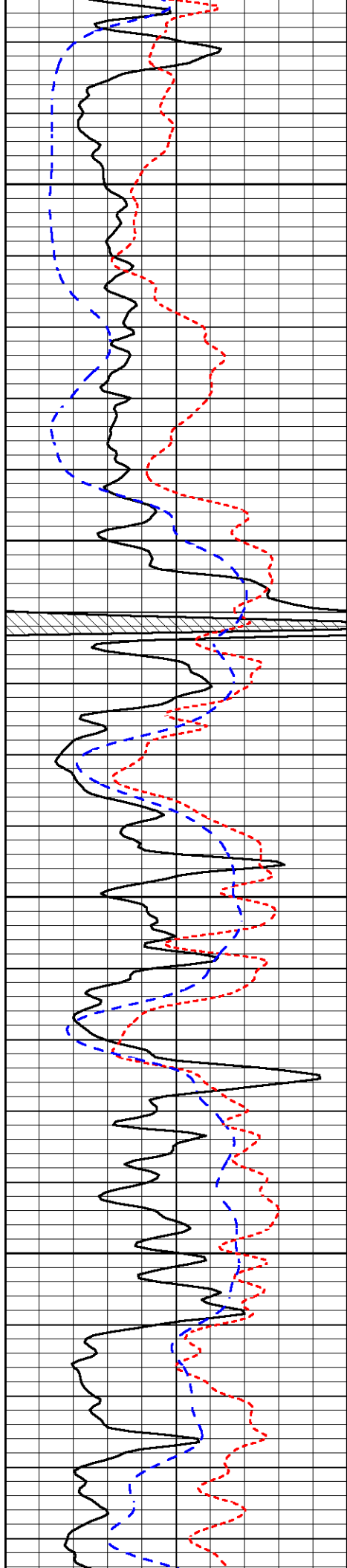
-31





Database File	amwar_nairn_#1-26\americanwarrior_nairn_1-26hd.db
Dataset Pathname	DIL/awstck
Presentation Format	dil
Dataset Creation	Wed Jun 01 09:53:58 2016
Charted by	Depth in Feet scaled 1:240



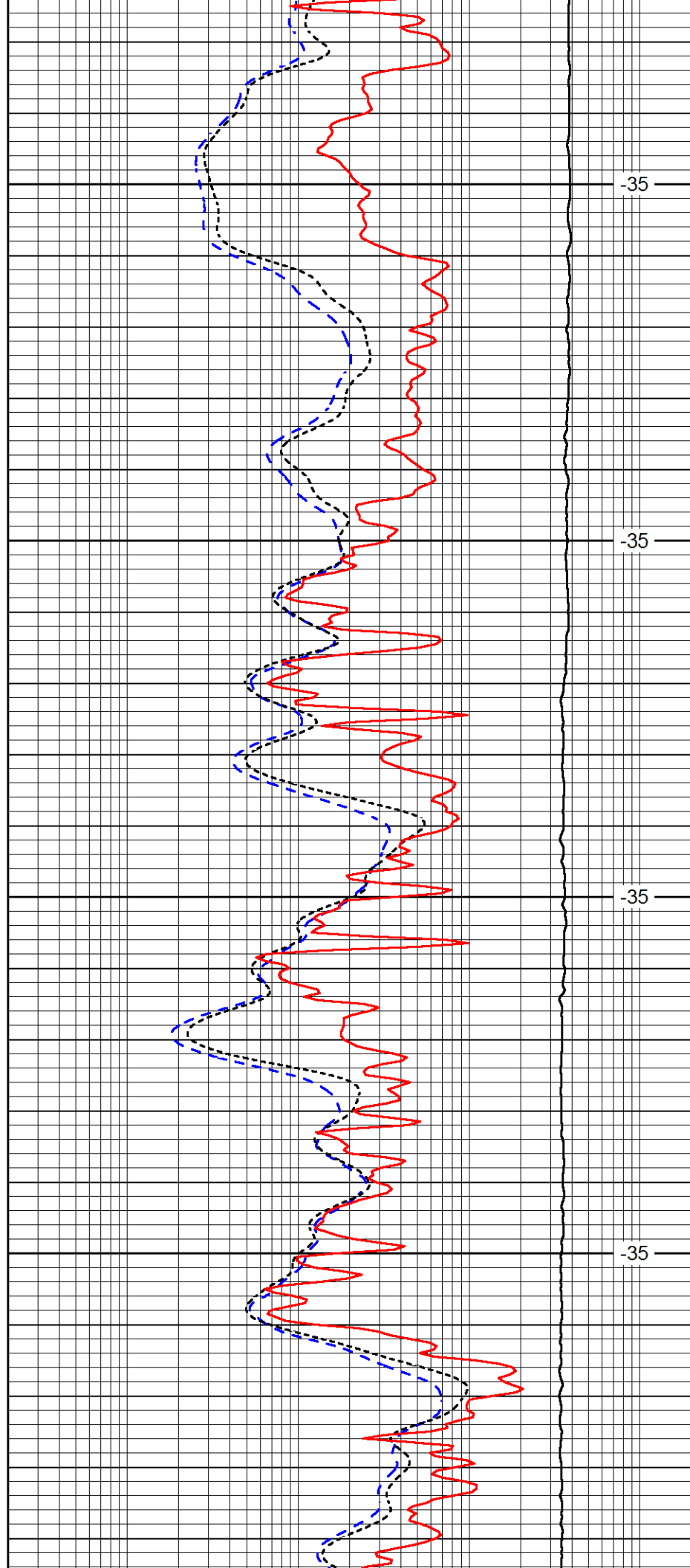


3650

3700

3750

3800

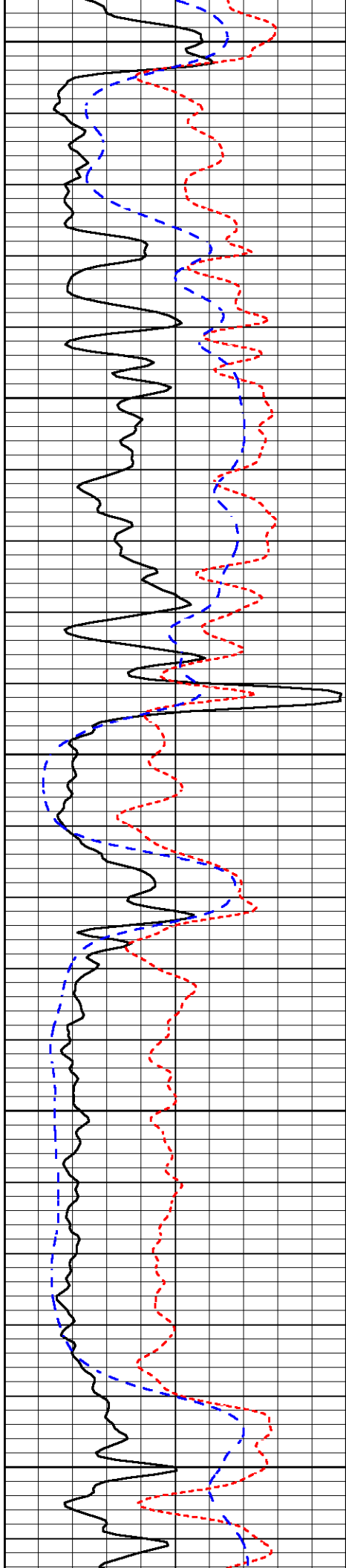


-35

-35

-35

-35



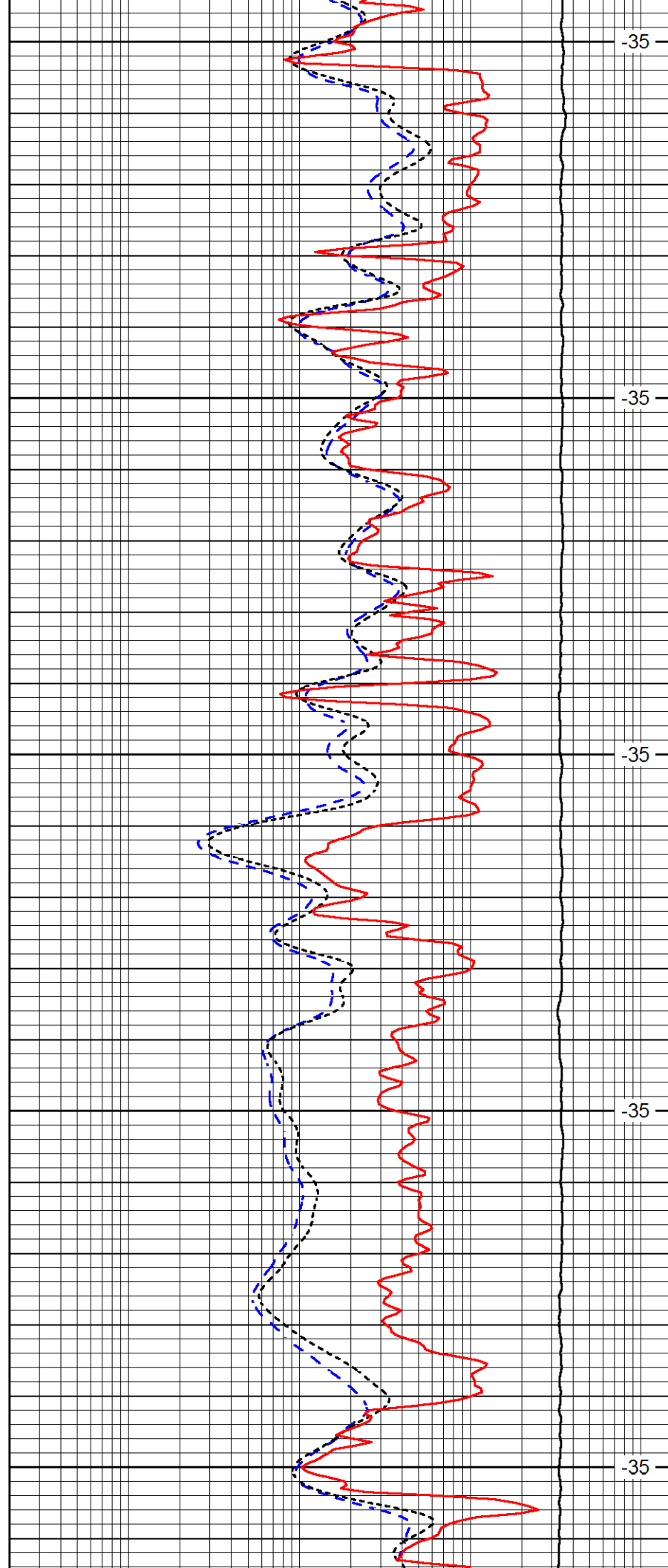
3850

3900

3950

4000

4050



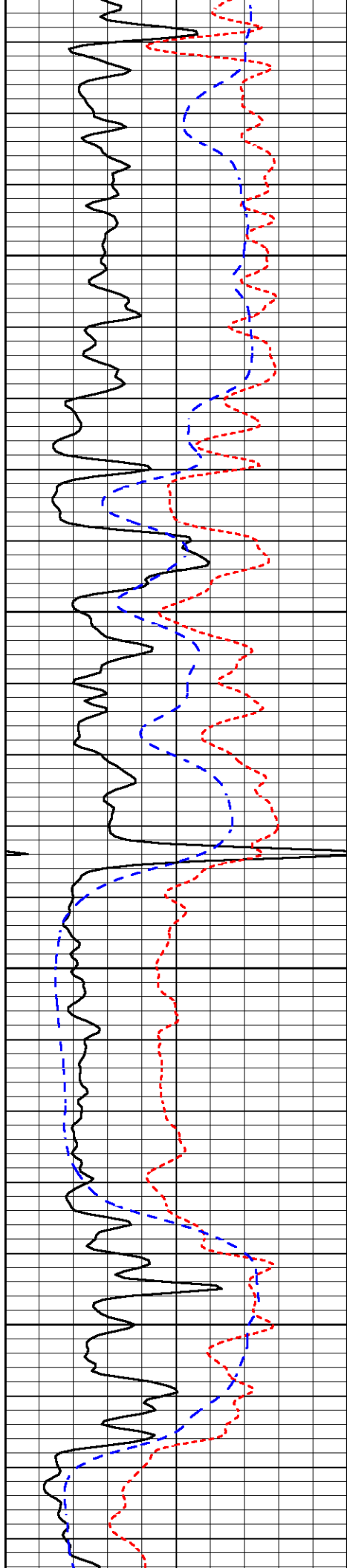
-35

-35

-35

-35

-35

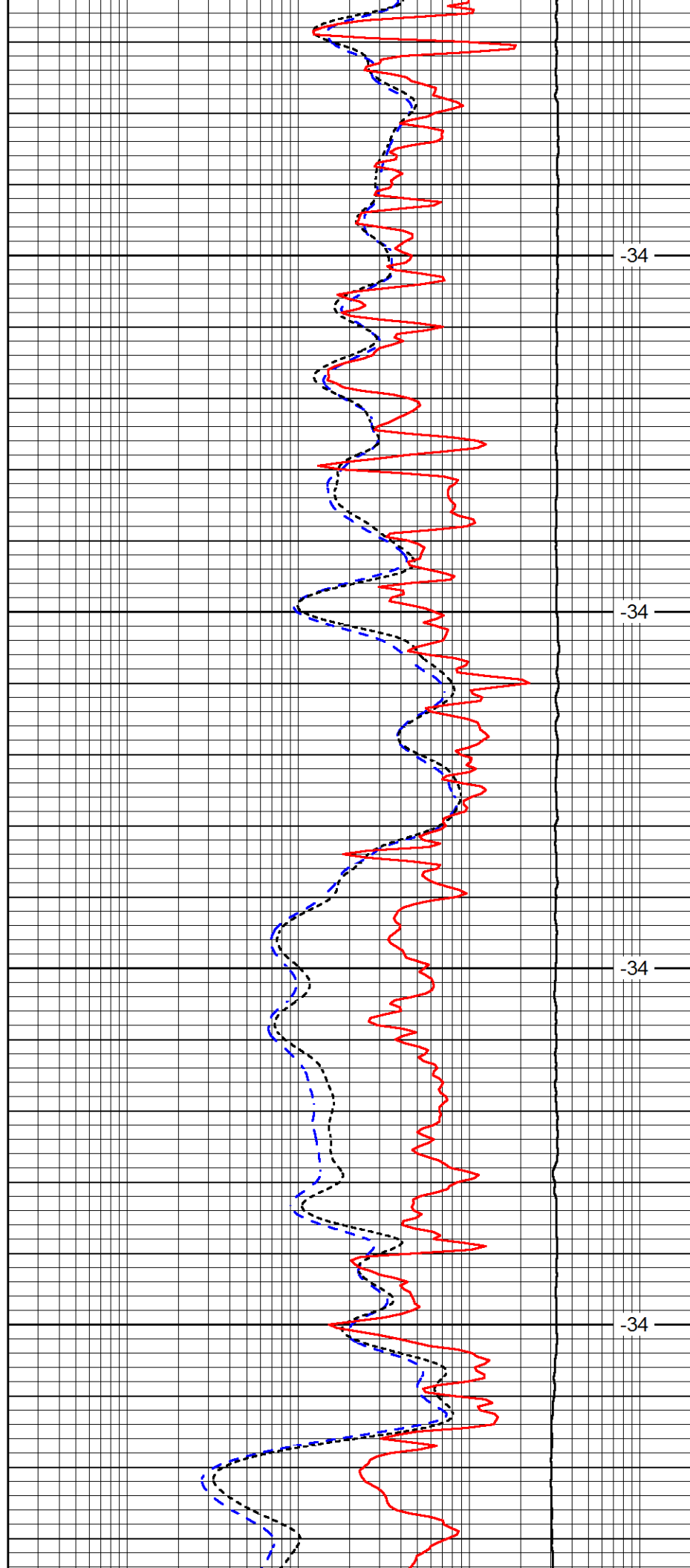


4100

4150

4200

4250

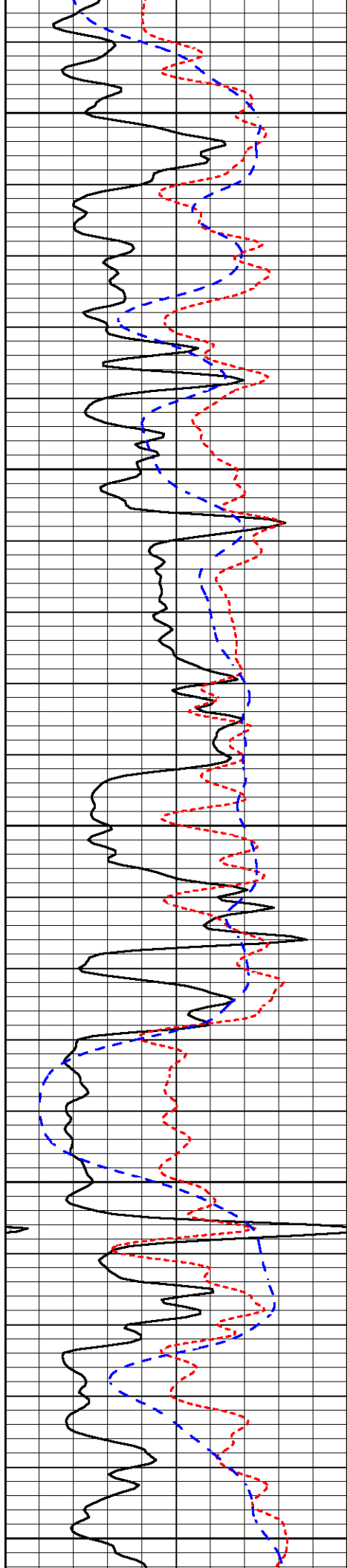


-34

-34

-34

-34



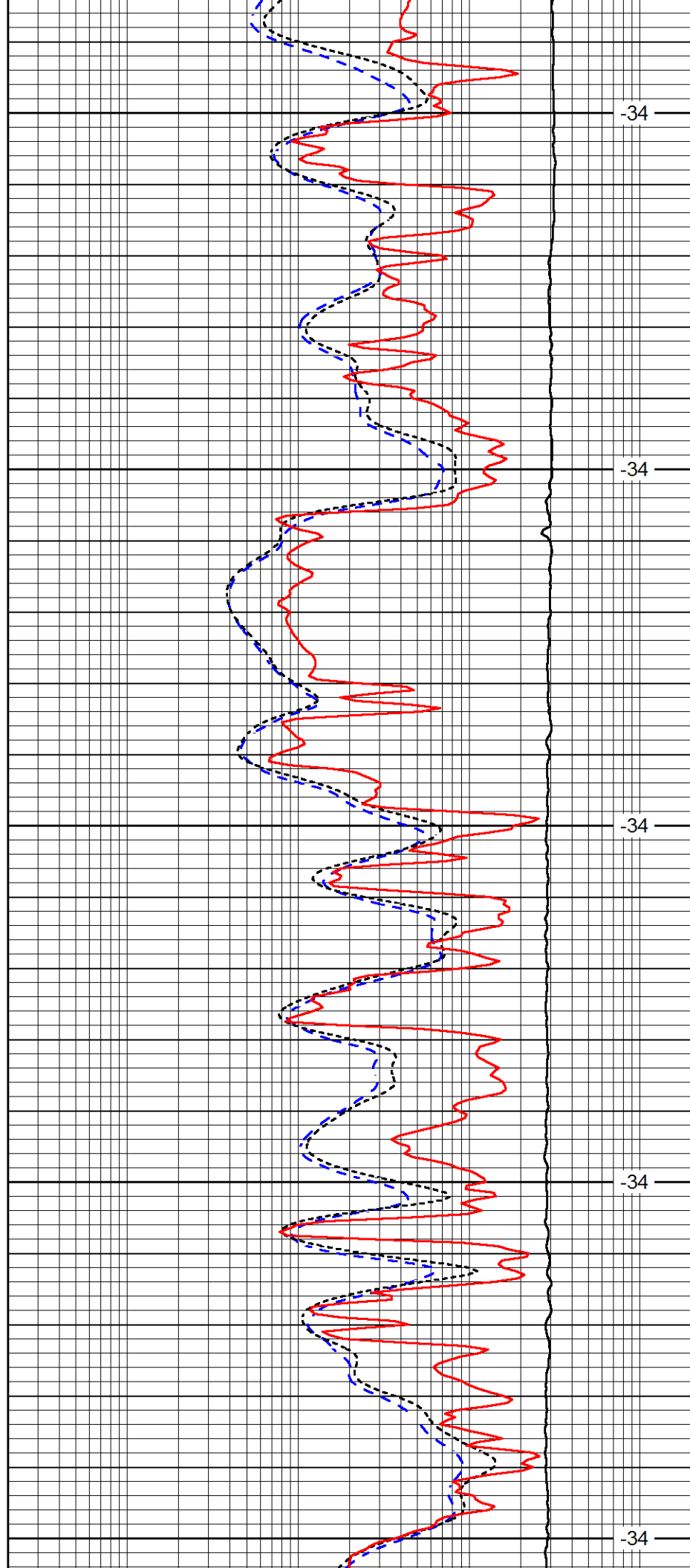
4300

4350

4400

4450

4500



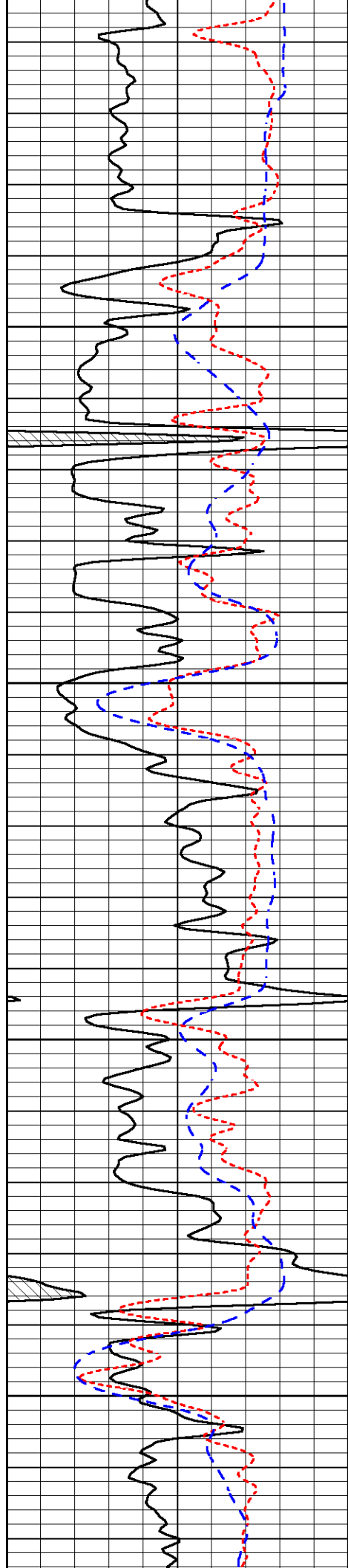
-34

-34

-34

-34

-34

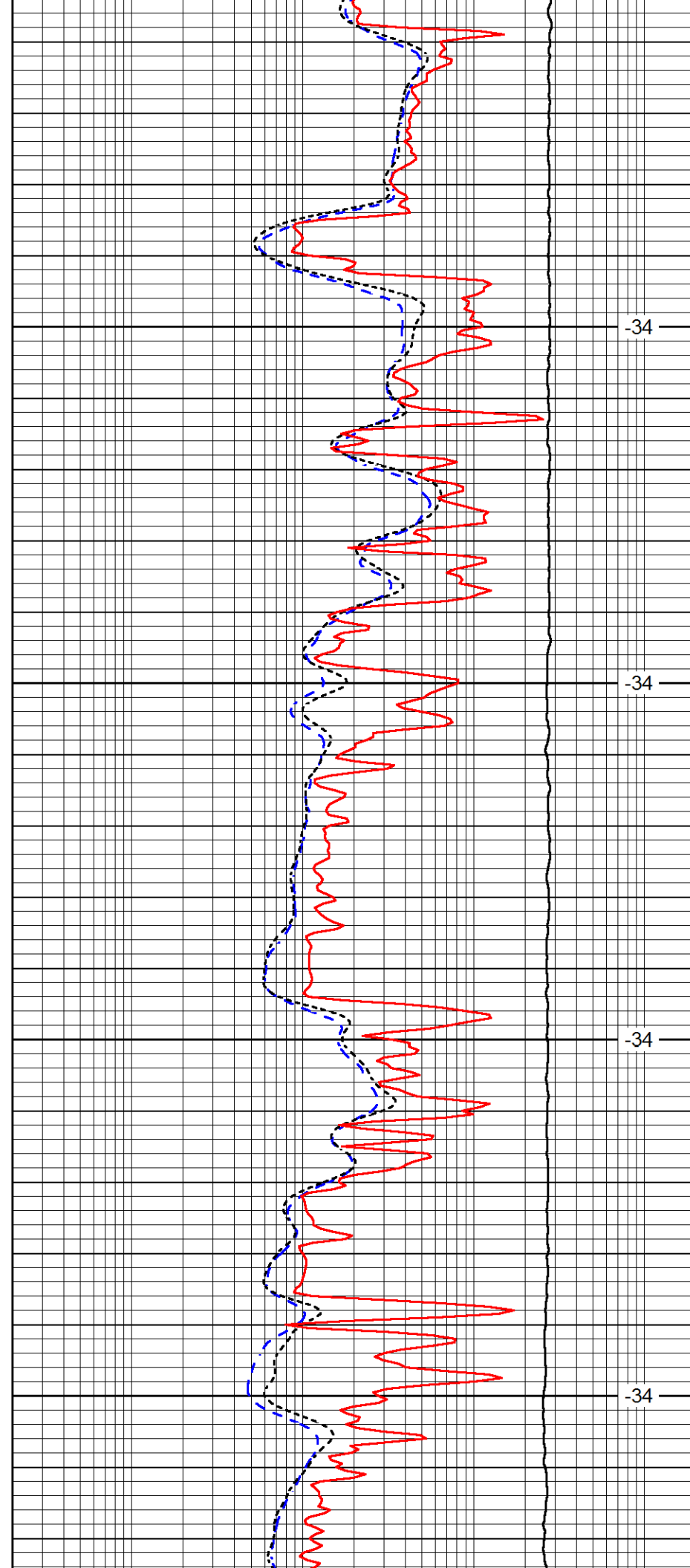


4550

4600

4650

4700

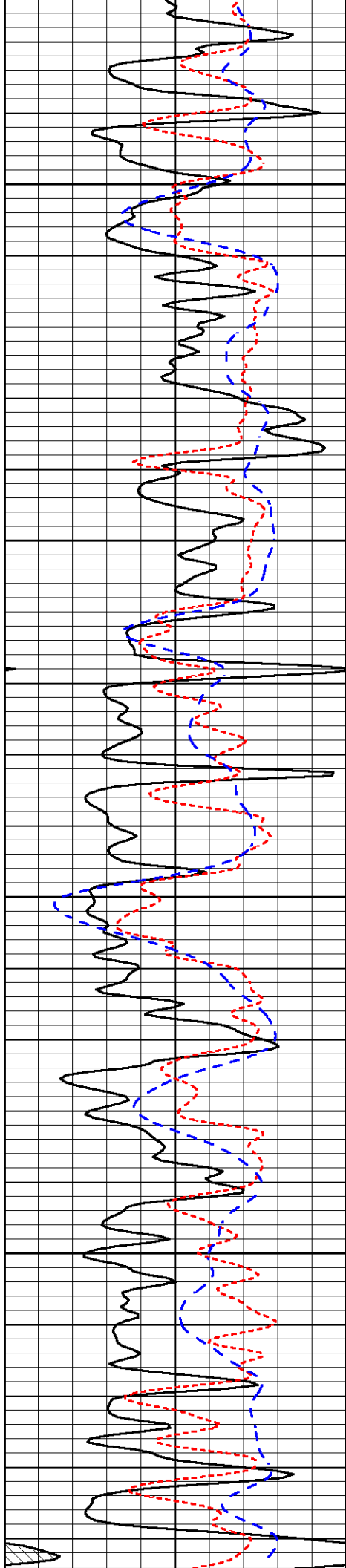


-34

-34

-34

-34

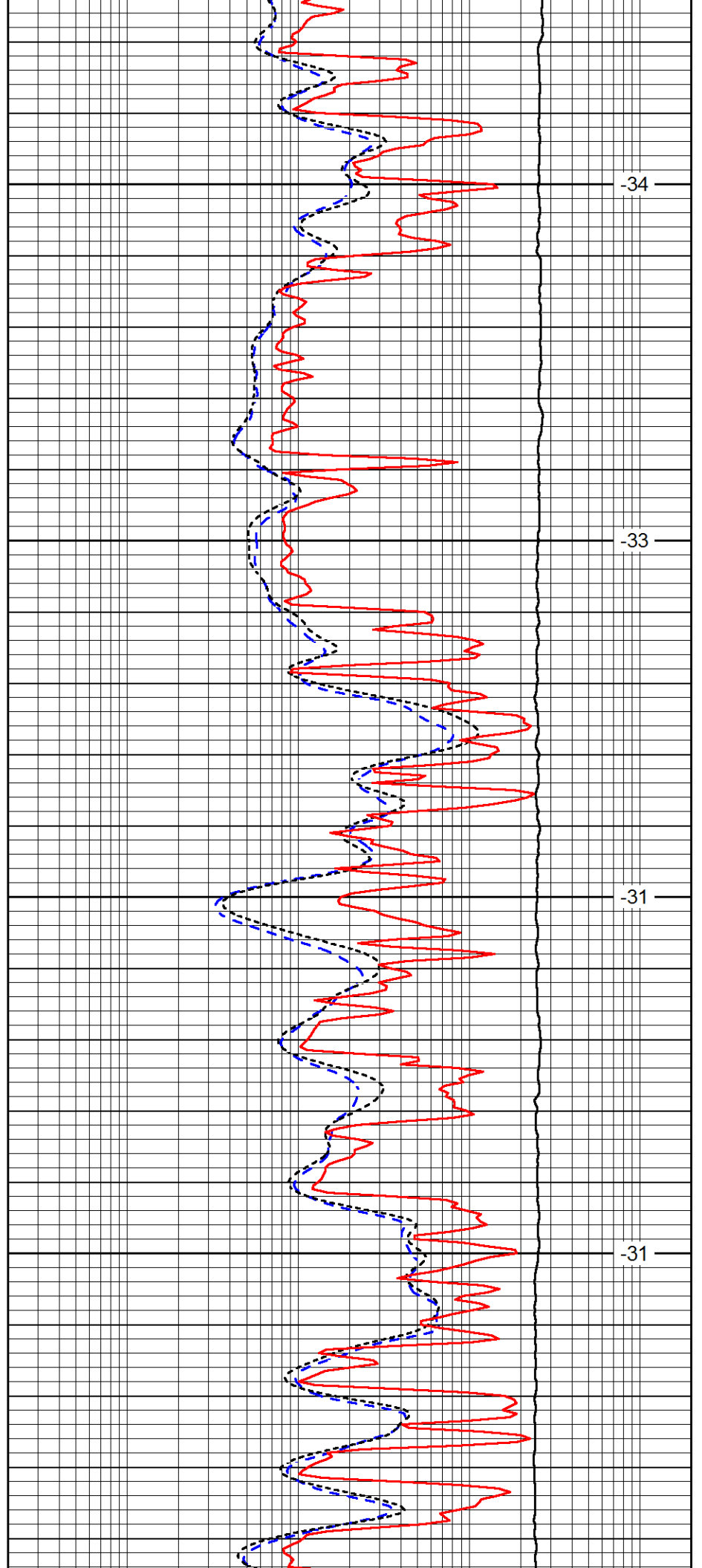


4750

4800

4850

4900

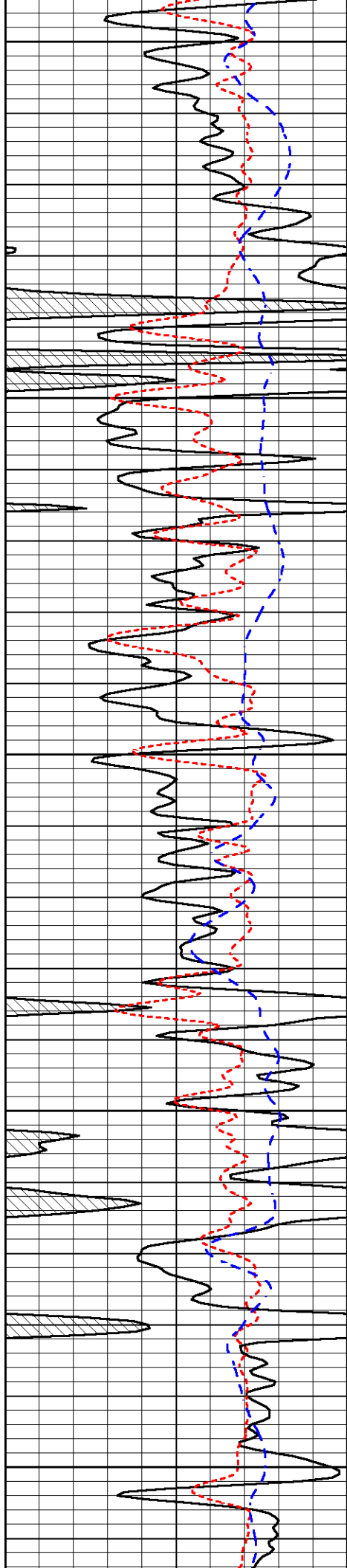


-34

-33

-31

-31



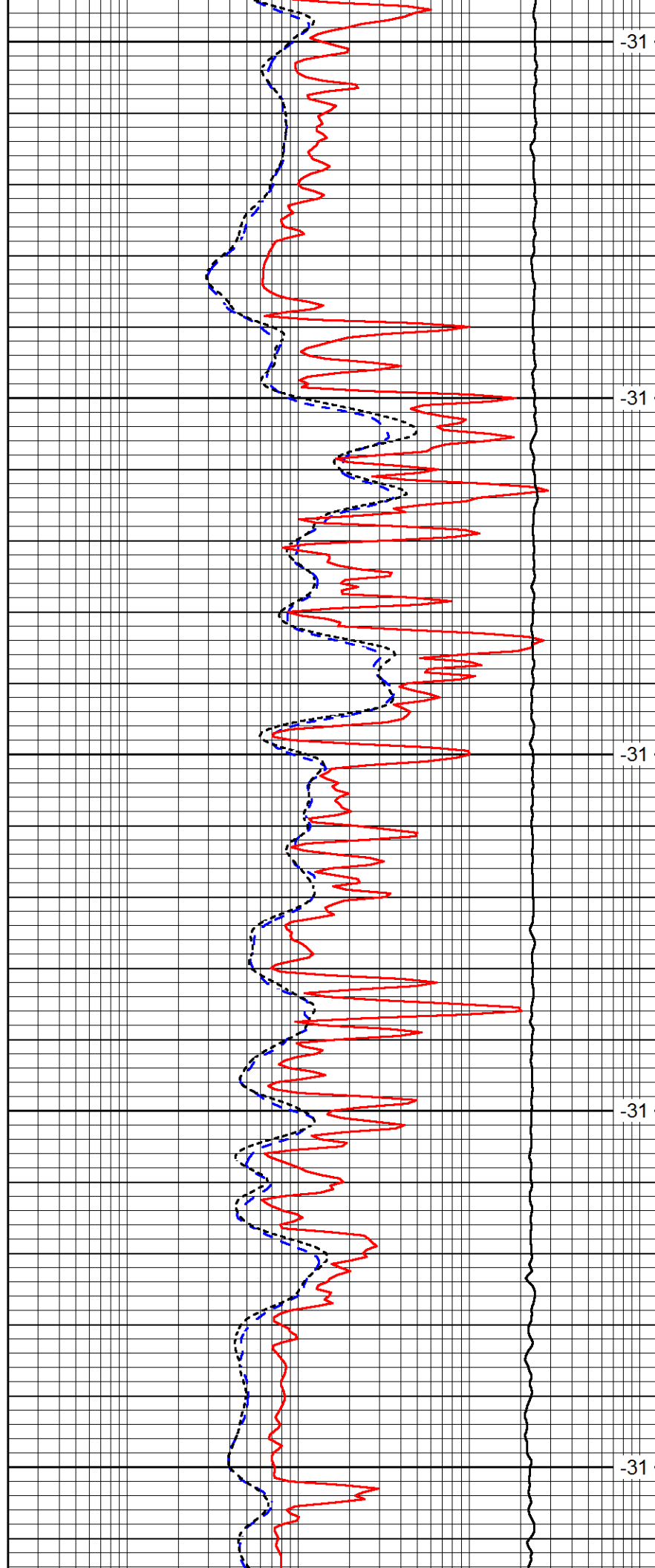
4950

5000

5050

5100

5150



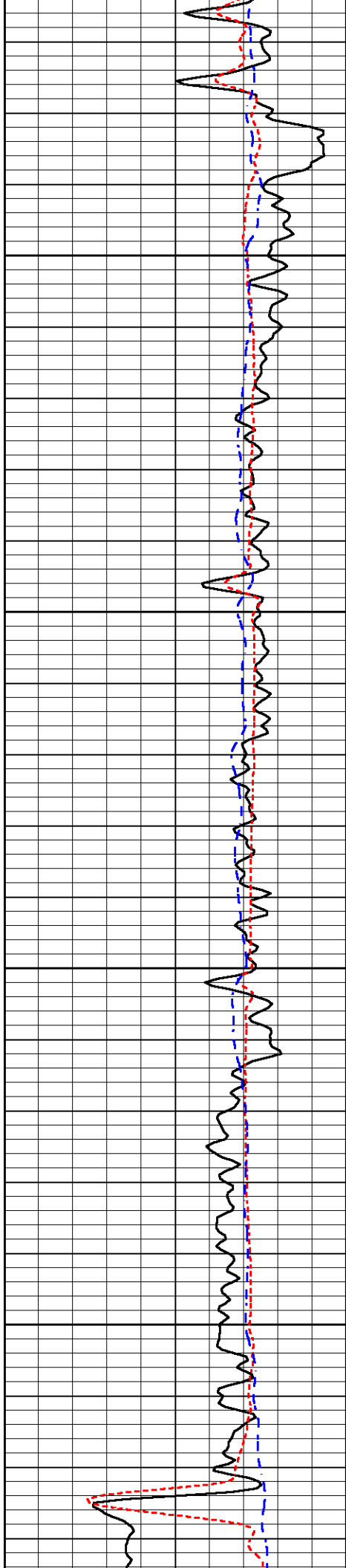
-31

-31

-31

-31

-31

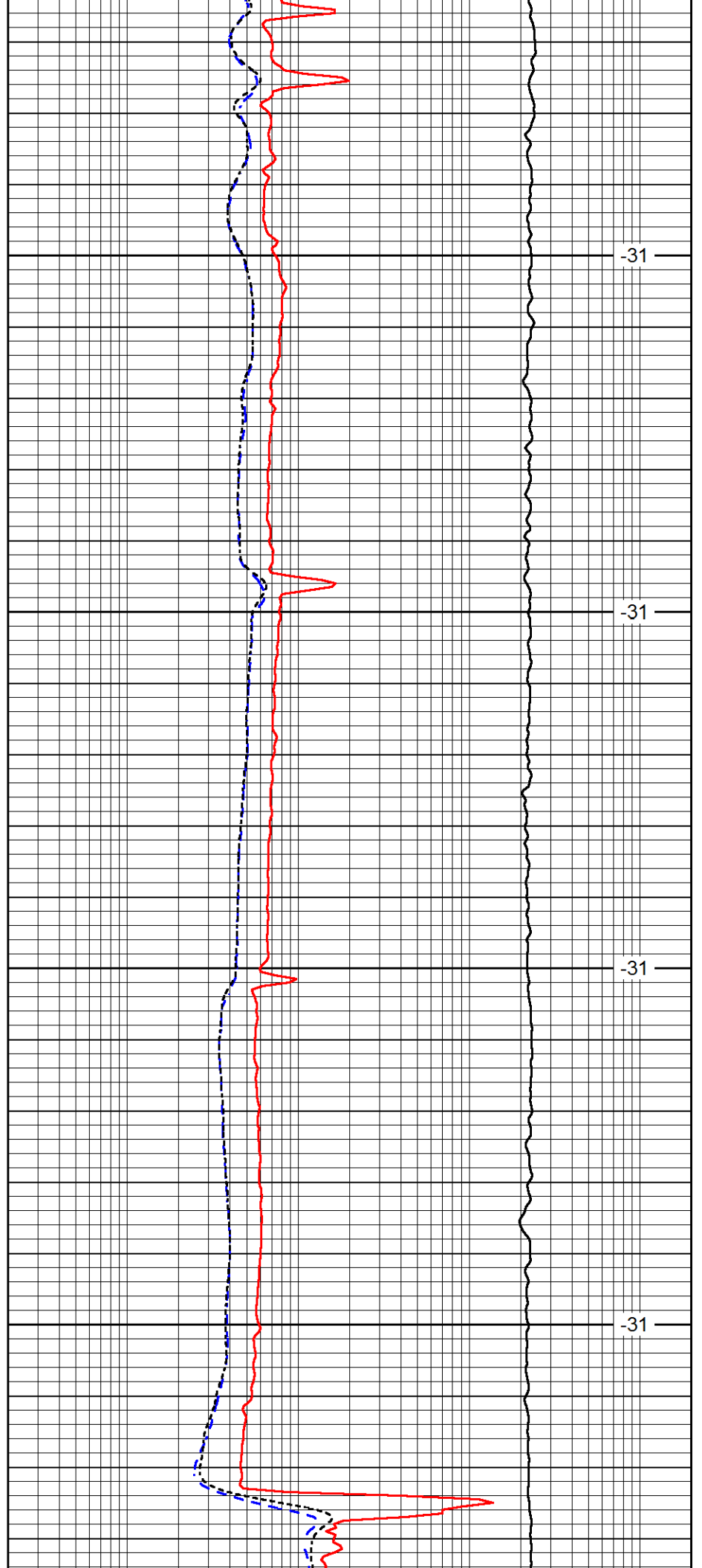


5200

5250

5300

5350

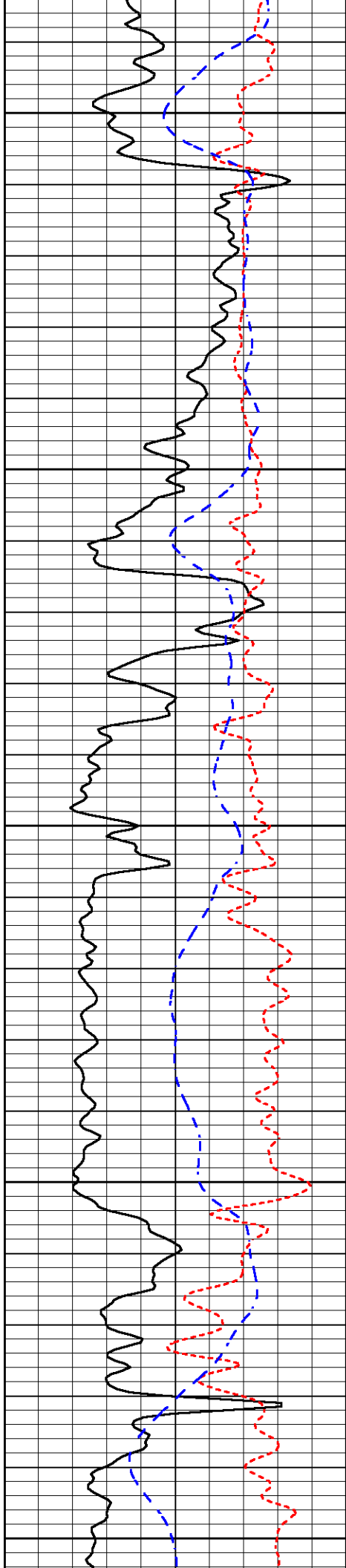


-31

-31

-31

-31



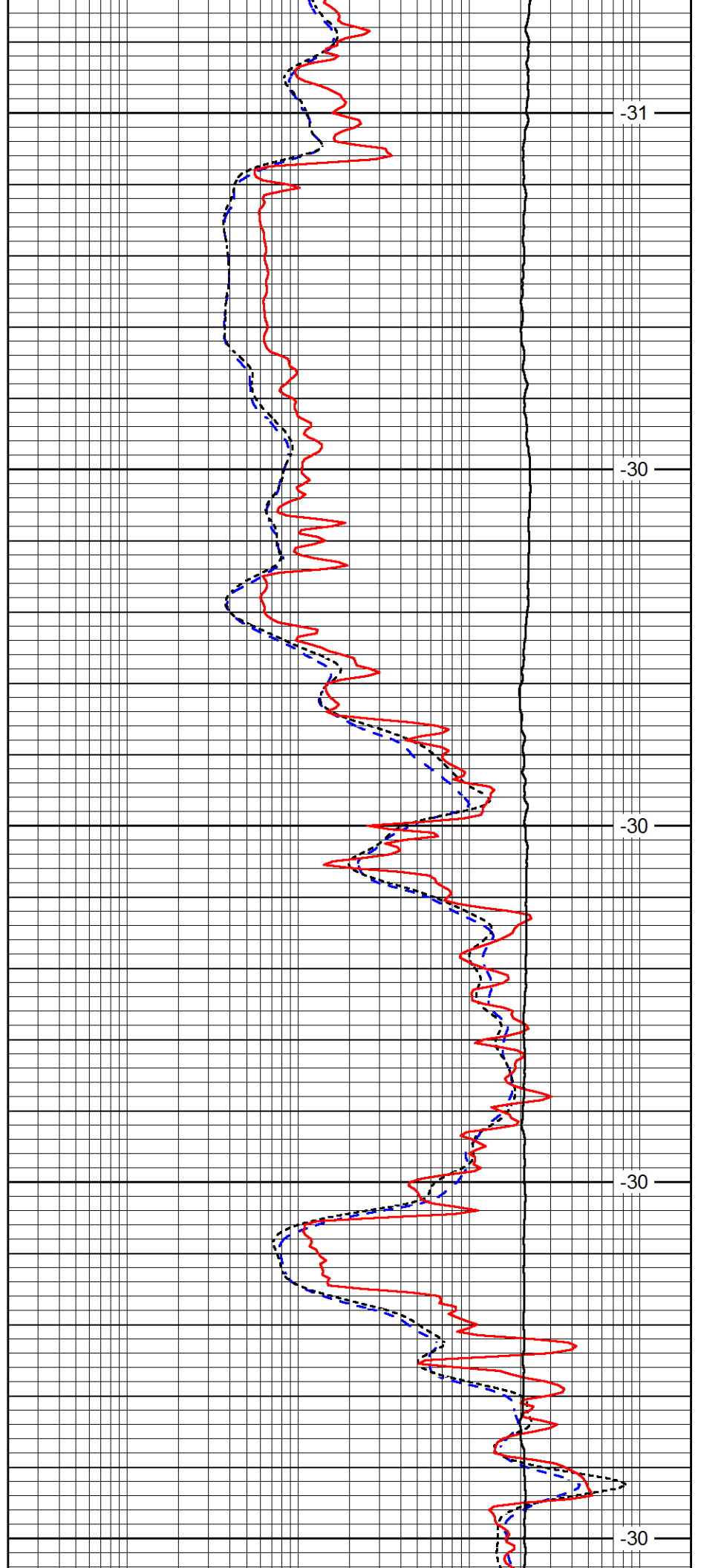
5400

5450

5500

5550

5600



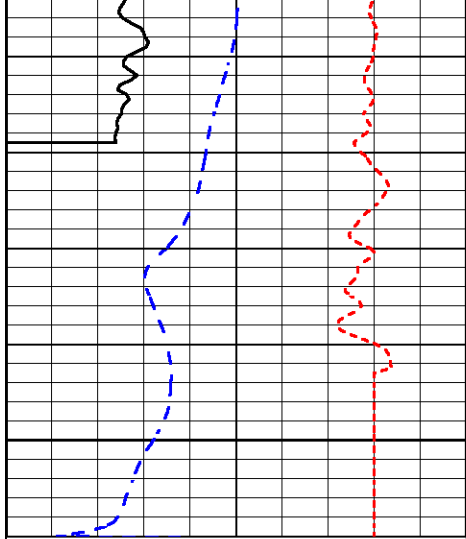
-31

-30

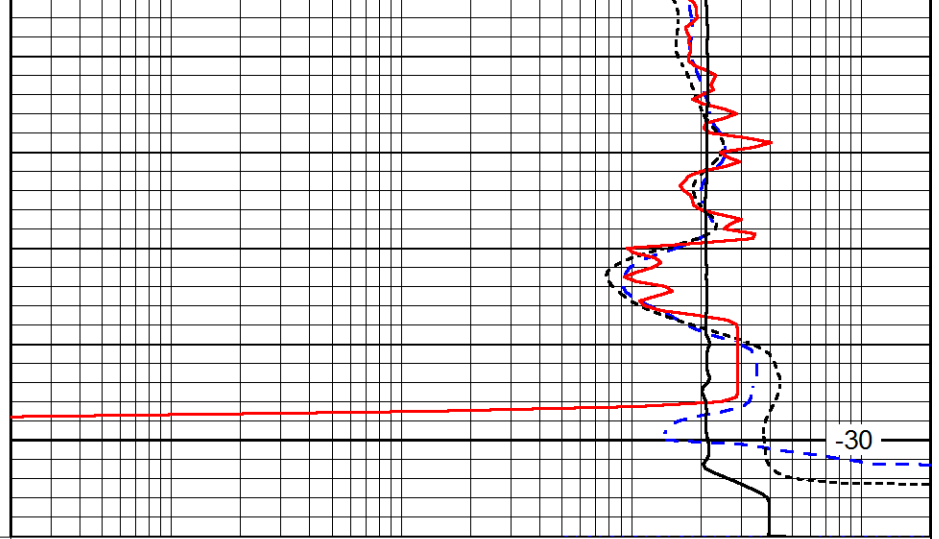
-30

-30

-30



5650



-30

0	Gamma Ray (GAPI)	150
-160	RxoRt	40
-200	SP (mV)	0

0.2	Deep Resistivity (Ohm-m)	2000
0.2	Medium Resistivity (Ohm-m)	2000
0.2	Shallow Resistivity (Ohm-m)	2000
10000	Line Tension (lb)	0

LSPD (ft/min)
