



**MIDWEST SURVEYS**  
 LOGGING - PERFORATING - CONSULTING SERVICES  
 P.O. Box 68, Osawatomie, KS 66064  
 913 / 755 - 2128

**GAMMA RAY / NEUTRON / CCL**

File No. Company Altavista Energy, Inc.

Well Knoche No. A-2

Field Block

County Miami State Kansas

Location 1500' FSL & 3670' FEL  
 SW-SW-NE-SW

Other Services Perforate

Sec. 16 Twp. 18S Rge. 24E  
 Permanent Datum GL Elevation 942'  
 Log Measured From GL  
 Drilling Measured From GL

Date 01-26-2016

Run Number One

Depth Driller 580.0

Depth Logger 532.8

Bottom Logged Interval 531.8

Top Log Interval 20.0

Fluid Level Full

Type Fluid Water  
 Density / Viscosity NA  
 Salinity - PPM Cl NA  
 Max Recorded Temp NA  
 Estimated Cement Top NA  
 Equipment No. 102 Location Osawatimie  
 Recorded By Gary Windisch  
 Witnessed By Doug Evans

BORE-HOLE RECORD				CASING RECORD			
RUN No.	BIT	FROM	TO	SIZE	WGT.	FROM	TO
One	9.875"	0.0	23.0	7.00"	17.0#	0.0	23.0
Two	5.625"	23.0	580.0	2.875"	6.5#	0.0	557.20
				Baffle	Set	At	533.50

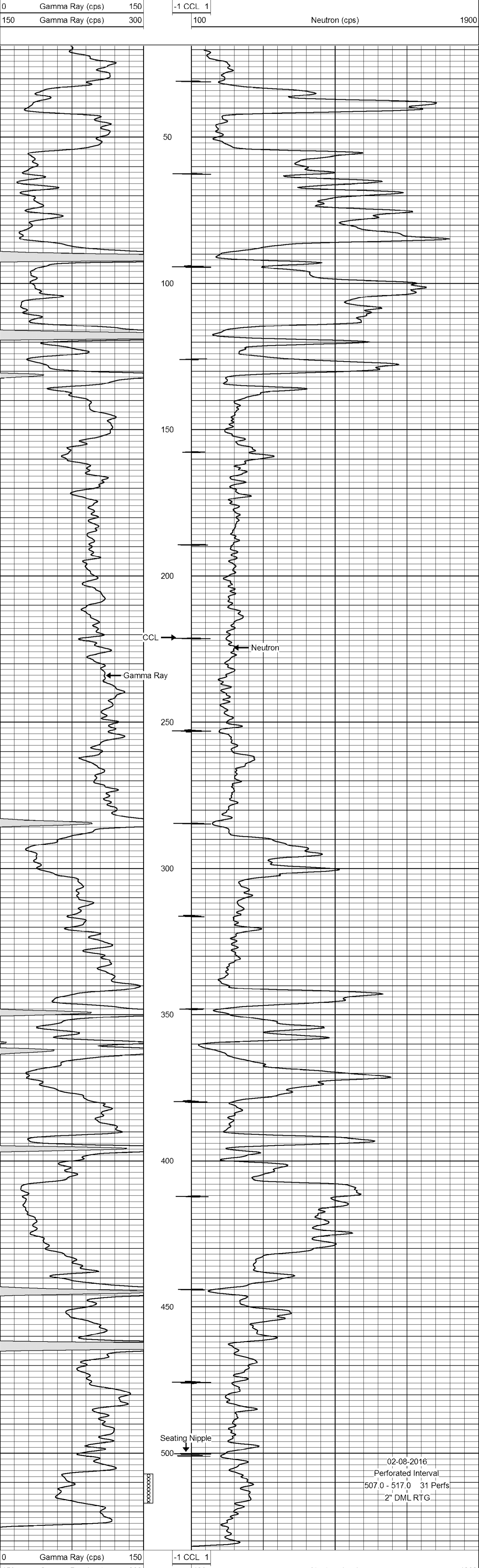
<<< Fold Here >>>

All interpretations are opinions based on inferences from electrical or other measurements and we cannot and do not guarantee the accuracy or correctness of any interpretation, and we shall not, except in the case of gross or willful negligence on our part, be liable or responsible for any loss, costs, damages, or expenses incurred or sustained by anyone resulting from any interpretation made by any of our officers, agents or employees. These interpretations are also subject to our general terms and conditions set out in our current Price Schedule.

Comments

Drilling Contractor :  
 Town Oilfield Services, Inc.

Database File: knoche 2a.db  
 Dataset Pathname: pass1  
 Presentation Format: gr-n-ccl  
 Dataset Creation: Tue Jan 26 10:14:29 2016 by Log SCH 111116  
 Charted by: Depth in Feet scaled 1:240



02-08-2016  
 Perforated Interval  
 507.0 - 517.0 31 Perfs  
 2" DML RTG