

CORNISH

PHONE 431-9308
 WIRELINE SERVICES, INC.
 P.O. DRAWER H
 CHANUTE, KANSAS

RADIOACTIVITY LOG

FILE NO.	COMPANY	WESTWIND PRODUCTION
WELL	WANSLEY INJ. I-3	
FIELD	API NO. 15-091-22,960-00-00	
COUNTY	JOHNSON	STATE KANSAS
LOCATION:	2275' ESL/365' FEL	OTHER SERVICES:
SEC. 19	TWP. 14S	RGE. 22E
PERMANENT DATUM:	GROUND LEVEL	ELEV. F.B.
LOG MEASURED FROM	G.L.	FT. ABOVE PERM. DATUM
DRILLING MEASURED FROM	G.L.	G.L.
DATE	1-28-02	1-28-02
RUN NO.	1 NW	1 NW
TYPE LOG	GAMMA RAY	NEUTRON
DEPTH - DRILLER	932.4'	932.4'
DEPTH - LOGGER	926.6'	931.4'
BOTTOM LOGGED INTERVAL	300.0'	300.0'
TOP LOGGED INTERVAL		
TYPE FLUID IN HOLE	WATER	WATER
SALINITY, PPM CL.		
DENSITY		
LEVEL	FULL	FULL
MAX. REC. TEMP., DEG F.		
OPERATING RIG TIME	SANBORN, G.	SANBORN, G.
RECORDED BY	PATRICK, K.	PATRICK, K.
WITNESSED BY	REUSCH	REUSCH
RUN NO.	BORE-HOLE RECORD	CASING RECORD
NO.	BIT	SIZE
	FROM	WGT.
	TO	FROM
		TO

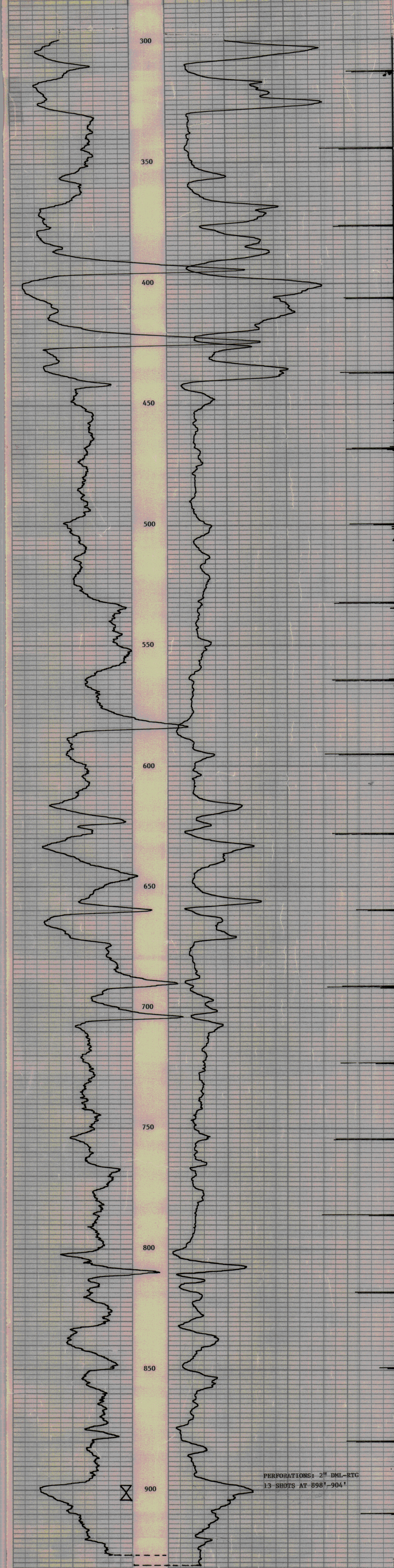
THIS HEADING AND LOG CONFORMS TO API RP 33

EQUIPMENT DATA			
GAMMA RAY		NEUTRON	
RUN NO.	1 NW	RUN NO.	1 NW
TOOL MODEL NO.	9205	LOG TYPE	NEU/NEU
DIAMETER	1-11/16"	TOOL MODEL NO.	9205
DETECTOR MODEL NO.	95SC	DIAMETER	1-11/16"
TYPE	SCINT.	DETECTOR MODEL NO.	95HE
LENGTH	1"x4"	TYPE	He-3
DISTANCE TO N. SOURCE	8.5'	LENGTH	1"x6"
		SOURCE MODEL NO.	AC
		SERIAL NO.	MRC415
		SPACING	13"
		TYPE	Am/Be
		STRENGTH	6.7x10-6

LOGGING DATA					
GENERAL		GAMMA RAY		NEUTRON	
RUN NO.		T.C. SEC.	SENS. SETTINGS	T.C. SEC.	SENS. SETTINGS
DEPTHS	FROM TO	ZERO DIV. L OR R	API G.R. UNITS PER LOG DIV.	ZERO DIV. L OR R	API N. UNITS PER LOG DIV.
1	931.4' 300'	2L	20	2.0	0-.35

REFERENCE LITERATURE:
 REMARKS

GAMMA RAY	DEPTH AND CASING COLLARS	NEUTRON
API UNITS		API UNITS



R.D. 926.6' R.D. 931.4'
 T.D. 932.4' T.D. 932.4'

WANSLEY INJ. I-3
 WESTWIND PRODUCTION
 JOHNSON COUNTY, KANSAS
 JANUARY 28, 2002
 GAMMA RAY/NEUTRON/PERFORATE