



MIDWEST SURVEYS
 LOGGING - PERFORATING - CONSULTING SERVICES
 P.O. Box 68, Osawatomie, KS 66064
 913 / 755 - 2128

GAMMA RAY / NEUTRON / CCL

File No. _____

Company **RJ Enterprises**

Well **Ingwerson No. 3-1**

Field **Neosho Falls / Leroy**

County **Coffey** State **Kansas**

Location **3260' FSL & 549' FEL**

NW-SE-SE-NE

Other Services

Perforate

Sec. 19 Twp. 22S Rge. 16E

Perment Datum G.L. Elevation 1007'

Log Measured From G.L. NA

Drilling Measured From G.L. 1007'

Date 03-01-2016

Run Number One

Depth Driller 1078.0

Depth Logger 1068.8

Bottom Logged Interval 1065.8

Top Log Interval 20.0

Fluid Level Full

Type Fluid Water

Density / Viscosity NA

Salinity - PPM Cl NA

Max Recorded Temp NA

Estimated Cement Top NA

Equipment No. 102

Recorded By Location Gary Wandsch

Whipped By Jason Kent

BORE-HOLE RECORD

CASING RECORD

NO.	BIT	FROM	TO	SIZE	WGT	FROM	TO
One	9.875"	40.0	40.0	7.00"	170#	0.0	40.0
Two	5.625"	40.0	1076.0	2.875"	6.5#	0.0	1070.0

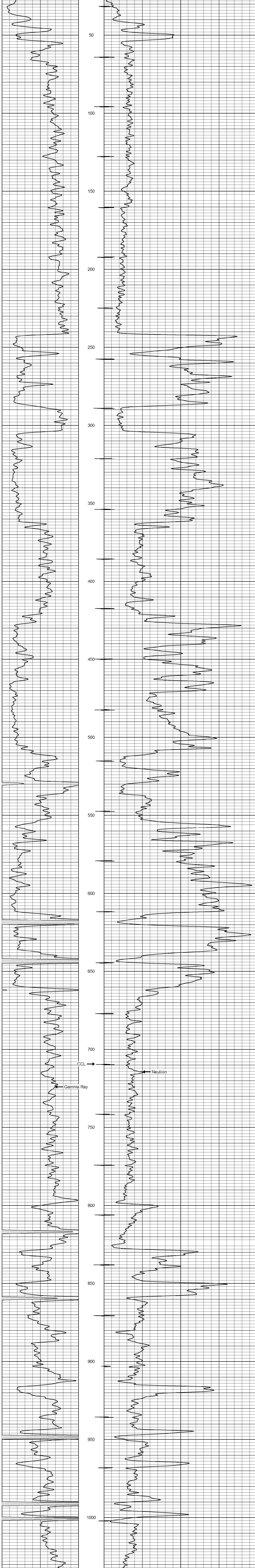
<<< Fold Here >>>

All interpretations are opinions based on inferences from electrical or other measurements and we cannot and do not guarantee the accuracy or correctness of any interpretation, and we shall not, except in the case of gross or willful negligence on our part, be liable or responsible for any loss, costs, damages, or expenses incurred or sustained by anyone resulting from any interpretation made by any of our officers, agents or employees. These interpretations are also subject to our general terms and conditions set out in our current Price Schedule.

Comments

Drilling Contractor :
RJ Enterprises

Database File: ingwerson 3i.db
 Dataset Pathname: pass1
 Presentation Format: gr-n-ccl
 Dataset Creation: Tue Mar 01 15:01:38 2016 by Log SCH 111116
 Charted by: Depth in Feet scaled 1:240



03-10-2016
 Perforated Interval
 1039.0 - 1048.0 28 Perfs
 2" DML RTG

