



**MIDWEST SURVEYS**  
 LOGGING - PERFORATING - CONSULTING SERVICES  
 P.O. Box 68, Osawatomie, KS 66064  
 913 / 755 - 2128

**GAMMA RAY / NEUTRON / CCL**

File No.

Company **Altavista Energy, Inc.**

Well **Holtz No. AI-4**

Field **Block**

County **Miami** State **Kansas**

Location **495 FSL & 4415' FEL  
NW-SE-SW-SW**

Other Services **Perforate**

Sec. **16** Twp. **18S** Rge. **24E**

Permanent Datum **GL** Elevation **926'**

Log Measured From **GL** Elevation **926'**

Drilling Measured From **GL** Elevation **926'**

Date **01-11-2016**

Run Number **One**

Depth Driller **580.0**

Depth Logger **531.0**

Bottom Logged Interval **530.0**

Top Log Interval **20.0**

Fluid Level **Full**

Type Fluid **Water**

Density / Viscosity **NA**

Salinity - PPM Cl **NA**

Max Recorded Temp **NA**

Estimated Cement Top **0.0**

Equipment No. **102** Location **Osawatomie**

Recorded By **Gary Windisch**

Witnessed By **Doug Evans**

BORE-HOLE RECORD

NO. BIT FROM TO SIZE WGT. FROM TO

One 9.875" 0.0 23.0 7.00" 17.0# 0.0 23.0

Two 5.625" 23.0 590.0 2.875" 6.5# 0.0 598.95

BAFFLE SET AT 533.25

CASING RECORD

NO. BIT FROM TO SIZE WGT. FROM TO

One 9.875" 0.0 23.0 7.00" 17.0# 0.0 23.0

Two 5.625" 23.0 590.0 2.875" 6.5# 0.0 598.95

BAFFLE SET AT 533.25

<<< Fold Here >>>

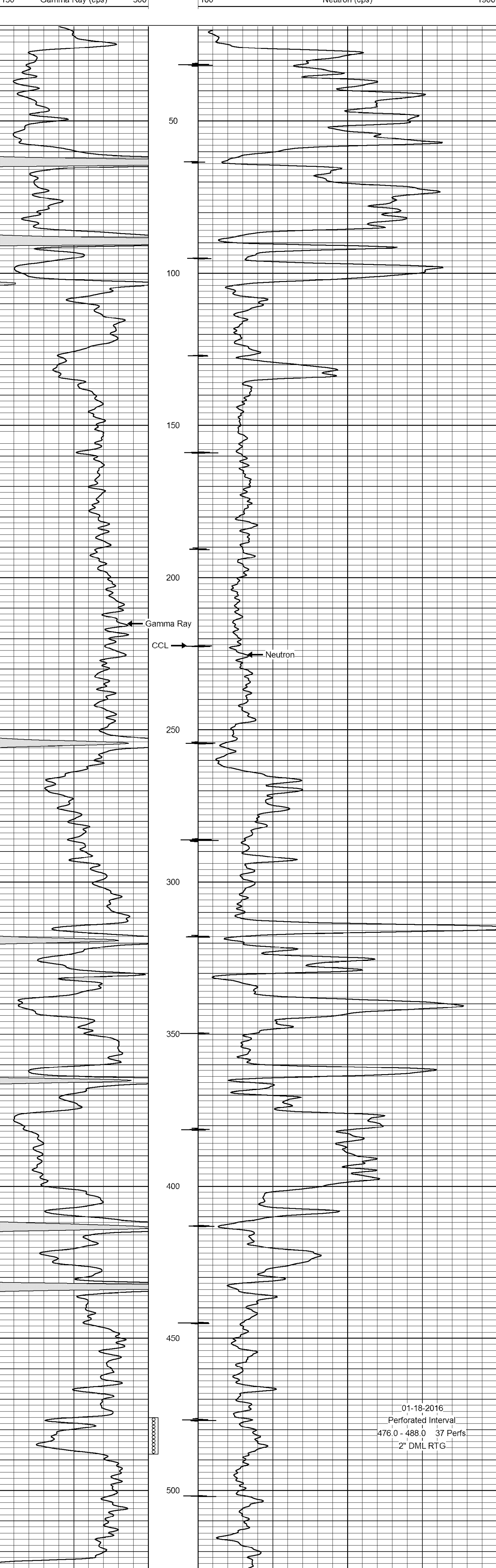
All interpretations are opinions based on inferences from electrical or other measurements and we cannot and do not guarantee the accuracy or correctness of any interpretation, and we shall not, except in the case of gross or willful negligence on our part, be liable or responsible for any loss, costs, damages, or expenses incurred or sustained by anyone resulting from any interpretation made by any of our officers, agents or employees. These interpretations are also subject to our general terms and conditions set out in our current Price Schedule.

Comments

Drilling Contractor :  
Town Oilfield Services, Inc.

Database File: holtz 4ai.db  
 Dataset Pathname: pass1  
 Presentation Format: gr-n-ccl  
 Dataset Creation: Mon Jan 11 09:06:23 2016 by Log SCH 111116  
 Charted by: Depth in Feet scaled 1:240

0 Gamma Ray (cps) 150 -1 CCL 1 Neutron (cps) 1900  
 150 Gamma Ray (cps) 300 100 1900



0 Gamma Ray (cps) 150 -1 CCL 1 Neutron (cps) 1900  
 150 Gamma Ray (cps) 300 100 1900