



MIDWEST SURVEYS
 LOGGING - PERFORATING - CONSULTING SERVICES
 P.O. Box 68, Osawatomie, KS 66064
 913 / 755 - 2128

GAMMA RAY / NEUTRON / CCL

File No. Company Altavista Energy, Inc.
 Well Windler - Stephens No. A1-4
 Field Block
 County Miami State Kansas

Location 3105' FSL & 4215' FEL
 NE-SE-SW-NW
 Other Services Perforate

Sec. 21 Twp. 18S Rge. 24E
 Permanent Datum GL Elevation 941'
 Log Measured From GL
 Drilling Measured From GL

Date 12-24-2015
 Run Number One
 Depth Driller 580.0
 Depth Logger 528.5
 Bottom Logged Interval 527.5
 Top Log Interval 20.0
 Fluid Level Full

Type Fluid Water
 Density / Viscosity NA
 Salinity - PPM Cl NA
 Max Recorded Temp NA
 Estimated Cement Top 0.0
 Equipment No. Location 102 Osawatomie
 Recorded By Gary Windisch
 Witnessed By Doug Evans

BORE-HOLE RECORD				CASING RECORD			
RUN No.	BIT	FROM	TO	SIZE	WGT.	FROM	TO
One	9.875"	0.0	23.0	7.00"	17.0#	0.0	23.0
Two	5.625"	23.0	590.0	2.875"	6.5#	0.0	580.80
				Baffle	Set	At	528.75

<<< Fold Here >>>

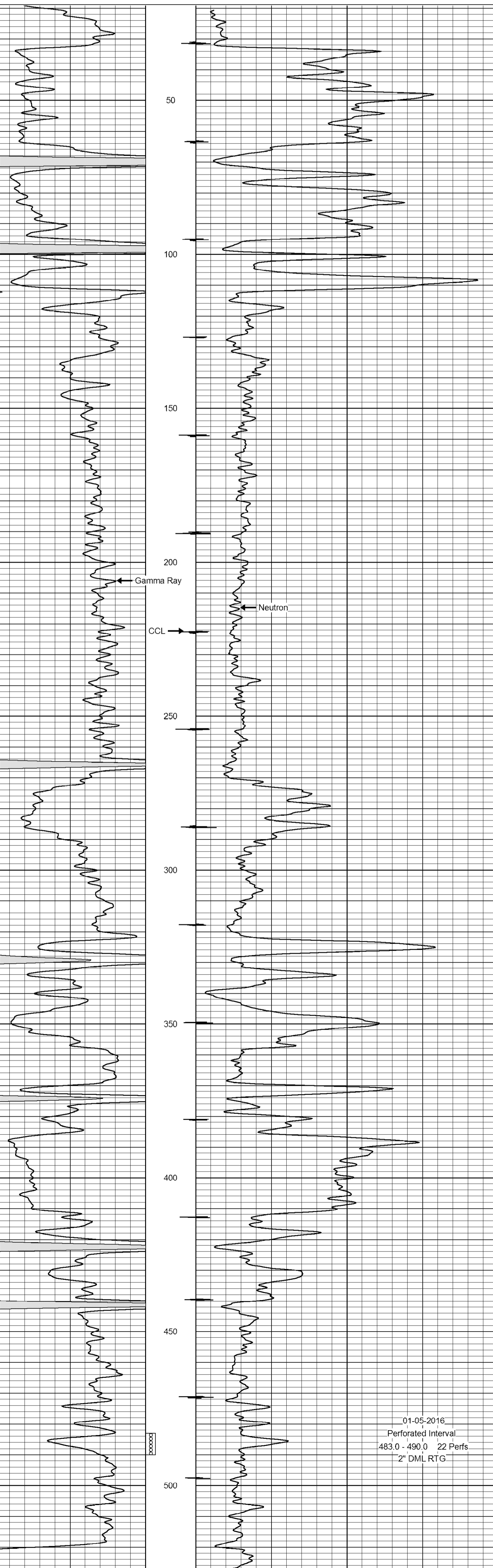
All interpretations are opinions based on inferences from electrical or other measurements and we cannot and do not guarantee the accuracy or correctness of any interpretation, and we shall not, except in the case of gross or willful negligence on our part, be liable or responsible for any loss, costs, damages, or expenses incurred or sustained by anyone resulting from any interpretation made by any of our officers, agents or employees. These interpretations are also subject to our general terms and conditions set out in our current Price Schedule.

Comments

Drilling Contractor :
 Town Oilfield Services, Inc.

Database File: windler 4ais.db
 Dataset Pathname: pass1
 Presentation Format: gr-n-ccl
 Dataset Creation: Thu Dec 24 09:16:12 2015 by Log SCH 111116
 Charted by: Depth in Feet scaled 1:240

0	Gamma Ray (cps)	150	-1 CCL 1	100	Neutron (cps)	1900
150	Gamma Ray (cps)	300				



01-05-2016
 Perforated Interval
 483.0 - 490.0 22 Perfs
 2" DML RTG

0	Gamma Ray (cps)	150	-1 CCL 1	100	Neutron (cps)	1900
150	Gamma Ray (cps)	300				