



**Casedhole Solutions**

**MICRO LOG**

Company L.D. DRILLING, INC.  
 Well #1-15 DOWD  
 Field WILDCAT  
 County LANE  
 State KANSAS

Company L.D. DRILLING, INC.  
 Well #1-15 DOWD  
 Field WILDCAT  
 County LANE State KANSAS

Location: 795' FSL & 1050' FEL  
 API #: 15-101-22578-0000  
 Permanent Datum GROUND LEVEL Elevation 2679  
 Log Measured From KELLY BUSHING 5' A.G.L.  
 Drilling Measured From KELLY BUSHING  
 SEC 15 TWP 18S RGE 27W  
 Other Services CDL/CNL DIL  
 Elevation K.B. 2684 D.F. 2682 G.L. 2679

Date	2/8/16
Run Number	TWO
Depth Driller	4704
Depth Logger	4706
Bottom Logged Interval	4704
Top Log Interval	3400
Casing Driller	8 5/8" @ 305'
Casing Logger	304
Bit Size	7 7/8"
Type Fluid in Hole	CHEMICAL MUD
Density / Viscosity	9.5/46
pH / Fluid Loss	9.0/8.0
Source of Sample	FLOWLINE
Rm @ Meas. Temp	.80 @ 55F
Rmt @ Meas. Temp	.60 @ 55F
Rmc @ Meas. Temp	.96 @ 55F
Source of Rmf / Rmc	MEASUREMENT
Rm @ BHT	.36 @ 122F
Time Circulation Stopped	2 HOURS
Time Logger on Bottom	
Maximum Recorded Temperature	122F
Equipment Number	4010
Location	HAYS, KANSAS
Recorded By	JASON CAPPELLUCCI
Witnessed By	KIM SHOEMAKER

<<< Fold Here >>>

All interpretations are opinions based on inferences from electrical or other measurements and we cannot and do not guarantee the accuracy or correctness of any interpretation, and we shall not, except in the case of gross or willful negligence on our part, be liable or responsible for any loss, costs, damages, or expenses incurred or sustained by anyone resulting from any interpretation made by any of our officers, agents or employees. These interpretations are also subject to our general terms and conditions set out in our current Price Schedule.

Comments

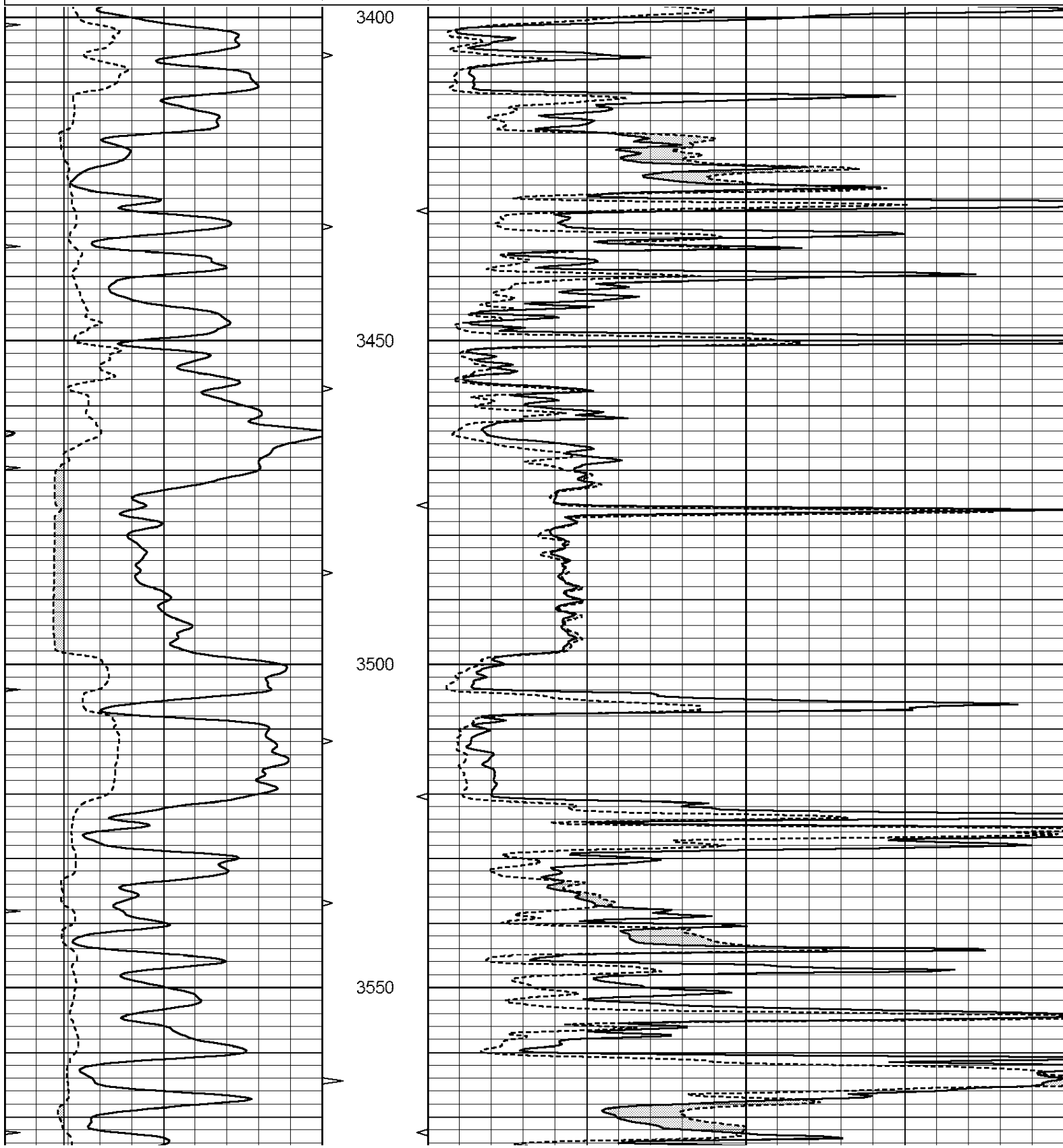
THANK YOU FOR USING CASED HOLE SOLUTIONS, HAYS, KS. (785) 628-6395  
 DIRECTIONS:  
 NESS CITY, KS. - WEST TO COUNTY LINE - 2 MILES WEST TO MILE MARKER  
 96 - 1/4 MORE WEST - NORTH & WEST INTO

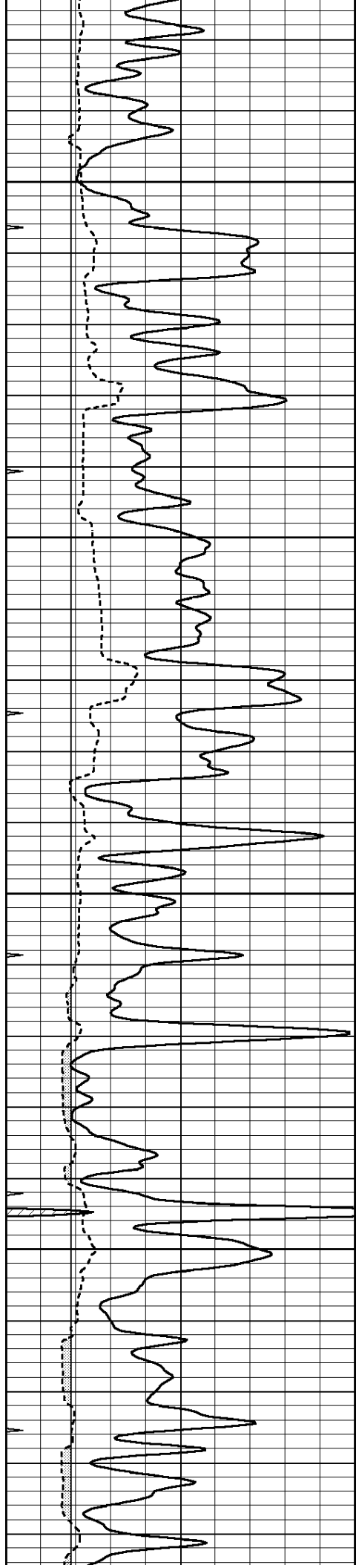


**MAIN SECTION**

Database File: 30892ddn.db  
 Dataset Pathname: pass6.1  
 Presentation Format: \_micro  
 Dataset Creation: Tue Feb 09 02:34:34 2016 by Calc Open-Cased 090629  
 Charted by: Depth in Feet scaled 1:240

0	GAMMA RAY (GAPI)	150	ABHV	0	MEL1.5 (Ohm-m)	40
6	CALIPER (in)	16	10 (ft3)	0	MEL2.0 (Ohm-m)	40
0	MINMK	20	TBHV			
			0 (ft3)	10		



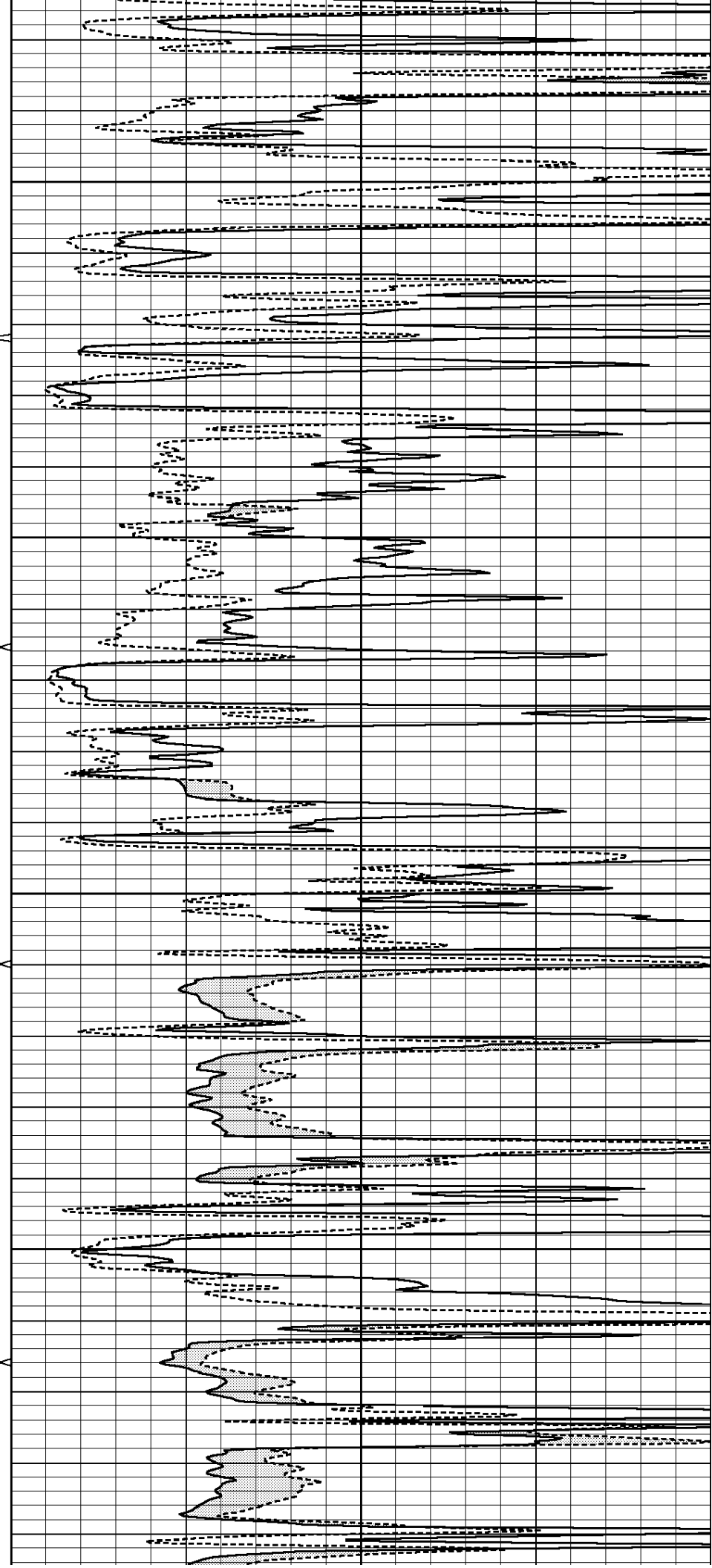


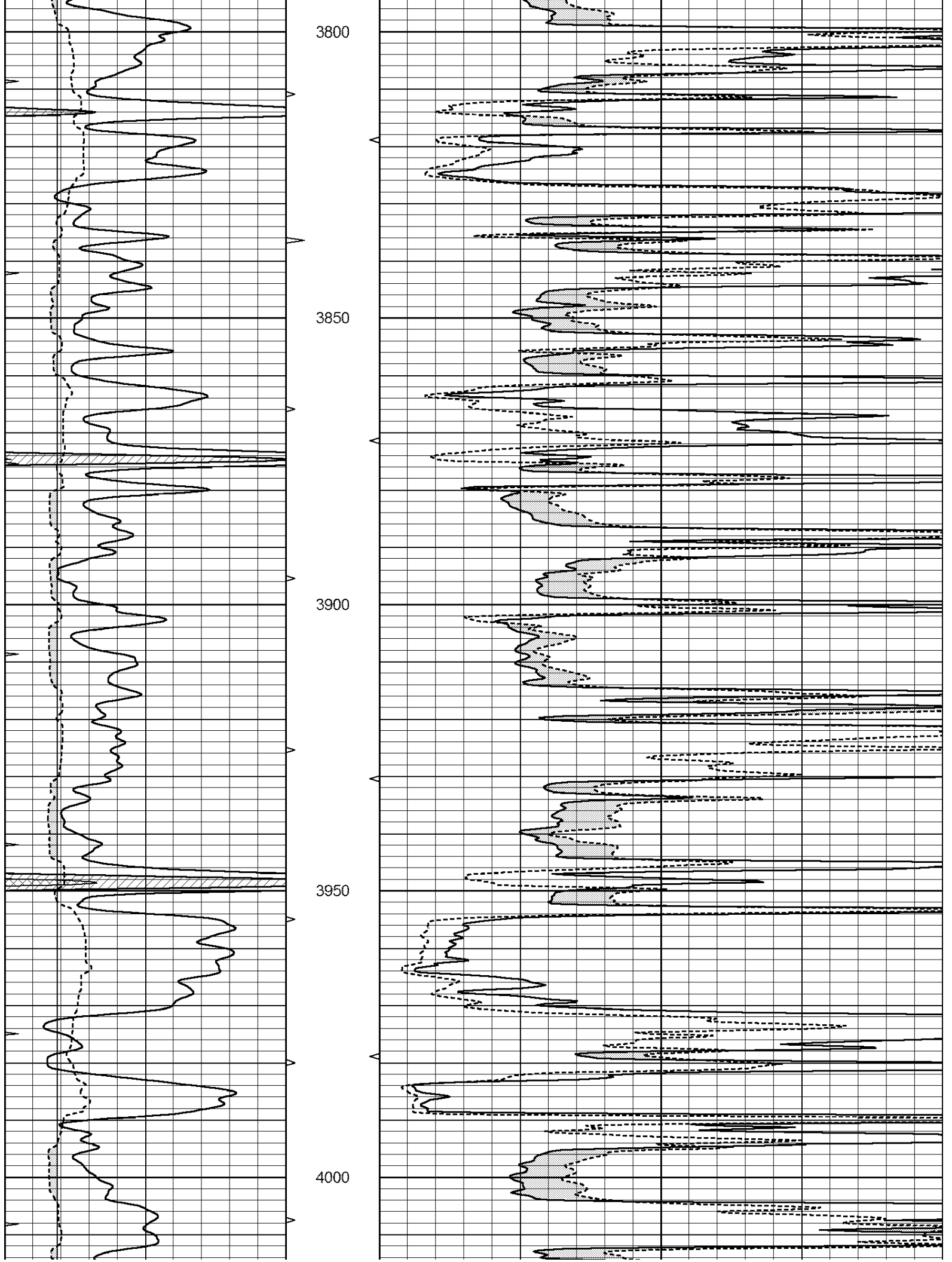
3600

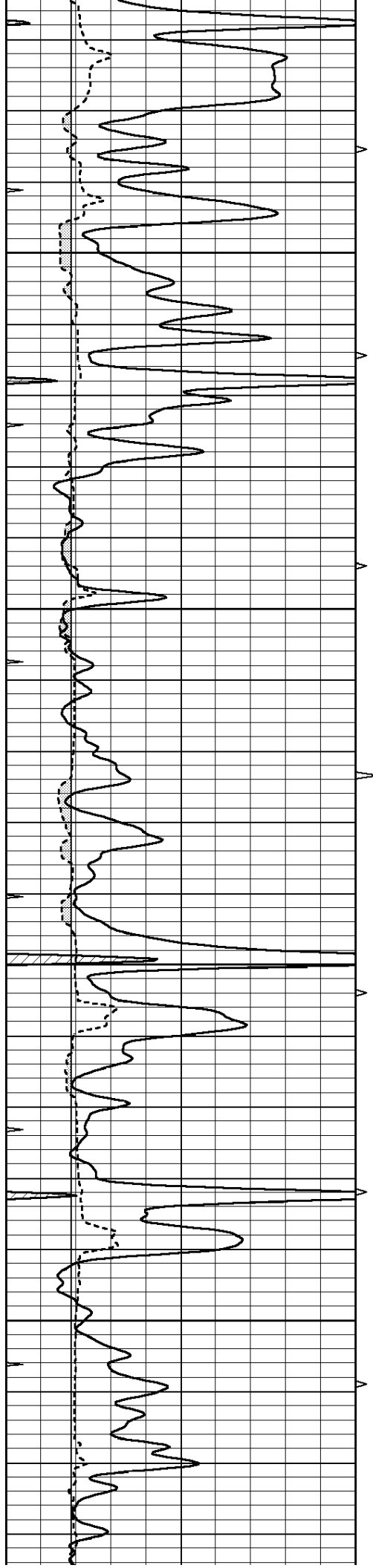
3650

3700

3750





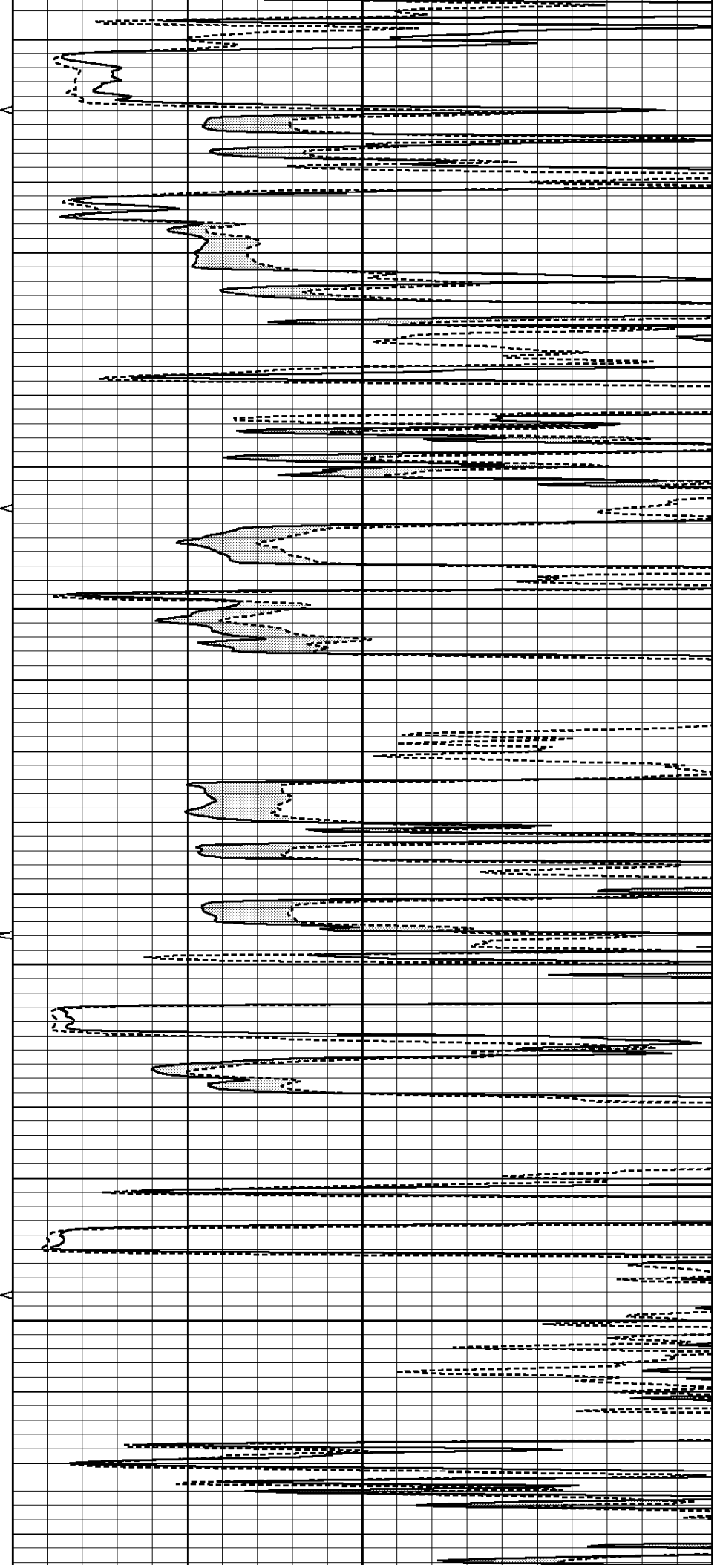


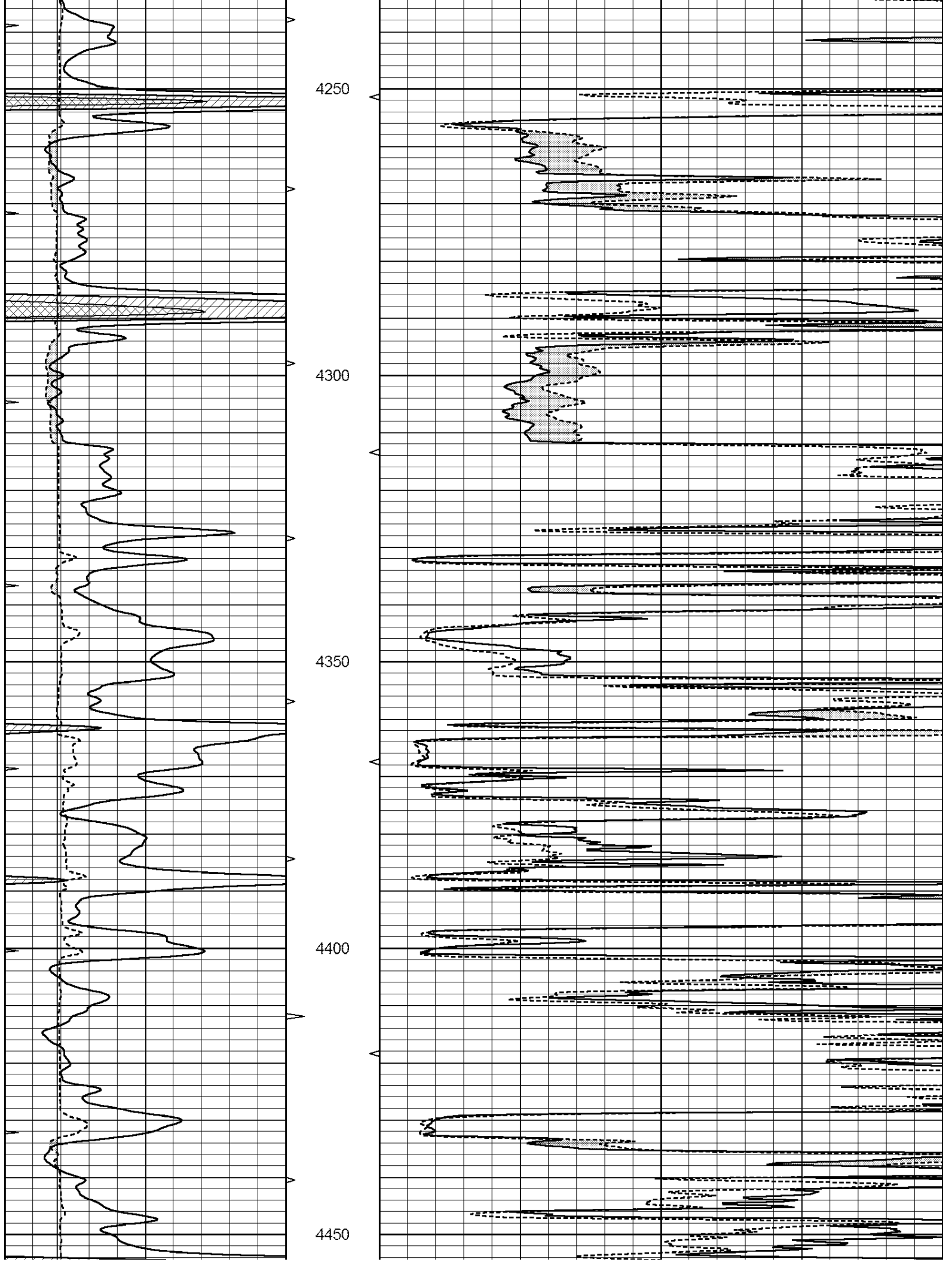
4050

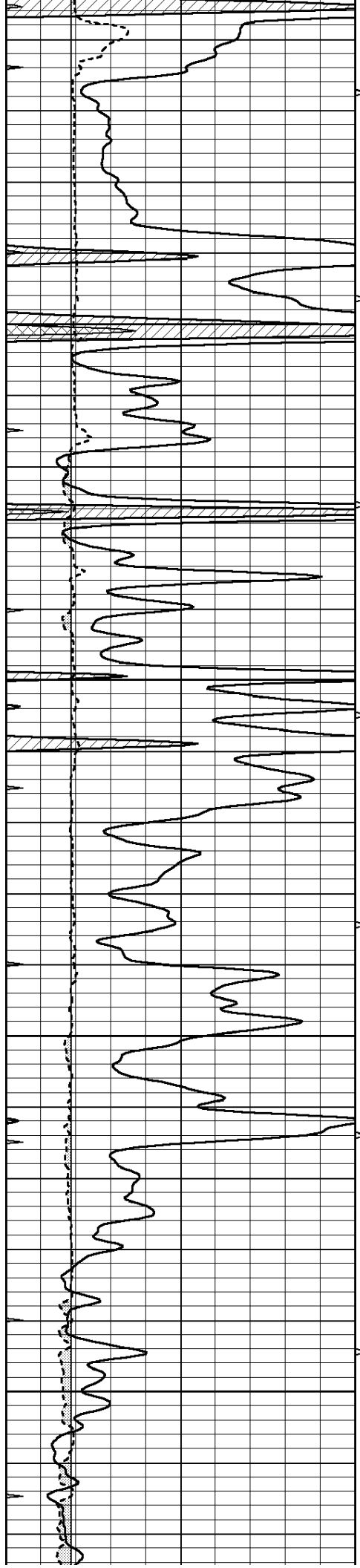
4100

4150

4200





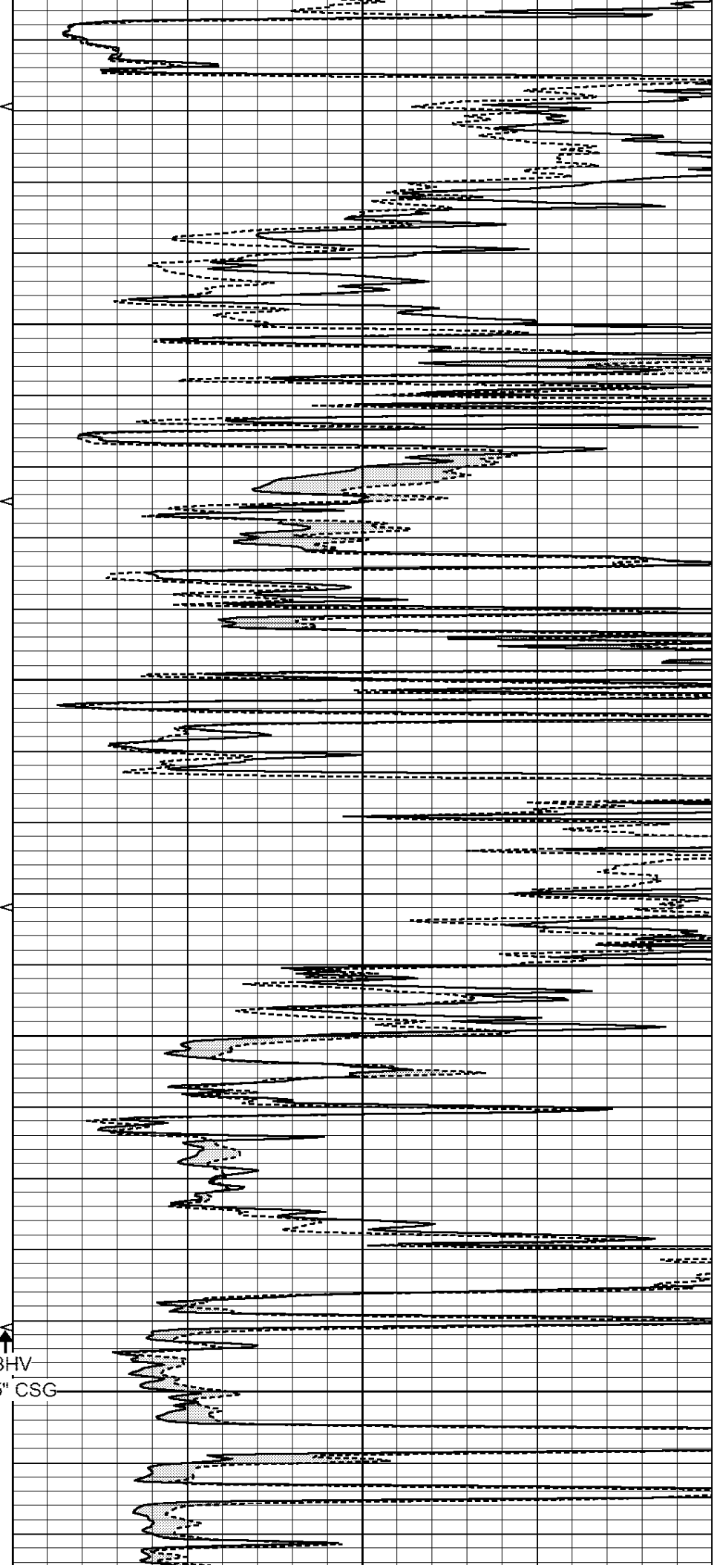


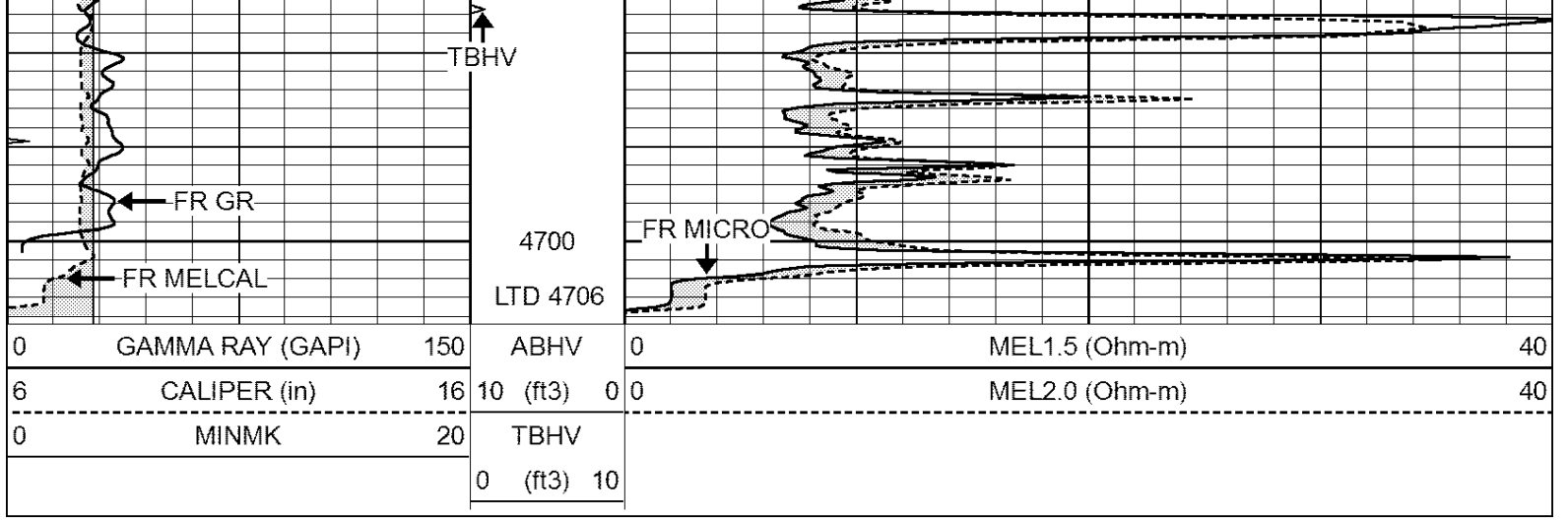
4500

4550

4600

↑  
ABHV  
46505.5" CSG



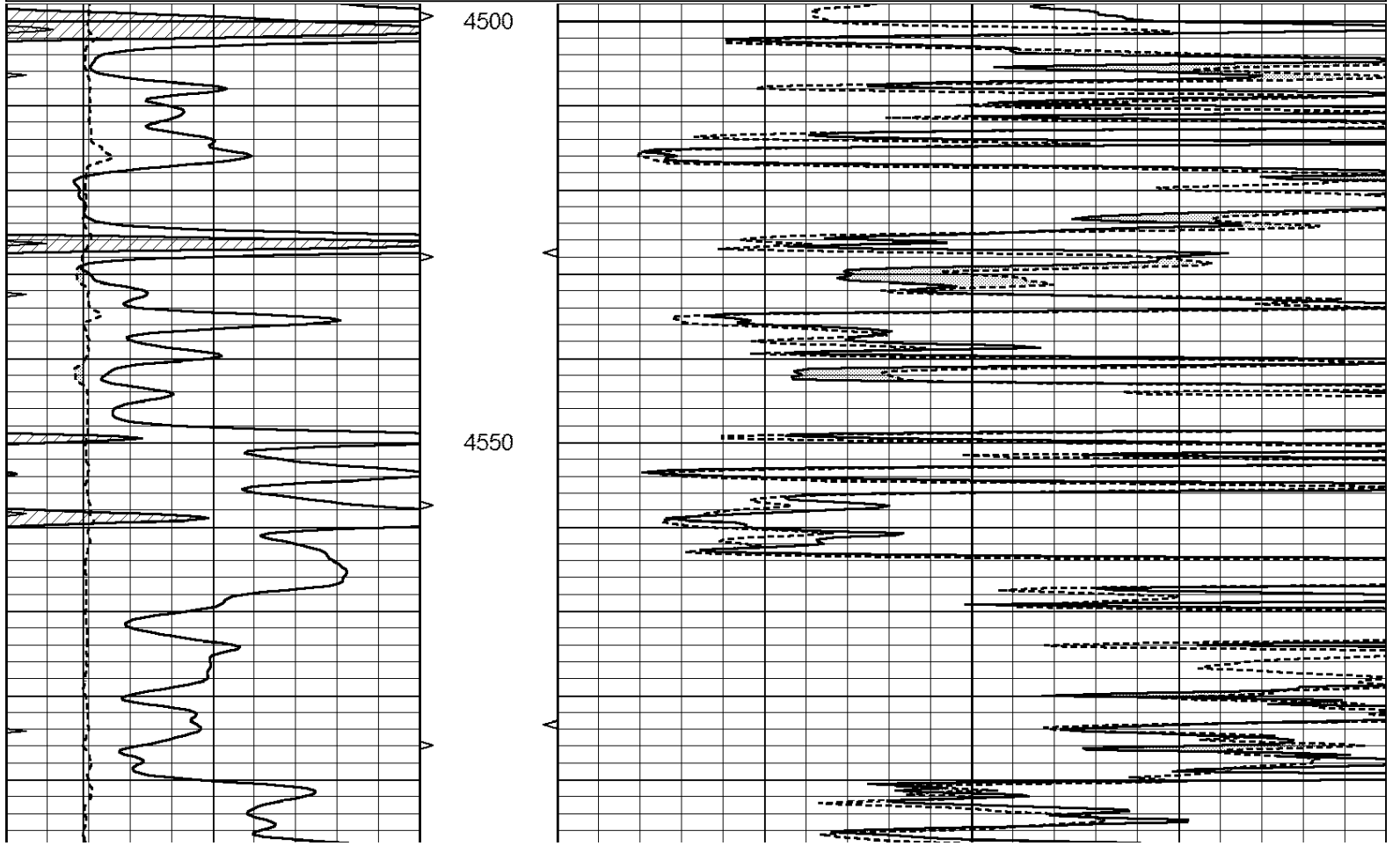


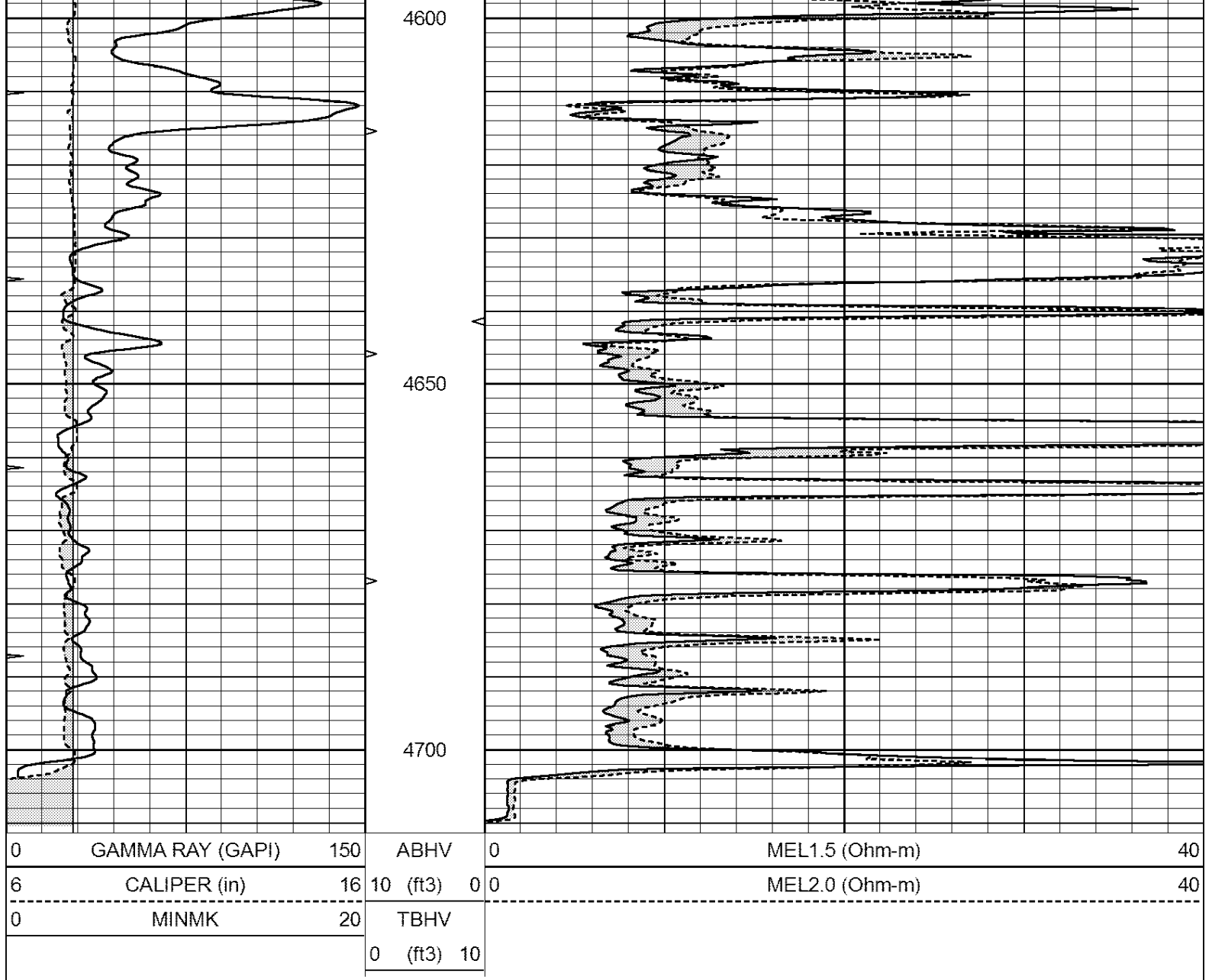
**Casedhole  
Solutions**

# REPEAT SECTION

Database File: 30892ddn.db  
 Dataset Pathname: pass5.1  
 Presentation Format: \_micro  
 Dataset Creation: Tue Feb 09 02:10:25 2016 by Calc Open-Cased 090629  
 Charted by: Depth in Feet scaled 1:240

0	GAMMA RAY (GAPI)	150	ABHV	0	MEL1.5 (Ohm-m)	40
6	CALIPER (in)	16	10 (ft3)	0	MEL2.0 (Ohm-m)	40
0	MINMK	20	TBHV			
			0 (ft3)	10		





**Calibration Report**

Database File: 30892ddn.db  
 Dataset Pathname: pass5.1  
 Dataset Creation: Tue Feb 09 02:10:25 2016 by Calc Open-Cased 090629

**MICRO Calibration Report**

Serial Number:	MICRO6	
Tool Model:	PROBE	
Performed:	Wed Aug 26 00:34:46 2015	
Caliper Calibration:	Gain=3.960	Offset=4.601
References	Low Cal	High Cal
Readings	7.000	14.000
	0.555	2.323
1.5" Calibration:	Gain=38.075	Offset=-0.400
References	Low Cal	High Cal
Readings	0.000	20.000
	0.004	1.196
2" Calibration:	Gain=48.000	Offset=-1.000

References  
Readings

Low Cal  
0.000  
0.006

High Cal  
20.000  
0.913

Gamma Ray Calibration Report

Serial Number: GR6  
Tool Model: OPEN  
Performed: Thu Nov 12 05:47:01 2015

Calibrator Value: 150.0 GAPI

Background Reading: 0.0 cps  
Calibrator Reading: 276.0 cps

Sensitivity: 0.4500 GAPI/cps