



Casedhole Solutions

MICRO LOG

L. D. DRILLING, INC.
#4-31 DARREL
LUNDGREN
GOVE
KANSAS

Company L. D. DRILLING, INC.
Well #4-31 DARREL
Field LUNDGREN
County GOVE State KANSAS

Location: 1800' FWL & 2310' FSL
API #: 15-063-22270-0000
Other Services
CBL/CNL
DIL

SEC 31 TWP 14S RGE 29W
Permanent Datum GROUND LEVEL Elevation 2640
Log Measured From KELLY BUSHING 5' A.G.L.
Drilling Measured From KELLY BUSHING
Elevation
K.B. 2645
D.F. 2643
G.L. 2640

| | |
|------------------------------|---------------|
| Date | 11/8/75 |
| Run Number | TWO |
| Depth Driller | 4420 |
| Depth Logger | 4424 |
| Bottom Logged Interval | 4422 |
| Top Log Interval | 3200 |
| Casing Driller | 8 5/8" @ 314' |
| Casing Logger | 312 |
| Bit Size | 7 7/8" |
| Type Fluid in Hole | CHEMICAL MUD |
| Density / Viscosity | 9.3/53 |
| pH / Fluid Loss | 10.0/9.6 |
| Source of Sample | FLOWLINE |
| Rim @ Meas. Temp | 1.25 @ 72F |
| Rmf @ Meas. Temp | .93 @ 72F |
| Rmc @ Meas. Temp | 1.50 @ 72F |
| Source of Rmf / Rmc | MEASUREMENT |
| Rim @ BHT | .750 @ 120F |
| Time Circulation Stopped | 4.5 HOURS |
| Time Logger on Bottom | 2-15 P.M. |
| Maximum Recorded Temperature | 120F |
| Equipment Number | 22339 |
| Location | HAYS, KANSAS |
| Recorded By | JEFF LUEBBERS |
| Witnessed By | KUM SHOEMAKER |

<<< Fold Here >>>

All interpretations are opinions based on inferences from electrical or other measurements and we cannot and do not guarantee the accuracy or correctness of any interpretation, and we shall not, except in the case of gross or willful negligence on our part, be liable or responsible for any loss, costs, damages, or expenses incurred or sustained by anyone resulting from any interpretation made by any of our officers, agents or employees. These interpretations are also subject to our general terms and conditions set out in our current Price Schedule.

Comments

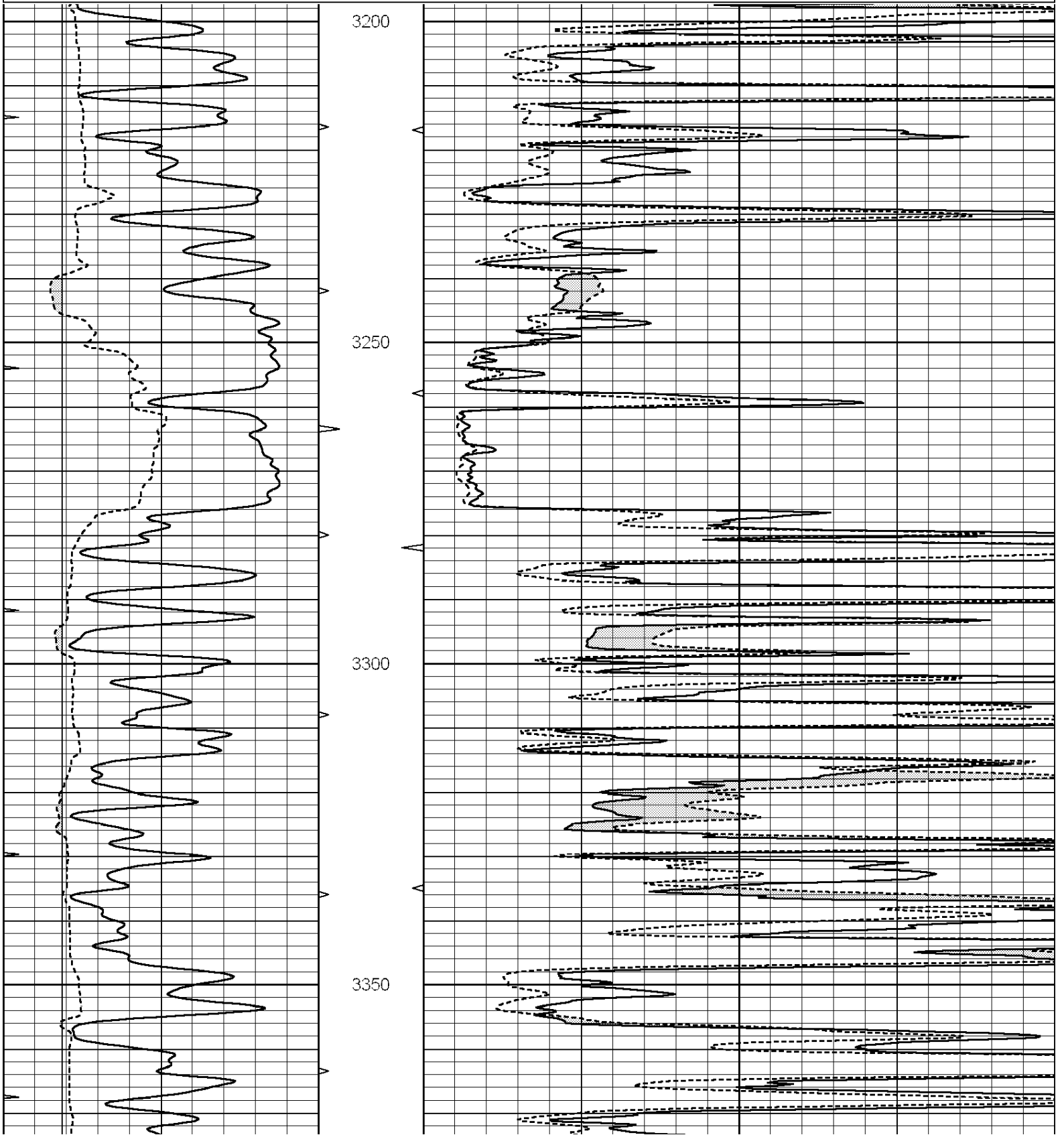
THANK YOU FOR USING C & J ENERGY (CASED HOLE SOLUTIONS) HAYS, KANSAS (785) 628-6395
DIRECTIONS
GOVE, KS., 10S. ON HWY 23 TO "MISSOURI FLATS RD.", 5W. TO "RD. 34", 1S., E. AROUND CURVE, S. IN

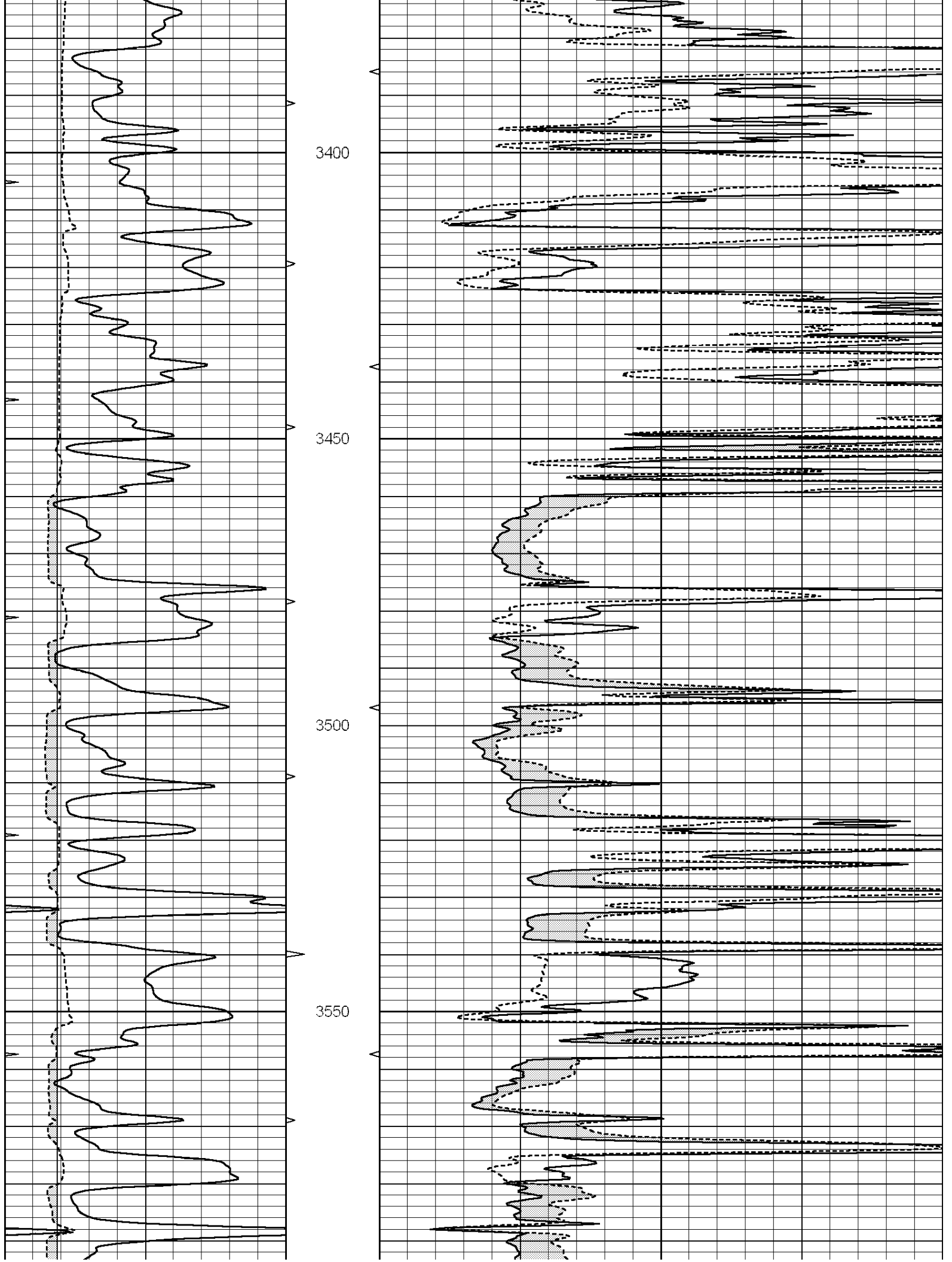


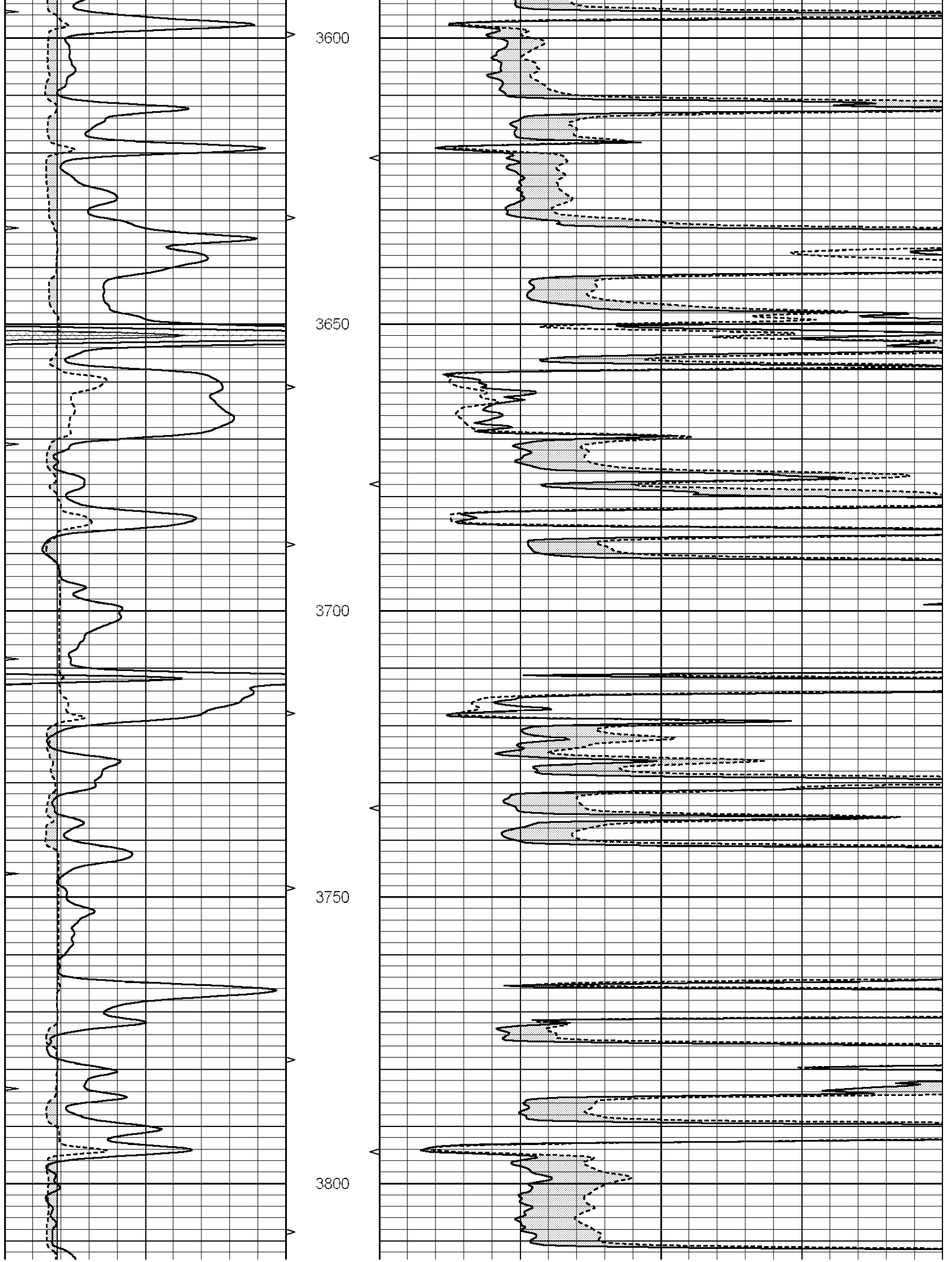
MAIN SECTION

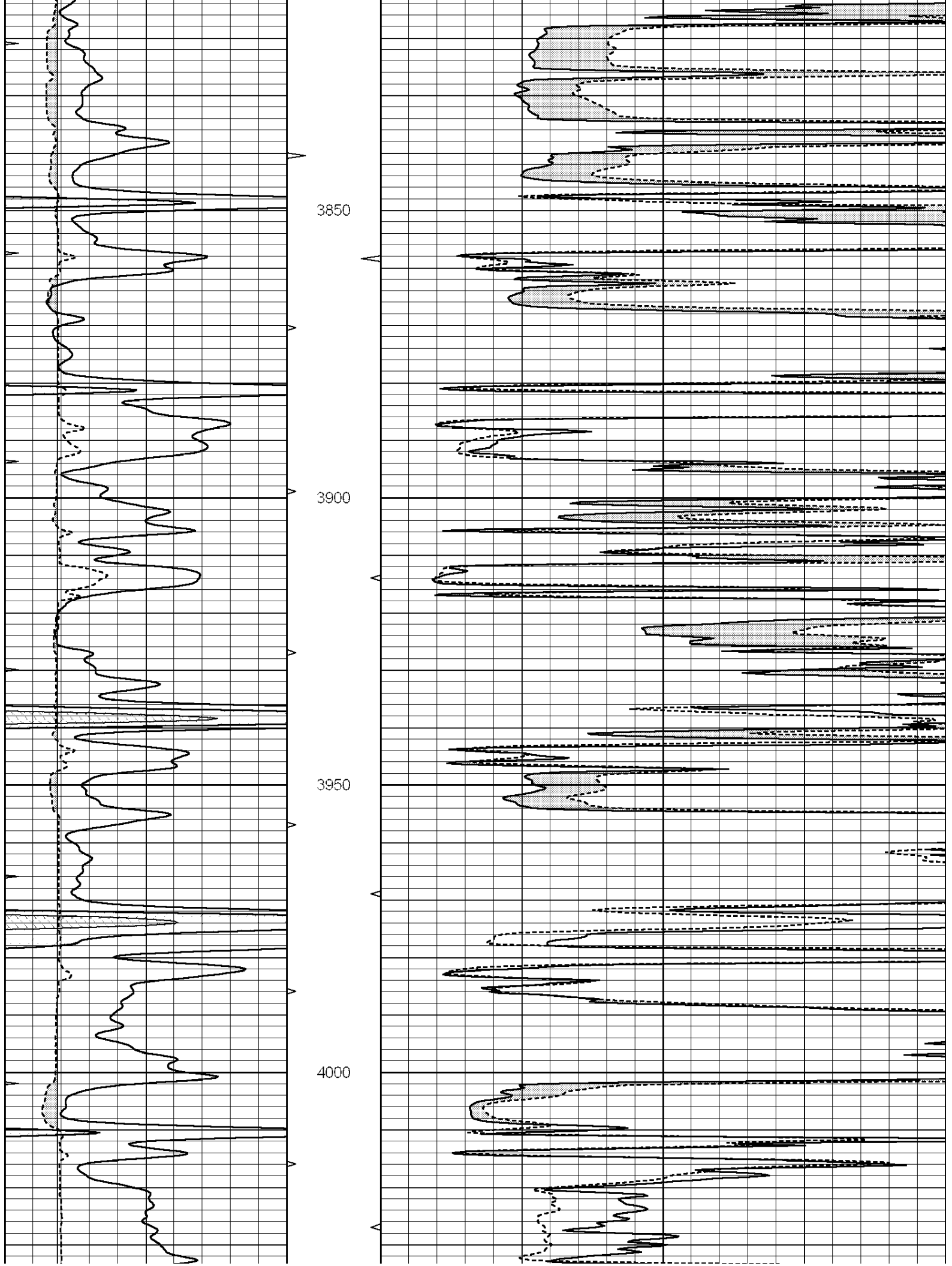
Database File: 26647ddn.db
 Dataset Pathname: pass6.1
 Presentation Format: micro
 Dataset Creation: Sun Nov 08 17:10:05 2015 by Calc SOC 120430
 Charted by: Depth in Feet scaled 1:240

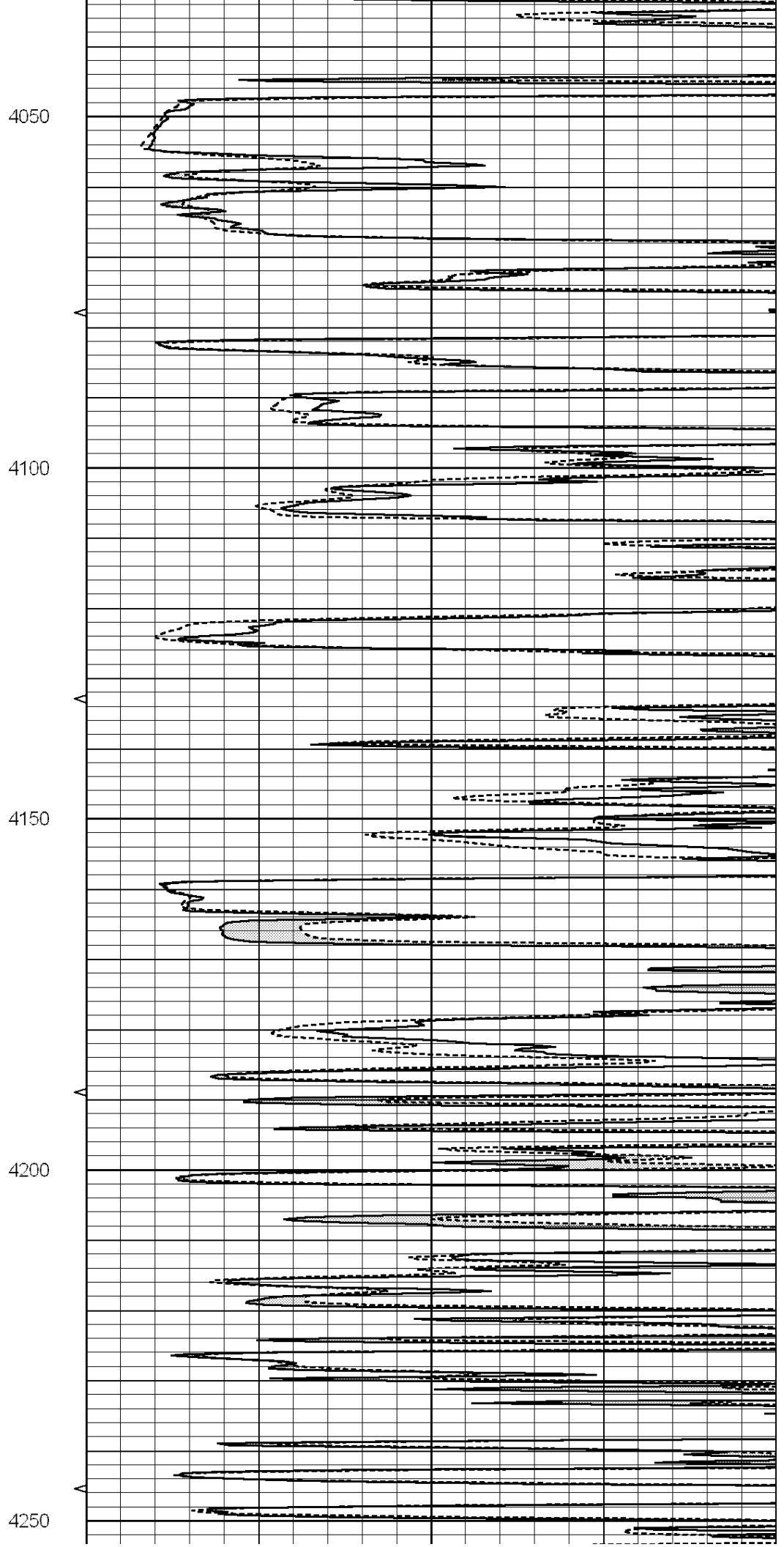
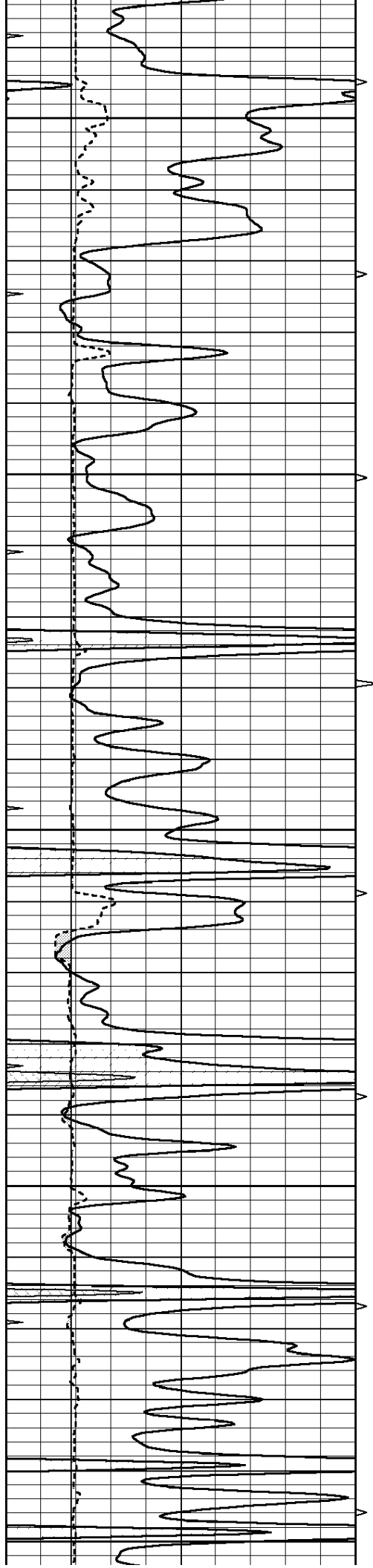
| | | | | | | |
|---|------------------|-----|----------|-----|----------------|----|
| 0 | GAMMA RAY (GAPI) | 150 | ABHV | 0 | MEL1.5 (Ohm-m) | 40 |
| 6 | CALIPER (in) | 16 | 10 (ft3) | 0 0 | MEL 20 (Ohm-m) | 40 |
| 0 | MINMK | 20 | TBHV | | | |
| | | | 0 (ft3) | 10 | | |

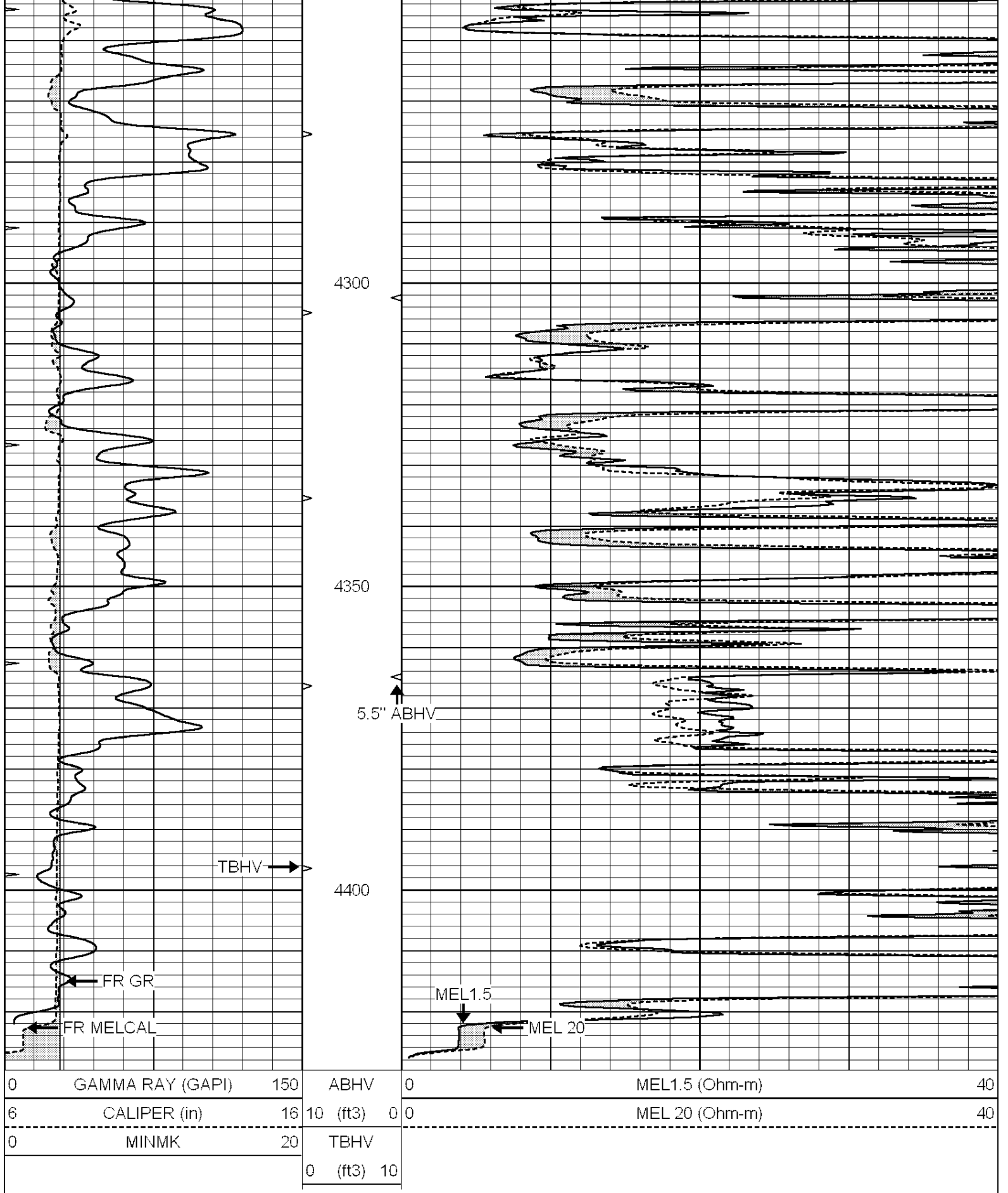






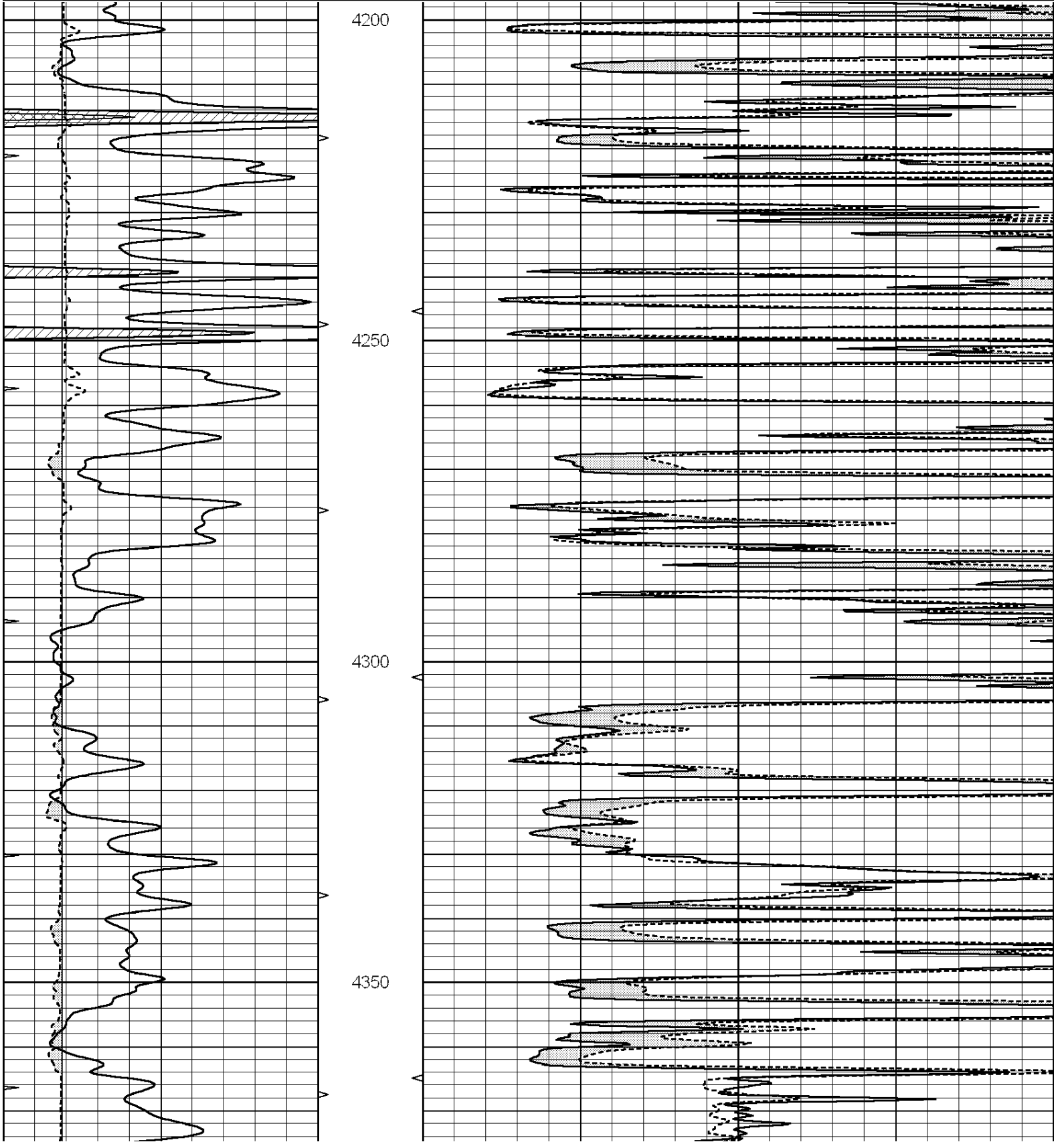


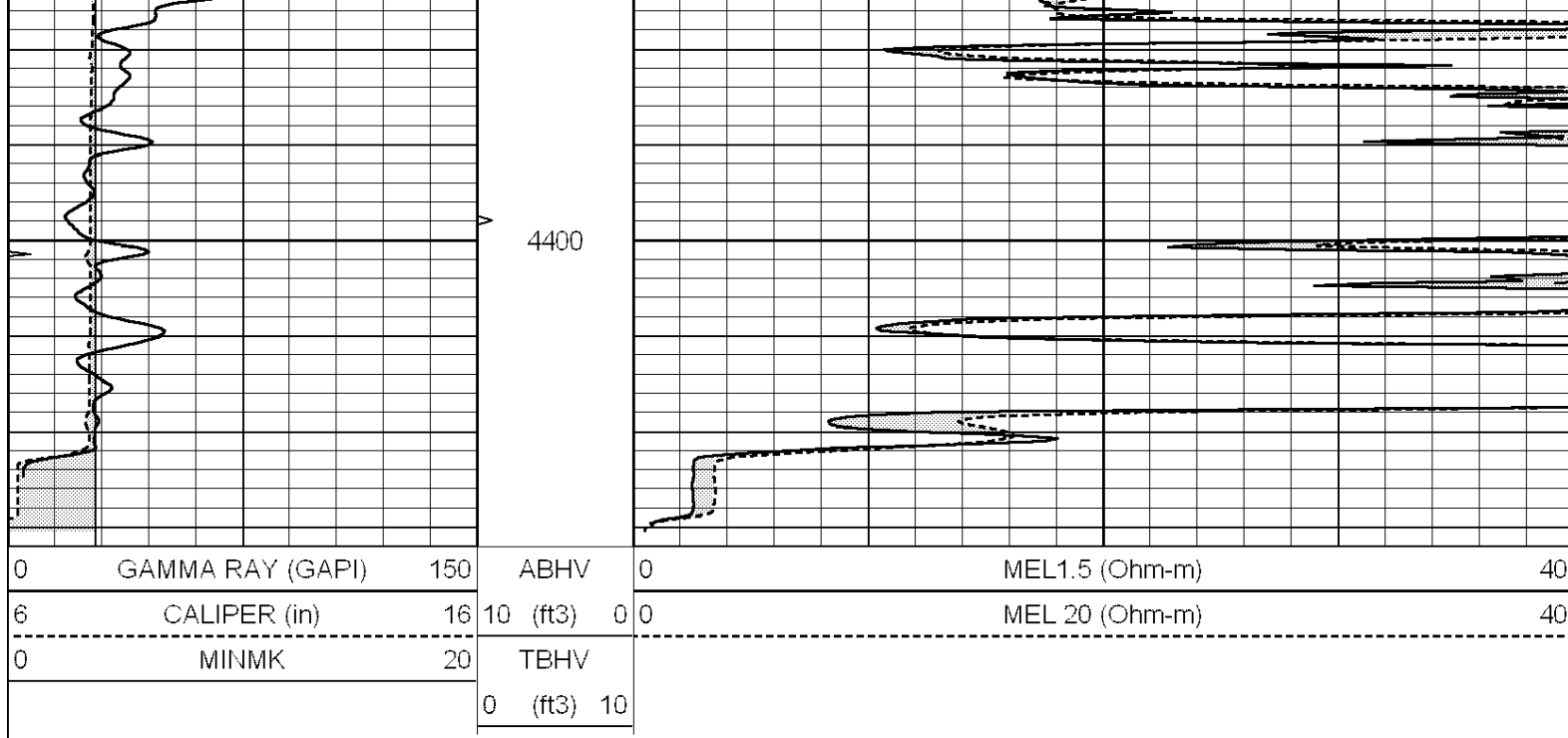




Database File: 26647ddn.db
 Dataset Pathname: pass5.1
 Presentation Format: micro
 Dataset Creation: Sun Nov 08 16:35:10 2015 by Calc SOC 120430
 Charted by: Depth in Feet scaled 1:240

| | | | | | | |
|---|------------------|-----|----------|-----|----------------|----|
| 0 | GAMMA RAY (GAPI) | 150 | ABHV | 0 | MEL1.5 (Ohm-m) | 40 |
| 6 | CALIPER (in) | 16 | 10 (ft3) | 0 0 | MEL 20 (Ohm-m) | 40 |
| 0 | MINMK | 20 | TBHV | | | |
| | | | 0 (ft3) | 10 | | |





Calibration Report

Database File: 26647ddn.db
 Dataset Pathname: pass6.1
 Dataset Creation: Sun Nov 08 17:10:05 2015 by Calc SOC 120430

MICRO Calibration Report

| | | |
|----------------------|--------------------------|--------------|
| Serial Number: | 070910 | |
| Tool Model: | ProbeN | |
| Performed: | Fri Jul 31 04:23:24 2015 | |
| Caliper Calibration: | Gain=4.517 | Offset=0.646 |
| References | Low Cal | High Cal |
| Readings | 7.300 | 15.000 |
| | 1.473 | 3.178 |
| 1.5" Calibration: | Gain=35.000 | Offset=0.800 |
| References | Low Cal | High Cal |
| Readings | 0.000 | 20.000 |
| | 0.000 | 1.216 |
| 2" Calibration: | Gain=42.000 | Offset=0.500 |
| References | Low Cal | High Cal |
| Readings | 0.000 | 20.000 |
| | 0.002 | 1.053 |

Gamma Ray Calibration Report

| | | |
|---------------------|--------------------------|----------|
| Serial Number: | 070559 | |
| Tool Model: | OPEN_GR | |
| Performed: | Sun Nov 08 16:22:24 2015 | |
| Calibrator Value: | 1.0 | GAPI |
| Background Reading: | 0.0 | cps |
| Calibrator Reading: | 1.0 | cps |
| Sensitivity: | 0.2200 | GAPI/cps |