



Casedhole Solutions

DUAL INDUCTION LOG

Company L. D. DRILLING, INC.
Well #4-31 DARREL
Field LUNDGREN
County GOVE
State KANSAS

Company L. D. DRILLING, INC.
Well #4-31 DARREL
Field LUNDGREN
County GOVE State KANSAS

Location: API # : 15-063-22270-0000
1800' FWL & 2310' FSL
SEC 31 TWP 14S RGE 29W
Permanent Datum GROUND LEVEL Elevation 2640
Log Measured From KELLY BUSHING 5' A.G.L.
Drilling Measured From KELLY BUSHING
Other Services CDL/CNL MEL
Elevation K.B. 2645 D.F. 2643 G.L. 2640

Date	11/8/75
Run Number	ONE
Depth Driller	4420
Depth Logger	4424
Bottom Logged Interval	4422
Top Log Interval	00
Casing Driller	8 5/8"@314'
Casing Logger	312
Bit Size	7 7/8"
Type Fluid in Hole	CHEMICAL MUD
Density / Viscosity	9.3/53
pH / Fluid Loss	10.0/9.6
Source of Sample	FLOWLINE
Rin @ Meas. Temp	1.25@72F
Rmf @ Meas. Temp	.93@72F
Rmc @ Meas. Temp	1.50@72F
Source of Rmf / Rmc	MEASUREMENT
Rim @ BHT	.750@120F
Time Circulation Stopped	2.5 HOURS
Time Logger on Bottom	2:15 P.M.
Maximum Recorded Temperature	120F
Equipment Number	22339
Location	HAYS, KANSAS
Recorded By	JEFF LUEBBERS
Witnessed By	KUM SHOEMAKER

<<< Fold Here >>>

All interpretations are opinions based on inferences from electrical or other measurements and we cannot and do not guarantee the accuracy or correctness of any interpretation, and we shall not, except in the case of gross or willful negligence on our part, be liable or responsible for any loss, costs, damages, or expenses incurred or sustained by anyone resulting from any interpretation made by any of our officers, agents or employees. These interpretations are also subject to our general terms and conditions set out in our current Price Schedule.

Comments

THANK YOU FOR USING C & J ENERGY (CASED HOLE SOLUTIONS) HAYS, KANSAS (785) 628-6395
DIRECTIONS
GOVE, KS., 10S. ON HWY 23 TO "MISSOURI FLATS RD.", 5W. TO "RD. 34", 1S., E. AROUND CURVE, S. IN



MAIN SECTION

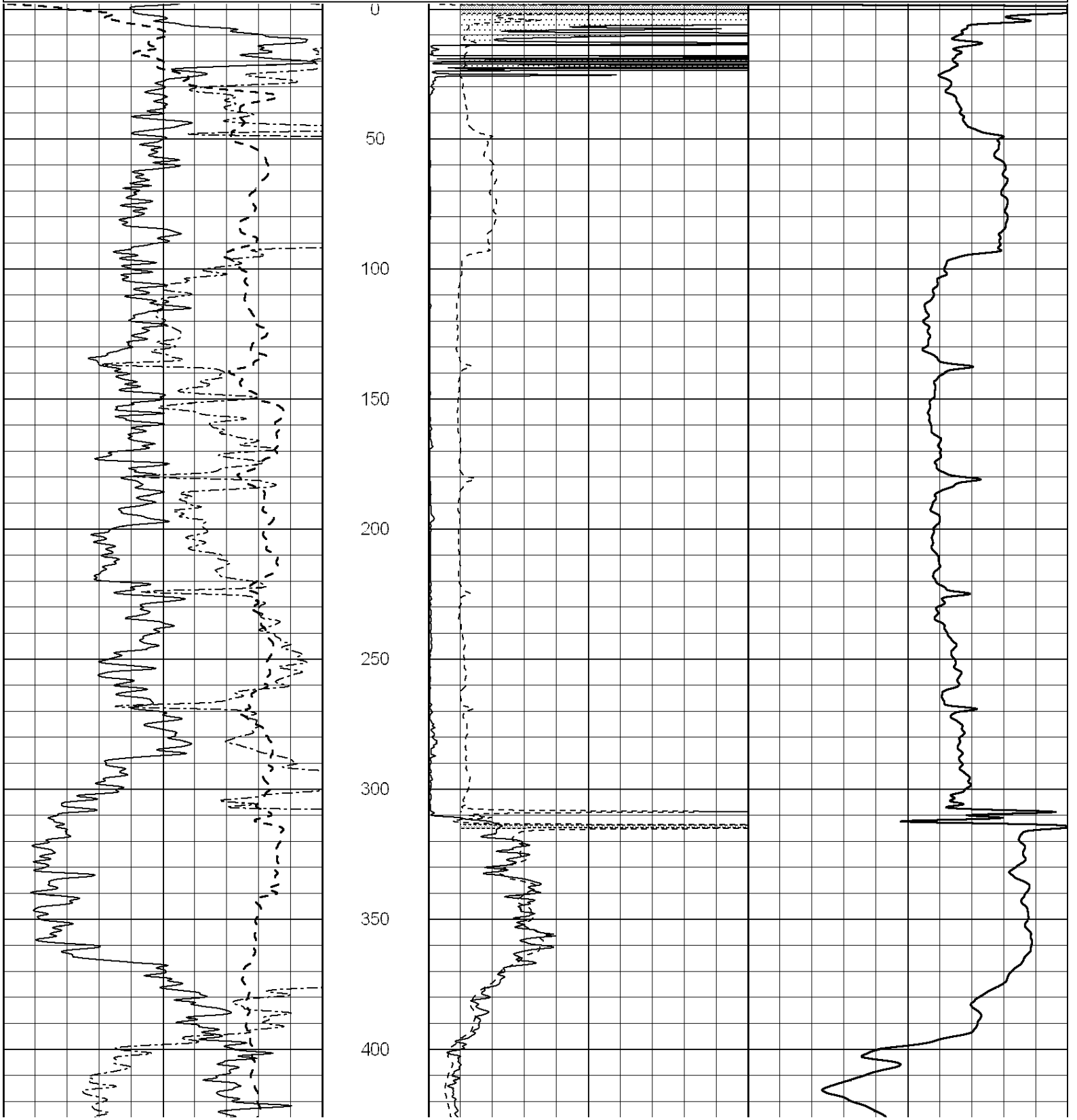
Database File: 26647ddn.db
 Dataset Pathname: pass3.6
 Presentation Format: dil2
 Dataset Creation: Sun Nov 08 15:44:44 2015
 Charted by: Depth in Feet scaled 1:600

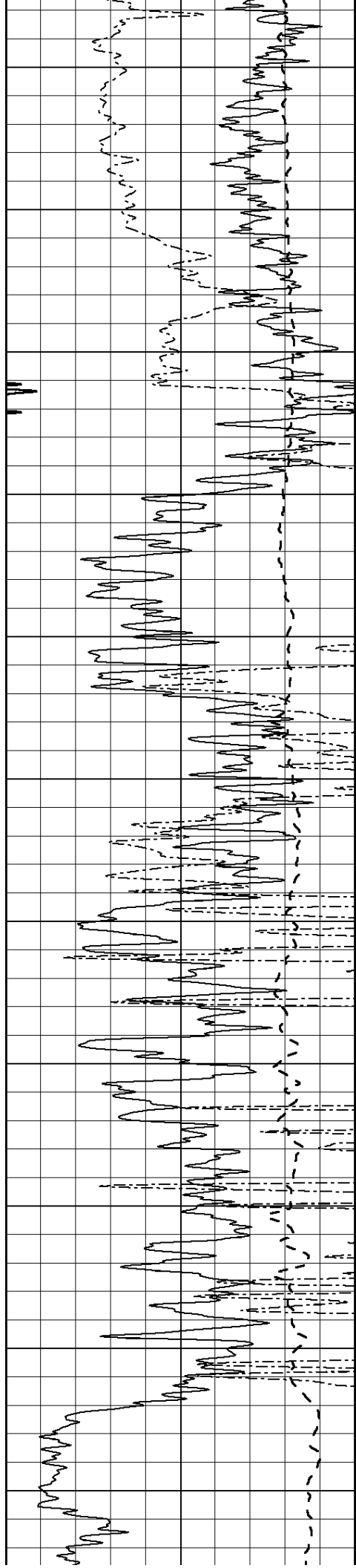
0	Gamma Ray (GAPI)	150
-100	SP (mV)	100
0	RWA (Ohm-m)	1

0	RLL3 (Ohm-m)	50
0	RILD (Ohm-m)	50

1000	CILD (mmho/m)	0
------	---------------	---

50	RILD X10 (Ohm-m)	500
50	RLL3 X10 (Ohm-m)	500





450

500

550

600

650

700

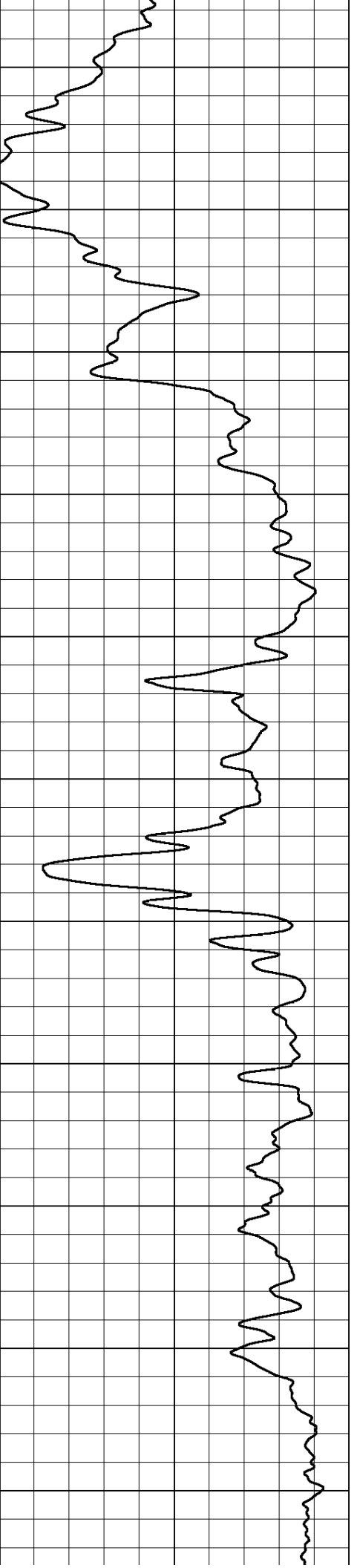
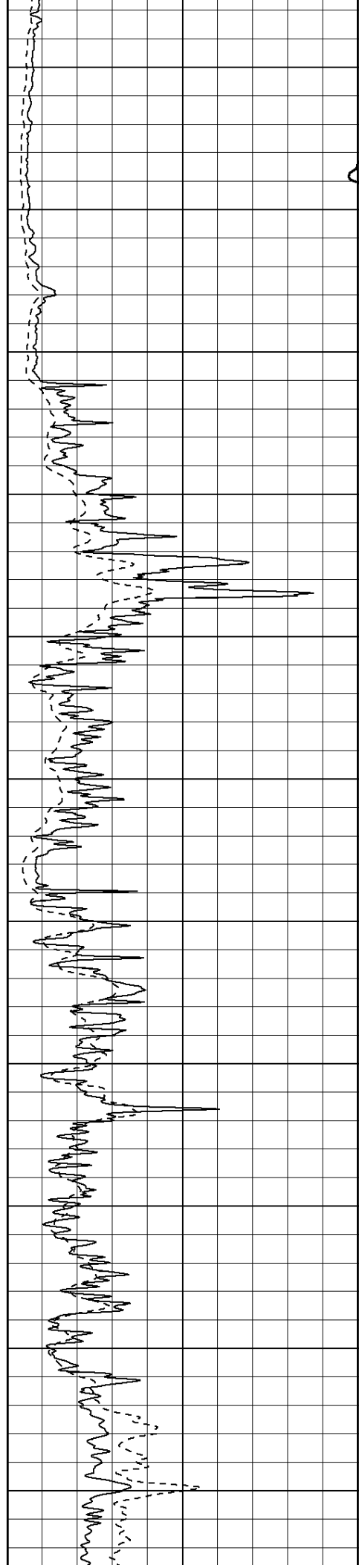
750

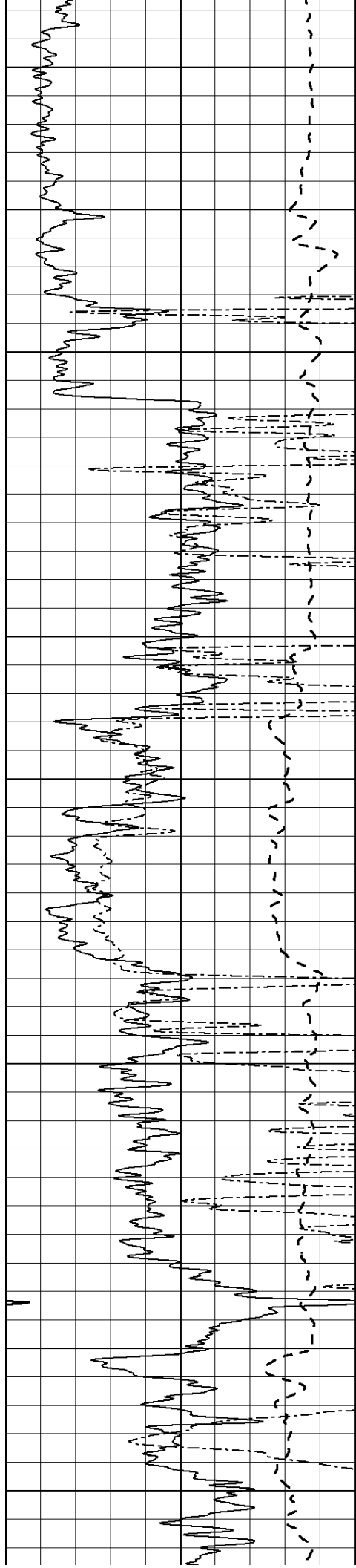
800

850

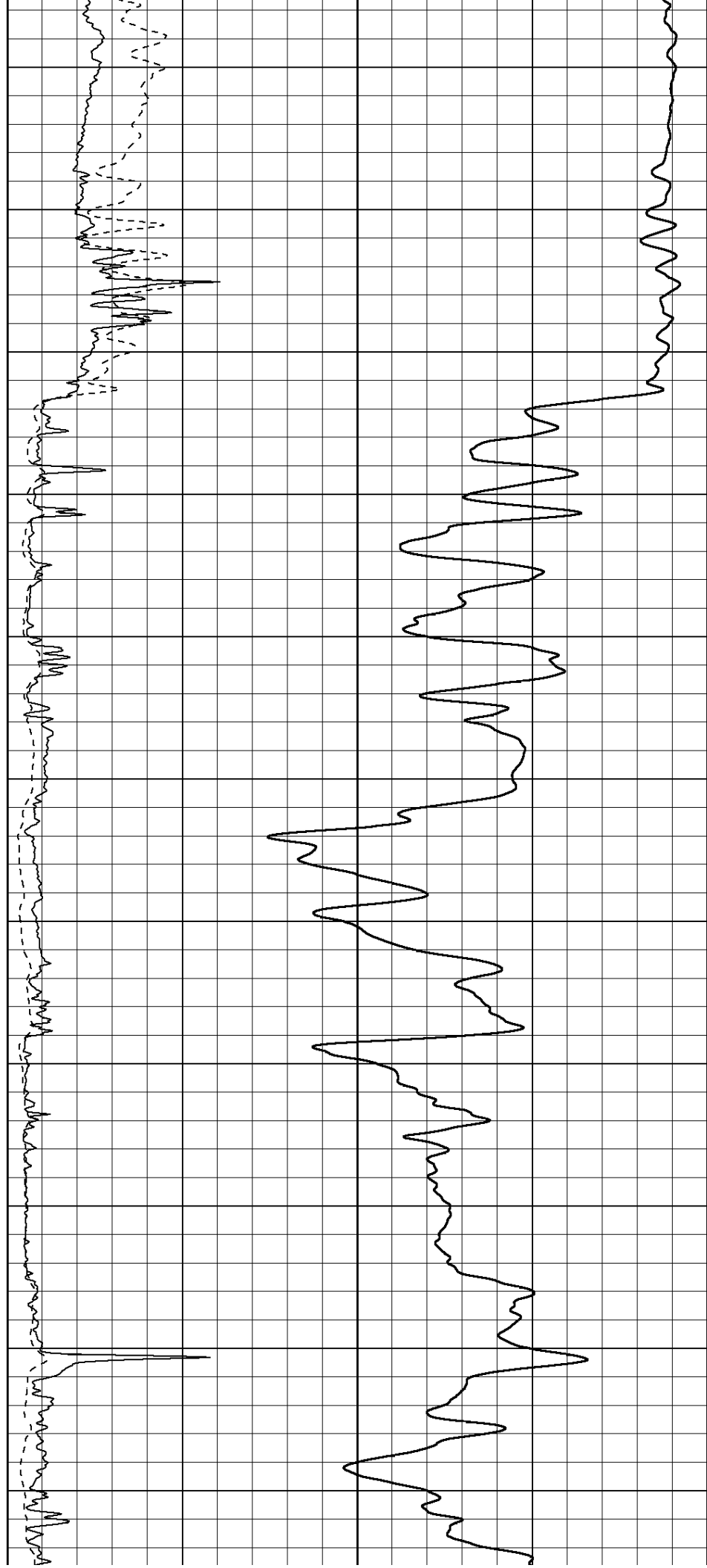
900

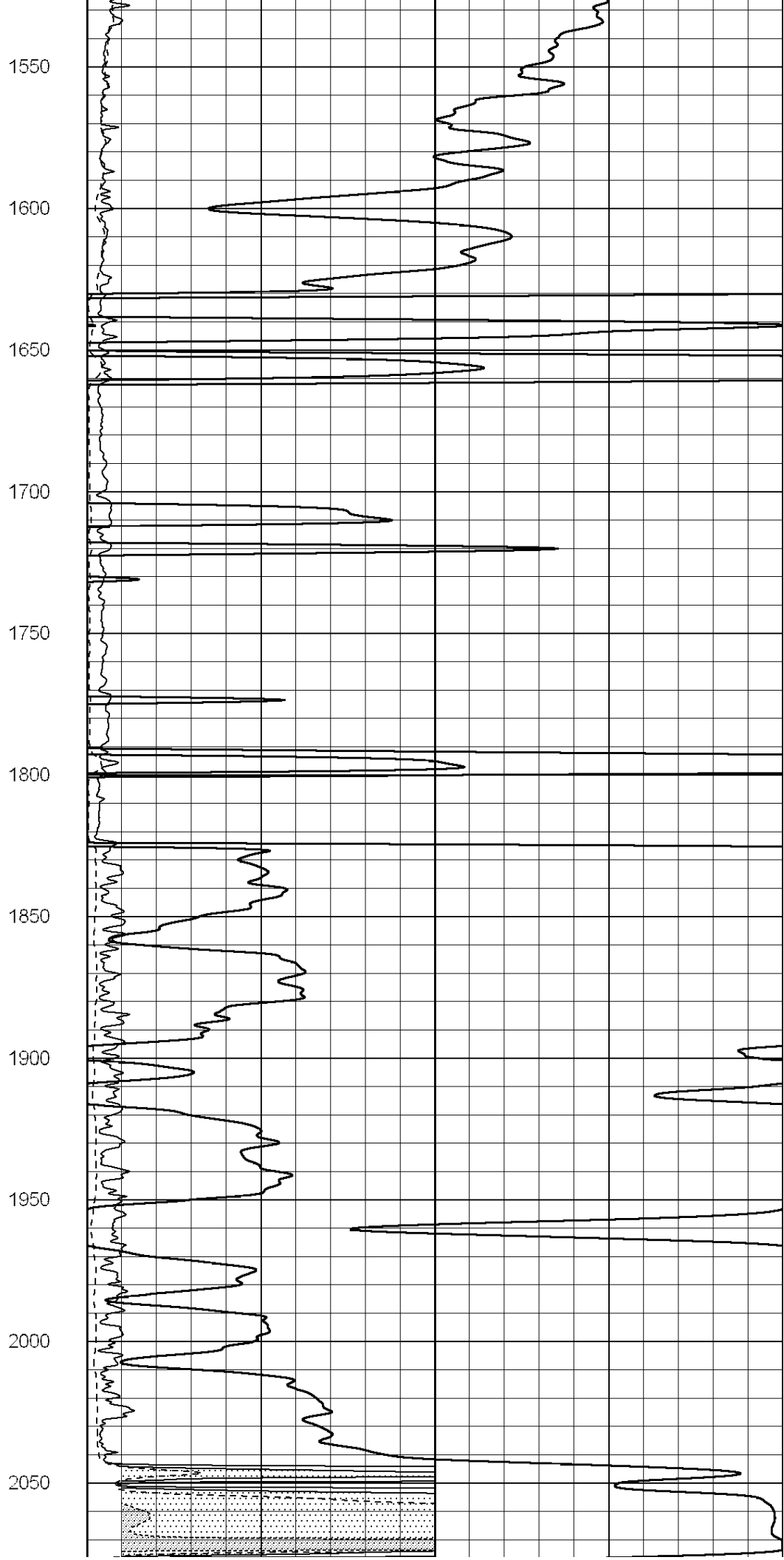
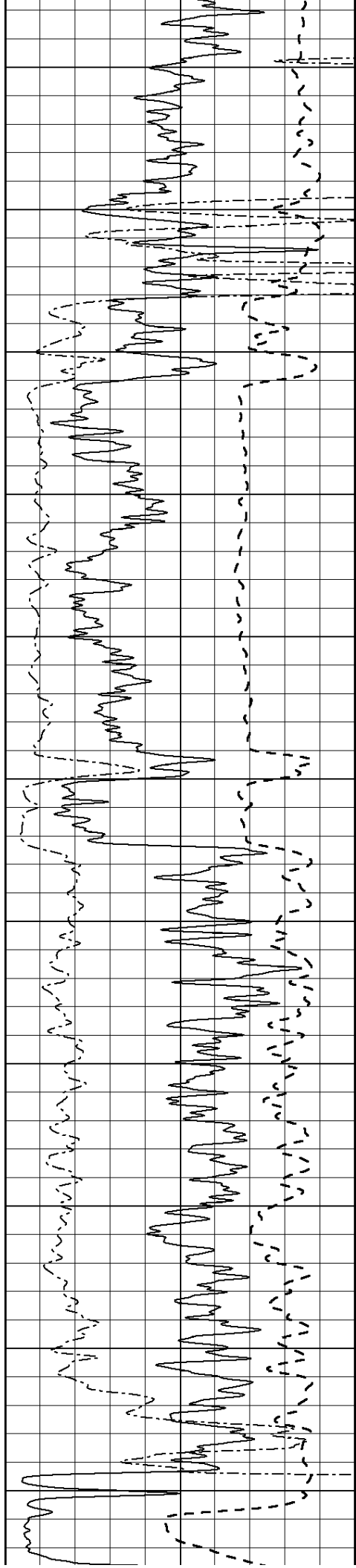
950

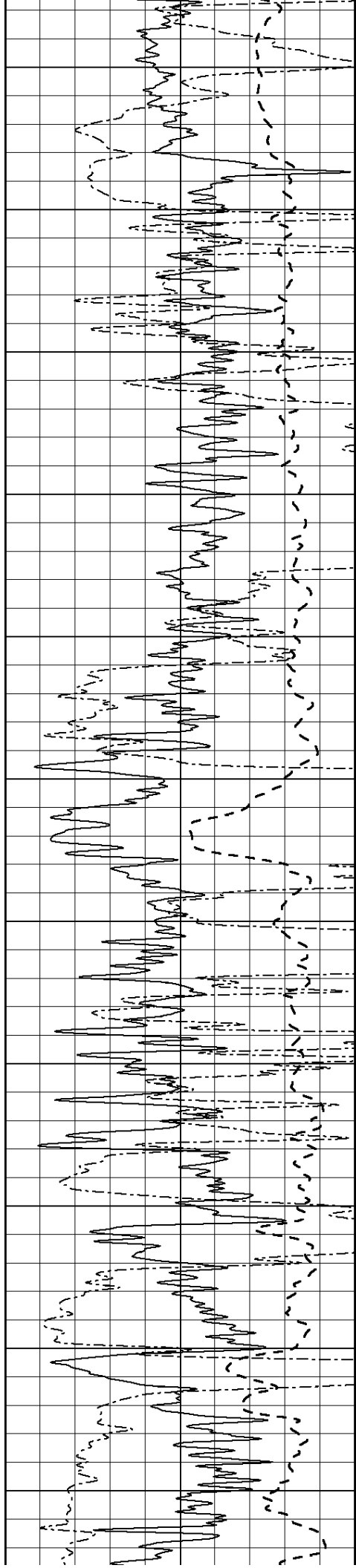




1000
1050
1100
1150
1200
1250
1300
1350
1400
1450
1500







2100

2150

2200

2250

2300

2350

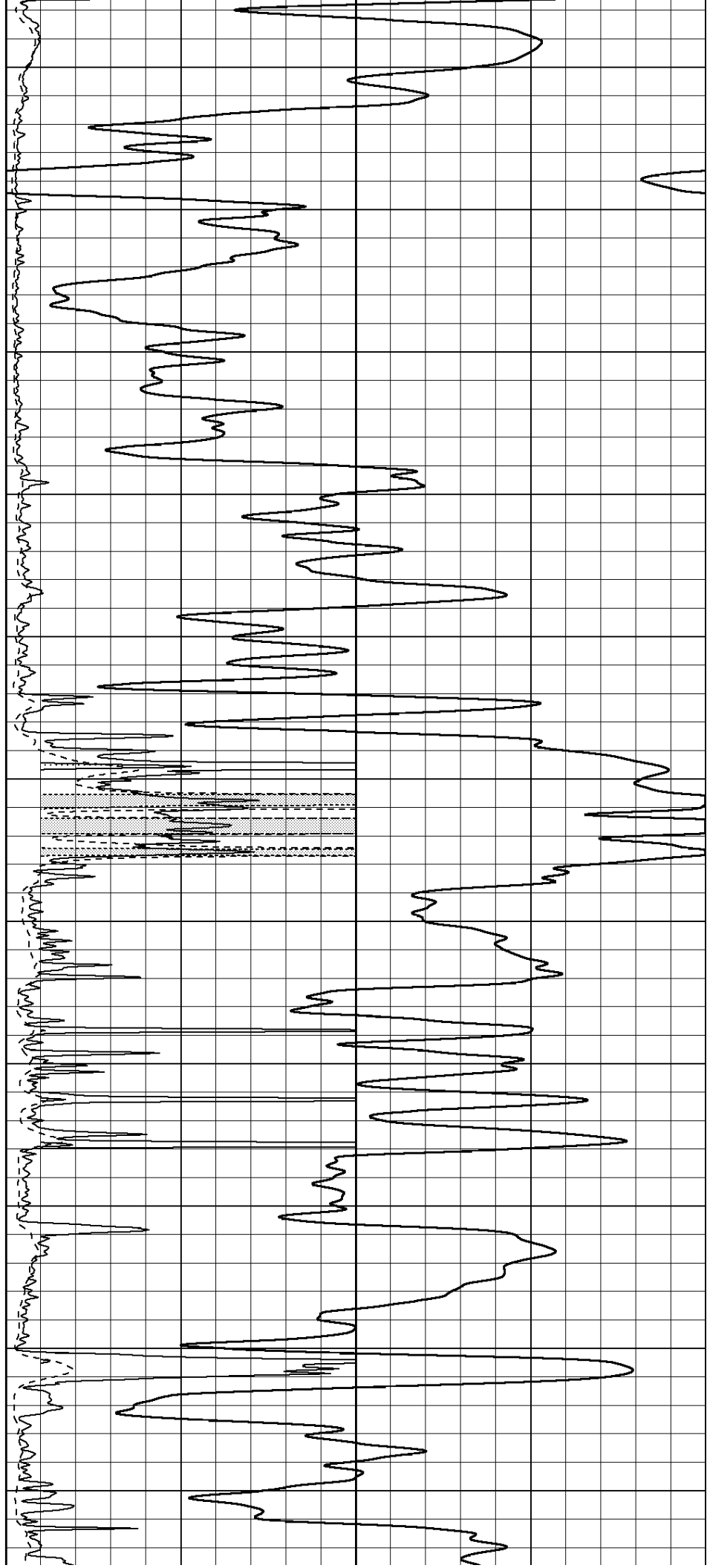
2400

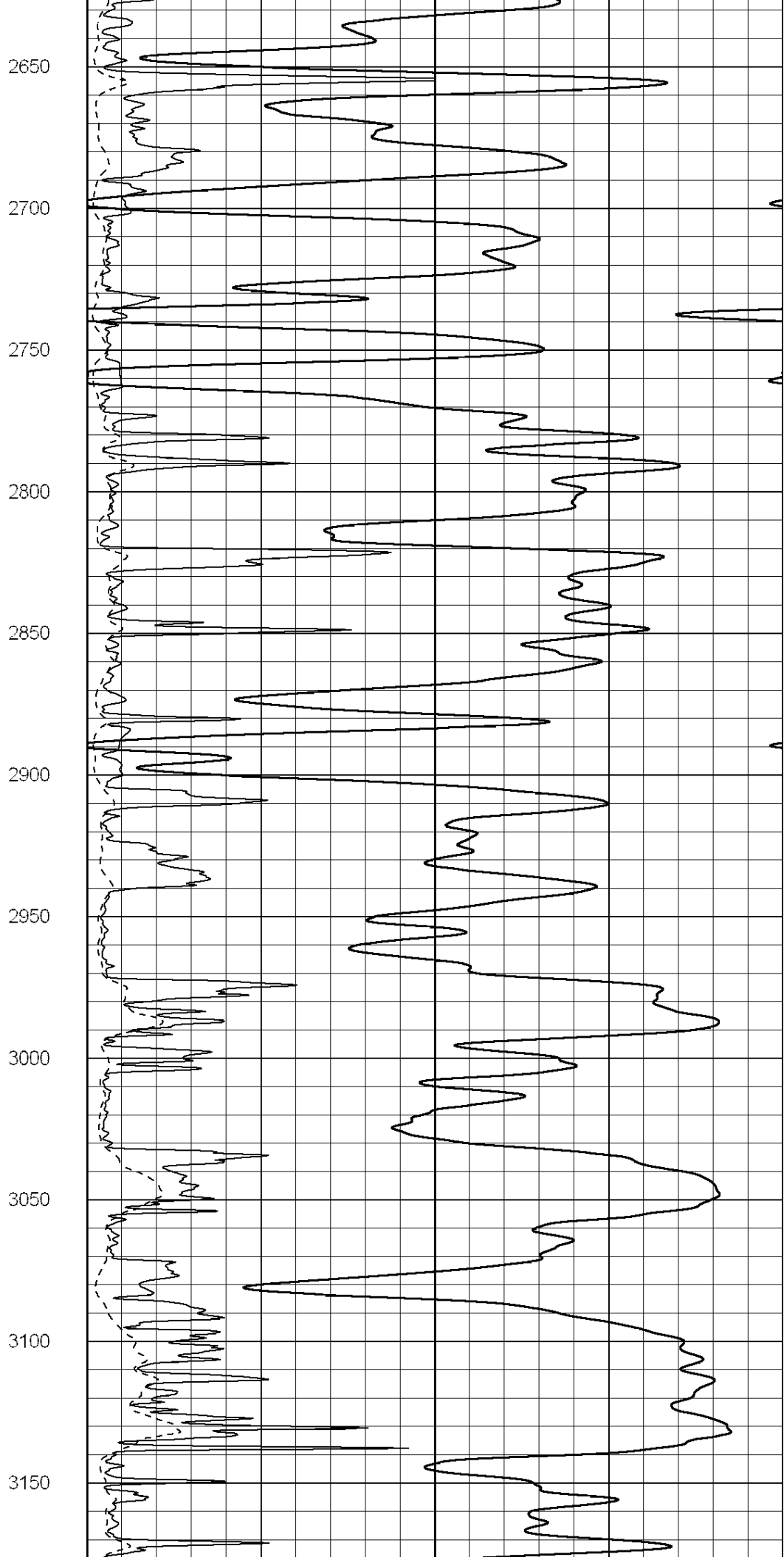
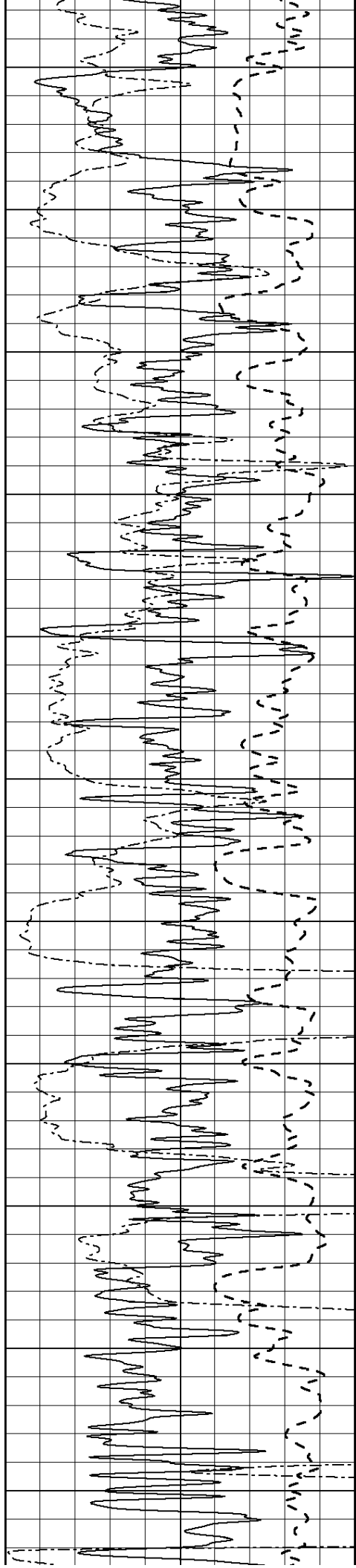
2450

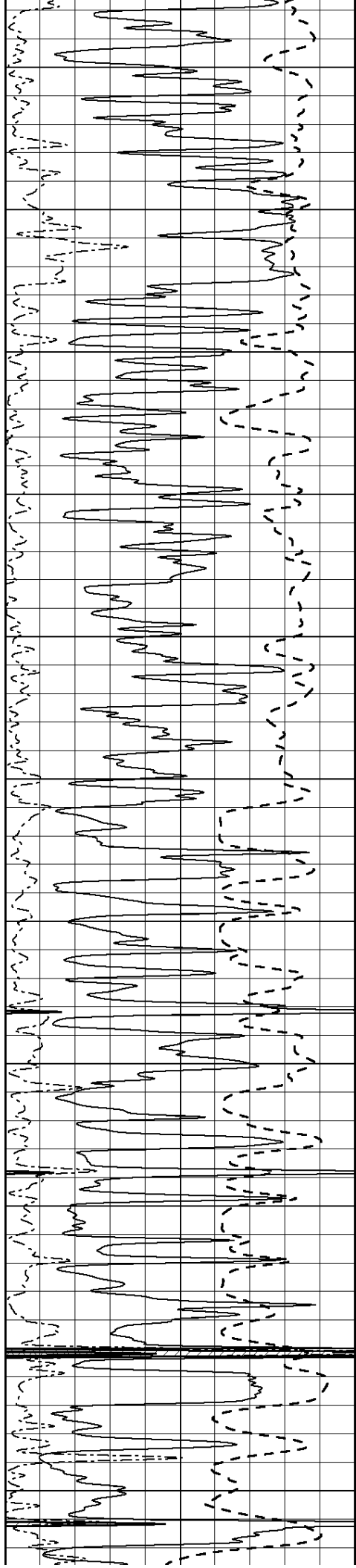
2500

2550

2600







3200

3250

3300

3350

3400

3450

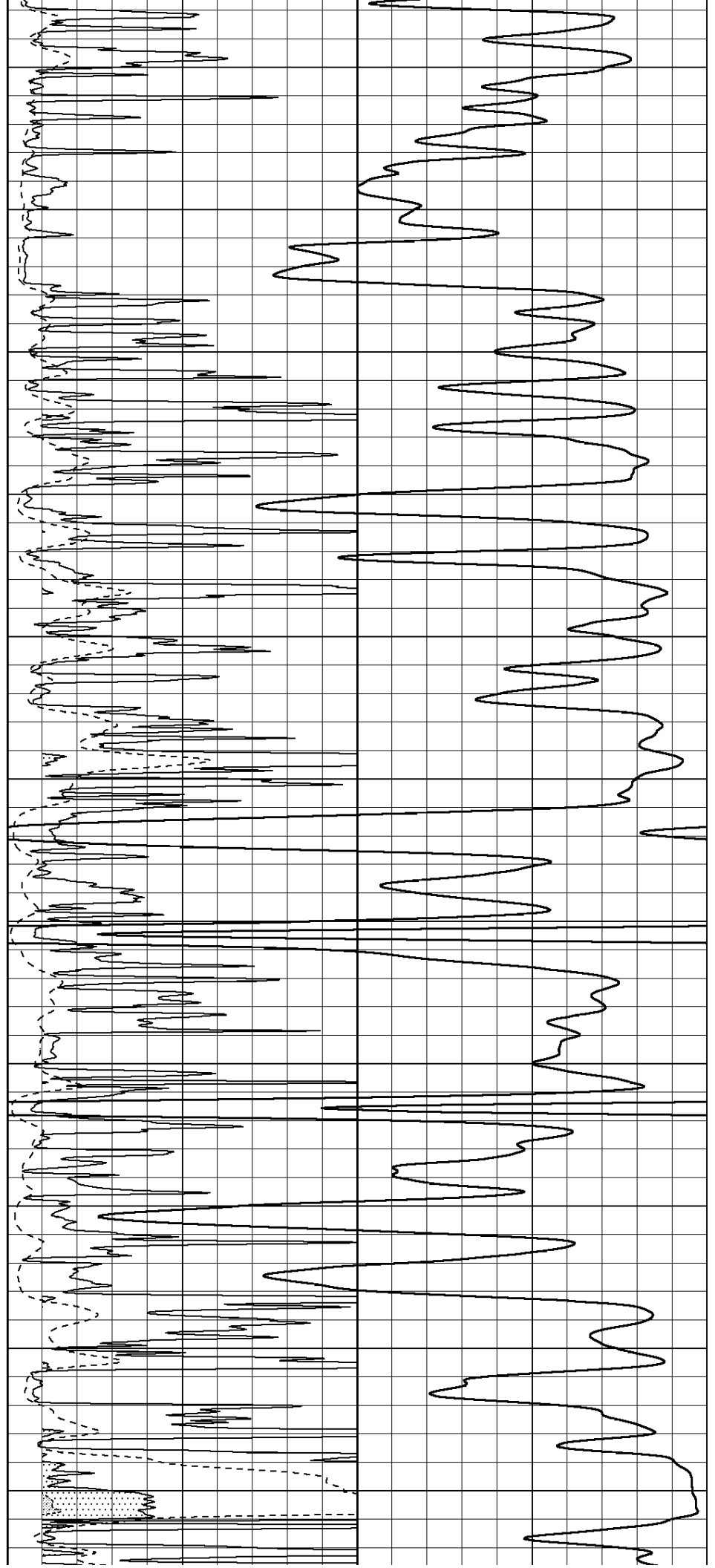
3500

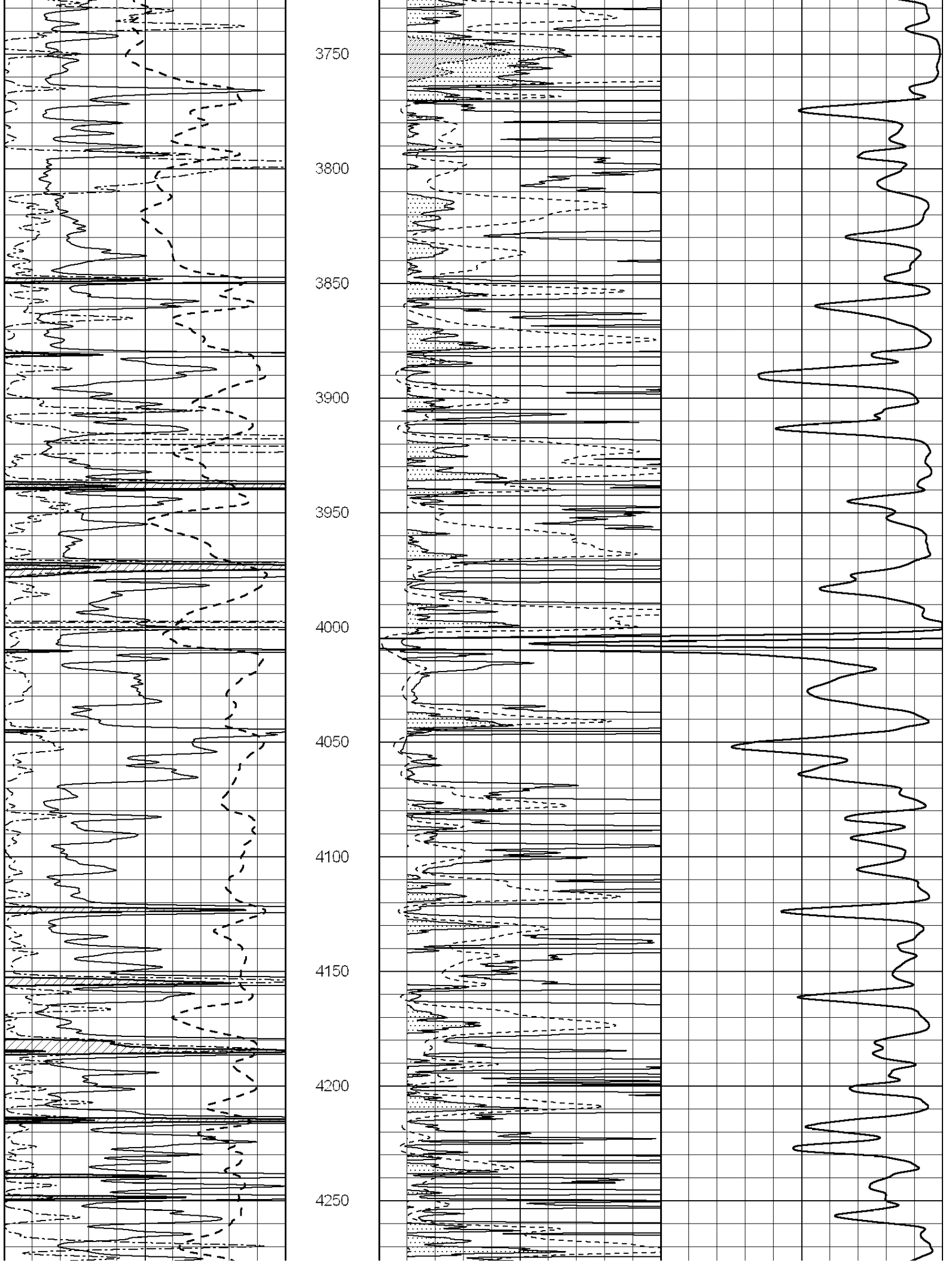
3550

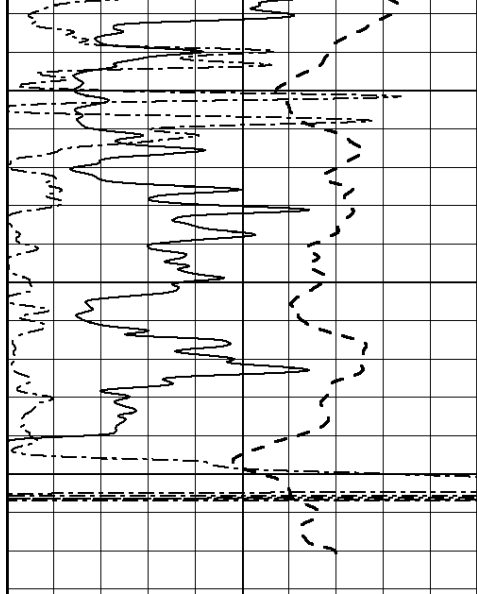
3600

3650

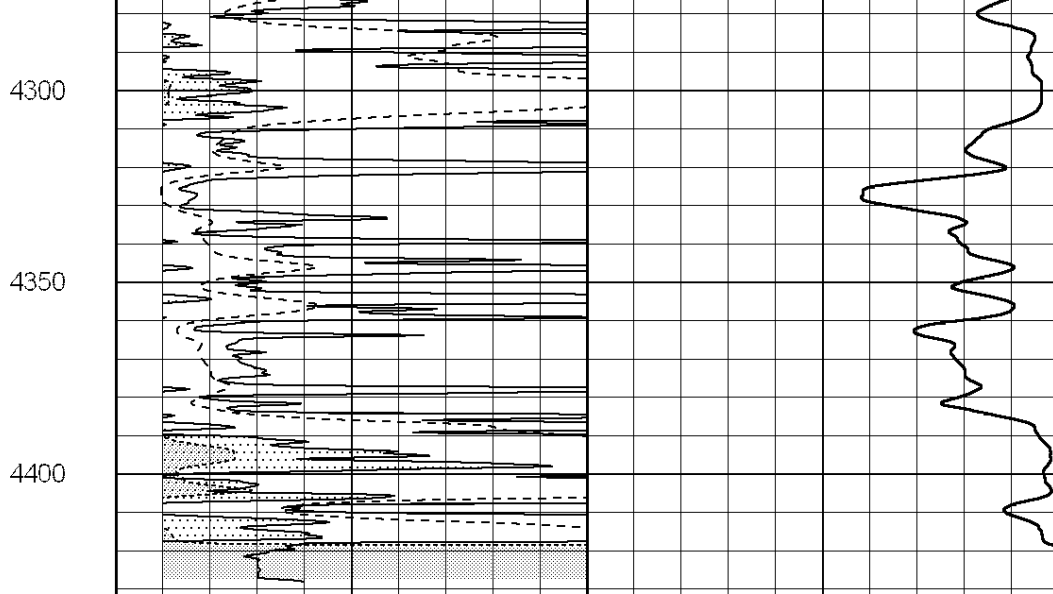
3700







0	Gamma Ray (GAPI)	150
-100	SP (mV)	100
0	RWA (Ohm-m)	1



0	RLL3 (Ohm-m)	50
0	RILD (Ohm-m)	50
1000	CILD (mmho/m)	0
50	RILD X10 (Ohm-m)	500
50	RLL3 X10 (Ohm-m)	500



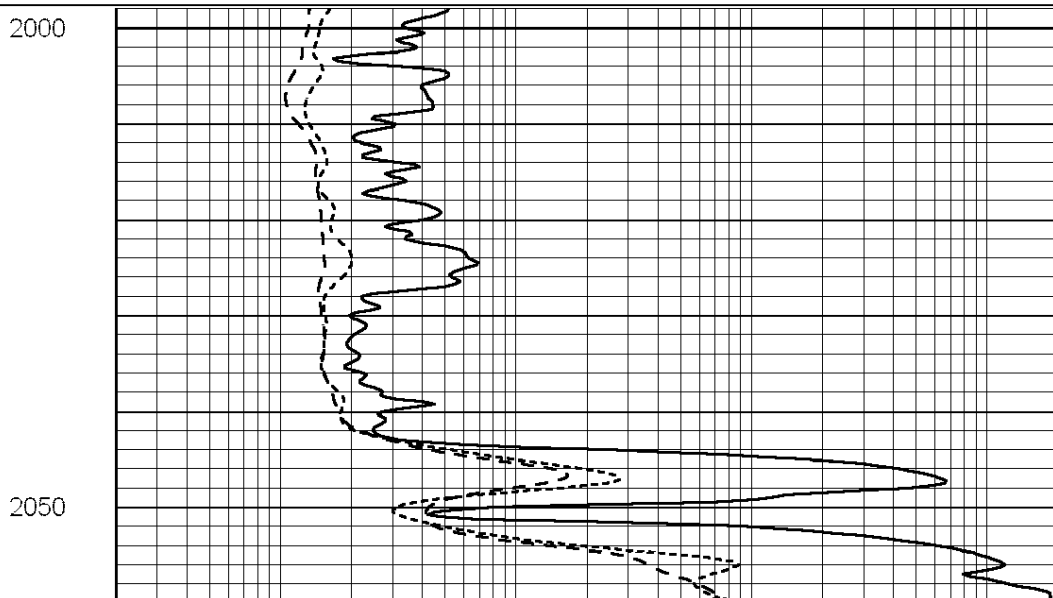
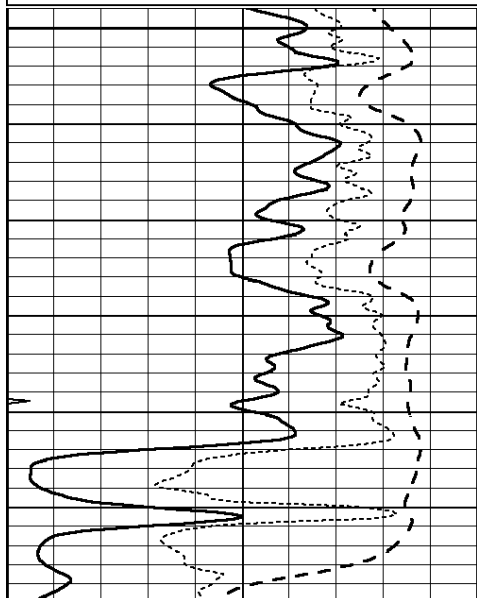
**Casedhole
Solutions**

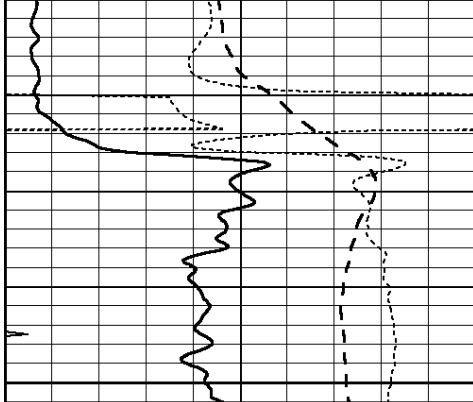
ANHYDRITE

Database File: 26647ddn.db
 Dataset Pathname: pass3.7
 Presentation Format: _dil
 Dataset Creation: Sun Nov 08 15:44:58 2015
 Charted by: Depth in Feet scaled 1:240

0	GAMMA RAY (GAPI)	150
-100	SP (mV)	100
-250	Rxo/Rt	50
0	MINMK	20

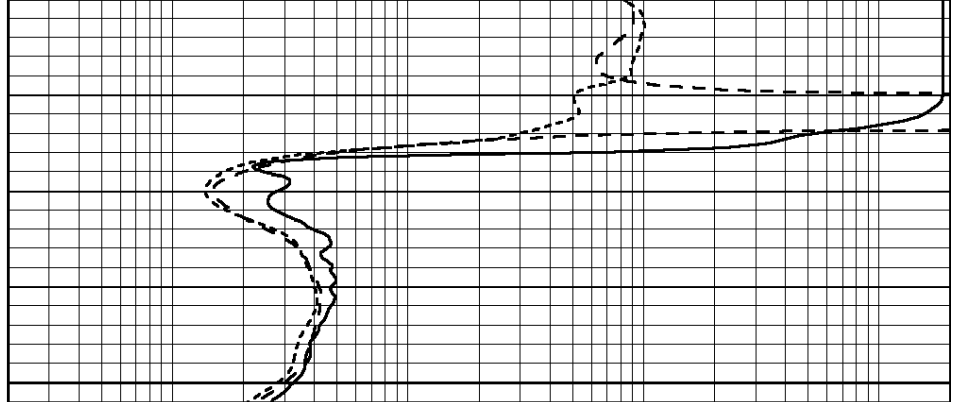
0.2	SHALLOW GUARD (Ohm-m)	2000
0.2	DEEP INDUCTION (Ohm-m)	2000
0.2	MEDIUM INDUCTION (Ohm-m)	2000





2100

0	GAMMA RAY (GAPI)	150
-100	SP (mV)	100
-250	Rxo/Rt	50
0	MINMK	20



0.2	SHALLOW GUARD (Ohm-m)	2000
0.2	DEEP INDUCTION (Ohm-m)	2000
0.2	MEDIUM INDUCTION (Ohm-m)	2000



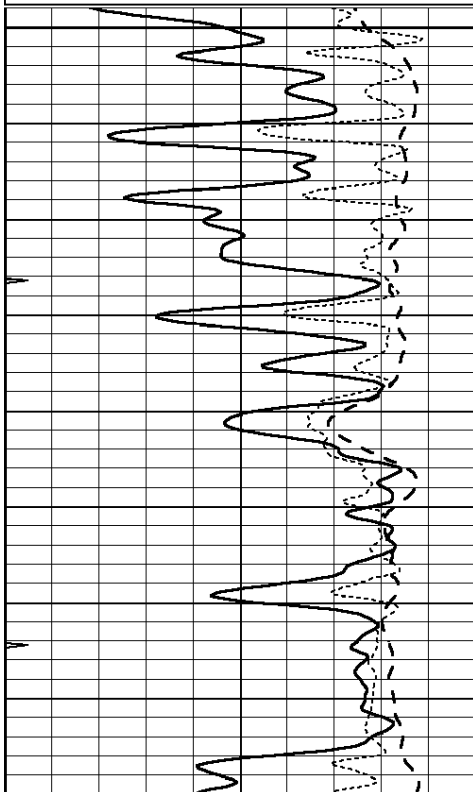
**Casedhole
Solutions**

MAIN SECTION

Database File: 26647ddn.db
 Dataset Pathname: pass3.6
 Presentation Format: dil
 Dataset Creation: Sun Nov 08 15:44:44 2015
 Charted by: Depth in Feet scaled 1:240

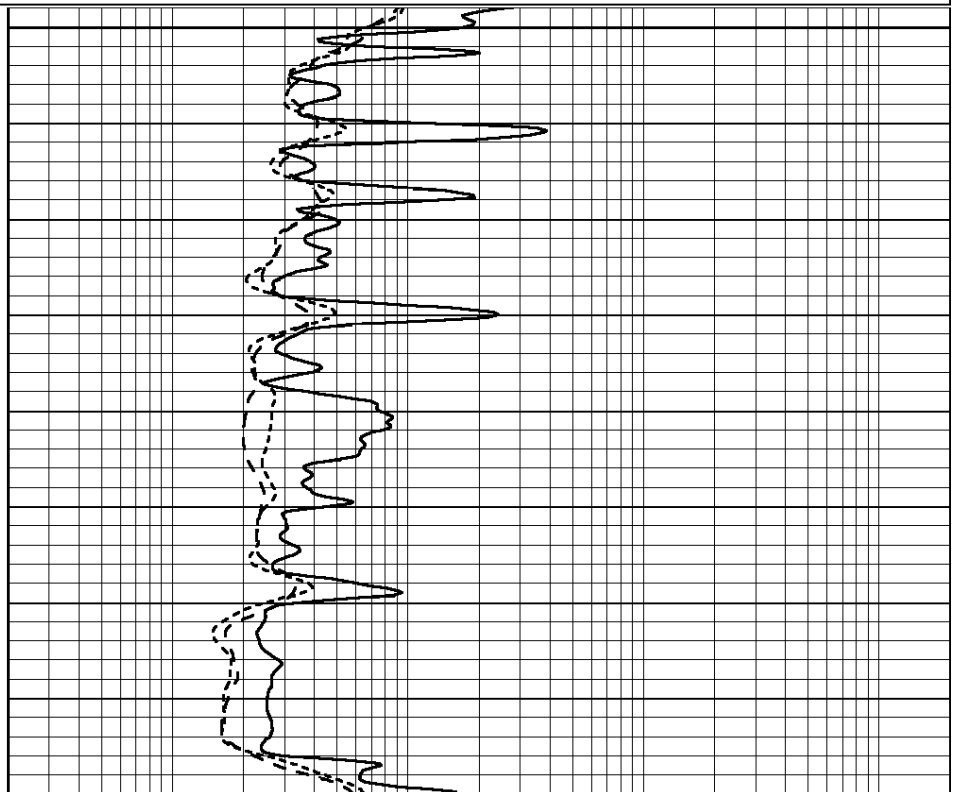
0	GAMMA RAY (GAPI)	150
-100	SP (mV)	100
-250	Rxo/Rt	50
0	MINMK	20

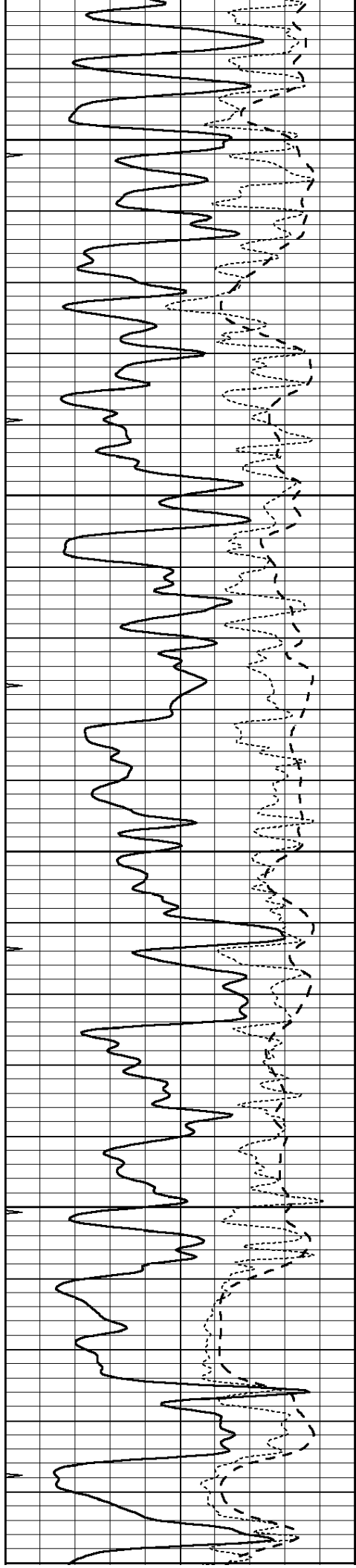
0.2	SHALLOW GUARD (Ohm-m)	2000
0.2	DEEP INDUCTION (Ohm-m)	2000
0.2	MEDIUM INDUCTION (Ohm-m)	2000



3200

3250





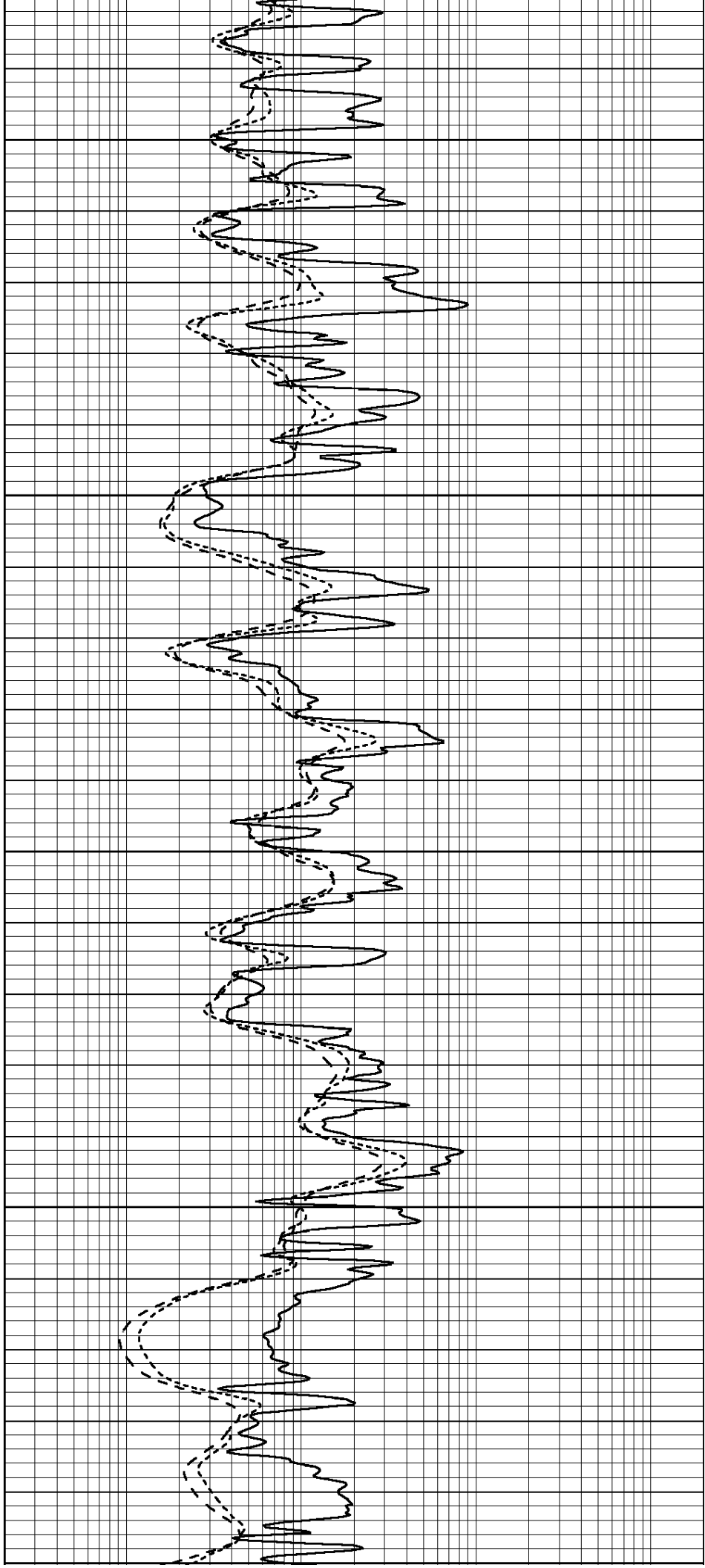
3300

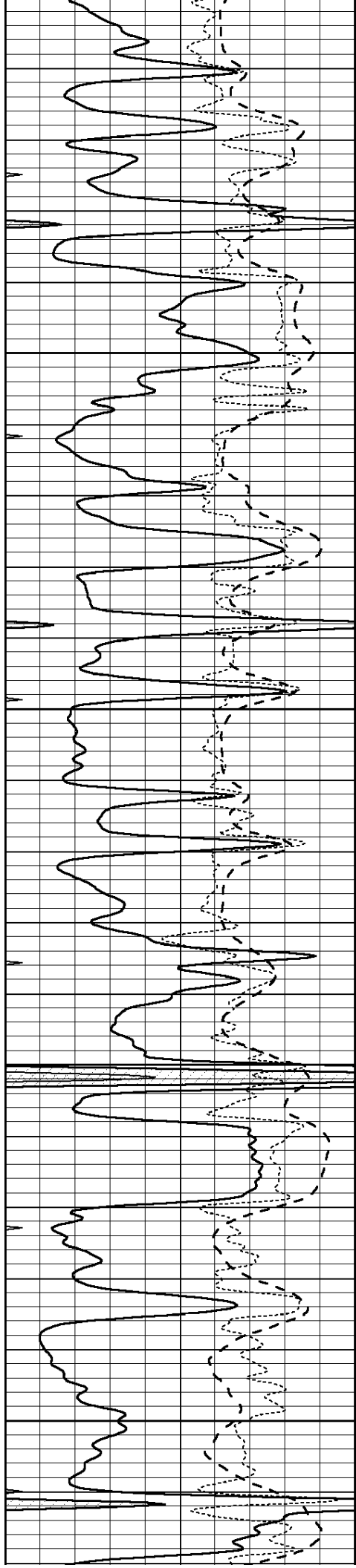
3350

3400

3450

3500





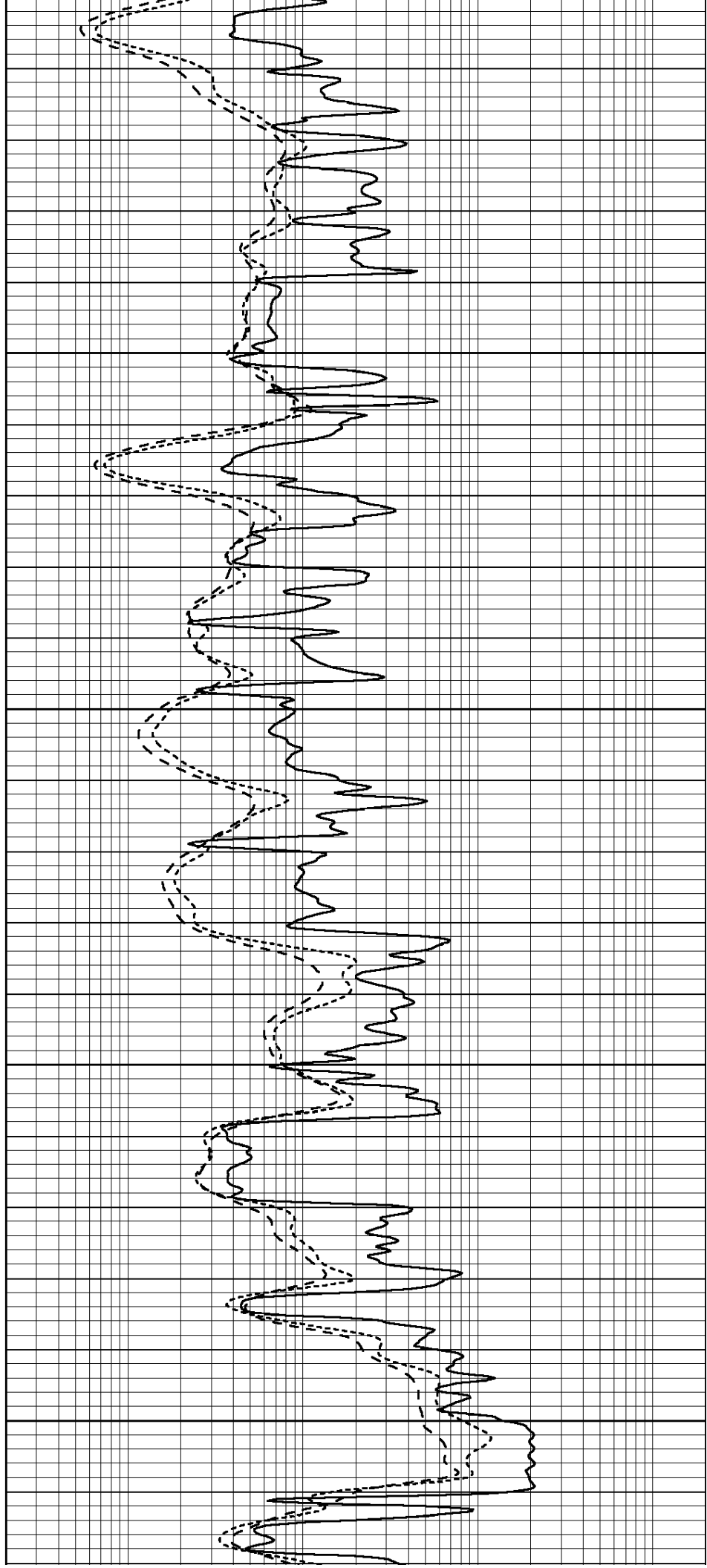
3500

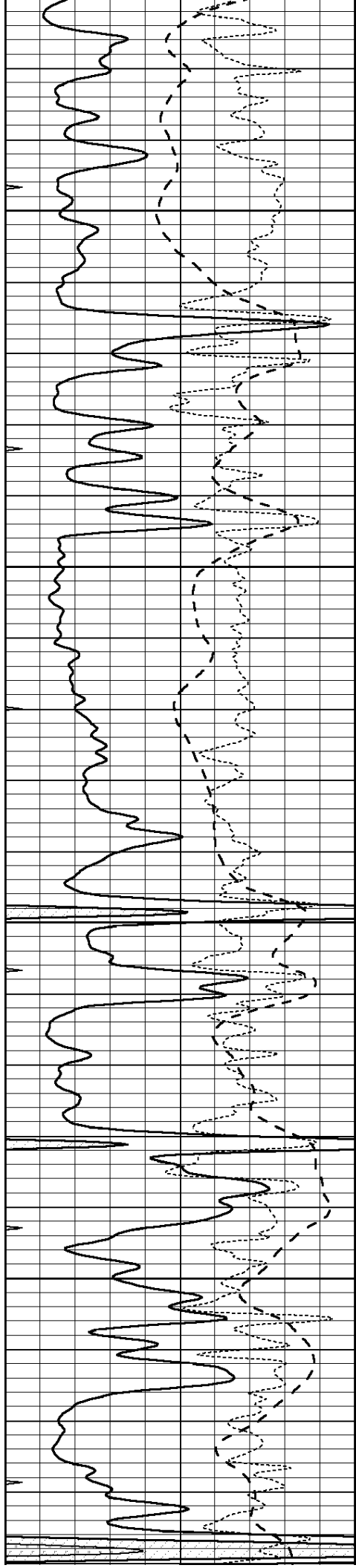
3550

3600

3650

3700



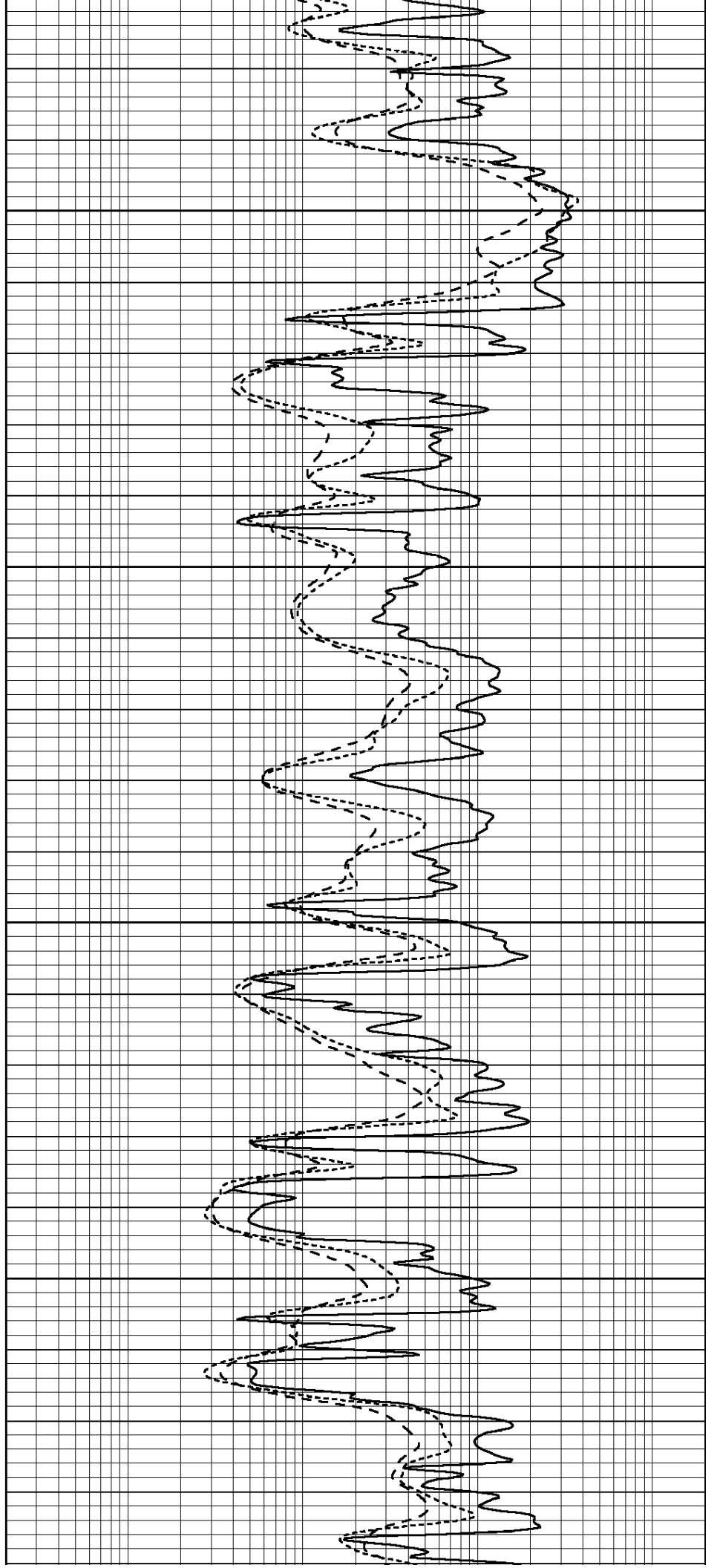


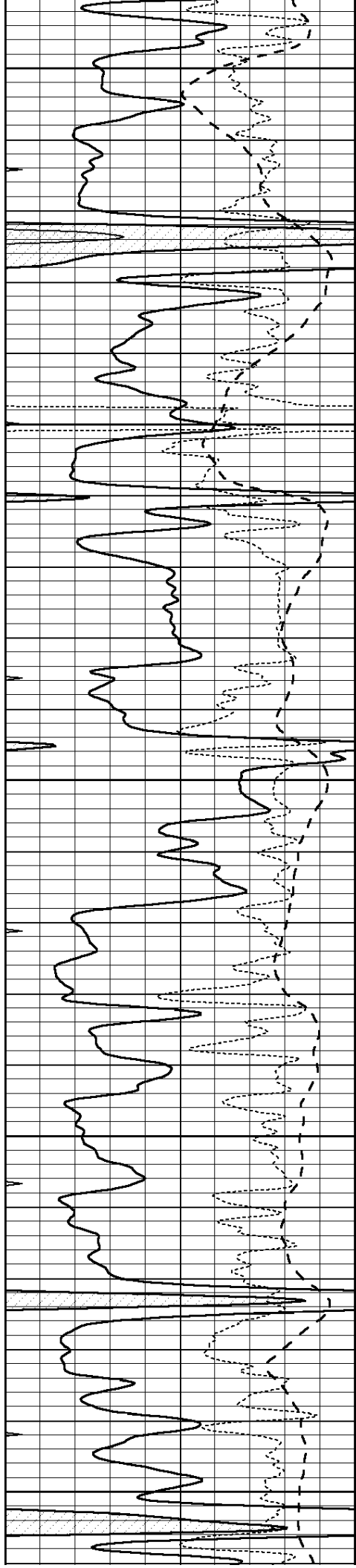
3750

3800

3850

3900





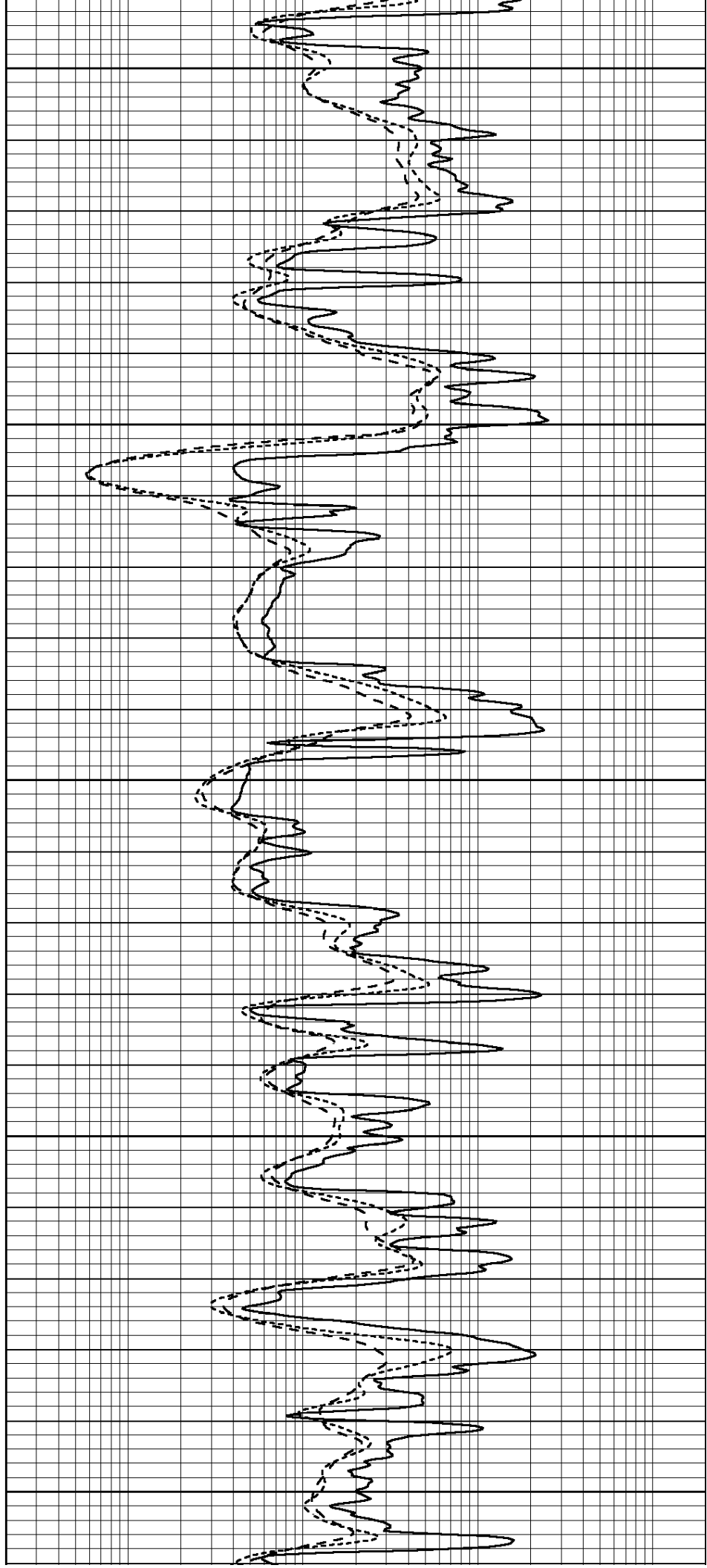
3950

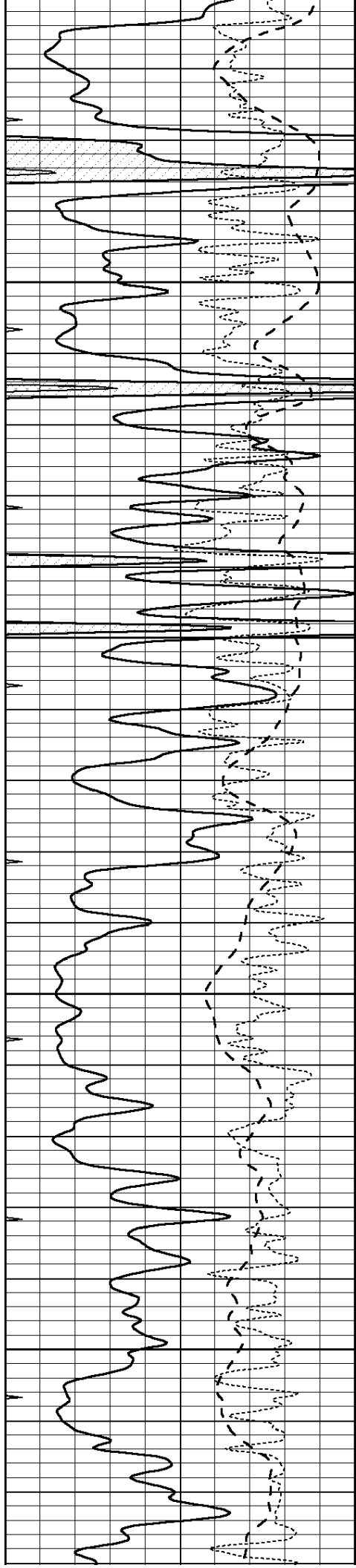
4000

4050

4100

4150



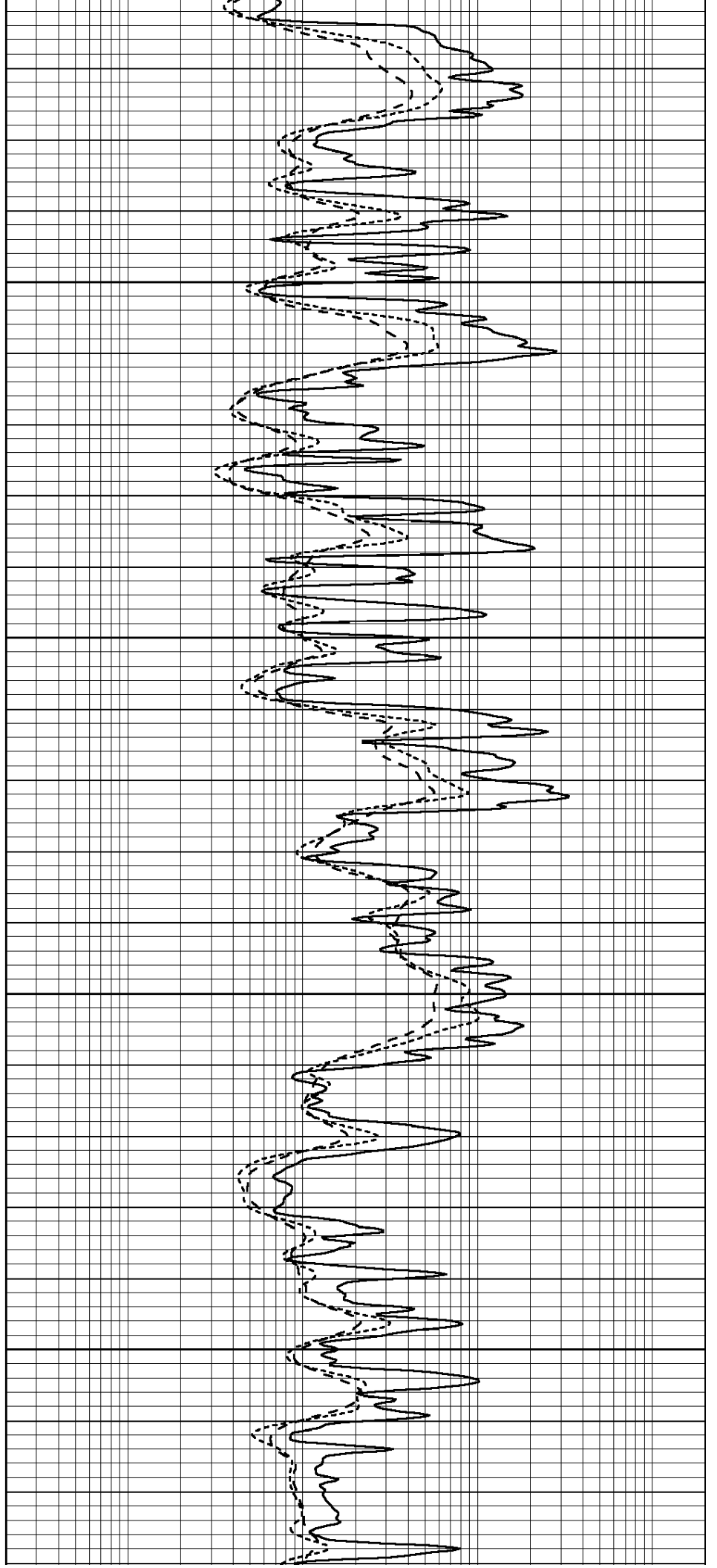


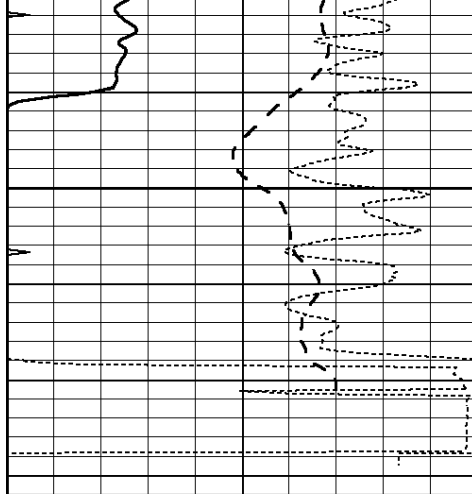
4200

4250

4300

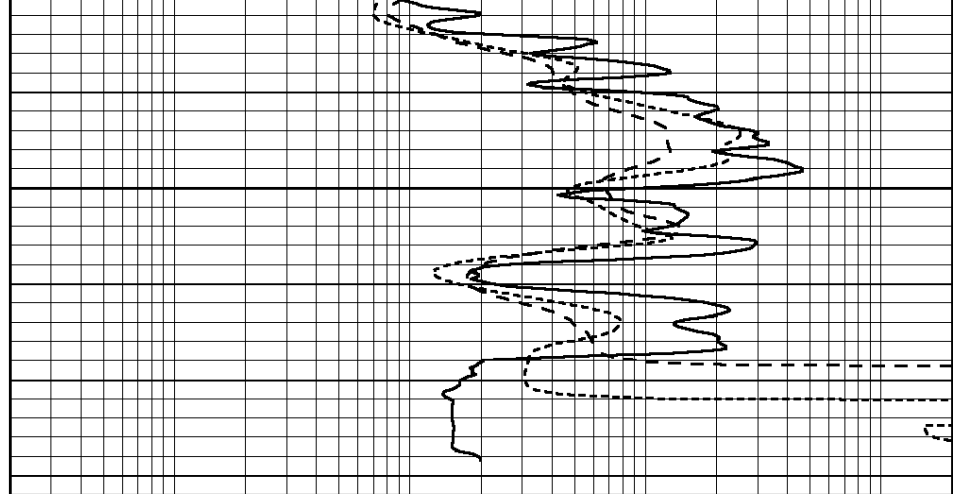
4350





4400

0	GAMMA RAY (GAPI)	150
-100	SP (mV)	100
-250	Rxo/Rt	50
0	MINMK	20



0.2	SHALLOW GUARD (Ohm-m)	2000
0.2	DEEP INDUCTION (Ohm-m)	2000
0.2	MEDIUM INDUCTION (Ohm-m)	2000



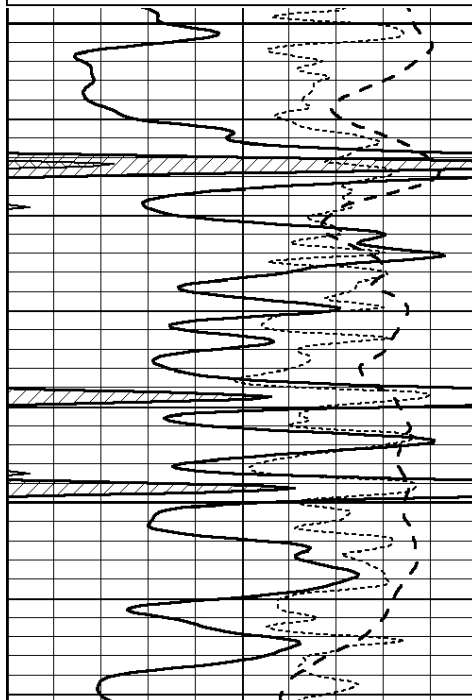
**Casedhole
Solutions**

REPEAT SECTION

Database File: 26647ddn.db
 Dataset Pathname: pass2.6
 Presentation Format: _dil
 Dataset Creation: Sun Nov 08 15:23:27 2015 by Calc SOC 120430
 Charted by: Depth in Feet scaled 1:240

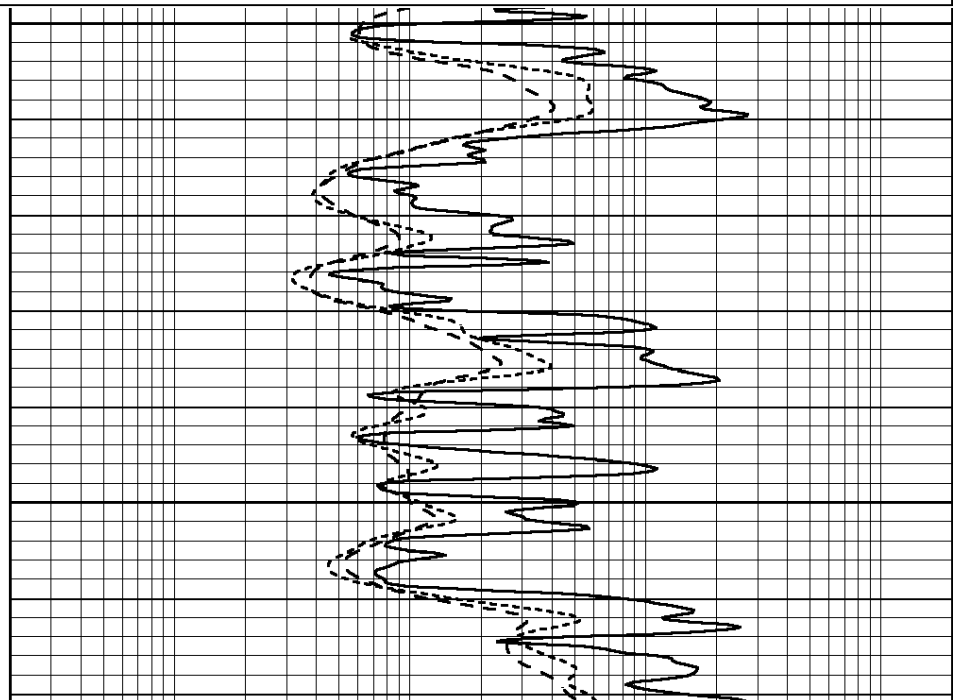
0	GAMMA RAY (GAPI)	150
-100	SP (mV)	100
-250	Rxo/Rt	50
0	MINMK	20

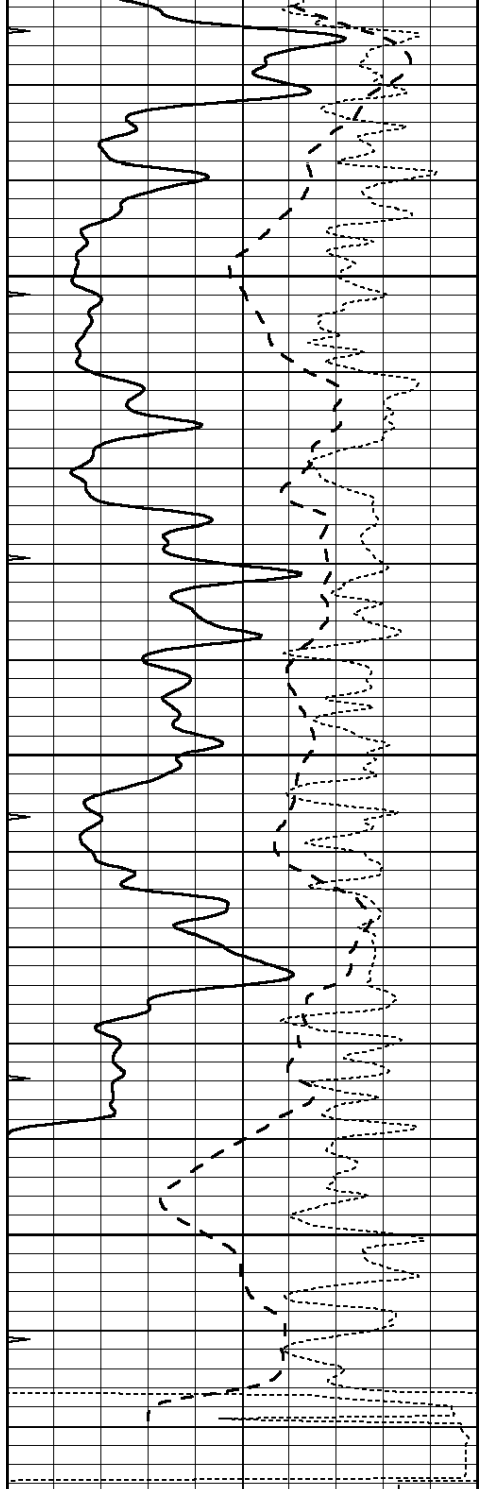
0.2	SHALLOW GUARD (Ohm-m)	2000
0.2	DEEP INDUCTION (Ohm-m)	2000
0.2	MEDIUM INDUCTION (Ohm-m)	2000



4200

4250



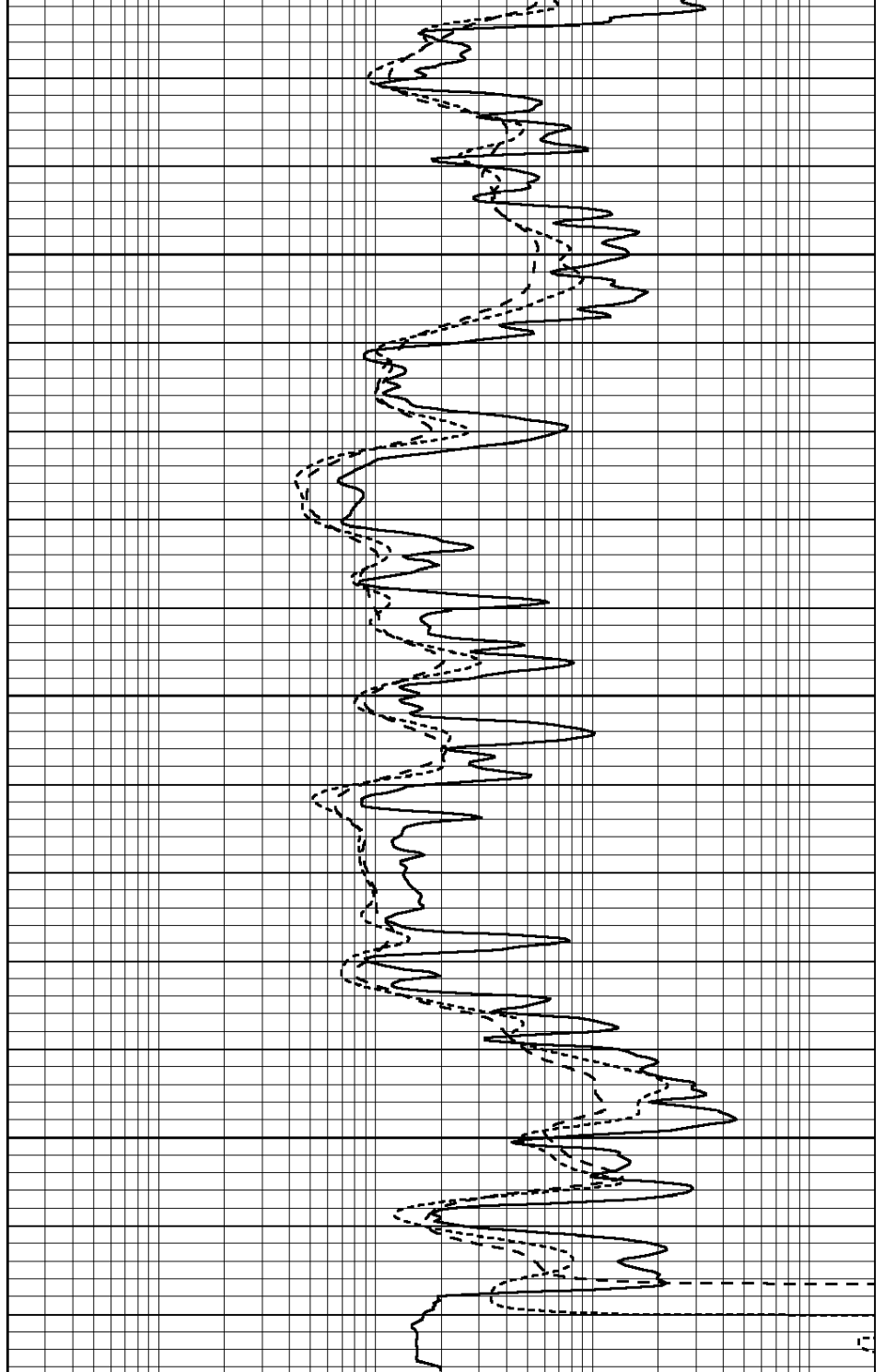


4300

4350

4400

0	GAMMA RAY (GAPI)	150
-100	SP (mV)	100
-250	Rxo/Rt	50
0	MINMK	20



0.2	SHALLOW GUARD (Ohm-m)	2000
0.2	DEEP INDUCTION (Ohm-m)	2000
0.2	MEDIUM INDUCTION (Ohm-m)	2000

Calibration Report

Database File: 26647ddn.db
 Dataset Pathname: pass3.6
 Dataset Creation: Sun Nov 08 15:44:44 2015

Dual Induction Calibration Report

Serial-Model: PROBE9-DILG
 Surface Cal Performed: Thu Oct 01 20:21:25 2015
 Downhole Cal Performed: Mon Jul 28 12:02:56 2008

Surface Calibration								
Loop:	Readings			References			Results	
	Air	Loop		Air	Loop		m	b
Deep	-0.014	0.629	V	0.000	400.000	mmho/m	670.000	-14.000
Medium	0.039	0.728	V	0.000	464.000	mmho/m	685.000	-25.000
Internal:	Zero	Cal		Zero	Cal		m	b
Deep	0.011	0.610	V	0.000	400.000	mmho/m	667.135	-7.256
Medium	0.005	0.712	V	0.000	464.000	mmho/m	655.677	-3.102

Downhole Calibration								
	Readings			References			Results	
	Zero	Cal		Zero	Cal		m'	b'
Deep	0.000	0.000	mmho/m	14.508	388.384	mmho/m	1.000	0.000
Medium	0.000	0.000	mmho/m	166.367	504.400	mmho/m	1.000	0.000
LL3		7.500	V		1400.000	Ohm-m		
		0.000	V		20.000	Ohm-m		
		-7.200	V		4000.000	mmho-m		

After Survey Verification								
	Readings			Targets			Results	
	Zero	Cal		Zero	Cal		m'	b'
Deep	0.000	0.000	mmho/m	0.000	0.000	mmho/m	0.000	0.000
Medium	0.000	0.000	mmho/m	0.000	0.000	mmho/m	0.000	0.000
LL3		1.000	Ohm-m		1.000	Ohm-m		
		0.000	Ohm-m		0.000	Ohm-m		
		1.000	mmho-m		1.000	mmho-m		

Litho Density Calibration Report
Serial: 003N Model: PRB

Master Calibration					Performed Tue Sep 08 14:14:44 2009			
	Background	Magnesium	Aluminum	Sandstone				
Window 1	2042.6	12312.8	4225.8	13758.4				cps
Window 2	1855.8	10134.7	3624.2	11113.1				cps
Window 3	1639.4	6760.2	2716.3	7260.3				cps
Window 4	466.4	469.2	466.1	476.5				cps
Long Space	0.0	8278.9	1768.4	9257.4				cps
Short Space	2.2	2377.3	1544.1	2574.2				cps
Rho		1.7100	2.5900	1.3800				g/cc
Pe		0.0000	2.5700	1.5500				
Rib Angle	: 44.4	Rib Slope	: 0.979	Density/Spine Ratio				: 0.549
Spine Angle	: 74.4	Spine Slope	: 3.577	Spine Intercept				: -18.8

Before Survey Verification					Performed Wed Dec 31 18:00:00 1969			
Window 1	0.0	0.0	0.0	0.0				cps
Window 2	0.0	0.0	0.0	0.0				cps
Window 3	0.0	0.0	0.0	0.0				cps
Window 4	0.0	0.0	0.0	0.0				cps
Long Space	0.0	0.0	0.0	0.0				cps
Short Space	0.0	0.0	0.0	0.0				cps
Measured Rho		0.0000	0.0000	0.0000				g/cc
Measured Correction		0.0000	0.0000	0.0000				g/cc
Measured Pe			0.0000	0.0000				

After Survey Verification

Performed Wed Dec 31 18:00:00 1969

Window 1	0.0	0.0	0.0	0.0	cps
Window 2	0.0	0.0	0.0	0.0	cps
Window 3	0.0	0.0	0.0	0.0	cps
Window 4	0.0	0.0	0.0	0.0	cps
Long Space	0.0	0.0	0.0	0.0	cps
Short Space	0.0	0.0	0.0	0.0	cps
Measured Rho		0.0000	0.0000	0.0000	g/cc
Measured Correction		0.0000	0.0000	0.0000	g/cc
Measured Pe			0.0000	0.0000	

Compensated Neutron Calibration Report

Serial Number: 070808
Tool Model: Probe

PRE-SURVEY VERIFICATION

Detector	Readings	Measured	Target
Short Space	cps		
Long Space	cps	pu	pu

POST-SURVEY VERIFICATION

Detector	Readings	Measured	Target
Short Space	cps		
Long Space	cps	pu	pu

Gamma Ray Calibration Report

Serial Number: 070558
Tool Model: OPEN_GR
Performed: Sun Nov 08 15:24:43 2015

Calibrator Value: 1.0 GAPI

Background Reading: 0.0 cps
Calibrator Reading: 1.0 cps

Sensitivity: 0.2800 GAPI/cps