



DUAL COMP POROSITY LOG

Company AMERICAN WARRIOR, INC.
 Well MELVIN NO. 2-16 UNIT
 Field MANTZ SOUTHEAST
 County NESS
 State KANSAS

Company AMERICAN WARRIOR, INC.
 Well MELVIN NO. 2-16 UNIT
 Field MANTZ SOUTHEAST
 County NESS State KANSAS

Location: API #: 15-135-25885-00-00
 900' FSL & 2675' FWL;
 SEC 16 TWP 18S RGE 21W
 Permanent Datum GROUND LEVEL Elevation 2167'
 Log Measured From KELLY BUSHING
 Drilling Measured From KELLY BUSHING
 Other Services DIL
 Elevation
 K.B. 2175'
 D.F. N/A
 G.L. 2167'

Date	8/30/15
Run Number	ONE
Type Log	CNL/CDL
Depth Driller	4265'
Depth Logger	4261'
Bottom Logged Interval	4240'
Top Logged Interval	3600'
Type Fluid In Hole	CHEMICAL
Salinity, PPM CL	3,400
Density	9.4
Level	FULL
Max. Rec. Temp. F	119
Operating Rig Time	2 HOURS
Equipment -- Location	91 Hays
Recorded By	J. HENRICKSON
Witnessed By	JASON ALM

Borehole Record		Casing Record					
Run No.	Bit	From	To	Size	Wgt.	From	To
ONE	12.25	00	220	8.625	23#	00	220
TWO	7.875	220	TD				

<<< Fold Here >>>

All interpretations are opinions based on inferences from electrical or other measurements and Pioneer Wireline Services, LLC cannot and does not guarantee the accuracy or correctness of any interpretation, and Pioneer Wireline Services, LLC will not be liable or responsible for any loss, costs, damages, or expenses incurred or sustained by anyone resulting from any interpretation made by any of our officers, agents or employees.

Comments

N/A DENOTES NOT AVAILABLE OR NON-APPLICABLE.

BAZINE KANSAS
2 EAST, 2 NORTH, 1/2 EAST. NORTH INTO

Log Measured From: KELLY BUSHING 8 Ft. Above Permanent Datum

THANK YOU FOR USING PIONEER ENERGY SERVICES
www.pioneerenergy.com 785-625-3858

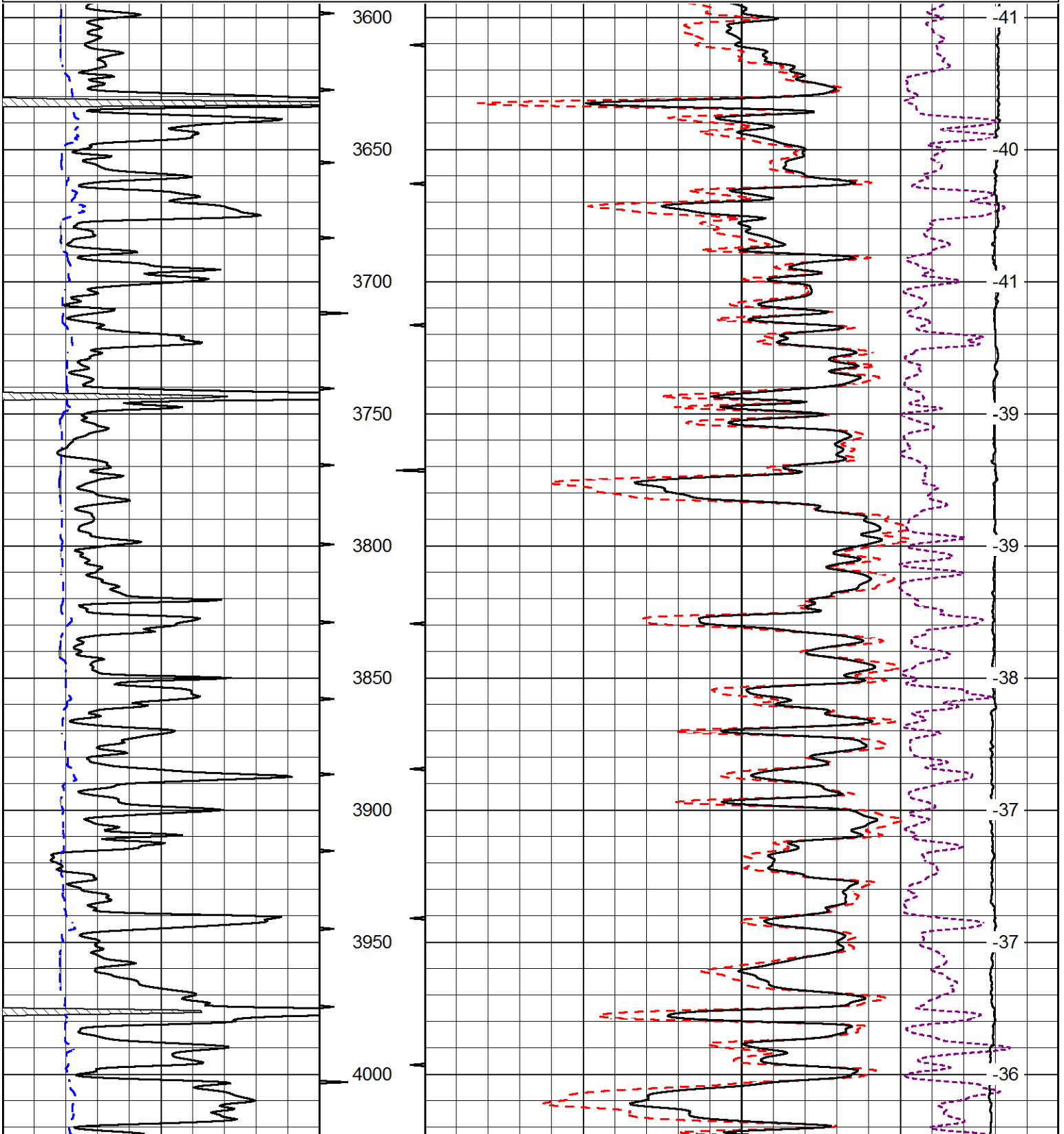
Your Pioneer Energy Services Crew Engineer: J. HENRICKSON Operator: Operator: Operator:	This Log Record Was Witnessed By Primary Witness: JASON ALM Secondary Witness: Secondary Witness: Secondary Witness:
--	---

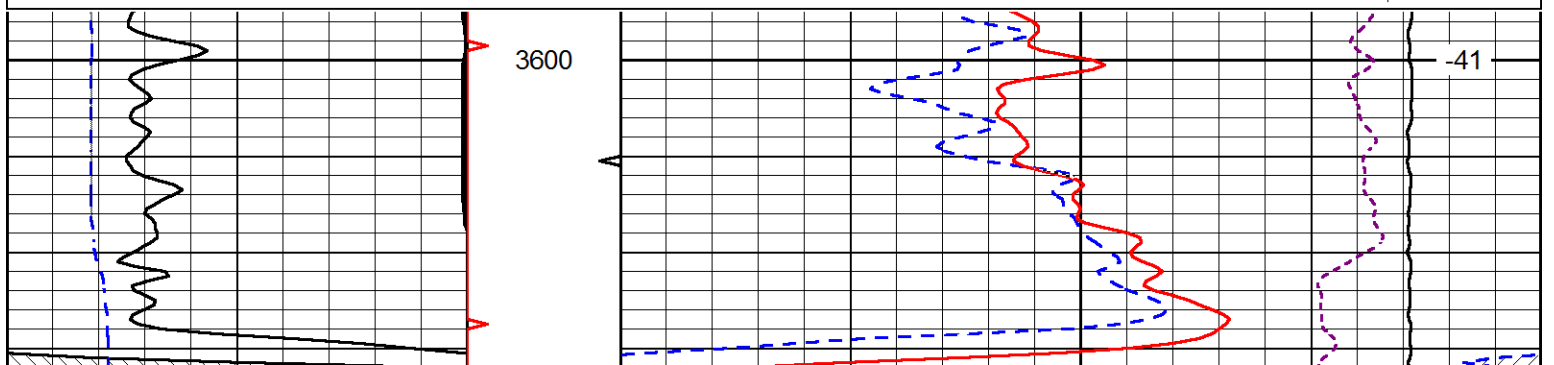
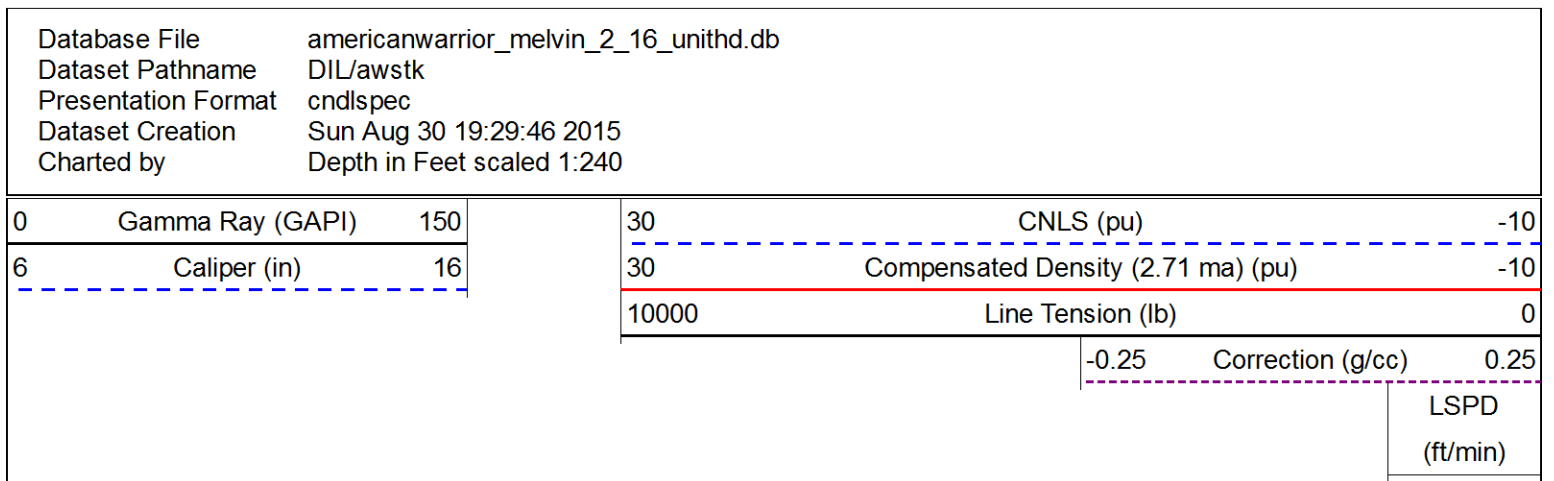
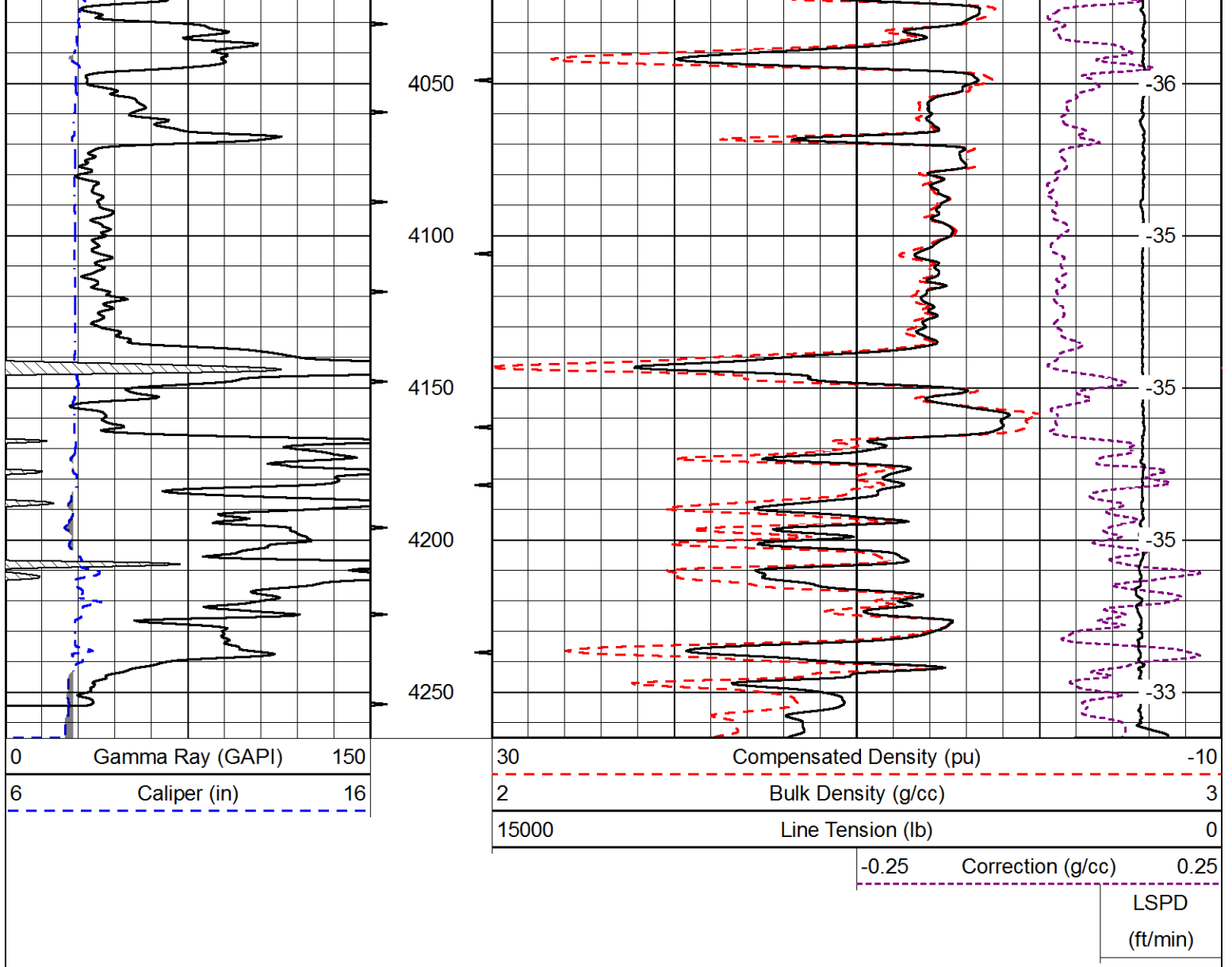
Database File americanwarrior_melvin_2_16_unithd.db
 Dataset Pathname DIL/awstk
 Presentation Format cdl
 Dataset Creation Sun Aug 30 19:29:46 2015
 Charted by Depth in Feet scaled 1:600

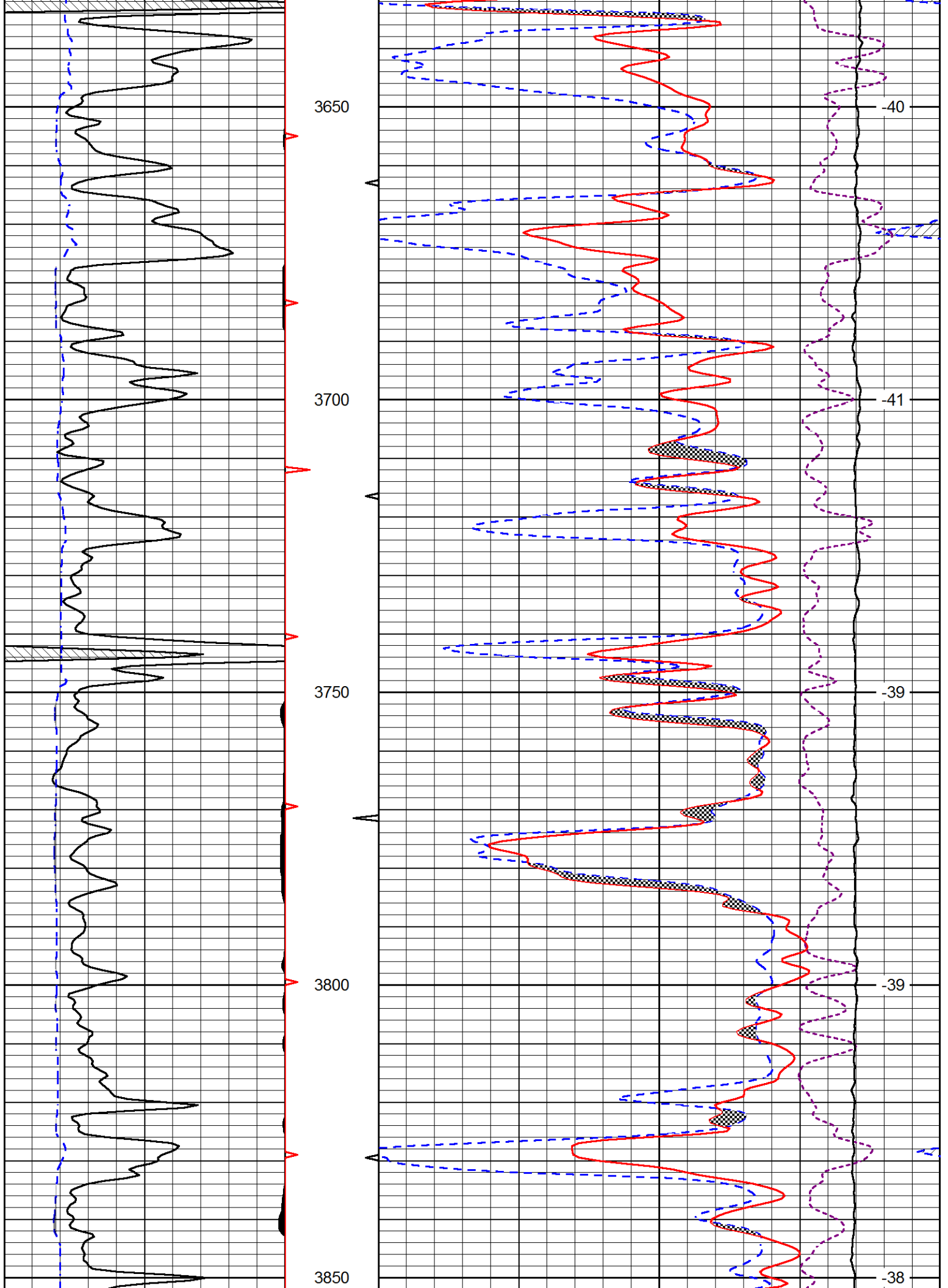
0	Gamma Ray (GAPI)	150
6	Caliper (in)	16

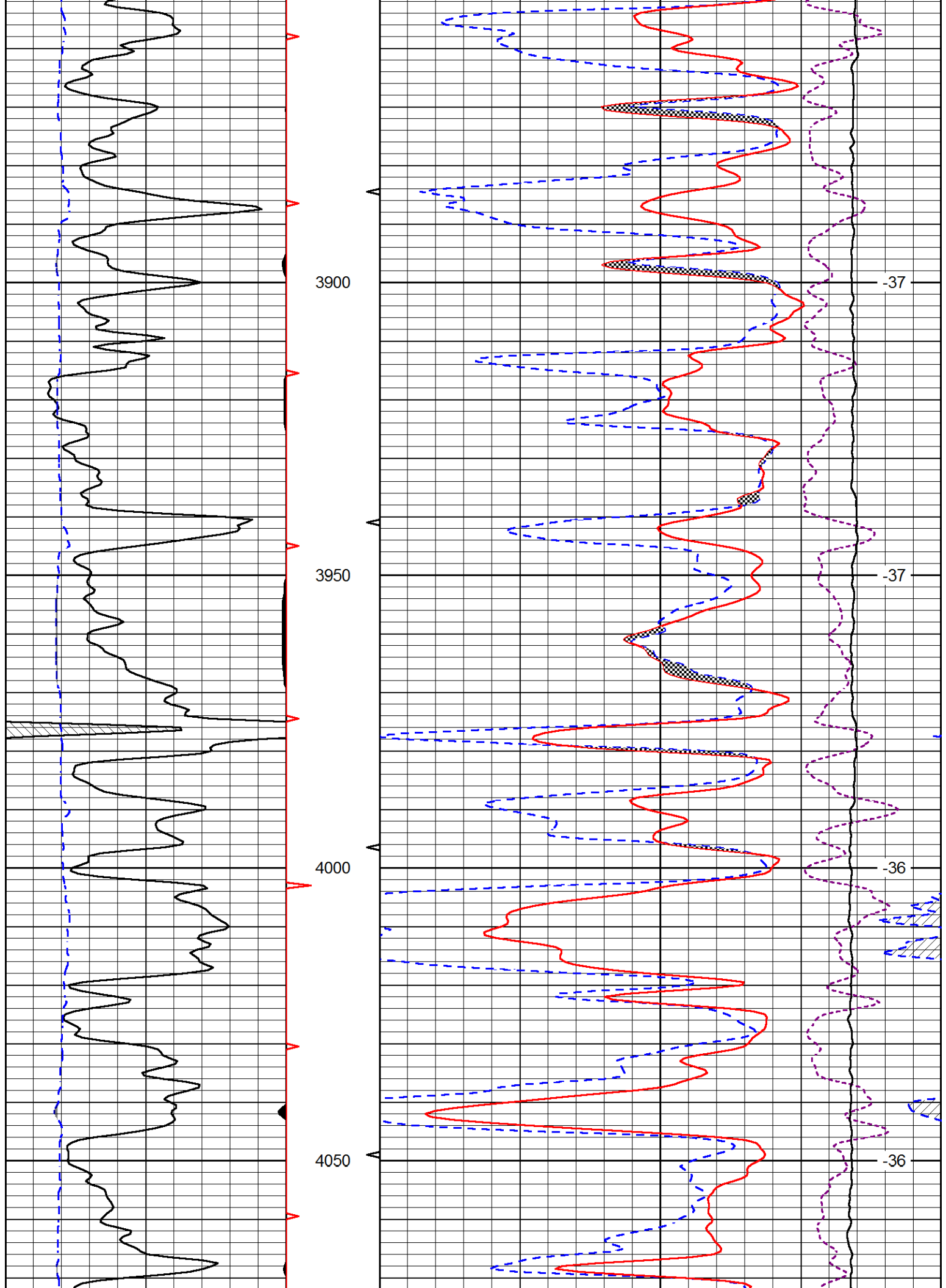
30	Compensated Density (pu)	-10
2	Bulk Density (g/cc)	3
15000	Line Tension (lb)	0
-0.25	Correction (g/cc)	0.25

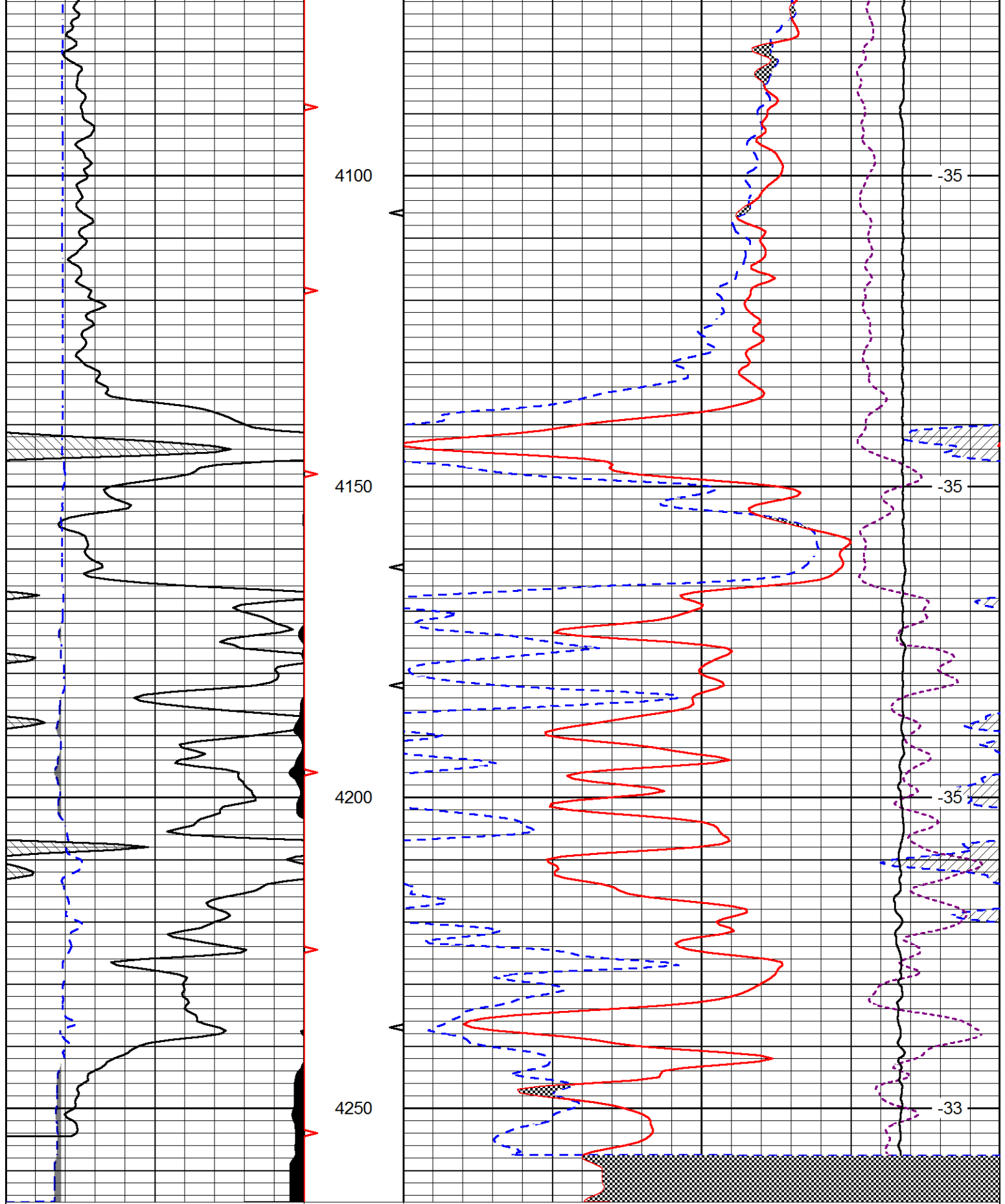
LSPD
(ft/min)











0 Gamma Ray (GAPI) 150
 6 Caliper (in) 16

30 CNLS (pu) -10
 30 Compensated Density (2.71 ma) (pu) -10
 10000 Line Tension (lb) 0
 -0.25 Correction (g/cc) 0.25

LSPD
 (ft/min)

