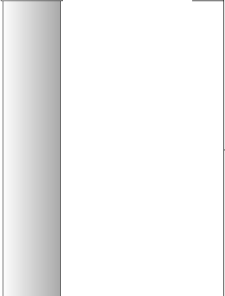


Log Variables

DatabaseC:\ProgramData\Warrior\Data\hessoil_marlene_1.db
 Dataset field/well/grn/pass4/_vars_

Top - Bottom

NPORSHIFT 0	NPORSEL Limestone	SRFTEMP degF 98	CASETHCK in 0.29	CASEOD in 4.5	PERFS 0	TDEPTH ft 1316
BOTTEMP degF 88		BOREID in 7.875				

Sensor	Offset (ft)	Schematic	Description	Length (ft)	O.D. (in)	Weight (lb)
GR	8.50		GR-SIEGRN (0004SIE-N)	5.00	3.50	75.00
CCL	3.00		CCL-SIEGG (GGCCL)	1.50	3.25	20.00
			NEU SIE (0001)	3.00	3.50	30.00

NEU 1.00

NEU-SIE (0001)

3.00

3.50

30.00

Dataset: hessoil_marlene_1.db: field/well/grn/pass3
Total length: 9.50 ft
Total weight: 125.00 lb
O.D.: 3.50 in



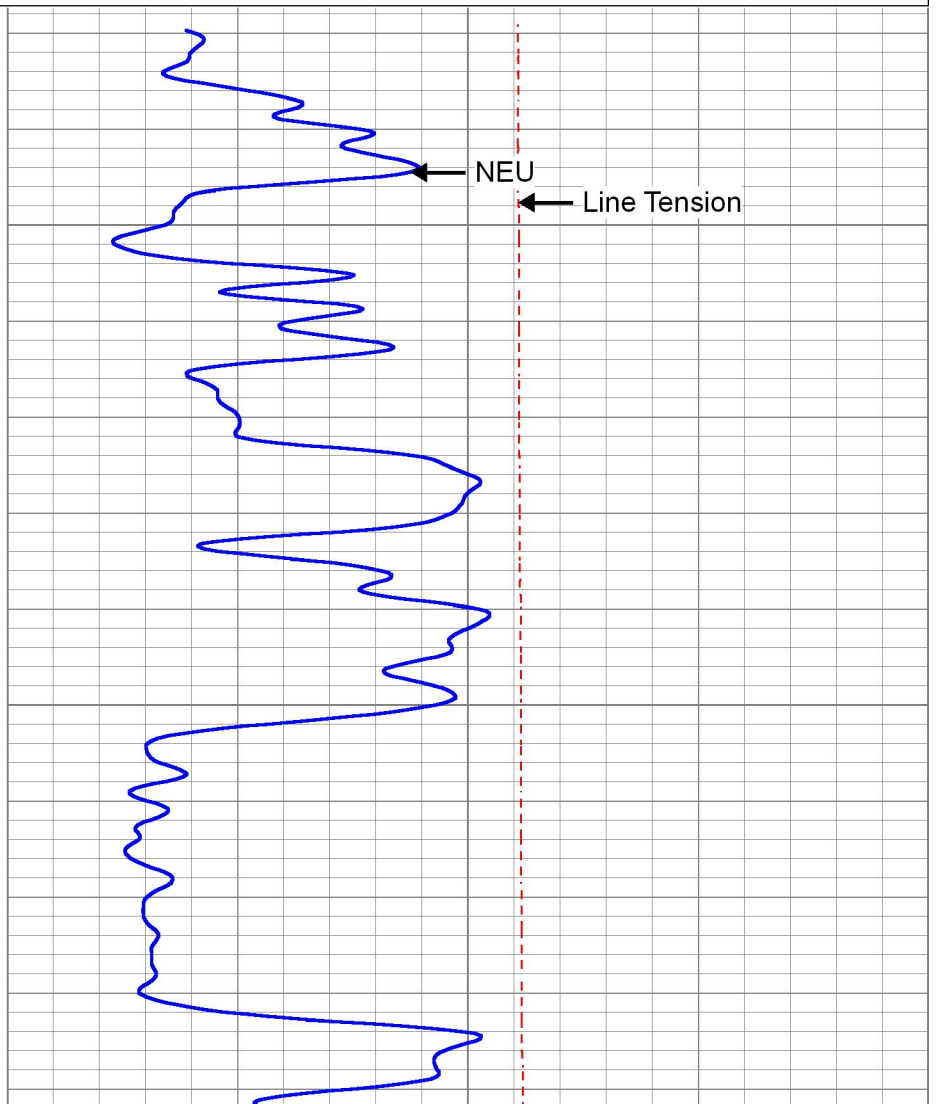
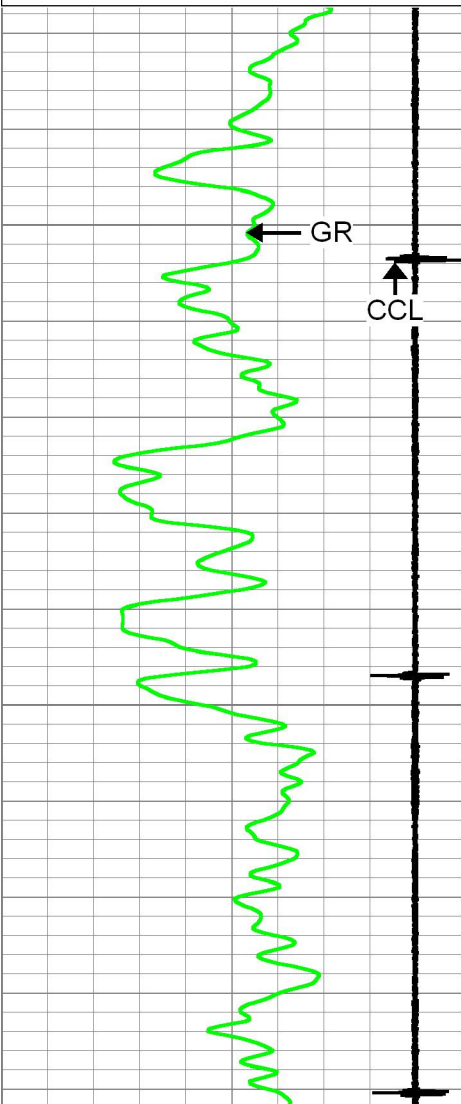
MAIN PASS

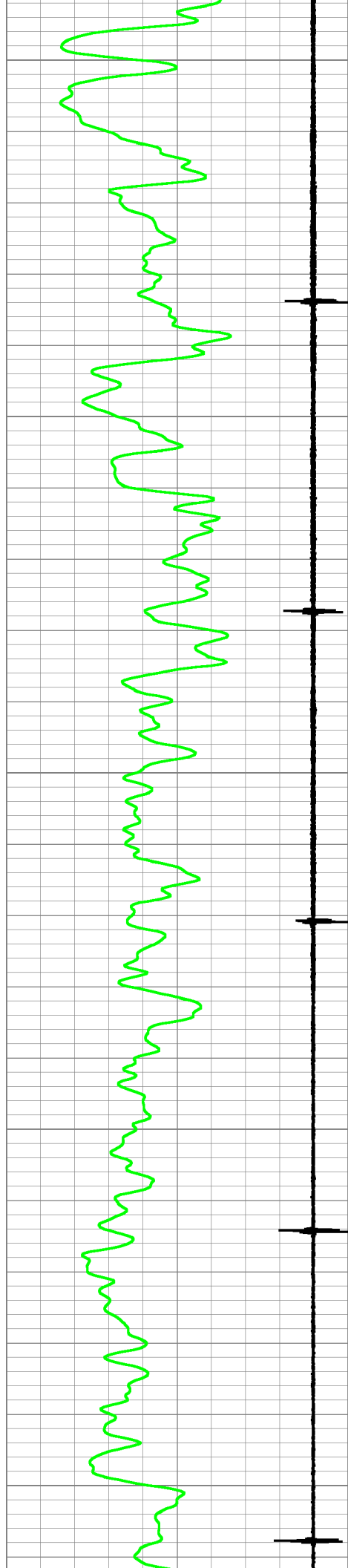
0 PSI AT SURFACE

Database File hessoil_marlene_1.db
Dataset Pathname grn/pass3
Presentation Format pnr_gr-n-ccl
Dataset Creation Tue Aug 11 14:21:25 2015
Charted by Depth in Feet scaled 1:240

0	GR (GAPI)	150
-9	CCL	1

325	NEU (NAPI)	1000
0	Line Tension (lb)	2000





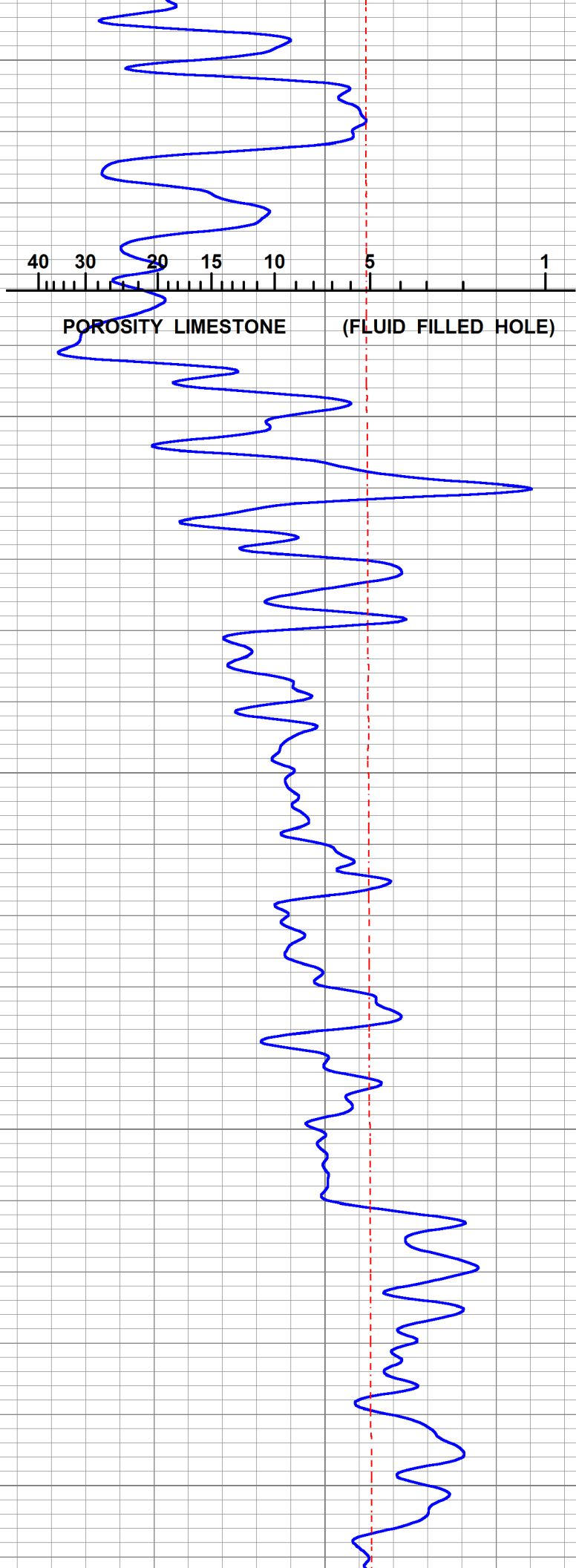
600

650

700

750

800



40

30

20

15

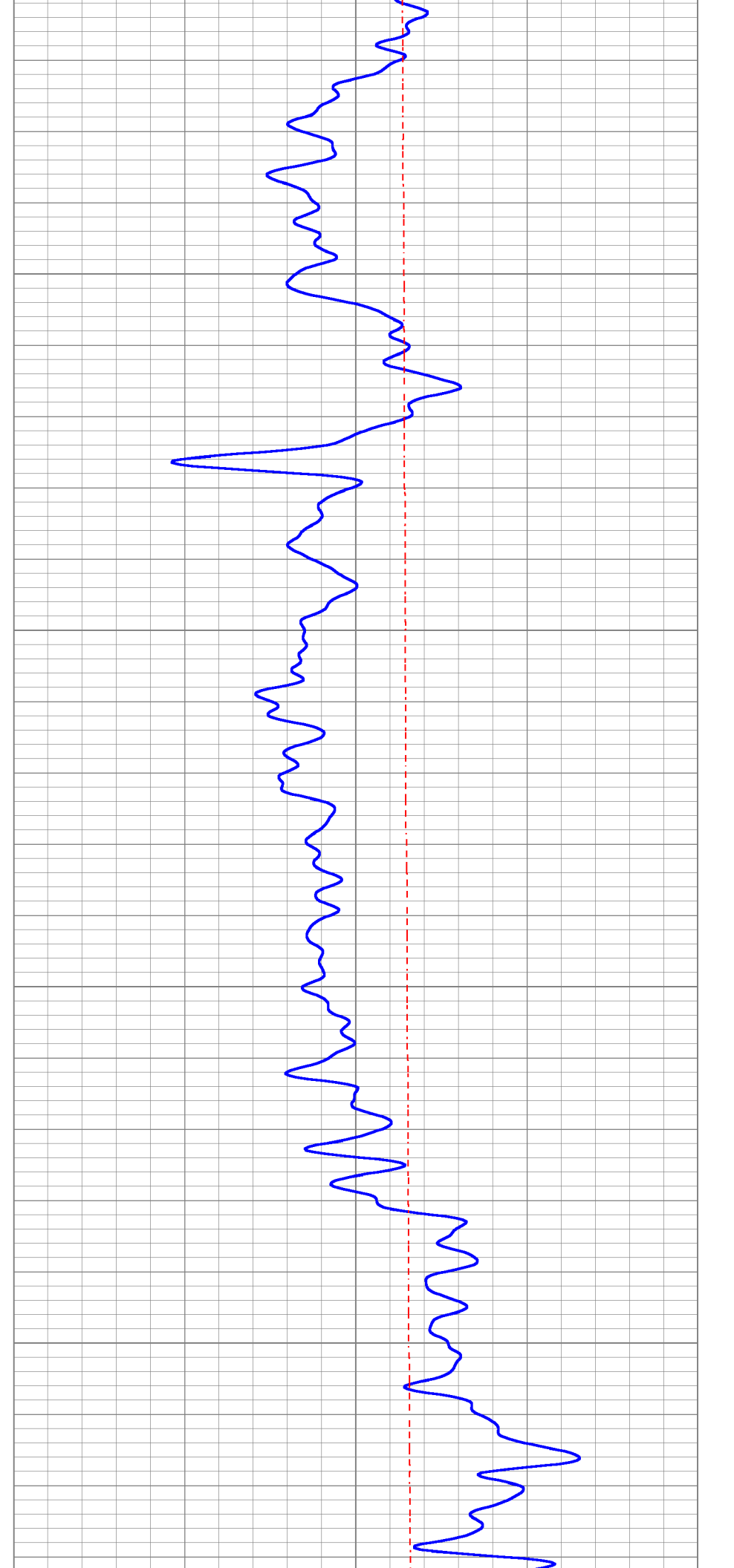
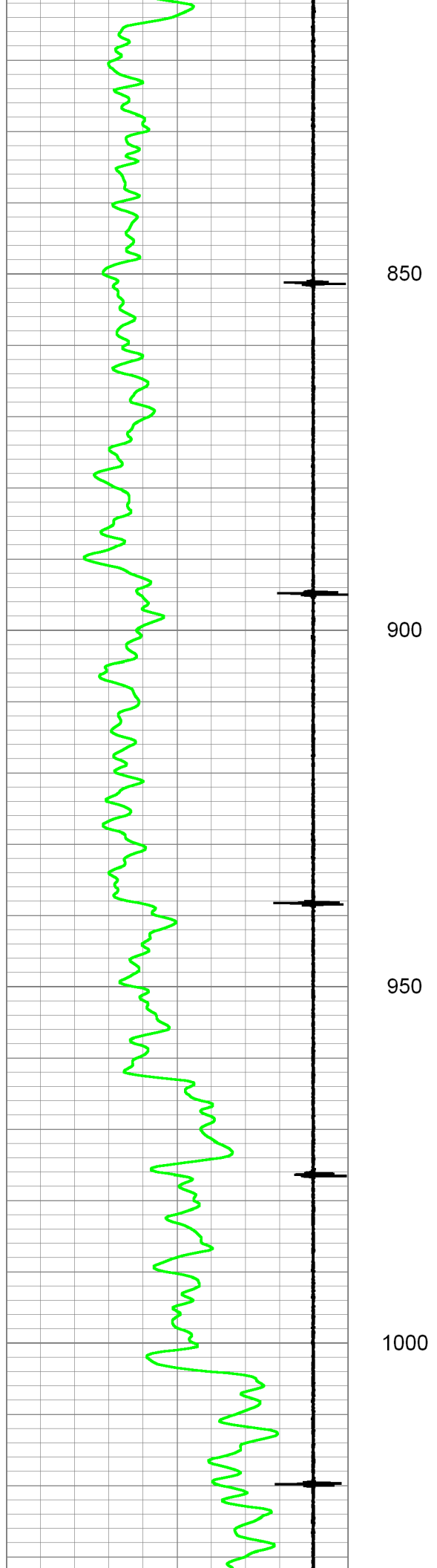
10

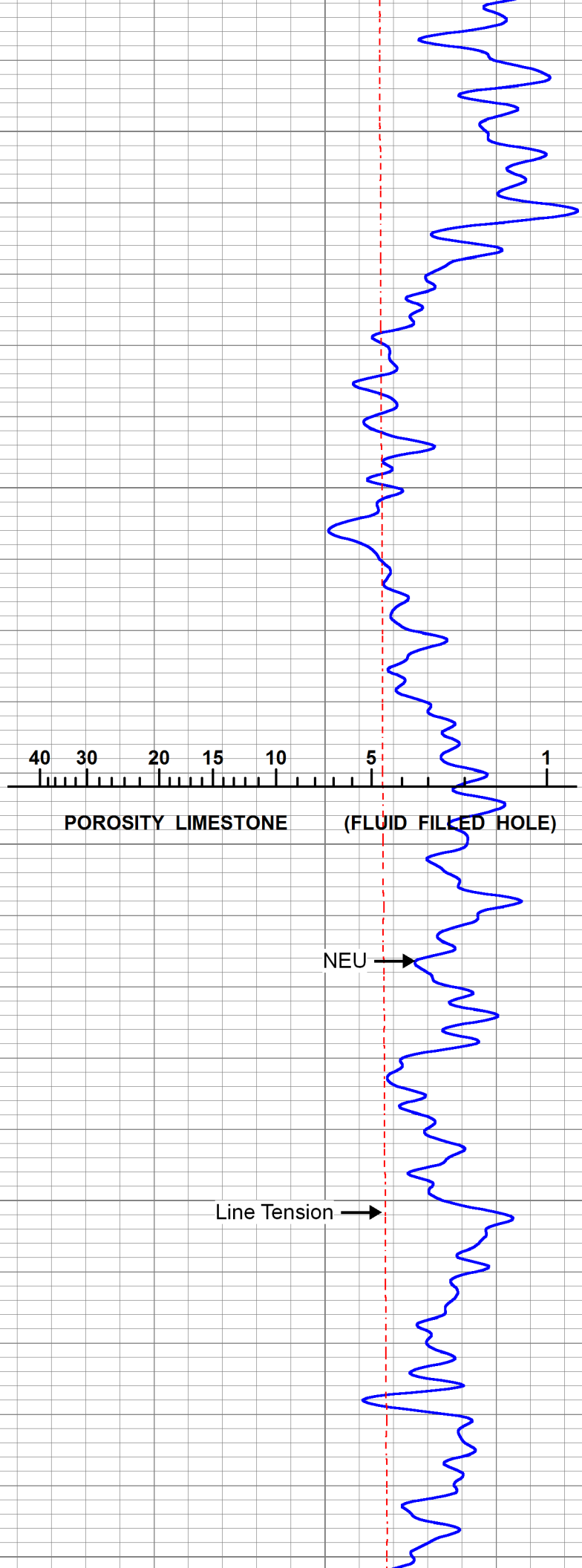
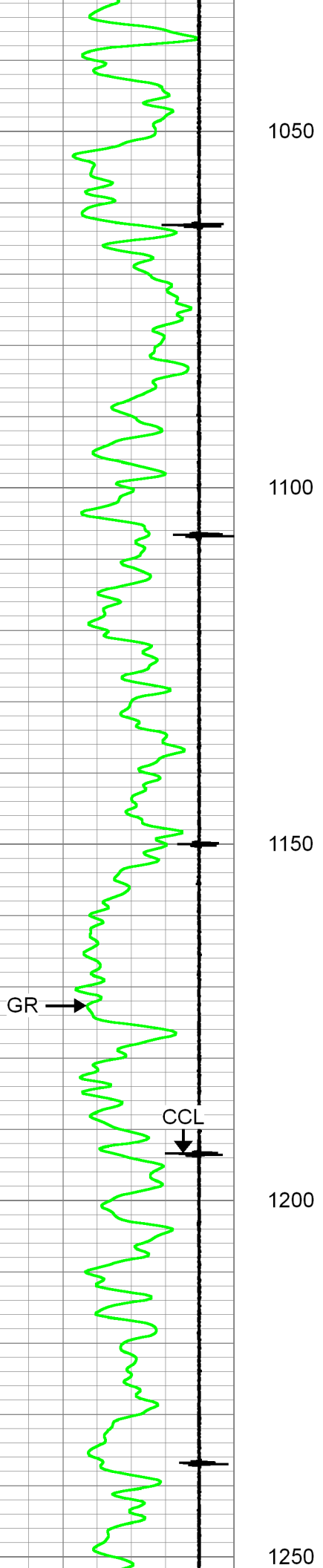
5

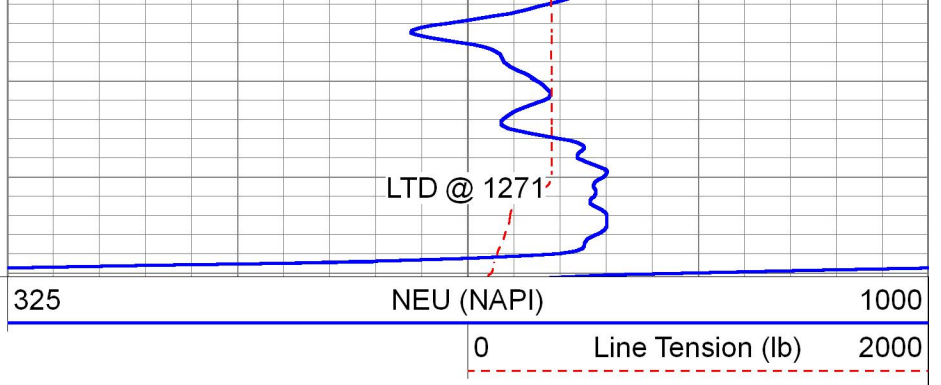
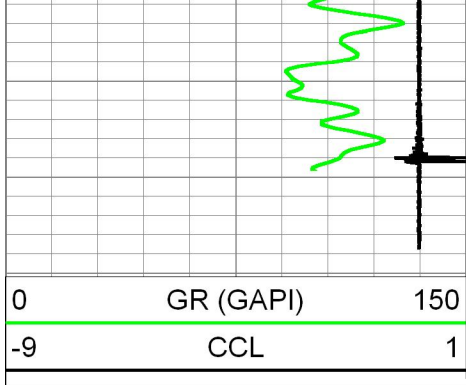
1

POROSITY LIMESTONE

(FLUID FILLED HOLE)



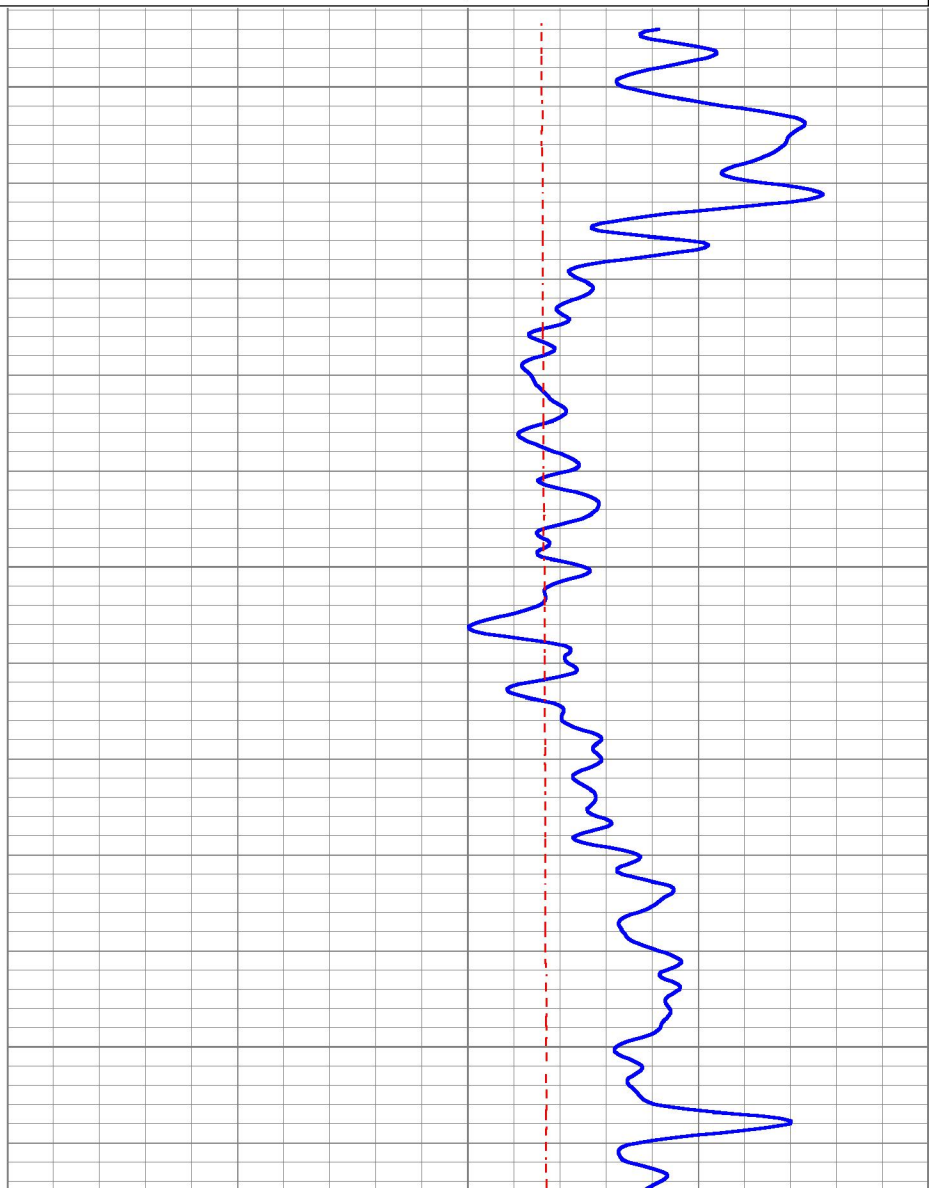
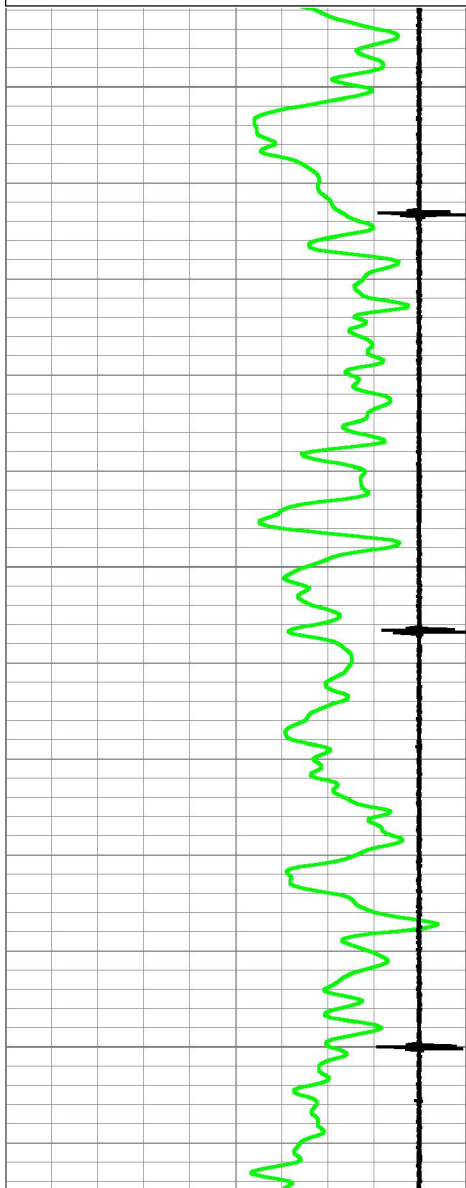
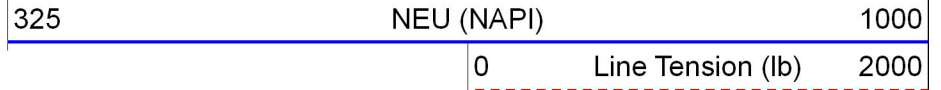


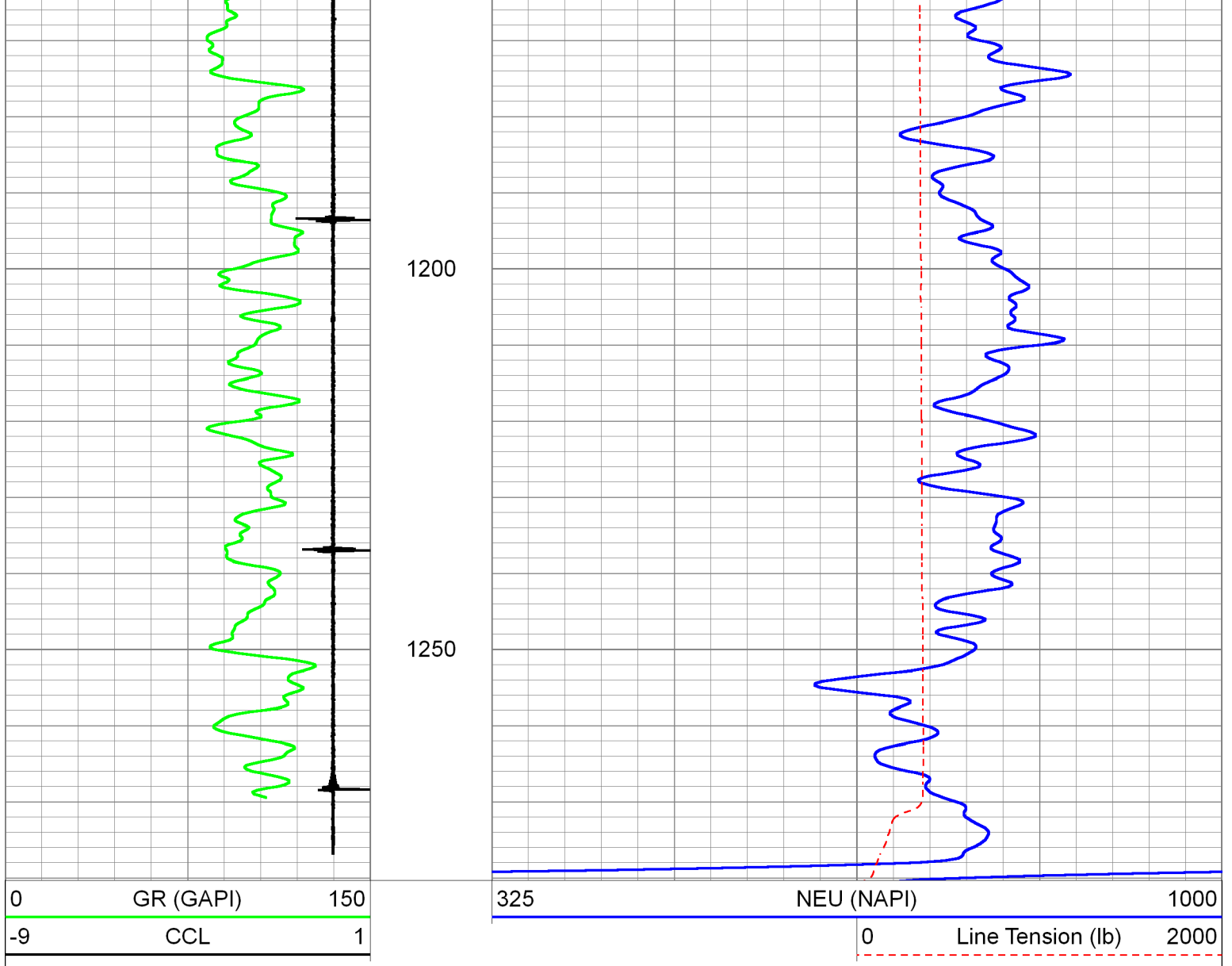


REPEAT SECTION

0 PSI AT SURFACE

Database File hessoil_marlene_1.db
 Dataset Pathname grn/pass2
 Presentation Format pnr_gr-n-ccl
 Dataset Creation Tue Aug 11 14:12:01 2015
 Charted by Depth in Feet scaled 1:240





Calibration Report

Database File hessoil_marlene_1.db
 Dataset Pathname grn/pass3
 Dataset Creation Tue Aug 11 14:21:25 2015

Neutron Calibration Report

Serial Number: 0001
 Tool Model: SIE
 Performed: Tue Aug 11 14:00:26 2015

Calibrator Value: 1 NAPI
 Calibrator Reading: 1 cps
 Sensitivity: 1.2 NAPI/cps

Gamma Ray Calibration Report

Serial Number: 0004SIE-N
 Tool Model: SIEGRN
 Performed: Tue Aug 11 14:00:22 2015

Calibrator Value: 1.0 GAPI
 Background Reading: 0.0 cps

Background Reading:

0.0

cps

Calibrator Reading:

1.0

cps

Sensitivity:

1.1000

GAPI/cps



Pioneer Energy Services

Company HESS OIL COMPANY

Well MARLENE NO. 1

Field SACK

County ELLIS

State KANSAS