



# MICRORESISTIVITY LOG

Company: OUTLAW WELL SERVICE LLC  
 Well: DON #1  
 Field: BRAY  
 County: ROOKS  
 State: KANSAS

Company: OUTLAW WELL SERVICE LLC  
 Well: DON #1  
 Field: BRAY  
 County: ROOKS  
 State: KANSAS

Location: 330' FSL & 1060' FWL  
 SEC 20 TWP 8S RGE 19W  
 Permanent Datum: GROUND LEVEL Elevation 2005  
 Log Measured From: KELLY BUSHING  
 Drilling Measured From: KELLY BUSHING  
 Other Services: CNL/CDL DIL  
 Elevation: K.B. 2013, D.F. 2012, G.L. 2005

Date	7/14/2015
Run Number	ONE
Depth Driller	3553
Depth Logger	3545
Bottom Logged Interval	3544
Top Log Interval	2850
Casing Driller	8.625 @ 220
Casing Logger	2.19
Bit Size	7.875
Type Fluid in Hole	CHEMICAL
Salinity, ppm CL	9000
Density / Viscosity	9.3 50
pH / Fluid Loss	9.5 11.2
Source of Sample	Flowline
Rm @ Meas. Temp	0.63 @ 87
Rmt @ Meas. Temp	0.47 @ 87
Rmc @ Meas. Temp	0.85 @ 87
Source of Rmf / Rmc	Charts
Rm @ BHT	0.49 @ 112
Operating Rig Time	2 HOURS
Max Rec. Temp. F	112
Equipment Number	15
Location	Hays
Recorded By	D.KERR
Witnessed By	MARC DOWNING

<<< Fold Here >>>

All interpretations are opinions based on inferences from electrical or other measurements and Pioneer Wireline Services, LLC cannot and does not guarantee the accuracy or correctness of any interpretation, and Pioneer Wireline Services, LLC will not be liable or responsible for any loss, costs, damages, or expenses incurred or sustained by anyone resulting from any interpretation made by any of our officers, agents or employees.

Comments

N/A DENOTES NOT AVAILABLE OR NON-APPLICABLE.  
 ZURICH KS, 7 NORTH TO Q RD,  
 1 3/4 WEST, NORTH AND EAST INTO

Log Measured From: KELLY BUSHING 8 Ft. Above Permanent Datum

THANK YOU FOR USING PIONEER ENERGY SERVICES  
[www.pioneerenergy.com](http://www.pioneerenergy.com) 785-625-3858

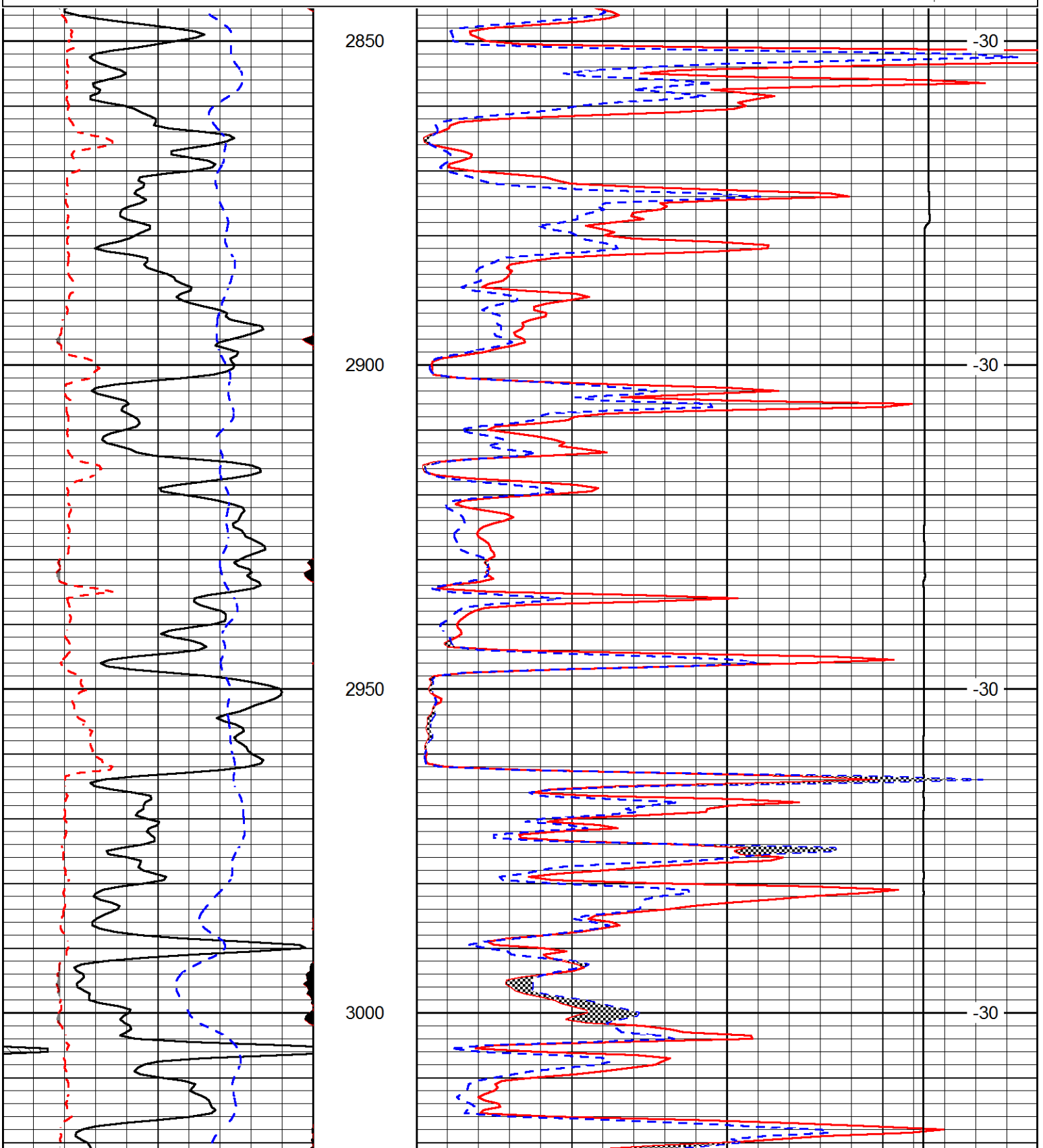
Your Pioneer Energy Services Crew Engineer: D.KERR Operator: Operator: Operator:	This Log Record Was Witnessed By Primary Witness: MARC DOWNING Secondary Witness: Secondary Witness: Secondary Witness:
--	---

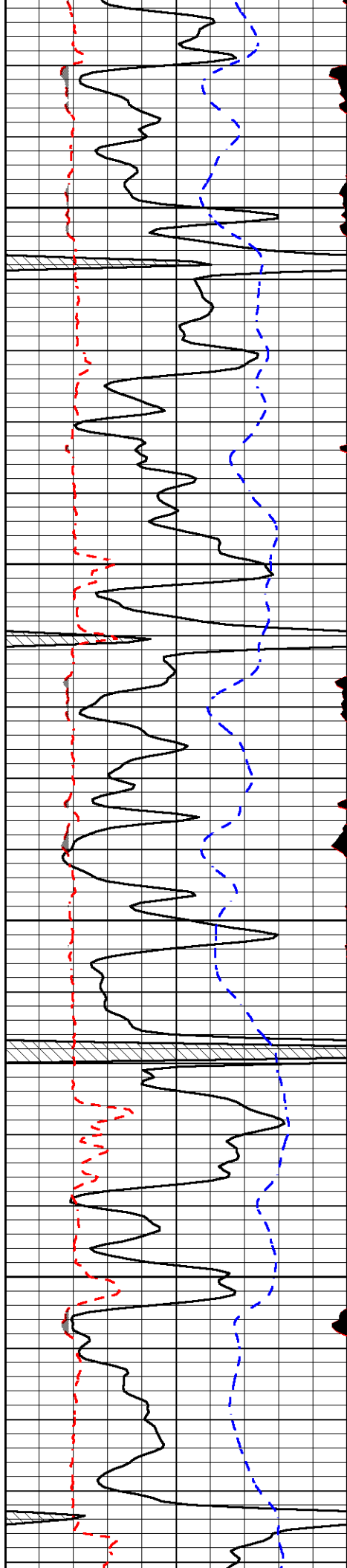
Database File outlaw\_don\_1hd.db  
 Dataset Pathname DIL/outstkml  
 Presentation Format micro  
 Dataset Creation Tue Jul 14 05:17:35 2015  
 Charted by Depth in Feet scaled 1:240

0	Gamma Ray (GAPI)	150
6	MCAL (in)	16
2.875	Mud Cake (in)	7.875
-200	SP (mV)	0

0	Micro Inverse 1 X 1 (Ohm-m)	40
0	Micro Normal 2" (Ohm-m)	40
10000	Line Weight (lb)	0

LSPD  
(ft/min)



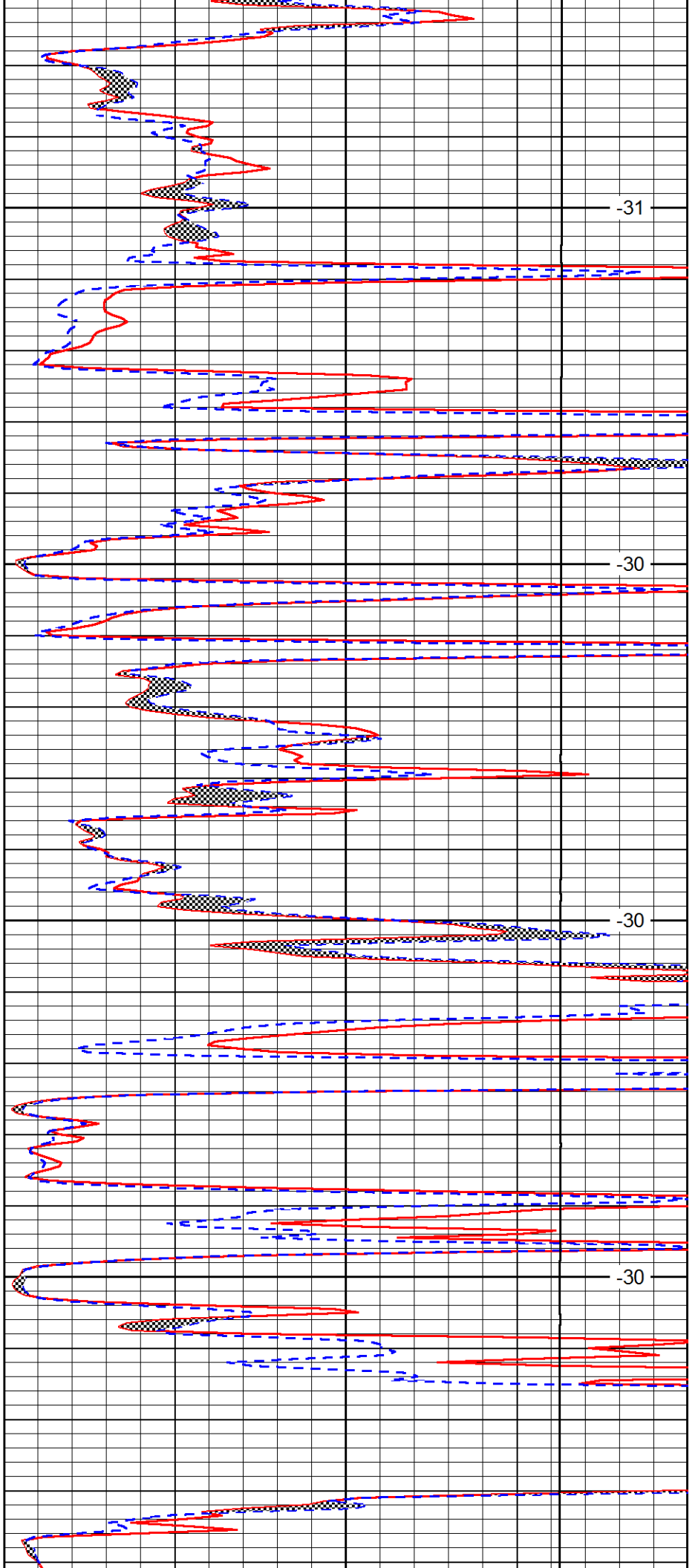


3050

3100

3150

3200

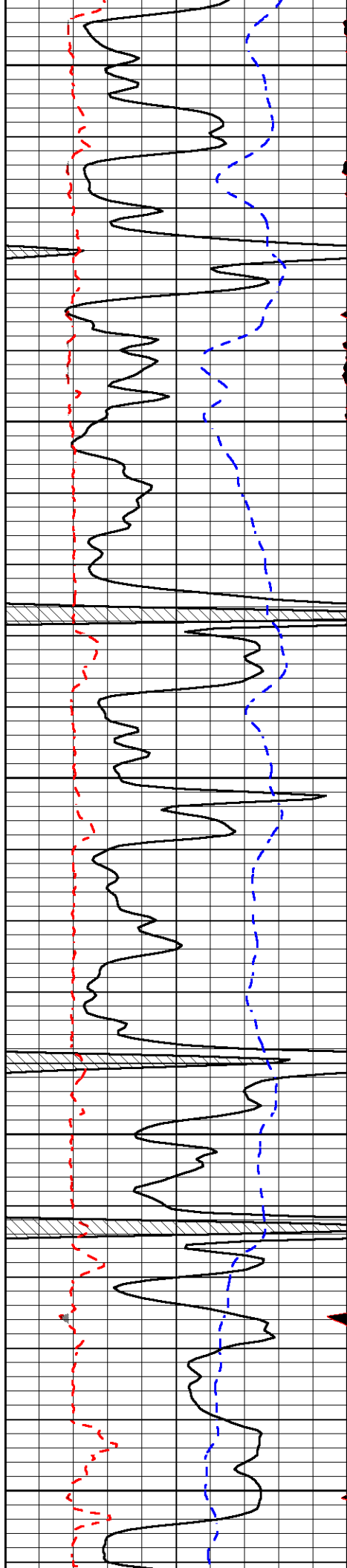


-31

-30

-30

-30



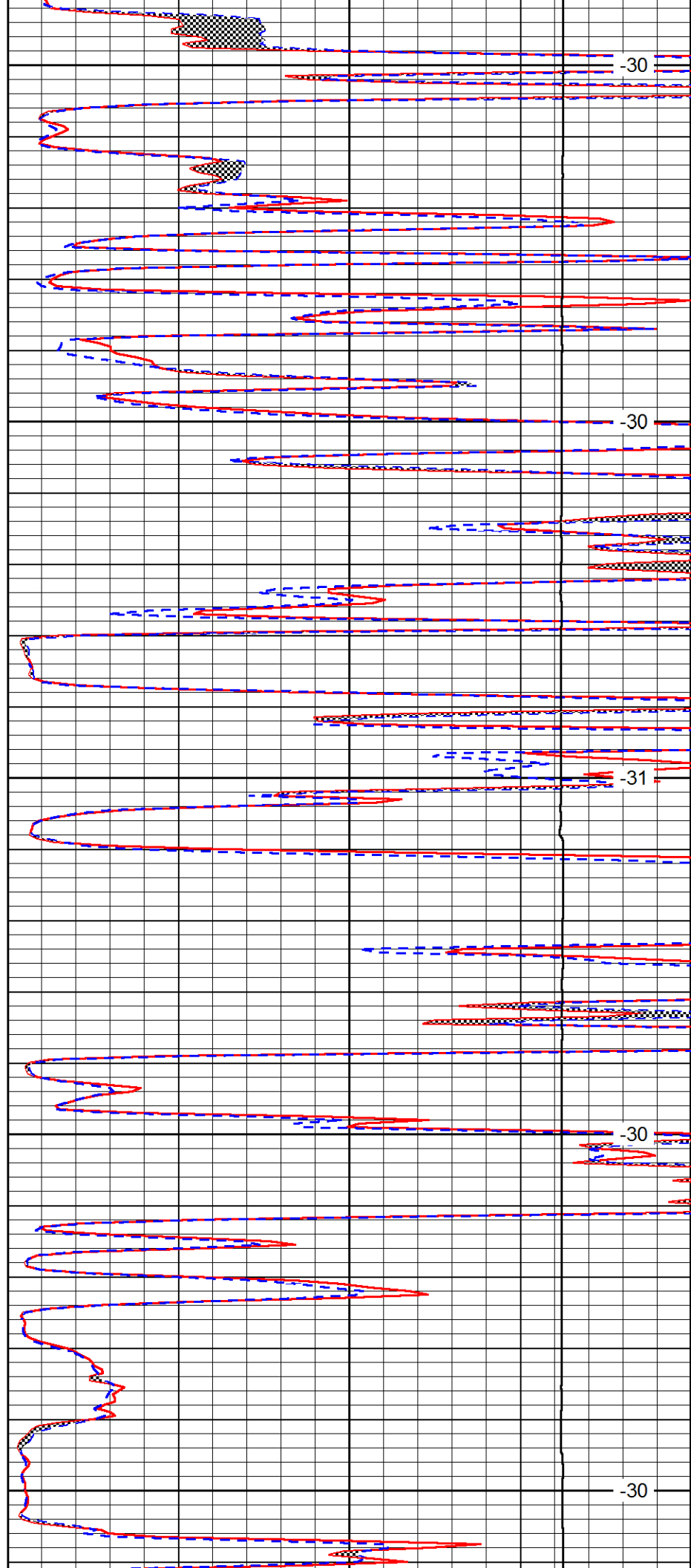
3250

3300

3350

3400

3450



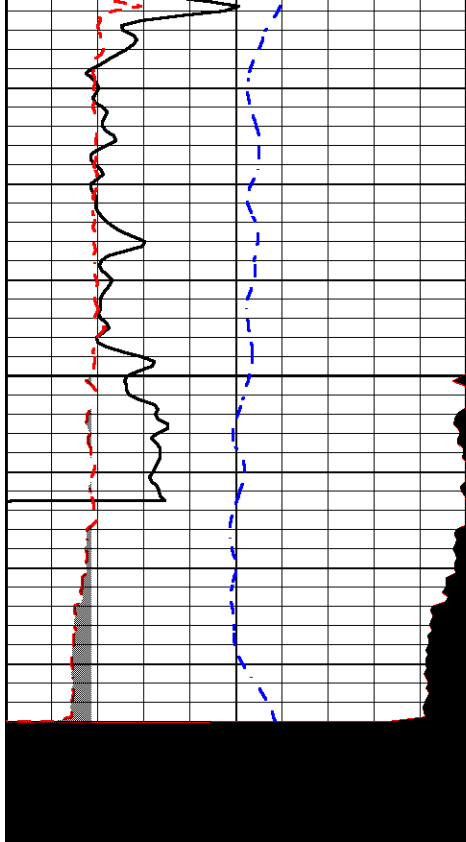
-30

-30

-31

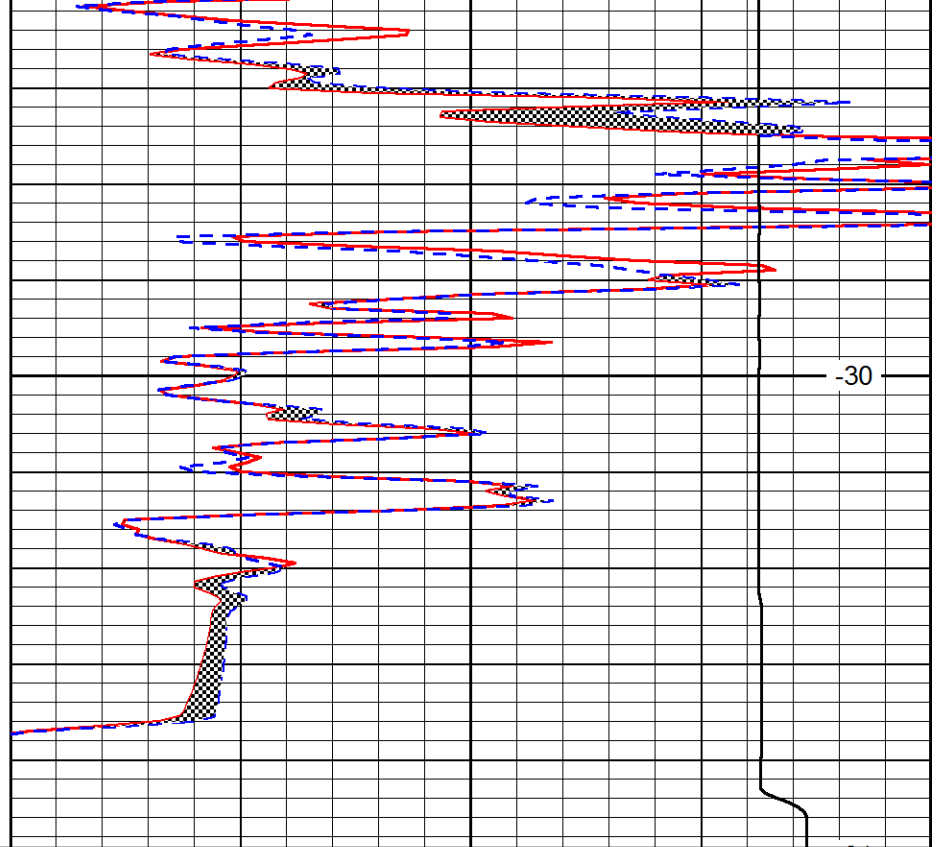
-30

-30



0	Gamma Ray (GAPI)	150
6	MCAL (in)	16
2.875	Mud Cake (in)	7.875
-200	SP (mV)	0

3500



0	Micro Inverse 1 X 1 (Ohm-m)	40
0	Micro Normal 2" (Ohm-m)	40
10000	Line Weight (lb)	0

-30

LSPD  
(ft/min)