



**COMPLETION
& PRODUCTION
SERVICES CO.**

**MICRO
LOG**

Company HERMAN L. LOEB, LLC.
Well CLARK #8
Field MOYER NORTHWEST
County SUMNER
State KANSAS

Company HERMAN L. LOEB, LLC.
Well CLARK #8
Field MOYER NORTHWEST
County SUMNER State KANSAS

Location: API # : 15-191-22767-0000
1686' FNL & 1980' FEL
S/2 - N/2 - SW - NE
SEC 2 TWP 31S RGE 3W
Permanent Datum GROUND LEVEL Elevation 1290
Log Measured From KELLY BUSHING 9' A.G.L.
Drilling Measured From KELLY BUSHING
Other Services
CDL/CNL/PE
DIL
Elevation
K.B. 1299
D.F. 1297
G.L. 1290

Date	1/14/15
Run Number	TWO
Depth Driller	3400
Depth Logger	3398
Bottom Logged Interval	3396
Top Log Interval	2000
Casing Driller	8 5/8"@259'
Casing Logger	259
Bit Size	7 7/8"
Type Fluid in Hole	CHEMICAL MUD
Density / Viscosity	9.4/53
pH / Fluid Loss	11.0/9.0
Source of Sample	FLOWLINE
Rim @ Meas. Temp	.900@50F
Rmf @ Meas. Temp	.675@50F
Rmc @ Meas. Temp	1.08@50F
Source of Rmf / Rmc	MEASUREMENT
Rim @ BHT	.405@111F
Time Circulation Stopped	3.5 HOURS
Time Logger on Bottom	8:45 A.M.
Maximum Recorded Temperature	111F
Equipment Number	4854
Location	HAYS, KANSAS
Recorded By	JEFF LUEBBERS
Witnessed By	JON CHRISTENSEN

<<< Fold Here >>>

All interpretations are opinions based on inferences from electrical or other measurements and we cannot and do not guarantee the accuracy or correctness of any interpretation, and we shall not, except in the case of gross or willful negligence on our part, be liable or responsible for any loss, costs, damages, or expenses incurred or sustained by anyone resulting from any interpretation made by any of our officers, agents or employees. These interpretations are also subject to our general terms and conditions set out in our current Price Schedule.

Comments

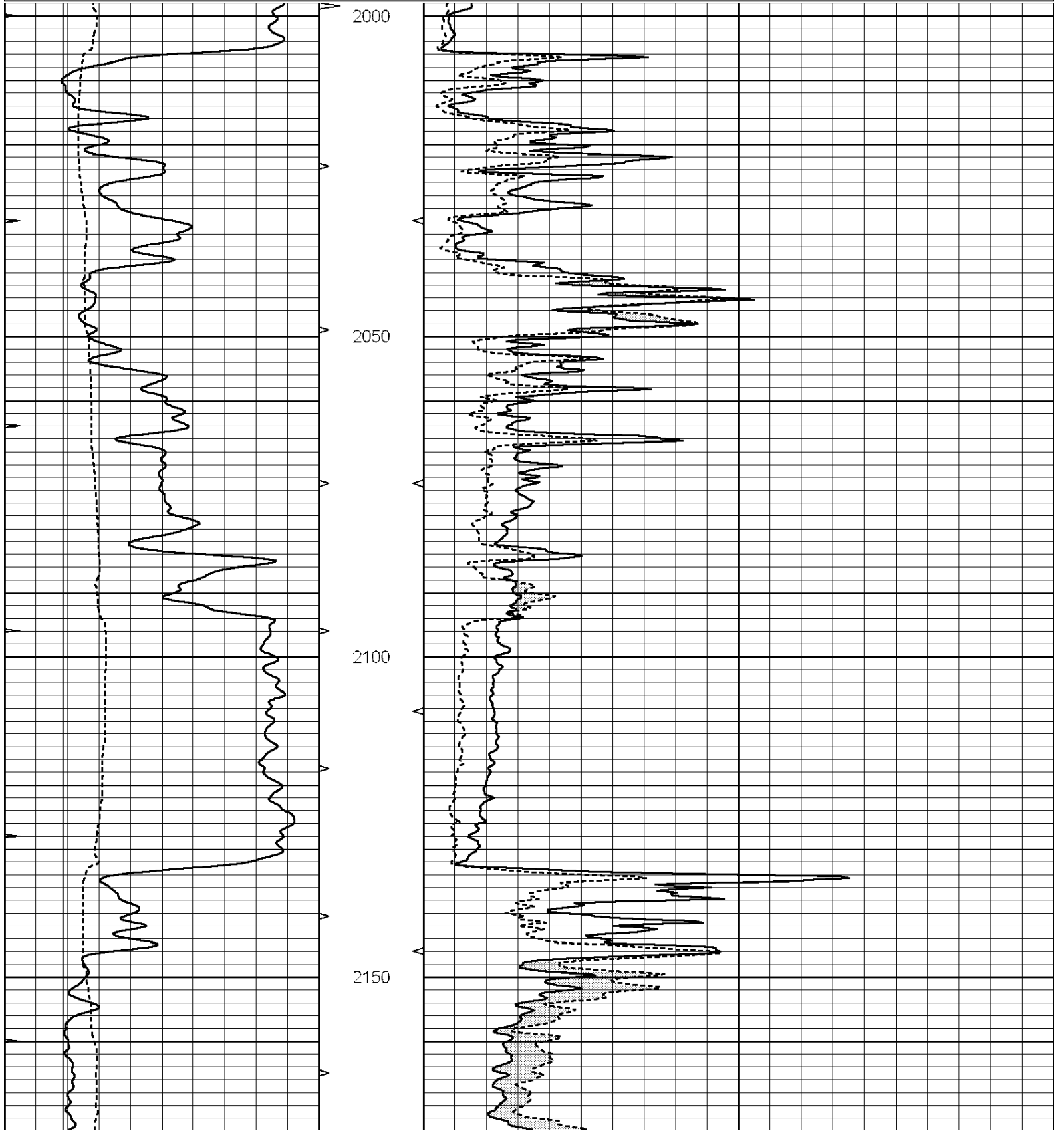
THANK YOU FOR USNG "NABORS" HAYS, KANSAS (785) 628-6395
DIRECTIONS
CONWAY SPRINGS, KS., (HWY 49 & PARALLEL RD.) S. SIDE OF TOWN, 2E. TO "CALDWELL RD.",
1/2S.TO TANK BATTERY, W. INTO & BACK NORTH

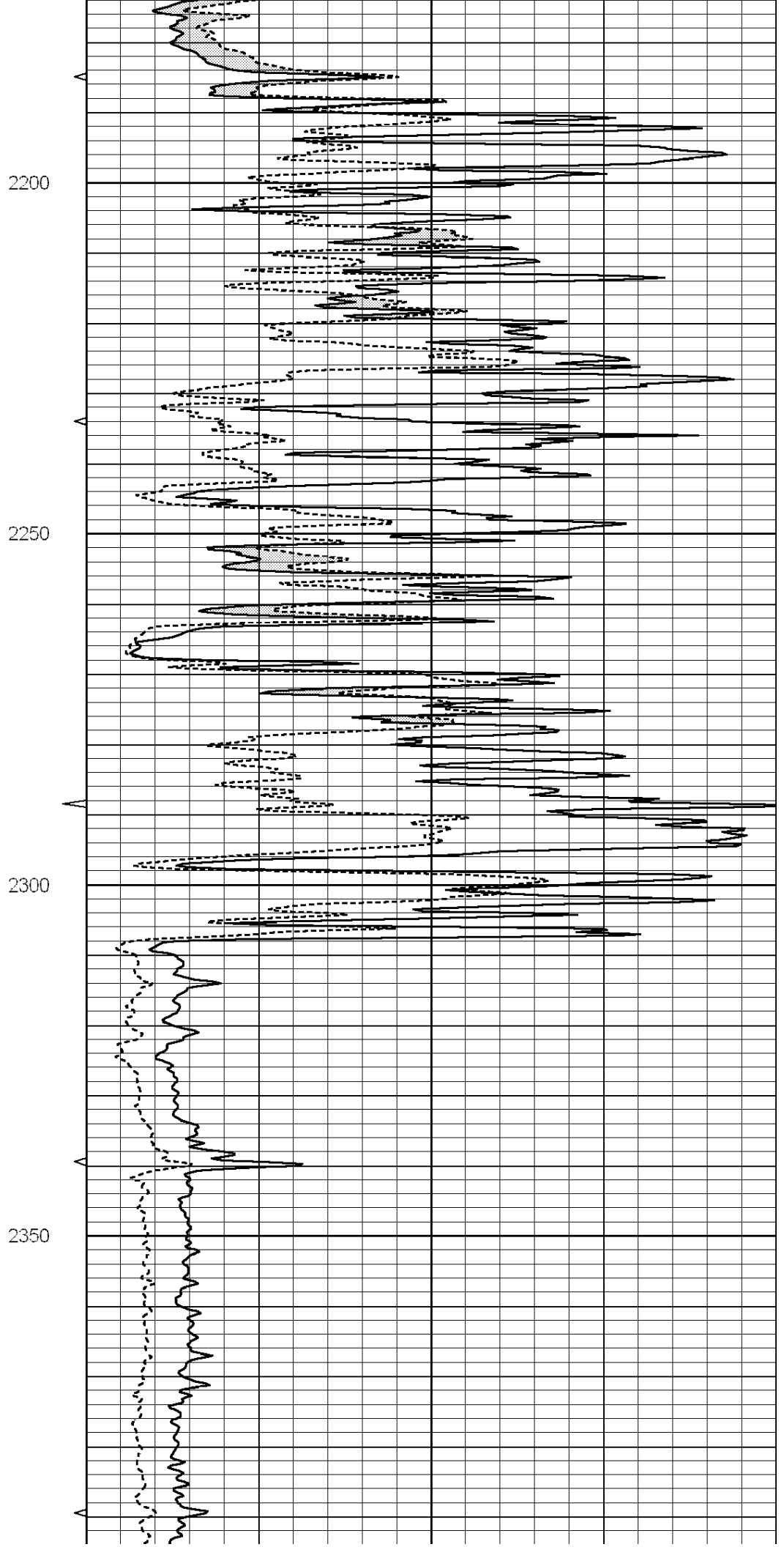
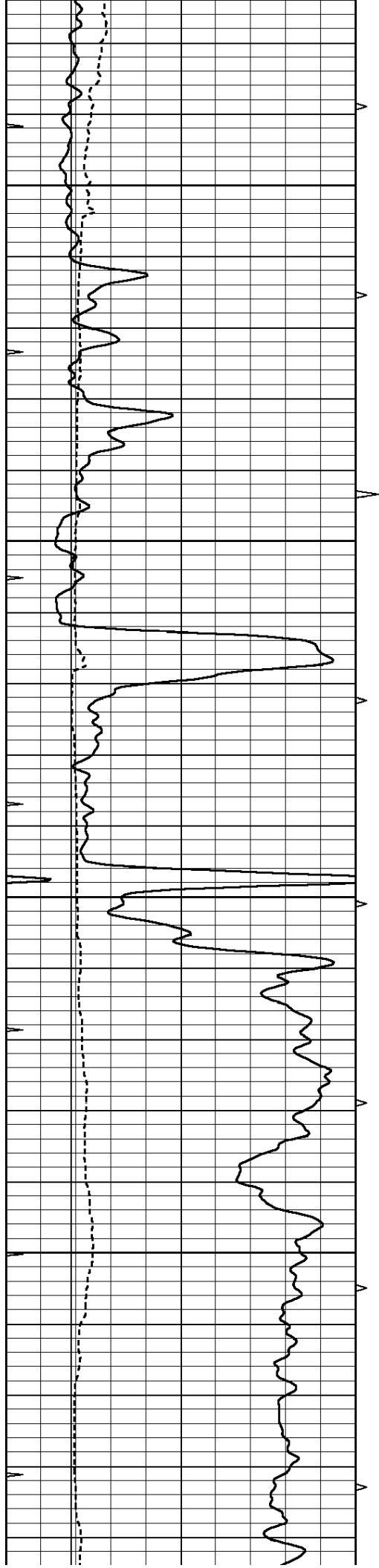


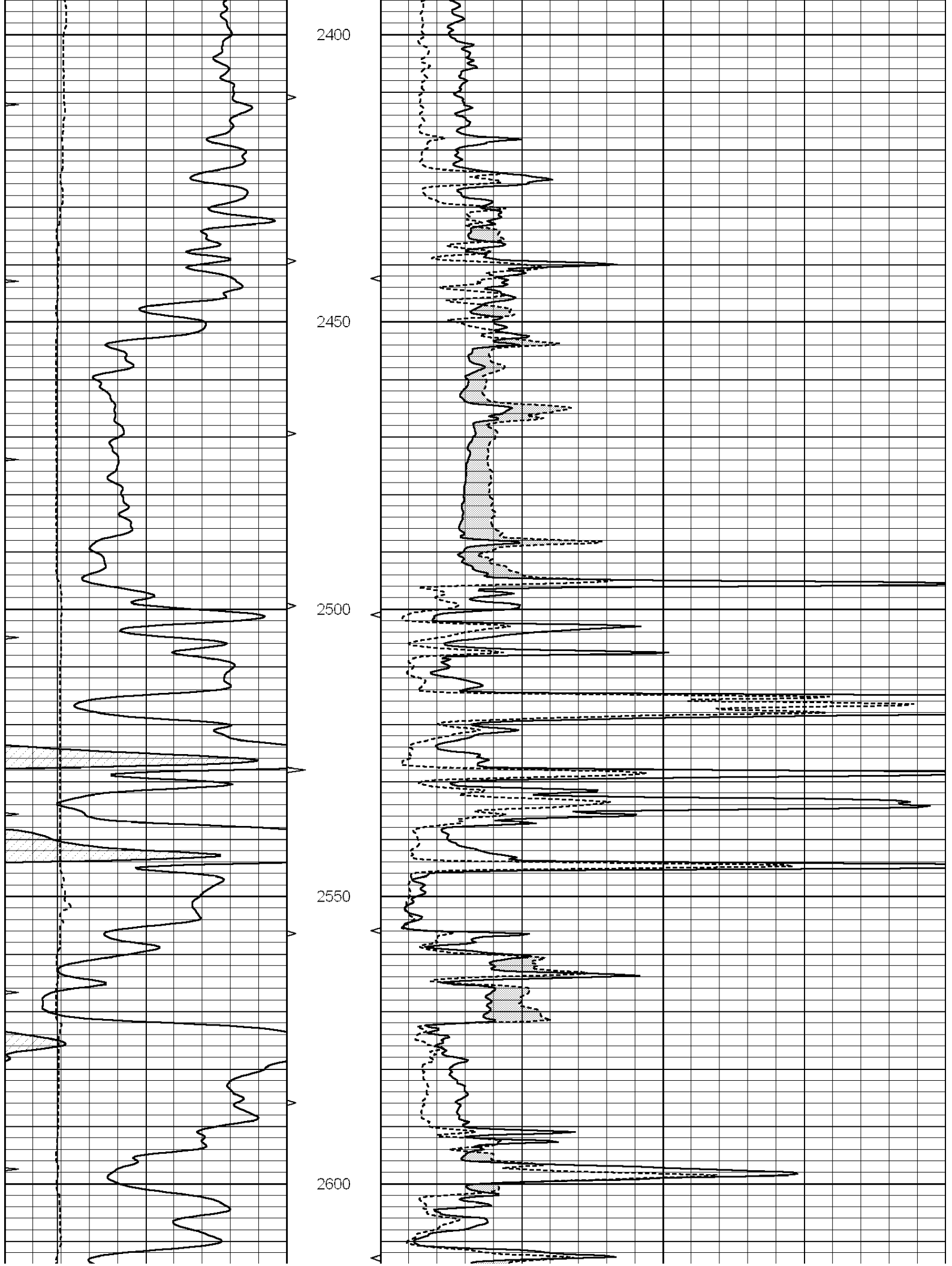
MAIN SECTION

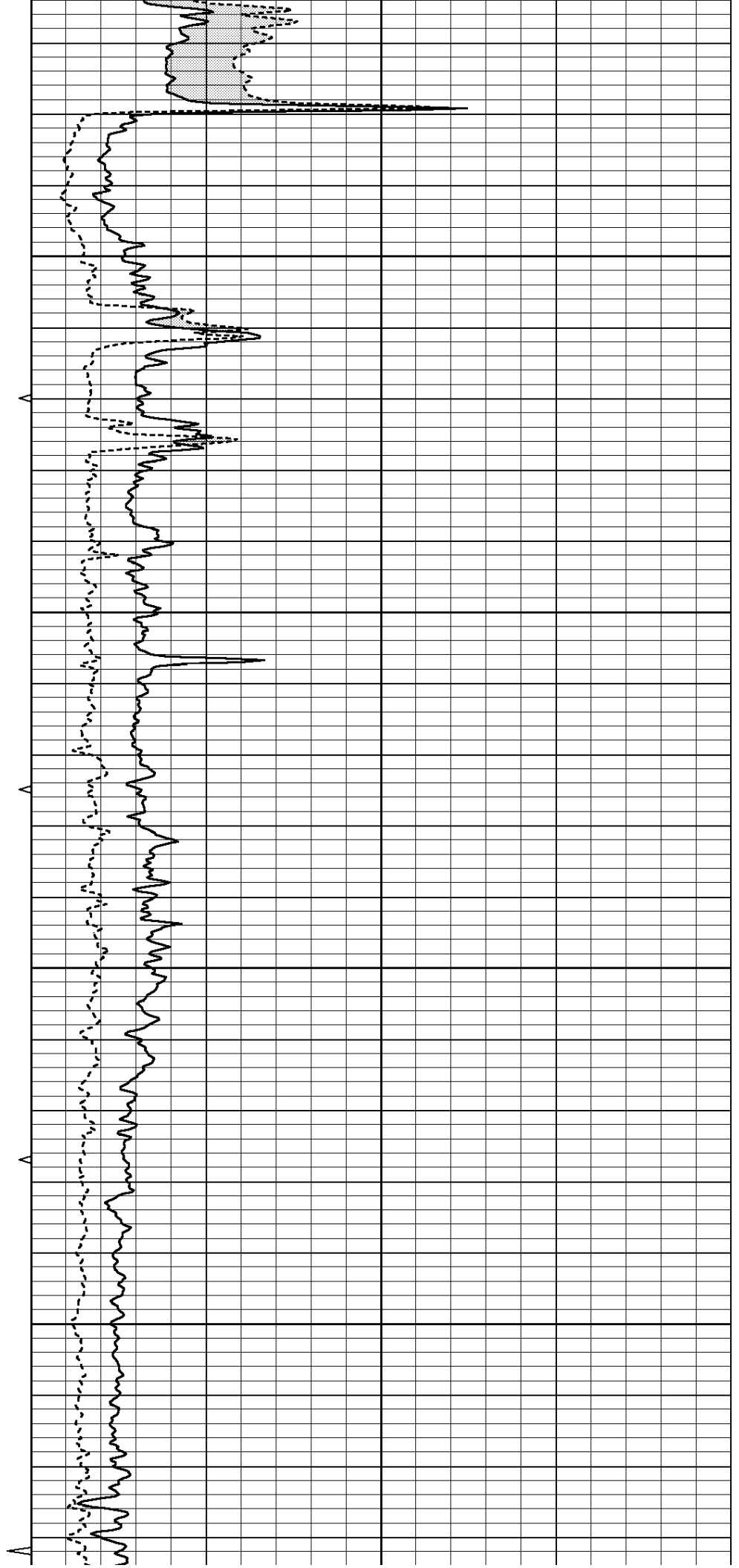
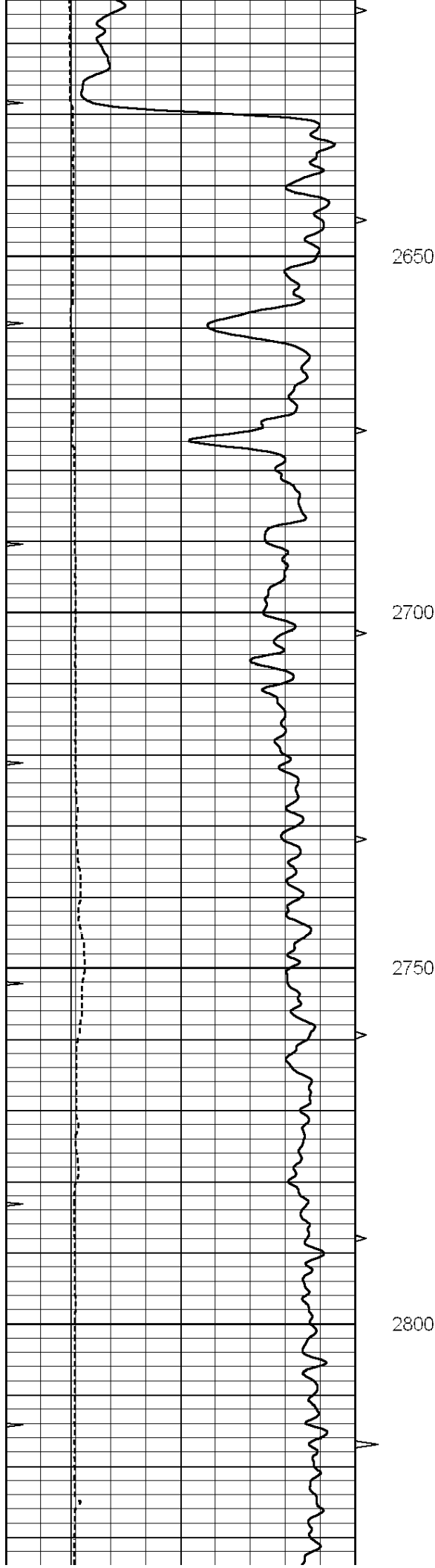
Database File: 266337pe.db
 Dataset Pathname: pass6.1
 Presentation Format: micro
 Dataset Creation: Wed Jan 14 11:52:40 2015 by Calc SOC 120430
 Charted by: Depth in Feet scaled 1:240

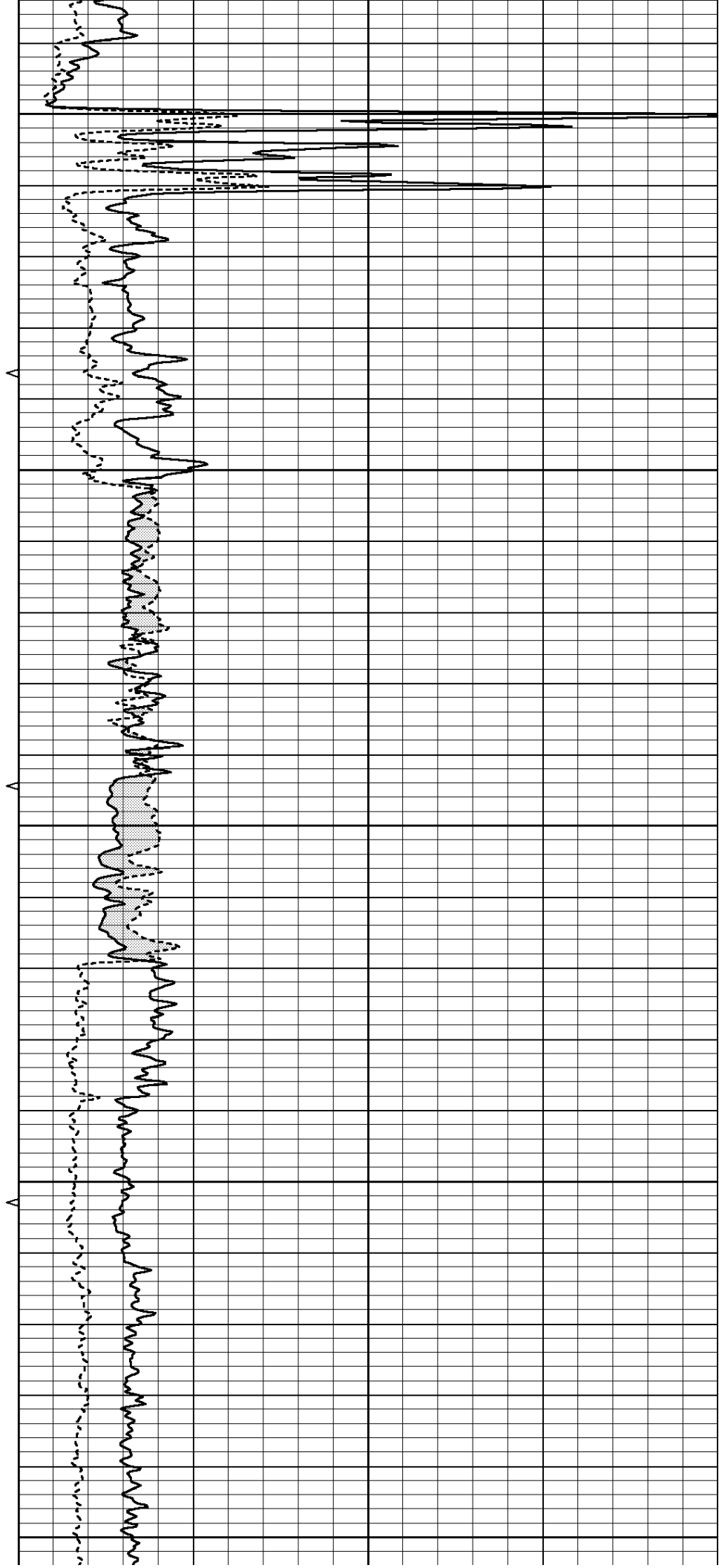
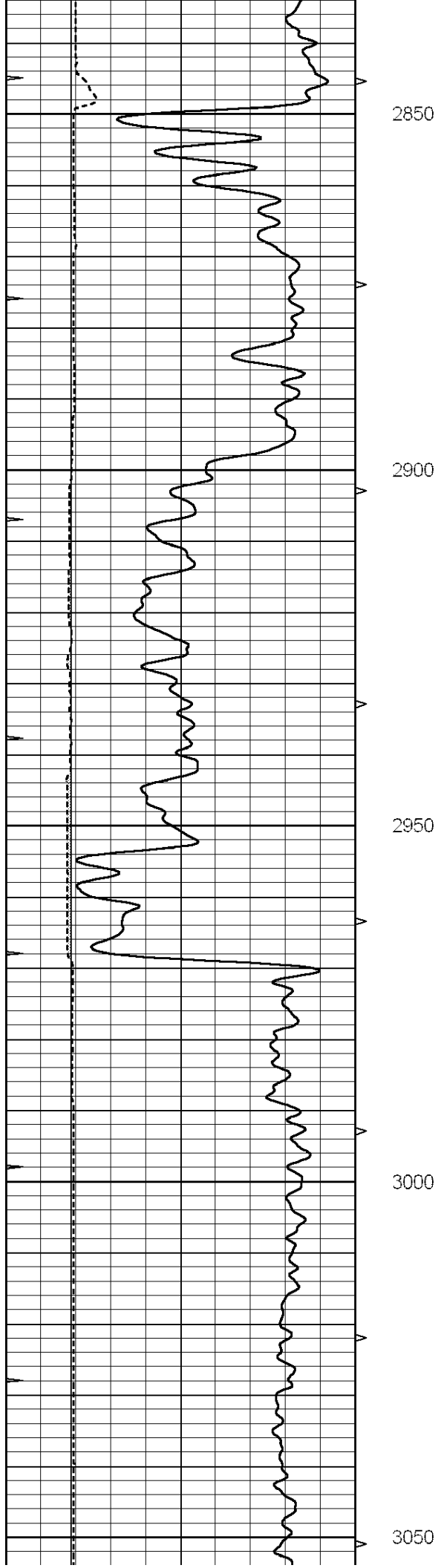
0	GAMMA RAY (GAPI)	150	ABHV	0	MEL1.5 (Ohm-m)	40
6	CALIPER (in)	16	10 (ft3)	0	MEL 20 (Ohm-m)	40
0	MINMK	20	TBHV			
			0 (ft3)	10		

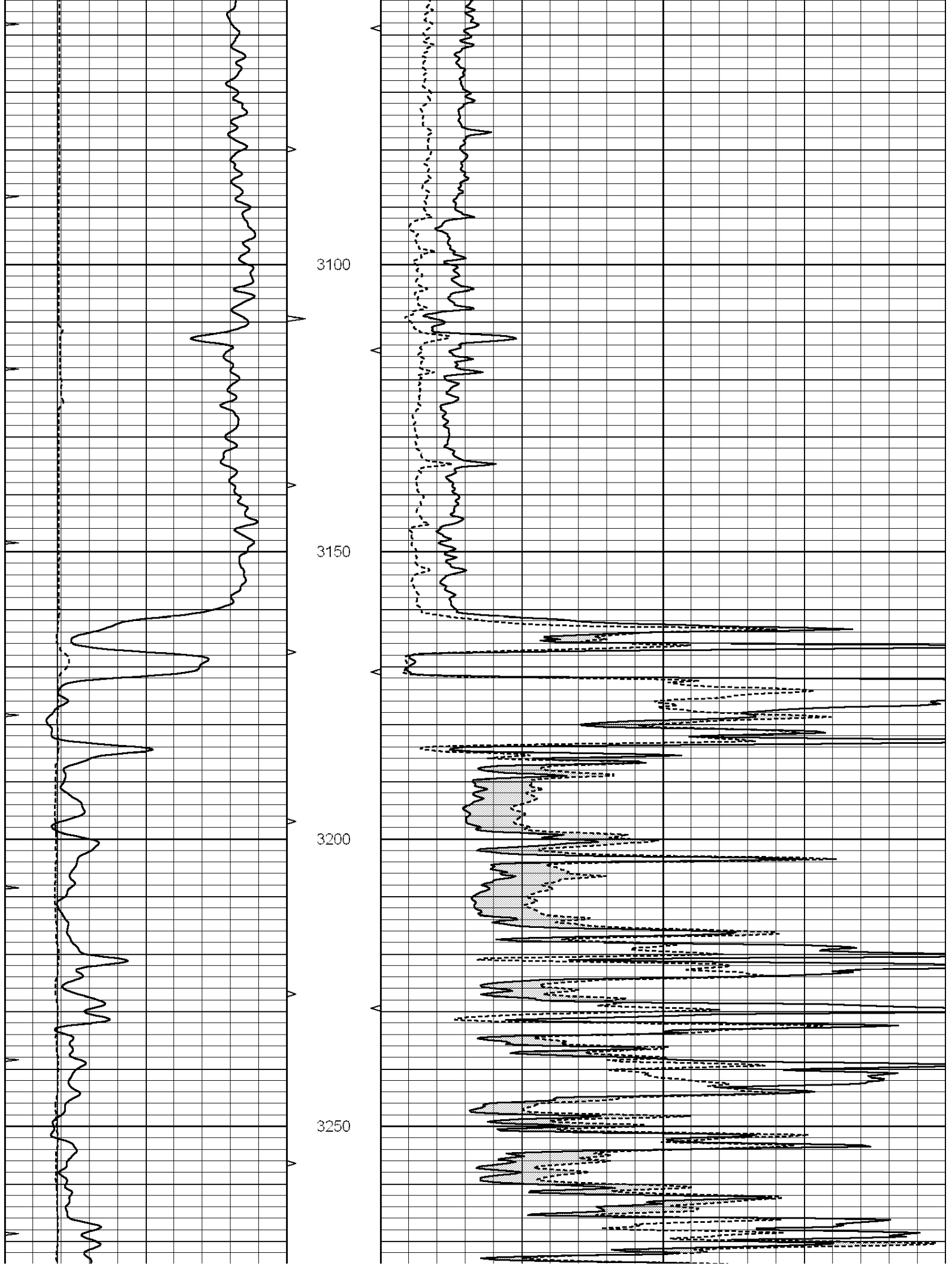


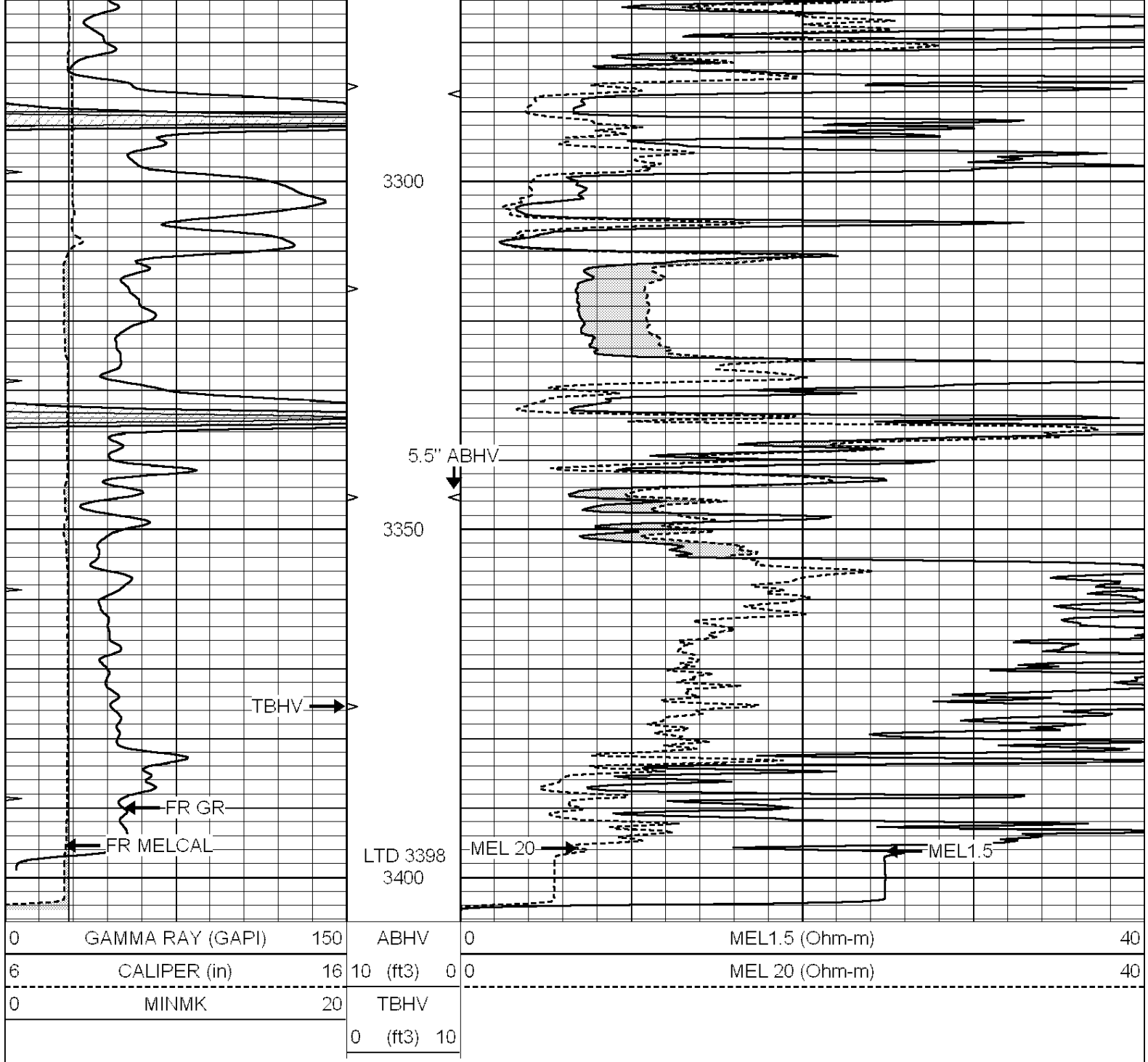








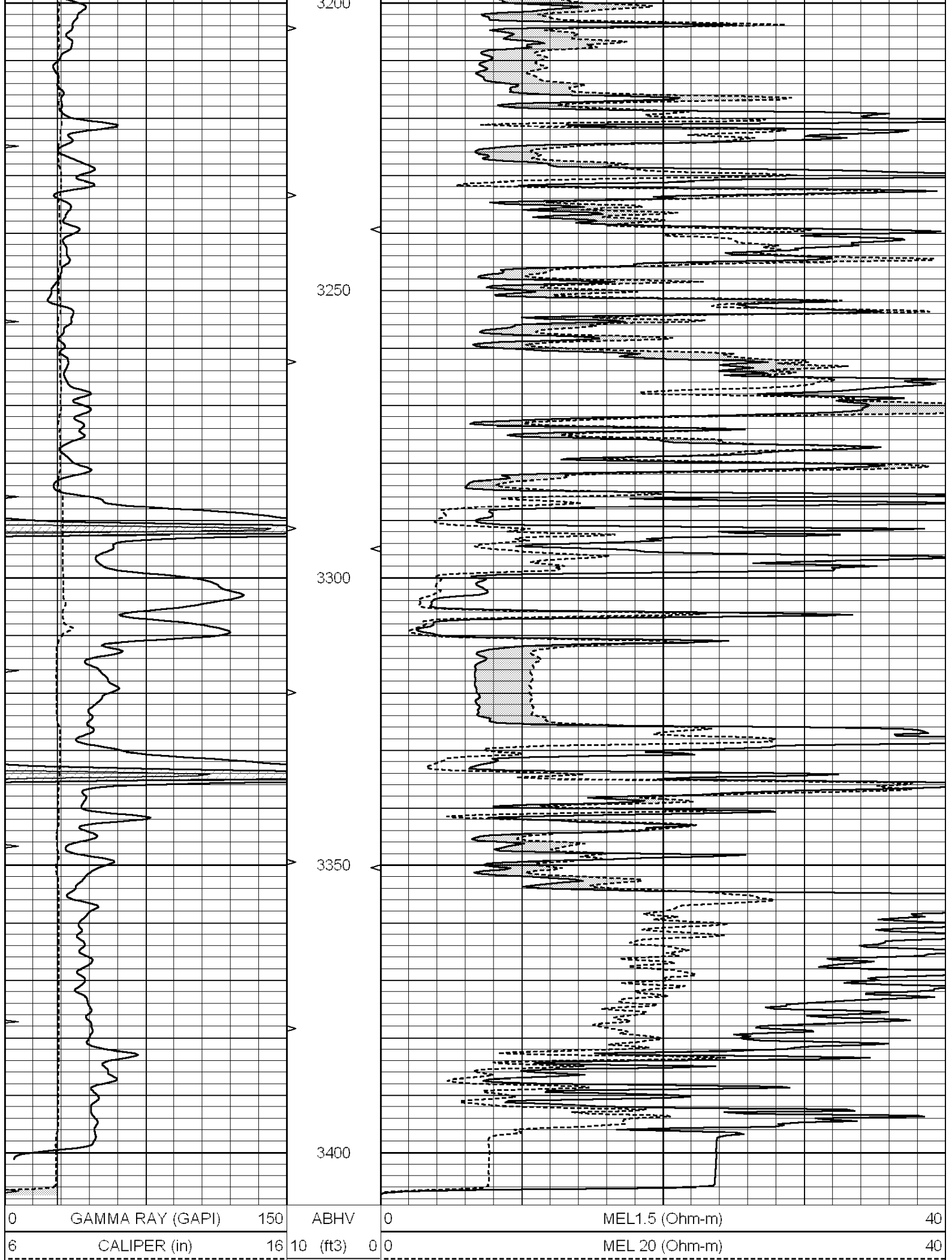




REPEAT SECTION

Database File: 266337pe.db
 Dataset Pathname: pass5.5
 Presentation Format: micro
 Dataset Creation: Wed Jan 14 11:16:35 2015 by Calc SOC 120430
 Charted by: Depth in Feet scaled 1:240

0	GAMMA RAY (GAPI)	150	ABHV	0	MEL1.5 (Ohm-m)	40
6	CALIPER (in)	16	10 (ft3)	0	MEL 20 (Ohm-m)	40
0	MINMK	20	TBHV			
			0 (ft3)	10		



0	GAMMA RAY (GAPI)	150	ABHV	0	MEL1.5 (Ohm-m)	40
6	CALIPER (in)	16	10 (ft ³)	0	MEL 20 (Ohm-m)	40

0	MINMK	20	TBHV
		0	(ft3) 10

Calibration Report

Database File: 266337pe.db
Dataset Pathname: pass6.1
Dataset Creation: Wed Jan 14 11:52:40 2015 by Calc SOC 120430

MICRO Calibration Report

Serial Number: 070911
Tool Model: ProbeN
Performed: Wed Jan 14 11:03:42 2015

Caliper Calibration:	Gain=3.323	Offset=3.713
	Low Cal	High Cal
References	7.700	18.000
Readings	1.200	4.300

1.5" Calibration:	Gain=20.000	Offset=0.000
	Low Cal	High Cal
References	0.000	20.000
Readings	0.001	1.240

2" Calibration:	Gain=36.000	Offset=-0.700
	Low Cal	High Cal
References	0.000	20.000
Readings	0.001	1.076

Gamma Ray Calibration Report

Serial Number: 070559
Tool Model: OPEN_GR
Performed: Wed Nov 26 00:22:56 2014

Calibrator Value:	1.0	GAPI
Background Reading:	0.0	cps
Calibrator Reading:	1.0	cps
Sensitivity:	0.2200	GAPI/cps