



DUAL INDUCTION
LL3/GR LOG

Company DOUBLE "D" OIL COMPANY, INC.
Well ANDES # 4 D & M
Field MADDIX NORTH
County COWLEY
State KANSAS

Company DOUBLE "D" OIL COMPANY, INC.
Well ANDES # 4 D & M
Field MADDIX NORTH
County COWLEY State KANSAS

Location: API #: 15-035-24629-0000
E2 NW NE SE
2310' FSL & 988' FEL
SEC 1 TWP 33S RGE 5E
Permanent Datum GL Elevation 1300'
Log Measured From KB
Drilling Measured From KB
Other Services CDL/SWN
Elevation K.B. 1304'
D.F. 1303'
G.L. 1300'

Date	12-11-2014
Run Number	ONE
Depth Driller	3350'
Depth Logger	3350'
Bottom Logged Interval	3348'
Top Log Interval	SURFACE
Casing Driller	8 5/8" @ 211'
Casing Logger	8 5/8" @ 211'
Bit Size	7 7/8"
Type Fluid in Hole	CHEMICAL
Density / Viscosity	9.0 / 46
pH / Fluid Loss	9.0 / 8.4
Source of Sample	FLOWLINE
Rm @ Meas. Temp	2.0 @ 60
Rmf @ Meas. Temp	1.8 @ 60
Rmc @ Meas. Temp	2.4 @ 60
Source of Rmf / Rmc	CAL
Rm @ BHT	1.2 @ 112
Time Circulation Stopped	3:30 PM
Time Logger on Bottom	7:15 PM
Maximum Recorded Temperature	112
Equipment Number	OW2
Location	HOMINY, OK
Recorded By	LOWERY
Witnessed By	MR. BUTLER
	MR. OAST

<<< Fold Here >>>

All interpretations are opinions based on inferences from electrical or other measurements and we cannot and do not guarantee the accuracy or correctness of any interpretation, and we shall not, except in the case of gross or willful negligence on our part, be liable or responsible for any loss, costs, damages, or expenses incurred or sustained by anyone resulting from any interpretation made by any of our officers, agents or employees. These interpretations are also subject to our general terms and conditions set out in our current Price Schedule.

Comments

OW2-8781
CREW : SHAMBLES

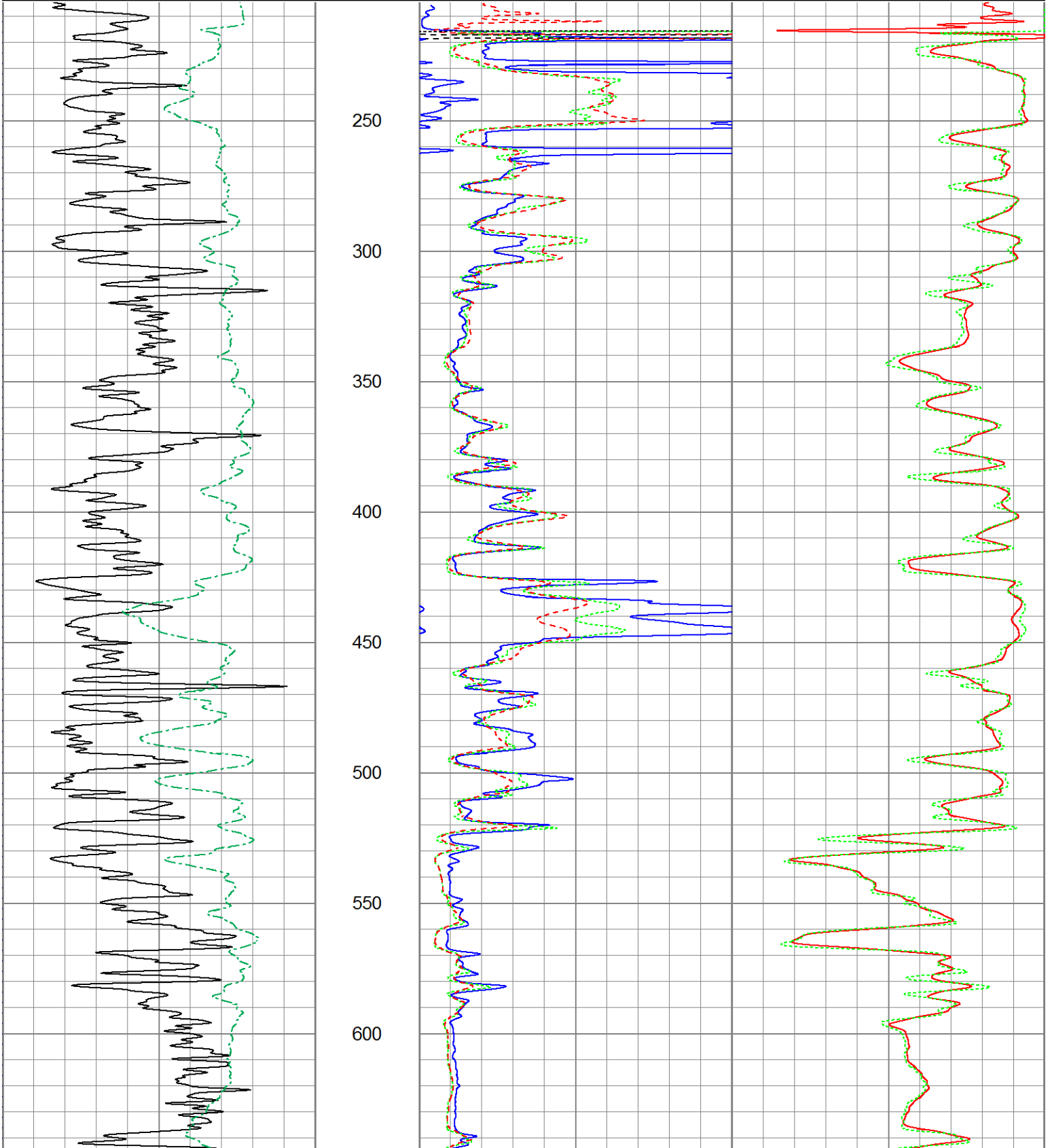


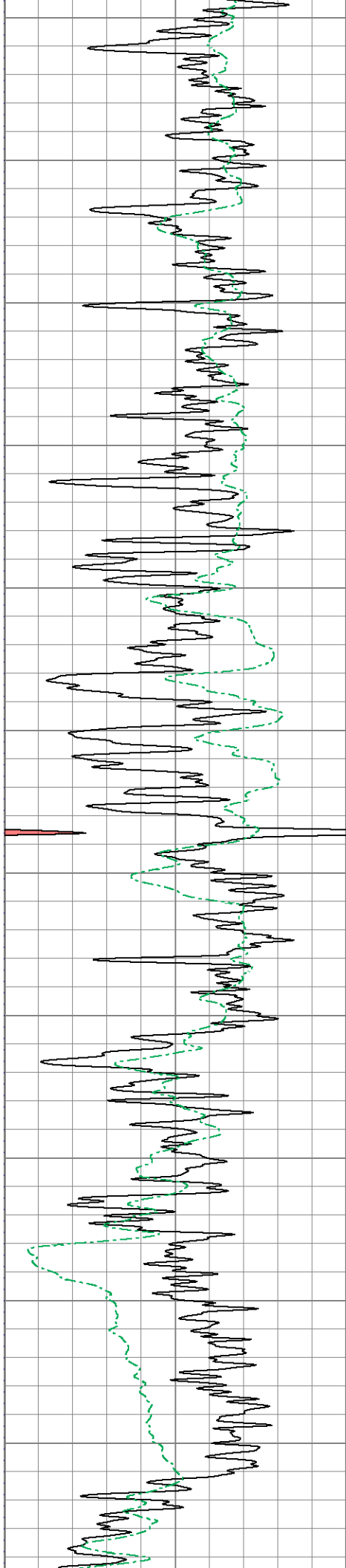
2" DIL SECTION

Database File ow2-8781 doube d.db
 Dataset Pathname DIL/pass1.4
 Presentation Format dil2mdcol
 Dataset Creation Thu Dec 11 21:30:04 2014
 Charted by Depth in Feet scaled 1:600

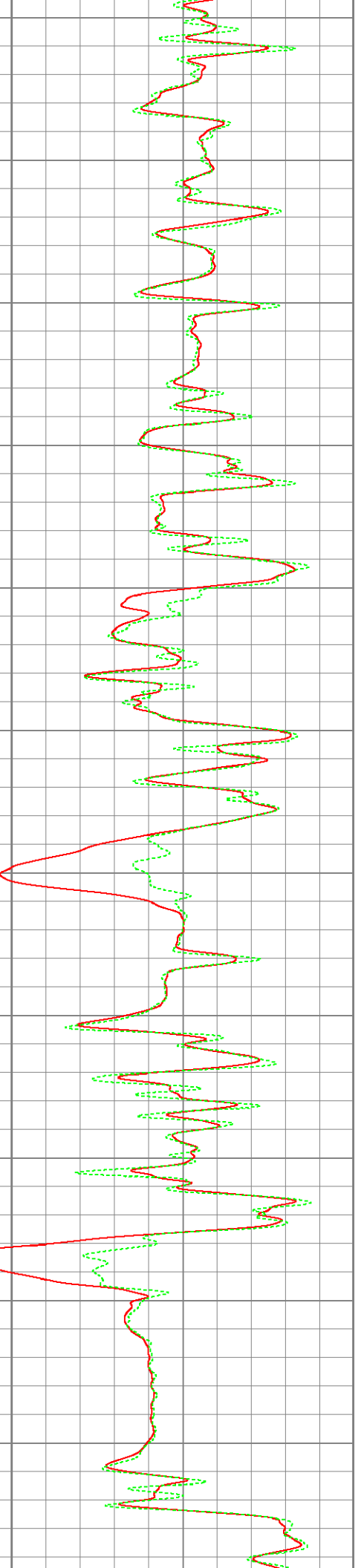
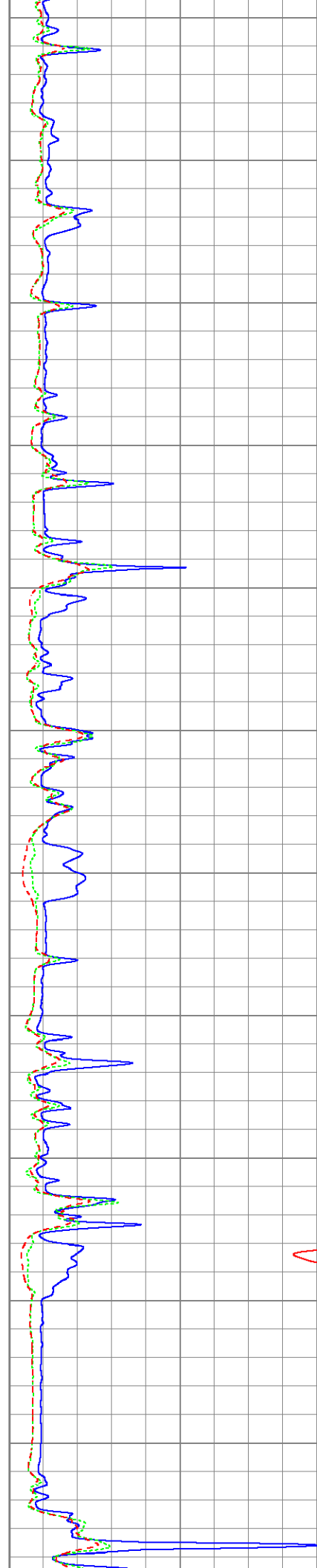
0	GR (GAPI)	150
0	SP (mV)	200

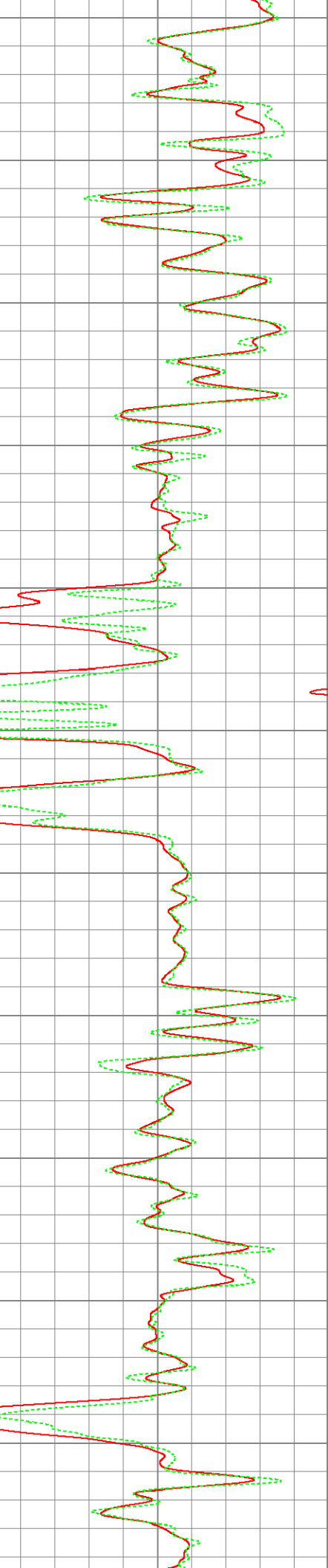
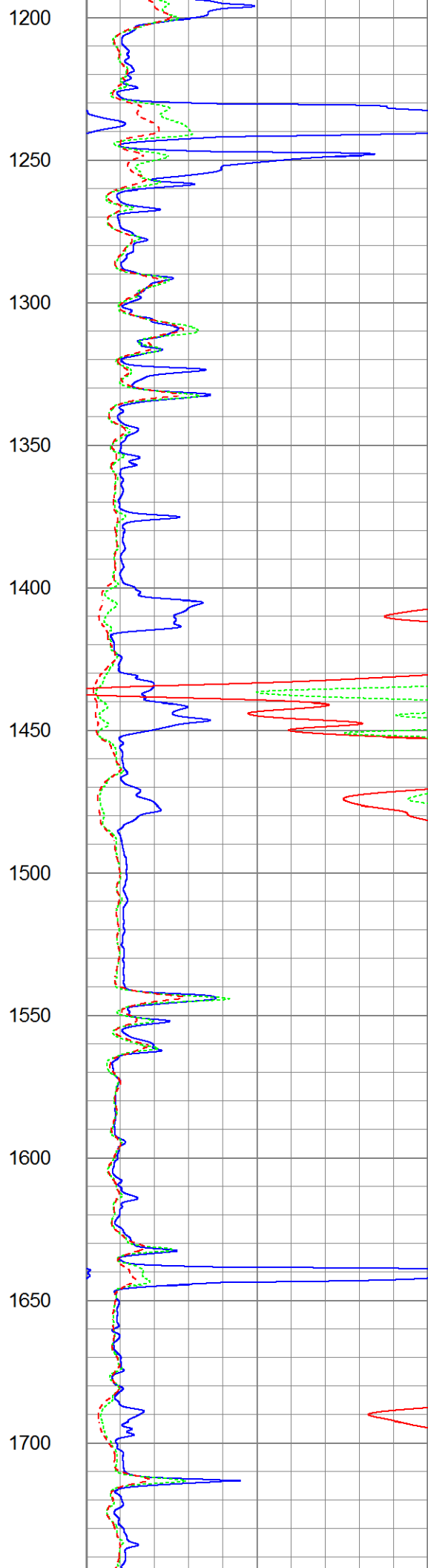
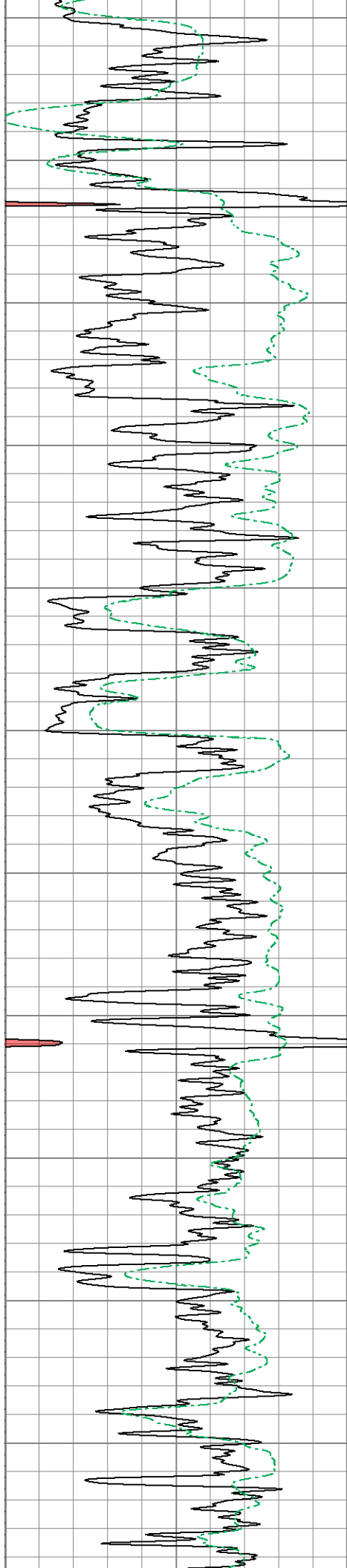
1000	CILD (mmho/m)	0
1000	CILM (mmho/m)	0
0	RLL3 (Ohm-m)	50
0	RILM (Ohm-m)	50
0	RILD (Ohm-m)	50

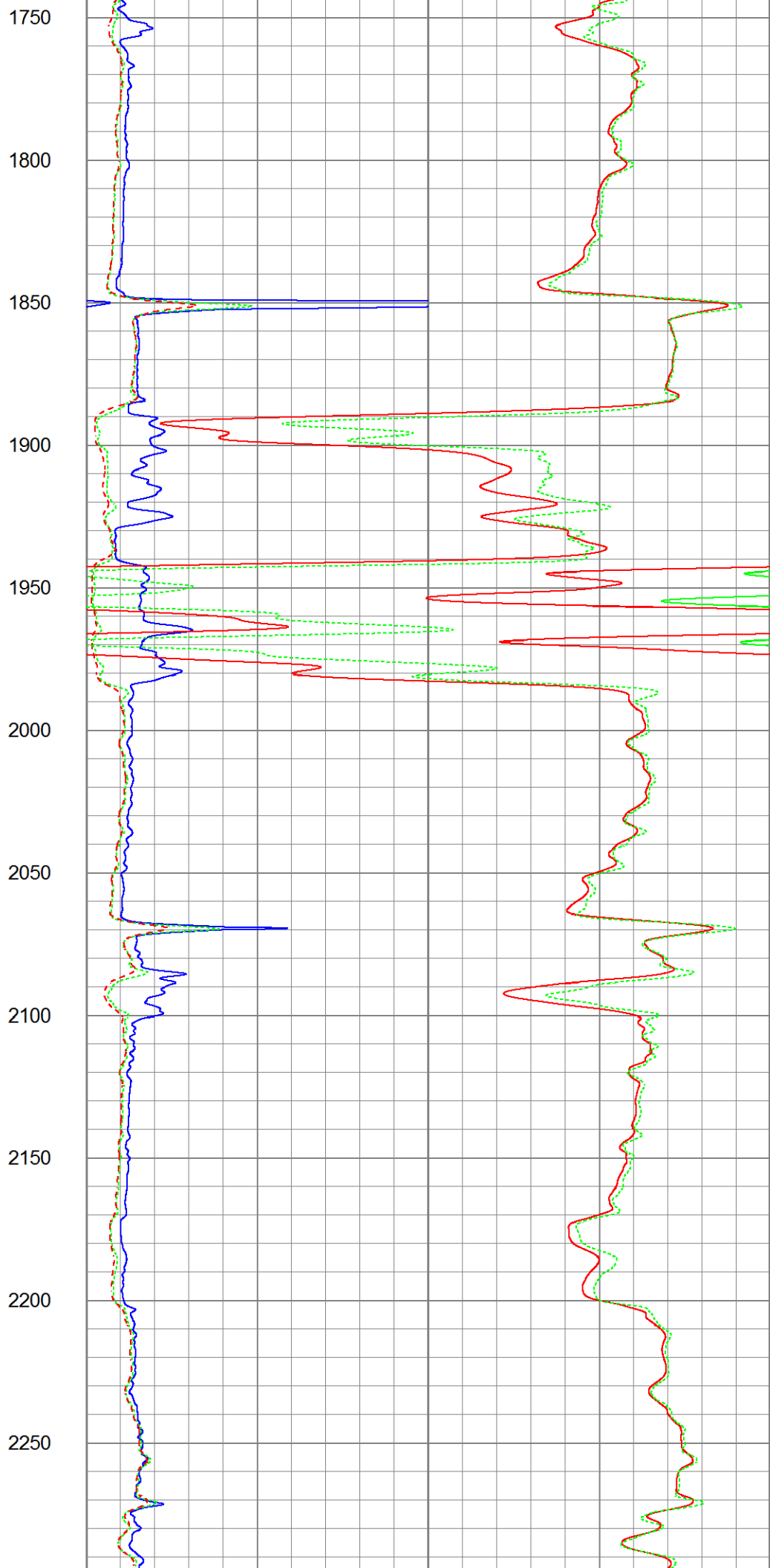
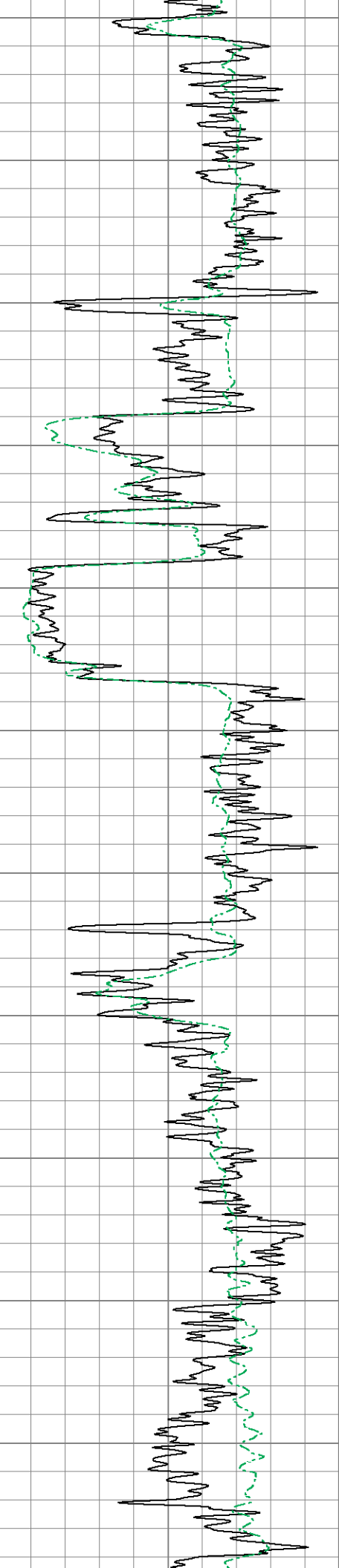


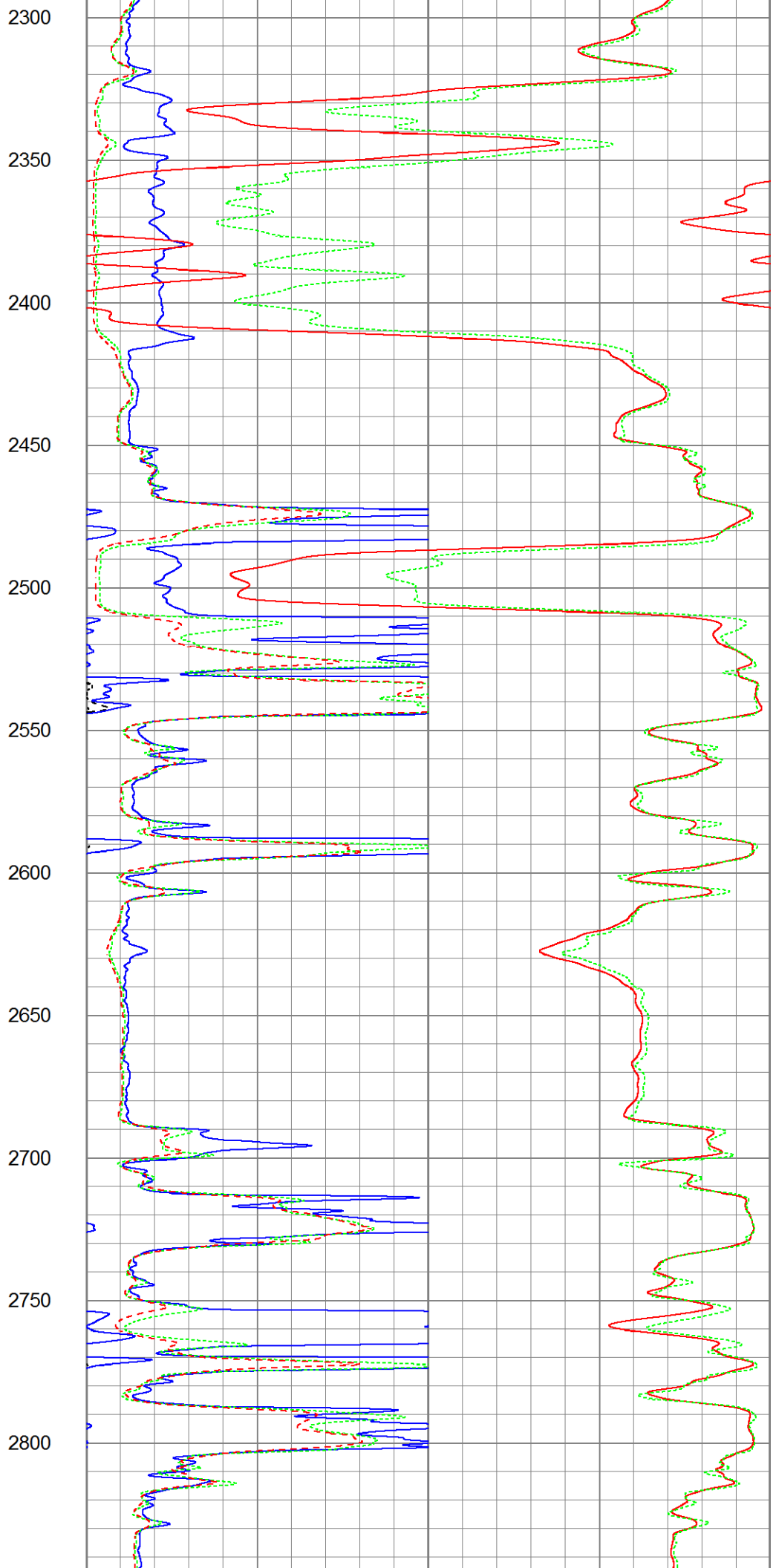
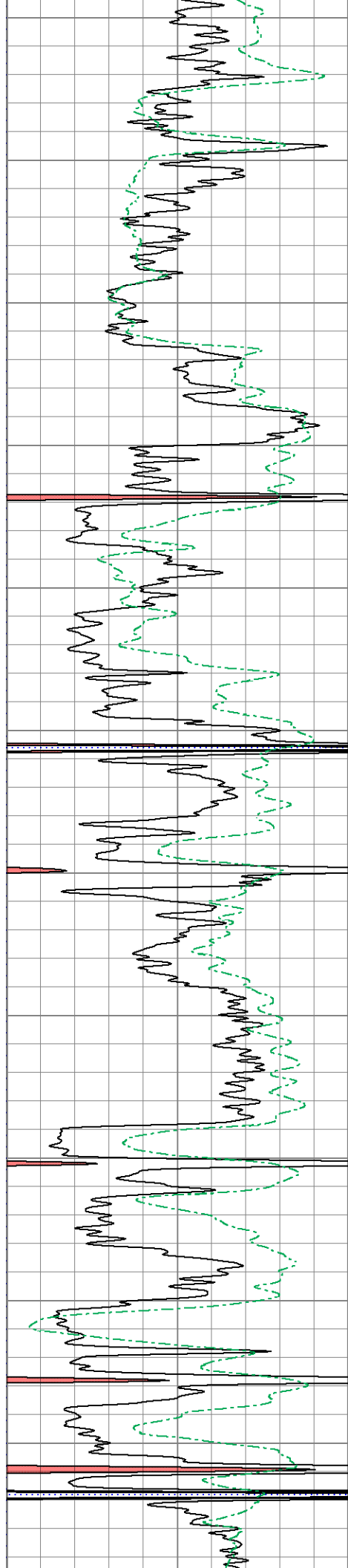


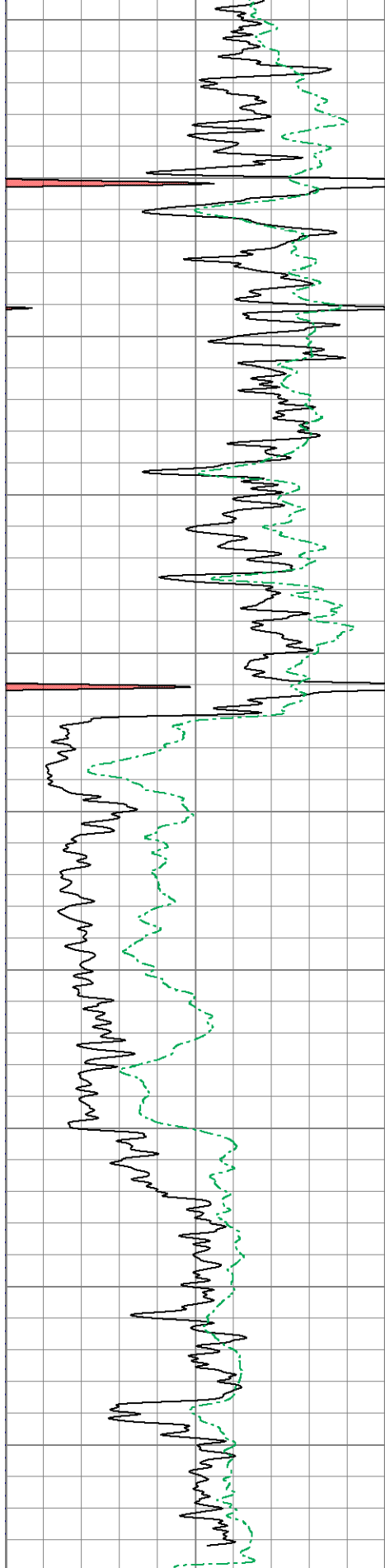
650
700
750
800
850
900
950
1000
1050
1100
1150



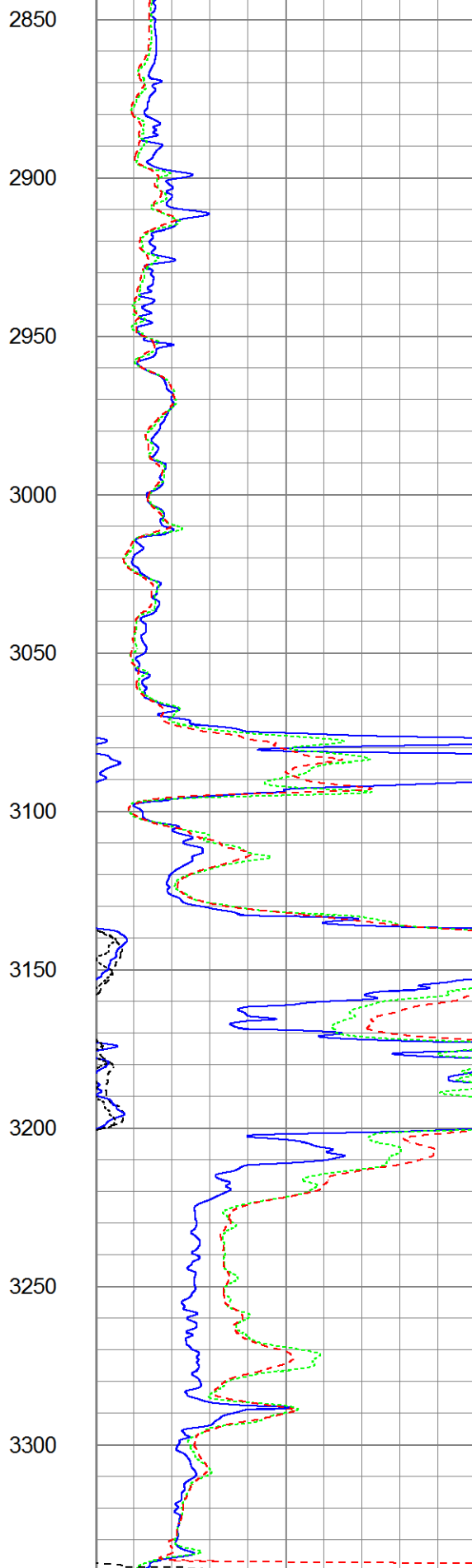








0	GR (GAPI)	150
0	SP (mV)	200



1000	RLL3 (Ohm-m)	50
1000	RILM (Ohm-m)	50



0	CILD (mmho/m)	0
0	CILM (mmho/m)	0

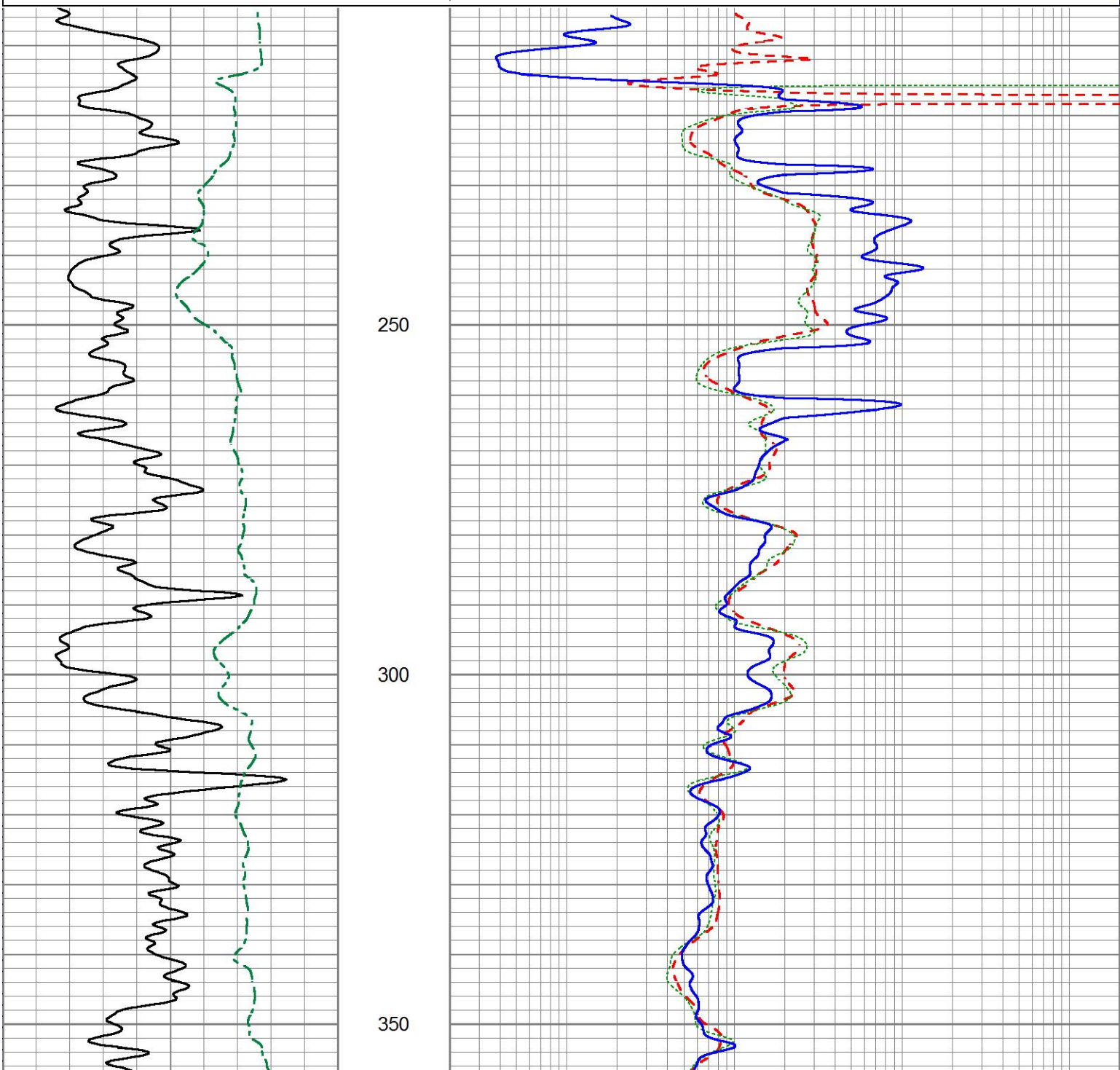


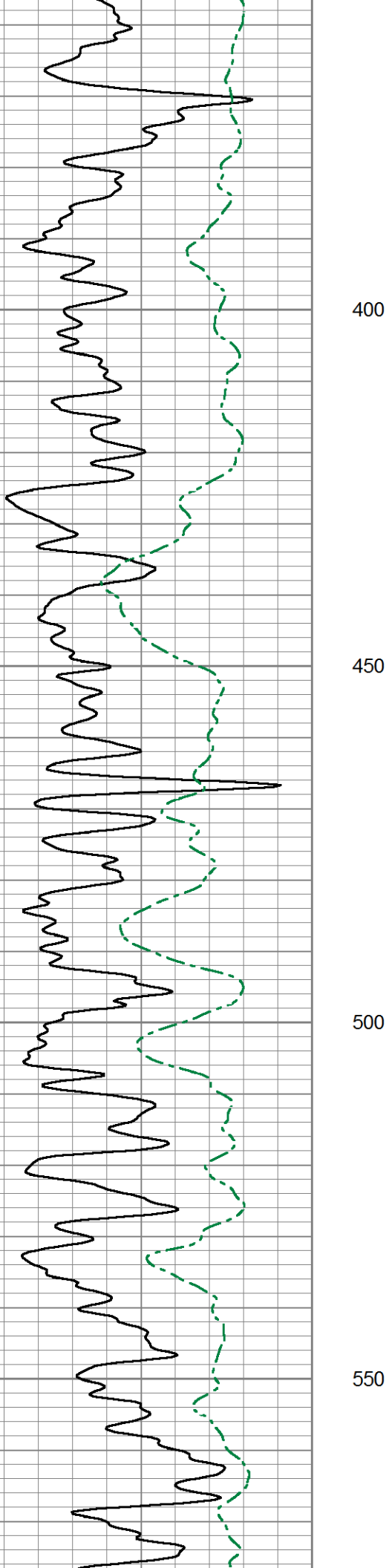
5" DIL SECTION

Database File ow2-8781 doube d.db
 Dataset Pathname DIL/pass1.3
 Presentation Format dil5mdcol
 Dataset Creation Thu Dec 11 21:29:57 2014
 Charted by Depth in Feet scaled 1:240

0	Gamma Ray (GAPI)	150
0	SP (mV)	200

0.2	Deep Resistivity (Ohm-m)	2000
0.2	Medium Resistivity (Ohm-m)	2000
0.2	Shallow Resistivity (Ohm-m)	2000



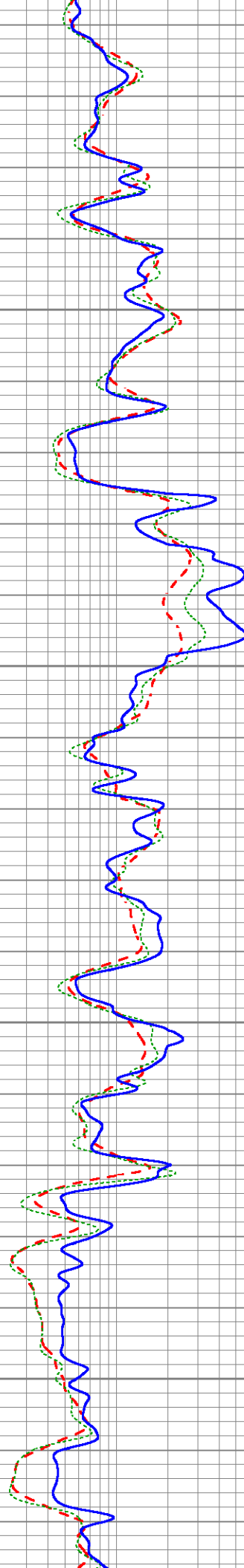


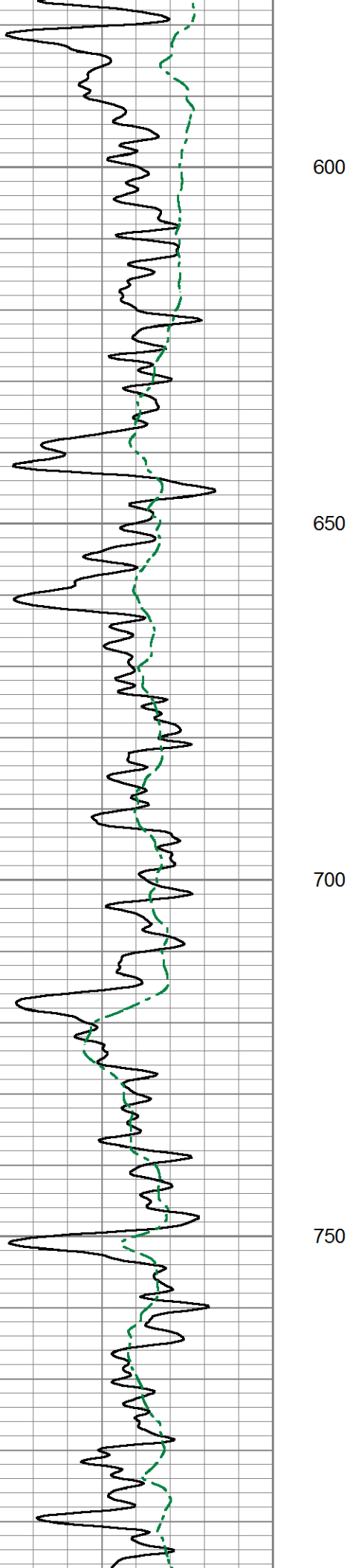
400

450

500

550





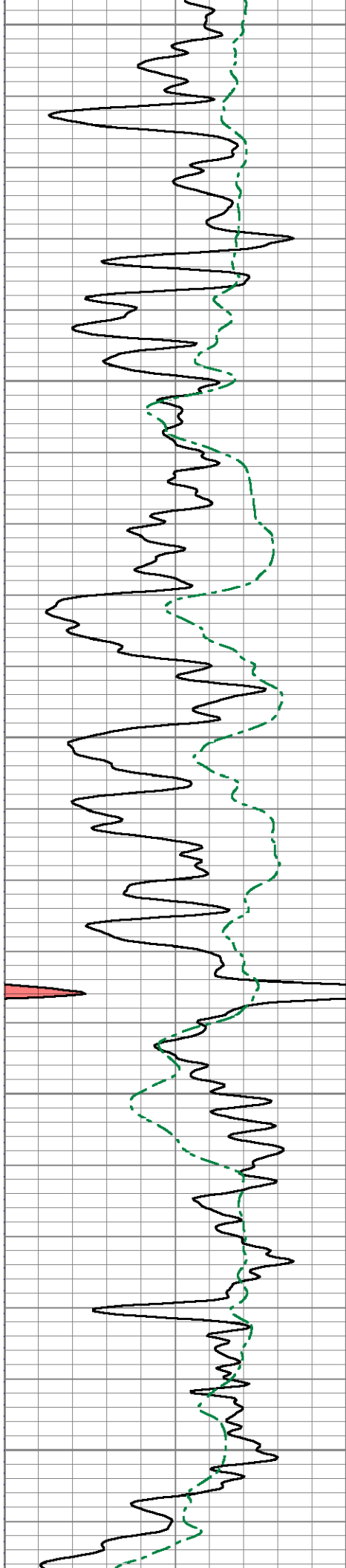
600

650

700

750





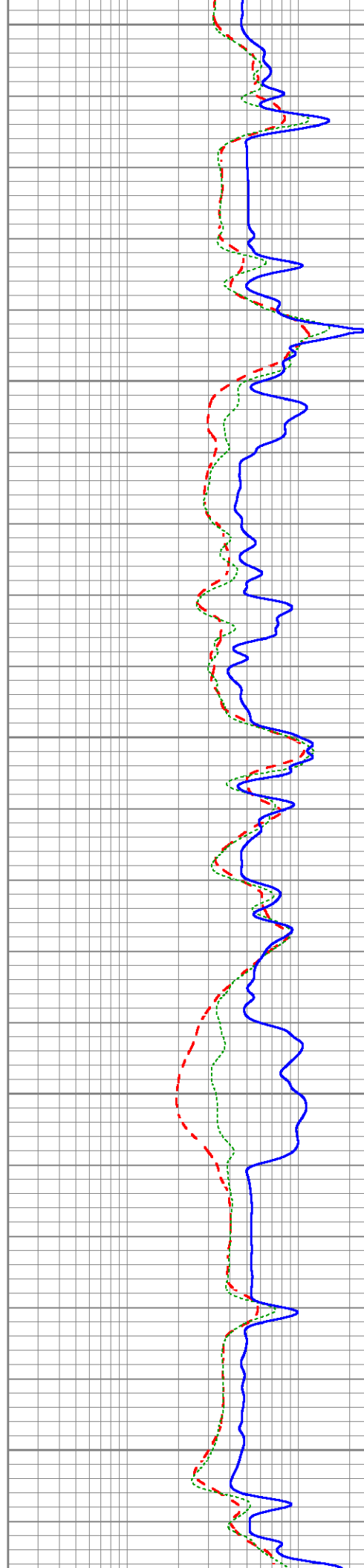
800

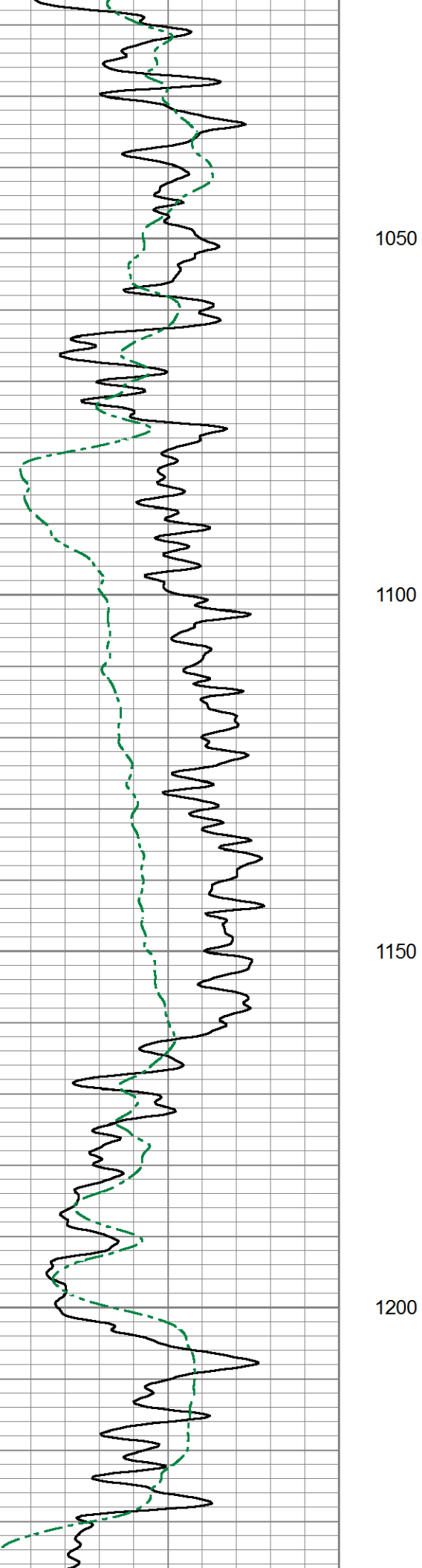
850

900

950

1000



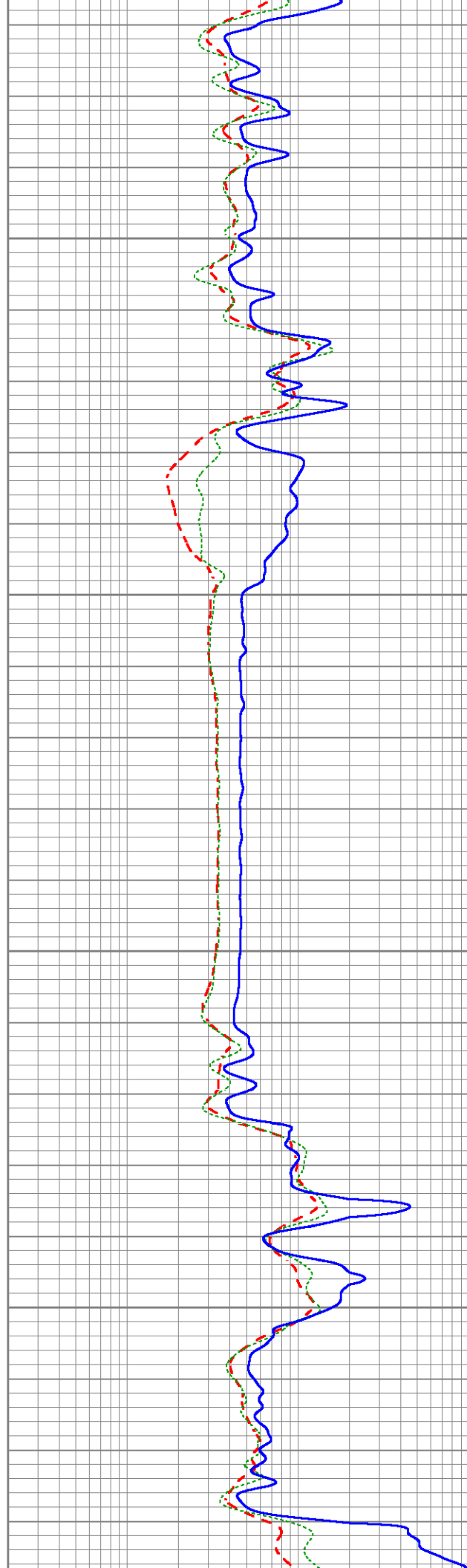


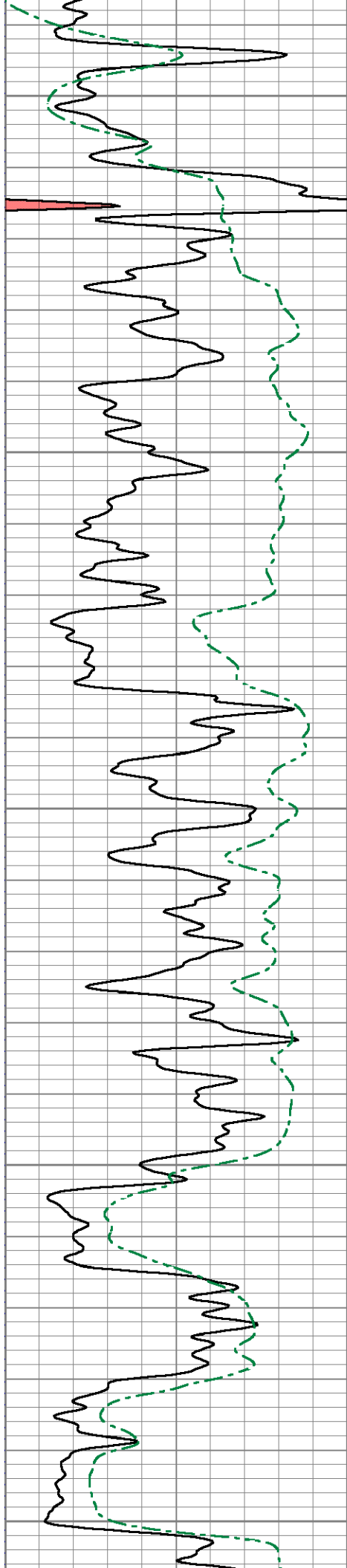
1050

1100

1150

1200





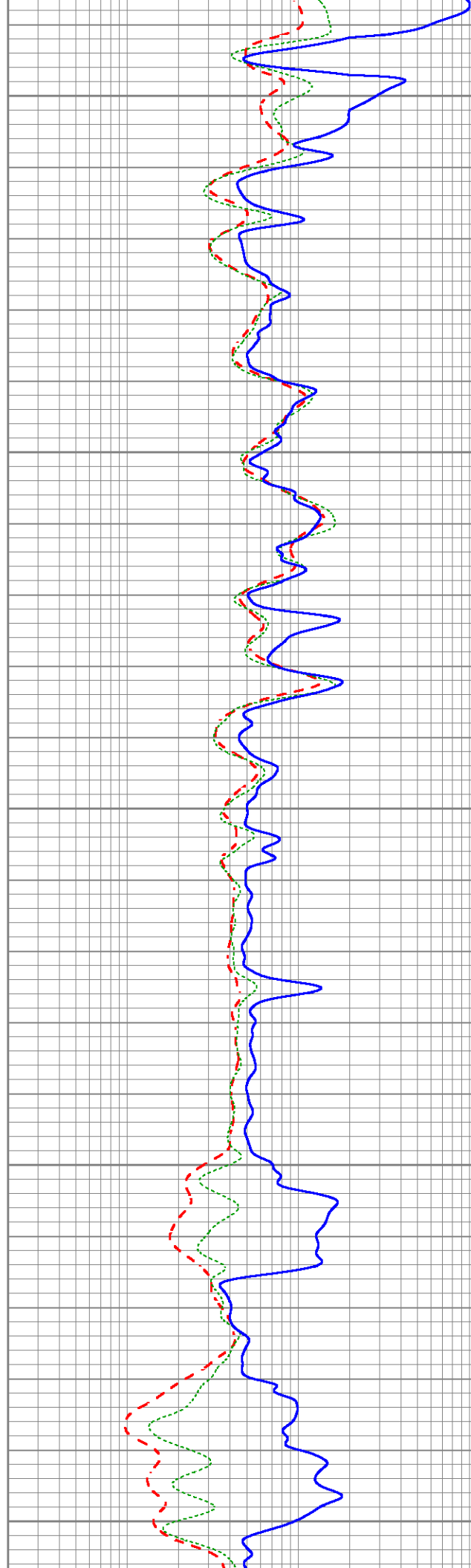
1250

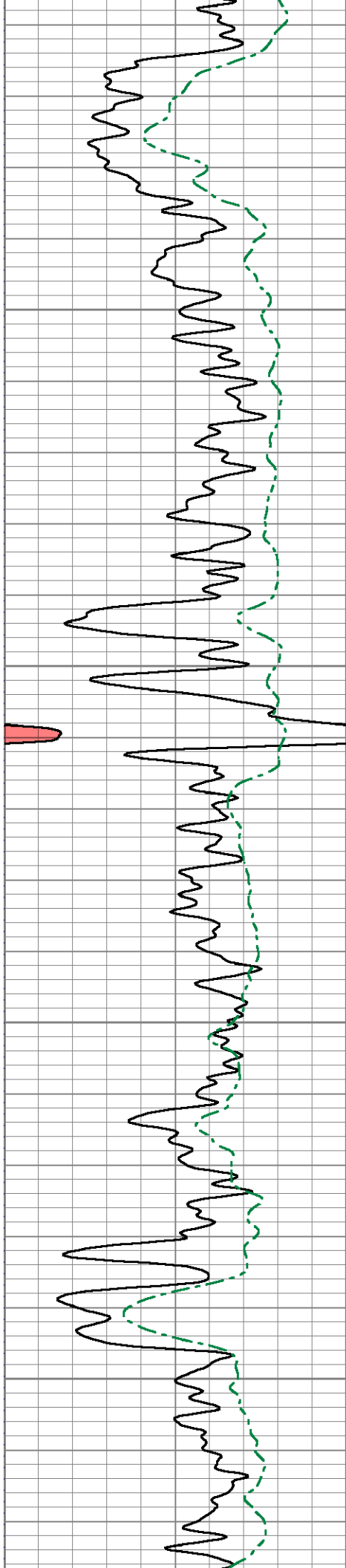
1300

1350

1400

1450



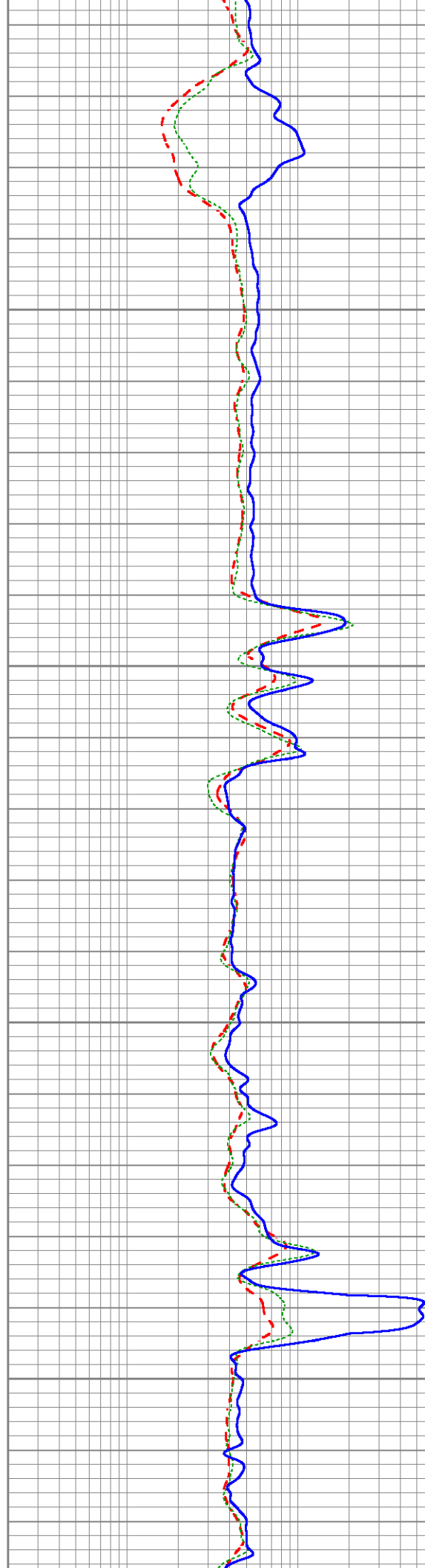


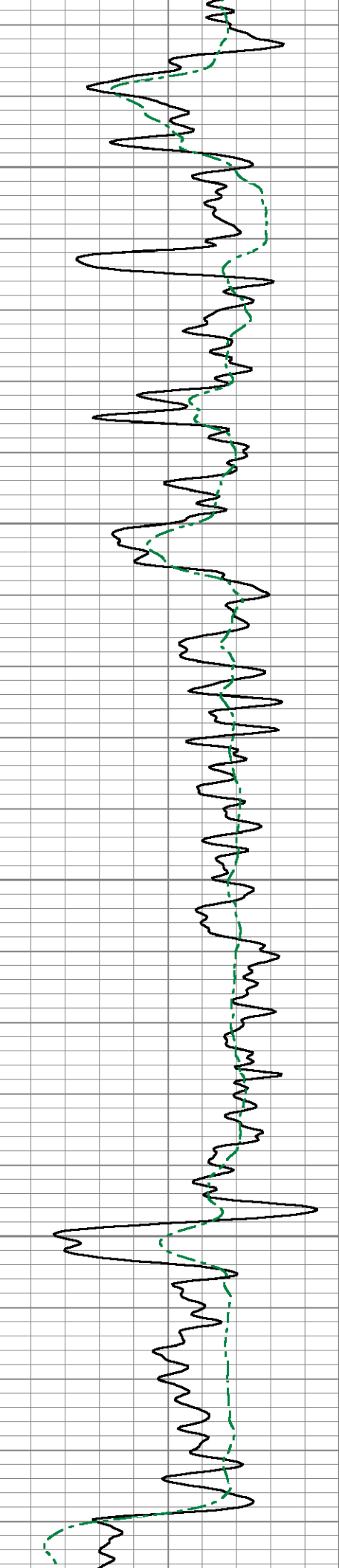
1500

1550

1600

1650



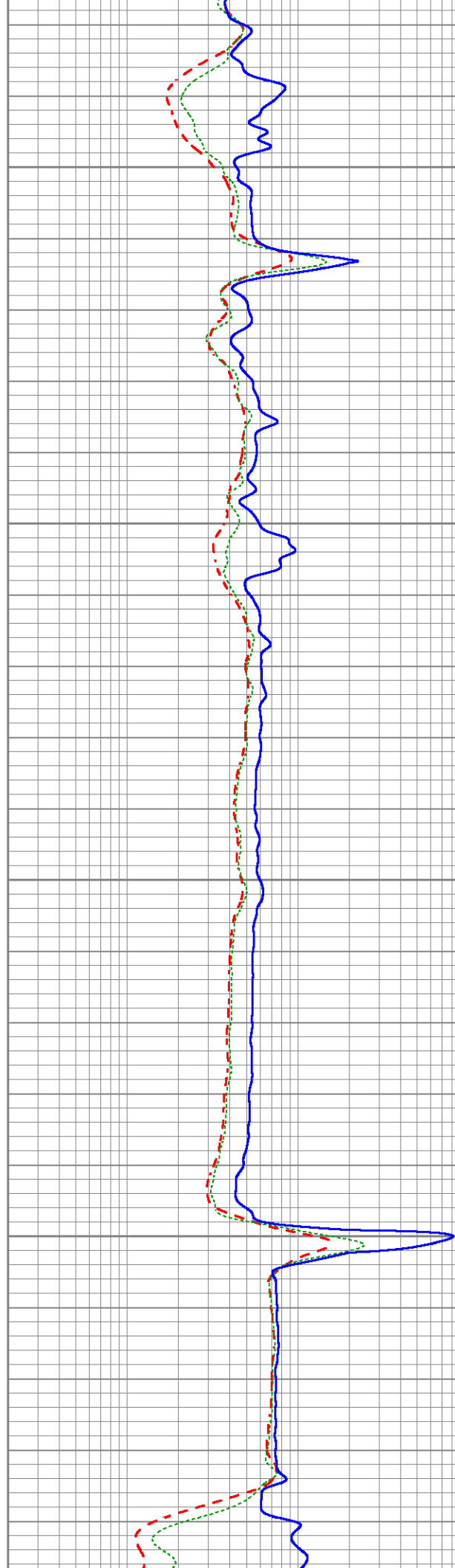


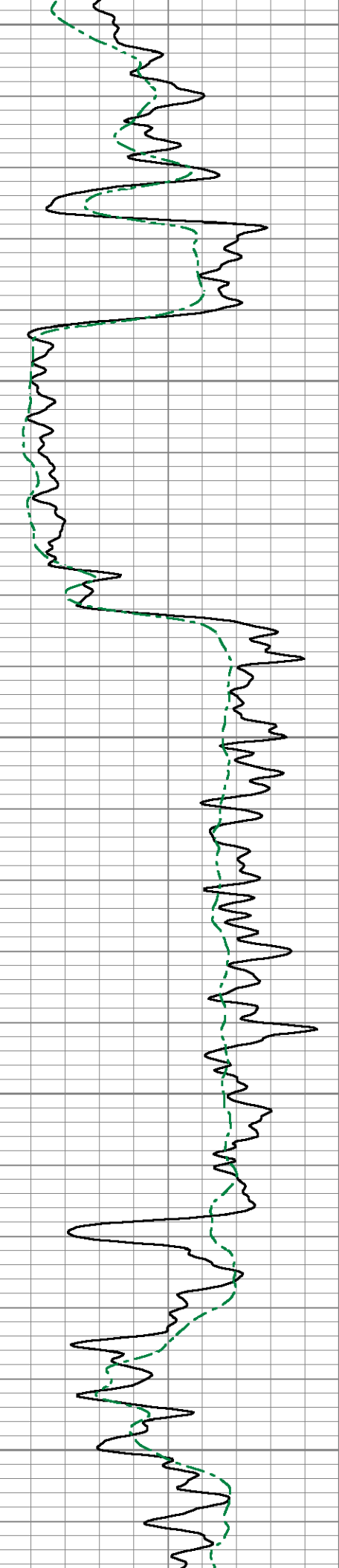
1700

1750

1800

1850





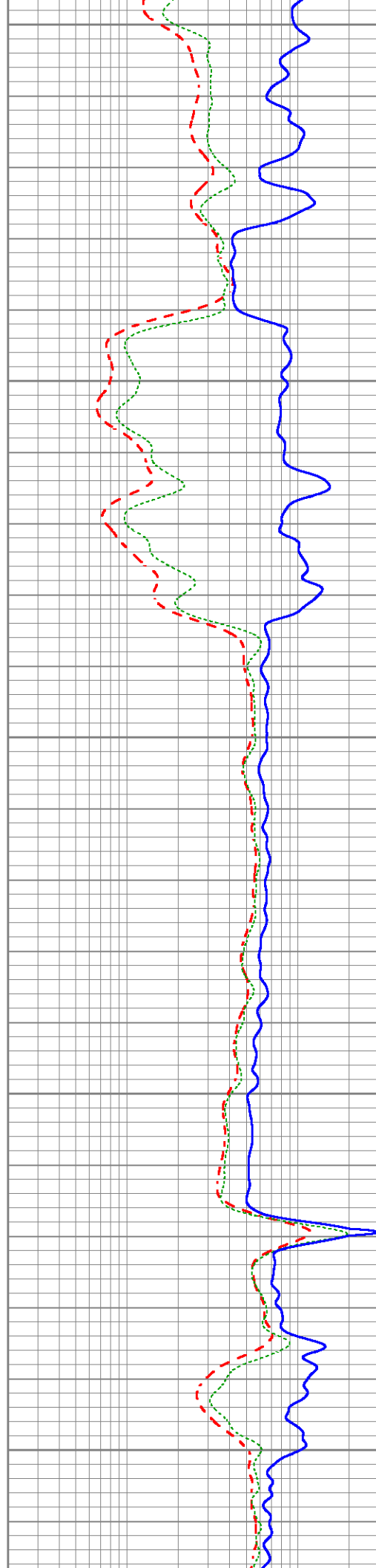
1900

1950

2000

2050

2100



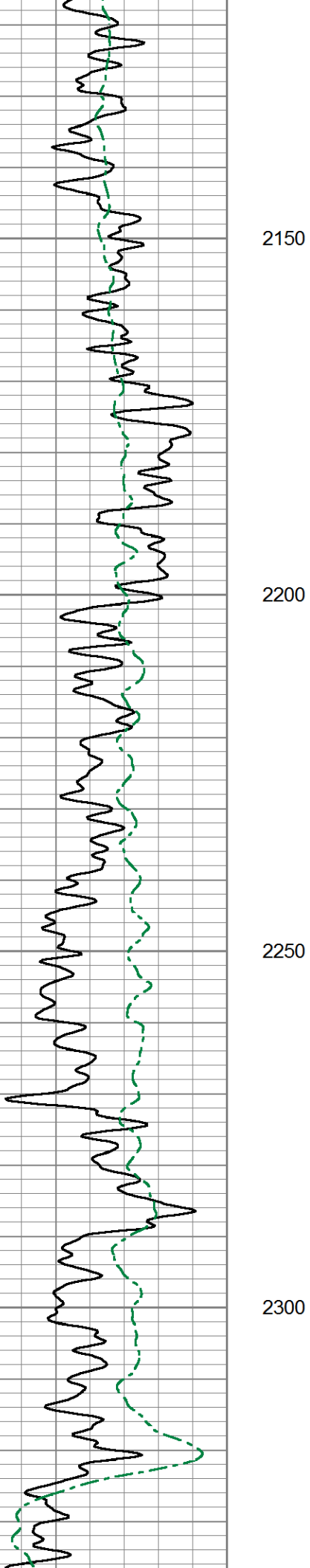
1900

1950

2000

2050

2100

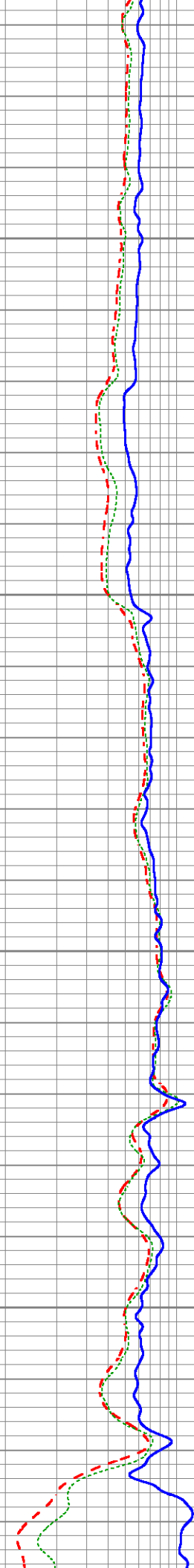


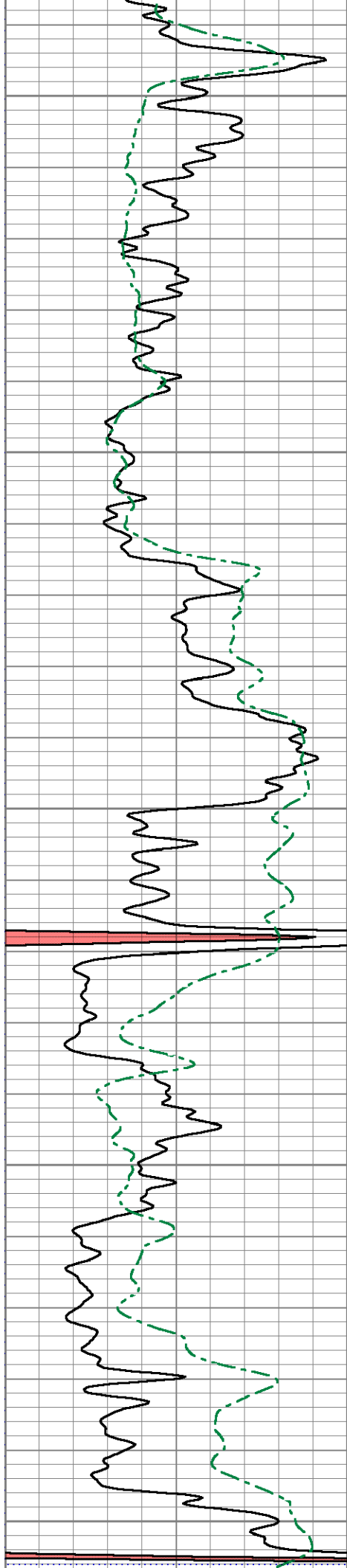
2150

2200

2250

2300





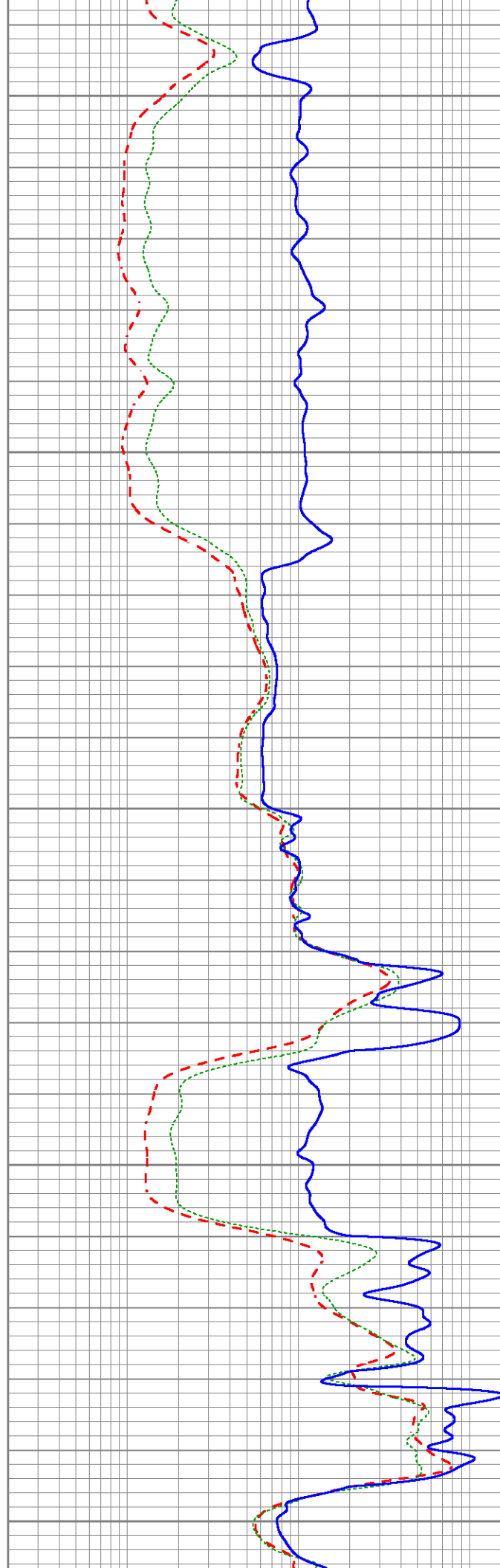
2350

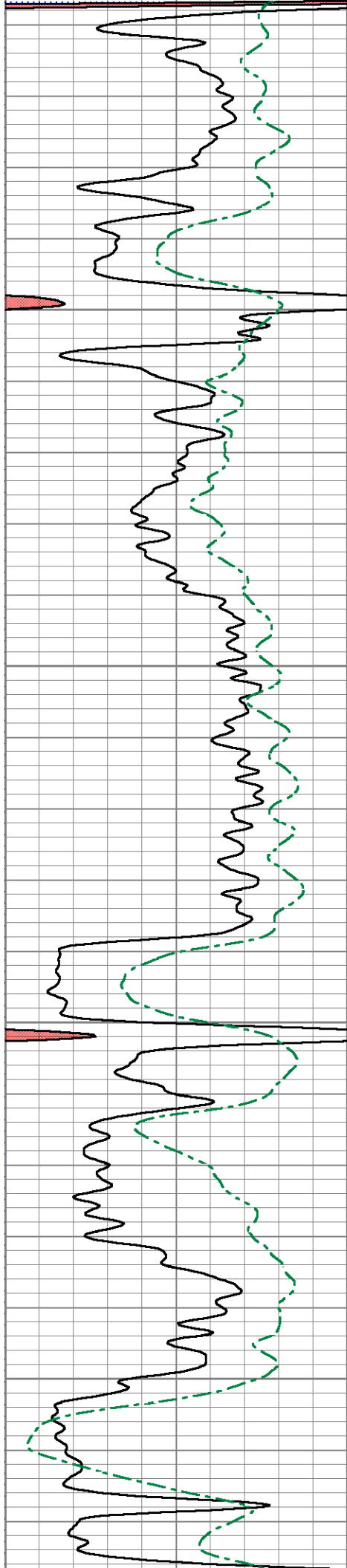
2400

2450

2500

2550



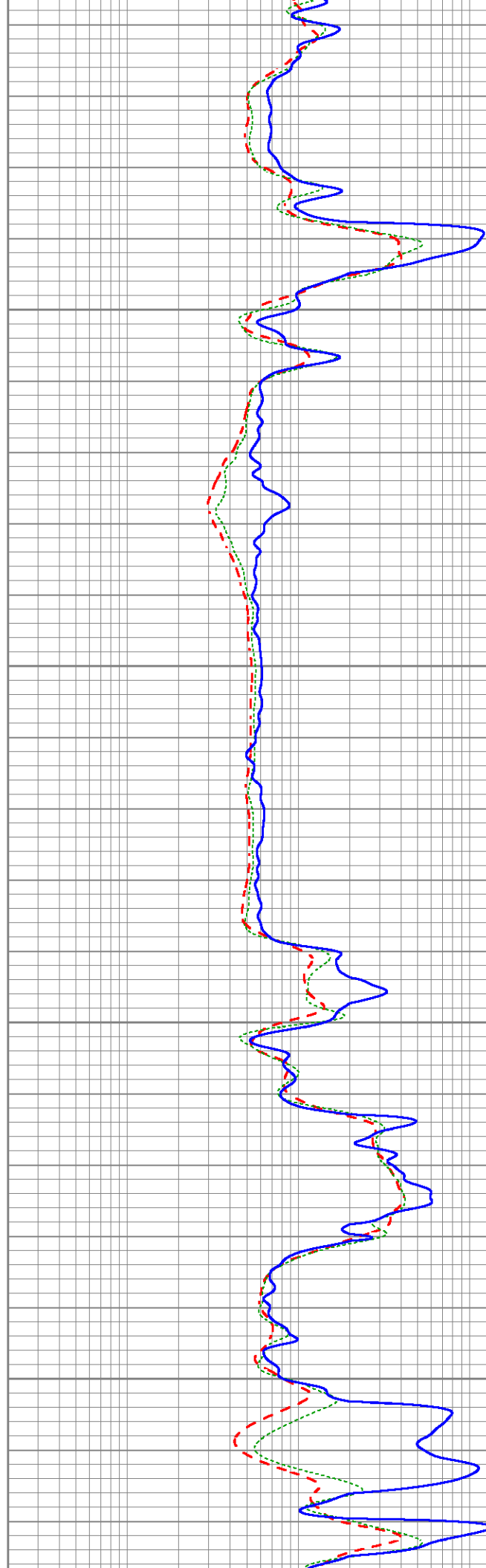


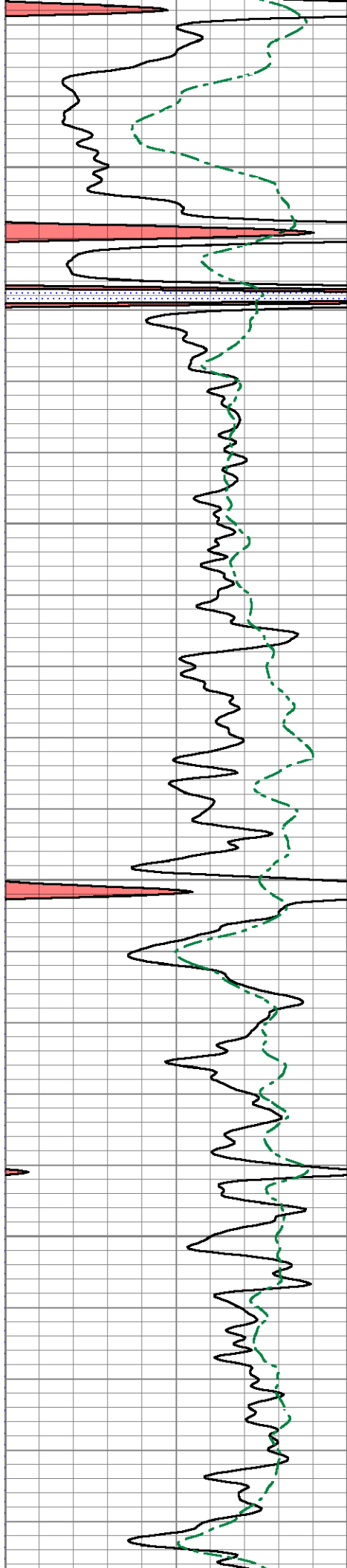
2600

2650

2700

2750



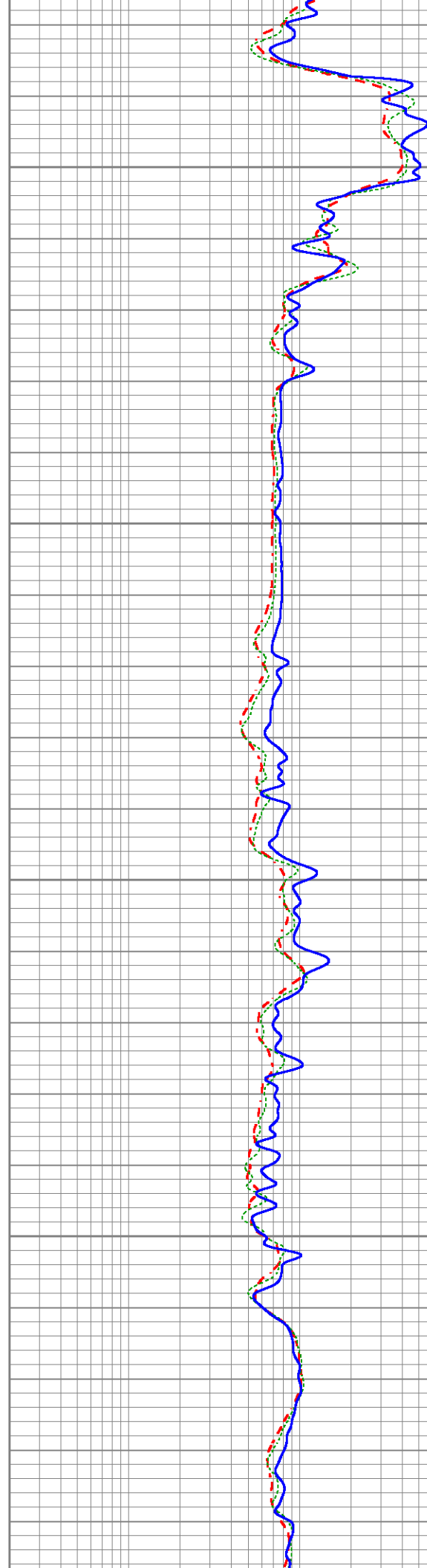


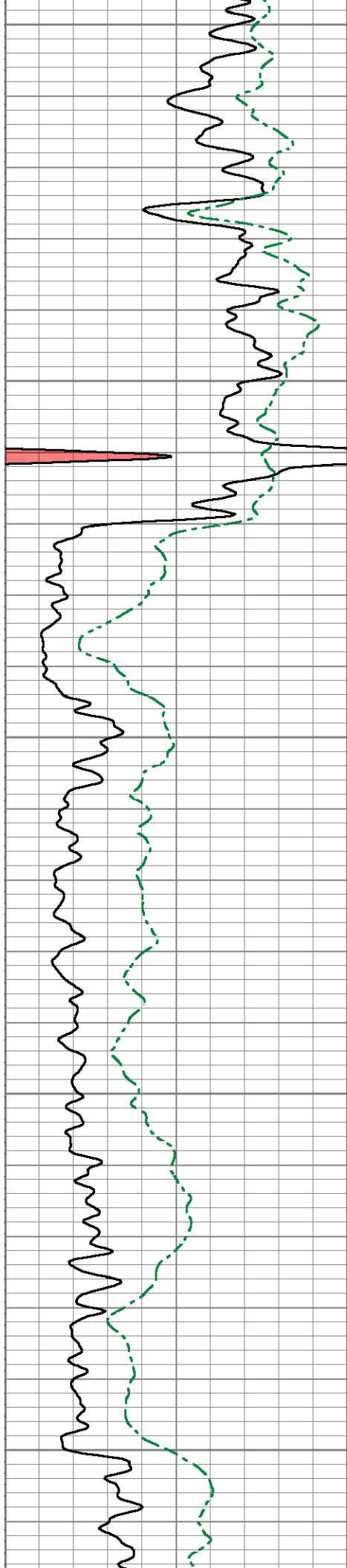
2800

2850

2900

2950





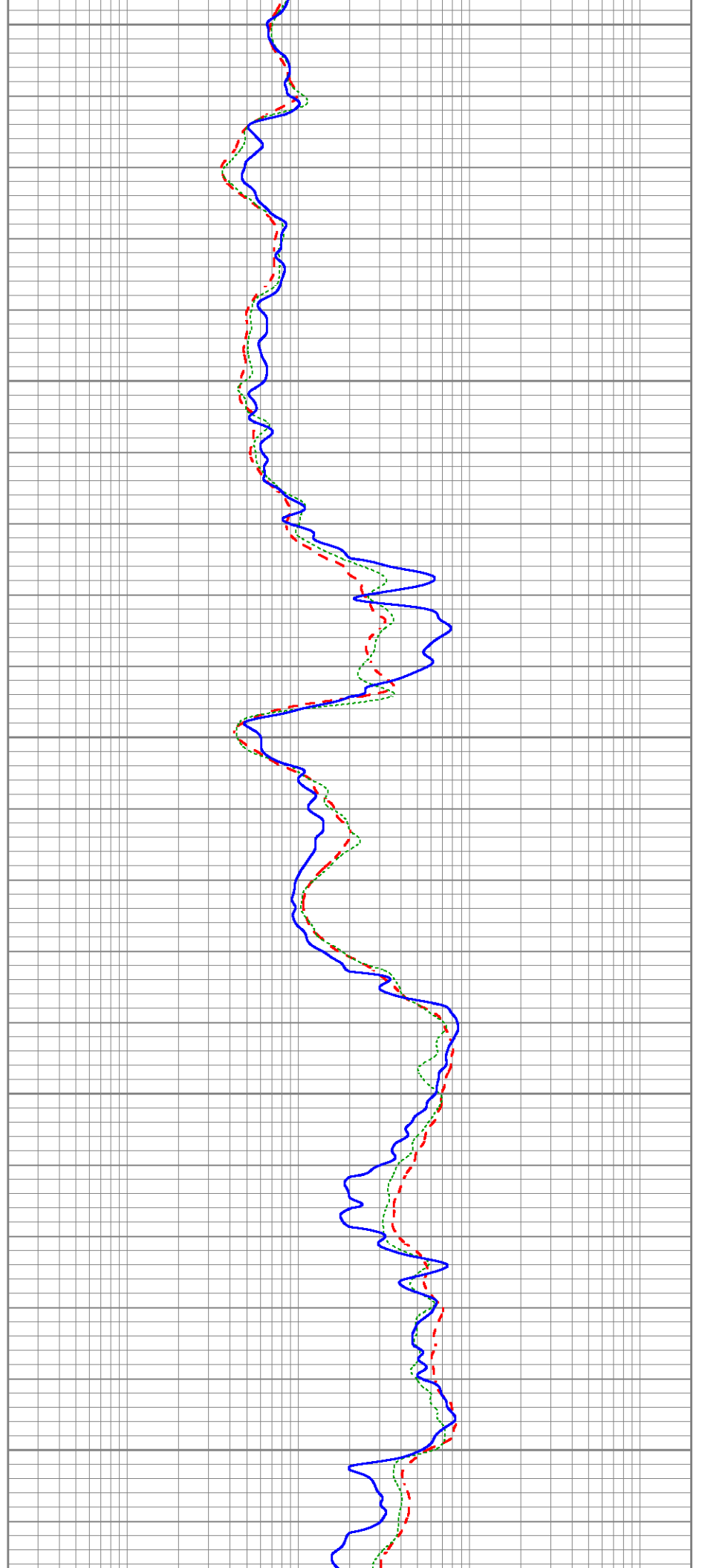
3000

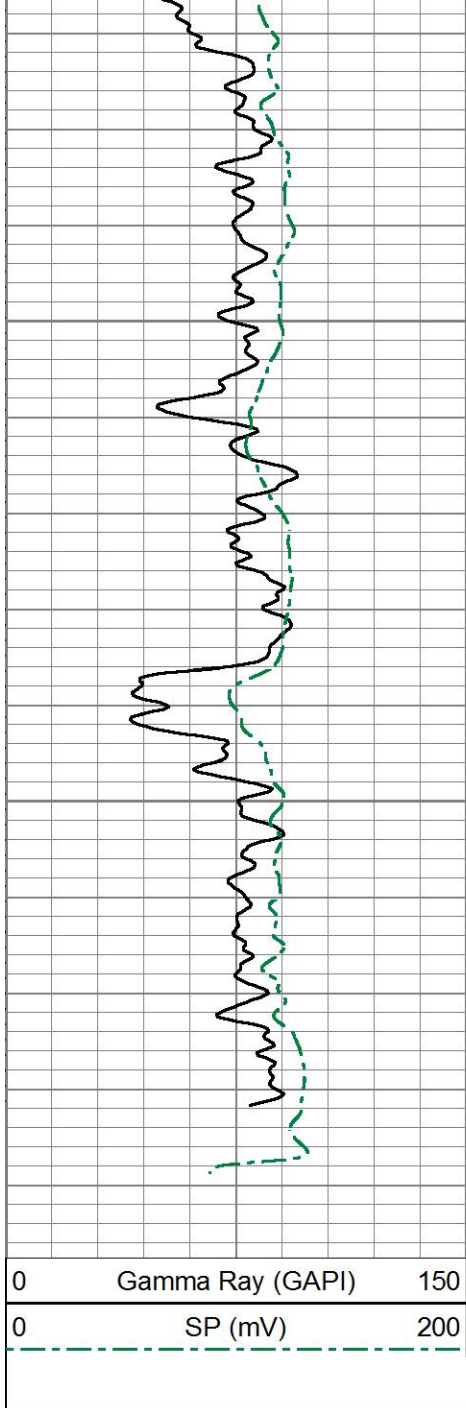
3050

3100

3150

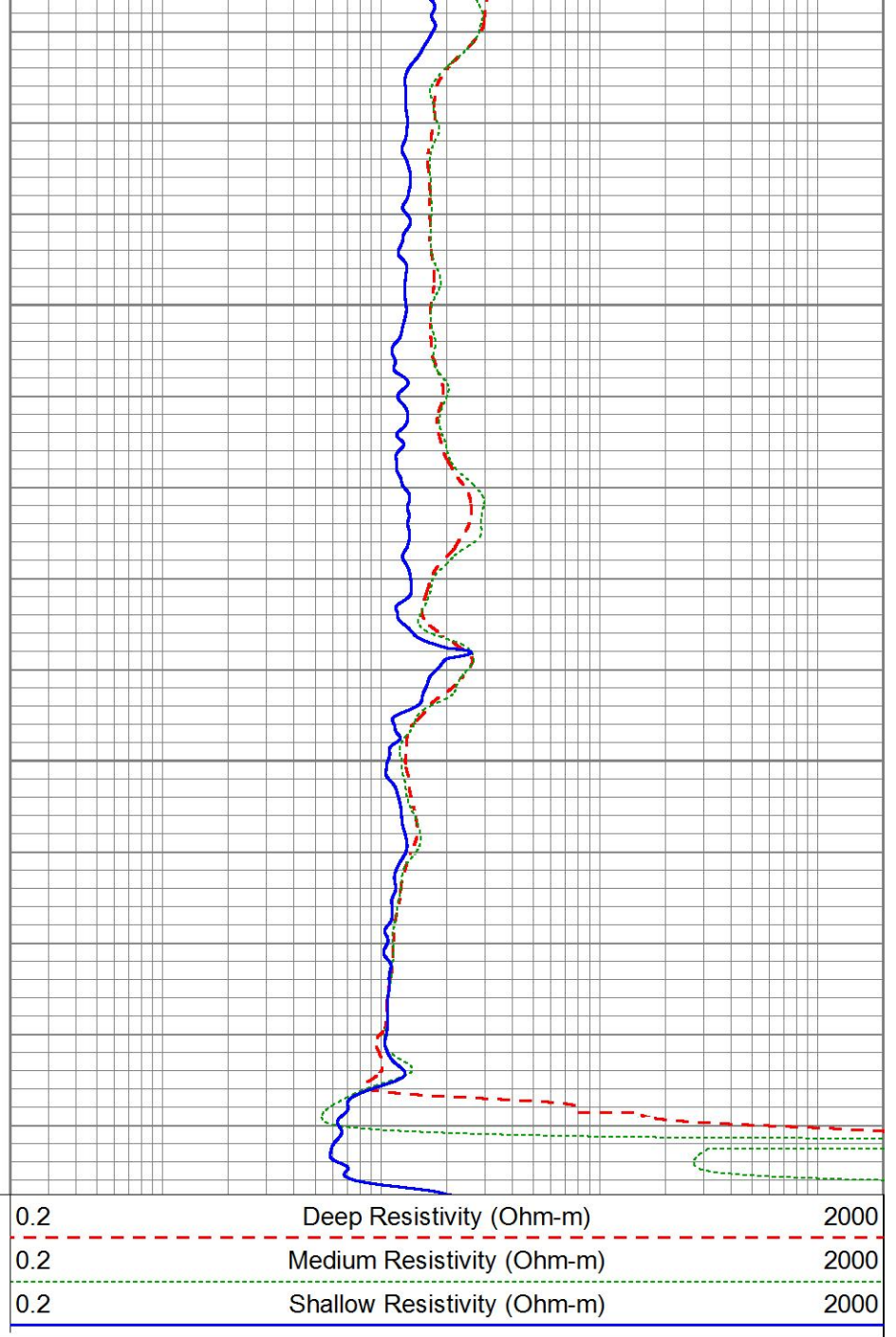
3200



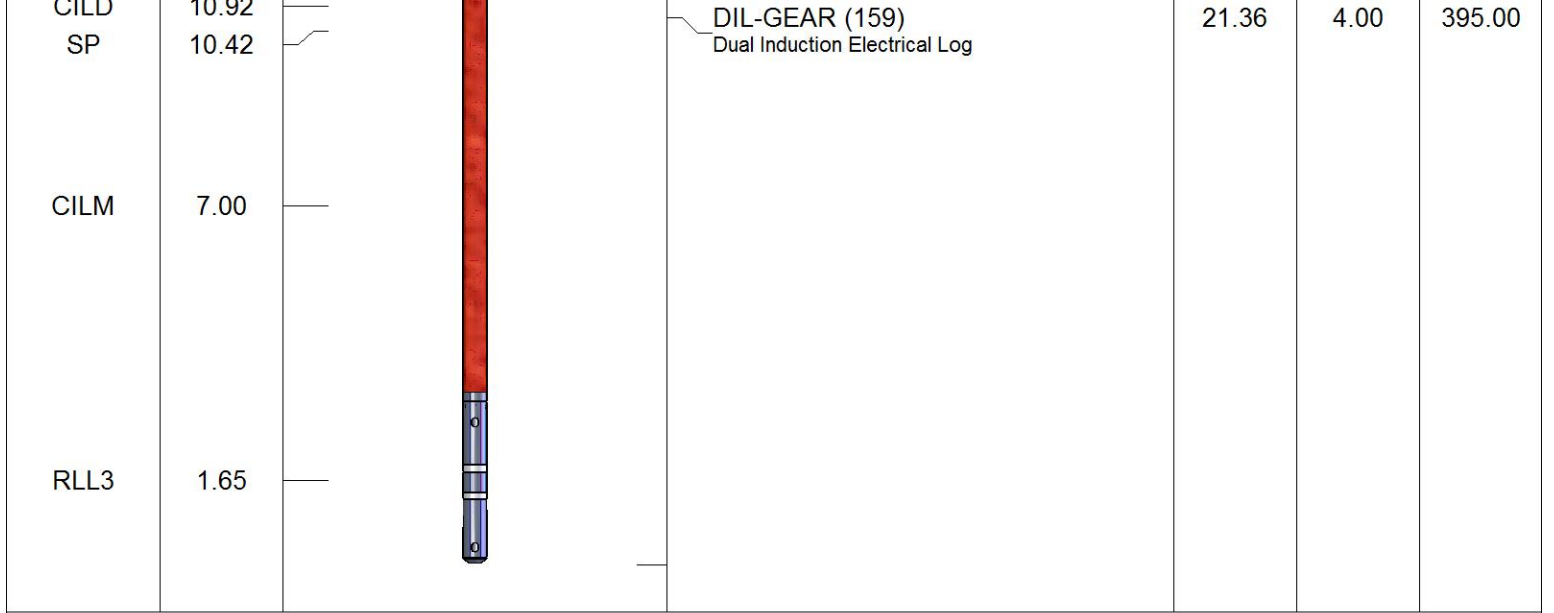


3250

3300



Sensor	Offset (ft)	Schematic	Description	Length (ft)	O.D. (in)	Weight (lb)
			Cable-CableHead Isulation Sub	1.42	3.00	20.00



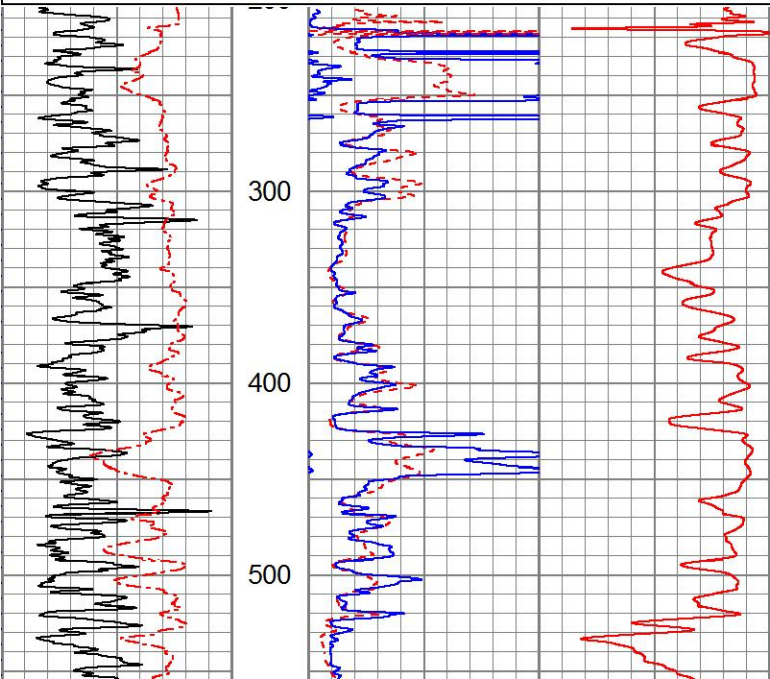
Dataset: ow2-8781 doube d.db: field/well/DIL/pass1
 Total length: 22.78 ft
 Total weight: 415.00 lb
 O.D.: 4.00 in

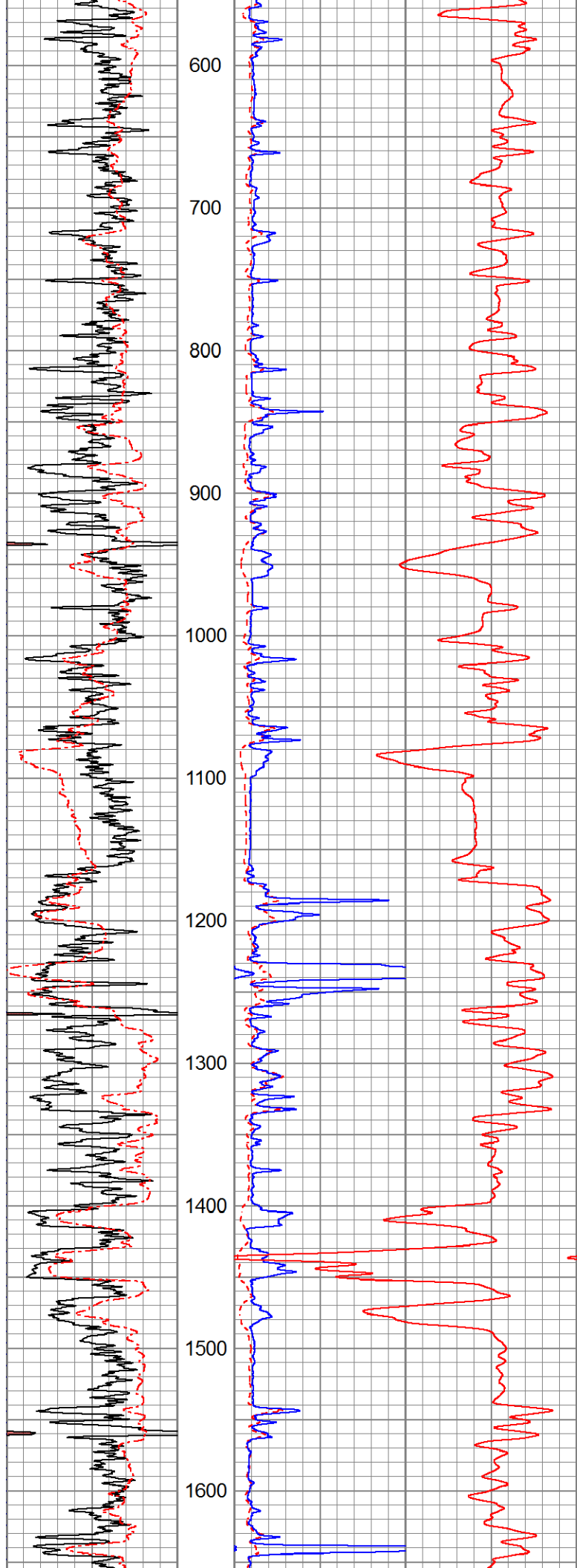


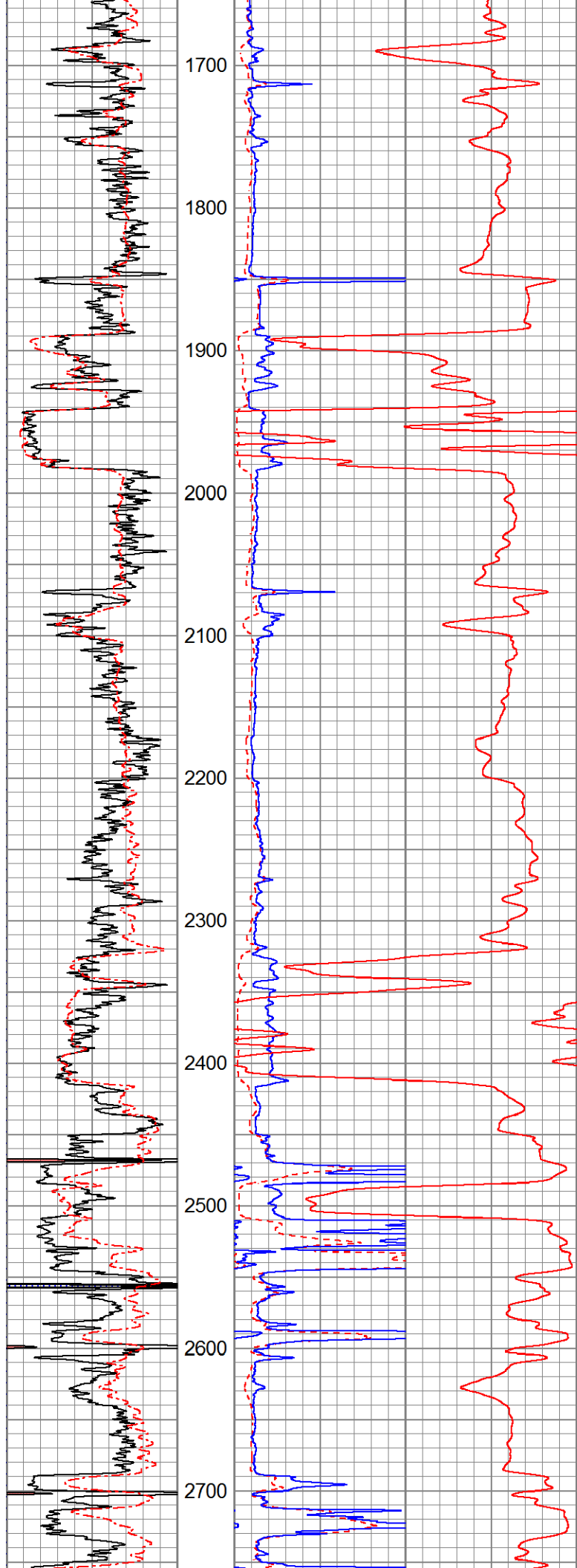
1" DIL SECTION

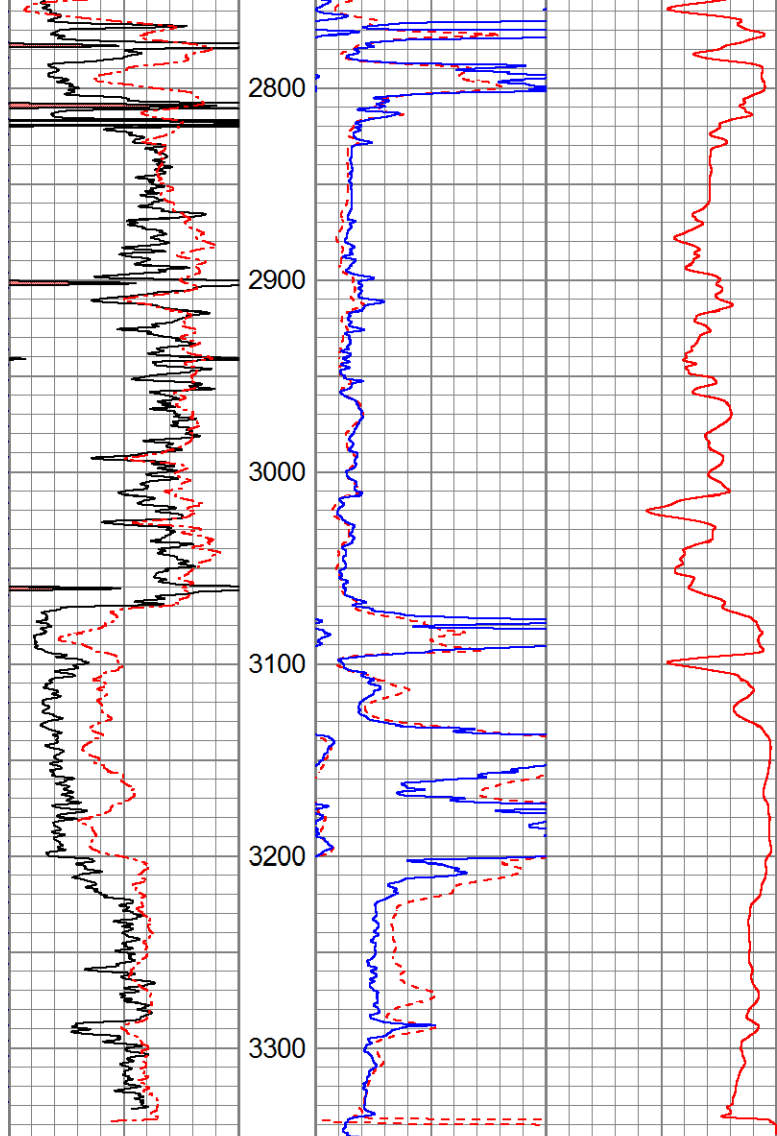
Database File: ow2-8781 doube d.db
 Dataset Pathname: DIL/pass1.2
 Presentation Format: dil1
 Dataset Creation: Thu Dec 11 21:29:32 2014
 Charted by: Depth in Feet scaled 1:1200

0	GR (GAPI) 150	1000	CILD (mmho/m)	0
0	SP (mV) 200	RILD 0 (Ohm-m) 50		
		RLL3 0 (Ohm-m) 50		









0	GR (GAPI)150	1000	CILD (mmho/m)	0
0	SP (mV) 200	RILD		
		0	(Ohm-m)	50
		RLL3		
		0	(Ohm-m)	50