



**COMPENSATED DENSITY
SIDEWALL NEUTRON LOG**

Company **DOUBLE "D" OIL COMPANY, INC.**
 Well **ANDES # 4 D & M**
 Field **MADDIX NORTH**
 County **COWLEY**
 State **KANSAS**

Company **DOUBLE "D" OIL COMPANY, INC.**
 Well **ANDES # 4 D & M**
 Field **MADDIX NORTH**
 County **COWLEY** State **KANSAS**

Location: API #: 15-035-24629-0000
 E/2 NW NE SE
 2310' FSL & 988' FEL
 SEC 1 TWP 33S RGE 5E
 Permanent Datum **GL** Elevation **1300'**
 Log Measured From **KB**
 Drilling Measured From **KB**

Other Services
DIL
 Elevation
 K.B. 1304'
 D.F. 1303'
 G.L. 1300'

Date	12-11-2014
Run Number	ONE
Depth Driller	3350'
Depth Logger	3350'
Bottom Logged Interval	3348'
Top Log Interval	SURFACE
Casing Driller	8 5/8" @ 211'
Casing Logger	8 5/8" @ 211'
Bit Size	7 7/8"
Type Fluid in Hole	CHEMICAL
Density / Viscosity	9.0 / 46
pH / Fluid Loss	9.0 / 8.4
Source of Sample	FLOWLINE
Rm @ Meas. Temp	2.0 @ 60
Rmf @ Meas. Temp	1.8 @ 60
Rmc @ Meas. Temp	2.4 @ 60
Source of Rmf / Rmc	CAL
Rm @ BHT	1.2 @ 112
Time Circulation Stopped	3:30 PM
Time Logger on Bottom	7:15 PM
Maximum Recorded Temperature	112
Equipment Number	OW2
Location	HOMINY, OK
Recorded By	LOWERY
Witnessed By	MR. BUTLER
	MR. OAST

<<< Fold Here >>>

All interpretations are opinions based on inferences from electrical or other measurements and we cannot and do not guarantee the accuracy or correctness of any interpretation, and we shall not, except in the case of gross or willful negligence on our part, be liable or responsible for any loss, costs, damages, or expenses incurred or sustained by anyone resulting from any interpretation made by any of our officers, agents or employees. These interpretations are also subject to our general terms and conditions set out in our current Price Schedule.

Comments

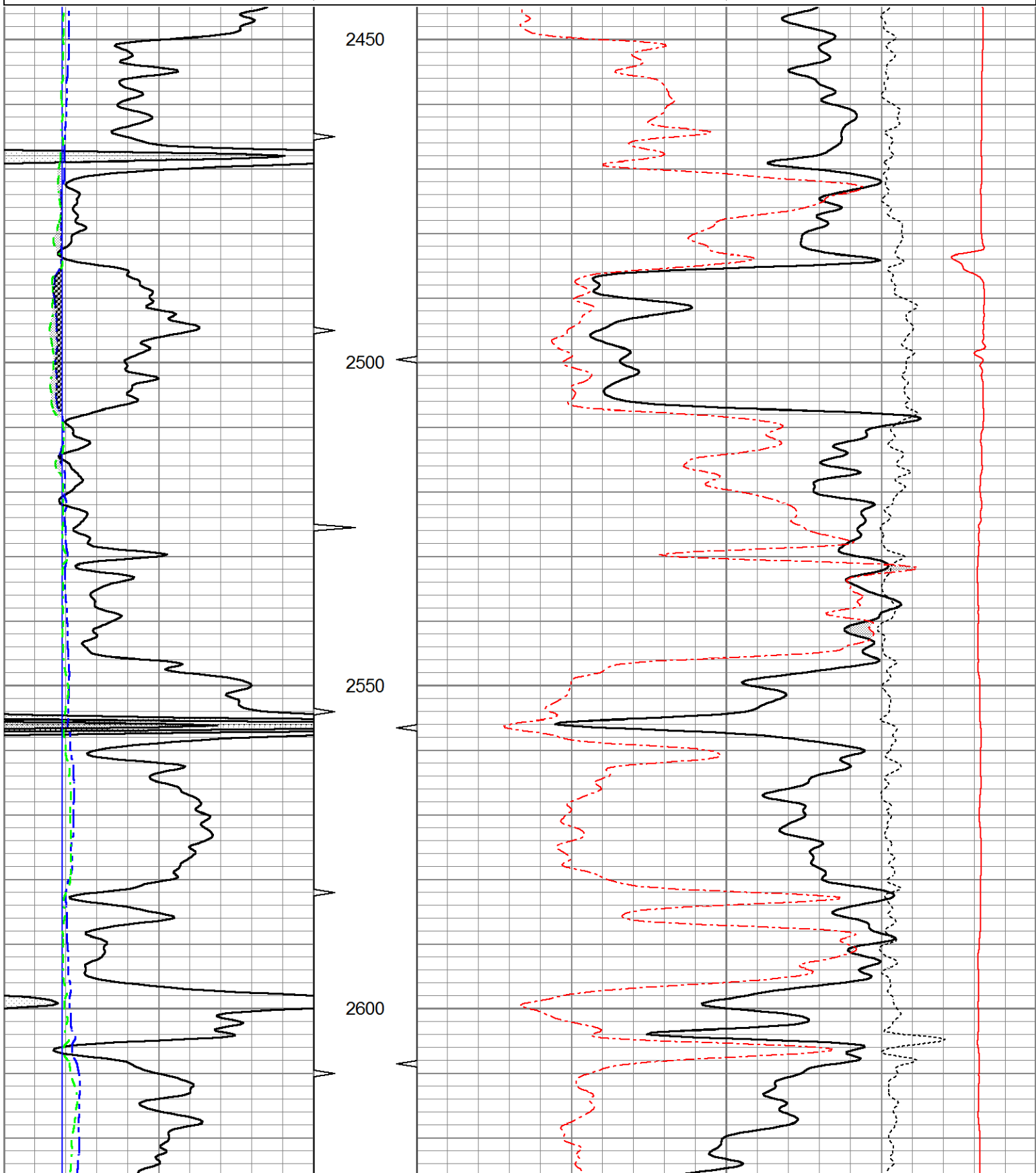
**OW2-8781
 MATRIX LIMESTONE 2.71 G/CC
 ABHV COMPUTED WITH 5 1/2" CASING
 CREW : SHAMBLES**

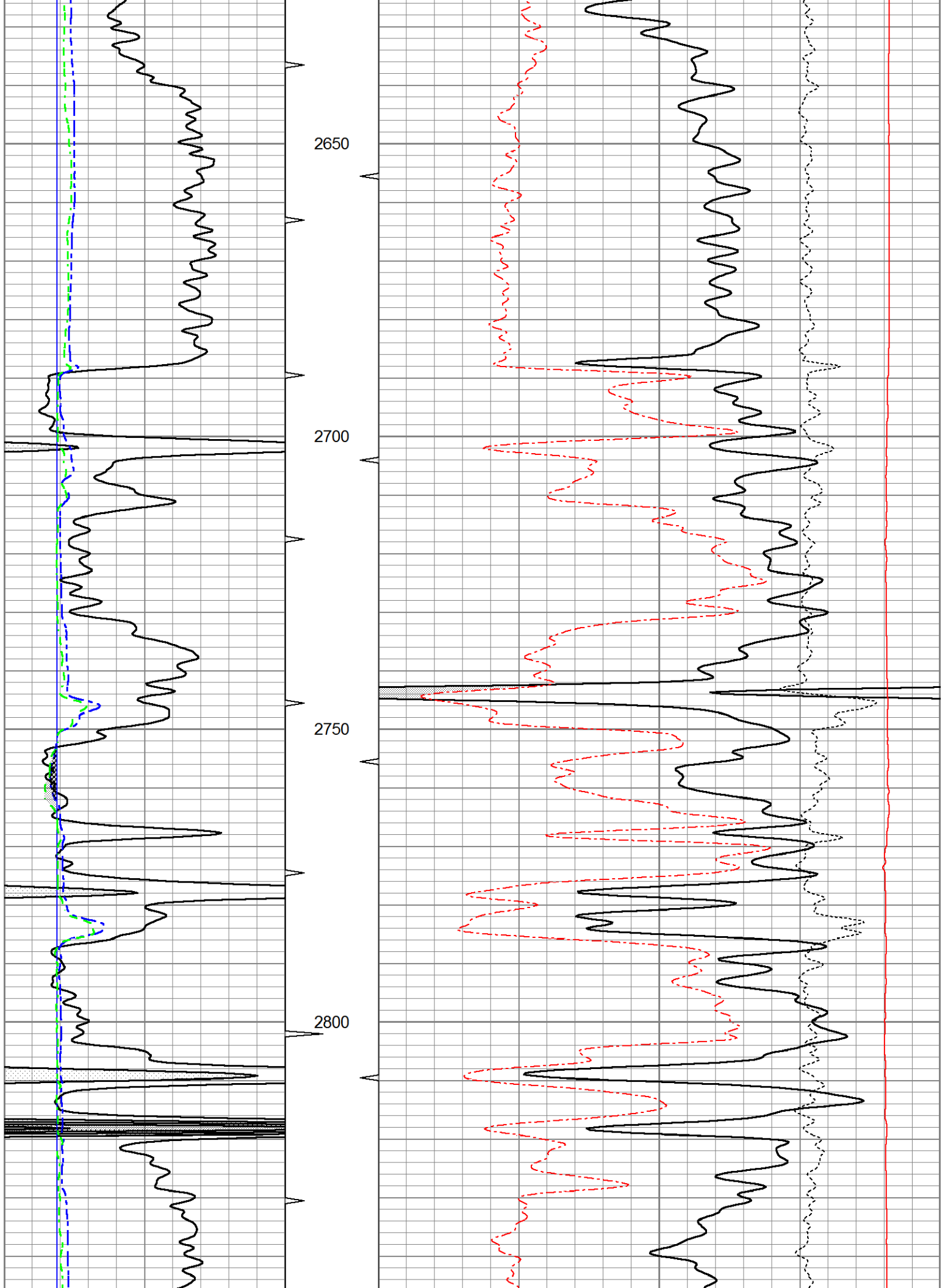


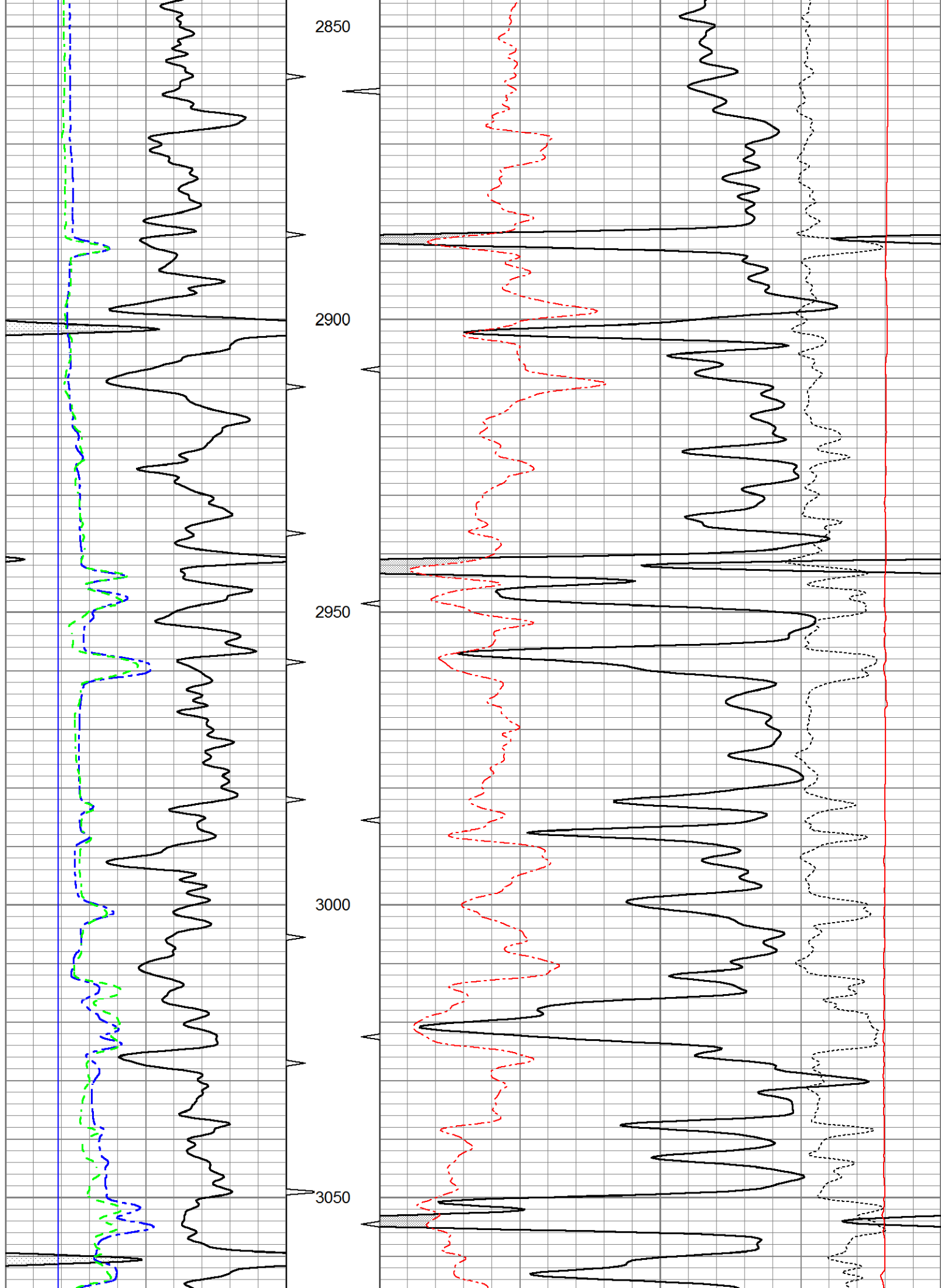
5" CDL/SWN SECTION

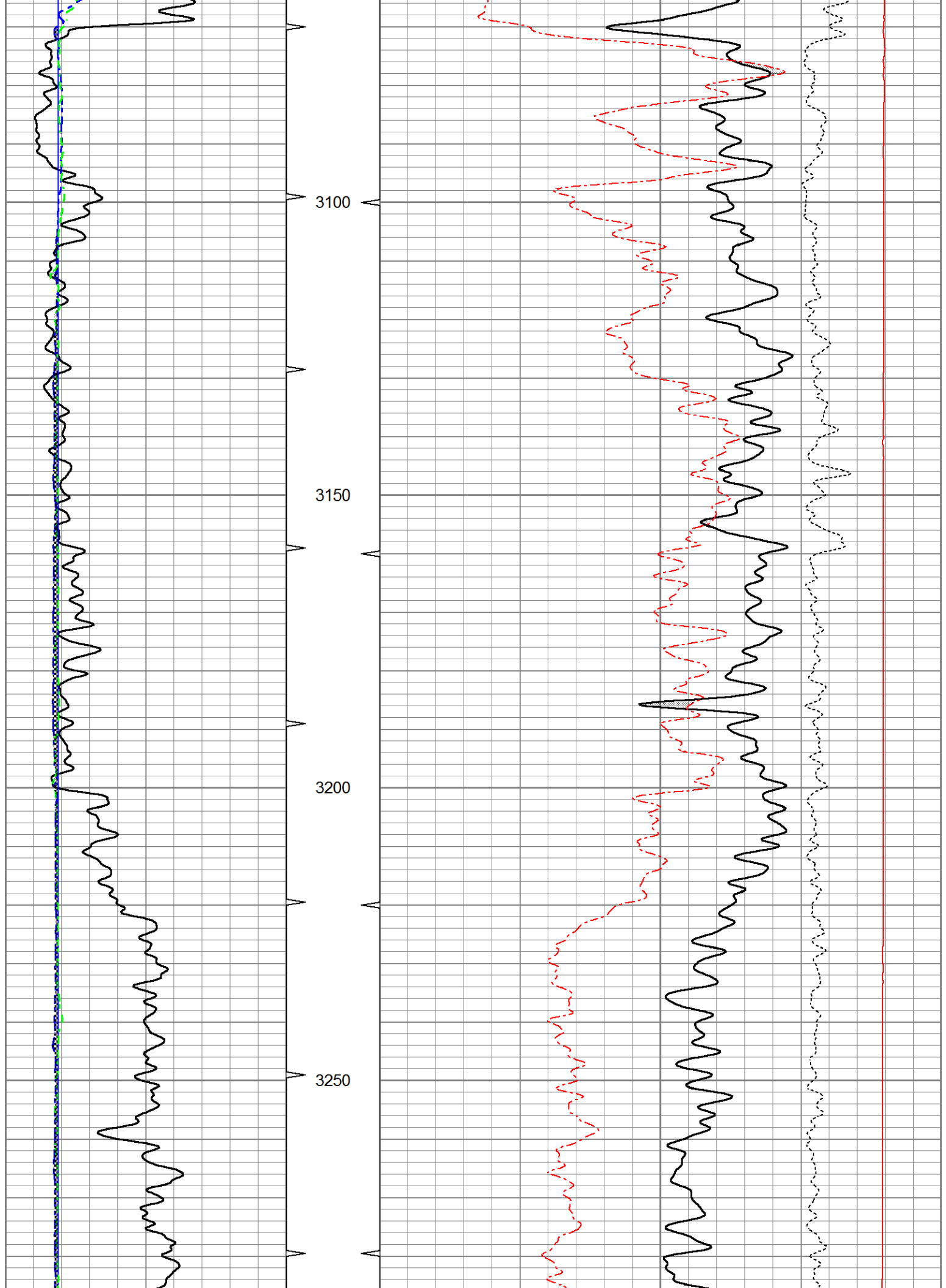
Database File ow2-8781 doube d.db
 Dataset Pathname CDL/pass3.5
 Presentation Format _neu6
 Dataset Creation Thu Dec 11 20:17:18 2014
 Charted by Depth in Feet scaled 1:240

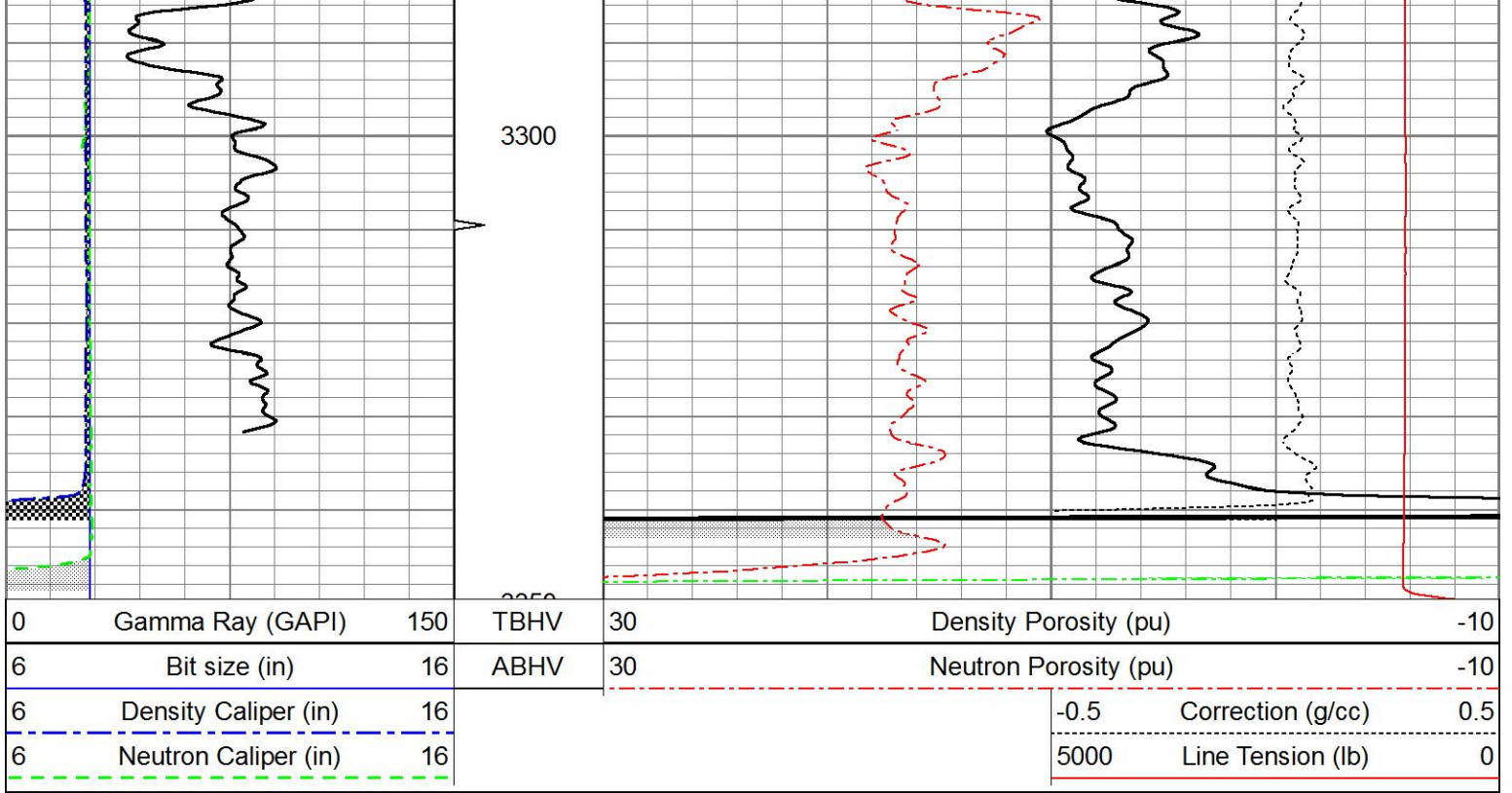
0	Gamma Ray (GAPI)	150	TBHV	30	Density Porosity (pu)	-10
6	Bit size (in)	16	ABHV	30	Neutron Porosity (pu)	-10
6	Density Caliper (in)	16			-0.5	Correction (g/cc) 0.5
6	Neutron Caliper (in)	16			5000	Line Tension (lb) 0







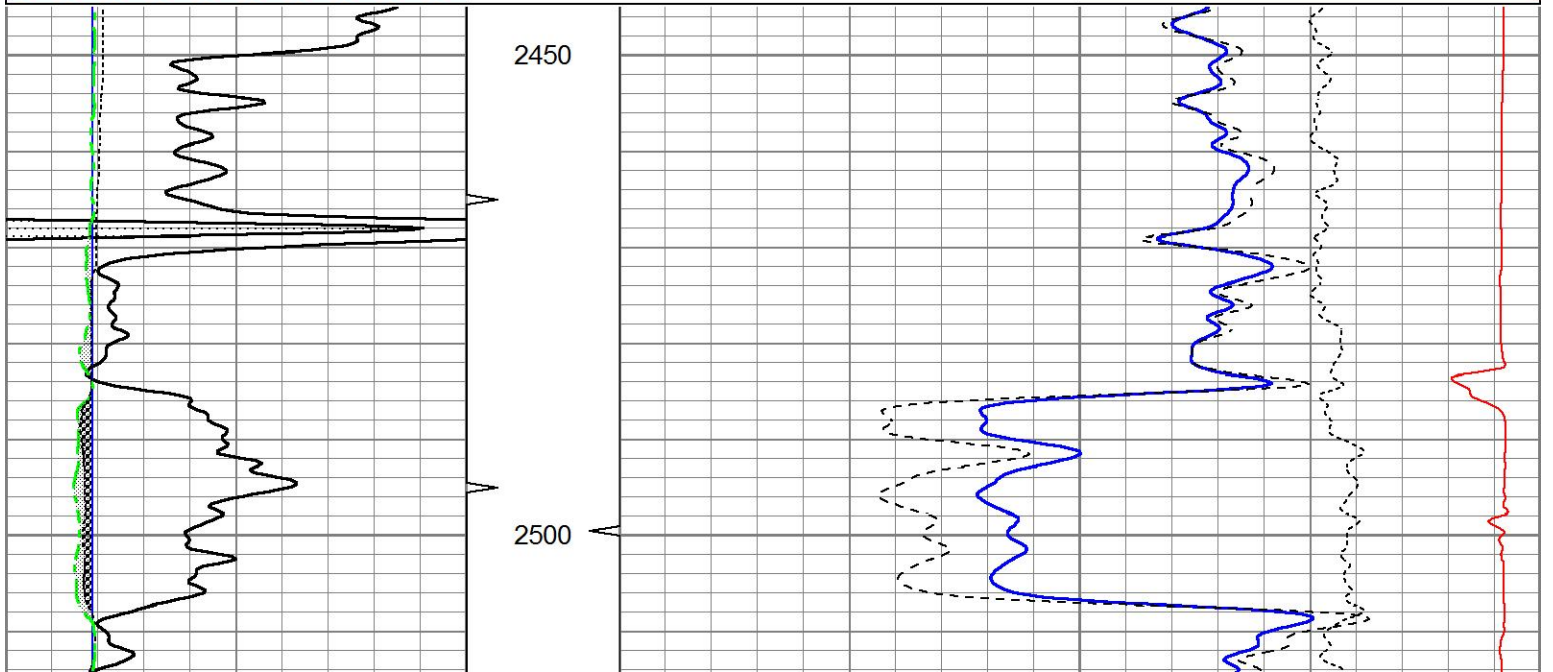


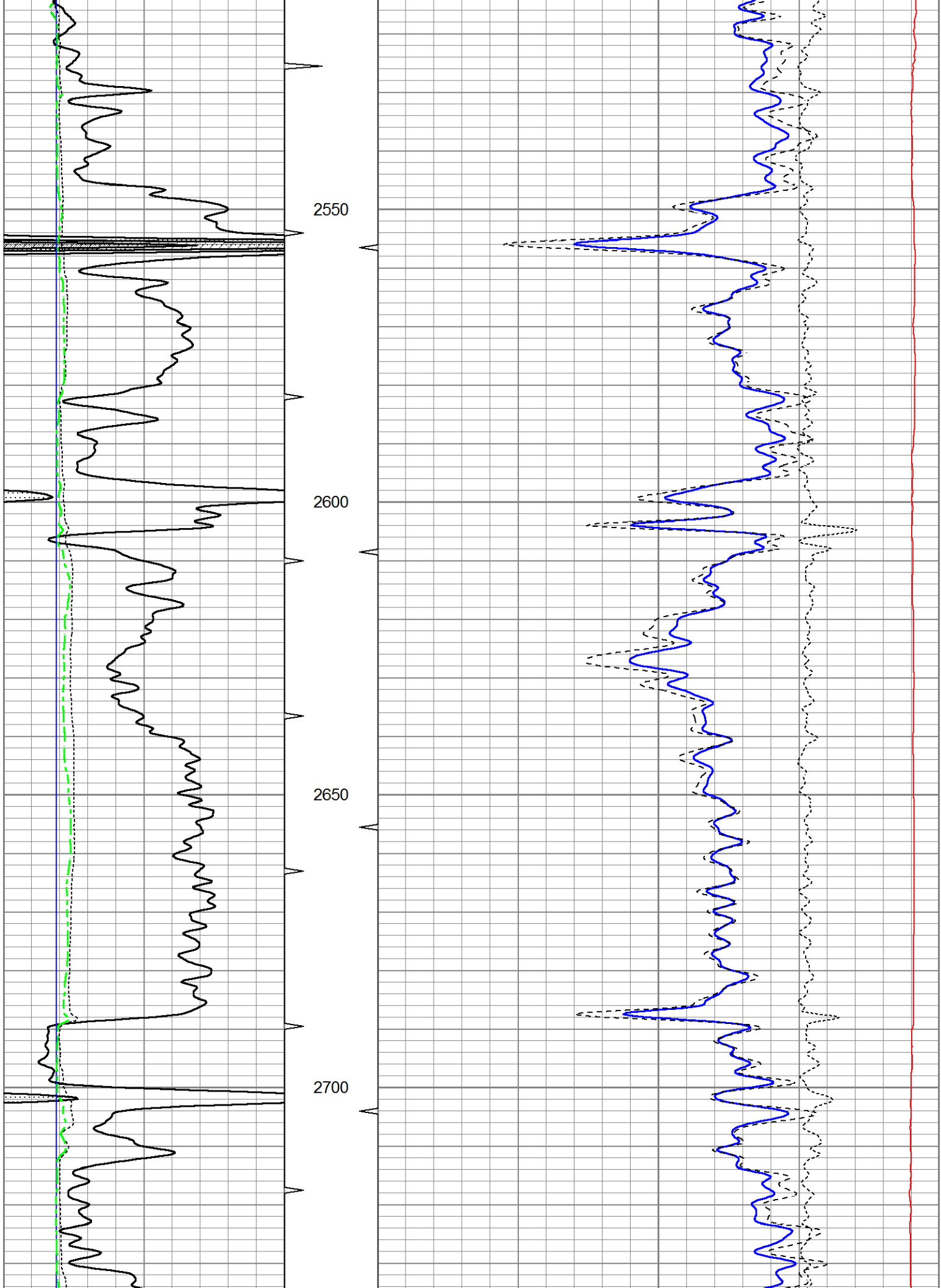


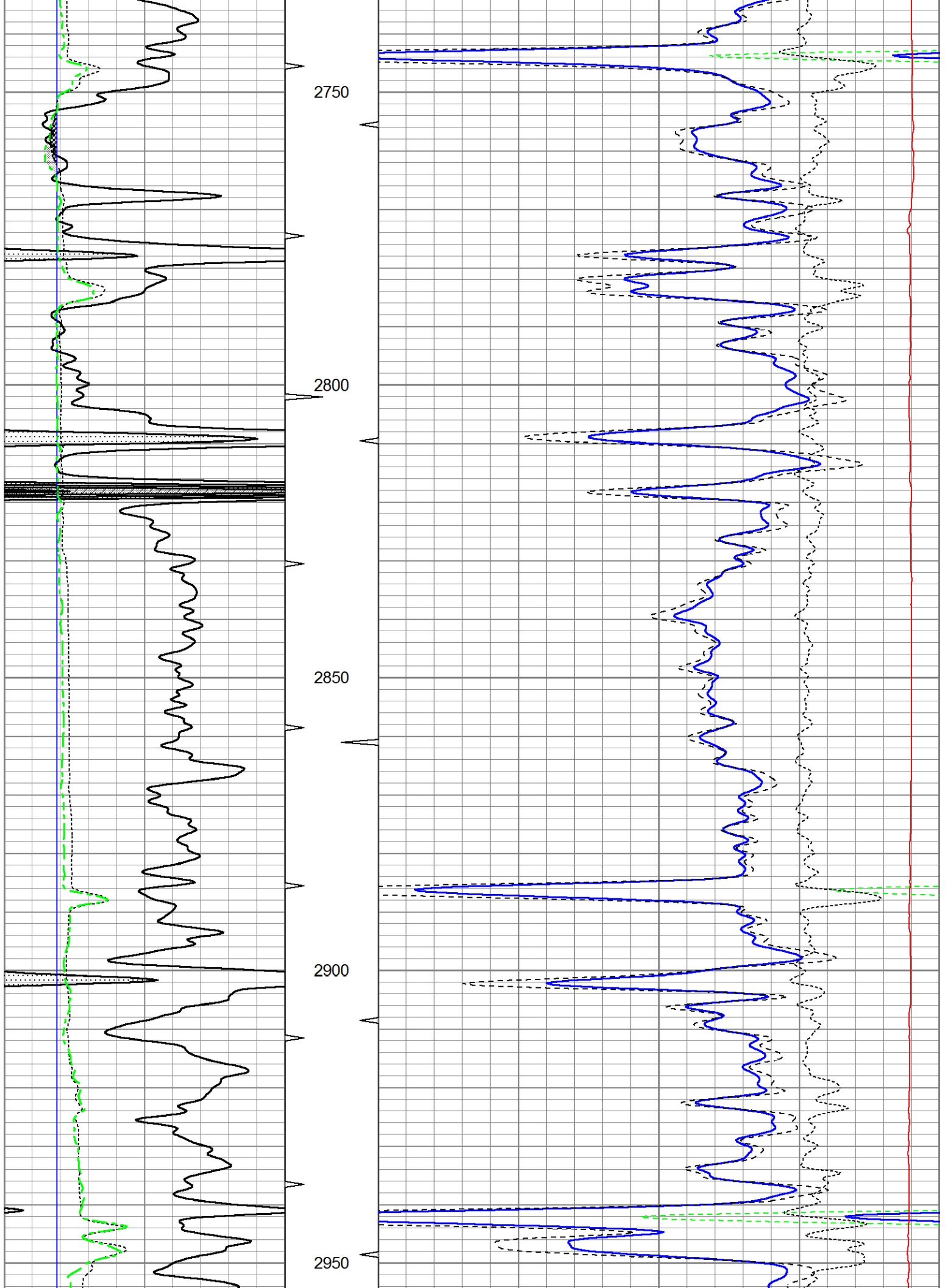
5" CDL SECTION

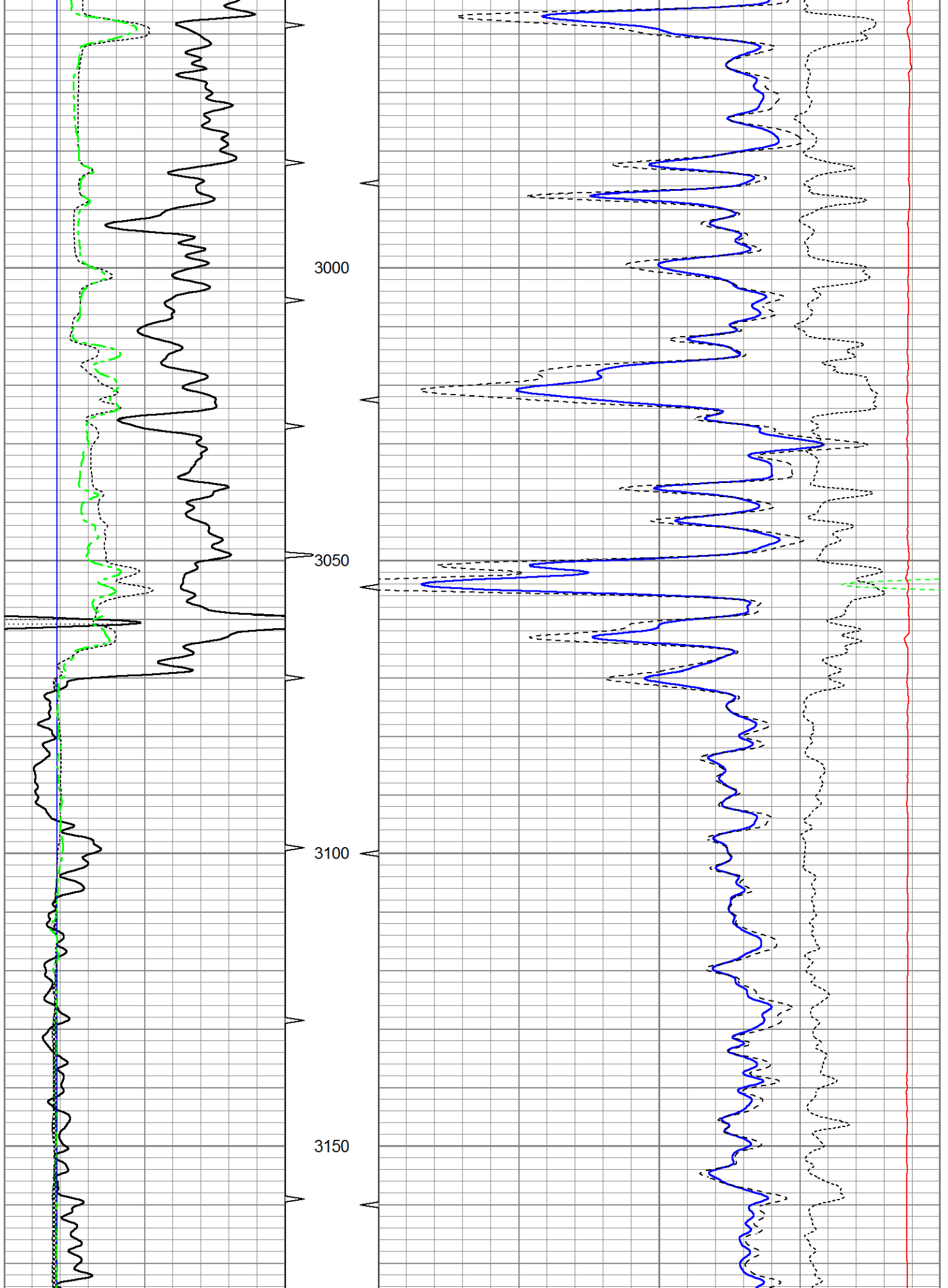
Database File ow2-8781 doube d.db
 Dataset Pathname CDL/pass3.4
 Presentation Format bulk6
 Dataset Creation Thu Dec 11 20:17:02 2014
 Charted by Depth in Feet scaled 1:240

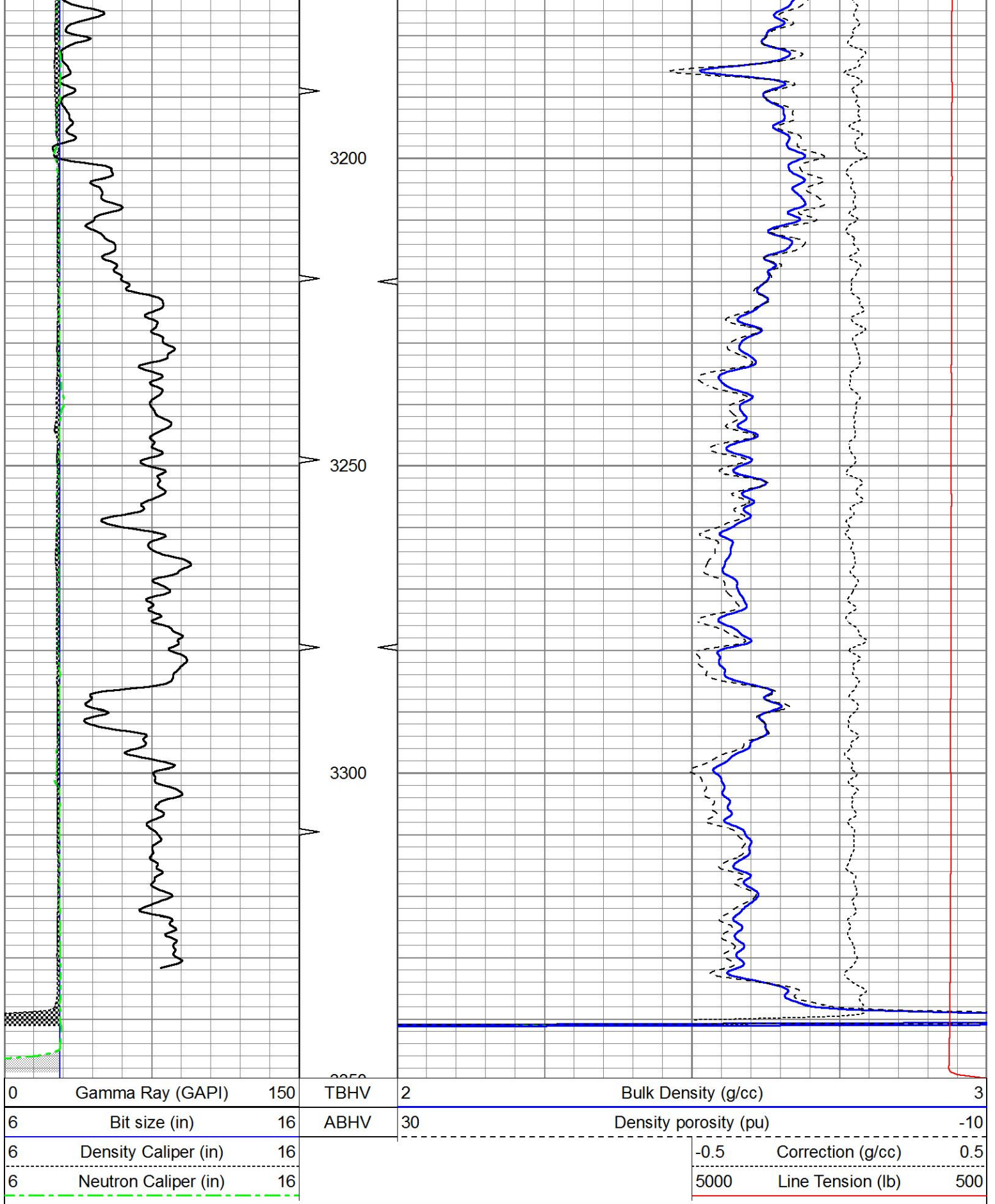
0	Gamma Ray (GAPI)	150	TBHV	2	Bulk Density (g/cc)	3
6	Bit size (in)	16	ABHV	30	Density porosity (pu)	-10
6	Density Caliper (in)	16			-0.5	Correction (g/cc) 0.5
6	Neutron Caliper (in)	16			5000	Line Tension (lb) 500

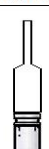










Sensor	Offset (ft)	Schematic	Description	Length (ft)	O.D. (in)	Weight (lb)
			Cable-CableHead Isulation Sub	1.42	3.00	20.00

GR	15.60		Gamma-Oilex2122 (2122) Gamma Ray Section	2.83	3.50	75.00
LSD	10.22		Density-Oilex2122 (2122) Density Section	6.08	4.00	250.00
DCAL	9.94					
SSD	9.76					
SCAL	2.54		Neutron-Sidewall3015 (3015) Sidewall Neutron Section	7.81	4.00	150.00
SWN	2.15					
NEU	2.15					

Dataset: ow2-8781 doube d.db: field/well/CDL/pass3
 Total length: 18.15 ft
 Total weight: 495.00 lb
 O.D.: 4.00 in