



MIDWEST SURVEYS
 LOGGING - PERFORATING - CONSULTING SERVICES
 P.O. Box 88, Osawatomie, KS 66064
 P.O. Box 88, Osawatomie, KS 66064

GAMMA RAY / NEUTRON / CCL

File No: **Company Trimble & MacLuskey Oil, LLC**
Well Martindell No. 1-31
Field Thrall - Aargard
County Greenwood **State Kansas**

Location: **690 FSL & 990 FWL**
 Other Services: **Perforate**

Sec. 31 Type: **Z3S** Rate: **10E** Elevation: **1372'**
 Permit Duration: **GL** Log Measured From: **S From GL** K.E. **137'**
 Logging Measured From: **S From GL** D.F. **NA**
 Date: **04-03-2015** Cite: **SL 1372**

Run Number: **24500**
 Depth Logger: **24429**
 Bottom Logged Interval: **24419 - 24419**
 Top Log Interval: **2300**
 Fluid Level: **Water**

Density / Viscosity: **NA**
 Slurry / PPH / G: **NA**
 Max. Recorded Temp: **NA**
 Equipment: **107** Location: **Osawatomie**
 Recorder No.: **00** Recorder: **Steve Winkler**

Witnessed By: **Steve Winkler**
 Rechecked By: **Steve Winkler**

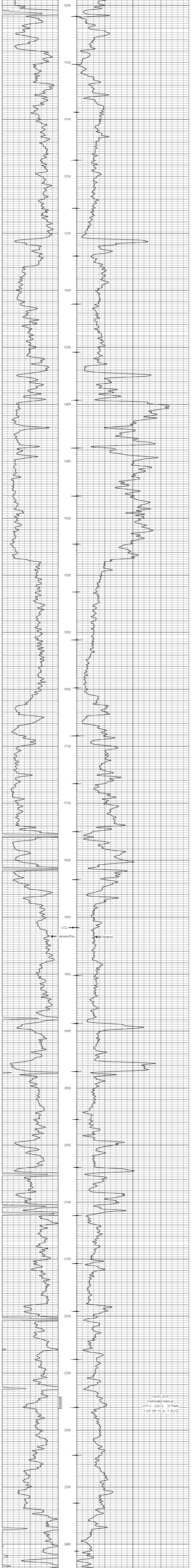
BIT	FROM	TO	SIZE	WGT	FROM	TO
12.25"	0.0	2100	8.625"	23.0#	0.0	2100
7.875"	2100.0	25500	3.50"	14.0#	0.0	2480

<<< Fold Here >>>

All interpretations are opinions based on inferences from electrical or other measurements and we cannot and do not guarantee the accuracy or correctness of any interpretation, and we shall not accept in the case of gross or willful negligence on our part, be liable or responsible for any loss, costs, damages, or expenses incurred or sustained by anyone resulting from any interpretation made by any of our officers, agents or employees. These interpretations are also subject to our general terms and conditions set out in our current Price Schedule.

Comments: **Drilling Contractor : C & G Drilling Company**

Database File: **martindell 1-31.db**
 Dataset Pathname: **pass 1**
 Presentation Format: **gr-n-ccl**
 Dataset Creation: **Fri, Apr 03 11:19:29 2015 by Log SCH 111116**
 Charted by: **Depth in Feet scaled 1.240**



04-03-2015
 Perforated Interval
 2271.0 - 2281.0 31 Perfs.
 3 3/8" DP 19" Gr. T. ECG