



**DUAL INDUCTION
LL3/GR LOG**

Company **COLT ENERGY INC.**
 Well **PENDLEY # 22-i**
 Field **BIG SANDY**
 County **WOODSON** State **KANSAS**

Company **COLT ENERGY INC.**
 Well **PENDLEY # 22-i**
 Field **BIG SANDY**
 County **WOODSON**
 State **KANSAS**

Location: API #: 15-207-29220-0000
 SE NE NE SE
 1990' FSL & 65' FEL
 SEC 22 TWP 26S RGE 14E
 Permanent Datum **GL** Elevation **935' est**
 Log Measured From **GL**
 Drilling Measured From **GL**
 Other Services **CDL/SWN**
 Elevation **K.B. ---
D.F. ---
G.L. 935' est**

Date	5-21-2015
Run Number	ONE
Depth Driller	1398'
Depth Logger	1397'
Bottom Logged Interval	1396'
Top Log Interval	SURFACE
Casing Driller	8.625" @ 42.80'
Casing Logger	8.625" @ 42.80'
Bit Size	6.75"
Type Fluid in Hole	WATER
Density / Viscosity	
pH / Fluid Loss	
Source of Sample	
Rm @ Meas. Temp	
Rmf @ Meas. Temp	
Rmc @ Meas. Temp	
Source of Rmf / Rmc	
Rm @ BHT	
Time Circulation Stopped	
Time Logger on Bottom	
Maximum Recorded Temperature	
Equipment Number	OW2
Location	HOMINY, OK
Recorded By	LOWERY
Witnessed By	MR. BALLARD

<<< Fold Here >>>

All interpretations are opinions based on inferences from electrical or other measurements and we cannot and do not guarantee the accuracy or correctness of any interpretation, and we shall not, except in the case of gross or willful negligence on our part, be liable or responsible for any loss, costs, damages, or expenses incurred or sustained by anyone resulting from any interpretation made by any of our officers, agents or employees. These interpretations are also subject to our general terms and conditions set out in our current Price Schedule.

Comments

OW2-8827
CREW : SHAMBLES

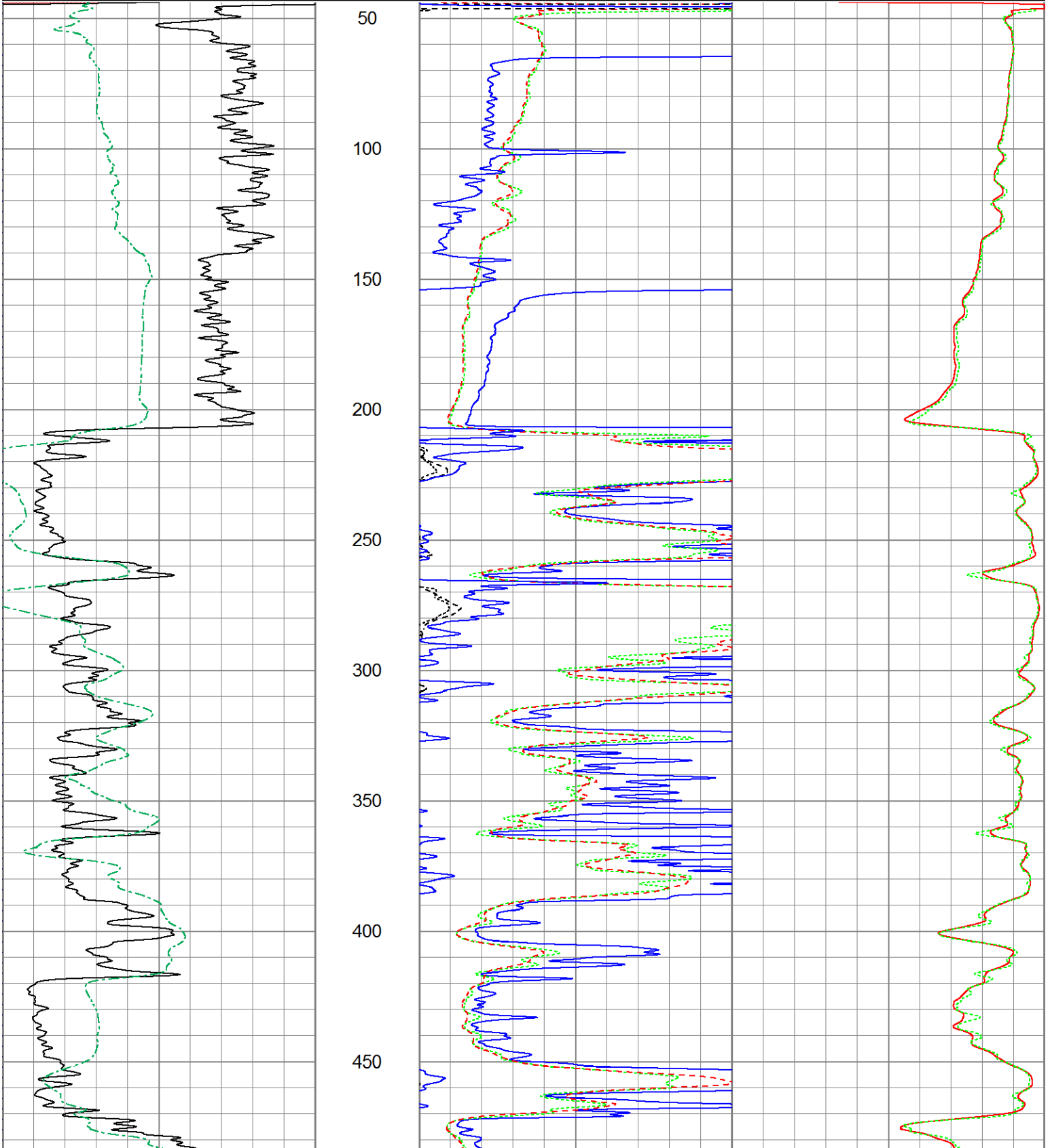


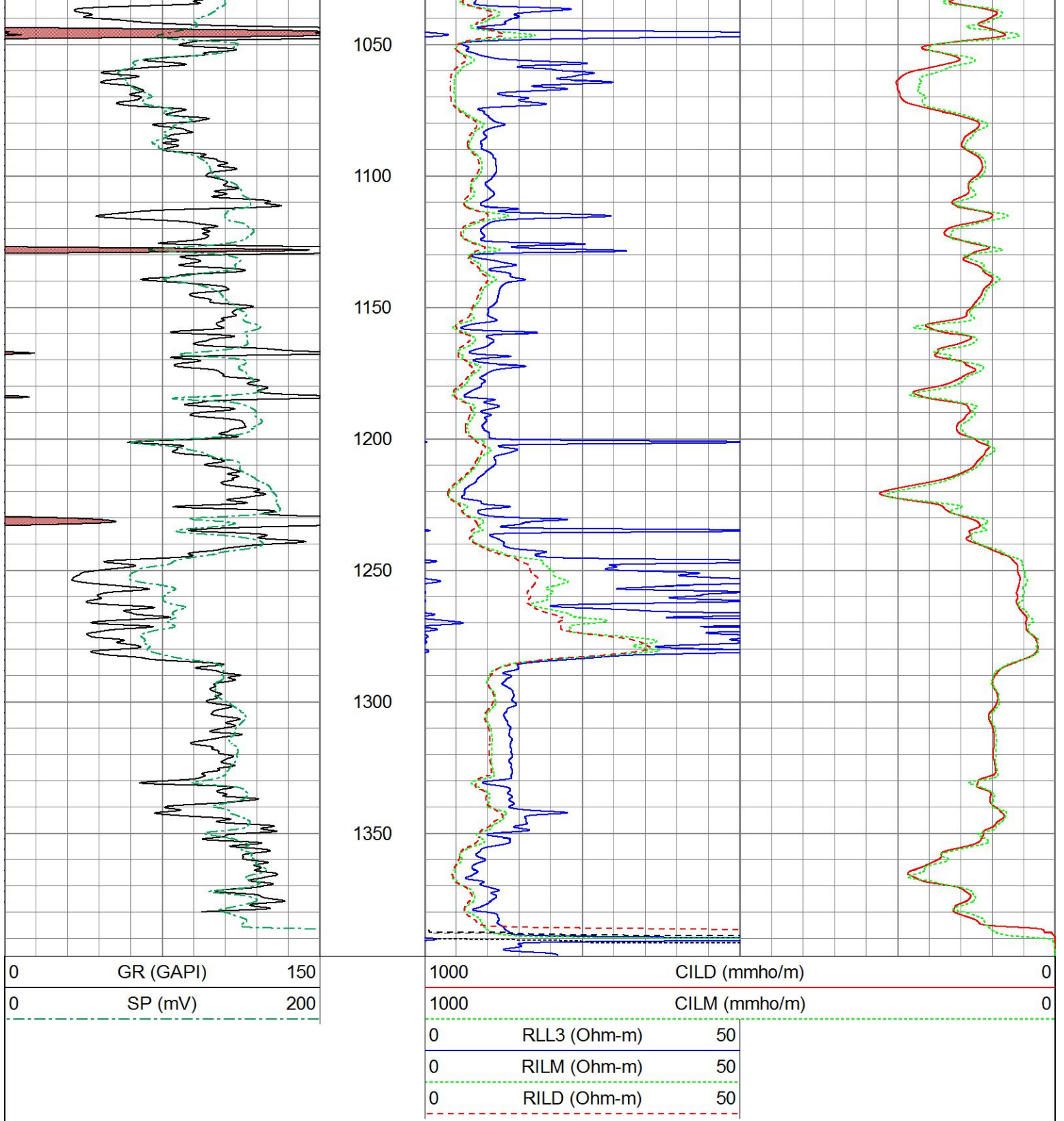
2" DIL SECTION

Database File ow2-8827 colt energy.db
 Dataset Pathname DIL/pass1.6
 Presentation Format dil2mdcol
 Dataset Creation Thu May 21 11:51:05 2015
 Charted by Depth in Feet scaled 1:600

0	GR (GAPI)	150
0	SP (mV)	200

1000	CILD (mmho/m)	0
1000	CILM (mmho/m)	0
0	RLL3 (Ohm-m)	50
0	RILM (Ohm-m)	50
0	RILD (Ohm-m)	50



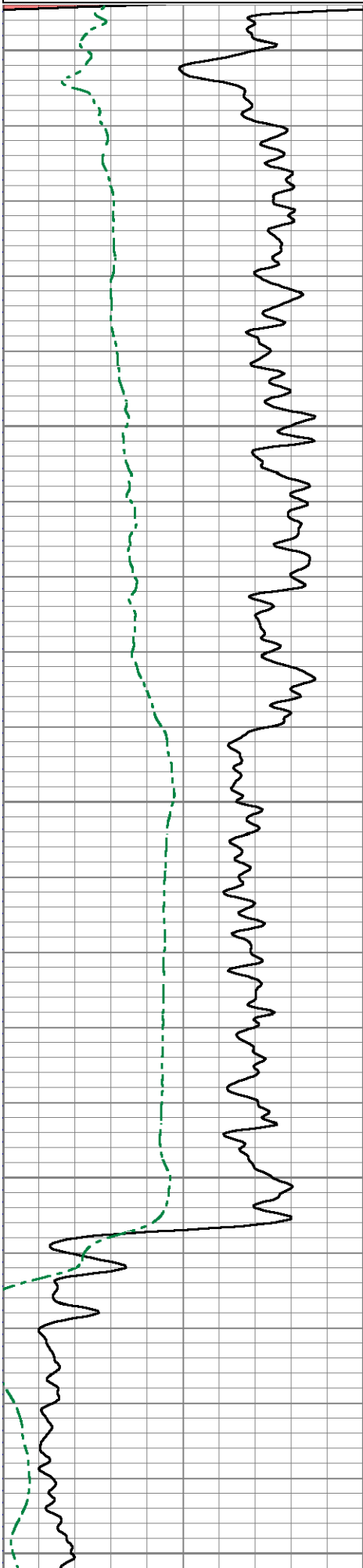


5" DIL SECTION

Database File ow2-8827 colt energy.db
 Dataset Pathname DIL/pass1.5
 Presentation Format dil5mdcol
 Dataset Creation Thu May 21 11:51:00 2015
 Charted by Depth in Feet scaled 1:240

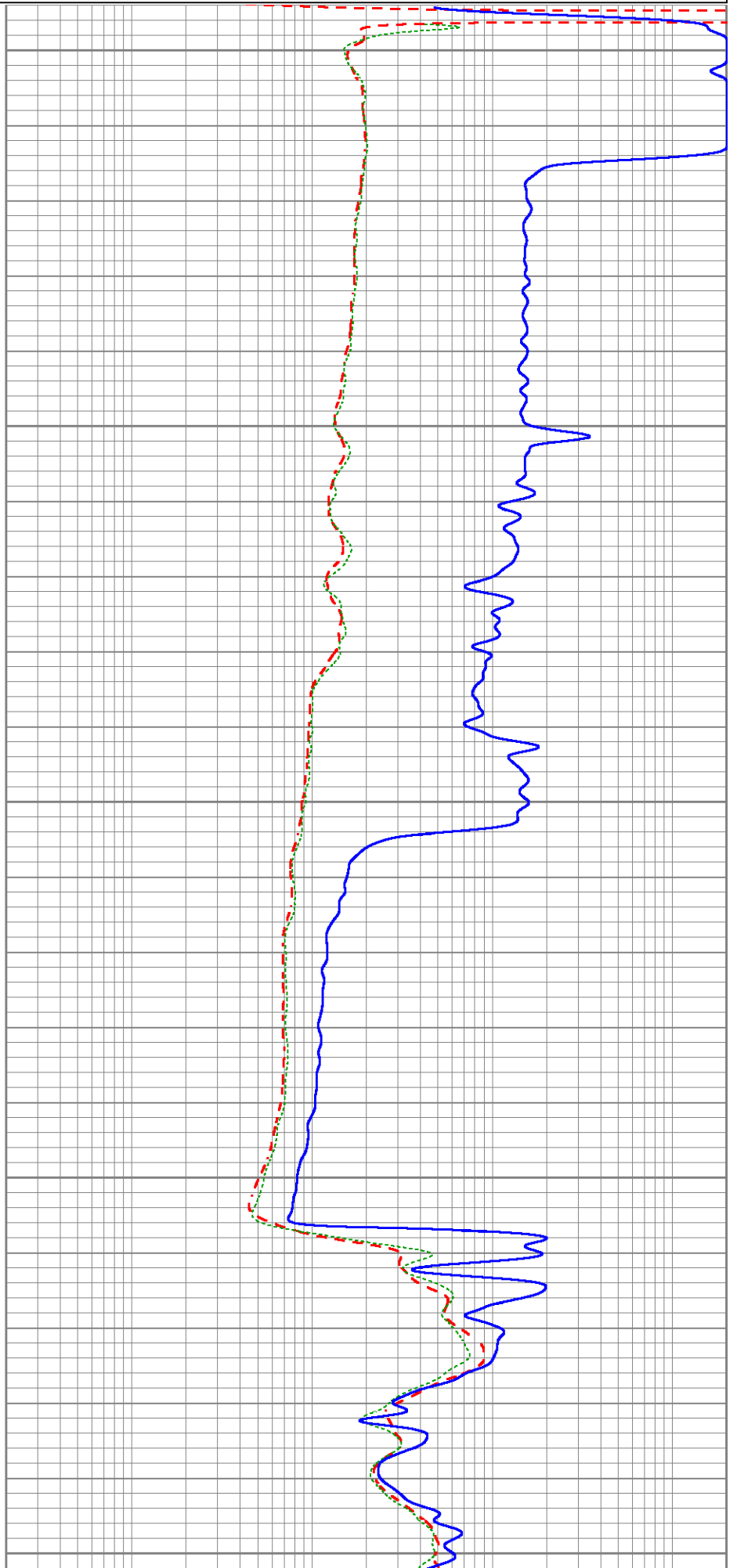


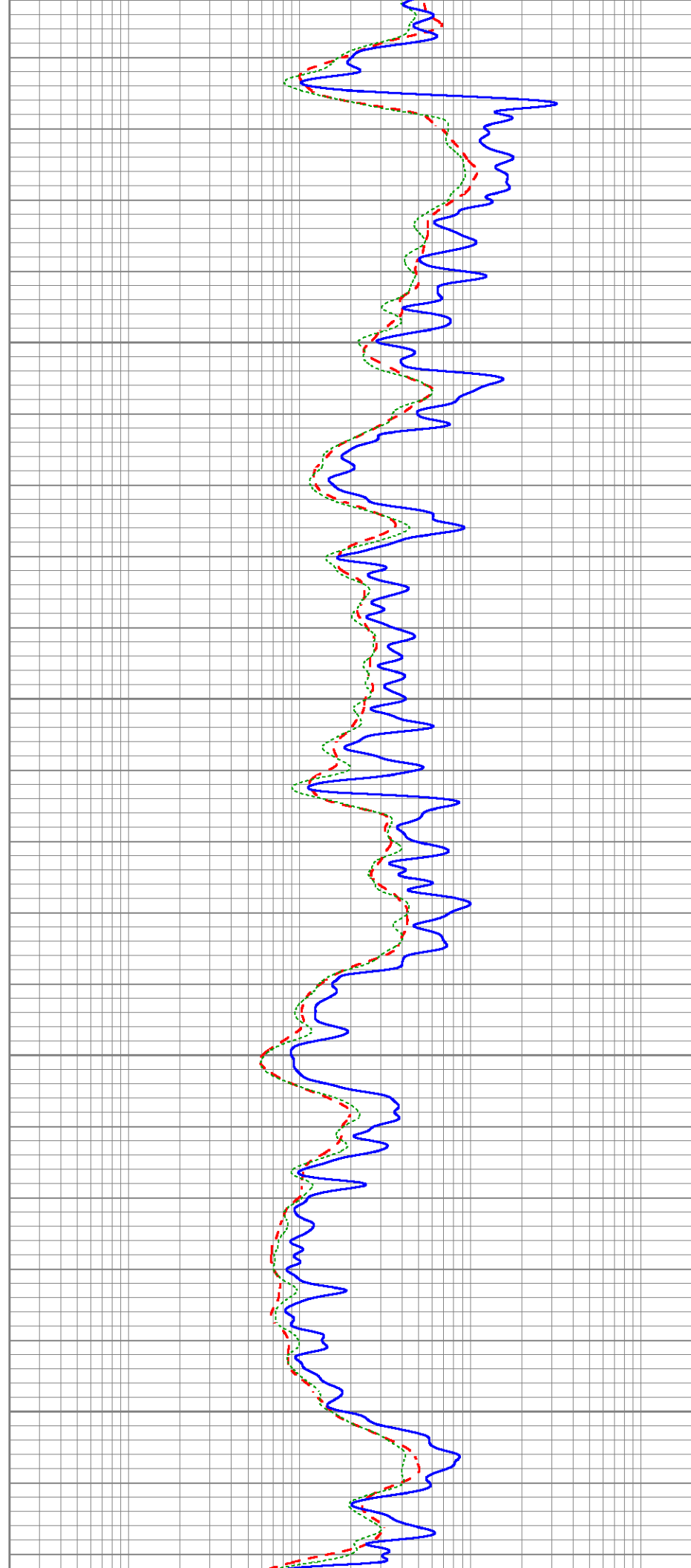
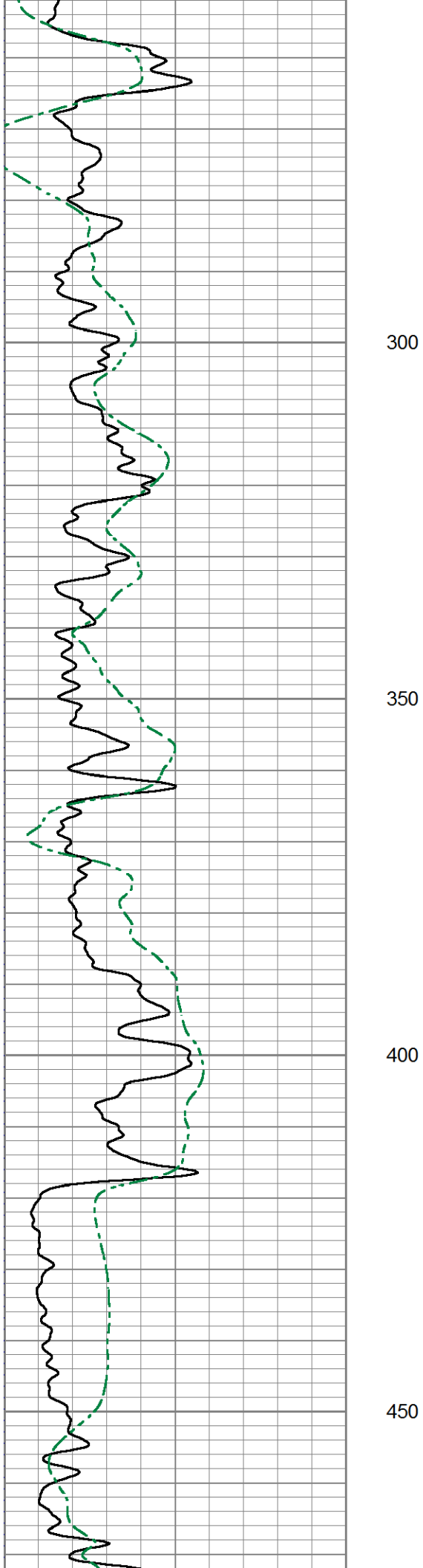
0 SP (mV) 200

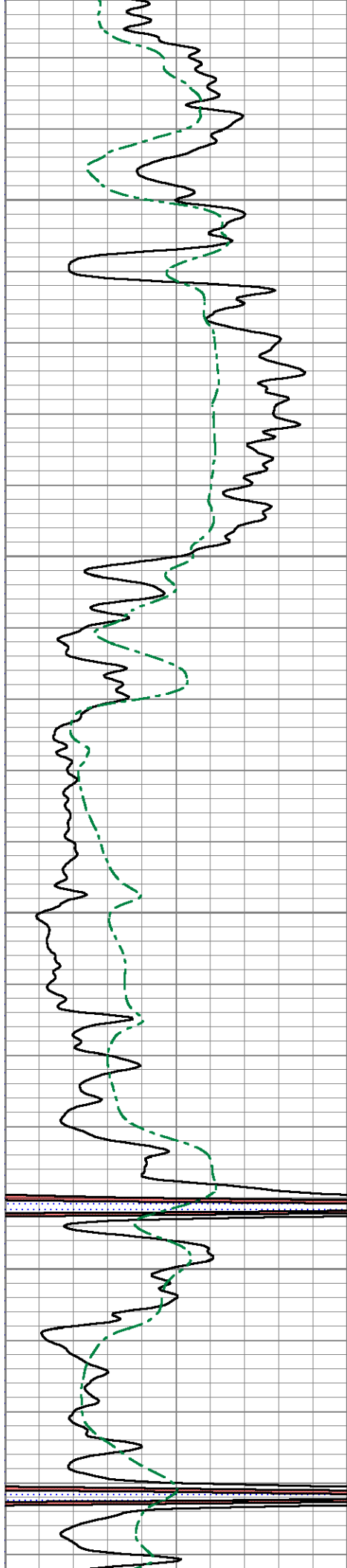


0.2 Medium Resistivity (Ohm-m) 2000

0.2 Shallow Resistivity (Ohm-m) 2000





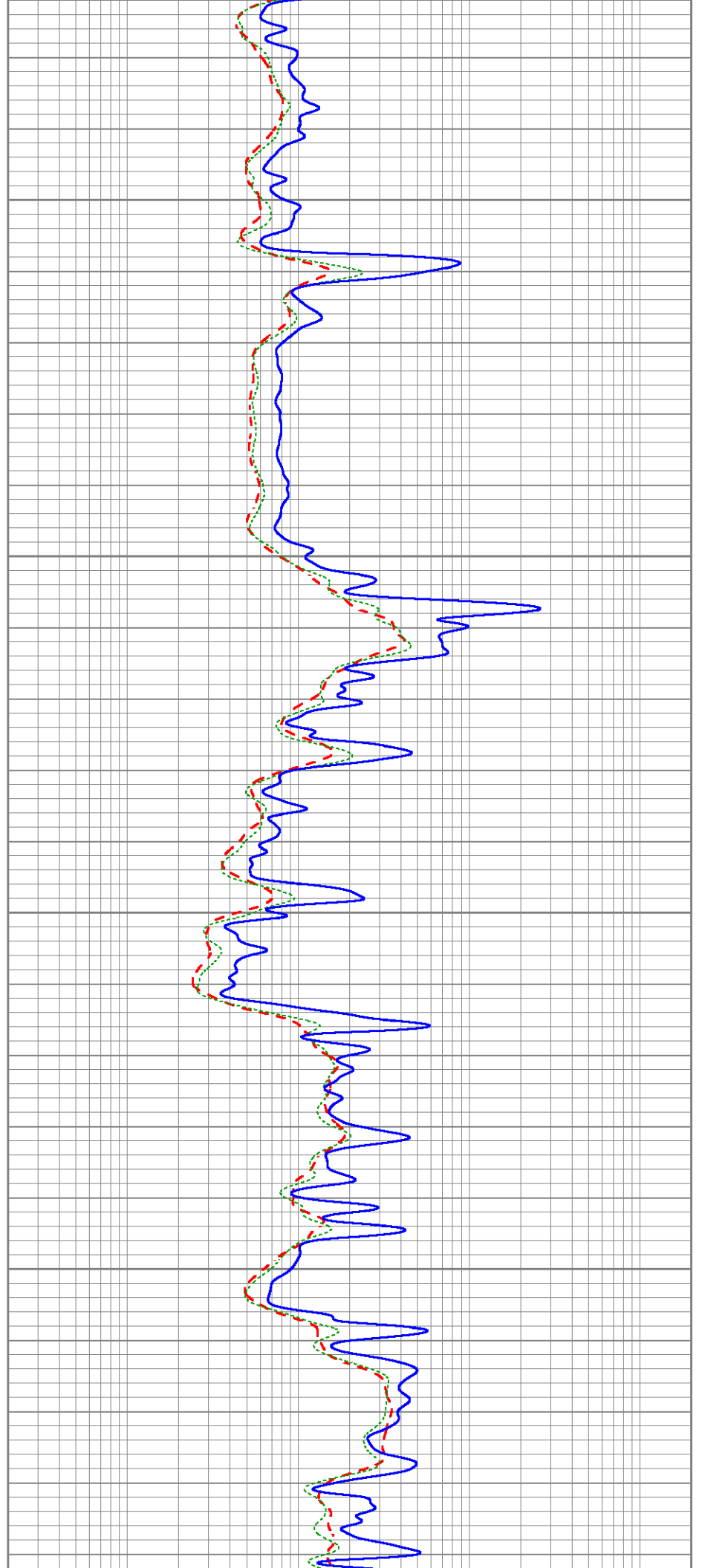


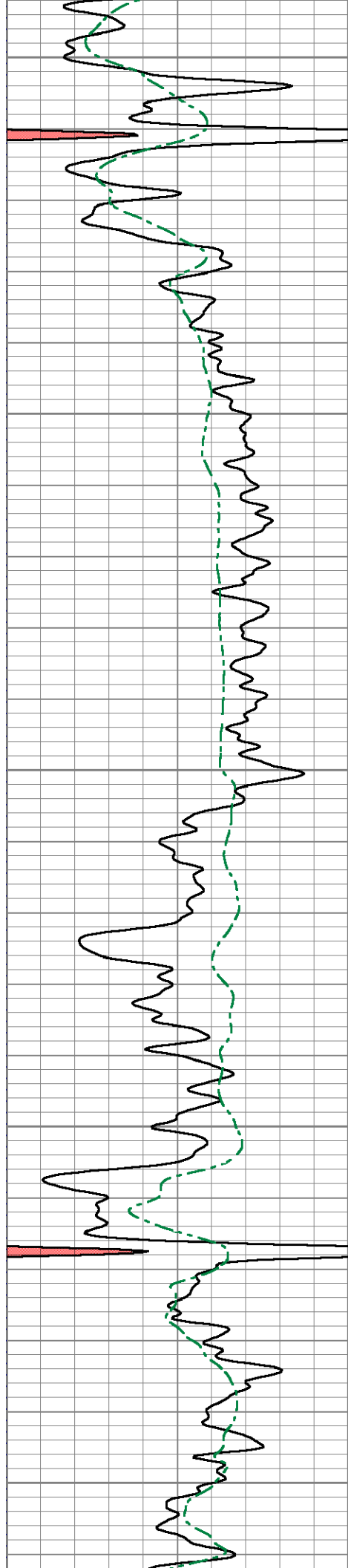
500

550

600

650





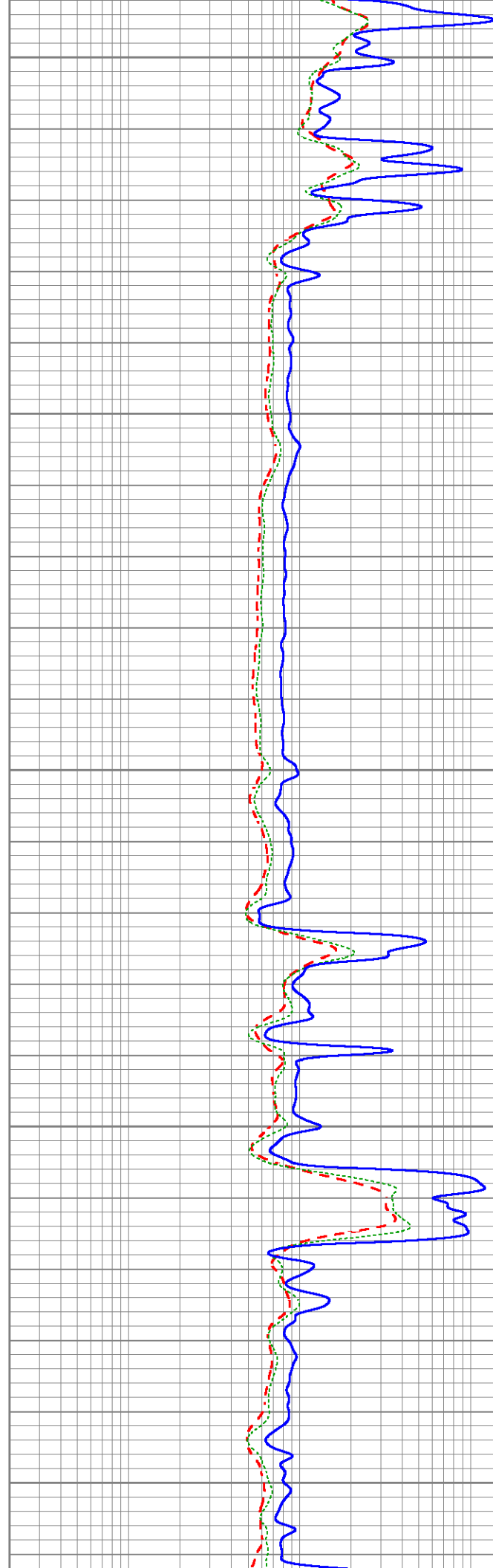
700

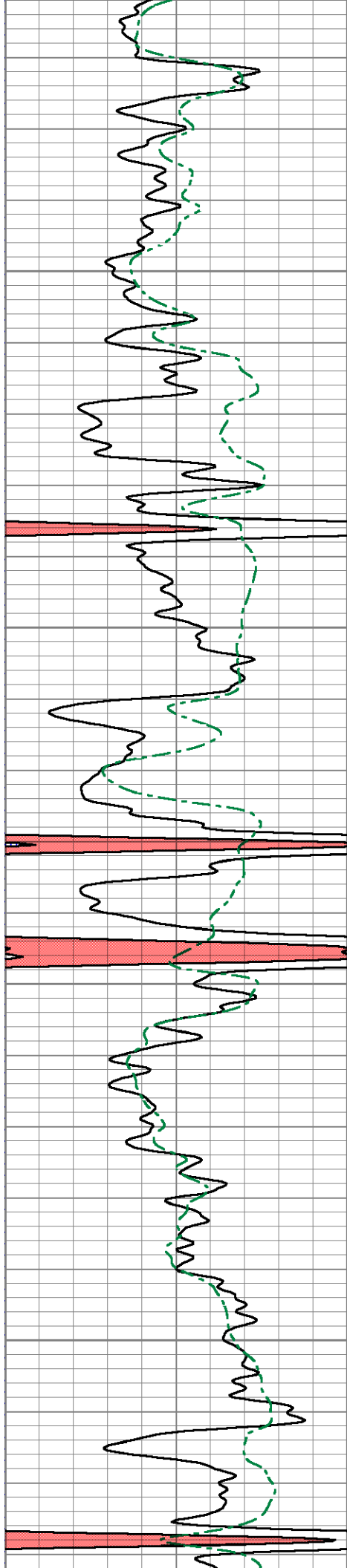
750

800

850

900



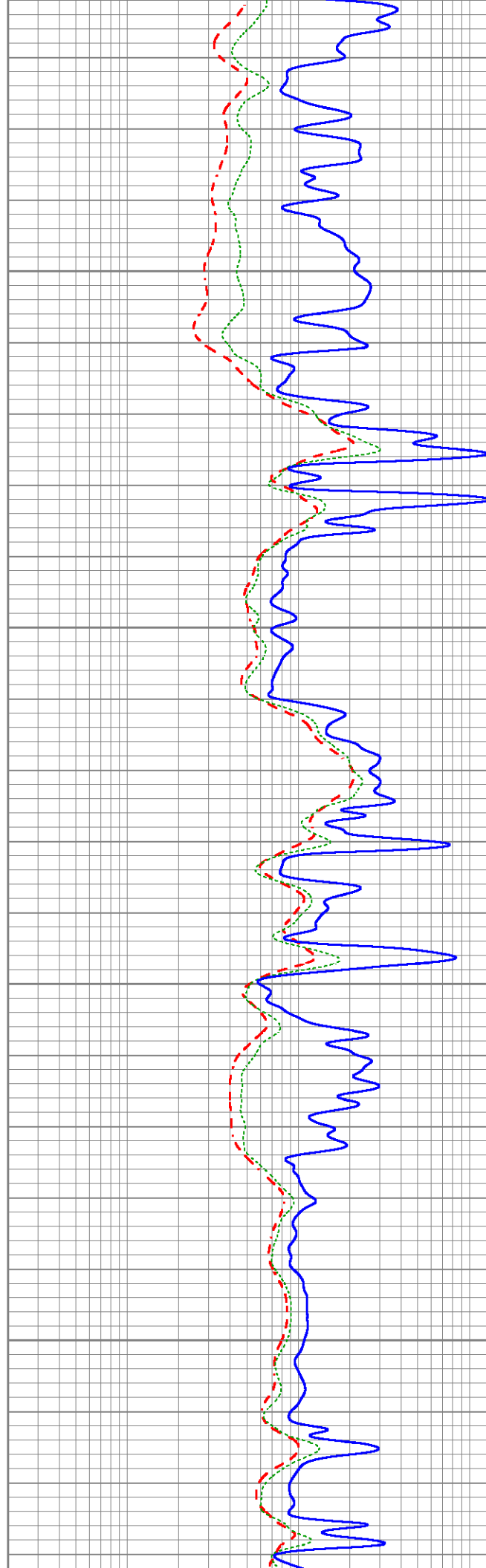


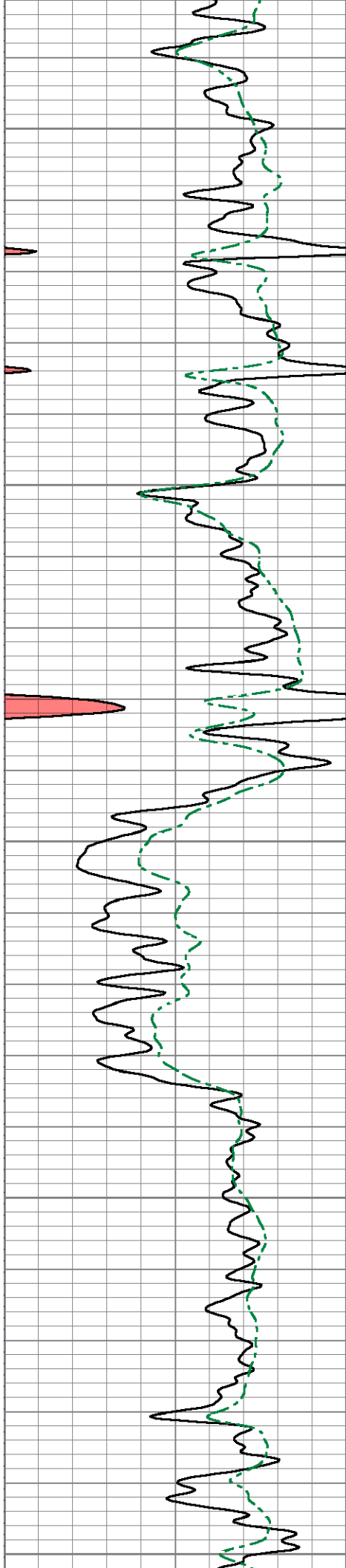
950

1000

1050

1100





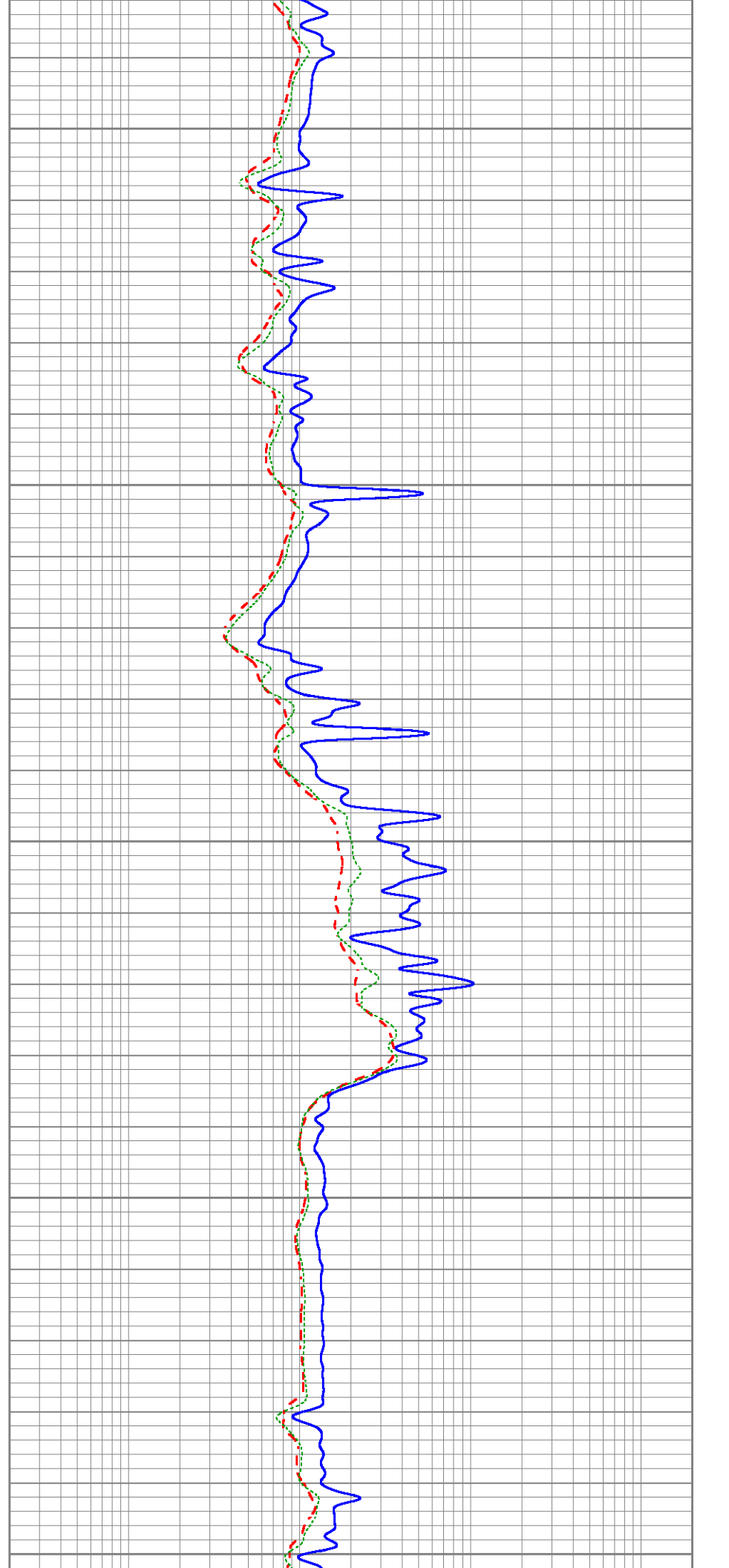
1150

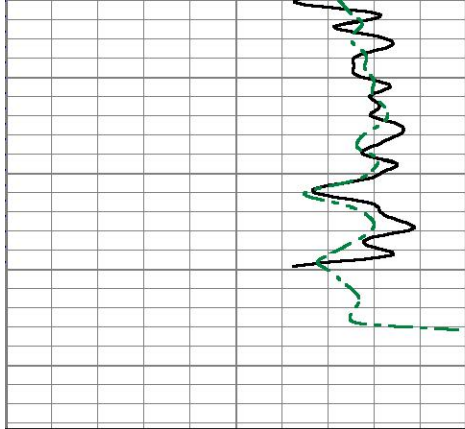
1200

1250

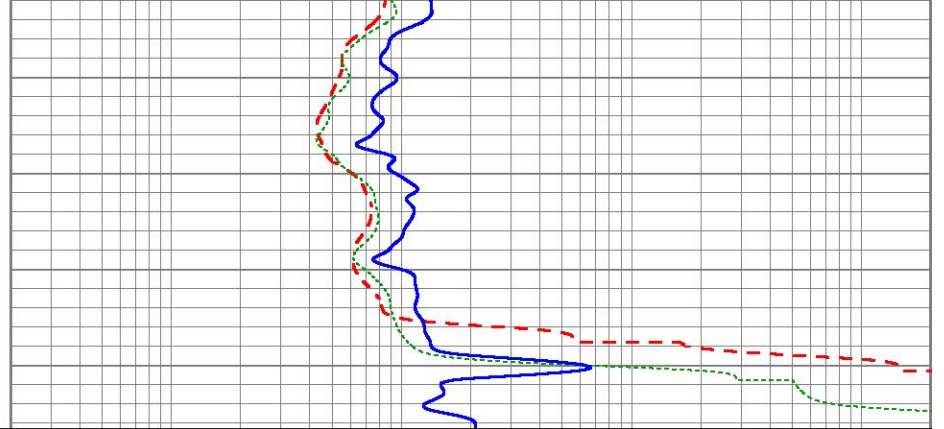
1300

1350





0	Gamma Ray (GAPI)	150
0	SP (mV)	200



0.2	Deep Resistivity (Ohm-m)	2000
0.2	Medium Resistivity (Ohm-m)	2000
0.2	Shallow Resistivity (Ohm-m)	2000

Sensor	Offset (ft)	Schematic	Description	Length (ft)	O.D. (in)	Weight (lb)
			Cable-CableHead Isulation Sub	1.42	3.00	20.00
CILD SP	10.92 10.42		DIL-GEAR (158) Dual Induction Electrical Log	21.36	4.00	395.00
CILM	7.00					
RLL3	1.65					

Dataset: ow2-8827 colt energy.db: field/well/DIL/pass1
 Total length: 22.78 ft
 Total weight: 415.00 lb
 O.D.: 4.00 in