



**COMPLETION
& PRODUCTION
SERVICES CO.**

**COMPENSATED
DENSITY / NEUTRON
LOG**

Company MAI OIL OPERATIONS, INC.
Well ALEX DECHANT #2
Field WILDCAT
County NESS State KANSAS

Company MAI OIL OPERATIONS, INC.
Well ALEX DECHANT #2
Field WILDCAT
County NESS
State KANSAS

Location: API # : 15-135-28785-00-00
1665' FNL & 2000' FEL
SE - NW - SW - NE
SEC 17 TWP 20S RGE 22W
Permanent Datum GROUND LEVEL Elevation 2216
Log Measured From KELLY BUSHING 9' A.G.L.
Drilling Measured From KELLY BUSHING
Other Services
DILMEL
Elevation
K.B. 2225
D.F. 2223
G.L. 2216

Date	7/19/14		
Run Number	ONE		
Depth Driller	4430		
Depth Logger	4430		
Bottom Logged Interval	4406		
Top Log Interval	3500		
Casing Driller	8 5/8 @ 264'		
Casing Logger	265'		
Bit Size	7.875		
Type Fluid in Hole	CHEMICAL MUD		
Density / Viscosity	9.4/59	CHLORIDES 11,200 PPM	
pH / Fluid Loss	8.5/16.4		
Source of Sample	FLOWLINE		
Rm @ Meas. Temp	0.35 @ 81F		
Rmf @ Meas. Temp	0.26 @ 81F		
Rmc @ Meas. Temp	0.42 @ 81F		
Source of Rmf / Rmc	MEASURED		
Rm @ BHT	0.24 @ 120F		
Time Circulation Stopped	2 HOURS		
Time Logger on Bottom			
Maximum Recorded Temperature	120F		
Equipment Number	3802		
Location	HAYS, KS.		
Recorded By	IAN MABB		
Witnessed By	CLINT MUSGROVE		

<<< Fold Here >>>

All interpretations are opinions based on inferences from electrical or other measurements and we cannot and do not guarantee the accuracy or correctness of any interpretation, and we shall not, except in the case of gross or willful negligence on our part, be liable or responsible for any loss, costs, damages, or expenses incurred or sustained by anyone resulting from any interpretation made by any of our officers, agents or employees. These interpretations are also subject to our general terms and conditions set out in our current Price Schedule.

Comments

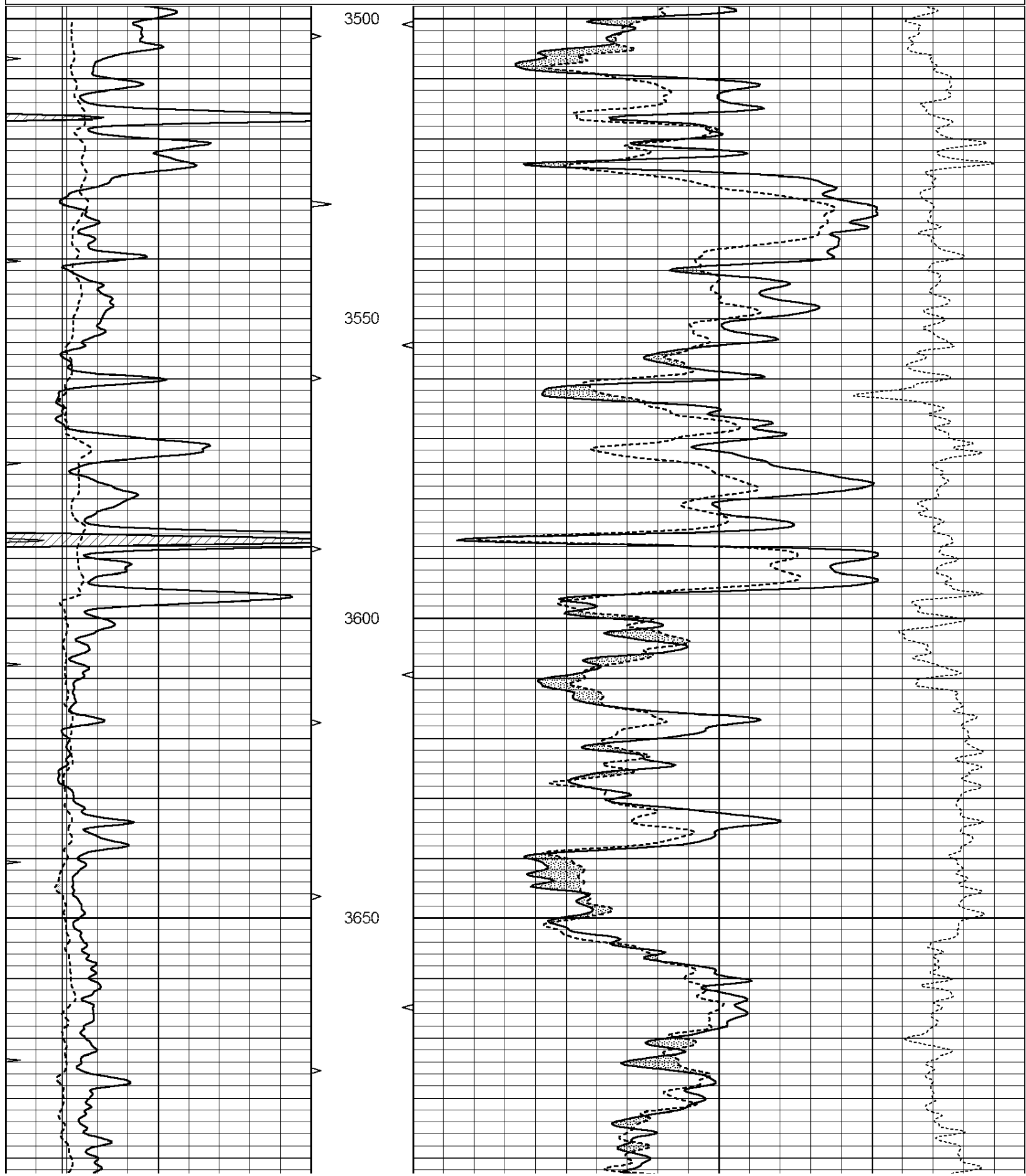
NABORS COMPLETION & PRODUCTION SERVICES CO.

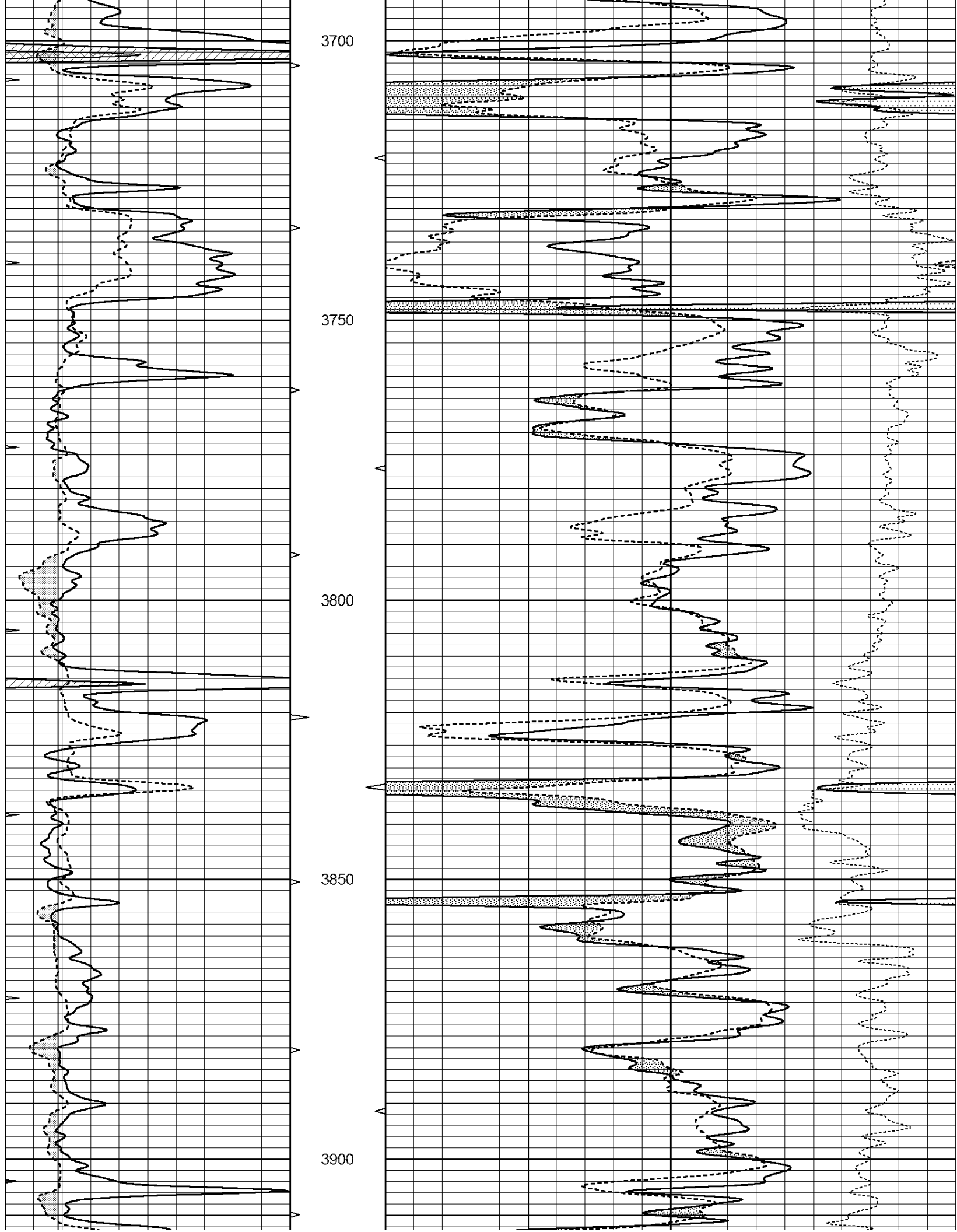
785 (628 - 6395)

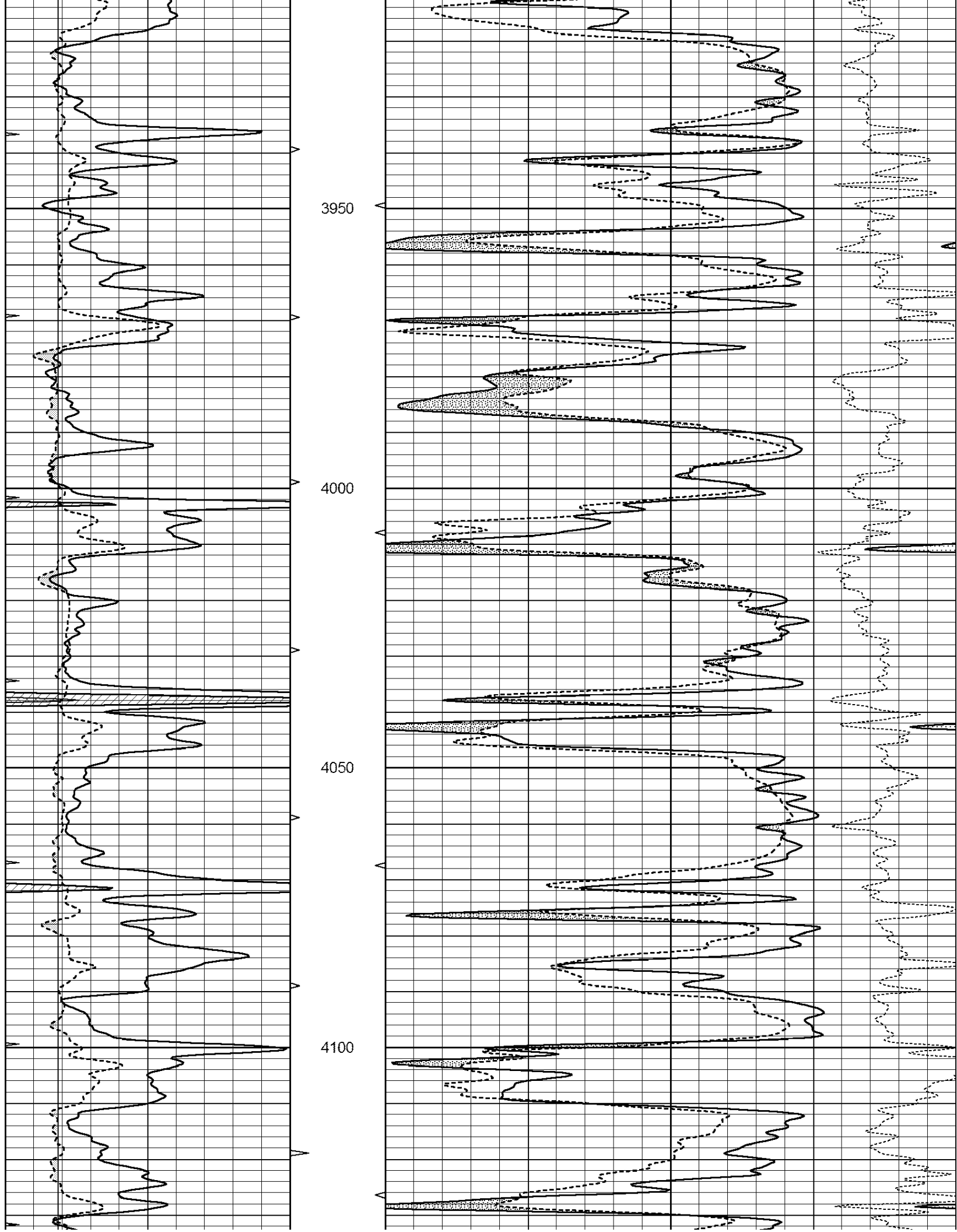
THANK YOU FOR YOUR BUSINESS

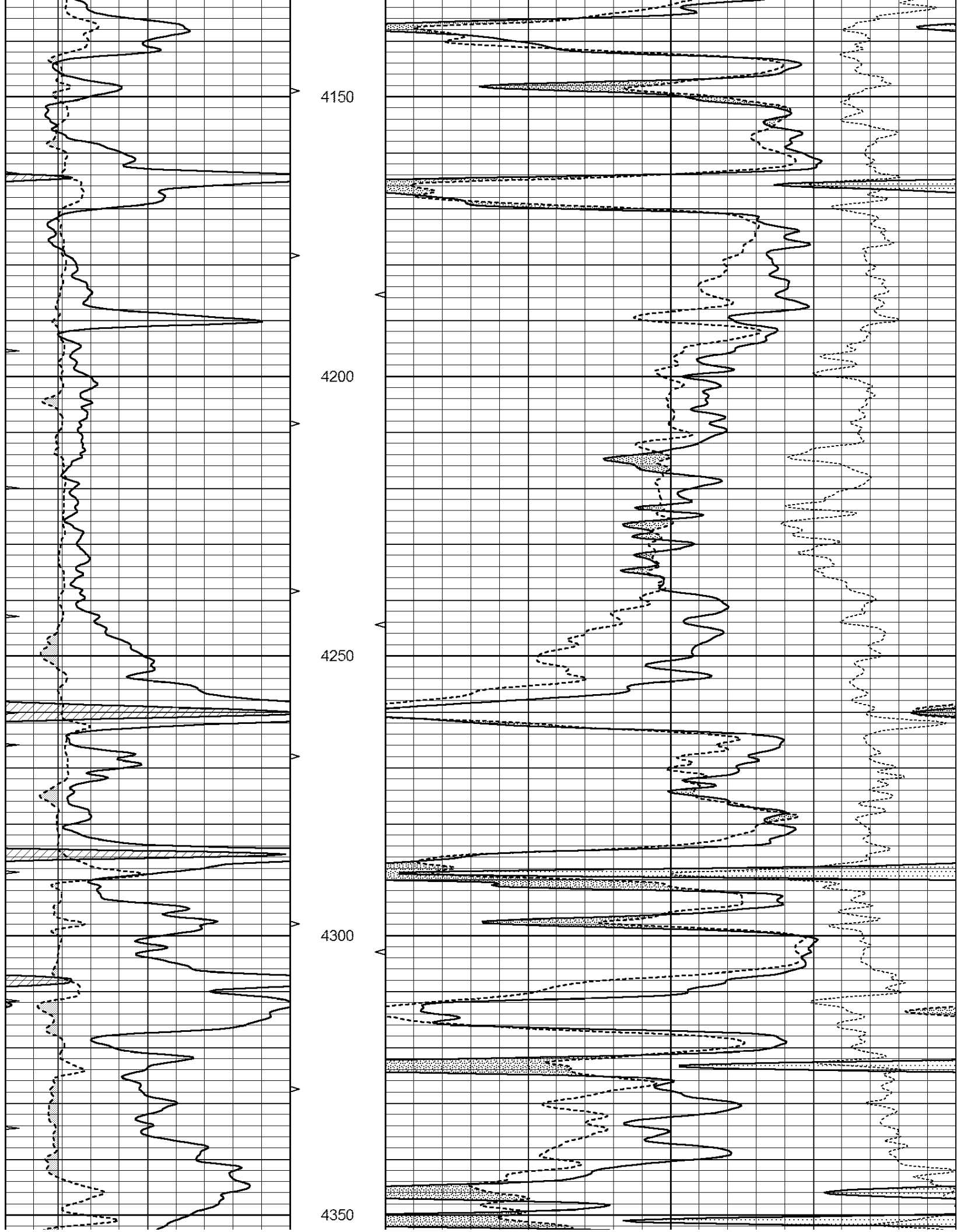
DIRECTIONS : NESS CITY, KS. - 7 MILES SOUTH TO RD 50 - 7 MILES EAST TO RD Z - 1 MILE SOUTH - 1/2 MILE WEST - SOUTH INTO

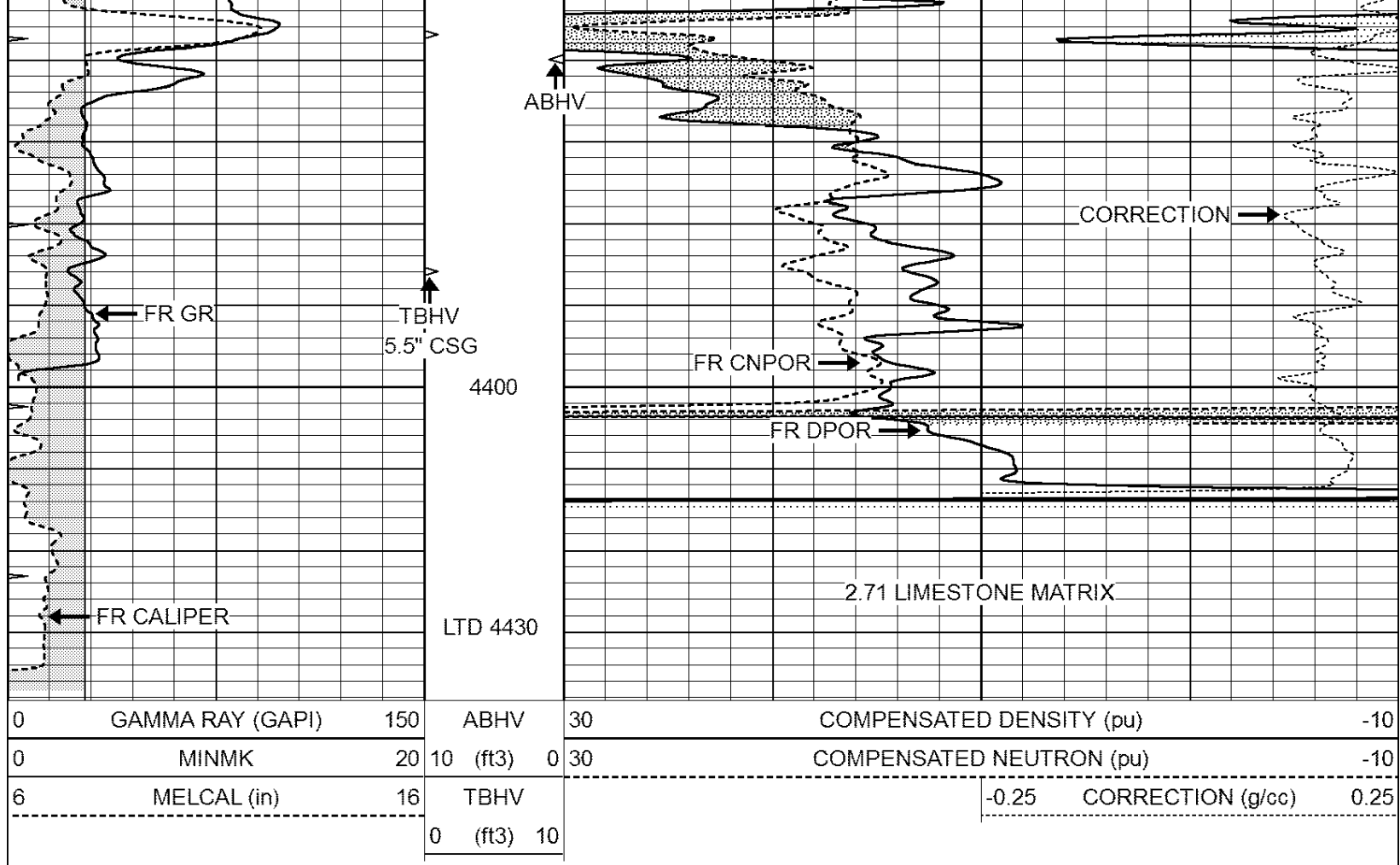
0	GAMMA RAY (GAPI)	150	ABHV	30	COMPENSATED DENSITY (pu)	-10
0	MINMK	20	10 (ft3)	0 30	COMPENSATED NEUTRON (pu)	-10
6	MELCAL (in)	16	TBHV		-0.25 CORRECTION (g/cc)	0.25
			0 (ft3)	10		







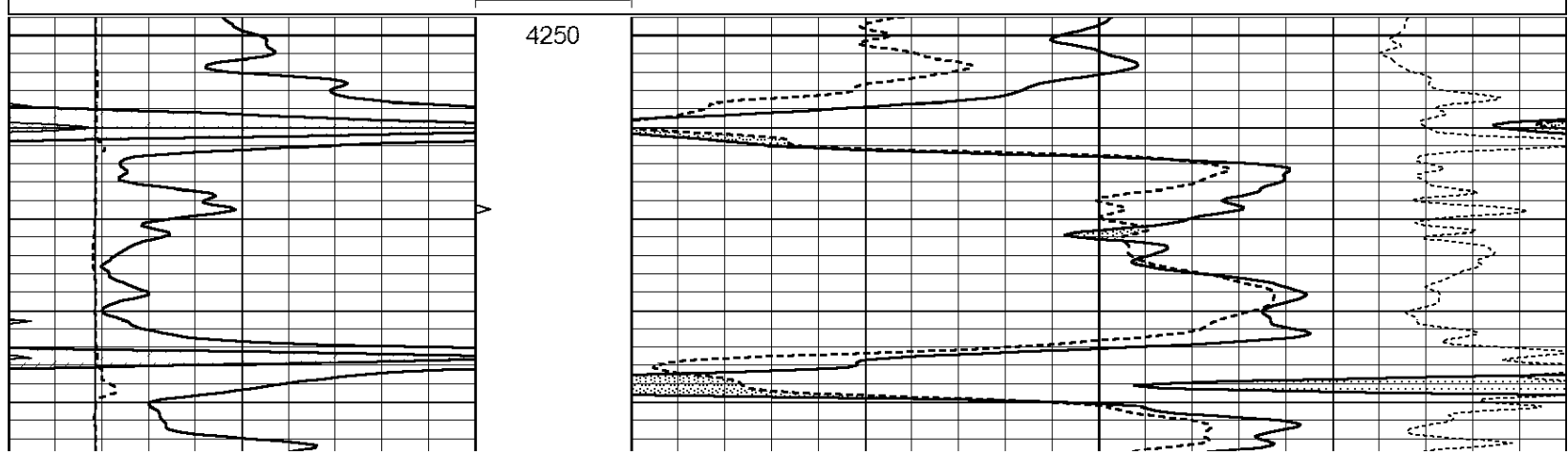


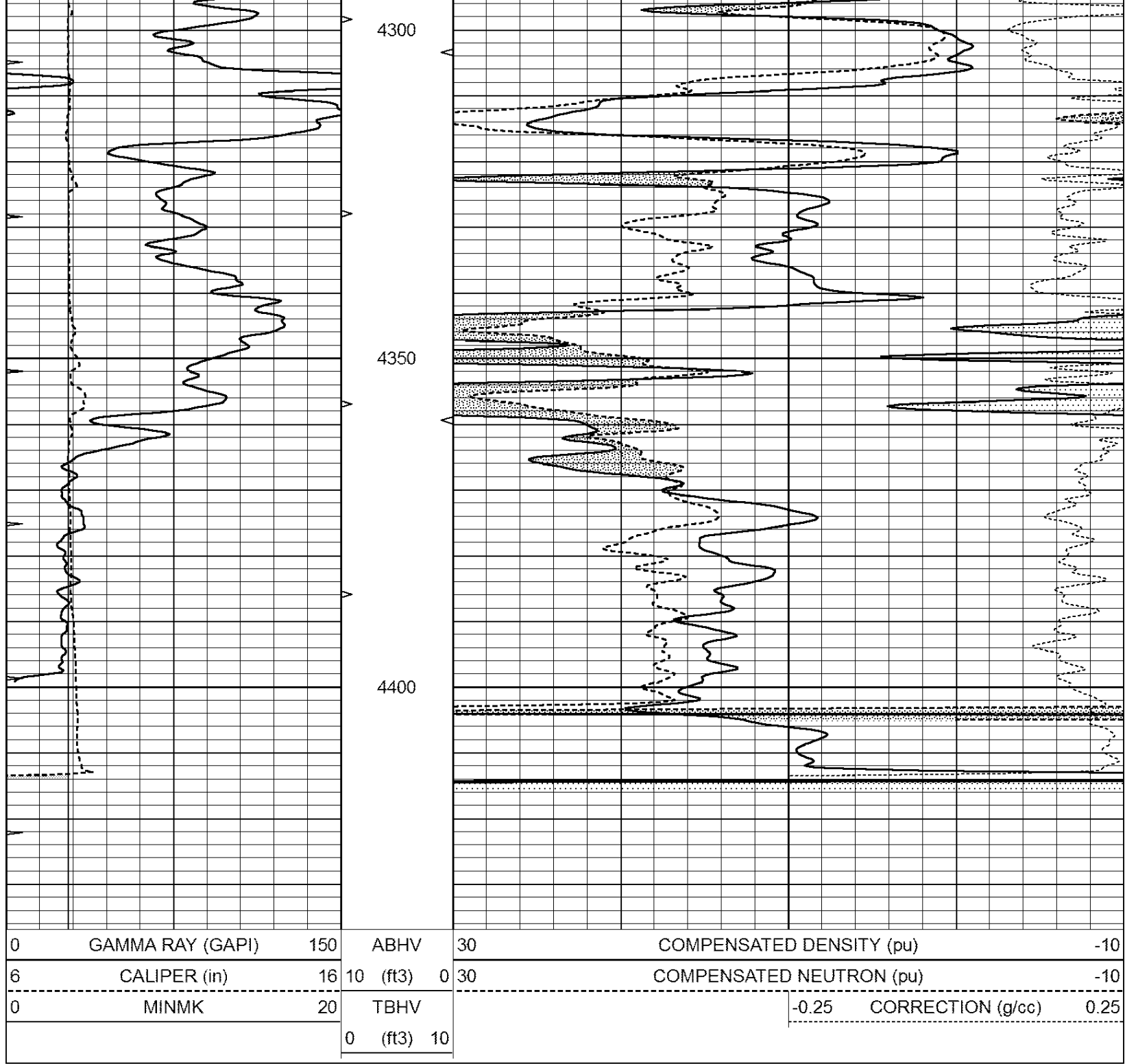


REPEAT SECTION

Database File: 2409ddn.db
 Dataset Pathname: pass2.1.1
 Presentation Format: _den_neu
 Dataset Creation: Sat Jul 19 01:11:50 2014 by Calc Open-Cased 090629
 Charted by: Depth in Feet scaled 1:240

0	GAMMA RAY (GAPI)	150	ABHV	30	COMPENSATED DENSITY (pu)	-10
6	CALIPER (in)	16	10 (ft3) 0	30	COMPENSATED NEUTRON (pu)	-10
0	MINMK	20	TBHV		-0.25 CORRECTION (g/cc)	0.25
			0 (ft3) 10			





Calibration Report

Database File: 2409ddn.db
 Dataset Pathname: pass3.1.8
 Dataset Creation: Sat Jul 19 04:45:02 2014

Dual Induction Calibration Report

Serial-Model:	PROBE7-DILG
Surface Cal Performed:	Thu Aug 29 12:01:20 2013
Downhole Cal Performed:	Sat Jan 19 19:51:38 2013
After Survey Verification Performed:	Sat Jan 19 19:51:38 2013

Surface Calibration

	Readings		References		Results
Loop:	Air	Loop	Air	Loop	m b

Deep	0.793	0.790	V	0.000	400.000	mmho/m	500.000	20.000
Medium	0.992	1.002	V	0.000	464.000	mmho/m	520.000	-24.000
Internal:	Zero	Cal		Zero	Cal		m	b
Deep	0.041	0.642	V	0.000	400.000	mmho/m	664.874	-27.011
Medium	0.035	0.802	V	0.000	464.000	mmho/m	604.936	-21.367

Downhole Calibration								
	Readings			References			Results	
	Zero	Cal		Zero	Cal		m'	b'
Deep	135384.000	27094.500	mmho/m	135400.000	27082.400	mmho/m	1.000	-19.259
Medium	-47330.100	-9381.740	mmho/m	-47327.100	-9389.280	mmho/m	1.000	-10.154
LL3		7.322	V		1400.000	Ohm-m		
		0.038	V		20.000	Ohm-m		
		-7.273	V		4000.000	mmho-m		

After Survey Verification								
	Readings			Targets			Results	
	Zero	Cal		Zero	Cal		m'	b'
Deep	0.000	0.000	mmho/m	135384.000	27094.500	mmho/m	1.000	0.000
Medium	0.000	0.000	mmho/m	-47330.100	-9381.740	mmho/m	1.000	0.000
LL3		0.000	Ohm-m		1400.000	Ohm-m		
		0.000	Ohm-m		20.000	Ohm-m		
		0.000	mmho-m		4000.000	mmho-m		

Compensated Density Calibration Report

Serial-Model:	GEAR5-GEARHART
Source / Verifier:	147 / 147
Master Calibration Performed:	Fri Jul 04 19:27:51 2014
Before Survey Verification Performed:	
After Survey Verification Performed:	

Master Calibration						
	Density			Far Detector	Near Detector	
Magnesium	1.710	g/cc		943.83	576.01	cps
Aluminum	2.590	g/cc		212.01	399.19	cps
	Spine Angle = 76.20			Density/Spine Ratio = 0.572		
	Size			Reading		
Small Ring	8.40	in		1.64	V	
Large Ring	14.00	in		2.93	V	

Before Survey Verification						
	Target			Measured		
		g/cc				g/cc
		g/cc				g/cc
		g/cc				g/cc

After Survey Verification						
	Target			Measured		
		g/cc				g/cc
		g/cc				g/cc
		g/cc				g/cc

Compensated Neutron Calibration Report

Serial Number: 080620
Tool Model: Probe

PRE-SURVEY VERIFICATION

Detector	Readings	Measured	Target
Short Space	cps		
Long Space	cps	pu	pu

POST-SURVEY VERIFICATION

Detector	Readings	Measured	Target
Short Space	cps		
Long Space	cps	pu	pu

Gamma Ray Calibration Report

Serial Number:	7	
Tool Model:	Probe1	
Performed:	Fri Jul 18 12:11:13 2014	
Calibrator Value:	1.0	GAPI
Background Reading:	0.0	cps
Calibrator Reading:	1.0	cps
Sensitivity:	0.5000	GAPI/cps