



**COMPLETION
& PRODUCTION
SERVICES CO.**

**MICRO
LOG**

Company MAI OIL OPERATIONS, INC.
Well ALEX DECHANT #2
Field WILDCAT
County NESS State KANSAS

Company MAI OIL OPERATIONS, INC.
Well ALEX DECHANT #2
Field WILDCAT
County NESS
State KANSAS

Location: API #: 15-135-28785-00-00
1665' FNL & 2000' FEL
SE - NW - SW - NE
SEC 17 TWP 20S RGE 22W
GROUND LEVEL Elevation 2216
Log Measured From KELLY BUSHING 9' A.G.L.
Drilling Measured From KELLY BUSHING
Other Services
CNL/CDL
DIL
Elevation
K.B. 2225
D.F. 2223
G.L. 2216

Date	7/19/14		
Run Number	TWO		
Depth Driller	4430		
Depth Logger	4430		
Bottom Logged Interval	4428		
Top Log Interval	3500		
Casing Driller	8 5/8 @ 264'		
Casing Logger	265'		
Bit Size	7.875		
Type Fluid in Hole	CHEMICAL MUD		
Density / Viscosity	9.4/59	CHLORIDES 11,200 PPM	
pH / Fluid Loss	8.5/16.4		
Source of Sample	FLOWLINE		
Rm @ Meas. Temp	0.35 @ 81F		
Rmf @ Meas. Temp	0.26 @ 81F		
Rmc @ Meas. Temp	0.42 @ 81F		
Source of Rmf / Rmc	MEASURED		
Rm @ BHT	0.24 @ 120F		
Time Circulation Stopped	2 HOURS		
Time Logger on Bottom			
Maximum Recorded Temperature	120F		
Equipment Number	3802		
Location	HAYS, KS.		
Recorded By	IAN MABB		
Witnessed By	CLINT MUSGROVE		

<<< Fold Here >>>

All interpretations are opinions based on inferences from electrical or other measurements and we cannot and do not guarantee the accuracy or correctness of any interpretation, and we shall not, except in the case of gross or willful negligence on our part, be liable or responsible for any loss, costs, damages, or expenses incurred or sustained by anyone resulting from any interpretation made by any of our officers, agents or employees. These interpretations are also subject to our general terms and conditions set out in our current Price Schedule.

Comments

NABORS COMPLETION & PRODUCTION SERVICES CO.

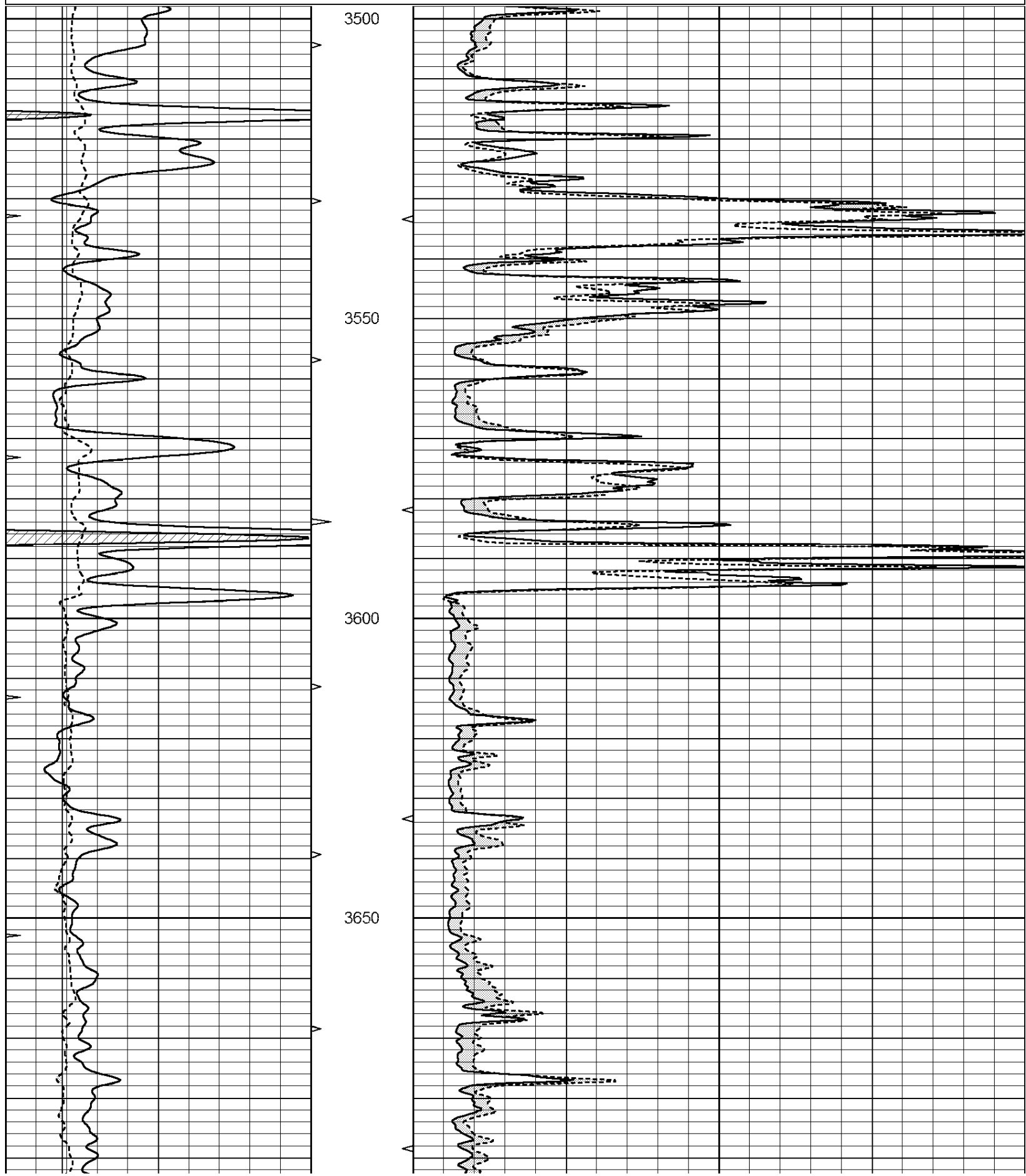
785 (628 - 6395)

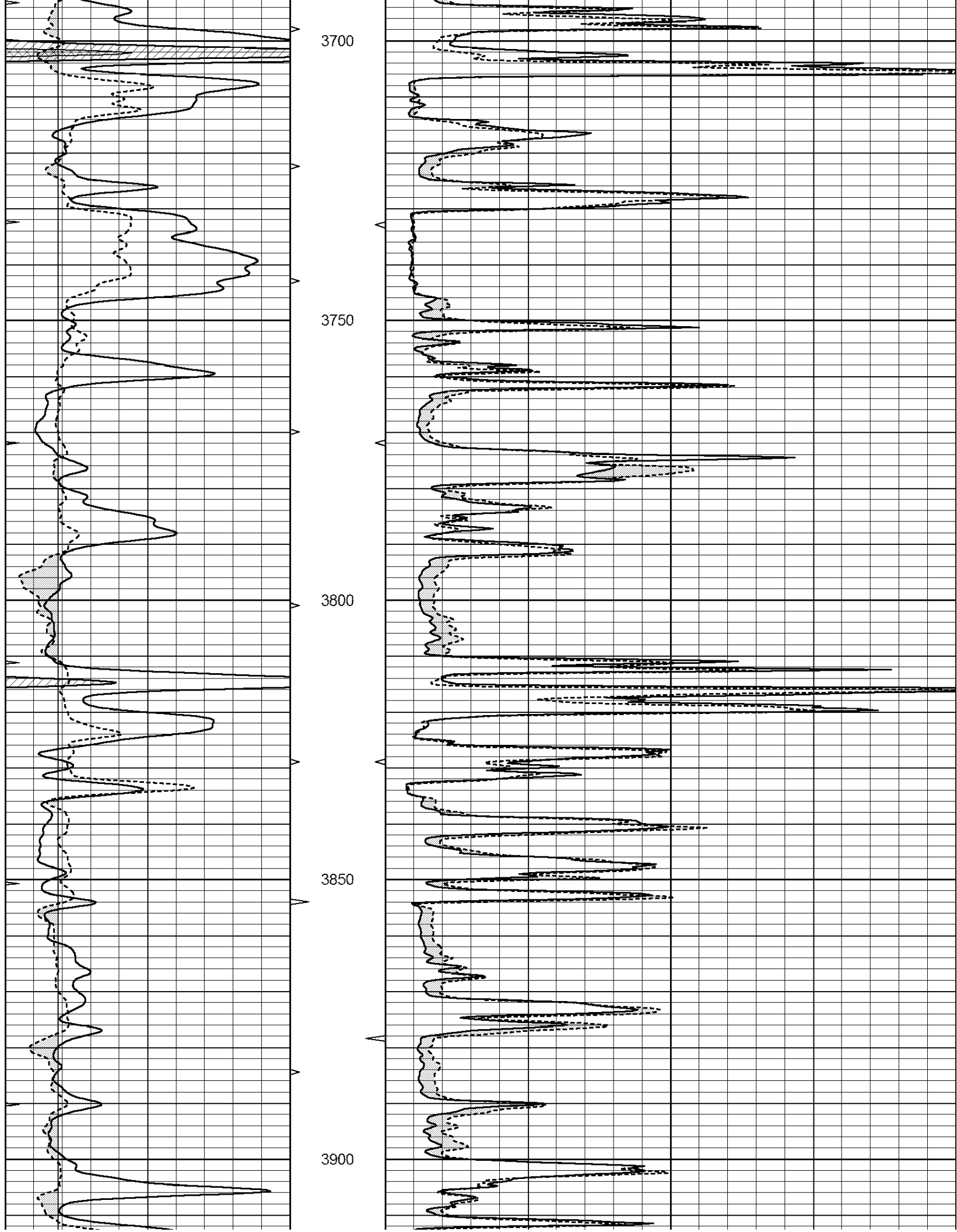
THANK YOU FOR YOUR BUSINESS

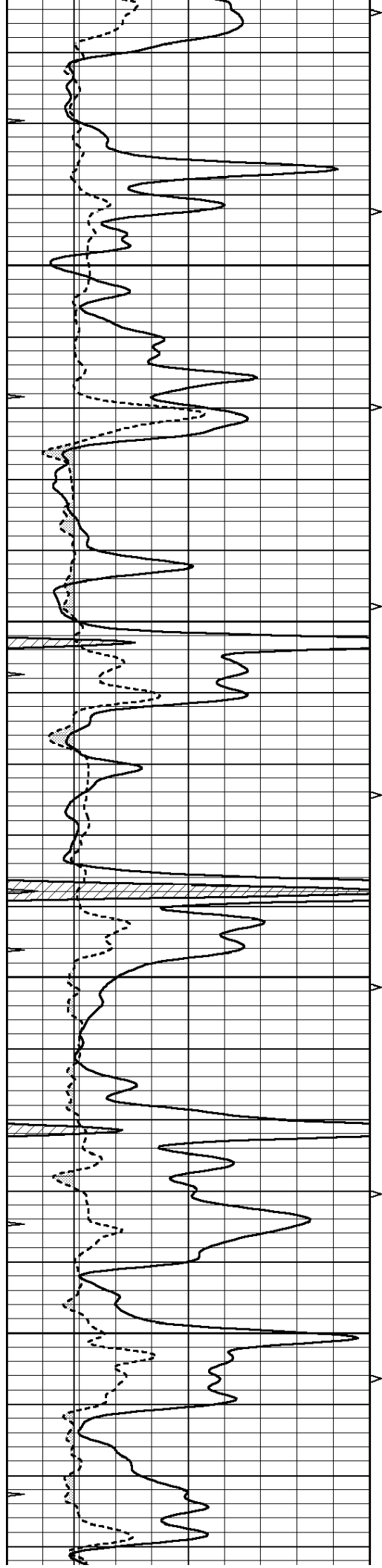
DIRECTIONS : NESS CITY, KS. - 7 MILES SOUTH TO RD 50 - 7 MILES EAST TO RD Z - 1 MILE SOUTH - 1/2 MILE WEST - SOUTH INTO

0	GAMMA RAY (GAPI)	150
6	MELCAL (in)	16
0	MINMK	20

0	MEL1.5 (Ohm-m)	40
0	MEL2.0 (Ohm-m)	40





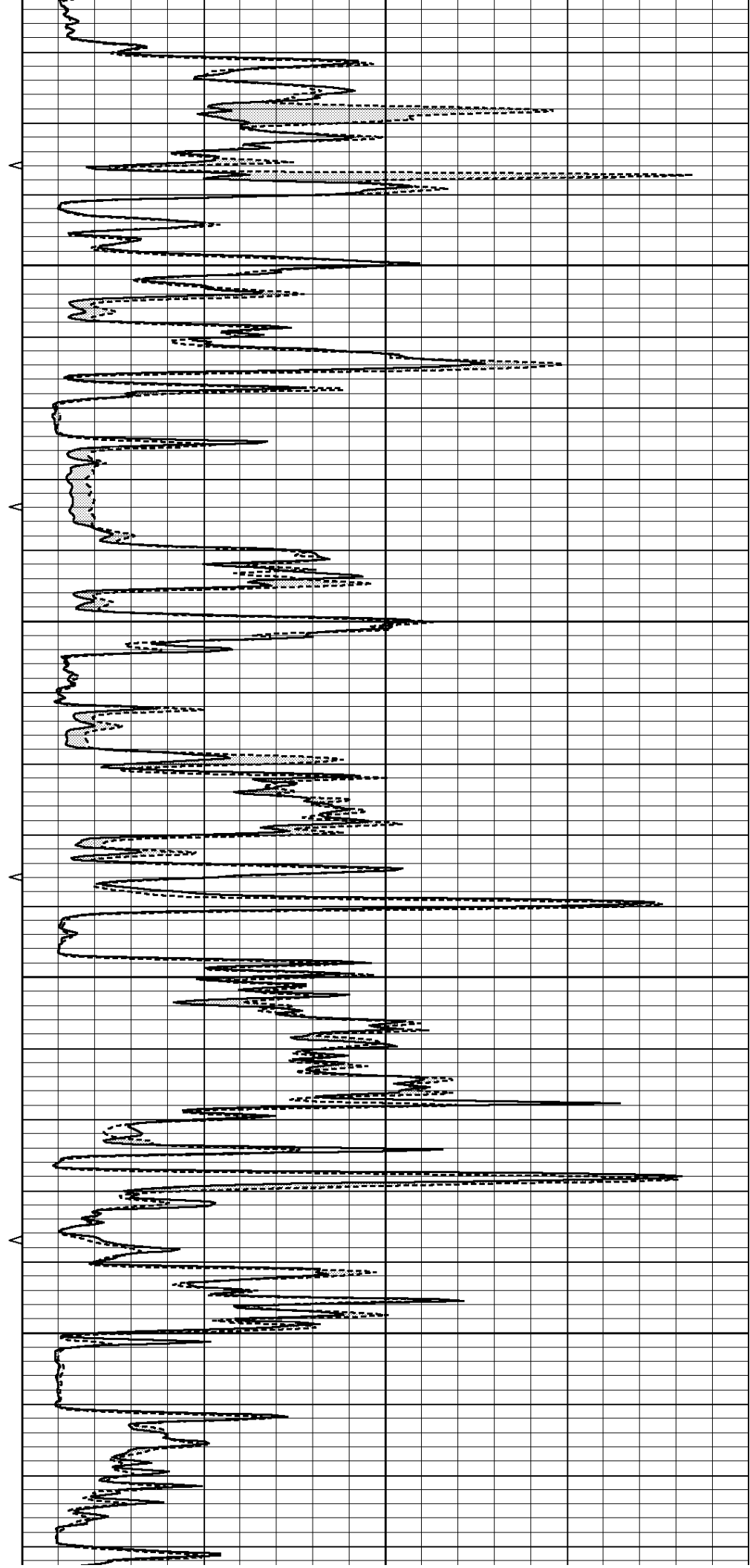


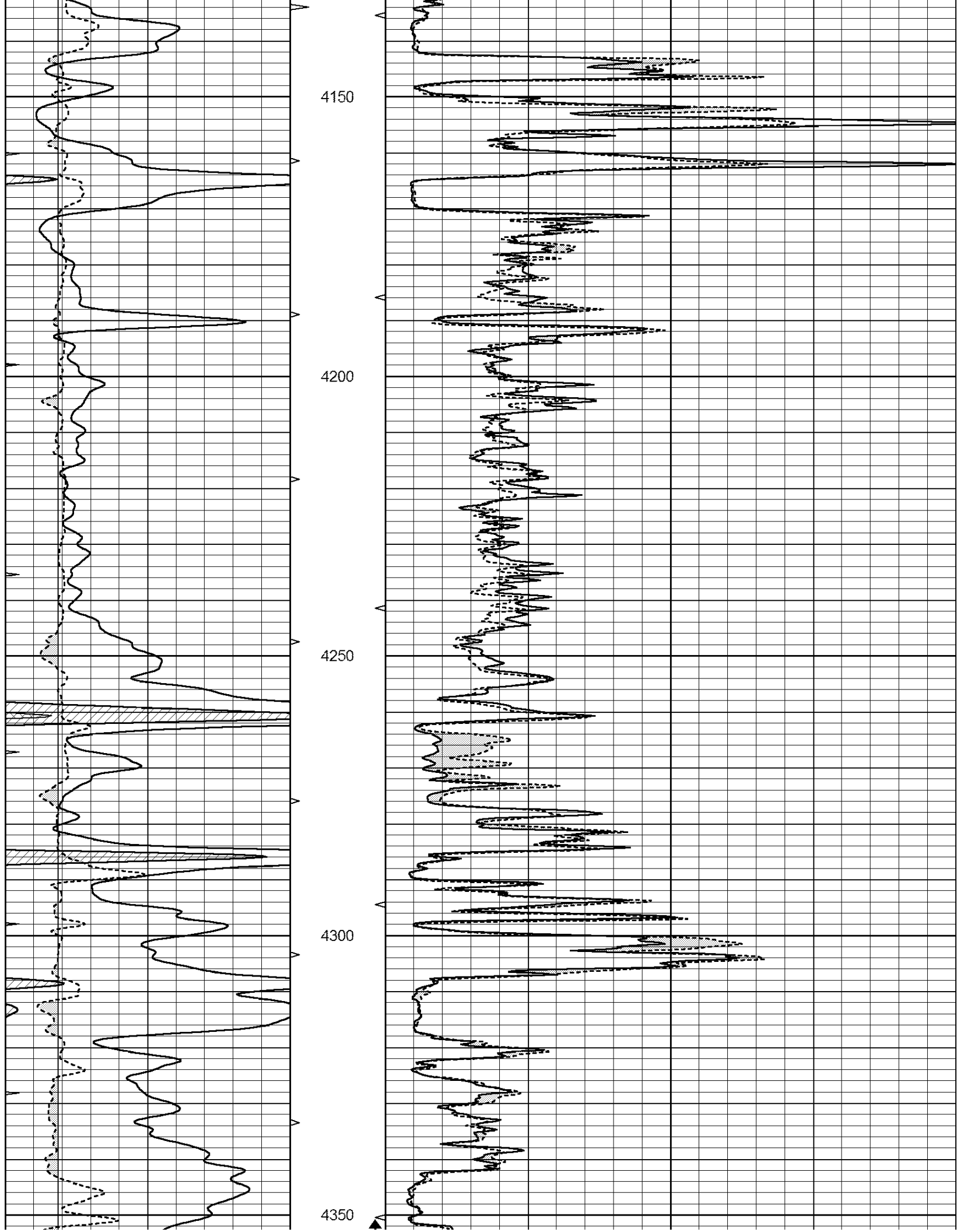
3950

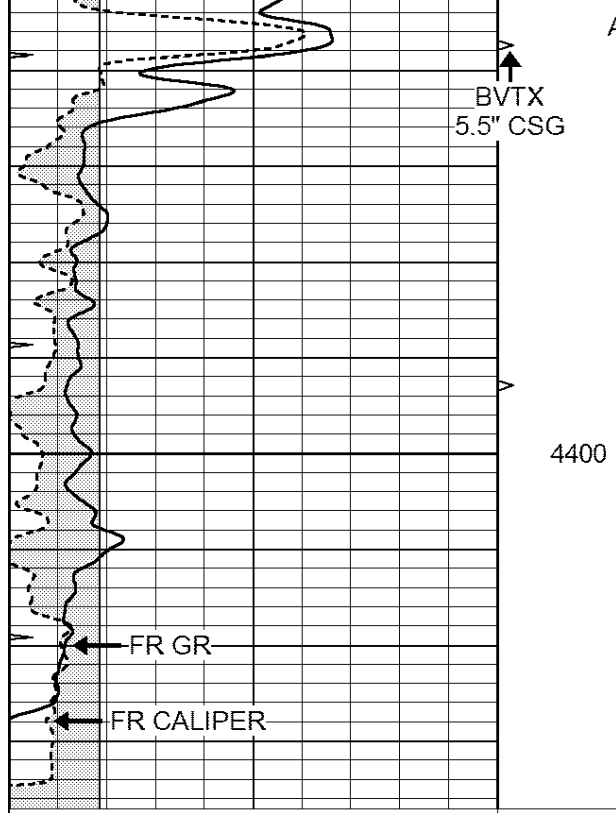
4000

4050

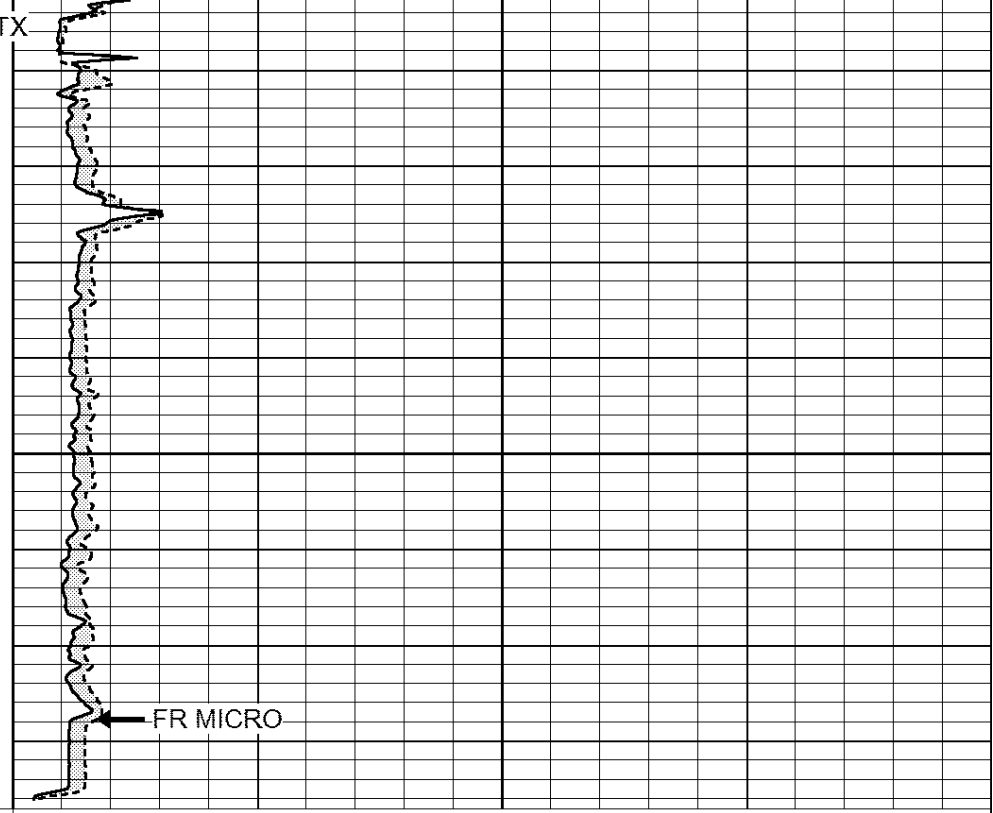
4100







0	GAMMA RAY (GAPI)	150
6	MELCAL (in)	16
0	MINMK	20



0	MEL1.5 (Ohm-m)	40
0	MEL2.0 (Ohm-m)	40

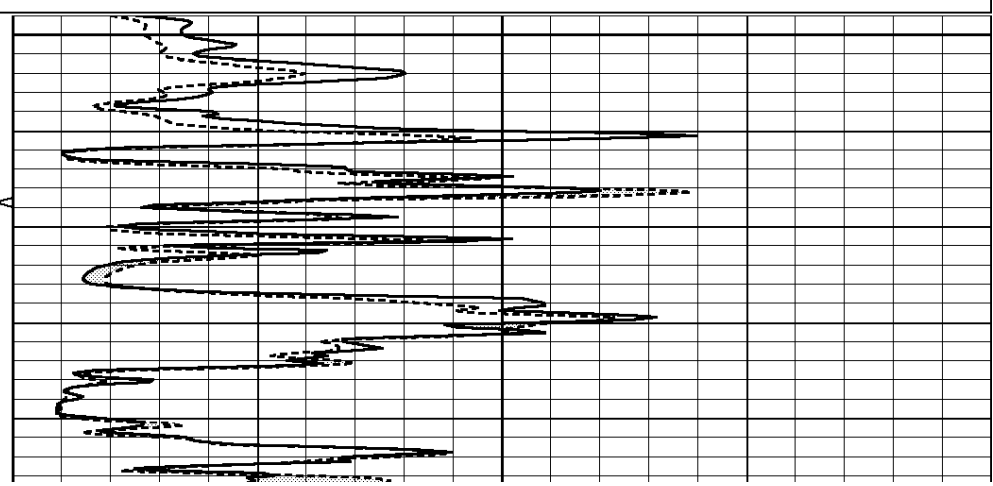
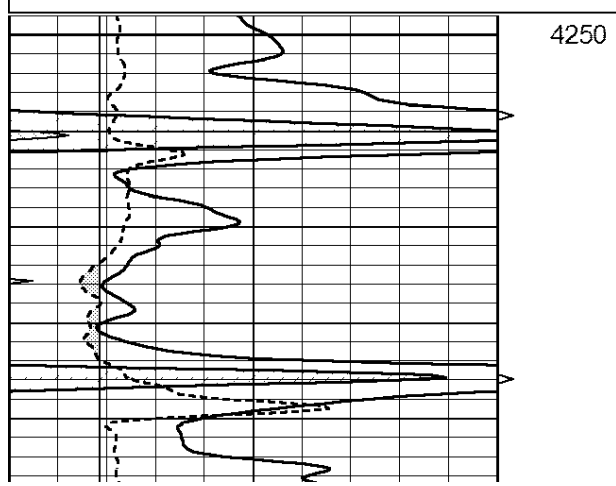


REPEAT SECTION

Database File: 2409ddn.db
 Dataset Pathname: pass6.2
 Presentation Format: _micro
 Dataset Creation: Sat Jul 19 04:07:40 2014 by Calc Open-Cased 090629
 Charted by: Depth in Feet scaled 1:240

0	GAMMA RAY (GAPI)	150
6	MELCAL (in)	16
0	MINMK	20

0	MEL1.5 (Ohm-m)	40
0	MEL2.0 (Ohm-m)	40



References	Low Cal	High Cal
Readings	0.000	20.000
	0.025	1.009

2" Calibration:	Gain=27.398	Offset=1.000
	Low Cal	High Cal
References	0.000	20.000
Readings	0.014	0.802

Gamma Ray Calibration Report

Serial Number:	GR2	
Tool Model:	OPEN	
Performed:	Sun May 11 11:08:27 2014	
Calibrator Value:	200.0	GAPI
Background Reading:	0.0	cps
Calibrator Reading:	740.0	cps
Sensitivity:	0.3800	GAPI/cps