



**COMPLETION
& PRODUCTION
SERVICES CO.**

**COMPENSATED
DENSITY / NEUTRON
LOG**

Company MAI OIL OPERATIONS, INC.
Well MILLER FARMS #2
Field BARRETT
County BARTON State KANSAS

Company MAI OIL OPERATIONS, INC.
Well MILLER FARMS #2
Field BARRETT
County BARTON
State KANSAS

Location: API #: 15-009-2599-00-00
1625' FNL & 330' FEL
N2 - NE - SE - NE
SEC 36 TWP 16S RGE 14W
GROUND LEVEL Elevation 1980
Log Measured From KELLY BUSHING 8' A.G.L.
Drilling Measured From KELLY BUSHING
Other Services
DILMEL
Elevation
K.B. 1988
D.F. 1986
G.L. 1980

Date	7/27/14		
Run Number	ONE		
Depth Driller	3550		
Depth Logger	3549		
Bottom Logged Interval	3525		
Top Log Interval	2400		
Casing Driller	8 5/8 @ 514'		
Casing Logger	516'		
Bit Size	7.875		
Type Fluid in Hole	CHEMICAL MUD		
Density / Viscosity	9.14/2	CHLORIDES 7,300 PPM	
pH / Fluid Loss	9.5/11.6		
Source of Sample	FLOWLINE		
Rm @ Meas. Temp	0.50 @ 89F		
Rmf @ Meas. Temp	0.38 @ 89F		
Rmc @ Meas. Temp	0.60 @ 89F		
Source of Rmf / Rmc	MEASURED		
Rm @ BHT	0.40 @ 112F		
Time Circulation Stopped	2 HOURS		
Time Logger on Bottom			
Maximum Recorded Temperature	112F		
Equipment Number	3802		
Location	HAYS, KS.		
Recorded By	IAN MABB		
Witnessed By	JIM MUSGROVE		

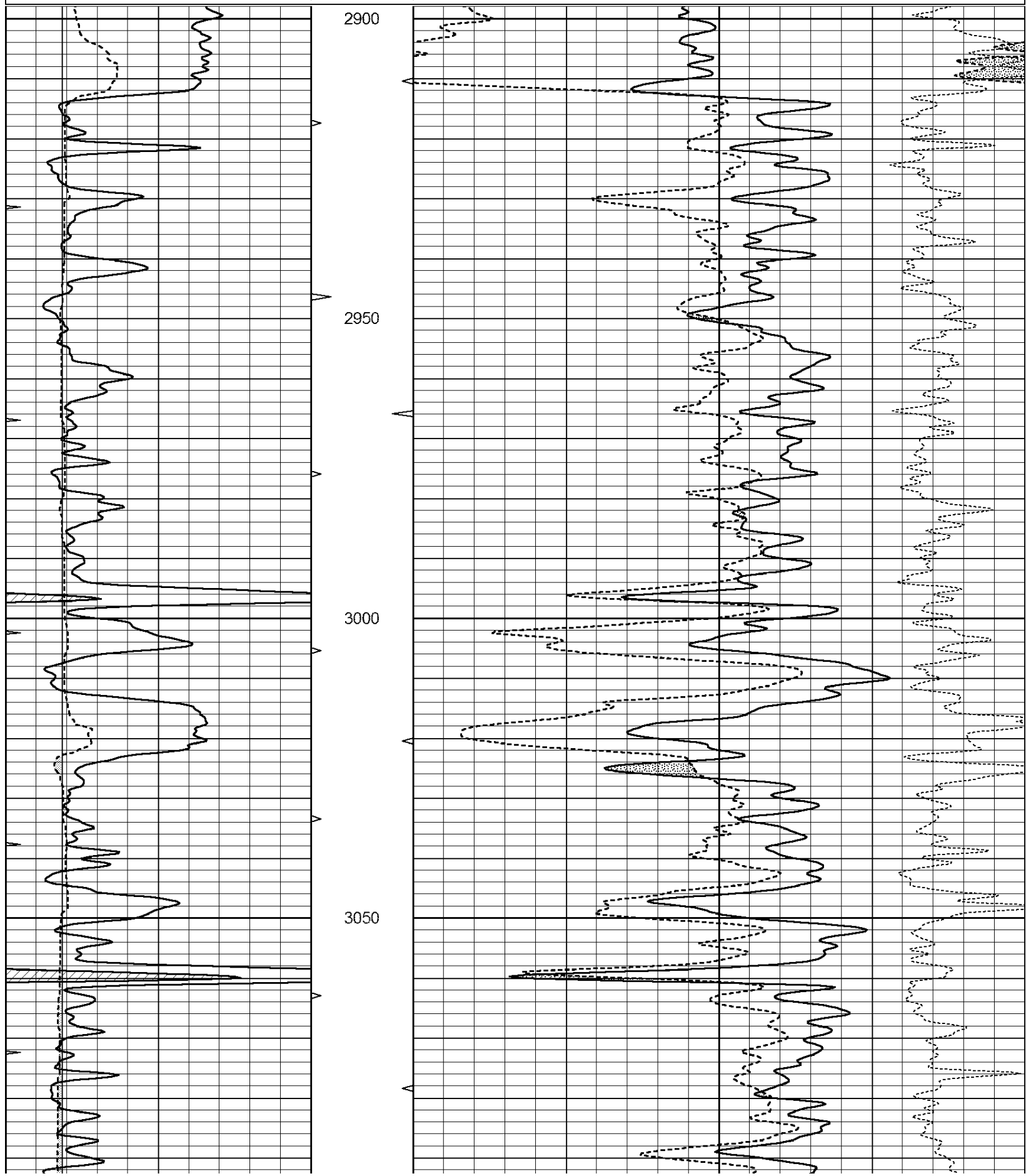
<<< Fold Here >>>

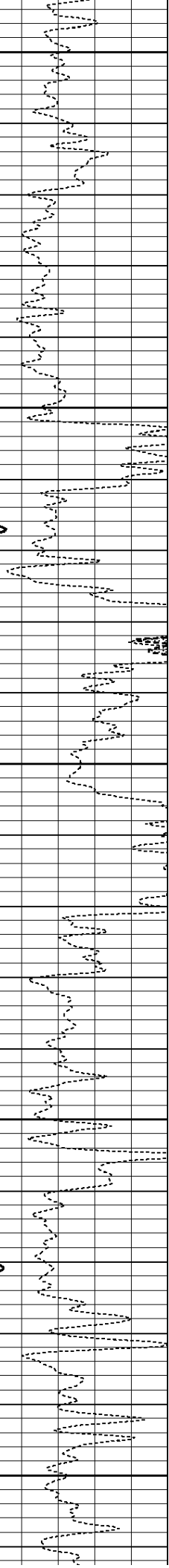
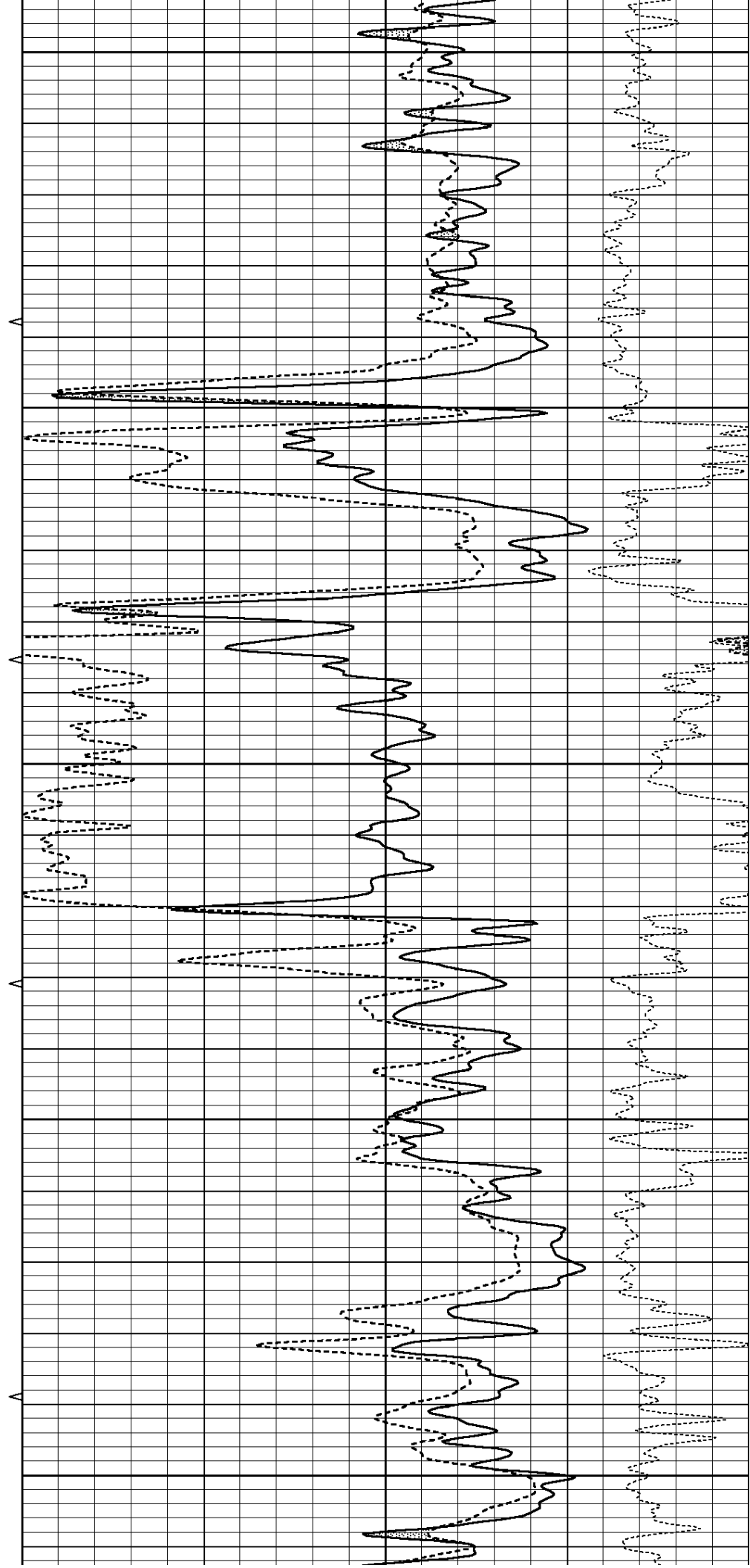
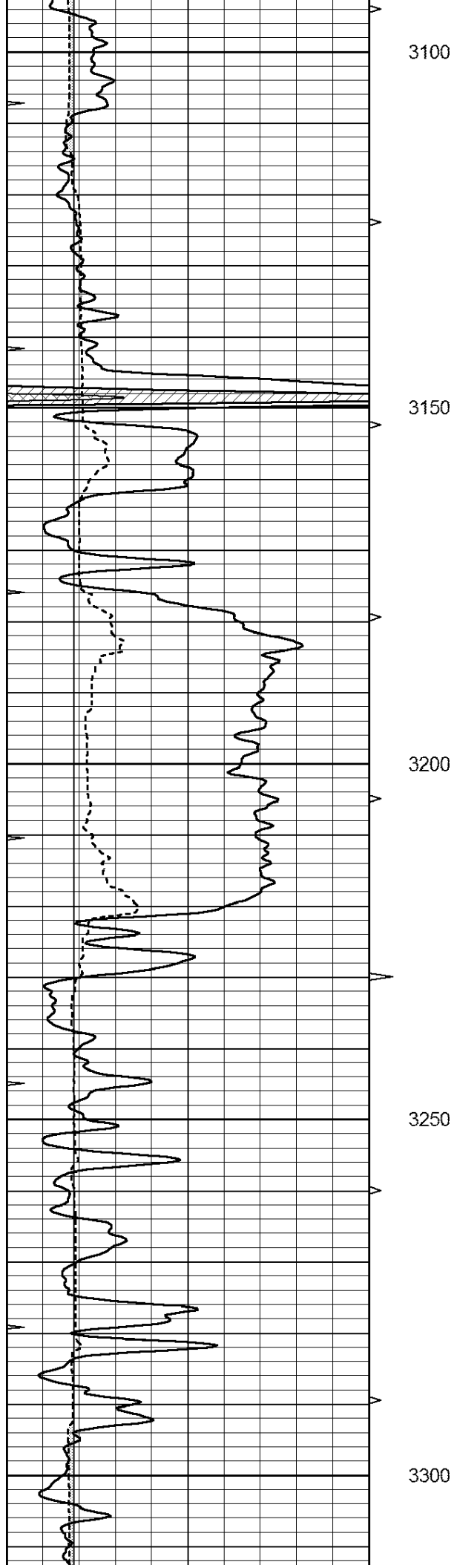
All interpretations are opinions based on inferences from electrical or other measurements and we cannot and do not guarantee the accuracy or correctness of any interpretation, and we shall not, except in the case of gross or willful negligence on our part, be liable or responsible for any loss, costs, damages, or expenses incurred or sustained by anyone resulting from any interpretation made by any of our officers, agents or employees. These interpretations are also subject to our general terms and conditions set out in our current Price Schedule.

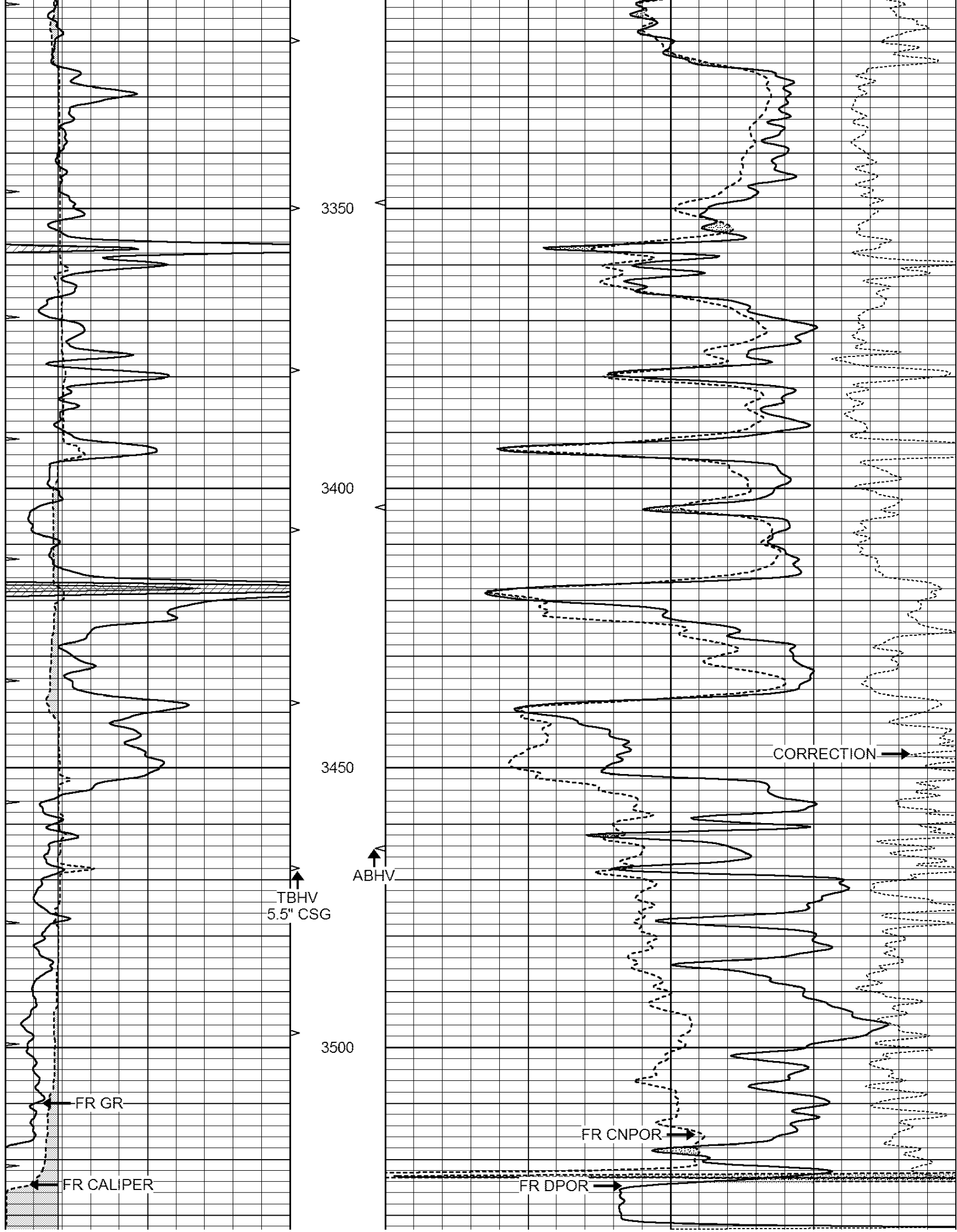
Comments

NABORS COMPLETION & PRODUCTION SERVICES CO.
785 (628 - 6395)
THANK YOU FOR YOUR BUSINESS
DIRECTIONS : SUSANK, KS. - 2 MILES WEST - SOUTH 1 1/2 MILE - WEST INTO

0	GAMMA RAY (GAPI)	150	ABHV	30	COMPENSATED DENSITY (pu)	-10
6	CALIPER (in)	16	10 (ft3)	0 30	COMPENSATED NEUTRON (pu)	-10
0	MINMK	20	TBHV		-0.25 CORRECTION (g/cc)	0.25
			0 (ft3)	10		







2.71 LIMESTONE MATRIDX

LTD 3549
355U

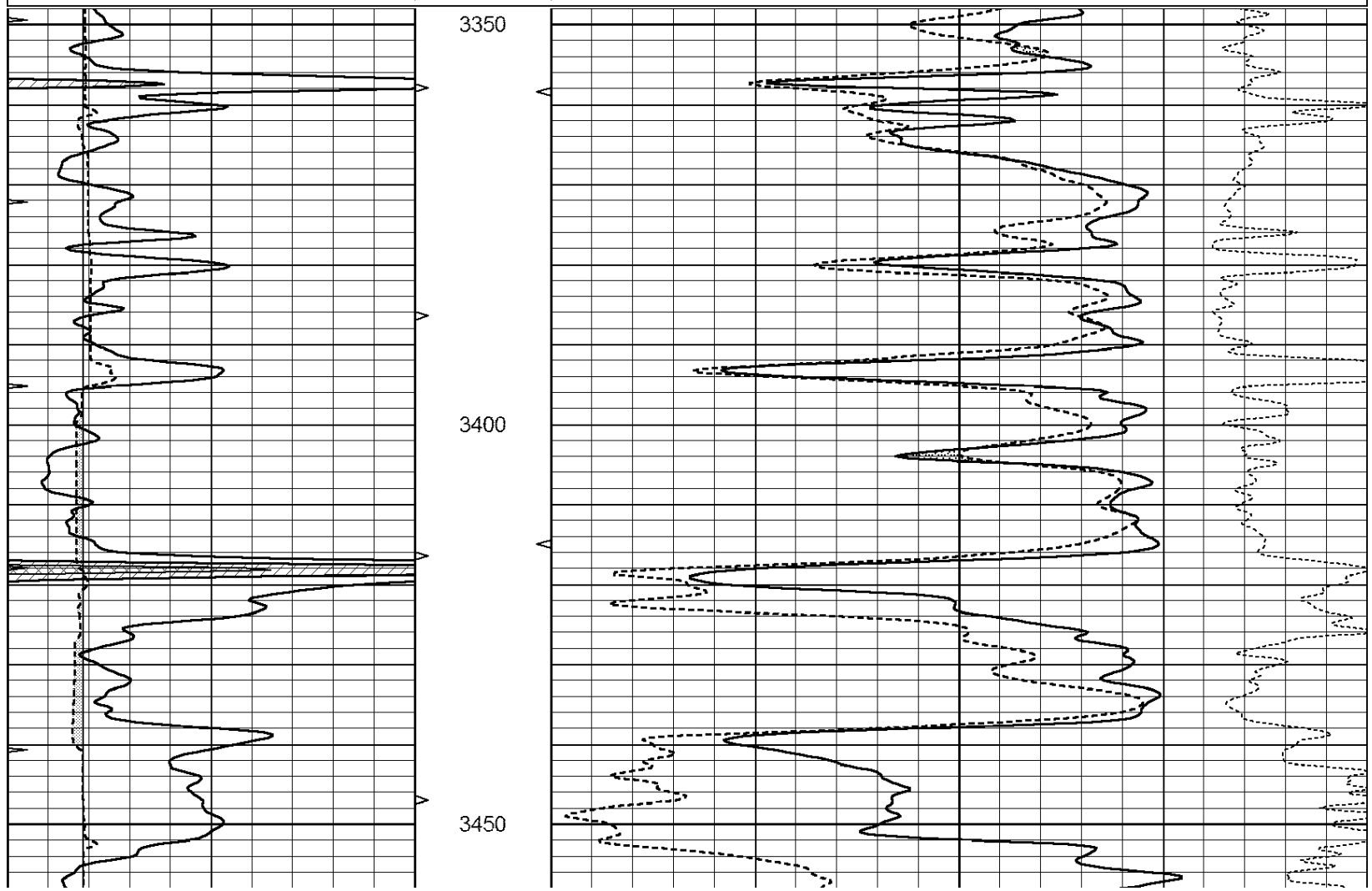
0	GAMMA RAY (GAPI)	150	ABHV	30	COMPENSATED DENSITY (pu)	-10
6	CALIPER (in)	16	10 (ft3)	0 30	COMPENSATED NEUTRON (pu)	-10
0	MINMK	20	TBHV		-0.25 CORRECTION (g/cc)	0.25
			0 (ft3)	10		



REPEAT SECTION

Database File: 24713ddn.db
 Dataset Pathname: pass2.1.4
 Presentation Format: _den_neu
 Dataset Creation: Sun Jul 27 17:06:27 2014 by Calc Open-Cased 090629
 Charted by: Depth in Feet scaled 1:240

0	GAMMA RAY (GAPI)	150	ABHV	30	COMPENSATED DENSITY (pu)	-10
6	CALIPER (in)	16	10 (ft3)	0 30	COMPENSATED NEUTRON (pu)	-10
0	MINMK	20	TBHV		-0.25 CORRECTION (g/cc)	0.25
			0 (ft3)	10		



	<u>Zero</u>	<u>Cal</u>		<u>Zero</u>	<u>Cal</u>		<u>m'</u>	<u>b'</u>
Deep	135384.000	27094.500	mmho/m	135400.000	27082.400	mmho/m	1.000	-19.259
Medium	-47330.100	-9381.740	mmho/m	-47327.100	-9389.280	mmho/m	1.000	-10.154
LL3		7.322	V		1400.000	Ohm-m		
		0.038	V		20.000	Ohm-m		
		-7.273	V		4000.000	mmho-m		

After Survey Verification								
	<u>Readings</u>			<u>Targets</u>			<u>Results</u>	
	<u>Zero</u>	<u>Cal</u>		<u>Zero</u>	<u>Cal</u>		<u>m'</u>	<u>b'</u>
Deep	0.000	0.000	mmho/m	135384.000	27094.500	mmho/m	1.000	0.000
Medium	0.000	0.000	mmho/m	-47330.100	-9381.740	mmho/m	1.000	0.000
LL3		0.000	Ohm-m		1400.000	Ohm-m		
		0.000	Ohm-m		20.000	Ohm-m		
		0.000	mmho-m		4000.000	mmho-m		

Compensated Density Calibration Report

Serial-Model: GEAR5-GEARHART
 Source / Verifier: 147 / 147
 Master Calibration Performed: Fri Jul 04 19:27:51 2014
 Before Survey Verification Performed:
 After Survey Verification Performed:

Master Calibration							
	<u>Density</u>			<u>Far Detector</u>		<u>Near Detector</u>	
Magnesium	1.710	g/cc		943.83		576.01	cps
Aluminum	2.590	g/cc		212.01		399.19	cps
	Spine Angle = 76.20			Density/Spine Ratio = 0.572			
	<u>Size</u>			<u>Reading</u>			
Small Ring	8.40	in		1.64	V		
Large Ring	14.00	in		2.93	V		

Before Survey Verification							
	<u>Target</u>			<u>Measured</u>			
			g/cc				g/cc
			g/cc				g/cc
			g/cc				g/cc

After Survey Verification							
	<u>Target</u>			<u>Measured</u>			
			g/cc				g/cc
			g/cc				g/cc
			g/cc				g/cc

Compensated Neutron Calibration Report

Serial Number: 080620
 Tool Model: Probe

PRE-SURVEY VERIFICATION							
	<u>Detector</u>		<u>Readings</u>		<u>Measured</u>		<u>Target</u>
	Short Space		cps				
	Long Space		cps		pu		pu

POST-SURVEY VERIFICATION

Detector	Readings	Measured	Target
Short Space	cps		
Long Space	cps	pu	pu

Gamma Ray Calibration Report

Serial Number:	46001	
Tool Model:	Probe1	
Performed:	Sun Jul 27 16:50:31 2014	
Calibrator Value:	1.0	GAPI
Background Reading:	0.0	cps
Calibrator Reading:	1.0	cps
Sensitivity:	0.2300	GAPI/cps