



**COMPLETION
& PRODUCTION
SERVICES CO.**

**MICRO
LOG**

Company MAI OIL OPERATIONS, INC.
Well MILLER FARMS #2
Field BARRETT
County BARTON State KANSAS

Company MAI OIL OPERATIONS, INC.
Well MILLER FARMS #2
Field BARRETT
County BARTON
State KANSAS

Location: API #: 15-009-2599-00-00
1625' FNL & 330' FEL
N2 - NE - SE - NE
SEC 36 TWP 16S RGE 14W
Permanent Datum GROUND LEVEL Elevation 1980
Log Measured From KELLY BUSHING 8' A.G.L.
Drilling Measured From KELLY BUSHING
Other Services
CNL/CDL
DIL
Elevation
K.B. 1988
D.F. 1986
G.L. 1980

Date	7/27/14		
Run Number	TWO		
Depth Driller	3550		
Depth Logger	3549		
Bottom Logged Interval	3547		
Top Log Interval	2900		
Casing Driller	8 5/8 @ 514'		
Casing Logger	516'		
Bit Size	7.875		
Type Fluid in Hole	CHEMICAL MUD		
Density / Viscosity	9.14/2	CHLORIDES 7.300 PPM	
pH / Fluid Loss	9.5/11.6		
Source of Sample	FLOWLINE		
Rm @ Meas. Temp	0.50 @ 89F		
Rmf @ Meas. Temp	0.38 @ 89F		
Rmc @ Meas. Temp	0.60 @ 89F		
Source of Rmf / Rmc	MEASURED		
Rm @ BHT	0.40 @ 112F		
Time Circulation Stopped	2 HOURS		
Time Logger on Bottom			
Maximum Recorded Temperature	112F		
Equipment Number	3802		
Location	HAYS, KS.		
Recorded By	IAN MABB		
Witnessed By	JIM MUSGROVE		

<<< Fold Here >>>

All interpretations are opinions based on inferences from electrical or other measurements and we cannot and do not guarantee the accuracy or correctness of any interpretation, and we shall not, except in the case of gross or willful negligence on our part, be liable or responsible for any loss, costs, damages, or expenses incurred or sustained by anyone resulting from any interpretation made by any of our officers, agents or employees. These interpretations are also subject to our general terms and conditions set out in our current Price Schedule.

Comments

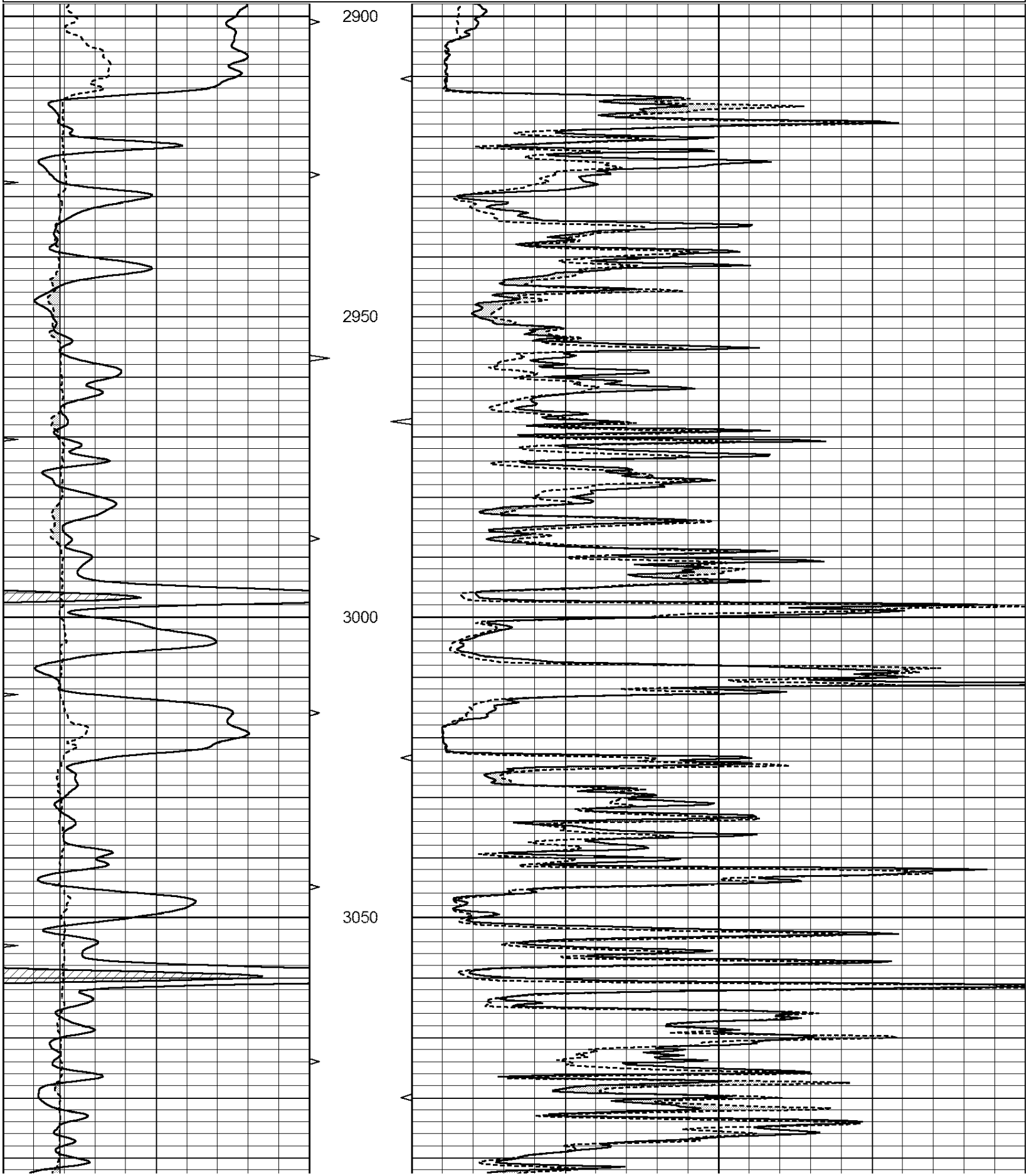
NABORS COMPLETION & PRODUCTION SERVICES CO.
785 (628 - 6395)
THANK YOU FOR YOUR BUSINESS
DIRECTIONS : SUSANK, KS. - 2 MILES WEST - SOUTH 1 1/2 MILE - WEST INTO

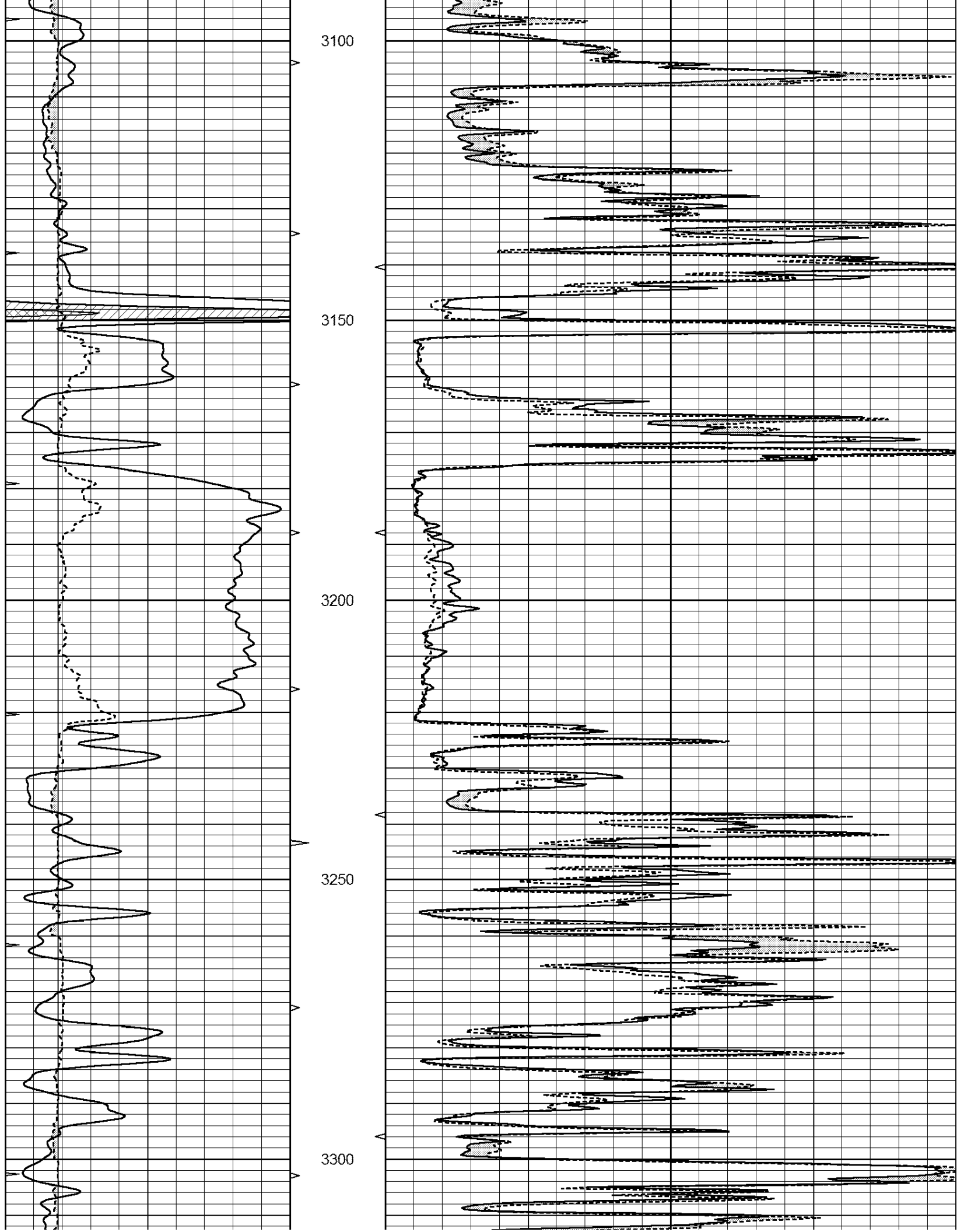
Charted by:

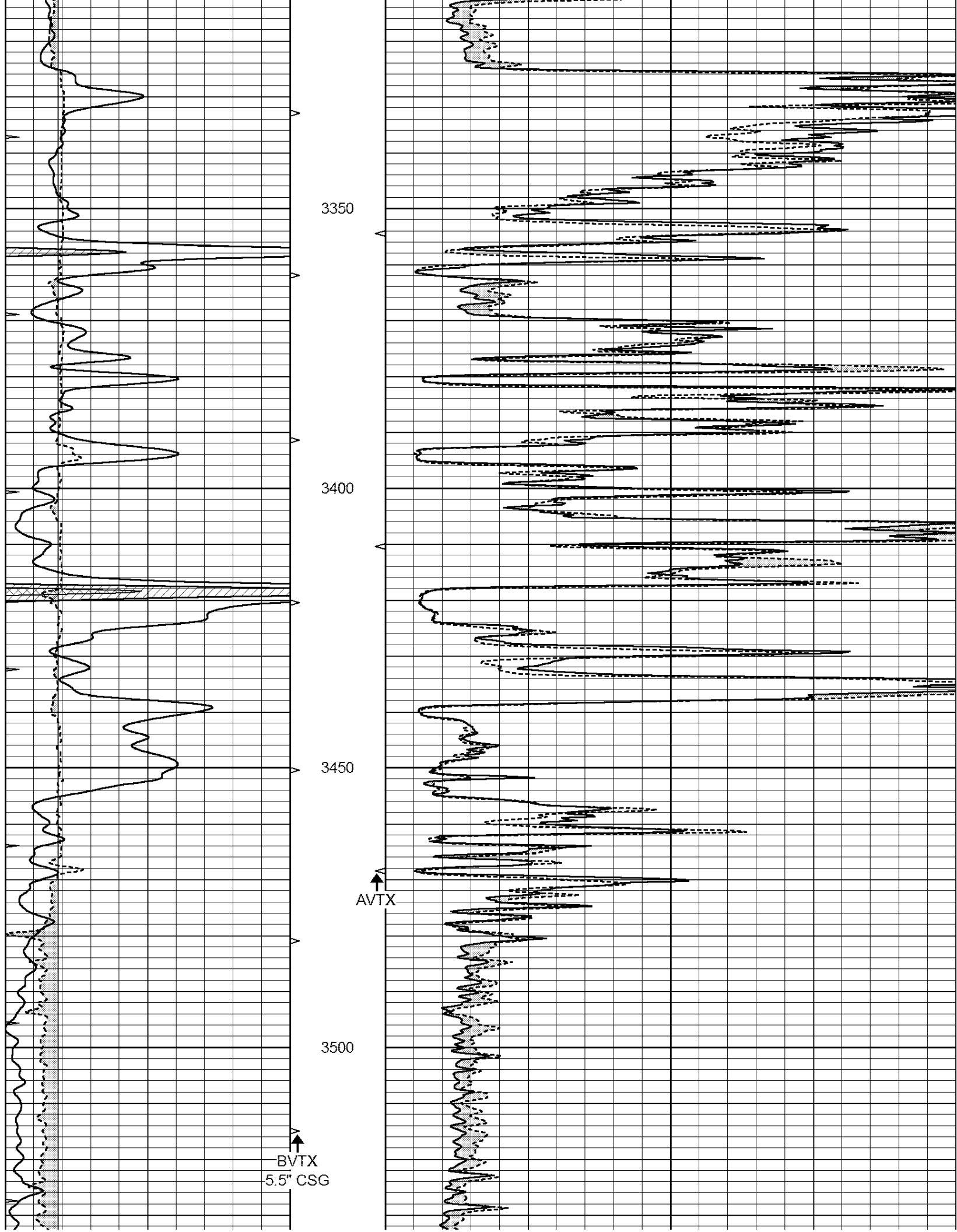
Depth in Feet scaled 1:240

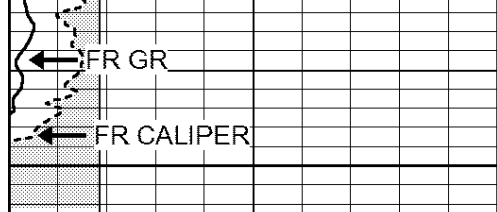
0	GAMMA RAY (GAPI)	150
6	MELCAL (in)	16
0	MINMK	20

0	MEL1.5 (Ohm-m)	40
0	MEL2.0 (Ohm-m)	40

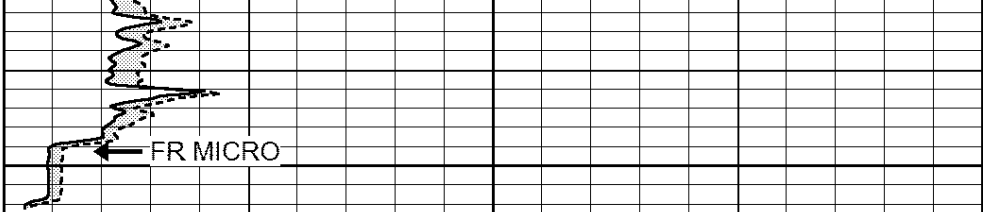








LTD 3549
355U



0	GAMMA RAY (GAPI)	150
6	MELCAL (in)	16
0	MINMK	20

0	MEL1.5 (Ohm-m)	40
0	MEL2.0 (Ohm-m)	40

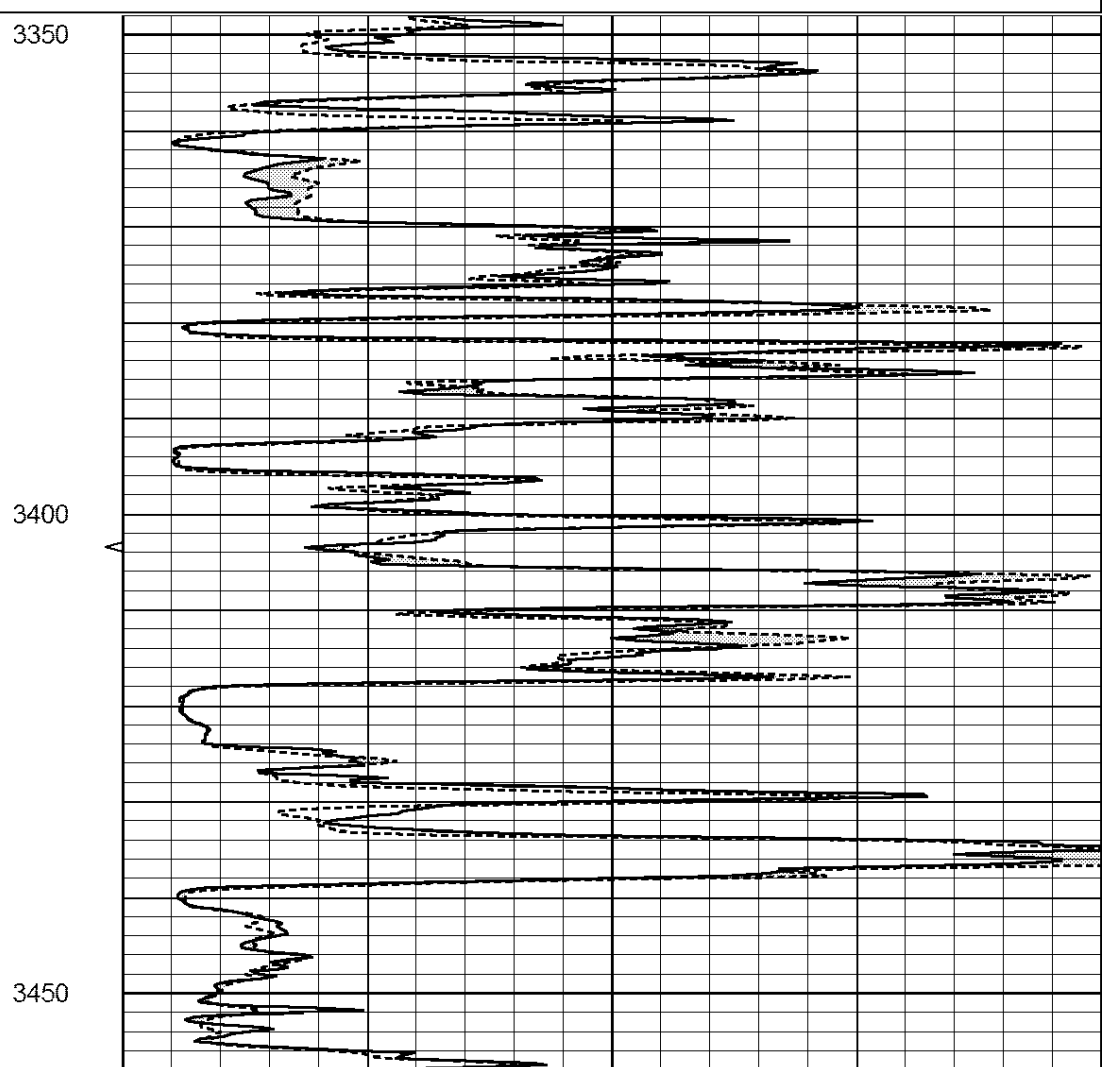
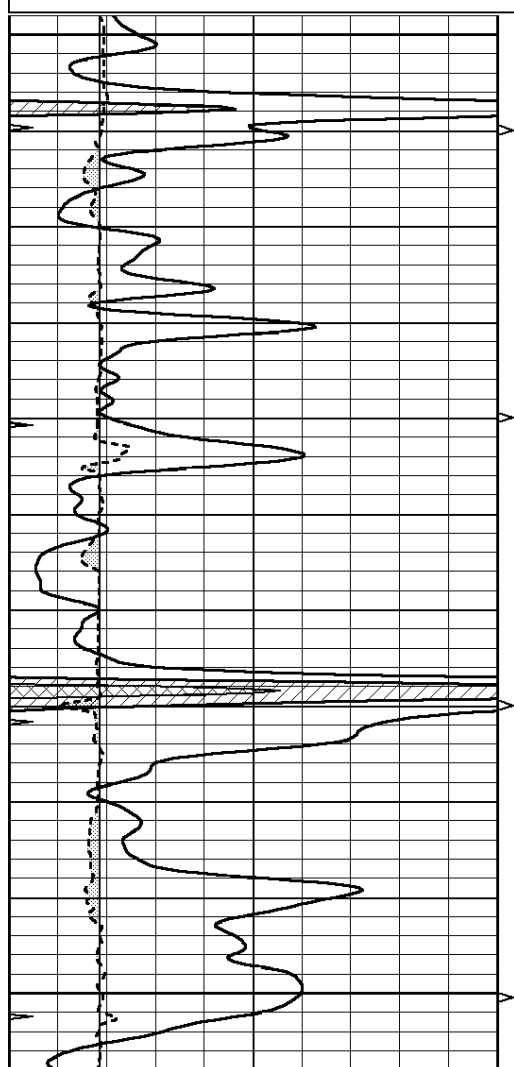


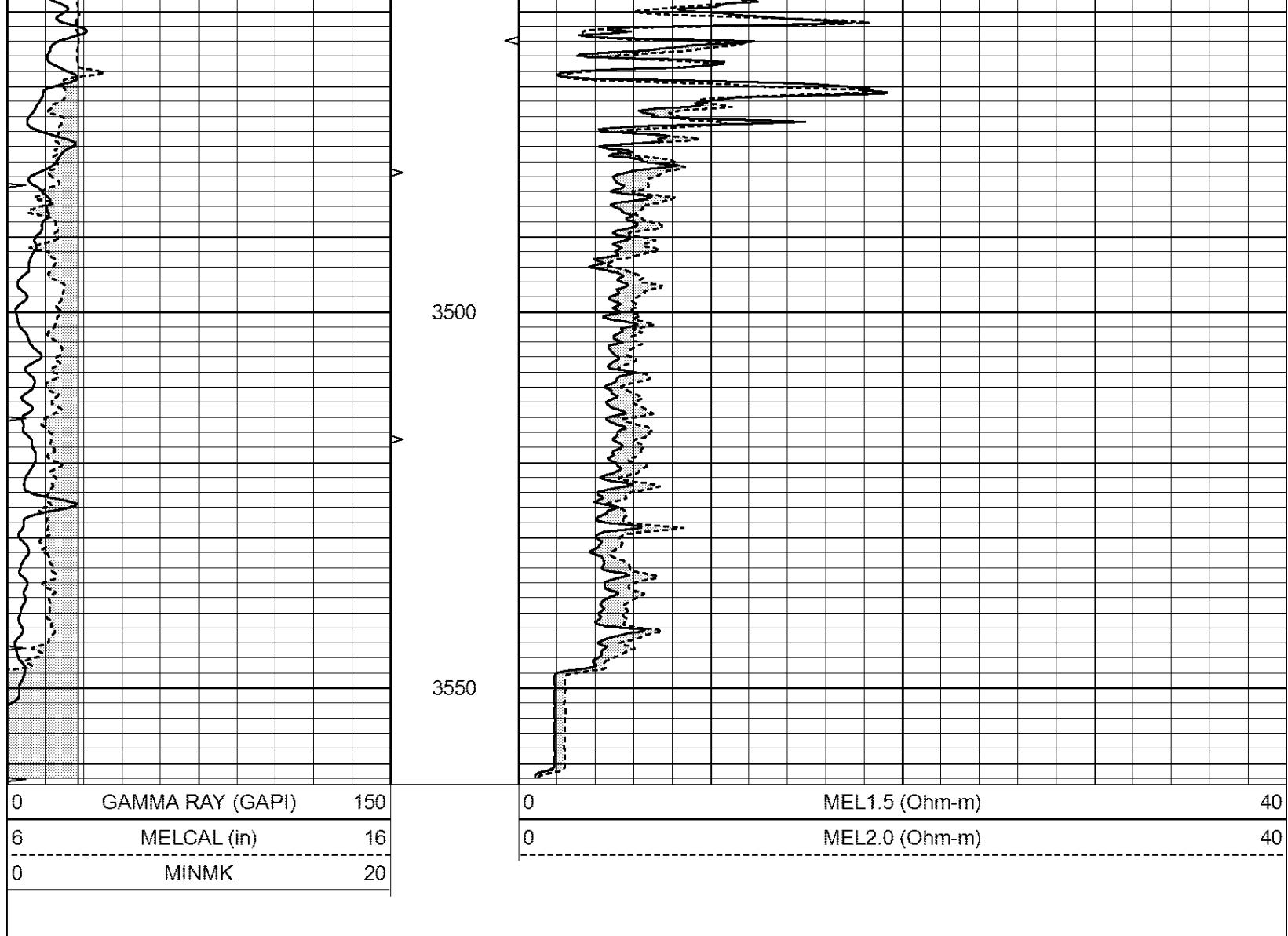
REPEAT SECTION

Database File: 24713ddn.db
 Dataset Pathname: pass5.1
 Presentation Format: _micro
 Dataset Creation: Sun Jul 27 19:14:14 2014 by Calc Open-Cased 090629
 Charted by: Depth in Feet scaled 1:240

0	GAMMA RAY (GAPI)	150
6	MELCAL (in)	16
0	MINMK	20

0	MEL1.5 (Ohm-m)	40
0	MEL2.0 (Ohm-m)	40





Calibration Report

Database File: 24713ddn.db
 Dataset Pathname: pass6.1
 Dataset Creation: Sun Jul 27 19:26:39 2014 by Calc Open-Cased 090629

MICRO Calibration Report

Serial Number:	MICRO5	
Tool Model:	PROBE	
Performed:	Sat Jul 26 19:51:23 2014	
Caliper Calibration:	Gain=3.536	Offset=-5.700
References	Low Cal 6.200	High Cal 15.000
Readings	3.737	5.660
1.5" Calibration:	Gain=20.334	Offset=0.850
References	Low Cal 0.000	High Cal 20.000
Readings	0.025	1.009
2" Calibration:	Gain=25.398	Offset=1.000
References	Low Cal 0.000	High Cal 20.000
Readings	0.014	0.802

Gamma Ray Calibration Report

Serial Number:	GR2	
Tool Model:	OPEN	
Performed:	Fri Jul 25 11:27:36 2014	
Calibrator Value:	200.0	GAPI
Background Reading:	0.0	cps
Calibrator Reading:	740.0	cps
Sensitivity:	0.3800	GAPI/cps