



**COMPLETION  
& PRODUCTION  
SERVICES CO.**

**MICRO  
LOG**

Company VINCENT OIL CORP.  
Well MARFAM #3-32  
Field FAGER EAST  
County FORD  
State KANSAS

Company VINCENT OIL CORPORATION  
Well MARFAM #3-32  
Field FAGER EAST  
County FORD State KANSAS

Location: API # : 15-057-20935-0000  
990' FNL & 2080' FWL  
W/2 - SE - NE - NW  
SEC 32 TWP 29S RGE 24W  
Permanent Datum GROUND LEVEL Elevation 2573  
Log Measured From KELLY BUSHING 12' A.G.L.  
Drilling Measured From KELLY BUSHING  
Other Services  
CDL/CNL/PE  
DIL/SON  
Elevation  
K.B. 2585  
D.F. 2583  
G.L. 2573

Date	7/18/14
Run Number	TWO
Depth Driller	5467
Depth Logger	5467
Bottom Logged Interval	5449
Top Log Interval	4250
Casing Driller	8 5/8" @ 648
Casing Logger	646
Bit Size	7 7/8"
Type Fluid in Hole	CHEMICAL MUD
Density / Viscosity	9.3/55
pH / Fluid Loss	10.5/9.6
Source of Sample	FLOWLINE
Rim @ Meas. Temp	0.40 @ 83F
Rmf @ Meas. Temp	0.30 @ 83F
Rmc @ Meas. Temp	0.48 @ 83F
Source of Rmf / Rmc	MEASUREMENT
Rim @ BHT	0.26 @ 129F
Time Circulation Stopped	2 HOURS
Time Logger on Bottom	
Maximum Recorded Temperature	129F
Equipment Number	4854
Location	HAYS, KANSAS
Recorded By	JEFF GRONEMEG
Witnessed By	JIM HALL

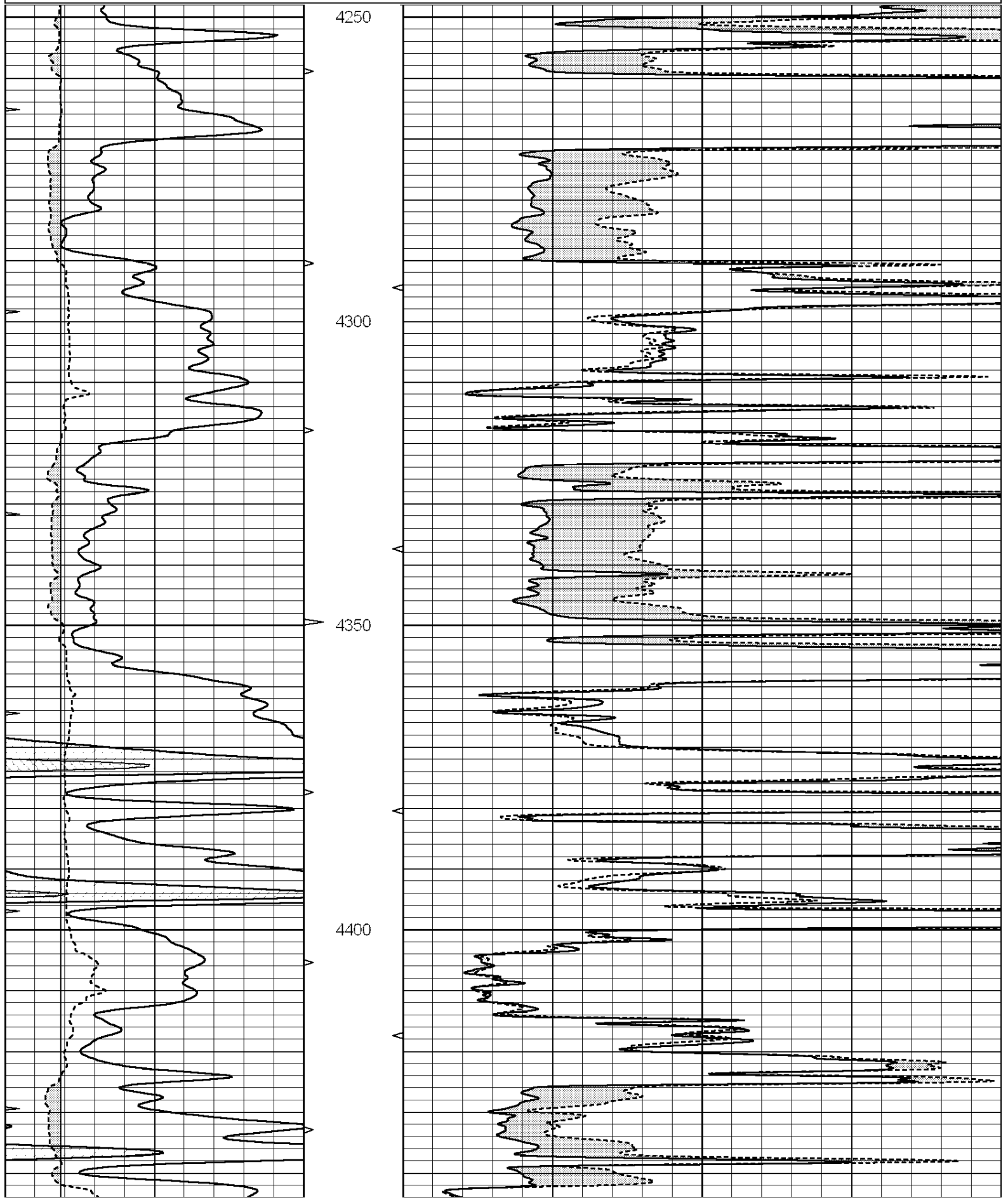
<<< Fold Here >>>

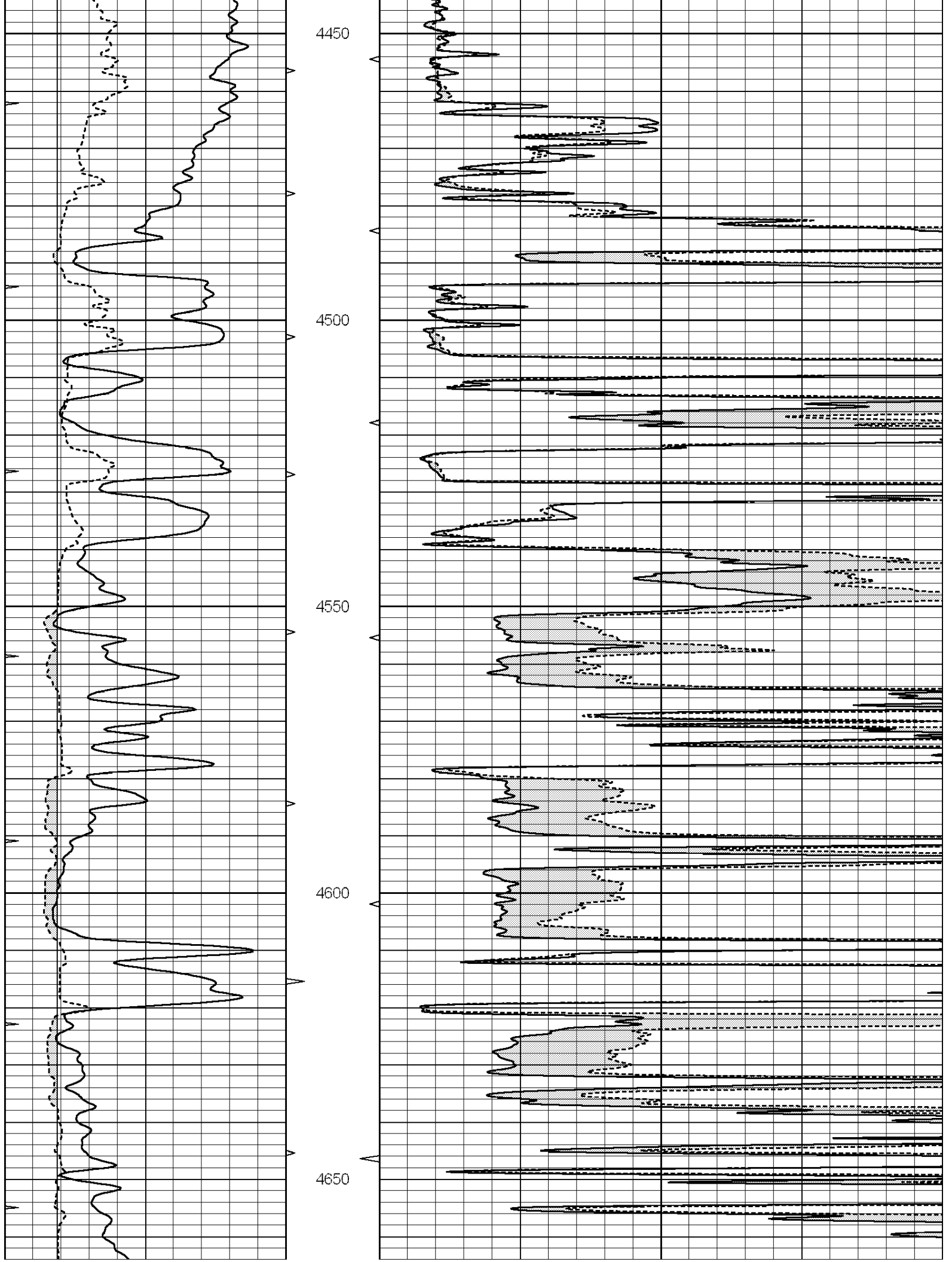
All interpretations are opinions based on inferences from electrical or other measurements and we cannot and do not guarantee the accuracy or correctness of any interpretation, and we shall not, except in the case of gross or willful negligence on our part, be liable or responsible for any loss, costs, damages, or expenses incurred or sustained by anyone resulting from any interpretation made by any of our officers, agents or employees. These interpretations are also subject to our general terms and conditions set out in our current Price Schedule.

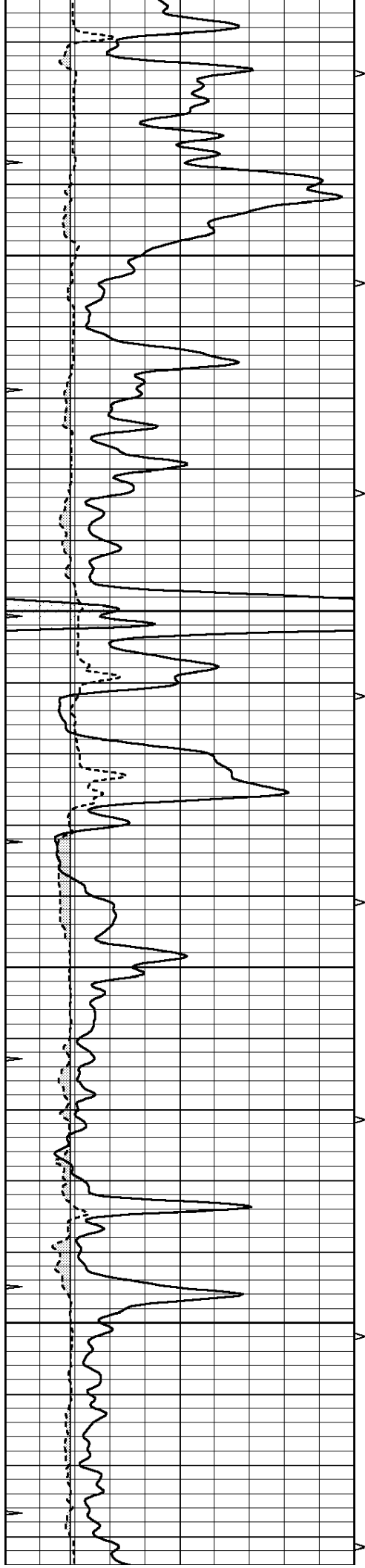
**Comments**

**THANK YOU FOR USING "NABORS" HAYS, KANSAS (785) 628-6395  
DIRECTIONS  
DODGE CITY, KS - SOUTH TO YUCCA RD - 2 1/4 MILES EAST  
SOUTH INTO**

0	GAMMA RAY (GAPI)	150	ABHV	0	MEL1.5 (Ohm-m)	20
6	CALIPER (in)	16	10 (ft3)	0	MEL2.0 (Ohm-m)	20
0	MINMK	20	TBHV			
			0 (ft3)	10		





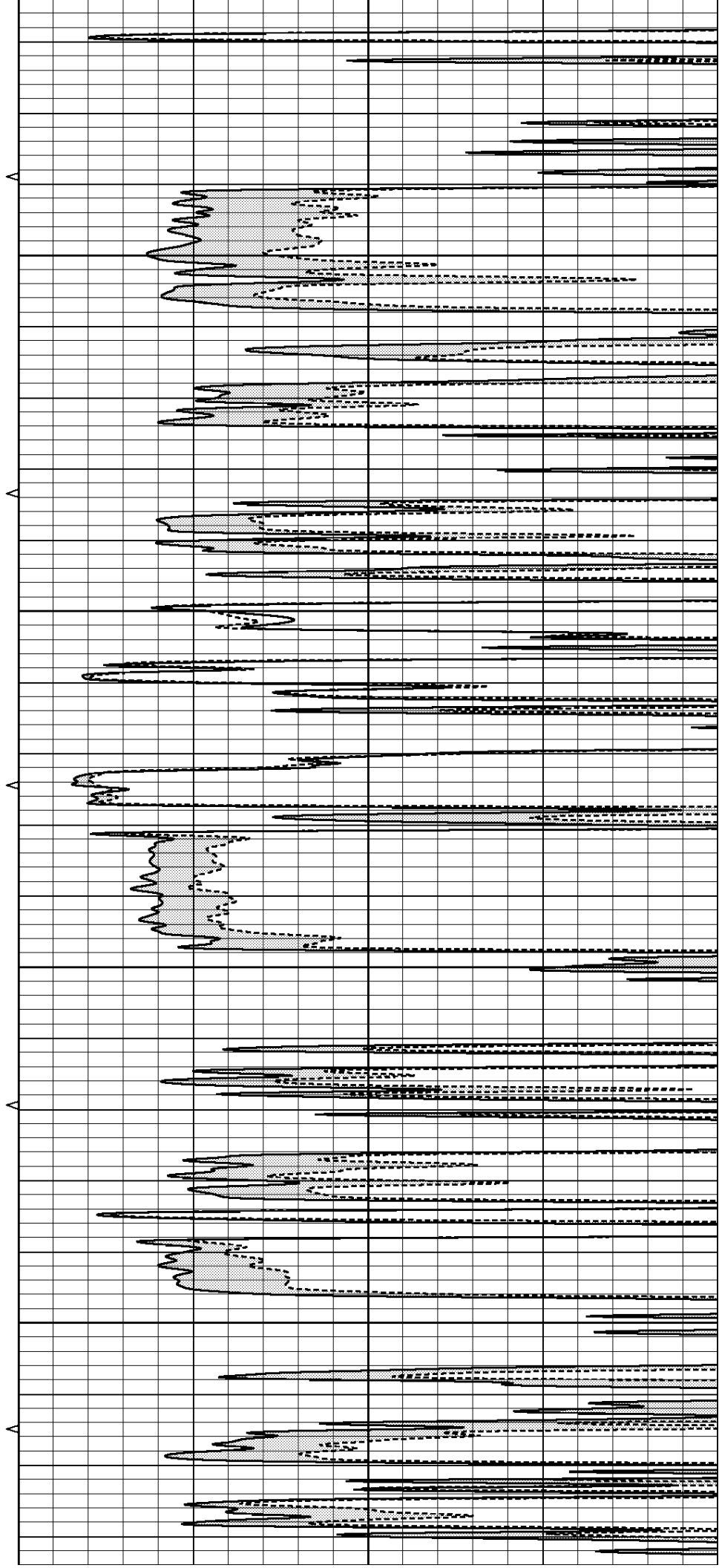


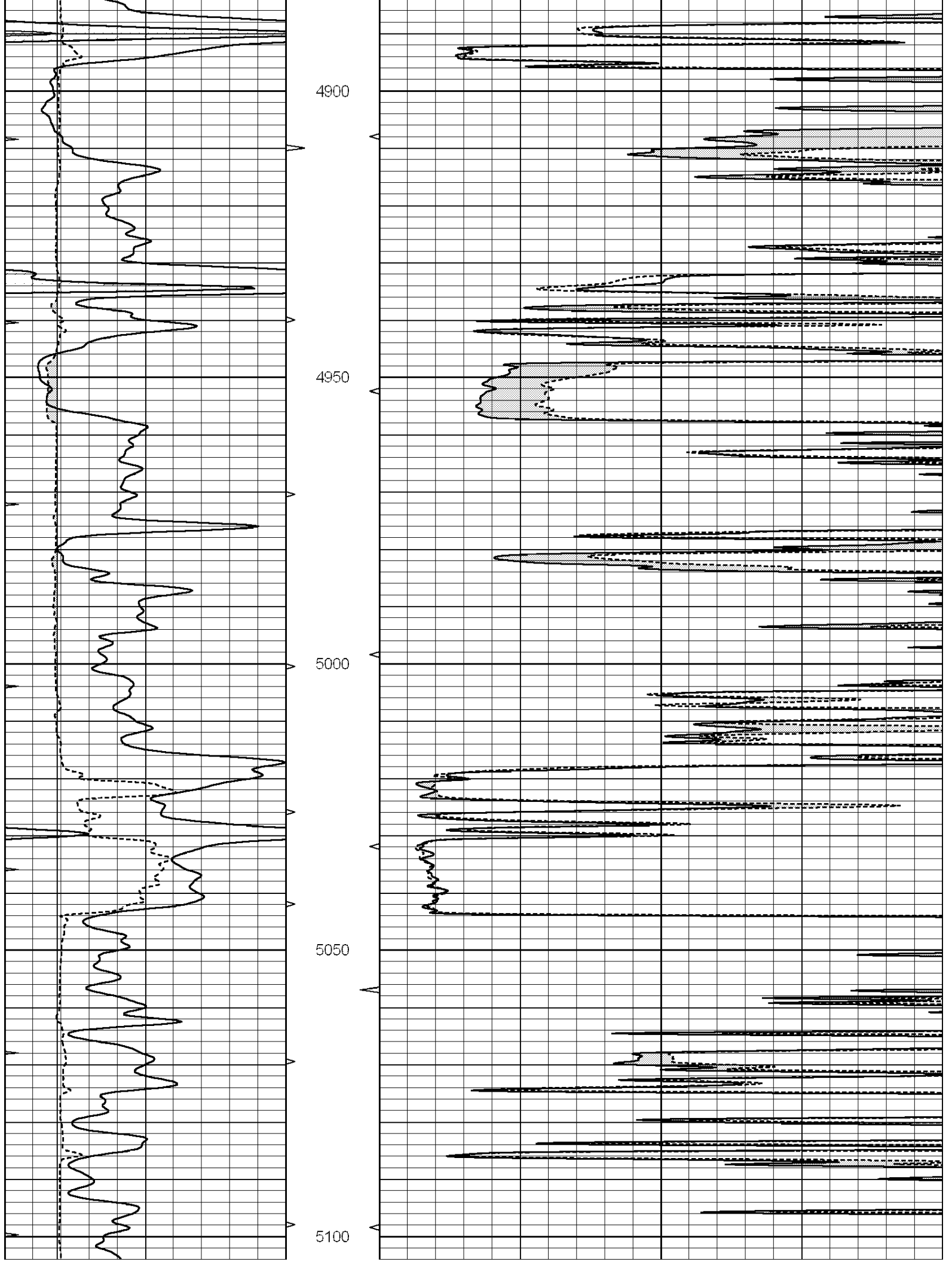
4700

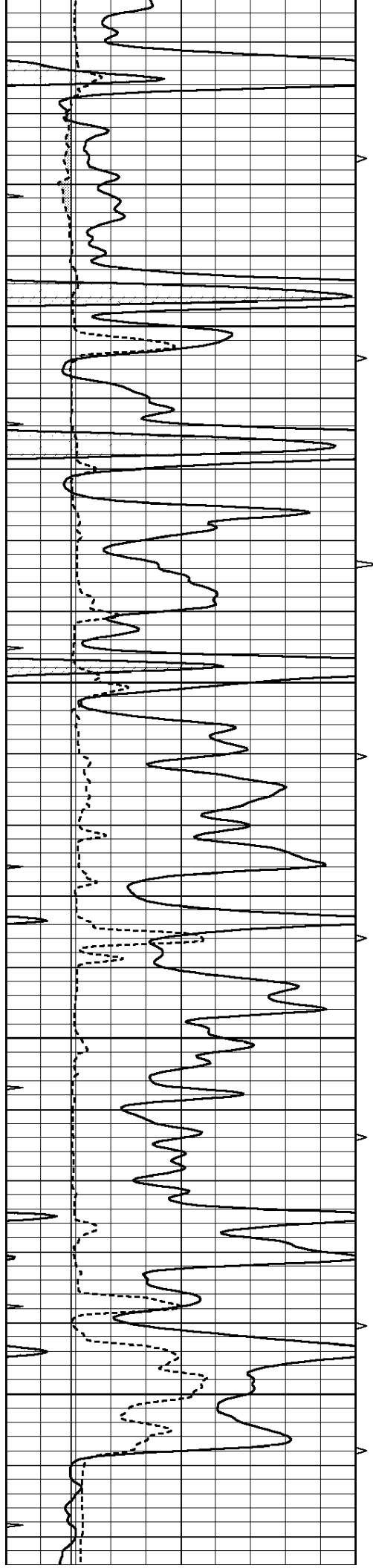
4750

4800

4850





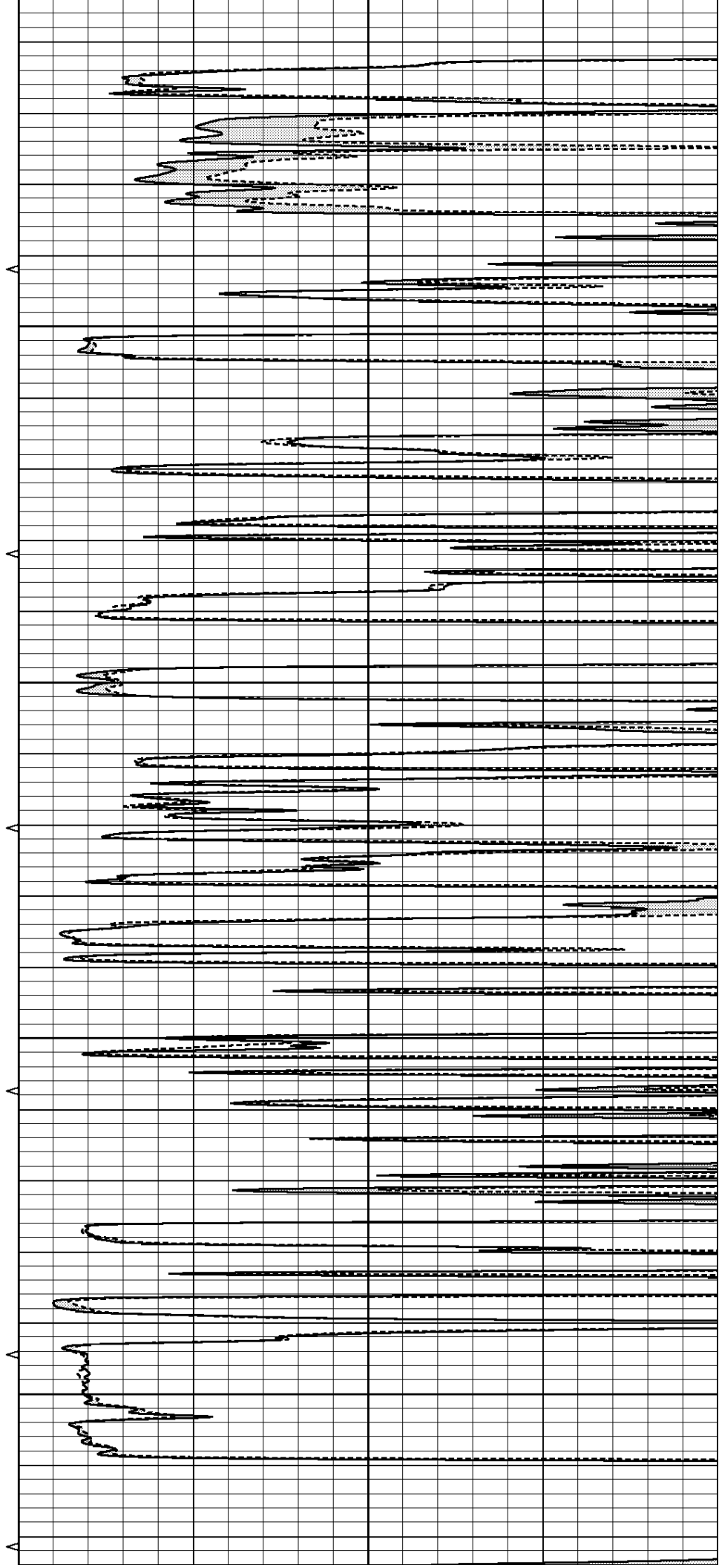


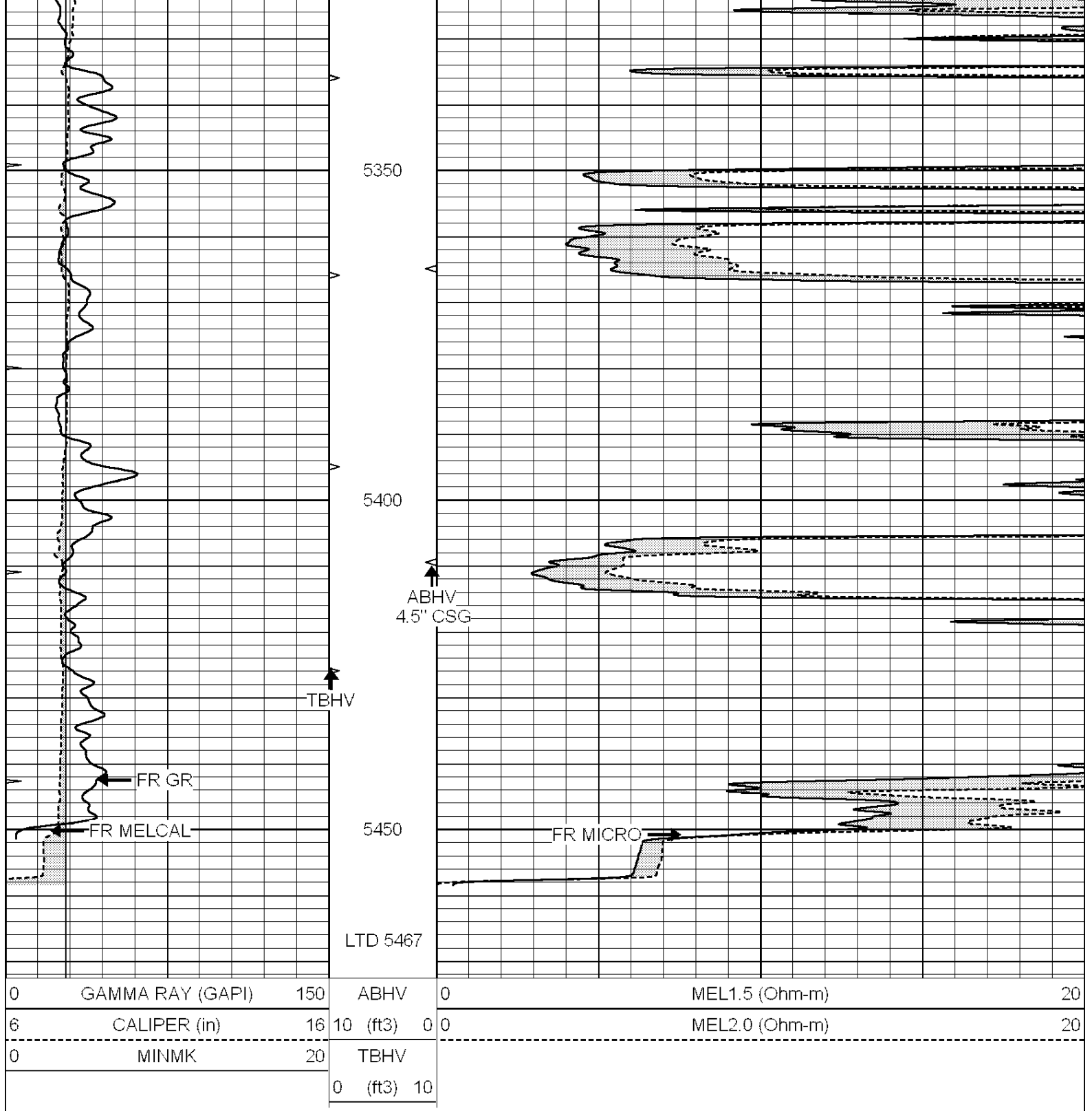
5150

5200

5250

5300



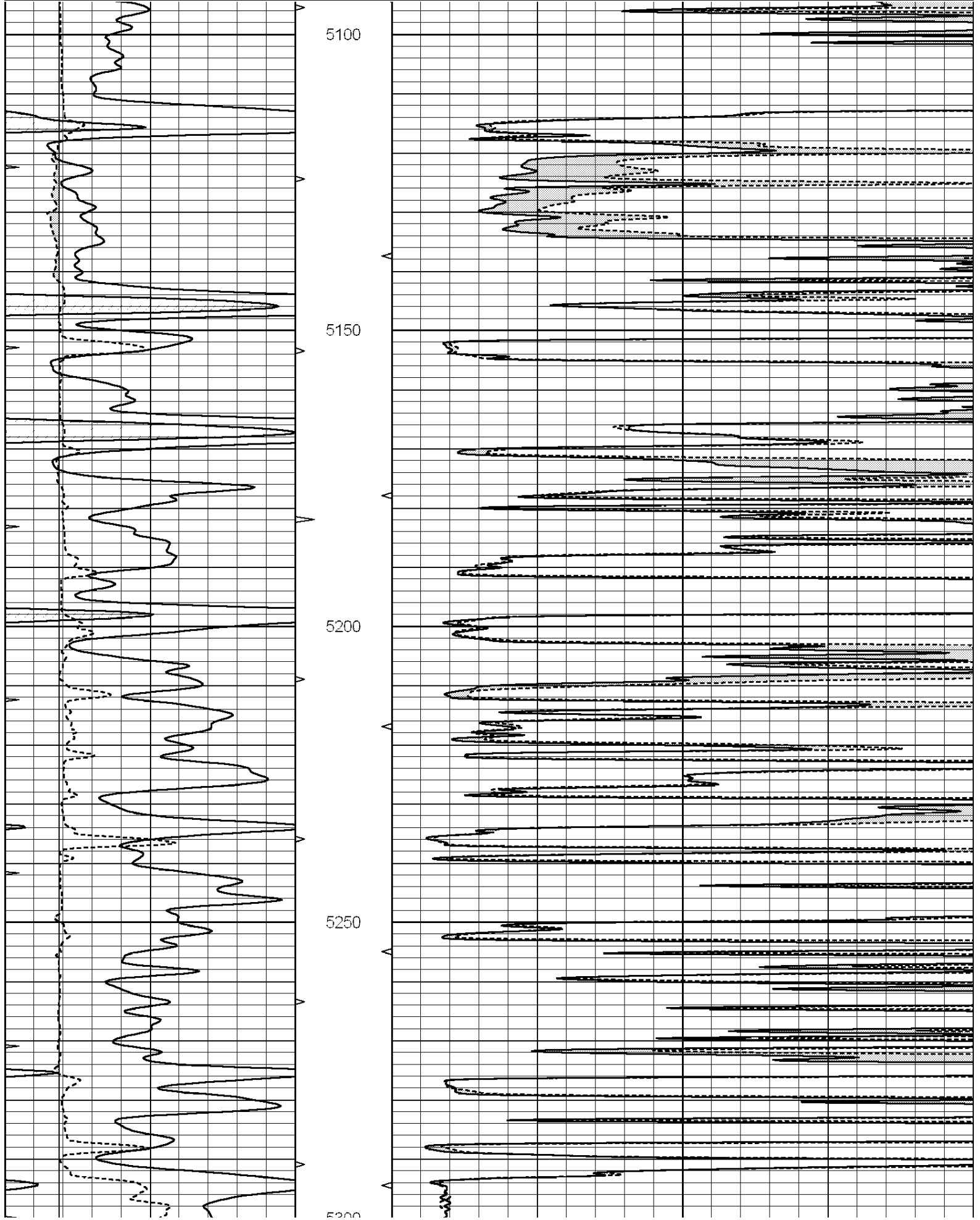


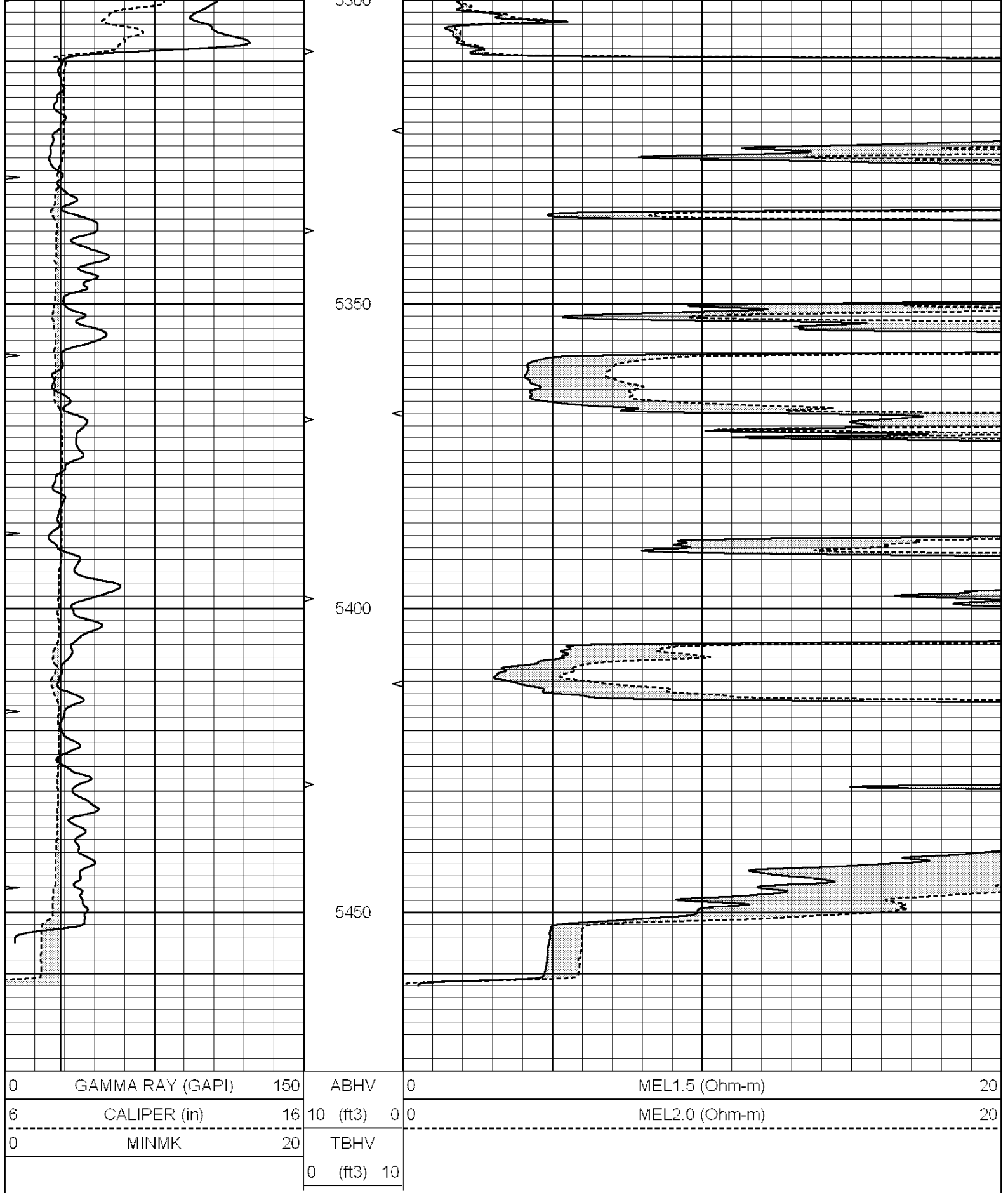
# REPEAT SECTION

Database File: 24555pe.db  
 Dataset Pathname: pass5.3  
 Presentation Format: \_micro  
 Dataset Creation: Fri Jul 18 13:17:07 2014 by Calc SOC 120430  
 Charted by: Depth in Feet scaled 1:240

0	GAMMA RAY (GAPI)	150	ABHV	0	MEL1.5 (Ohm-m)	20
---	------------------	-----	------	---	----------------	----

6	CALIPER (in)	16	10 (ft3)	0 0	MEL2.0 (Ohm-m)	20
0	MINMK	20	TBHV			
			0 (ft3)	10		





Calibration Report

Database File: 24555pe.db  
 Dataset Pathname: pass7.1  
 Dataset Creation: Fri Jul 18 14:22:35 2014 by Calc SOC 120430

## MICRO Calibration Report

Serial Number:	070911
Tool Model:	ProbeN
Performed:	Mon Jun 16 14:49:24 2014

Caliper Calibration:	Gain=3.768	Offset=2.771
References	Low Cal	High Cal
Readings	7.500	15.000
	1.361	3.352

1.5" Calibration:	Gain=25.000	Offset=0.500
References	Low Cal	High Cal
Readings	0.000	20.000
	0.001	1.269

2" Calibration:	Gain=50.000	Offset=0.000
References	Low Cal	High Cal
Readings	0.000	20.000
	0.002	1.101

## Gamma Ray Calibration Report

Serial Number:	070559
Tool Model:	OPEN_GR
Performed:	Tue Jun 10 17:15:42 2014

Calibrator Value:	1.0	GAPI
Background Reading:	0.0	cps
Calibrator Reading:	1.0	cps
Sensitivity:	0.2200	GAPI/cps