



**COMPLETION
& PRODUCTION
SERVICES CO.**

**DUAL
INDUCTION
LOG**

Company VINCENT OIL CORP.
Well MARFAM #3-32
Field FAGER EAST
County FORD
State KANSAS

Company VINCENT OIL CORPORATION
Well MARFAM #3-32
Field FAGER EAST
County FORD State KANSAS

Location: API # : 15-057-20935-0000
990' FNL & 2090' FWL
W/2 - SE - NE - NW
SEC 32 TWP 29S RGE 24W
Permanent Datum GROUND LEVEL Elevation 2573
Log Measured From KELLY BUSHING 12' A.G.L.
Drilling Measured From KELLY BUSHING
Other Services
CDL/CNL/PE
MEL/SON
Elevation
K.B. 2585
D.F. 2583
G.L. 2573

Date	7/18/14
Run Number	ONE
Depth Driller	5467
Depth Logger	5467
Bottom Logged Interval	5465
Top Log Interval	0
Casing Driller	8 5/8" @ 648
Casing Logger	646
Bit Size	7 7/8"
Type Fluid in Hole	CHEMICAL MUD
Density / Viscosity	9.3/55
pH / Fluid Loss	10.5/9.6
Source of Sample	FLOWLINE
Rin @ Meas. Temp	0.40 @ 83F
Rmf @ Meas. Temp	0.30 @ 83F
Rmc @ Meas. Temp	0.48 @ 83F
Source of Rmf / Rmc	MEASUREMENT
Rin @ BHT	0.26 @ 129F
Time Circulation Stopped	2 HOURS
Time Logger on Bottom	
Maximum Recorded Temperature	129F
Equipment Number	4854
Location	HAYS, KANSAS
Recorded By	JEFF GRONEMEG
Witnessed By	JIM HALL

<<< Fold Here >>>

All interpretations are opinions based on inferences from electrical or other measurements and we cannot and do not guarantee the accuracy or correctness of any interpretation, and we shall not, except in the case of gross or willful negligence on our part, be liable or responsible for any loss, costs, damages, or expenses incurred or sustained by anyone resulting from any interpretation made by any of our officers, agents or employees. These interpretations are also subject to our general terms and conditions set out in our current Price Schedule.

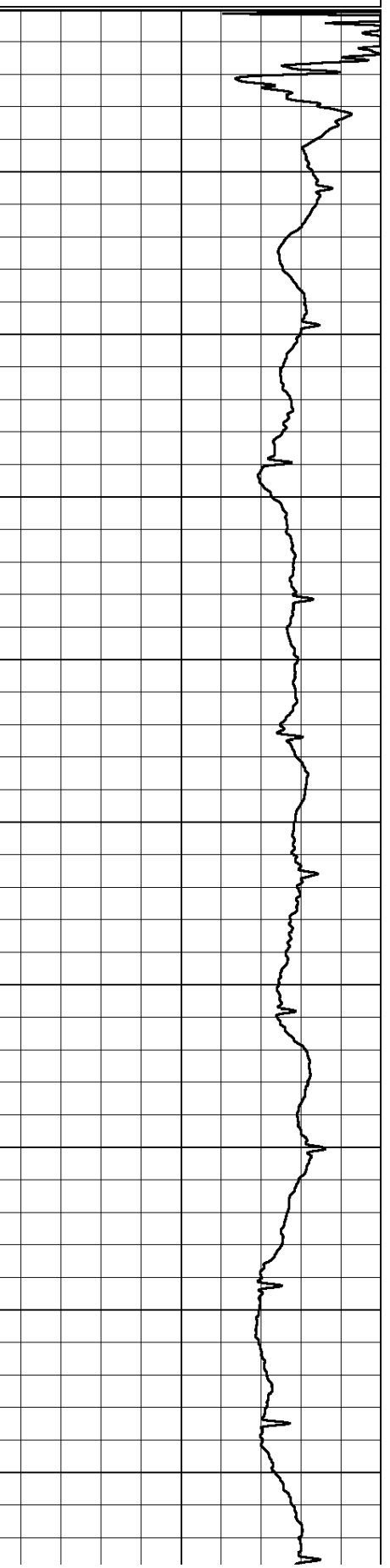
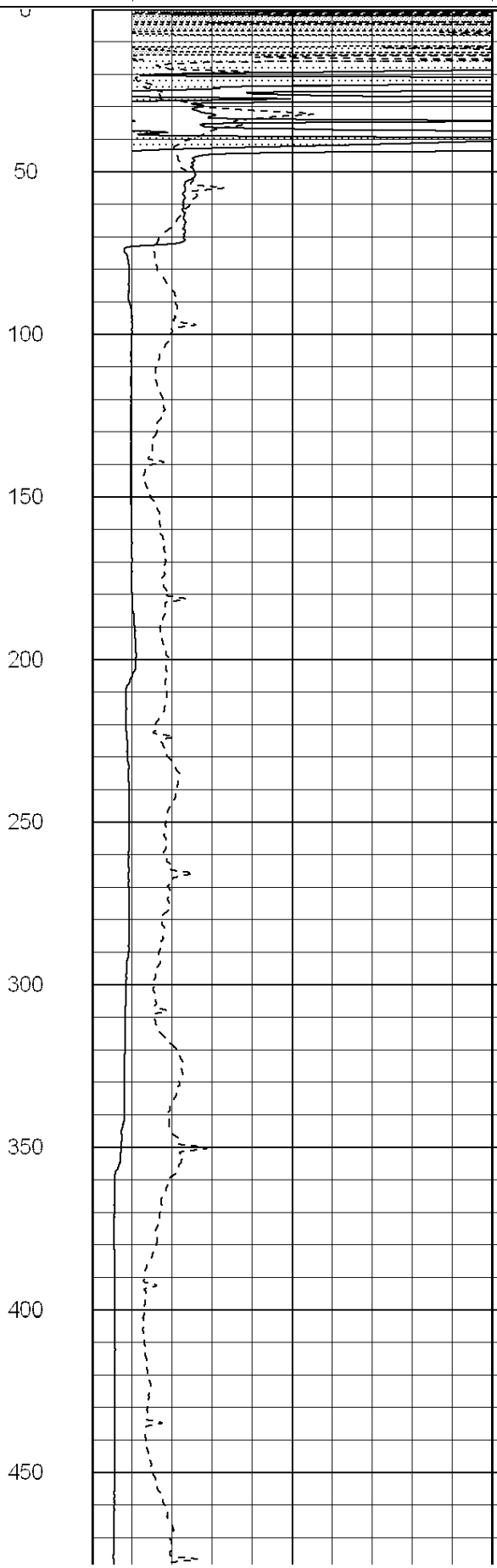
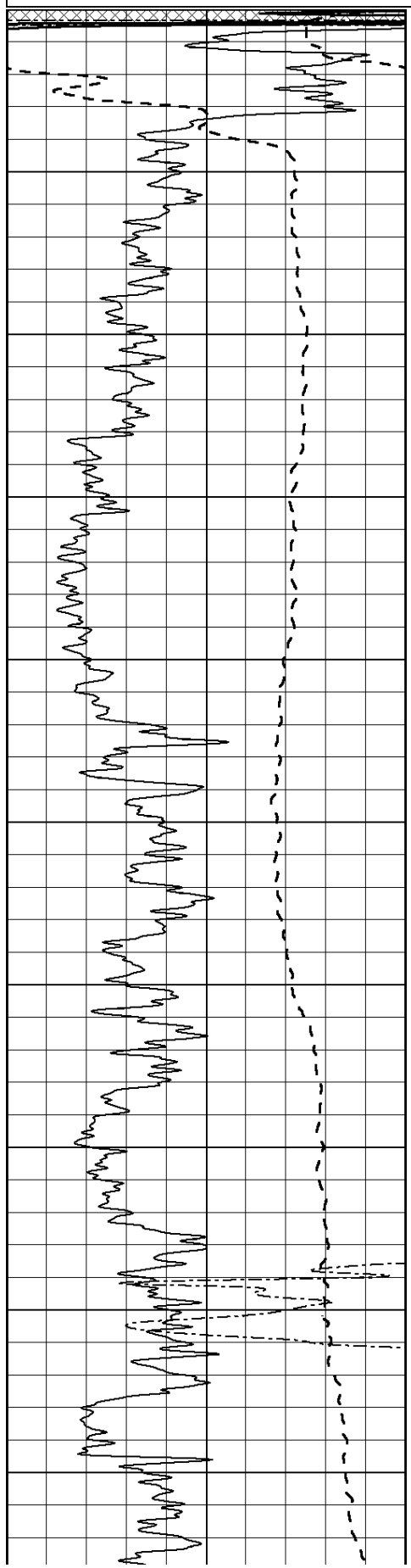
Comments

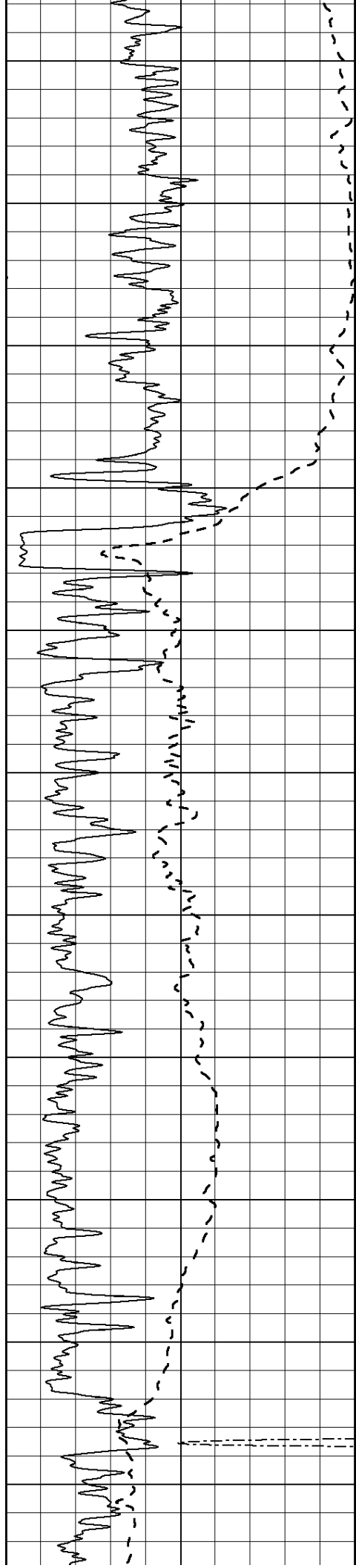
THANK YOU FOR USING "NABORS" HAYS, KANSAS (785) 628-6395
DIRECTIONS
DODGE CITY, KS - SOUTH TO YUCCA RD - 2 1/4 MILES EAST
SOUTH INTO

0	Gamma Ray (GAPI)	150
-100	SP (mV)	100
0	RWA (Ohm-m)	1

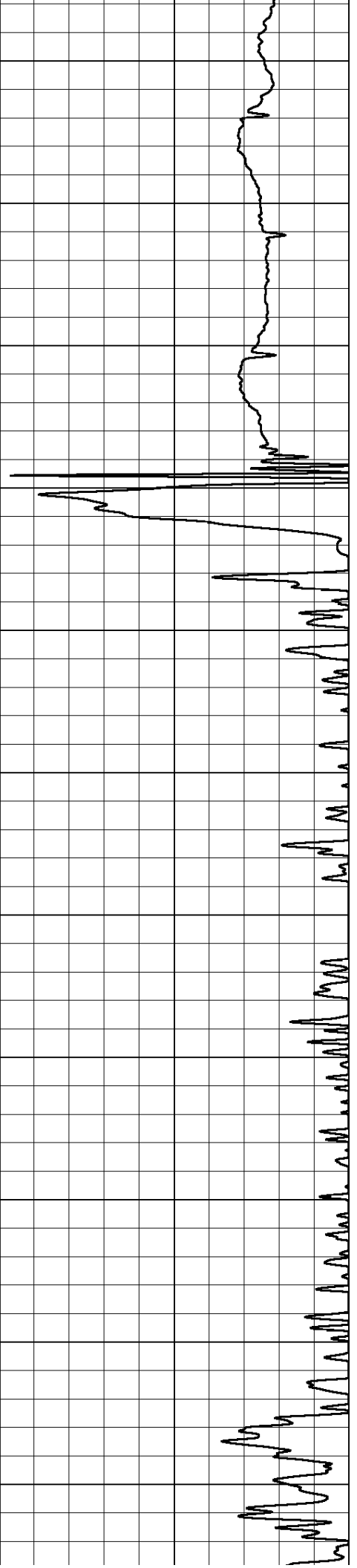
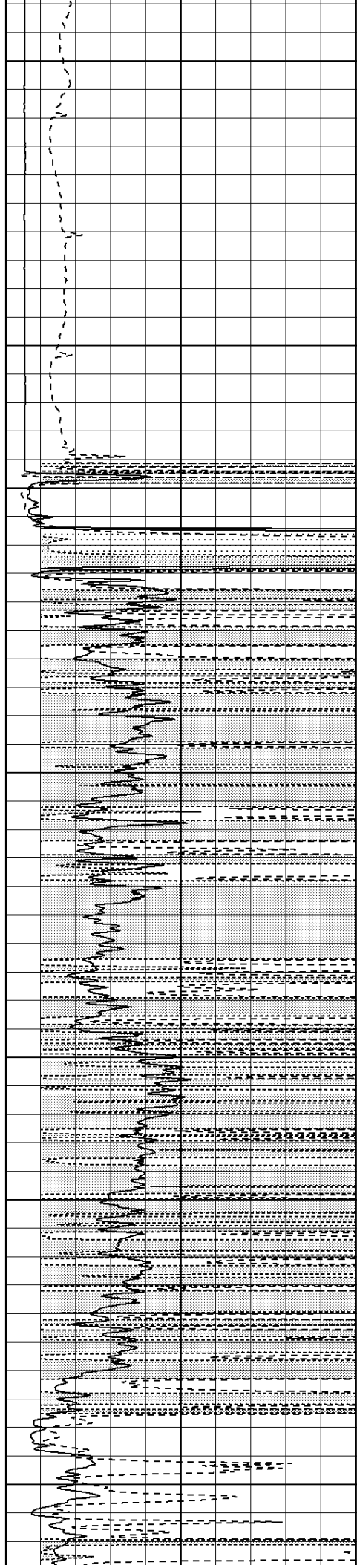
0	RLL3 (Ohm-m)	50
0	RILD (Ohm-m)	50
1000	CILD (mmho/m)	0

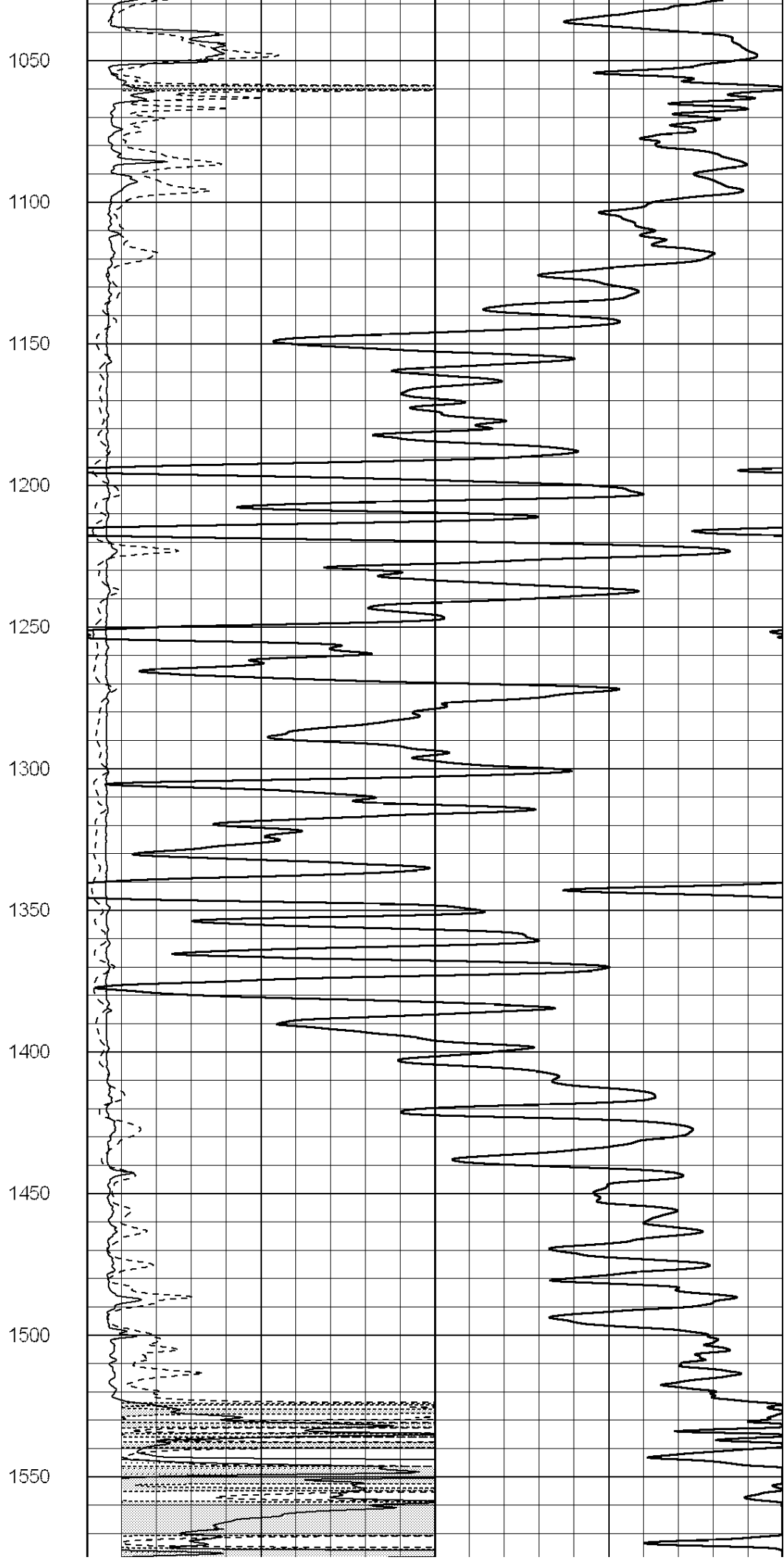
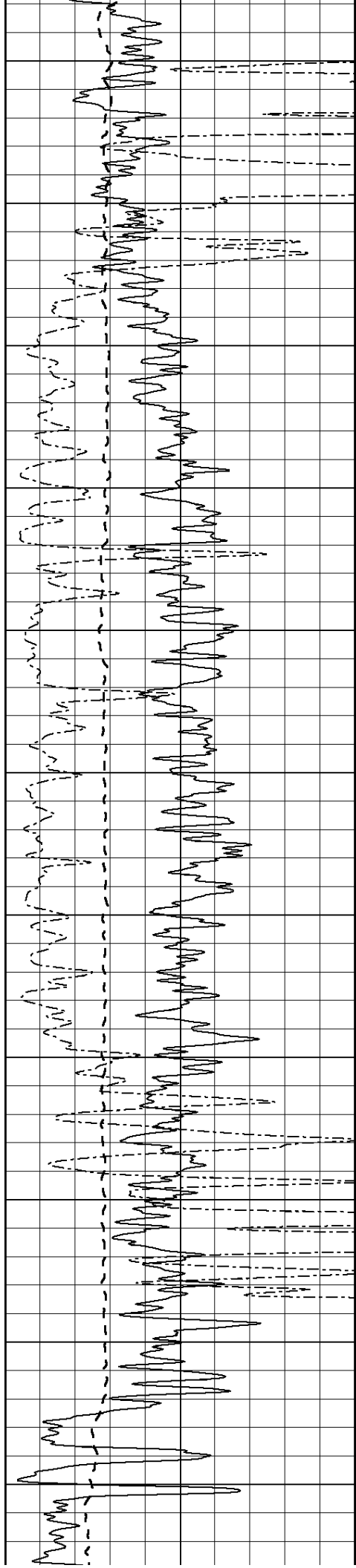
50	RILD X10 (Ohm-m)	500
50	RLL3 X10 (Ohm-m)	500

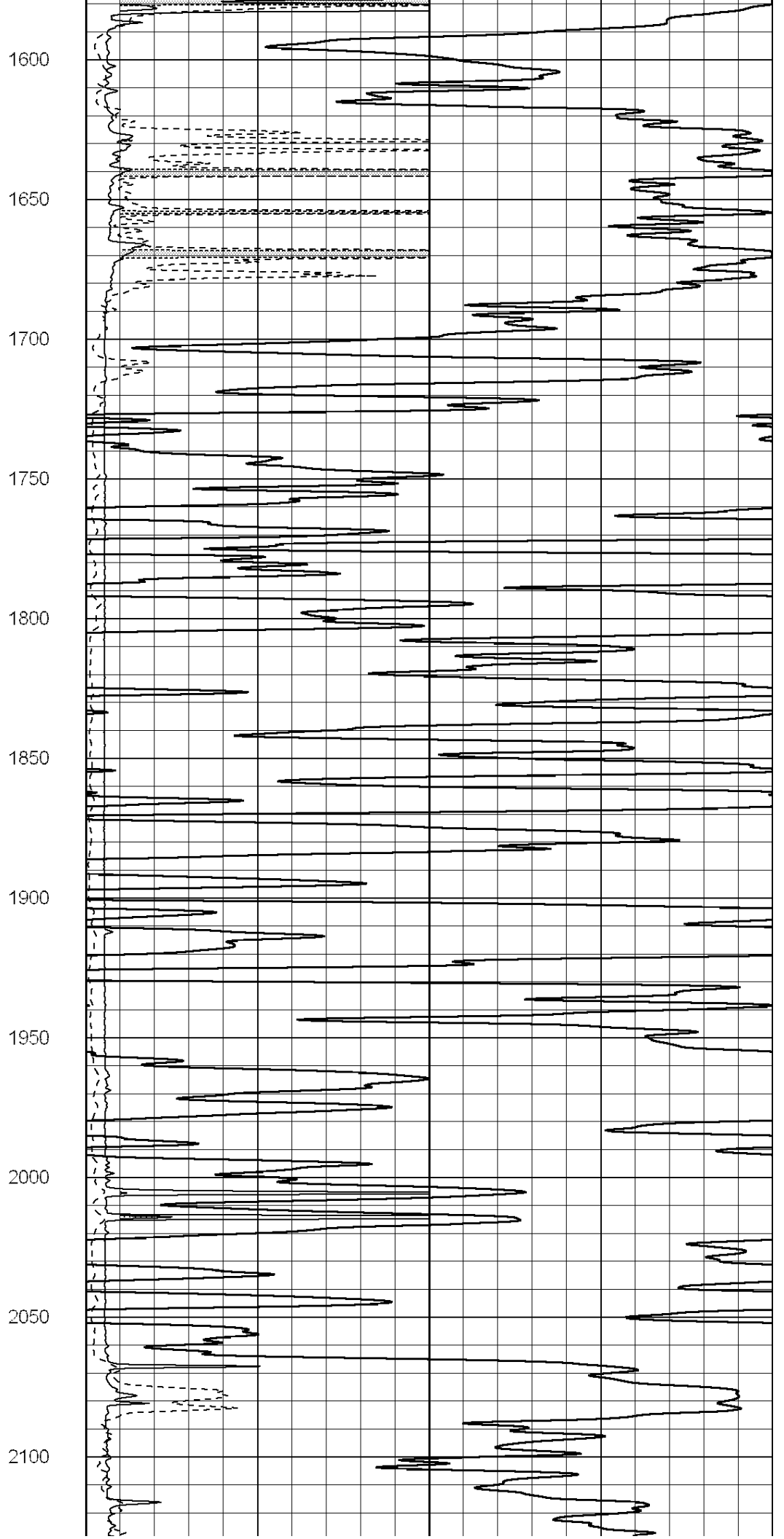
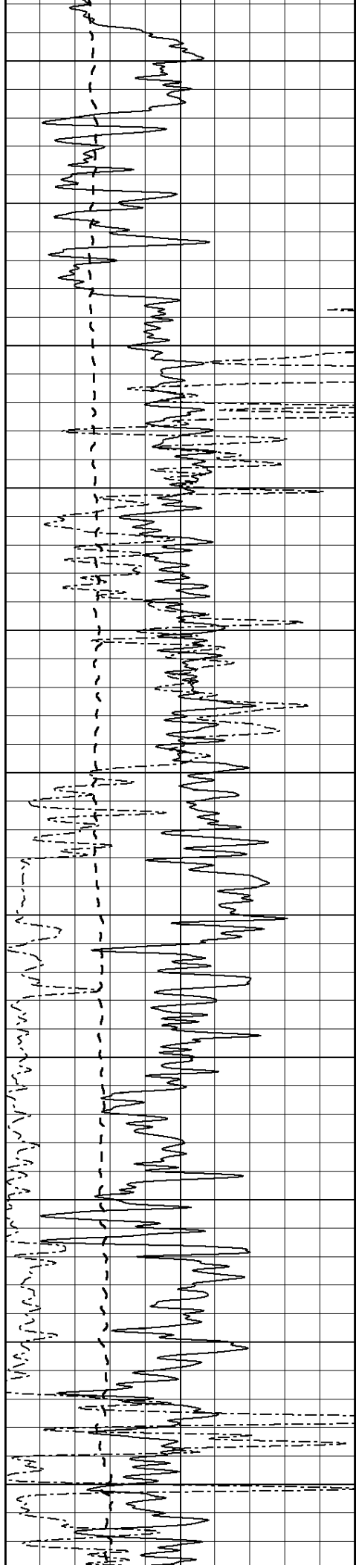


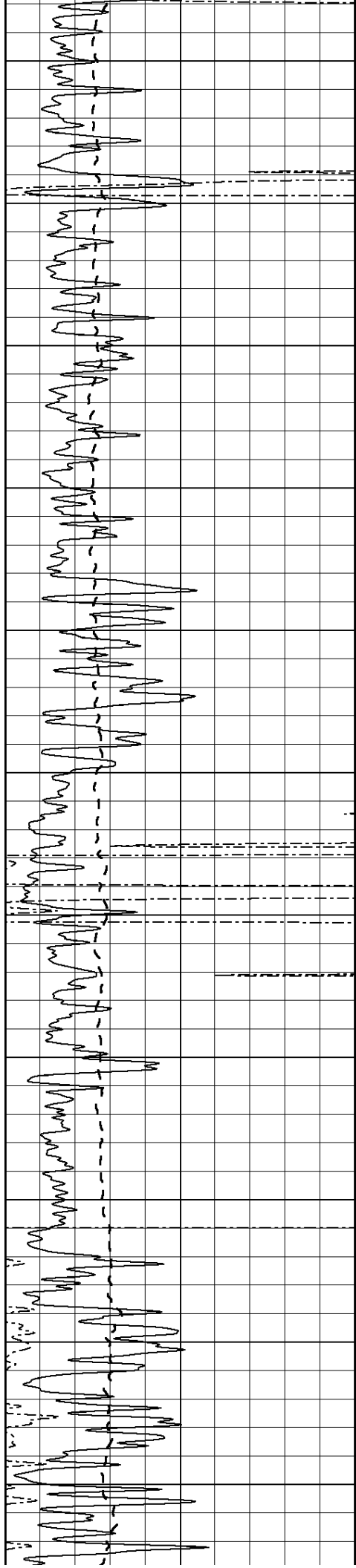


500
550
600
650
700
750
800
850
900
950
1000









2150

2200

2250

2300

2350

2400

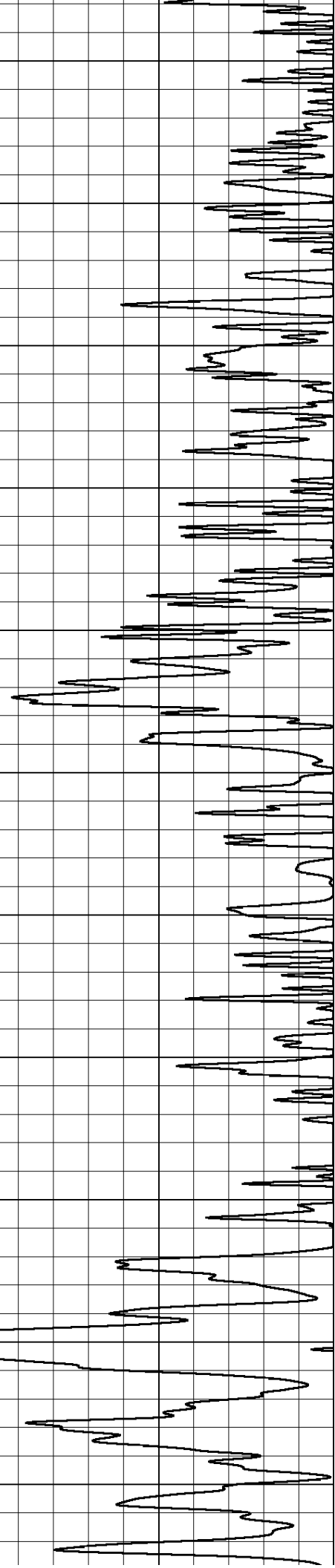
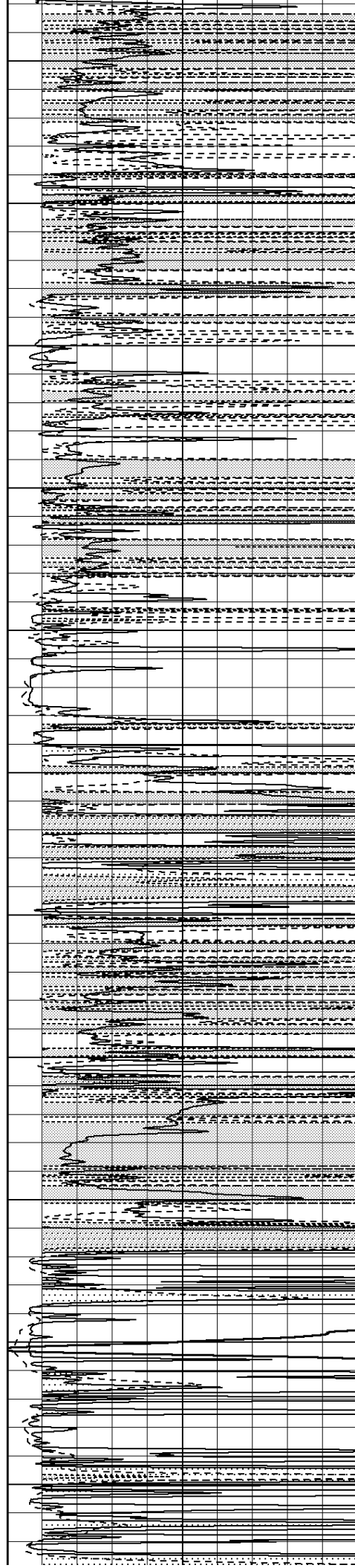
2450

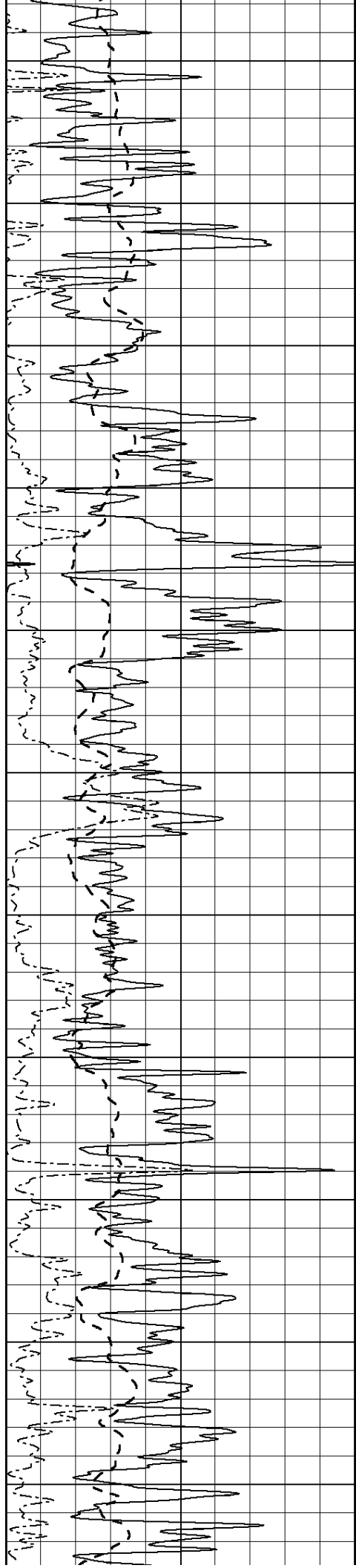
2500

2550

2600

2650





2700

2750

2800

2850

2900

2950

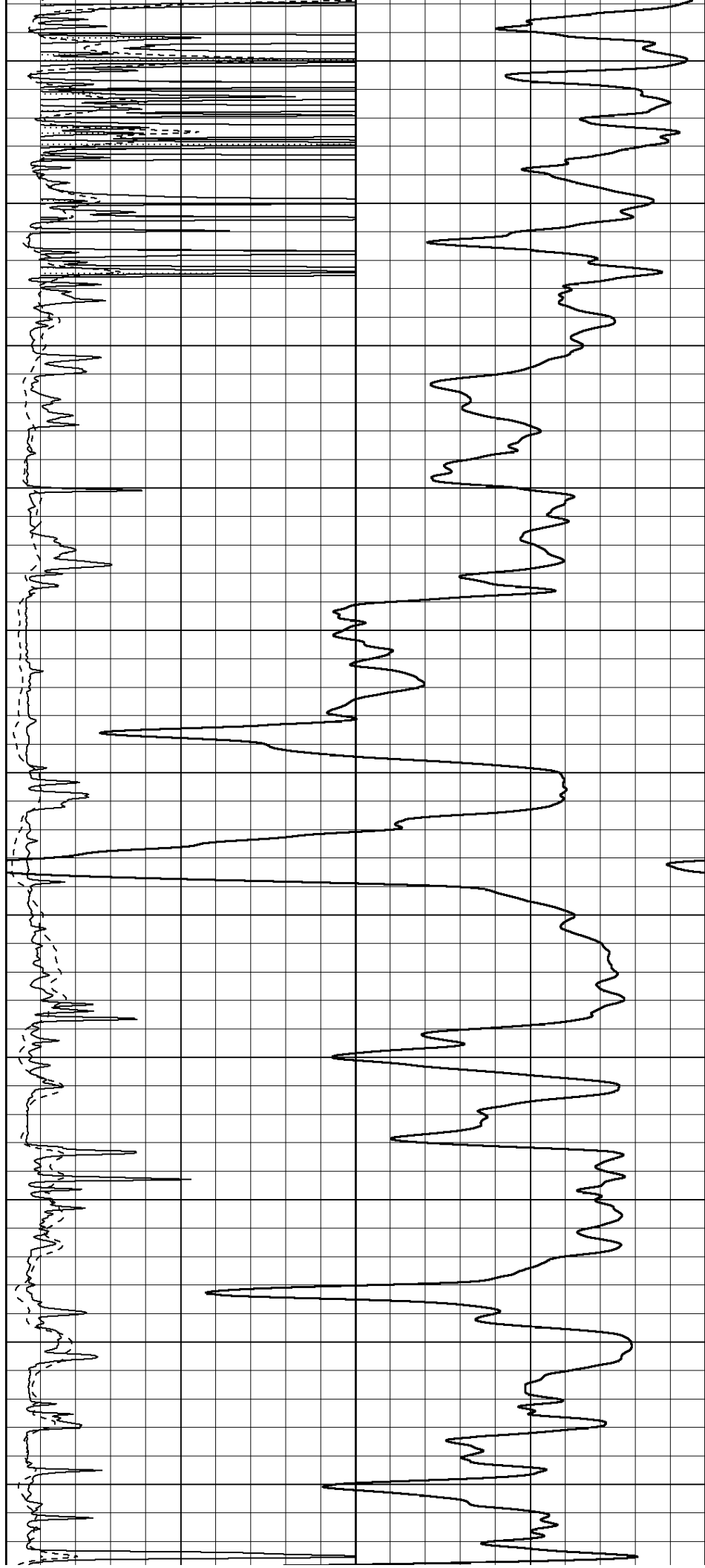
3000

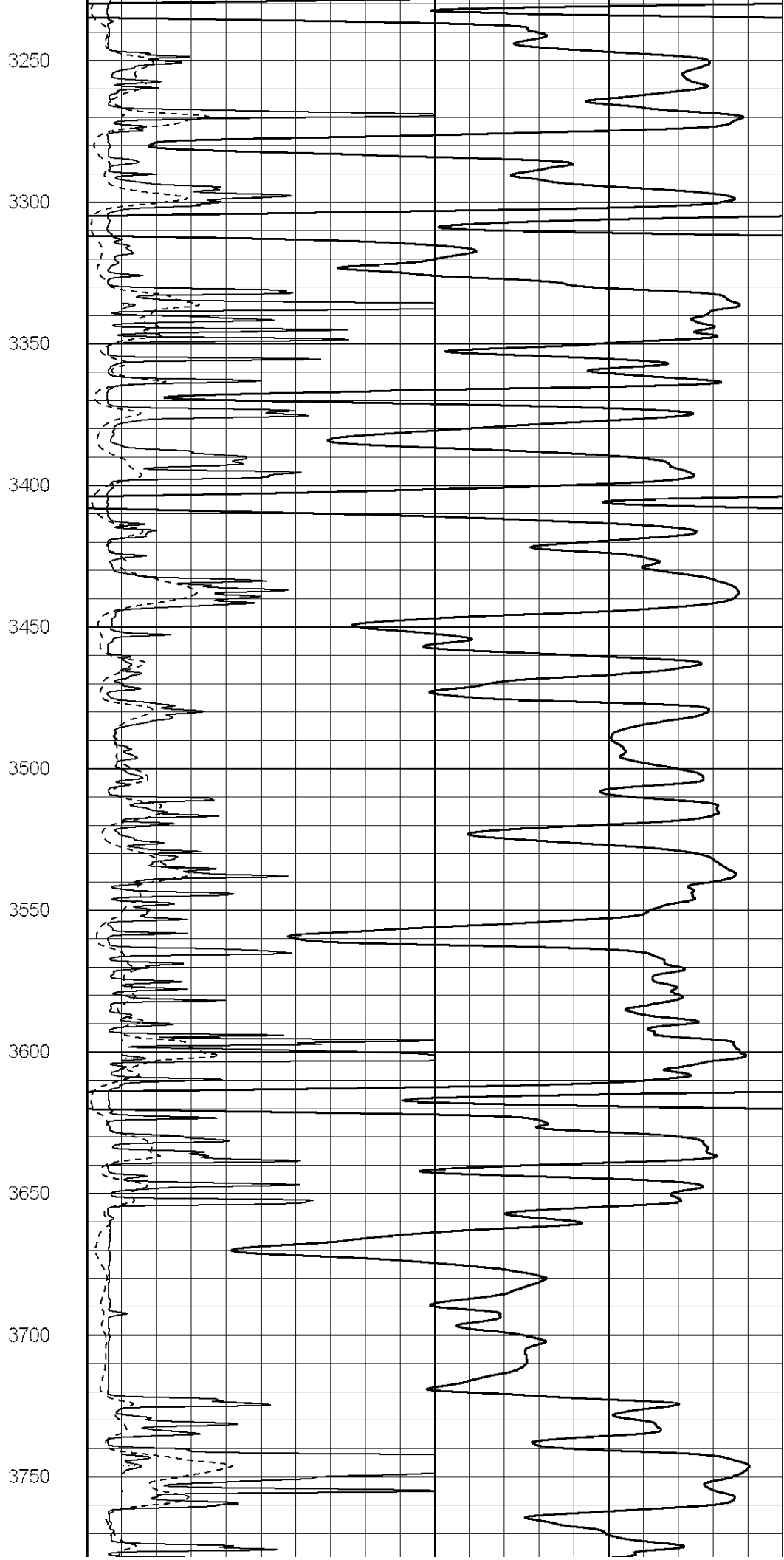
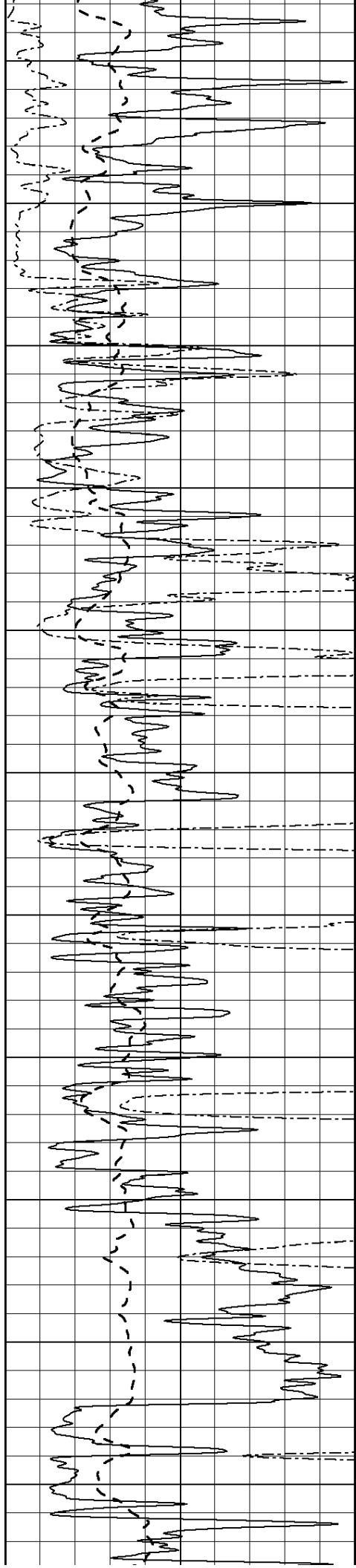
3050

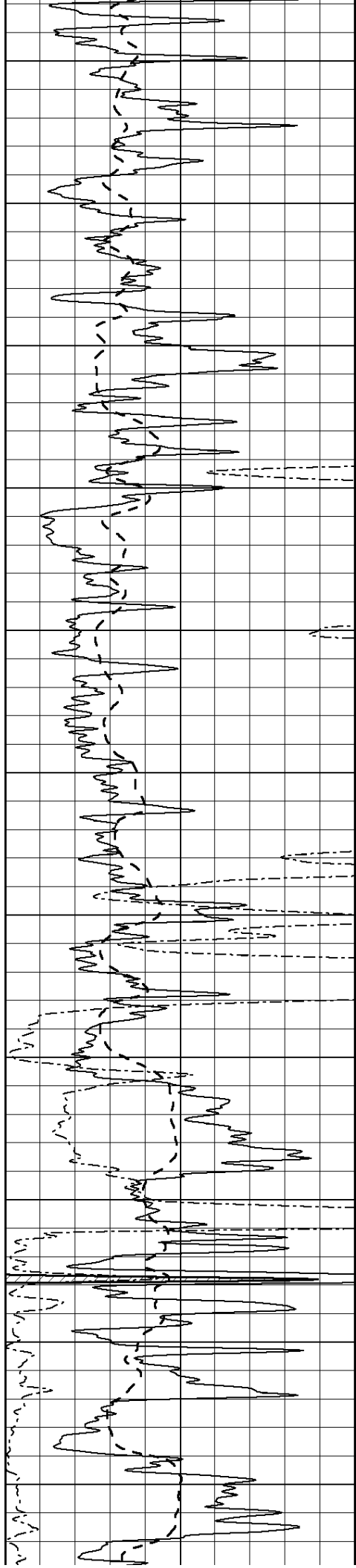
3100

3150

3200







3800

3850

3900

3950

4000

4050

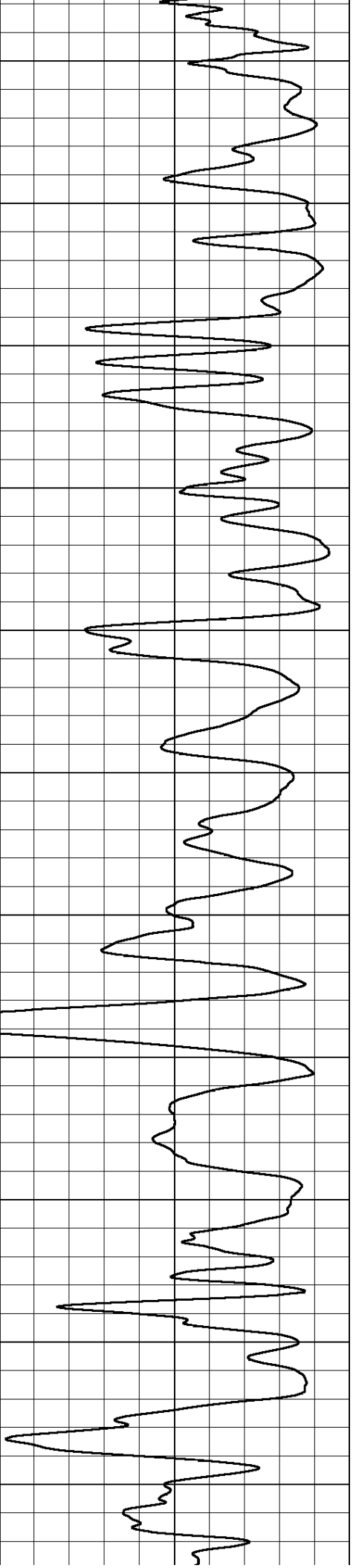
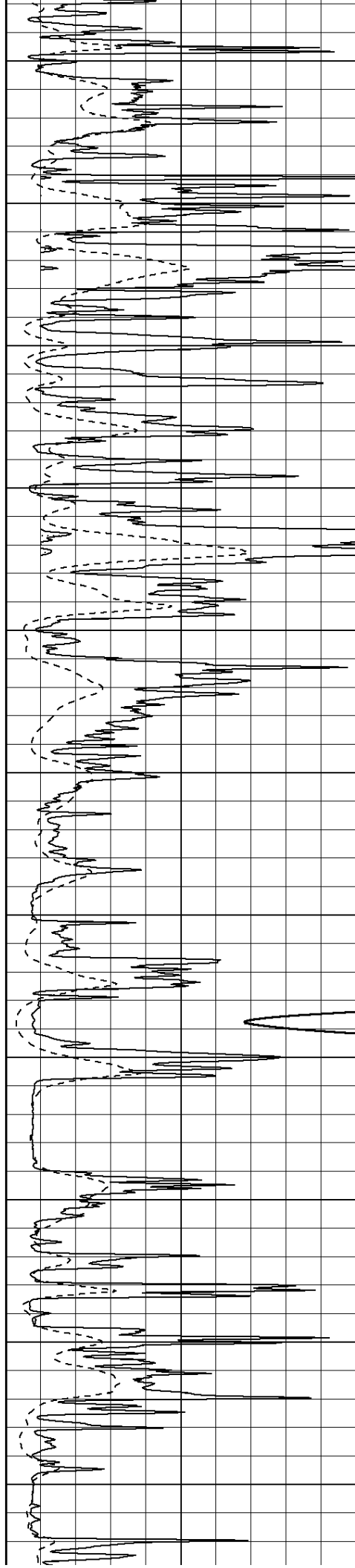
4100

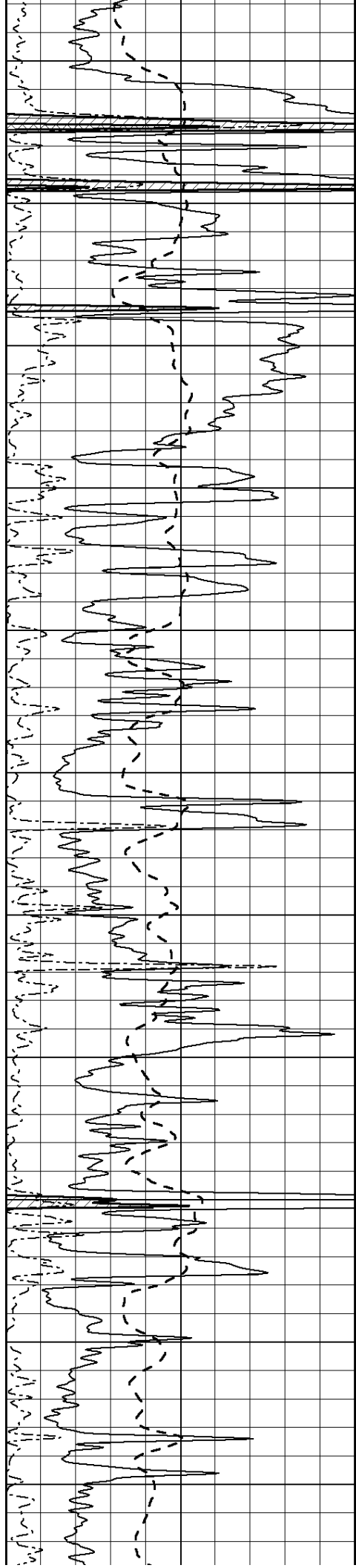
4150

4200

4250

4300





4350

4400

4450

4500

4550

4600

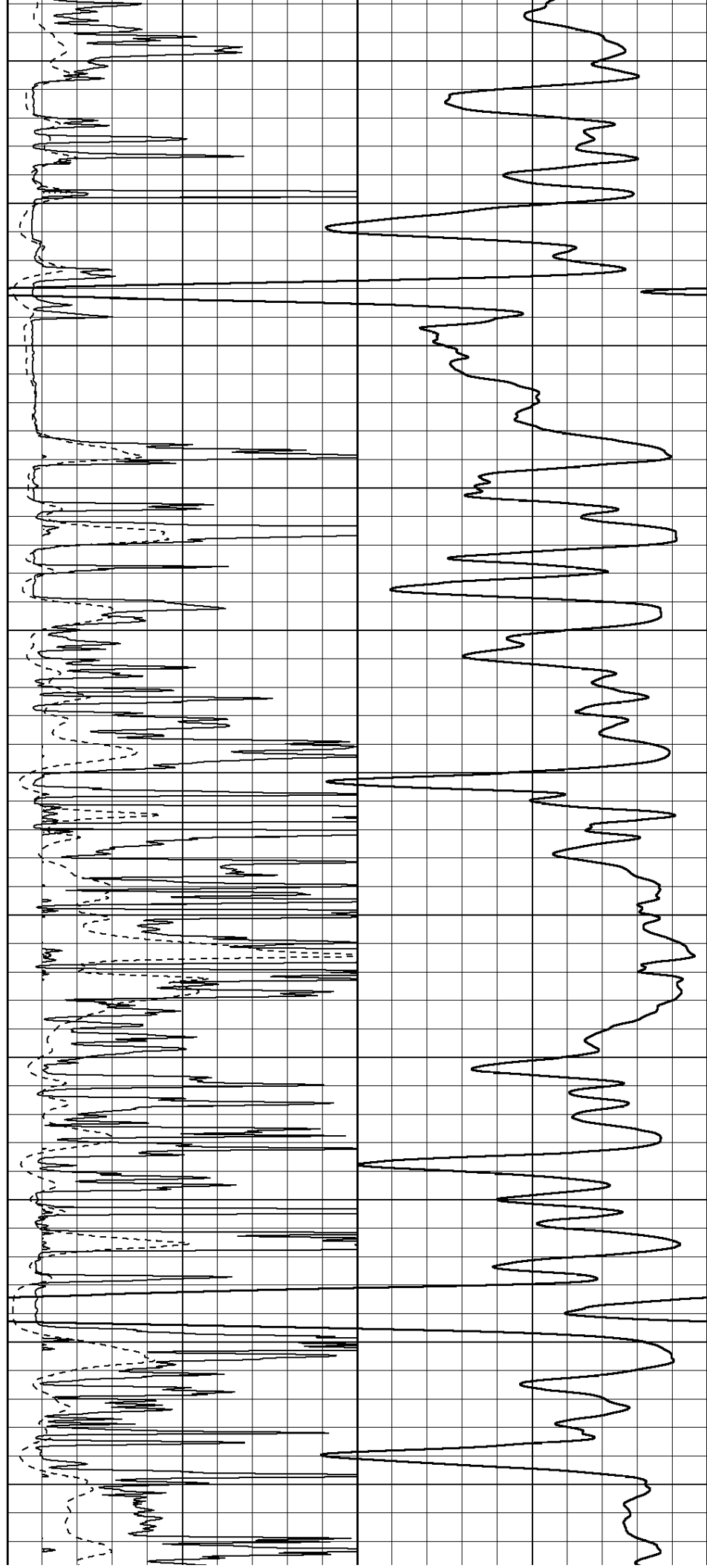
4650

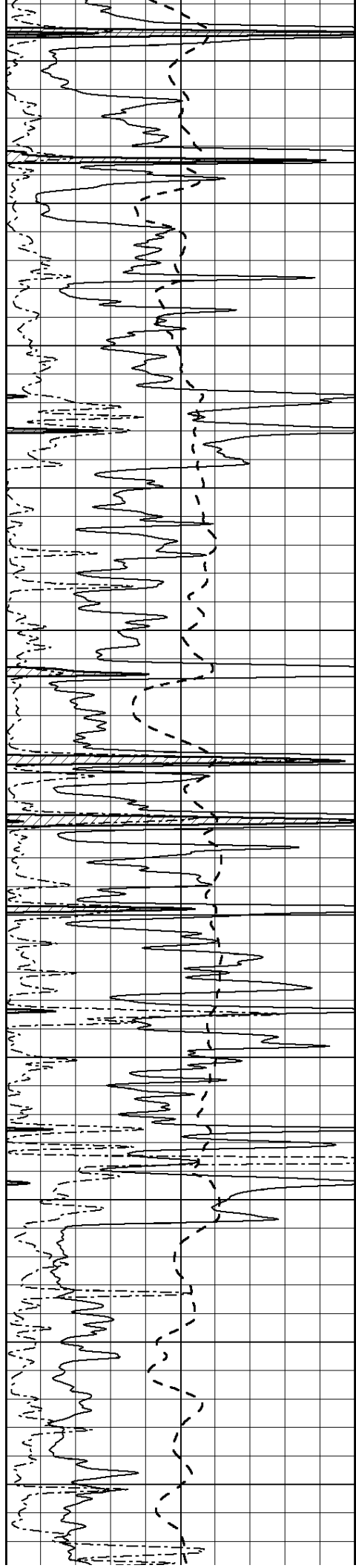
4700

4750

4800

4850





4900

4950

5000

5050

5100

5150

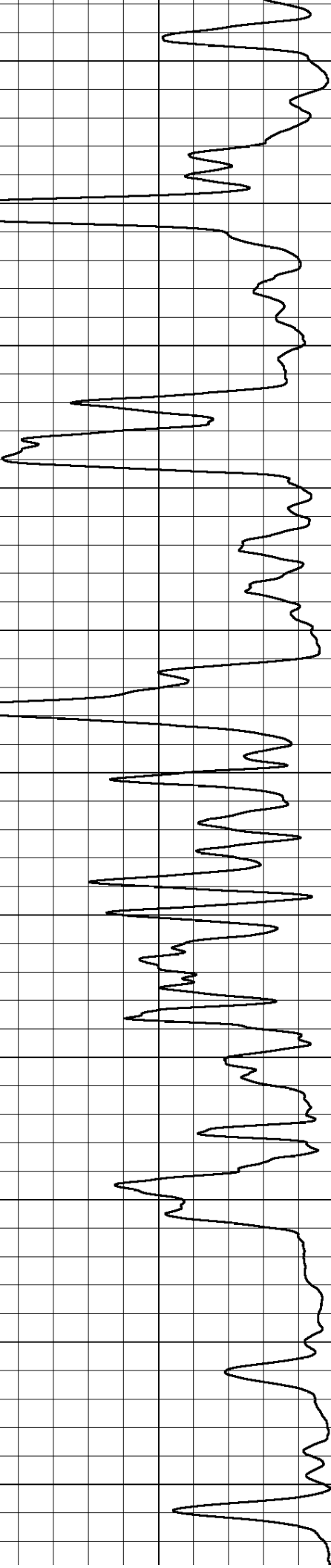
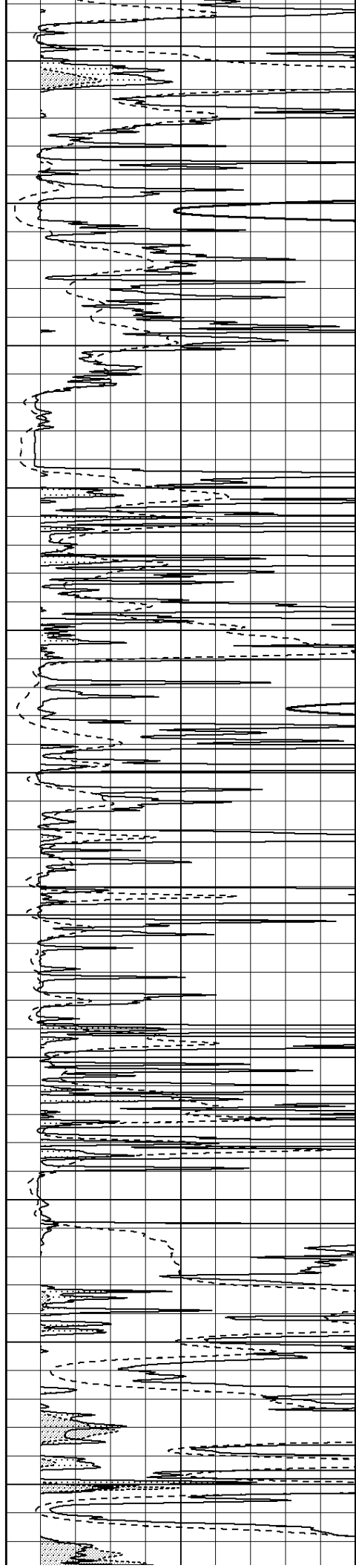
5200

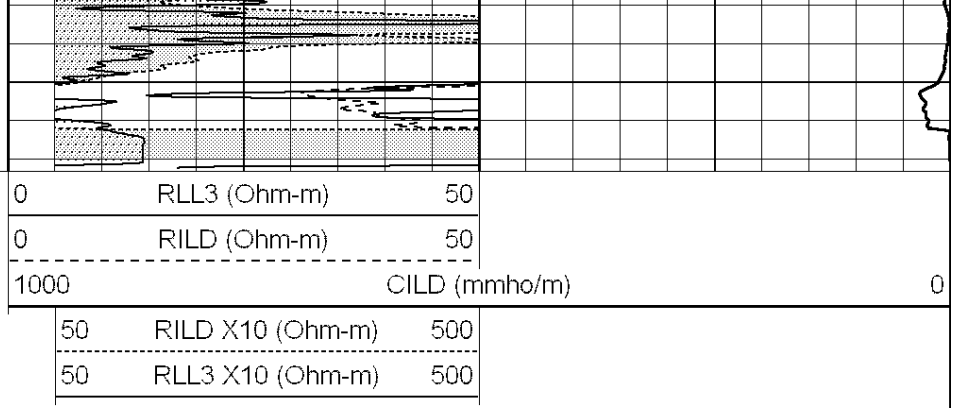
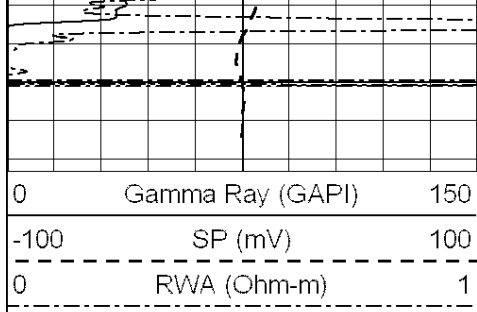
5250

5300

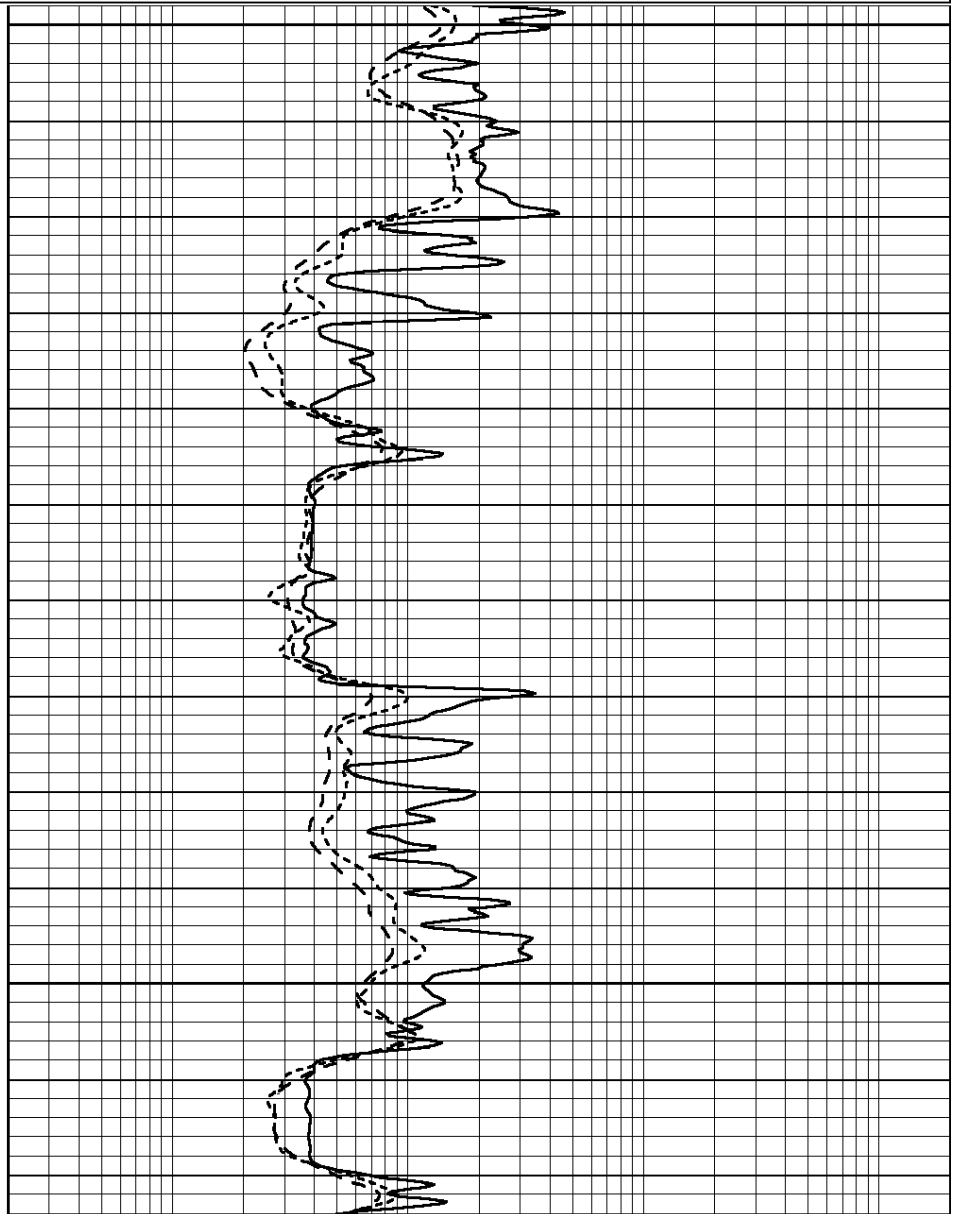
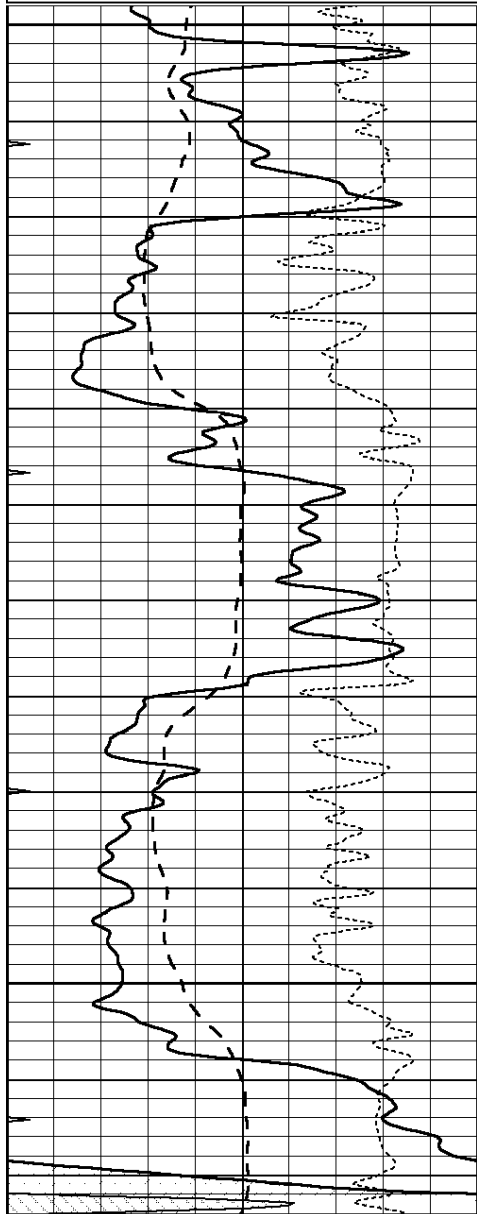
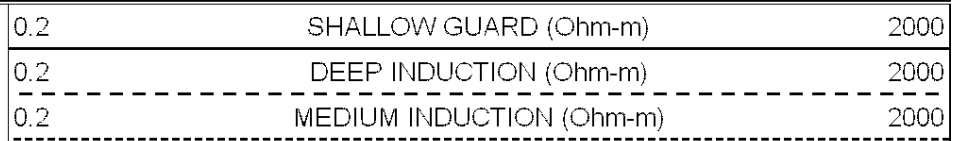
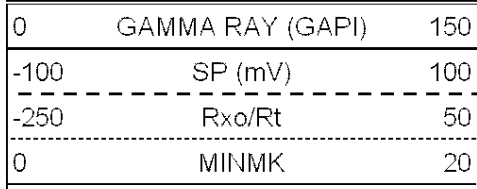
5350

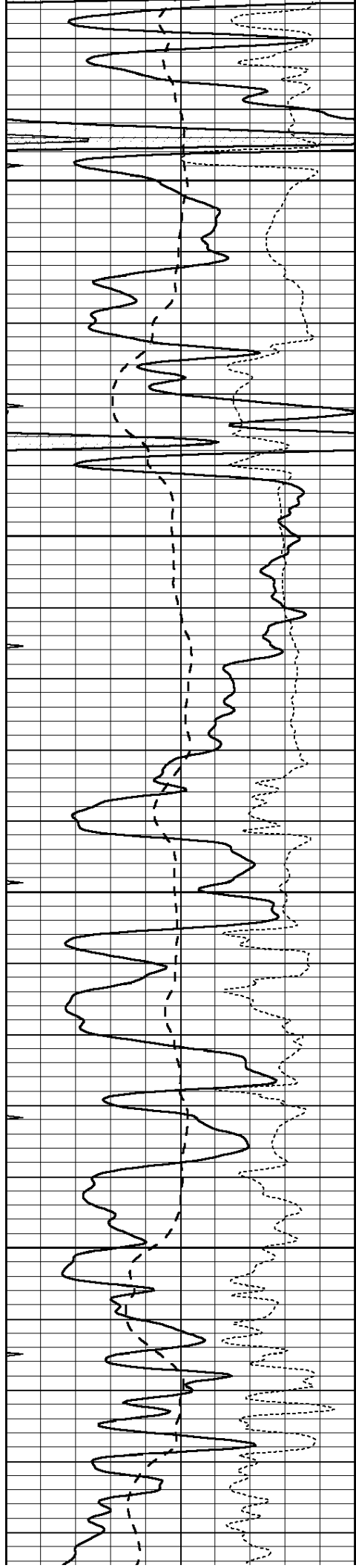
5400





Database File: 24555pe.db
 Dataset Pathname: pass3.2
 Presentation Format: _dil
 Dataset Creation: Fri Jul 18 11:29:01 2014 by Calc SOC 120430
 Charted by: Depth in Feet scaled 1:240



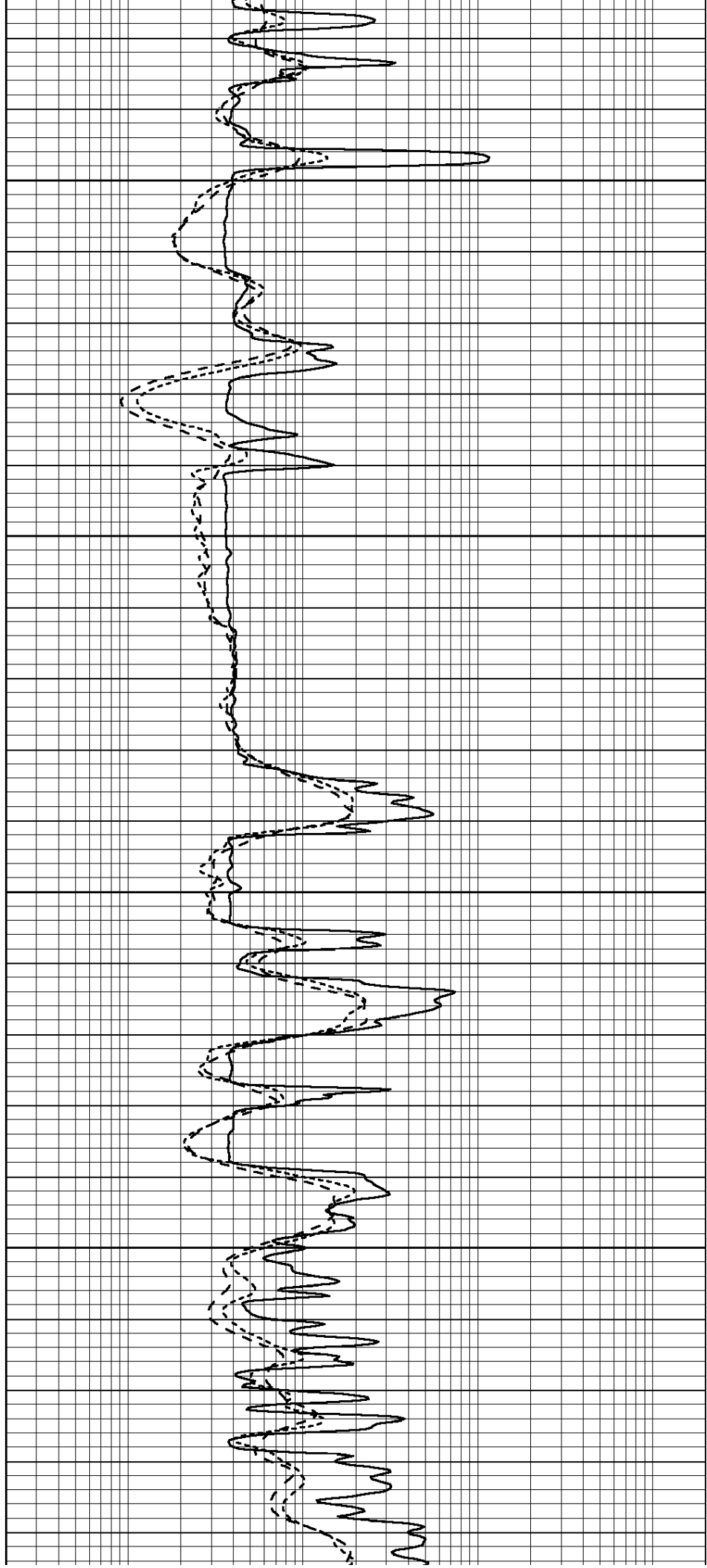


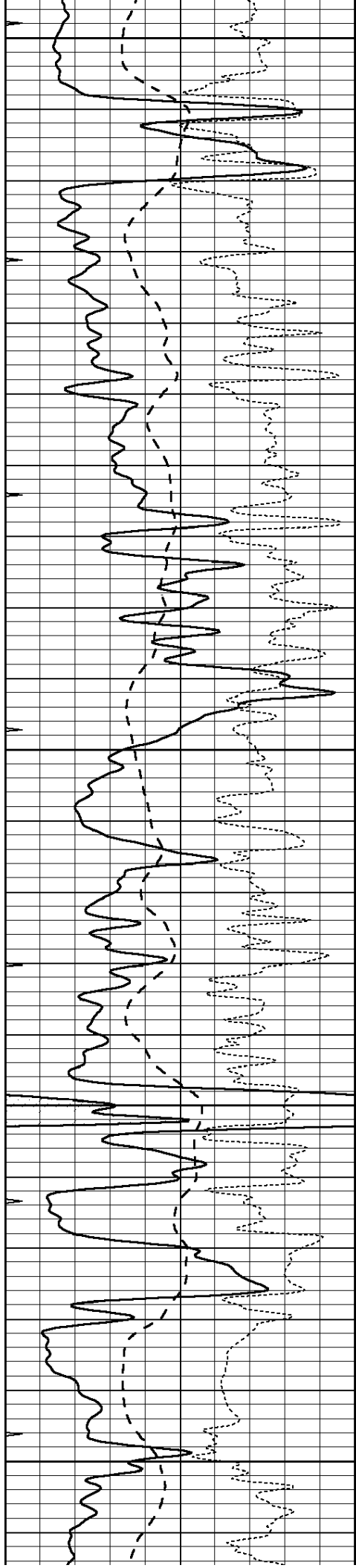
4400

4450

4500

4550





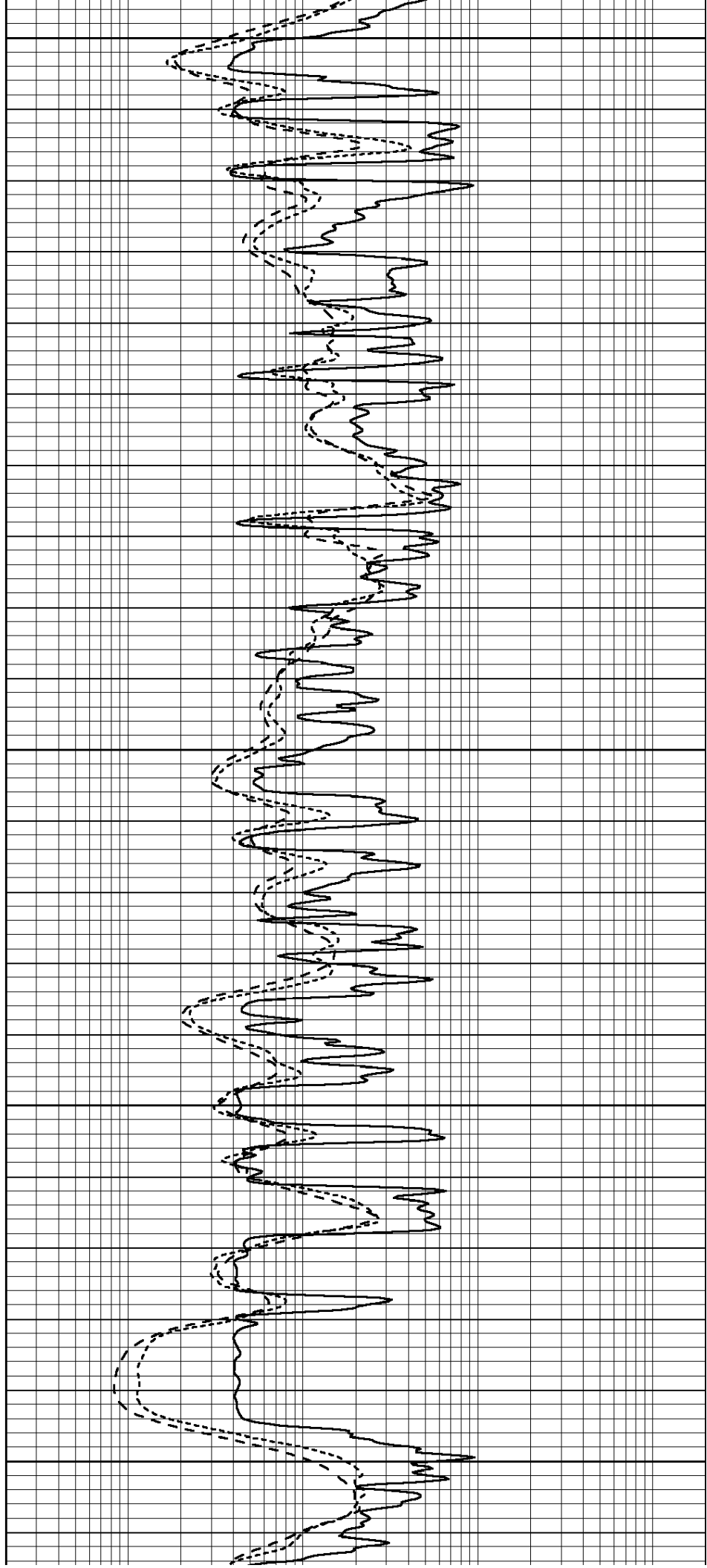
4600

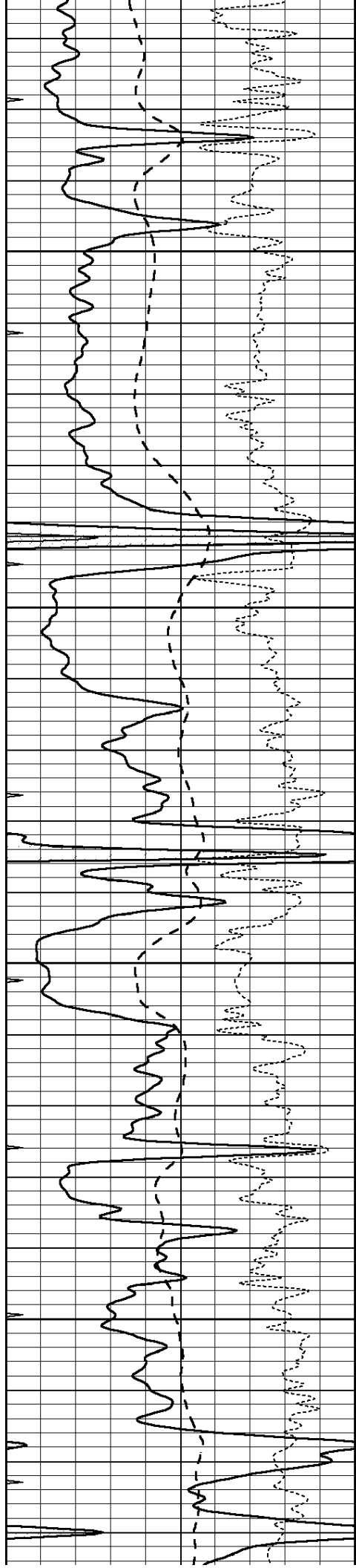
4650

4700

4750

4800



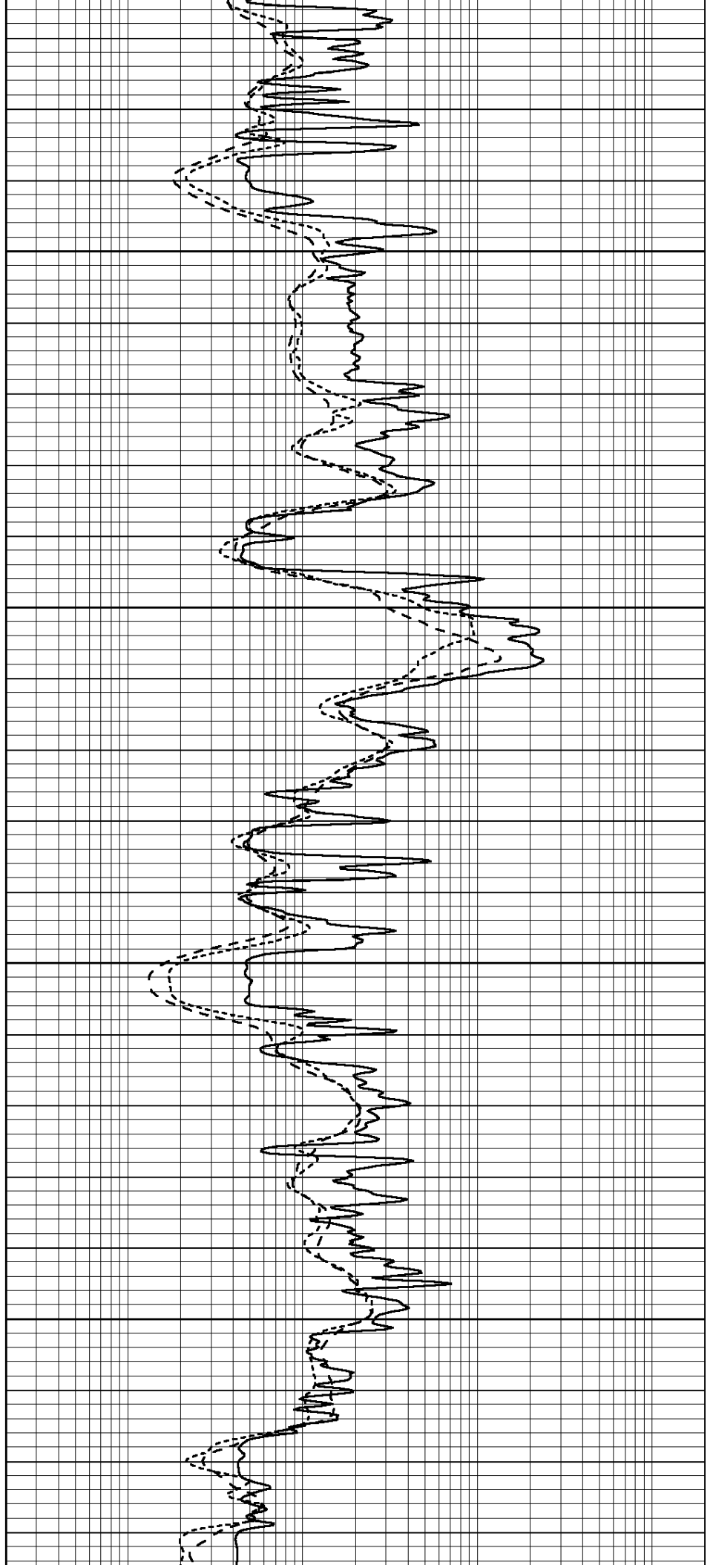


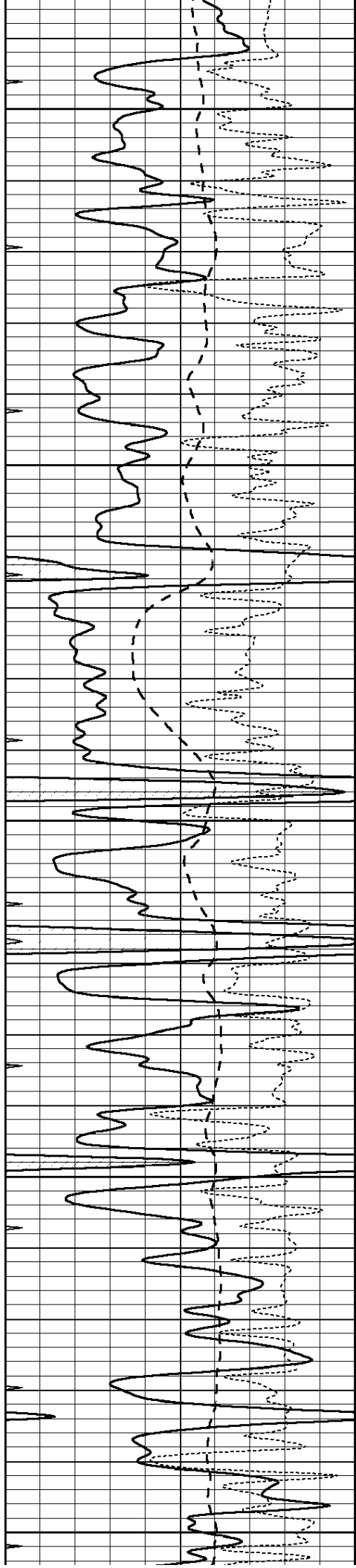
4850

4900

4950

5000





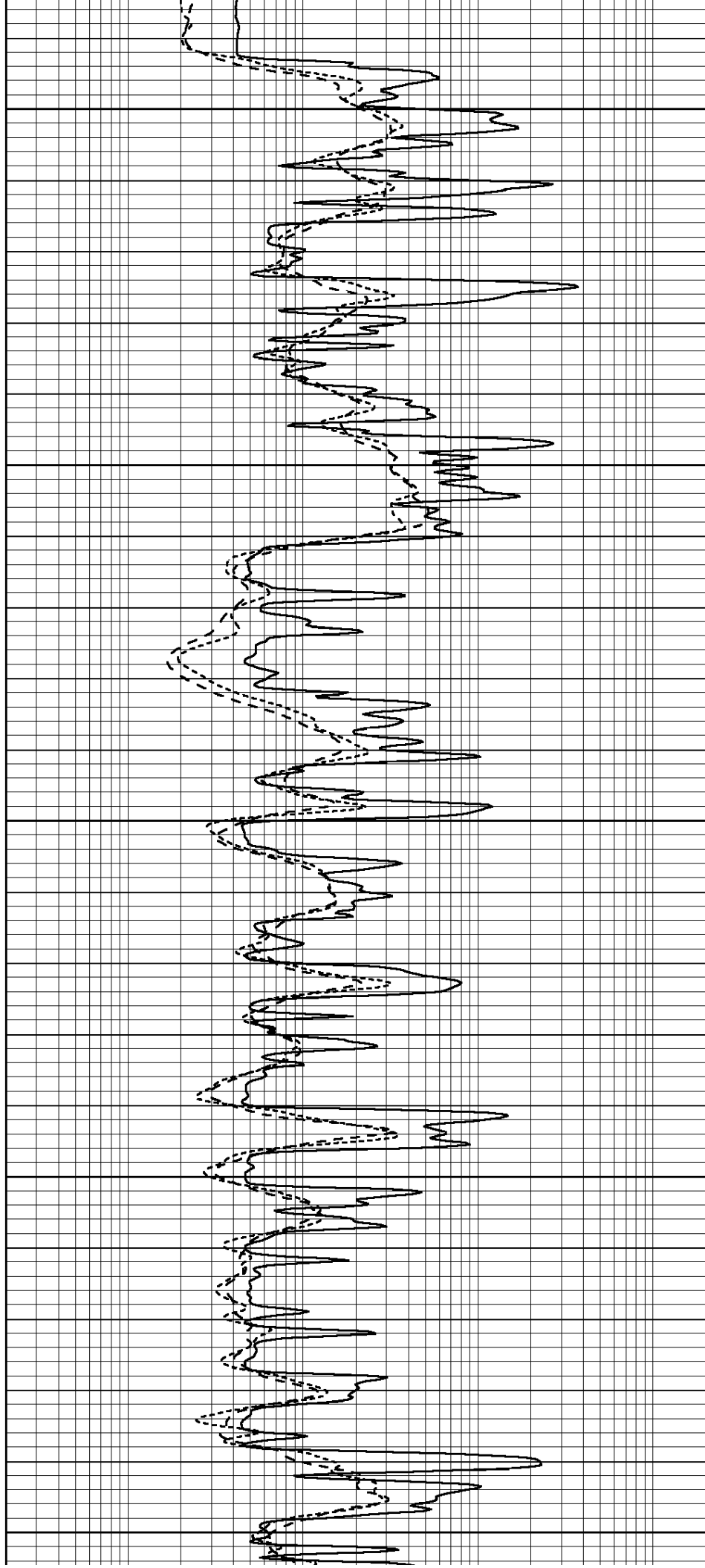
5050

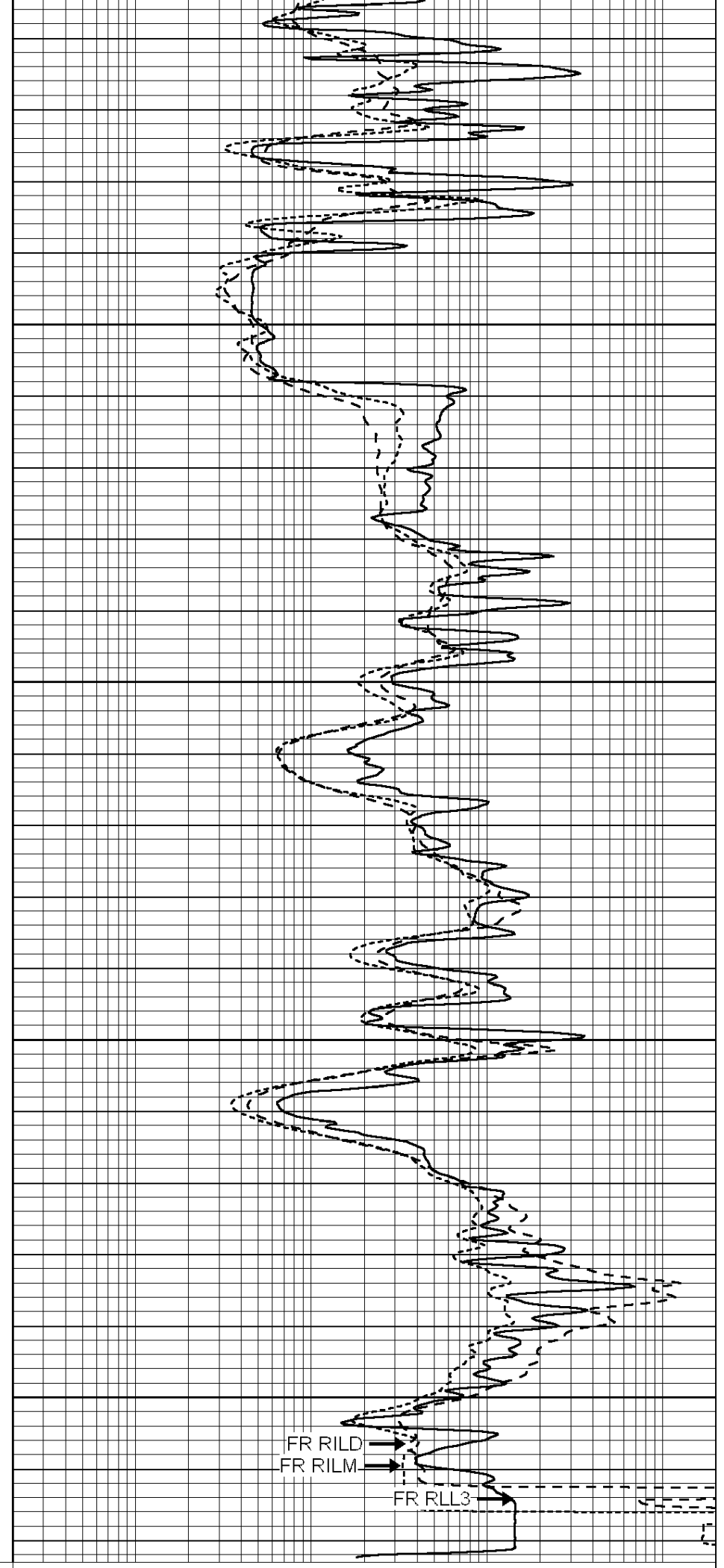
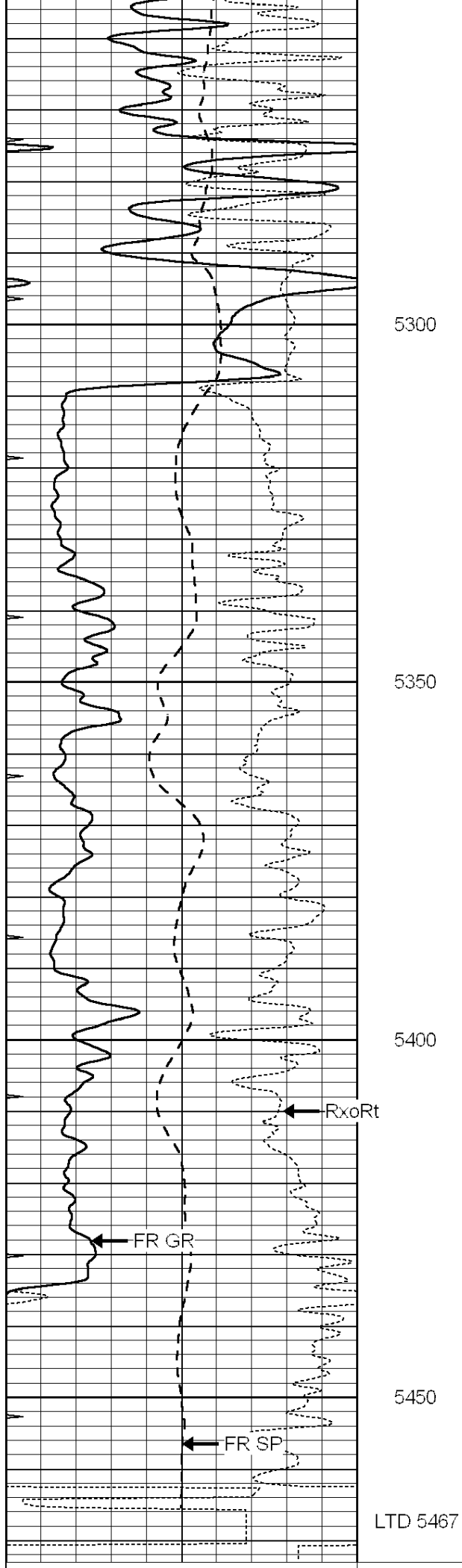
5100

5150

5200

5250





0	GAMMA RAY (GAPI)	150
-100	SP (mV)	100
-250	Rxo/Rt	50
0	MINMK	20

0.2	SHALLOW GUARD (Ohm-m)	2000
0.2	DEEP INDUCTION (Ohm-m)	2000
0.2	MEDIUM INDUCTION (Ohm-m)	2000



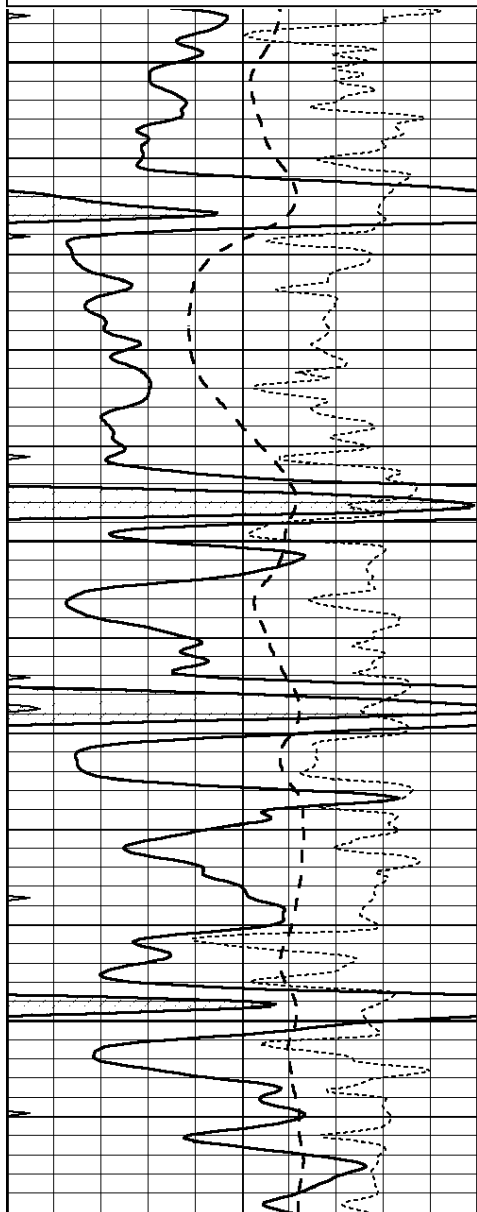
**COMPLETION
& PRODUCTION
SERVICES CO.**

REPEAT SECTION

Database File: 24555pe.db
 Dataset Pathname: pass2.1
 Presentation Format: _dil
 Dataset Creation: Fri Jul 18 10:33:53 2014 by Calc SOC 120430
 Charted by: Depth in Feet scaled 1:240

0	GAMMA RAY (GAPI)	150
-100	SP (mV)	100
-250	Rxo/Rt	50
0	MINMK	20

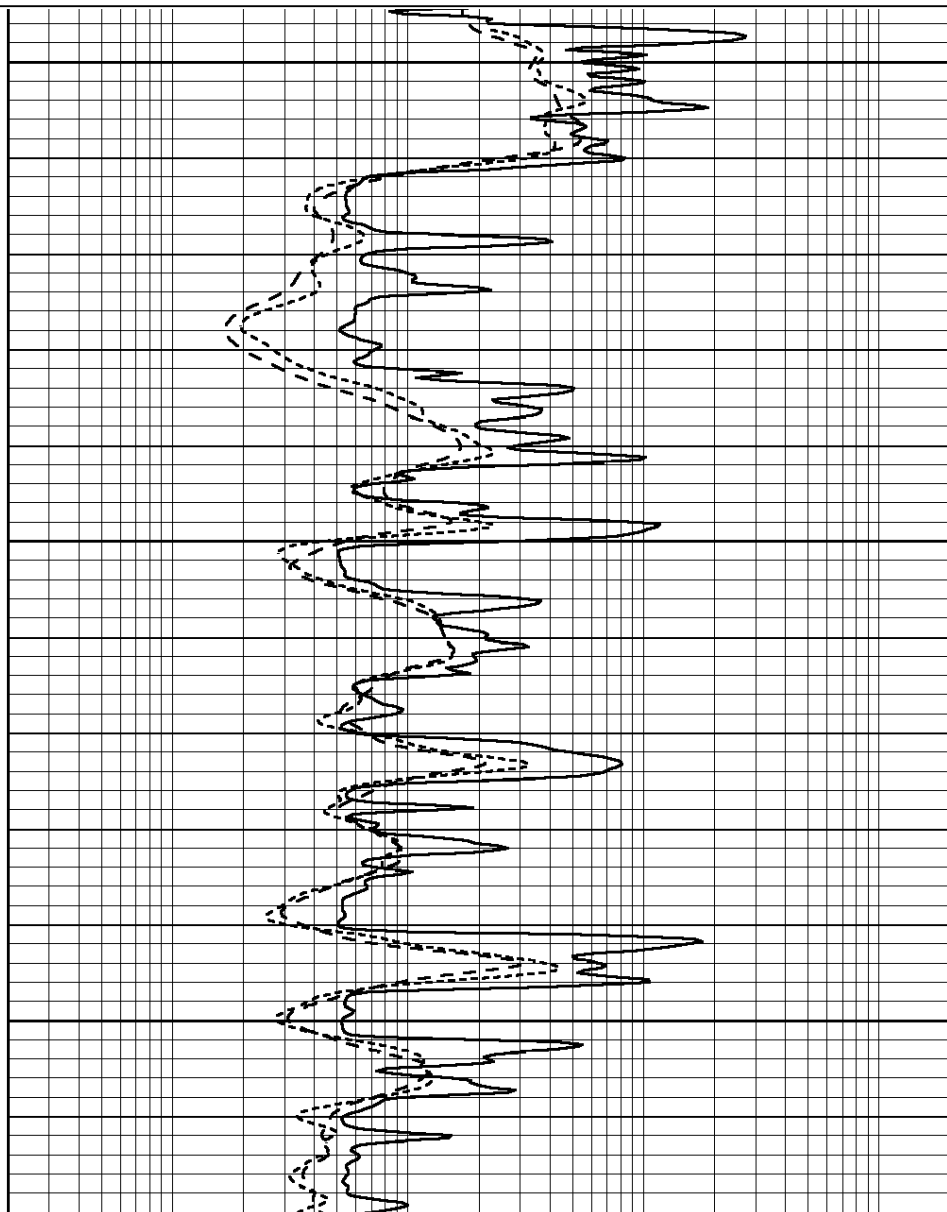
0.2	SHALLOW GUARD (Ohm-m)	2000
0.2	DEEP INDUCTION (Ohm-m)	2000
0.2	MEDIUM INDUCTION (Ohm-m)	2000

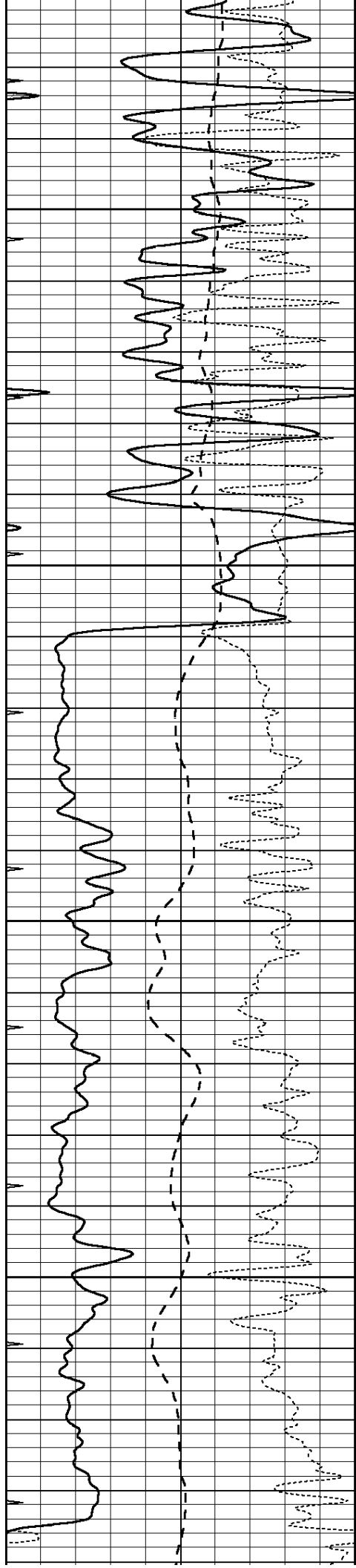


5100

5150

5200



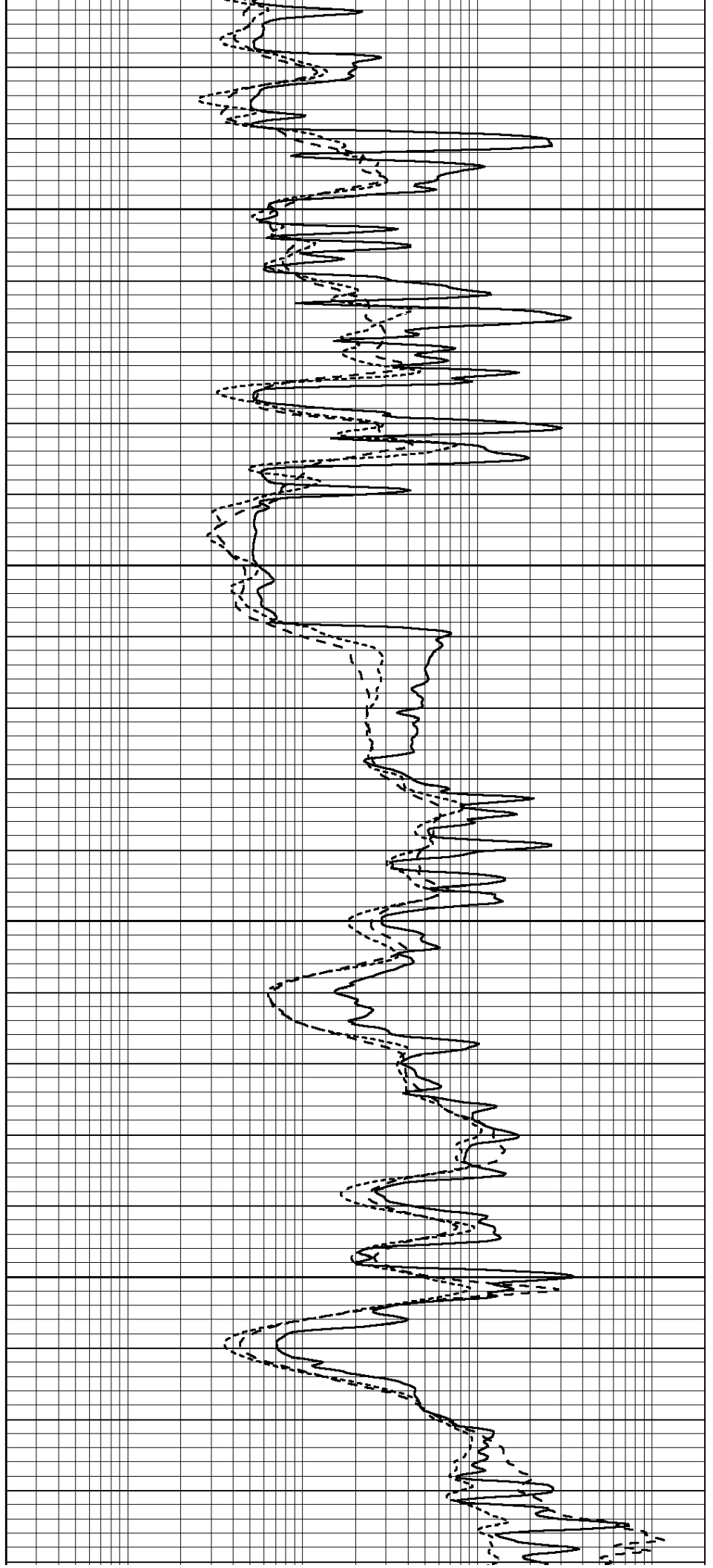


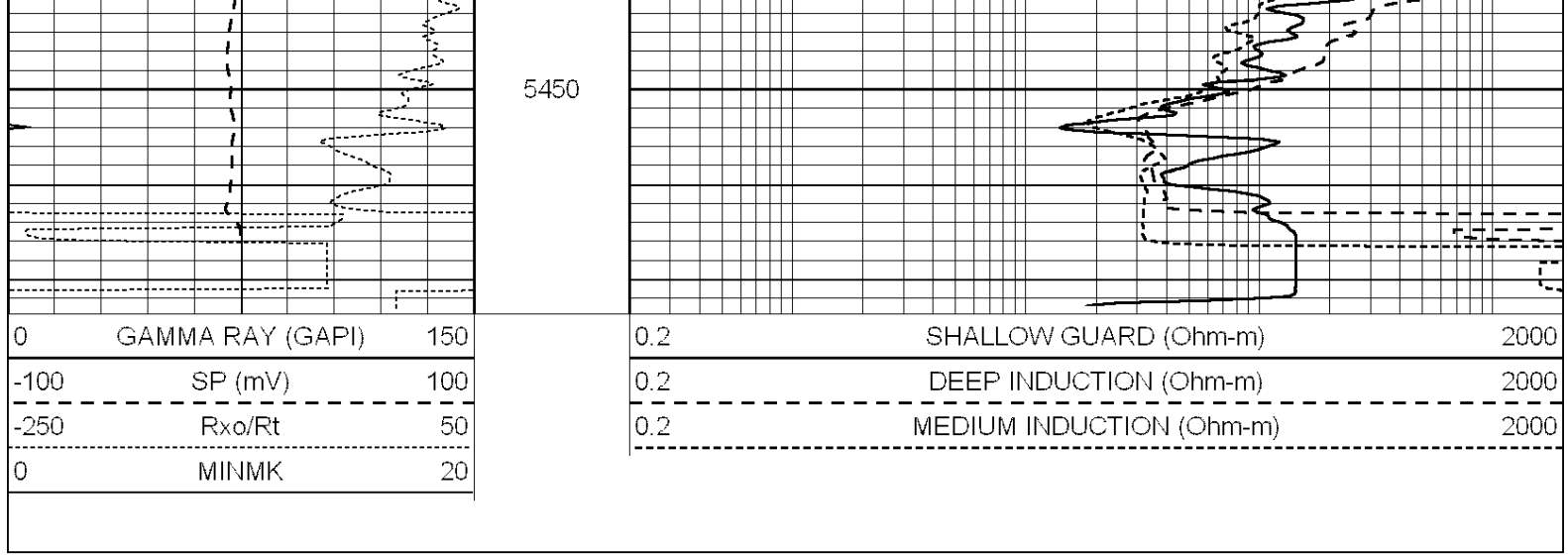
5250

5300

5350

5400





Calibration Report

Database File: 24555pe.db
 Dataset Pathname: pass3.3
 Dataset Creation: Fri Jul 18 13:30:40 2014 by Calc SOC 120430

Dual Induction Calibration Report

Serial-Model: PROBE9-DILG
 Surface Cal Performed: Tue Jul 15 18:19:28 2014
 Downhole Cal Performed: Mon Jul 28 12:02:56 2008
 After Survey Verification Performed: Mon Jul 28 12:02:56 2008

Surface Calibration									
Loop:	Readings				References			Results	
	Air	Loop			Air	Loop		m	b
Deep	-0.014	0.629	V	0.000	400.000	mmho/m	670.000	-20.000	
Medium	0.039	0.728	V	0.000	464.000	mmho/m	670.000	-25.000	
Internal:	Zero	Cal		Zero	Cal		m	b	
Deep	0.011	0.610	V	0.000	400.000	mmho/m	667.135	-7.256	
Medium	0.005	0.712	V	0.000	464.000	mmho/m	655.677	-3.102	

Downhole Calibration									
	Readings				References			Results	
	Zero	Cal			Zero	Cal		m'	b'
Deep	0.000	0.000	mmho/m	14.508	388.384	mmho/m	1.000	0.000	
Medium	0.000	0.000	mmho/m	166.367	504.400	mmho/m	1.000	0.000	
LL3		7.500	V		1400.000	Ohm-m			
		0.000	V		20.000	Ohm-m			
		-7.200	V		6500.000	mmho-m			

After Survey Verification									
	Readings				Targets			Results	
	Zero	Cal			Zero	Cal		m'	b'
Deep	0.000	0.000	mmho/m	0.000	0.000	mmho/m	0.000	0.000	
Medium	0.000	0.000	mmho/m	0.000	0.000	mmho/m	0.000	0.000	
LL3		1.000	Ohm-m		1.000	Ohm-m			
		0.000	Ohm-m		0.000	Ohm-m			
		1.000	mmho-m		1.000	mmho-m			

Litho Density Calibration Report
 Serial: 004N Model: PRB

Master Calibration

Performed Fri May 30 11:01:00 2014

	Background	Magnesium	Aluminum	Sandstone	
Window 1	1378.8	10804.6	3492.0	12453.4	cps
Window 2	1262.4	9313.5	3076.7	10594.7	cps
Window 3	1077.6	5668.7	2076.0	6314.8	cps
Window 4	306.4	313.0	306.4	315.6	cps
Long Space	0.0	8051.0	1814.3	9332.3	cps
Short Space	1.9	1706.1	1146.0	1707.6	cps
Rho		1.7100	2.5900	1.3800	g/cc
Pe		0.0000	2.5700	1.5500	
Rib Angle	: 45.0	Rib Slope	: 1.002	Density/Spine Ratio	: 0.571
Spine Angle	: 75.0	Spine Slope	: 3.745	Spine Intercept	: -18.9

Before Survey Verification

Performed Wed Dec 31 18:00:00 1969

Window 1	0.0	0.0	0.0	0.0	cps
Window 2	0.0	0.0	0.0	0.0	cps
Window 3	0.0	0.0	0.0	0.0	cps
Window 4	0.0	0.0	0.0	0.0	cps
Long Space	0.0	0.0	0.0	0.0	cps
Short Space	0.0	0.0	0.0	0.0	cps
Measured Rho		0.0000	0.0000	0.0000	g/cc
Measured Correction		0.0000	0.0000	0.0000	g/cc
Measured Pe			0.0000	0.0000	

After Survey Verification

Performed Wed Dec 31 18:00:00 1969

Window 1	0.0	0.0	0.0	0.0	cps
Window 2	0.0	0.0	0.0	0.0	cps
Window 3	0.0	0.0	0.0	0.0	cps
Window 4	0.0	0.0	0.0	0.0	cps
Long Space	0.0	0.0	0.0	0.0	cps
Short Space	0.0	0.0	0.0	0.0	cps
Measured Rho		0.0000	0.0000	0.0000	g/cc
Measured Correction		0.0000	0.0000	0.0000	g/cc
Measured Pe			0.0000	0.0000	

Compensated Neutron Calibration Report

Serial Number: 070808
Tool Model: Probe

PRE-SURVEY VERIFICATION

Detector	Readings	Measured	Target
Short Space	cps		
Long Space	cps	pu	pu

POST-SURVEY VERIFICATION

Detector	Readings	Measured	Target
Short Space	cps		
Long Space	cps	pu	pu

Gamma Ray Calibration Report

Serial Number: 070558
Tool Model: OPEN_GR
Performed: Mon Jun 30 21:53:39 2014

Calibrator Value: 1.0 GAPI

Background Reading: 0.0 cps
Calibrator Reading: 1.0 cps

Sensitivity: 0.2800 GAPI/cps