



**COMPLETION  
& PRODUCTION  
SERVICES CO.**

**SONIC  
LOG**

Company THOMASON PETROLEUM INC.  
Well LAMBERT SE #11-1  
Field CRESSON  
County ROOKS State KANSAS

Company THOMASON PETROLEUM INC.  
Well LAMBERT SE #11-1  
Field CRESSON  
County ROOKS  
State KANSAS

Location: API #: 15-163-24248-00-00  
2235' FSL & 1655' FEL  
SW - NE - NW - SE  
SEC 11 TWP 9S RGE 20W  
Permanent Datum GROUND LEVEL Elevation 2118  
Log Measured From KELLY BUSHING 8' A.G.L.  
Drilling Measured From KELLY BUSHING  
Other Services  
CNL/CDL  
DIL/MEL  
Elevation  
K.B. 2126  
D.F. 2124  
G.L. 2118

Date	10/14/14		
Run Number	TWO		
Depth Driller	3720		
Depth Logger	3722		
Bottom Logged Interval	3712		
Top Log Interval	180		
Casing Driller	8 5/8 @ 221'		
Casing Logger	223'		
Bit Size	7.875		
Type Fluid in Hole	CHEMICAL MUD		
Density / Viscosity	9.1/44	CHLORIDES 1,400 PPM	
pH / Fluid Loss	10.0/7.6		
Source of Sample	FLOWLINE		
Rm @ Meas. Temp	1.00 @ 78F		
Rmf @ Meas. Temp	0.75 @ 78F		
Rmc @ Meas. Temp	1.20 @ 78F		
Source of Rmf / Rmc	MEASURED		
Rm @ BHT	0.70 @ 112F		
Time Circulation Stopped	2 HOURS		
Time Logger on Bottom			
Maximum Recorded Temperature	112F		
Equipment Number	3802		
Location	HAYS, KS.		
Recorded By	IAN MABB		
Witnessed By	KEITH REAVIS		

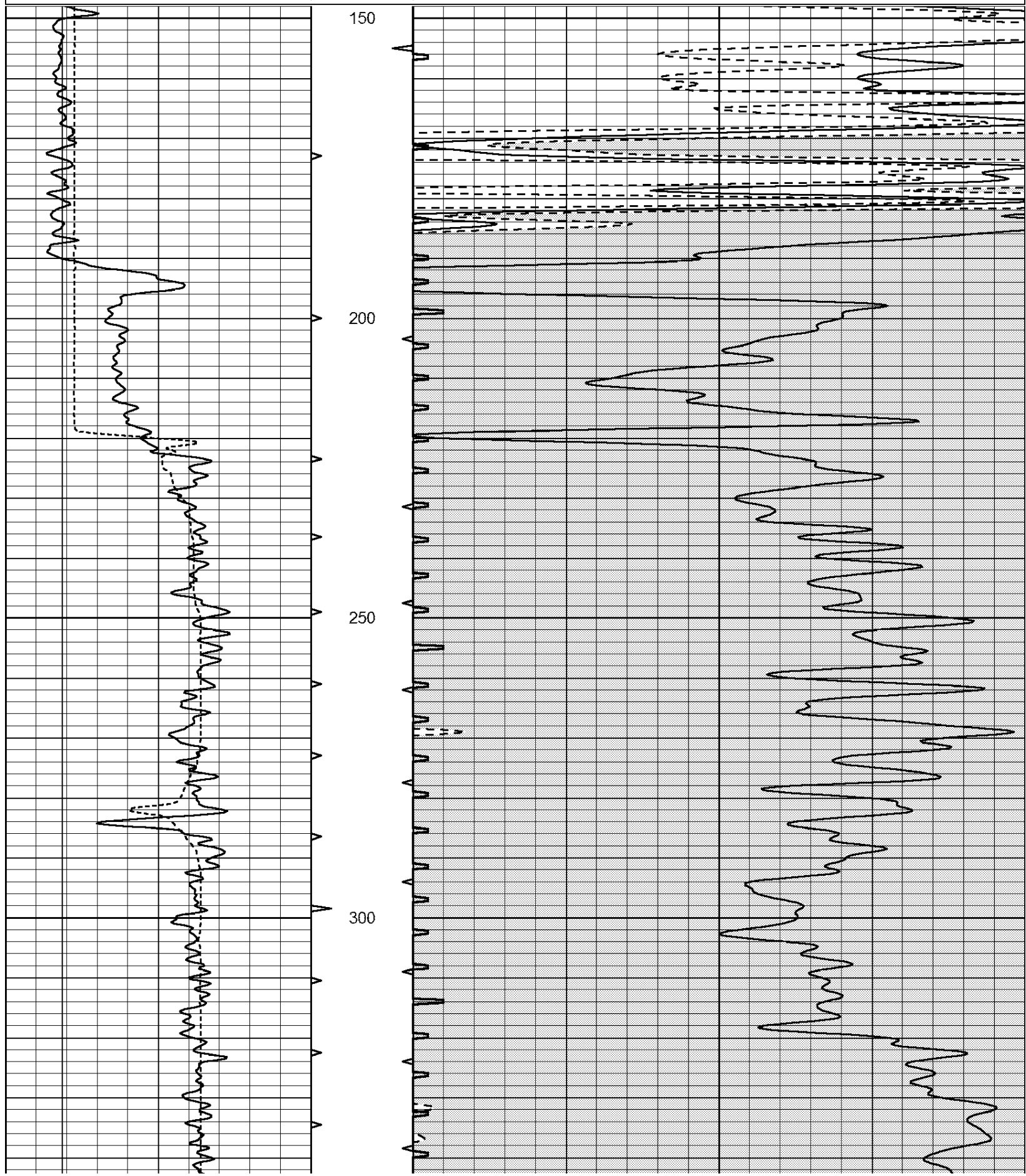
<<< Fold Here >>>

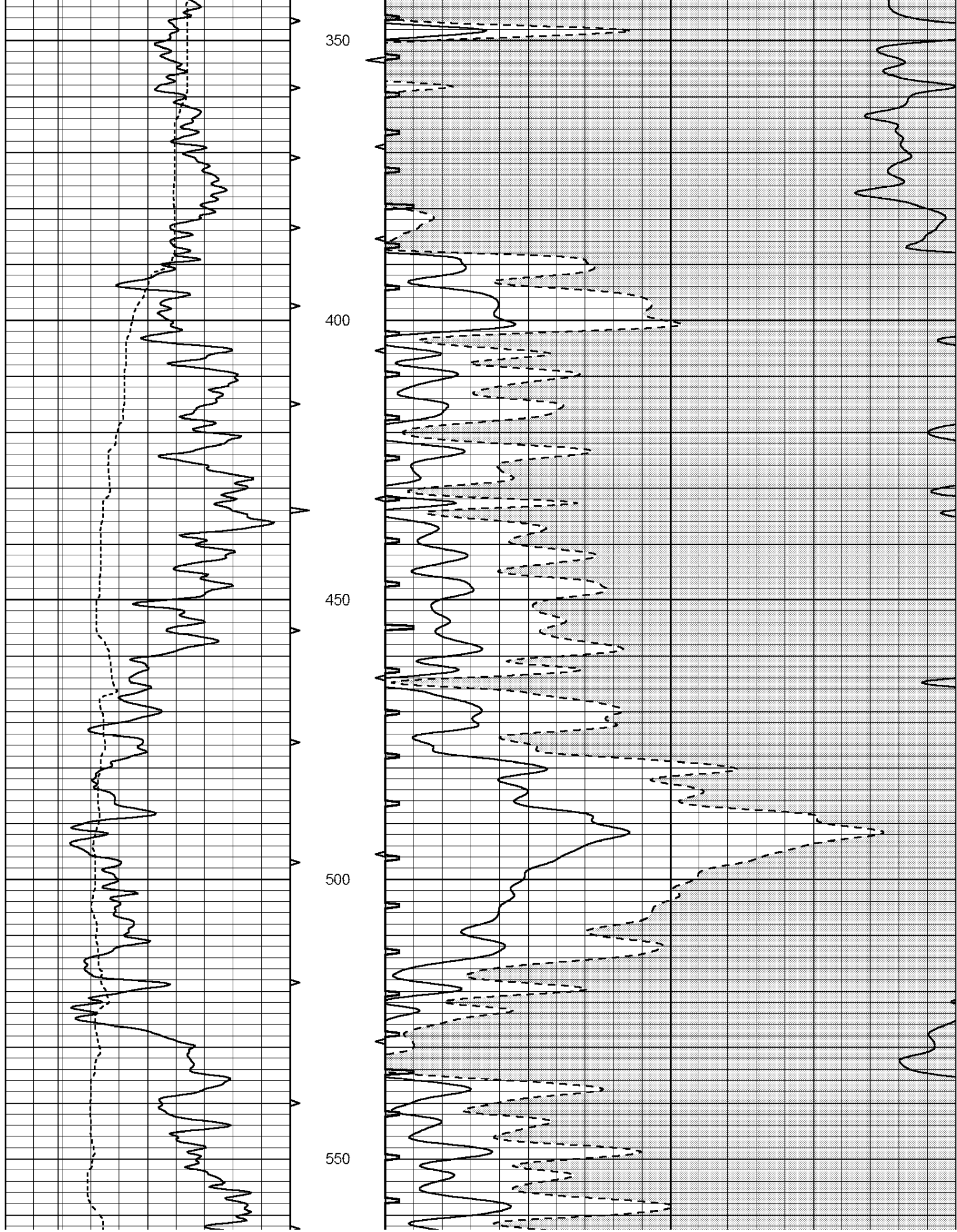
All interpretations are opinions based on inferences from electrical or other measurements and we cannot and do not guarantee the accuracy or correctness of any interpretation, and we shall not, except in the case of gross or willful negligence on our part, be liable or responsible for any loss, costs, damages, or expenses incurred or sustained by anyone resulting from any interpretation made by any of our officers, agents or employees. These interpretations are also subject to our general terms and conditions set out in our current Price Schedule.

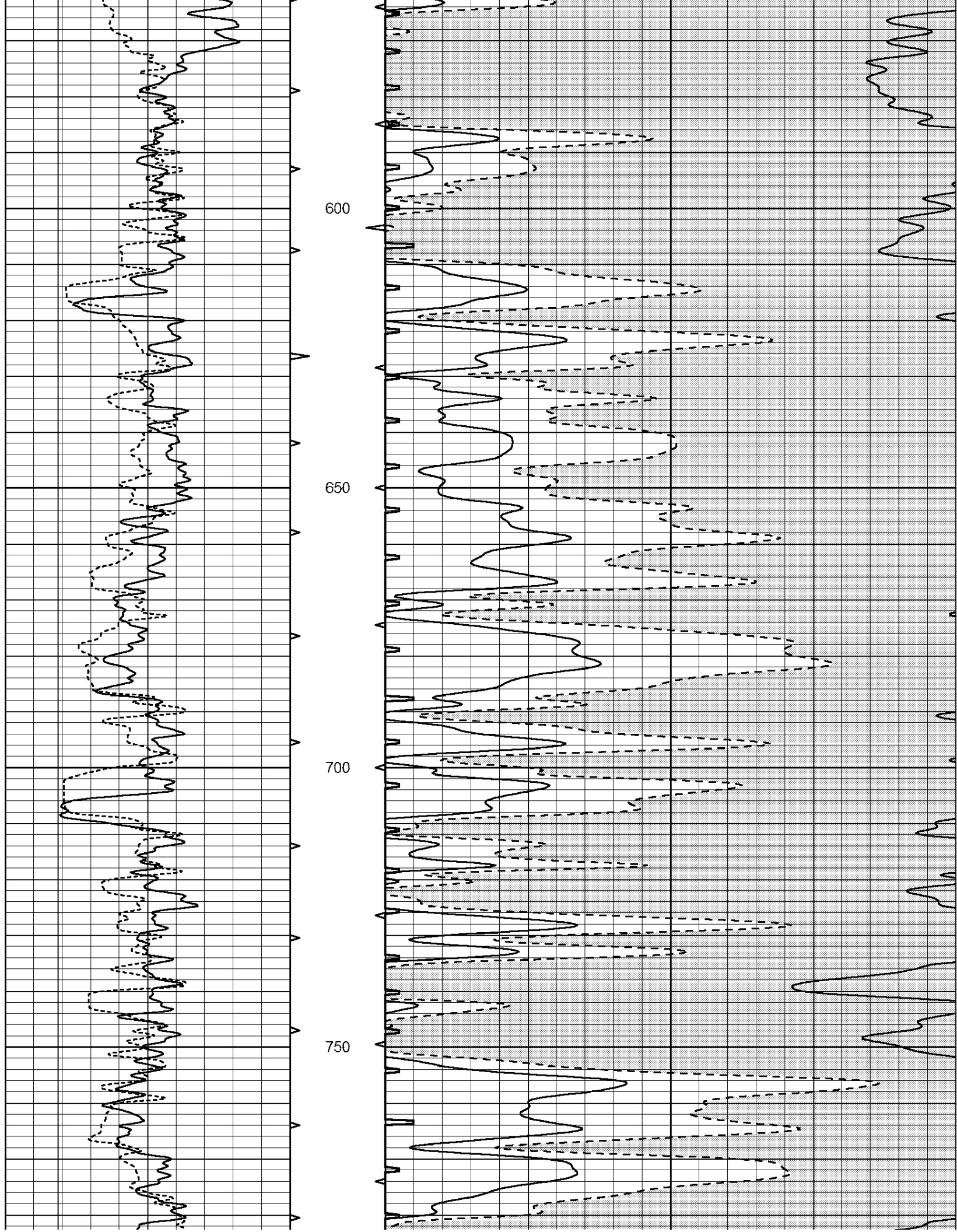
Comments

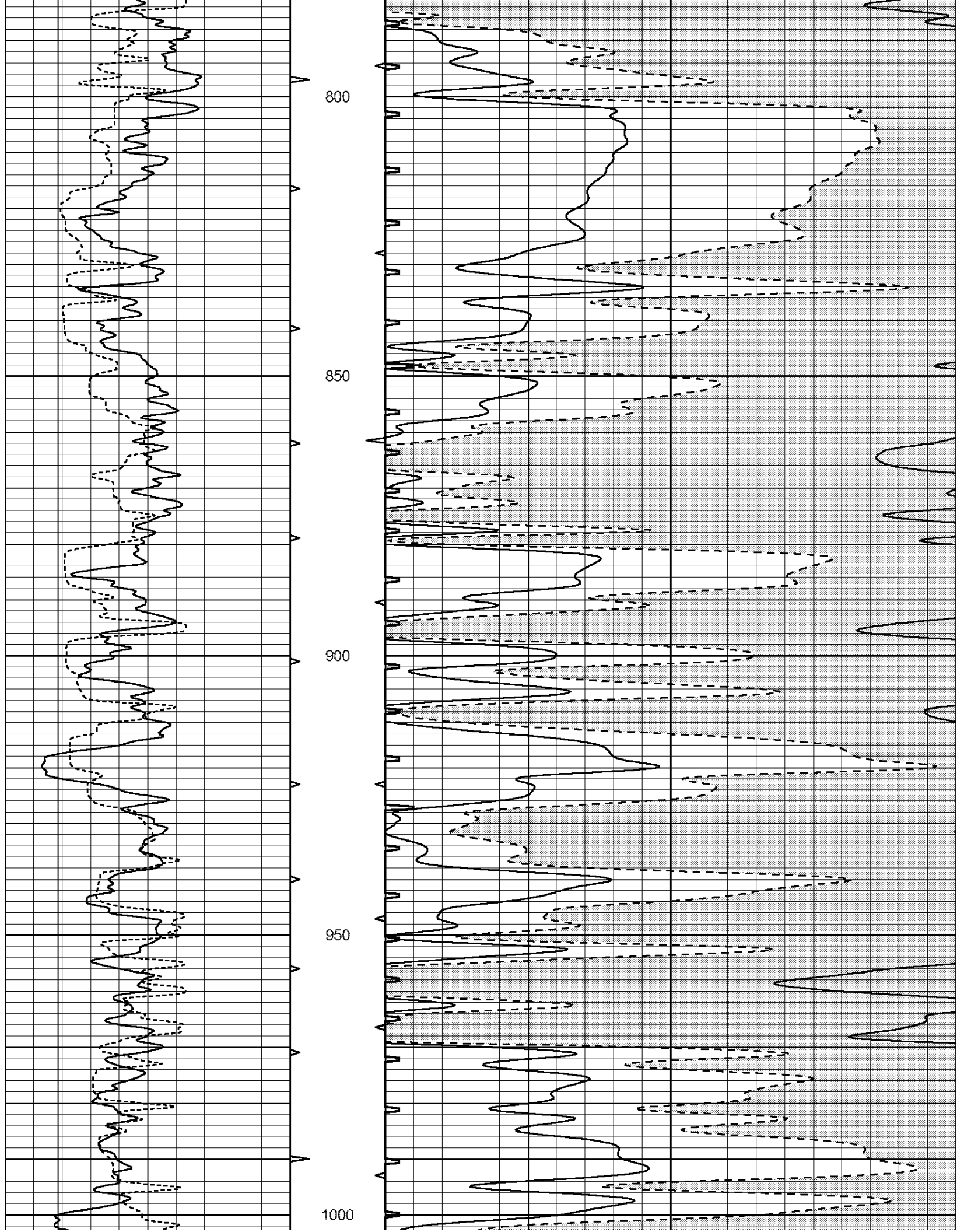
NABORS COMPLETION & PRODUCTION SERVICES CO.  
785 ( 628 - 6395 )  
THANK YOU FOR YOUR BUSINESS  
DIRECTIONS : ZURICH, KS. - 3 MILES NORTH - 4 MILES WEST - 1/2 MILE NORTH - WEST INTO

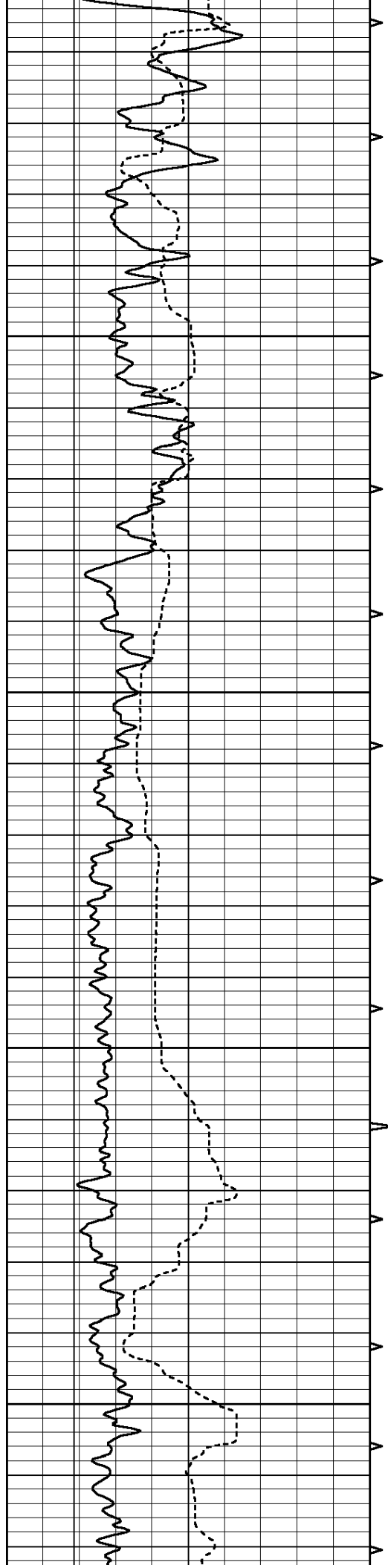
0	GAMMA RAY (GAPI)	150	ABHV	140	DELTA TIME (usec/ft)	40
6	CALIPER (in)	16	10 (ft3)	0 30	SONIC POROSITY (pu)	-10
			TBHV	0	ITT (msec)	20
			0 (ft3)	10		









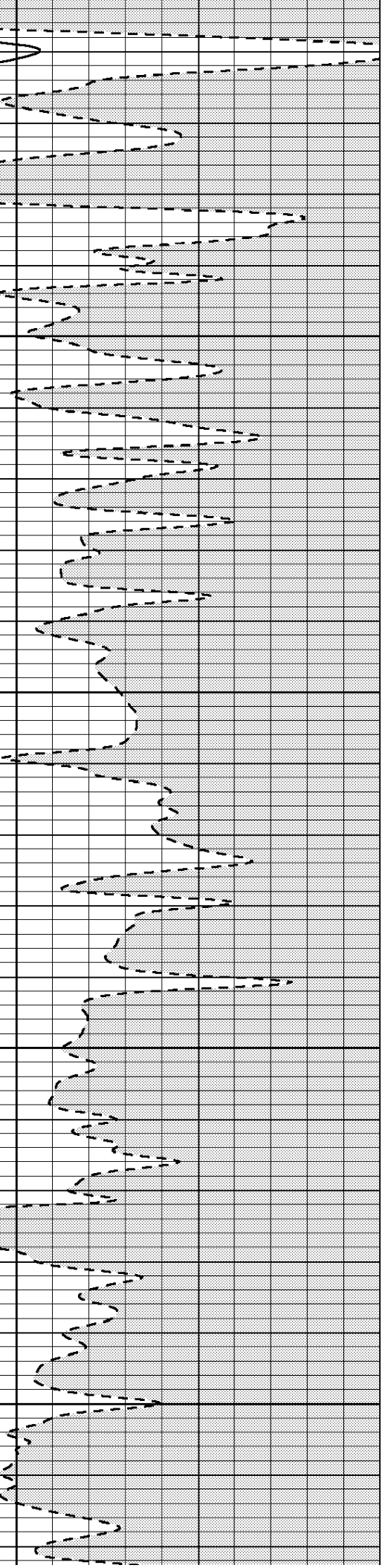
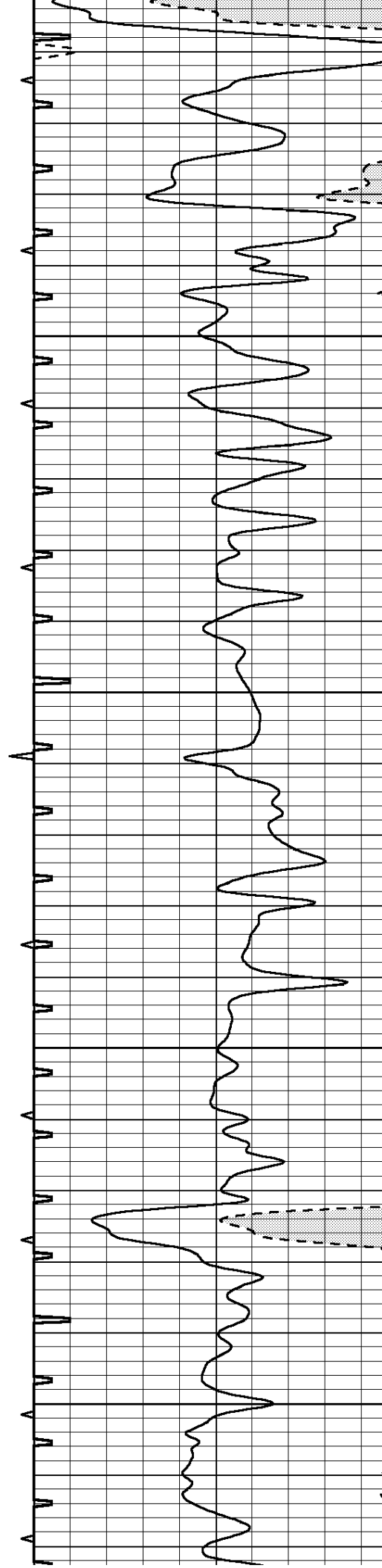


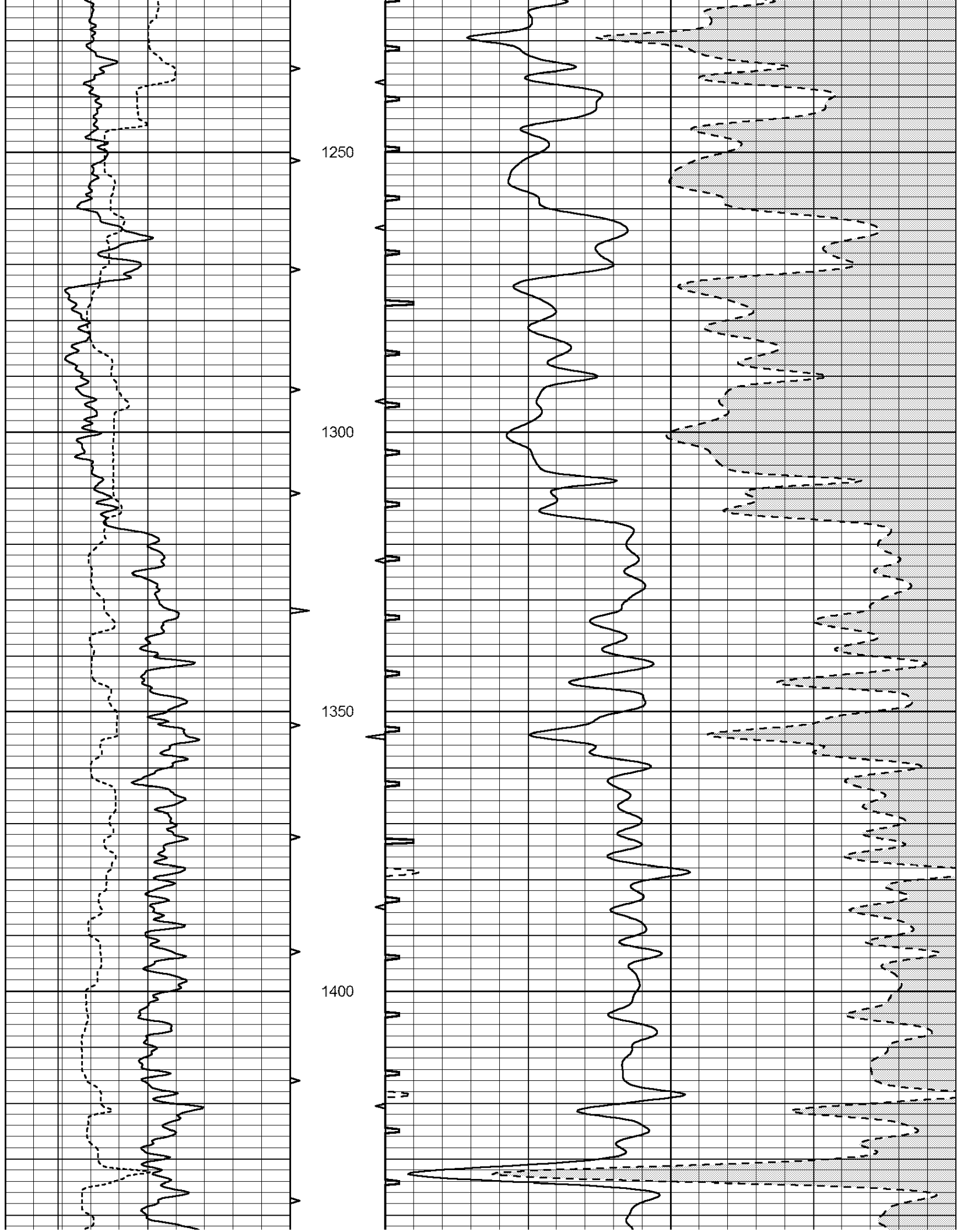
1050

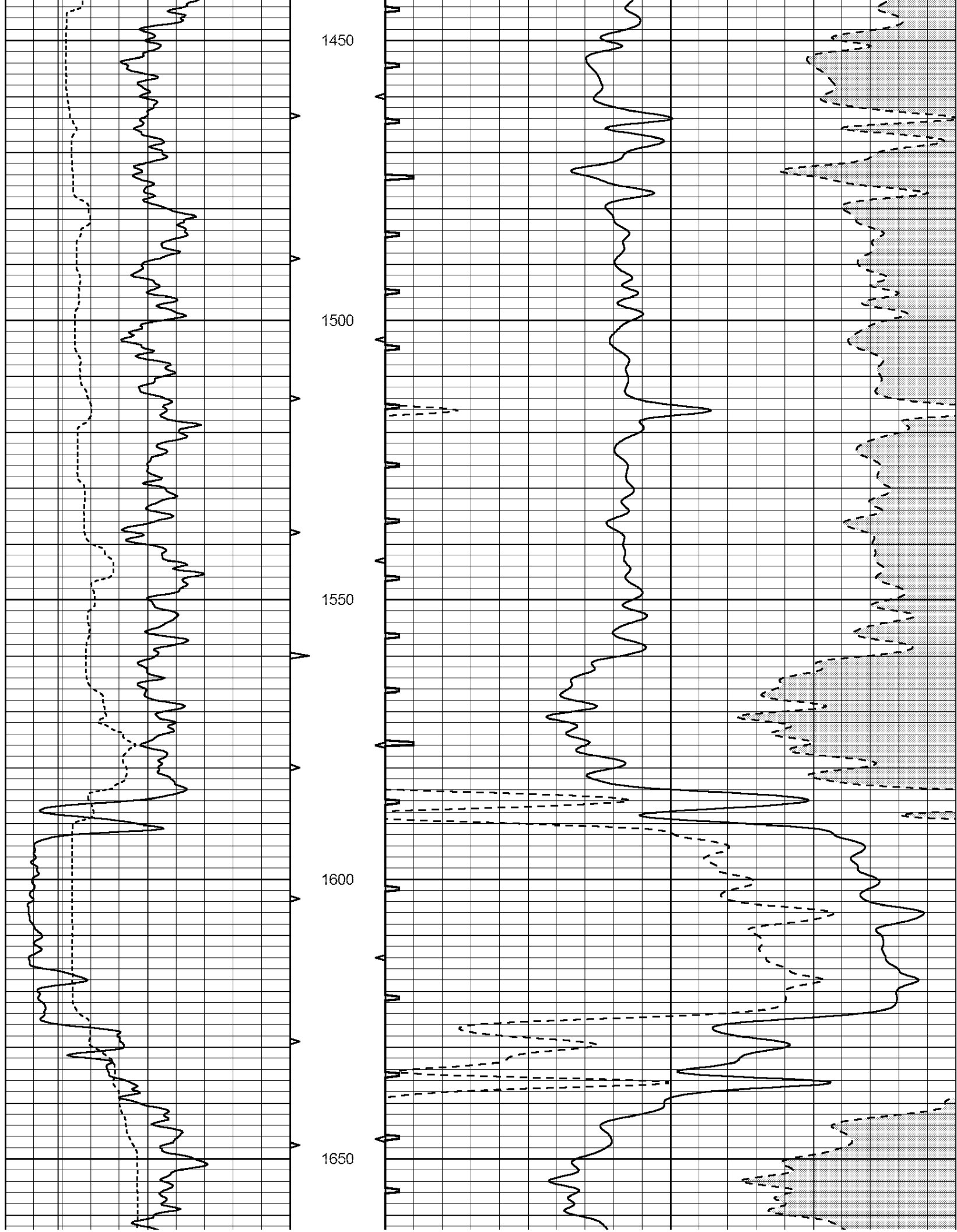
1100

1150

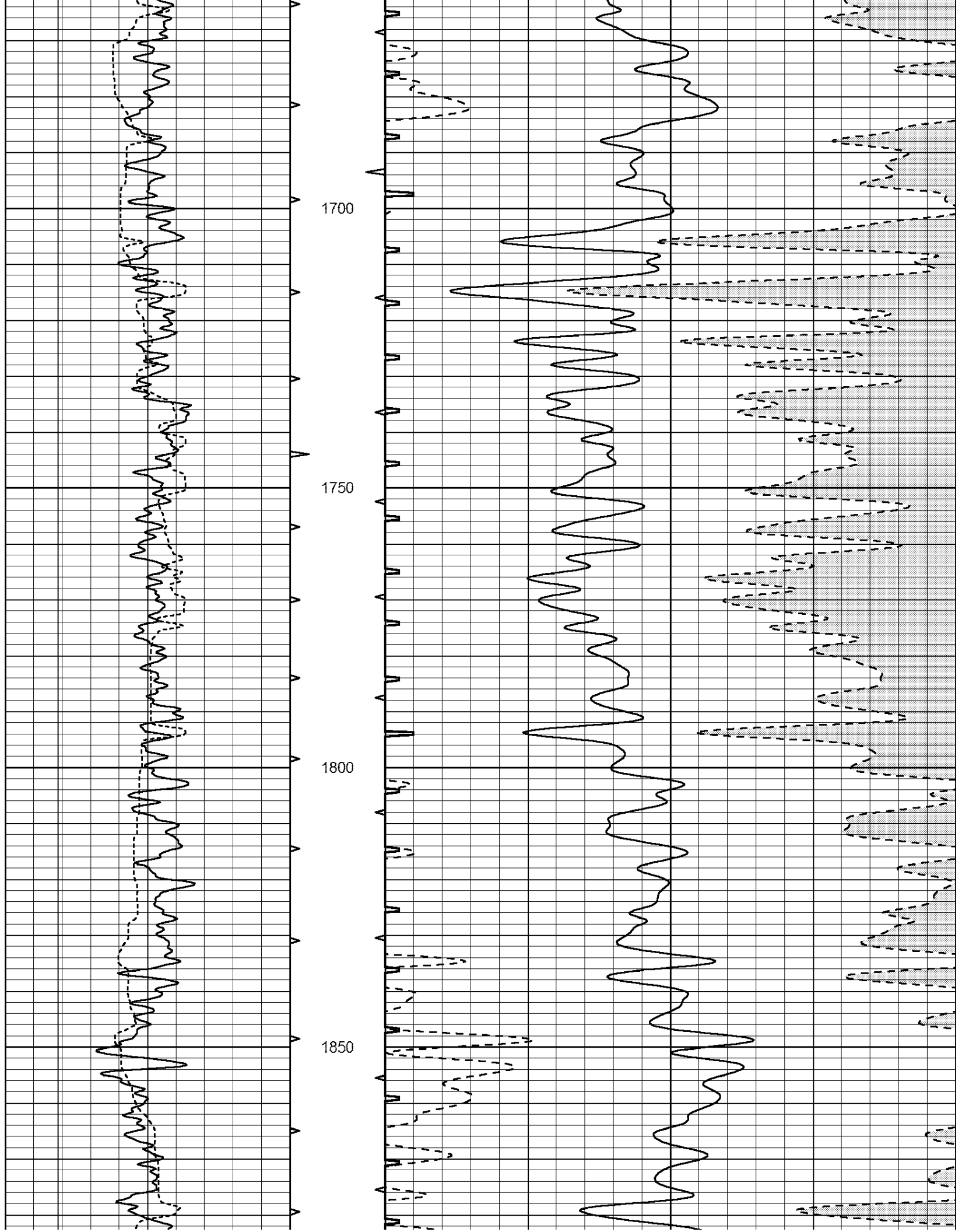
1200

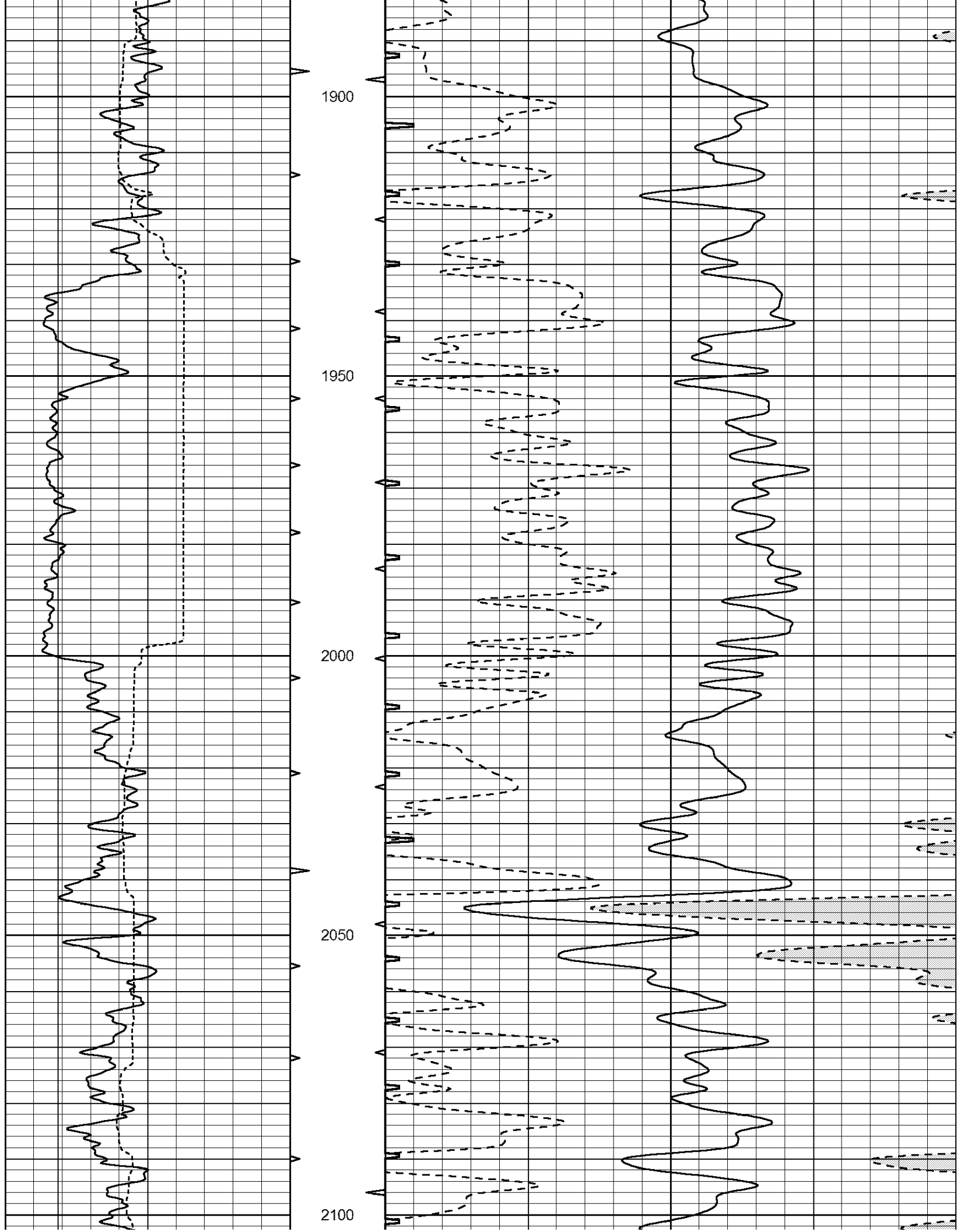


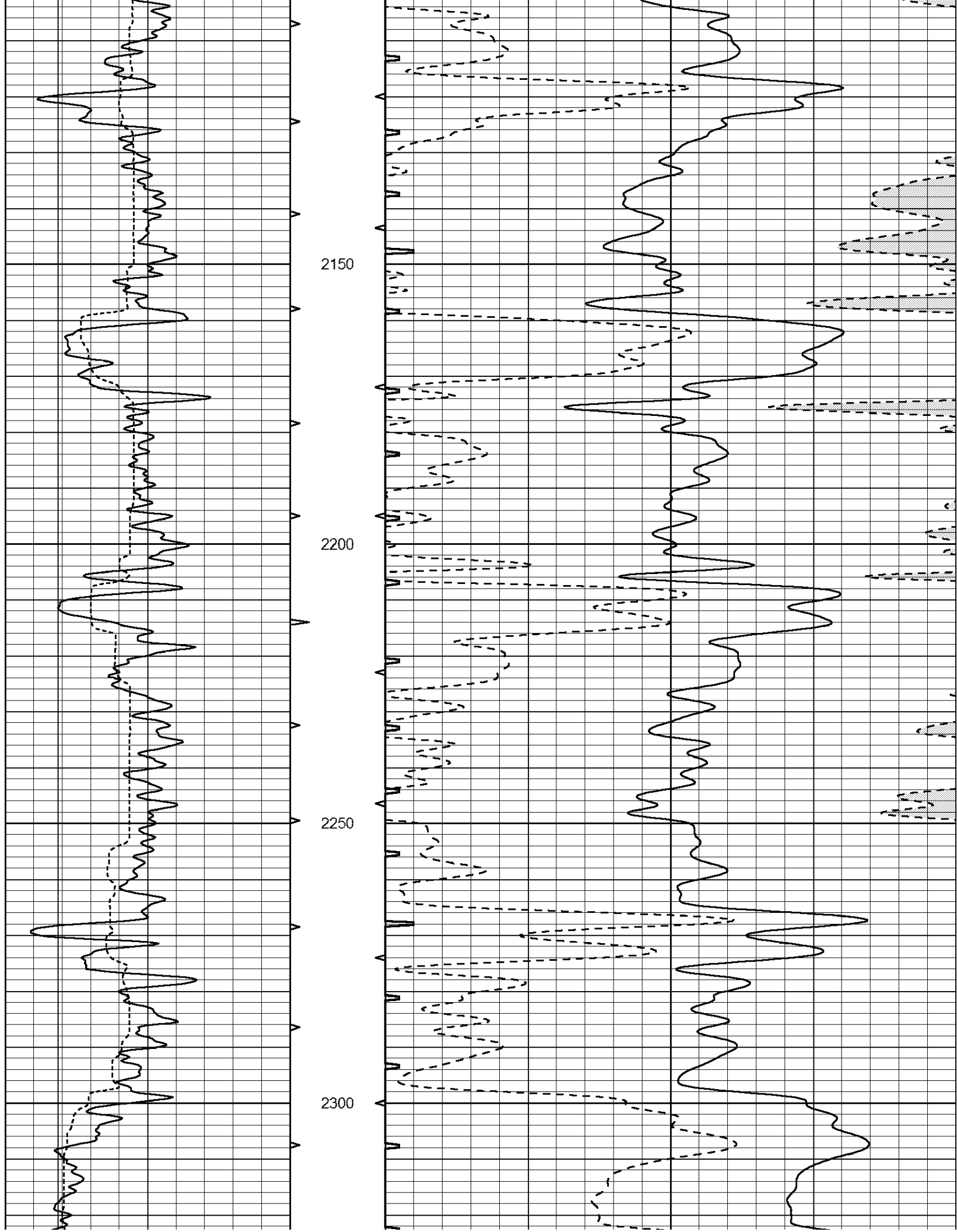


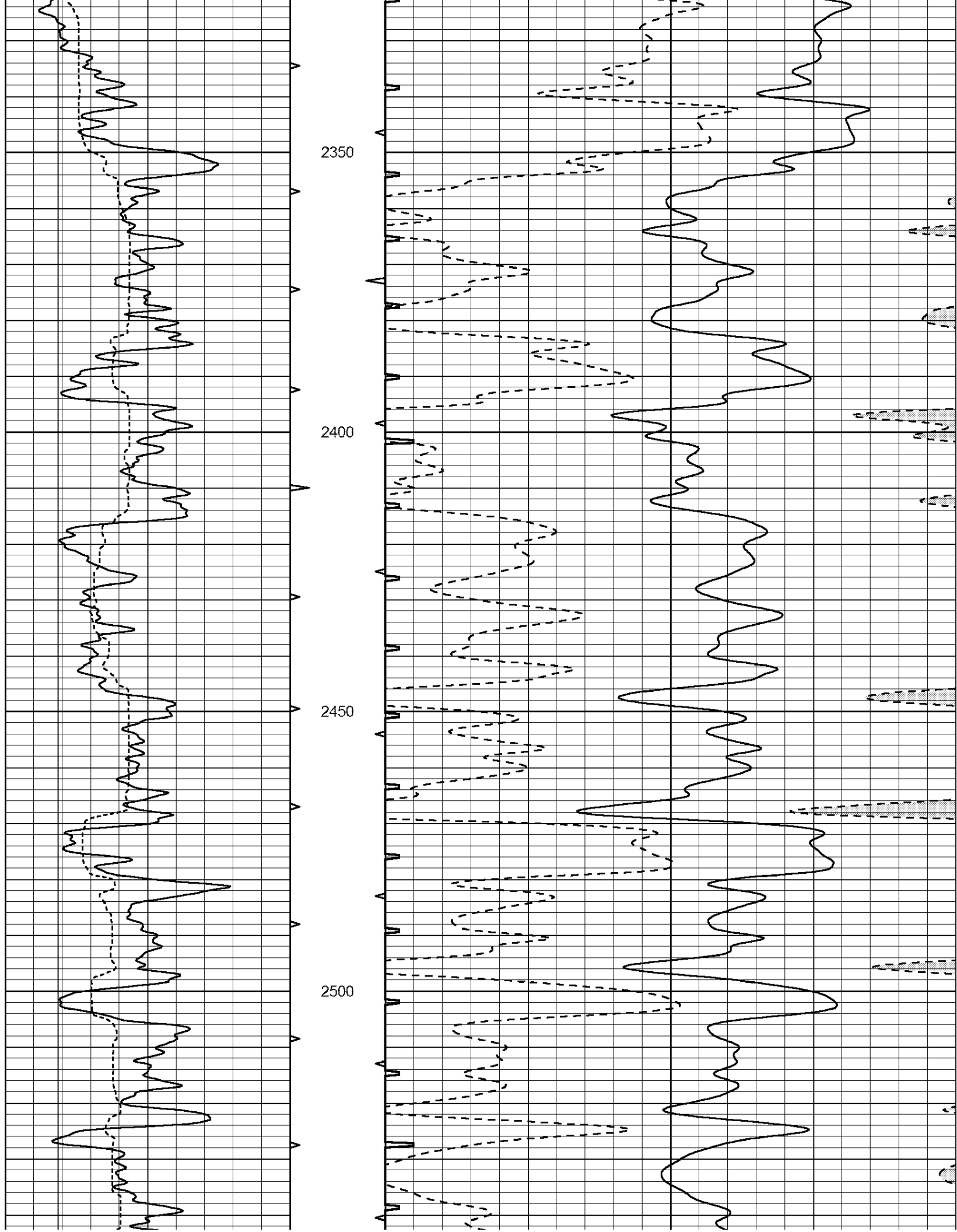


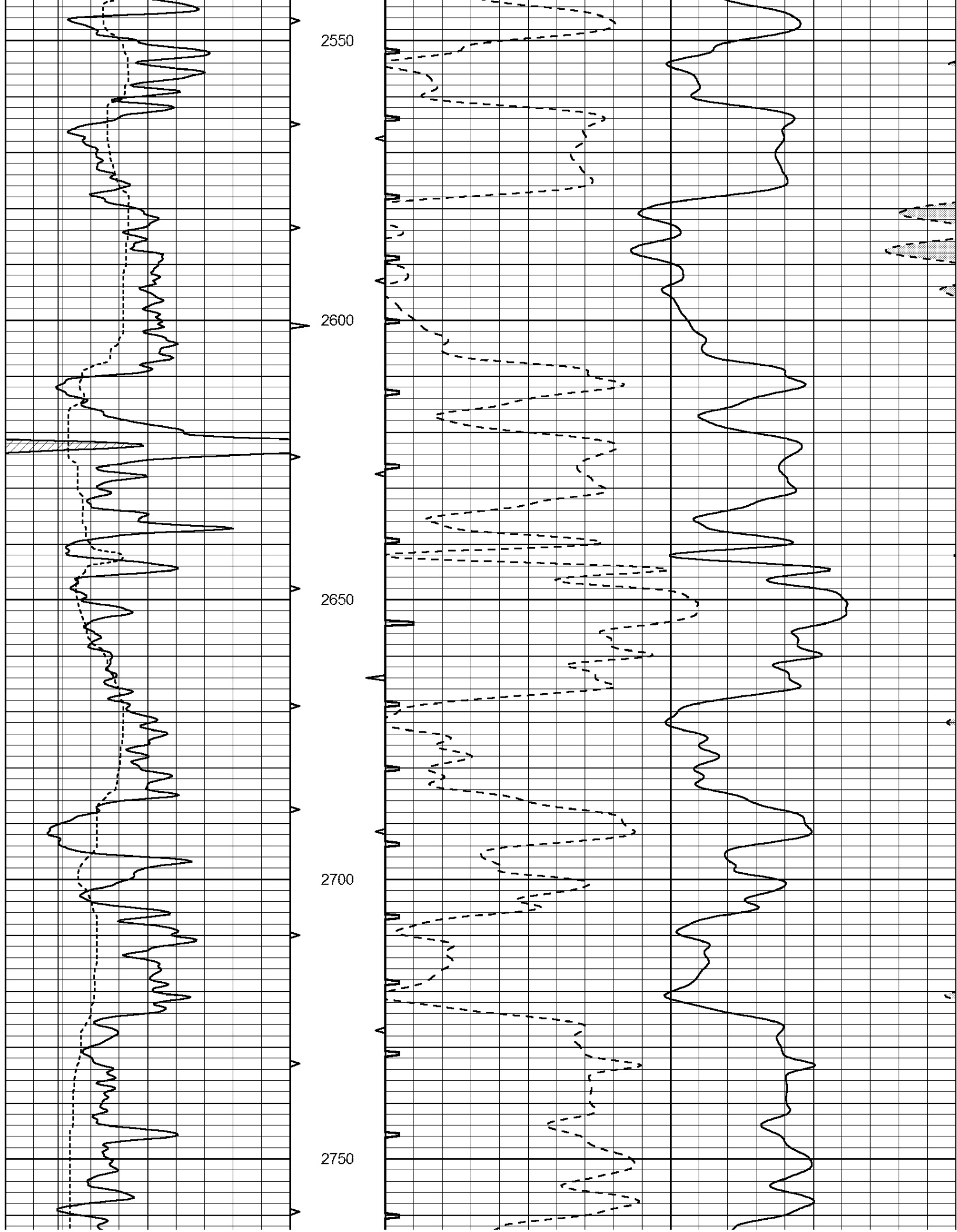


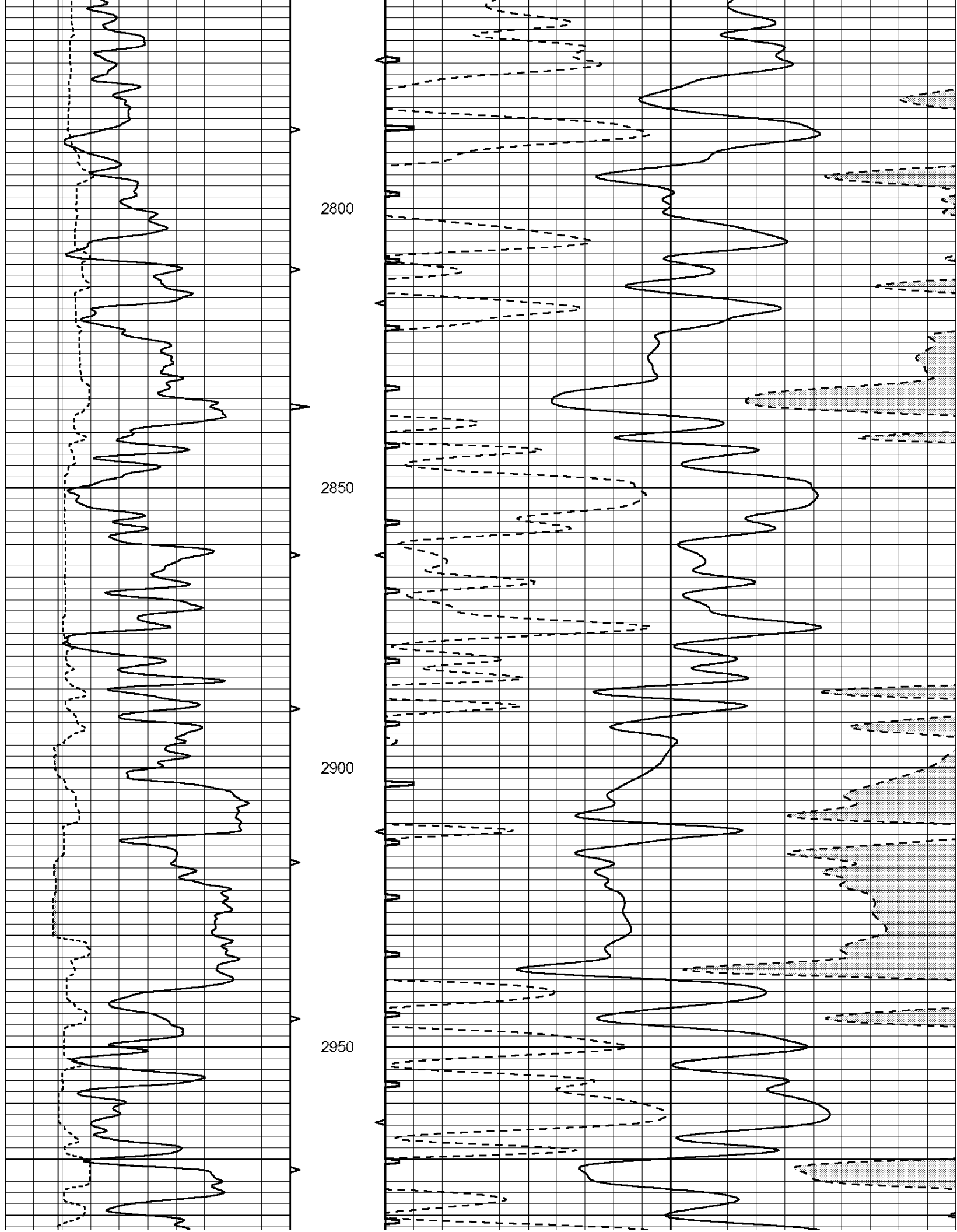


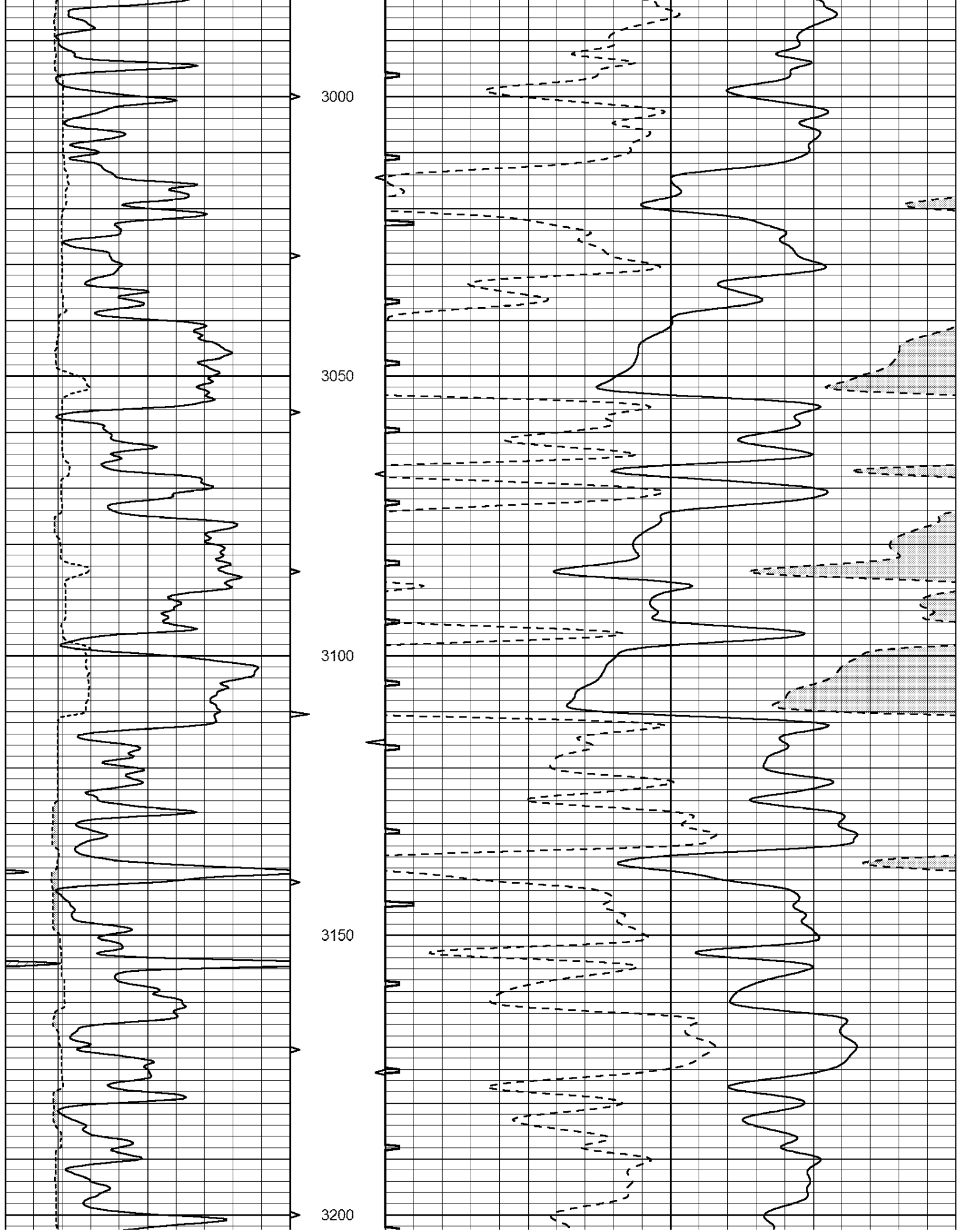


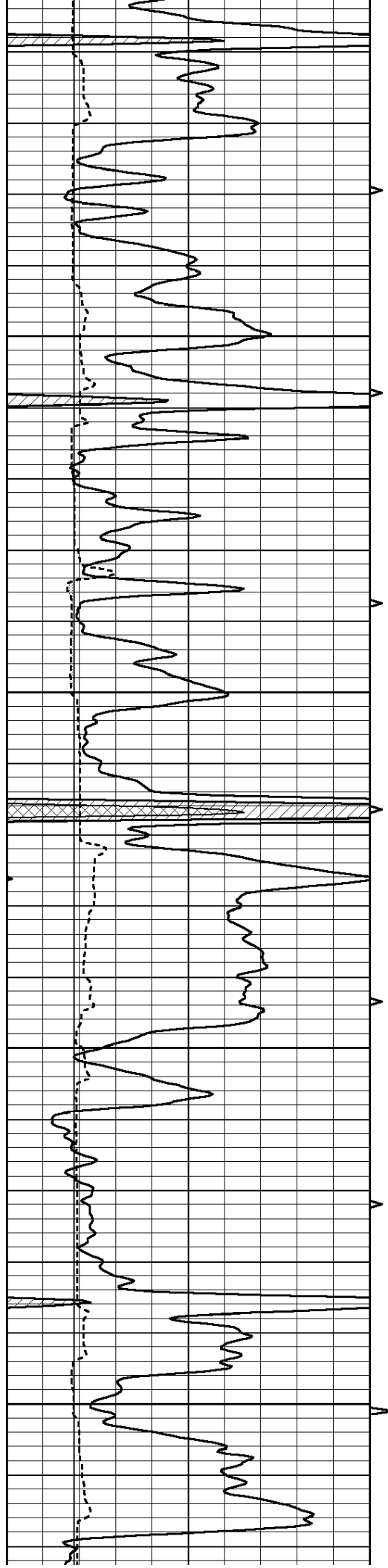










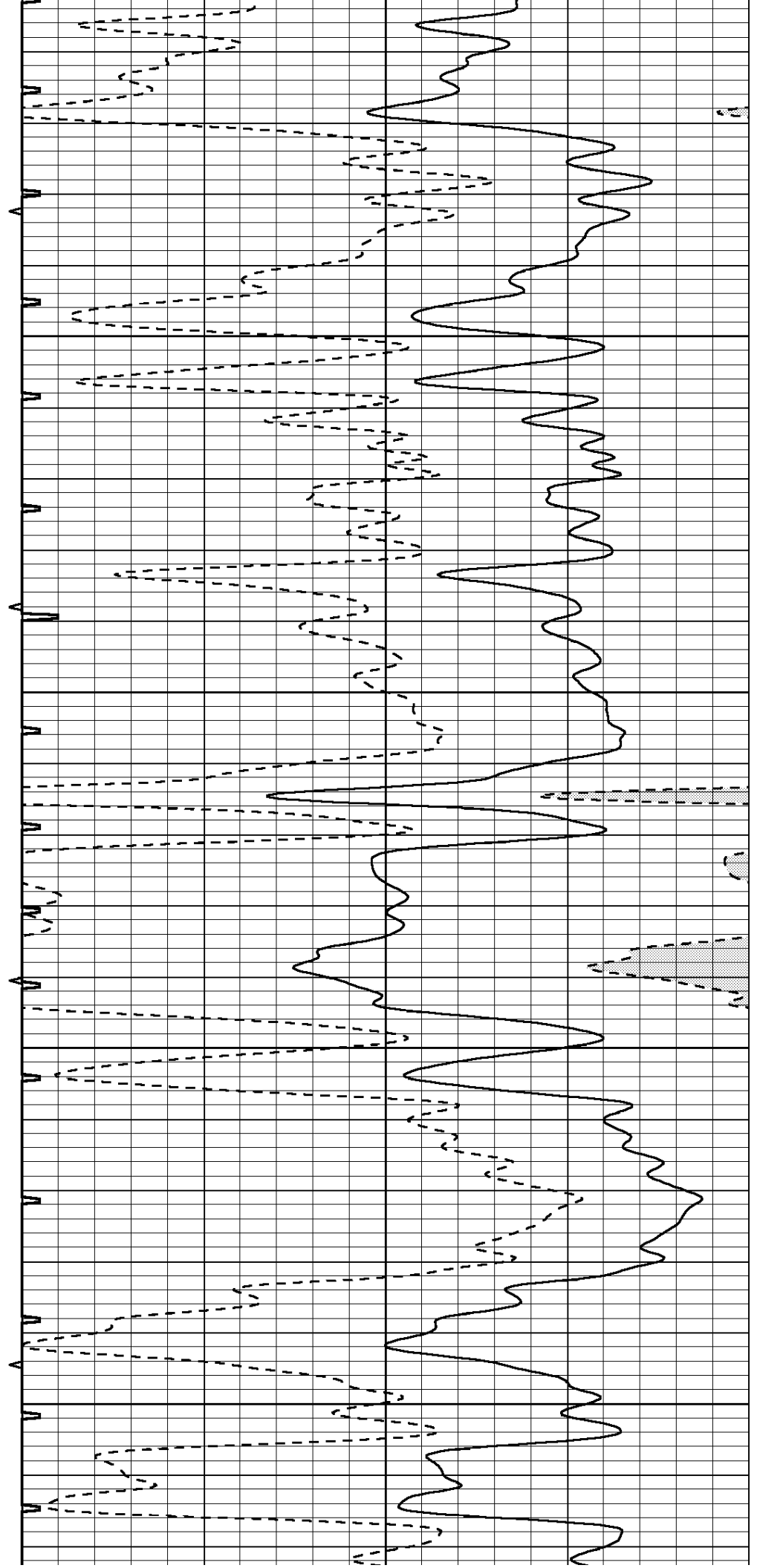


3250

3300

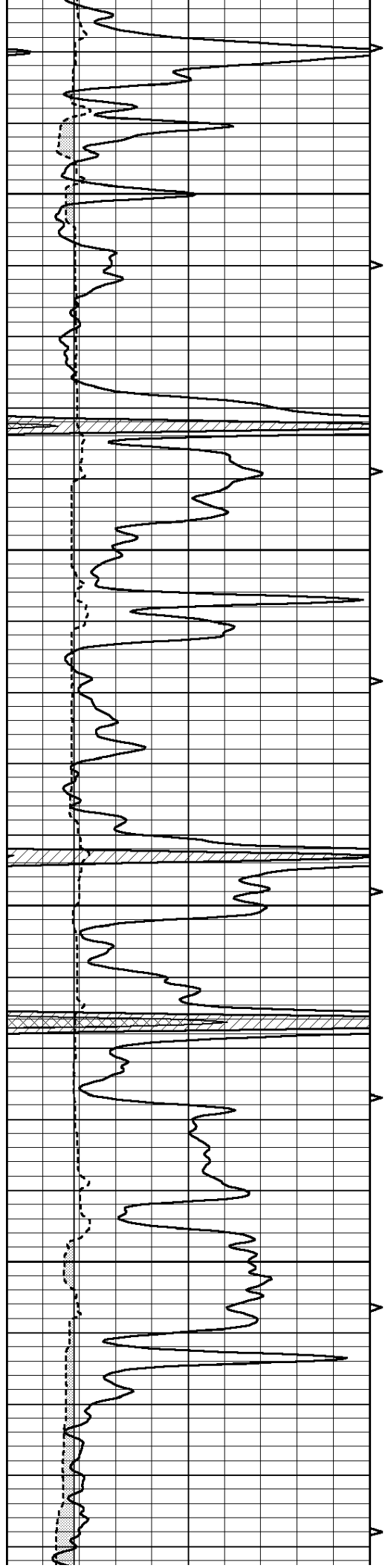
3350

3400



8



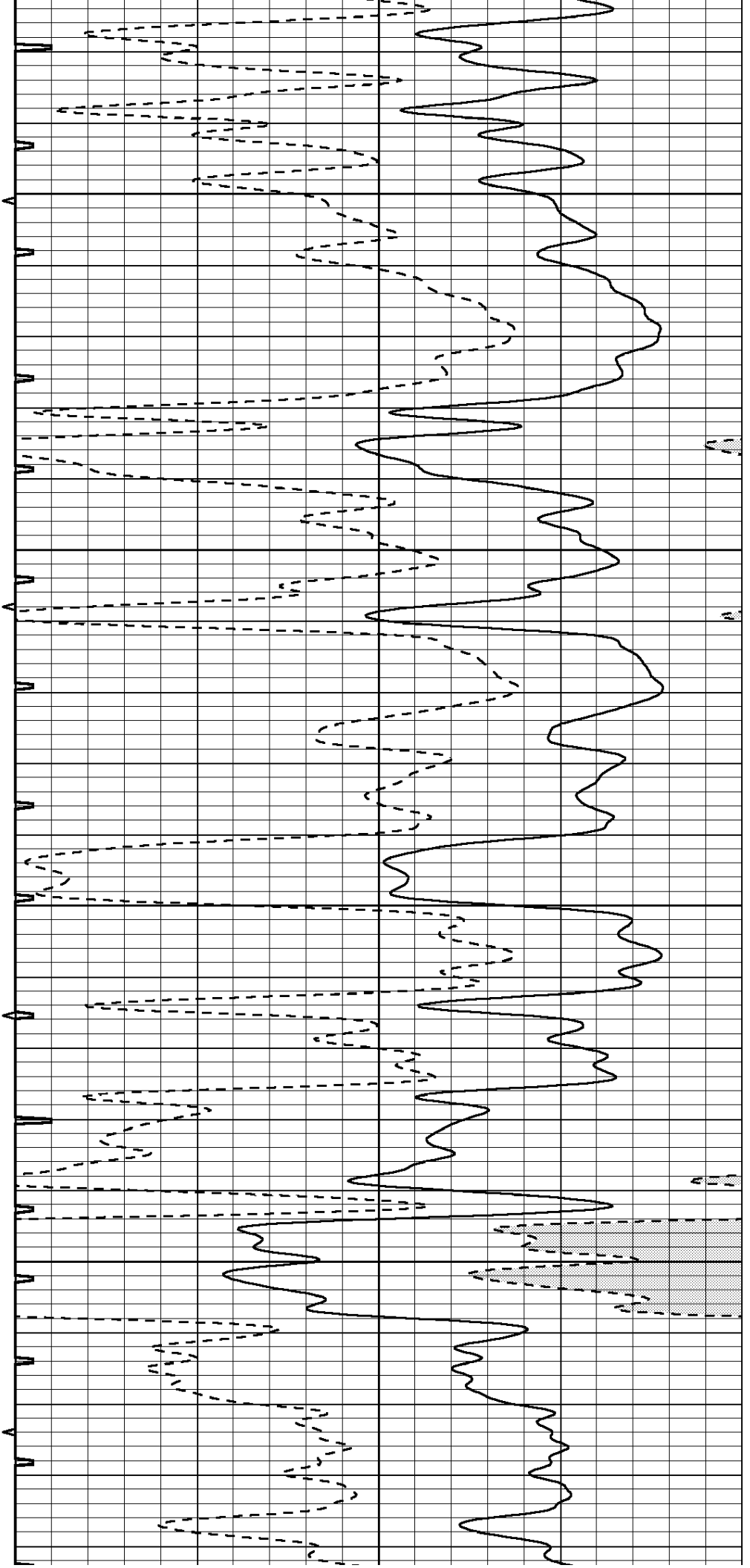


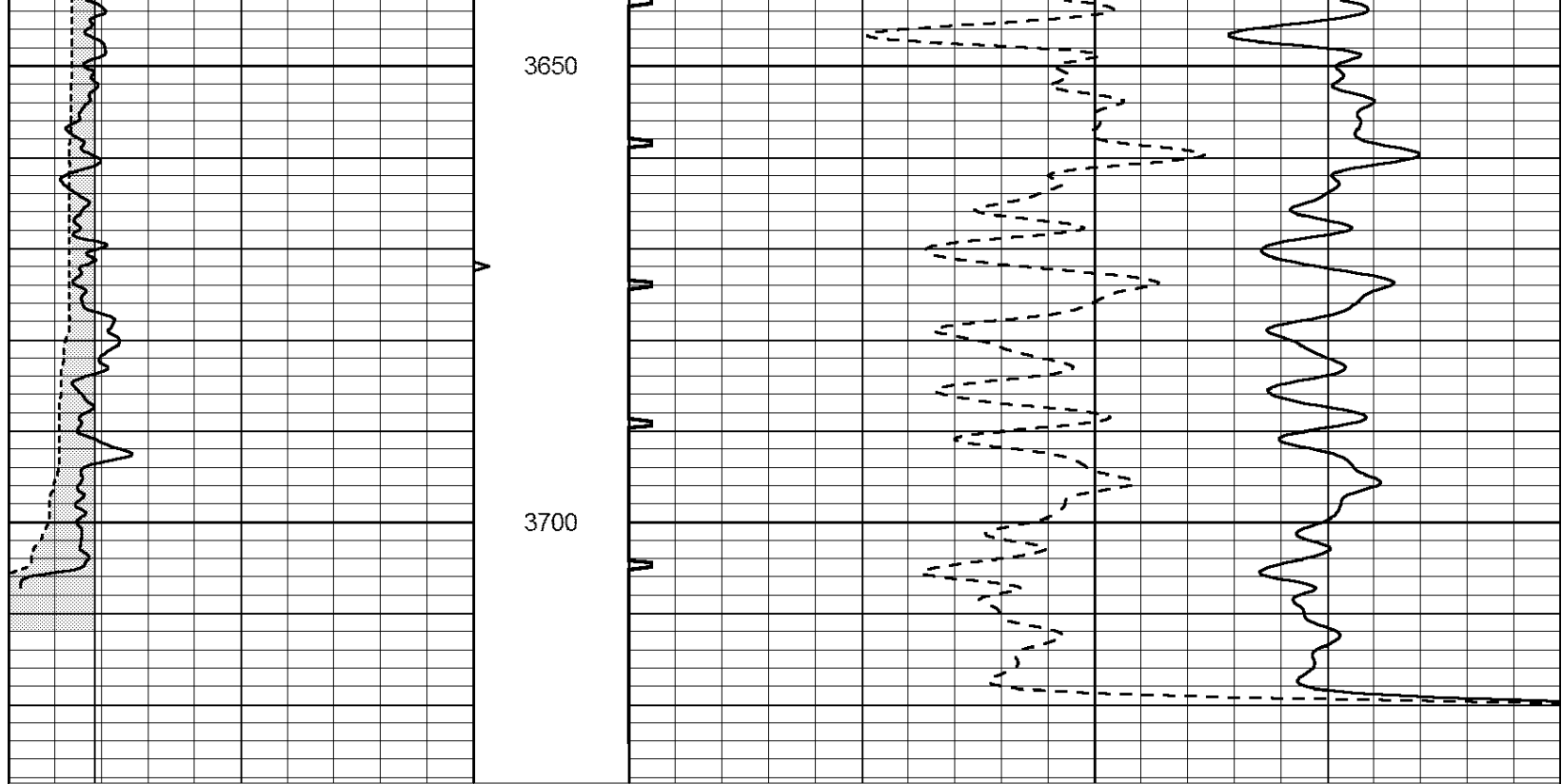
3450

3500

3550

3600





0	GAMMA RAY (GAPI)	150	ABHV	140	DELTA TIME (usec/ft)	40
6	CALIPER (in)	16	10 (ft3) 0	30	SONIC POROSITY (pu)	-10
			TBHV	0	ITT (msec)	20
			0 (ft3) 10			

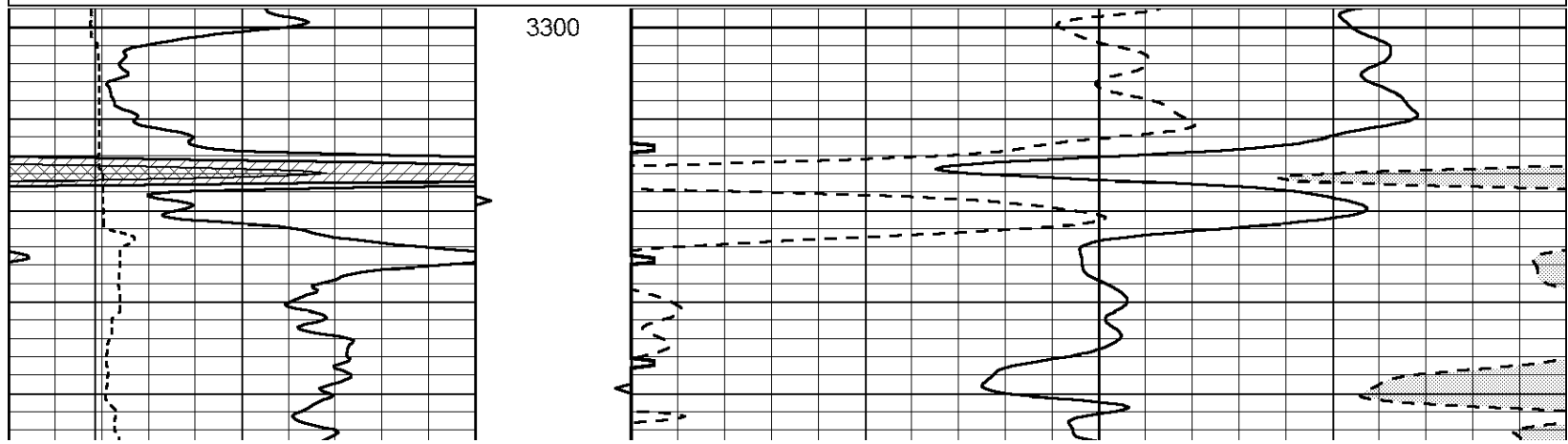


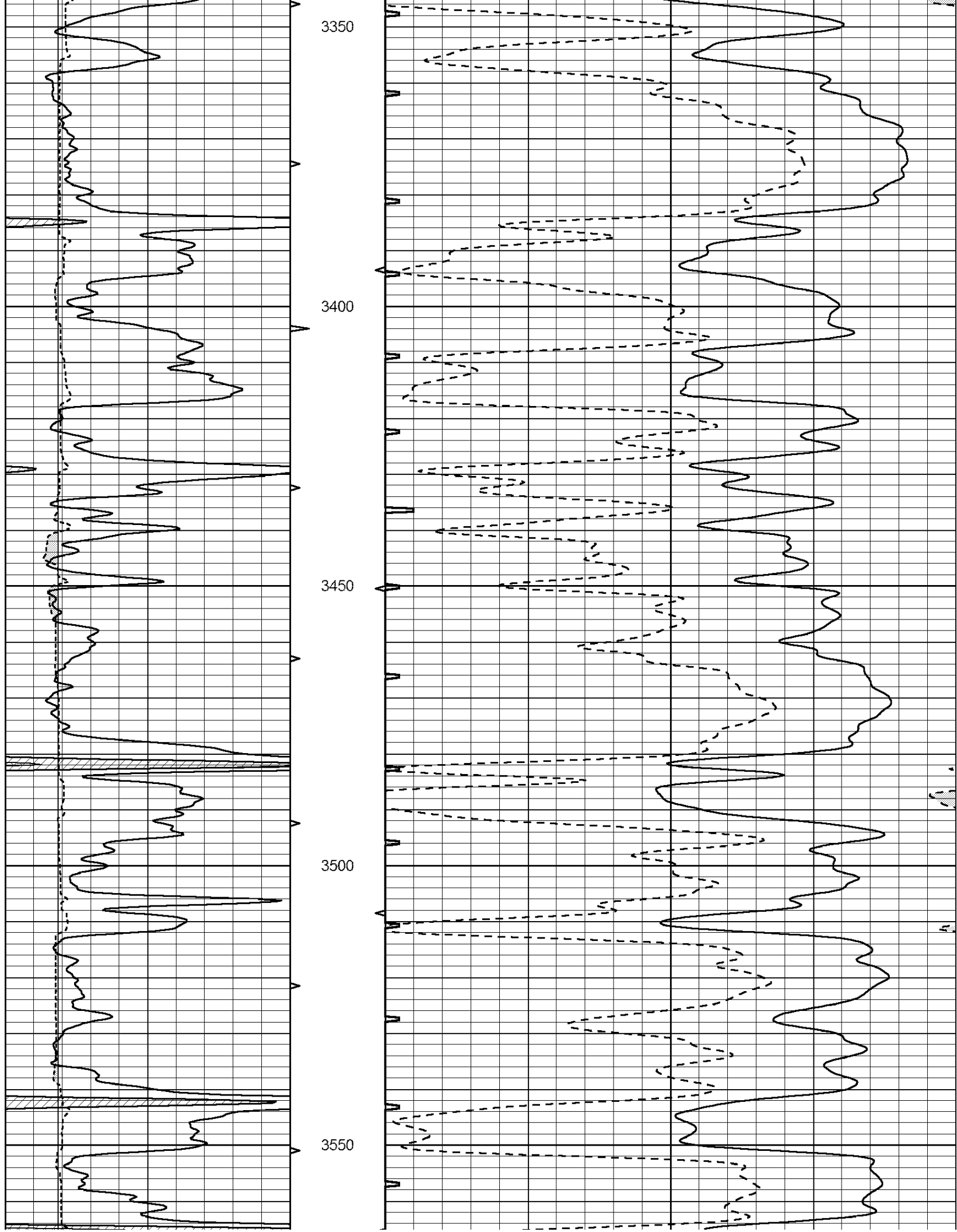
**COMPLETION  
& PRODUCTION  
SERVICES CO.**

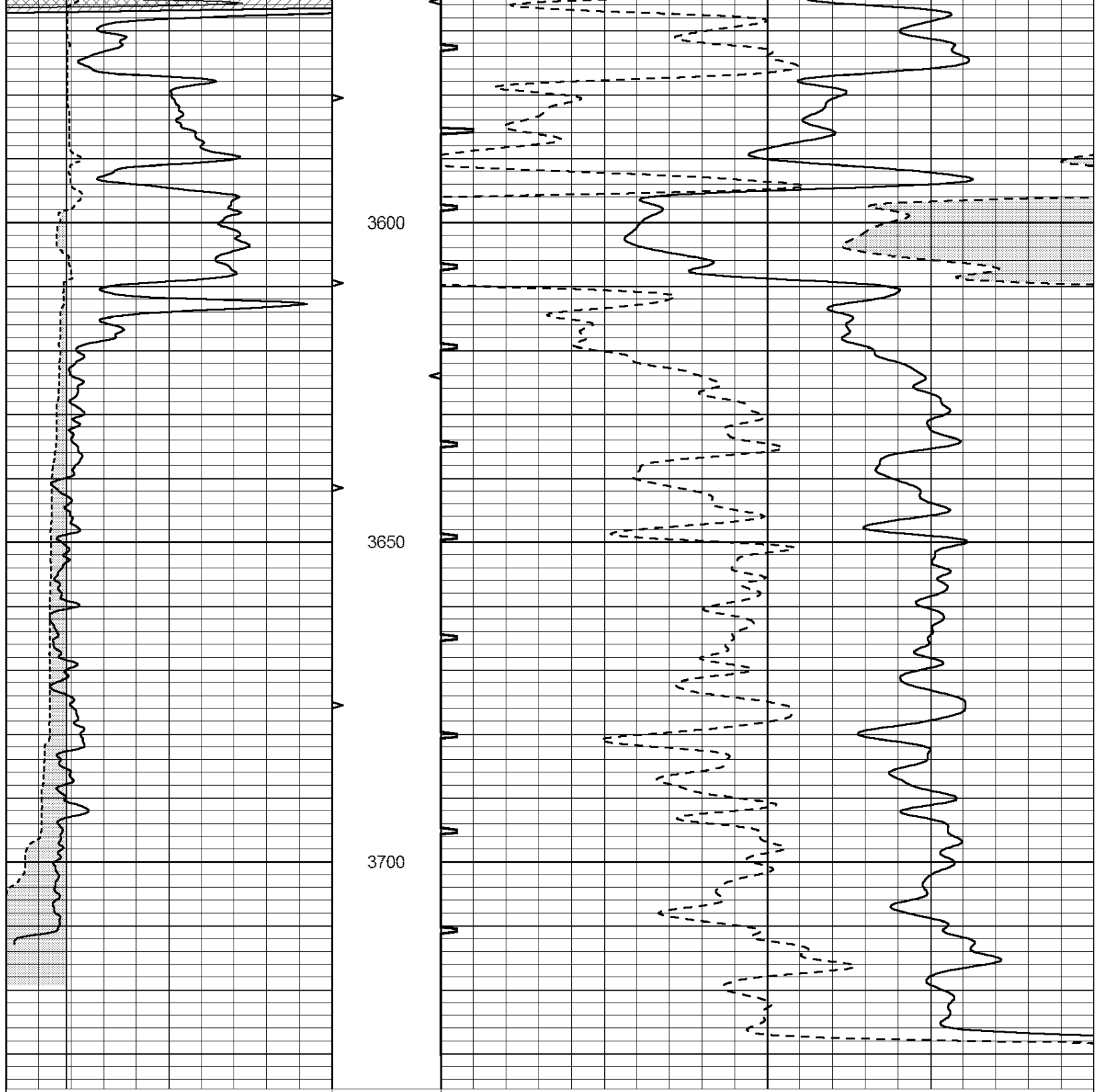
# REPEAT SECTION

Database File: 26237pe.db  
 Dataset Pathname: pass8.1  
 Presentation Format: \_slt  
 Dataset Creation: Tue Oct 14 09:02:38 2014 by Calc Open-Cased 090629  
 Charted by: Depth in Feet scaled 1:240

0	GAMMA RAY (GAPI)	150	ABHV	140	DELTA TIME (usec/ft)	40
6	CALIPER (in)	16	10 (ft3) 0	30	SONIC POROSITY (pu)	-10
			TBHV	0	ITT (msec)	20
			0 (ft3) 10			







0	GAMMA RAY (GAPI)	150	ABHV	140	DELTA TIME (usec/ft)	40
6	CALIPER (in)	16	10 (ft3)	0 30	SONIC POROSITY (pu)	-10
			TBHV	0	ITT (msec)	20
			0 (ft3)	10		