



**COMPLETION
& PRODUCTION
SERVICES CO.**

**DUAL
INDUCTION
LOG**

Company THOMASON PETROLEUM INC.
Well LAMBERT SE #11-1
Field CRESSON
County ROOKS State KANSAS

Company THOMASON PETROLEUM INC.
Well LAMBERT SE #11-1
Field CRESSON
County ROOKS
State KANSAS

Location: API #: 15-163-24248-00-00
2235' FSL & 1655' FEL
SW - NE - NW - SE
SEC 11 TWP 9S RGE 20W
Permanent Datum GROUND LEVEL Elevation 2118
Log Measured From KELLY BUSHING 8' A.G.L.
Drilling Measured From KELLY BUSHING
Other Services
DILMEL
SONIC
Elevation
K.B. 2126
D.F. 2124
G.L. 2118

Date	10/14/14		
Run Number	ONE		
Depth Driller	3720		
Depth Logger	3722		
Bottom Logged Interval	3720		
Top Log Interval	00		
Casing Driller	8 5/8 @ 221'		
Casing Logger	223'		
Bit Size	7.875		
Type Fluid in Hole	CHEMICAL MUD		
Density / Viscosity	9.1/44	CHLORIDES 1,400 PPM	
pH / Fluid Loss	10.0/7.6		
Source of Sample	FLOWLINE		
Rm @ Meas. Temp	1.00 @ 78F		
Rmf @ Meas. Temp	0.75 @ 78F		
Rmc @ Meas. Temp	1.20 @ 78F		
Source of Rmf / Rmc	MEASURED		
Rm @ BHT	0.70 @ 112F		
Time Circulation Stopped	2 HOURS		
Time Logger on Bottom			
Maximum Recorded Temperature	112F		
Equipment Number	3802		
Location	HAYS, KS.		
Recorded By	IAN MABB		
Witnessed By	KEITH REAVIS		

<<< Fold Here >>>

All interpretations are opinions based on inferences from electrical or other measurements and we cannot and do not guarantee the accuracy or correctness of any interpretation, and we shall not, except in the case of gross or willful negligence on our part, be liable or responsible for any loss, costs, damages, or expenses incurred or sustained by anyone resulting from any interpretation made by any of our officers, agents or employees. These interpretations are also subject to our general terms and conditions set out in our current Price Schedule.

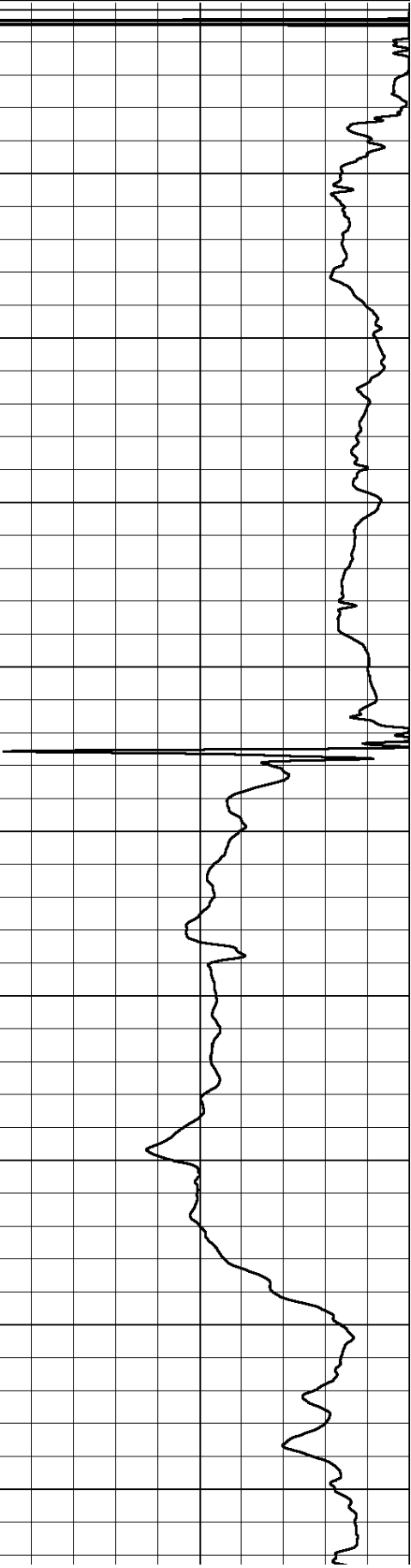
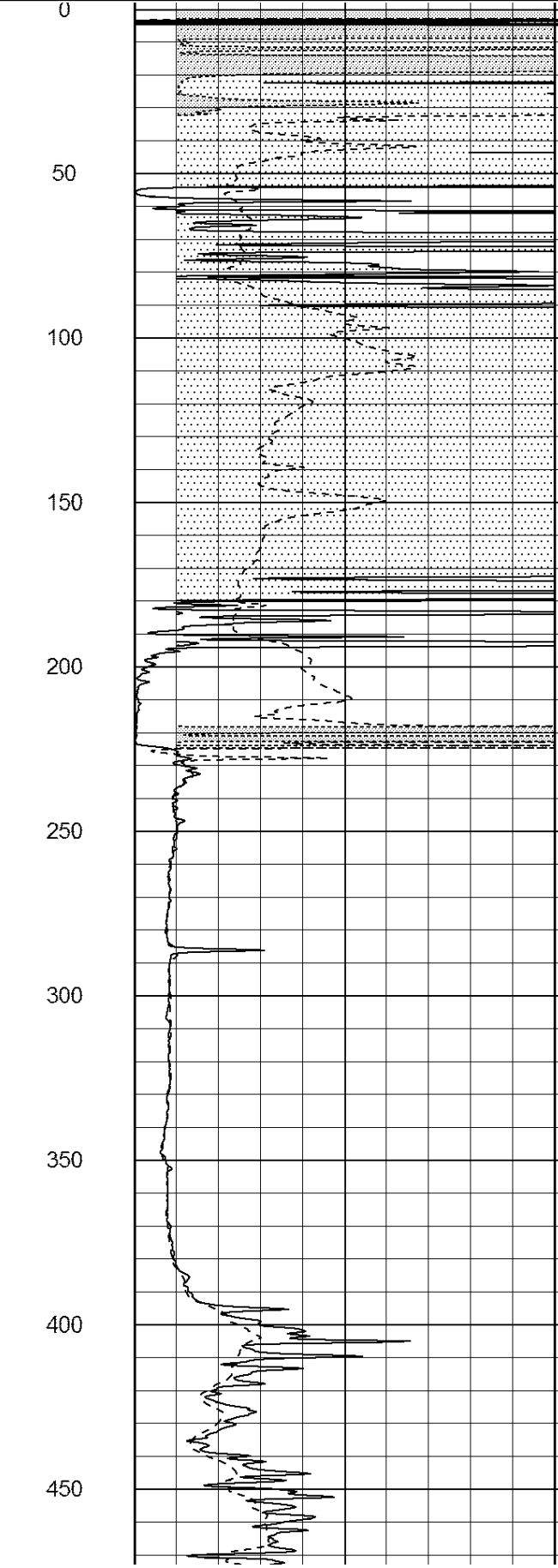
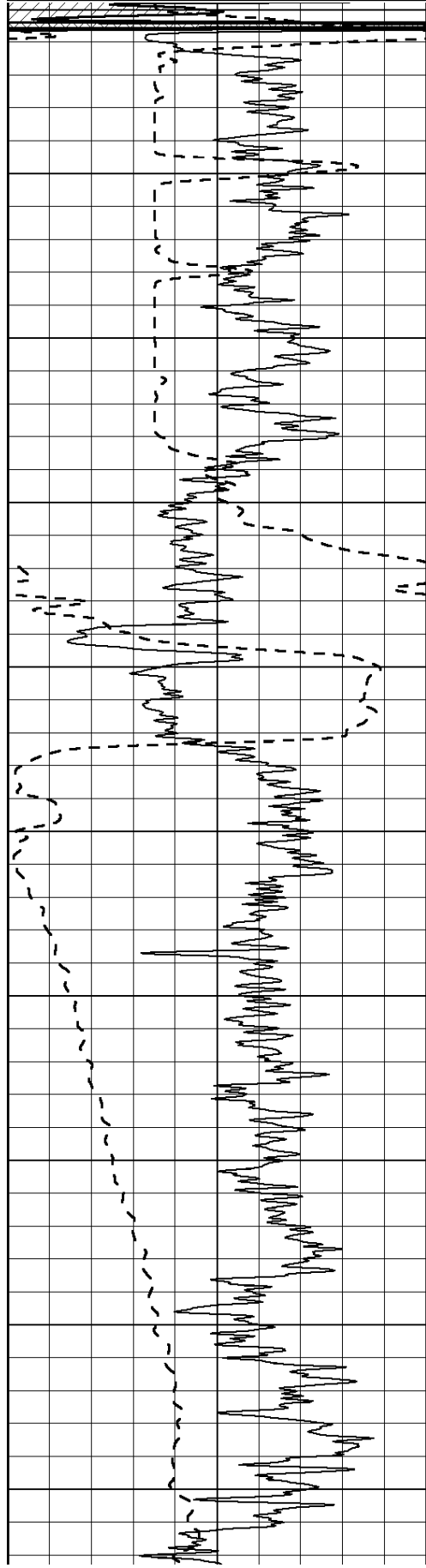
Comments

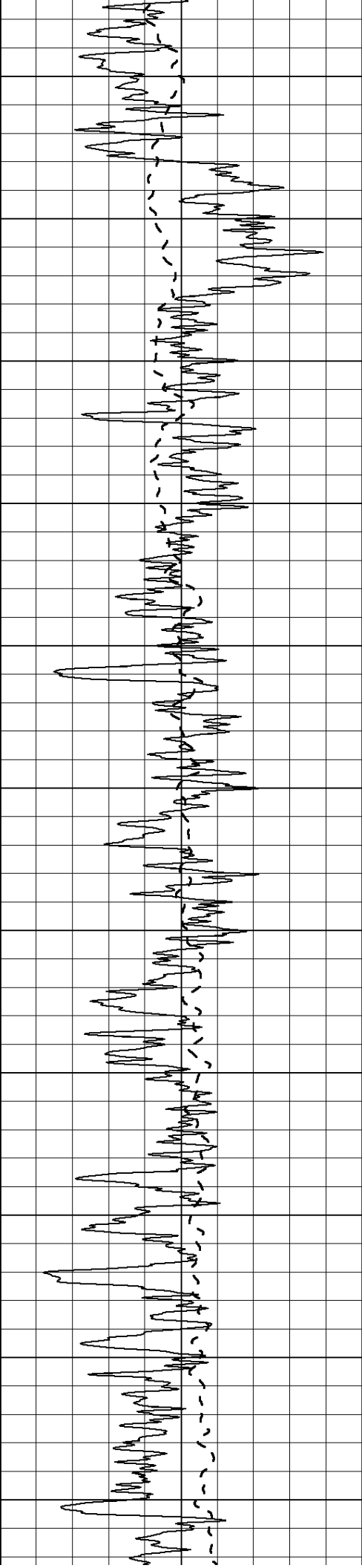
NABORS COMPLETION & PRODUCTION SERVICES CO.
785 (628 - 6395)
THANK YOU FOR YOUR BUSINESS
DIRECTIONS : ZURICH, KS. - 3 MILES NORTH - 4 MILES WEST - 1/2 MILE NORTH - WEST INTO

0	Gamma Ray (GAPI)	150
-100	SP (mV)	100

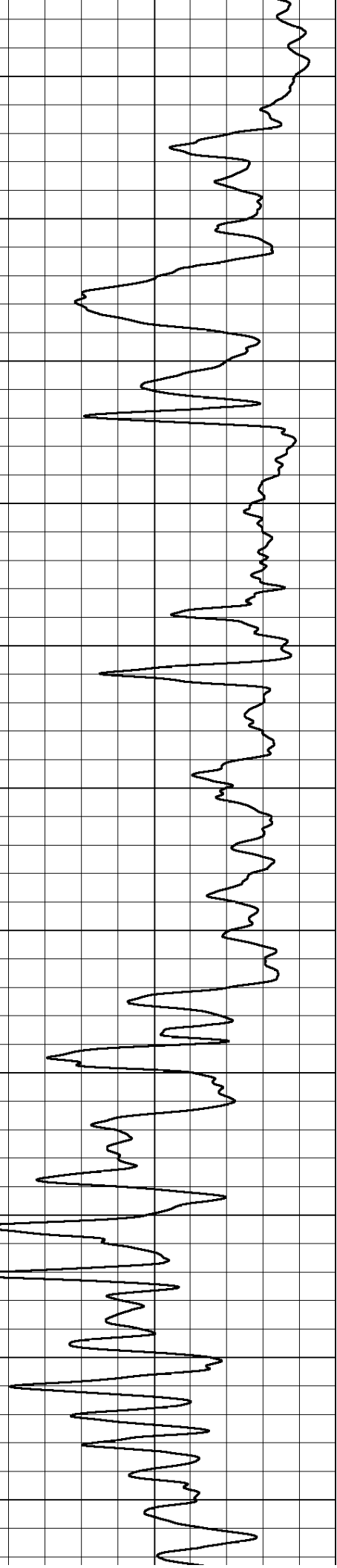
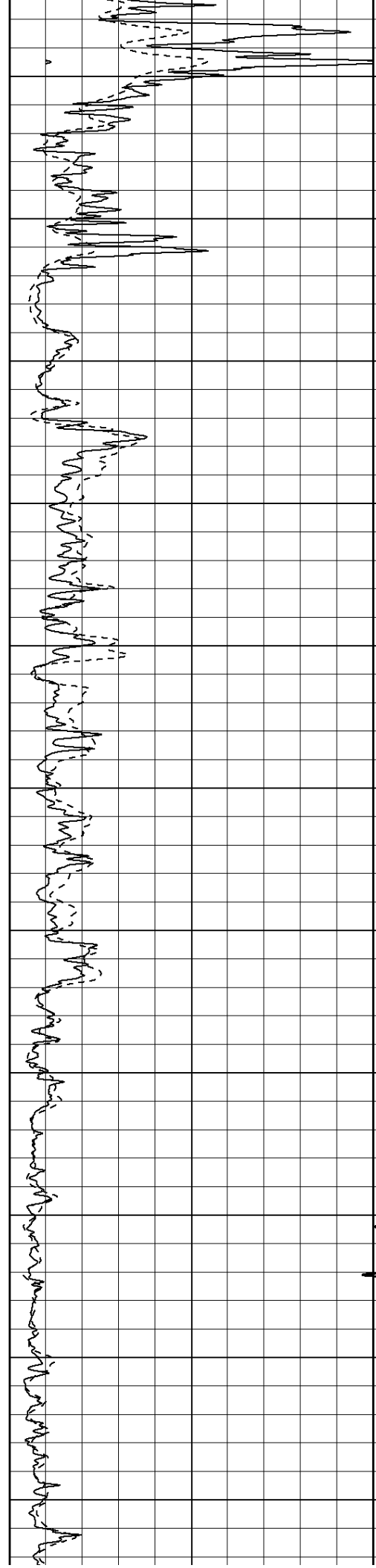
0	RLL3 (Ohm-m)	50
0	Deep Induction (Ohm-m)	50

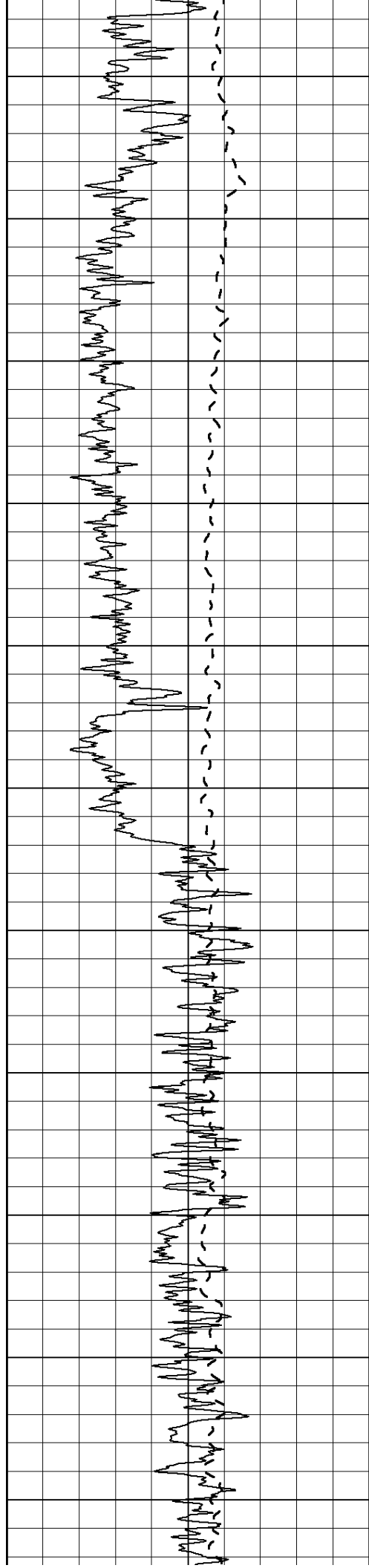
1000	CILD (mmho/m)	0
50	RILD X10 (Ohm-m)	500
50	RLL3 X10 (Ohm-m)	500



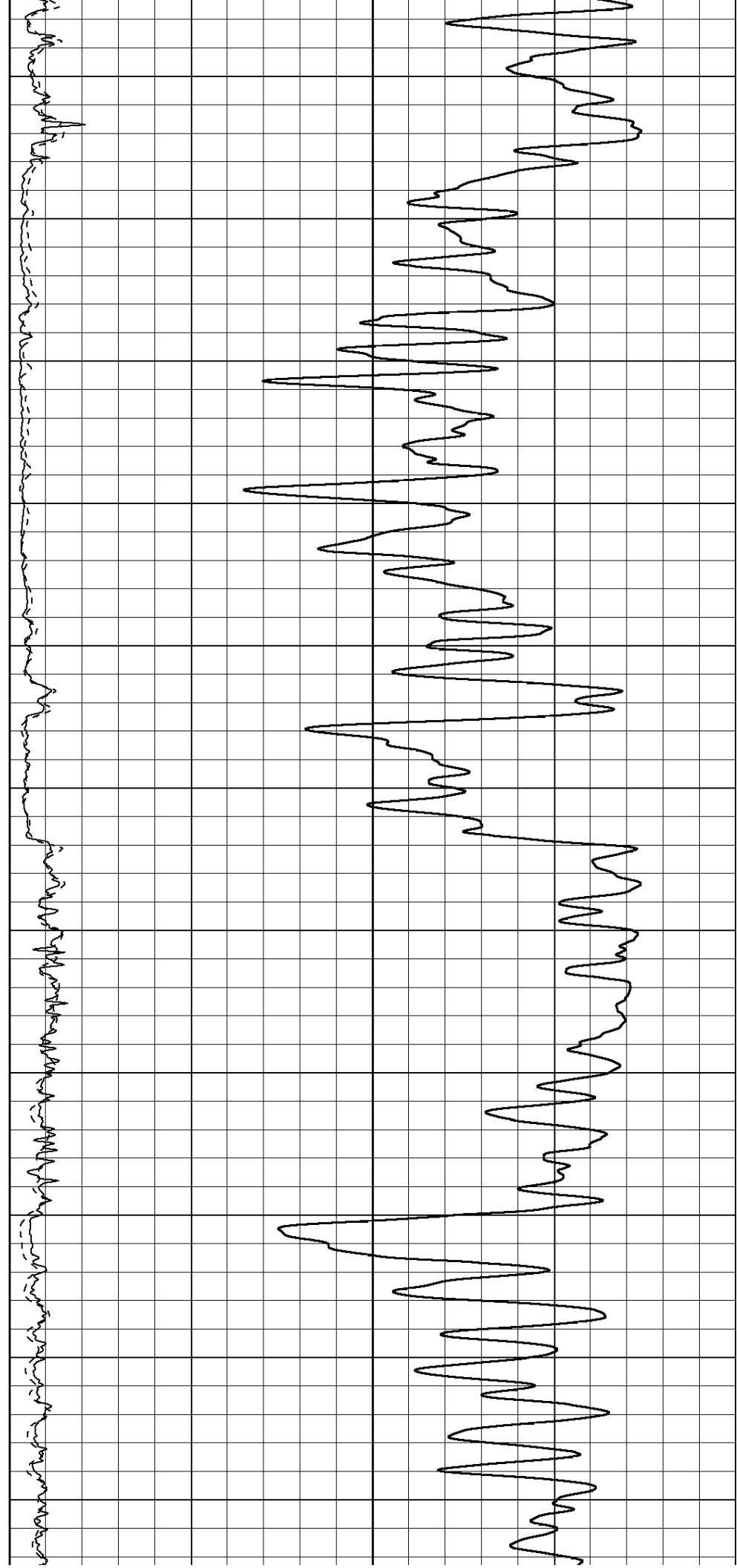


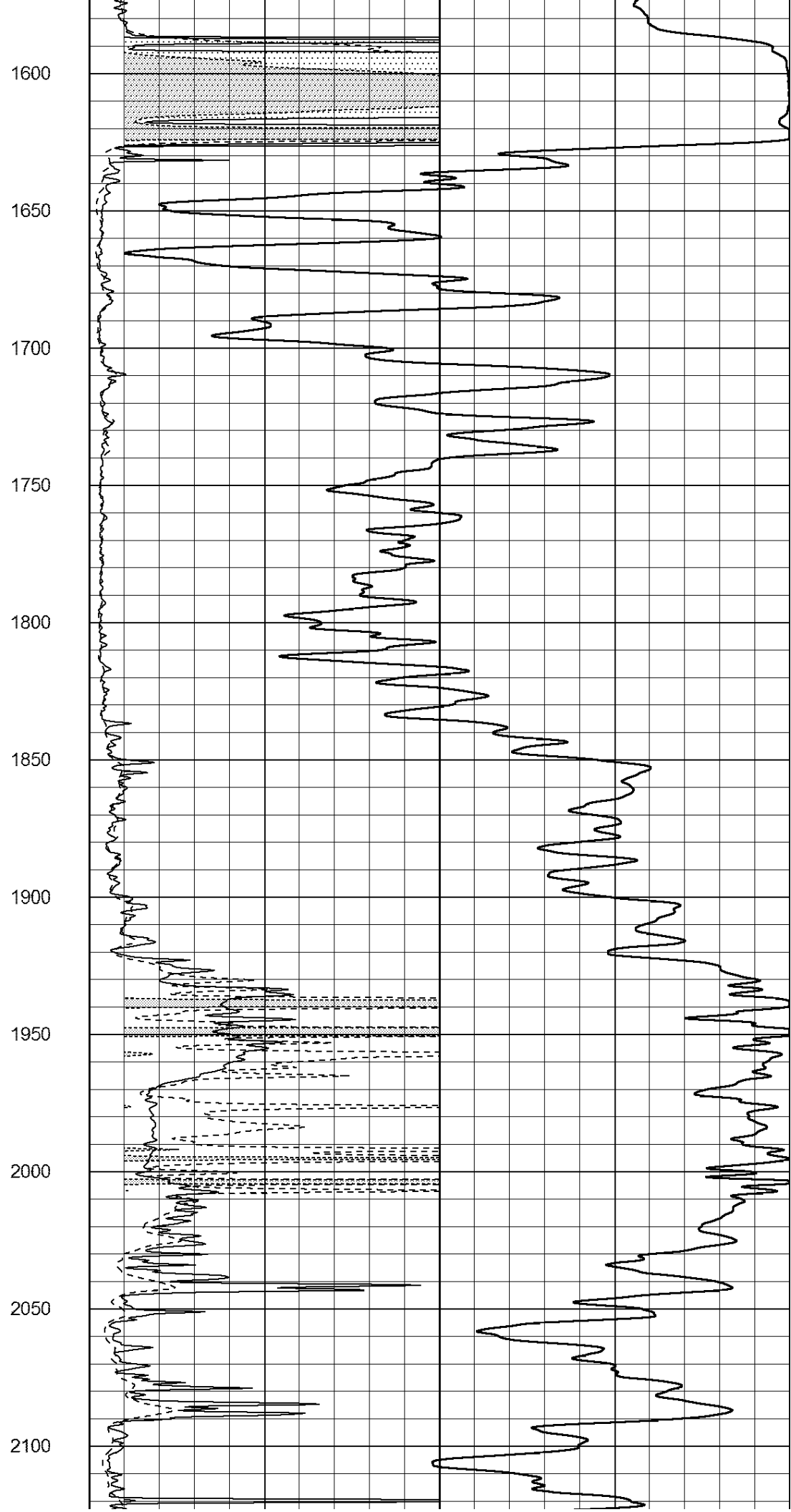
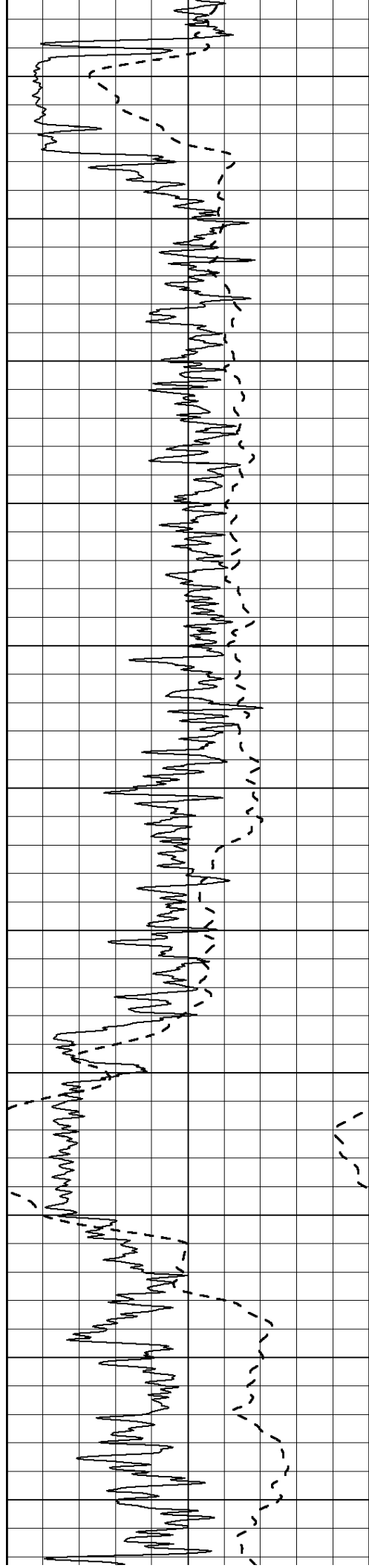
500
550
600
650
700
750
800
850
900
950
1000

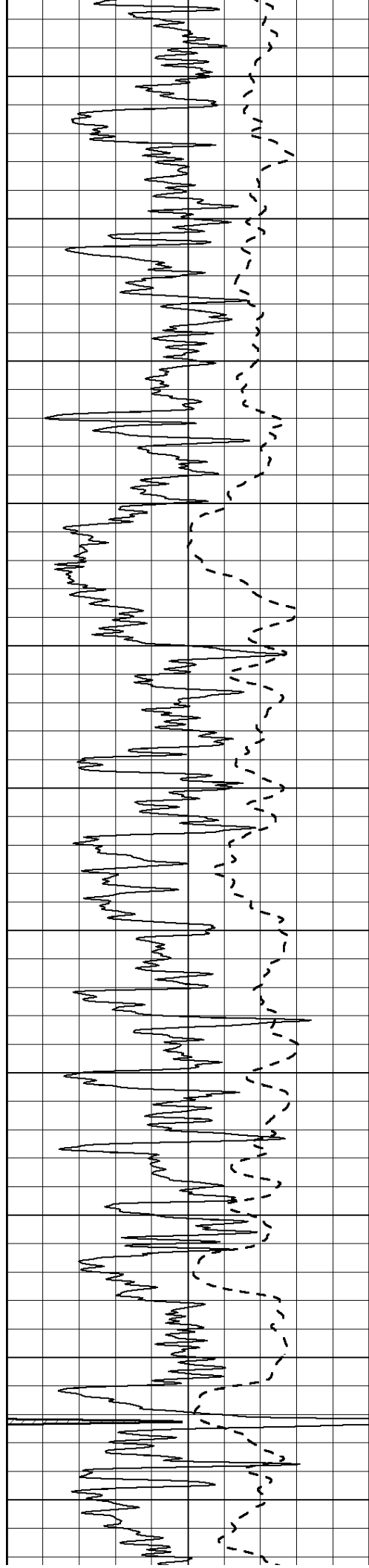




1050
1100
1150
1200
1250
1300
1350
1400
1450
1500
1550







2150

2200

2250

2300

2350

2400

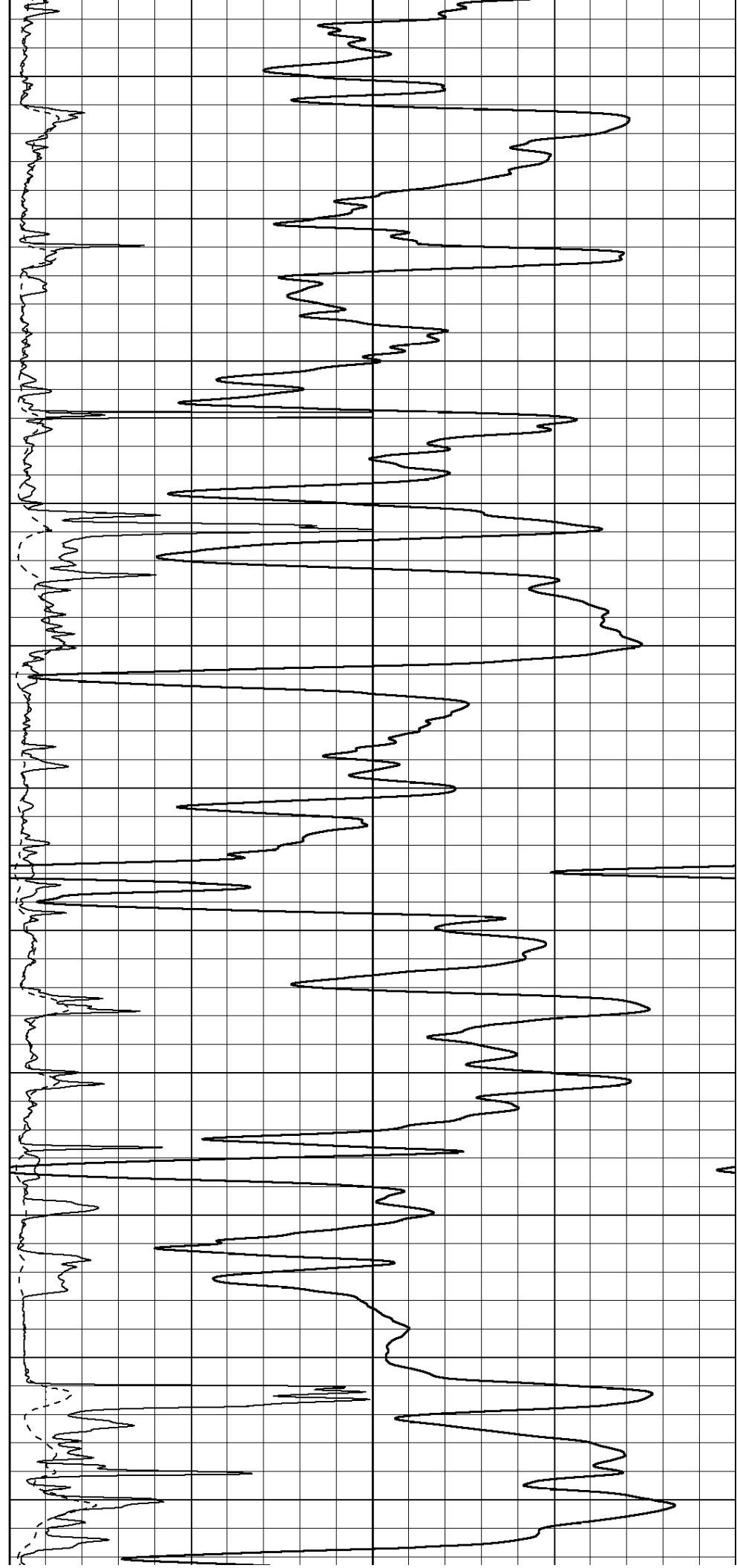
2450

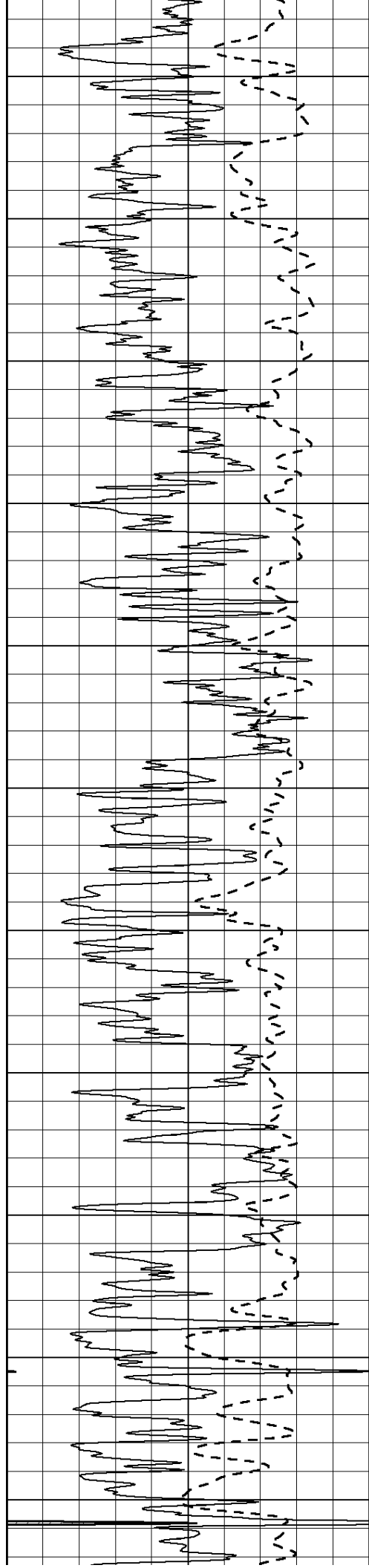
2500

2550

2600

2650





2700

2750

2800

2850

2900

2950

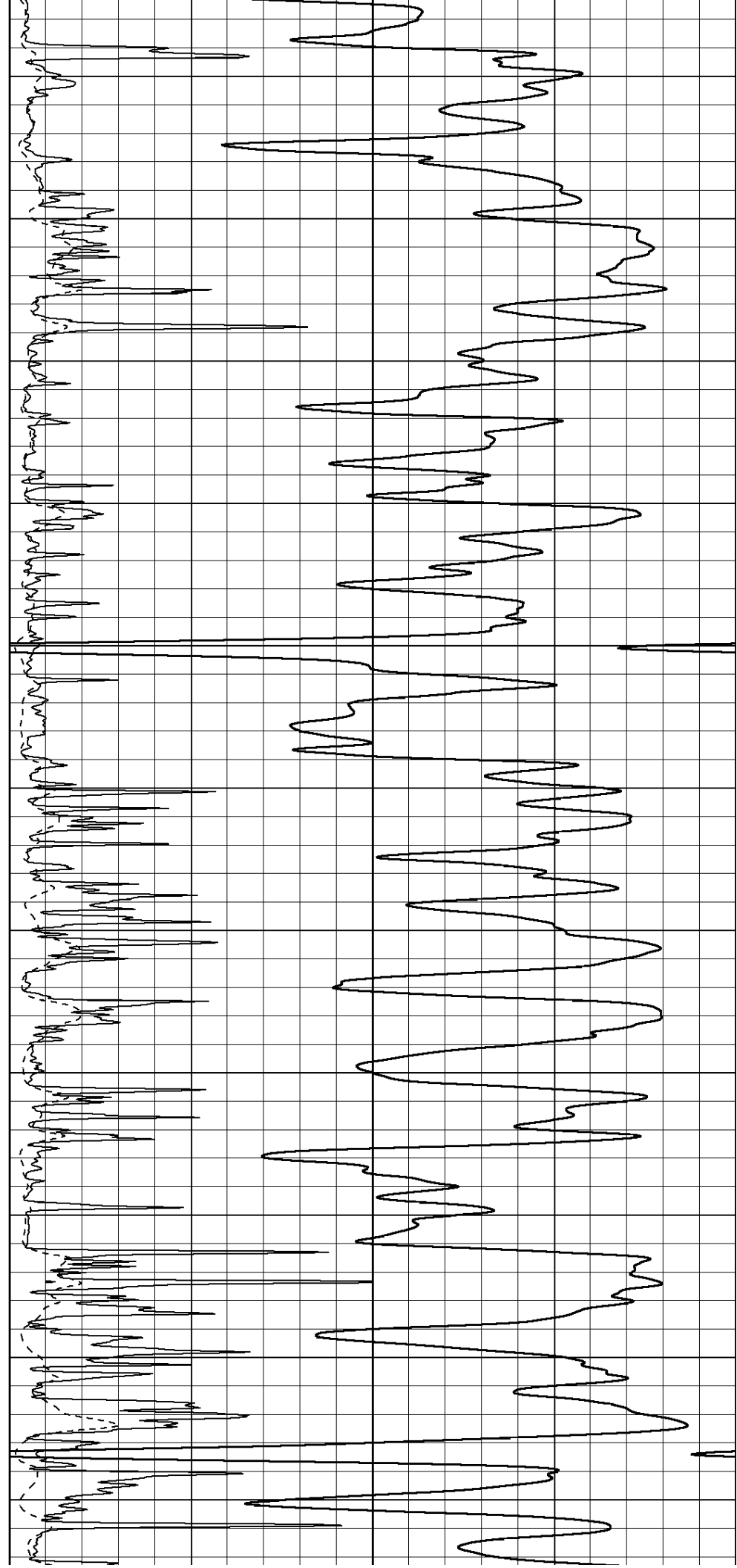
3000

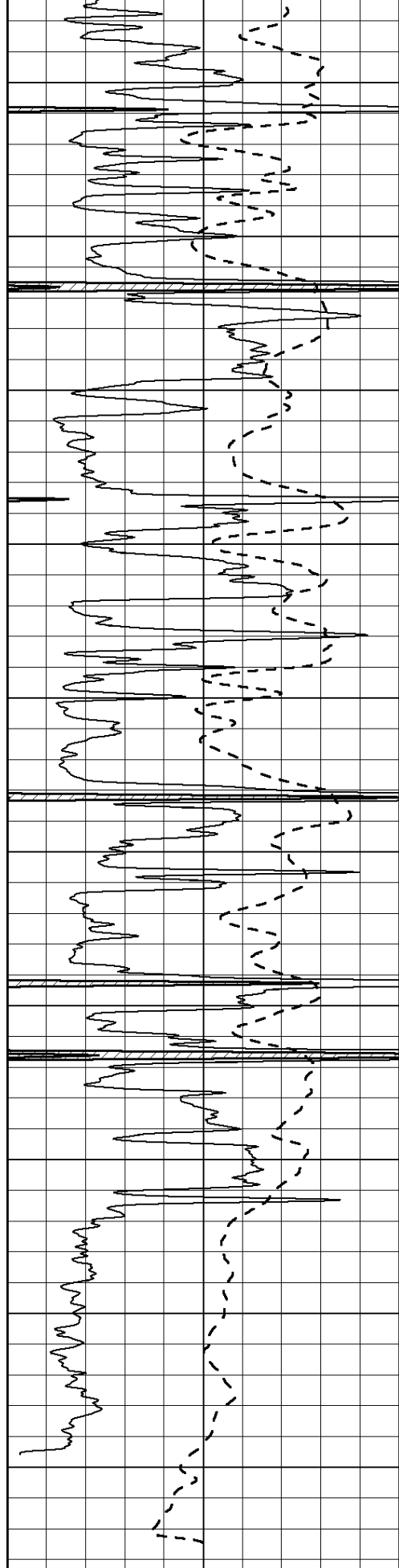
3050

3100

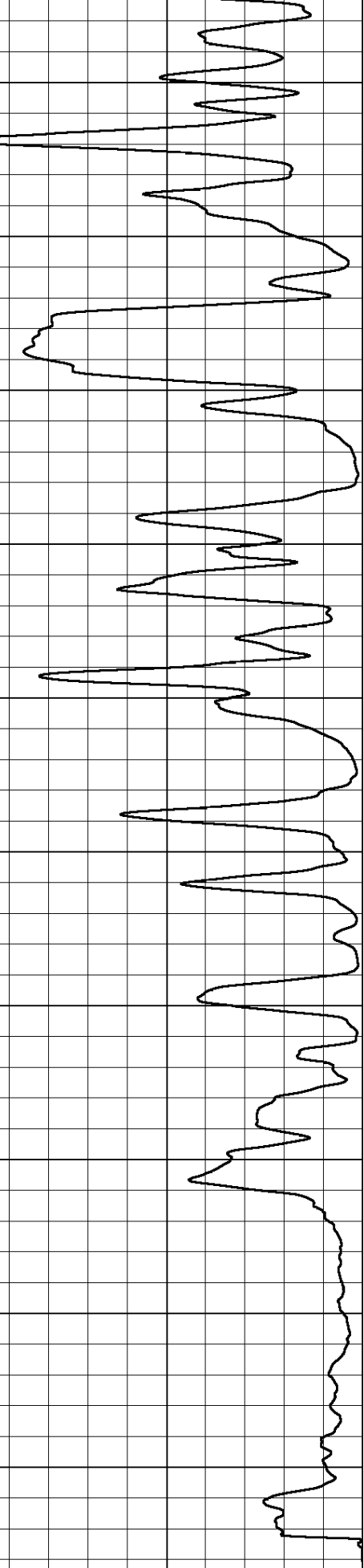
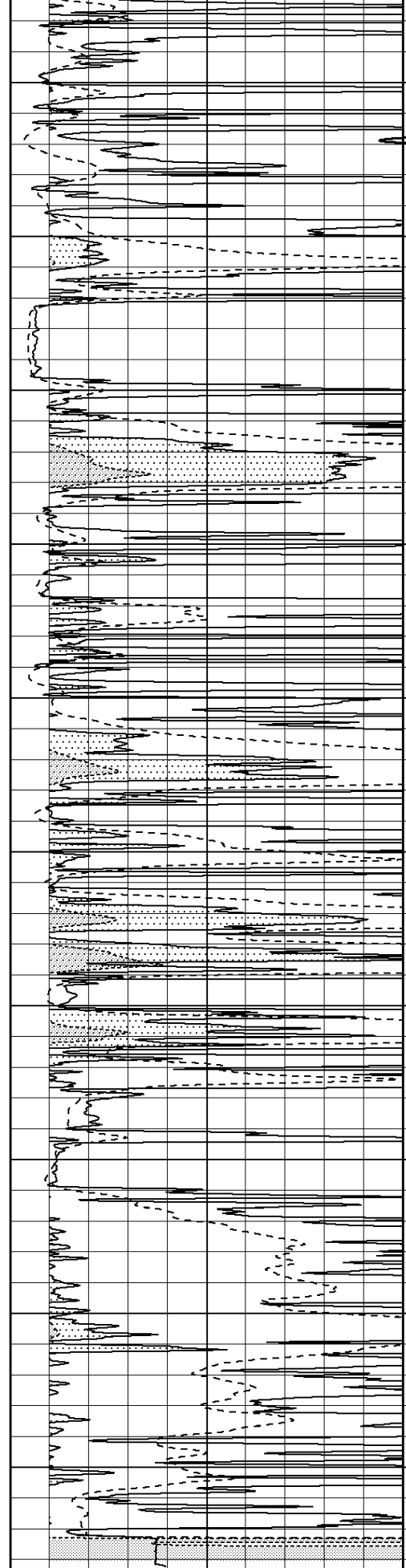
3150

3200





3250
3300
3350
3400
3450
3500
3550
3600
3650
3700



0 Gamma Ray (GAPI) 150
-100 SP (mV) 100

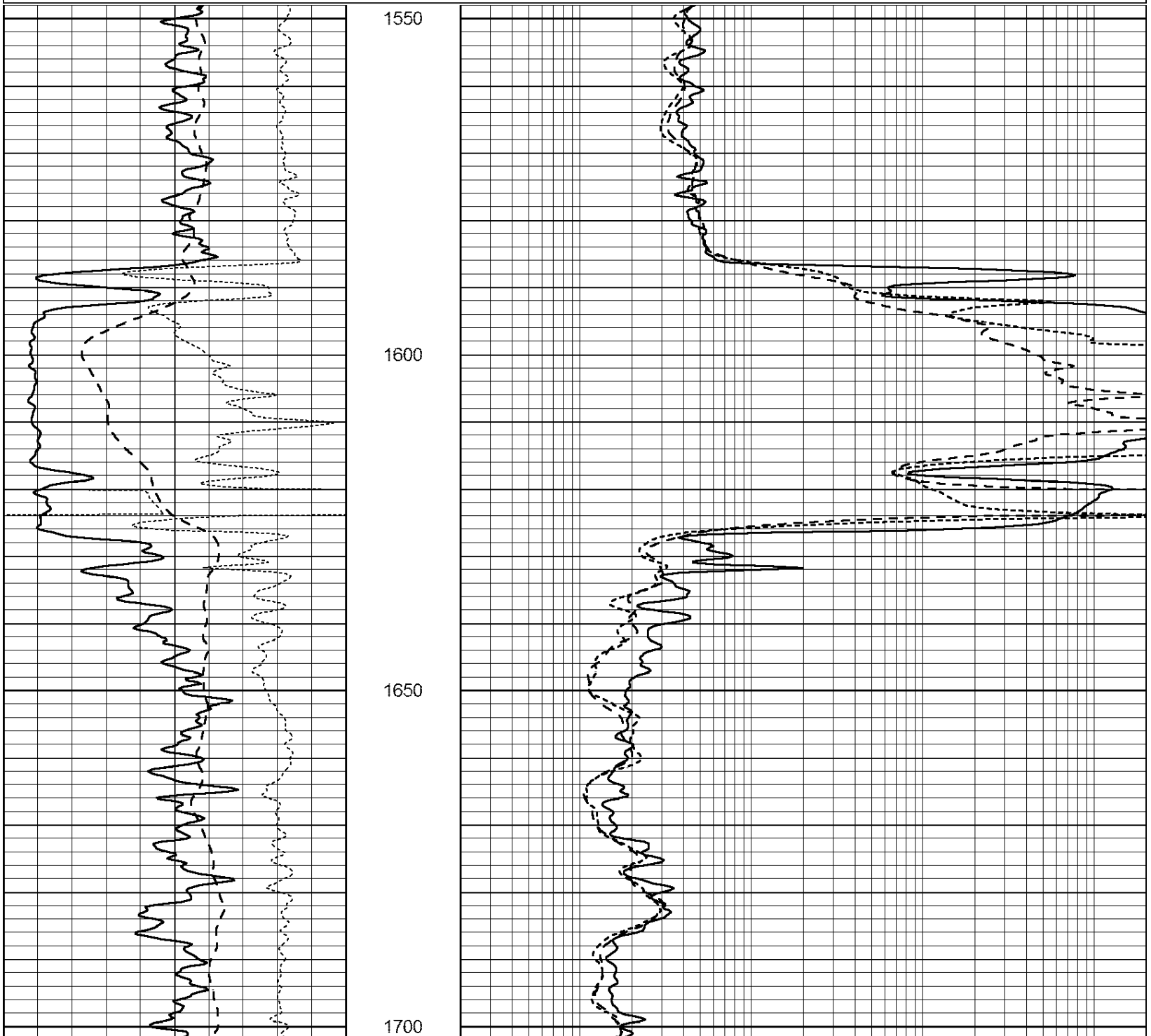
0 RLL3 (Ohm-m) 50
0 Deep Induction (Ohm-m) 50

1000 CILD (mmho/m) 0

50	RILD X10 (Ohm-m)	500
50	RLL3 X10 (Ohm-m)	500

Database File: 26237pe.db
 Dataset Pathname: pass3.1
 Presentation Format: _dil
 Dataset Creation: Tue Oct 14 06:20:05 2014 by Calc Open-Cased 090629
 Charted by: Depth in Feet scaled 1:240

0	GAMMA RAY (GAPI)	150	0.2	SHALLOW GUARD (Ohm-m)	2000
-100	SP (mV)	100	0.2	MEDIUM INDUCTION (Ohm-m)	2000
-250	Rxo/Rt	50	0.2	DEEP INDUCTION (Ohm-m)	2000



0	GAMMA RAY (GAPI)	150	0.2	SHALLOW GUARD (Ohm-m)	2000
-100	SP (mV)	100	0.2	MEDIUM INDUCTION (Ohm-m)	2000

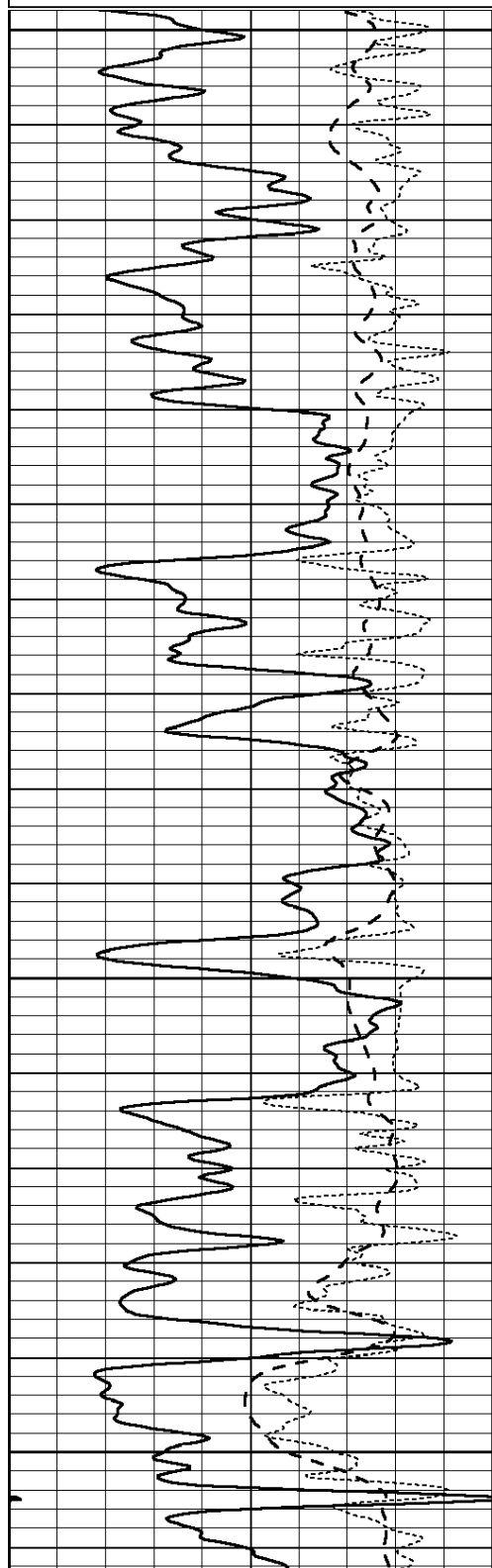
-250 Rxo/Rt 50

0.2 DEEP INDUCTION (Ohm-m) 2000

Database File: 26237pe.db
 Dataset Pathname: pass3.1
 Presentation Format: _dil
 Dataset Creation: Tue Oct 14 06:20:05 2014 by Calc Open-Cased 090629
 Charted by: Depth in Feet scaled 1:240

0	GAMMA RAY (GAPI)	150
-100	SP (mV)	100
-250	Rxo/Rt	50

0.2	SHALLOW GUARD (Ohm-m)	2000
0.2	MEDIUM INDUCTION (Ohm-m)	2000
0.2	DEEP INDUCTION (Ohm-m)	2000

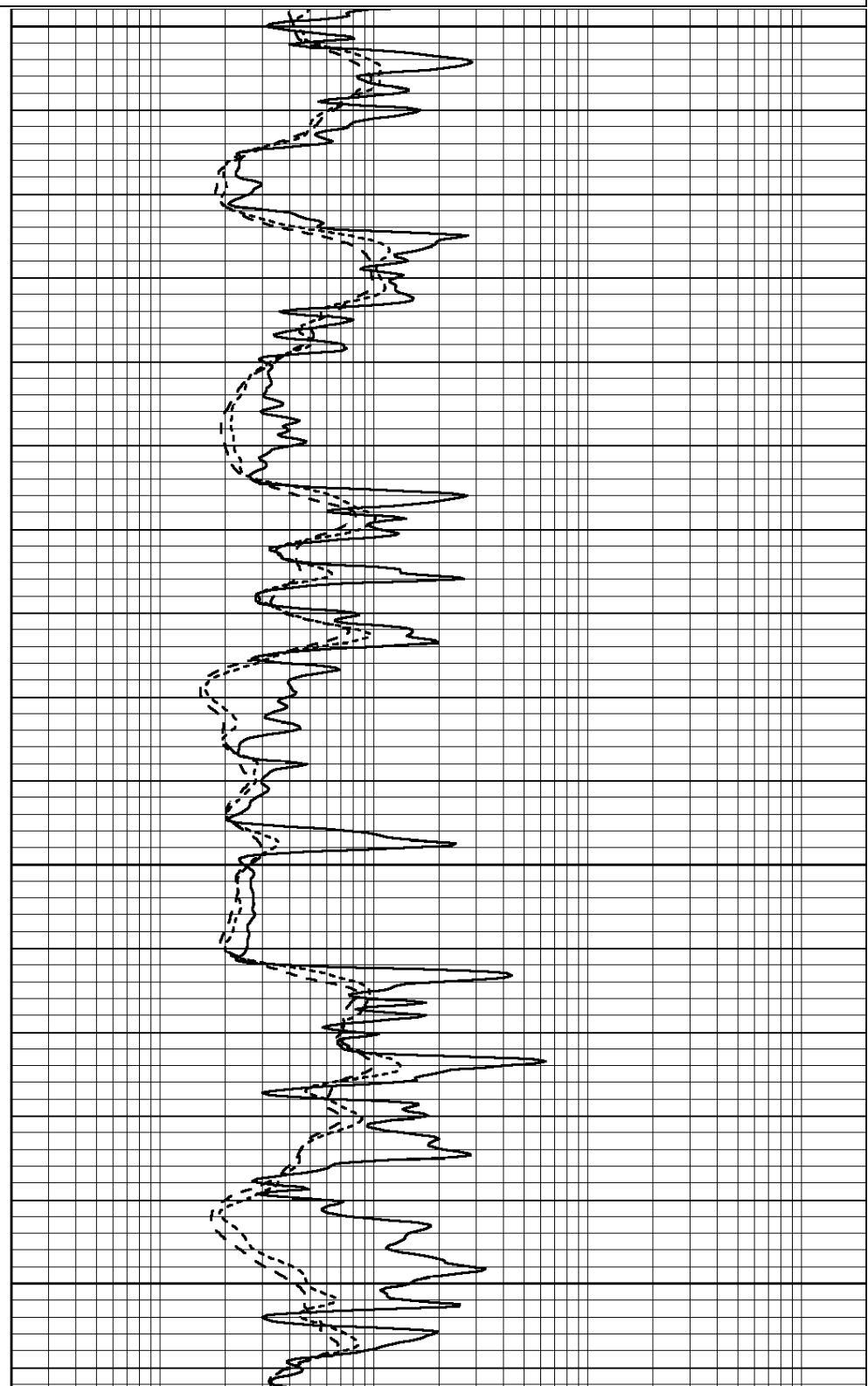


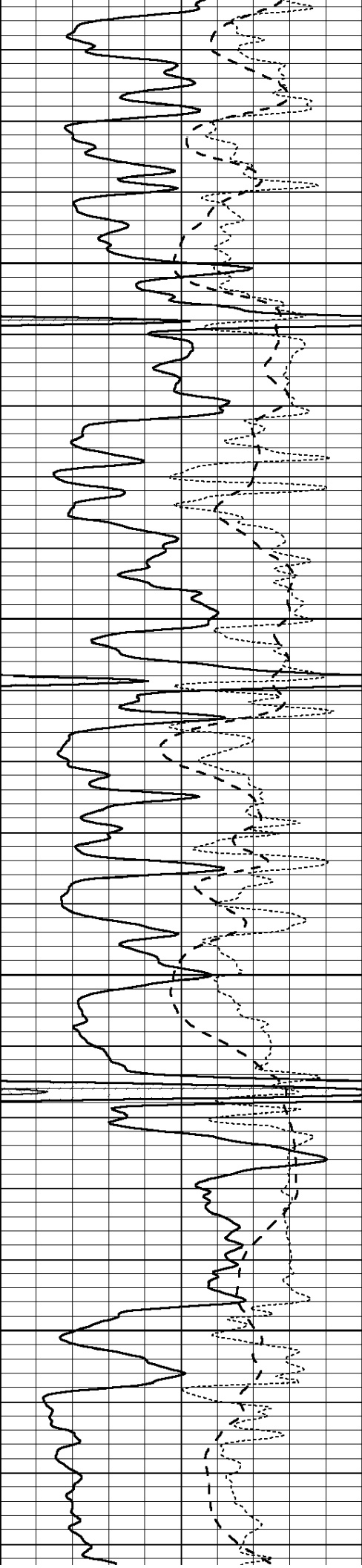
3000

3050

3100

3150



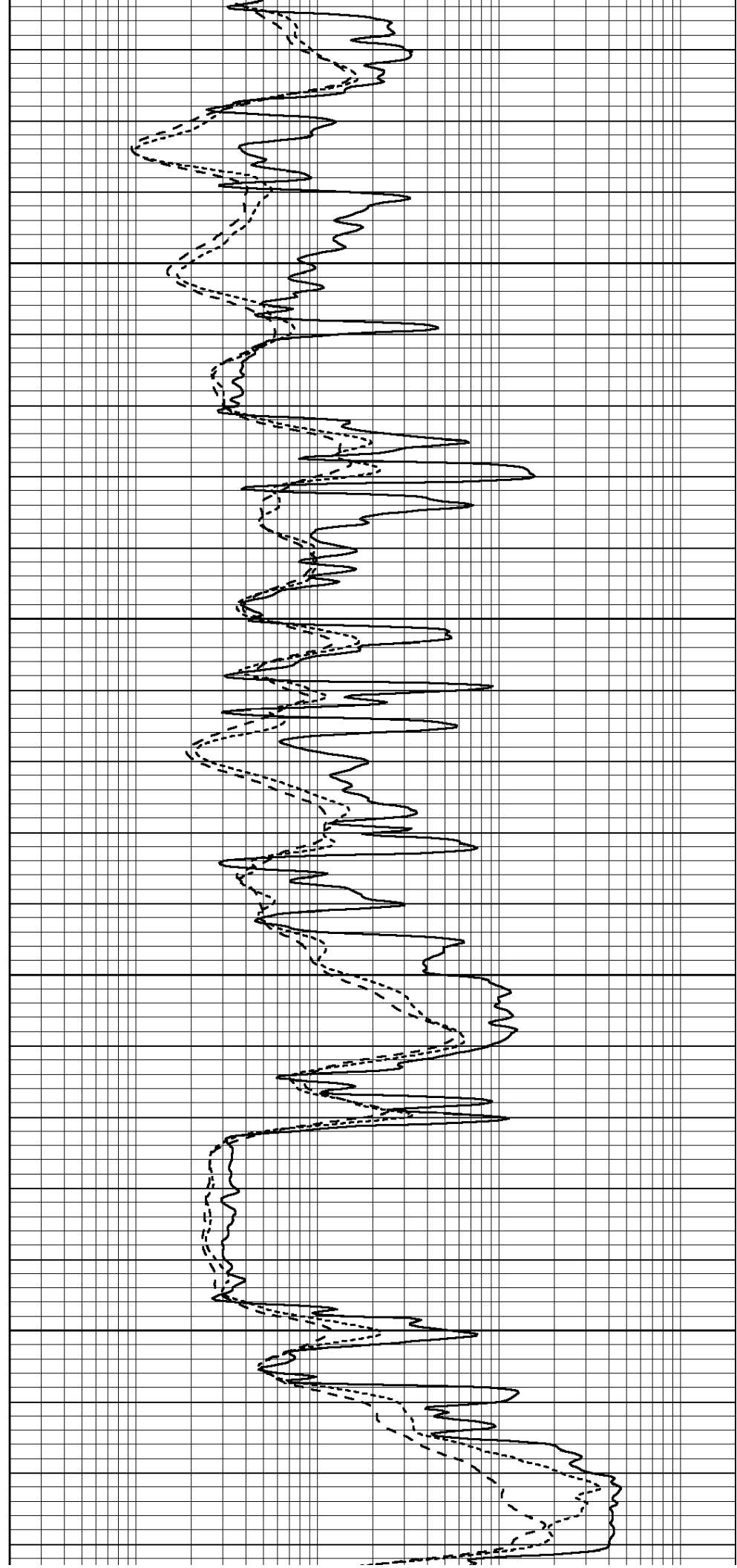


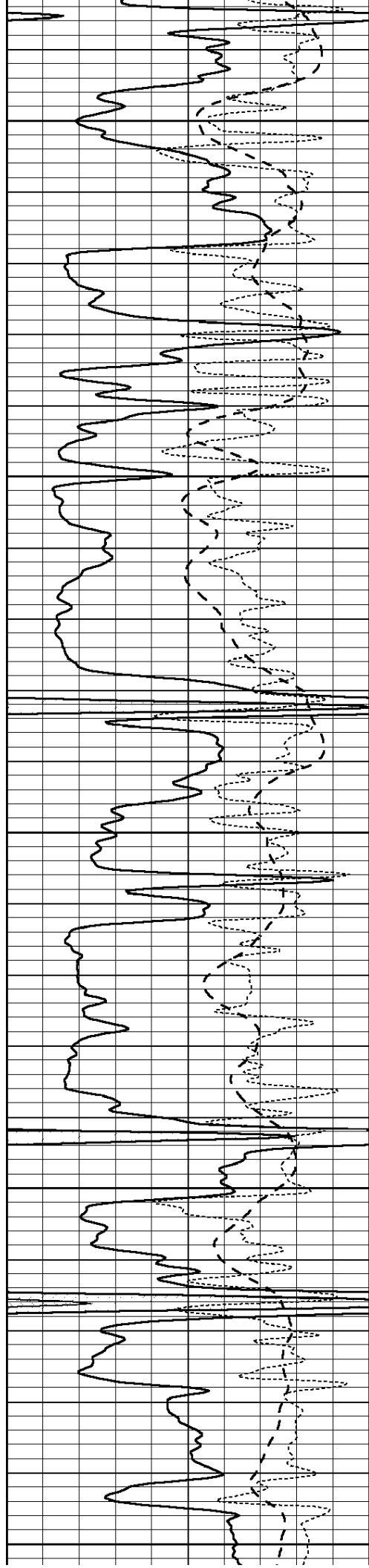
3200

3250

3300

3350





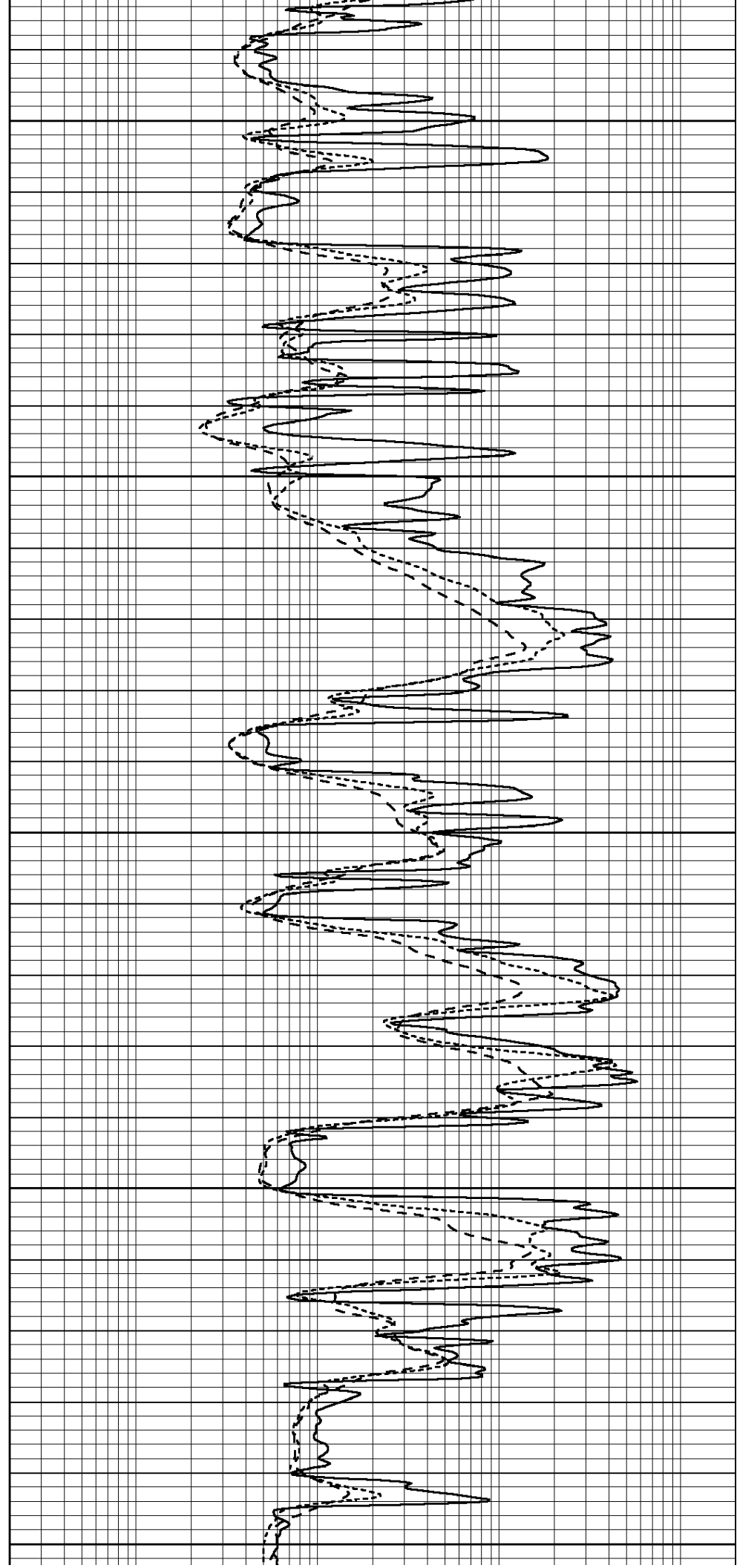
3400

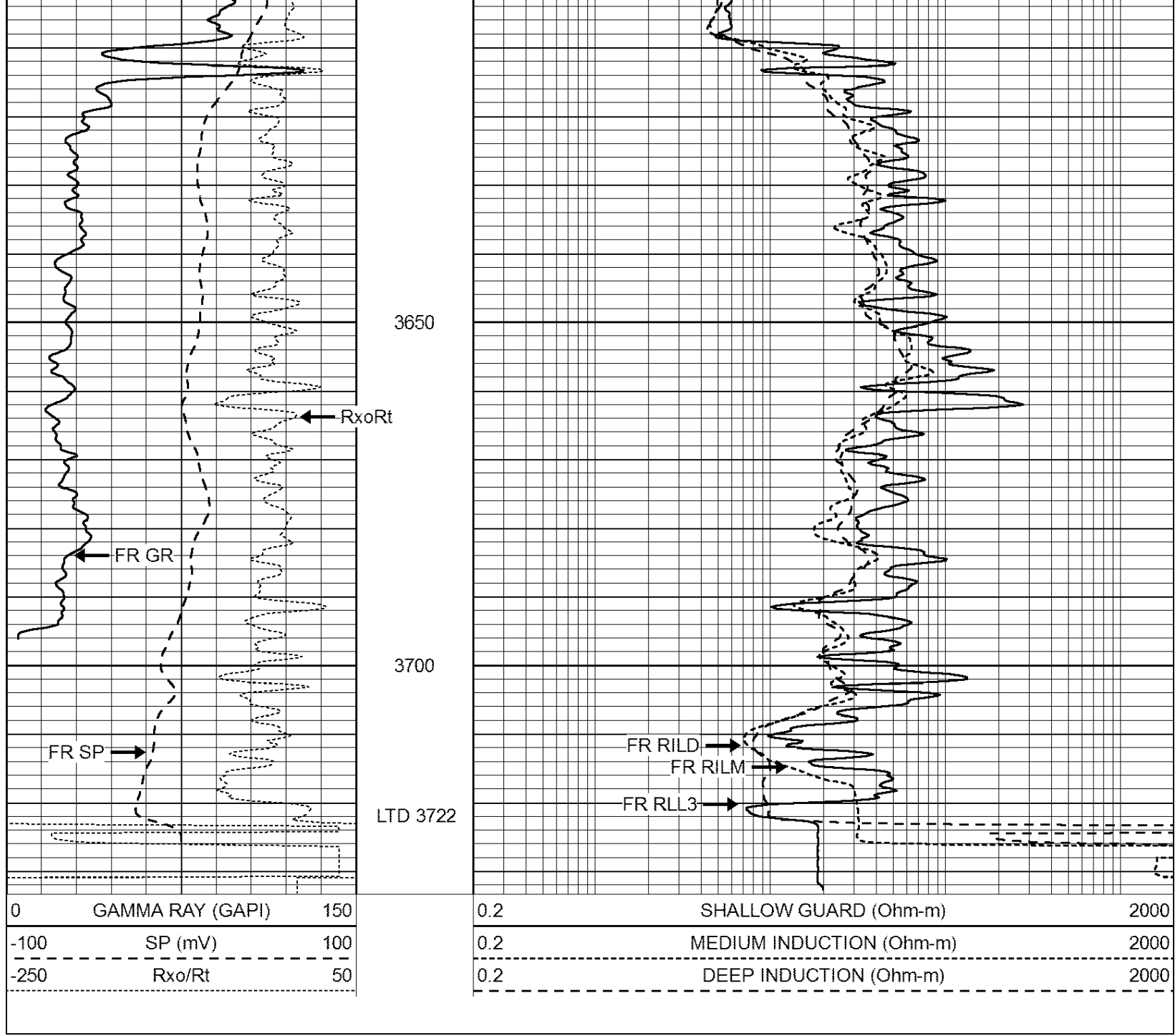
3450

3500

3550

3600





0	GAMMA RAY (GAPI)	150
-100	SP (mV)	100
-250	Rxo/Rt	50

0.2	SHALLOW GUARD (Ohm-m)	2000
0.2	MEDIUM INDUCTION (Ohm-m)	2000
0.2	DEEP INDUCTION (Ohm-m)	2000



**COMPLETION
& PRODUCTION
SERVICES CO.**

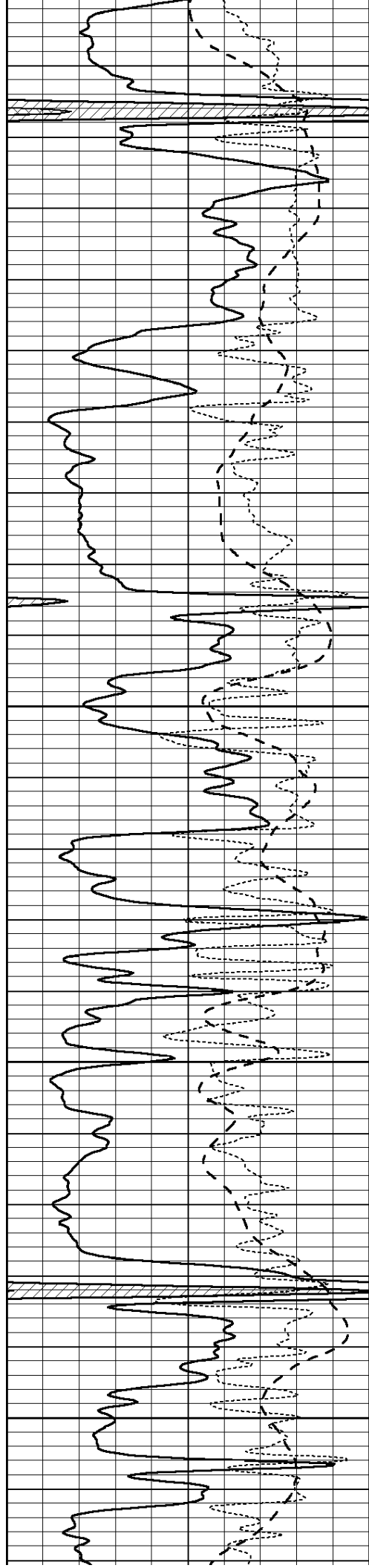
REPEAT SECTION

Database File: 26237pe.db
 Dataset Pathname: pass2.4
 Presentation Format: _dil
 Dataset Creation: Tue Oct 14 05:41:45 2014 by Calc Open-Cased 090629
 Charted by: Depth in Feet scaled 1:240

0	GAMMA RAY (GAPI)	150
-100	SP (mV)	100
-250	Rxo/Rt	50

0.2	SHALLOW GUARD (Ohm-m)	2000
0.2	MEDIUM INDUCTION (Ohm-m)	2000
0.2	DEEP INDUCTION (Ohm-m)	2000



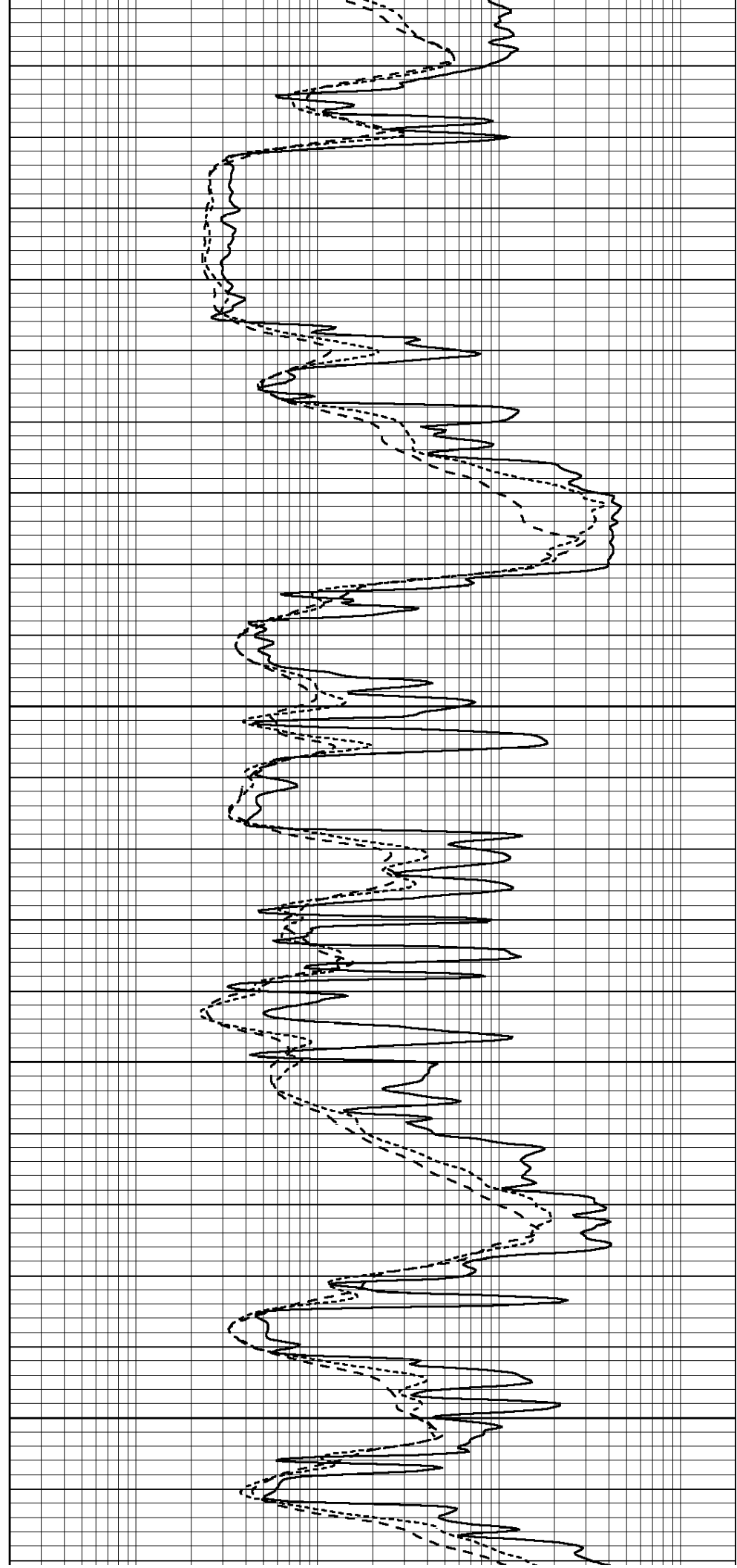


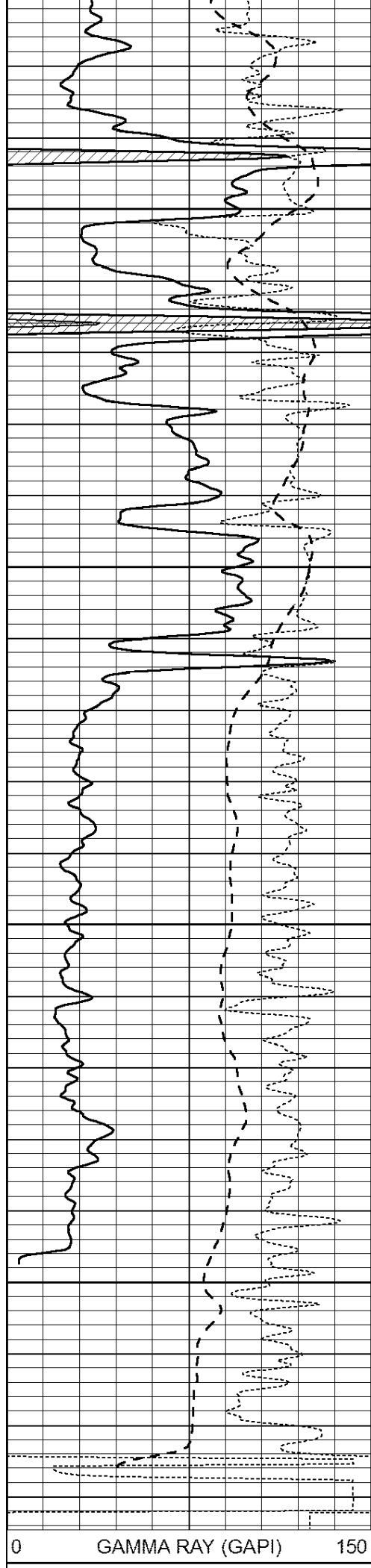
3350

3400

3450

3500





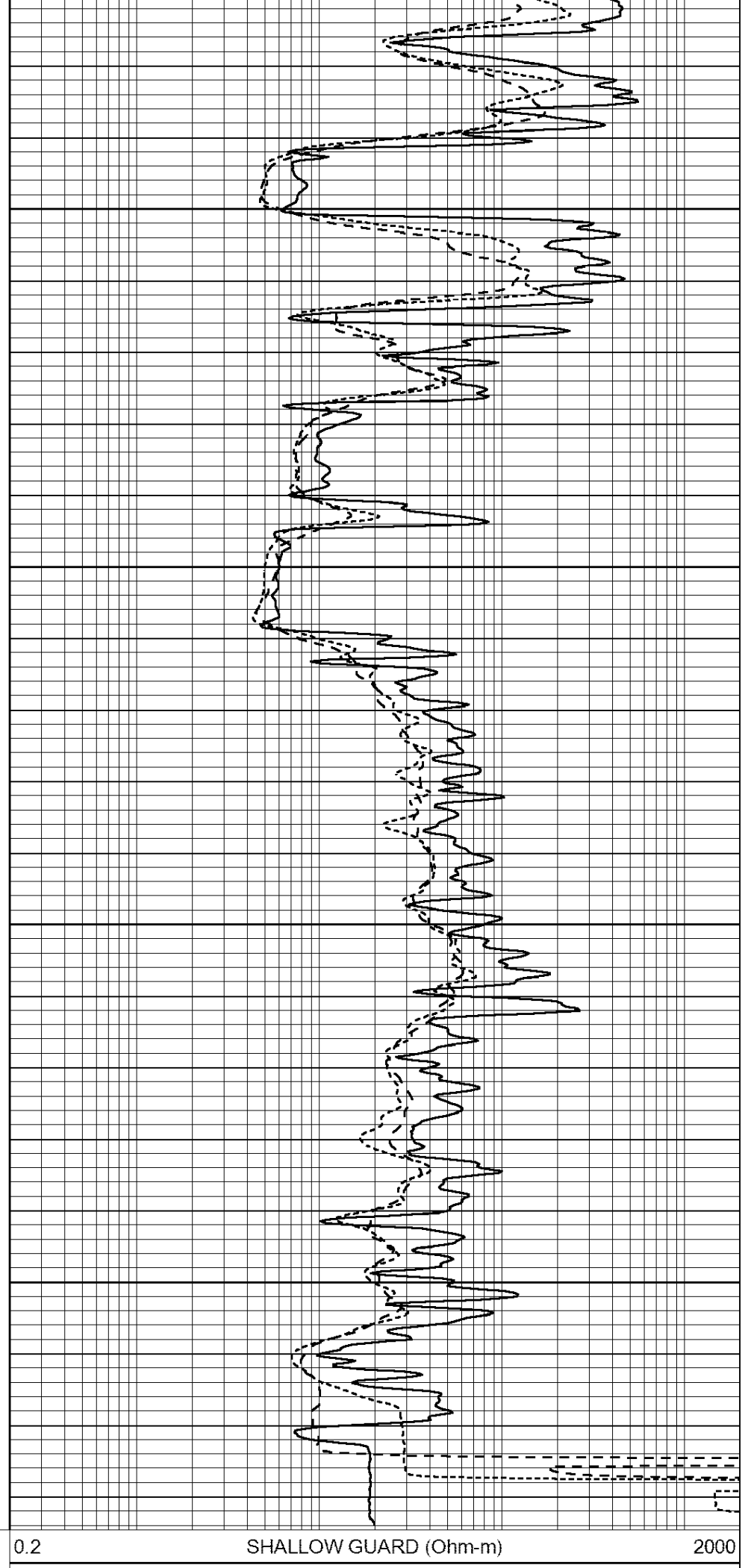
3550

3600

3650

3700

0 GAMMA RAY (GAPI) 150



0.2 SHALLOW GUARD (Ohm-m) 2000

-100	SP (mV)	100	0.2	MEDIUM INDUCTION (Ohm-m)	2000
-250	Rxo/Rt	50	0.2	DEEP INDUCTION (Ohm-m)	2000

Calibration Report

Database File: 26237pe.db
 Dataset Pathname: pass3.1
 Dataset Creation: Tue Oct 14 06:20:05 2014 by Calc Open-Cased 090629

Dual Induction Calibration Report

Serial-Model: PROBE7-DILG
 Surface Cal Performed: Sat Aug 02 01:54:49 2014
 Downhole Cal Performed: Sat Jan 19 19:51:38 2013
 After Survey Verification Performed: Sat Jan 19 19:51:38 2013

Surface Calibration

Loop:	Readings			References			Results	
	Air	Loop		Air	Loop		m	b
Deep	0.793	0.790	V	0.000	400.000	mmho/m	550.000	14.000
Medium	0.992	1.002	V	0.000	464.000	mmho/m	580.000	-32.000
Internal:	Zero	Cal		Zero	Cal		m	b
Deep	0.041	0.642	V	0.000	400.000	mmho/m	664.874	-27.011
Medium	0.035	0.802	V	0.000	464.000	mmho/m	604.936	-21.367

Downhole Calibration

	Readings			References			Results	
	Zero	Cal		Zero	Cal		m'	b'
Deep	135384.000	27094.500	mmho/m	135400.000	27082.400	mmho/m	1.000	-19.259
Medium	-47330.100	-9381.740	mmho/m	-47327.100	-9389.280	mmho/m	1.000	-10.154
LL3		7.322	V		1400.000	Ohm-m		
		0.038	V		20.000	Ohm-m		
		-7.273	V		4000.000	mmho-m		

After Survey Verification

	Readings			Targets			Results	
	Zero	Cal		Zero	Cal		m'	b'
Deep	0.000	0.000	mmho/m	135384.000	27094.500	mmho/m	1.000	0.000
Medium	0.000	0.000	mmho/m	-47330.100	-9381.740	mmho/m	1.000	0.000
LL3		0.000	Ohm-m		1400.000	Ohm-m		
		0.000	Ohm-m		20.000	Ohm-m		
		0.000	mmho-m		4000.000	mmho-m		

Litho Density Calibration Report

Serial: 06 Model: PRB
 Performed Thu Oct 09 14:28:25 2014

Litho Density Calibration

	Background	Magnesium	Aluminum	Sandstone	
Window 1	1287.1	7570.1	2764.0	8150.7	cps
Window 2	1212.7	6261.6	2285.4	6560.4	cps
Window 3	942.6	3263.2	1393.8	3331.0	cps
Window 4	309.7	313.4	308.2	313.9	cps
Long Space	0.0	5048.9	1072.7	5347.6	cps
Short Space	1.6	1713.6	1158.2	1823.5	cps
Rho		1.7100	2.5960	1.3800	g/cc
Pe			2.5700	1.5500	

Rib Angle	: 45.8	Rib Slope	: 1.029	Density/Spine Ratio	: 0.555
Spine Angle	: 75.8	Spine Slope	: 3.954	Spine Intercept	: -20.9

Caliper				
	Readings	Reference		
Low Ref	3.3	8.4		
High Ref	4.8	14.0		
	Gain: 3.5		Offset: -3.0	

Compensated Neutron Calibration Report

Serial Number:	080620
Tool Model:	Probe

PRE-SURVEY VERIFICATION

Detector	Readings	Measured	Target
Short Space	cps		
Long Space	cps	pu	pu

POST-SURVEY VERIFICATION

Detector	Readings	Measured	Target
Short Space	cps		
Long Space	cps	pu	pu

Gamma Ray Calibration Report

Serial Number:	46001	
Tool Model:	Probe1	
Performed:	Sat Aug 02 01:56:52 2014	
Calibrator Value:	1.0	GAPI
Background Reading:	0.0	cps
Calibrator Reading:	1.0	cps
Sensitivity:	0.2600	GAPI/cps