



**COMPLETION
& PRODUCTION
SERVICES CO.**

**COMPENSATED
DENSITY / NEUTRON
LOG**

Company THOMASON PETROLEUM INC.
Well LAMBERT SE #11-1
Field CRESSON
County ROOKS State KANSAS

Company THOMASON PETROLEUM INC.
Well LAMBERT SE #11-1
Field CRESSON
County ROOKS
State KANSAS

Location: API # : 15-163-24248-00-00
2235' FSL & 1655' FEL
SW - NE - NW - SE
SEC 11 TWP 9S RGE 20W
Permanent Datum GROUND LEVEL Elevation 2118
Log Measured From KELLY BUSHING 8' A.G.L.
Drilling Measured From KELLY BUSHING
Other Services
DILMEL
SONIC
Elevation
K.B. 2126
D.F. 2124
G.L. 2118

Date	10/14/14		
Run Number	ONE		
Depth Driller	3720		
Depth Logger	3722		
Bottom Logged Interval	3720		
Top Log Interval	3000		
Casing Driller	8 5/8 @ 221'		
Casing Logger	223'		
Bit Size	7.875		
Type Fluid in Hole	CHEMICAL MUD		
Density / Viscosity	9.144	CHLORIDES 1,400 PPM	
pH / Fluid Loss	10.0/7.6		
Source of Sample	FLOWLINE		
Rm @ Meas. Temp	1.00 @ 78F		
Rmf @ Meas. Temp	0.75 @ 78F		
Rmc @ Meas. Temp	1.20 @ 78F		
Source of Rmf / Rmc	MEASURED		
Rm @ BHT	0.70 @ 112F		
Time Circulation Stopped	2 HOURS		
Time Logger on Bottom			
Maximum Recorded Temperature	112F		
Equipment Number	3802		
Location	HAYS, KS.		
Recorded By	IAN MABB		
Witnessed By	KEITH REAVIS		

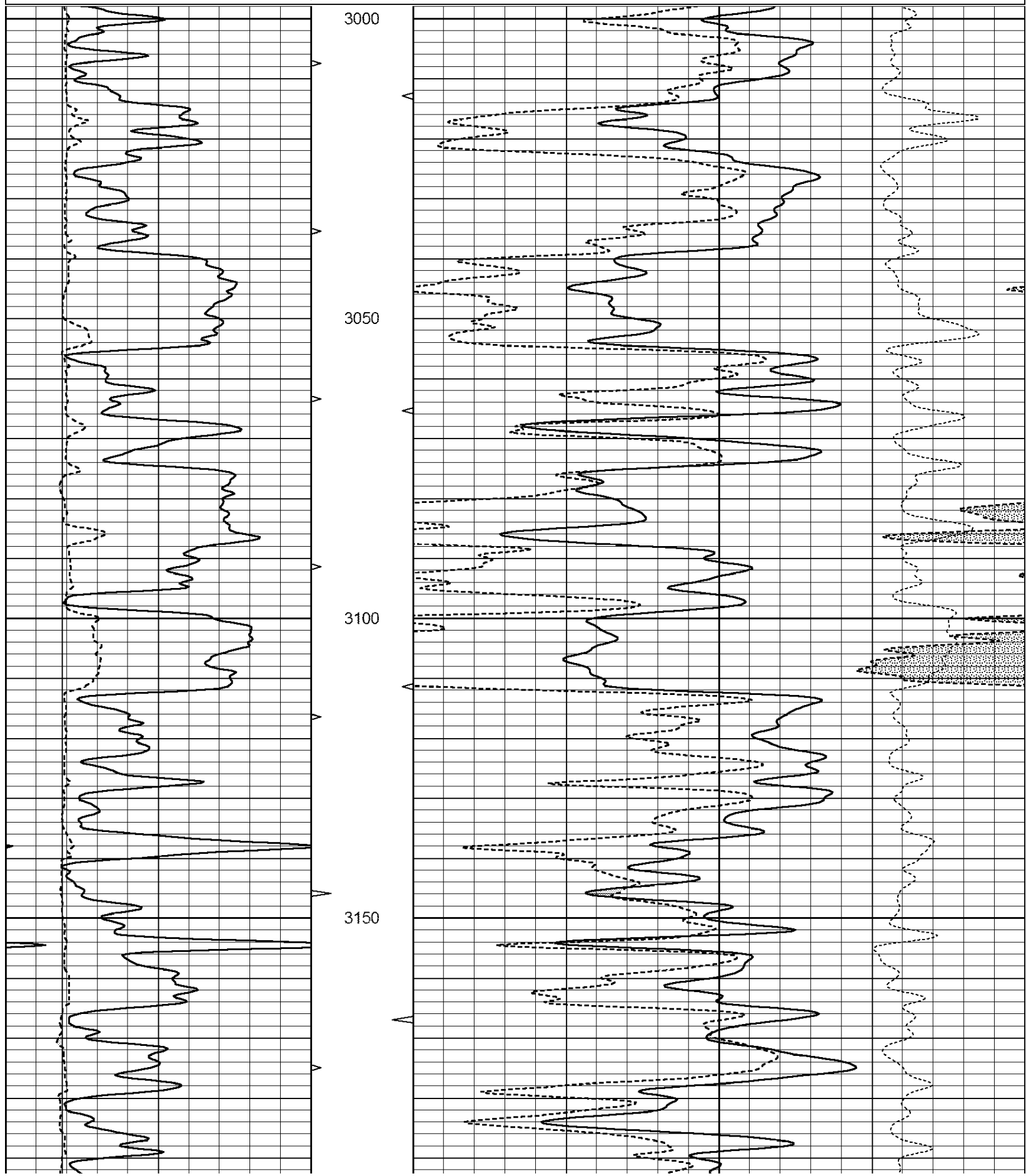
<<< Fold Here >>>

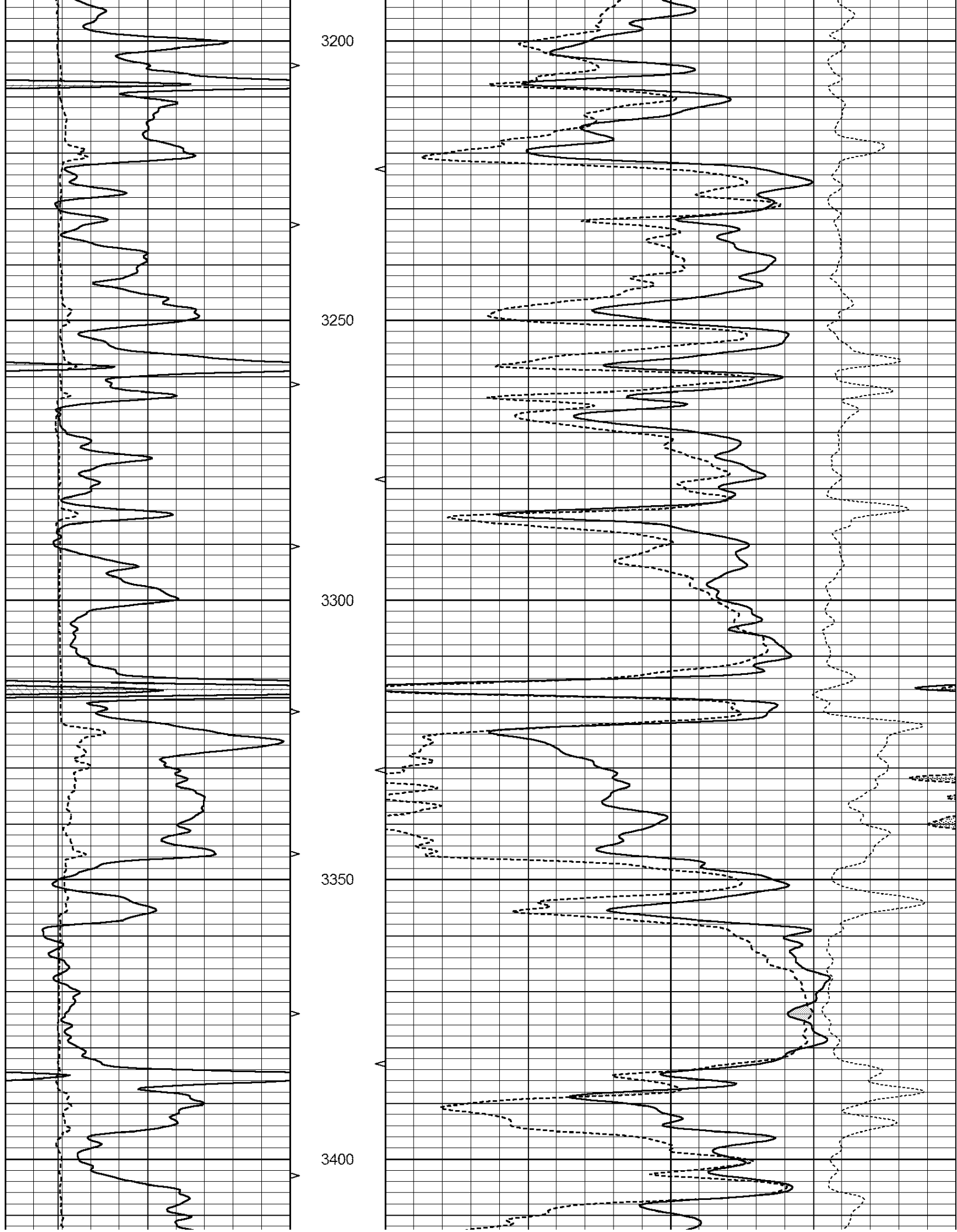
All interpretations are opinions based on inferences from electrical or other measurements and we cannot and do not guarantee the accuracy or correctness of any interpretation, and we shall not, except in the case of gross or willful negligence on our part, be liable or responsible for any loss, costs, damages, or expenses incurred or sustained by anyone resulting from any interpretation made by any of our officers, agents or employees. These interpretations are also subject to our general terms and conditions set out in our current Price Schedule.

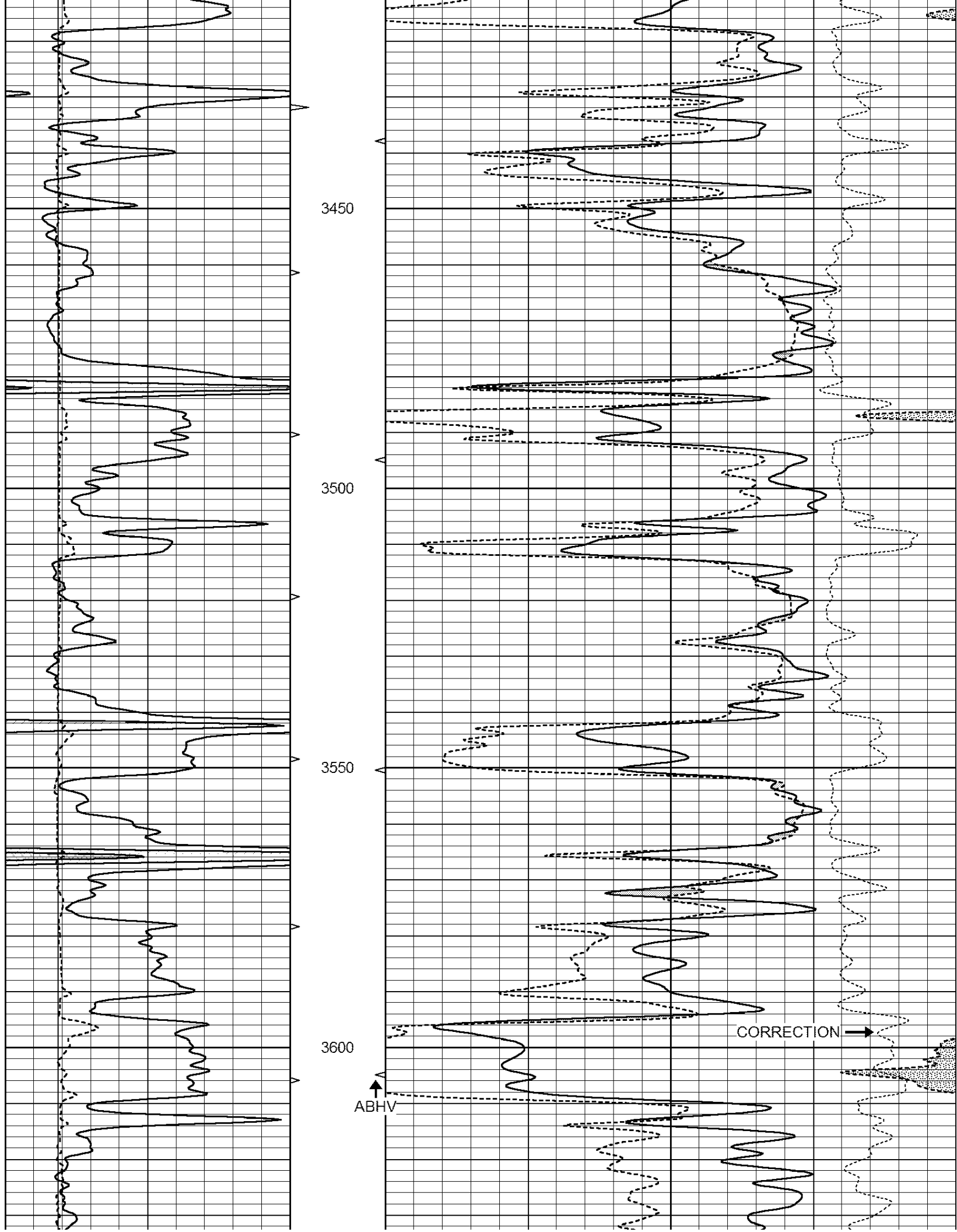
Comments

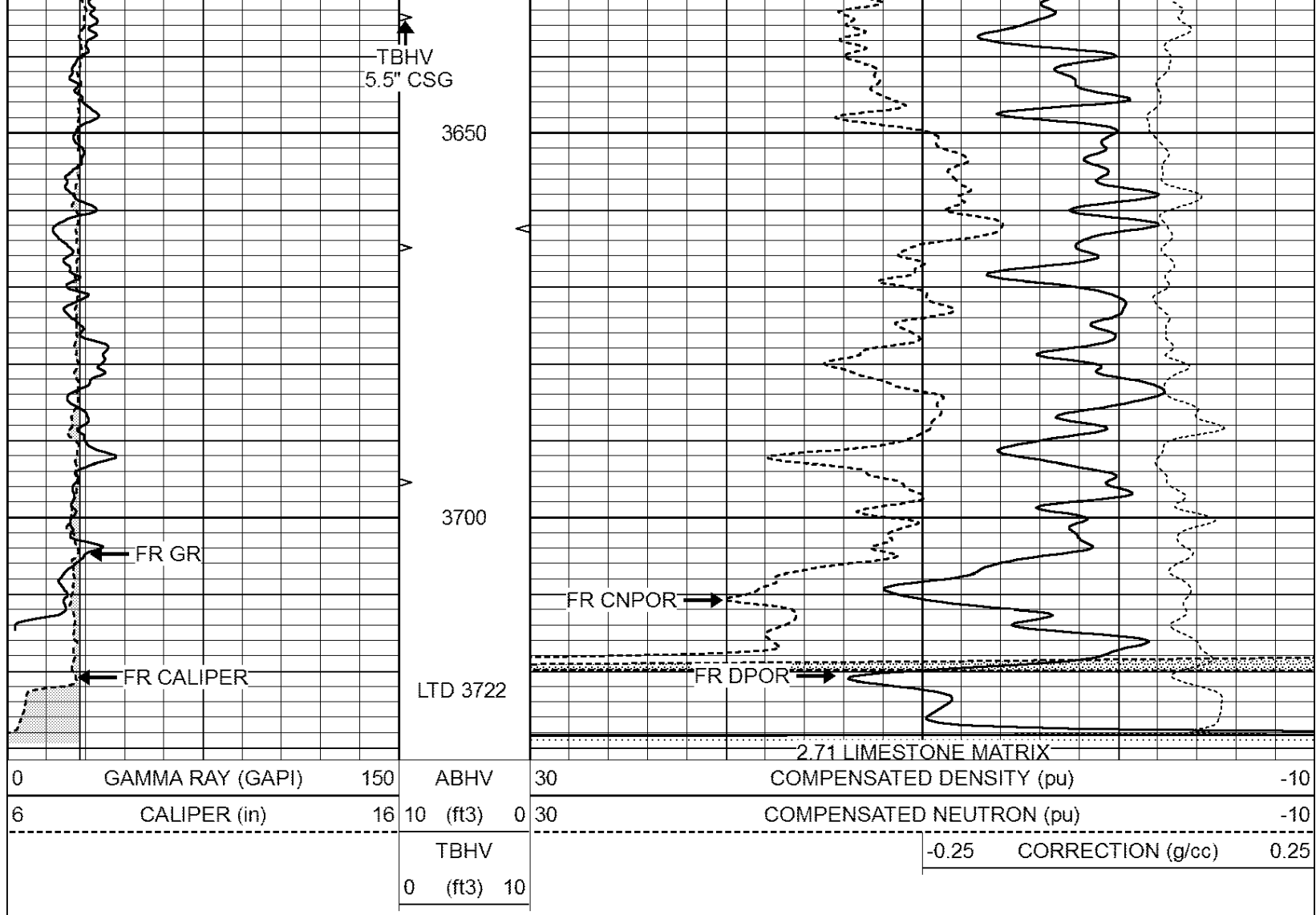
NABORS COMPLETION & PRODUCTION SERVICES CO.
785 (628 - 6395)
THANK YOU FOR YOUR BUSINESS
DIRECTIONS : ZURICH, KS. - 3 MILES NORTH - 4 MILES WEST - 1/2 MILE NORTH - WEST INTO

0	GAMMA RAY (GAPI)	150	ABHV	30	COMPENSATED DENSITY (pu)	-10
6	CALIPER (in)	16	10 (ft3)	0 30	COMPENSATED NEUTRON (pu)	-10
			TBHV	-0.25	CORRECTION (g/cc)	0.25
			0 (ft3)	10		









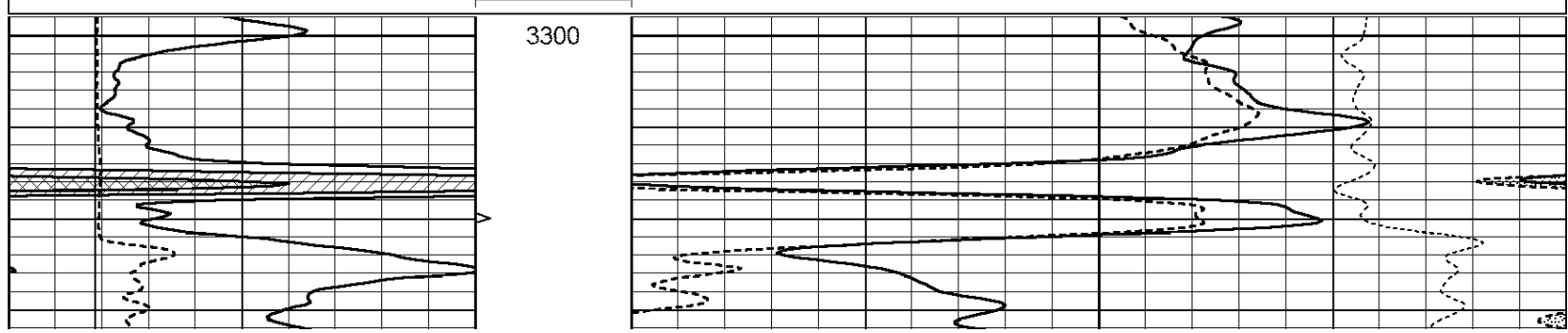
0	GAMMA RAY (GAPI)	150	ABHV	30	COMPENSATED DENSITY (pu)	-10
6	CALIPER (in)	16	10 (ft3) 0	30	COMPENSATED NEUTRON (pu)	-10
			TBHV	-0.25	CORRECTION (g/cc)	0.25
			0 (ft3) 10			

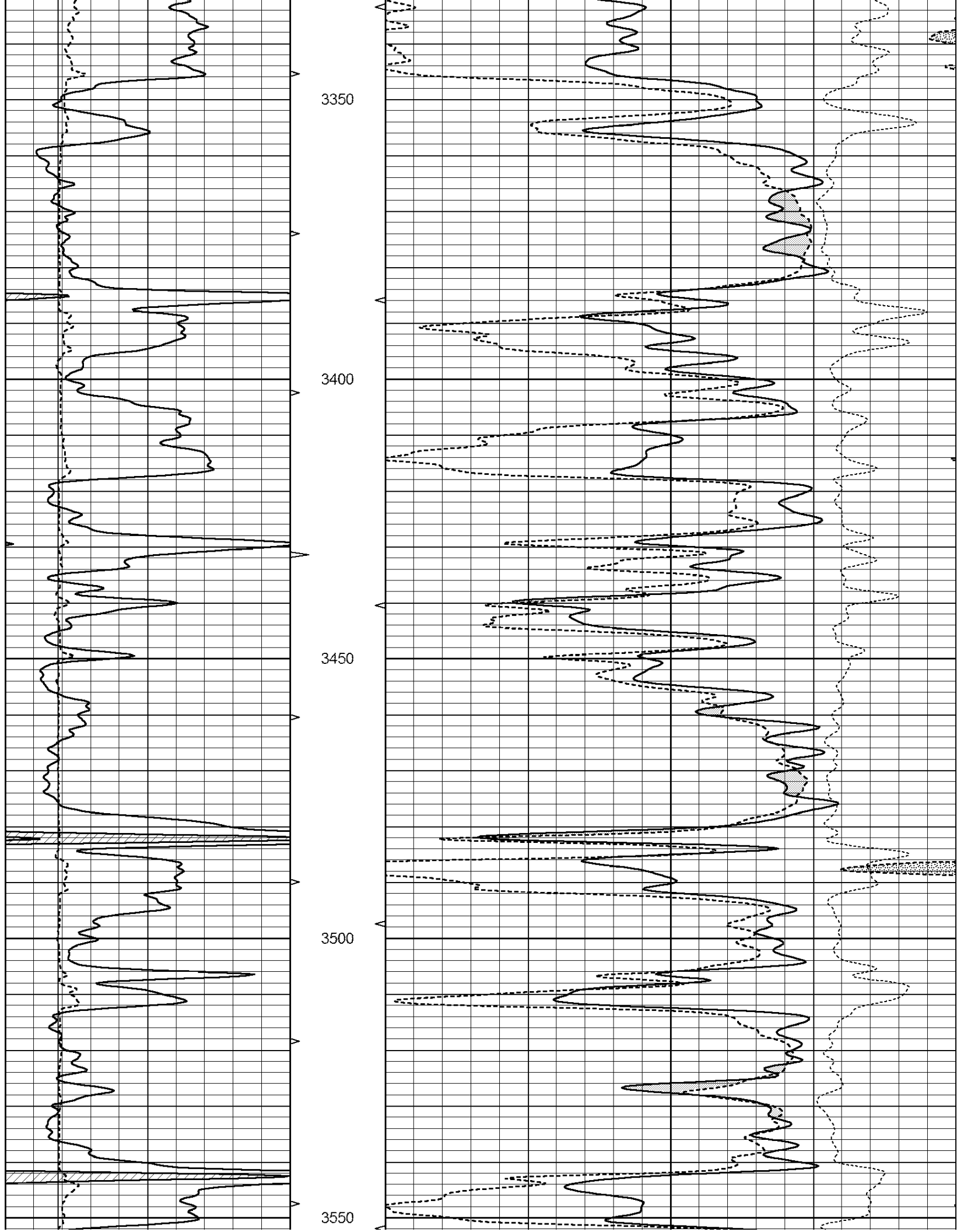


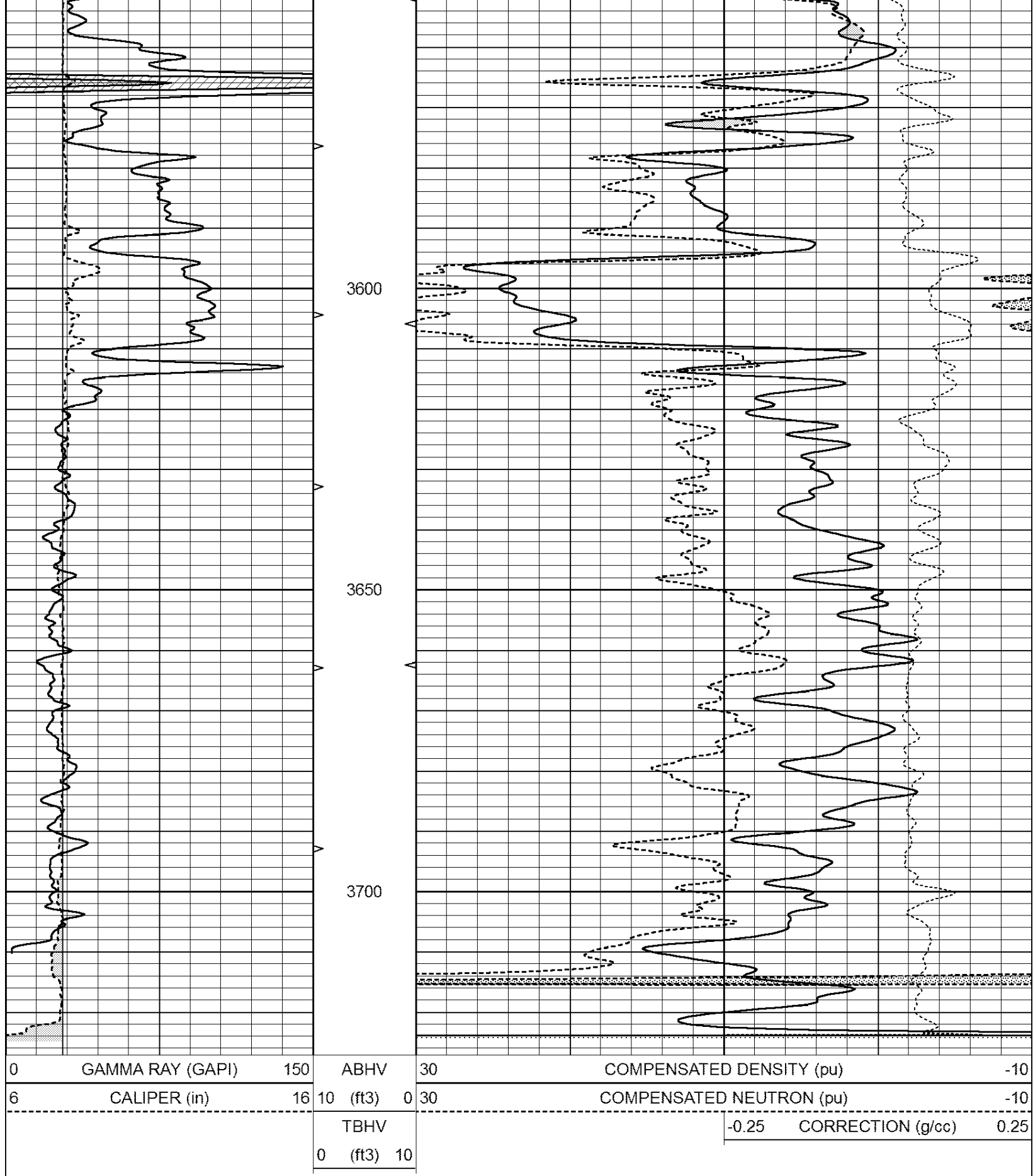
REPEAT SECTION

Database File: 26237pe.db
 Dataset Pathname: pass6.2
 Presentation Format: _ldt_neu
 Dataset Creation: Tue Oct 14 08:03:07 2014
 Charted by: Depth in Feet scaled 1:240

0	GAMMA RAY (GAPI)	150	ABHV	30	COMPENSATED DENSITY (pu)	-10
6	CALIPER (in)	16	10 (ft3) 0	30	COMPENSATED NEUTRON (pu)	-10
			TBHV	-0.25	CORRECTION (g/cc)	0.25
			0 (ft3) 10			







Calibration Report

Database File: 26237pe.db
 Dataset Pathname: pass5.2
 Dataset Creation: Tue Oct 14 07:36:15 2014

Litho Density Calibration

	Background	Magnesium	Aluminum	Sandstone	
Window 1	1833.3	8239.1	3179.3	9365.4	cps
Window 2	1708.4	7189.1	2862.8	8058.6	cps
Window 3	1391.6	4030.0	1937.3	4384.2	cps
Window 4	414.3	417.6	417.2	416.2	cps
Long Space	0.0	5480.6	1154.3	6350.2	cps
Short Space	3.1	1831.8	1190.6	2030.8	cps
Rho		1.7100	2.5900	1.3800	g/cc
Pe			2.5700	1.5500	
Rib Angle	: 44.5	Rib Slope	: 0.984	Density/Spine Ratio	: 0.544
Spine Angle	: 74.5	Spine Slope	: 3.615	Spine Intercept	: -18.6

Caliper	Readings	Reference	
Low Ref	3.5	8.3	
High Ref	5.4	14.0	
	Gain: 2.0		Offset: 1.5

Compensated Neutron Calibration Report

Serial Number: 080620
 Tool Model: Probe

PRE-SURVEY VERIFICATION

Detector	Readings	Measured	Target
Short Space	cps		
Long Space	cps	pu	pu

POST-SURVEY VERIFICATION

Detector	Readings	Measured	Target
Short Space	cps		
Long Space	cps	pu	pu

Gamma Ray Calibration Report

Serial Number: 46001
 Tool Model: Probe1
 Performed: Sat Aug 02 01:56:52 2014

Calibrator Value: 1.0 GAPI

Background Reading: 0.0 cps
 Calibrator Reading: 1.0 cps

Sensitivity: 0.2600 GAPI/cps