



**COMPLETION
& PRODUCTION
SERVICES CO.**

**MICRO
LOG**

Company THOMASON PETROLEUM INC.
Well LAMBERT SE #11-1
Field CRESSON
County ROOKS State KANSAS

Company THOMASON PETROLEUM INC.
Well LAMBERT SE #11-1
Field CRESSON
County ROOKS
State KANSAS

Location: API #: 15-163-24248-00-00
2235' FSL & 1655' FEL
SW - NE - NW - SE
SEC 11 TWP 9S RGE 20W
Permanent Datum GROUND LEVEL Elevation 2118
Log Measured From KELLY BUSHING 8' A.G.L.
Drilling Measured From KELLY BUSHING
Other Services
CNL/CDL
DIL/SON
Elevation
K.B. 2126
D.F. 2124
G.L. 2118

Date	10/14/14		
Run Number	TWO		
Depth Driller	3720		
Depth Logger	3722		
Bottom Logged Interval	3704		
Top Log Interval	3000		
Casing Driller	8 5/8 @ 221'		
Casing Logger	223'		
Bit Size	7.875		
Type Fluid in Hole	CHEMICAL MUD		
Density / Viscosity	9.1/44	CHLORIDES 1,400 PPM	
pH / Fluid Loss	10.0/7.6		
Source of Sample	FLOWLINE		
Rm @ Meas. Temp	1.00 @ 78F		
Rmf @ Meas. Temp	0.75 @ 78F		
Rmc @ Meas. Temp	1.20 @ 78F		
Source of Rmf / Rmc	MEASURED		
Rm @ BHT	0.70 @ 112F		
Time Circulation Stopped	2 HOURS		
Time Logger on Bottom			
Maximum Recorded Temperature	112F		
Equipment Number	3802		
Location	HAYS, KS.		
Recorded By	IAN MABB		
Witnessed By	KEITH REAVIS		

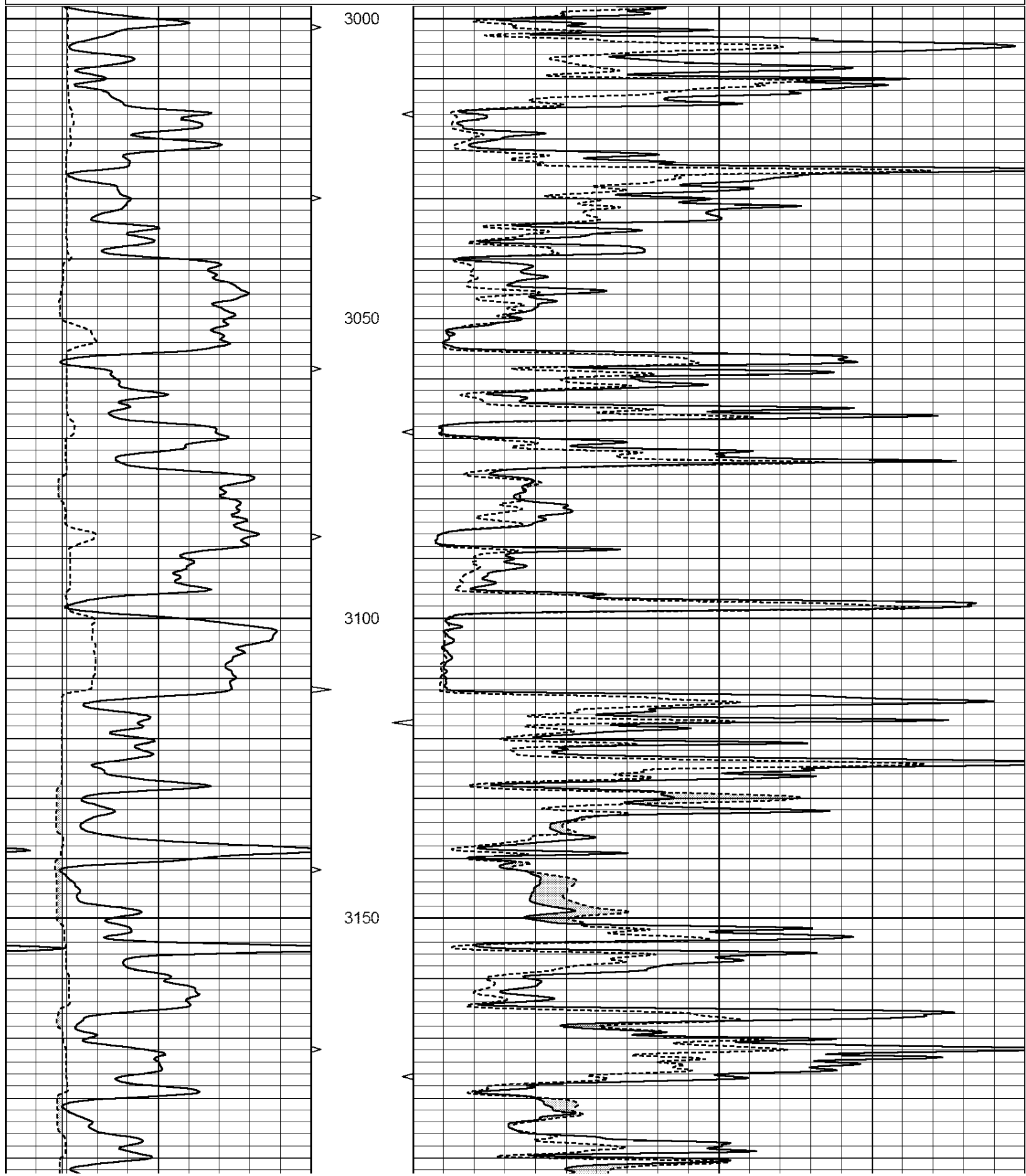
<<< Fold Here >>>

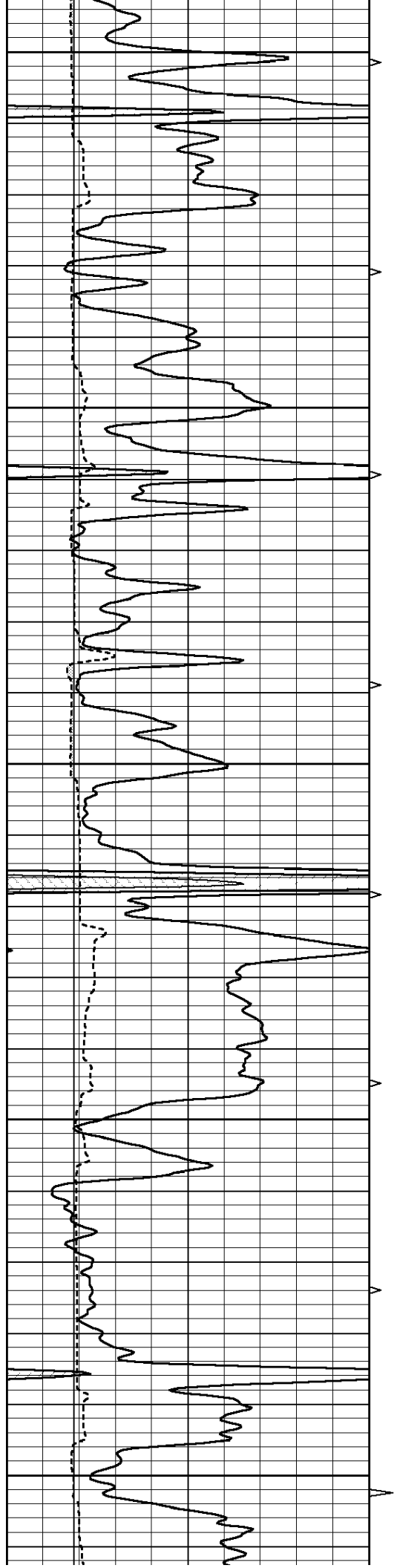
All interpretations are opinions based on inferences from electrical or other measurements and we cannot and do not guarantee the accuracy or correctness of any interpretation, and we shall not, except in the case of gross or willful negligence on our part, be liable or responsible for any loss, costs, damages, or expenses incurred or sustained by anyone resulting from any interpretation made by any of our officers, agents or employees. These interpretations are also subject to our general terms and conditions set out in our current Price Schedule.

Comments

NABORS COMPLETION & PRODUCTION SERVICES CO.
785 (628 - 6395)
THANK YOU FOR YOUR BUSINESS
DIRECTIONS : ZURICH, KS. - 3 MILES NORTH - 4 MILES WEST - 1/2 MILE NORTH - WEST INTO

0	GAMMA RAY (GAPI)	150	ABHV	0	MEL1.5 (Ohm-m)	40
6	CALIPER (in)	16	10 (ft3)	0 0	MEL2.0 (Ohm-m)	40
			TBHV			
			0 (ft3)	10		





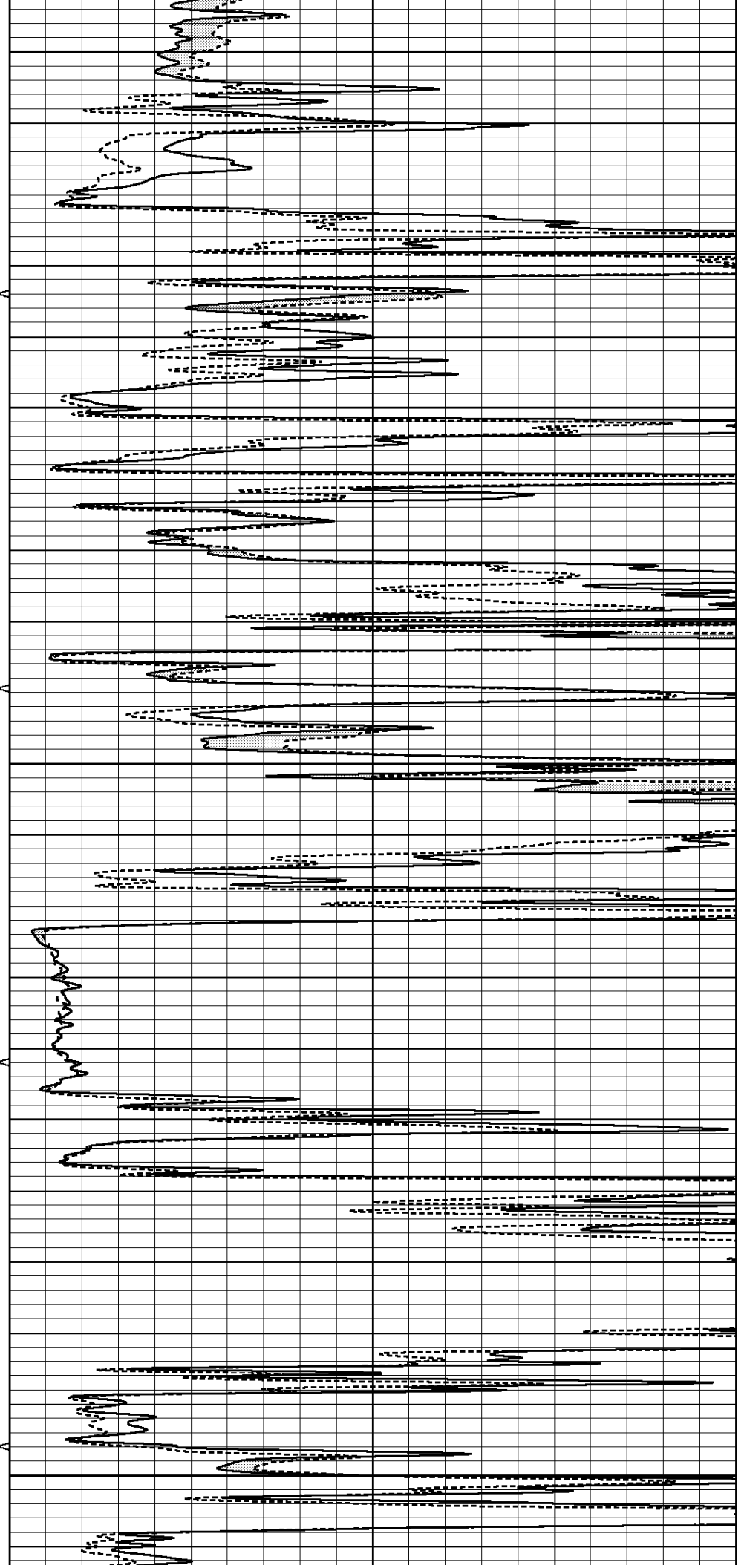
3200

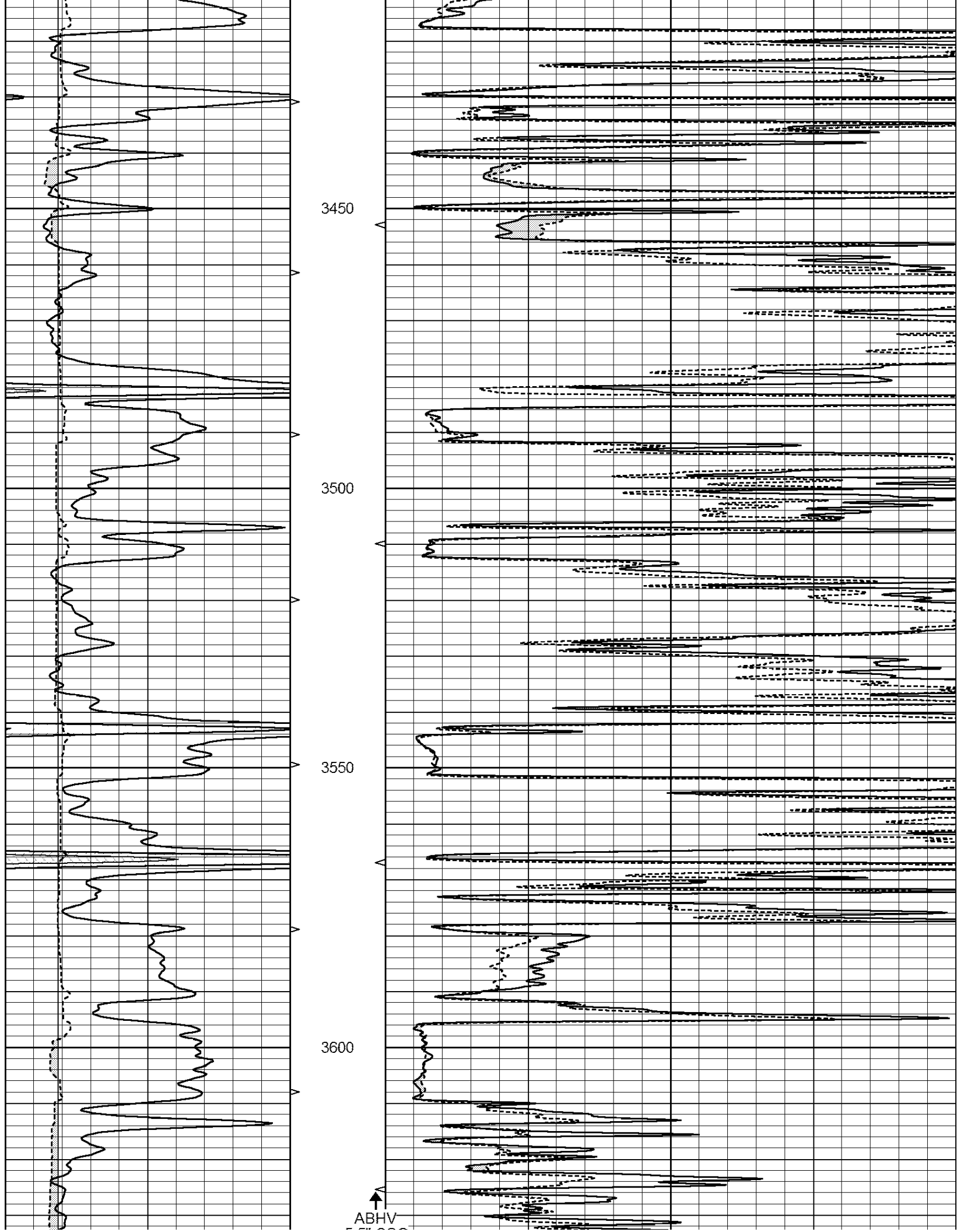
3250

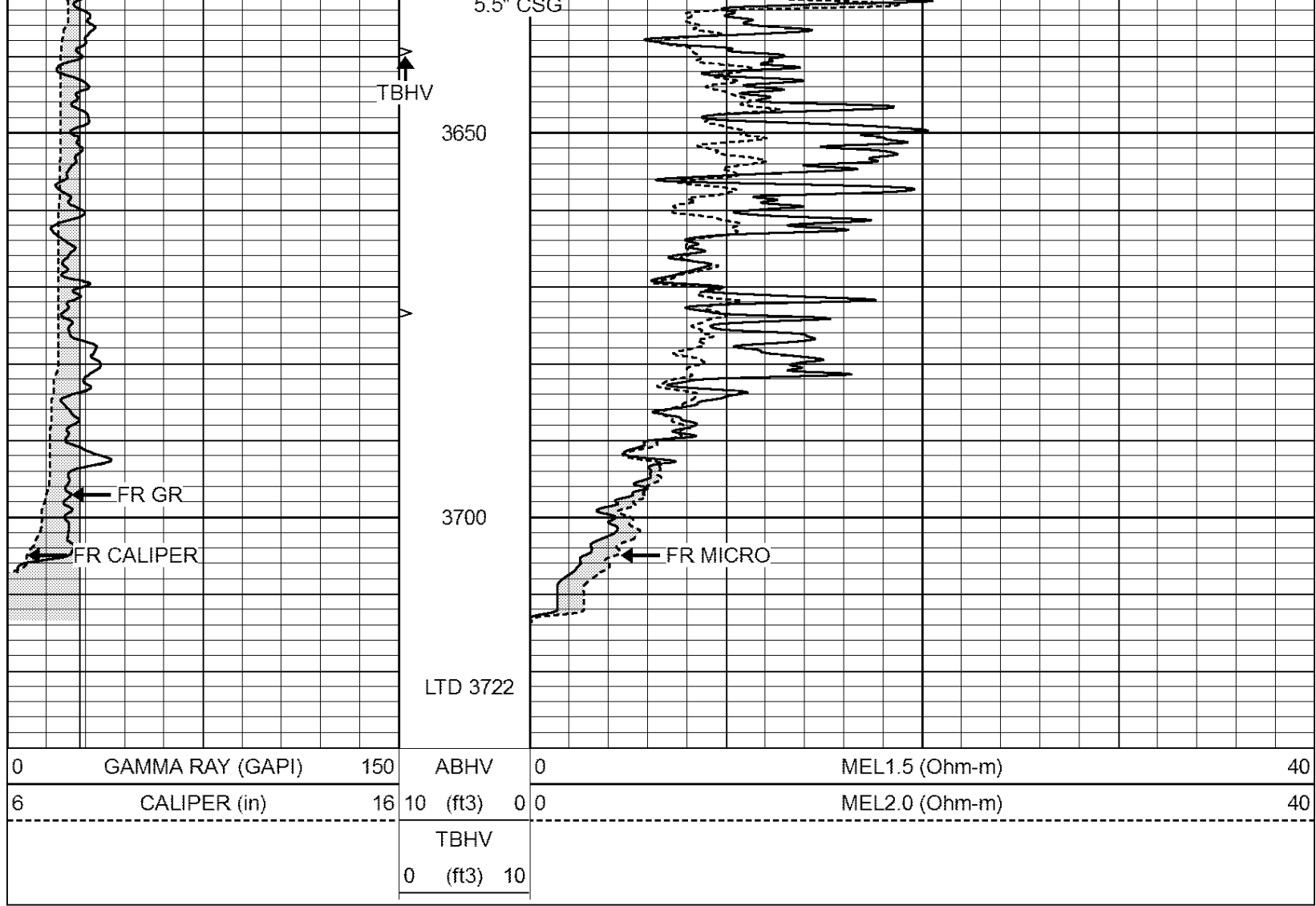
3300

3350

3400





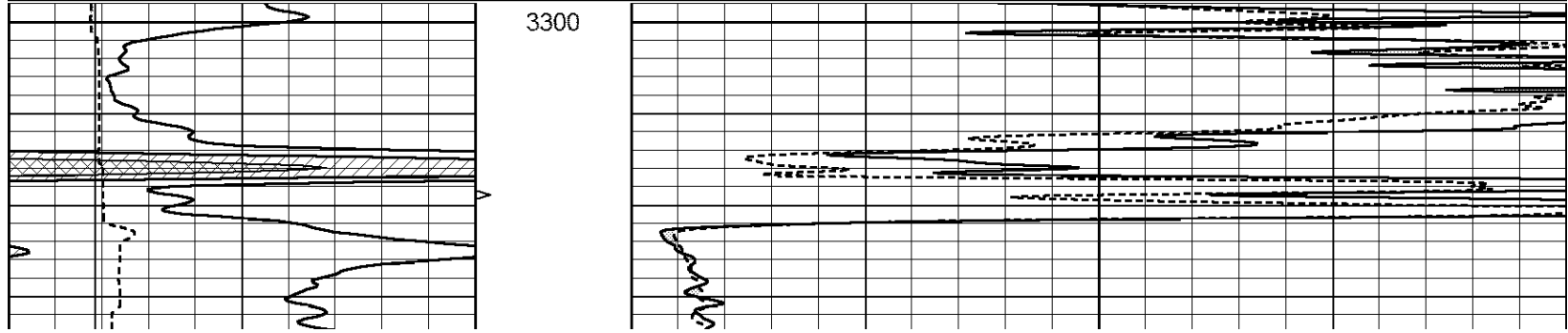


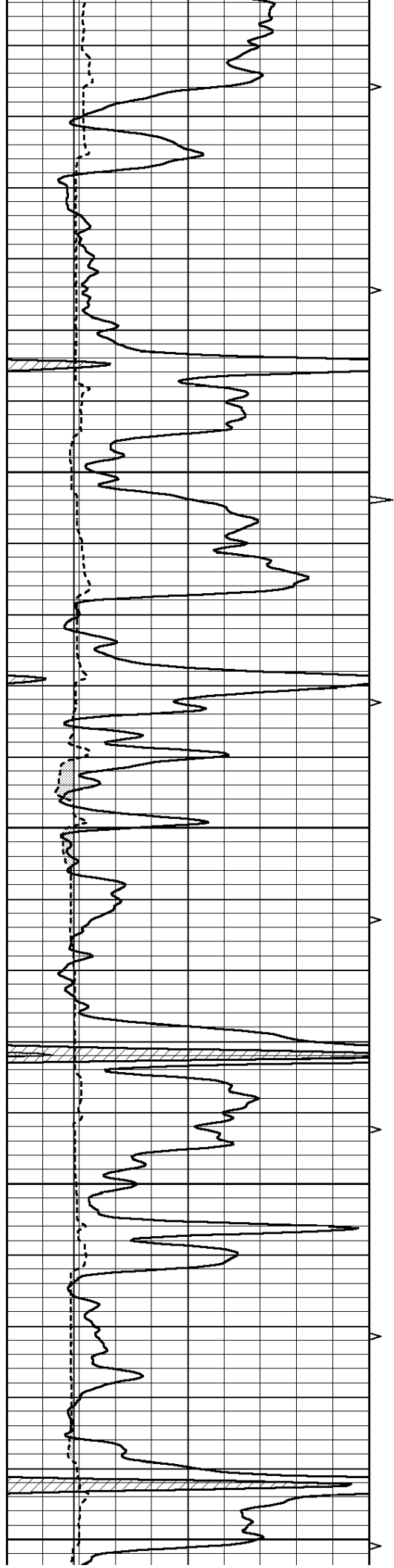
NABORS
COMPLETION & PRODUCTION SERVICES CO.

REPEAT SECTION

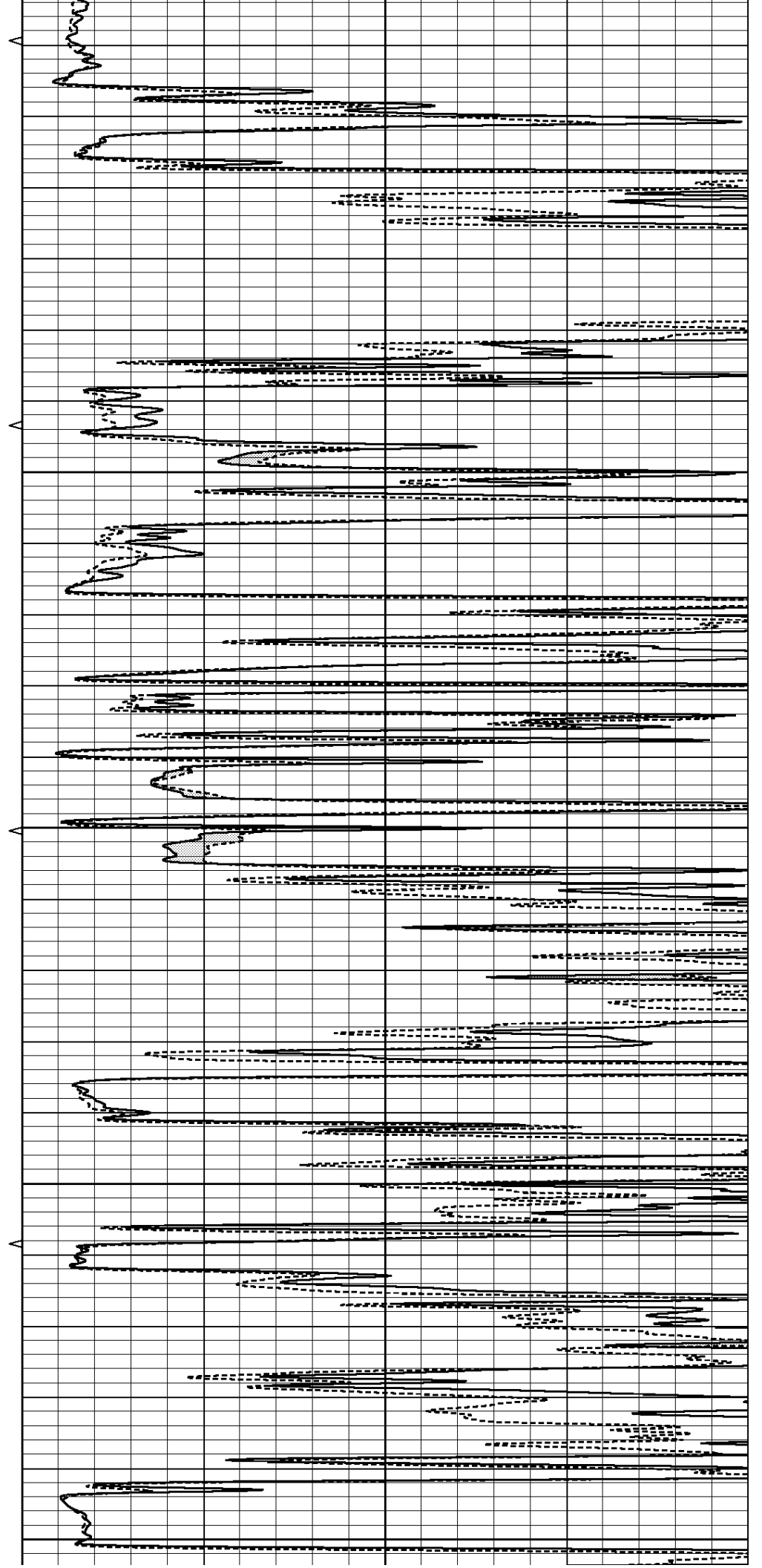
Database File: 26237pe.db
 Dataset Pathname: pass8.1
 Presentation Format: _micro
 Dataset Creation: Tue Oct 14 09:02:38 2014 by Calc Open-Cased 090629
 Charted by: Depth in Feet scaled 1:240

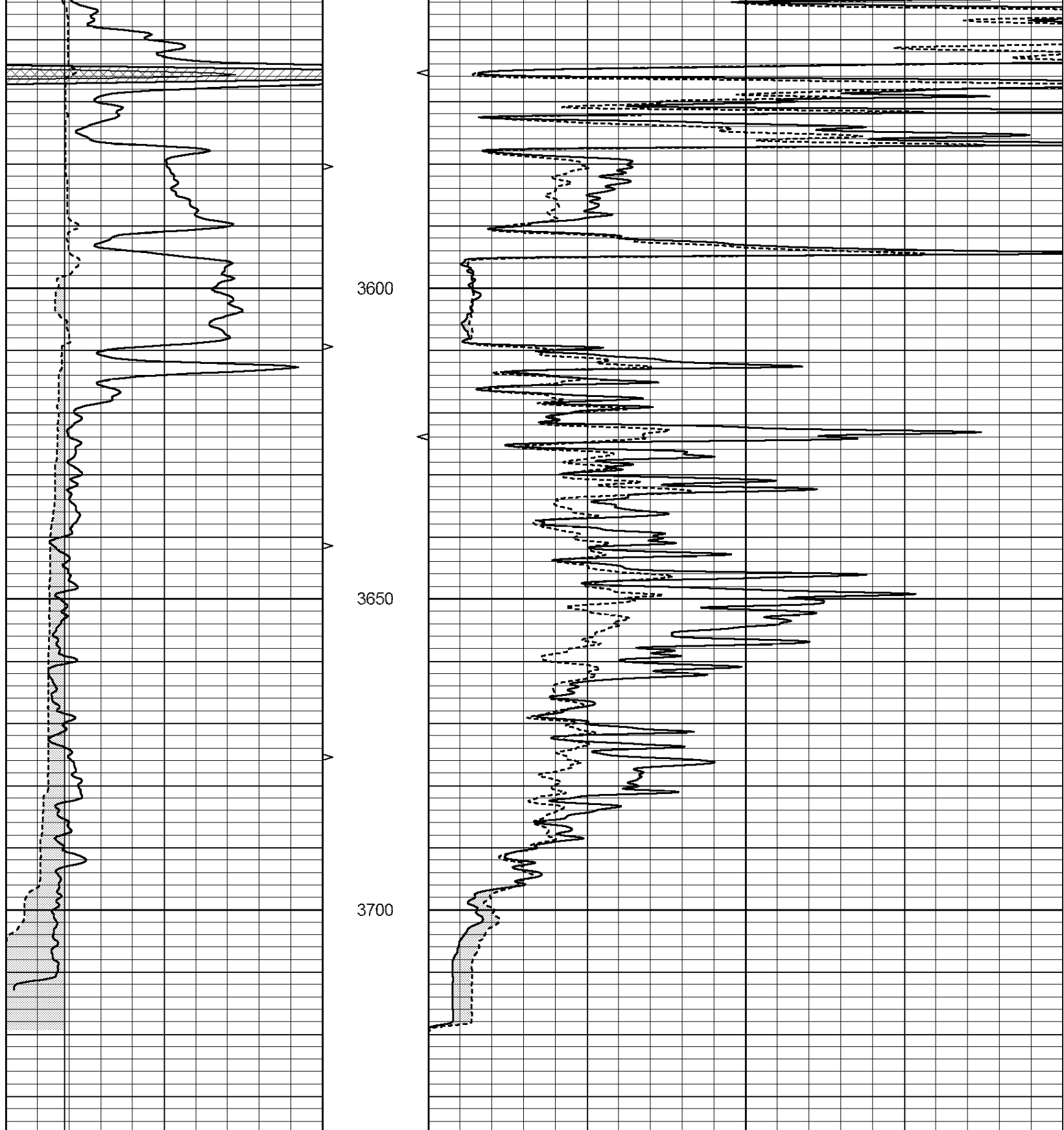
0	GAMMA RAY (GAPI)	150	ABHV	0	MEL1.5 (Ohm-m)	40
6	CALIPER (in)	16	10 (ft3) 0 0	0 0	MEL2.0 (Ohm-m)	40
			TBHV			
			0 (ft3) 10			





3350
3400
3450
3500
3550





0	GAMMA RAY (GAPI)	150	ABHV	0	MEL1.5 (Ohm-m)	40
6	CALIPER (in)	16	10 (ft3)	0 0	MEL2.0 (Ohm-m)	40
			TBHV			
			0 (ft3)	10		

Calibration Report

Database File: 26237pe.db
 Dataset Pathname: pass9.1
 Dataset Creation: Tue Oct 14 00:26:22 2014 by Gale Open Guard 000000

MICRO Calibration Report

Serial Number:	MICRO6
Tool Model:	PROBE
Performed:	Sat Oct 11 07:34:19 2014

Caliper Calibration:	Gain=7.375	Offset=2.200
	Low Cal	High Cal
References	7.800	14.000
Readings	0.767	1.608

1.5" Calibration:	Gain=30.000	Offset=0.000
	Low Cal	High Cal
References	0.000	20.000
Readings	0.004	0.843

2" Calibration:	Gain=38.000	Offset=0.100
	Low Cal	High Cal
References	0.000	20.000
Readings	0.021	0.810

Gamma Ray Calibration Report

Serial Number:	7	
Tool Model:	Probe1	
Performed:	Fri Jul 18 12:11:13 2014	
Calibrator Value:	1.0	GAPI
Background Reading:	0.0	cps
Calibrator Reading:	1.0	cps
Sensitivity:	0.5000	GAPI/cps