

**COMPLETION
& PRODUCTION
SERVICES CO.**

**DUAL
INDUCTION
LOG**

Company VINCENT OIL CORPORATION
Well MARFAM #2-32
Field FAGER EAST
County FORD State KANSAS

Company VINCENT OIL CORPORATION
Well MARFAM #2-32
Field FAGER EAST
County FORD
State KANSAS

Location: API #: 15-057-20933-0000
421' FSL & 371' FWL
SEC 32 TWP 29S RGE 24W
Permanent Datum GROUND LEVEL Elevation 2564
Log Measured From KELLY BUSHING 10' A.G.L.
Drilling Measured From KELLY BUSHING
Other Services
CDL/CNL
Elevation
K.B. 2574
D.F. 2572
G.L. 2564

Date	7/15/14		
Run Number	ONE		
Depth Driller	5430		
Depth Logger	5419		
Bottom Logged Interval	5417		
Top Log Interval	00		
Casing Driller	8 5/8 @ 644		
Casing Logger	644		
Bit Size	7.875		
Type Fluid in Hole	CHEMICAL MUD		
Density / Viscosity	9.2/57	CHLORIDES 12800 PPM	
pH / Fluid Loss	10.5/13.6		
Source of Sample	FLOWLINE		
Rm @ Meas. Temp	.30 @ 90F		
Rmf @ Meas. Temp	.22 @ 90F		
Rmc @ Meas. Temp	.36 @ 90F		
Source of Rmf / Rmc	MEASURED		
Rm @ BHT	.20 @ 129F		
Time Circulation Stopped	2 HOURS		
Time Logger on Bottom			
Maximum Recorded Temperature	129F		
Equipment Number	3802		
Location	HAYS, KS.		
Recorded By	JASON CAPPELLUCCI		
Witnessed By	TOM DUDGEON		

<<< Fold Here >>>

All interpretations are opinions based on inferences from electrical or other measurements and we cannot and do not guarantee the accuracy or correctness of any interpretation, and we shall not, except in the case of gross or willful negligence on our part, be liable or responsible for any loss, costs, damages, or expenses incurred or sustained by anyone resulting from any interpretation made by any of our officers, agents or employees. These interpretations are also subject to our general terms and conditions set out in our current Price Schedule.

Comments

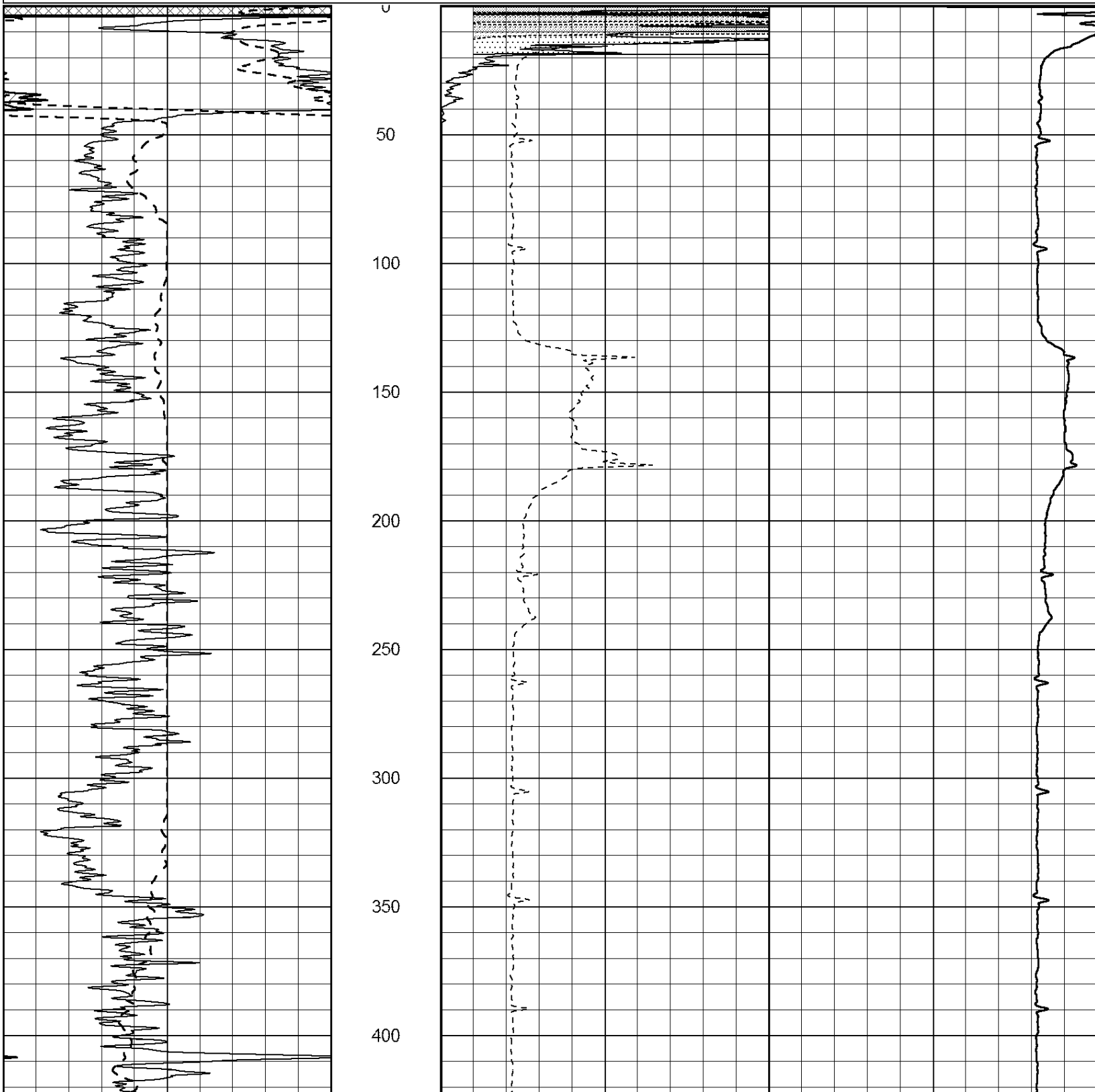
NABORS COMPLETION & PRODUCTION SERVICES CO.
785 (628 - 6395)
THANK YOU FOR YOUR BUSINESS
DIRECTIONS : DODGE CITY, KS. - SOUTH TO YUCCA RD. - 2 EAST TO 113 RD.
1 SOUTH - EAST INTO

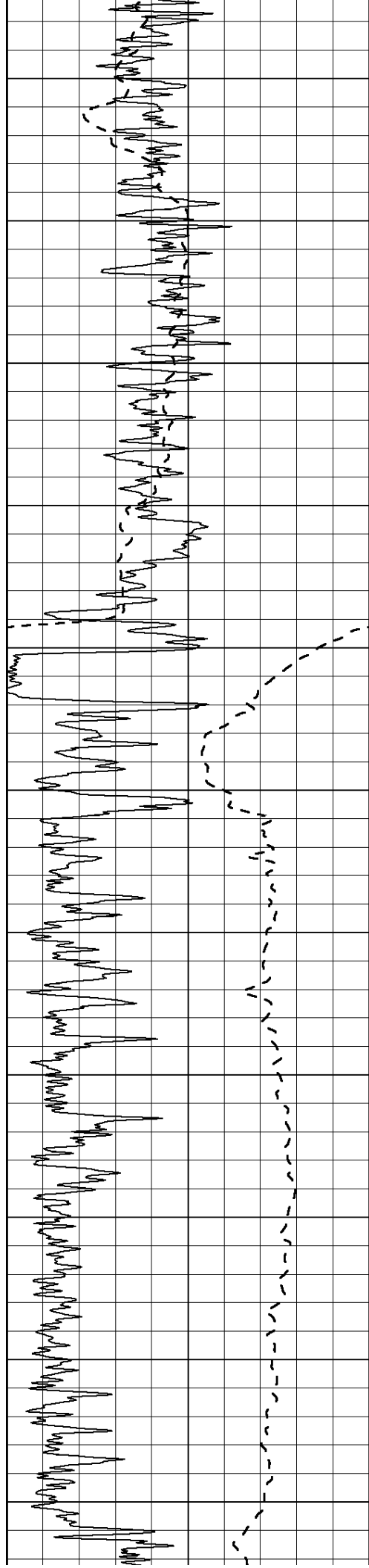


MAIN SECTION

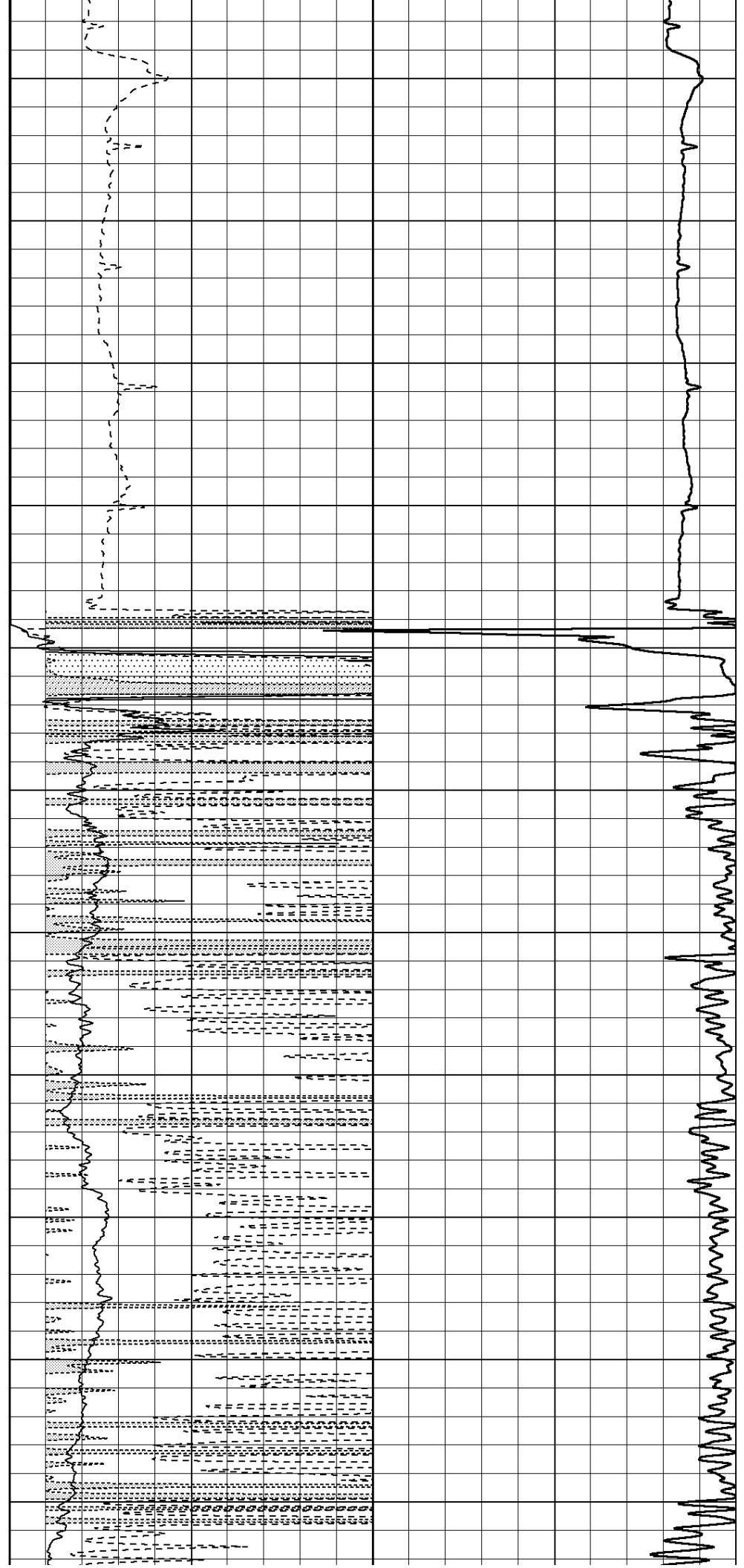
Database File: 24706pe.db
 Dataset Pathname: pass4.2
 Presentation Format: _dil2
 Dataset Creation: Tue Jul 15 21:58:21 2014 by Calc Open-Cased 090629
 Charted by: Depth in Feet scaled 1:600

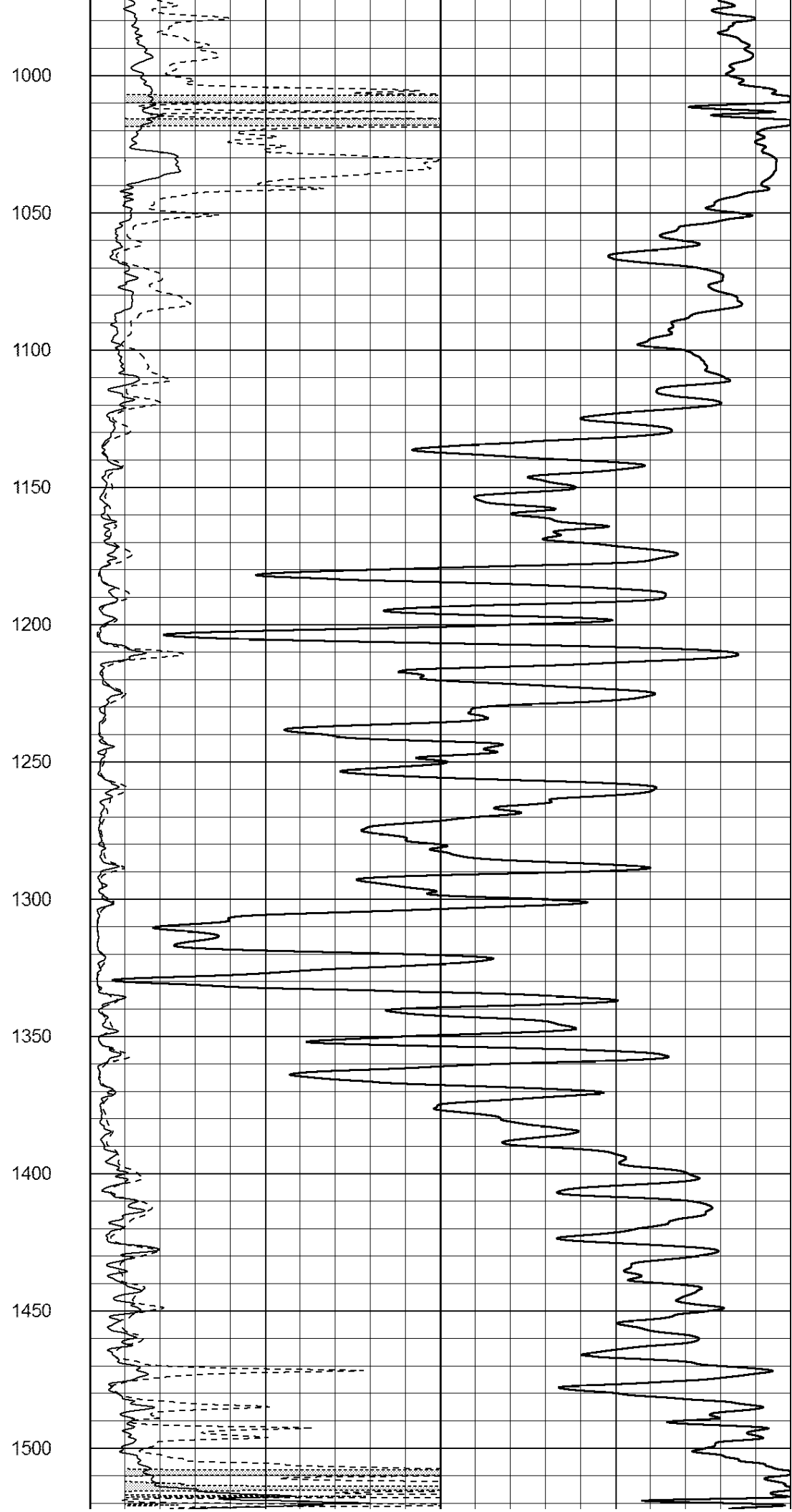
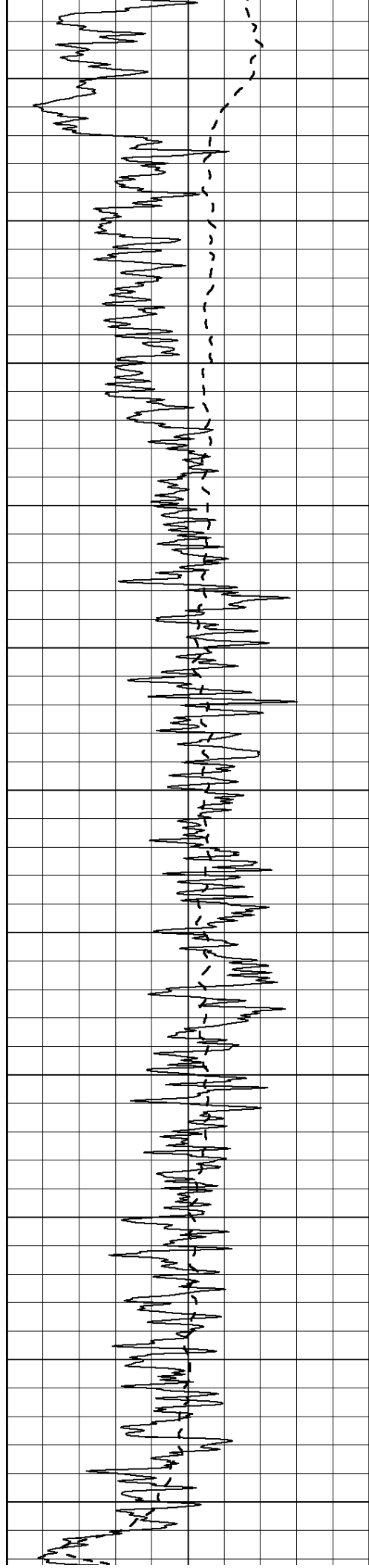
0	Gamma Ray (GAPI)	150	0	RLL3 (Ohm-m)	50
			0	Deep Induction (Ohm-m)	50
			1000	CILD (mmho/m)	0
			50	RILD X10 (Ohm-m)	500
			50	RLL3 X10 (Ohm-m)	500

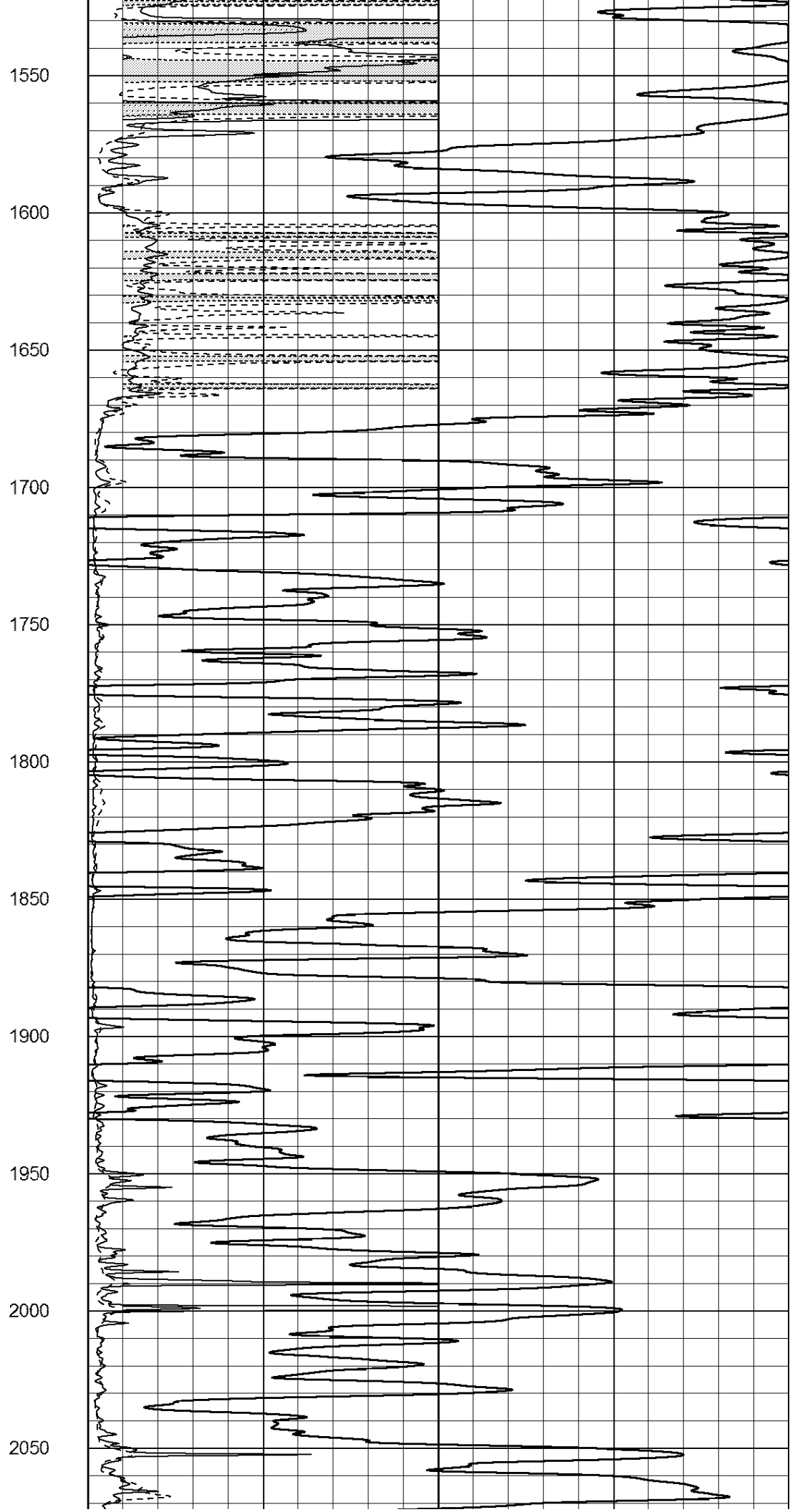
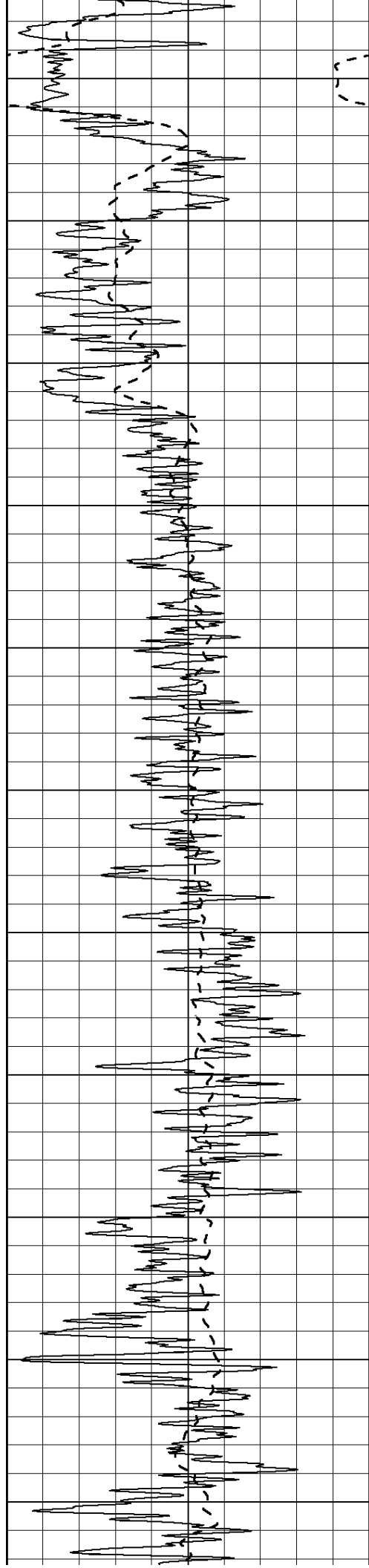


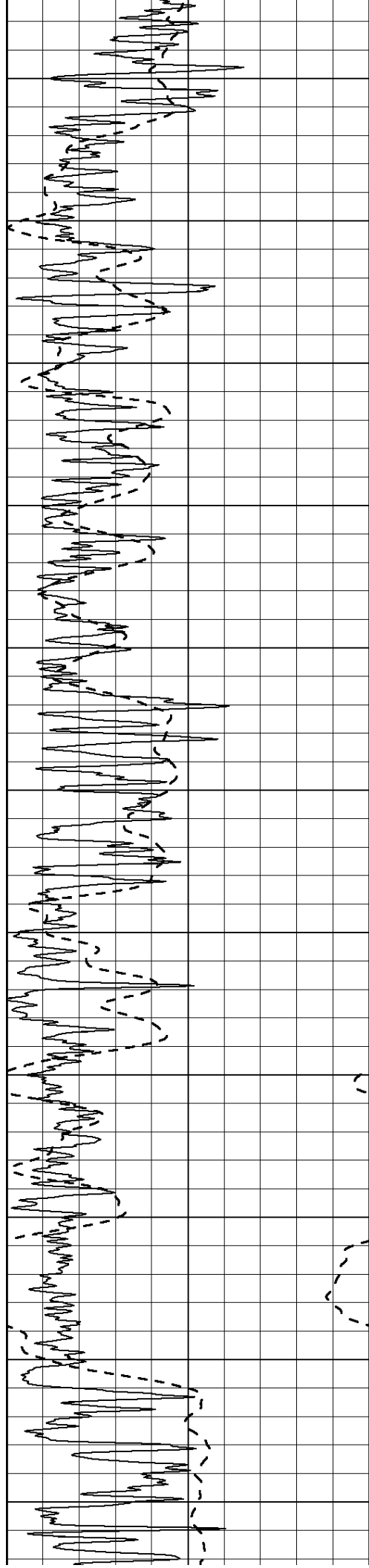


450
500
550
600
650
700
750
800
850
900
950

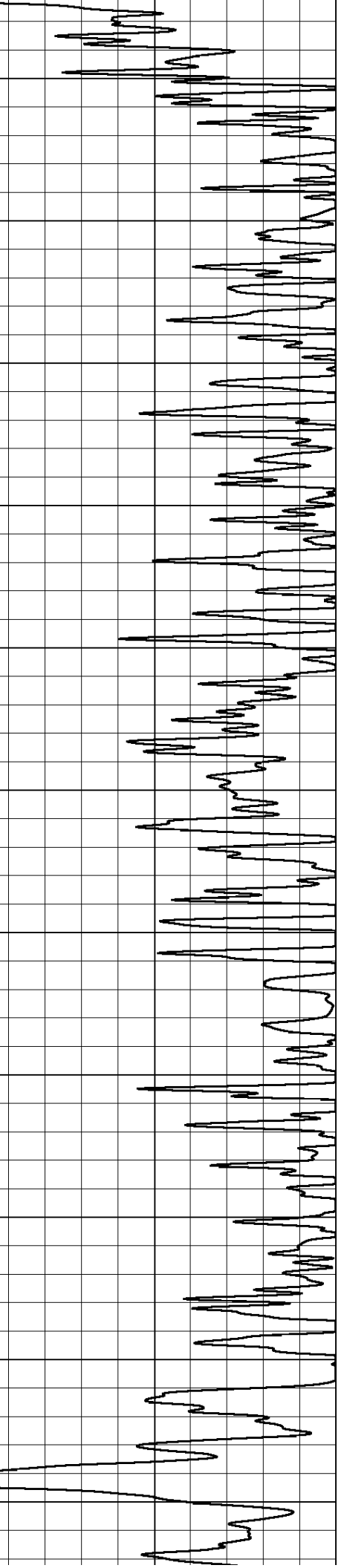
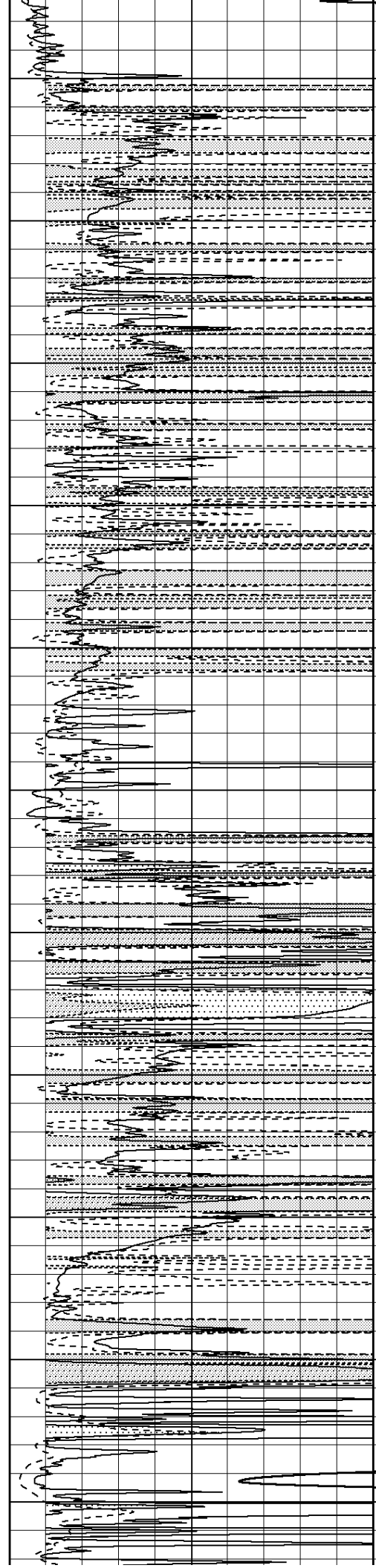


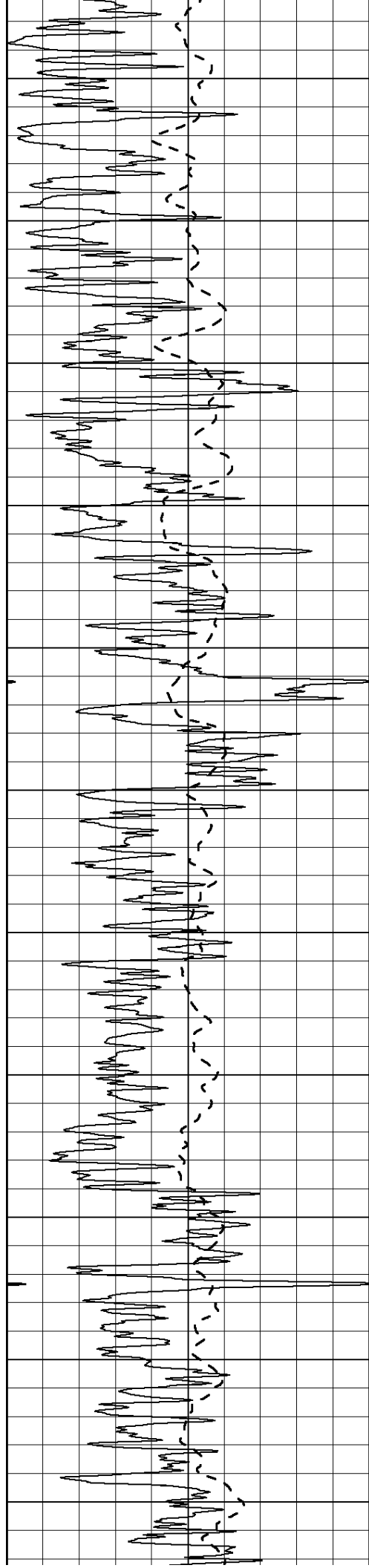






2100
2150
2200
2250
2300
2350
2400
2450
2500
2550
2600





2650

2700

2750

2800

2850

2900

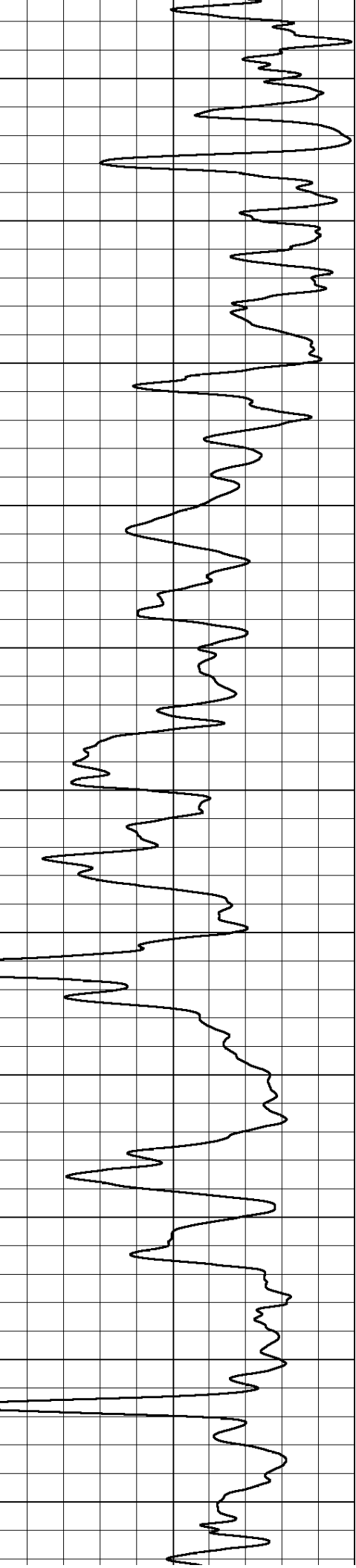
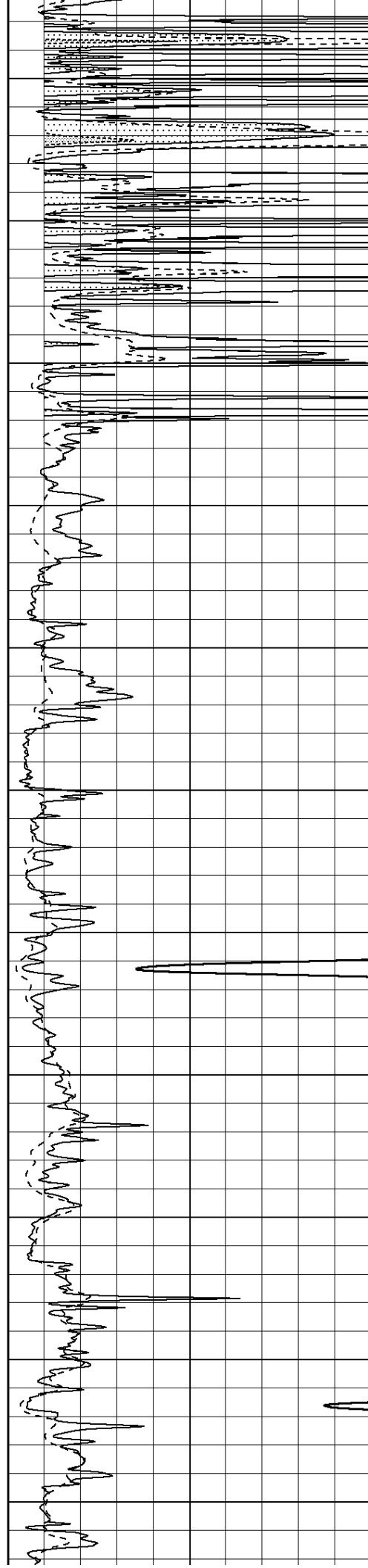
2950

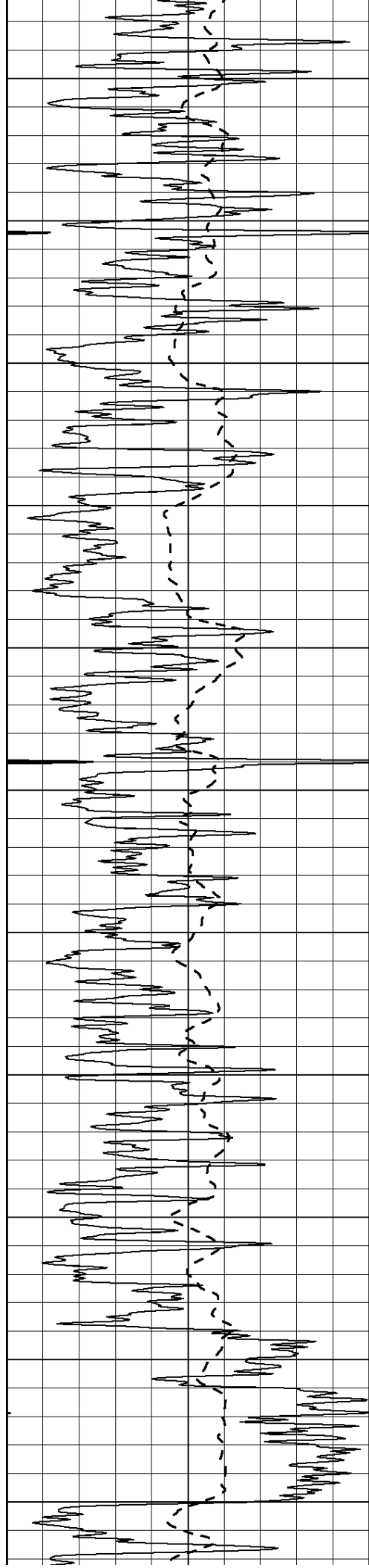
3000

3050

3100

3150





3200

3250

3300

3350

3400

3450

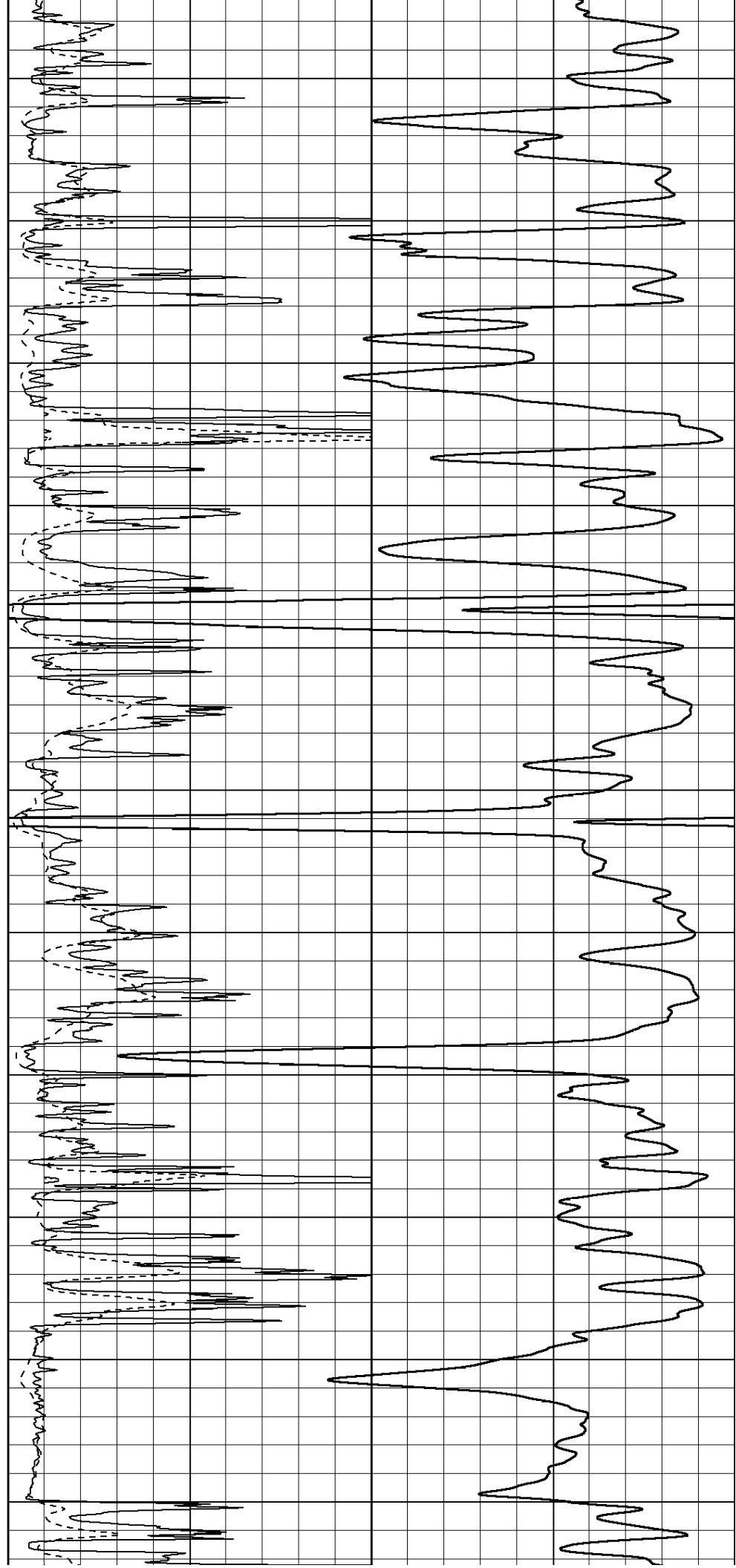
3500

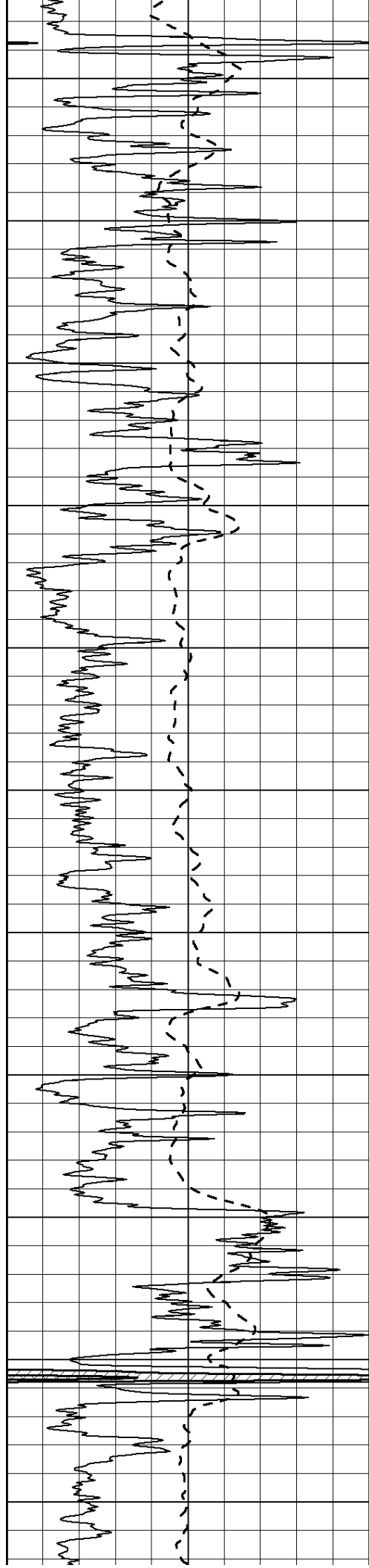
3550

3600

3650

3700





3750

3800

3850

3900

3950

4000

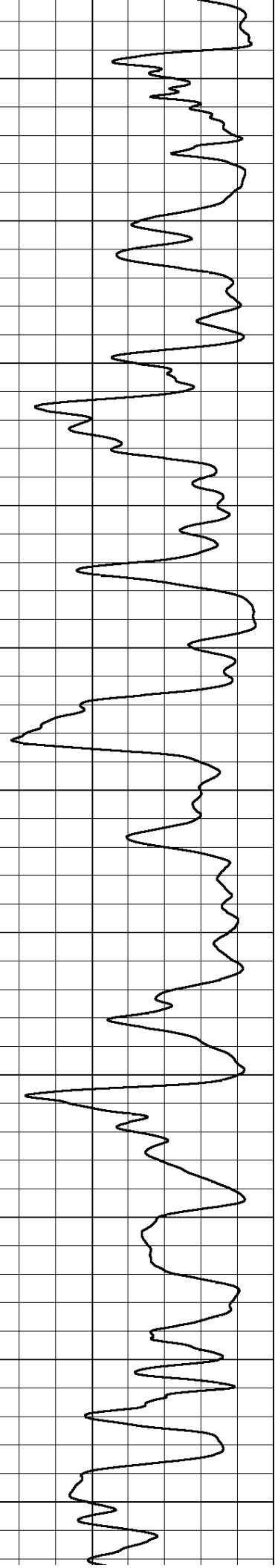
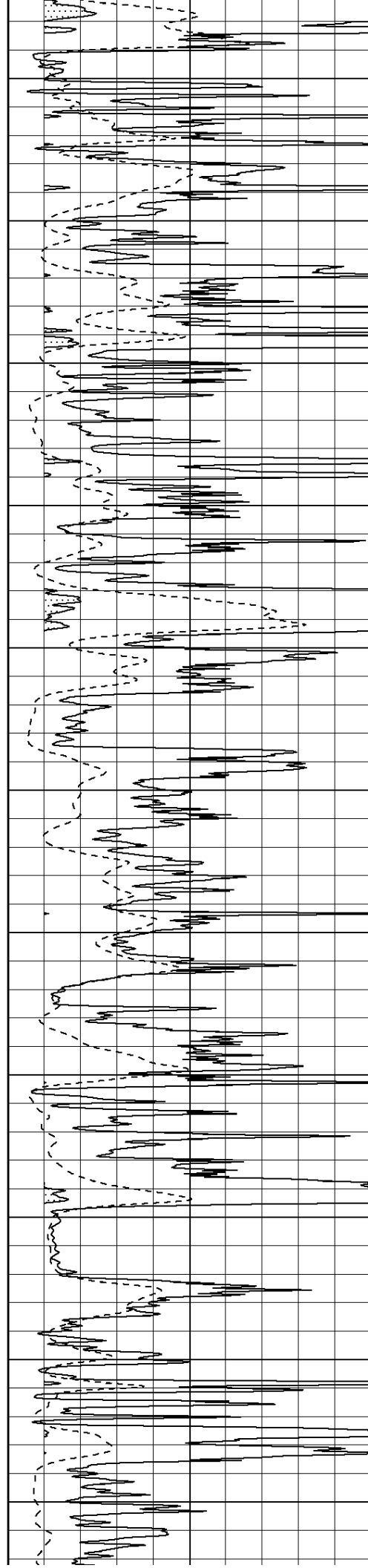
4050

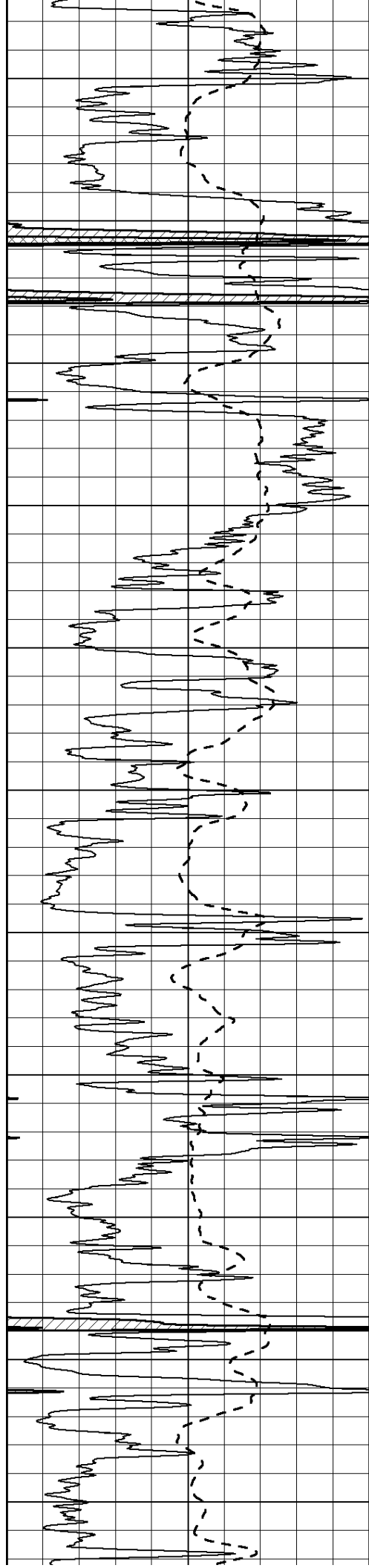
4100

4150

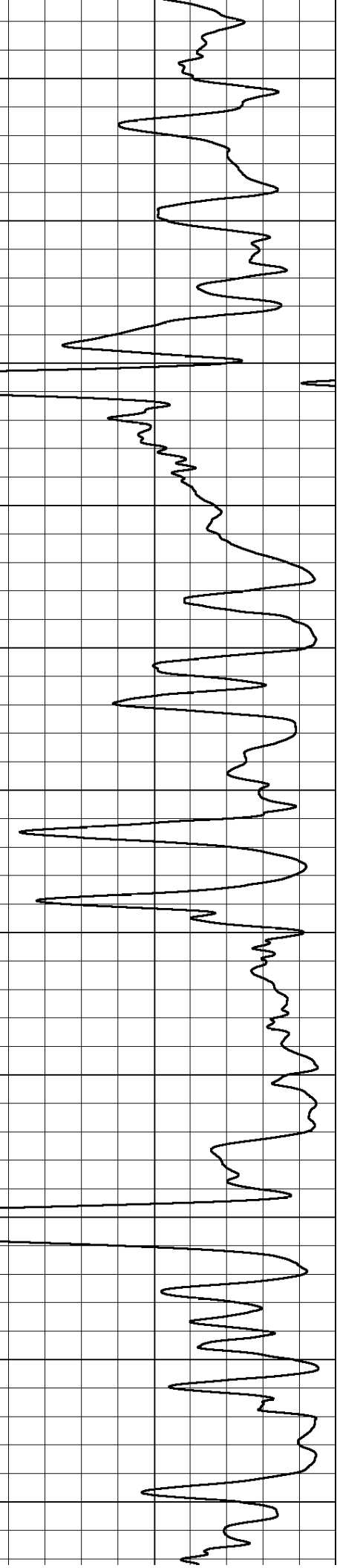
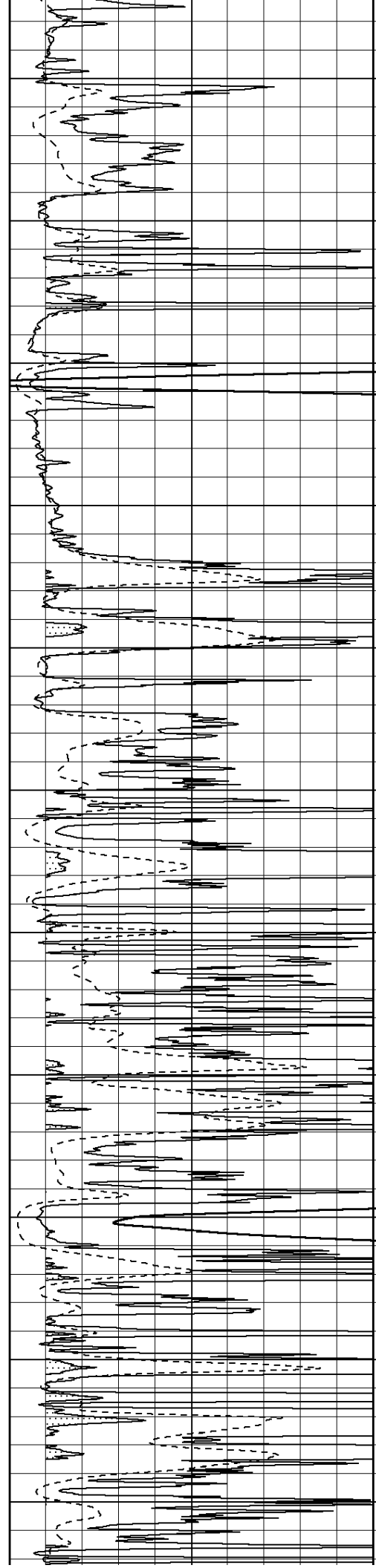
4200

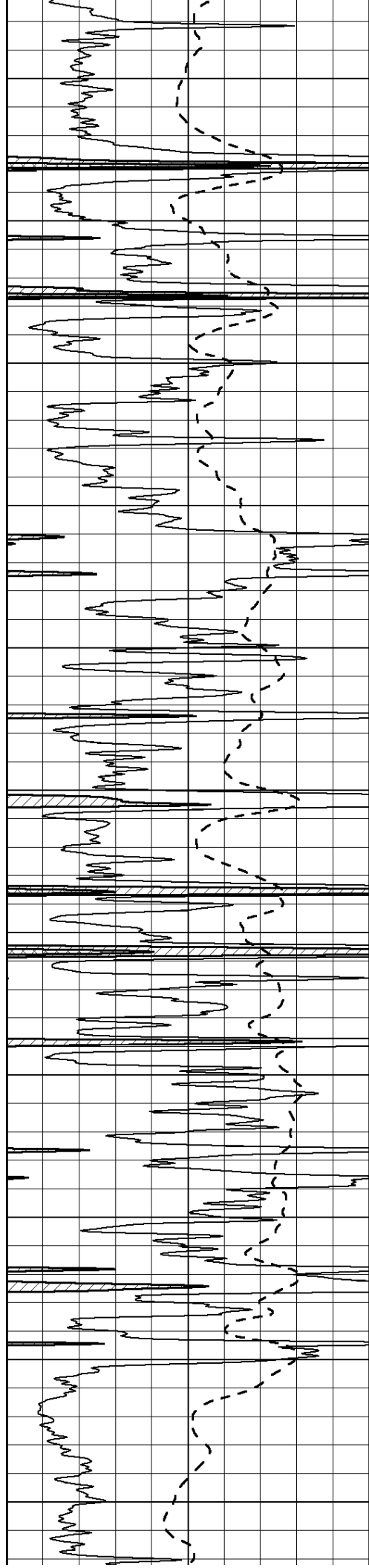
4250





4300
4350
4400
4450
4500
4550
4600
4650
4700
4750
4800





4850

4900

4950

5000

5050

5100

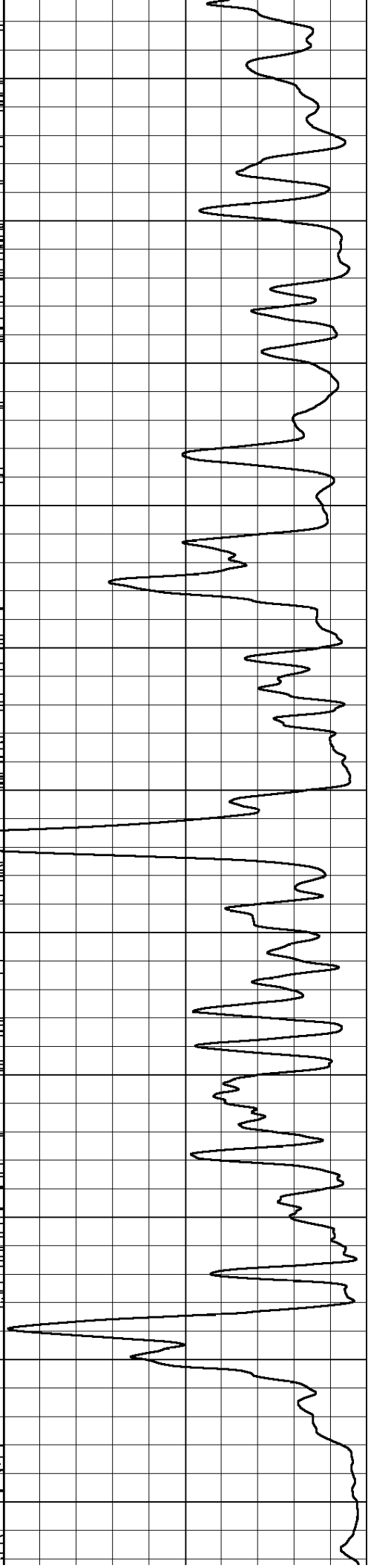
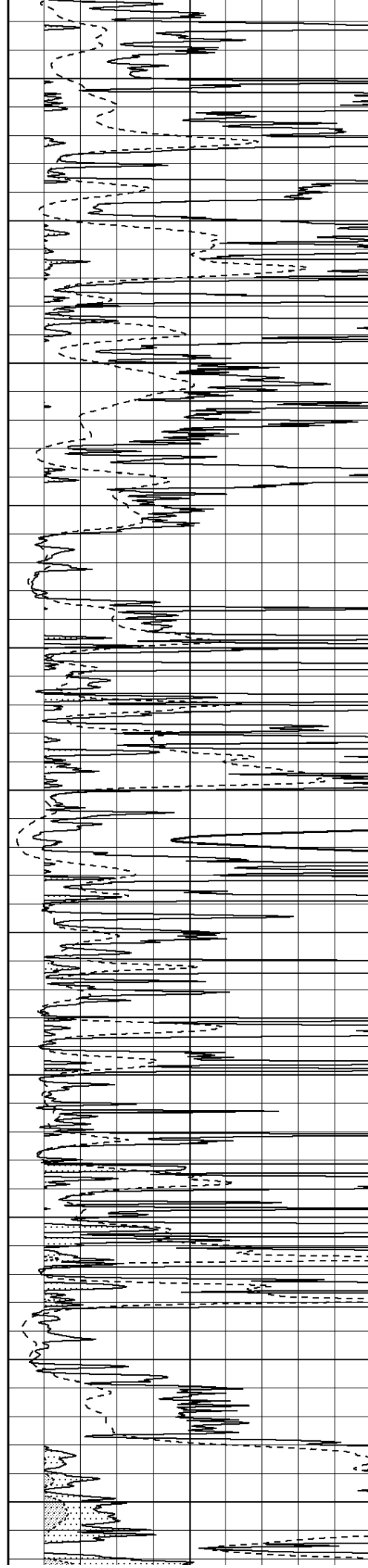
5150

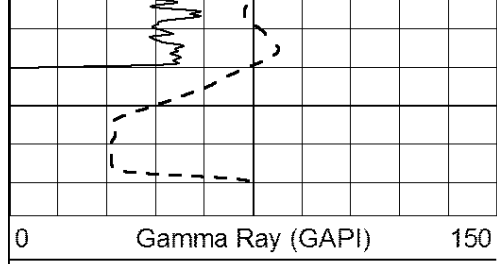
5200

5250

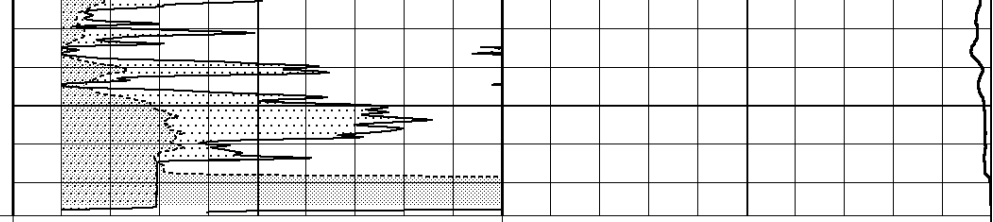
5300

5350





5400



0 RLL3 (Ohm-m) 50

0 Deep Induction (Ohm-m) 50

1000 CILD (mmho/m) 0

50 RILD X10 (Ohm-m) 500

50 RLL3 X10 (Ohm-m) 500

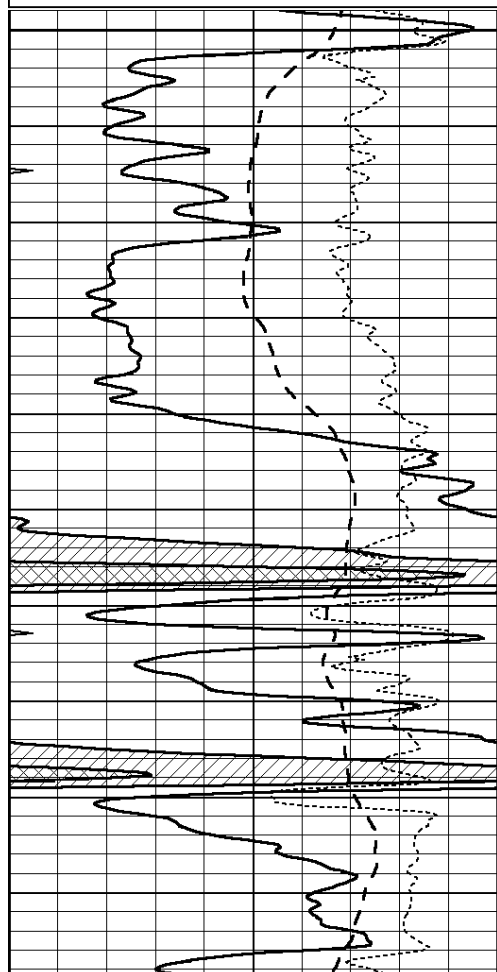


MAIN SECTION

Database File: 24706pe.db
 Dataset Pathname: pass4.1
 Presentation Format: _dil
 Dataset Creation: Tue Jul 15 21:08:13 2014 by Calc Open-Cased 090629
 Charted by: Depth in Feet scaled 1:240

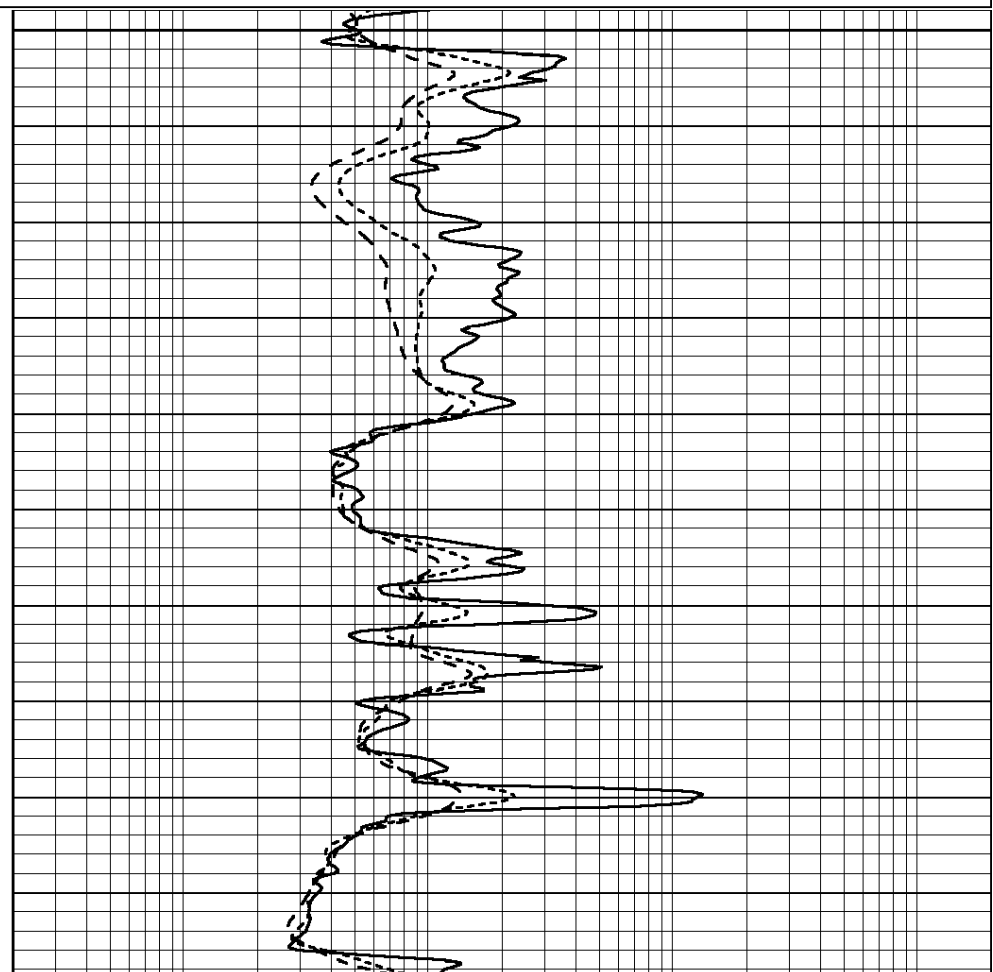
0	GAMMA RAY (GAPI)	150
-100	SP (mV)	100
-250	RxoRt	50
0	MINMK	20

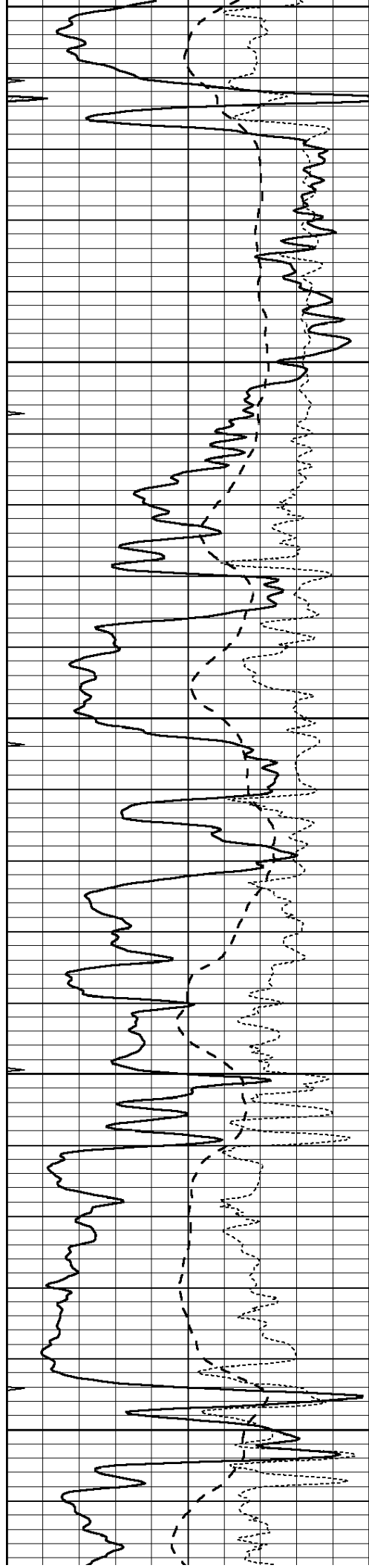
0.2	RLL3 (Ohm-m)	2000
0.2	DEEP INDUCTION (Ohm-m)	2000
0.2	MEDIUM INDUCTION (Ohm-m)	2000



4300

4350





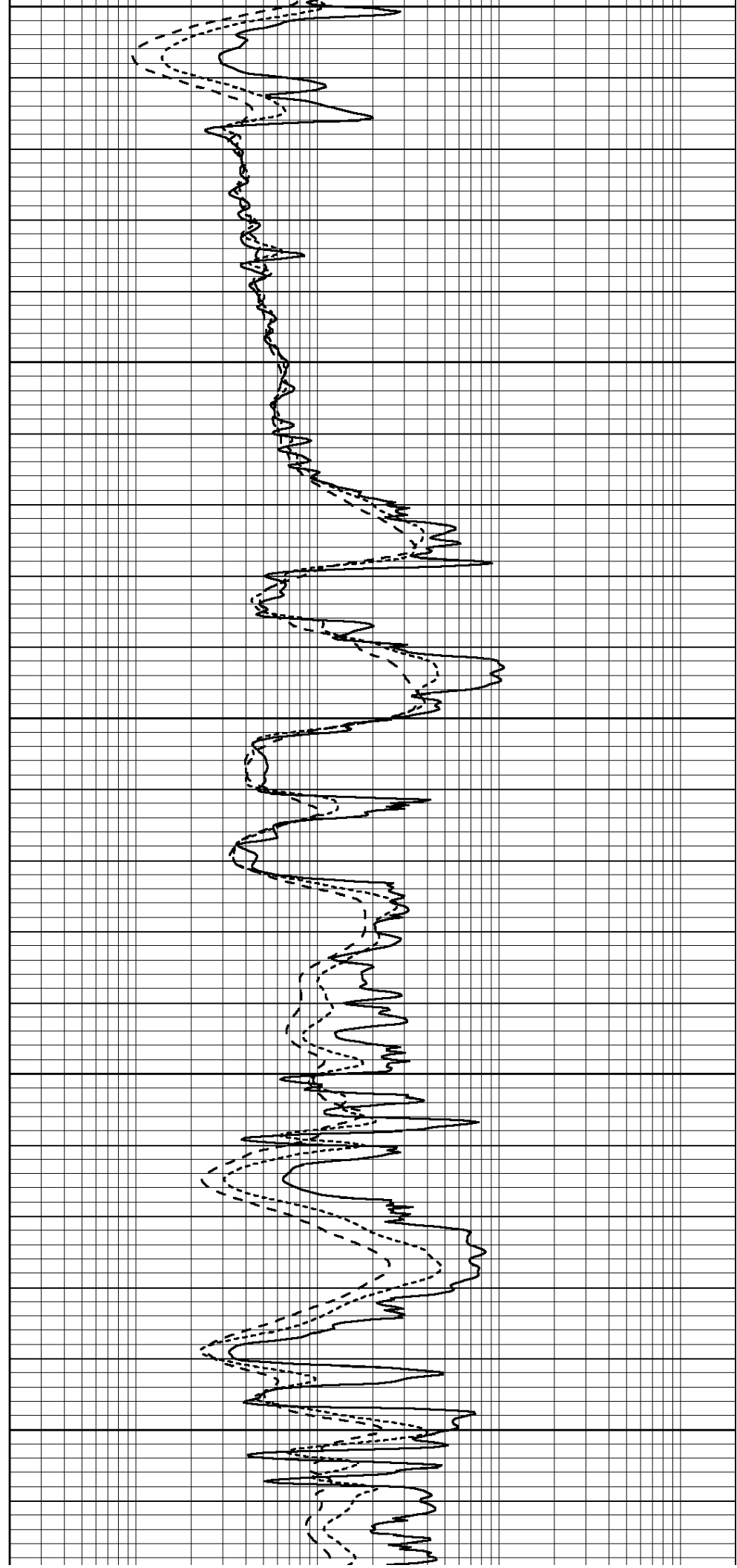
4400

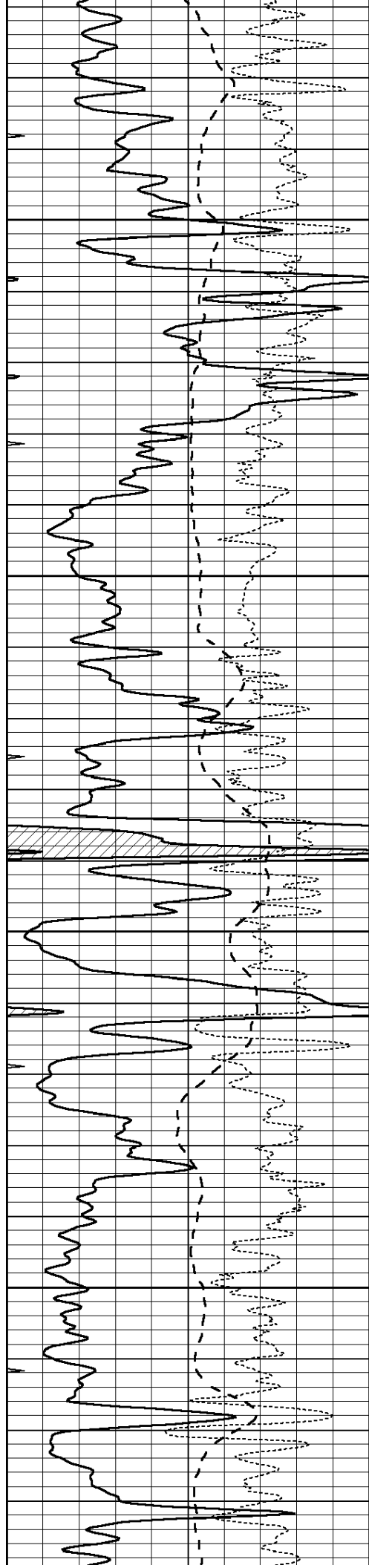
4450

4500

4550

4600



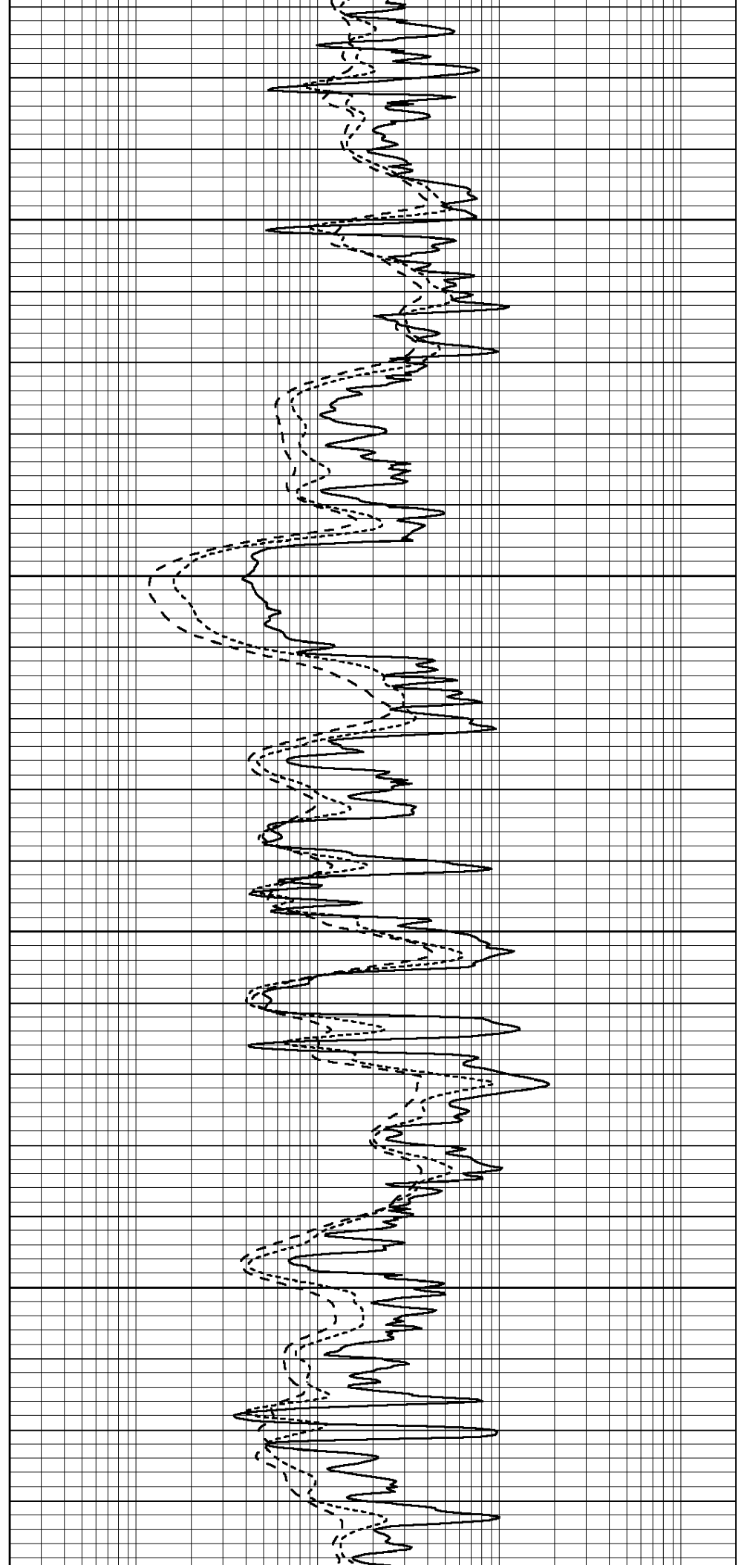


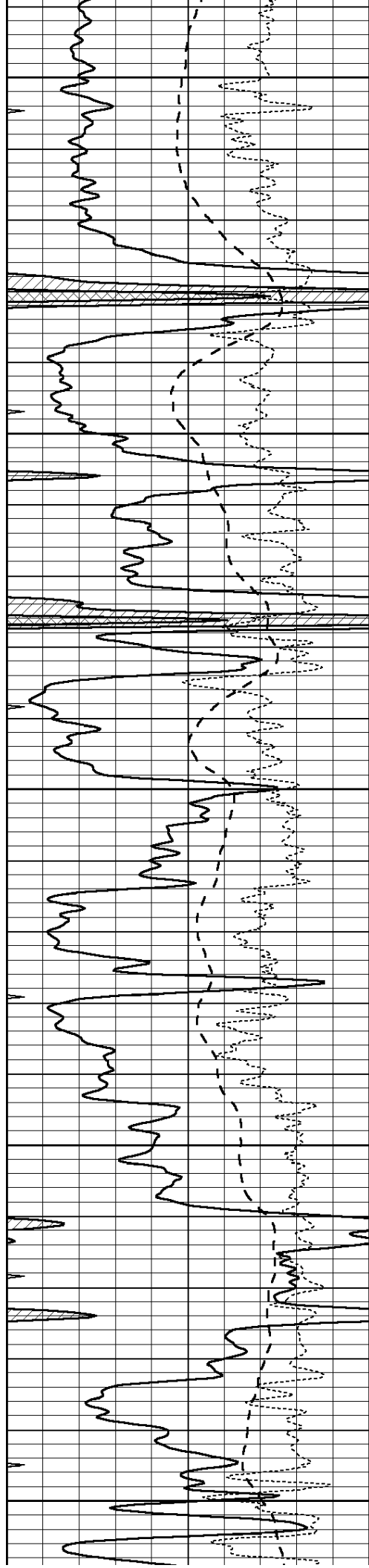
4650

4700

4750

4800





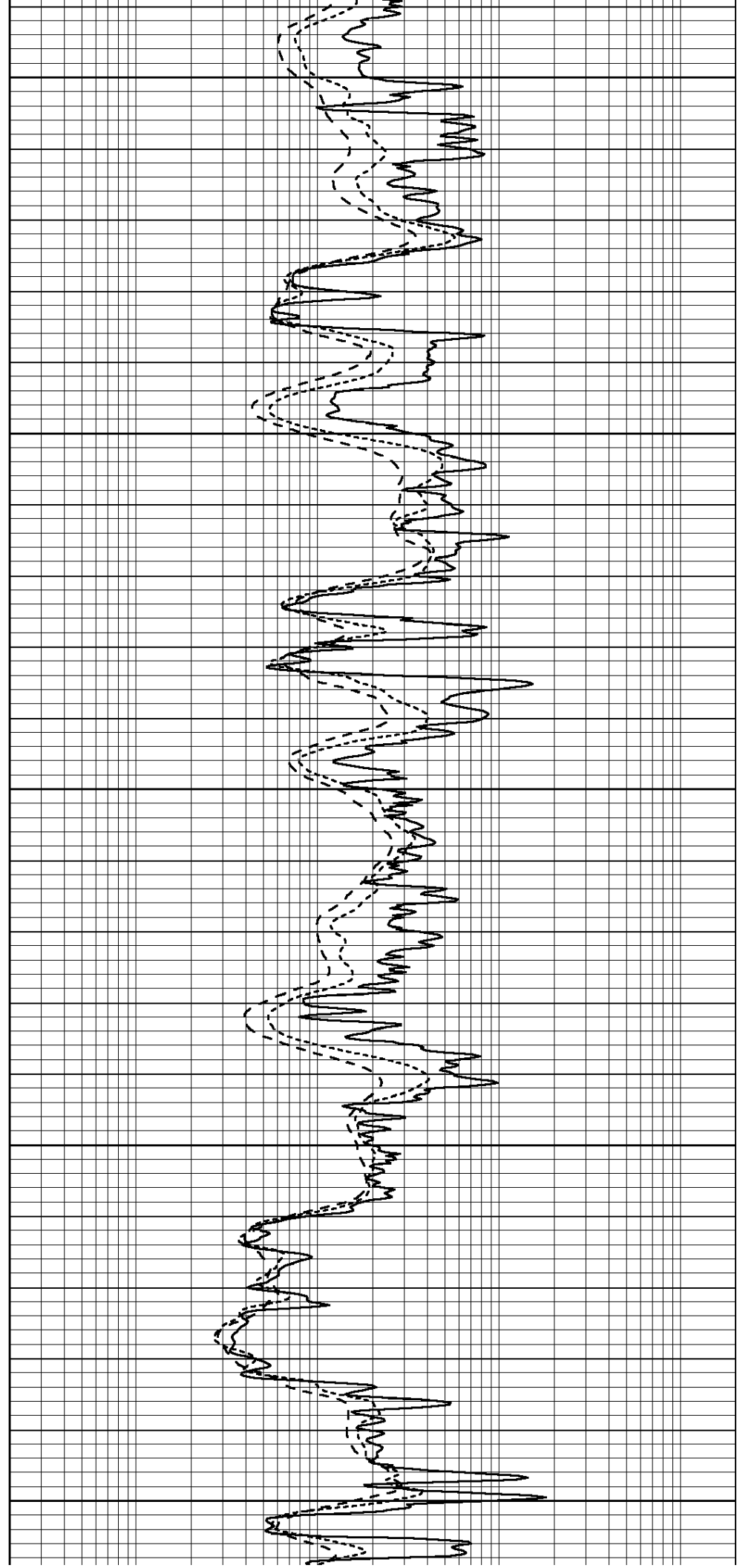
4850

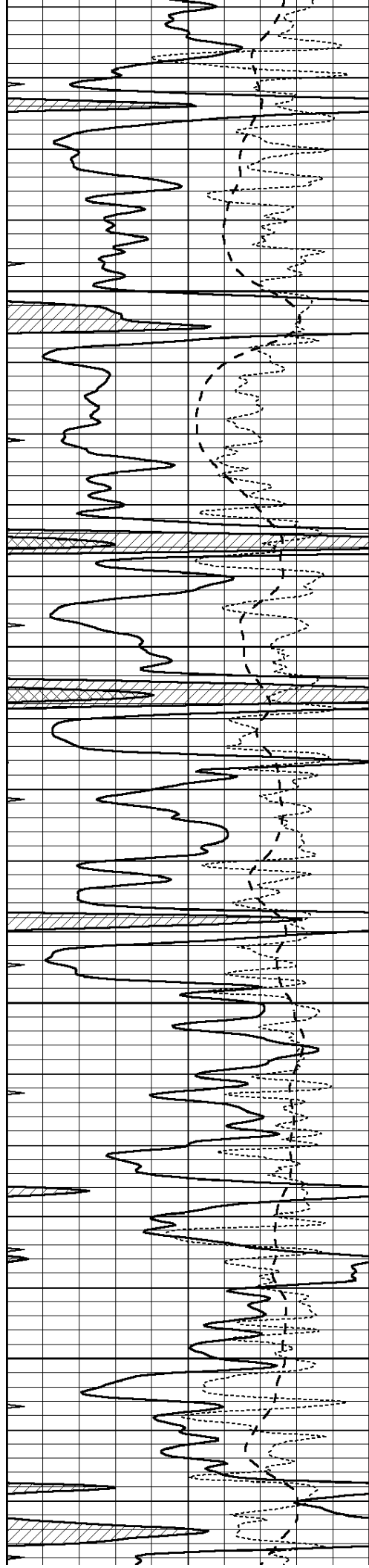
4900

4950

5000

5050



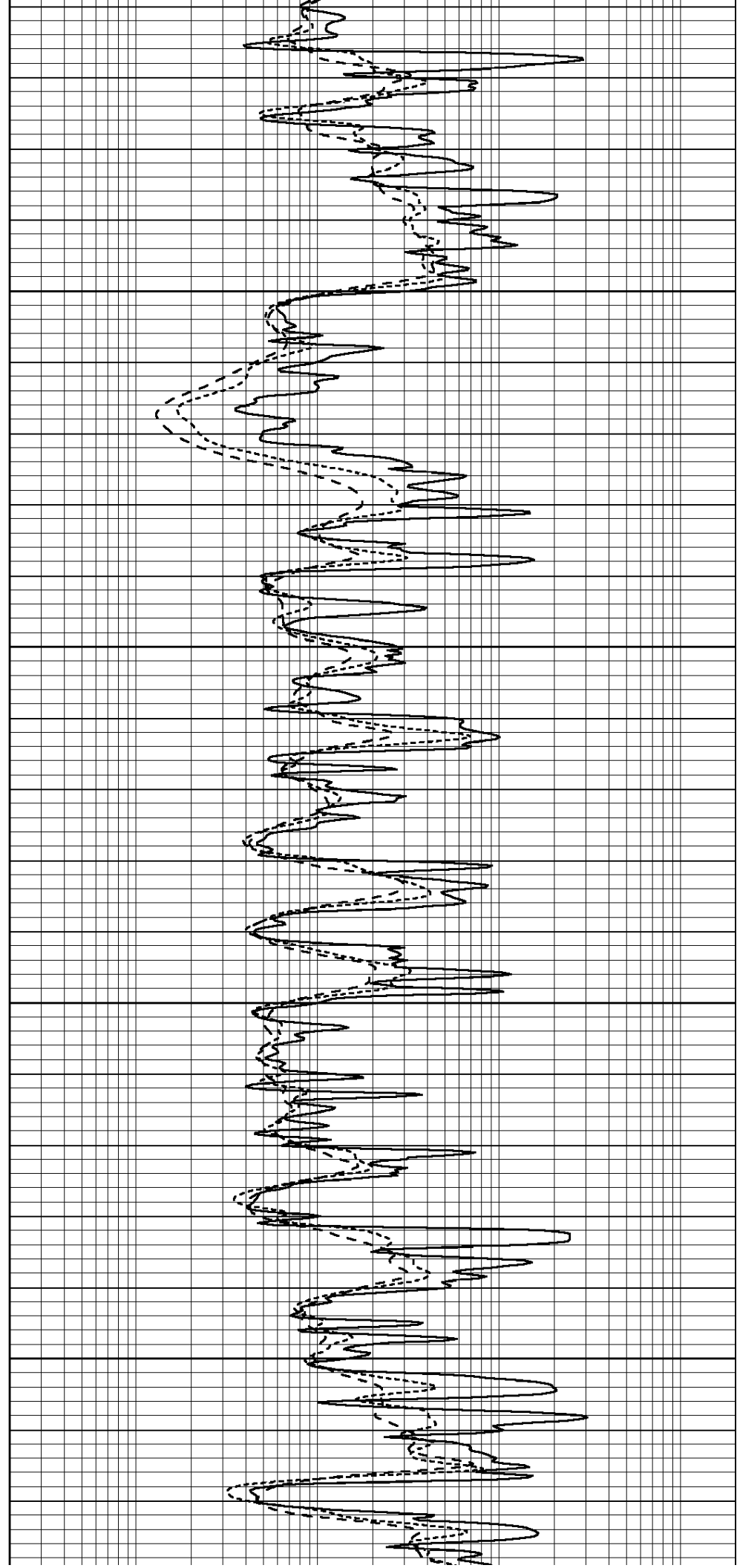


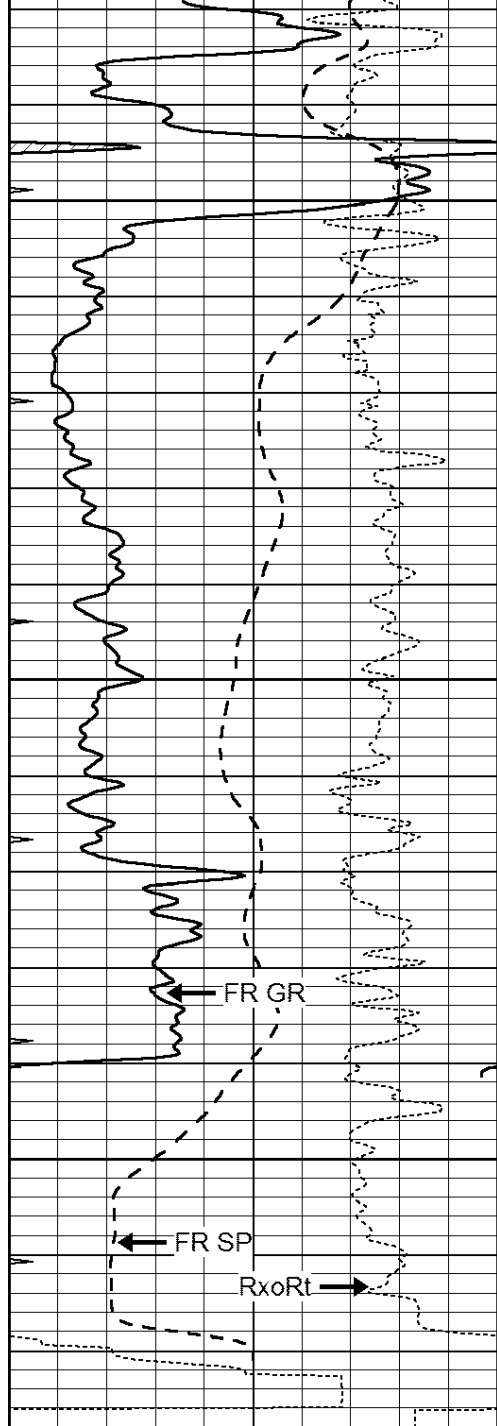
5100

5150

5200

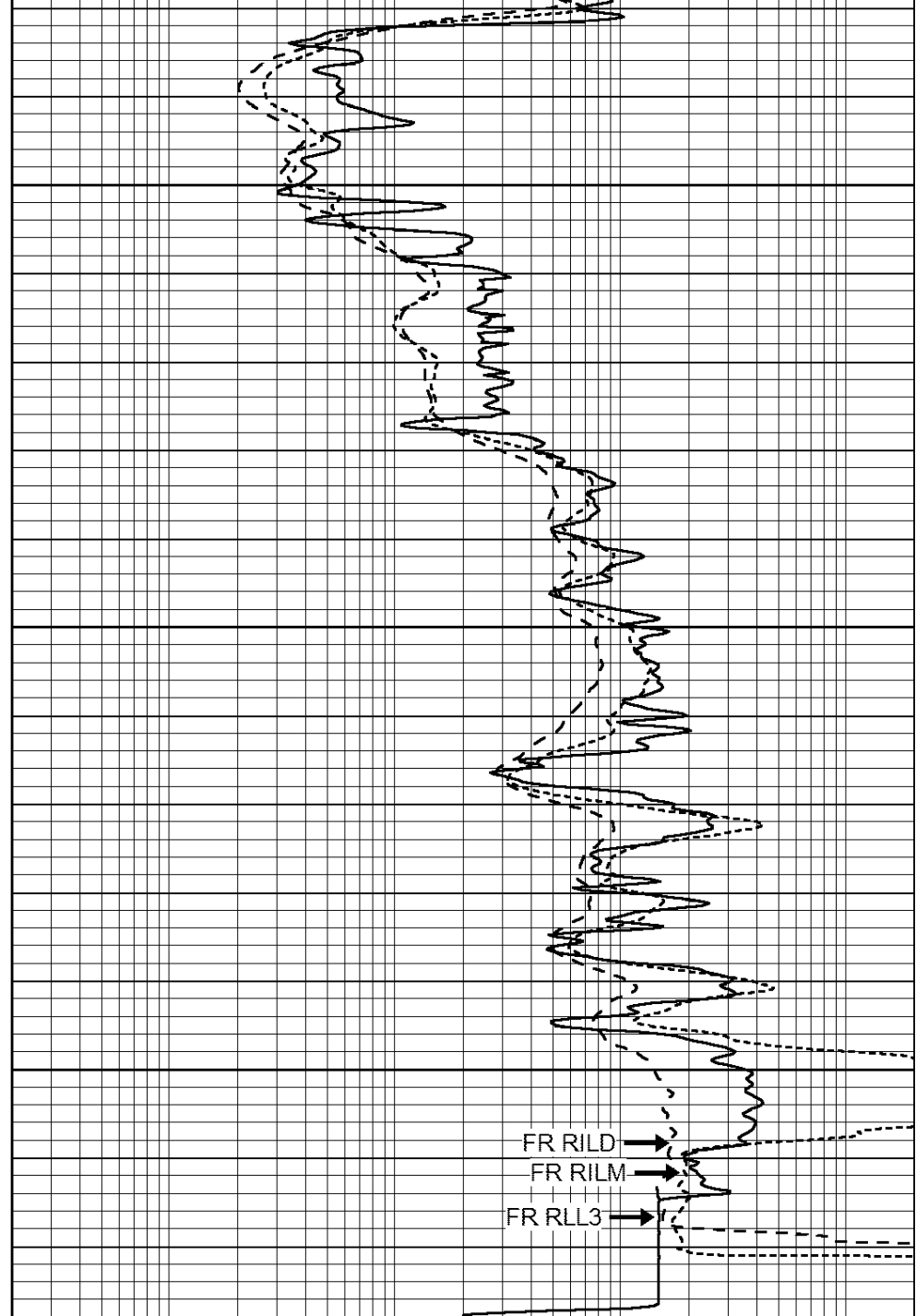
5250





5300
5350
5400
LTD 5419

0	GAMMA RAY (GAPI)	150
-100	SP (mV)	100
-250	RxoRt	50
0	MINMK	20



0.2	RLL3 (Ohm-m)	2000
0.2	DEEP INDUCTION (Ohm-m)	2000
0.2	MEDIUM INDUCTION (Ohm-m)	2000

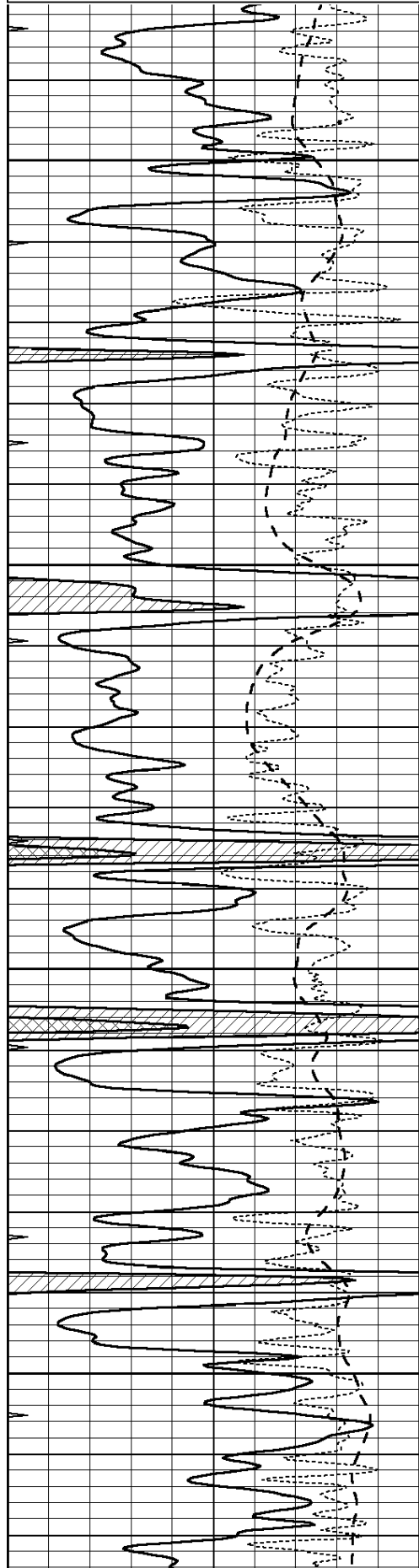


REPEAT SECTION

Database File: 24706pe.db
 Dataset Pathname: pass3.1
 Presentation Format: _dil
 Dataset Creation: Tue Jul 15 21:10:33 2014 by Calc Open-Cased 090629
 Charted by: Depth in Feet scaled 1:240

0	GAMMA RAY (GAPI)	150
-100	SP (mV)	100
-250	RxoRt	50
0	MINMK	20

0.2	RLL3 (Ohm-m)	2000
0.2	DEEP INDUCTION (Ohm-m)	2000
0.2	MEDIUM INDUCTION (Ohm-m)	2000

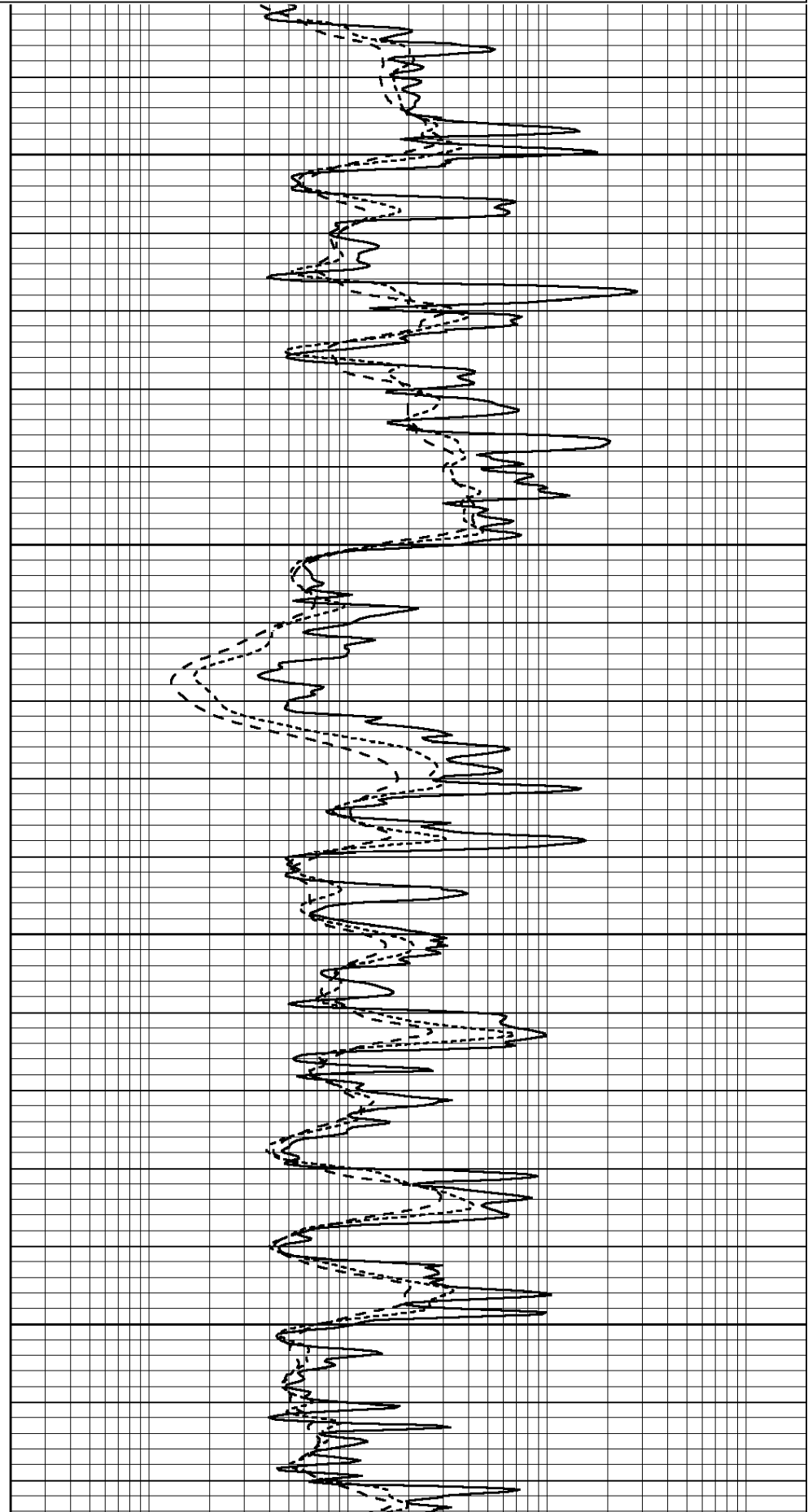


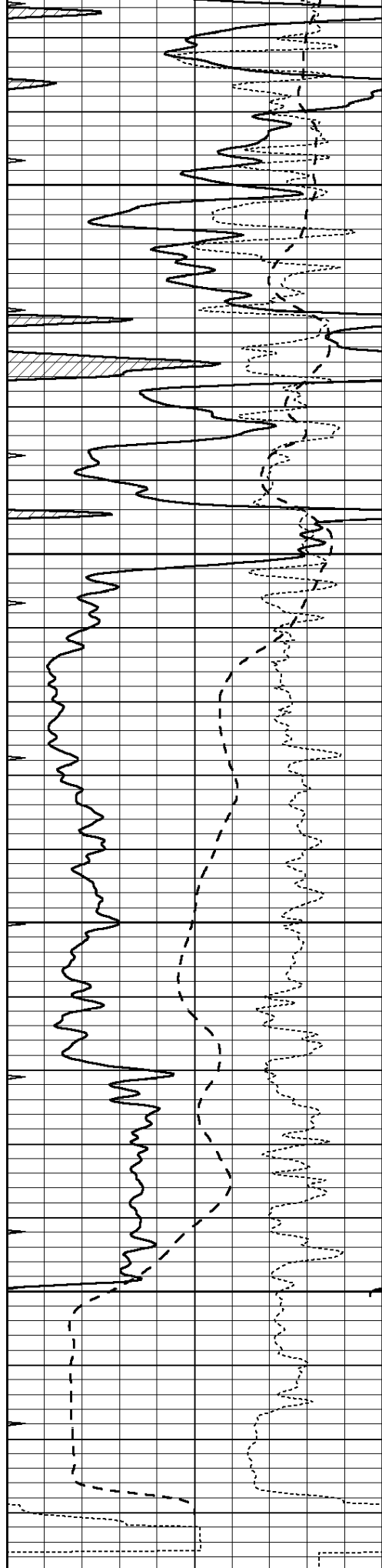
5050

5100

5150

5200





5250

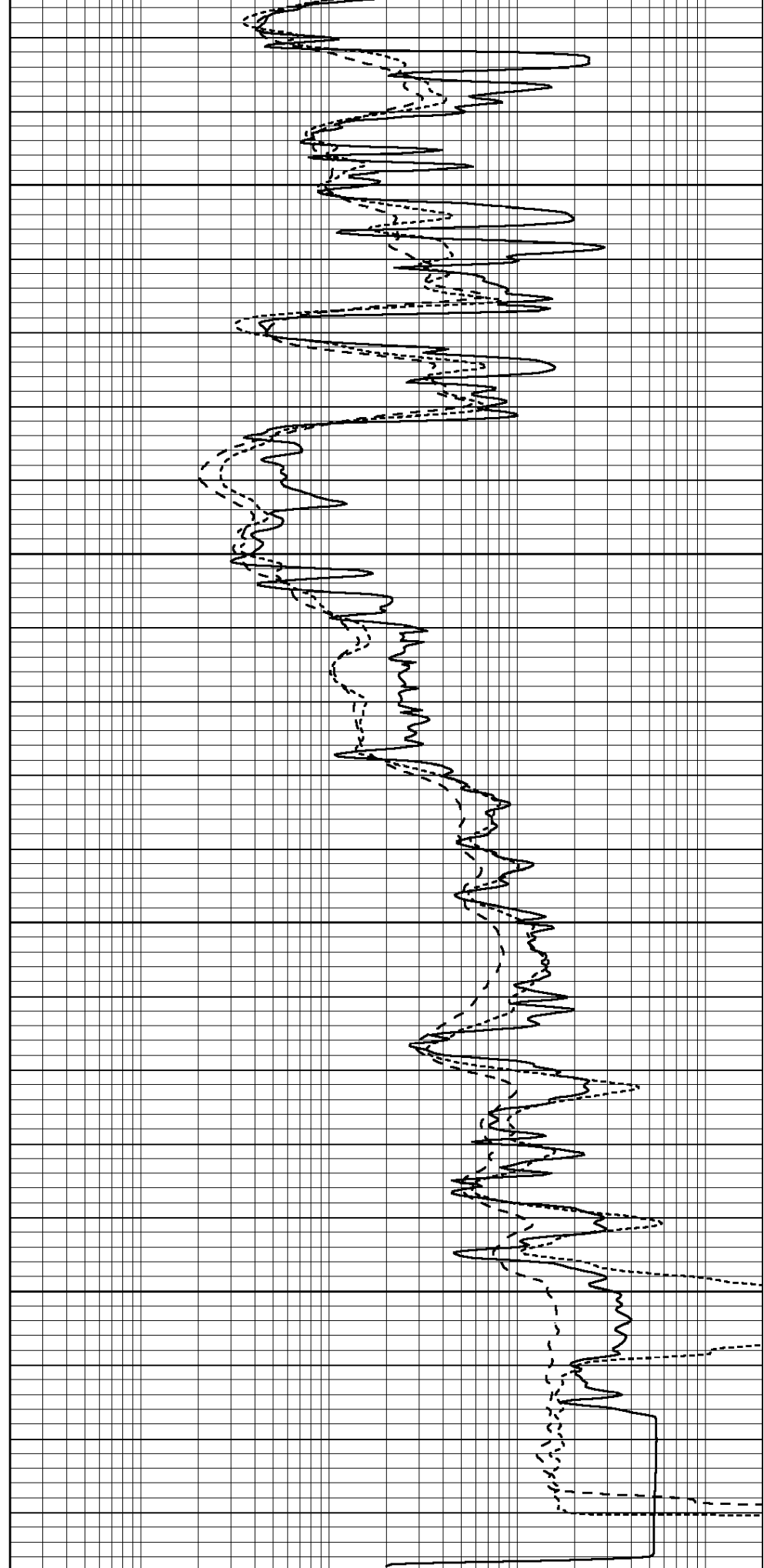
5300

5350

5400

0 GAMMA RAY (GAPI) 150

100 SP (mV) 100



0.2 RLL3 (Ohm-m) 2000

0.2 DEEP INDUCTION (Ohm-m) 2000

-100	SF (mV)	100
-250	RxoRt	50
0	MINMK	20

0.2	DEEP INDUCTION (Ohm-m)	2000
0.2	MEDIUM INDUCTION (Ohm-m)	2000

Calibration Report

Database File: 24706pe.db
 Dataset Pathname: pass3.1
 Dataset Creation: Tue Jul 15 21:10:33 2014 by Calc Open-Cased 090629

Dual Induction Calibration Report

Serial-Model: PROBE7-DILG
 Surface Cal Performed: Thu Aug 29 12:01:20 2013
 Downhole Cal Performed: Sat Jan 19 19:51:38 2013
 After Survey Verification Performed: Sat Jan 19 19:51:38 2013

Surface Calibration

Loop:	Readings				References		Results	
	Air	Loop			Air	Loop	m	b
Deep	0.793	0.790	V	0.000	400.000	mmho/m	500.000	20.000
Medium	0.992	1.002	V	0.000	464.000	mmho/m	520.000	-24.000
Internal:	Zero	Cal		Zero	Cal		m	b
Deep	0.041	0.642	V	0.000	400.000	mmho/m	664.874	-27.011
Medium	0.035	0.802	V	0.000	464.000	mmho/m	604.936	-21.367

Downhole Calibration

	Readings				References		Results	
	Zero	Cal			Zero	Cal	m'	b'
Deep	135384.000	27094.500	mmho/m	135400.000	27082.400	mmho/m	1.000	-19.259
Medium	-47330.100	-9381.740	mmho/m	-47327.100	-9389.280	mmho/m	1.000	-10.154
LL3		7.322	V		1400.000	Ohm-m		
		0.038	V		20.000	Ohm-m		
		-7.273	V		4000.000	mmho-m		

After Survey Verification

	Readings				Targets		Results	
	Zero	Cal			Zero	Cal	m'	b'
Deep	0.000	0.000	mmho/m	135384.000	27094.500	mmho/m	1.000	0.000
Medium	0.000	0.000	mmho/m	-47330.100	-9381.740	mmho/m	1.000	0.000
LL3		0.000	Ohm-m		1400.000	Ohm-m		
		0.000	Ohm-m		20.000	Ohm-m		
		0.000	mmho-m		4000.000	mmho-m		

Litho Density Calibration Report

Serial: 001 Model: PRB

Master Calibration

Performed Mon Jun 09 14:46:25 2014

	Background	Magnesium	Aluminum	Sandstone	
Window 1	1833.3	8239.1	3179.3	9365.4	cps
Window 2	1708.4	7189.1	2862.8	8058.6	cps
Window 3	1391.6	4030.0	1937.3	4384.2	cps
Window 4	414.3	417.6	417.2	416.2	cps
Long Space	0.0	5480.6	1154.3	6350.2	cps
Short Space	3.1	1831.8	1190.6	2030.8	cps
Rho		1.7100	2.5900	1.3800	g/cc
Pe		0.0000	2.5700	1.5500	

Rib Angle	: 44.5	Rib Slope	: 0.984	Density/Spine Ratio	: 0.544
Spine Angle	: 74.5	Spine Slope	: 3.615	Spine Intercept	: -18.6

Before Survey Verification

Performed Wed Dec 31 18:00:00 1969

Window 1	0.0	0.0	0.0	0.0	cps
Window 2	0.0	0.0	0.0	0.0	cps
Window 3	0.0	0.0	0.0	0.0	cps
Window 4	0.0	0.0	0.0	0.0	cps
Long Space	0.0	0.0	0.0	0.0	cps
Short Space	0.0	0.0	0.0	0.0	cps
Measured Rho		0.0000	0.0000	0.0000	g/cc
Measured Correction		0.0000	0.0000	0.0000	g/cc
Measured Pe			0.0000	0.0000	

After Survey Verification

Performed Wed Dec 31 18:00:00 1969

Window 1	0.0	0.0	0.0	0.0	cps
Window 2	0.0	0.0	0.0	0.0	cps
Window 3	0.0	0.0	0.0	0.0	cps
Window 4	0.0	0.0	0.0	0.0	cps
Long Space	0.0	0.0	0.0	0.0	cps
Short Space	0.0	0.0	0.0	0.0	cps
Measured Rho		0.0000	0.0000	0.0000	g/cc
Measured Correction		0.0000	0.0000	0.0000	g/cc
Measured Pe			0.0000	0.0000	

Compensated Neutron Calibration Report

Serial Number: 080621
 Tool Model: Probe

PRE-SURVEY VERIFICATION

Detector	Readings	Measured	Target
Short Space	cps		
Long Space	cps	pu	pu

POST-SURVEY VERIFICATION

Detector	Readings	Measured	Target
Short Space	cps		
Long Space	cps	pu	pu

Gamma Ray Calibration Report

Serial Number: 080328
 Tool Model: Probe1
 Performed: Sat Nov 19 09:15:32 2011

Calibrator Value: 1.0 GAPI

Background Reading: 0.0 cps
 Calibrator Reading: 1.0 cps

Sensitivity: 0.6500 GAPI/cps