



Pioneer Energy Services

Dual Compensated Porosity Log

API No.	15-151-22,438-00-00		
Company	Prater Oil & Gas Operations, Inc.		
Well	VerDon #1		
Field	Atsfer		
County	Pratt		
State	Kansas		
Location	NE NW SW SE 1000' FSL & 2240' FEL		
Sec: 15	Twp: 29S	Rge: 15W	Other Services DIL
Permanent Datum	Ground Level	Elevation 1952	Elevation
Log Measured From	Kelly Bushing	9 Ft. Above Perm. Datum	K.B. 1961
Drilling Measured From	Kelly Bushing		D.F. G.L. 1952

Date	10/7/2014
Run Number	One
Type Log	CNL / CDL
Depth Driller	4815
Depth Logger	4815
Bottom Logged Interval	4794
Top Logged Interval	3700
Type Fluid In Hole	Chemical
Salinity, PPM CL	8000
Density	9.2
Level	Full
Max. Rec. Temp. F	124
Operating Rig Time	2 Hours
Equipment -- Location	15 Hays
Recorded By	D.Kerr
Witnessed By	Scott Alberg

Borehole Record		Casing Record					
Run No	Bit From	To	Size	Wgt.	From	To	
One	12.25	00	258	8.625	23#	00	258
Two	7.875	258					

<<< Fold Here >>>

All interpretations are opinions based on inferences from electrical or other measurements and we cannot and do not guarantee the accuracy or correctness of any interpretation, and we shall not, except in the case of gross or willful negligence on our part, be liable or responsible for any loss, costs, damages, or expenses incurred or sustained by anyone resulting from any interpretation made by any of our officers, agents or employees. These interpretations are also subject to our general terms and conditions set out in our current Price Schedule.

Comments

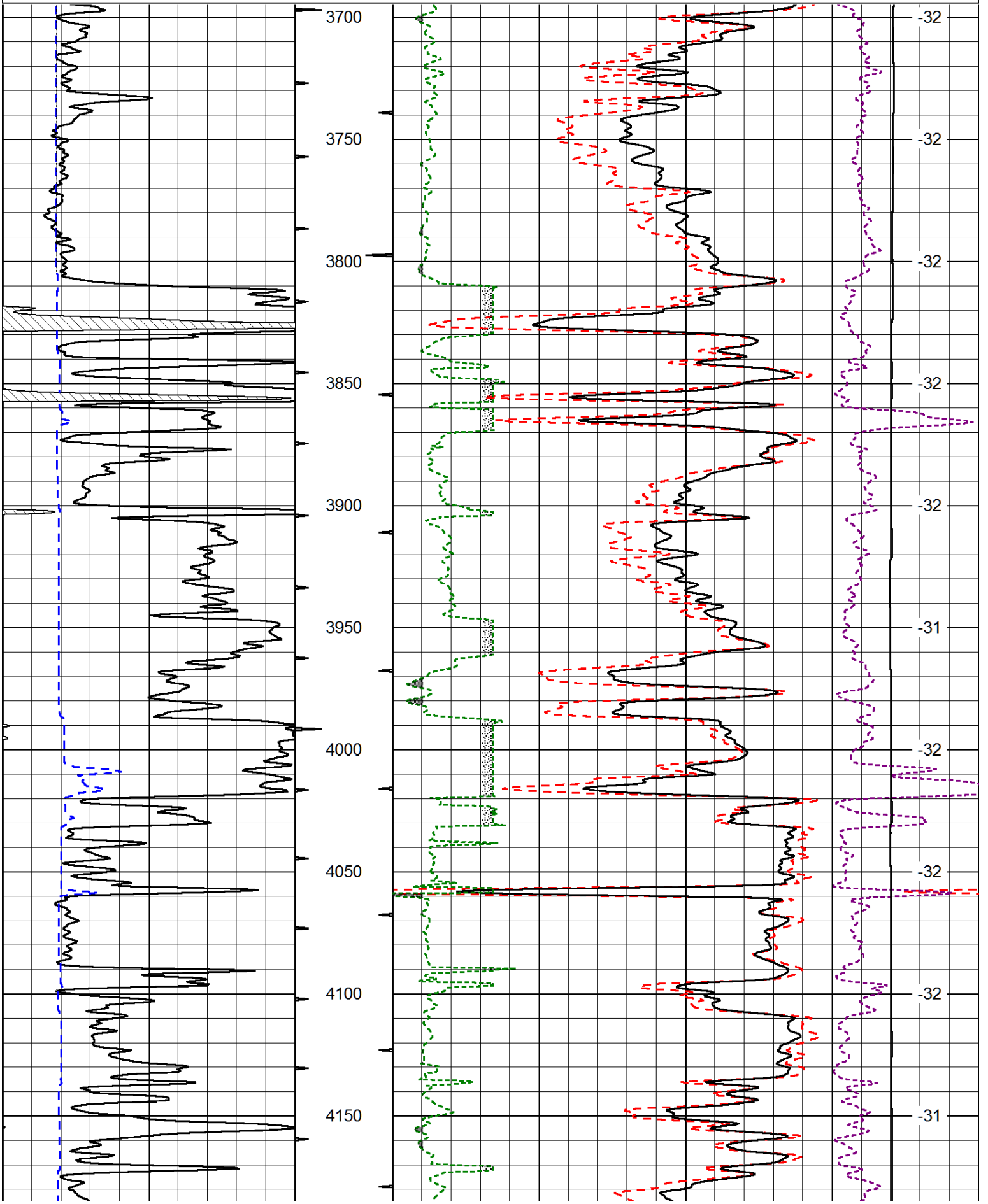
Thank you for using Log-Tech, Inc.
(785) 625-3858

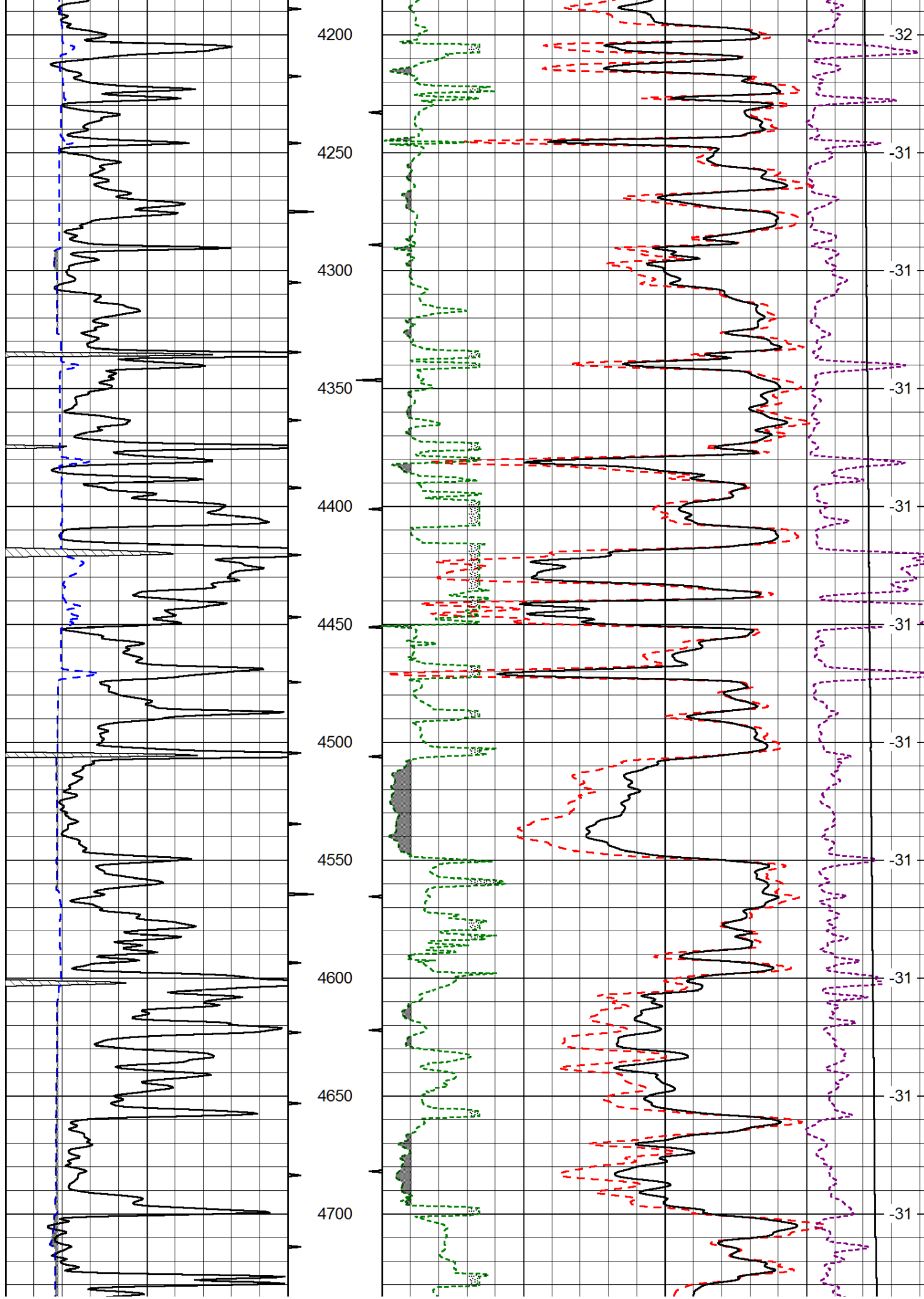
Coats KS, 6 1/4 West, North Into
Keep Left at Y

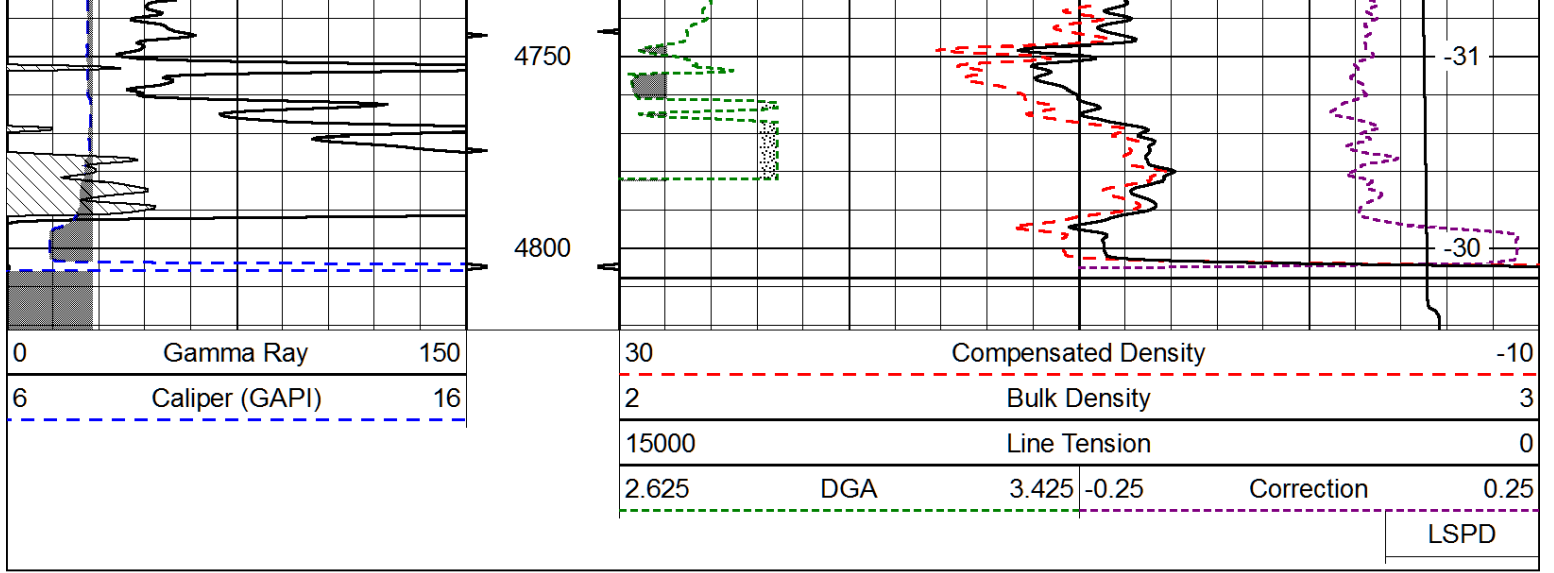
Database File: prater_verdon_1hd.db
 Dataset Pathname: DIL/pratstk
 Presentation Format: cdl
 Dataset Creation: Tue Oct 07 10:25:47 2014
 Charted by: Depth in Feet scaled 1:600

0	Gamma Ray	150
6	Caliper (GAPI)	16

30	Compensated Density		-10
2	Bulk Density		3
15000	Line Tension		0
2.625	DGA	3.425	-0.25
Correction			0.25
LSPD			







Database File: prater_verdon_1hd.db
 Dataset Pathname: DIL/pratstk
 Presentation Format: cndlspec
 Dataset Creation: Tue Oct 07 10:25:47 2014
 Charted by: Depth in Feet scaled 1:240

