



Pioneer Energy Services

Dual Induction Log

API No.	15-151-22,438-00-00	
Company	Prater Oil & Gas Operations, Inc.	
Well	VerDon #1	
Field	Atsfer	
County	Pratt	State
Location	NE NW SW SE 1000' FSL & 2240' FEL	
	Sec: 15	Twp: 29S Rge: 15W
Other Services	CNL/CDL	

Permanent Datum	Ground Level	Elevation 1952
Log Measured From	Kelly Bushing	9 Ft. Above Perm. Datum
Drilling Measured From	Kelly Bushing	
Date	10/7/2014	
Run Number	One	
Depth Driller	4815	
Depth Logger	4815	
Bottom Logged Interval	4814	
Top Log Interval	250	
Casing Driller	8.625 @ 258	
Casing Logger	258	
Bit Size	7.875	
Type Fluid in Hole	Chemical	
Salinity, ppm CL	8000	
Density / Viscosity	9.2	94
pH / Fluid Loss	9.0	12.4
Source of Sample	Flowline	
Rm @ Meas. Temp	0.70 @ 62	
Rmf @ Meas. Temp	0.53 @ 62	
Rmc @ Meas. Temp	0.95 @ 62	
Source of Rmf / Rmc	Charts	
Rm @ BHT	0.35 @ 124	
Operating Rig Time	2 Hours	
Max Rec. Temp. F	124	
Equipment Number	15	
Location	Hays	
Recorded By	D.Kerr	
Witnessed By	Scott Alberg	

<<< Fold Here >>>

All interpretations are opinions based on inferences from electrical or other measurements and we cannot and do not guarantee the accuracy or correctness of any interpretation, and we shall not, except in the case of gross or willful negligence on our part, be liable or responsible for any loss, costs, damages, or expenses incurred or sustained by anyone resulting from any interpretation made by any of our officers, agents or employees. These interpretations are also subject to our general terms and conditions set out in our current Price Schedule.

Comments

Thank you for using Log-Tech, Inc.
(785) 625-3858

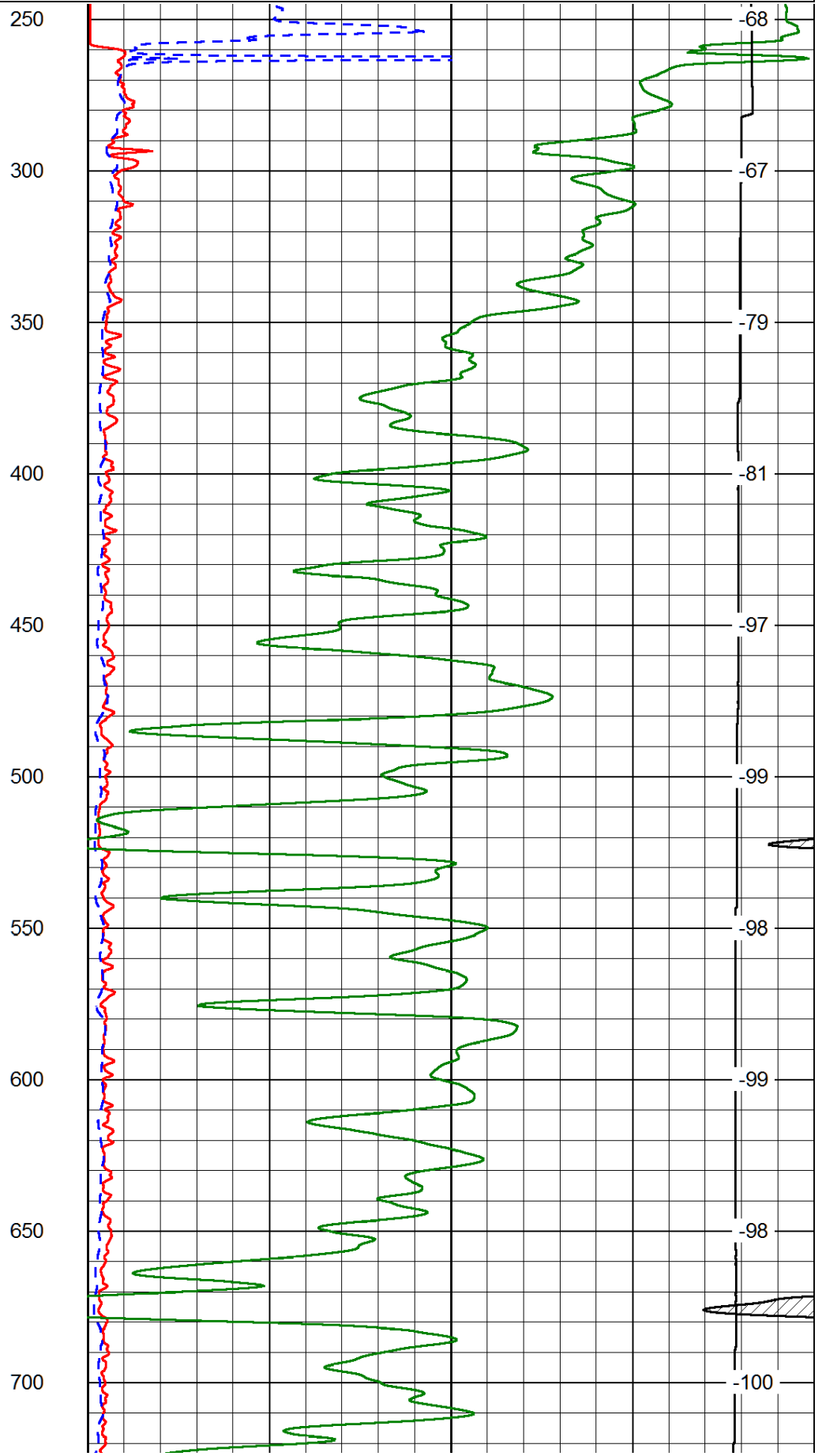
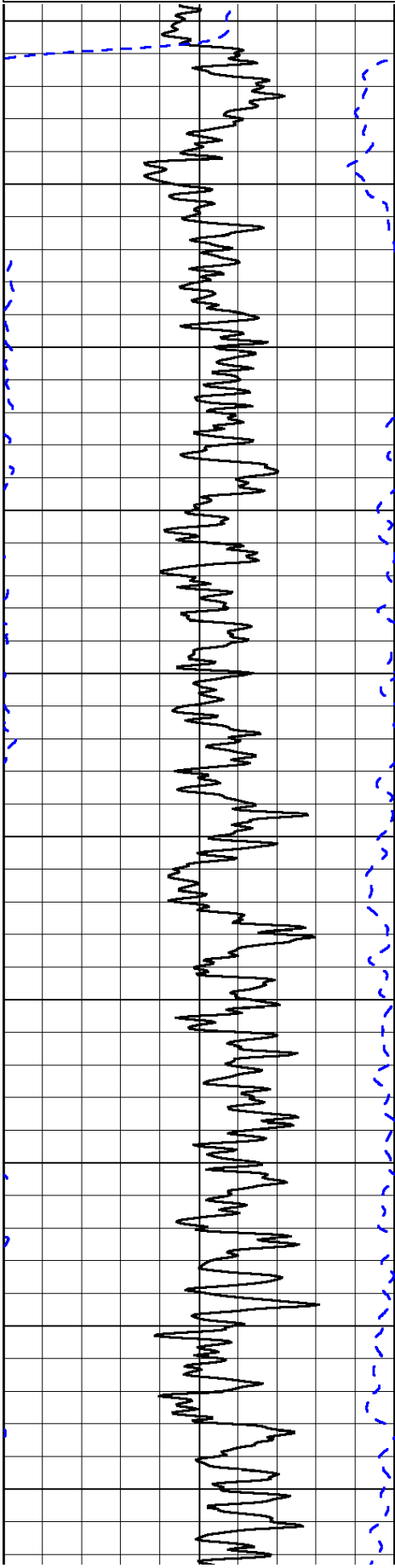
Coats KS, 6 1/4 West, North Into
Keep Left at Y

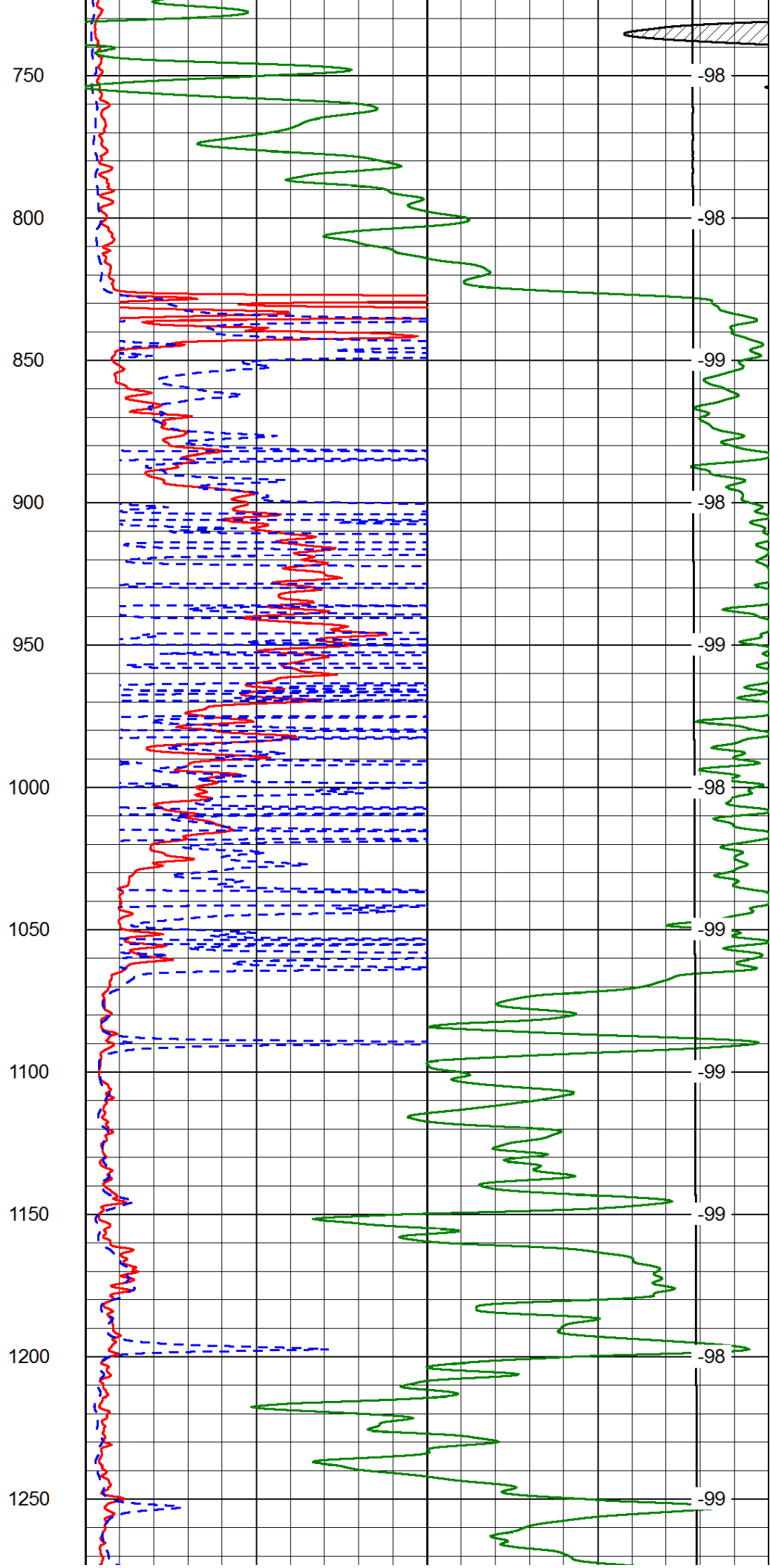
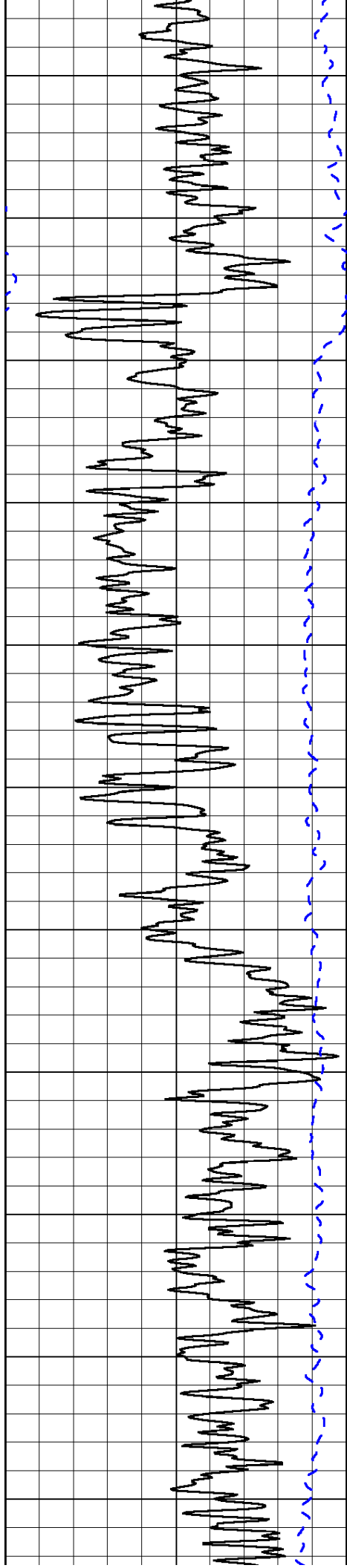
Database File: prater_verdon_1hd.db
 Dataset Pathname: DIL/pratstk
 Presentation Format: dil2in
 Dataset Creation: Tue Oct 07 10:25:47 2014
 Charted by: Depth in Feet scaled 1:600

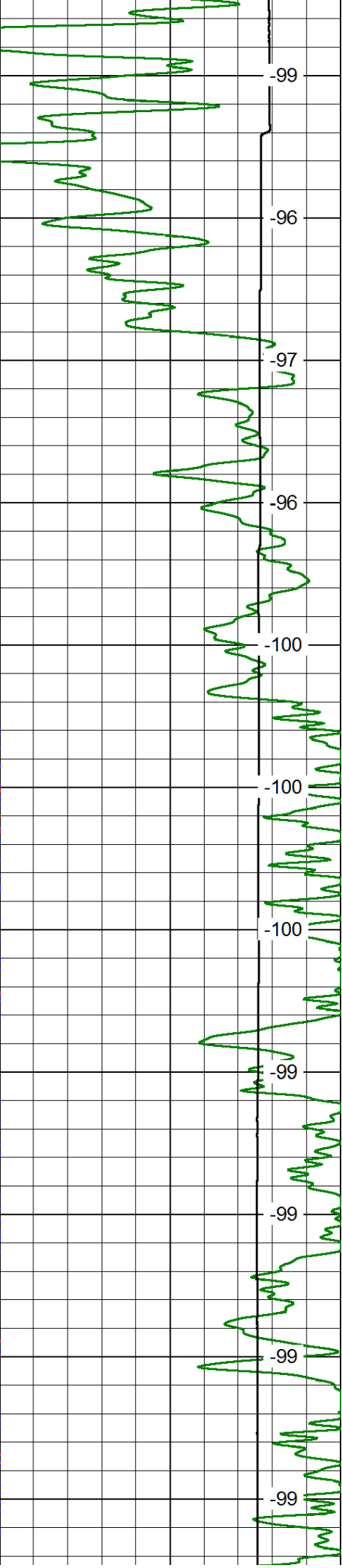
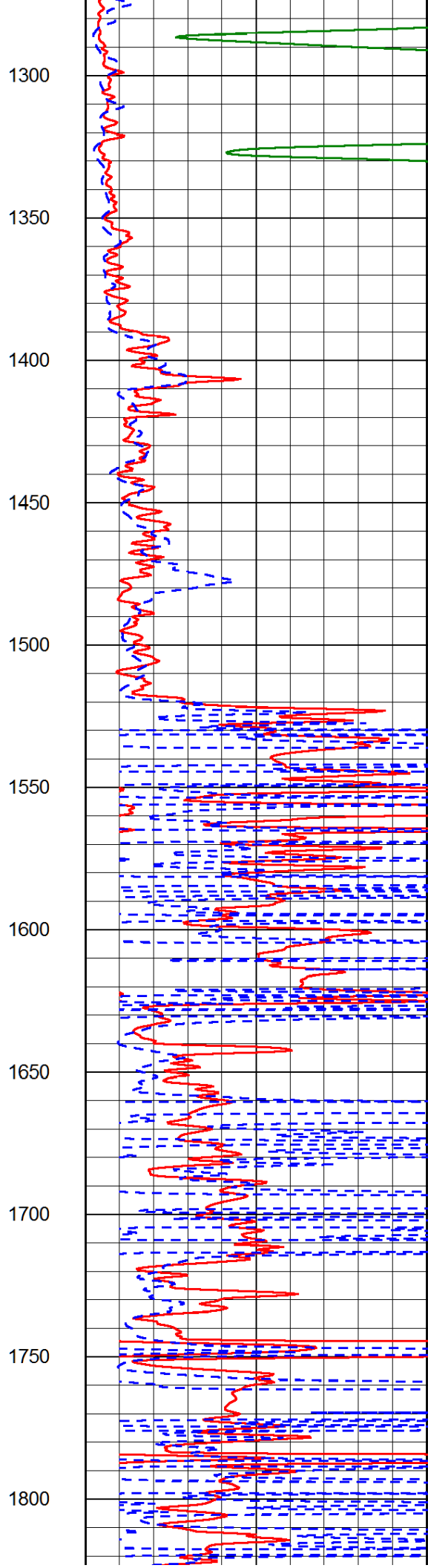
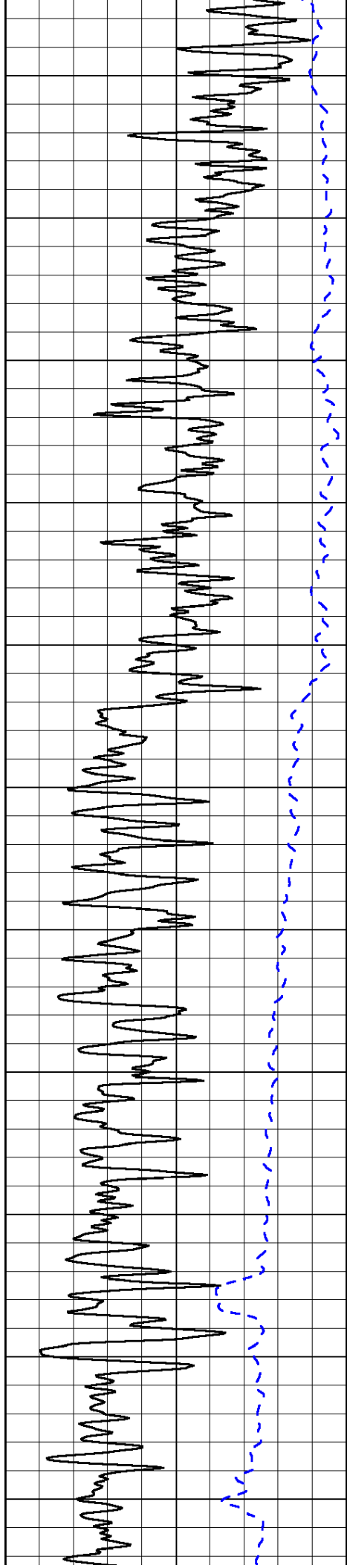
0	Gamma Ray	150
-200	SP (mV)	0

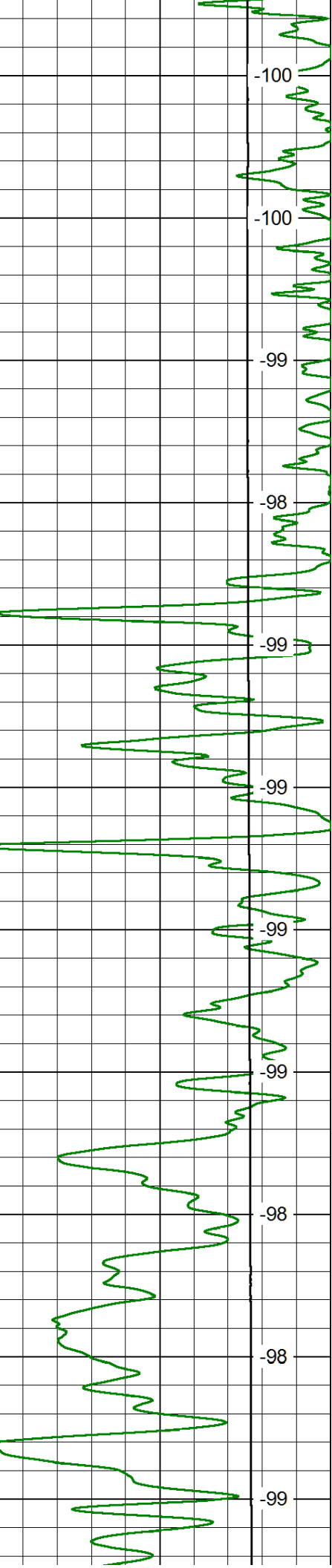
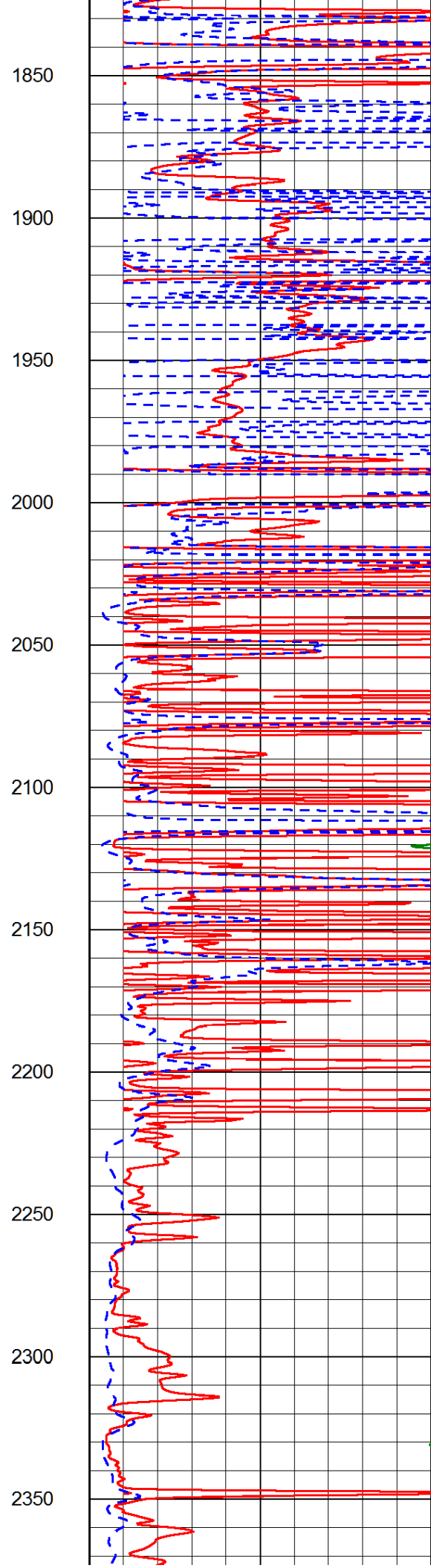
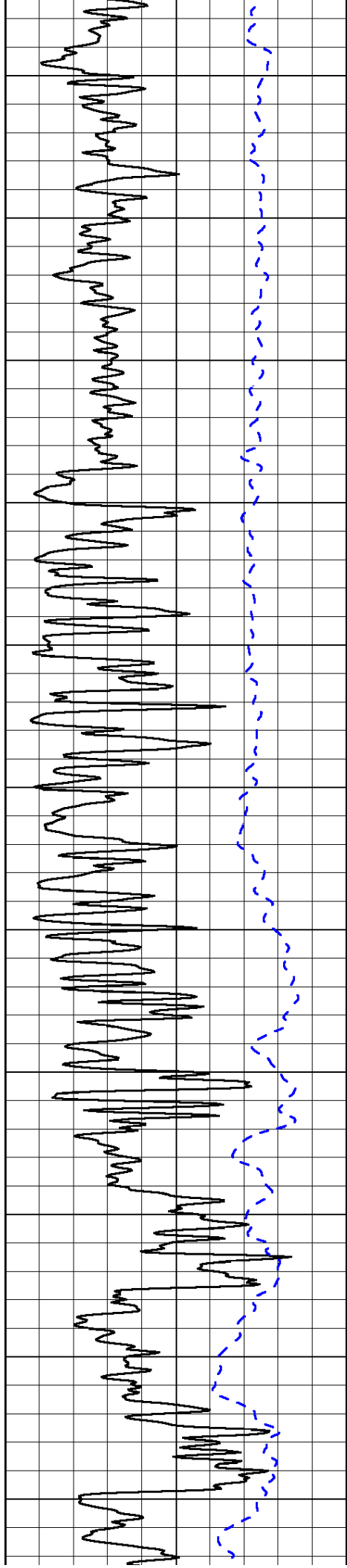
0	Shallow Resistivity	50
0	Deep Resistivity	50
1000	Conductivity	0
15000	Line Tension	0
50	Shallow Resistivity	500
50	Deep Resistivity	500

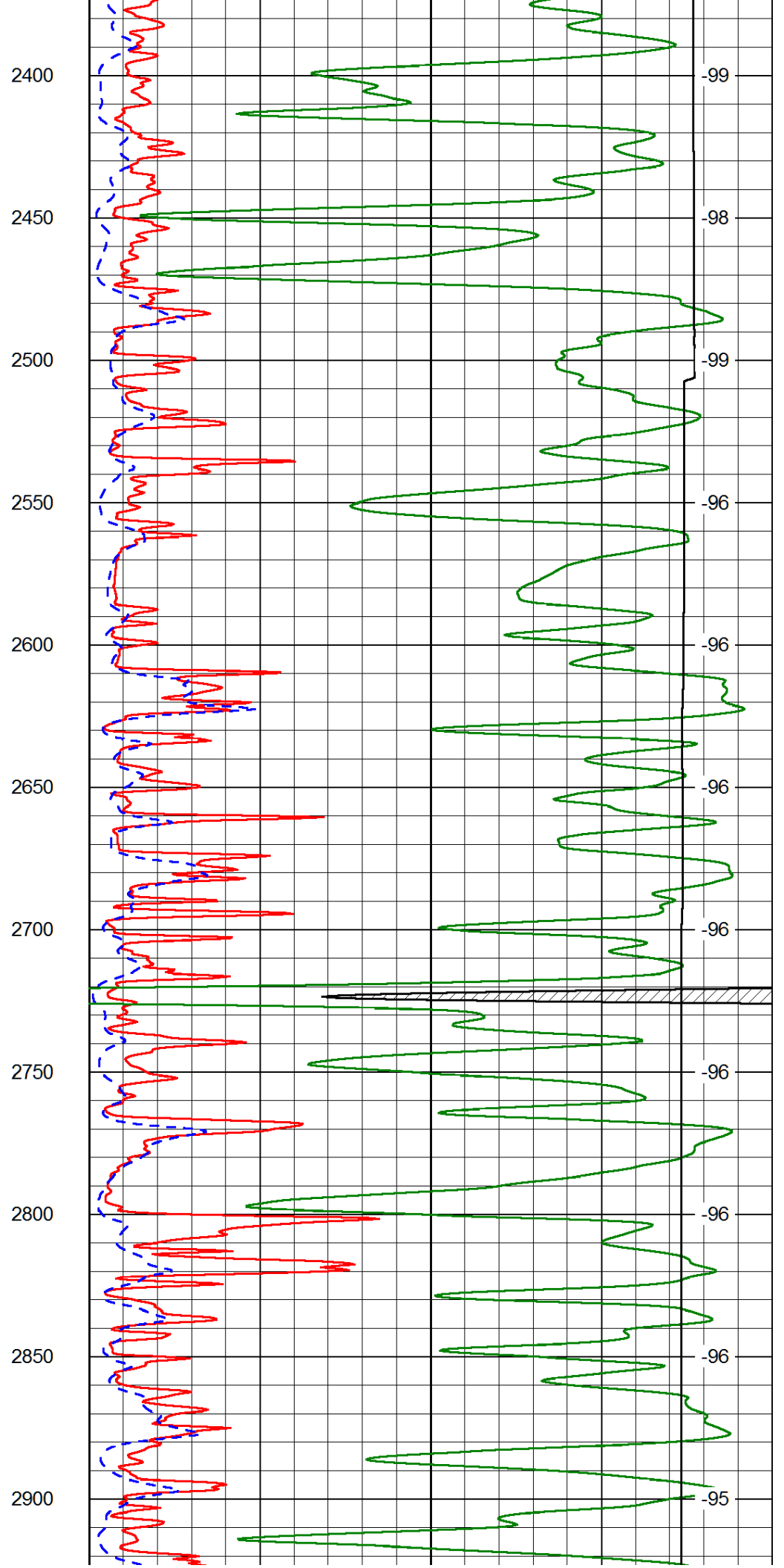
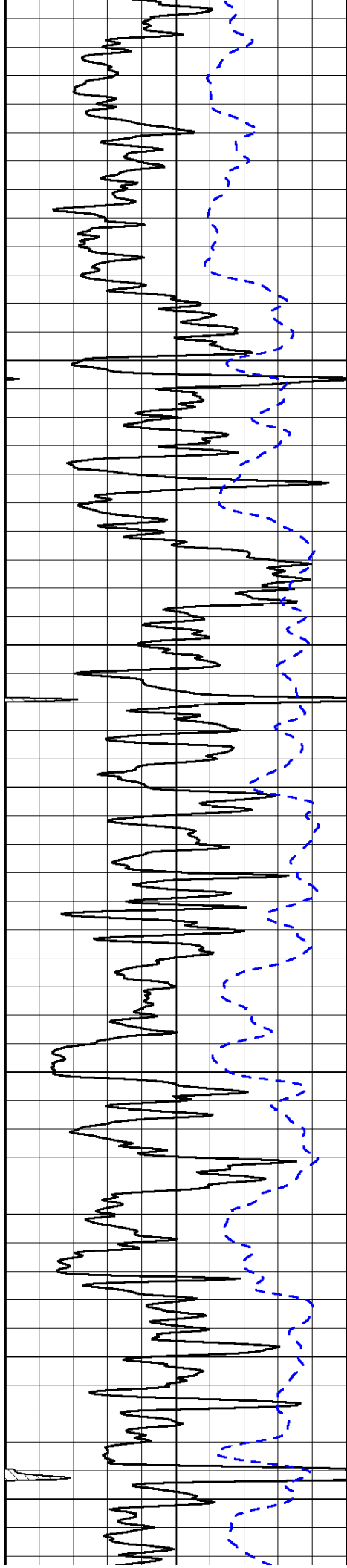
LSPD	0
------	---

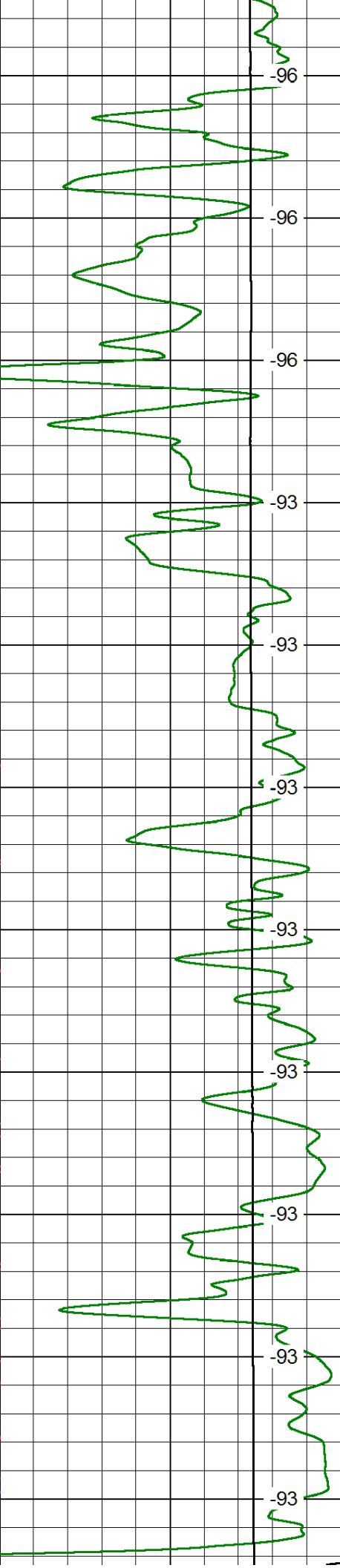
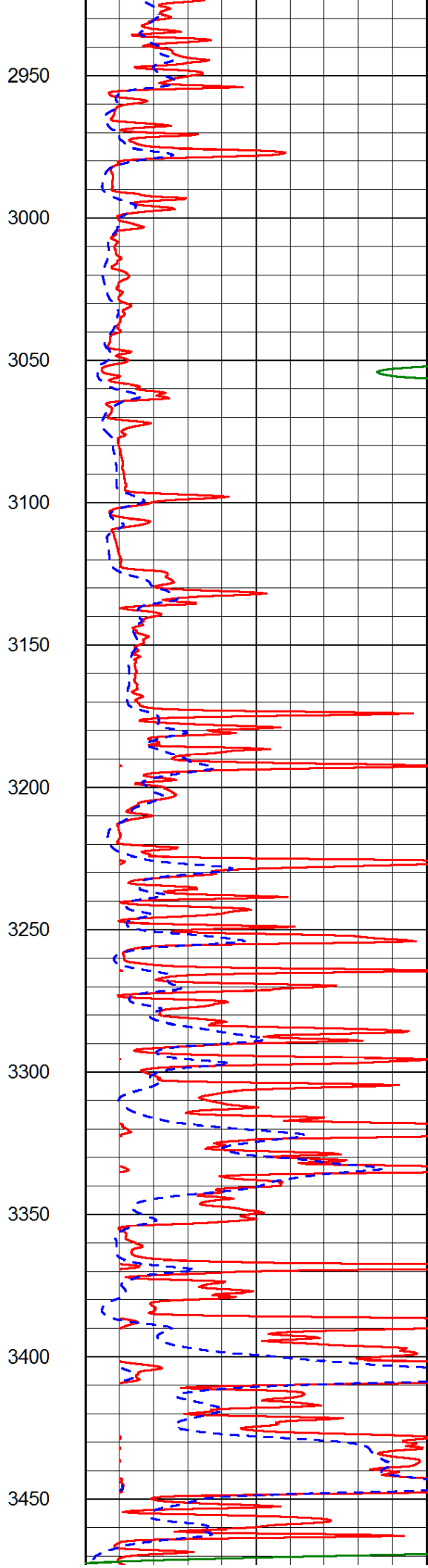
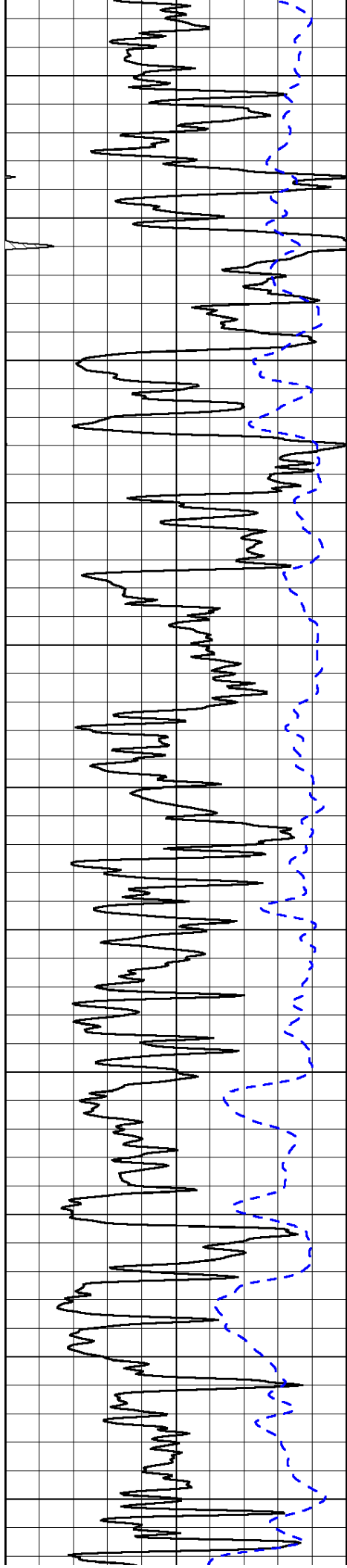


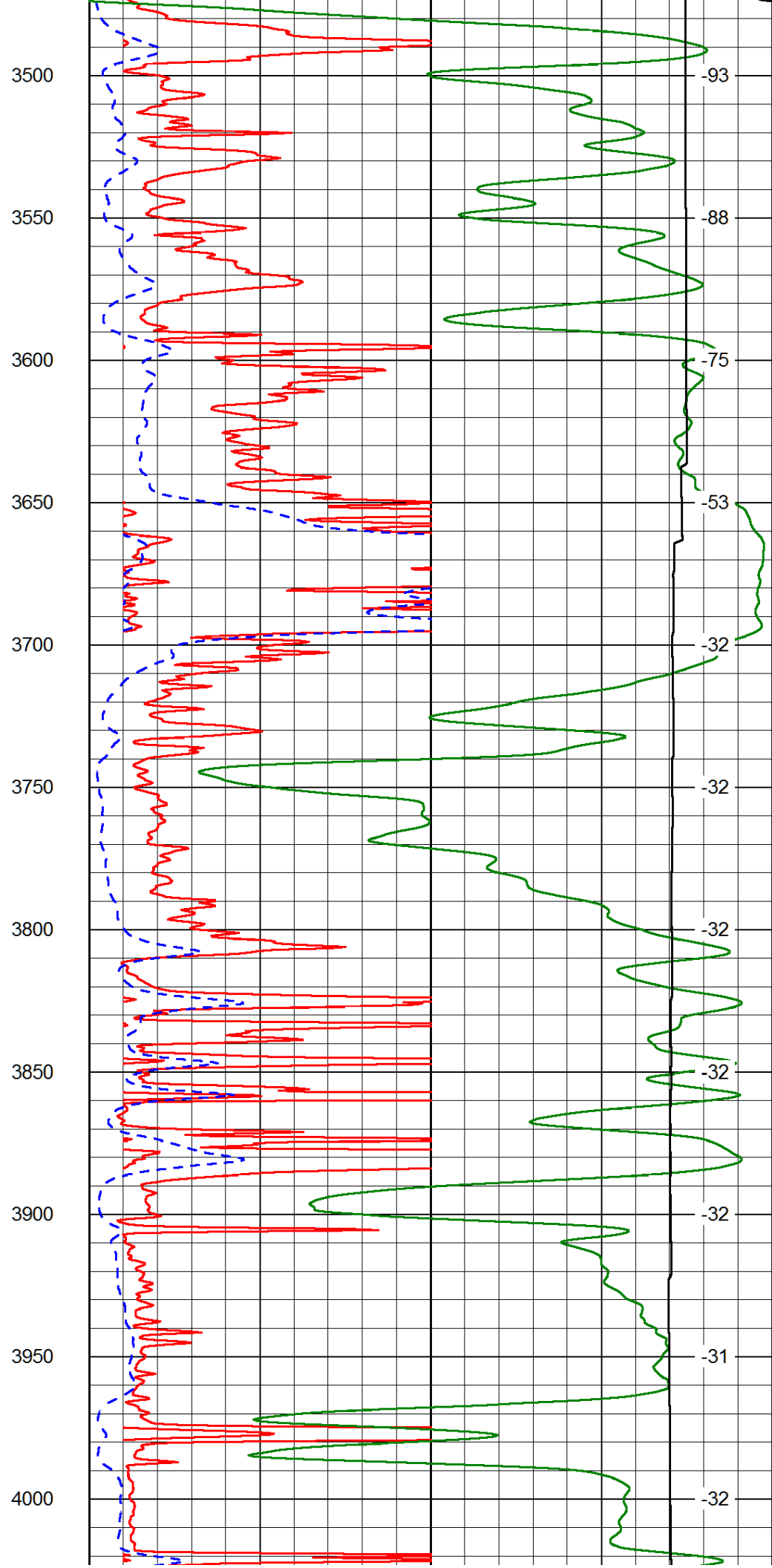
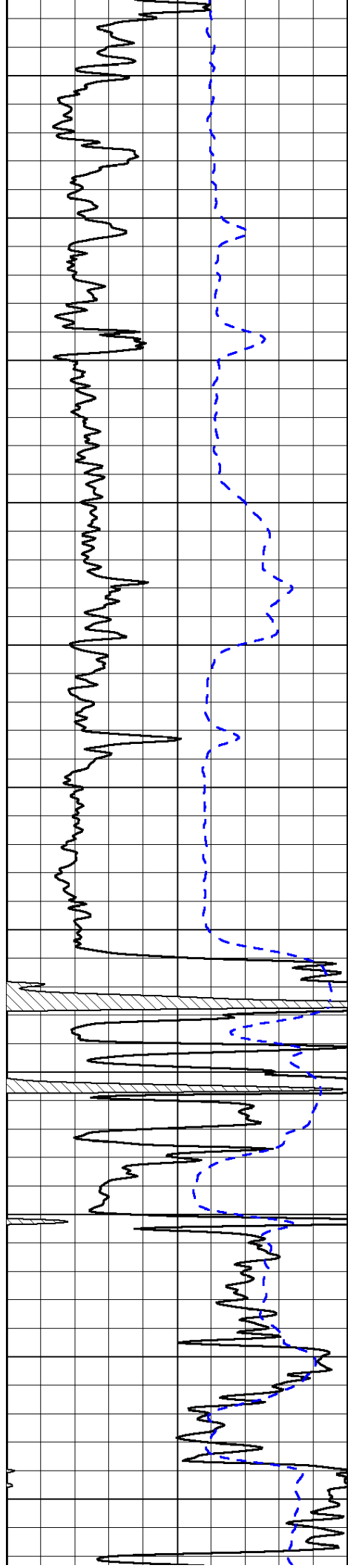


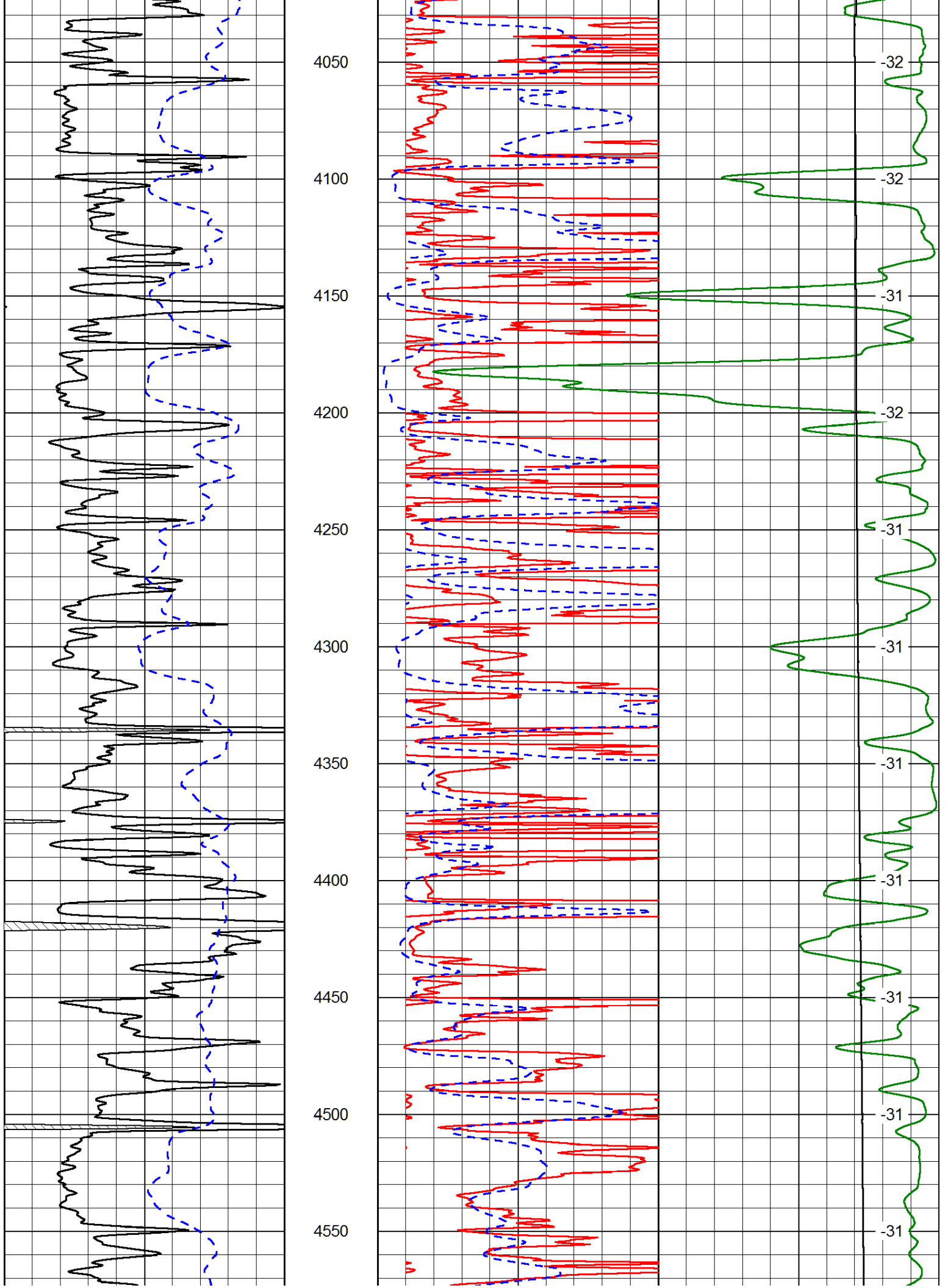


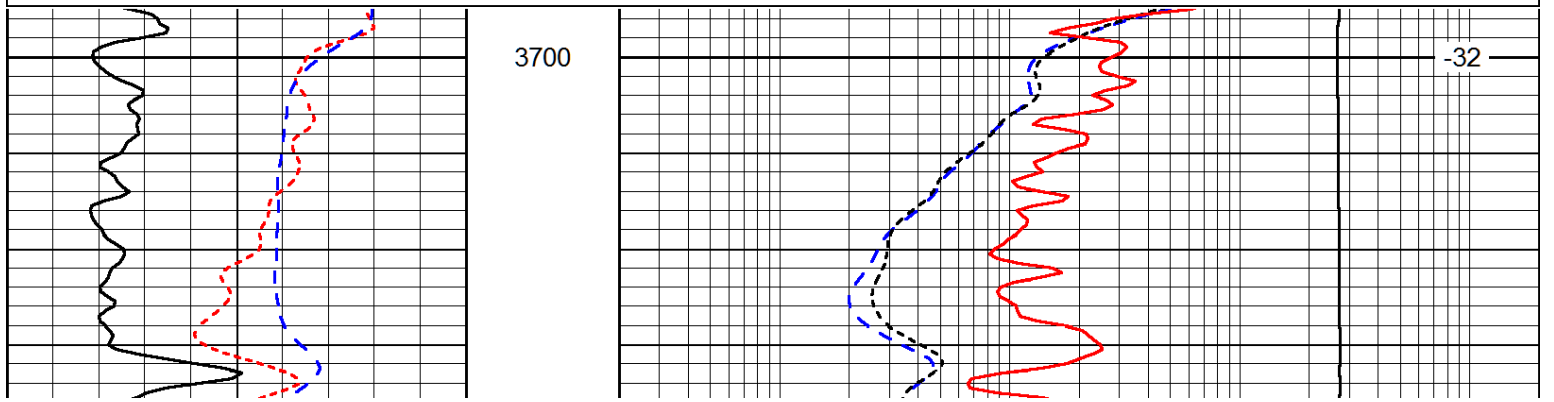
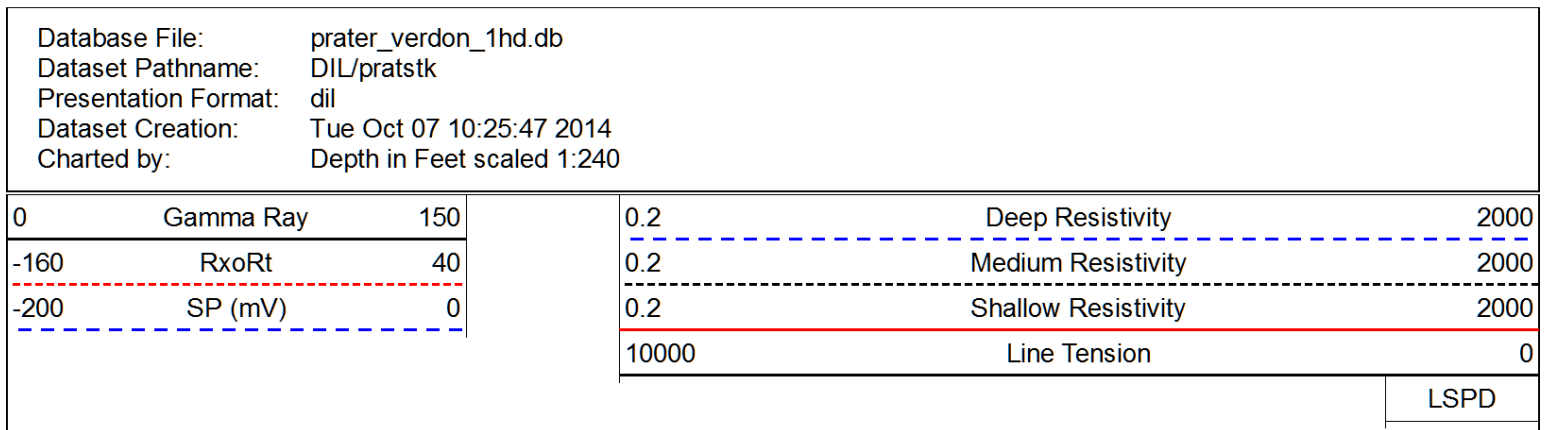
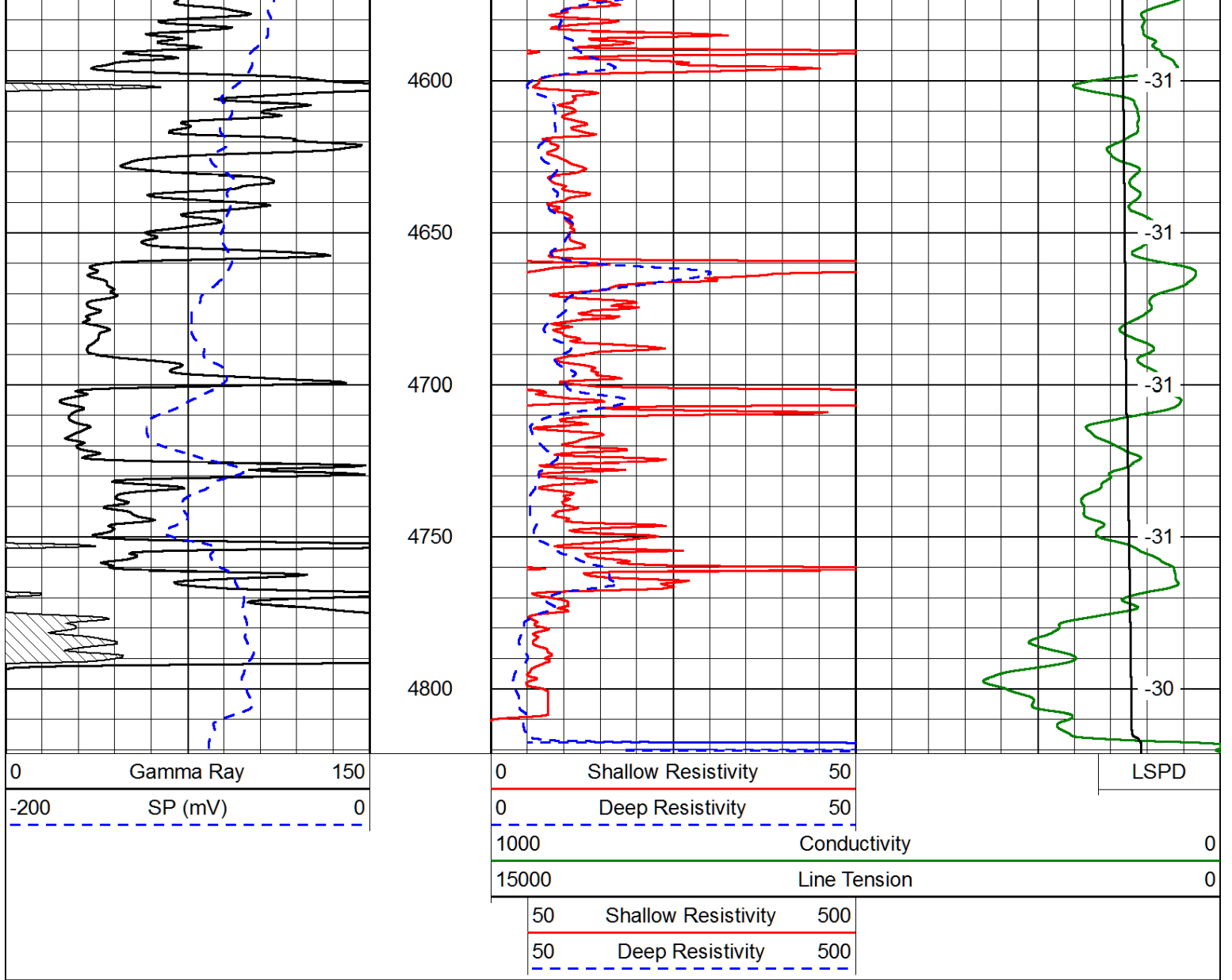


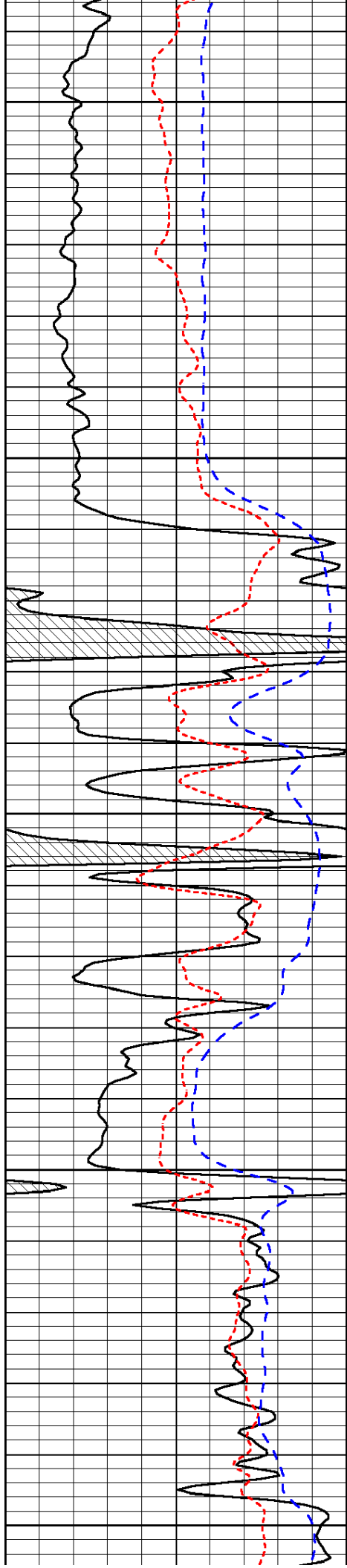












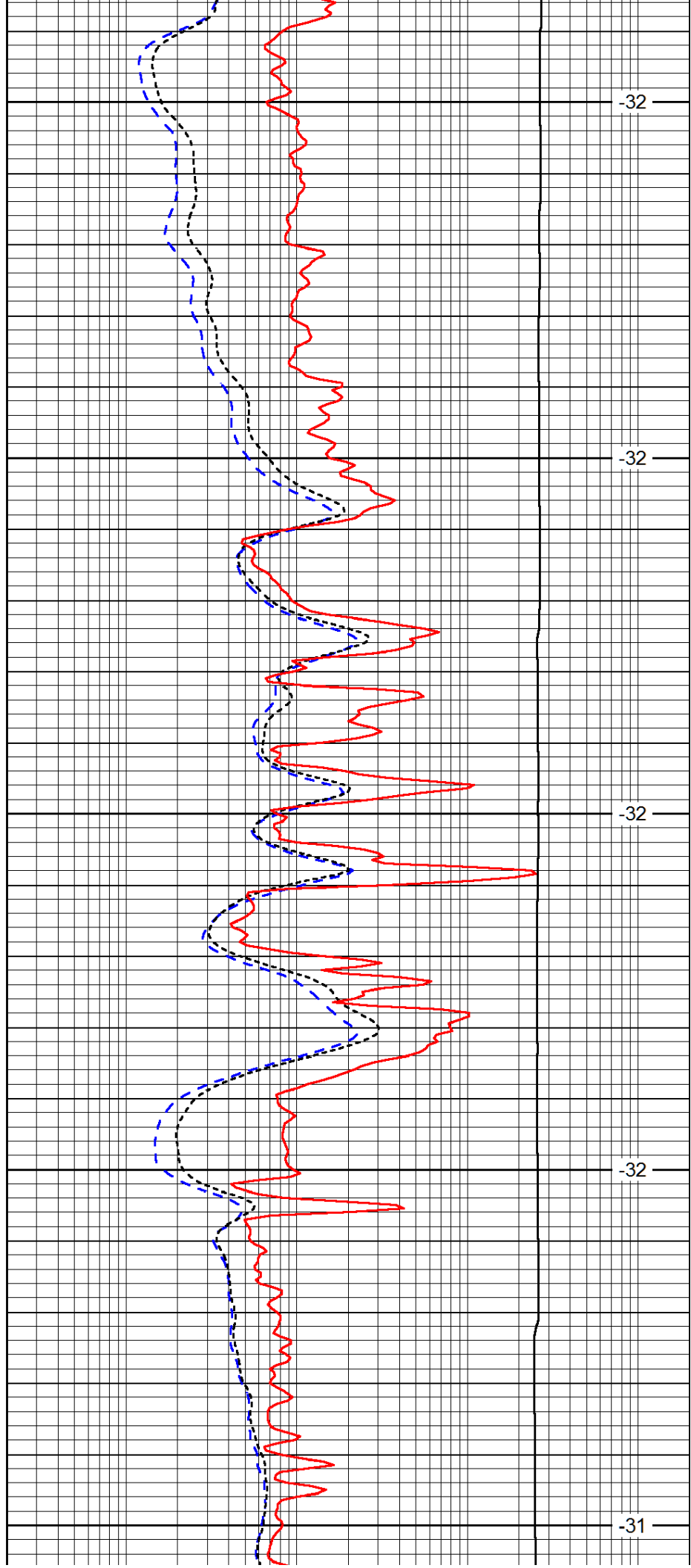
3750

3800

3850

3900

3950



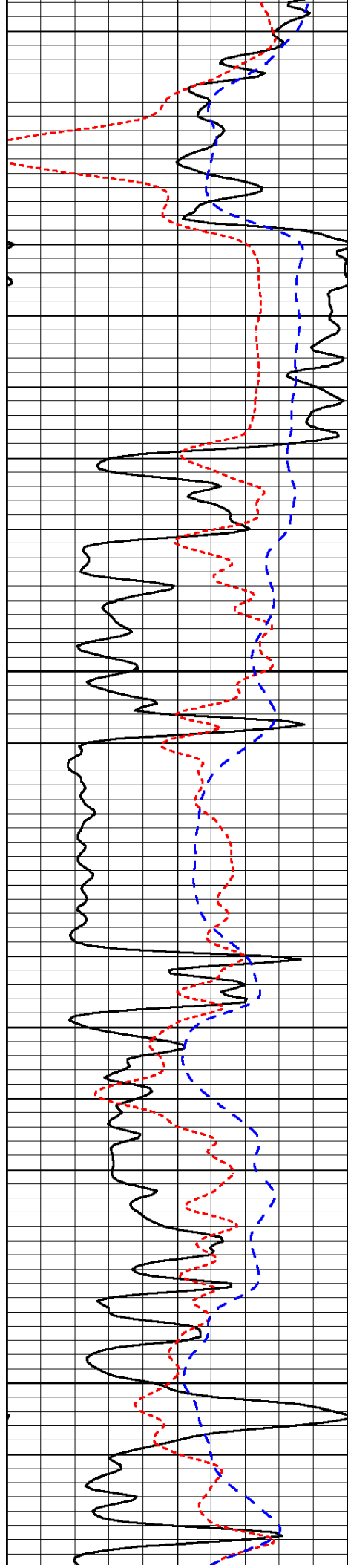
-32

-32

-32

-32

-31

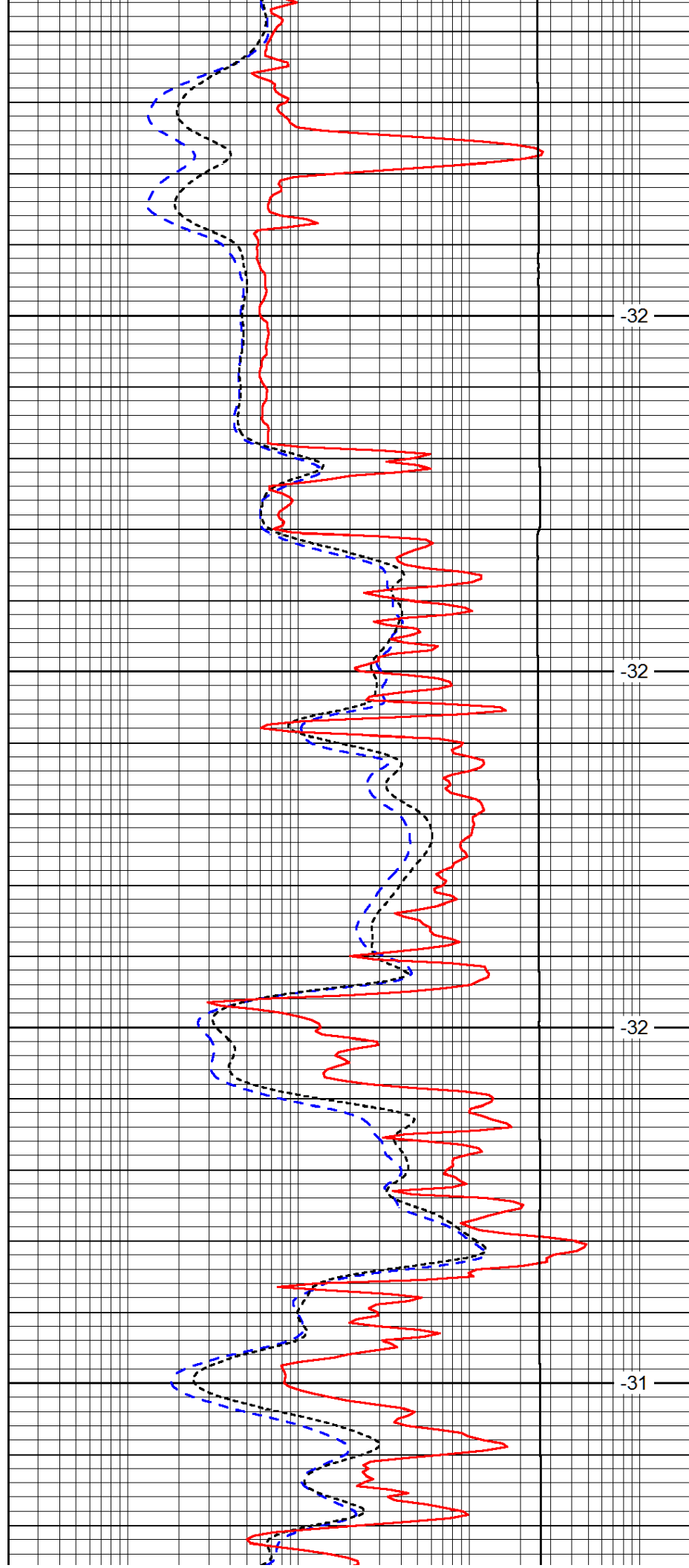


4000

4050

4100

4150

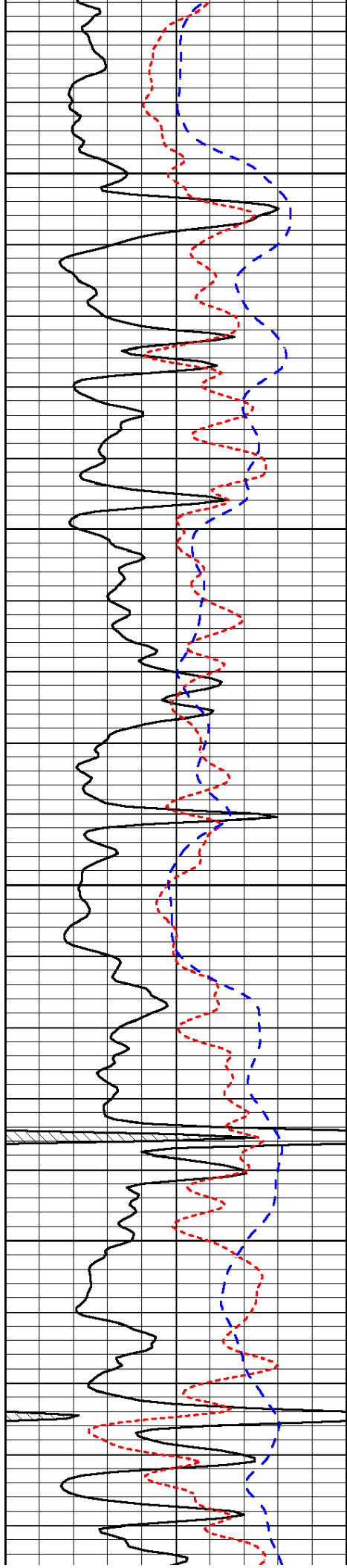


-32

-32

-32

-31

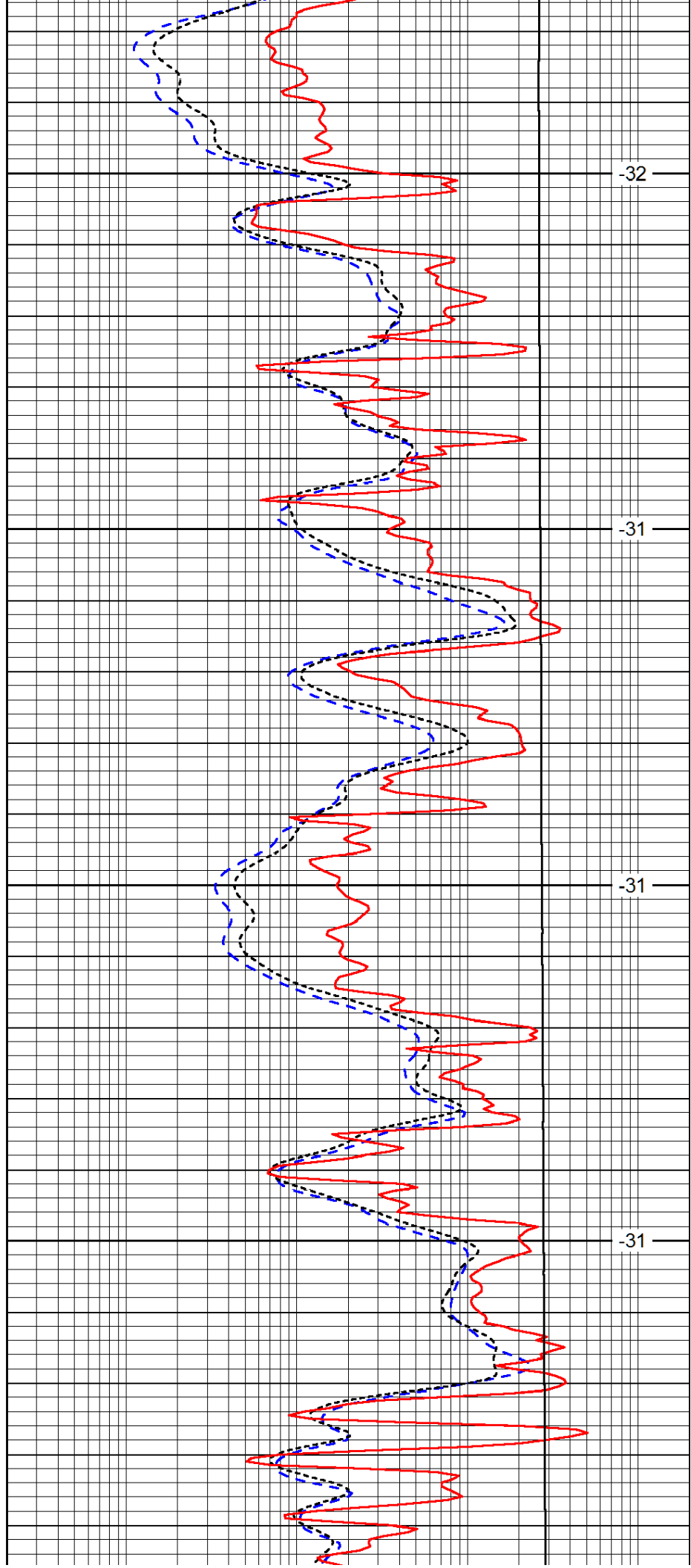


4200

4250

4300

4350

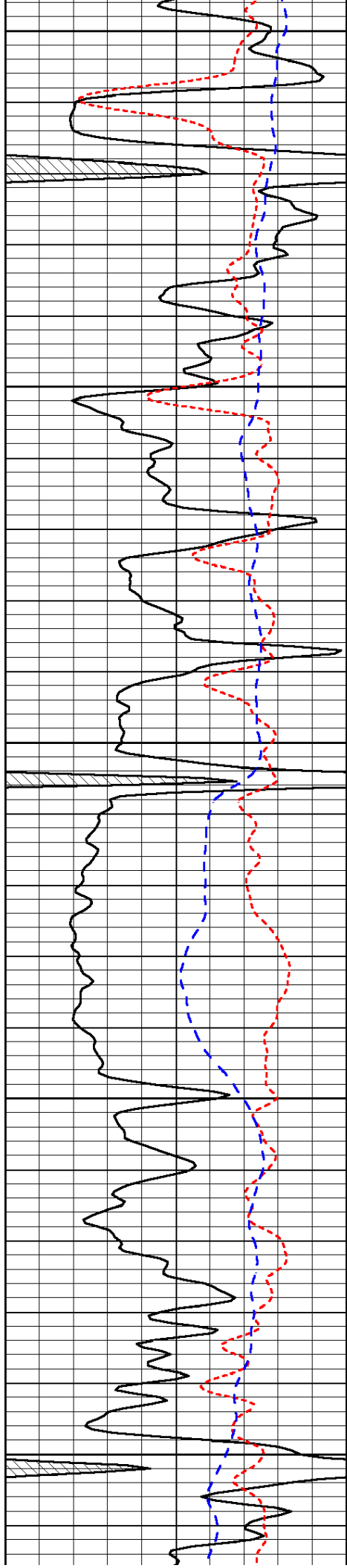


-32

-31

-31

-31



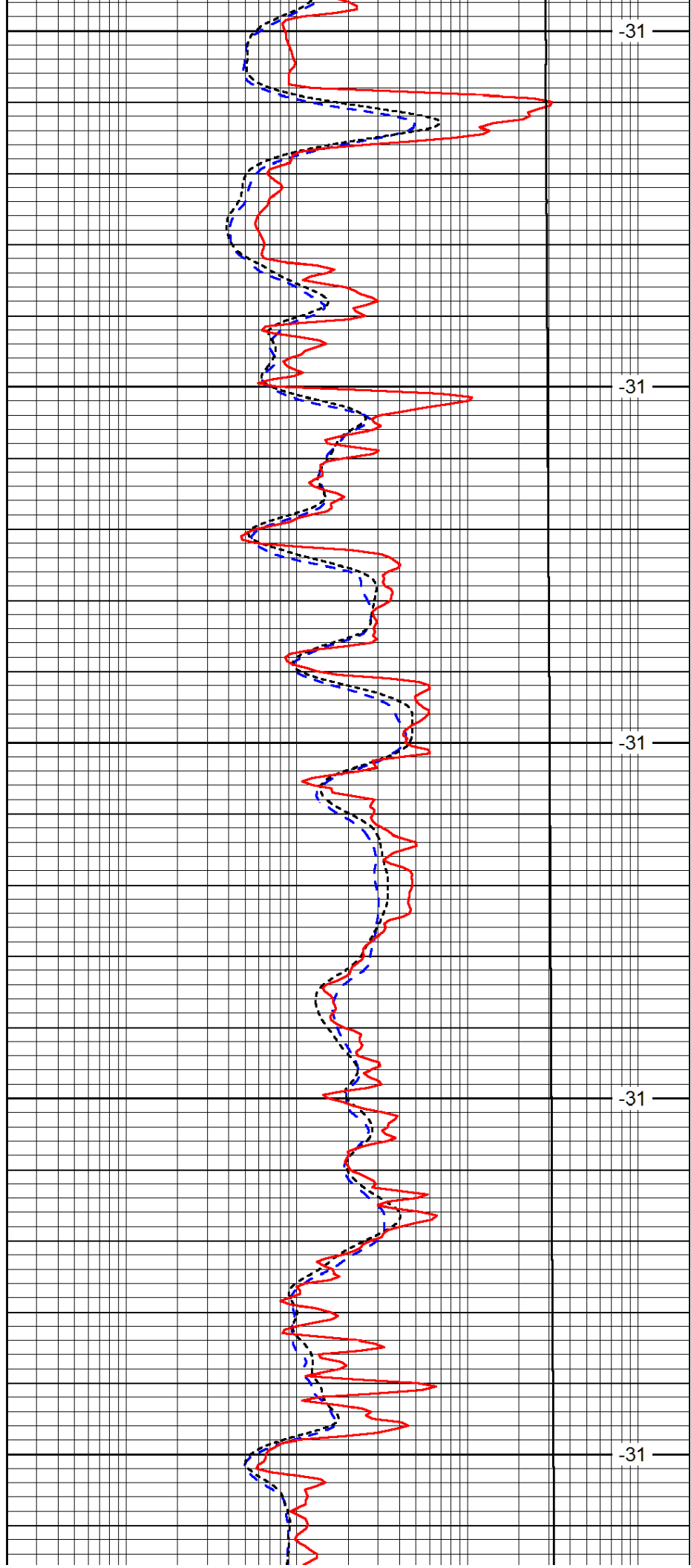
4400

4450

4500

4550

4600



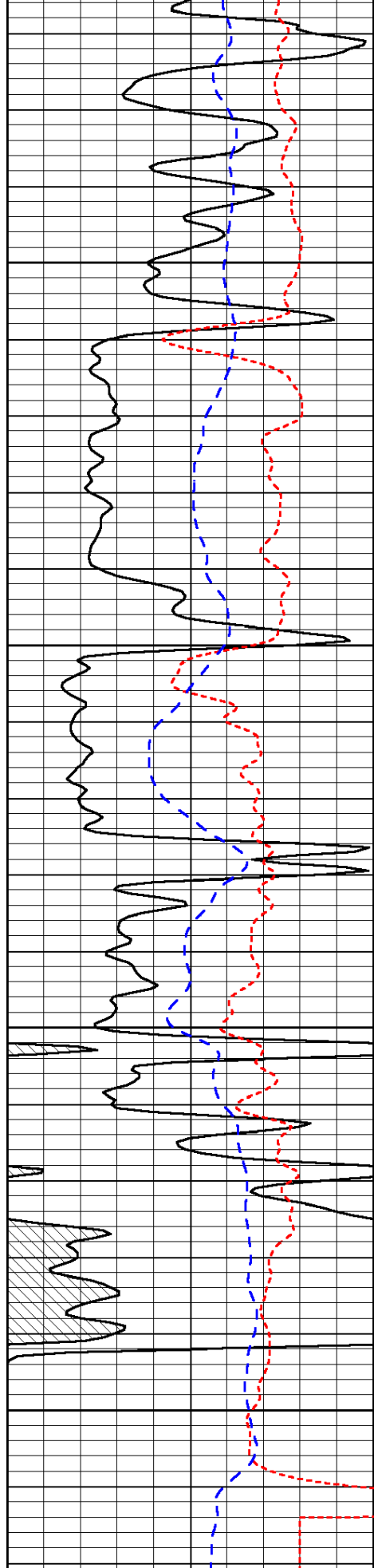
-31

-31

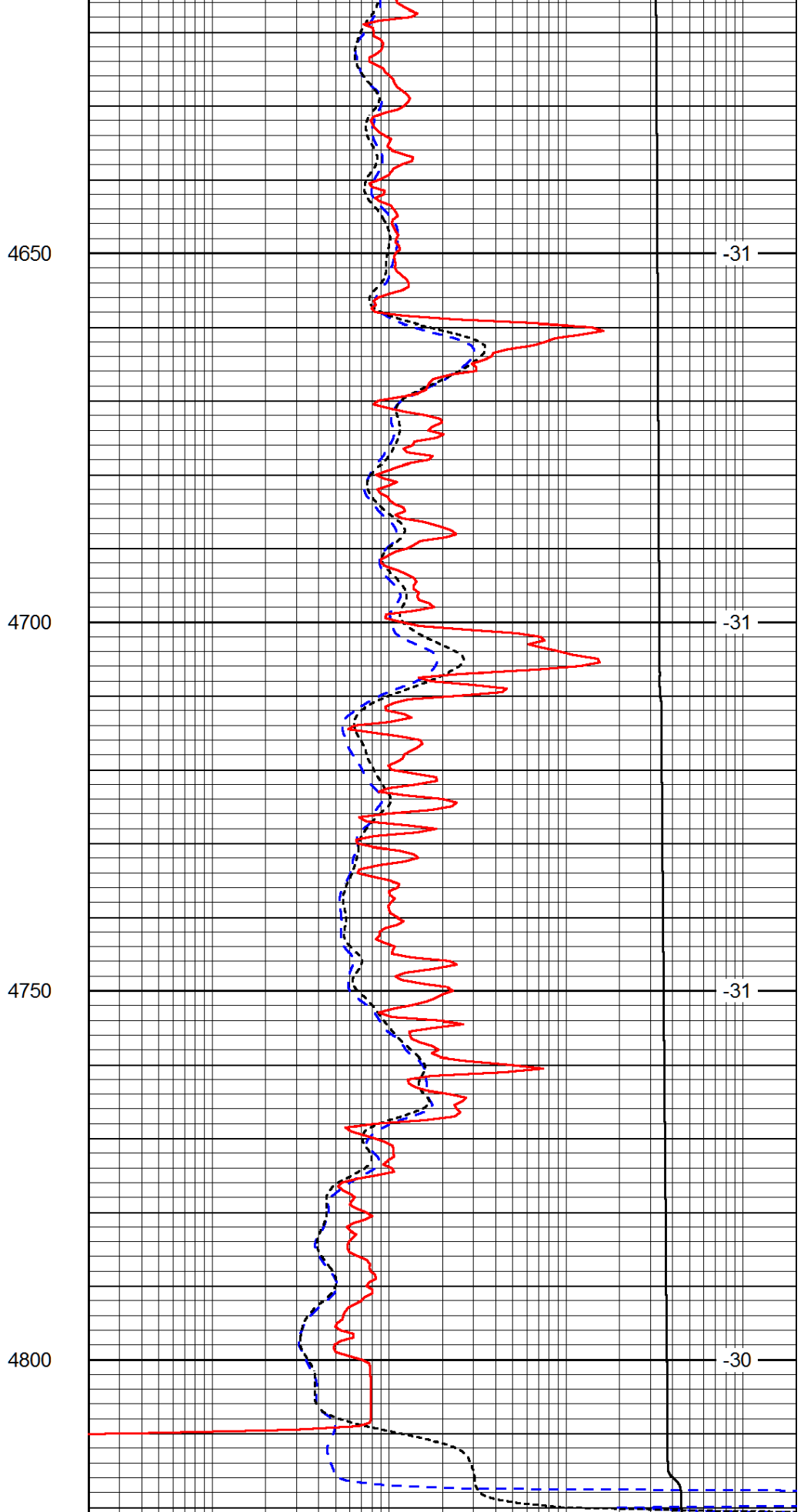
-31

-31

-31



0	Gamma Ray	150
-160	RxoRt	40
-200	SP (mV)	0



0.2	Deep Resistivity	2000
0.2	Medium Resistivity	2000
0.2	Shallow Resistivity	2000

10000

Line Tension

0

LSPD