



Pioneer Energy Services

Dual Compensated Porosity Log

Company Val Energy, Inc.
Well STA LLC #1-1
Field Wildcat
County Thomas **State** Kansas
Location 1574' FSL & 1295' FWL
Other Services DIL/MEL

Sec: 1 **Twp:** 8S **Rge:** 36W
Elevation 3283

Permanent Datum Ground Level Kelly Bushing **Elevation** 3283
Log Measured From Kelly Bushing **10 Ft. Above Perm. Datum**
Drilling Measured From Kelly Bushing
Date 10/12/2014
K.B. 3293
D.F.
G.L. 3283

Run Number	One
Type Log	CNL / CDL
Depth Driller	4850
Depth Logger	4852
Bottom Logged Interval	4831
Top Logged Interval	3500
Type Fluid In Hole	Chemical
Salinity, PPM CL	6000
Density	9.1
Level	Full
Max. Rec. Temp. F	125
Operating Rig Time	3 1/2 Hours
Equipment -- Location	91 Hays
Recorded By	D. Schmidt
Witnessed By	Harley Sayles

Borehole Record		Casing Record				
Run No	Bit From	To	Size	Wgt.	From	To
One	12.25	00	223	8.625	23#	00
Two	7.875	223	TD			223

<<< Fold Here >>>

All interpretations are opinions based on inferences from electrical or other measurements and we cannot and do not guarantee the accuracy or correctness of any interpretation, and we shall not, except in the case of gross or willful negligence on our part, be liable or responsible for any loss, costs, damages, or expenses incurred or sustained by anyone resulting from any interpretation made by any of our officers, agents or employees. These interpretations are also subject to our general terms and conditions set out in our current Price Schedule.

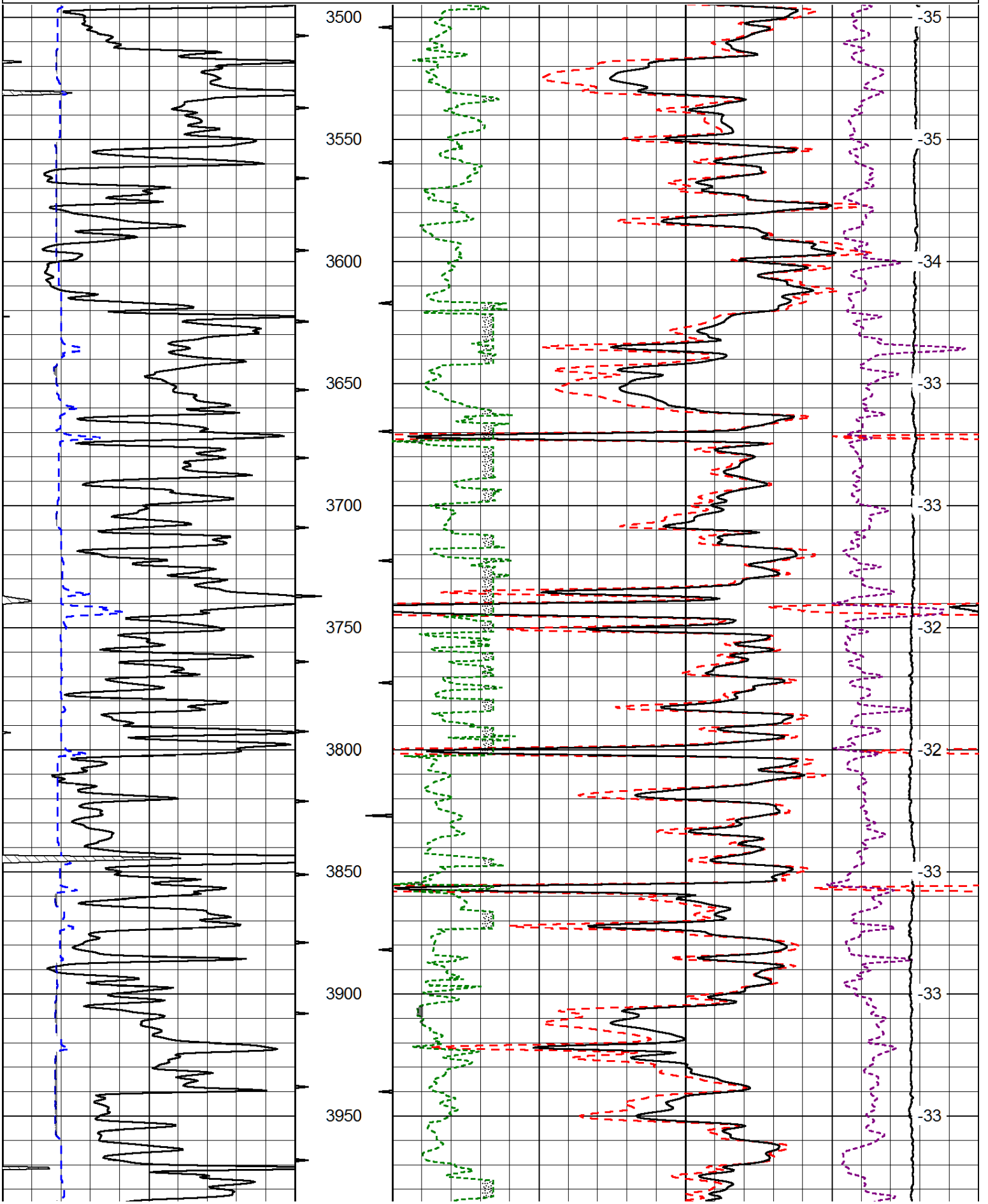
Comments

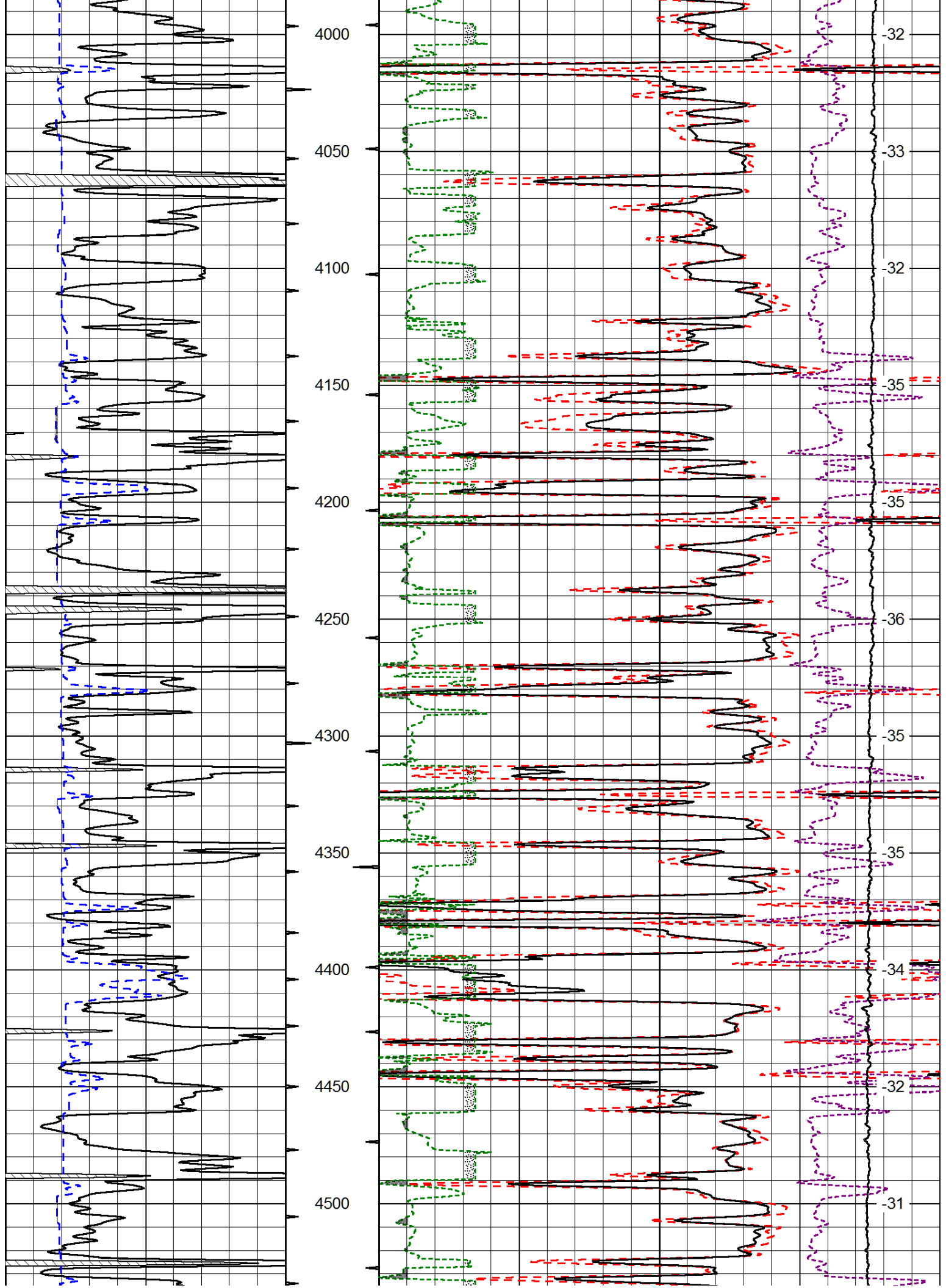
Thank you for using Log-Tech, Inc.
 (785) 625-3858
 Colby,
 West on I-70 to Levant Exit,
 North to Old Hwy 24, West to 8 Rd,
 North to S Rd, 1 3/4 West,
 South into

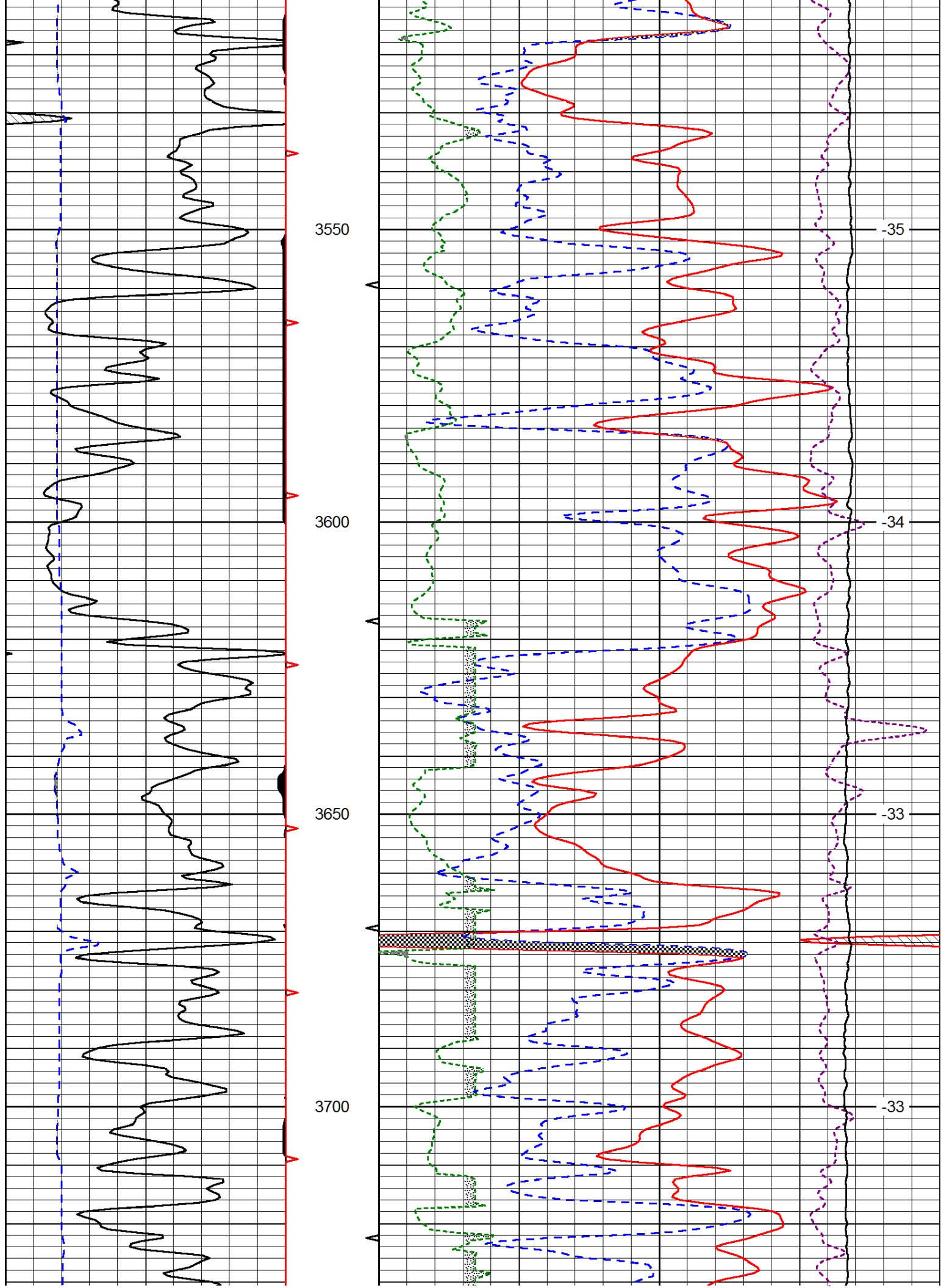
Database File: val_sta llc_1-1hd.db
 Dataset Pathname: dil/vastkml
 Presentation Format: cdl
 Dataset Creation: Sun Oct 12 21:41:50 2014
 Charted by: Depth in Feet scaled 1:600

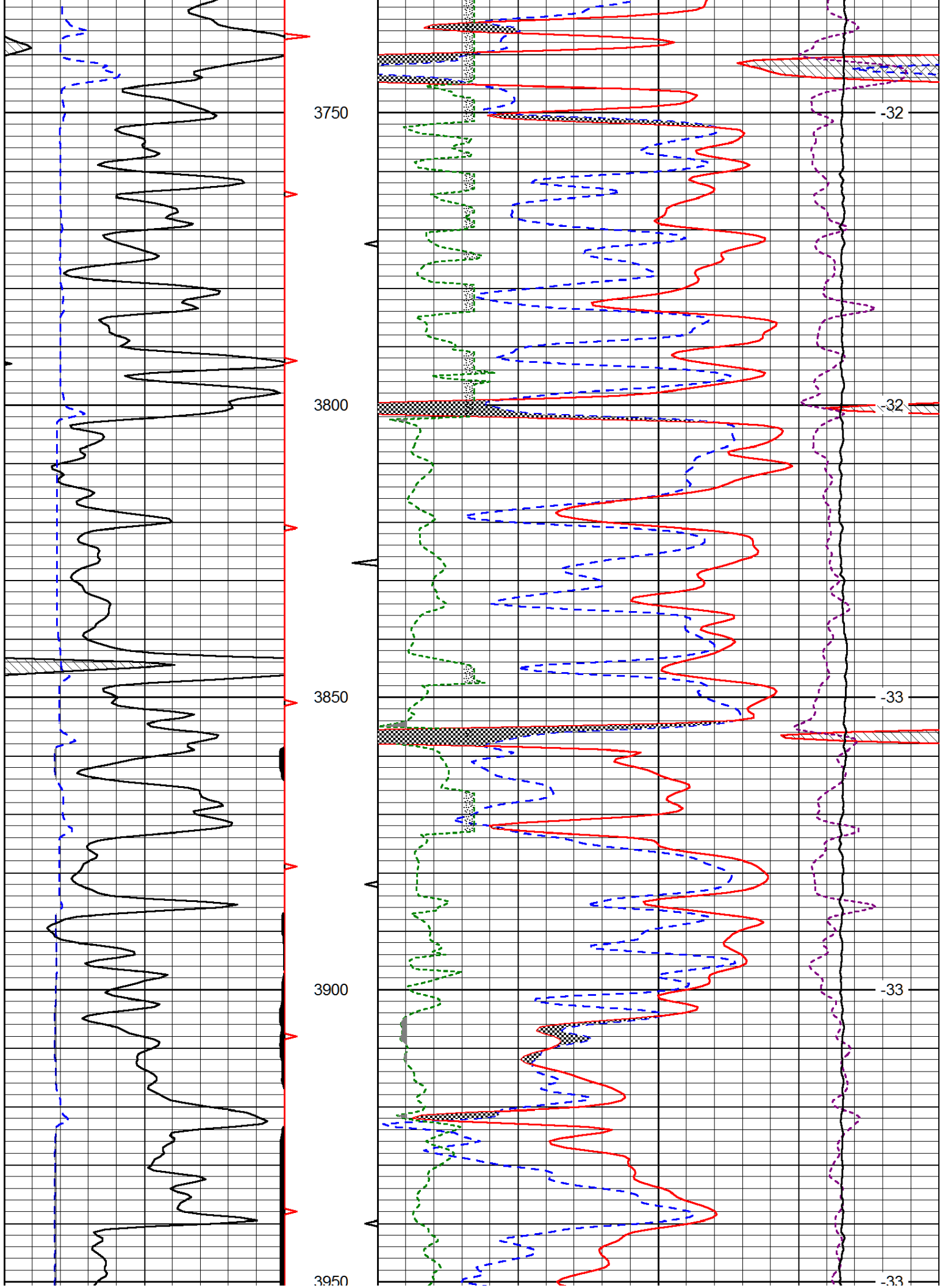
0	Gamma Ray	150
6	Caliper (GAPI)	16

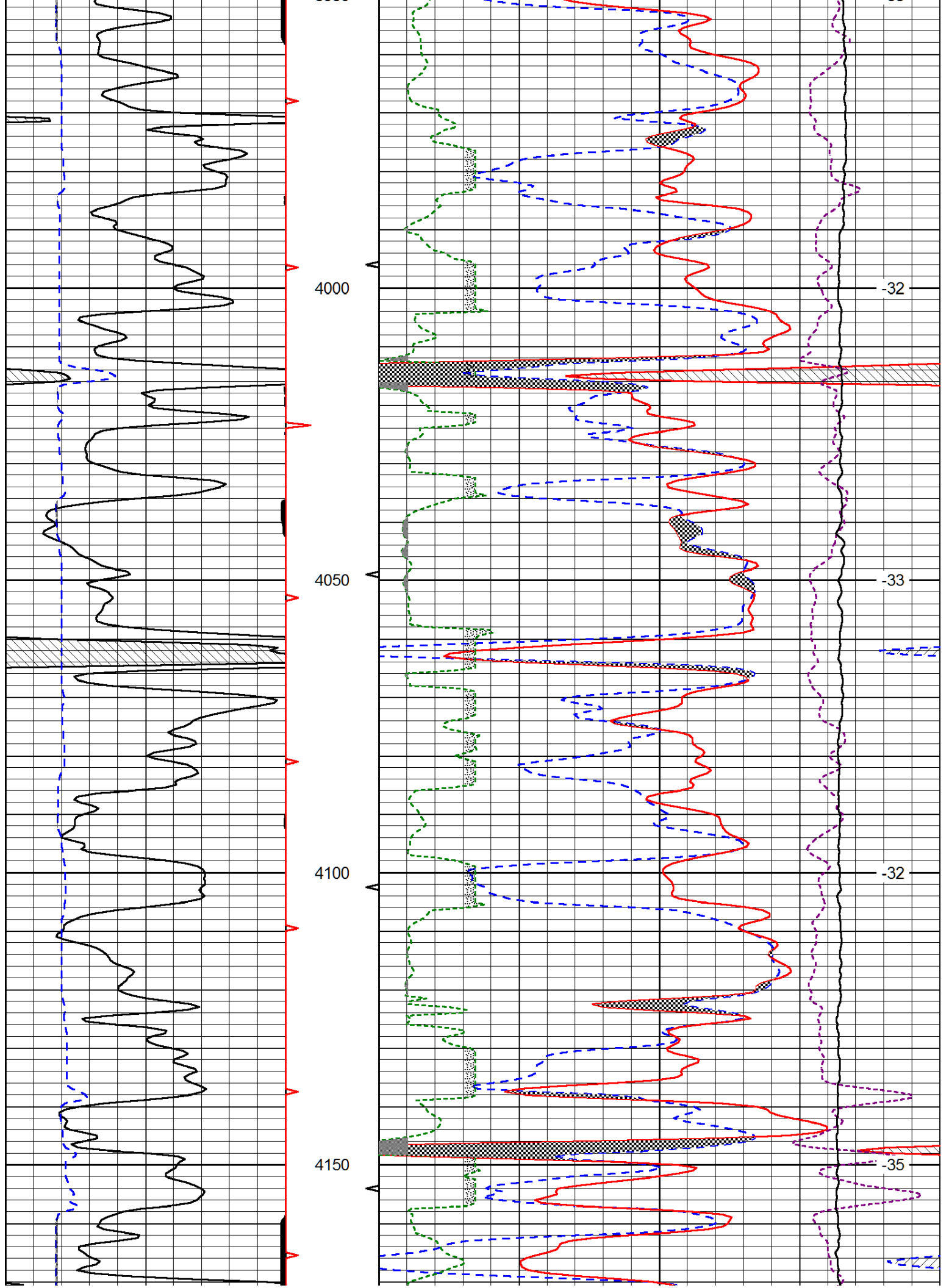
30	Compensated Density		-10
2	Bulk Density		3
15000	Line Tension		0
2.625	DGA	3.425	-0.25
			Correction
			0.25
			LSPD

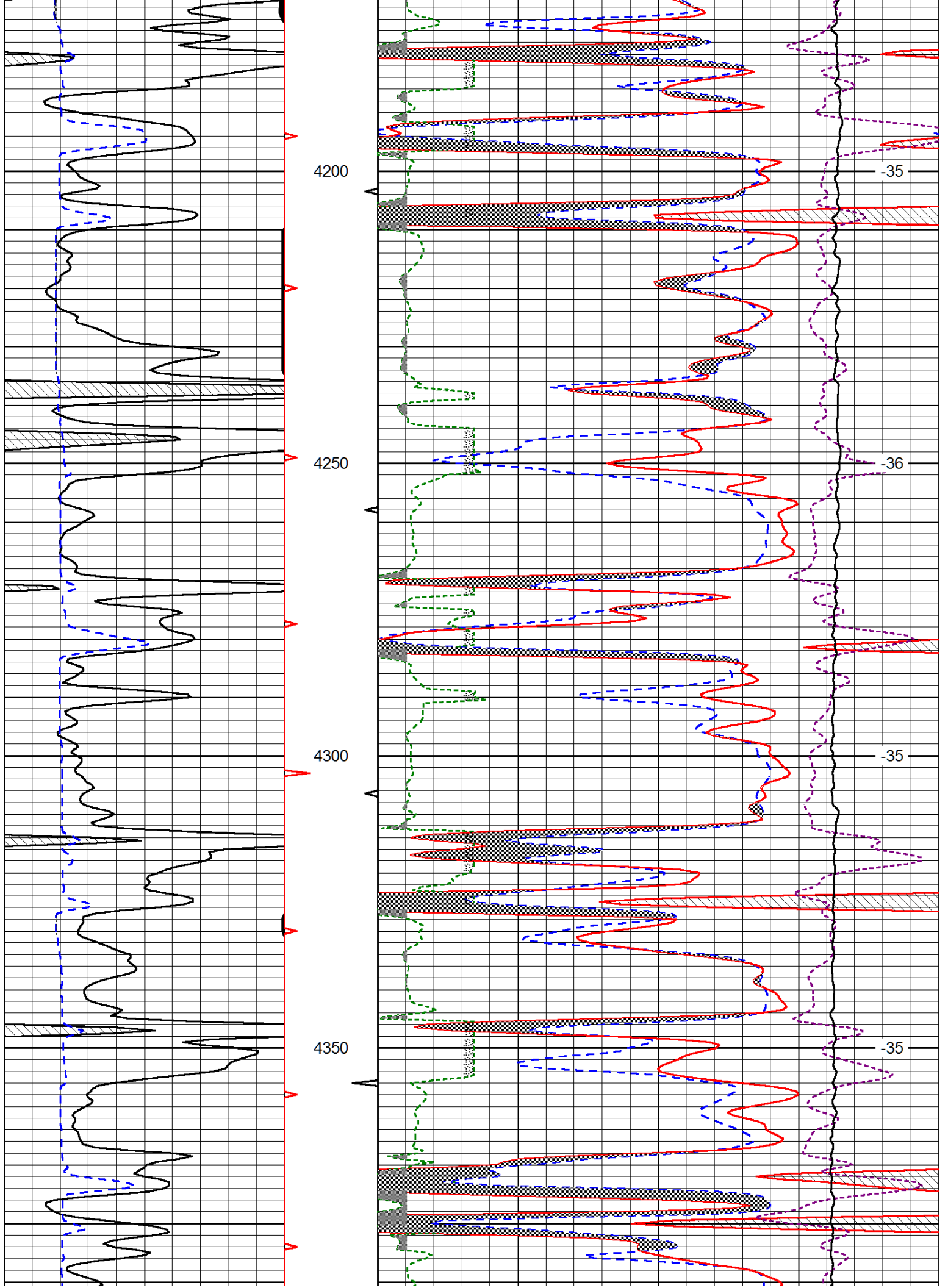


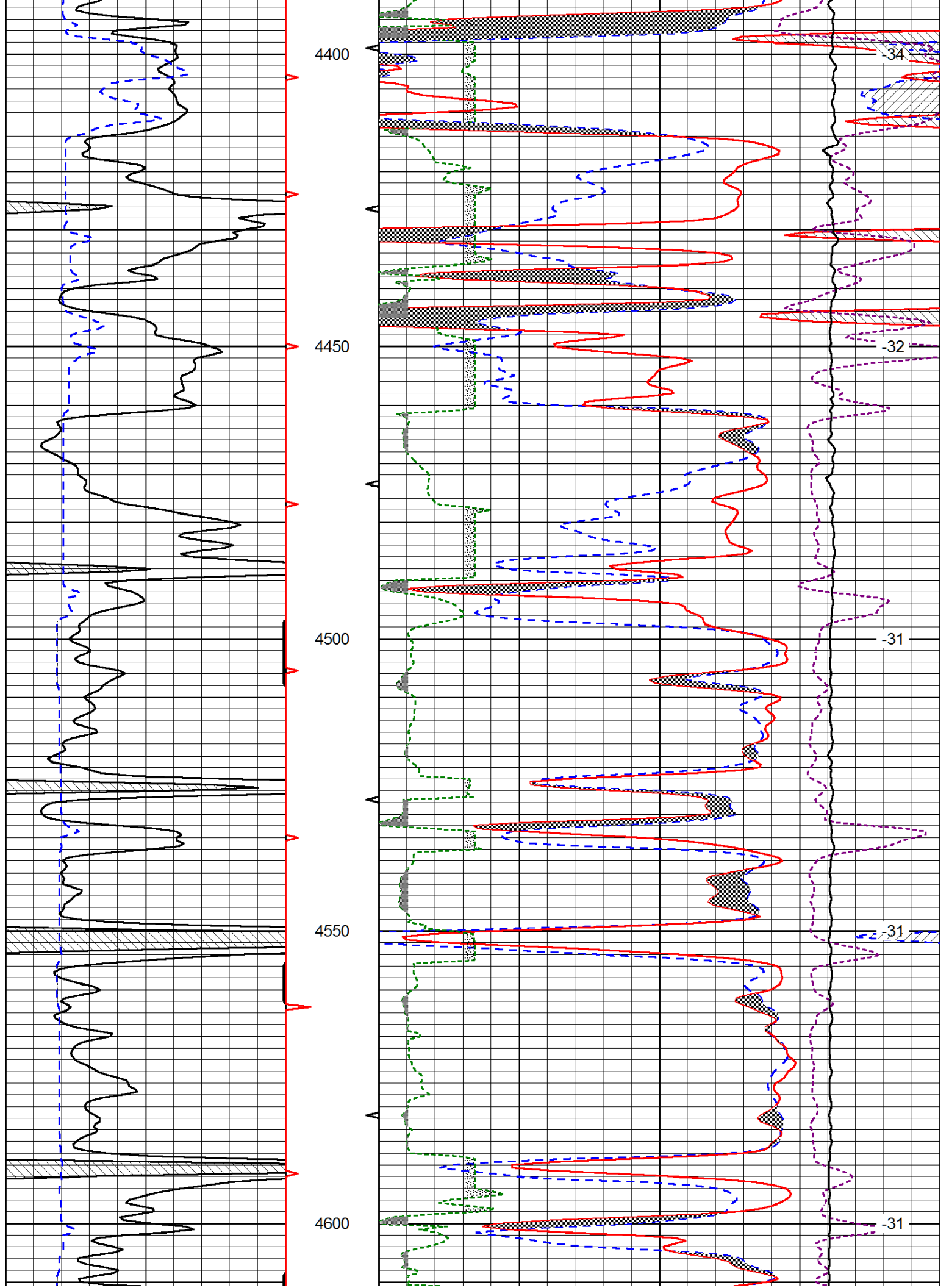


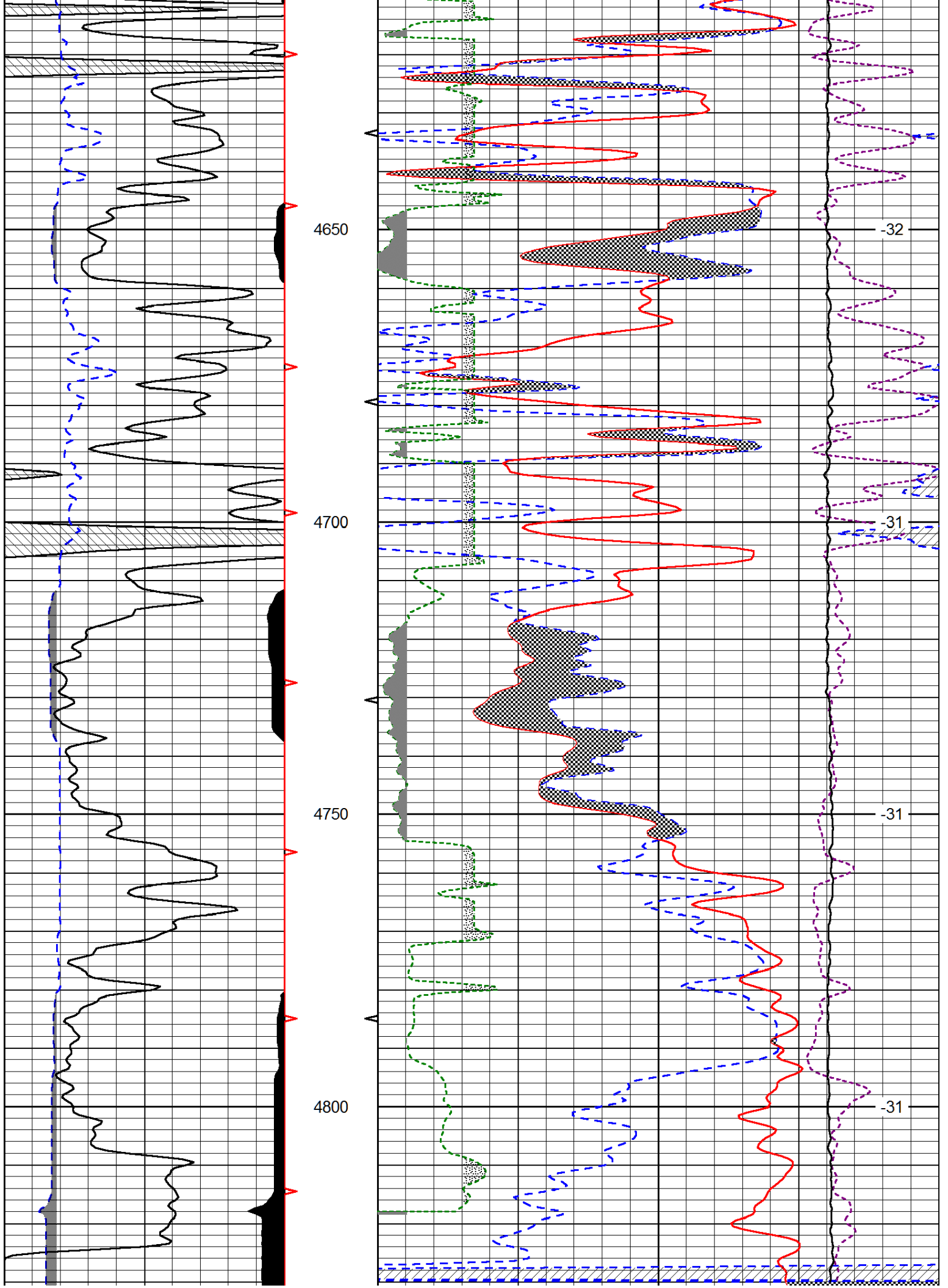


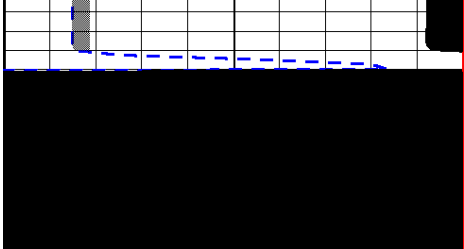












4850



0	Gamma Ray	150
6	Caliper (GAPI)	16

30	CNLS			-10	
30	Compensated Density (2.71 ma)			-10	
2.625	DGA	3.425	-0.25	Correction	0.25
10000	Line Tension			0	

LSPD