



Pioneer Energy Services

Dual Induction Log

15-193-20928-00-00

API No.

Company **Val Energy, Inc.**

Well **STA LLC #1-1**

Field **Wildcat**

County **Thomas**

State

Kansas

Location **1574' FSL & 1295' FWL**

Sec: **1**

Twp: **8S**

Rge: **36W**

Other Services
CNL/CDL
MEL

Elevation

K.B. 3293
D.F.
G.L. 3283

Permanent Datum Ground Level Elevation 3283
Log Measured From Kelly Bushing 10 Ft. Above Perm. Datum
Drilling Measured From Kelly Bushing

Date	10/12/2014
Run Number	One
Depth Driller	4850
Depth Logger	4852
Bottom Logged Interval	4851
Top Log Interval	200
Casing Driller	8.625 @ 223
Casing Logger	220
Bit Size	7.875
Type Fluid in Hole	Chemical
Salinity, ppm CL	6000
Density / Viscosity	9.1 63
pH / Fluid Loss	10.5 8.0
Source of Sample	Flowline
Rm @ Meas. Temp	0.50 @ 60
Rmf @ Meas. Temp	0.38 @ 60
Rmc @ Meas. Temp	0.68 @ 60
Source of Rmf / Rmc	Charts
Rm @ BHT	0.24 @ 125
Operating Rig Time	3 1/2 Hours
Max Rec. Temp. F	125
Equipment Number	91
Location	Hays
Recorded By	D. Schmidt
Witnessed By	Harley Sayles

<<< Fold Here >>>

All interpretations are opinions based on inferences from electrical or other measurements and we cannot and do not guarantee the accuracy or correctness of any interpretation, and we shall not, except in the case of gross or willful negligence on our part, be liable or responsible for any loss, costs, damages, or expenses incurred or sustained by anyone resulting from any interpretation made by any of our officers, agents or employees. These interpretations are also subject to our general terms and conditions set out in our current Price Schedule.

Comments

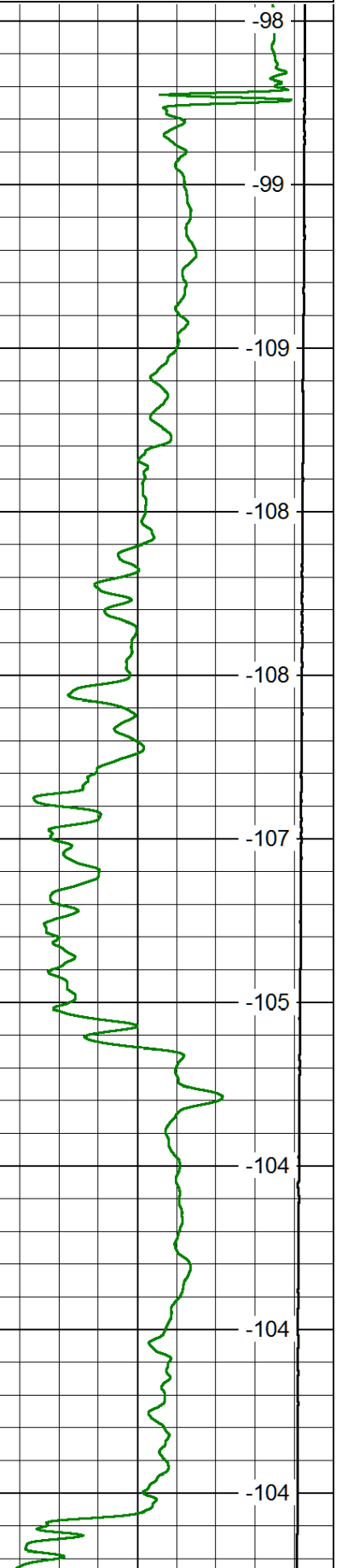
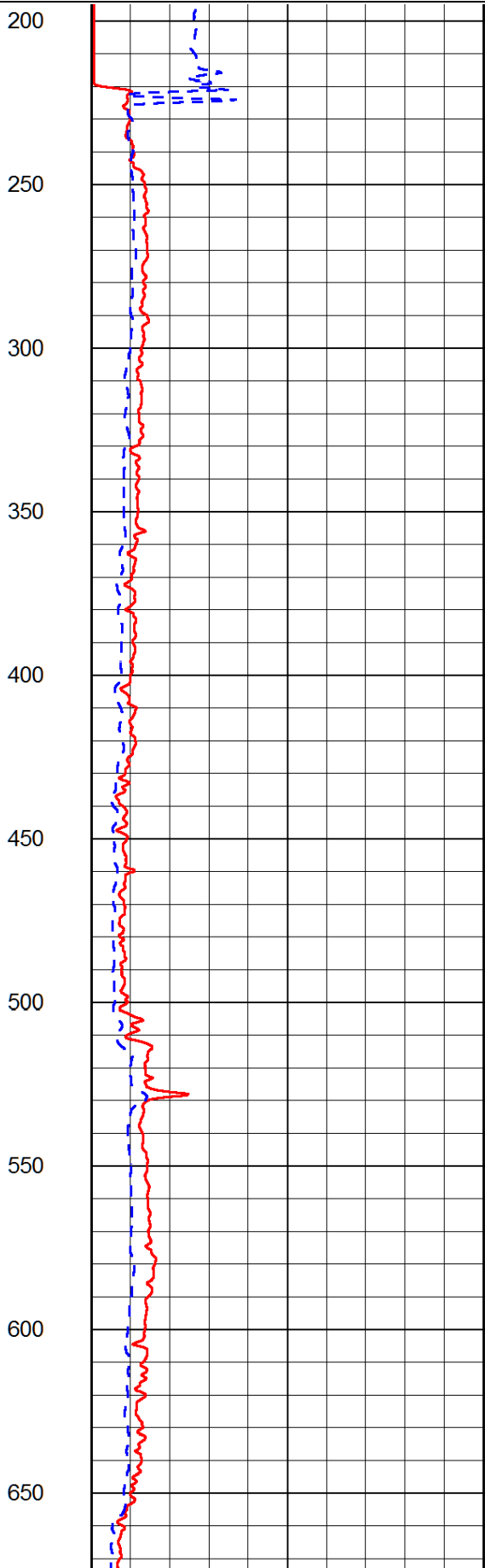
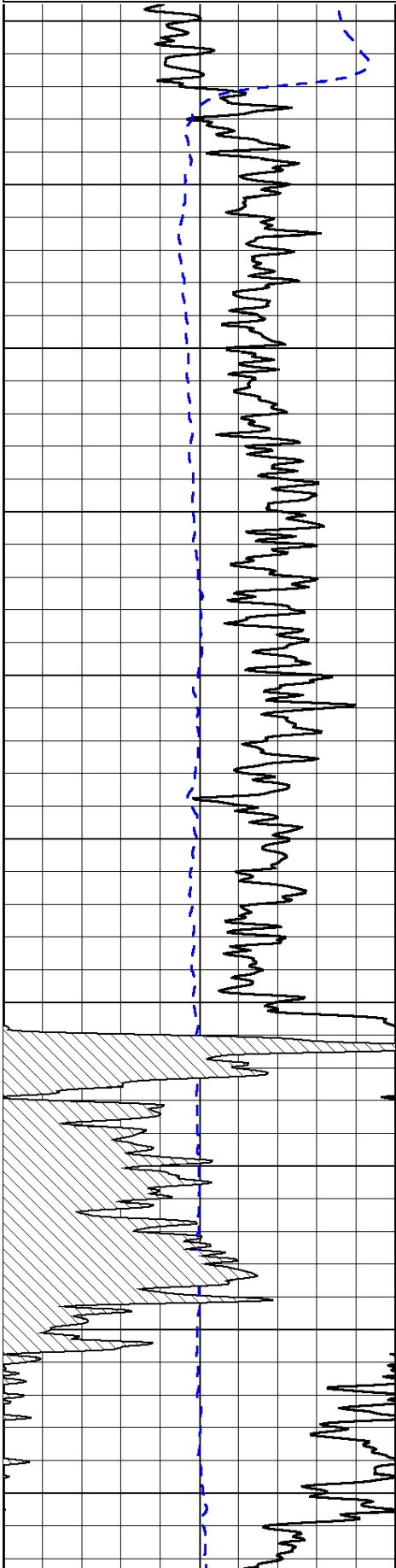
Thank you for using Log-Tech, Inc.
(785) 625-3858
Colby,
West on I-70 to Levant Exit,
North to Old Hwy 24, West to 8 Rd,
North to S Rd, 1 3/4 West,
South into

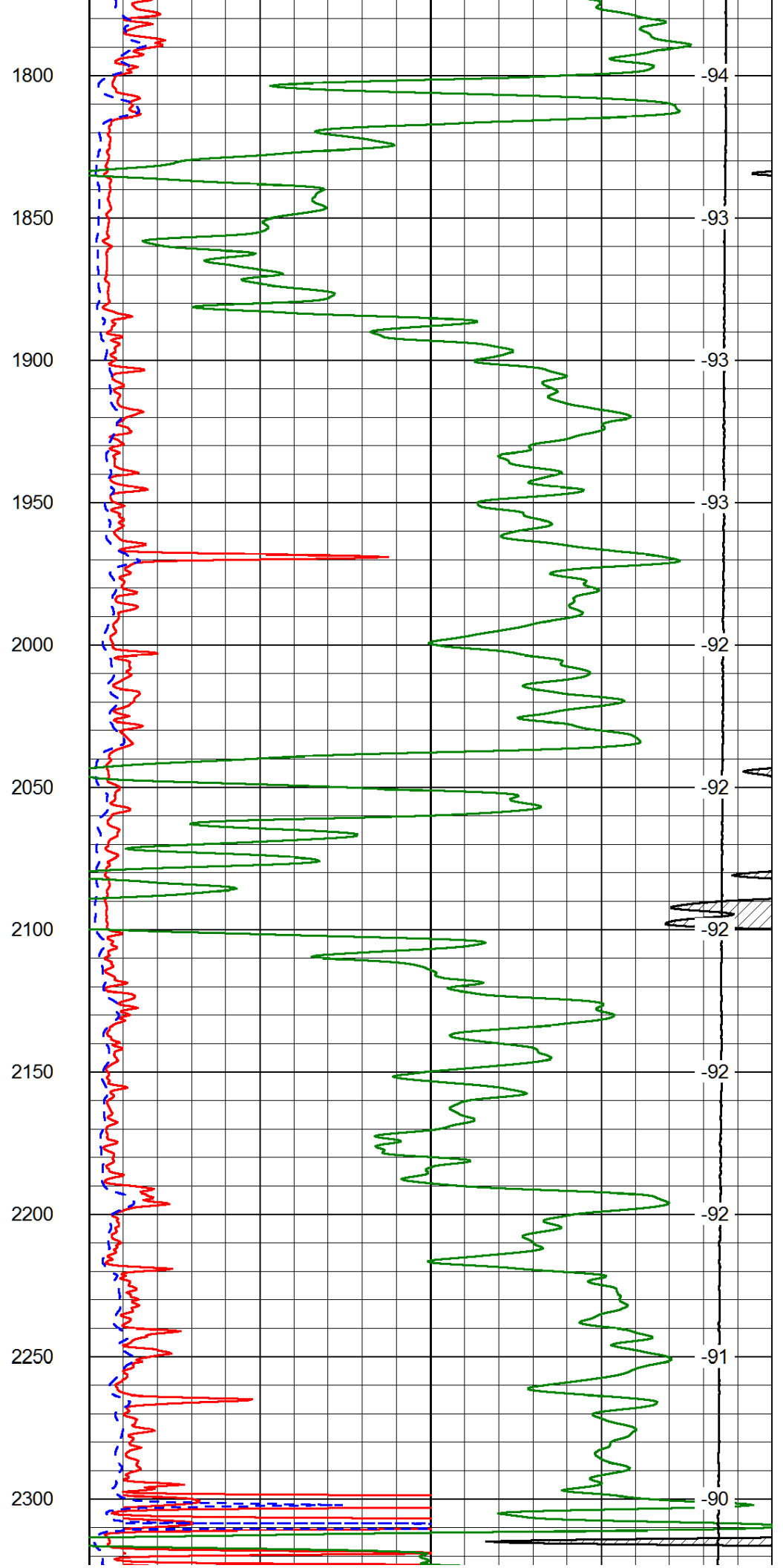
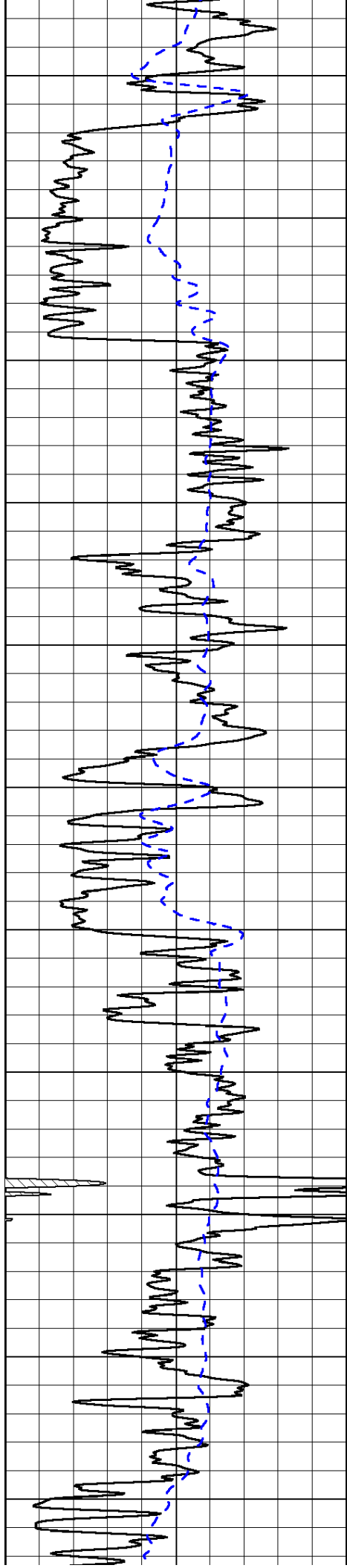
Database File: val_sta llc_1-1hd.db
Dataset Pathname: dil/vastkml
Presentation Format: dil2in
Dataset Creation: Sun Oct 12 21:41:50 2014
Charted by: Depth in Feet scaled 1:600

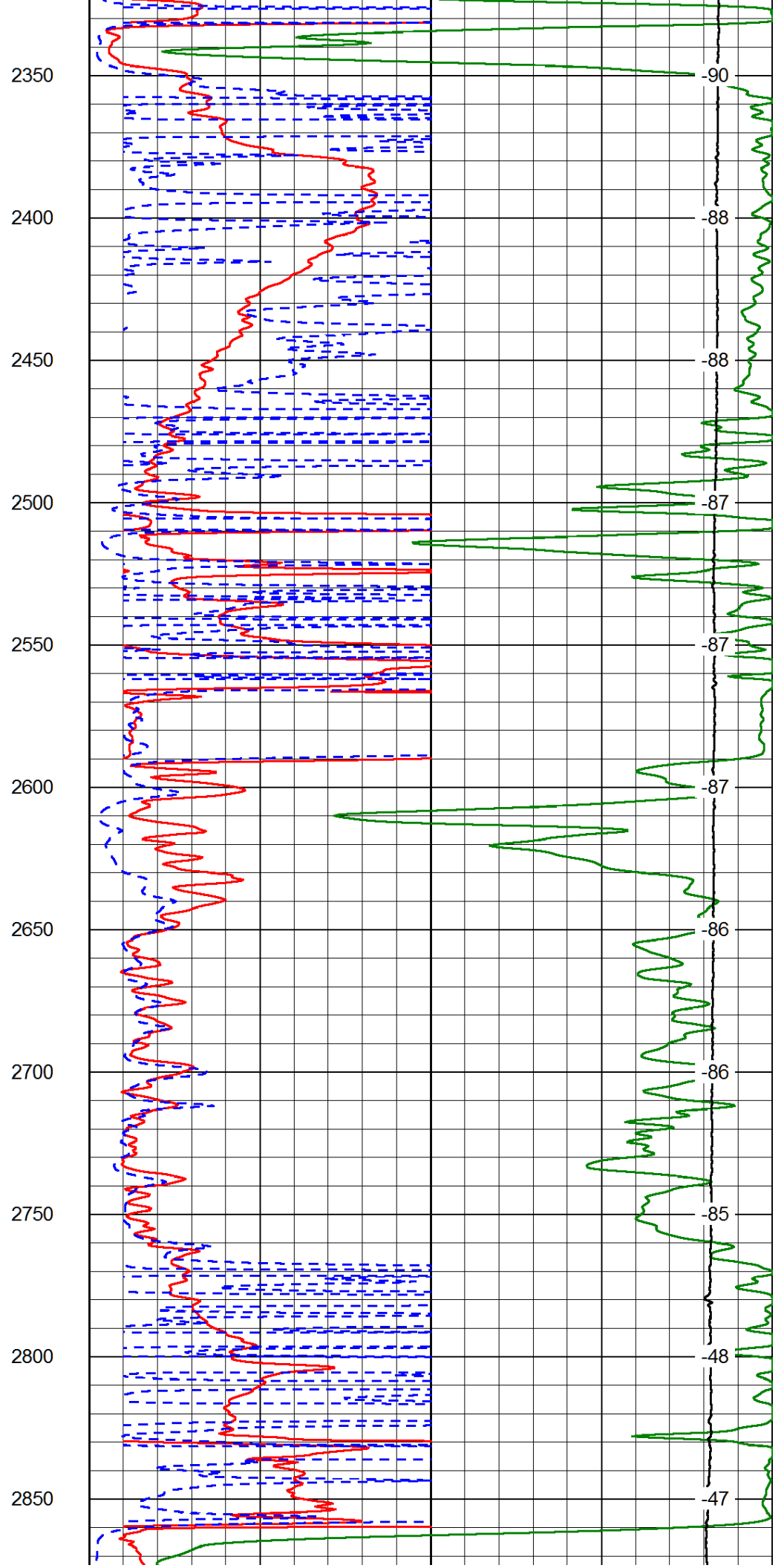
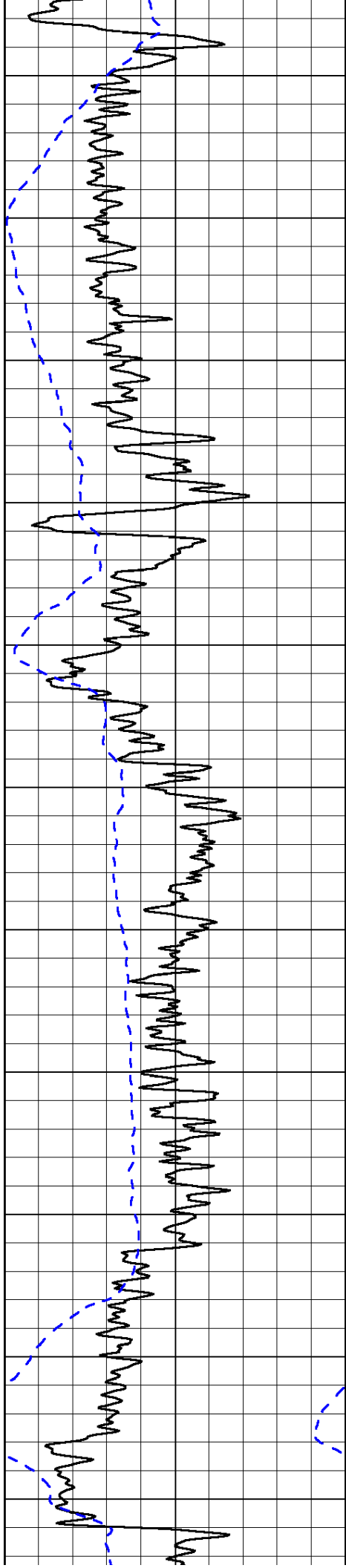
0	Gamma Ray	150
-200	SP (mV)	0

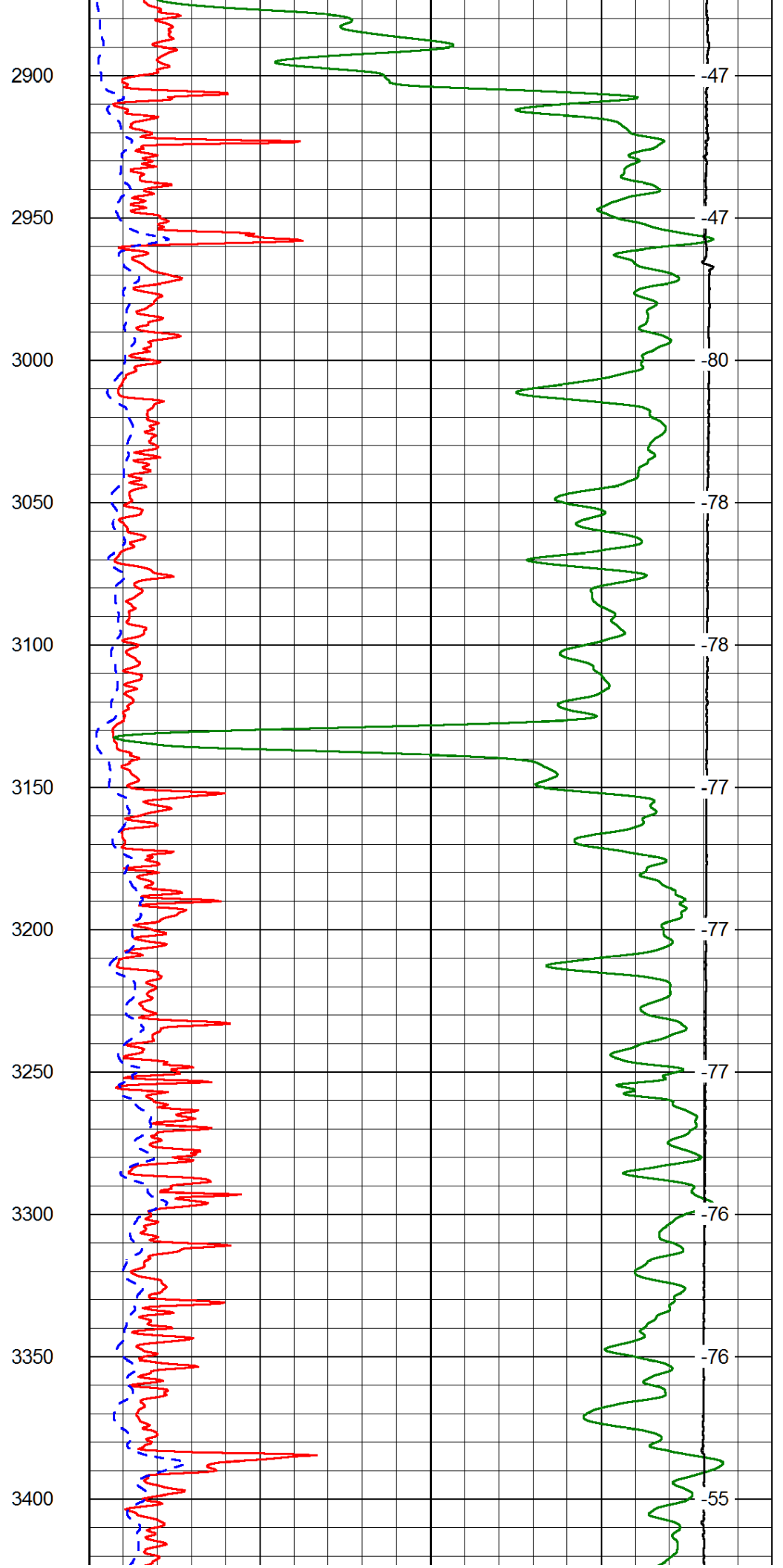
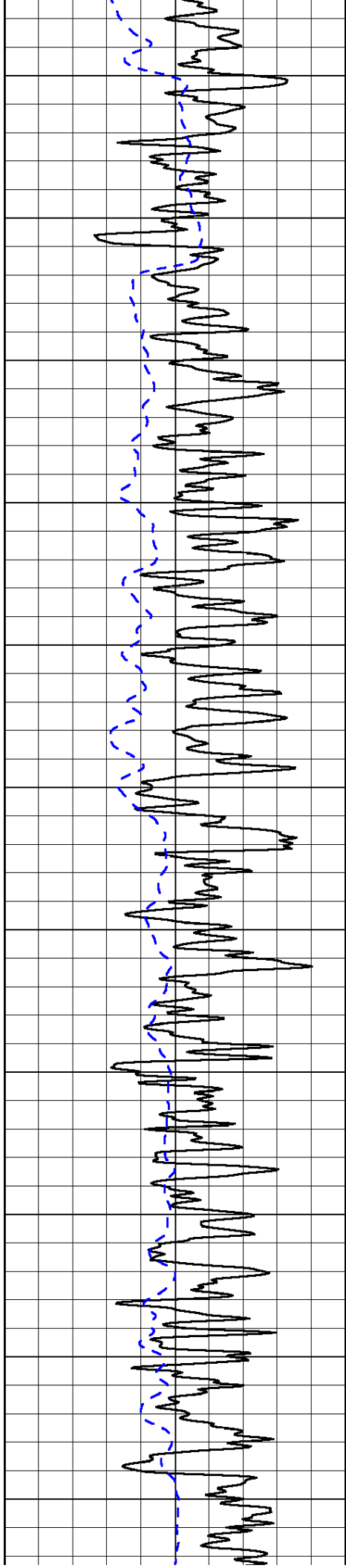
0	Shallow Resistivity	50
0	Deep Resistivity	50
1000	Conductivity	0
15000	Line Tension	0
50	Shallow Resistivity	500
50	Deep Resistivity	500

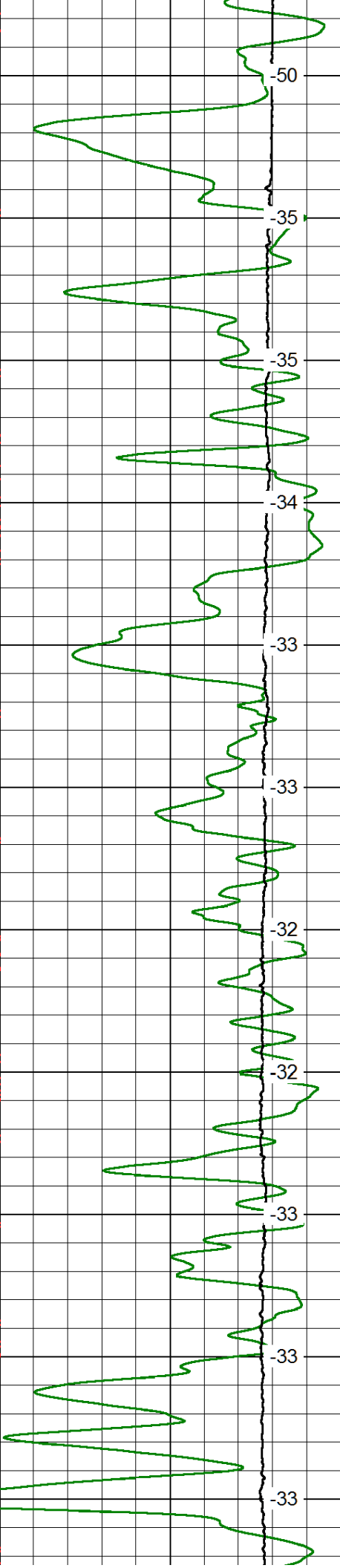
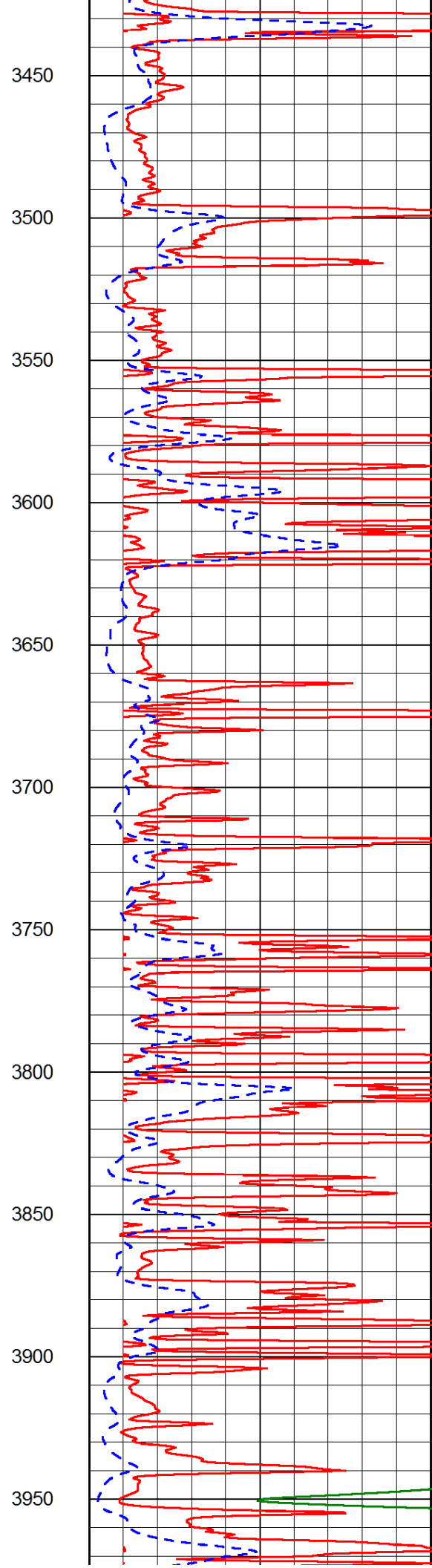
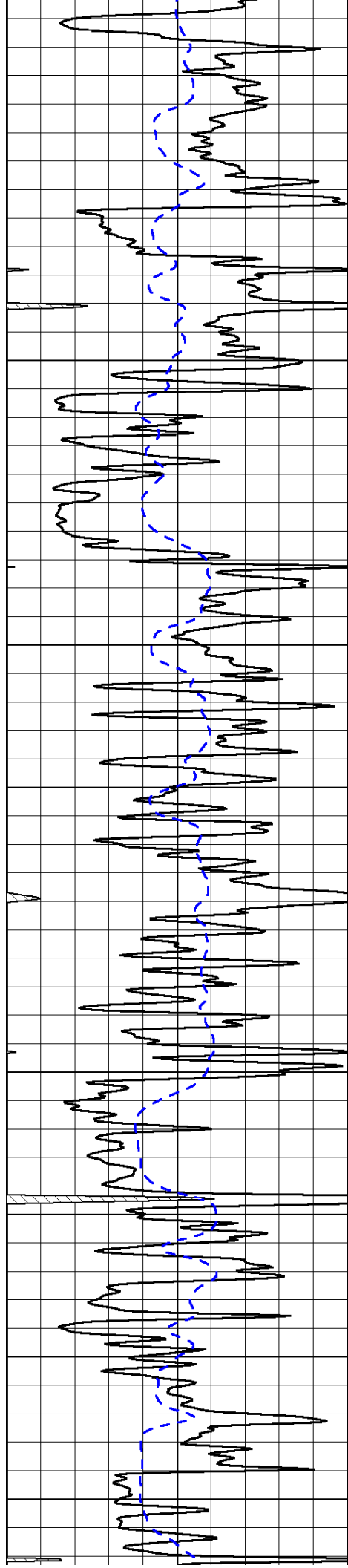
LSPD

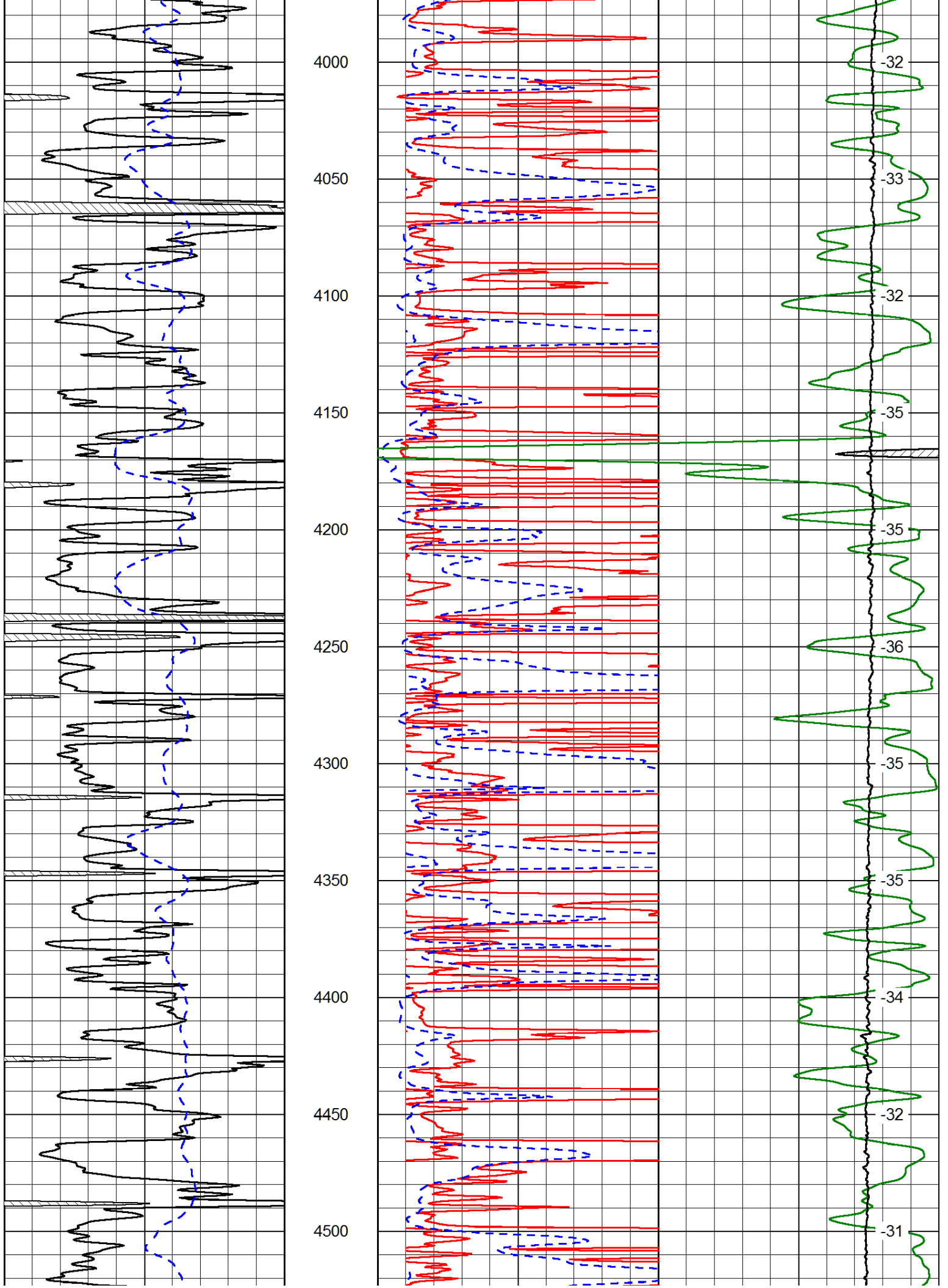


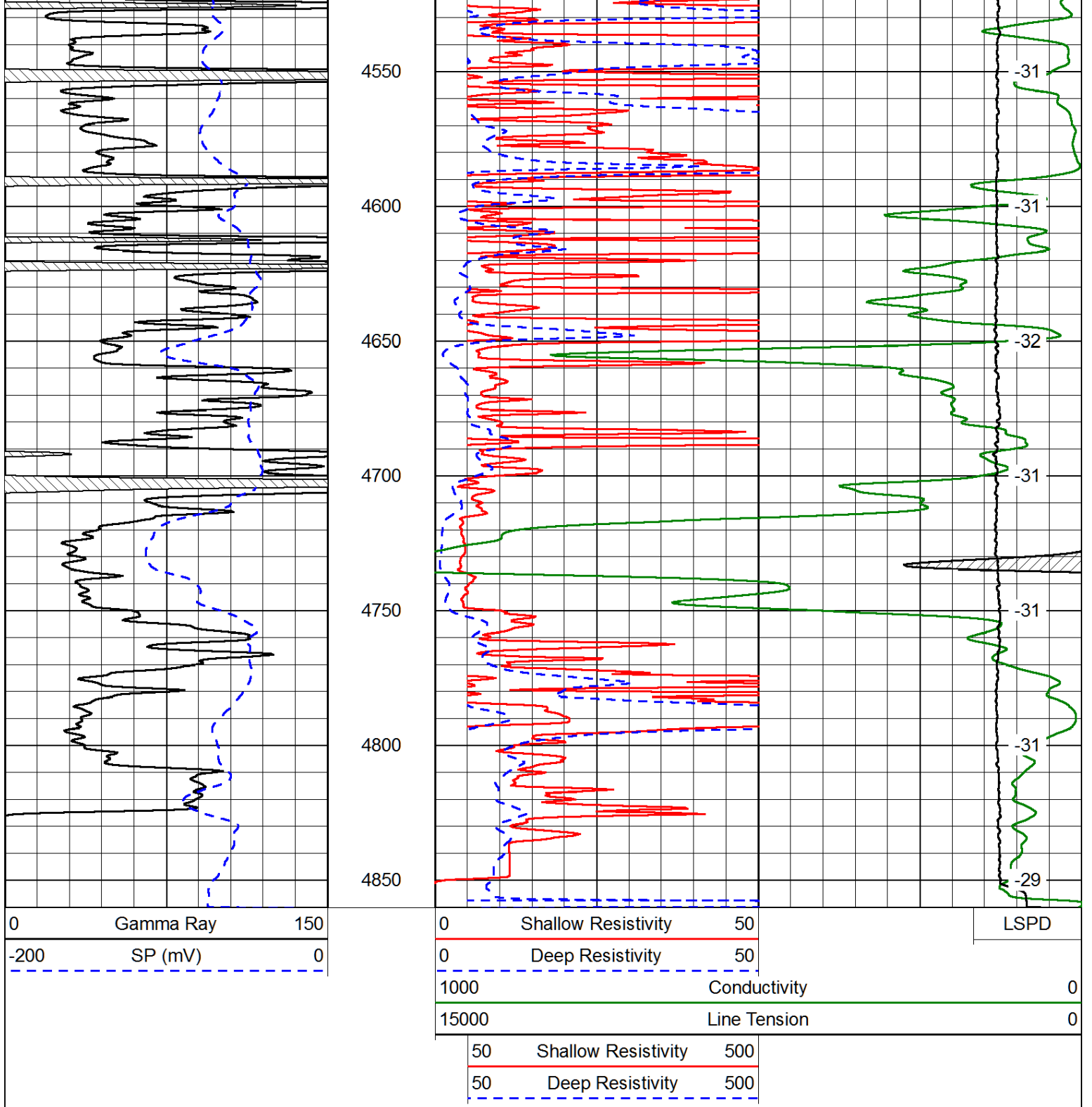




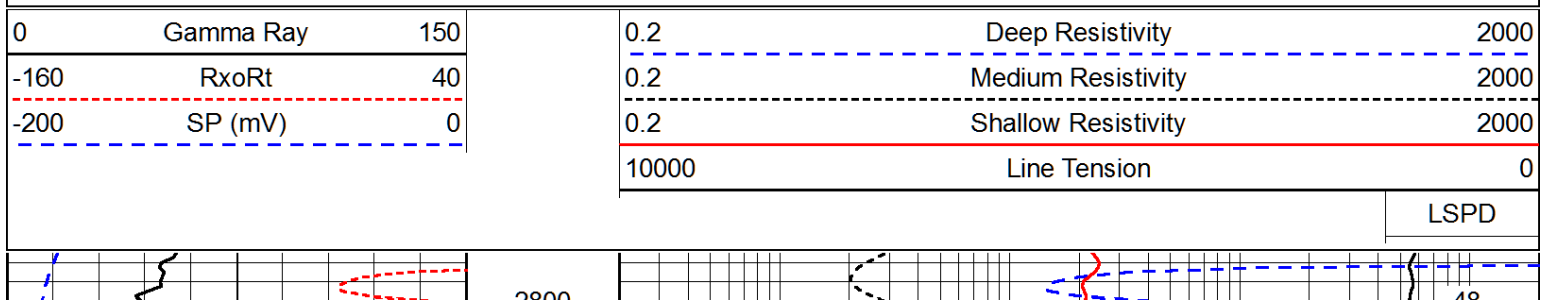


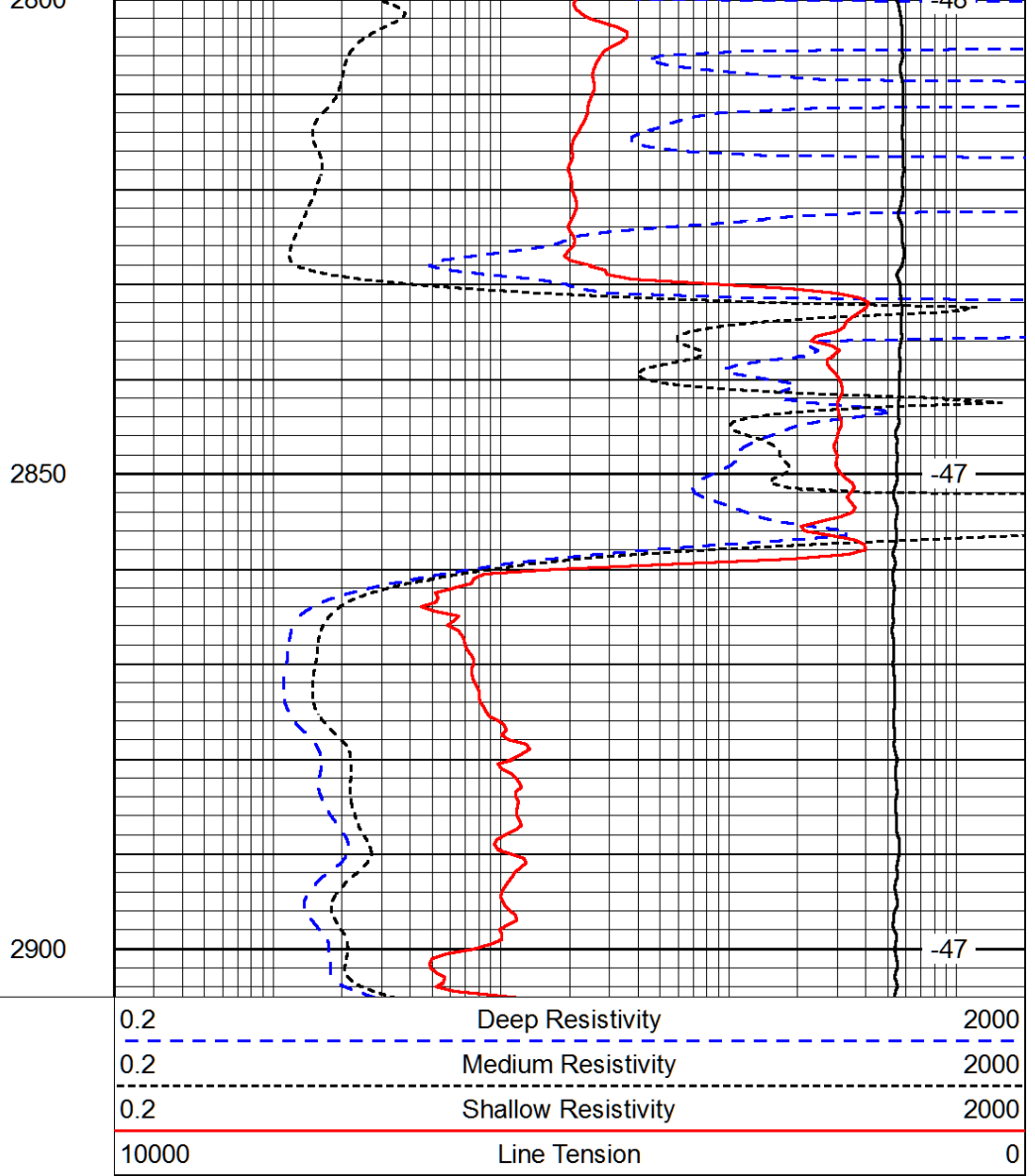
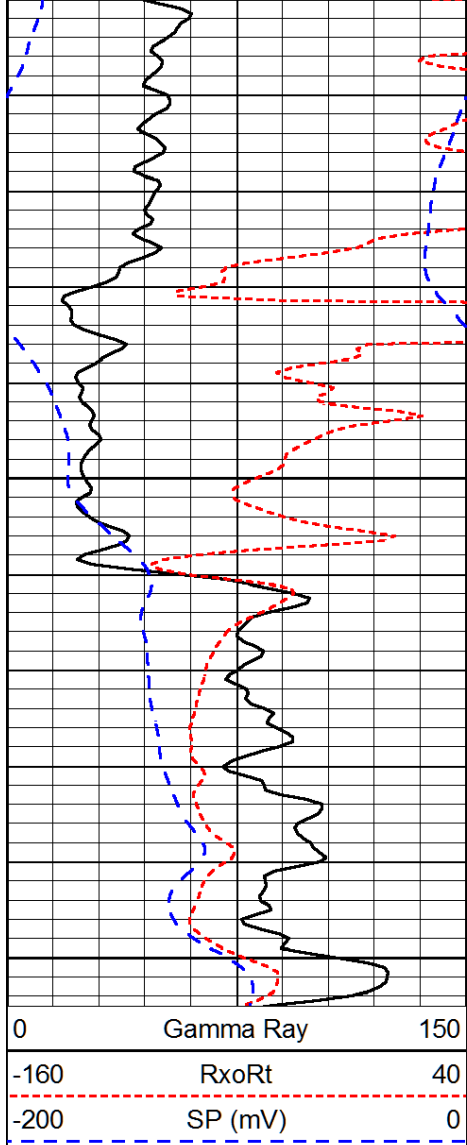






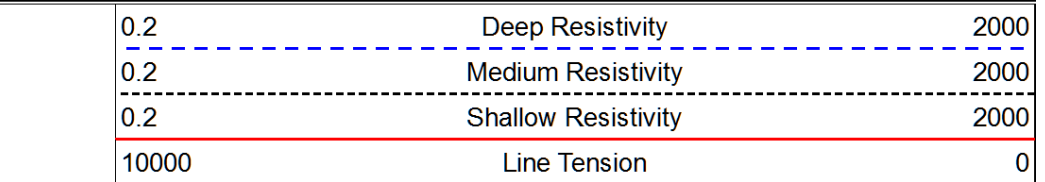
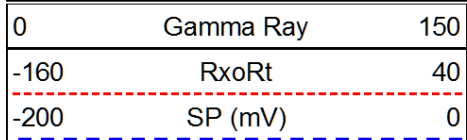
Database File: val_sta llc_1-1hd.db
 Dataset Pathname: dil/vastkml
 Presentation Format: dil
 Dataset Creation: Sun Oct 12 21:41:50 2014
 Charted by: Depth in Feet scaled 1:240



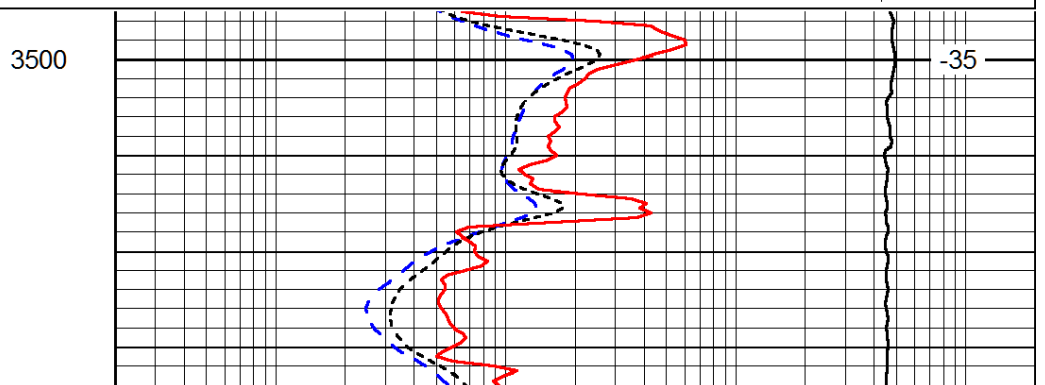
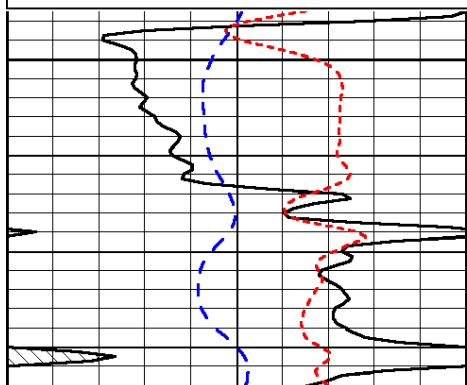


LSPD

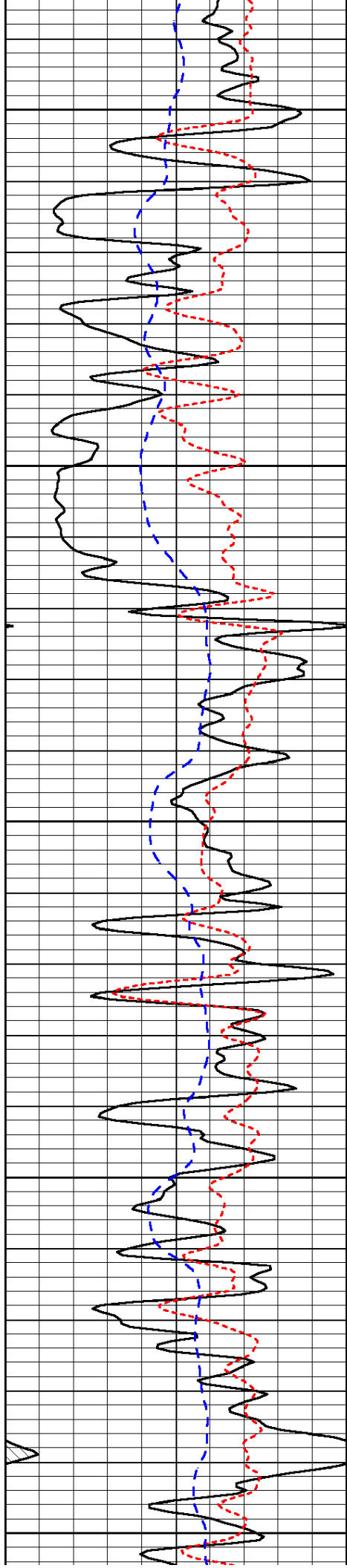
Database File: val_sta llc_1-1hd.db
 Dataset Pathname: dil/vastkml
 Presentation Format: dil
 Dataset Creation: Sun Oct 12 21:41:50 2014
 Charted by: Depth in Feet scaled 1:240



LSPD



-35



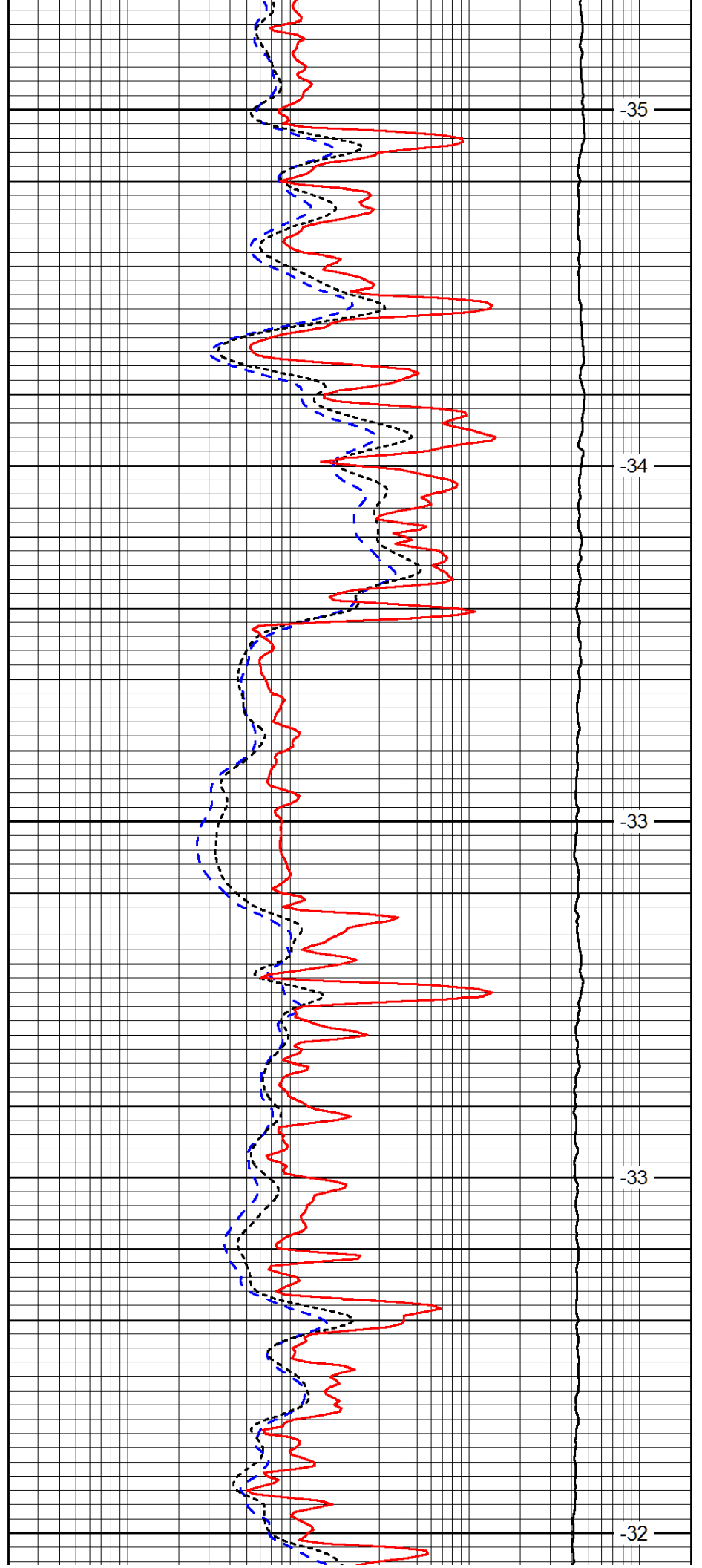
3550

3600

3650

3700

3750



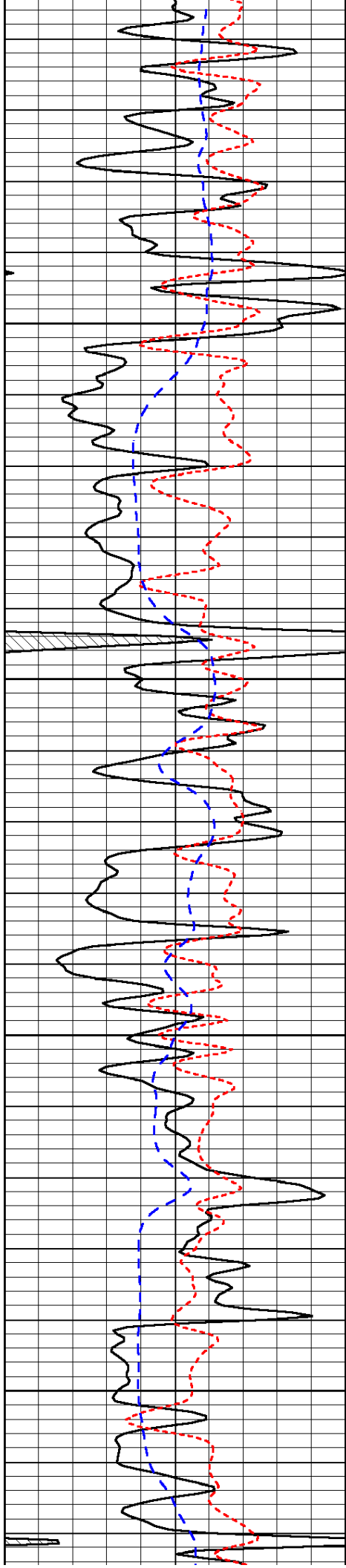
-35

-34

-33

-33

-32

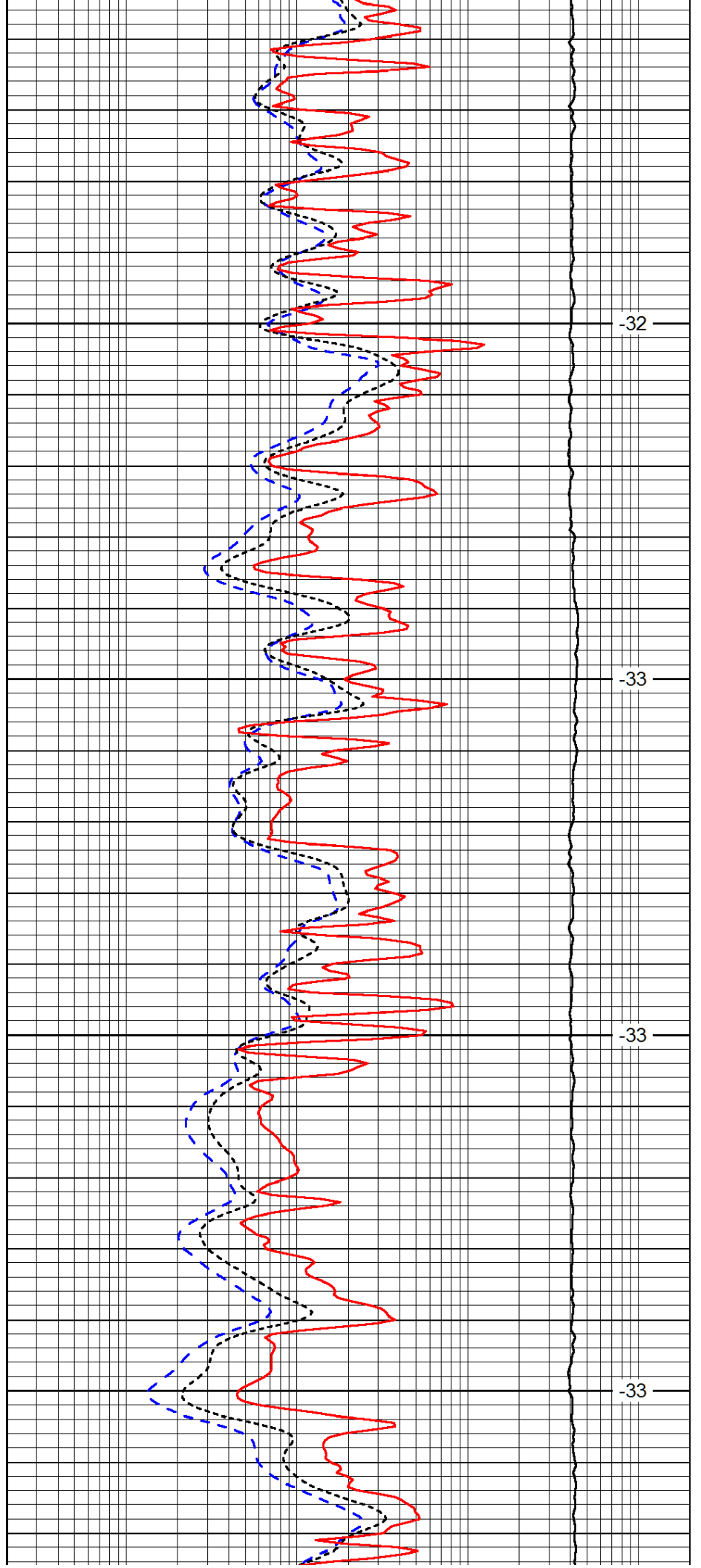


3800

3850

3900

3950

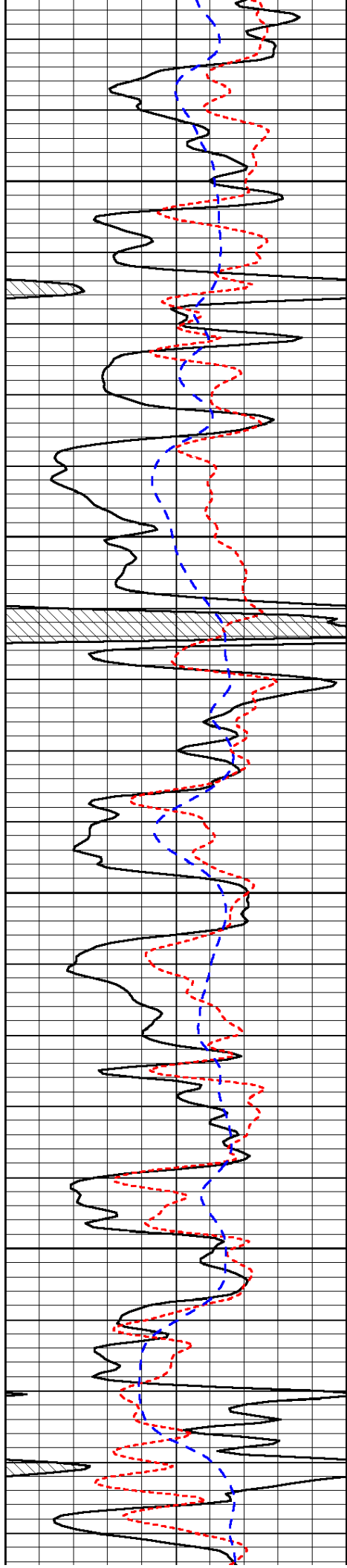


-32

-33

-33

-33

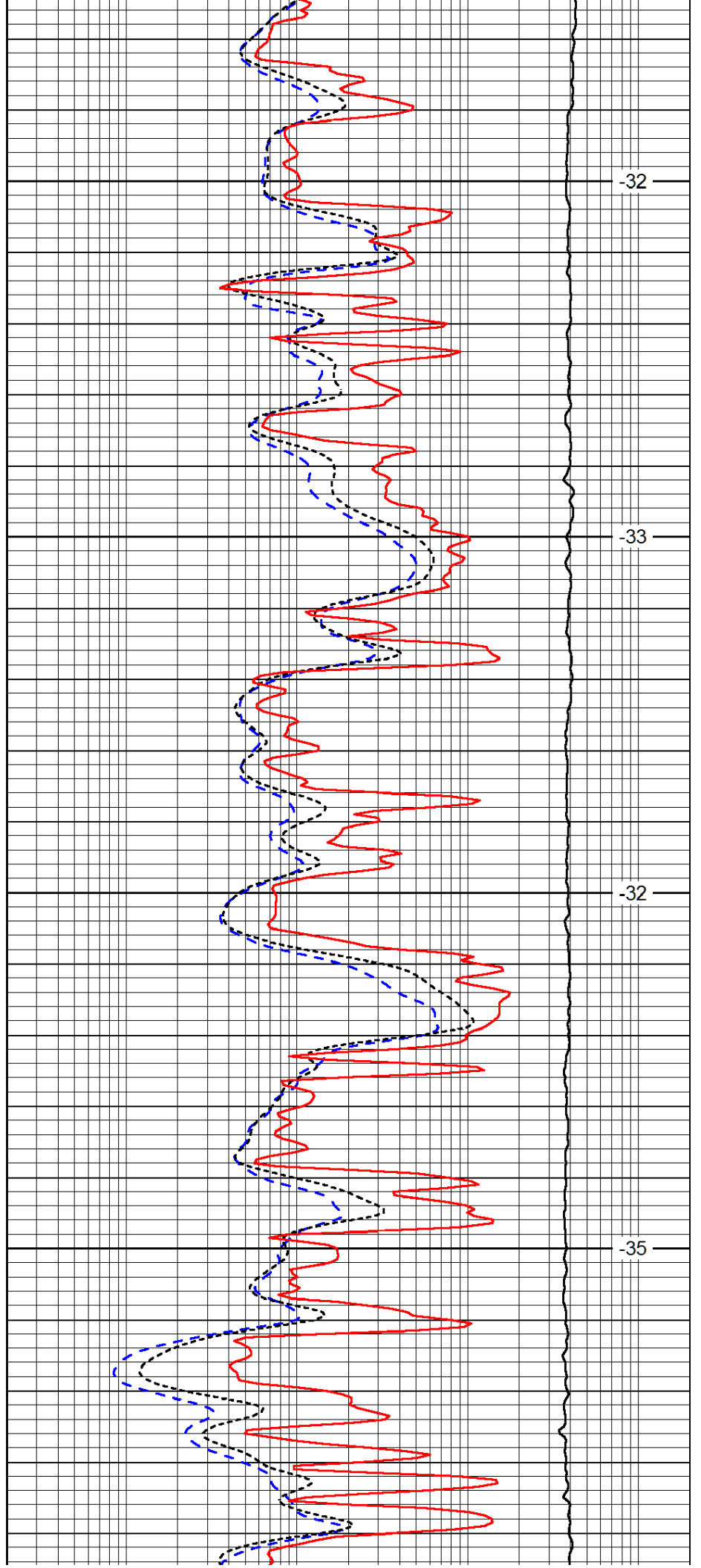


4000

4050

4100

4150

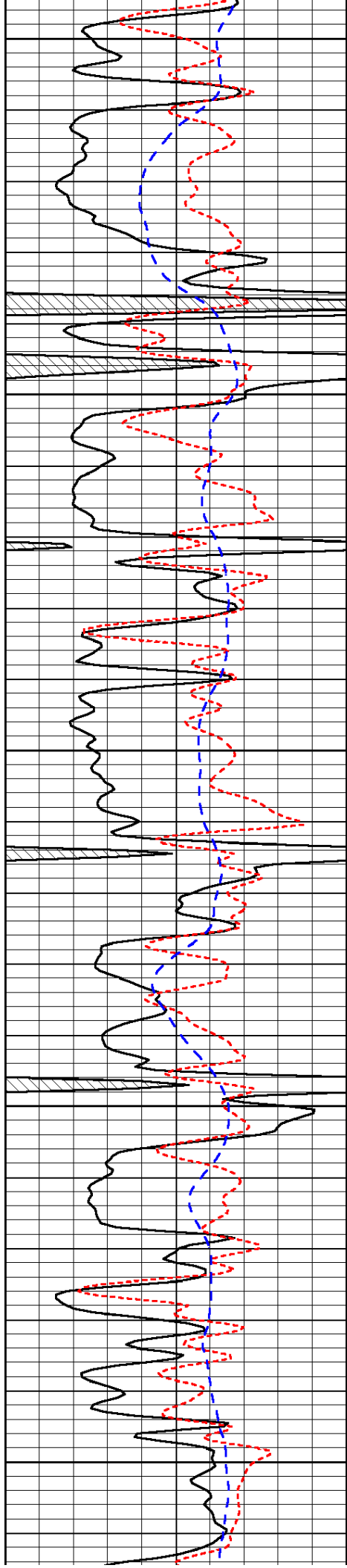


-32

-33

-32

-35



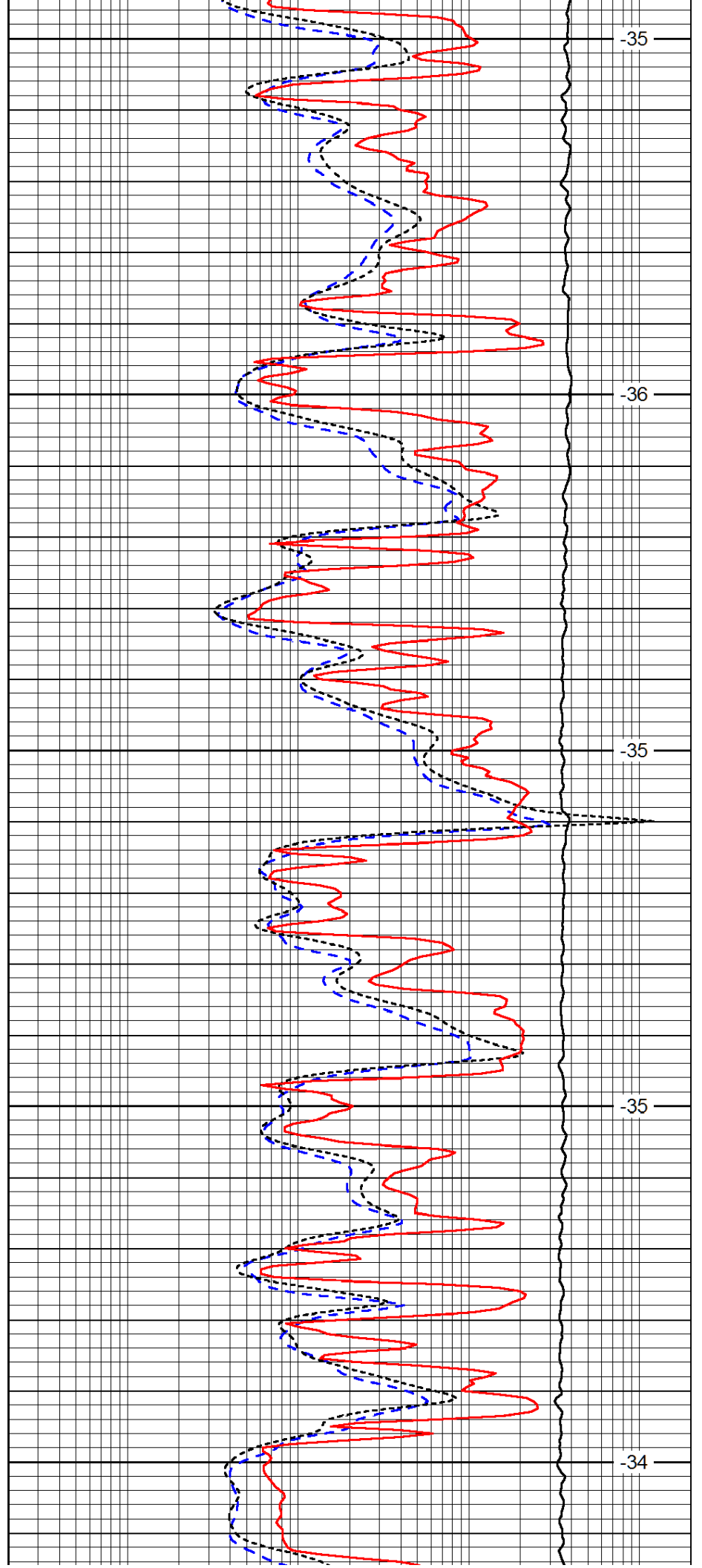
4200

4250

4300

4350

4400



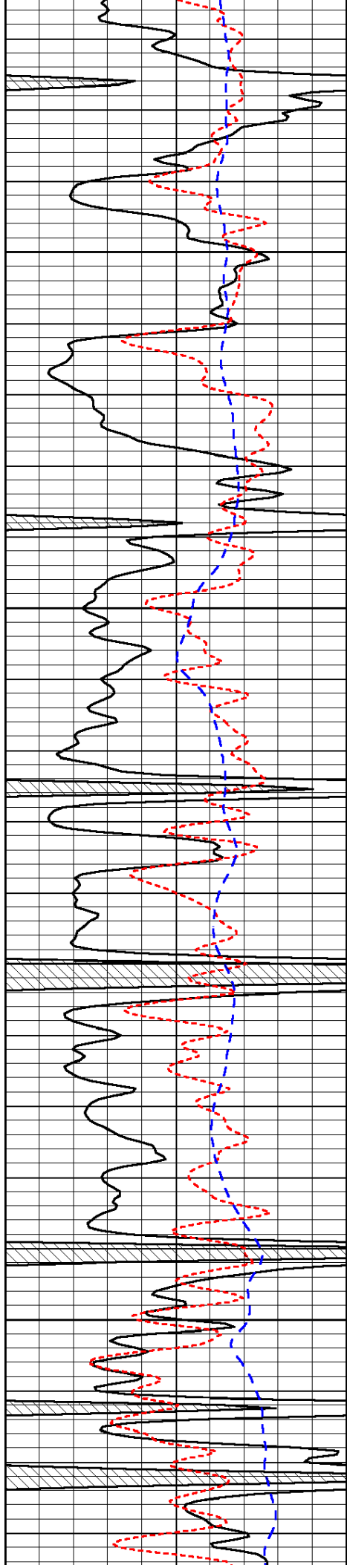
-35

-36

-35

-35

-34

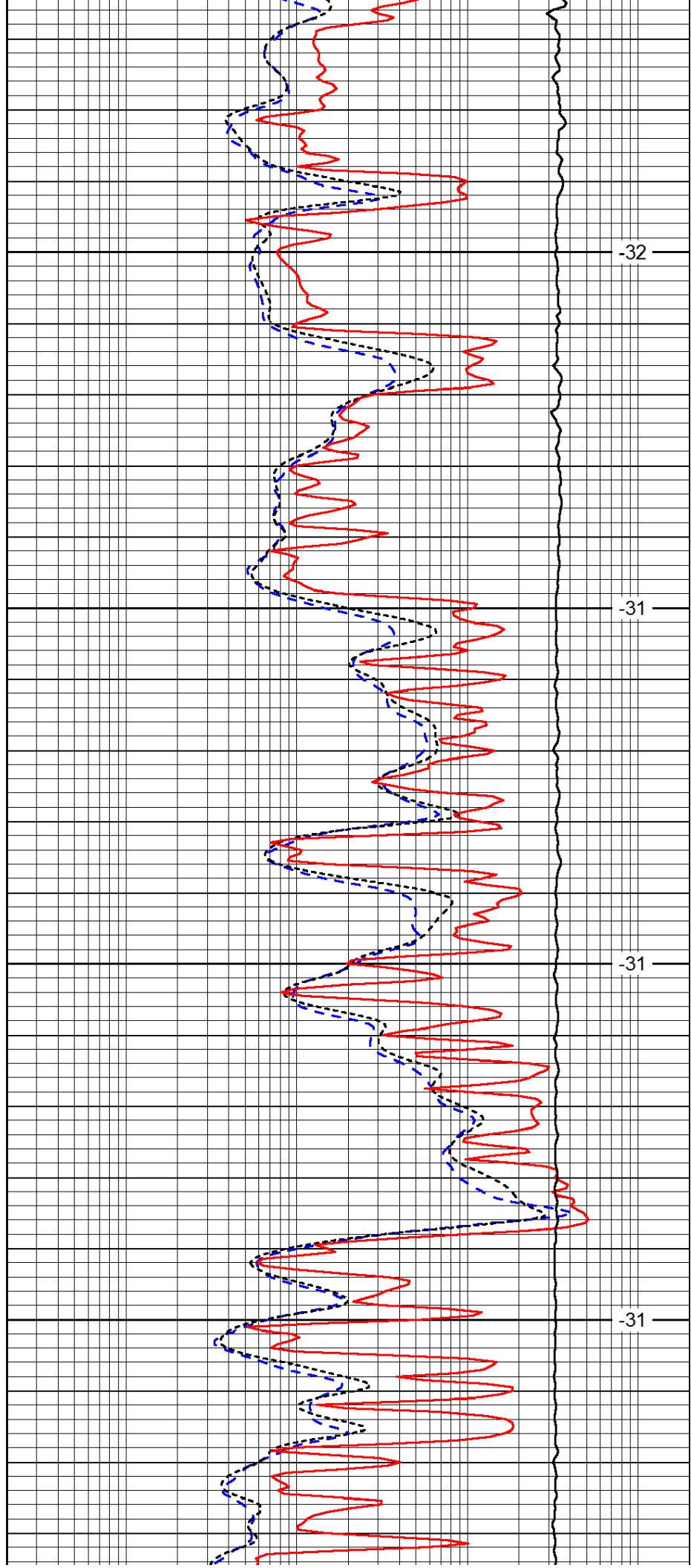


4450

4500

4550

4600

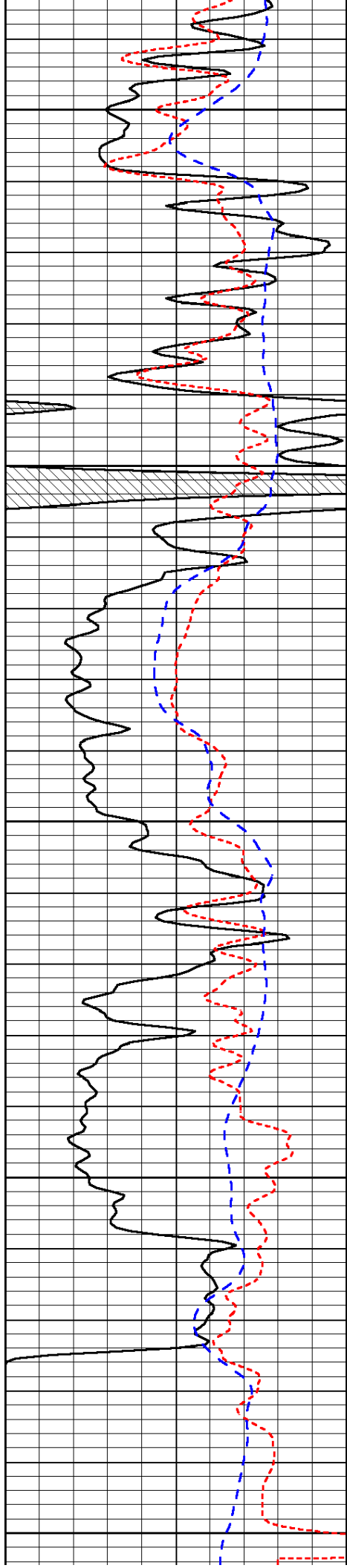


-32

-31

-31

-31



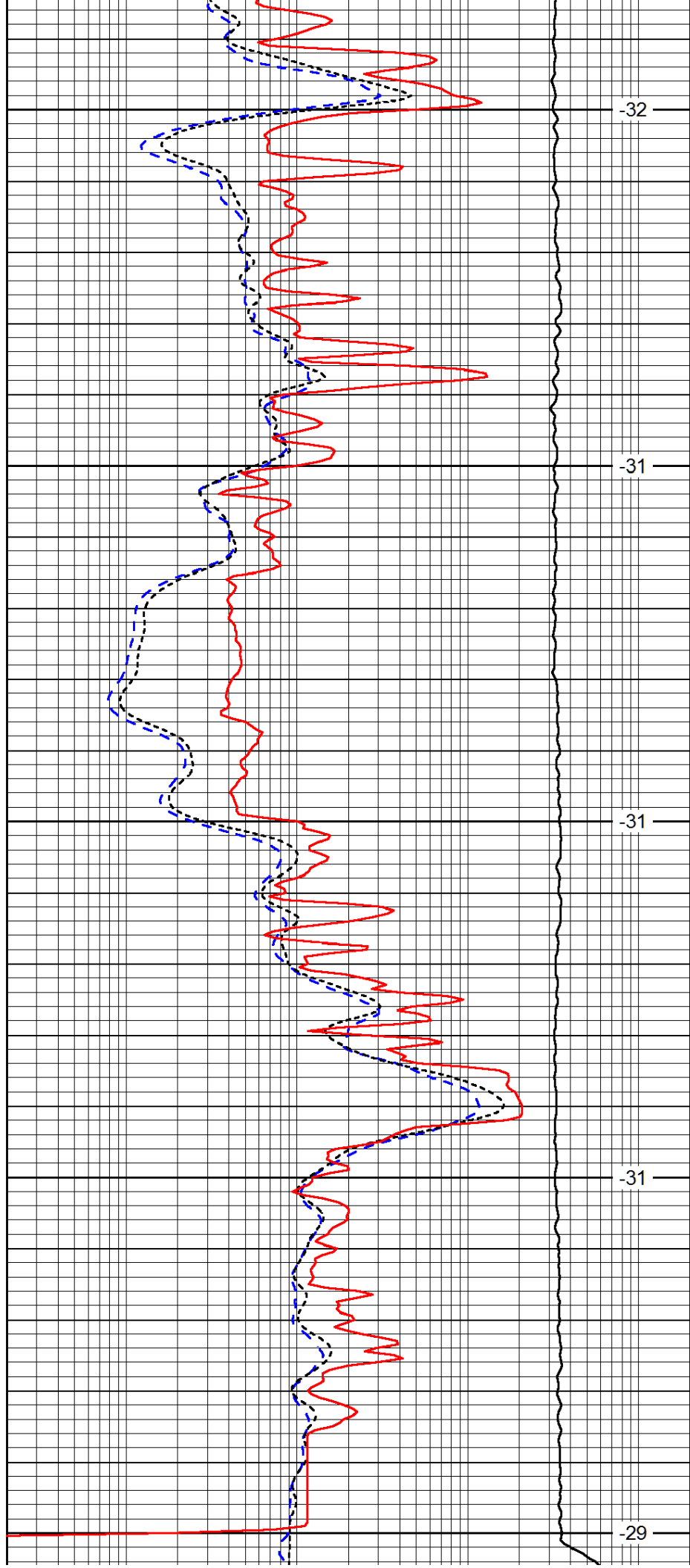
4650

4700

4750

4800

4850



-32

-31

-31

-31

-29

0	Gamma Ray	150
-160	RxoRt	40
-200	SP (mV)	0

0.2	Deep Resistivity	2000
0.2	Medium Resistivity	2000
0.2	Shallow Resistivity	2000
10000	Line Tension	0

LSPD