



Pioneer Energy Services

Microresistivity Log

Company Val Energy, Inc.
Well STA LLC #1-1
Field Wildcat
County Thomas **State** Kansas
Location 1574' FSL & 1295' FWL
Sec: 1 **Twp:** 8S **Rge:** 36W

Permanent Datum Ground Level
Log Measured From Kelly Bushing
Drilling Measured From Kelly Bushing
Elevation 3283
10 Ft. Above Perm. Datum

Other Services
 CNL/CDL
 DIL
Elevation
 K.B. 3293
 D.F. G.I.L. 3283

API No.	15-193-20928-00-00
Date	10/12/2014
Run Number	One
Depth Driller	4850
Depth Logger	4852
Bottom Logged Interval	4851
Top Log Interval	3500
Casing Driller	8.625 @ 223
Casing Logger	220
Bit Size	7.875
Type Fluid in Hole	Chemical
Salinity, ppm CL	6000
Density / Viscosity	9.1 63
pH / Fluid Loss	10.5 8.0
Source of Sample	Flowline
Rm @ Meas. Temp	0.50 @ 60
Rmf @ Meas. Temp	0.38 @ 60
Rmc @ Meas. Temp	0.68 @ 60
Source of Rmf / Rmc	Charts
Rm @ BHT	0.24 @ 125
Operating Rig Time	3 1/2 Hours
Max Rec. Temp. F	125
Equipment Number	91
Location	Hays
Recorded By	D. Schmidt
Witnessed By	Harley Sayles

<<< Fold Here >>>

All interpretations are opinions based on inferences from electrical or other measurements and we cannot and do not guarantee the accuracy or correctness of any interpretation, and we shall not, except in the case of gross or willful negligence on our part, be liable or responsible for any loss, costs, damages, or expenses incurred or sustained by anyone resulting from any interpretation made by any of our officers, agents or employees. These interpretations are also subject to our general terms and conditions set out in our current Price Schedule.

Comments

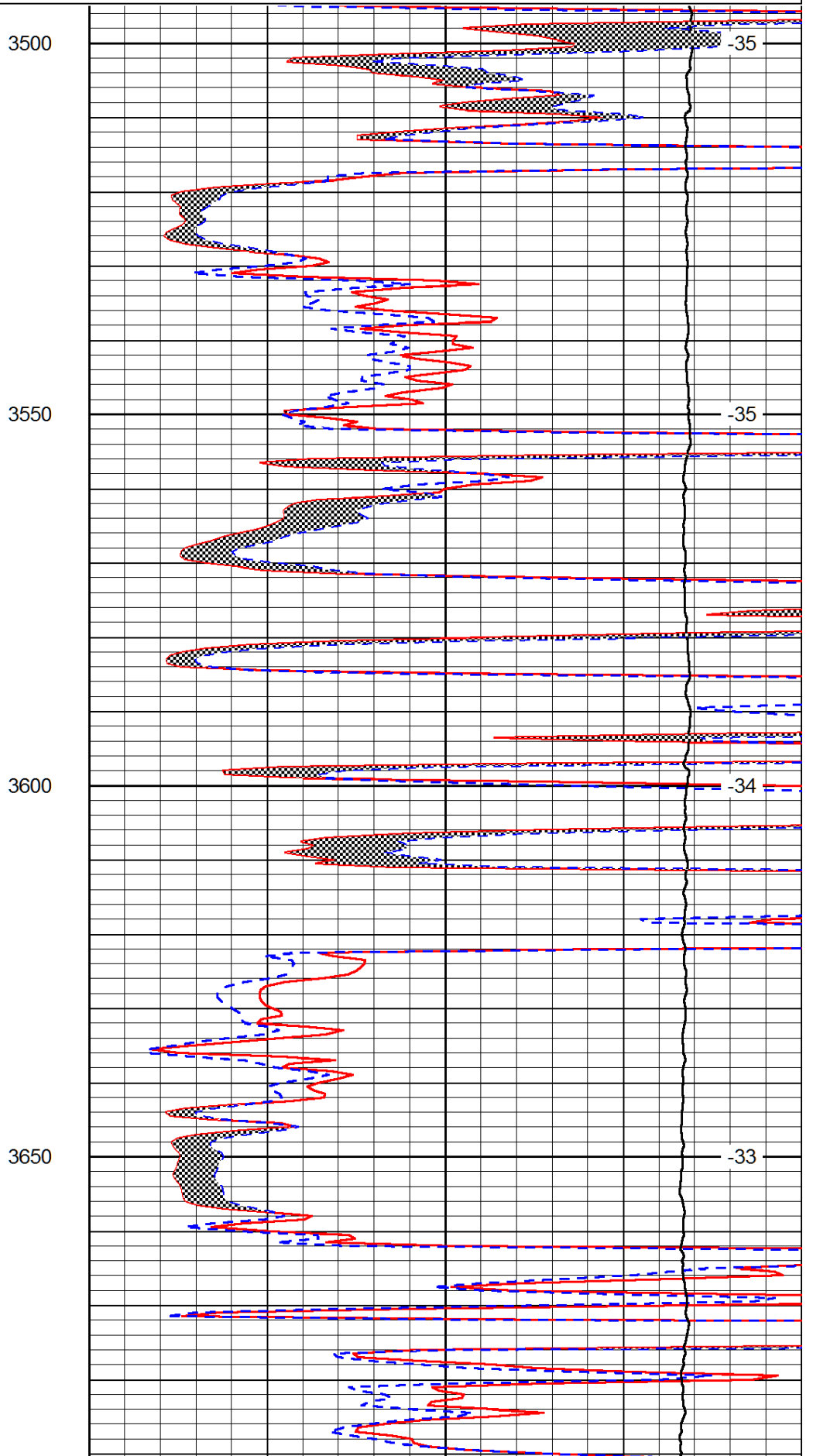
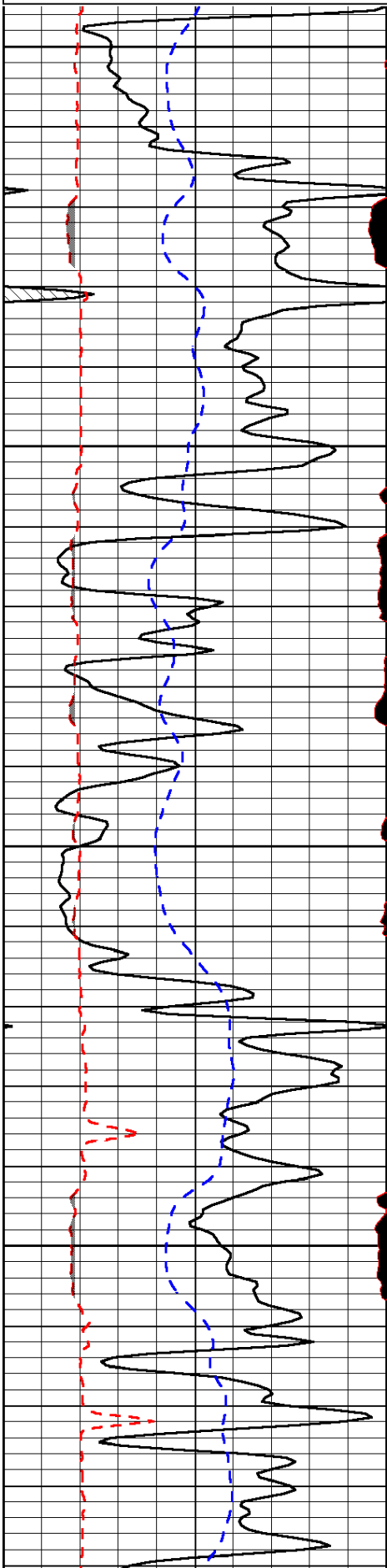
Thank you for using Log-Tech, Inc.
 (785) 625-3858
 Colby,
 West on I-70 to Levant Exit,
 North to Old Hwy 24, West to 8 Rd,
 North to S Rd, 1 3/4 West,
 South into

Database File: val_sta llc_1-1hd.db
 Dataset Pathname: dil/vastkml
 Presentation Format: micro
 Dataset Creation: Sun Oct 12 21:41:50 2014
 Charted by: Depth in Feet scaled 1:240

0	Gamma Ray	150
6	MCAL (GAPI)	16
2.875	Mud Cake (GAPI)	7.875
-200	SP (mV)	0

0	Micro Inverse 1 X 1	40
0	Micro Normal 2"	40
10000	Line Weight	0

LSPD



3500

3550

3600

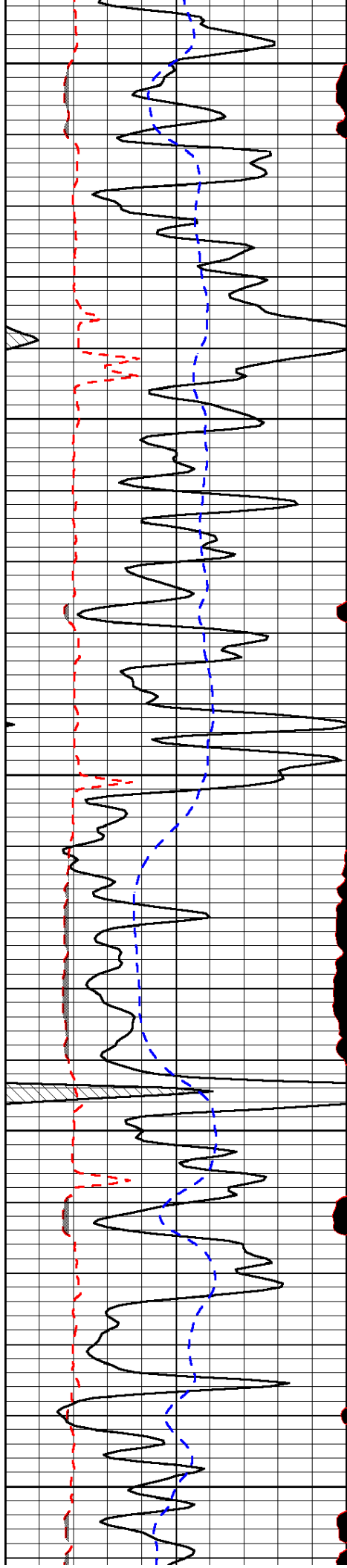
3650

-35

-35

-34

-33



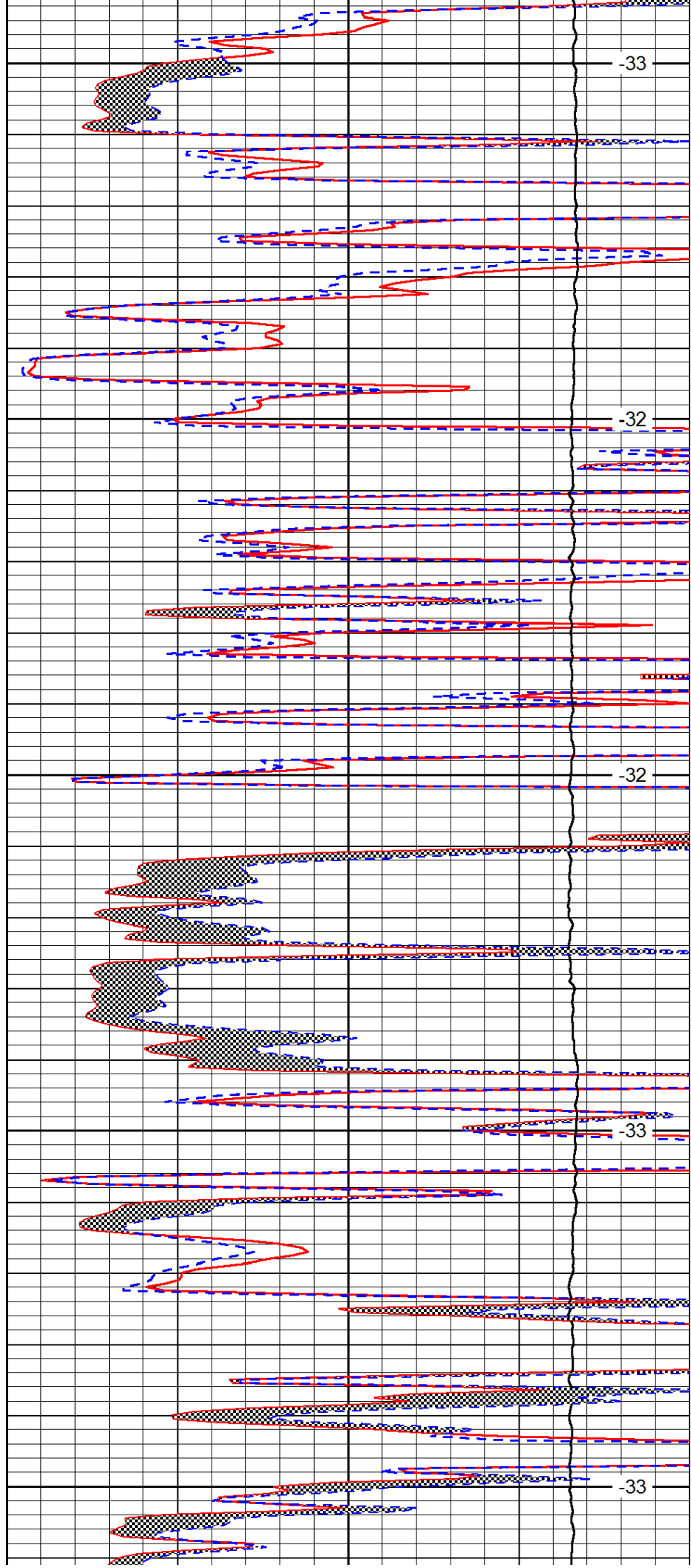
3700

3750

3800

3850

3900



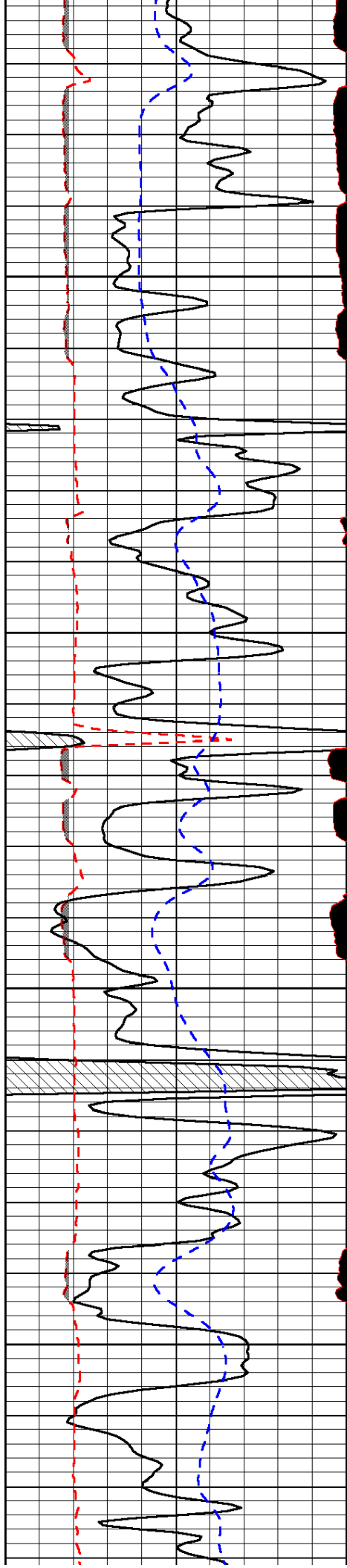
-33

-32

-32

-33

-33

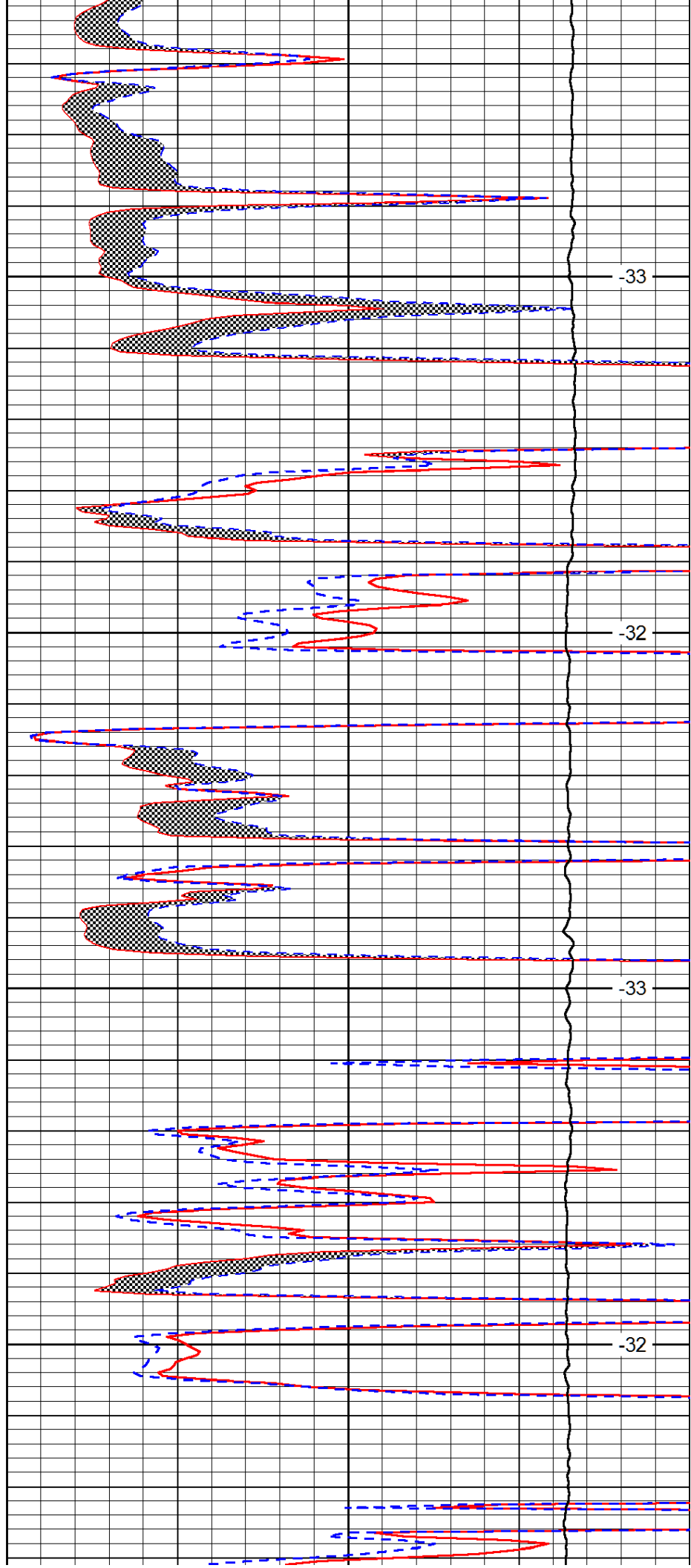


3950

4000

4050

4100

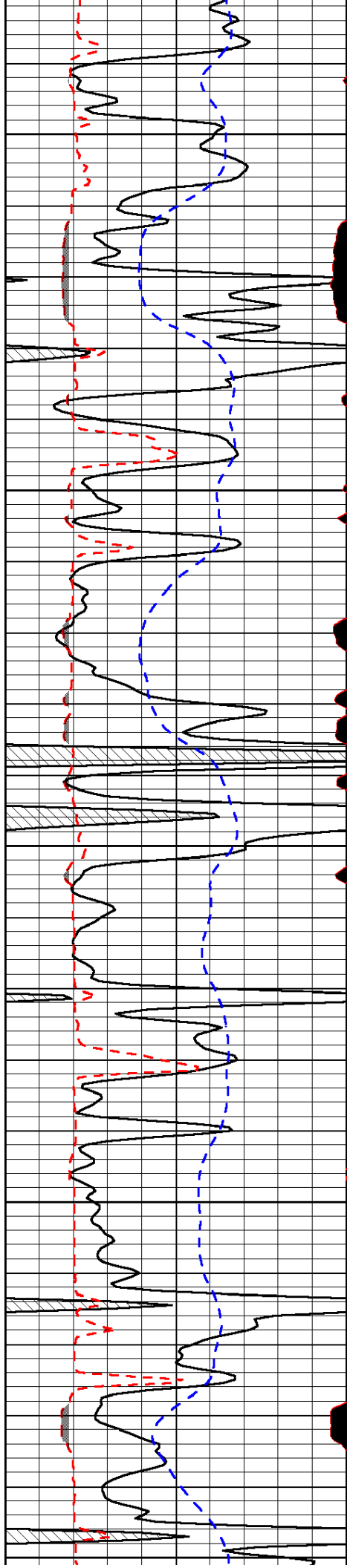


-33

-32

-33

-32



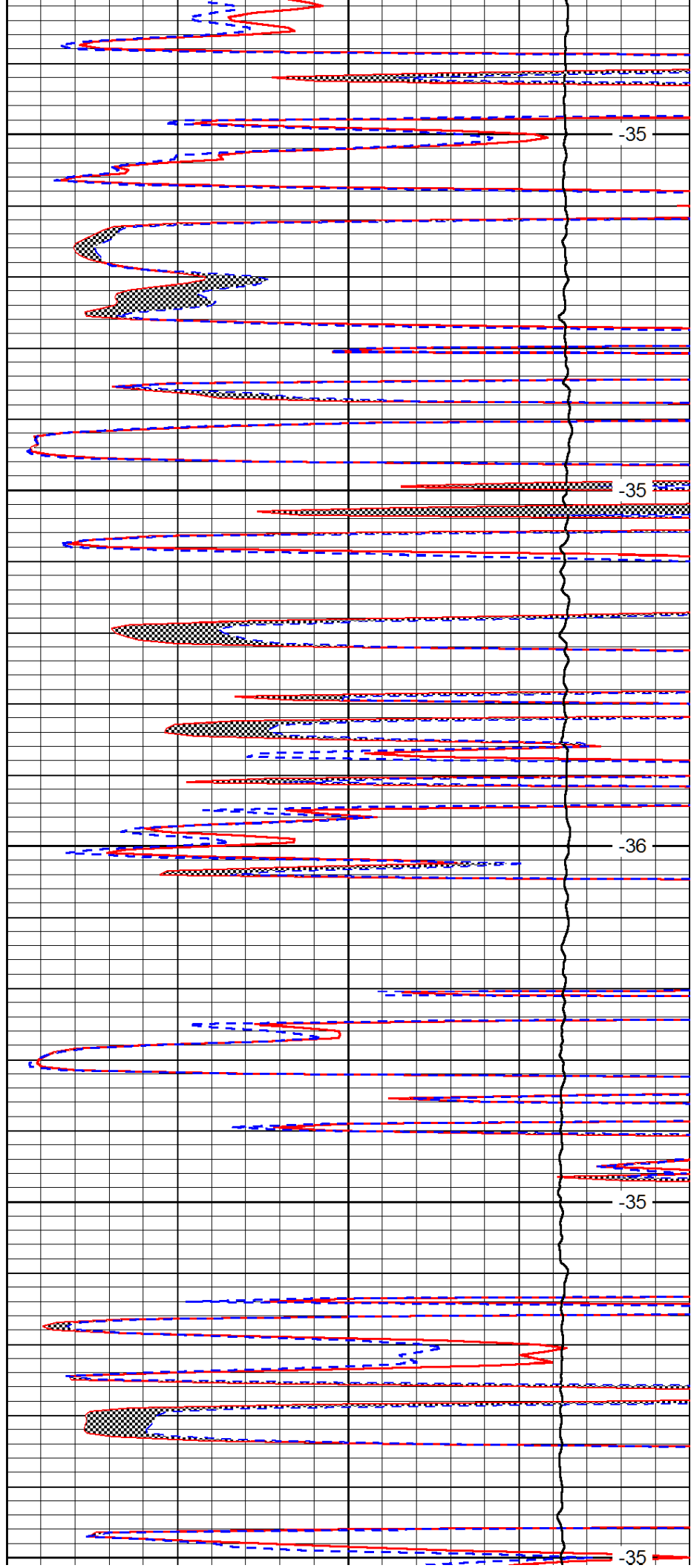
4150

4200

4250

4300

4350



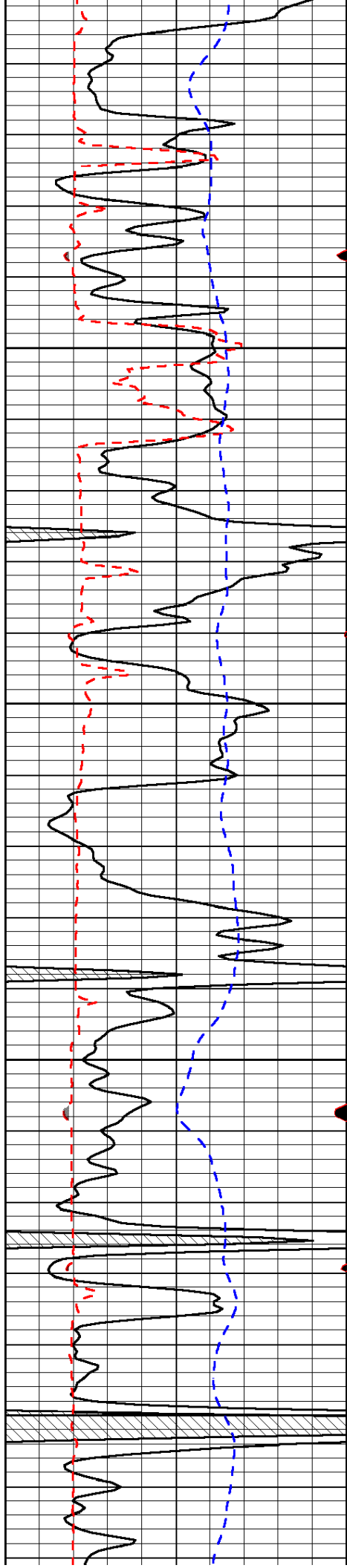
-35

-35

-36

-35

-35

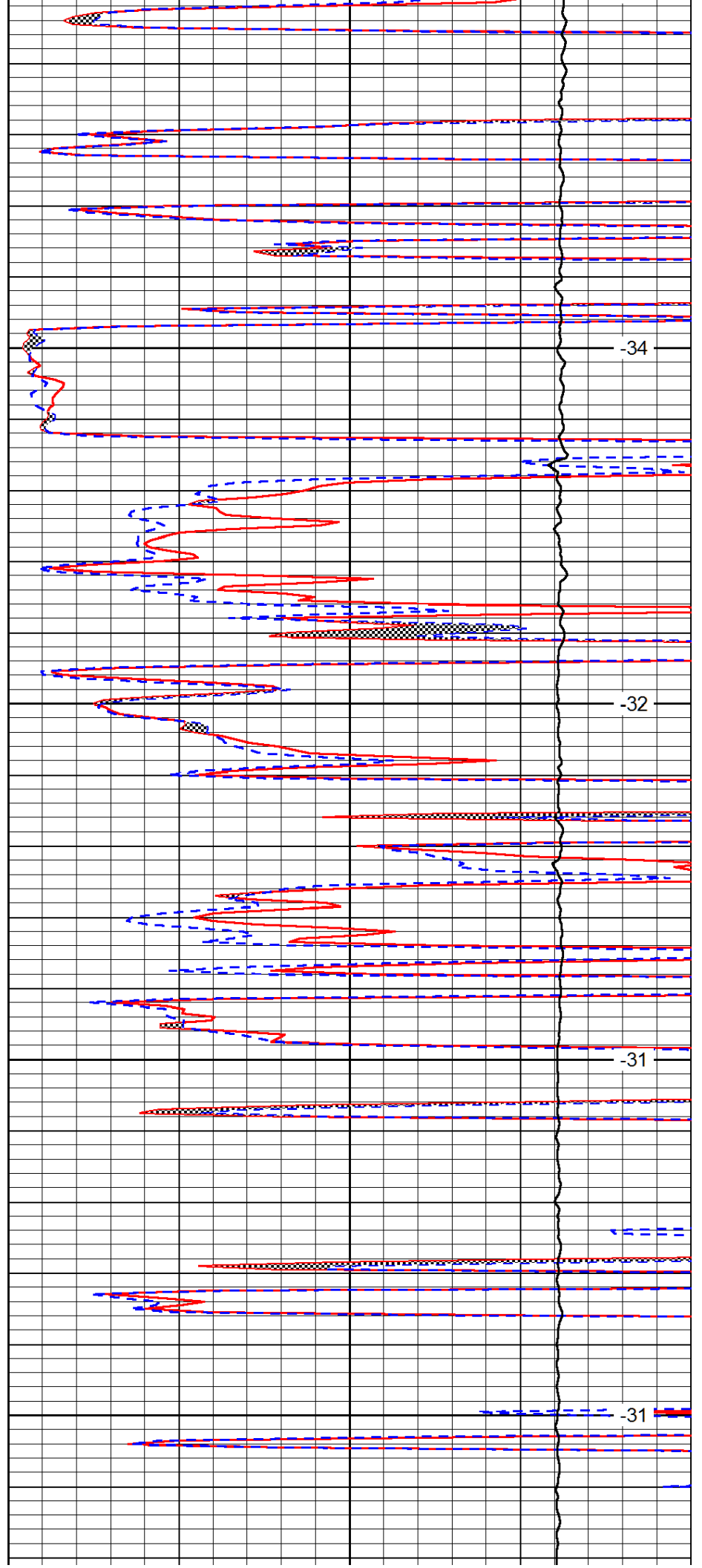


4400

4450

4500

4550

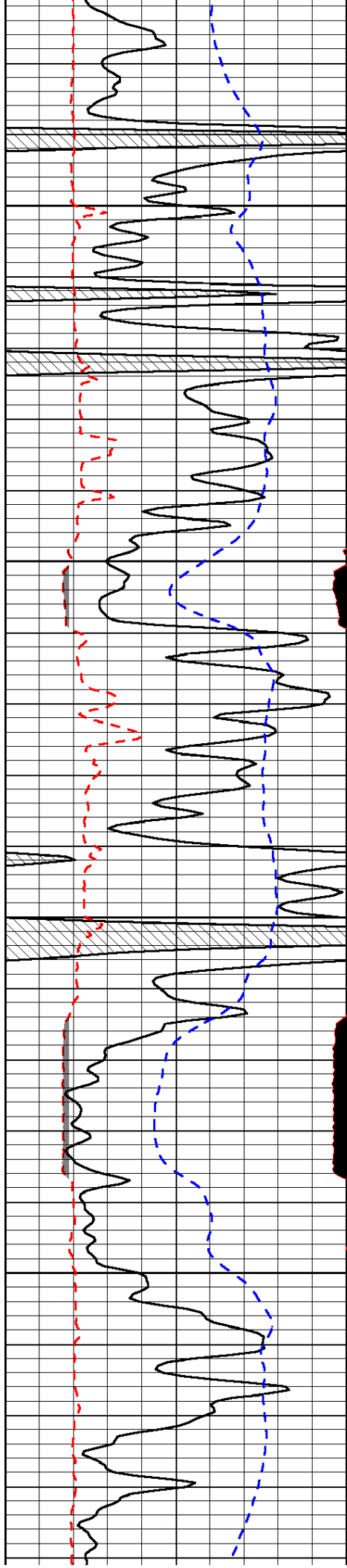


-34

-32

-31

-31

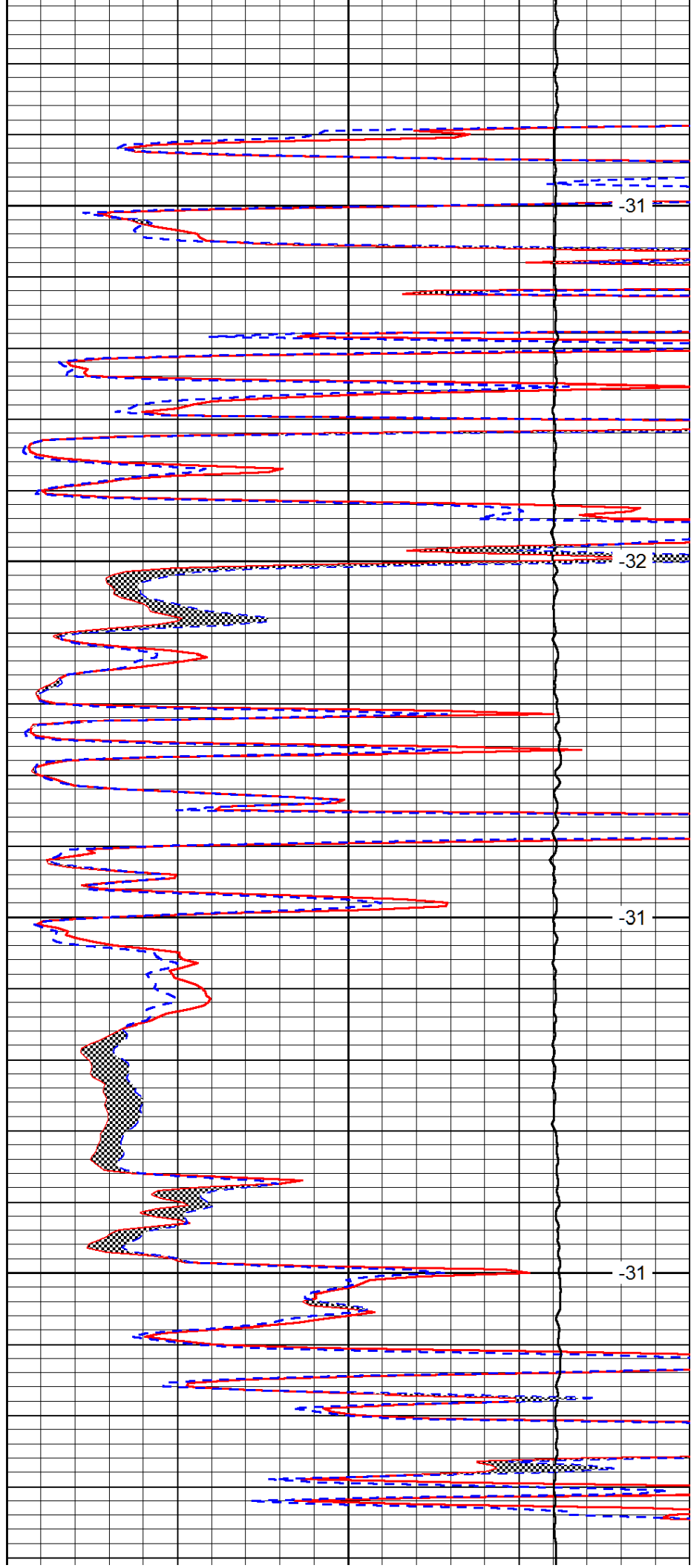


4600

4650

4700

4750

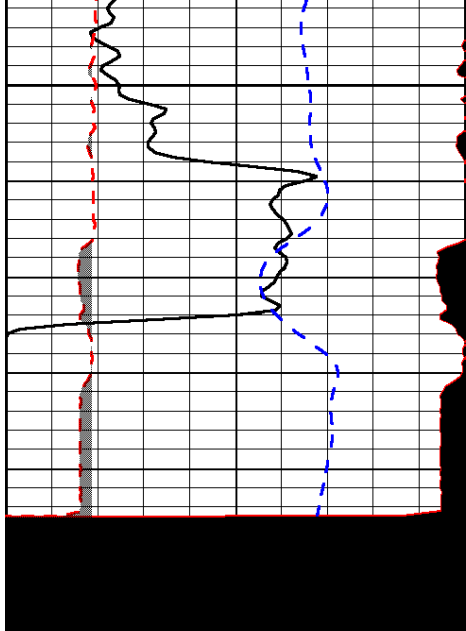


-31

-32

-31

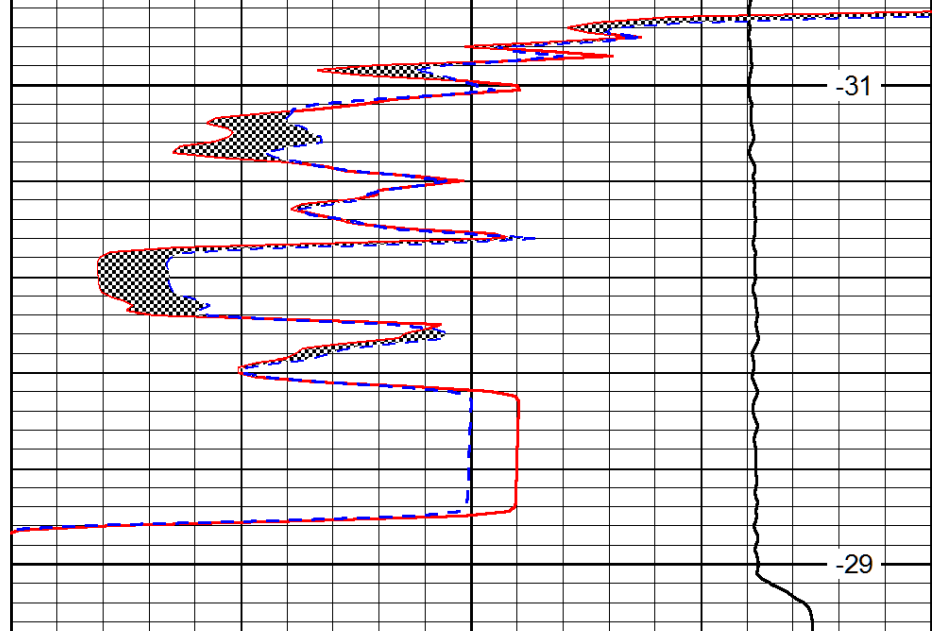
-31



0	Gamma Ray	150
6	MCAL (GAPI)	16
2.875	Mud Cake (GAPI)	7.875
-200	SP (mV)	0

4800

4850



-31

-29

0	Micro Inverse 1 X 1	40
0	Micro Normal 2"	40
10000	Line Weight	0

LSPD