



Pioneer Energy Services

Microresistivity Log

API No.

15-185-23980-00-00

Company **Murfin Drilling Company, Inc.**

Well **David #1-9**

Field **Wildcat**

County **Stafford**

State

Kansas

Location

330' FNL & 1320' FWL

Other Services
CNL/CDL
DIL/BHCS

Sec: **9**

Twp: **23S**

Rge: **12W**

Elevation

K.B. 1856
D.F. 1845
G.L. 1845

Permanent Datum

Ground Level

Elevation 1845

Log Measured From

Kelly Bushing

11 Ft. Above Perm. Datum

Drilling Measured From

Kelly Bushing

Date

8/2/2014

Run Number

Two

Depth Driller

3850

Depth Logger

3851

Bottom Logged Interval

3850

Top Log Interval

2700

Casing Driller

8.625 @ 64.3

Casing Logger

64.3

Bit Size

7.875

Type Fluid in Hole

Chemical

Salinity, ppm CL

6400

Density / Viscosity

9.3 61

pH / Fluid Loss

9.5 8.0

Source of Sample

Flowline

Rm @ Meas. Temp

1.00 @ 89

Rmf @ Meas. Temp

0.75 @ 89

Rmc @ Meas. Temp

1.35 @ 89

Source of Rmf / Rmc

Charts

Rm @ BHT

0.78 @ 115

Operating Rig Time

5 Hours

Max Rec. Temp. F

115

Equipment Number

91

Location

Hays

Recorded By

D. Schmidt

Witnessed By

Chuck Schmalz

<<< Fold Here >>>

All interpretations are opinions based on inferences from electrical or other measurements and we cannot and do not guarantee the accuracy or correctness of any interpretation, and we shall not, except in the case of gross or willful negligence on our part, be liable or responsible for any loss, costs, damages, or expenses incurred or sustained by anyone resulting from any interpretation made by any of our officers, agents or employees. These interpretations are also subject to our general terms and conditions set out in our current Price Schedule.

Comments

Thank you for using Log-Tech, Inc.
(785) 625-3858

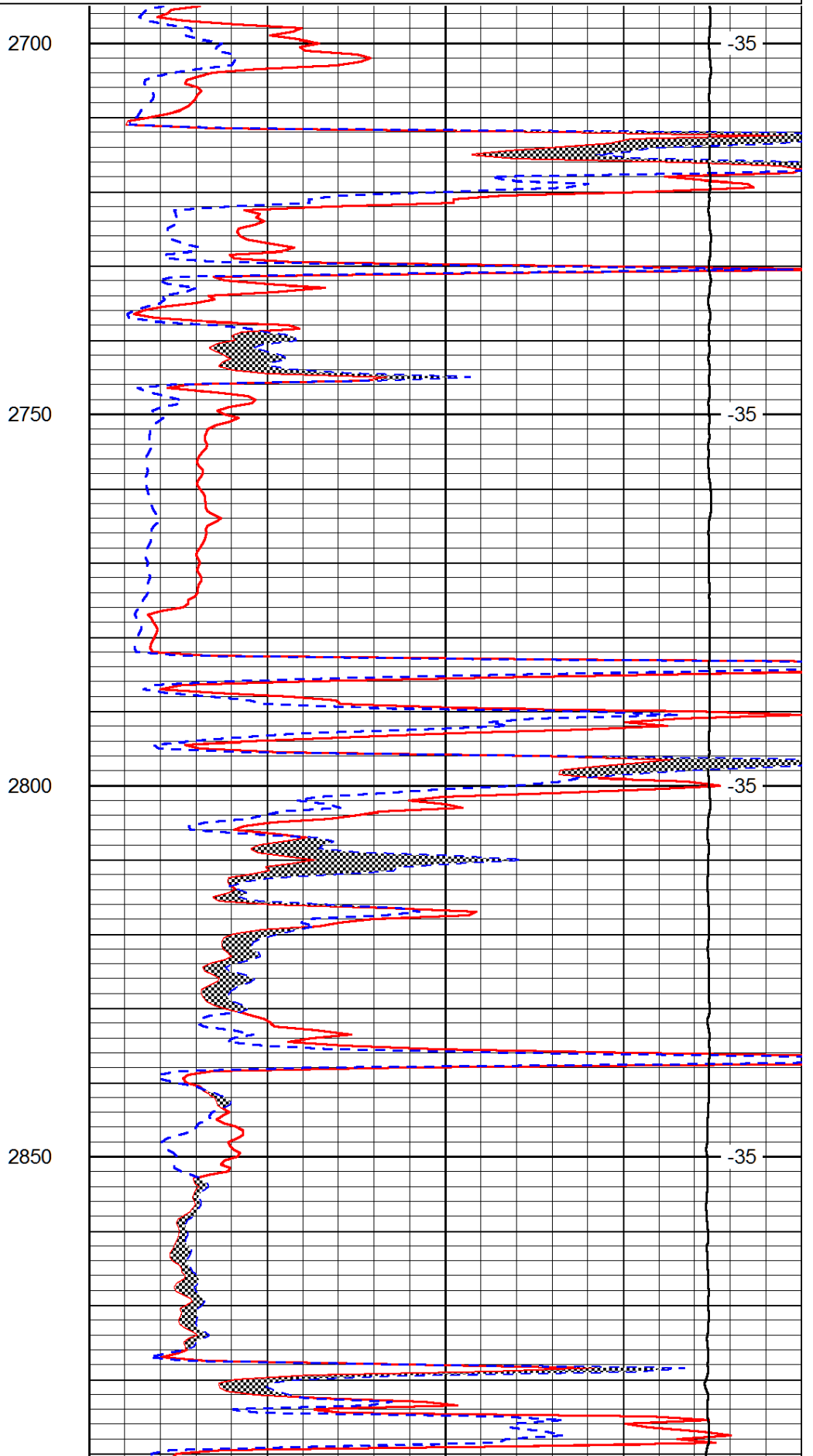
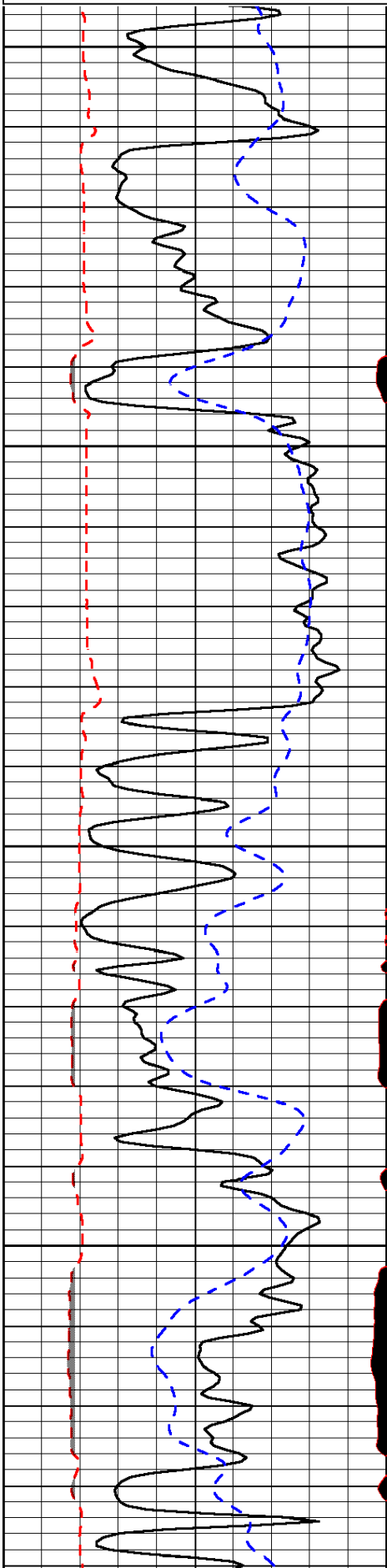
St. John,
North to 70 Rd, 5 East, 1 North, 1/4 East,
South into

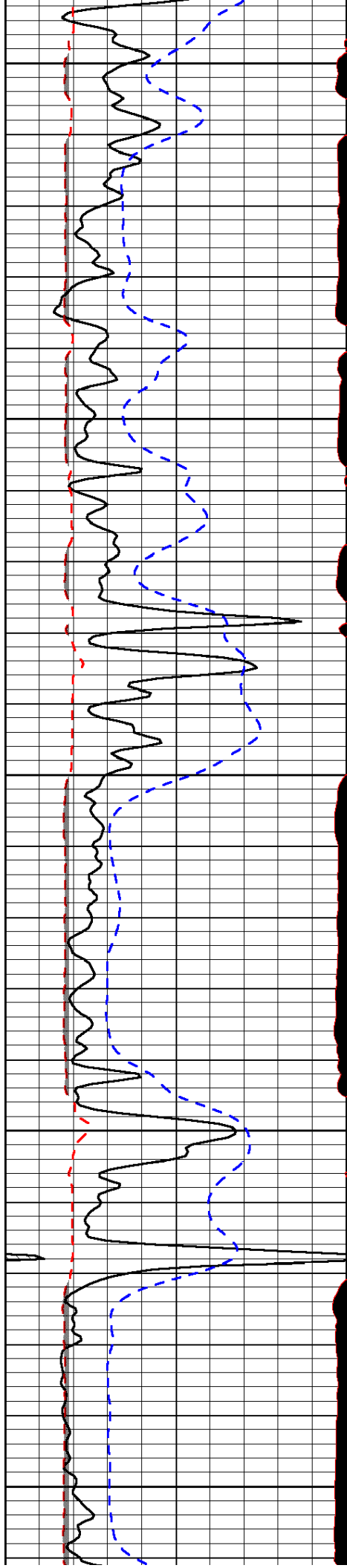
Database File: murfin_david_1-9hd.db
Dataset Pathname: dil/mrfstck
Presentation Format: micro
Dataset Creation: Sat Aug 02 20:35:02 2014
Charted by: Depth in Feet scaled 1:240

0	Gamma Ray	150
6	MCAL (GAPI)	16
2.875	Mud Cake (GAPI)	7.875
-200	SP (mV)	0

0	Micro Inverse 1 X 1	40
0	Micro Normal 2"	40
10000	Line Weight	0

LSPD





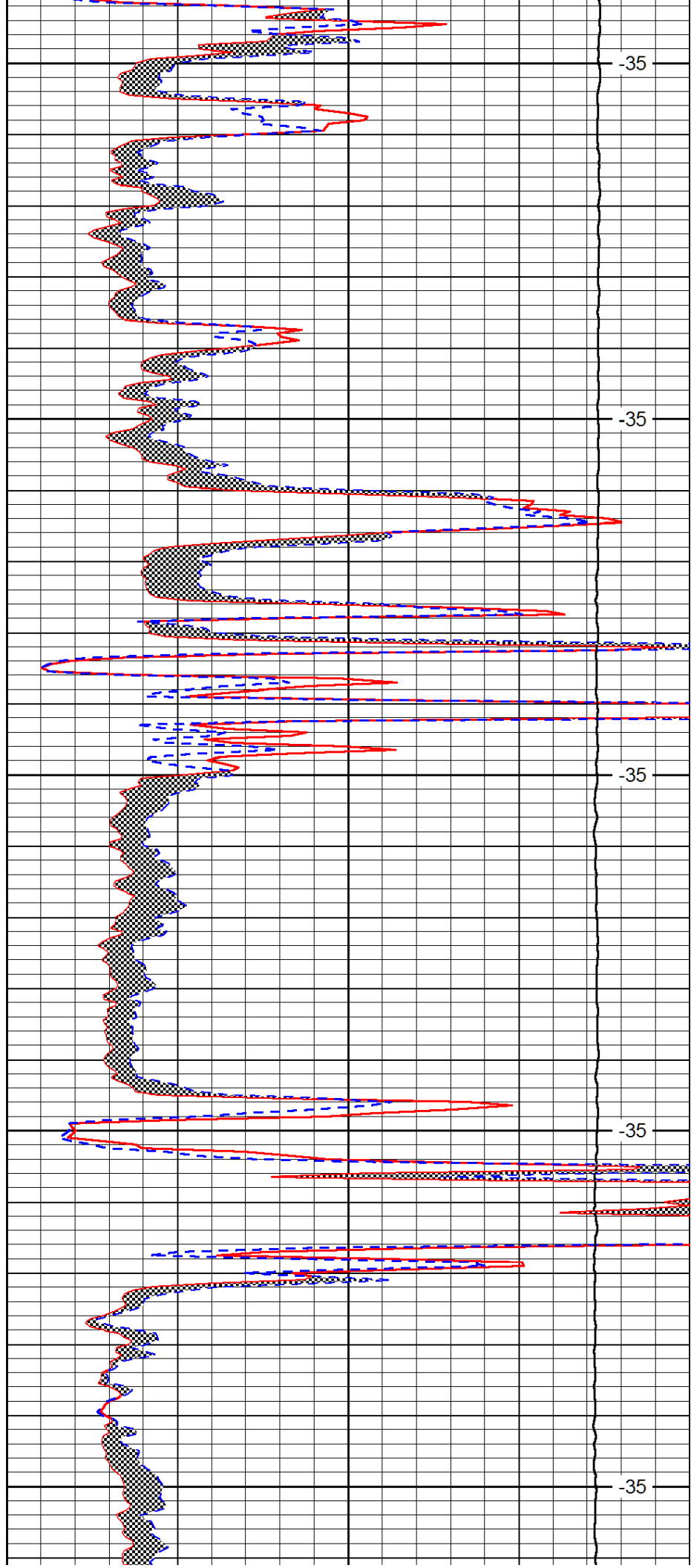
2900

2950

3000

3050

3100



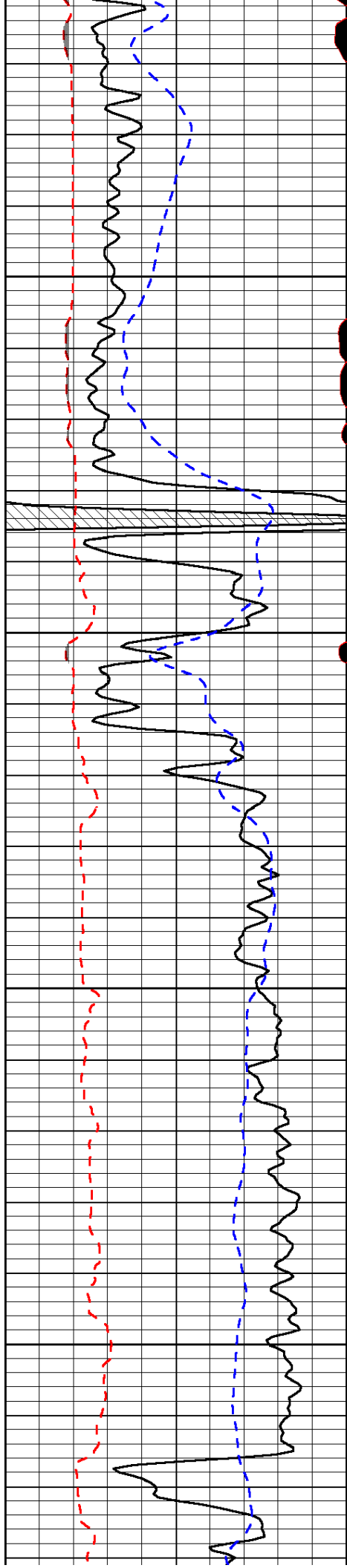
-35

-35

-35

-35

-35

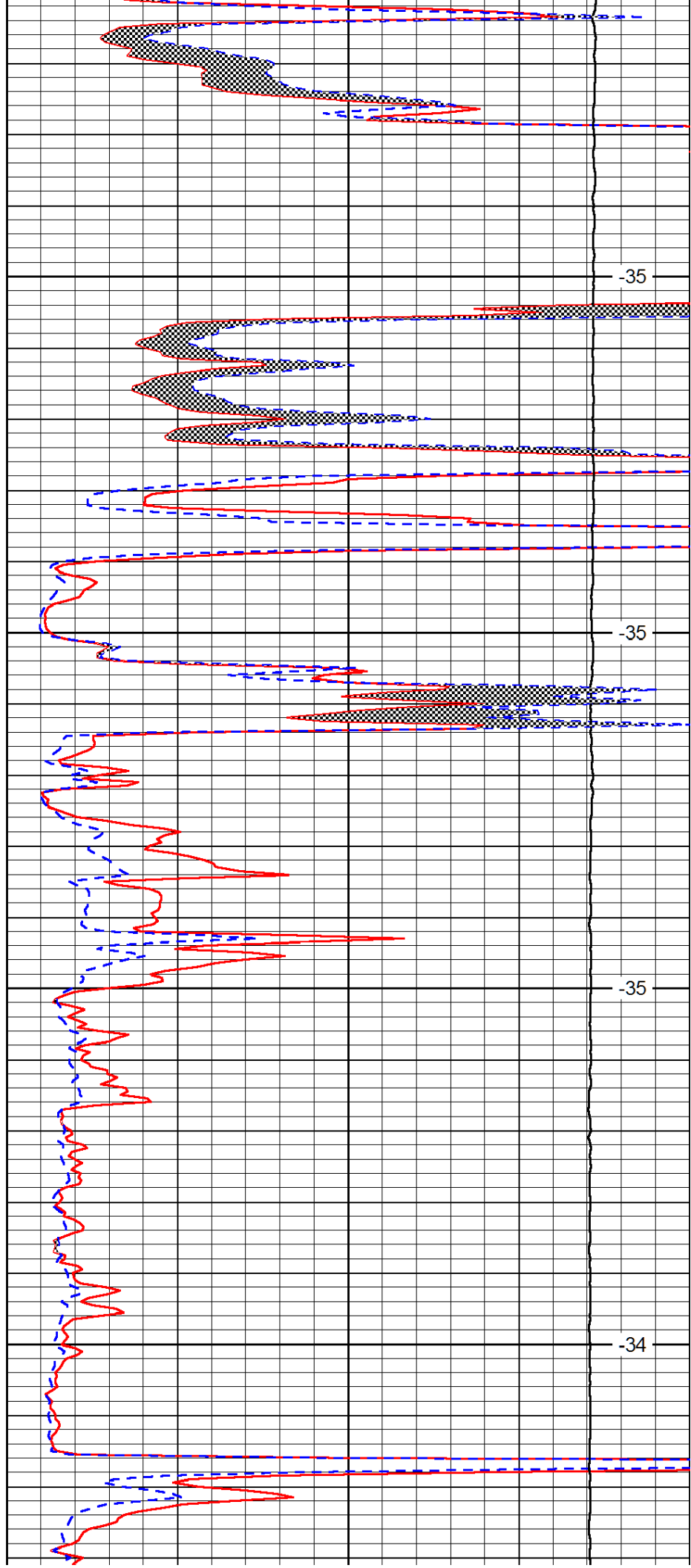


3150

3200

3250

3300

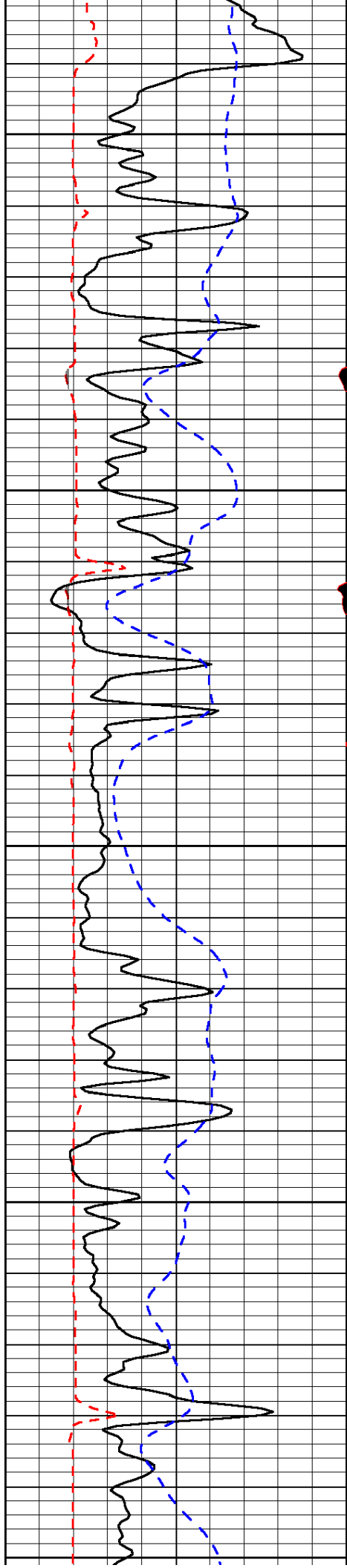


-35

-35

-35

-34



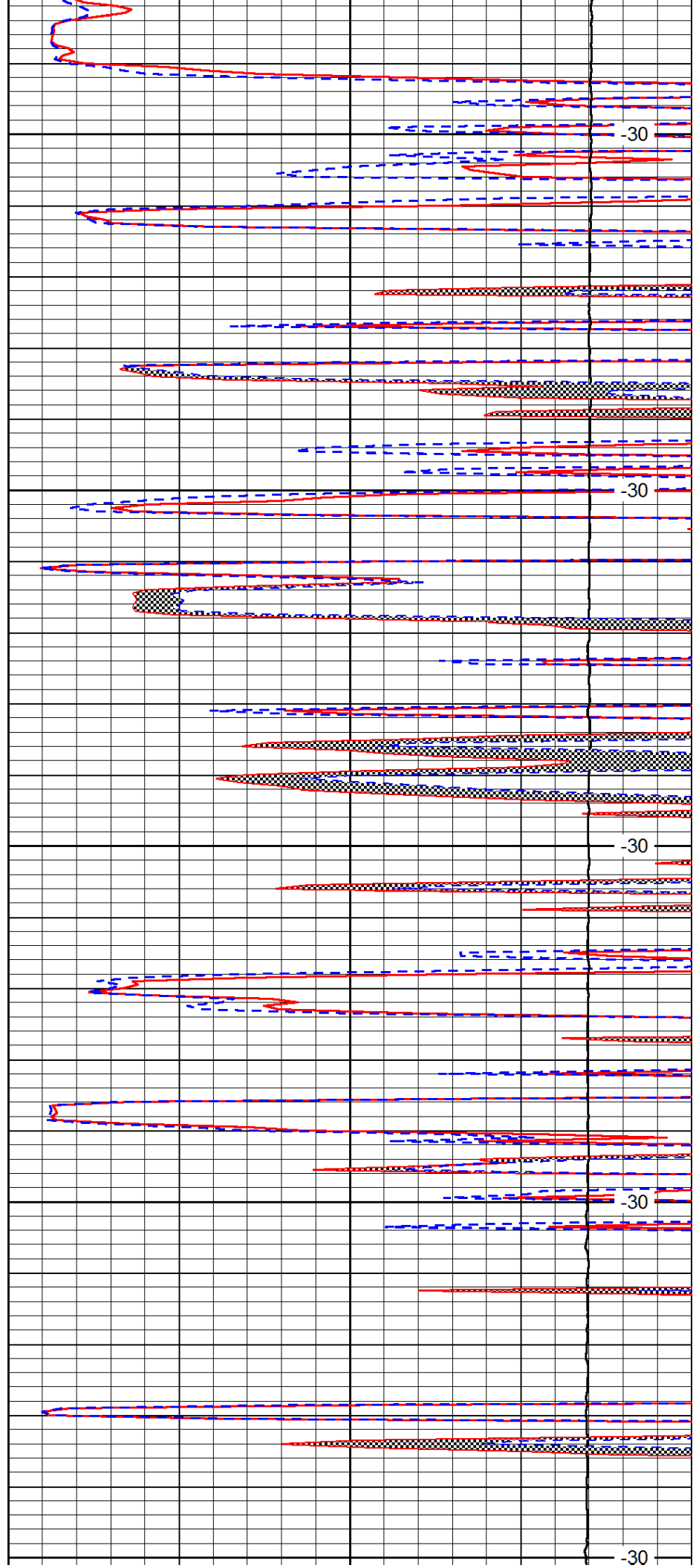
3350

3400

3450

3500

3550



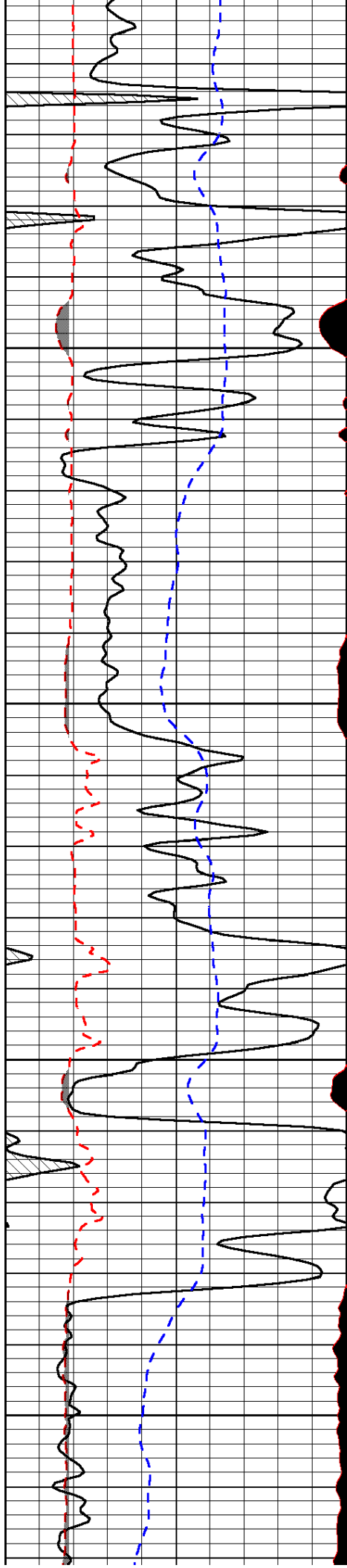
-30

-30

-30

-30

-30

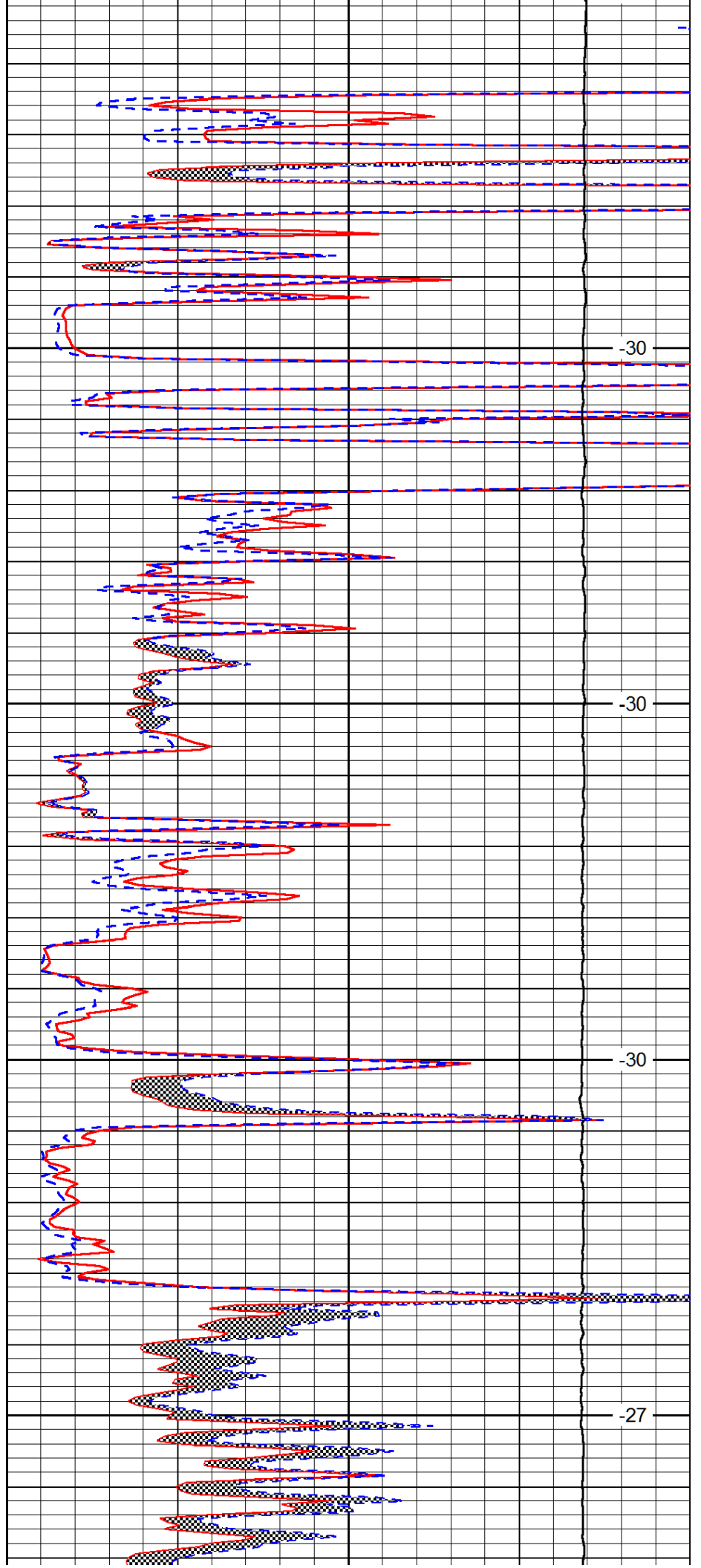


3600

3650

3700

3750

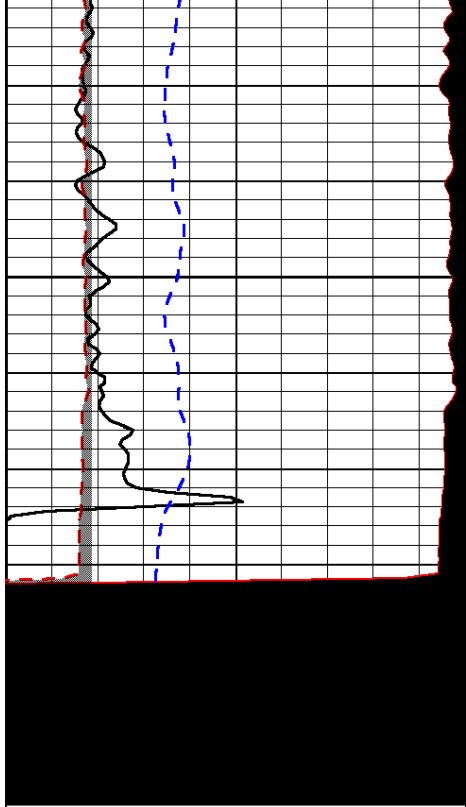


-30

-30

-30

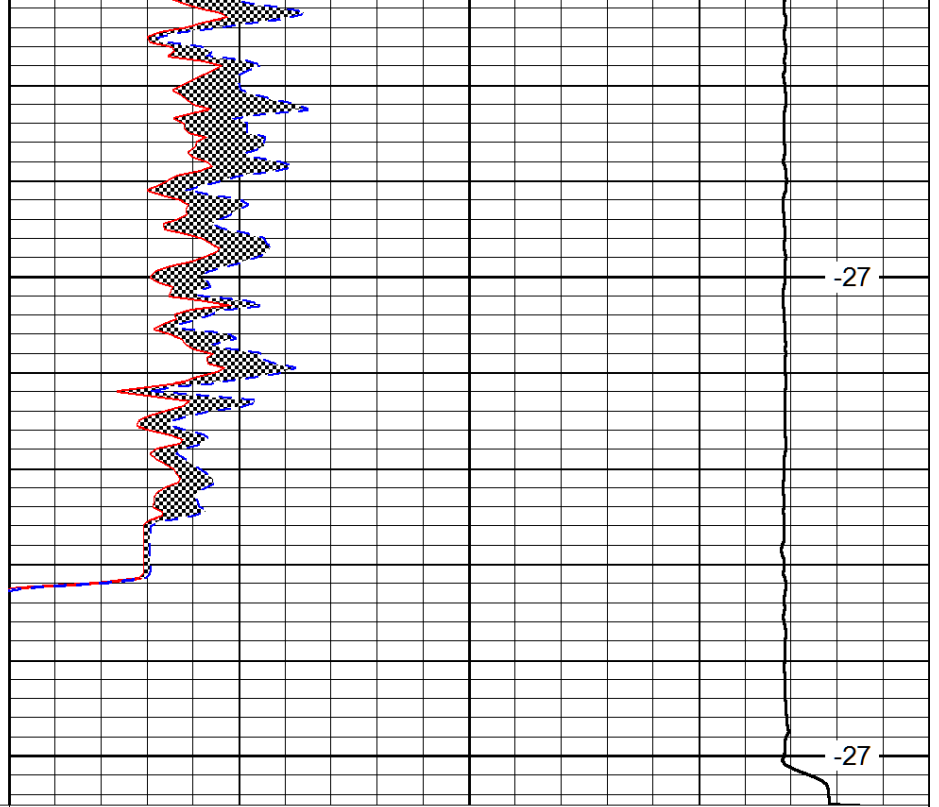
-27



0	Gamma Ray	150
6	MCAL (GAPI)	16
2.875	Mud Cake (GAPI)	7.875
-200	SP (mV)	0

3800

3850



0	Micro Inverse 1 X 1	40
0	Micro Normal 2"	40
10000	Line Weight	0

-27

-27

LSPD