



Green Country Wireline

GAMMA RAY  
CEMENT BOND LOG  
CCL/VDL

Company JONES & BUCK DEVELOPMENT  
Well TEMPLAR # 17-2  
Field WILDCAT  
County COWLEY  
State KANSAS  
Country USA

Location: API #: 15-035-24617

NW SE SE NE  
3080' FSL & 440' FEL  
SEC 17 TWP 30S RGE 5E

Elevation 1321'

Other Services

Permanent Datum  
Log Measured From  
Drilling Measured From  
Elevation  
K.B. 1329'  
D.F. 1328'  
G.L. 1321'

Date	11-10-14			
Run Number	1			
Depth Driller	3264'			
Depth Logger	3246'			
Bottom Logged Interval	3245'			
Top Log Interval	2196'			
Open Hole Size	WATER			
Type Fluid	---			
Density / Viscosity	---			
Max. Recorded Temp.	---			
Estimated Cement Top	1780'			
Time Well Ready	---			
Time Logger on Bottom	---			
Equipment Number	3			
Location	DEWEY			
Recorded By	HEKREN			
Witnessed By	MR JONES			
Recorded By	MR BUCK			
Witnessed By	---			
Run Number	---			
Bit	---			
From	---			
To	---			
Size	---			
Weight	---			
From	---			
To	---			
Casing Record	Size	Wgt/Ft	Top	Bottom
Surface String	8.625"		SURFACE	220'
Prot String				
Production String	5.5"		SURFACE	TD
Liner				

<<<>>> Fold Here >>>

All interpretations are opinions based on inferences from electrical or other measurements and we cannot and do not guarantee the accuracy or correctness of any interpretation, and we shall not, except in the case of gross or willful negligence on our part, be liable or responsible for any loss, costs, damages, or expenses incurred or sustained by anyone resulting from any interpretation made by any of our officers, agents or employees. These interpretations are also subject to our general terms and conditions set out in our current Price Schedule.

Comments



Green Country Wireline

GR CBL CCL VDL

Database File: templar17-2.db  
Dataset Pathname: templar17/run1/pass1  
Presentation Format: standard  
Dataset Creation: Mon Nov 10 07:54:31 2014 by Log Std Casedhole 09061  
Charted by: Depth in Feet scaled 1:240

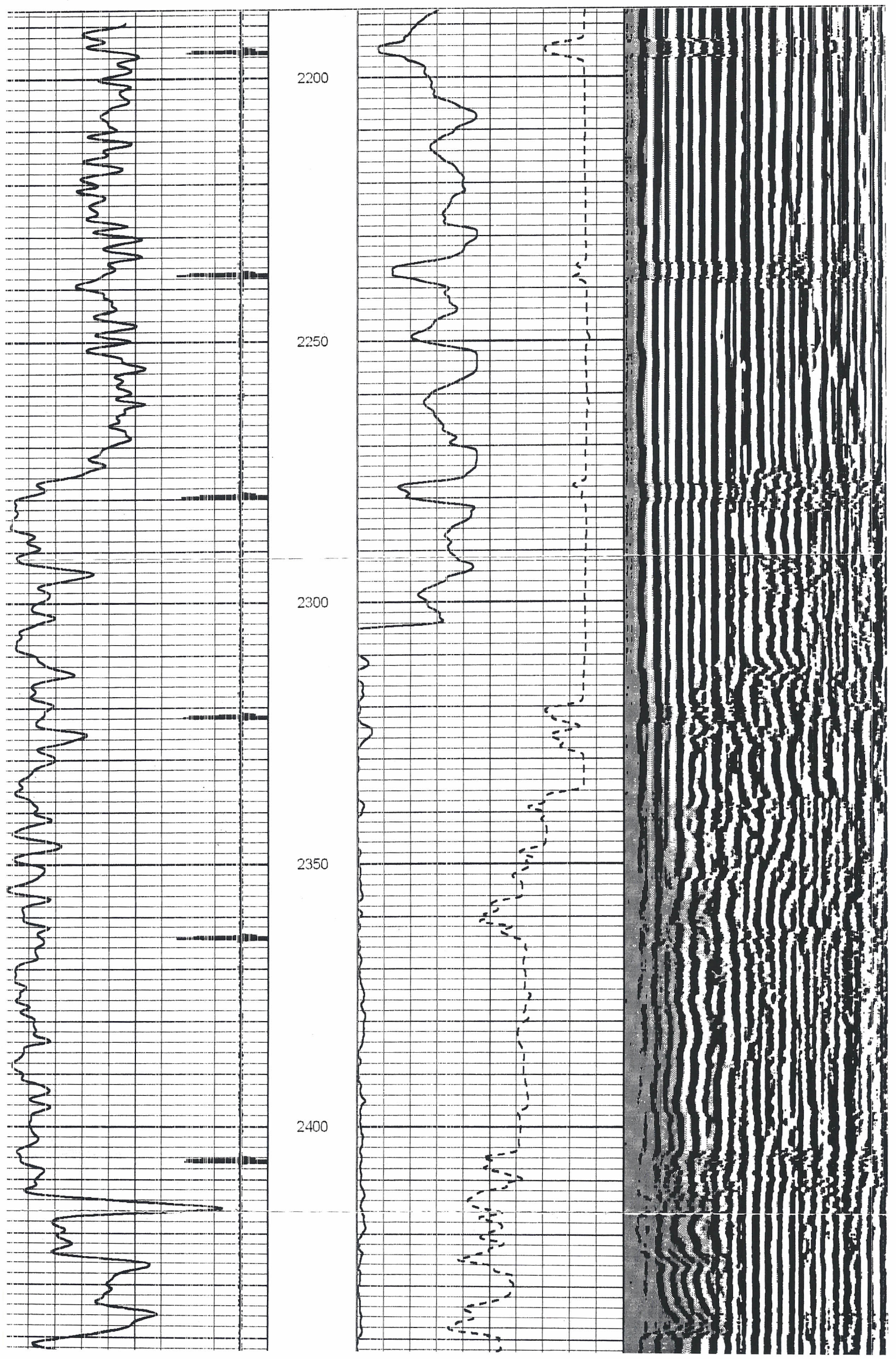
Collar Locator	-1	800	TT3FT (usec)	200	200	WVF3FT	1200
Gamma Ray (GAPI)	65	-3	AMP3FT (mV)	300			

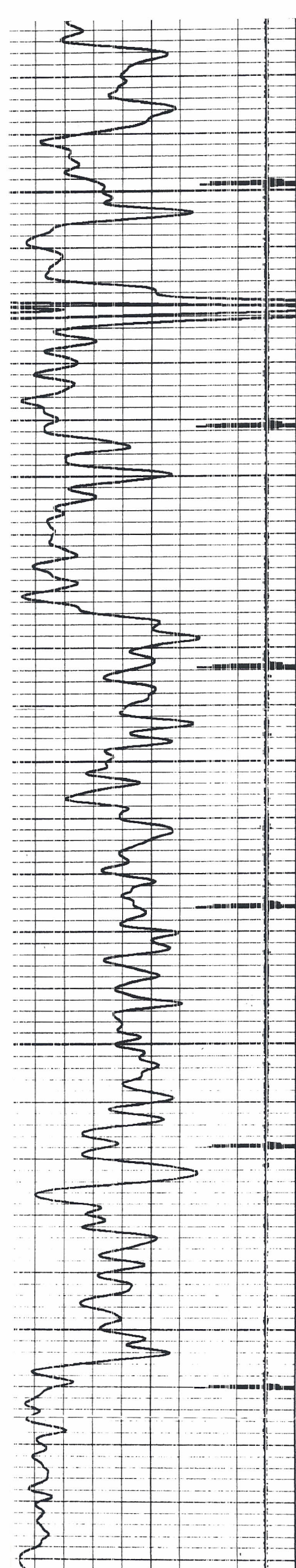


Collar Locator	-1
Gamma Ray (GAPI)	65

800	TT3FT (usec)	200
-3	AMP3FT (mV)	300

WVF3FT 1200





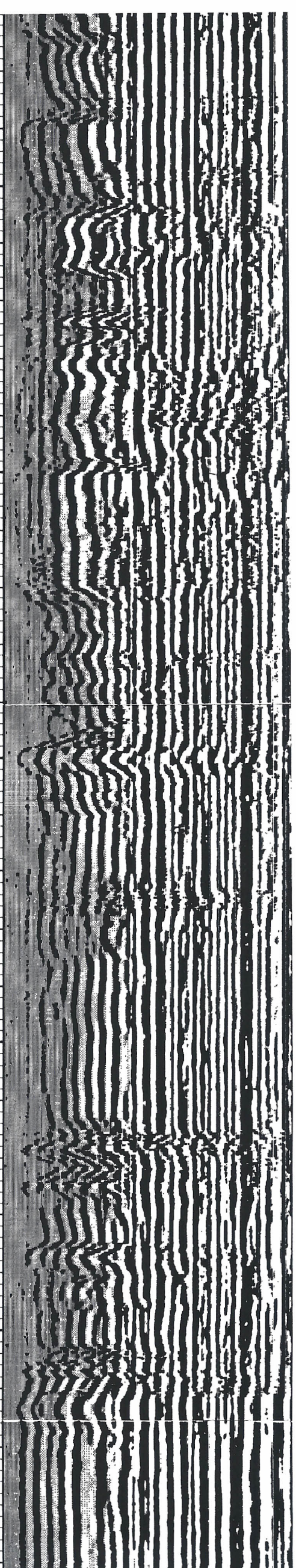
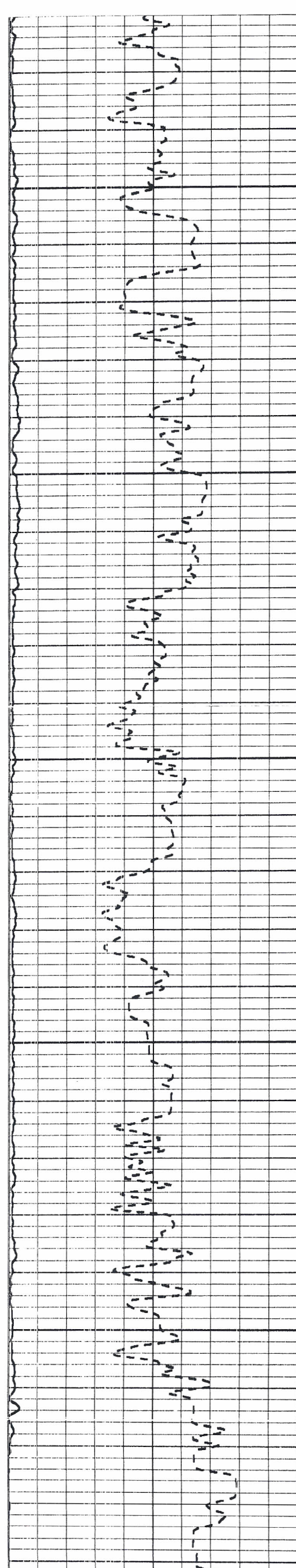
2450

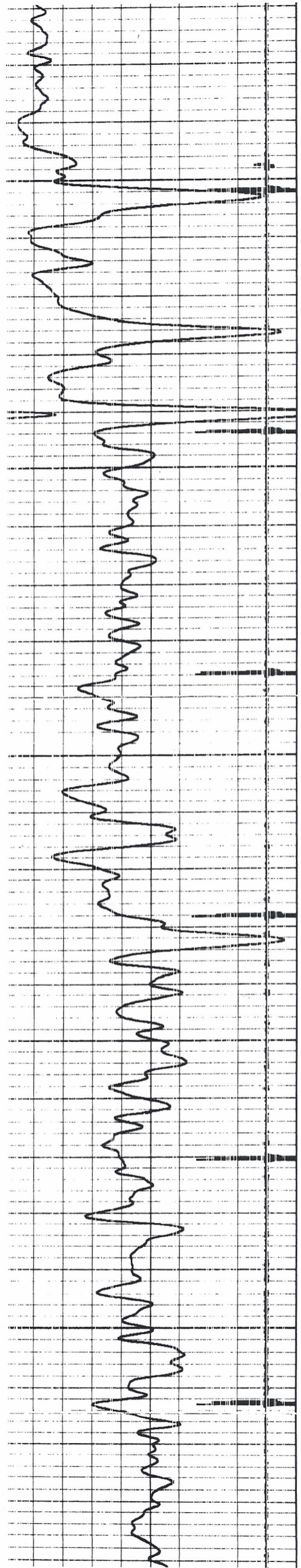
2500

2550

2600

2650





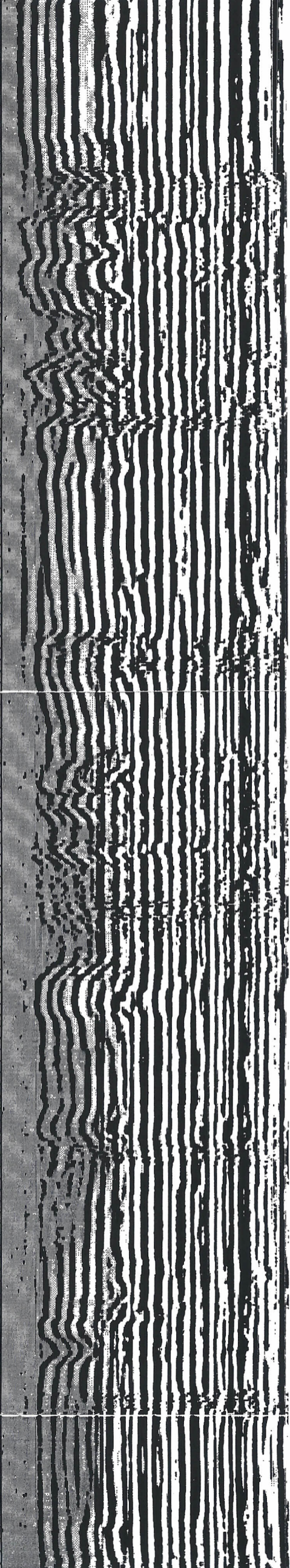
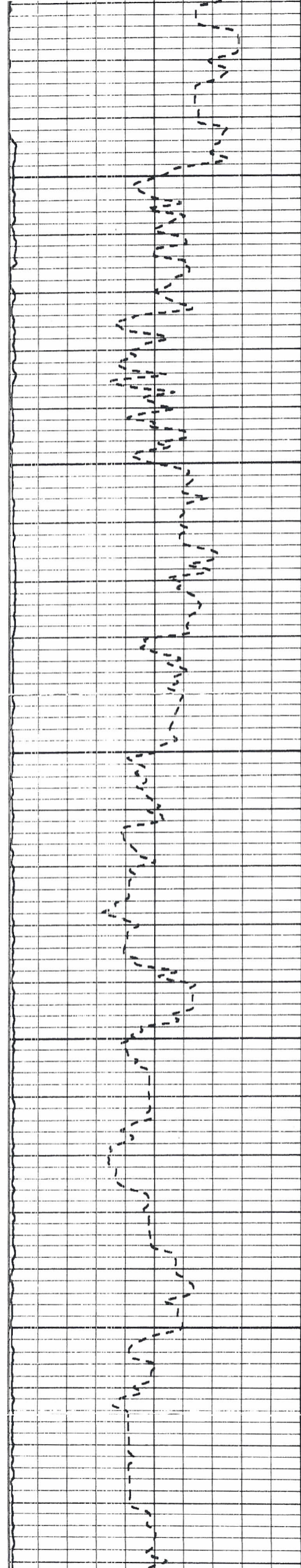
2700

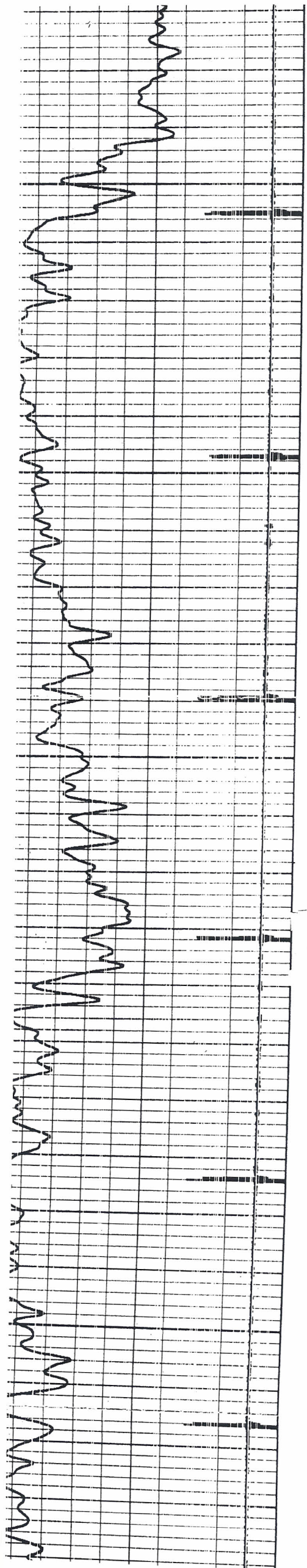
2750

2800

2850

2900





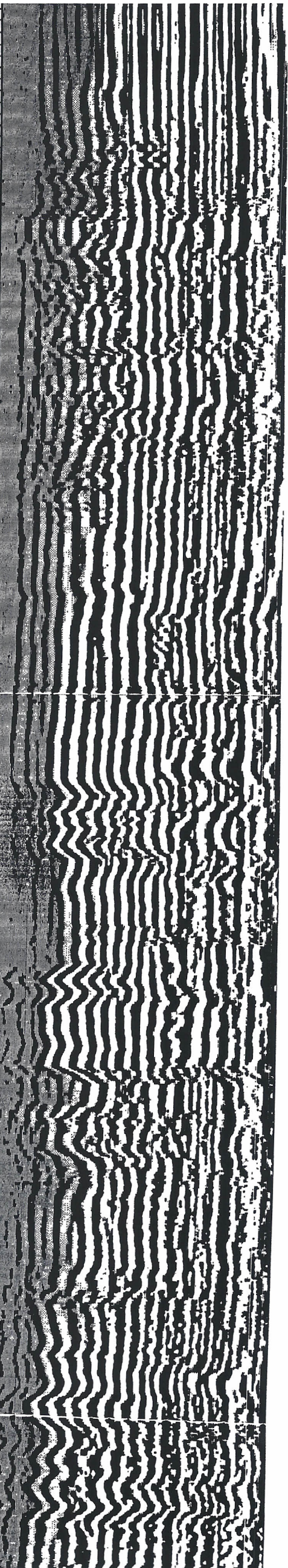
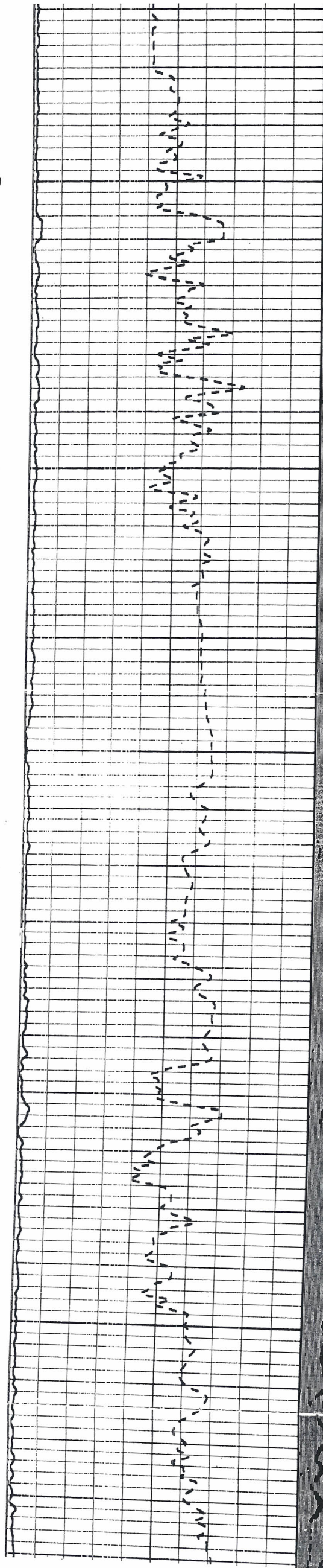
2950

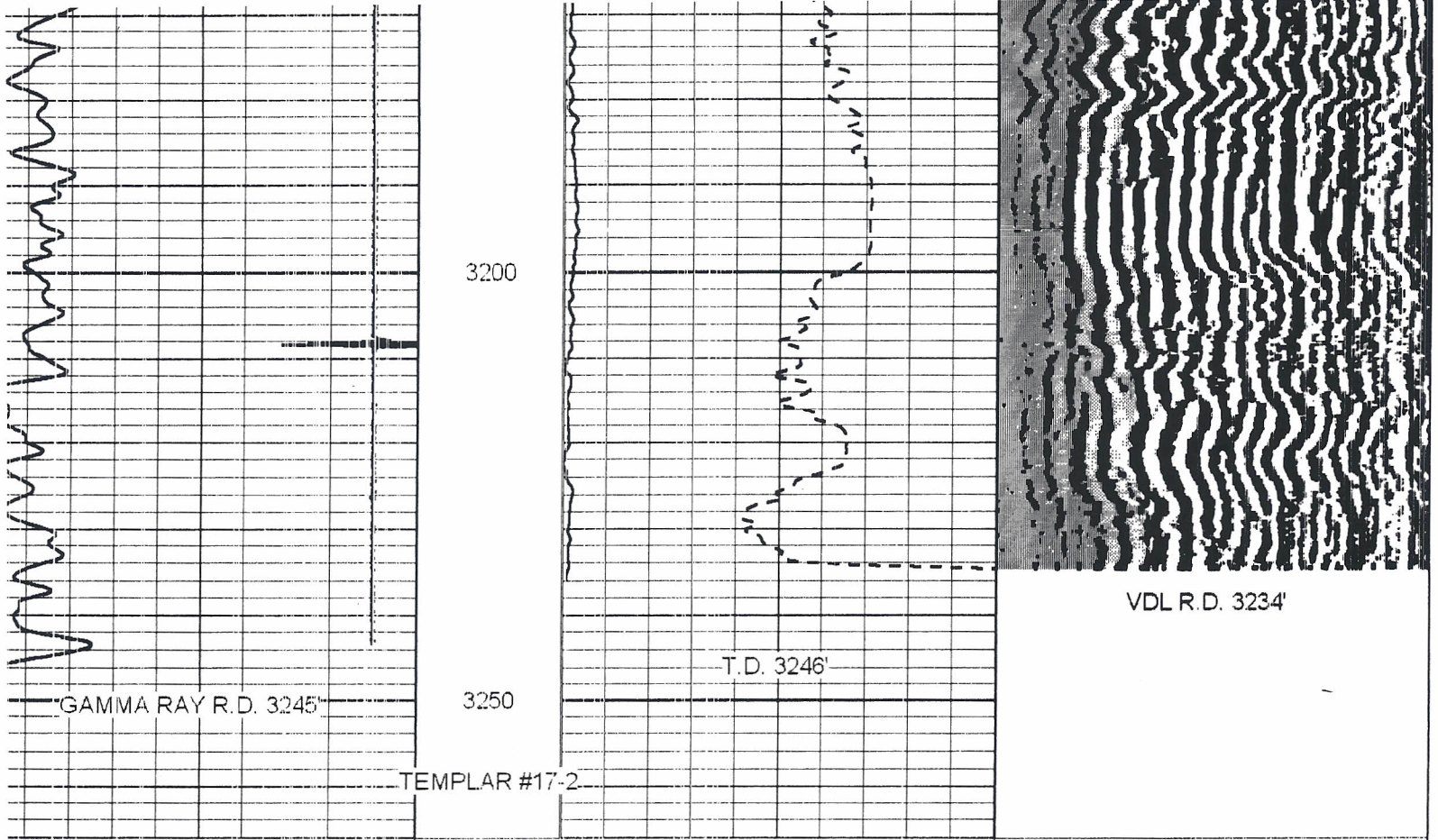
3000

3050

3100

3150





Collar Locator	-1	800	TT3FT (usec)	200	200	WVF3FT	1200
Gamma Ray (GAPI)	65	-3	AMP3FT (mV)	300			