



MIDWEST SURVEYS
 LOGGING - PERFORATING - CONSULTING SERVICES
 P.O. Box 68, Osawatomie, KS 66064
 913 / 755 - 2128

GAMMA RAY / NEUTRON / CCL

File No. Company Bobcat Oilfield Services, Inc.
 Well Alva Schendel No. 11W-14
 Field Paola / Rantoul
 County Miami State Kansas

Location 1023' FSL & 4324' FEL
 NW-NE-SW-SW
 Sec. 24 Typ. 16s Rge. 21e Elevation 1015'
 Permanent Datum GL
 Log Measured From GL
 Drilling Measured From GL

Date 10-29-2014
 Run Number One
 Depth Drier 721.0
 Depth Logger 718.0
 Bottom Logged Interval 717.0
 Top Log Interval 20.0
 Fluid Level Full

Type Fluid Water
 Density / Viscosity NA
 Salinity - PPM Cl NA
 Max Recorded Temp NA
 Estimated Cement Top 0.0
 Equipment No. Location 102 Osawatomie
 Recorded By Gary Windsch
 Witnessed By Bob Ebenhart

BORE-HOLE RECORD				CASING RECORD			
RUN	BIT	FROM	TO	SIZE	WGT.	FROM	TO
One	8.75"	0.0	20.0	6.00"	15.0 #	0.0	20.0
Two	5.625"	20.0	721.0	2.875"	6.5 #	0.0	718.0

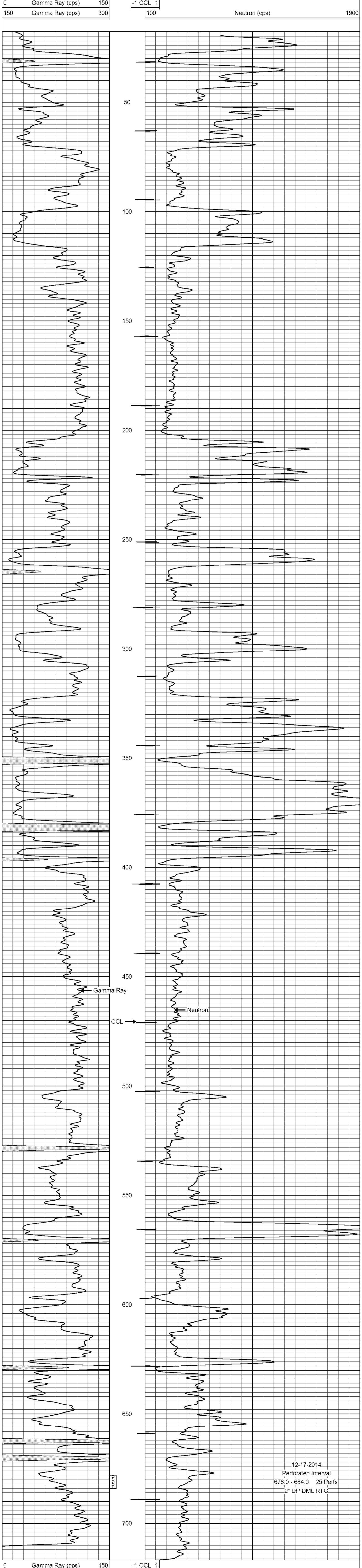
<<< Fold Here >>>

All interpretations are opinions based on inferences from electrical or other measurements and we cannot and do not guarantee the accuracy or correctness of any interpretation, and we shall not, except in the case of gross or willful negligence on our part, be liable or responsible for any loss, costs, damages, or expenses incurred or sustained by anyone resulting from any interpretation made by any of our officers, agents or employees. These interpretations are also subject to our general terms and conditions set out in our current Price Schedule.

Comments

Drilling Contractor :
 Dale Jackson Production Company

Database File: schendel11w-14a.db
 Dataset Pathname: pass1
 Presentation Format: gr-n-ccl
 Dataset Creation: Wed Oct 29 14:17:07 2014 by Log SCH 111116
 Charted by: Depth in Feet scaled 1:240



12-17-2014
 Perforated Interval
 678.0 - 684.0 25 Perfs
 2" DP DML RTG