



**COMPLETION  
& PRODUCTION  
SERVICES CO.**

**MICRO  
LOG**

Company SPECIAL ENERGY CORPORATION  
Well HXP #4  
Field CHURCHVIEW  
County EDWARDS  
State KANSAS

Company SPECIAL ENERGY CORPORATION  
Well HXP #4  
Field CHURCHVIEW  
County EDWARDS State KANSAS

Location: API # : 15-047-21649-0000  
3795' FSL & 2310' FWL  
N/2 - NE - SE - NW  
SEC 20 TWP 23S RGE 19W  
Permanent Datum GROUND LEVEL Elevation 2240  
Log Measured From KELLY BUSHING 11' A.G.L.  
Drilling Measured From KELLY BUSHING  
Other Services  
CDL/CNL/PE  
DIL  
Elevation  
K.B. 2251  
D.F. 2249  
G.L. 2240

|                              |               |
|------------------------------|---------------|
| Date                         | 10/6/14       |
| Run Number                   | TWO           |
| Depth Driller                | 4775          |
| Depth Logger                 | 4765          |
| Bottom Logged Interval       | 4763          |
| Top Log Interval             | 2200          |
| Casing Driller               | 8 5/8"@860'   |
| Casing Logger                | 856           |
| Bit Size                     | 7 7/8"        |
| Type Fluid in Hole           | CHEMICAL MUD  |
| Density / Viscosity          | 9.2/50        |
| pH / Fluid Loss              | 9.5/10.0      |
| Source of Sample             | FLOWLINE      |
| Rim @ Meas. Temp             | .650@86F      |
| Rmf @ Meas. Temp             | .488@86F      |
| Rmc @ Meas. Temp             | .780@86F      |
| Source of Rmf / Rmc          | MEASUREMENT   |
| Rim @ BHT                    | .454@123F     |
| Time Circulation Stopped     | 5.5 HOURS     |
| Time Logger on Bottom        | 9:15 P.M.     |
| Maximum Recorded Temperature | 123F          |
| Equipment Number             | 4854          |
| Location                     | HAYS, KANSAS  |
| Recorded By                  | JEFF LUEBBERS |
| Witnessed By                 | ROD ANDERSEN  |
|                              | GEORGE UTLEY  |

<<< Fold Here >>>

All interpretations are opinions based on inferences from electrical or other measurements and we cannot and do not guarantee the accuracy or correctness of any interpretation, and we shall not, except in the case of gross or willful negligence on our part, be liable or responsible for any loss, costs, damages, or expenses incurred or sustained by anyone resulting from any interpretation made by any of our officers, agents or employees. These interpretations are also subject to our general terms and conditions set out in our current Price Schedule.

**Comments**

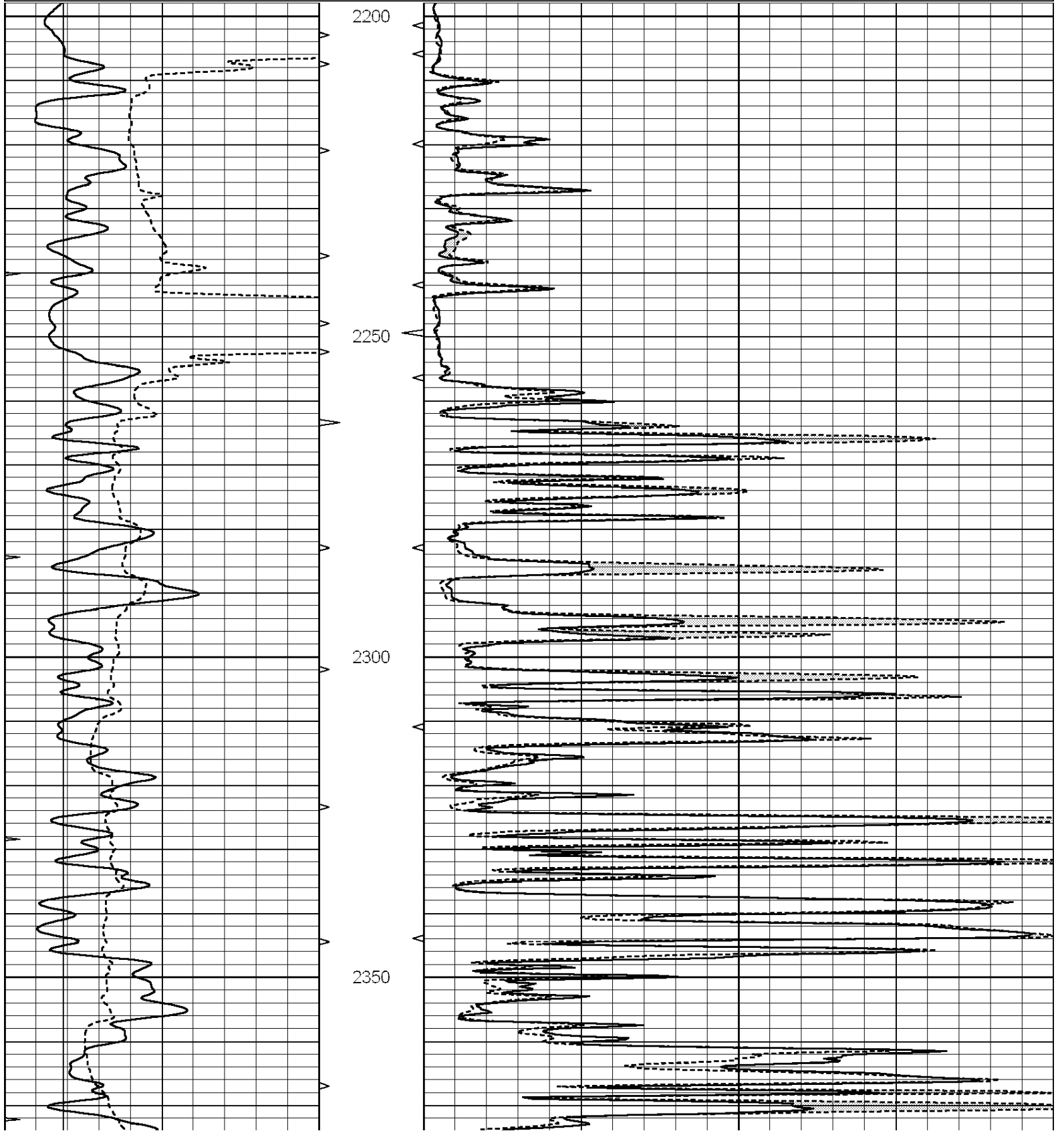
THANK YOU FOR USING "NABORS" HAYS, KANSAS (785) 628-6395  
DIRECTIONS  
ROZEL, KS. (156 & 280TH AVE.), 10S. TO "RD. D", 1 1/2W., S. INTO

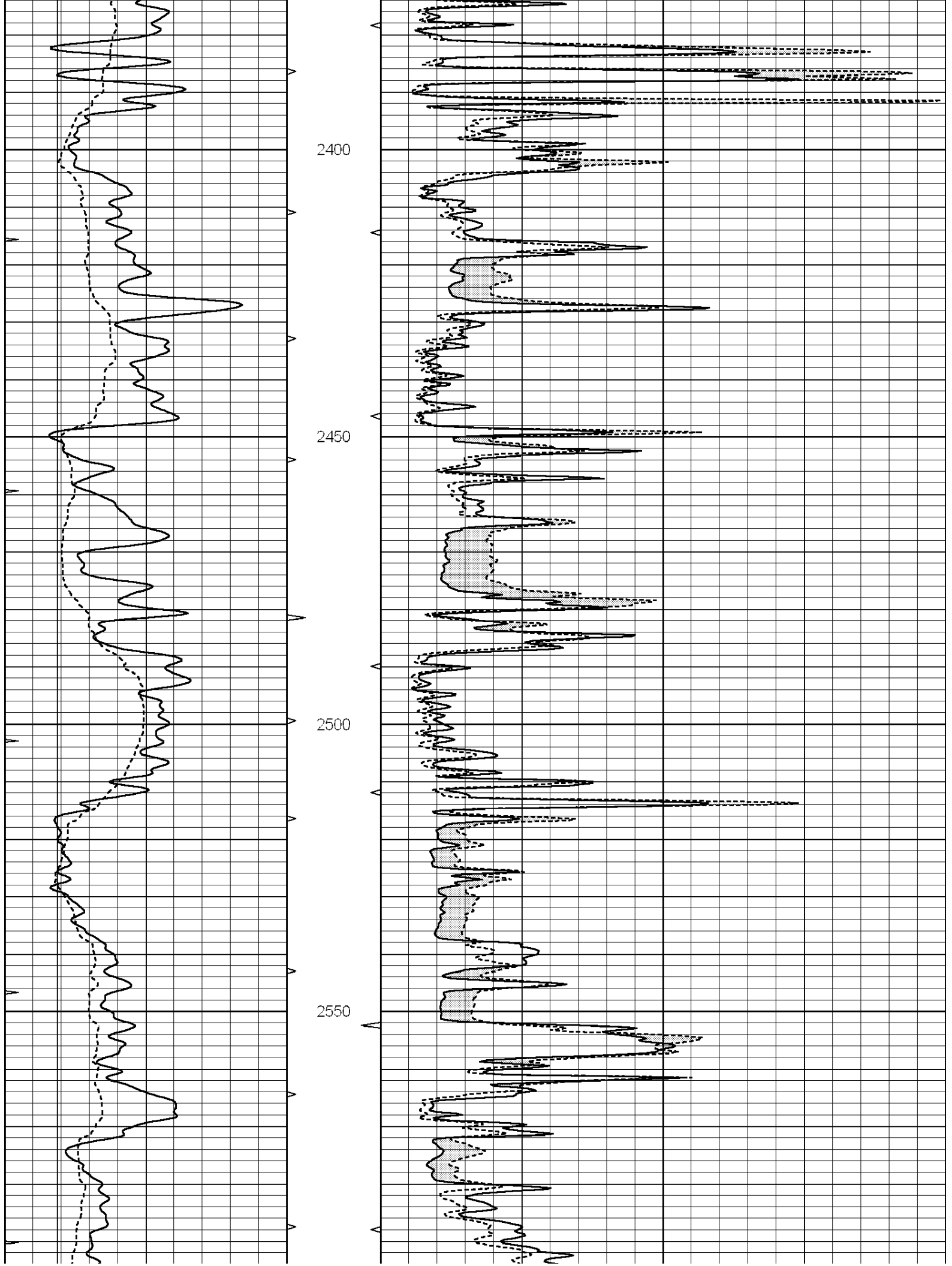


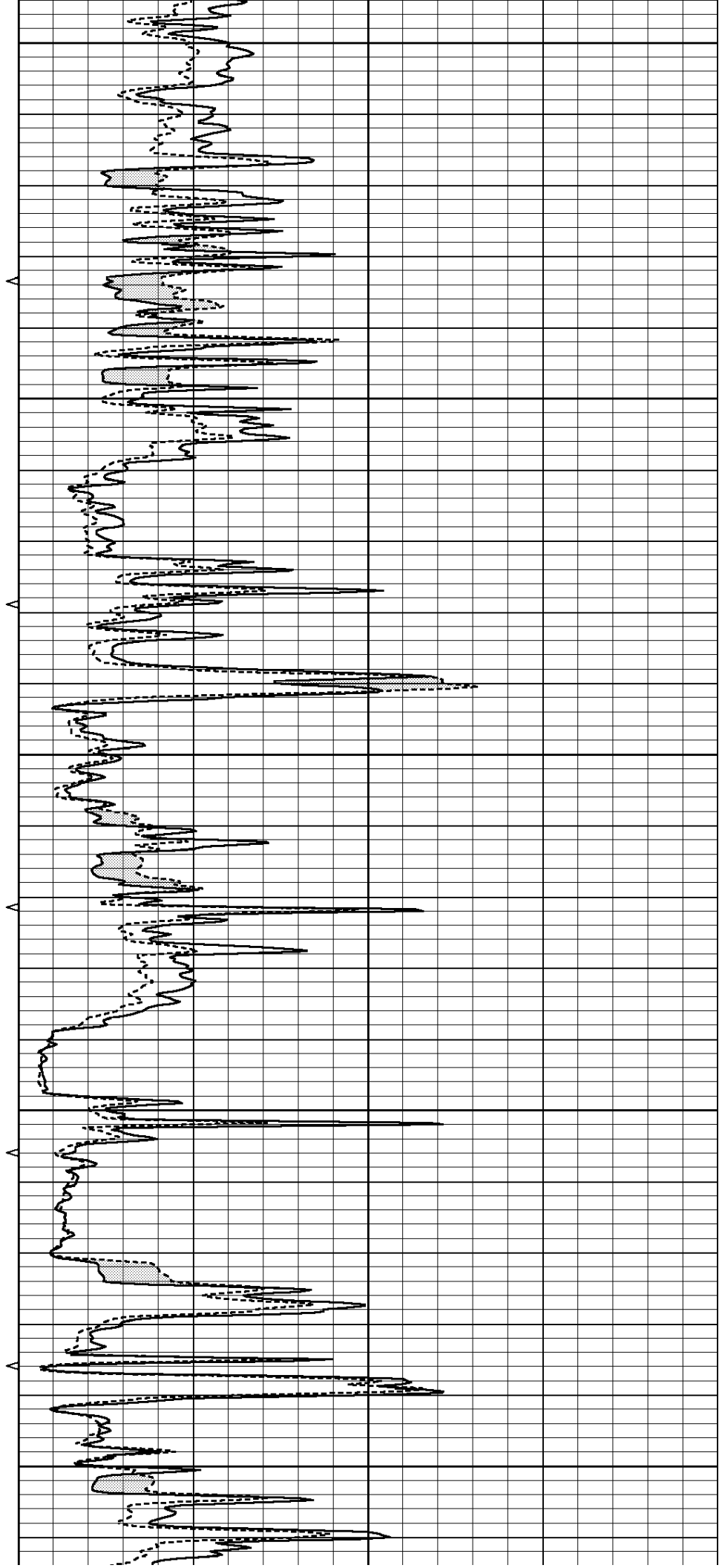
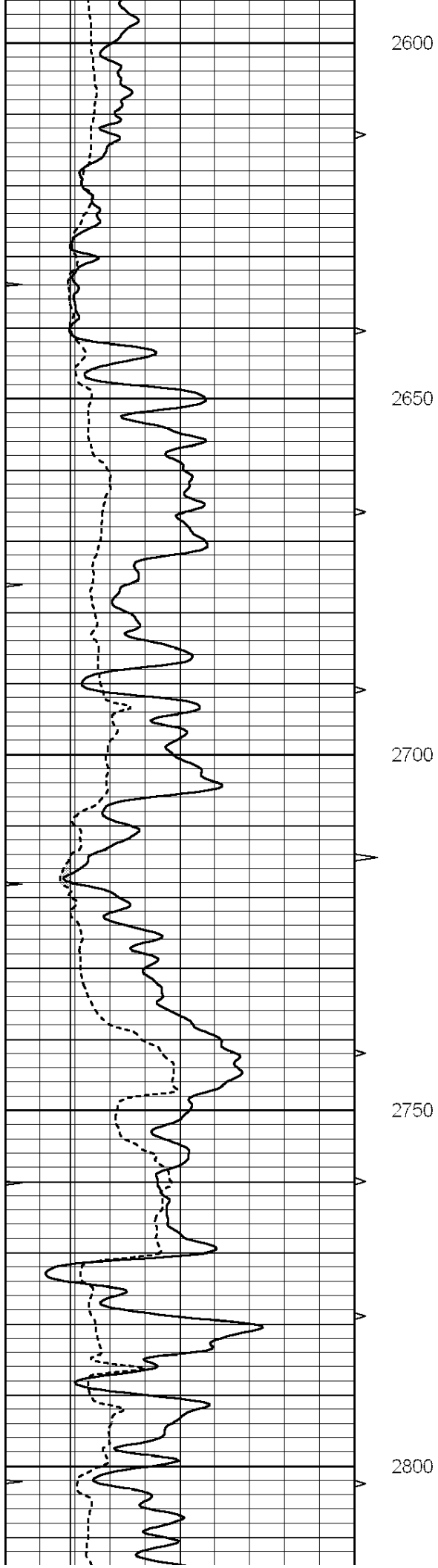
**MAIN SECTION**

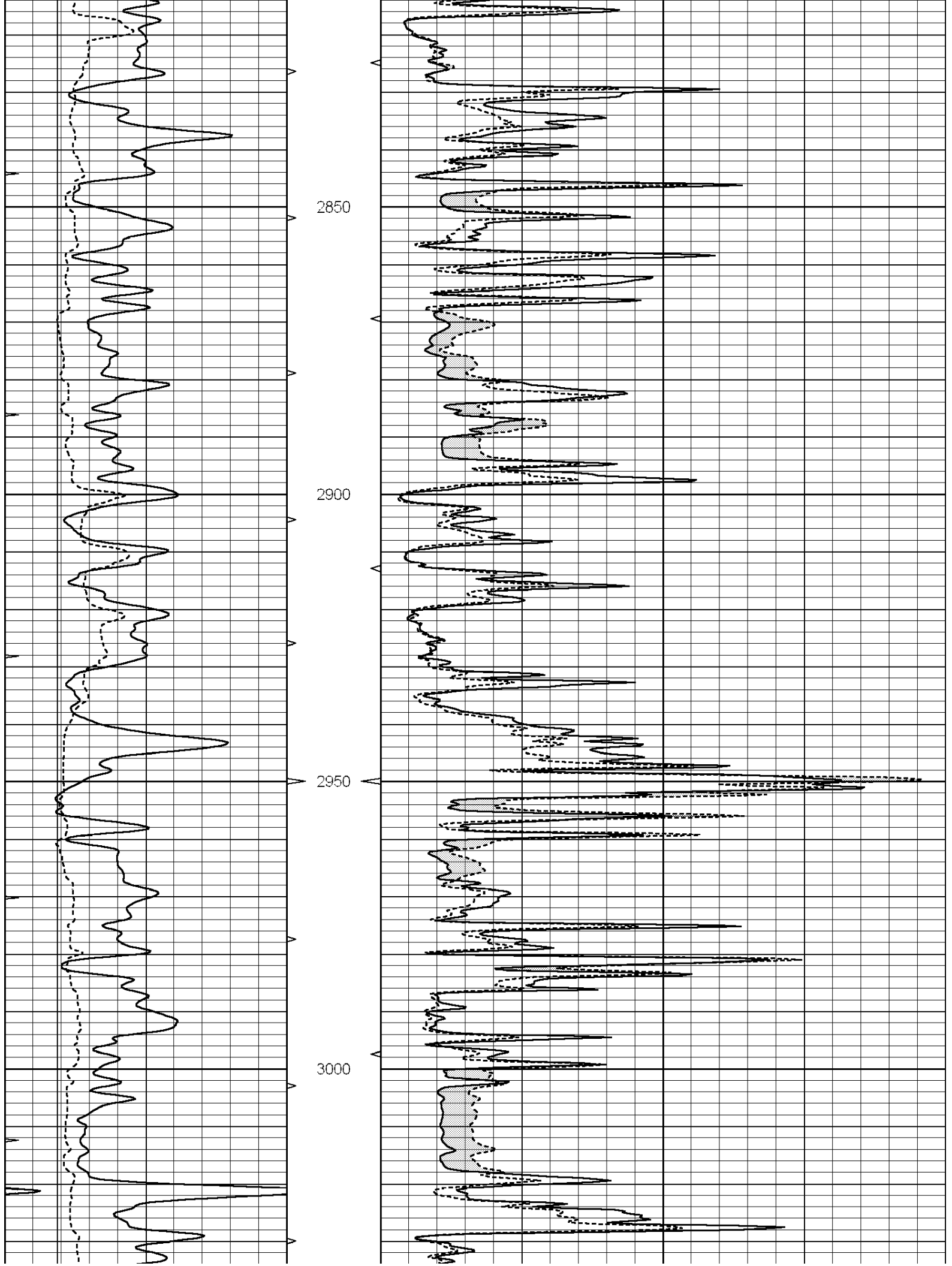
Database File: 25891pe.db  
 Dataset Pathname: pass7.4  
 Presentation Format: micro  
 Dataset Creation: Tue Oct 07 01:41:21 2014  
 Charted by: Depth in Feet scaled 1:240

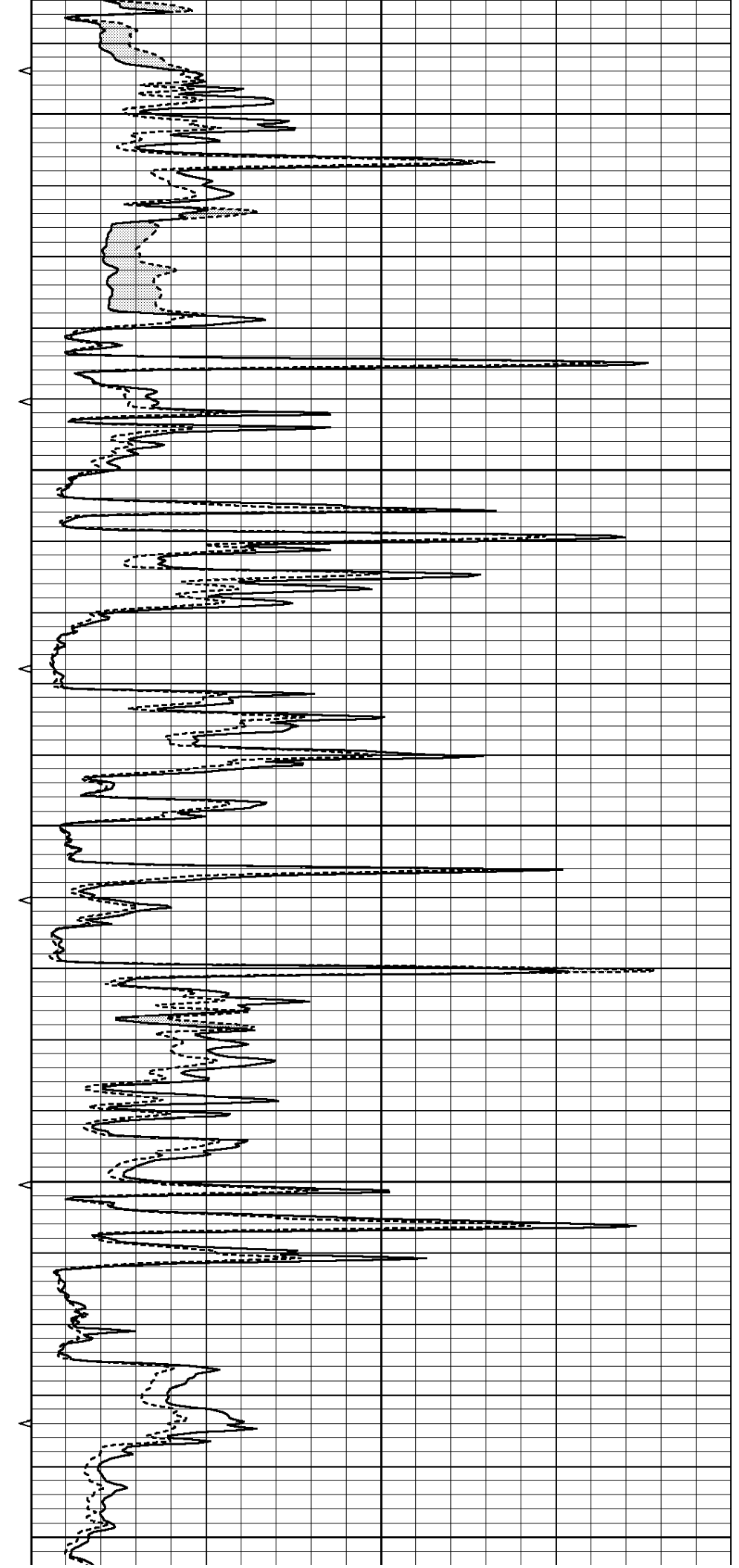
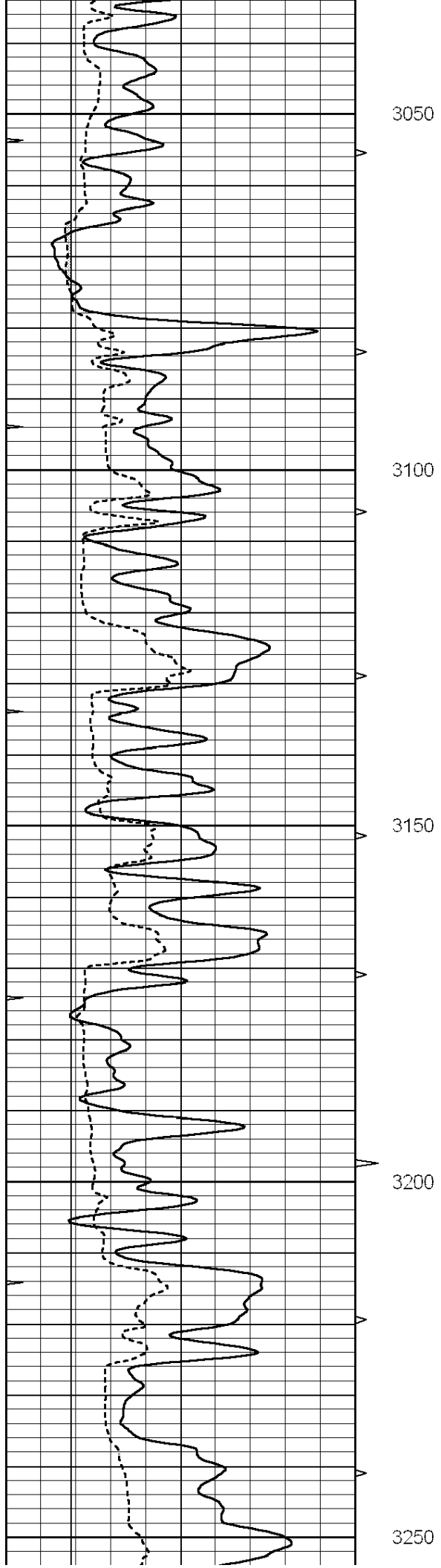
|   |                  |     |          |    |                |    |
|---|------------------|-----|----------|----|----------------|----|
| 0 | GAMMA RAY (GAPI) | 150 | ABHV     | 0  | MEL1.5 (Ohm-m) | 40 |
| 6 | CALIPER (in)     | 16  | 10 (ft3) | 0  | MEL 20 (Ohm-m) | 40 |
| 0 | MINMK            | 20  | TBHV     |    |                |    |
|   |                  |     | 0 (ft3)  | 10 |                |    |

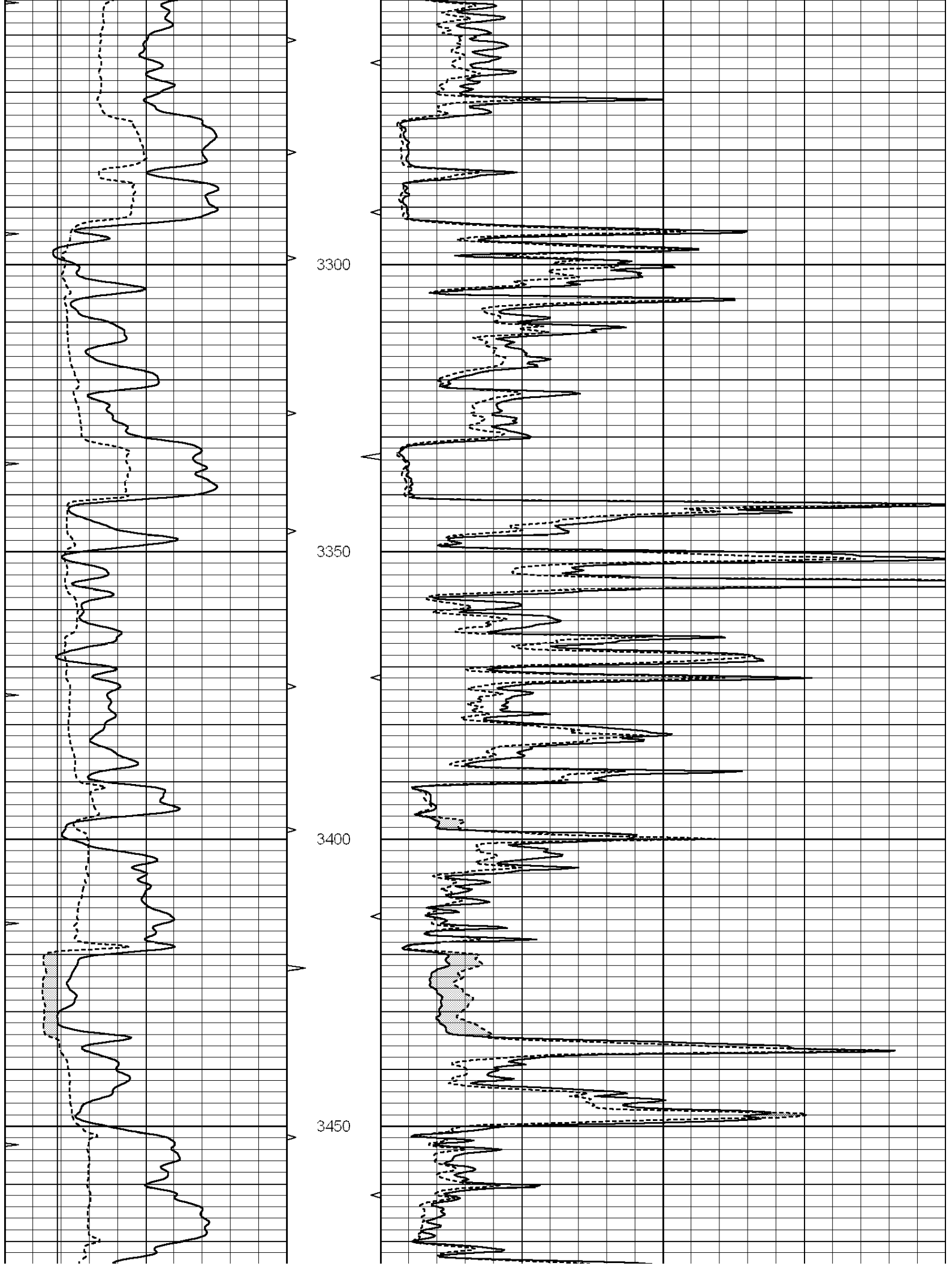


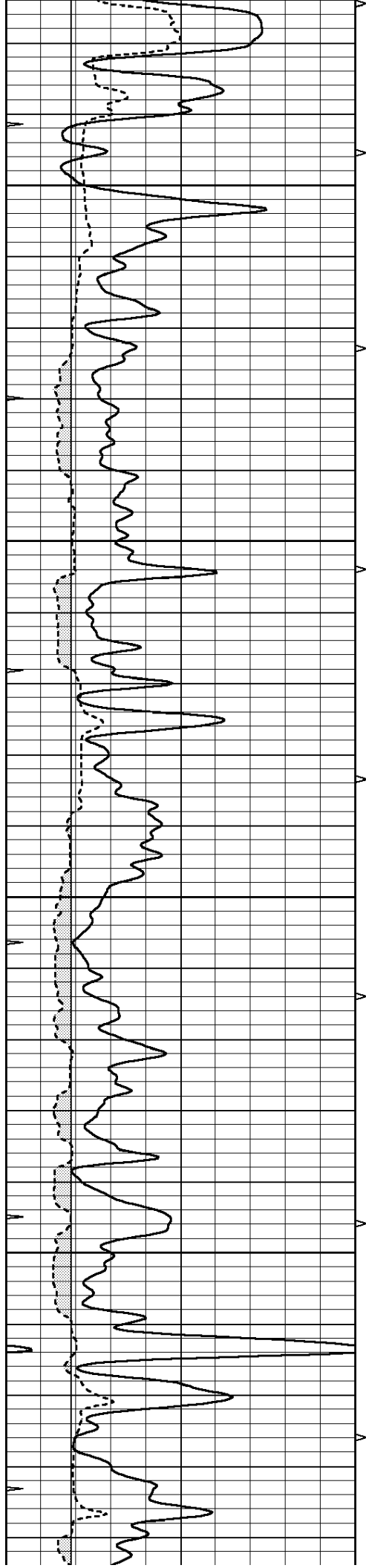










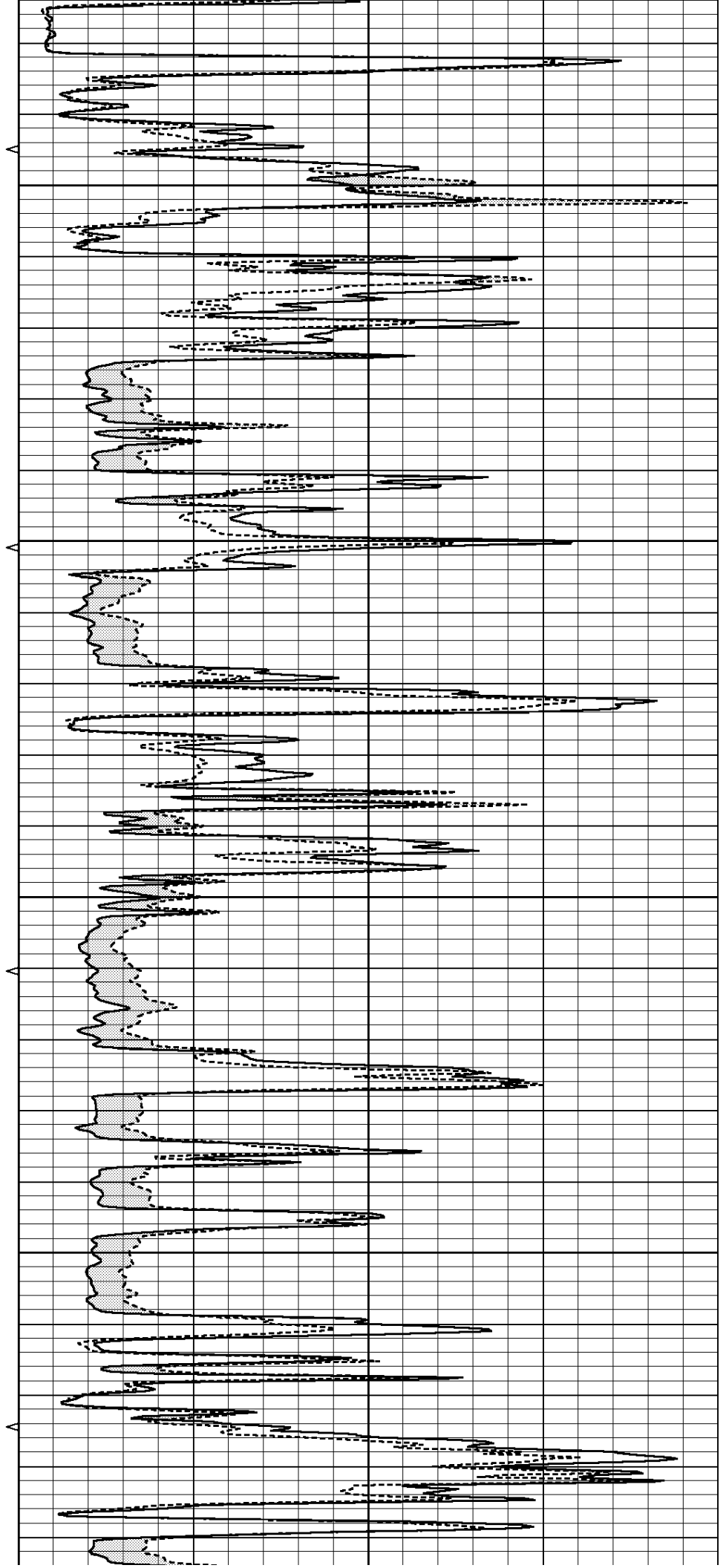


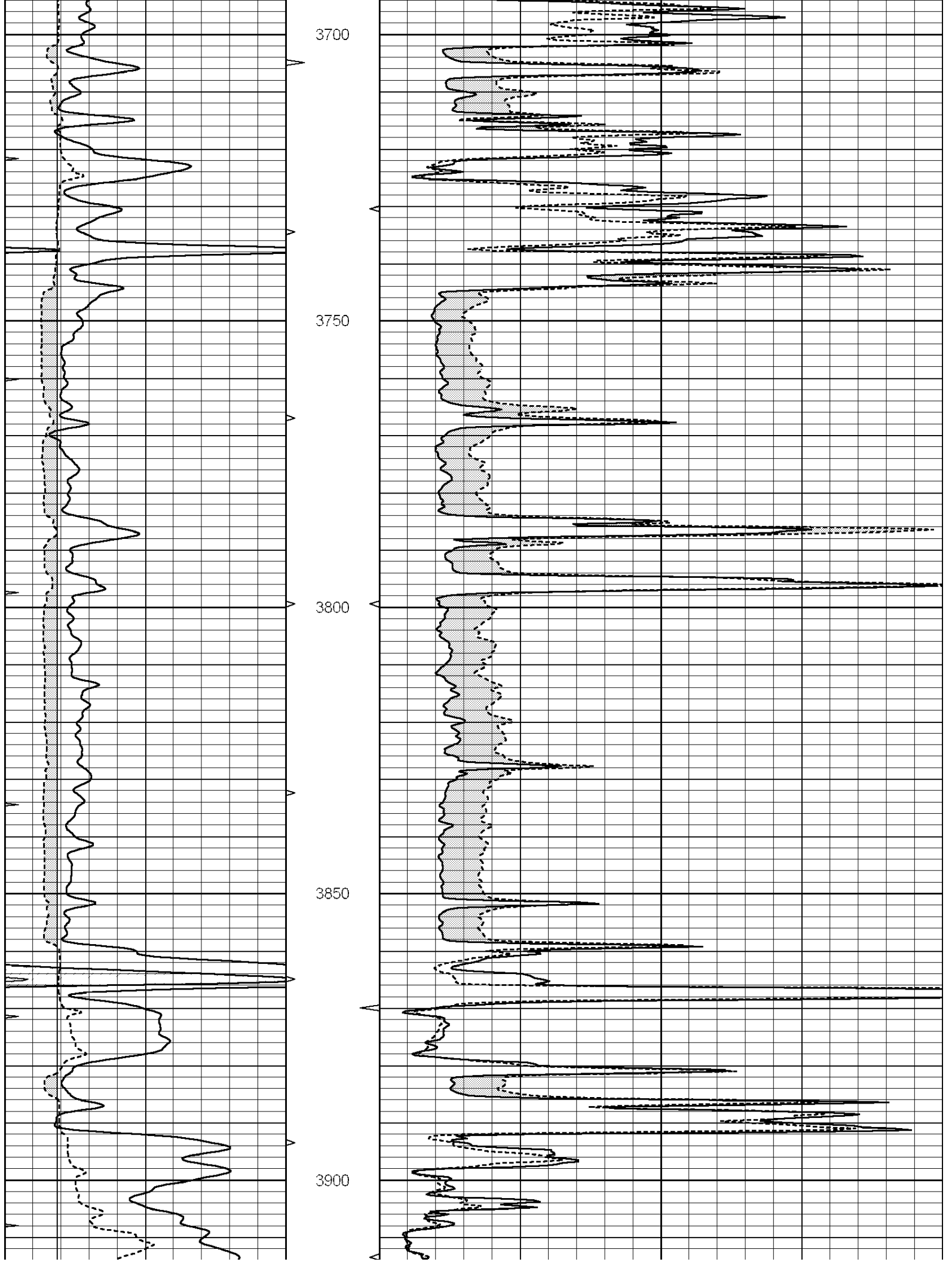
3500

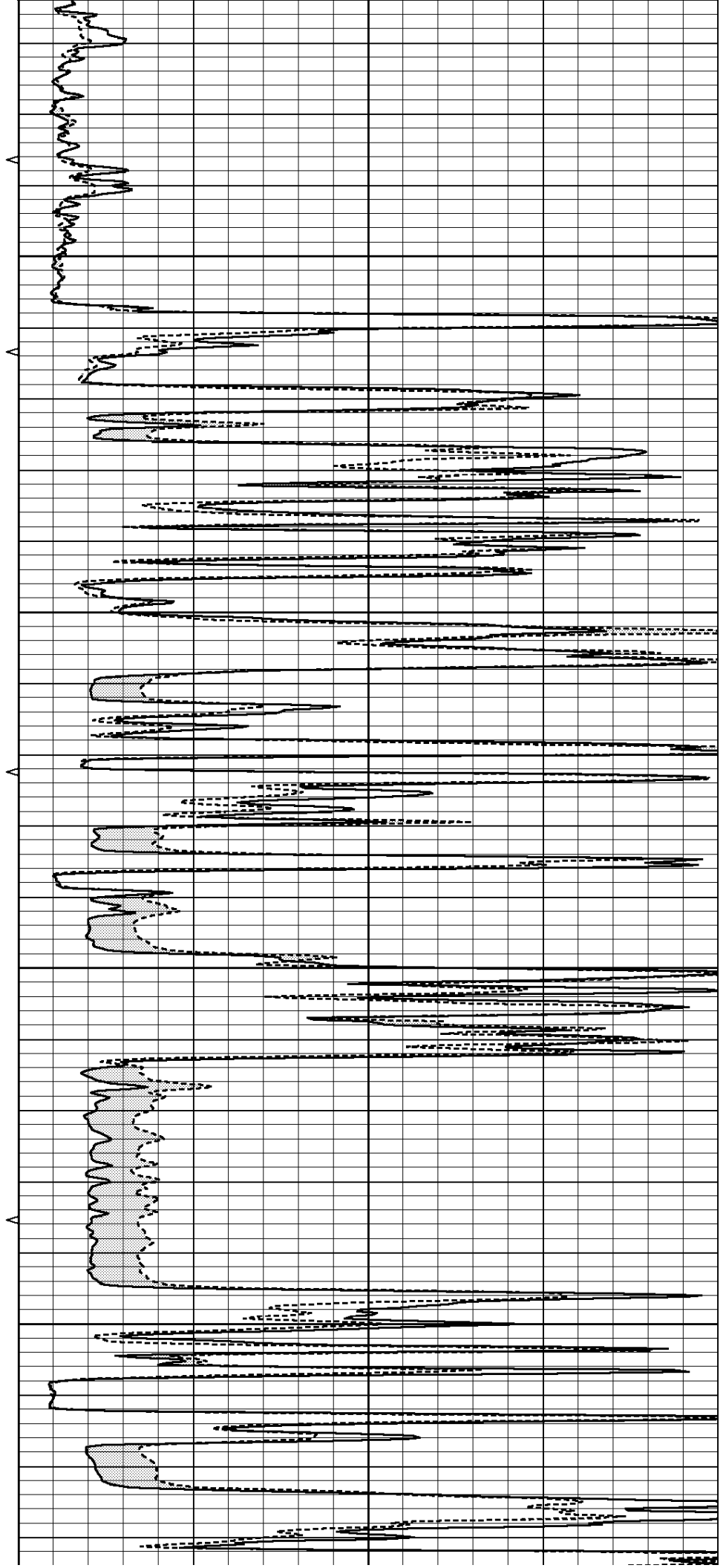
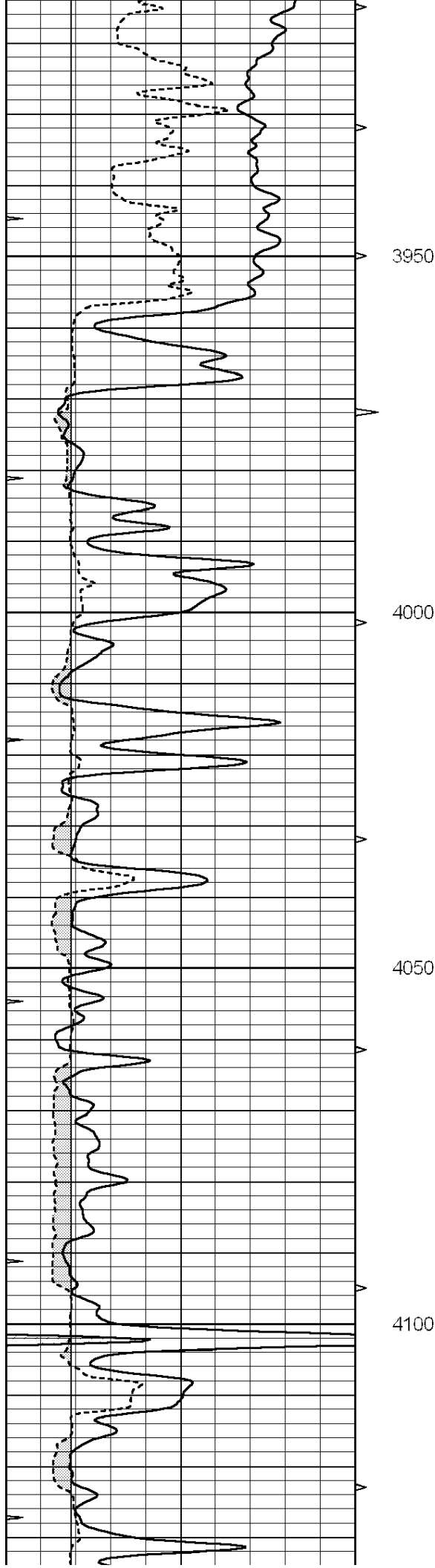
3550

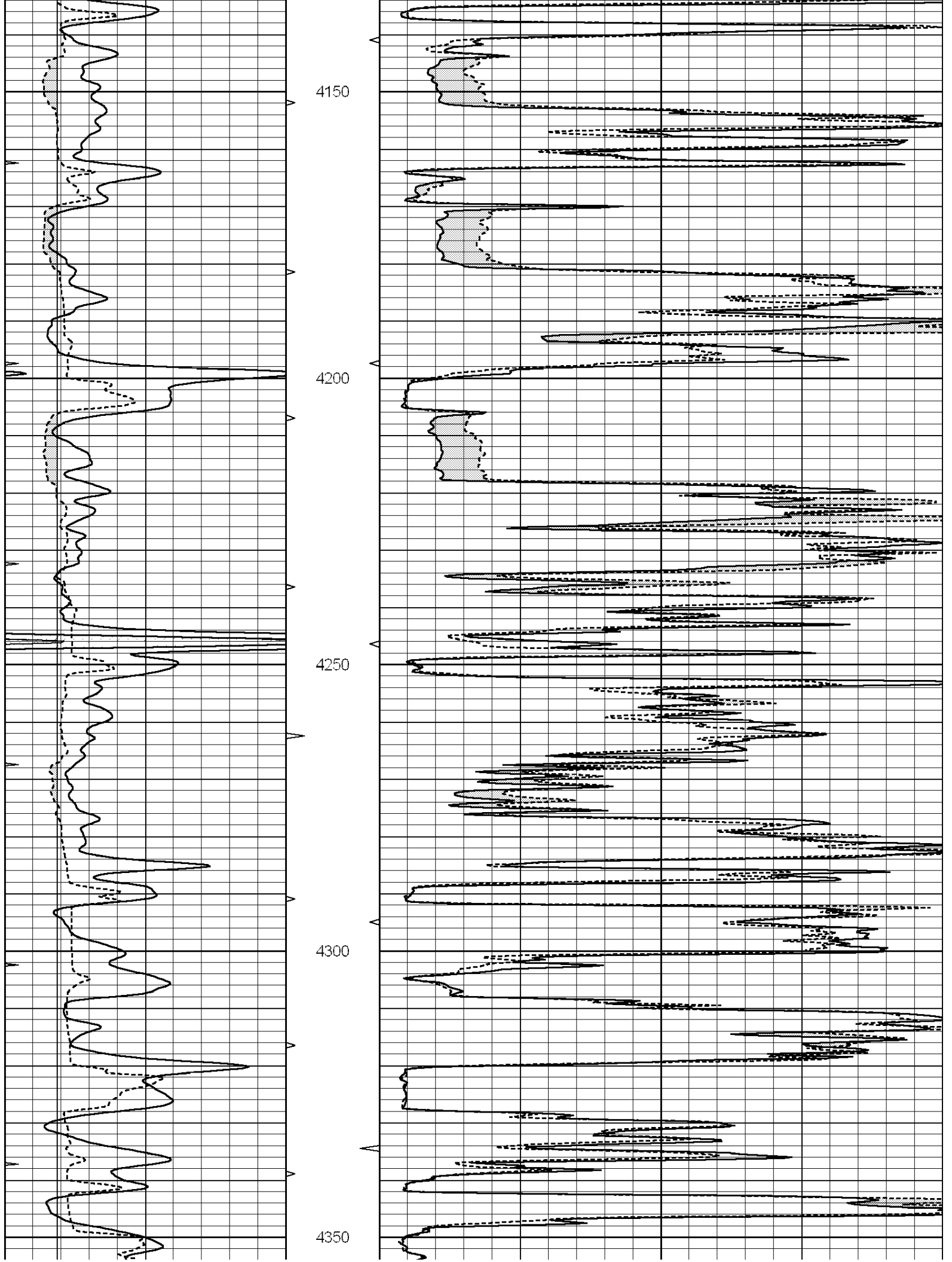
3600

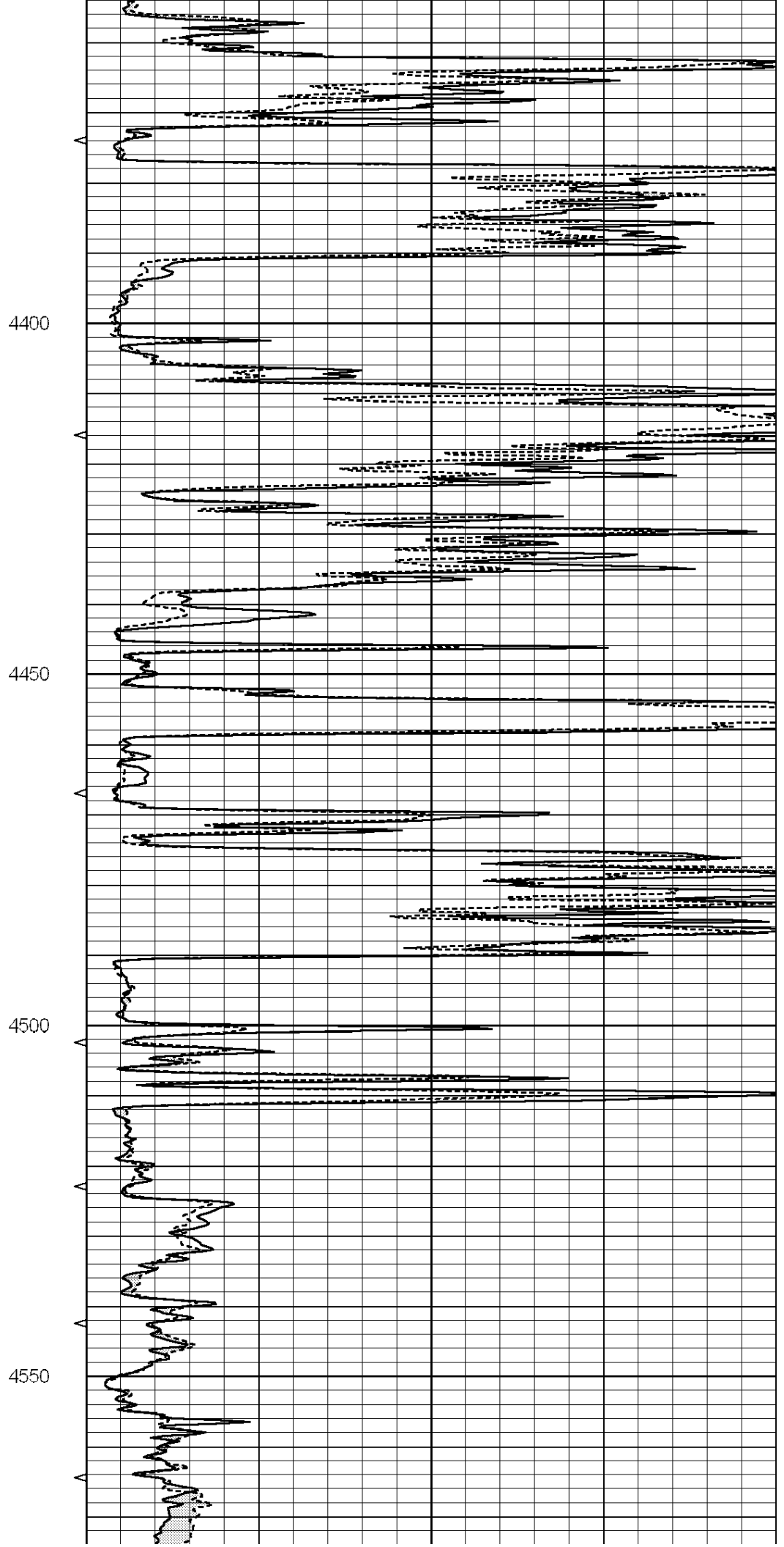
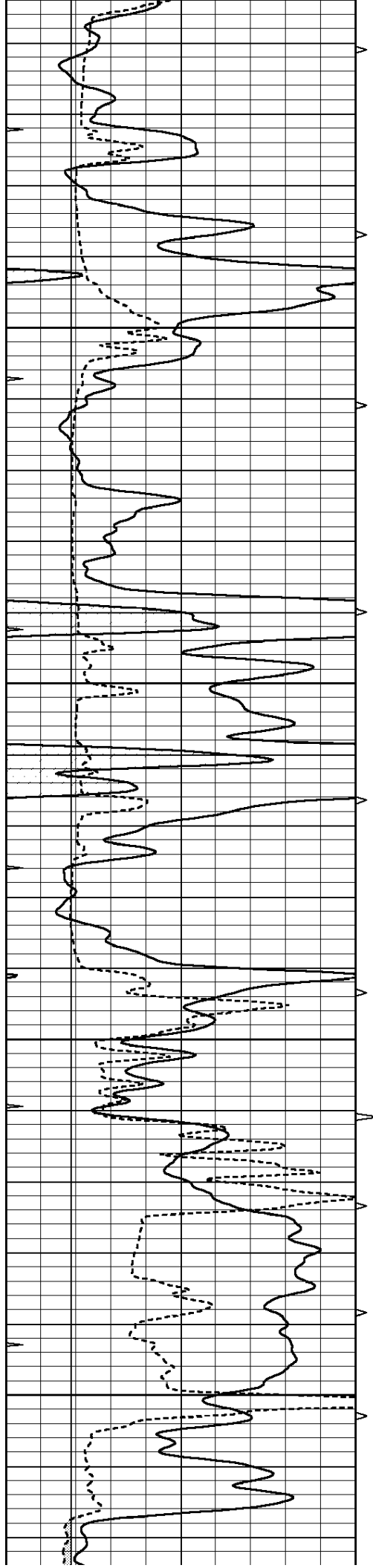
3650

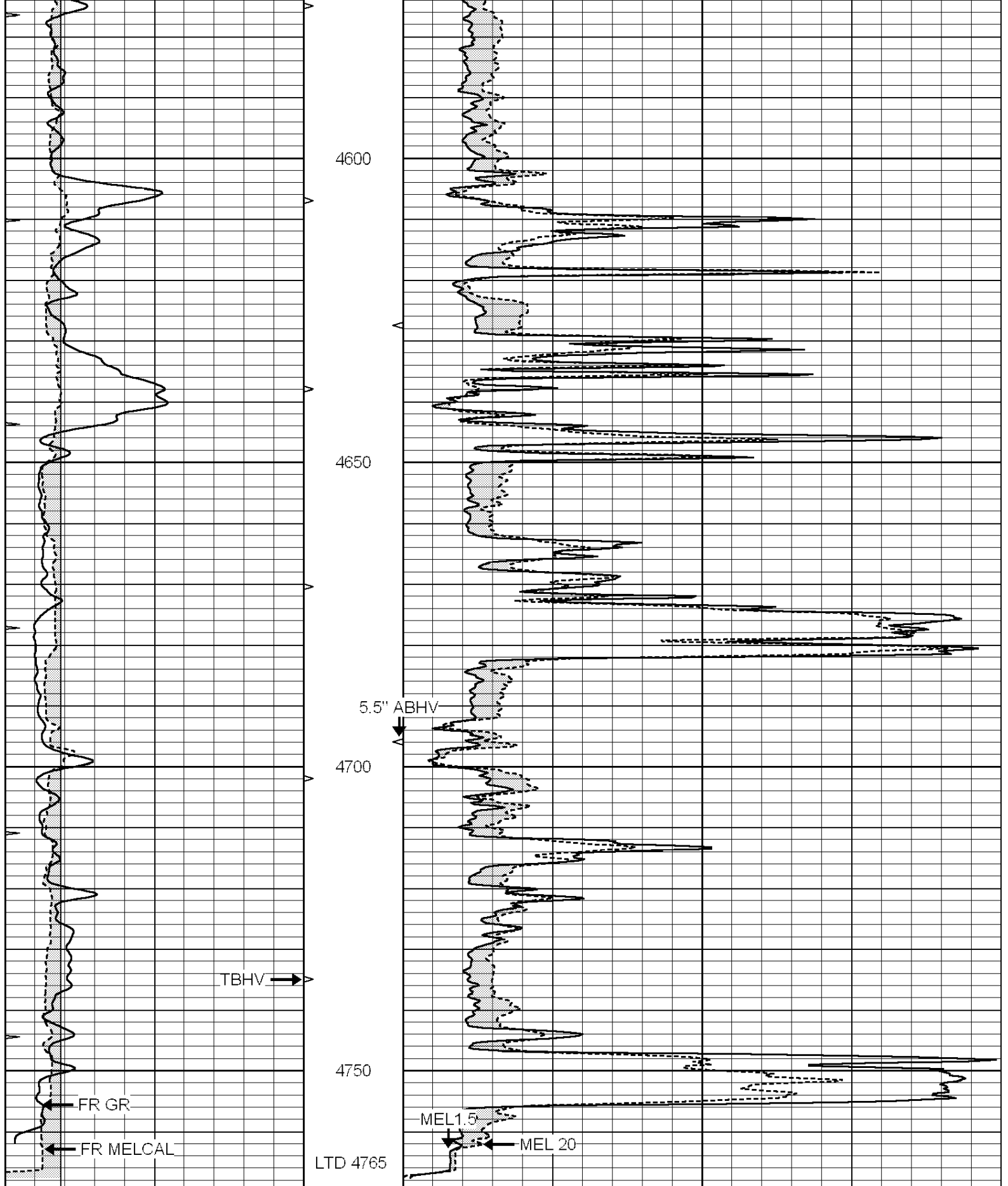










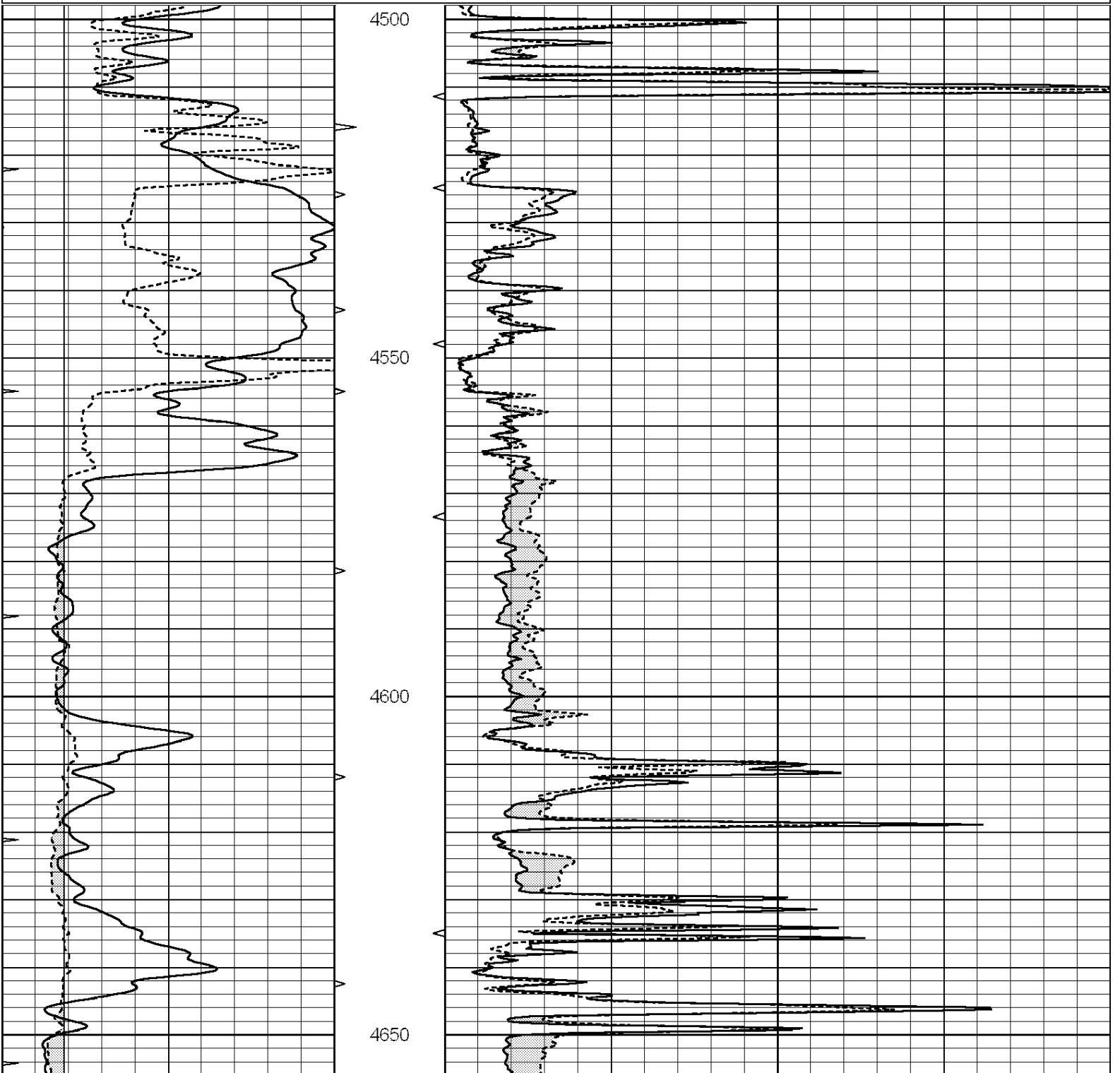


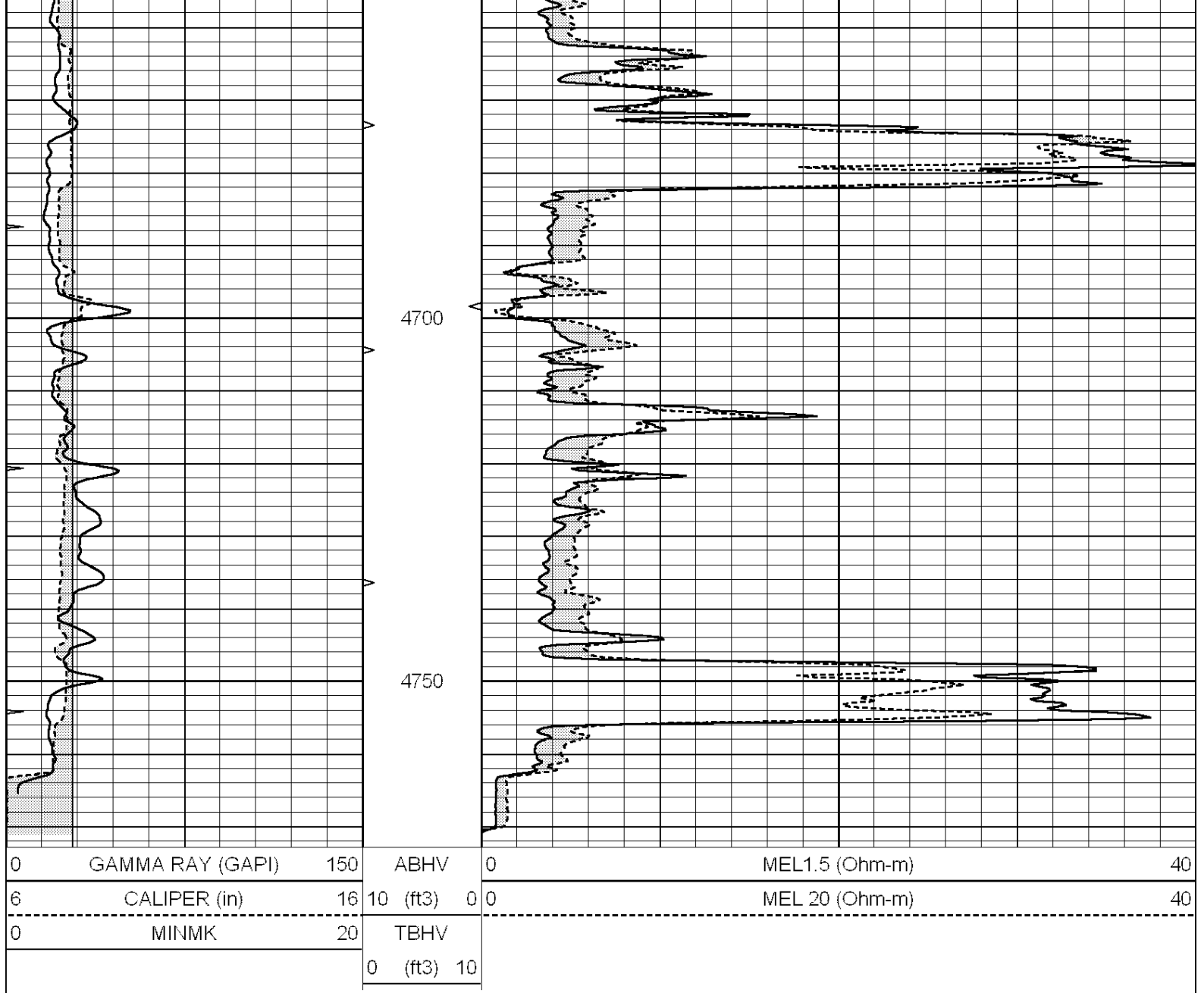
|   |                  |     |          |    |                |    |
|---|------------------|-----|----------|----|----------------|----|
| 0 | GAMMA RAY (GAPI) | 150 | ABHV     | 0  | MEL1.5 (Ohm-m) | 40 |
| 6 | CALIPER (in)     | 16  | 10 (ft3) | 0  | MEL 20 (Ohm-m) | 40 |
| 0 | MINMK            | 20  | TBHV     |    |                |    |
|   |                  |     | 0 (ft3)  | 10 |                |    |

# REPEAT SECTION

Database File: 25891pe.db  
 Dataset Pathname: pass6.1  
 Presentation Format: micro  
 Dataset Creation: Tue Oct 07 00:22:10 2014 by Calc SOC 120430  
 Charted by: Depth in Feet scaled 1:240

|   |                  |     |            |     |                |    |
|---|------------------|-----|------------|-----|----------------|----|
| 0 | GAMMA RAY (GAPI) | 150 | ABHV       | 0   | MEL1.5 (Ohm-m) | 40 |
| 6 | CALIPER (in)     | 16  | 10 (ft3)   | 0 0 | MEL 20 (Ohm-m) | 40 |
| 0 | MINMK            | 20  | TBHV       |     |                |    |
|   |                  |     | 0 (ft3) 10 |     |                |    |





### Calibration Report

Database File: 25891pe.db  
 Dataset Pathname: pass7.4  
 Dataset Creation: Tue Oct 07 01:41:21 2014

### MICRO Calibration Report

Serial Number: 070910  
 Tool Model: ProbeN  
 Performed: Wed Sep 24 01:14:56 2014

Caliper Calibration: Gain=4.150      Offset=1.460

|            |         |          |
|------------|---------|----------|
| References | Low Cal | High Cal |
| Readings   | 7.900   | 15.000   |
|            | 1.552   | 3.263    |

1.5" Calibration: Gain=25.000      Offset=0.500

|            |         |          |
|------------|---------|----------|
| References | Low Cal | High Cal |
| Readings   | 0.000   | 20.000   |
|            | 0.000   | 1.216    |

2" Calibration: Gain=50.000      Offset=0.000

|            |         |          |
|------------|---------|----------|
|            | Low Cal | High Cal |
| References | 0.000   | 20.000   |
| Readings   | 0.002   | 1.053    |

Gamma Ray Calibration Report

|                     |                          |          |
|---------------------|--------------------------|----------|
| Serial Number:      | 070559                   |          |
| Tool Model:         | OPEN_GR                  |          |
| Performed:          | Tue Sep 16 23:07:37 2014 |          |
| Calibrator Value:   | 1.0                      | GAPI     |
| Background Reading: | 0.0                      | cps      |
| Calibrator Reading: | 1.0                      | cps      |
| Sensitivity:        | 0.2000                   | GAPI/cps |