



Pioneer Energy Services

## Dual Compensated Porosity Log

15-055-22,360-00-00

API No.

Company **American Warrior, Inc.**  
 Well **O'Brate-Finney #1-5**  
 Field **Unknown**  
 County **Finney** State **Kansas**

Location **742' FSL & 2310' FWL**

Sec: **5** Twp: **23S** Rge: **32W**

Other Services  
 DIL  
 MEL/BHCS

Permanent Datum **Ground Level** Elevation **2849**  
 Log Measured From **Kelly Bushing** 11 Ft. Above Perm. Datum  
 Drilling Measured From **Kelly Bushing**

Elevation  
 K.B. 2860  
 D.F. G.I.L. 2849

|                        |              |  |
|------------------------|--------------|--|
| Date                   | 12/8/2014    |  |
| Run Number             | One          |  |
| Type Log               | CNL / CDL    |  |
| Depth Driller          | 5000         |  |
| Depth Logger           | 4999         |  |
| Bottom Logged Interval | 4978         |  |
| Top Logged Interval    | 3750         |  |
| Type Fluid In Hole     | Chemical     |  |
| Salinity, PPM CL       | 2400         |  |
| Density                | 9.5          |  |
| Level                  | Full         |  |
| Max. Rec. Temp. F      | 126          |  |
| Operating Rig Time     | 5 1/2 Hours  |  |
| Equipment -- Location  | 15 Hays      |  |
| Recorded By            | D.Kerr       |  |
| Witnessed By           | Kevin Timson |  |

**Borehole Record**

| Run No | Bit   | From | To   | Size  | Wgt. |
|--------|-------|------|------|-------|------|
| 1      | 12.25 | 00   | 1725 | 8.625 | 24#  |
| 2      | 7.875 | 1725 | 5000 |       |      |

**Casing Record**

| From | To   |
|------|------|
| 00   | 1725 |

<<< Fold Here >>>

All interpretations are opinions based on inferences from electrical or other measurements and we cannot and do not guarantee the accuracy or correctness of any interpretation, and we shall not, except in the case of gross or willful negligence on our part, be liable or responsible for any loss, costs, damages, or expenses incurred or sustained by anyone resulting from any interpretation made by any of our officers, agents or employees. These interpretations are also subject to our general terms and conditions set out in our current Price Schedule.

**Comments**

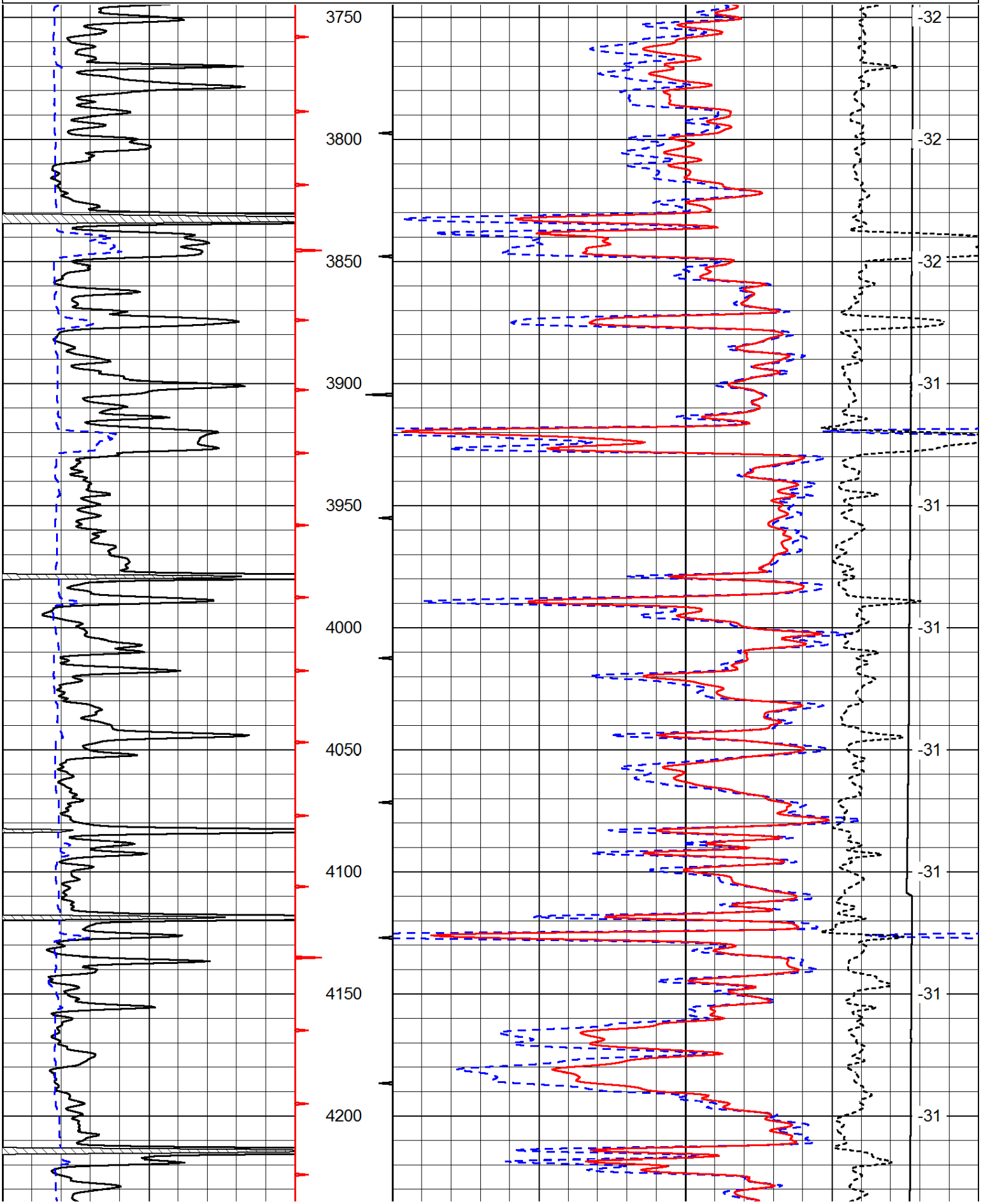
Thank you for using Pioneer Energy Services  
[www.pioneeres.com](http://www.pioneeres.com)  
 785 625 3858

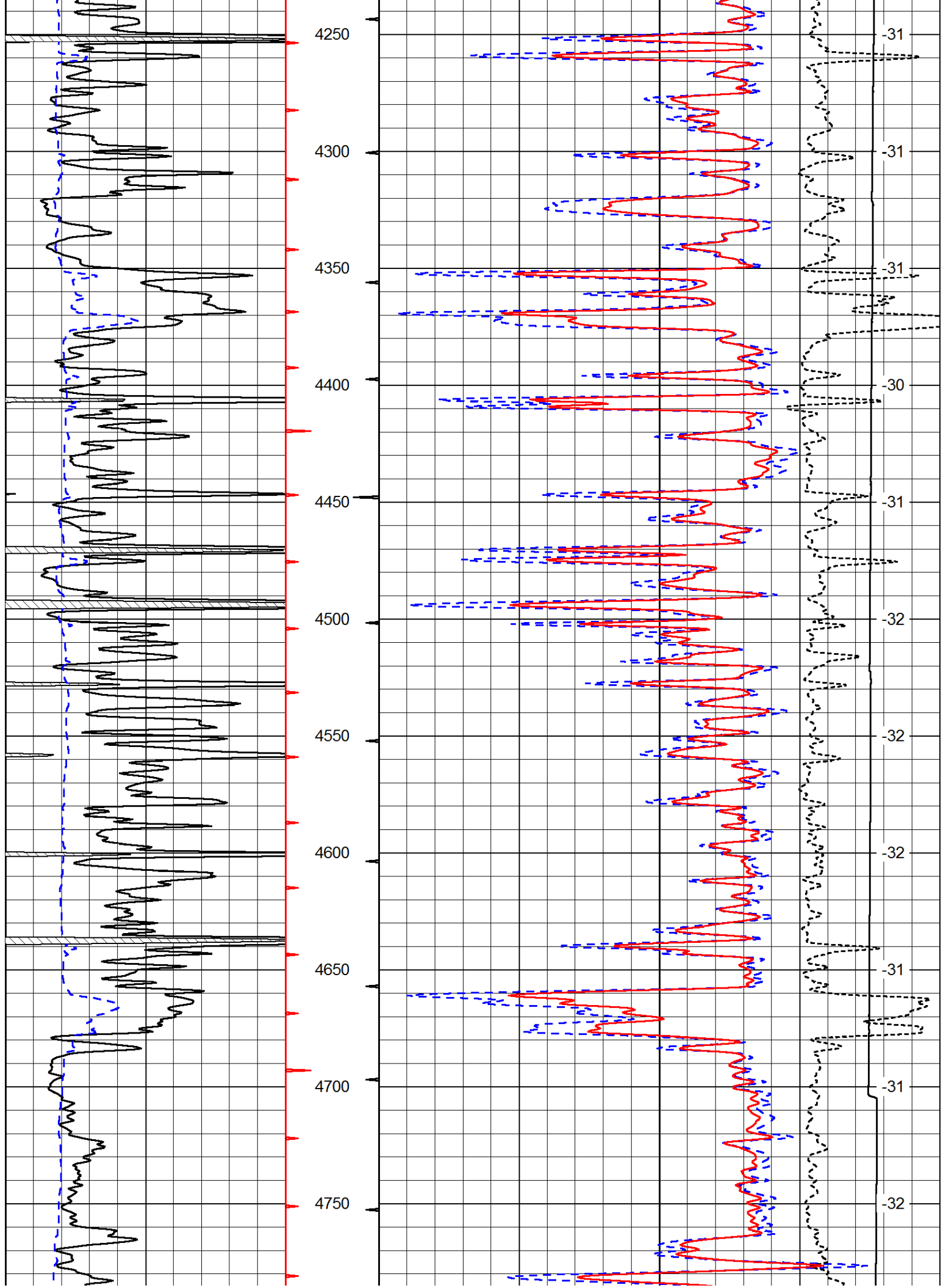
Garden City KS, 5 North to Six Mile RD,  
 1 East, 3/4 North, East Into

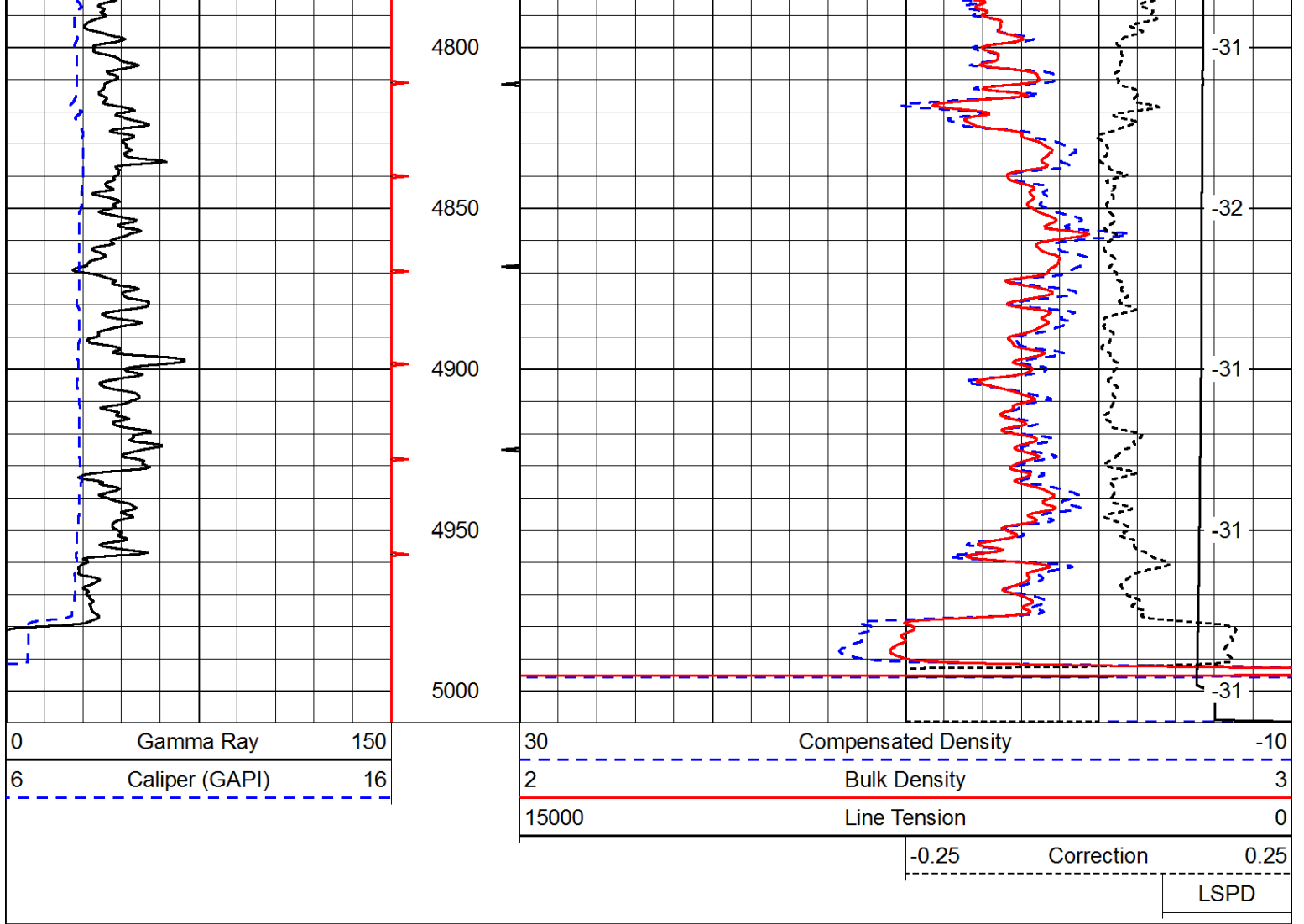
Database File: c:\warrior\data\amwar\_o'brate-finney #1-5\amwarrior\_obratefinney\_1\_5hd.db  
 Dataset Pathname: DIL/awstk  
 Presentation Format: cdl  
 Dataset Creation: Mon Dec 08 20:13:15 2014  
 Charted by: Depth in Feet scaled 1:600

|   |                |     |
|---|----------------|-----|
| 0 | Gamma Ray      | 150 |
| 6 | Caliper (GAPI) | 16  |

|       |                     |            |      |
|-------|---------------------|------------|------|
| 30    | Compensated Density | -10        |      |
| 2     | Bulk Density        | 3          |      |
| 15000 | Line Tension        | 0          |      |
|       | -0.25               | Correction | 0.25 |
|       |                     |            | LSPD |







Database File: c:\warrior\data\amwar\_o\brate-finney #1-5\amwarrior\_obratefinney\_1\_5hd.db  
 Dataset Pathname: DIL/awstk  
 Presentation Format: cndlspec  
 Dataset Creation: Mon Dec 08 20:13:15 2014  
 Charted by: Depth in Feet scaled 1:240

