



Pioneer Energy Services

# Microresistivity Log

15-055-22,360-00-00

API No.

Company **American Warrior, Inc.**

Well **O'Brate-Finney #1-5**

Field **Unknown**

County **Finney** State **Kansas**

Location **742' FSL & 2310' FWL**

Sec: **5** Twp: **23S** Rge: **32W**

Permanent Datum **Ground Level** Elevation **2849**

Log Measured From **Kelly Bushing** 11 Ft. Above Perm. Datum

Drilling Measured From **Kelly Bushing** K.B. 2860  
D.F. 2849  
G.L. 2849

Other Services  
CNL/CDL  
DIL/BHCS

Date **12/8/2014**

Run Number **Two**

Depth Driller **5000**

Depth Logger **4999**

Bottom Logged Interval **4998**

Top Log Interval **3750**

Casing Driller **8.625 @ 1725**

Casing Logger **1723**

Bit Size **7.875**

Type Fluid in Hole **Chemical**

Salinity, ppm CL **2400**

Density / Viscosity **9.5 48**

pH / Fluid Loss **9.5 9.6**

Source of Sample **Flowline**

Rm @ Meas. Temp **0.55 @ 68**

Rmf @ Meas. Temp **0.41 @ 68**

Rmc @ Meas. Temp **0.74 @ 68**

Source of Rmf / Rmc **Charts**

Rm @ BHT **0.30 @ 126**

Operating Rig Time **5 1/2 Hours**

Max Rec. Temp. F **126**

Equipment Number **15**

Location **Hays**

Recorded By **D.Kerr**

Witnessed By **Kevin Timson**

<<< Fold Here >>>

All interpretations are opinions based on inferences from electrical or other measurements and we cannot and do not guarantee the accuracy or correctness of any interpretation, and we shall not, except in the case of gross or willful negligence on our part, be liable or responsible for any loss, costs, damages, or expenses incurred or sustained by anyone resulting from any interpretation made by any of our officers, agents or employees. These interpretations are also subject to our general terms and conditions set out in our current Price Schedule.

### Comments

Thank you for using Pioneer Energy Services  
www.pioneeres.com  
785 625 3858

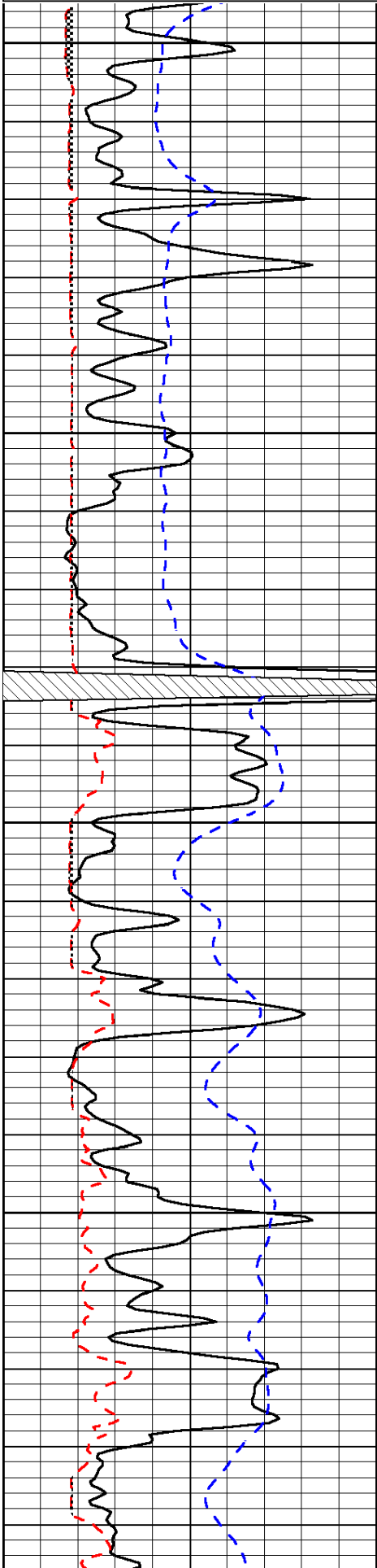
Garden City KS, 5 North to Six Mile RD,  
1 East, 3/4 North, East Into

Database File: c:\warrior\data\amwar\_o'brate-finney #1-5\amwarrior\_obratefinney\_1\_5hd.db  
Dataset Pathname: DIL/awstk  
Presentation Format: micro  
Dataset Creation: Mon Dec 08 20:13:15 2014  
Charted by: Depth in Feet scaled 1:240

0	Gamma Ray	150
6	MCAL (GAPI)	16
-200	SP (mV)	0

0	Micro Inverse 1 X 1	40
0	Micro Normal 2"	40
15000	Line Weight	0

LSPD

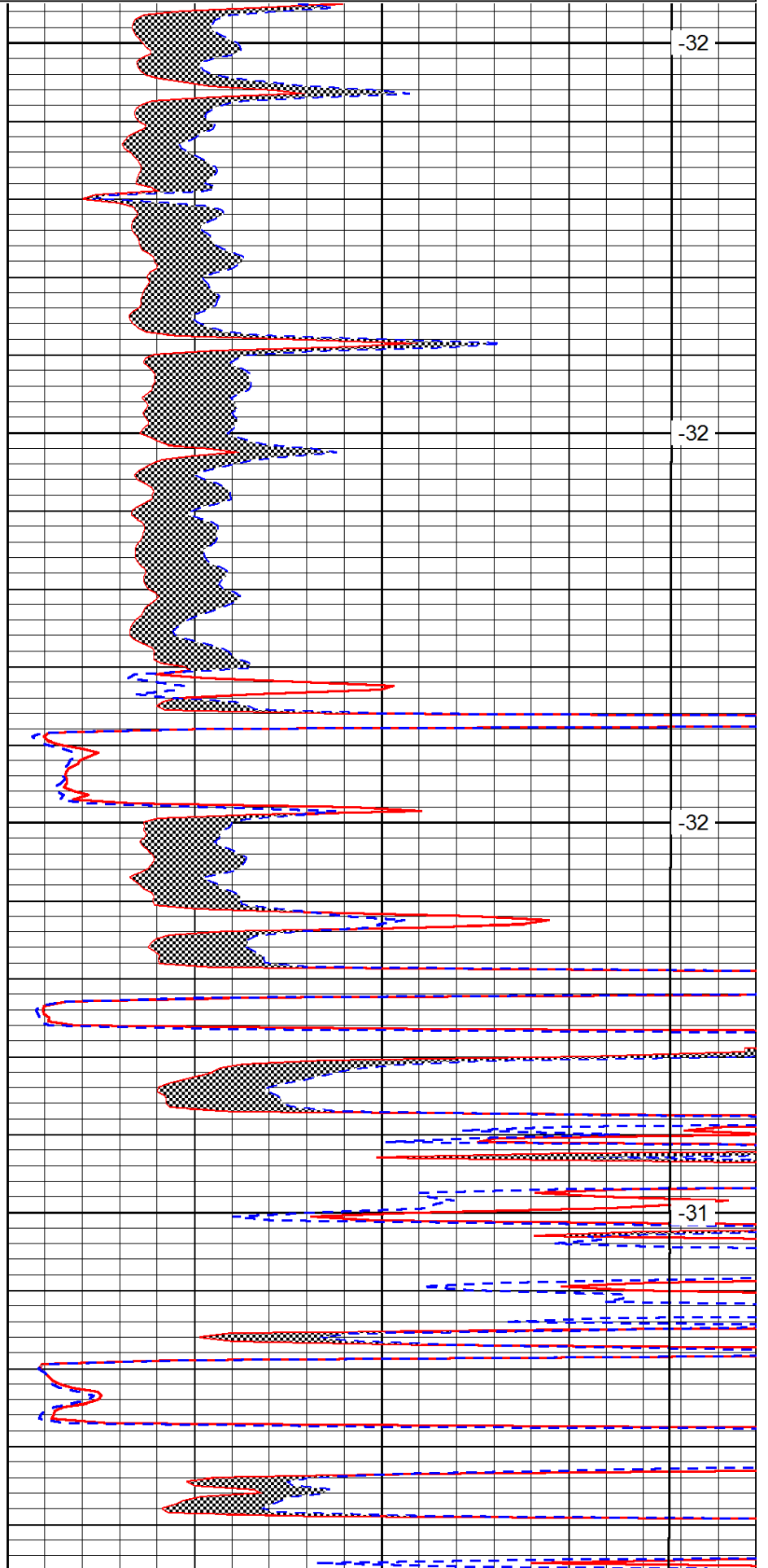


3750

3800

3850

3900

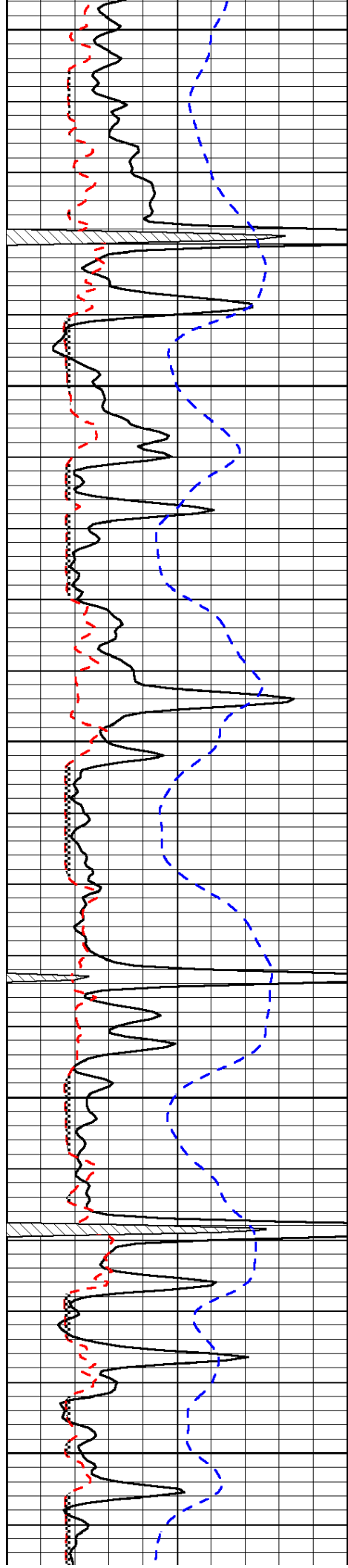


-32

-32

-32

-31



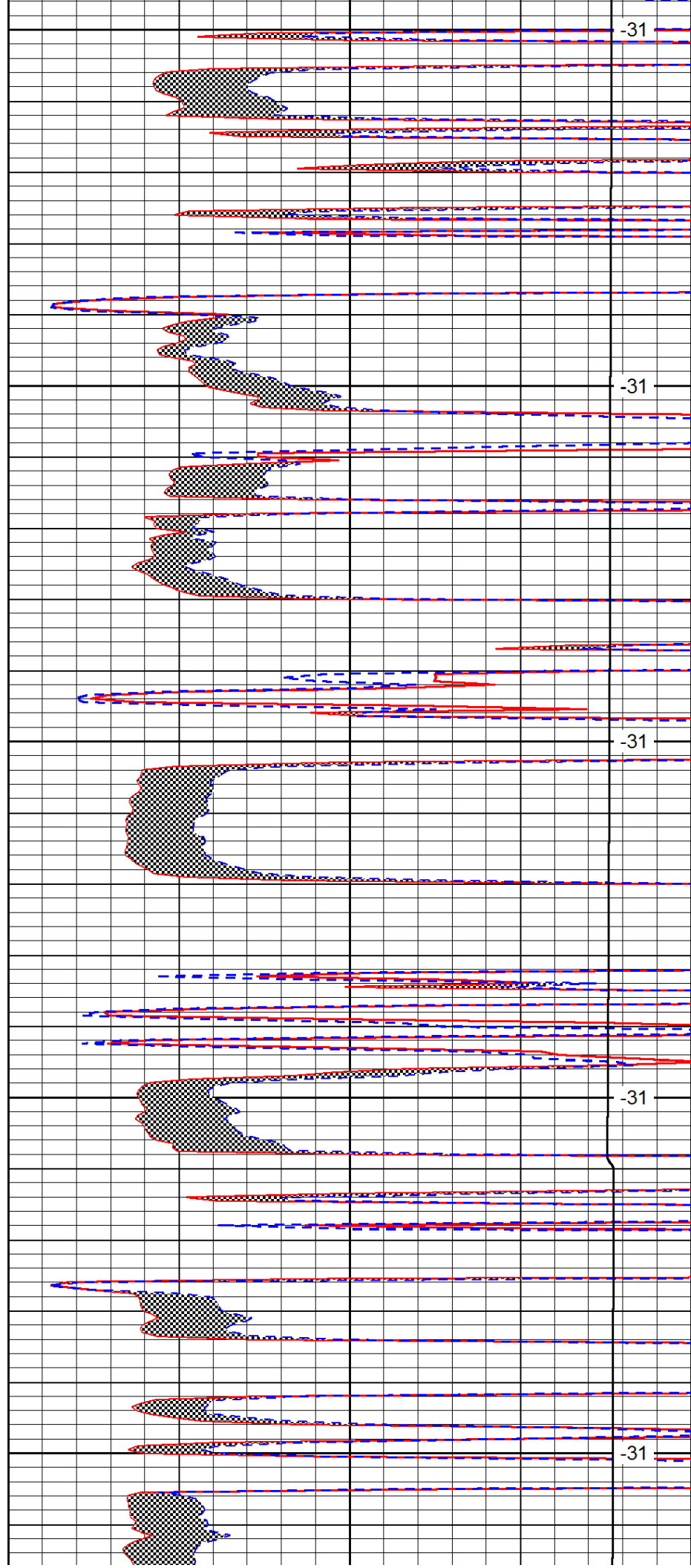
3950

4000

4050

4100

4150



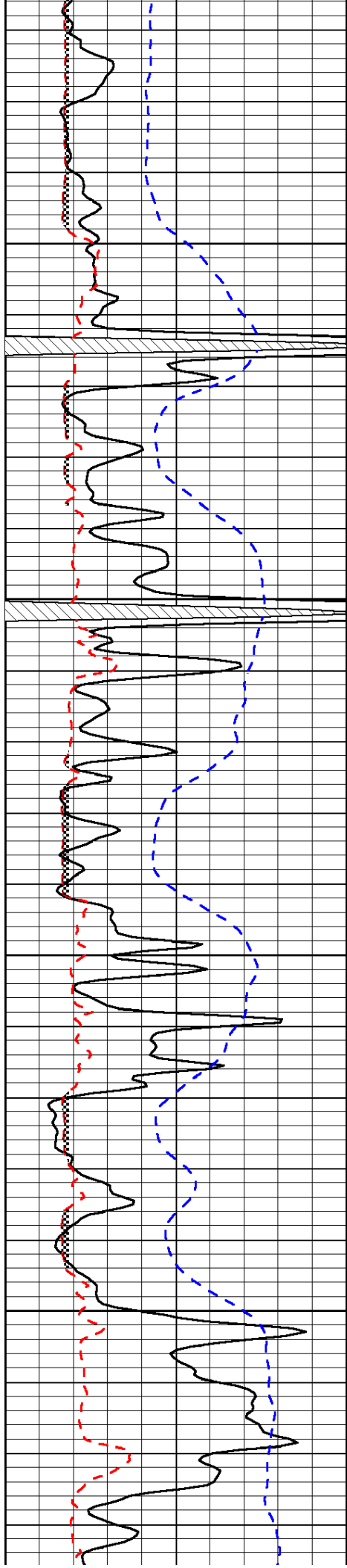
-31

-31

-31

-31

-31

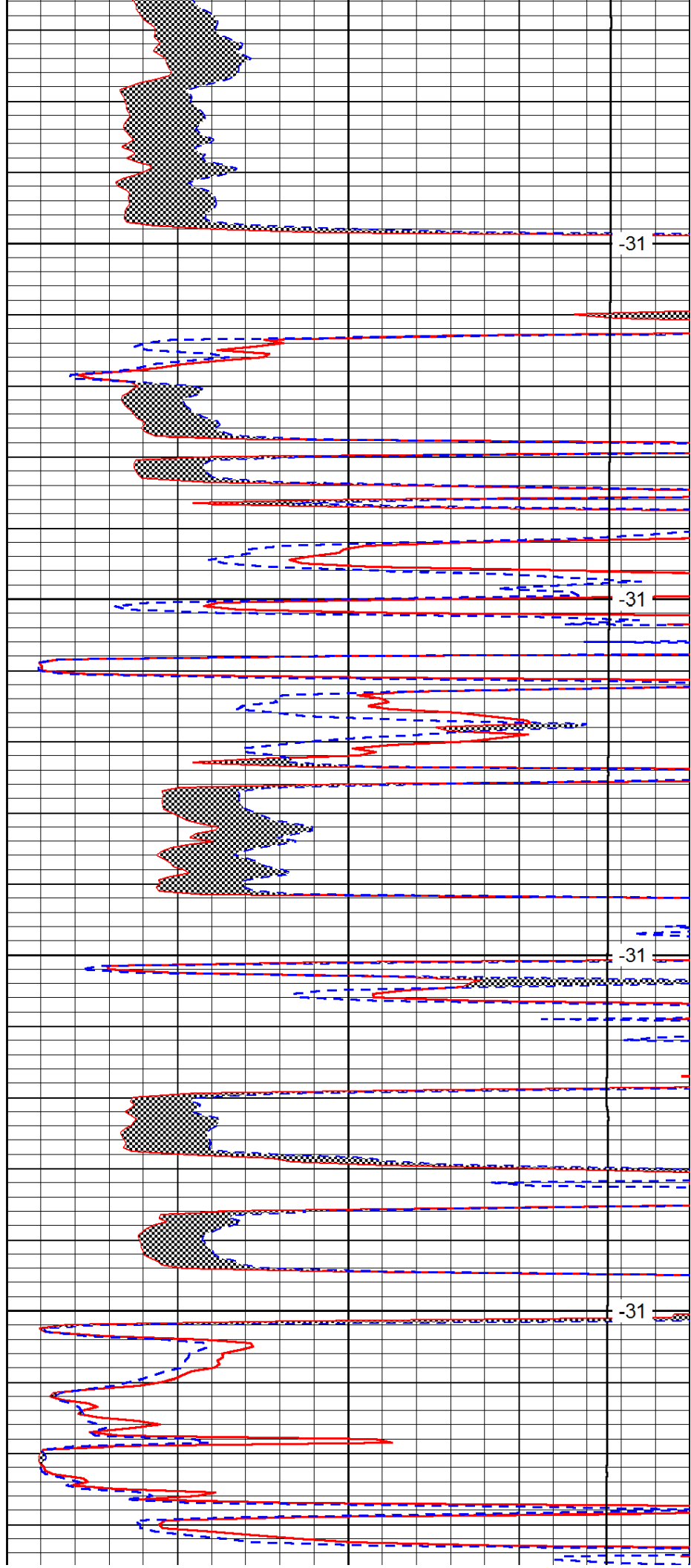


4200

4250

4300

4350

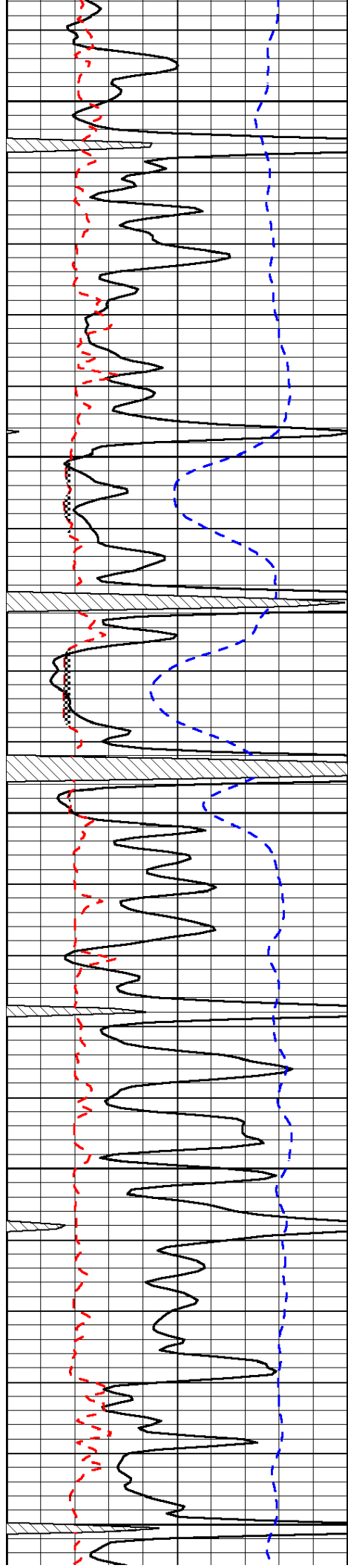


-31

-31

-31

-31



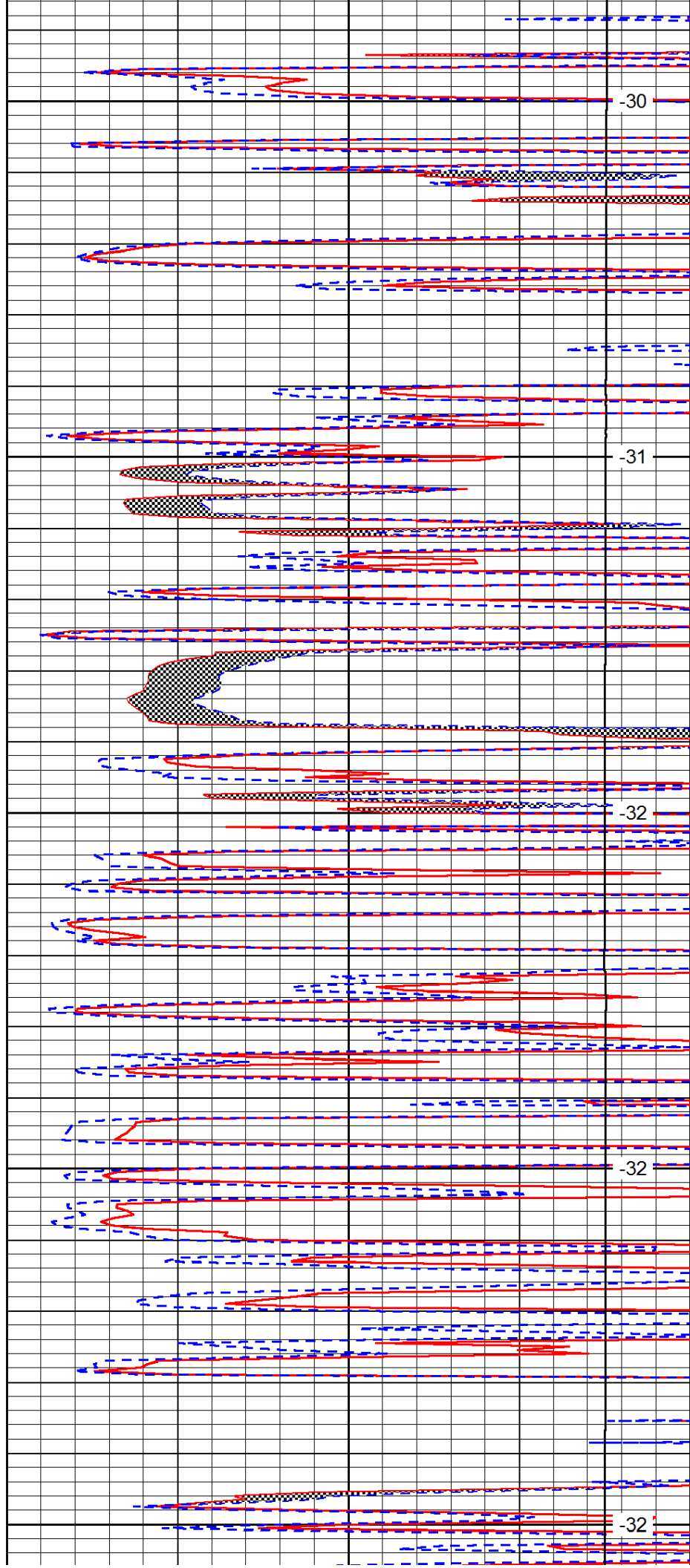
4400

4450

4500

4550

4600



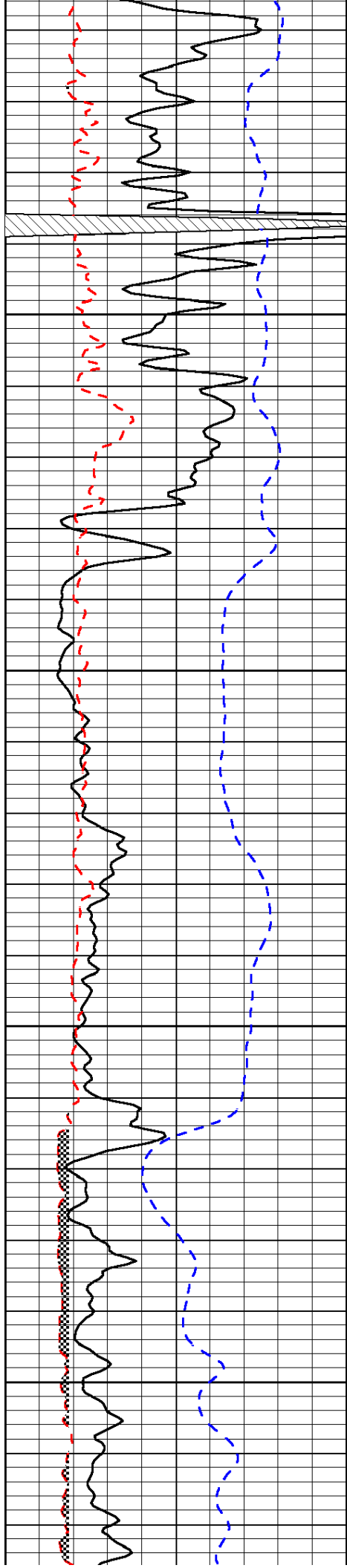
-30

-31

-32

-32

-32

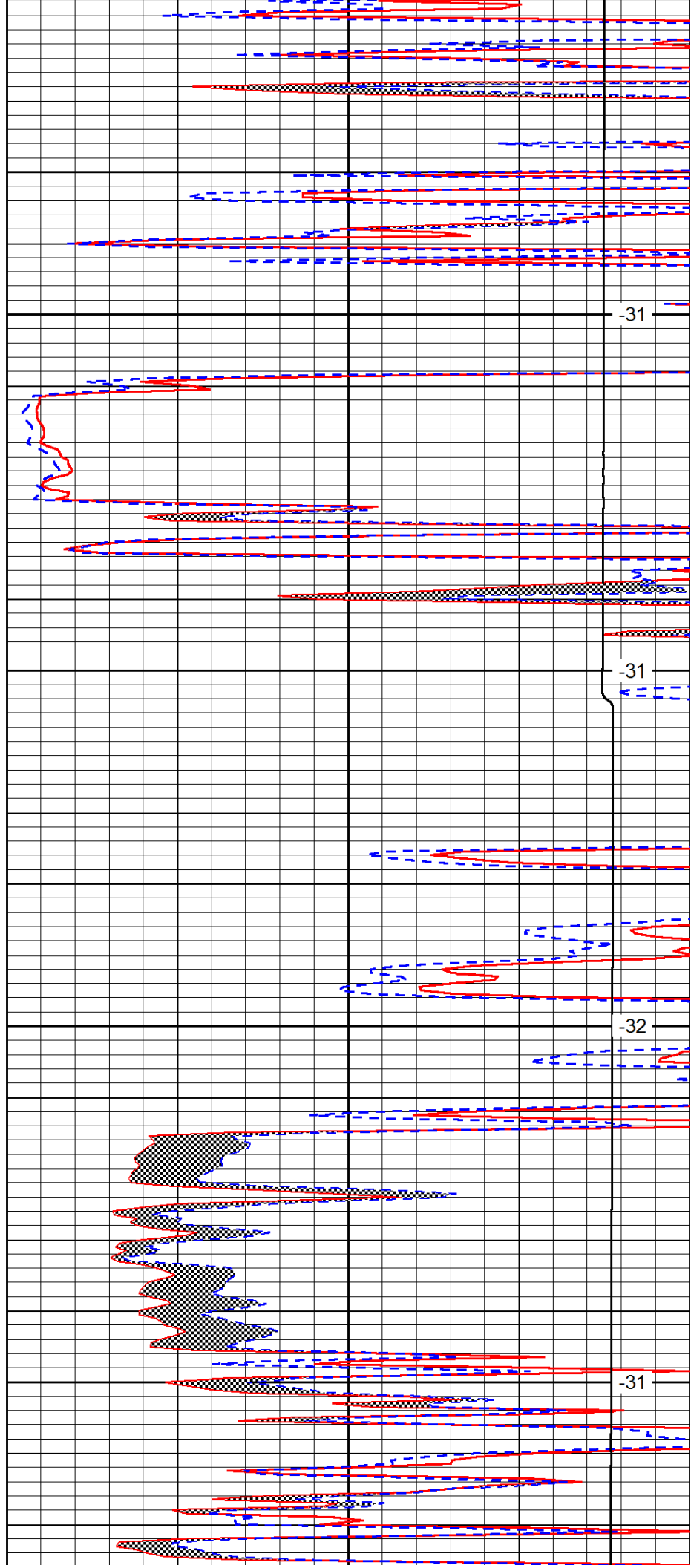


4650

4700

4750

4800

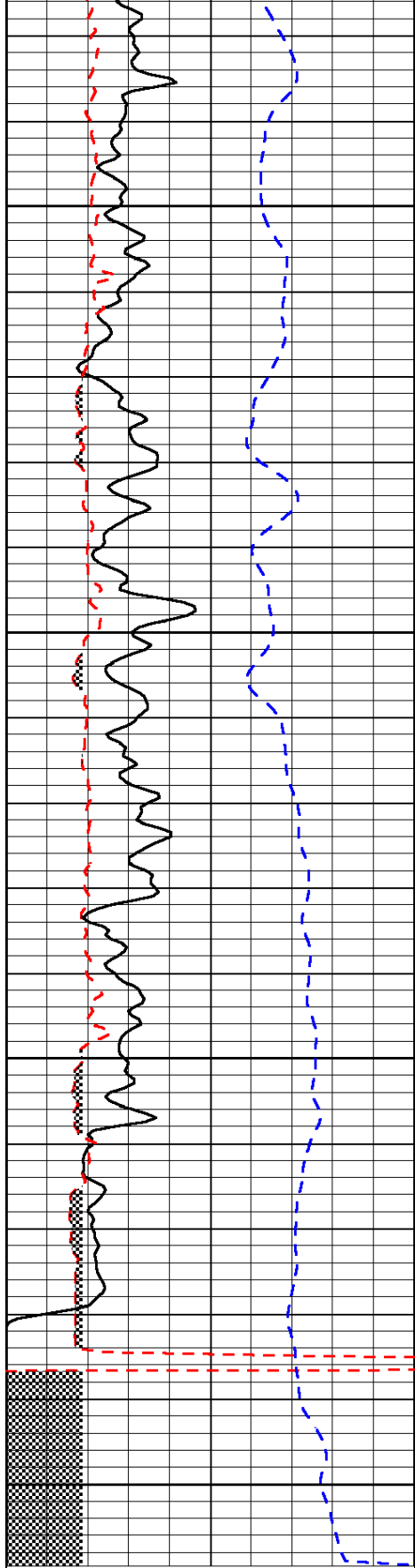


-31

-31

-32

-31



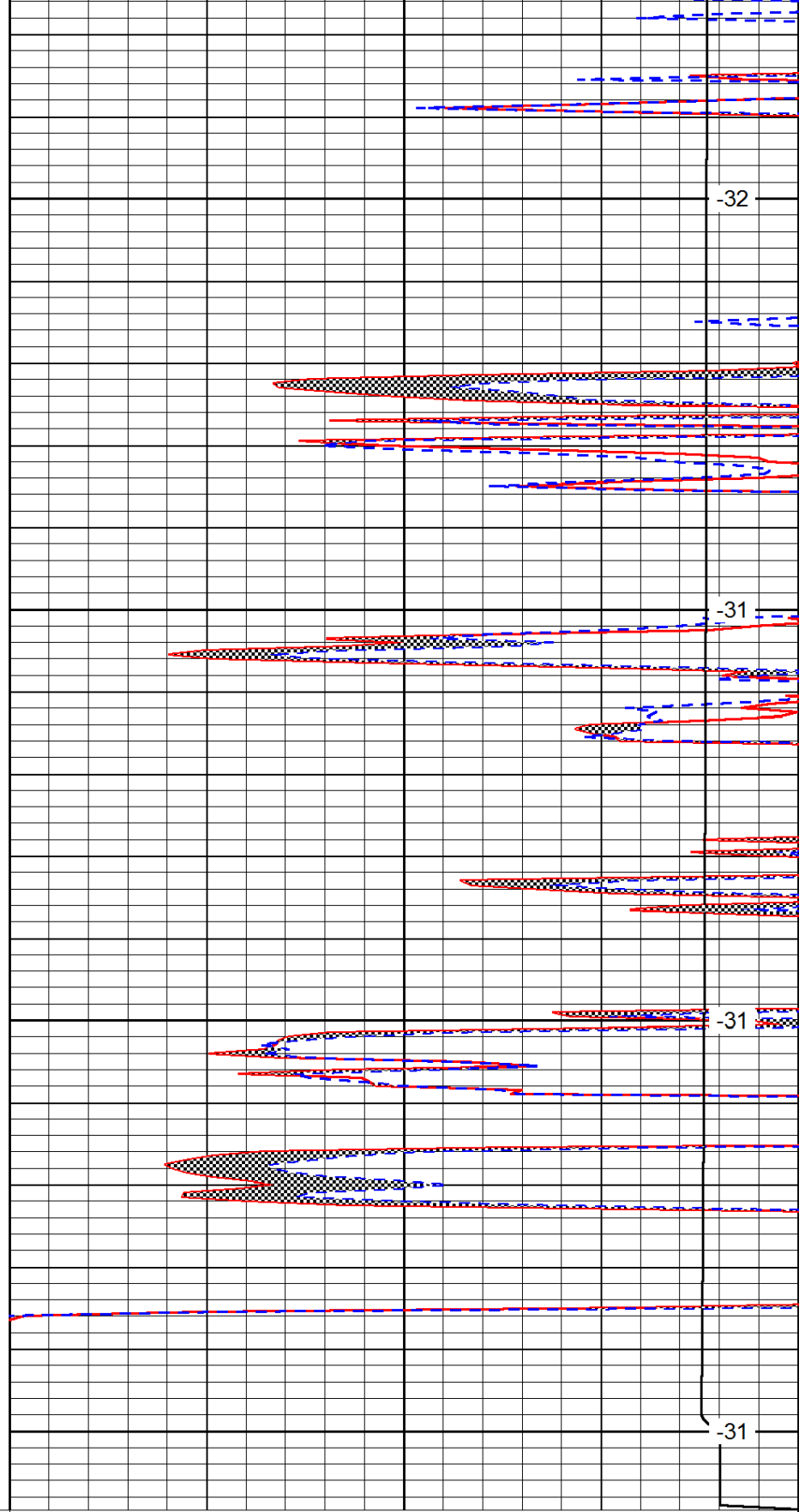
0	Gamma Ray	150
6	MCAL (GAPI)	16
-200	SP (mV)	0

4850

4900

4950

5000



-32

-31

-31

-31

0	Micro Inverse 1 X 1	40
0	Micro Normal 2"	40
15000	Line Weight	0

LSPD