



MIDWEST SURVEYS
 LOGGING - PERFORATING - CONSULTING SERVICES
 P.O. Box 68, Osawatomie, KS 66064
 913 / 755 - 2128

GAMMA RAY / NEUTRON / CCL

API # 15-011-24,471

File No. Company Running Foxes Petroleum, Inc.

Well Shaw No. 1-25C-Inj-3

Field Wildcat

County Bourbon State Kansas

Location 945' FNL & 685' FEL
 NE-SW-NE-NE

Sec. 25 Twp. 24S Rge. 25E
 Permanent Datum GL Elevation 870' est
 Log Measured From GL
 Drilling Measured From GL

Other Services Perforate
 Elevation K.B. NA
 D.F. NA
 G.L. 870' est

Date	11-26-2014	
Run Number	One	
Depth Driller	320.0	
Depth Logger	303.7	
Bottom Logged Interval	302.7	
Top Log Interval	20.0	
Fluid Level	Full	
Type Fluid	Water	
Density / Viscosity	NA	
Salinity - PPM Cl	NA	
Max Recorded Temp	NA	
Estimated Cement Top	0.0	
Equipment No.	107	Osawatomie
Recorded By	Steve Windisch	
Witnessed By	Jesse Smith	

BORE-HOLE RECORD		CASING RECORD					
Run No.	BIT	FROM	TO	SIZE	WGT.	FROM	TO
One	12.25"	0.0	20.0	8.625"	24.0 #	0.0	20.0
Two	6.75"	20.0	320.0	2.875"	6.5 #	0.0	304.0

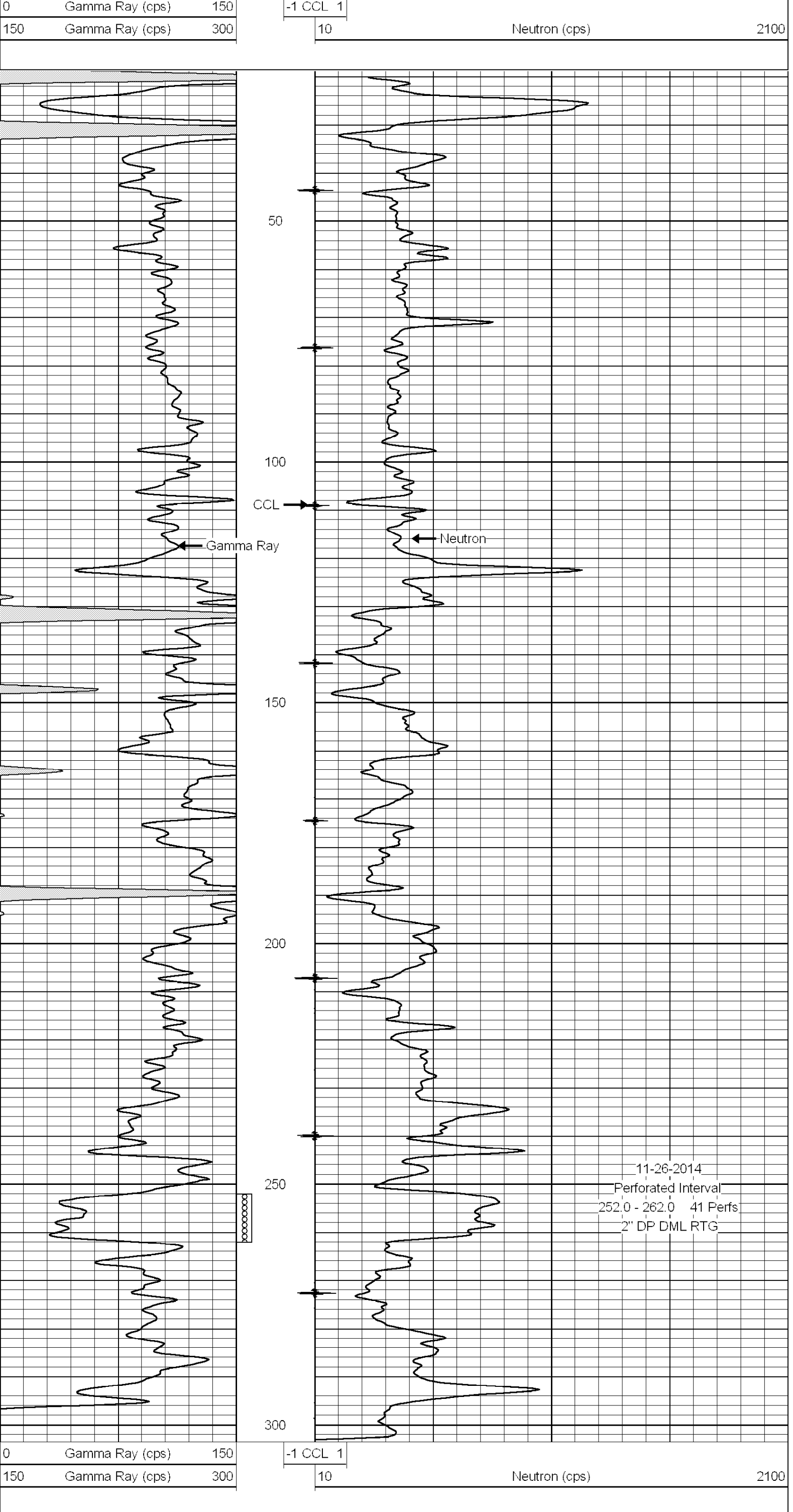
<<< Fold Here >>>

All interpretations are opinions based on inferences from electrical or other measurements and we cannot and do not guarantee the accuracy or correctness of any interpretation, and we shall not, except in the case of gross or willful negligence on our part, be liable or responsible for any loss, costs, damages, or expenses incurred or sustained by anyone resulting from any interpretation made by any of our officers, agents or employees. These interpretations are also subject to our general terms and conditions set out in our current Price Schedule.

Comments

Drilling Contractor :
 CST Oil & Gas

Database File: shaw1-25c-inj3.db
 Dataset Pathname: pass1
 Presentation Format: gr-n-ccl
 Dataset Creation: Wed Nov 26 12:30:53 2014 by Log SCH 111116
 Charted by: Depth in Feet scaled 1:240



11-26-2014
 Perforated Interval
 252.0 - 262.0 41 Perfs
 2" DP DML RTG